

Trilogy EVO Internal – Photos

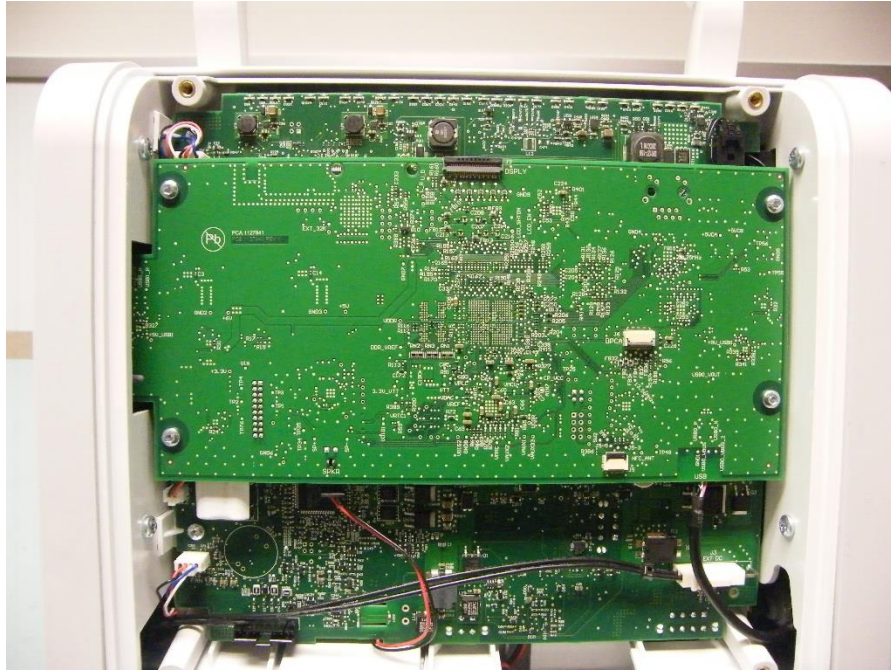


Figure 1: Front View of Trilogy EVO Device with front panel removed showing Display PCA and System PCA

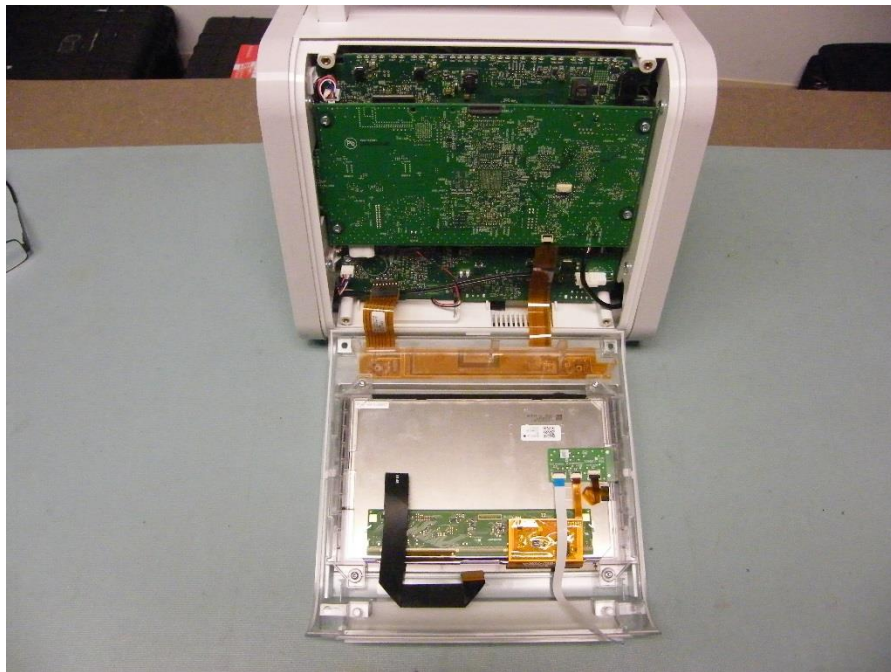


Figure 2: Trilogy EVO Device with front panel partially removed showing System PCA, Display PCA, Keypad and Display.



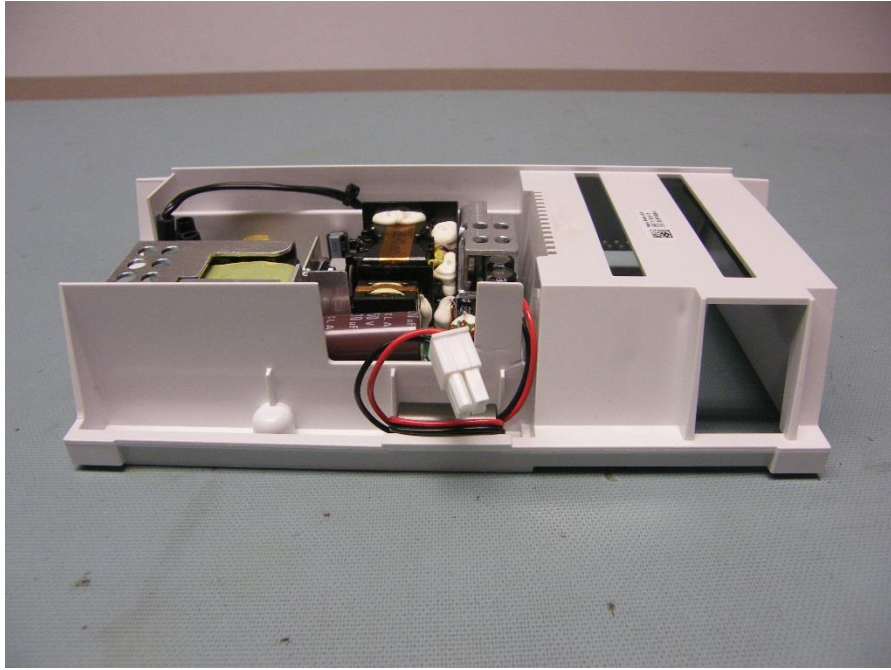


Figure 3: Trilogy Evo base showing power supply and Internal Battery compartment

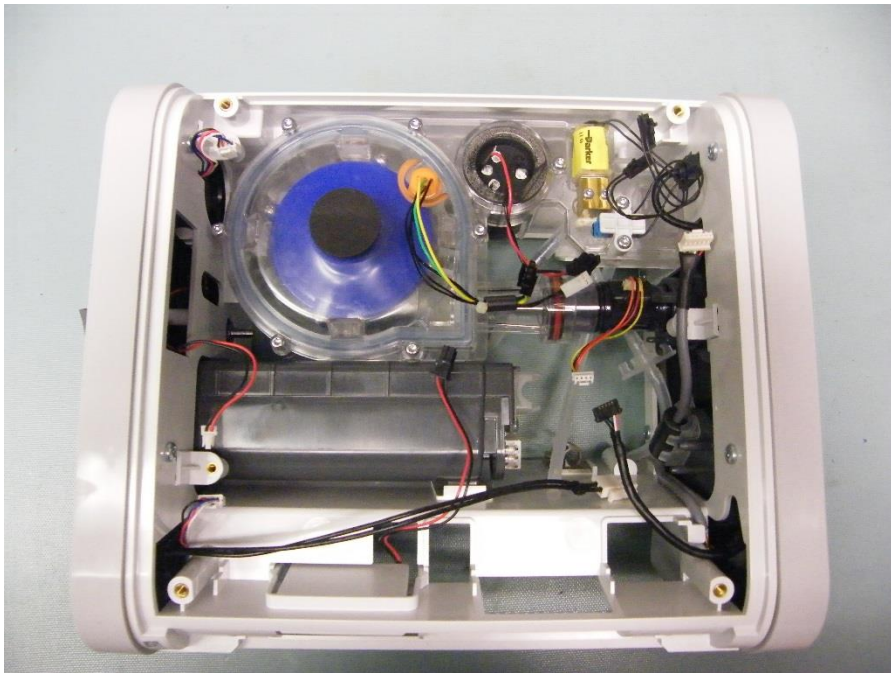


Figure 4: Rear View of Trilogy EVO showing Blower and Detachable Battery compartment.



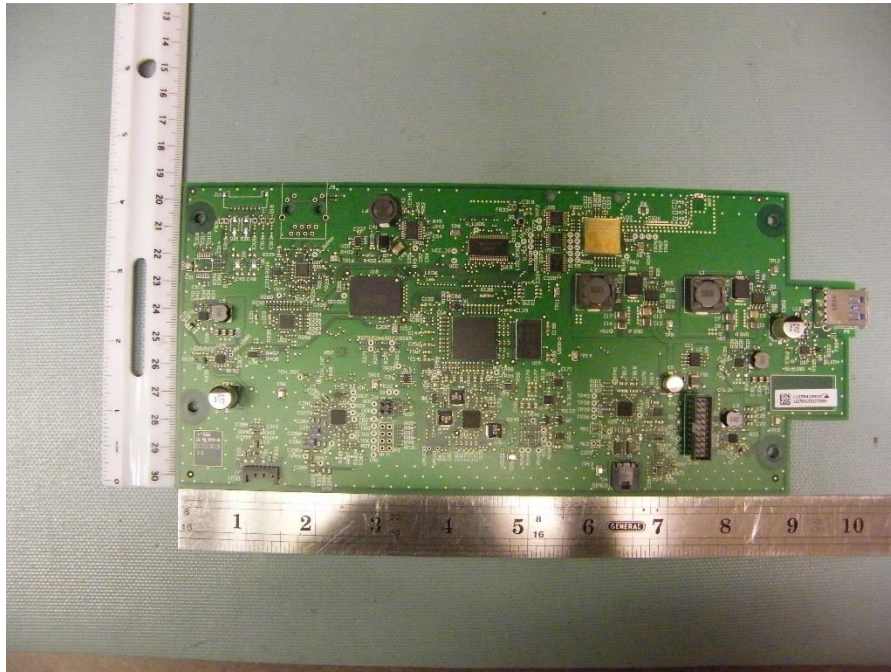


Figure 5: Top View of Trilog EVO Display PCA

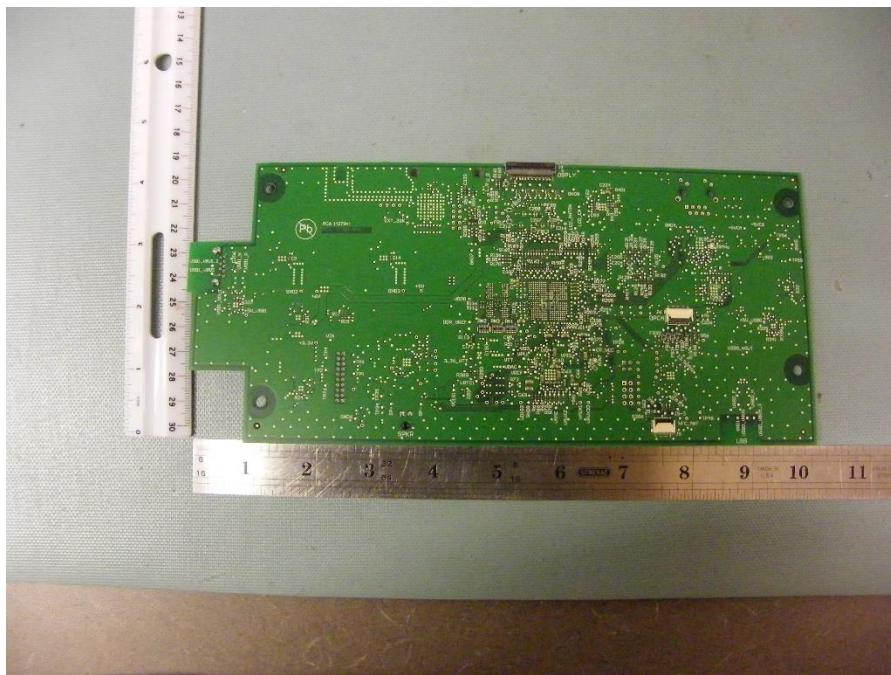


Figure 6: Top View of Trilog EVO Display PCA



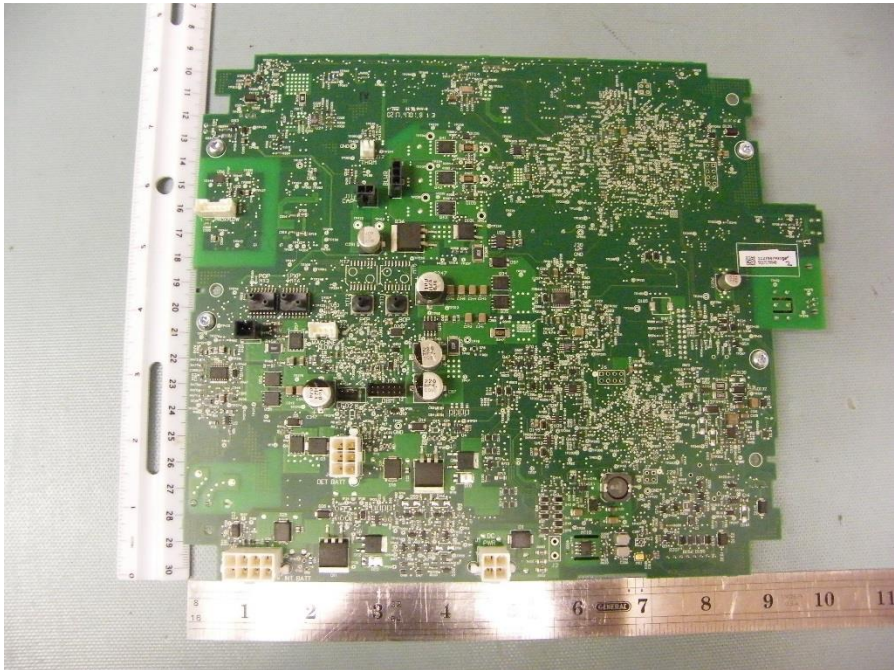


Figure 7: Top View of TrilogY EVO System PCA

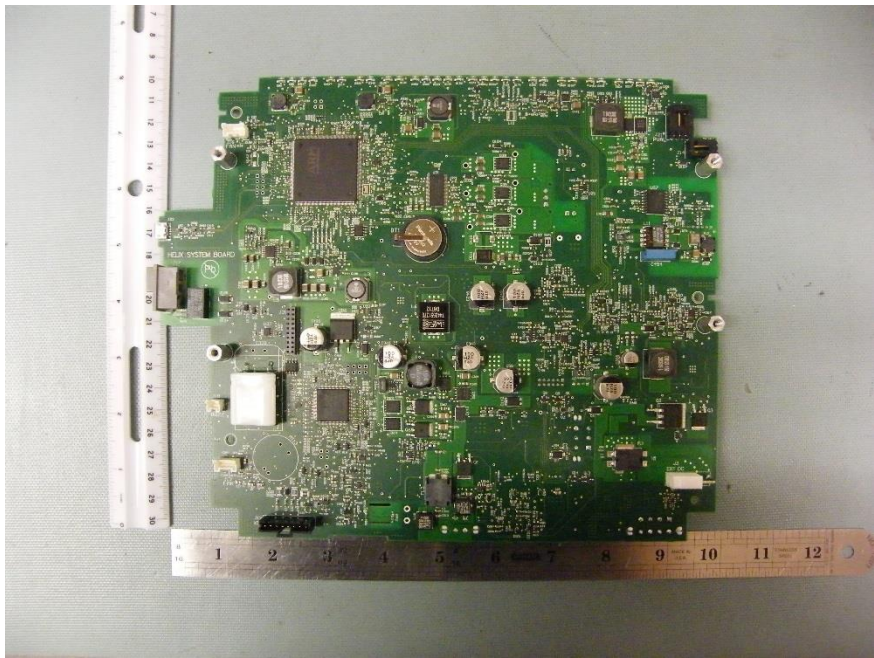


Figure 8: Bottom View of TrilogY EVO System PCA





Figure 9: Rear View of OBM version Trilogy EVO with filter removed



Figure 10: Rear View of OBM version Trilogy EVO with OBM module removed



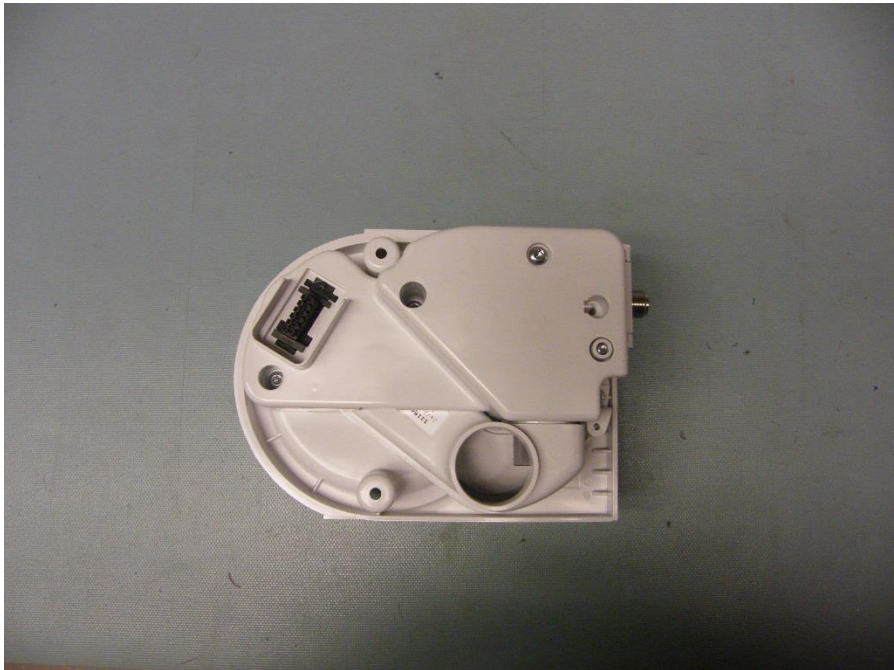


Figure 11: OBM module

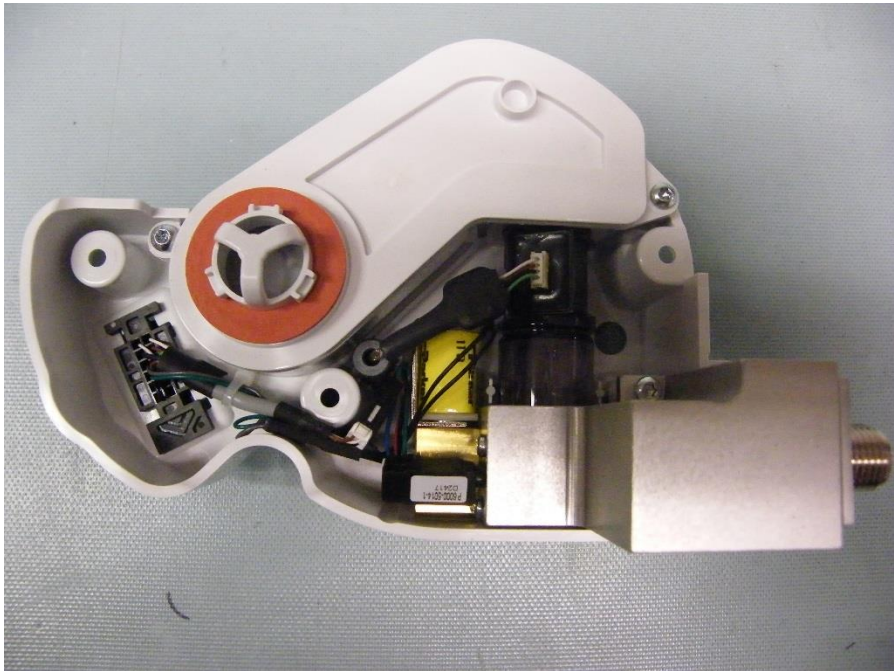
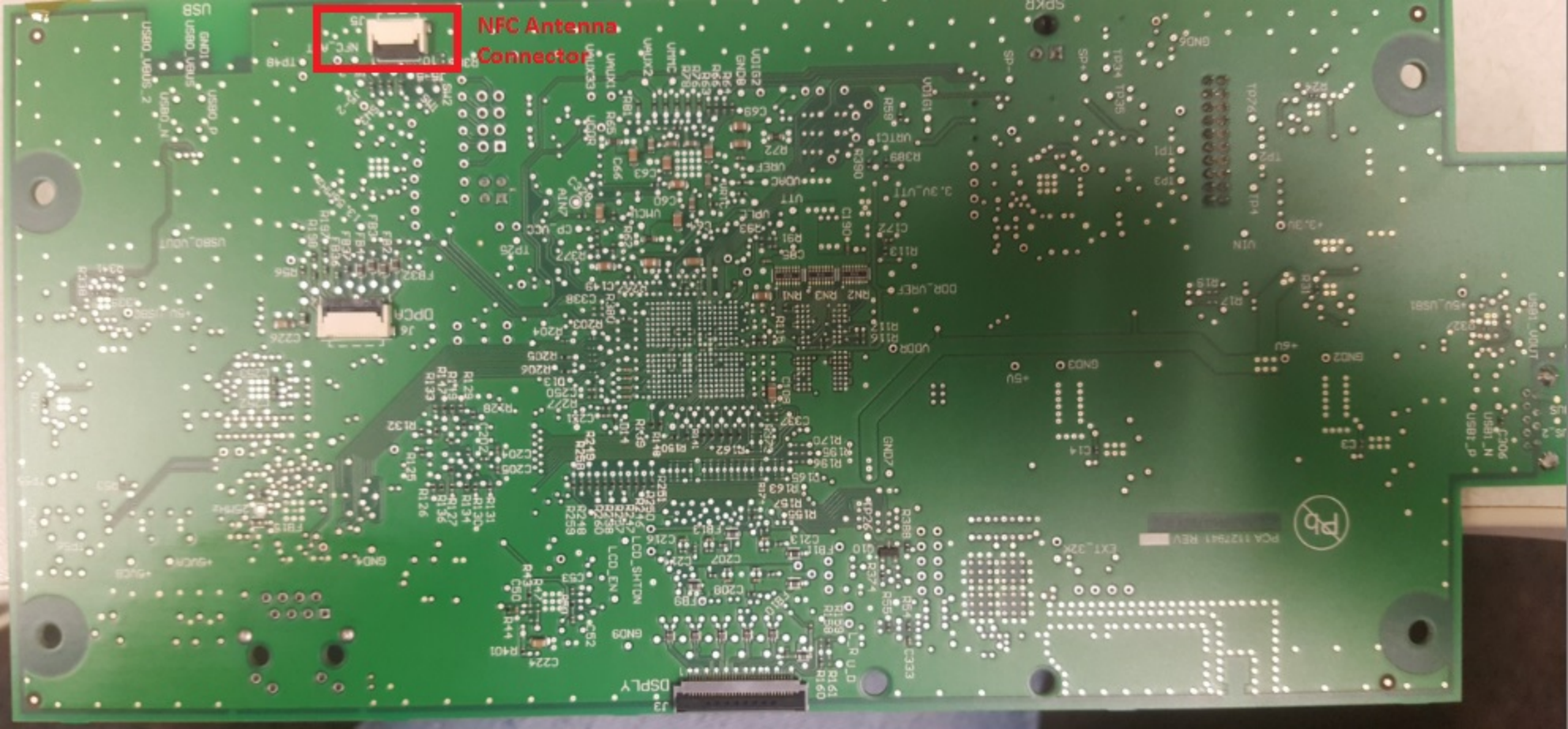


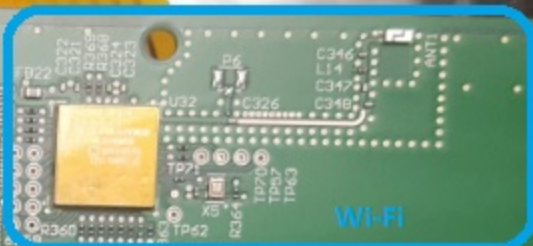
Figure 12: Interior View of OBM module





**NFC Antenna
Connector**





1117941 REVI 2
11179413017708X