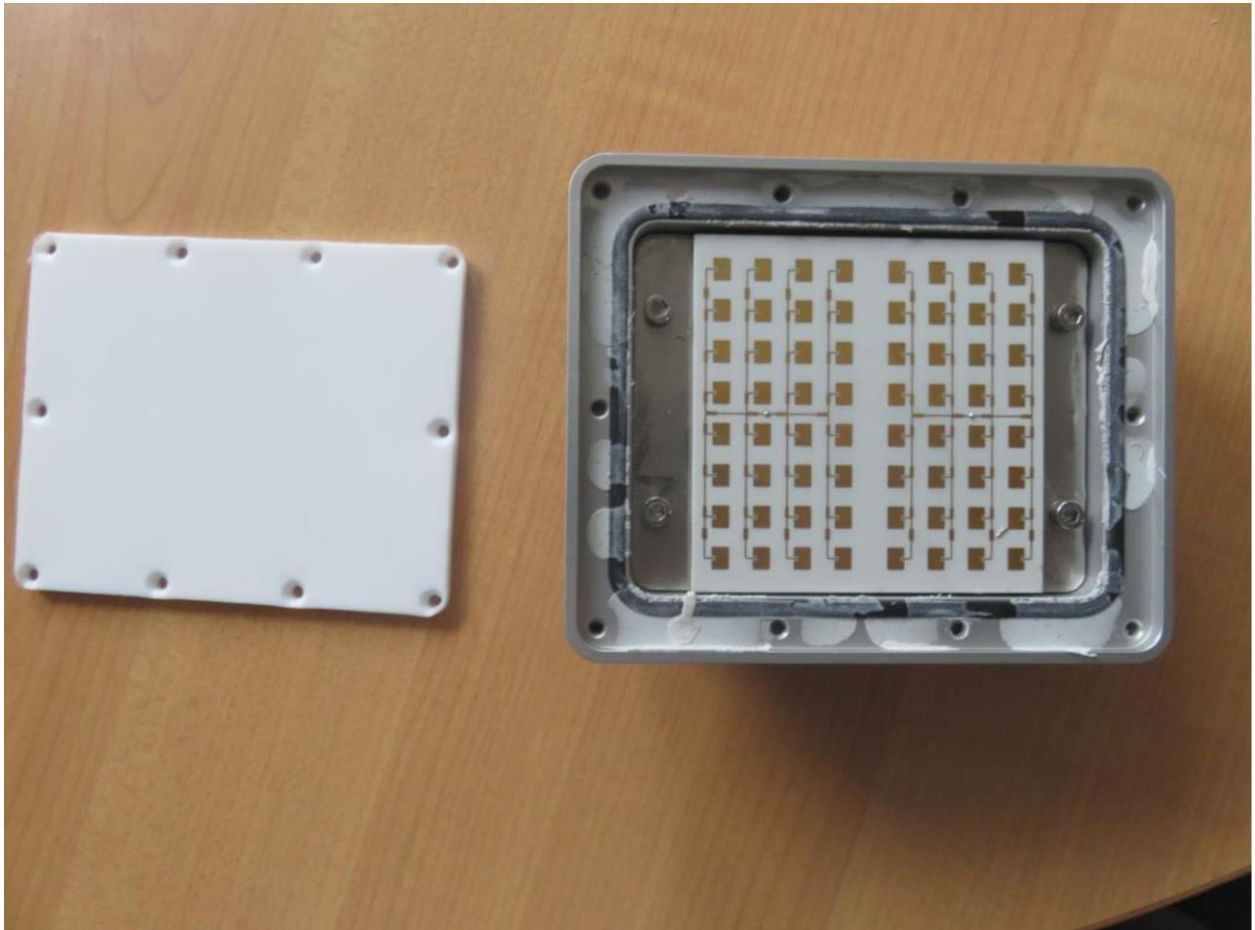
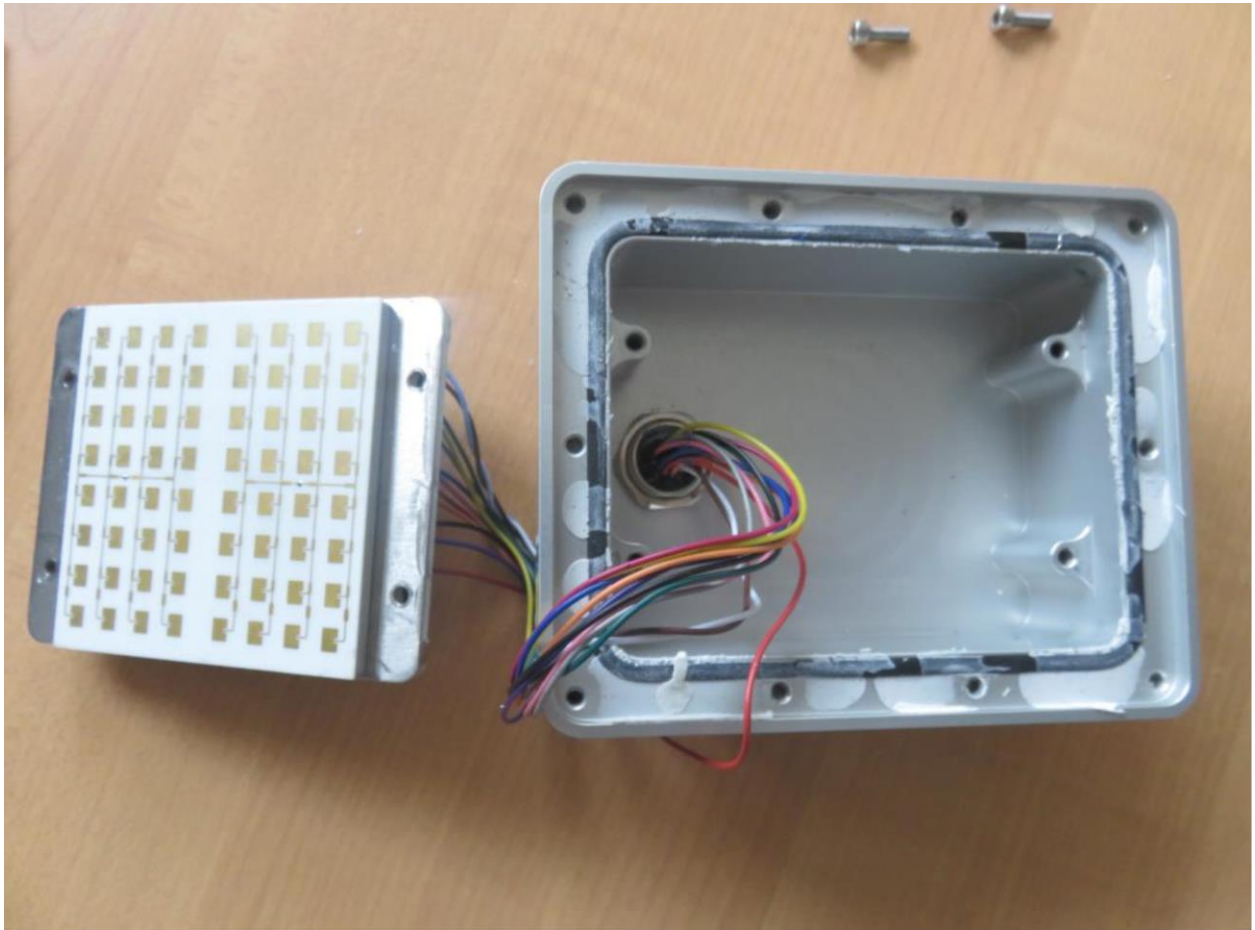


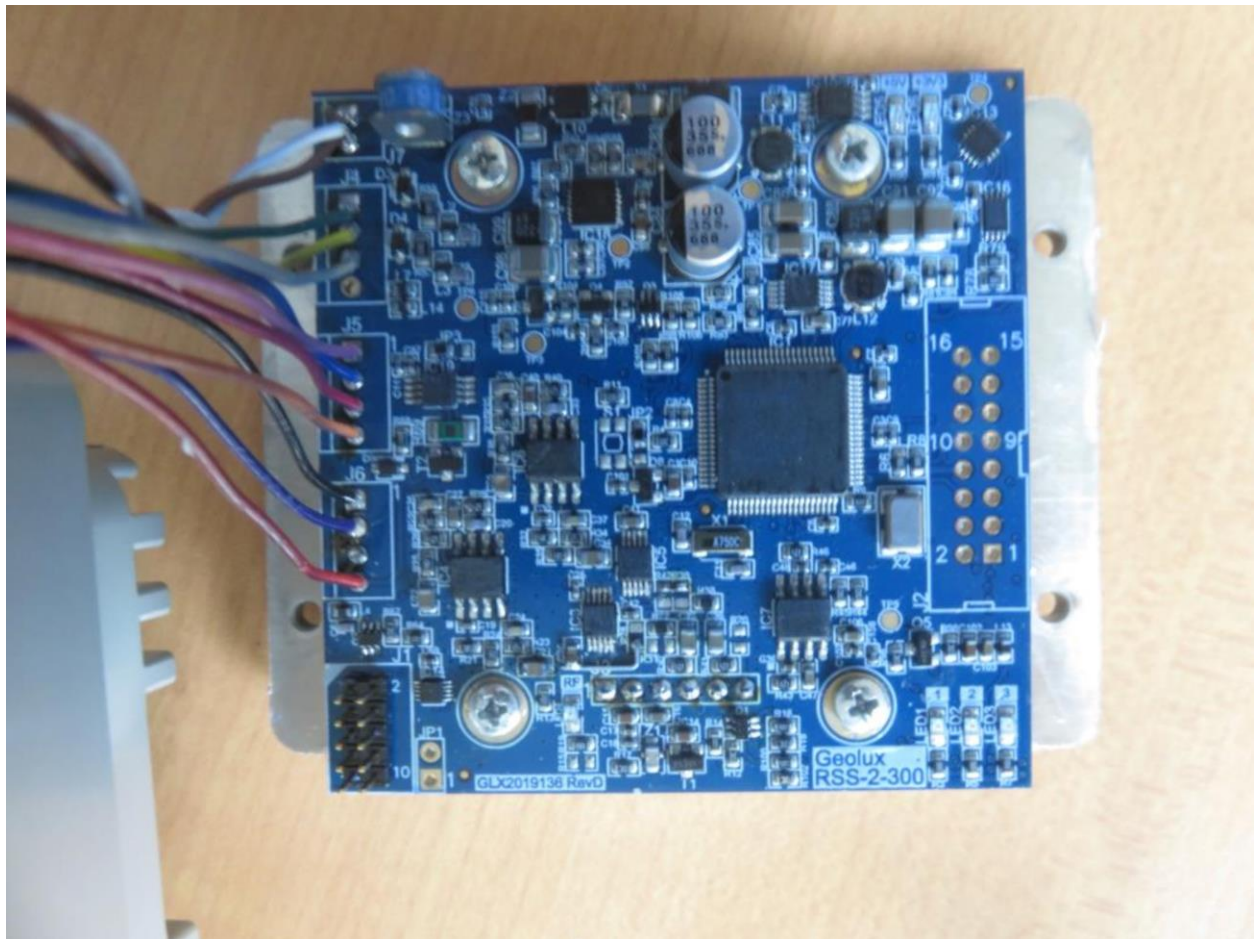
1. RSS-2-300W sensor without cover



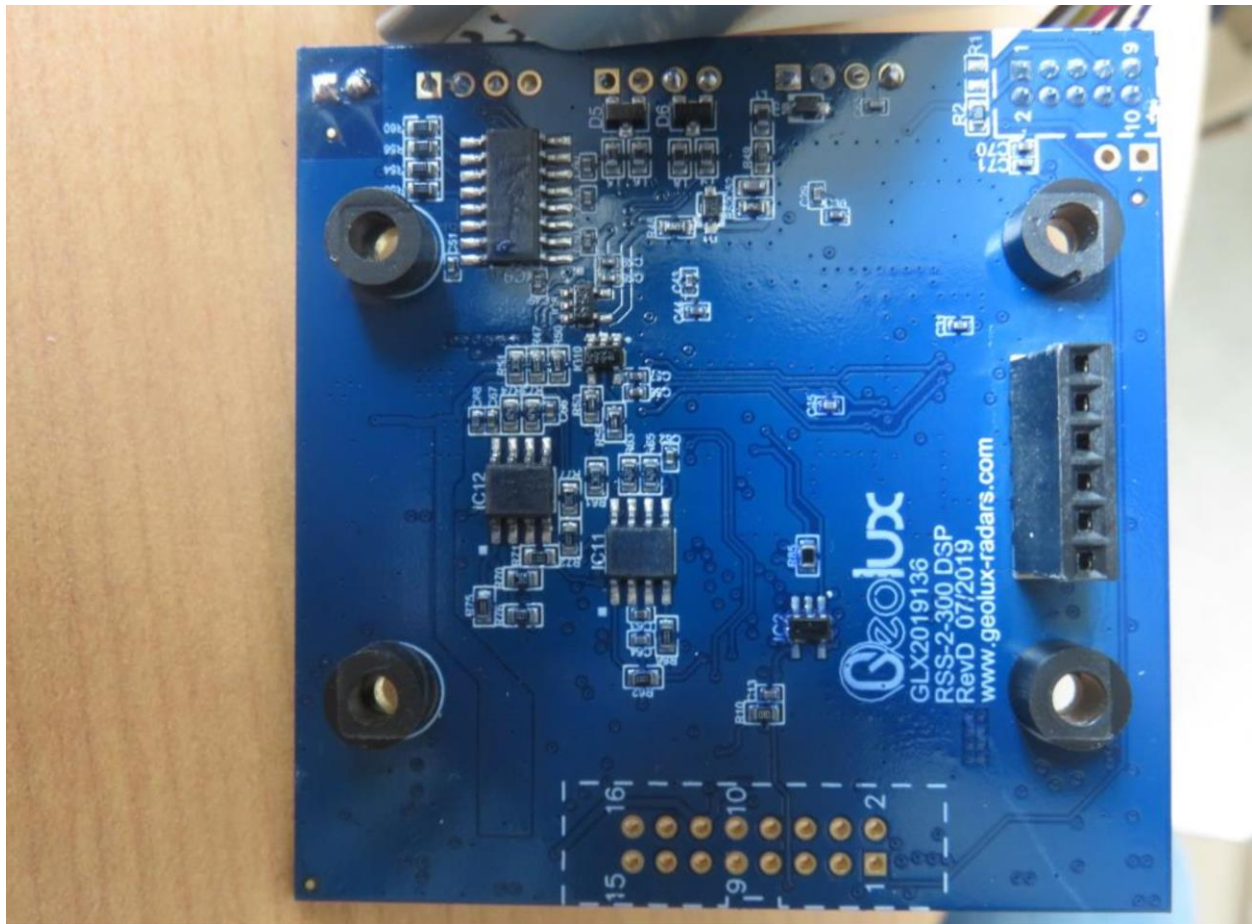
2. RSS-2-300W sensor electronics disassembled from the enclosure



3. RSS-2-300W electronic module top view

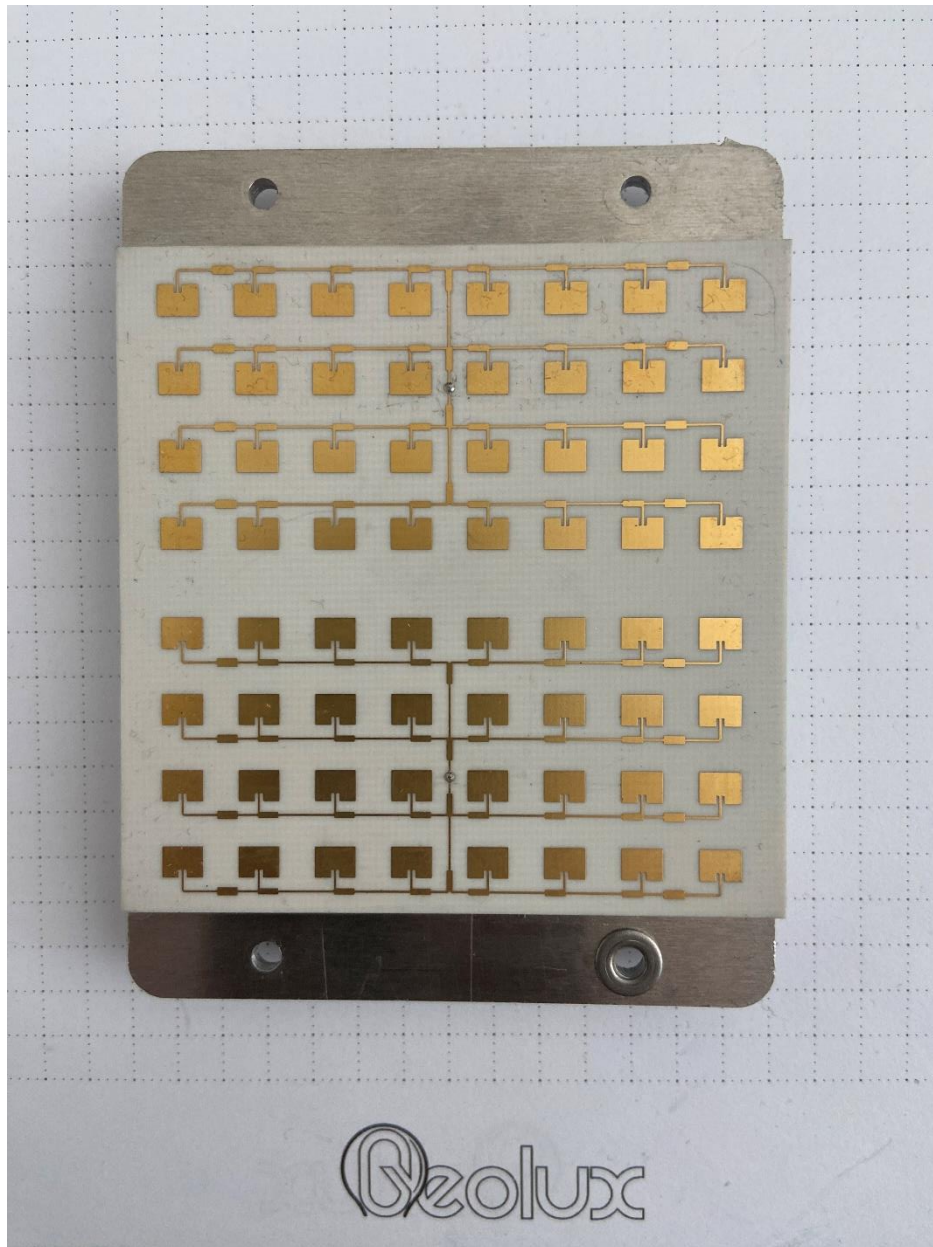


4. RSS-2-300W electronic module bottom view

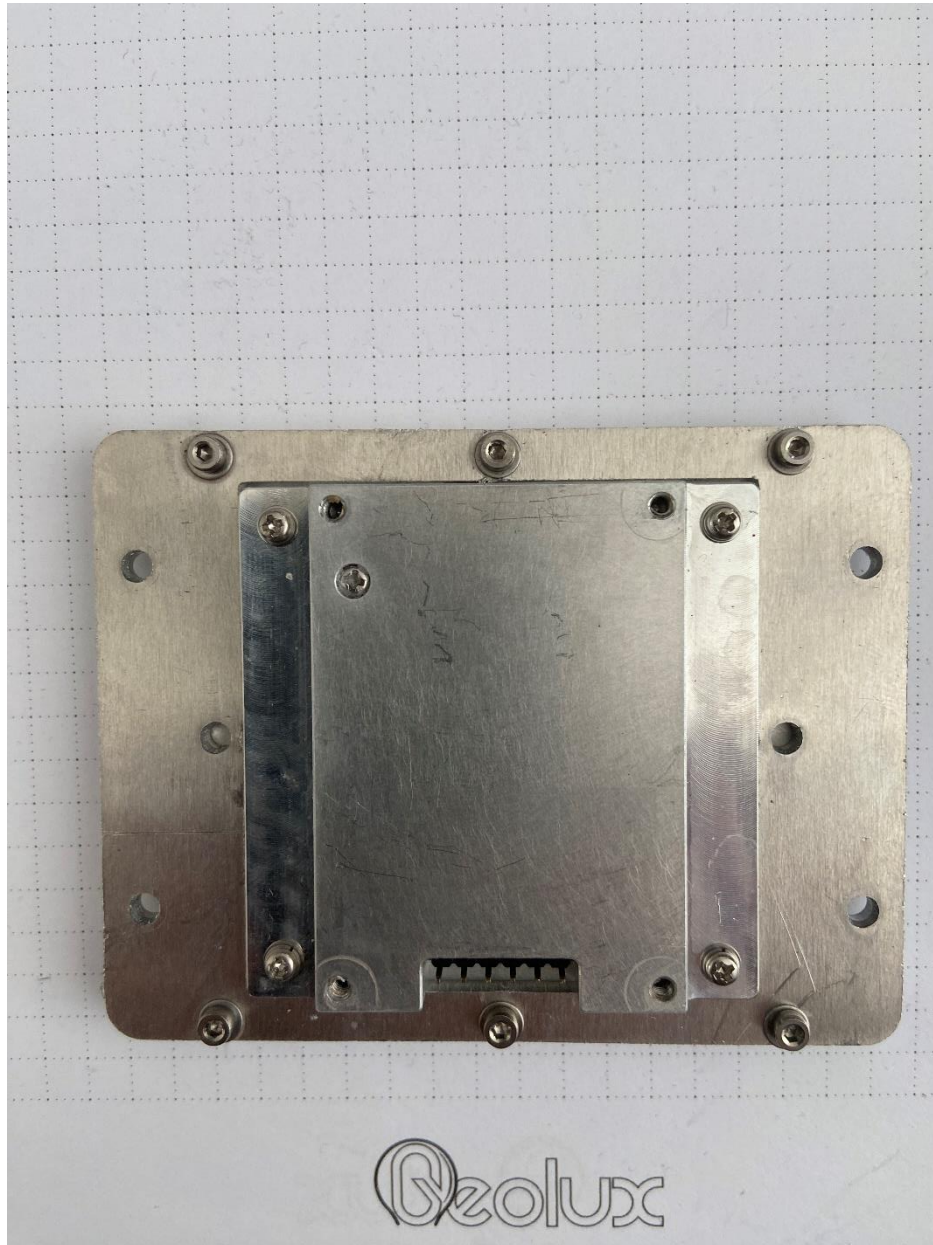




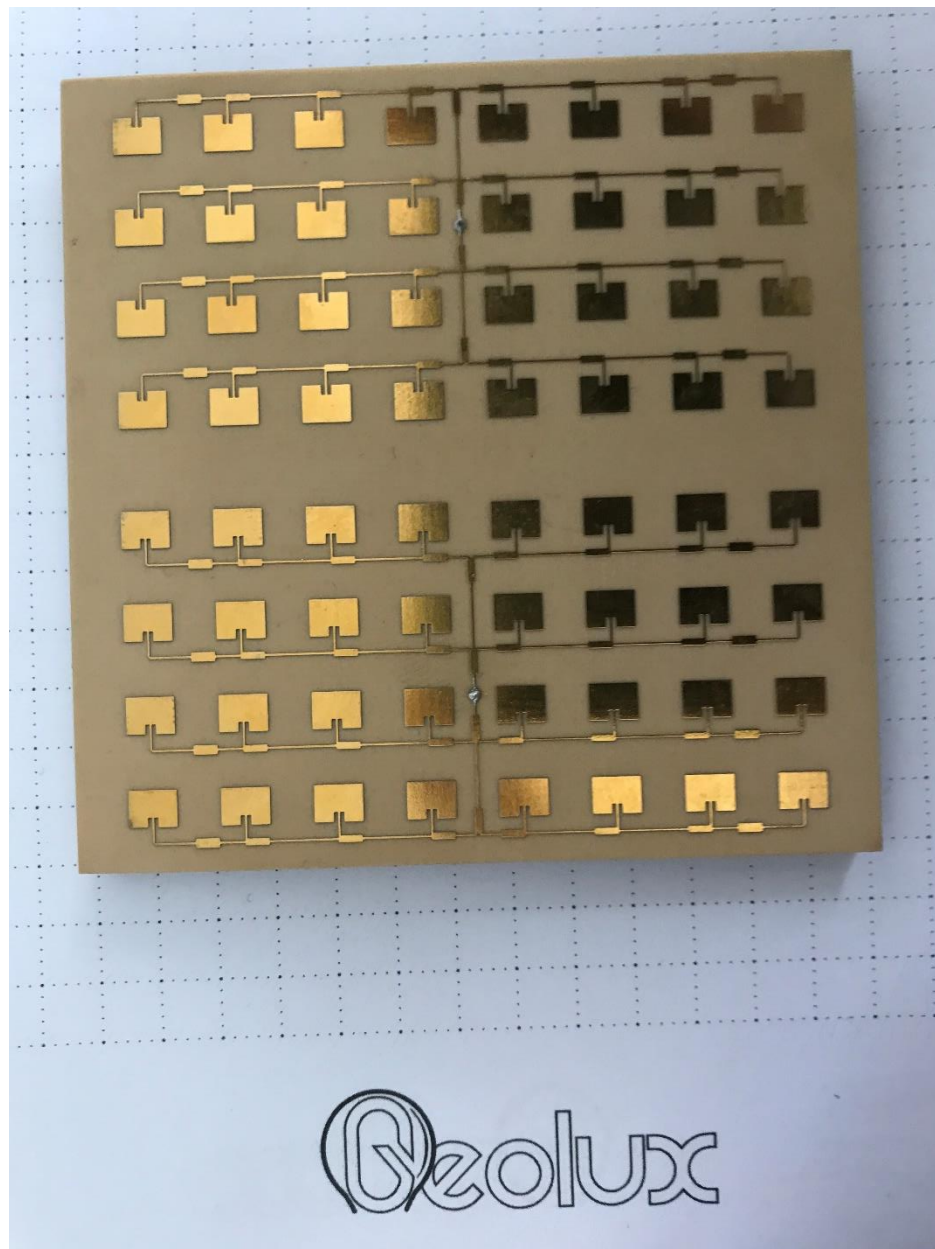
5. RSS-2-300W microwave transceiver front view (assembled)



6. RSS-2-300W microwave transceiver back view (assembled)

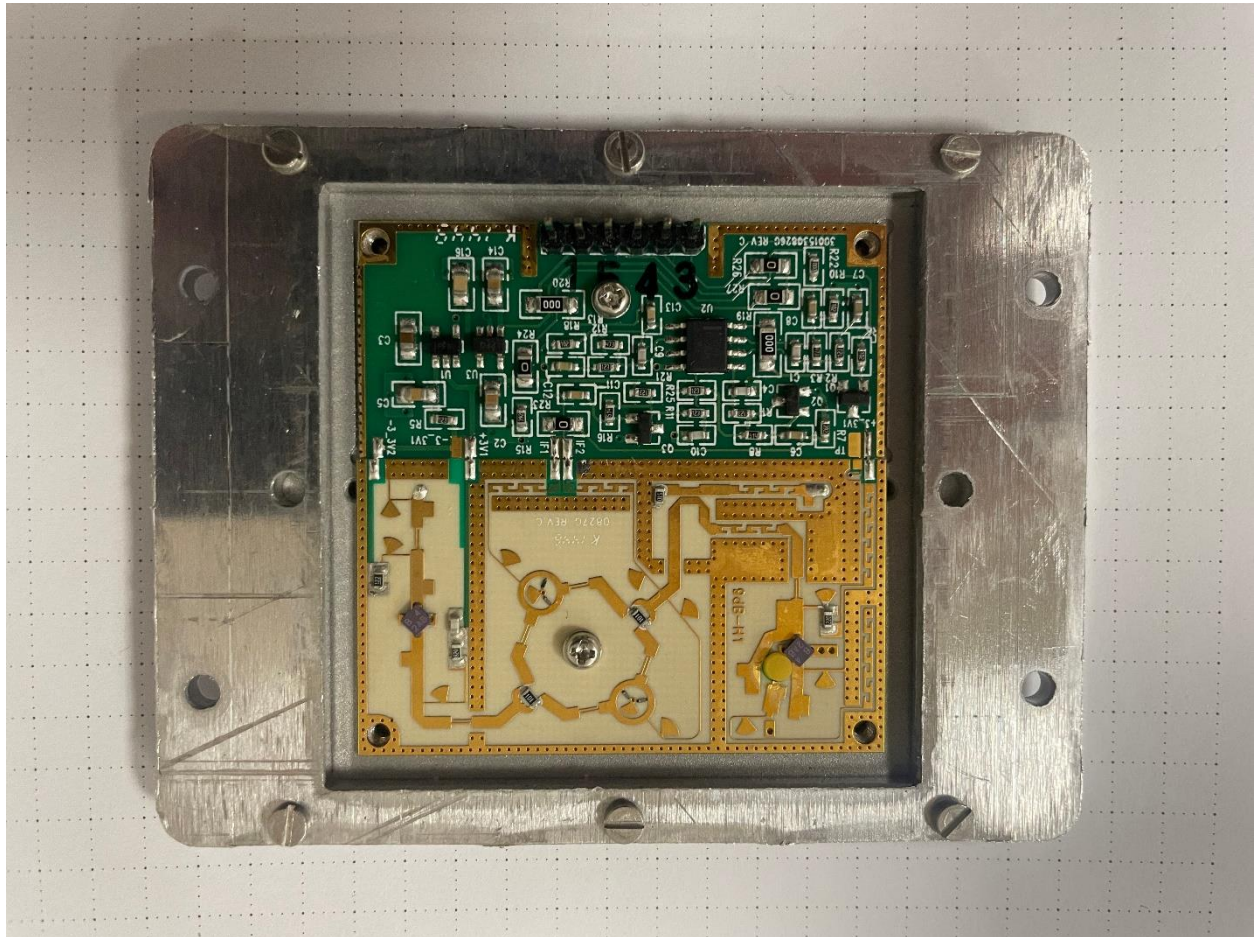


7. RSS-2-300W microwave transceiver antenna board front view



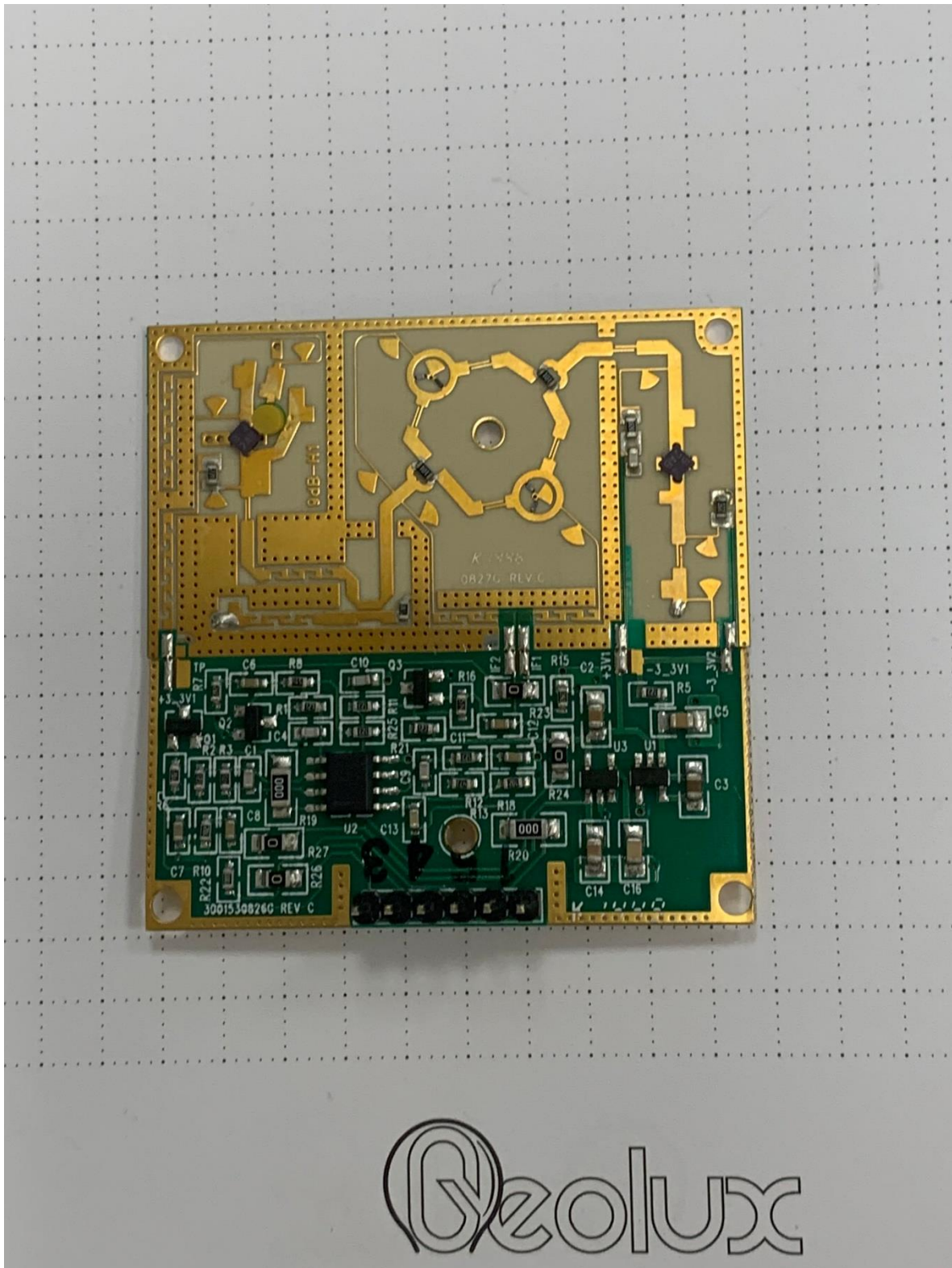


8. RSS-2-300W microwave transceiver electronics board top view (assembled)

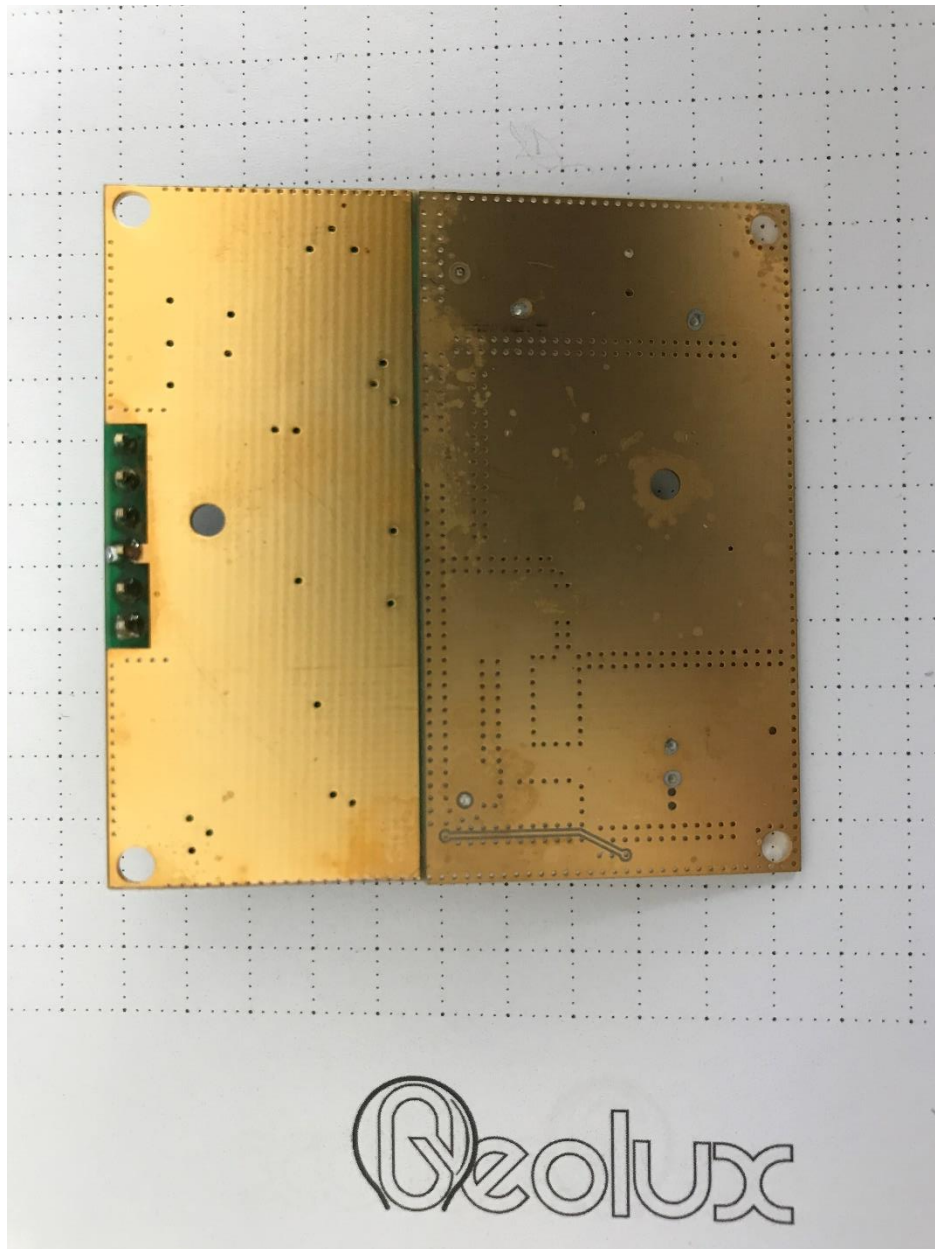




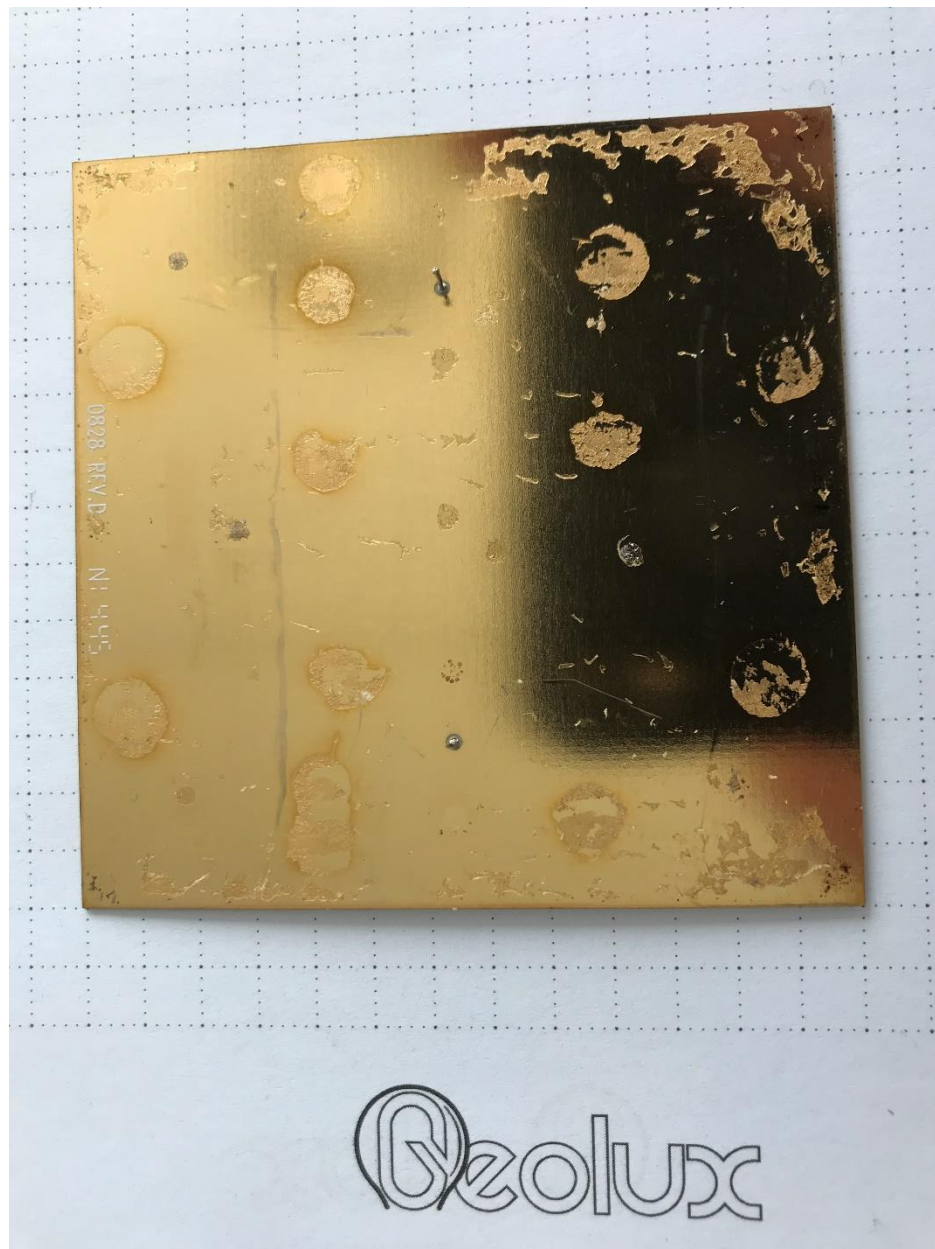
9. RSS-2-300W microwave transceiver electronics board top view (alone)



10. RSS-2-300W microwave transceiver electronics board back view



11. RSS-2-300W microwave transceiver antenna board back view





12. RSS-2-300W microwave transceiver aluminum holder module (electronics side)



13. RSS-2-300W microwave transceiver aluminum holder module (antenna side)

