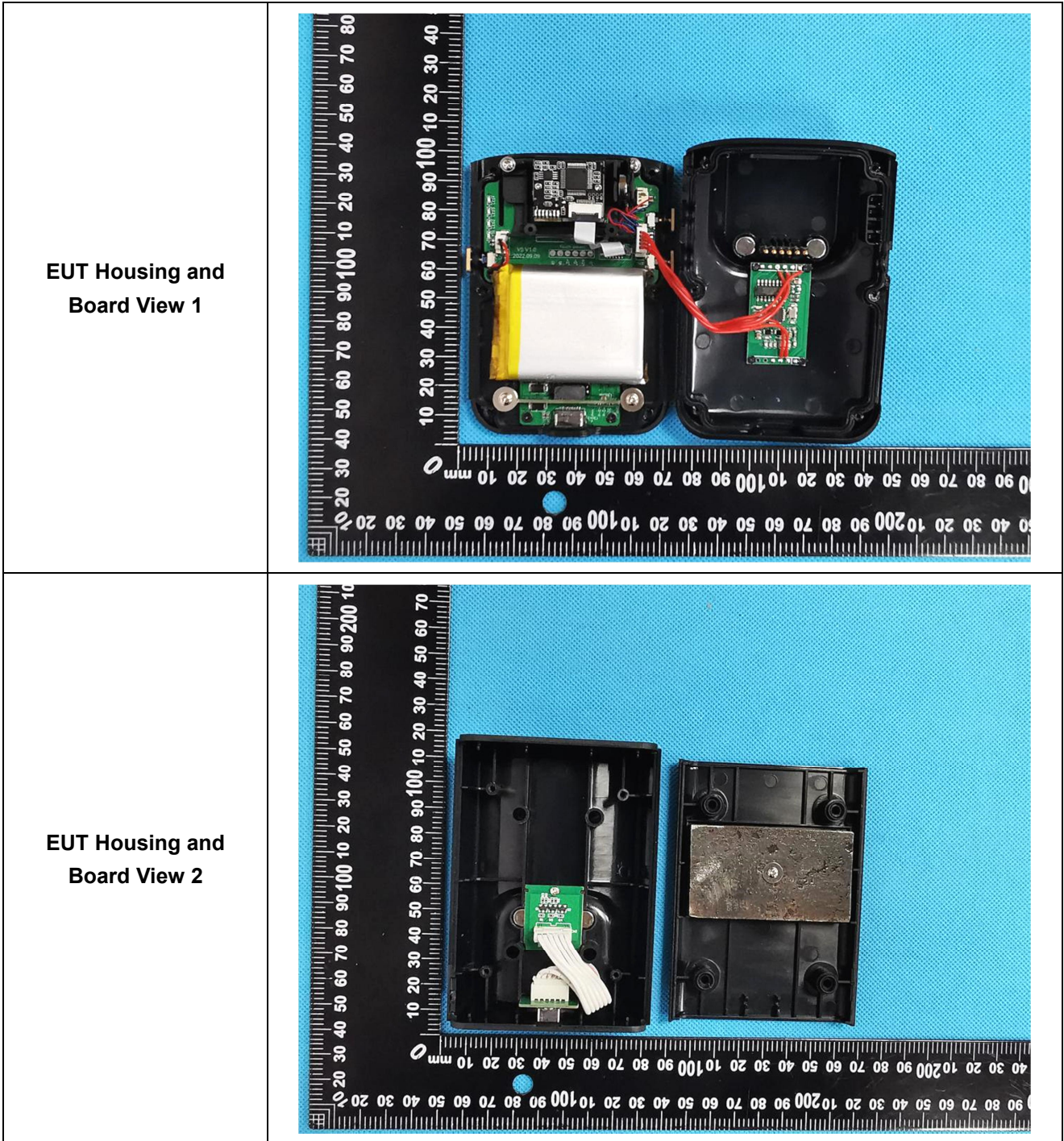
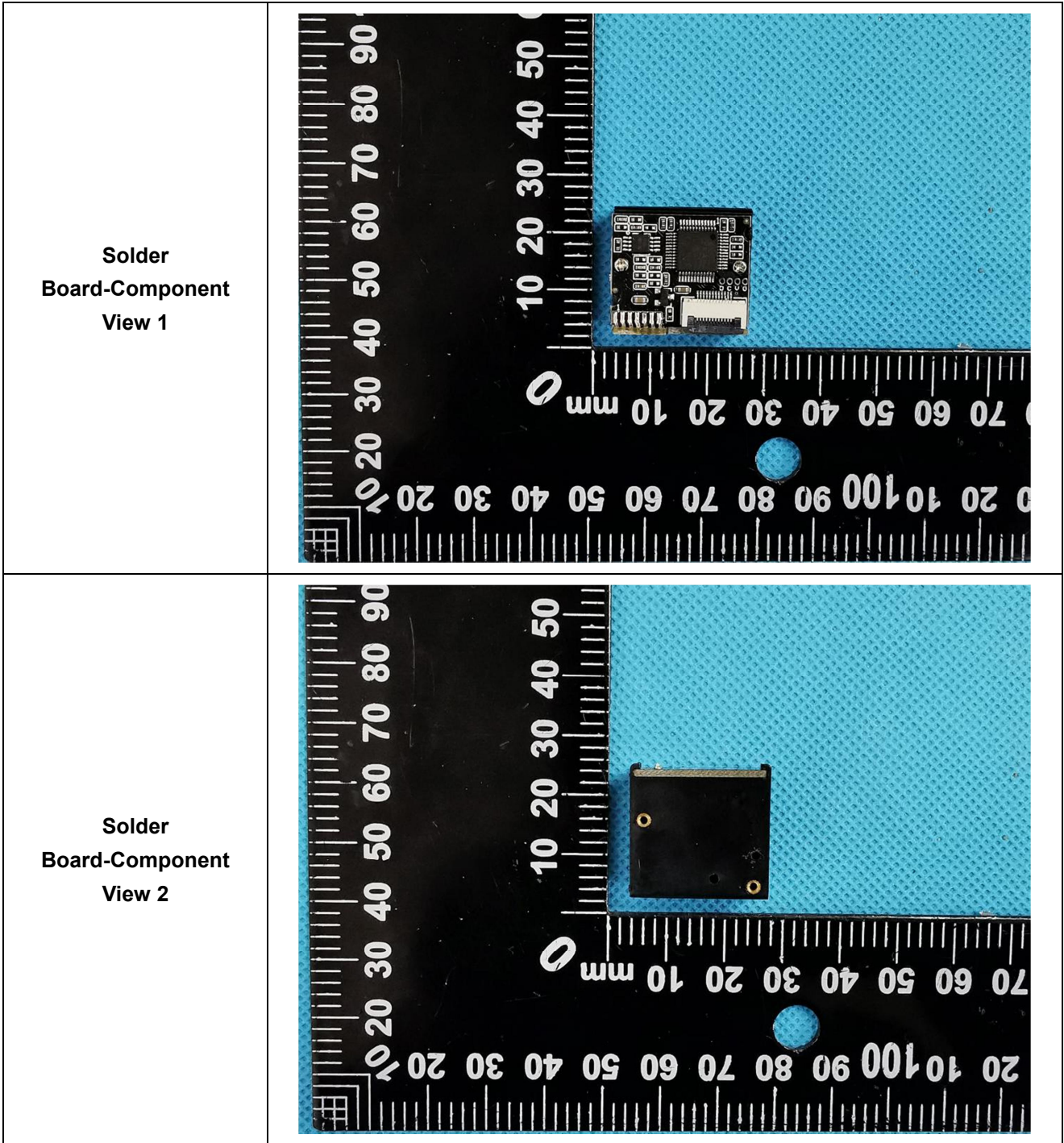
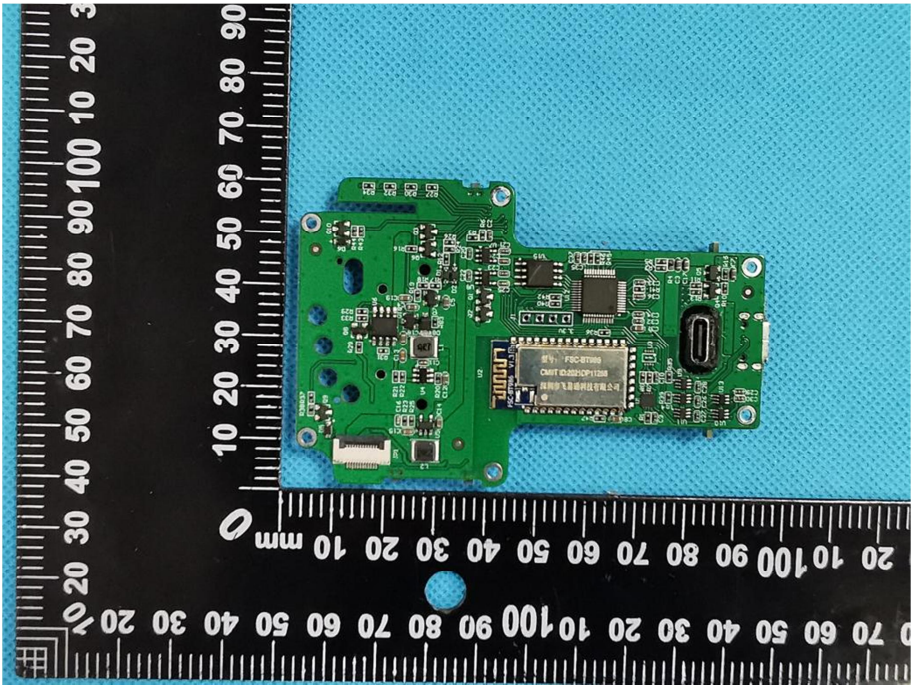
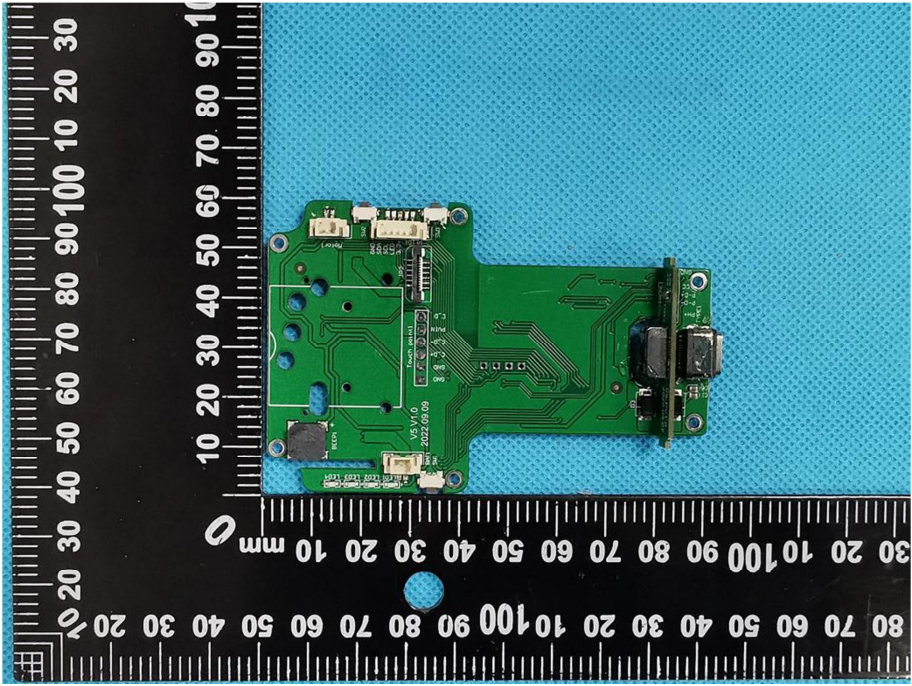
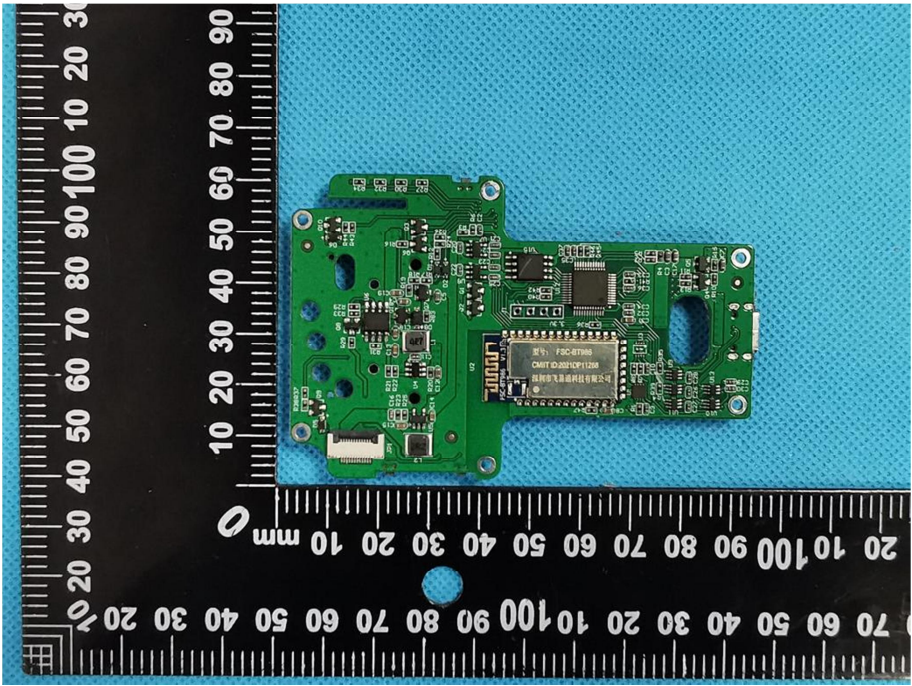
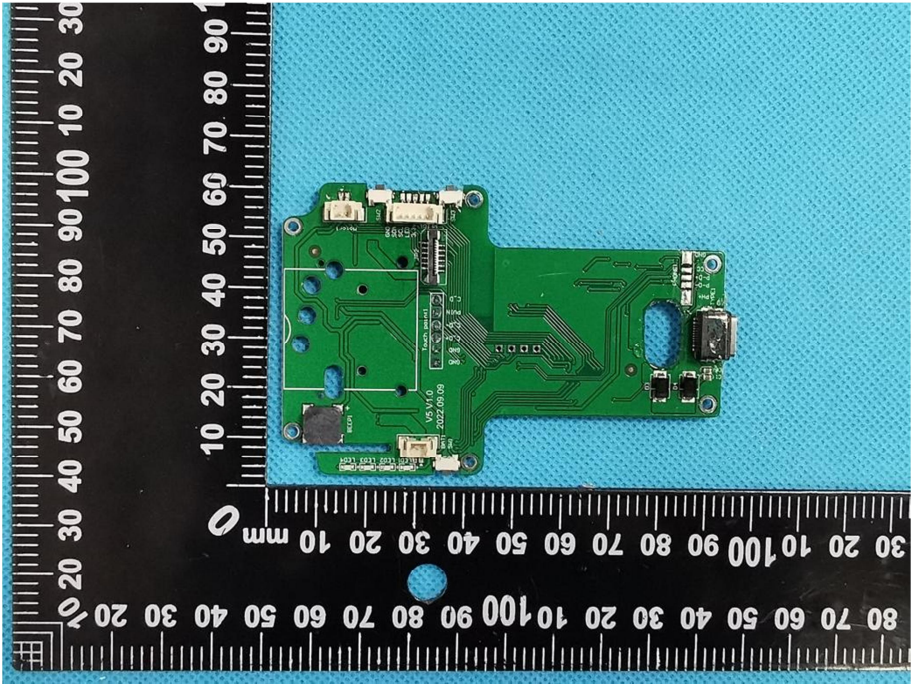


EXHIBIT 3 - EUT INTERNAL PHOTOGRAPHS





<p>Solder Board-Component View 3</p>	 <p>A photograph of a green PCB component, labeled 'View 3', placed on a blue textured surface. A black ruler with white markings is positioned vertically to the left of the component, showing measurements from 0 to 100 mm. The component features a central microchip, a USB-C port, and various other electronic components. The text 'Solder Board-Component View 3' is printed in the left column of the table.</p>
<p>Solder Board-Component View 4</p>	 <p>A photograph of the same green PCB component, labeled 'View 4', showing the reverse side. A black ruler with white markings is positioned vertically to the left, showing measurements from 0 to 100 mm. The component shows the underside of the microchip, various solder joints, and other components. The text 'Solder Board-Component View 4' is printed in the left column of the table.</p>

<p>Solder Board-Component View 5</p>	 <p>A photograph of a green printed circuit board (PCB) component, labeled 'View 5'. The board is rectangular with a complex layout of components, including a large central chip and several smaller components. It is placed on a blue textured surface. A black ruler with white markings is positioned vertically to the left of the board, showing measurements in millimeters from 0 to 100. The board's width is approximately 80 mm and its height is approximately 60 mm. The central chip has the text 'F3C-6796' and 'CMT ID:2021CP1208' visible on it.</p>
<p>Solder Board-Component View 6</p>	 <p>A photograph of the same green PCB component, labeled 'View 6'. This view shows the reverse side of the board, highlighting the solder joints and the underside of the components. The board is placed on the same blue textured surface. A black ruler with white markings is positioned vertically to the left of the board, showing measurements in millimeters from 0 to 100. The board's width is approximately 80 mm and its height is approximately 60 mm. Text on the board includes 'V3 V1.0', '2022.09.08', and 'WALTEK TESTING GROUP (SHENZHEN) CO., LTD.'.</p>