

# HD WIFI IP Alarm Camera



## FCC Warning:

This equipment has been tested and found to comply with the limits for a Class B digital device, pursuant to part 15 of the FCC Rules. These limits are designed to provide reasonable protection against harmful interference in a residential installation.

This equipment generates, uses and can radiate radio frequency energy and, if not installed and used in accordance with the instructions, may cause harmful interference to radio communications. However, there is no guarantee that interference will not occur in a particular installation. If this equipment does cause harmful interference to radio or television reception, which can be determined by turning the equipment off and on, the user is encouraged to try to correct the interference by one or more of the following measures:

- o Reorient or relocate the receiving antenna.
- o Increase the separation between the equipment and receiver.
- o Connect the equipment into an outlet on a circuit different from that to which the receiver is connected.
- o Consult the dealer or an experienced radio/TV technician for help.

Caution: Any changes or modifications to this device not explicitly approved by manufacturer could void your authority to operate this equipment.

This device complies with part 15 of the FCC Rules. Operation is subject to the following two conditions: (1) This device may not cause harmful interference, and (2) this device must accept any interference received, including interference that may cause undesired operation.

This equipment complies with FCC radiation exposure limits set forth for an uncontrolled environment. This equipment should be installed and operated with minimum distance 20cm between the radiator and your body. This transmitter must not be co-located or operating in conjunction with any other antenna or transmitter.



YOOSEE-Android



NVAS2-Android



YOOSEE-Ios



NVAS2-Ios

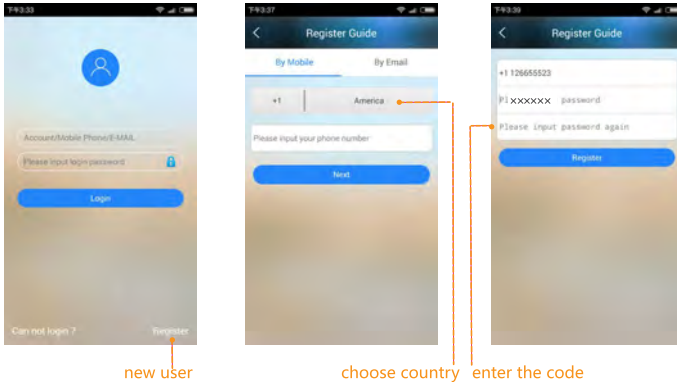
## I Download and Install APP

- 1 For iOS users, search, download and install mobile App "N-VAS2" or "Yoosee" in APP Store.
- 2 For Android users, search, download and install "NVAS2" or "Yoosee" in Google Play, or visit [www.nvas.cc](http://www.nvas.cc) or [www.yoosee.co](http://www.yoosee.co) to download and install "NVAS2" or "Yoosee"

**Note:** The device support two Apps "NVAS2" and "Yoosee", users with home appliance control are suggested to use "NVAS2", users without home appliance control are suggested to use "Yoosee". The operations of the two are the same, below, we will take "NVAS2" as an example.

## II Registration of mobile phone App

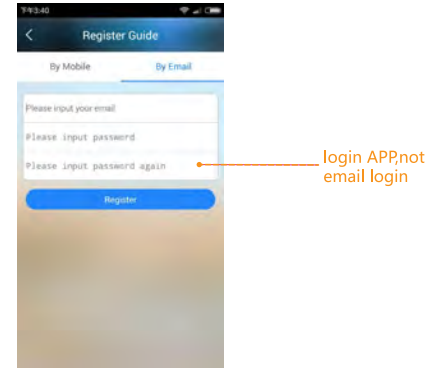
- 1 Registration of mobile phone App, just follow the instructions below:



Register by mobile phone number, follow the steps shown below, in picture 3 just input verification code and proceed as the screen prompts.

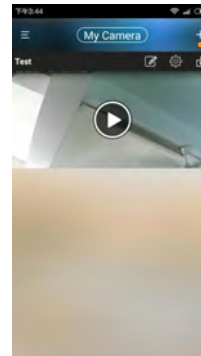
①

Register by mobile phone number, follow the steps shown below, in picture 3 just input verification code and proceed as the screen prompts.



Register by Email address, do as the instructions below.

## 2 Usage of mobile phone App



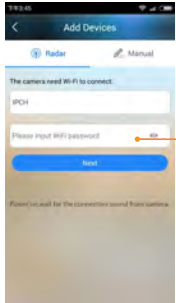
How to add devices?

Click "+" on the upper right of the interface, and add device ID to the list using radar or manually  
**Note:** use radar to add device have to be in Wifi status)

②

## 2.1 Connect Camera Via Wifi

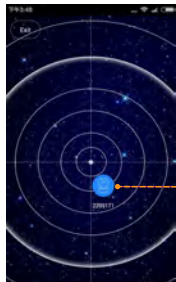
Connect the camera to power successfully, and you will hear “di di” (if there is no “di di”, press reset button on the bottom of camera for 15 seconds then restart the device)



1 The App will automatically recognize the Wifi name that your mobile phone connect to, type WiFi password (Picture 6 ) and click “Next”



2 The camera is ready to connect to WiFi



3 When you hear “di di” on your camera, and there is camera icon appear on the screen, it means camera connected to WiFi successfully

③

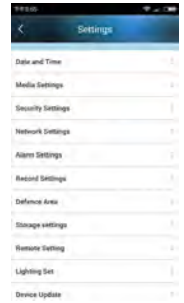


4 Click camera icon, and enter factory default password “123”, click “Save” and then, click “Exit”

④

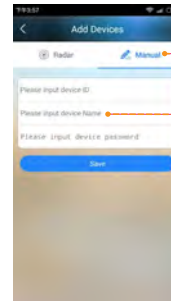


5 The added camera will be shown in the list, click play icon, you will see the monitoring screen in real-time. to set camera, please click “Settings” above device toolbar.

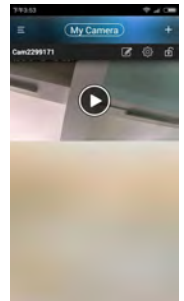


6 The picture below is the detailed information of Settings in camera, do the corresponding operation, you can change camera settings accordingly.

## 2.2 Connect Camera through Wired Way



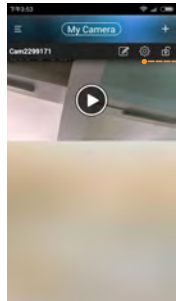
1 Connect the device to the power, connect to network cable, select “Manual” to manually add device, input device ID , device name (users can edit by themselves), device password “123”, then, click “Save”



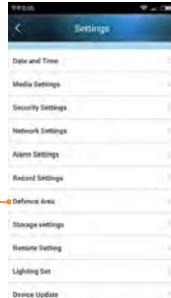
2 The added camera will be shown in the list, click play icon, you will see the monitoring screen in real-time.

### III Bind alarm accessories with device

The device can be used with alarm accessories, such as door sensor, motion detector, smoke detector, gas detector etc. Step by the steps below to bind alarm accessories with camera:



Settings



Defense Area

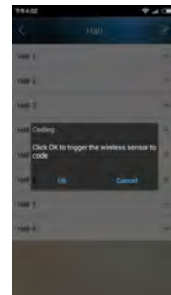
1 Run App NVAS2, add the camera to device list (in Chapter 3 ) and click "Settings"

2 Select "Defense Area"



3 The device support 8 defense area, 64 alarm accessories, take "Hall" as an example:

⑤



4 Click "+" icon of "Hall 1", click "OK" and at the same time trigger wireless sensor to code



long press Hall 1 blank space(unbind)

- 5 As you can see the picture below, code learning successfully (bind successfully),
- 1.if you need to delete the coded detectors of a hall, long press the blank area behind the Hall name .
  - 2.If you need to delete all detectors of all the Halls, long press group name (Hall), and delete all as the prompts shown .

### IV Button functions of main monitoring interface



- switch image quality
  - Memory point
  - switch to preset position
  - monitoring sound
  - screenshot
  - record to cell phone
  - arm/disarm
  - exit
- long press symbol can talk with camera

⑥

## V Set up the Alarm Function

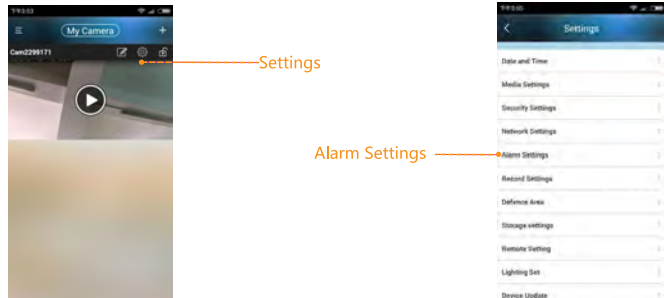
### 5.1 Ways to Arm/Disarm:

- 1 APP remote control, add camera to device list , click the lock icon to do arm/disarm control.
- 2 Remote Control: You can do arm/disarm control using remote control coded successfully with the camera, please see the picture on right:



- ①Arm Button;②Disarm Button;③ SOS Button;④No Function Button.

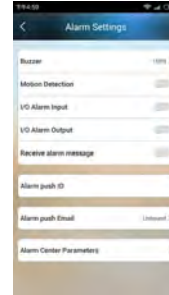
### 5.2 Alarm Setting:



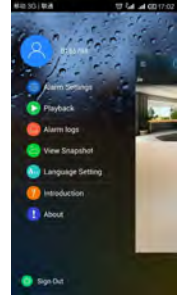
- 1 Go to device list, click "Settings" above device toolbar

⑦

- 2 Select "Alarm Settings"



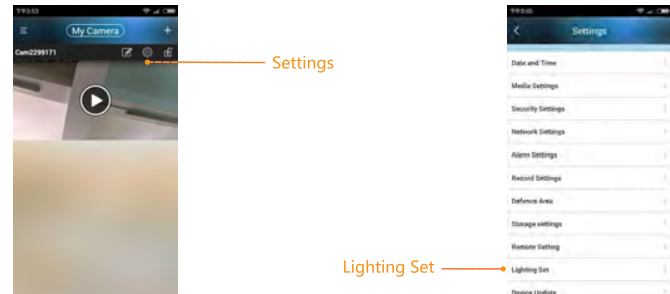
- 3 Set up the alarm push  
Alarm Push ID: Open it to receive pushed message when alarm triggered.  
Alarm Push Email: Add your email to receive the captured picture from camera when alarm triggered



- 4 In "Alarm Logs" on the maintoolbar, you can view related information when alarm triggered, In "View Snapshot", you can view captured photo.

## VI Home appliance Control

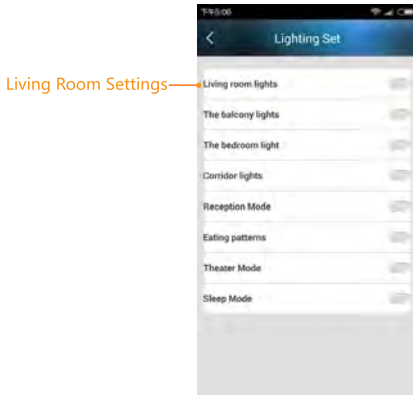
( The function is choosable for one type)



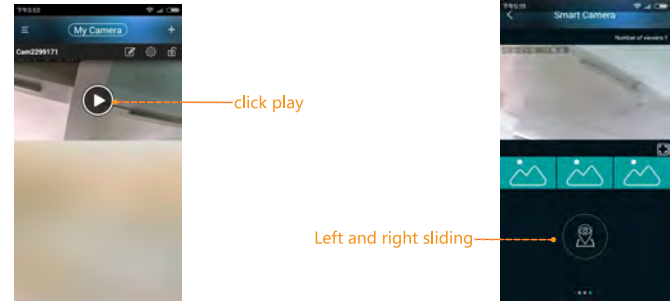
- 1 Go to device list, click "Settings" above device toolbar

⑧

- 2 Select "Remote Setting" or "Lighting Set"



3 Take "Lighting Set" as an example: first, make your home appliance control in code learning status, drag the spray icon next to "Living Room Settings" to right, then home appliance control switch will receive a valid code and will get a coding successfully prompts (different home appliance gets different prompts, please refer to manual of home appliance control switch, it is suggested to code on single on, single off status). Then, coding is successful, scroll the spray icon next to "living room lighting" to control living room lighting.



1 Go to device list, click play button to enter real-time monitoring interface

2 Scroll (horizontal direction) the operation column in the bottom position until view the preset icon

## VII Preset memory points function

(The function is choosable for one type, Android phone operation)

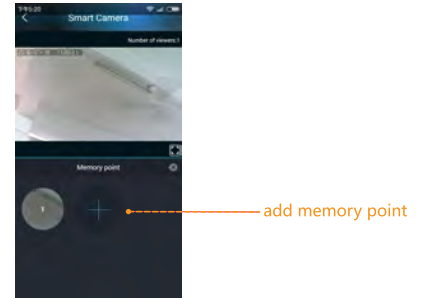
User can preset 5 memory positions, it's normal if the memory position has a slight difference, please adjust manually.

### Function 1:

Camera can quickly and precisely turn to preset position: it means when in the monitoring status, click the "Memory Point" which has already been set up as steps below, the camera will quickly and precisely turn to position of the memory point.

### Step by step to set up:

⑨



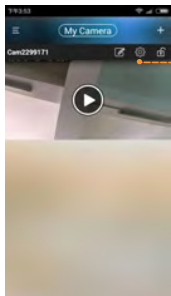
3 Adjust the camera lens to a position that need to memory, and then click camera icon, then click "+" save the memory point, repeat the operation, you can set 5 memory points for maximum.

### Function 2:

When the detector alarms, it can automatically and precisely turn to the preset memory position, this function can only be used after you preset your memory point (in function 1), and only be available in hall zone.

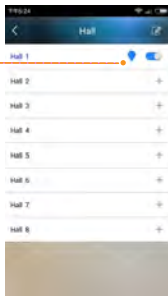
### Step by step to set up:

⑩



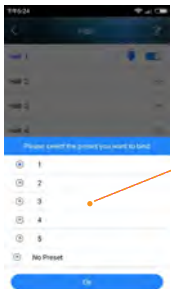
Settings

1 Go to the device list, and click "Settings" of the toolbar above the device.



click drop flag

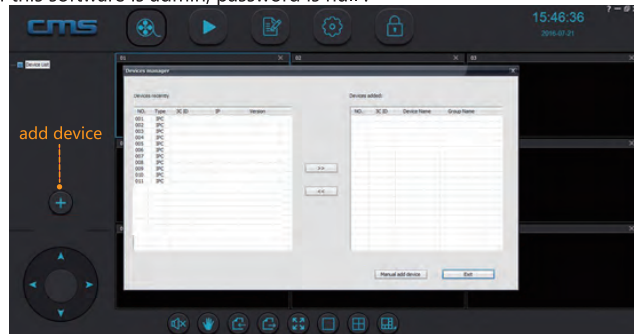
2 Select "Defense Area" and then select a "Hall" which has already coded with detectors to bind the preset memory point, and click drop icon behind it.



3 Select the memory point that you need to bind, and click "OK", then the binding is completed. When the memory position is triggered alarm, camera will be turning to the binded memory point automatically and precisely.

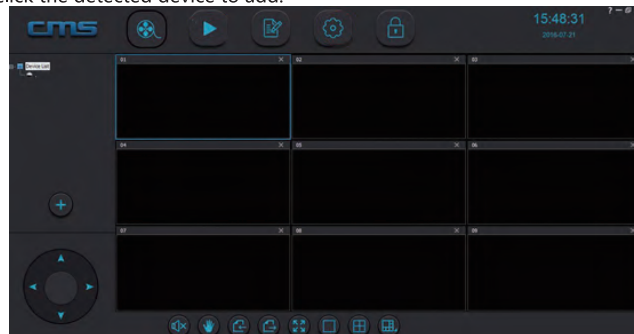
## VII Computer User

Click [www.nvas.cc](http://www.nvas.cc) on your computer, download CMS, the login name of this software is admin, password is null.



add device

1 Press "+" button on the left panel of CMS software to pop up device management interface, you can manually add device or double click the detected device to add.



2 Select device name, then click right mouse button and choose the corresponding menu to do the corresponding operation. Click the buttons on the top right to do the corresponding management for CMS software.

1 **Q:** When view video in real-time, it prompts that your password is incorrect  
**A:** Please check if the remote access password set upon adding camera is correct, if not, please click the edit icon above the device list on the main interface to edit; If you forgot the remote access password of the camera, it is suggested to press “Reset” button to restore device to factory settings, original password is “123” ;

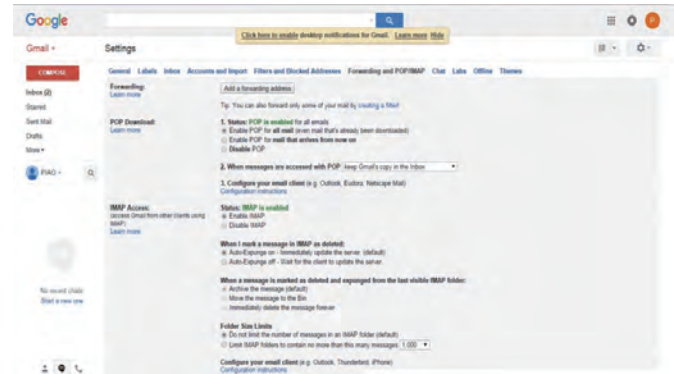
2 **Q:** The device on the device list shown as offline  
**A:** Please check if your camera is connected to the network properly, please check if the network indicator is always on; please check if router network is working properly;

3 **Q:** I can't search recorded file when playing back video  
**A:** Please check if SD card is corrupted, please check the retrieval time of recorded file, check camera system time;

4 **Q:** Wired alarm can't be used properly (only some devices have this function)  
**A:** Click “Settings” above the thumbnail of main interface camera to turn on the output and input switches of wired alarm in “Alarm Settings” ;  
 Check if ports are connected properly, the two ports next to electric socket are alarm input ports, and the two ports next to TF card are alarm output ports;

5 **Q:** My alarm Email address can't receive pictures  
**A:** Please check if your Email setting is correct, Email address service is open, take Gmail as an example

Go to “Email” -> “Settings” -> “Forwarding and POP/IMAP” -> and enable all services



## X Get more information

Thanks for taking time to read this manual! If you have other question, please contact us. Thank you.