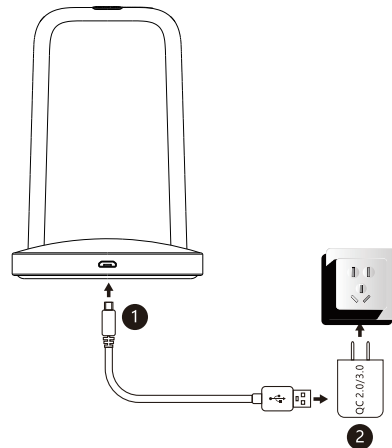
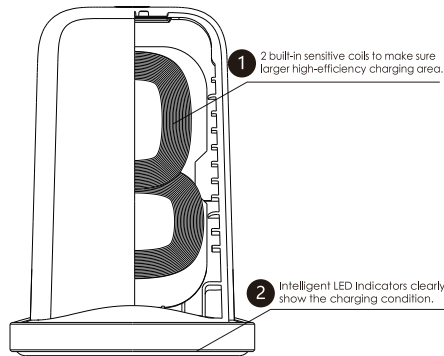


## Wireless Charger

CE RoHS  
MADE IN CHINA

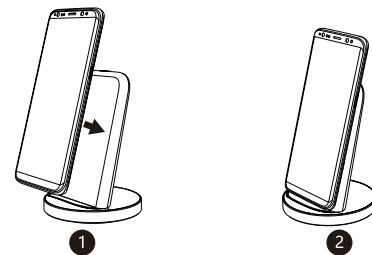
### Product Introduction

Thanks for choosing us!  
This is a wireless charger for smart phone. Let you enjoy the fun of digital products.  
Please read the manual carefully before using the product, and keep it properly for checking.



1. Connect the power adapter to socket.
2. Connect the adapter to the USB 2.0 interface, and connect the other side of Micro USB to Pad.

**NOTE: This charging pad is controlled by smart chips, which allows long-term standby.**



Connect to the power supply : LED light 1 breathing twice ( 7 seconds once ) then on standby Led Lights off On charging : LED Light 1 berathing four times ( 7 seconds once ) ,LED Light gradually breathe slowly in order ( 7 seconds once ) Full charging : LED Light 1 sleep after 5 seconds FOD ( Foreign Object Detection ) : LED Light 1 flashing once a second

**NOTE: Only Samsung mobile phones conform to the full-charging indication. Other mobiles do not have any indication after full recharged.**

### Specification

Input: DC5.0V 2.0A DC9.0V 1.8A  
Frequency: 110-205KHz  
Efficiency:  $\geq 72\%$   
Output: 10W (MAX)

### Applicable Devices

1. Devices support fast wireless charge: Samsung Galaxy note 8, S8, S8 Plus, S7, S7 Edge, Note 5, S6 Edge Plus.
2. Devices support standard wireless charge: Apple iPhone X/8/8 Plus, Samsung Galaxy S6, S6 edge, LG, Nexus 5, LUMIA950/950XL and more.
3. Devices requiring a wireless Charge receiver: Apple iPhone 5/5S/6/7, iPhone 6/7 plus, Samsung Galaxy S3, S4, S5, Note 3/4, etc.

NOTE: ALL DEVICES MUST BE QI STANDARD!!!

### Attention

1. Keeping the charger away from water and other liquid is required.
2. Please make sure the power is cut off before you start to clean the charger.
3. Use the charger under temperature only between 0-45° C.
4. work with adapter QC2.0/QC3.0

**NOTE: No power adapter coming with the package, if you need, please purchase separately.**

**FCC Caution:**

This device complies with part 15 of the FCC Rules. Operation is subject to the following two conditions: (1) This device may not cause harmful interference, and (2) this device must accept any interference received, including interference that may cause undesired operation.

Any Changes or modifications not expressly approved by the party responsible for compliance could void the user's authority to operate the equipment.

**Note:** This equipment has been tested and found to comply with the limits for a Class B digital device, pursuant to part 15 of the FCC Rules. These limits are designed to provide reasonable protection against harmful interference in a residential installation. This equipment generates uses and can radiate radio frequency energy and, if not installed and used in accordance with the instructions, may cause harmful interference to radio communications. However, there is no guarantee that interference will not occur in a particular installation. If this equipment does cause harmful interference to radio or television reception, which can be determined by turning the equipment off and on, the user is encouraged to try to correct the interference by one or more of the following measures:

- Reorient or relocate the receiving antenna.
- Increase the separation between the equipment and receiver.
- Connect the equipment into an outlet on a circuit different from that to which the receiver is connected.
- Consult the dealer or an experienced radio/TV technician for help.