

FCC TEST REPORT

For

Shenzhen Mossloo Industrial Co.,Ltd

Wireless Charging Pad

Model No.: MSL-M02Q

Prepared For : Shenzhen Mossloo Industrial Co.,Ltd
Address : Road One No.4, Science Industrial Park,Shangxue Village, Bantian
Street,Longgang District, Shenzhen,China

Prepared By : Shenzhen Anbotek Compliance Laboratory Limited
Address : 1/F, Building D, Sogood Science and Technology Park, Sanwei
community, Hangcheng Street, Bao'an District, Shenzhen, Guangdong,
China.518102
Tel: (86) 755-26066440 Fax: (86) 755-26014772

Report Number : SZAWW180601001-01

Date of Test : Jun. 01~28, 2018

Date of Report : Jun. 28, 2018

Contents

1. General Information.....	4
1.1. Client Information.....	4
1.2. Description of Device (EUT).....	4
1.3. Auxiliary Equipment Used During Test.....	4
1.4. Description of Test Modes.....	5
1.5. List of channels.....	5
1.6. Description Of Test Setup.....	6
1.7. Test Equipment List.....	7
1.8. Measurement Uncertainty.....	8
1.9. Description of Test Facility.....	8
2. Summary of Test Results.....	9
3. Conducted Emission Test.....	10
3.1. Test Standard and Limit.....	10
3.2. Test Setup.....	10
3.3. Test Procedure.....	10
3.4. Test Data.....	10
4. Radiation Spurious Emission and Band Edge.....	15
4.1. Test Standard and Limit.....	15
4.2. Test Setup.....	15
4.3. Test Procedure.....	16
4.4. Test Data.....	17
APPENDIX I -- TEST SETUP PHOTOGRAPH.....	23
APPENDIX II -- EXTERNAL PHOTOGRAPH.....	25
APPENDIX III -- INTERNAL PHOTOGRAPH.....	28

TEST REPORT

Applicant : Shenzhen Mossloo Industrial Co.,Ltd
Manufacturer : Shenzhen Mossloo Industrial Co.,Ltd
Product Name : Wireless Charging Pad
Model No. : MSL-M02Q
Trade Mark : N.A.
Rating(s) : Input: DC 5V, 1.5A
Output: DC 5V, 1A

Test Standard(s) : FCC Part15 Subpart C 2017, Paragraph 15.209

Test Method(s) : ANSI C63.10: 2013

The device described above is tested by Shenzhen Anbotek Compliance Laboratory Limited to determine the maximum emission levels emanating from the device and the severe levels of the device can endure and its performance criterion. The measurement results are contained in this test report and Shenzhen Anbotek Compliance Laboratory Limited is assumed full of responsibility for the accuracy and completeness of these measurements. Also, this report shows that the EUT (Equipment Under Test) is technically compliant with the FCC Part 15 Subpart C requirements.

This report applies to above tested sample only and shall not be reproduced in part without written approval of Shenzhen Anbotek Compliance Laboratory Limited.

Date of Test

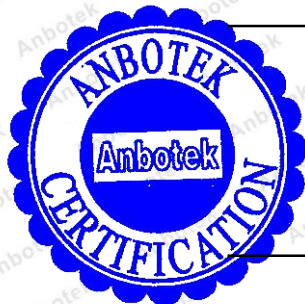
Jun. 01~28, 2018

Prepared by



(Engineer / Oliay Yang)

Reviewer



(Supervisor / Calvin Liu)

Approved & Authorized Signer



(Manager / Tom Chen)

1. General Information

1.1. Client Information

Applicant	:	Shenzhen Mossloo Industrial Co.,Ltd
Address	:	Road One No.4, Science Industrial Park,Shangxue Village, Bantian Street,Longgang District, Shenzhen,China
Manufacturer	:	Shenzhen Mossloo Industrial Co.,Ltd
Address	:	Road One No.4, Science Industrial Park,Shangxue Village, Bantian Street,Longgang District, Shenzhen,China

1.2. Description of Device (EUT)

Product Name	:	Wireless Charging Pad	
Model No.	:	MSL-M02Q	
Trade Mark	:	N.A.	
Test Power Supply	:	AC 120V, 60Hz for adapter / AC 240V, 60Hz for adapter	
Product Description	:	Operation Frequency:	110-205KHz
		Number of Channel:	20 Channels
		Modulation Type:	MSK
		Antenna Type:	Loop Antenna
		Antenna Gain(Peak):	0 dBi
Remark: 1) For a more detailed features description, please refer to the manufacturer's specifications or the User's Manual.			

1.3. Auxiliary Equipment Used During Test

Adapter	:	Manufacturer: ZTE M/N: STC-A2050I1000USBA-C S/N: 201202102100876 Input: 100-240V~50/60Hz 0.3A Output: DC 5V, 1000mA
---------	---	---

1.4. Description of Test Modes

To investigate the maximum EMI emission characteristics generated from EUT, the test system was pre-scanning tested based on the consideration of following EUT operation mode or test configuration mode which possibly have effect on EMI emission level. Each of these EUT operation mode(s) or test configuration mode(s) mentioned above was evaluated respectively.

Pretest Mode	Description
Mode 1	CH01
Mode 2	CH10
Mode 3	CH20
Mode 4	Keeping TX+Charging mode

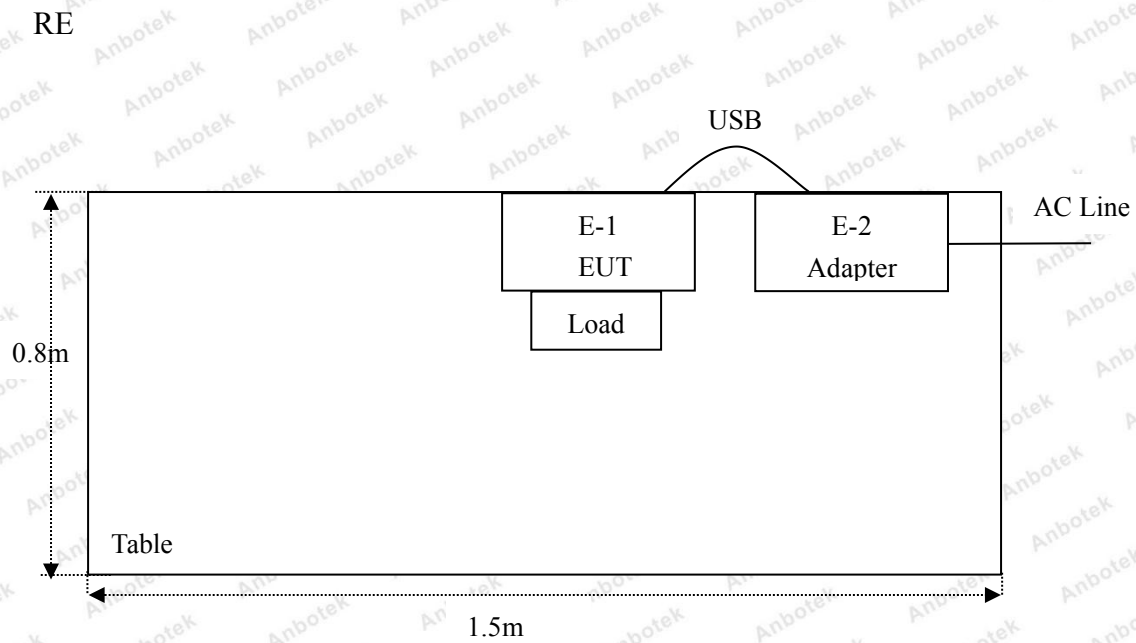
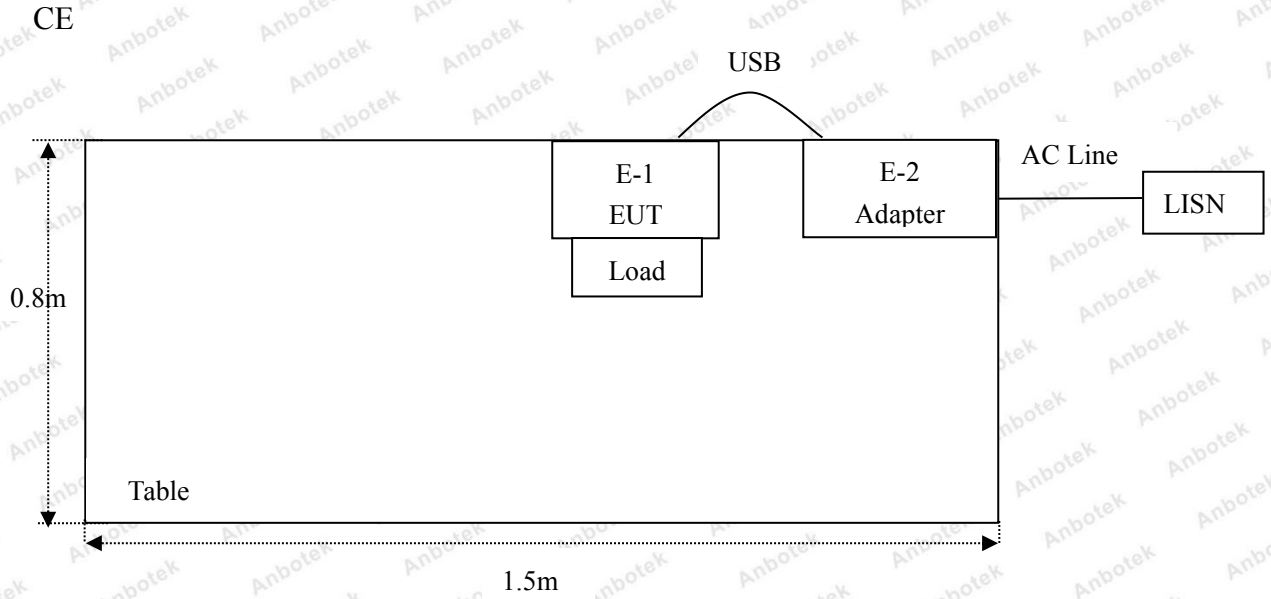
For Conducted Emission	
Final Test Mode	Description
Mode 4	Keeping TX+Charging mode

For Radiated Emission	
Final Test Mode	Description
Mode 1	CH01
Mode 2	CH10
Mode 3	CH20
Mode 4	Keeping TX+Charging mode

1.5. List of channels

Channel	Freq. (MHz)	Channel	Freq. (MHz)	Channel	Freq. (MHz)	Channel	Freq. (MHz)
1	0.110	6	0.135	11	0.160	16	0.185
2	0.115	7	0.140	12	0.165	17	0.190
3	0.120	8	0.145	13	0.170	18	0.195
4	0.125	9	0.150	14	0.175	19	0.200
5	0.130	10	0.155	15	0.180	20	0.205

1.6. Description Of Test Setup



1.7. Test Equipment List

Item	Equipment	Manufacturer	Model No.	Serial No.	Last Cal.	Cal. Interval
1.	L.I.S.N. Artificial Mains Network	Rohde & Schwarz	ENV216	100055	Nov. 17, 2017	1 Year
2.	EMI Test Receiver	Rohde & Schwarz	ESCI	100627	Nov. 17, 2017	1 Year
3.	RF Switching Unit	Compliance Direction	RSU-M2	38303	Nov. 17, 2017	1 Year
4.	Spectrum Analysis	Agilent	E4407B	US39390582	Nov. 17, 2017	1 Year
5.	Spectrum Analysis	Agilent	N9038A	MY53227295	Nov. 17, 2017	1 Year
6.	Preamplifier	SKET Electronic	BK1G18G30D	KD17503	Nov. 17, 2017	1 Year
7.	EMI Test Receiver	Rohde & Schwarz	ESCI	100627	Nov. 17, 2017	1 Year
8.	Double Ridged Horn Antenna	Instruments corporation	GTH-0118	351600	Nov. 20, 2017	1 Year
9.	Bilog Broadband Antenna	Schwarzbeck	VULB9163	VULB 9163-289	Nov. 20, 2017	1 Year
10.	Loop Antenna	Schwarzbeck	HFH2-Z2	100047	Nov. 17, 2017	1 Year
11.	Horn Antenna	Schwarzbeck	BBHA9170	9170-375	Nov. 17, 2017	1 Year
12.	Pre-amplifier	SONOMA	310N	186860	Nov. 17, 2017	1 Year
13.	EMI Test Software EZ-EMC	SHURPLE	N/A	N/A	N/A	N/A
14.	RF Test Control System	YIHENG	YH3000	2017430	Nov. 18, 2017	1 Year
15.	Power Sensor	DAER	RPR3006W	15I00041SN045	Nov. 17, 2017	1 Year
16.	Power Sensor	DAER	RPR3006W	15I00041SN046	Nov. 17, 2017	1 Year
17.	MXA Spectrum Analysis	Agilent	N9020A	MY51170037	Nov. 18, 2017	1 Year
18.	MXG RF Vector Signal Generator	Agilent	N5182A	MY48180656	Nov. 18, 2017	1 Year
19.	Signal Generator	Agilent	E4421B	MY41000743	Nov. 18, 2017	1 Year
20.	DC Power Supply	LW	TPR-6410D	349315	Nov. 01, 2017	1 Year
21.	Constant Temperature Humidity Chamber	Sertep	ZJ-HWHS80B	ZJ-17042804	Nov. 01, 2017	1 Year

1.8. Measurement Uncertainty

Radiation Uncertainty	:	Ur = 3.9 dB (Horizontal)
		Ur = 3.8 dB (Vertical)
Conduction Uncertainty	:	Uc = 3.4 dB

1.9. Description of Test Facility

The test facility is recognized, certified, or accredited by the following organizations:

FCC-Registration No.: 184111

Shenzhen Anbotek Compliance Laboratory Limited, EMC Laboratory has been registered and fully described in a report filed with the (FCC) Federal Communications Commission. The acceptance letter from the FCC is maintained in our files. Registration No. 184111, July 31, 2017.

ISED-Registration No.: 8058A-1

Shenzhen Anbotek Compliance Laboratory Limited, EMC Laboratory has been registered and fully described in a report filed with the (ISED) Innovation, Science and Economic Development Canada. The acceptance letter from the ISED is maintained in our files. Registration 8058A-1, June 13, 2016.

Test Location

All Emissions tests were performed at Shenzhen Anbotek Compliance Laboratory Limited. at 1/F, Building D, Sogood Science and Technology Park, Sanwei community, Hangcheng Street, Bao'an District, Shenzhen, Guangdong, China.518102

2. Summary of Test Results

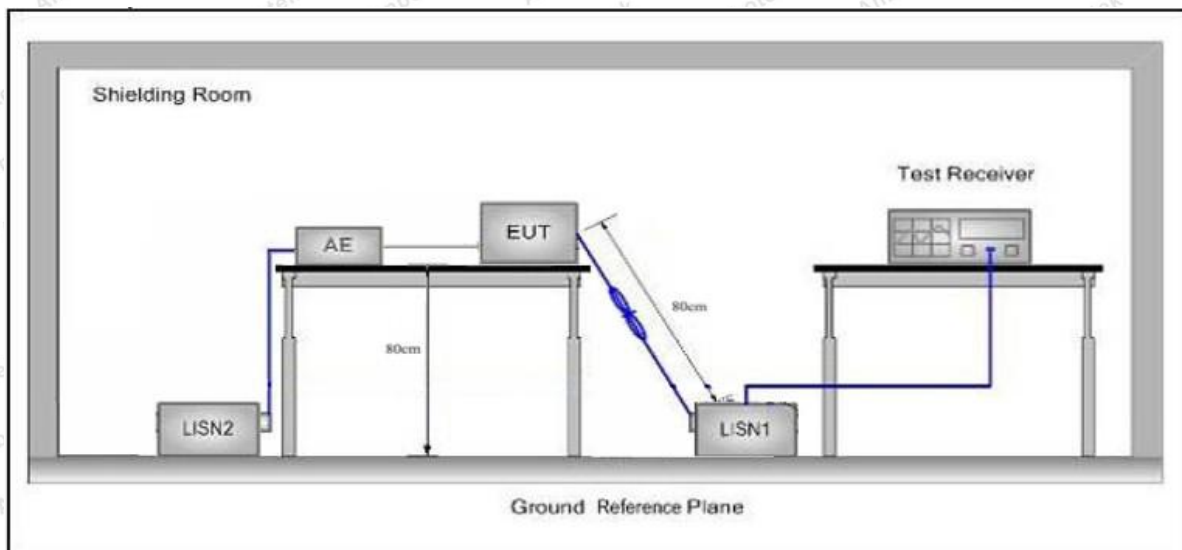
Standard Section	Test Item	Result
FCC Part 15, Paragraph 15.207	Conducted Emission Test	PASS
FCC Part 15, Paragraph 15.209(a)(f)	Spurious Emission	PASS

3. Conducted Emission Test

3.1. Test Standard and Limit

Test Standard	FCC Part15 Section 15.207		
Test Limit	Frequency	Maximum RF Line Voltage (dBuV)	
		Quasi-peak Level	Average Level
	150kHz~500kHz	66 ~ 56 *	56 ~ 46 *
	500kHz~5MHz	56	46
	5MHz~30MHz	60	50
Remark: (1) *Decreasing linearly with logarithm of the frequency. (2) The lower limit shall apply at the transition frequency.			

3.2. Test Setup



3.3. Test Procedure

The EUT system is connected to the power mains through a line impedance stabilization network (L.I.S.N.). This provides a 50ohm coupling impedance for the EUT system. Please refer the block diagram of the test setup and photographs. Both sides of AC line are checked to find out the maximum conducted emission. In order to find the maximum emission levels, the relative positions of equipment and all of the interface cables shall be changed according to FCC ANSI C63.10-2013 on Conducted Emission Measurement.

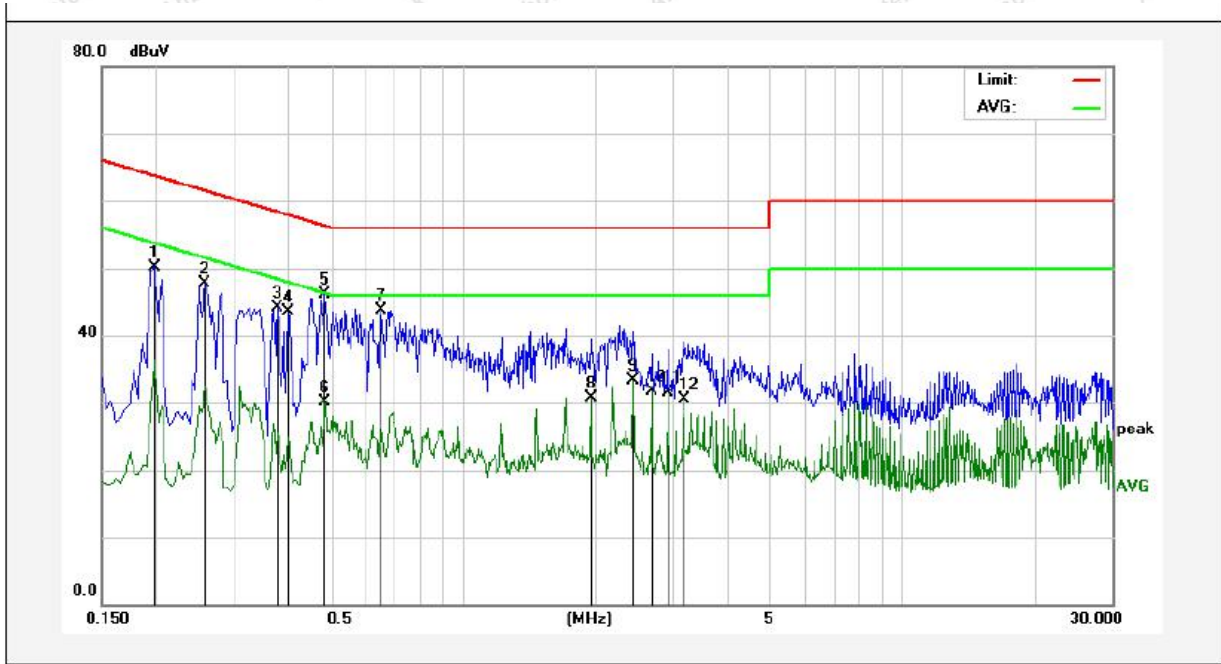
The bandwidth of test receiver (ESCI) set at 9kHz.
 The frequency range from 150kHz to 30MHz is checked.

3.4. Test Data

Please to see the following pages

Conducted Emission Test Data

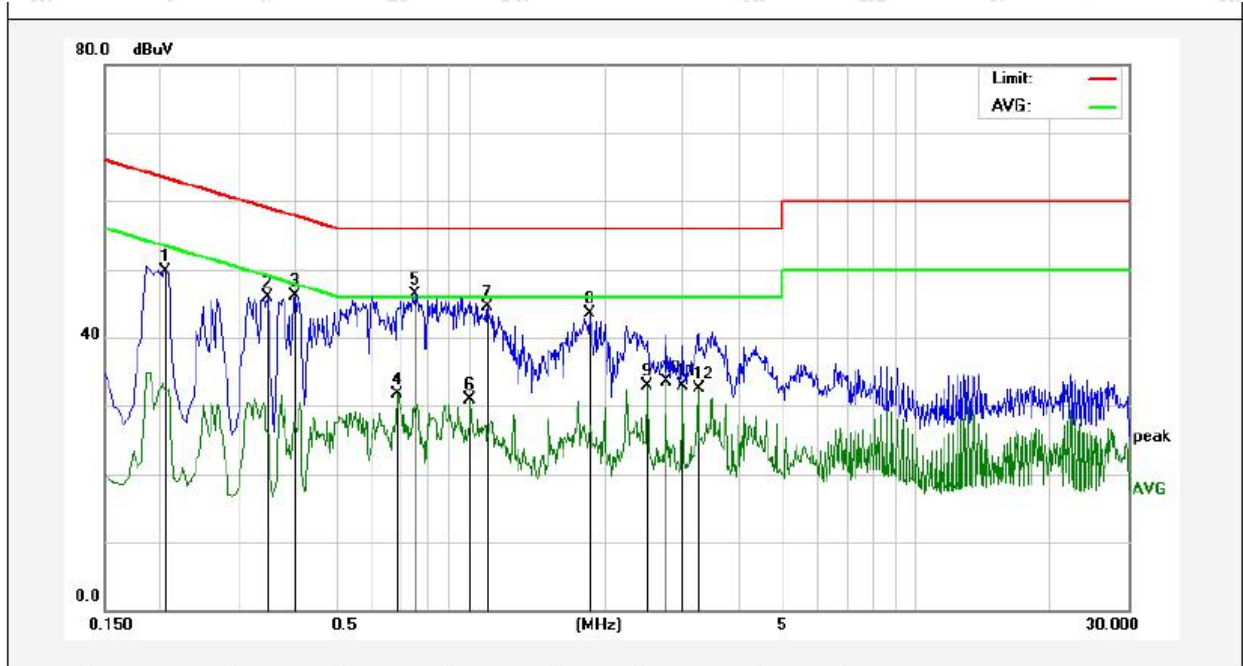
Test Site: 1# Shielded Room
 Operating Condition: Keeping TX+Charging mode
 Test Specification: AC 120V, 60Hz for adapter
 Comment: Live Line
 Tem.: 24.7°C Hum.: 51%



No.	Freq. (MHz)	Reading (dBuV)	Factor (dB)	Result (dBuV)	Limit dBuV	Over Limit (dB)	Detector	Remark
1	0.1980	30.30	19.90	50.20	63.69	-13.49	QP	
2	0.2580	27.79	19.89	47.68	61.49	-13.81	QP	
3	0.3780	24.15	19.93	44.08	58.32	-14.24	QP	
4	0.3980	23.61	19.93	43.54	57.89	-14.35	QP	
5	0.4860	26.05	19.97	46.02	56.24	-10.22	QP	
6	0.4860	10.20	19.97	30.17	46.24	-16.07	AVG	
7	0.6540	23.69	20.03	43.72	56.00	-12.28	QP	
8	1.9540	10.61	20.14	30.75	46.00	-15.25	AVG	
9	2.4420	13.20	20.15	33.35	46.00	-12.65	AVG	
10	2.6860	11.48	20.15	31.63	46.00	-14.37	AVG	
11	2.9300	11.38	20.16	31.54	46.00	-14.46	AVG	
12	3.1740	10.37	20.16	30.53	46.00	-15.47	AVG	

Conducted Emission Test Data

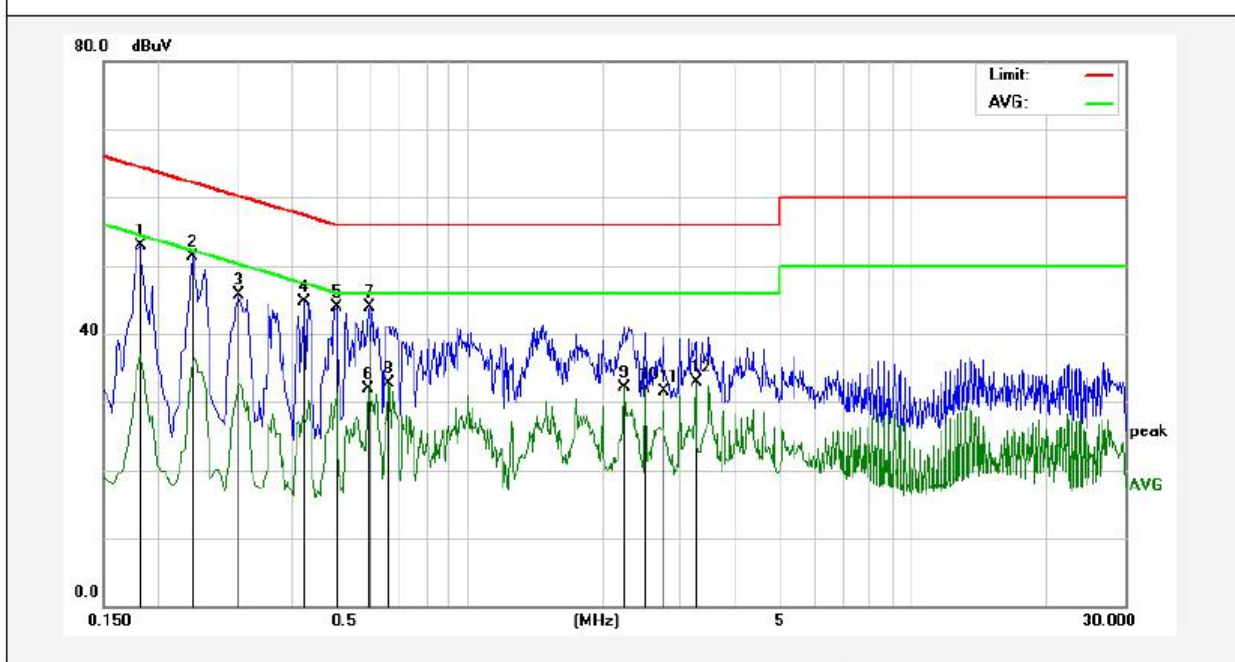
Test Site: 1# Shielded Room
 Operating Condition: Keeping TX+Charging mode
 Test Specification: AC 120V, 60Hz for adapter
 Comment: Neutral Line
 Tem.: 24.7°C Hum.: 51%



No.	Freq. (MHz)	Reading (dBuV)	Factor (dB)	Result (dBuV)	Limit dBuV	Over Limit (dB)	Detector	Remark
1	0.2060	29.86	19.90	49.76	63.36	-13.60	QP	
2	0.3500	26.03	19.91	45.94	58.96	-13.02	QP	
3	0.4020	26.12	19.94	46.06	57.81	-11.75	QP	
4	0.6860	11.58	20.04	31.62	46.00	-14.38	AVG	
5	0.7500	26.30	20.05	46.35	56.00	-9.65	QP	
6	0.9980	10.82	20.12	30.94	46.00	-15.06	AVG	
7	1.0900	24.32	20.12	44.44	56.00	-11.56	QP	
8	1.8580	23.28	20.14	43.42	56.00	-12.58	QP	
9	2.4940	12.84	20.15	32.99	46.00	-13.01	AVG	
10	2.7460	13.26	20.15	33.41	46.00	-12.59	AVG	
11	2.9940	12.79	20.16	32.95	46.00	-13.05	AVG	
12	3.2420	12.37	20.16	32.53	46.00	-13.47	AVG	

Conducted Emission Test Data

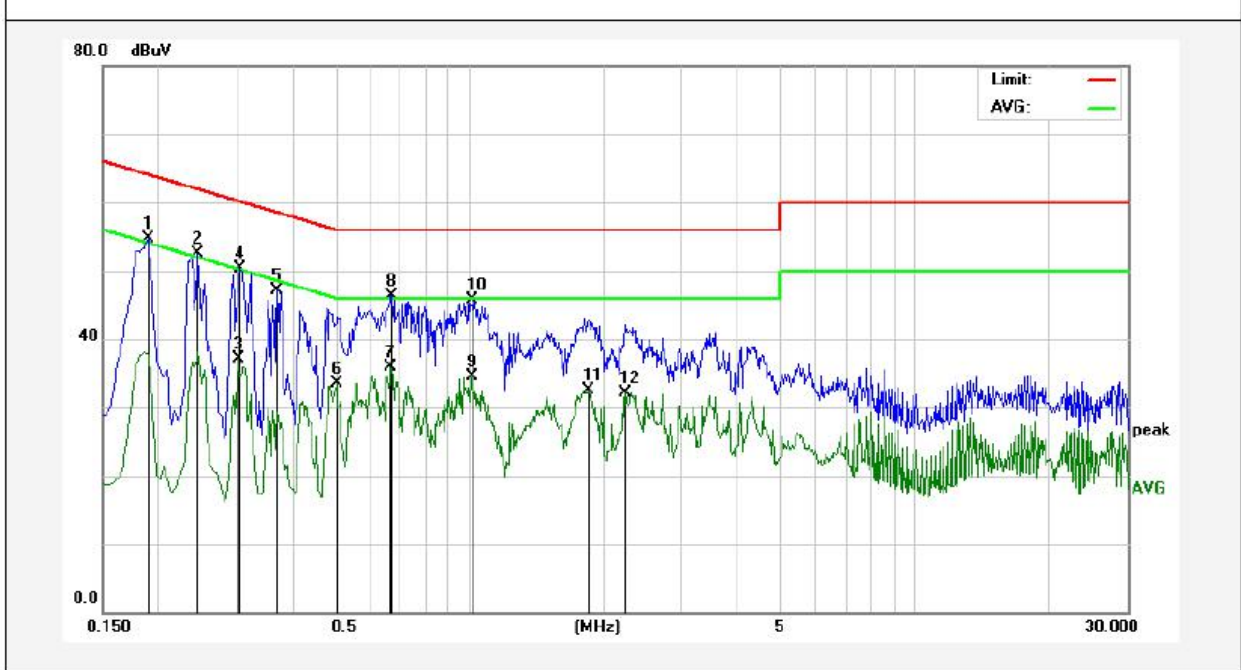
Test Site: 1# Shielded Room
 Operating Condition: Keeping TX+Charging mode
 Test Specification: AC 240V, 60Hz for adapter
 Comment: Live Line
 Tem.: 24.7°C Hum.: 51%



No.	Freq. (MHz)	Reading (dBuV)	Factor (dB)	Result (dBuV)	Limit dBuV	Over Limit (dB)	Detector	Remark
1	0.1819	32.91	19.90	52.81	64.39	-11.58	QP	
2	0.2380	31.49	19.89	51.38	62.16	-10.78	QP	
3	0.3020	25.78	19.89	45.67	60.19	-14.52	QP	
4	0.4260	24.75	19.95	44.70	57.33	-12.63	QP	
5	0.5020	23.91	19.98	43.89	56.00	-12.11	QP	
6	0.5940	11.82	20.01	31.83	46.00	-14.17	AVG	
7	0.5980	23.95	20.01	43.96	56.00	-12.04	QP	
8	0.6580	12.63	20.03	32.66	46.00	-13.34	AVG	
9	2.2460	11.93	20.14	32.07	46.00	-13.93	AVG	
10	2.4940	11.73	20.15	31.88	46.00	-14.12	AVG	
11	2.7420	11.28	20.15	31.43	46.00	-14.57	AVG	
12	3.2420	12.75	20.16	32.91	46.00	-13.09	AVG	

Conducted Emission Test Data

Test Site: 1# Shielded Room
 Operating Condition: Keeping TX+Charging mode
 Test Specification: AC 240V, 60Hz for adapter
 Comment: Neutral Line
 Tem.: 24.7°C Hum.: 51%



No.	Freq. (MHz)	Reading (dBuV)	Factor (dB)	Result (dBuV)	Limit dBuV	Over Limit (dB)	Detector	Remark
1	0.1900	34.74	19.90	54.64	64.03	-9.39	QP	
2	0.2460	32.69	19.89	52.58	61.89	-9.31	QP	
3	0.3020	17.28	19.89	37.17	50.19	-13.02	AVG	
4	0.3060	30.49	19.89	50.38	60.08	-9.70	QP	
5	0.3700	27.24	19.92	47.16	58.50	-11.34	QP	
6	0.5020	13.43	19.98	33.41	46.00	-12.59	AVG	
7	0.6660	15.83	20.03	35.86	46.00	-10.14	AVG	
8	0.6700	26.26	20.03	46.29	56.00	-9.71	QP	
9	1.0140	14.33	20.12	34.45	46.00	-11.55	AVG	
10	1.0180	25.56	20.12	45.68	56.00	-10.32	QP	
11	1.8500	12.39	20.14	32.53	46.00	-13.47	AVG	
12	2.2460	12.03	20.14	32.17	46.00	-13.83	AVG	

4. Radiation Spurious Emission and Band Edge

4.1. Test Standard and Limit

Test Standard	FCC Part15 C Section 15.209 and 15.205				
Test Limit	Frequency (MHz)	Field strength (microvolt/meter)	Limit (dBuV/m)	Remark	Measurement distance (m)
	0.009MHz~0.490MHz	2400/F(kHz)	-	-	300
	0.490MHz-1.705MHz	24000/F(kHz)	-	-	30
	1.705MHz-30MHz	30	-	-	30
	30MHz~88MHz	100	40.0	Quasi-peak	3
	88MHz~216MHz	150	43.5	Quasi-peak	3
	216MHz~960MHz	200	46.0	Quasi-peak	3
	960MHz~1000MHz	500	54.0	Quasi-peak	3
	Above 1000MHz	500	54.0	Average	3
		-	-	74.0	Peak

Remark:

(1)The lower limit shall apply at the transition frequency.

(2) 15.35(b), Unless otherwise specified, the limit on peak radio frequency emissions is 20dB above the maximum permitted average emission limit applicable to the equipment under test. This peak limit applies to the total peak emission level radiated by the device.

4.2. Test Setup

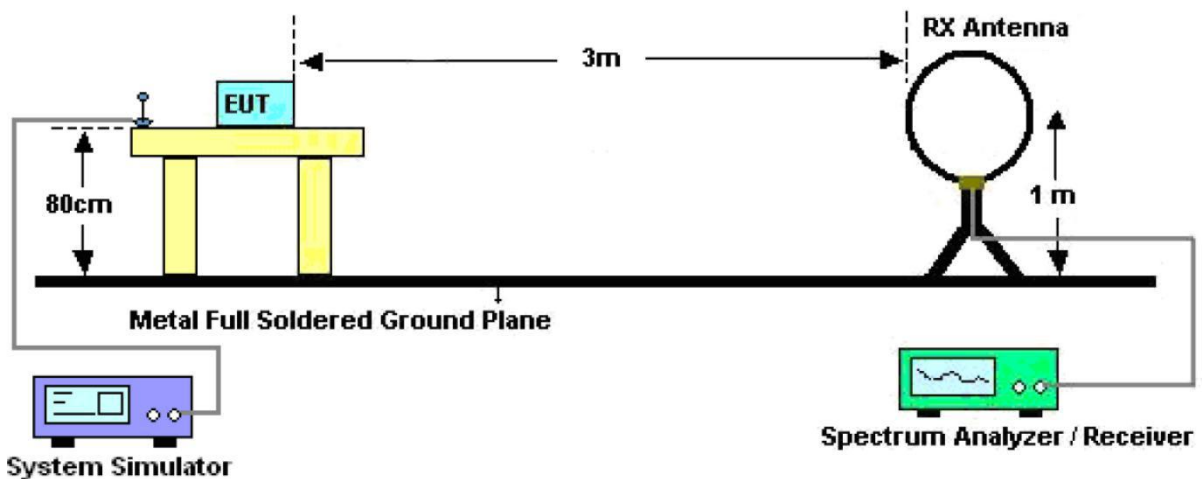


Figure 1. Below 30MHz

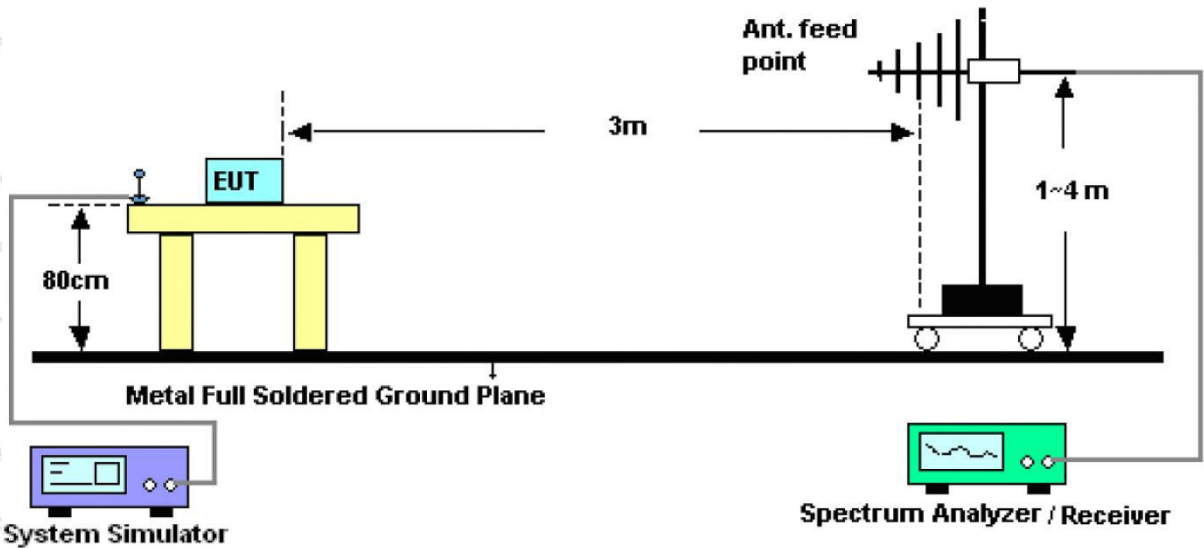


Figure 2. 30MHz to 1GHz

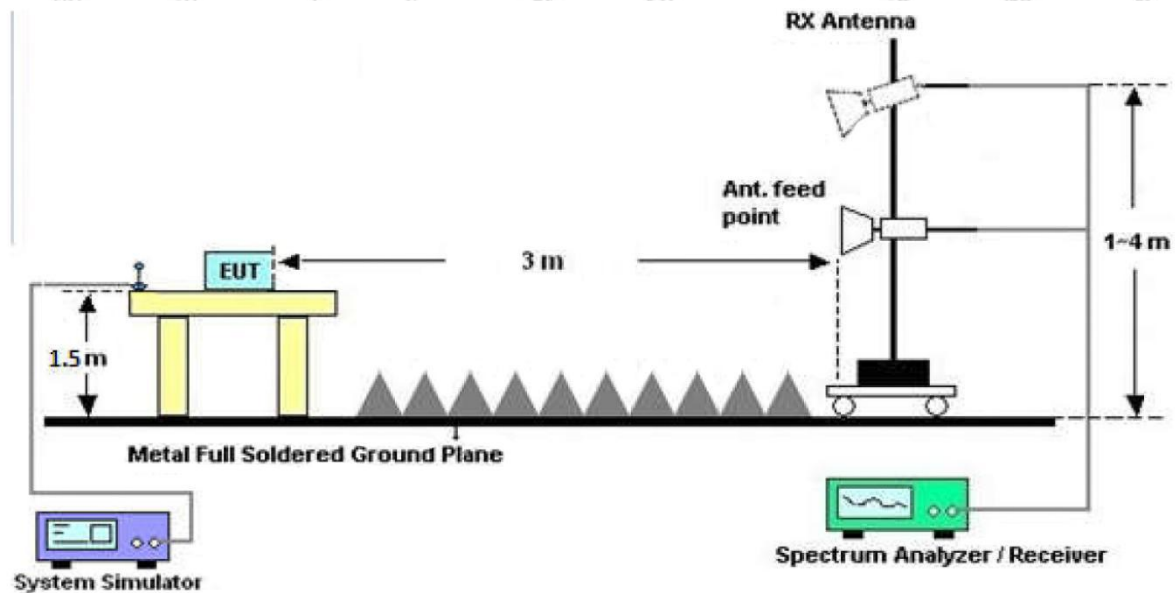


Figure 3. Above 1 GHz

4.3. Test Procedure

For below 1GHz: The EUT is placed on a turntable, which is 0.8m above the ground plane.

For above 1GHz: The EUT is placed on a turntable, which is 1.5m above the ground plane.

The turn table can rotate 360 degrees to determine the position of the maximum emission level. The EUT is set 3 meters away from the receiving antenna which is mounted on a antenna tower. The antenna can be moved up and down from 1 to 4 meters to find out the maximum emission level. Rotated the EUT through three orthogonal axes to determine the maximum emissions, both horizontal and vertical polarization of the antenna are set on test. The EUT is tested in 9*6*6 Chamber. The device is evaluated in xyz orientation.

For 9kHz to 150kHz, Set the spectrum analyzer as:

RBW = 200Hz, VBW =1kHz, Detector= Quasi-Peak, Trace mode= Max hold, Sweep- auto couple.

For 150kHz to 30MHz, Set the spectrum analyzer as:

RBW = 9KHz, VBW =30kHz, Detector= Quasi-Peak, Trace mode= Max hold, Sweep- auto couple.

For 30MHz to 1000MHz, Set the spectrum analyzer as:

RBW = 100kHz, VBW =300kHz, Detector= Quasi-Peak, Trace mode= Max hold, Sweep- auto couple.

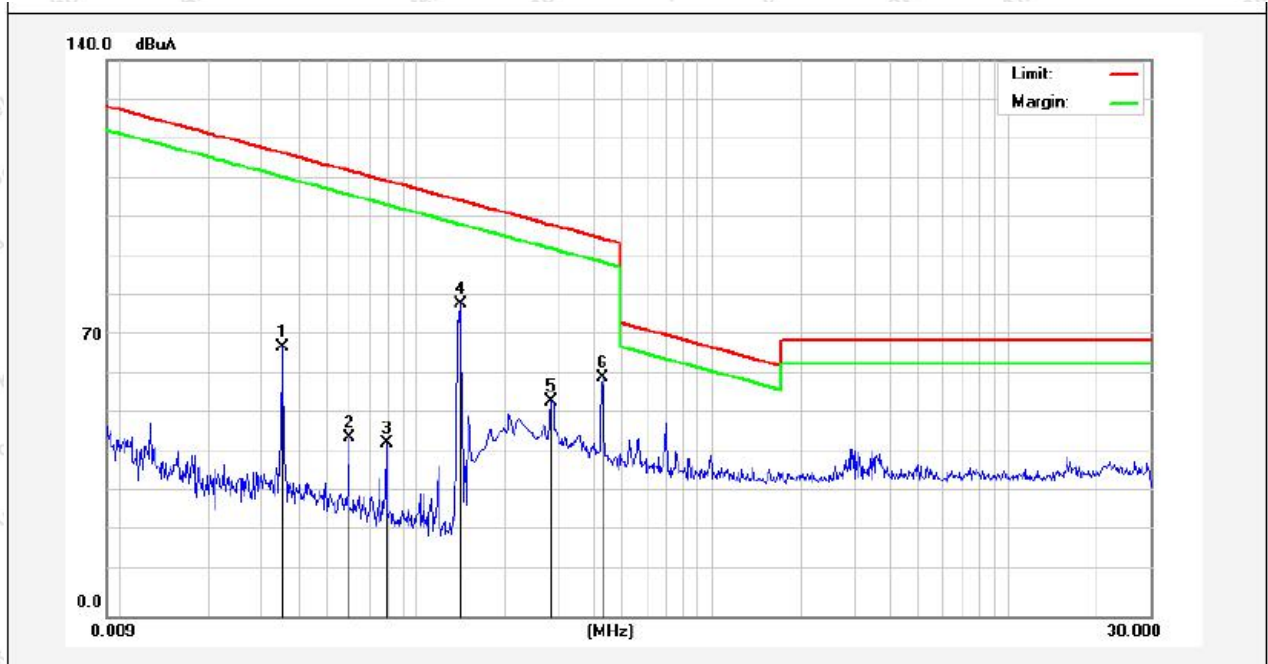
4.4. Test Data

PASS

Test Results

(Between 9KHz – 30MHz)

Job No.:	SZAWW180601001-01	Power Source:	AC 120V, 60Hz for adapter
Standard:	FCC PART15 C_3m	Temp.(C)/Hum.(%RH):	24.7(C)/51%RH
Test item:	Radiation Test	Distance:	3m
Test Mode:	Mode 4		

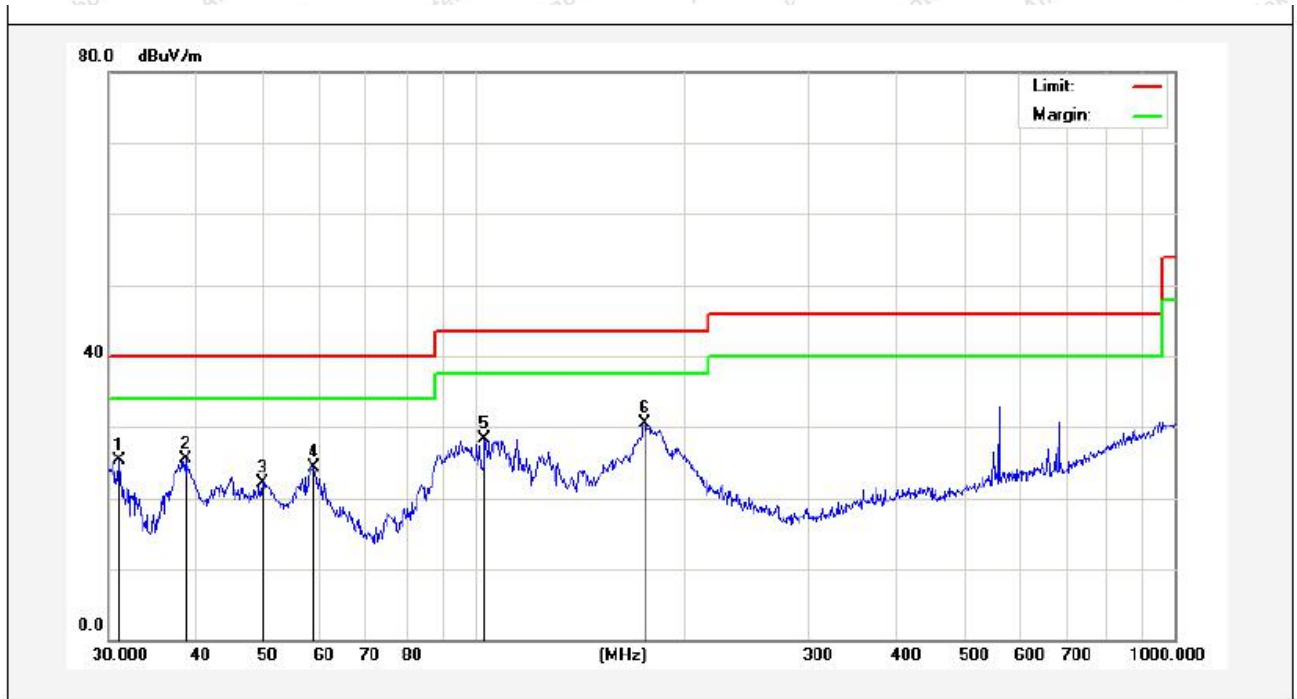


Frequency (MHz)	Read Level (dBuV)	Antenna Factor (dB/m)	Cable Loss (dB)	Preamp Factor (dB)	Level (dBuV/m)	Limit (dBuV/m)	Over Limit (dB)	Detector	degree
									(dgc)
0.0353	48.31	19.30	2.53	0	70.14	136.52	-66.38	Peak	127
0.0353	37.94	19.30	2.53	0	59.77	116.52	-56.75	AV	127
0.0593	33.27	19.32	2.54	0	55.13	132.04	-76.91	Peak	156
0.0593	23.09	19.32	2.54	0	44.95	112.04	-67.09	AV	156
0.0793	36.06	19.32	2.54	0	57.92	129.53	-71.61	Peak	68
0.0793	27.05	19.32	2.54	0	48.91	109.53	-60.62	AV	68
0.1366	54.49	19.32	2.54	0	76.35	124.83	-48.48	Peak	344
0.1366	45.77	19.32	2.54	0	67.63	104.83	-37.20	AV	344
0.2700	49.84	19.63	2.59	0	72.06	118.95	-46.89	Peak	267
0.2700	39.33	19.63	2.59	0	61.55	98.95	-37.40	AV	267
0.5260	37.70	19.63	2.59	0	59.92	73.18	-13.26	QP	195

Remark: According to FCC PART 15.209 (d), the emission limits for the frequency bands 9–90 kHz, 110–490 kHz and above 1000 MHz, Radiated emission limits in these three bands are based on measurements employing an average detector.

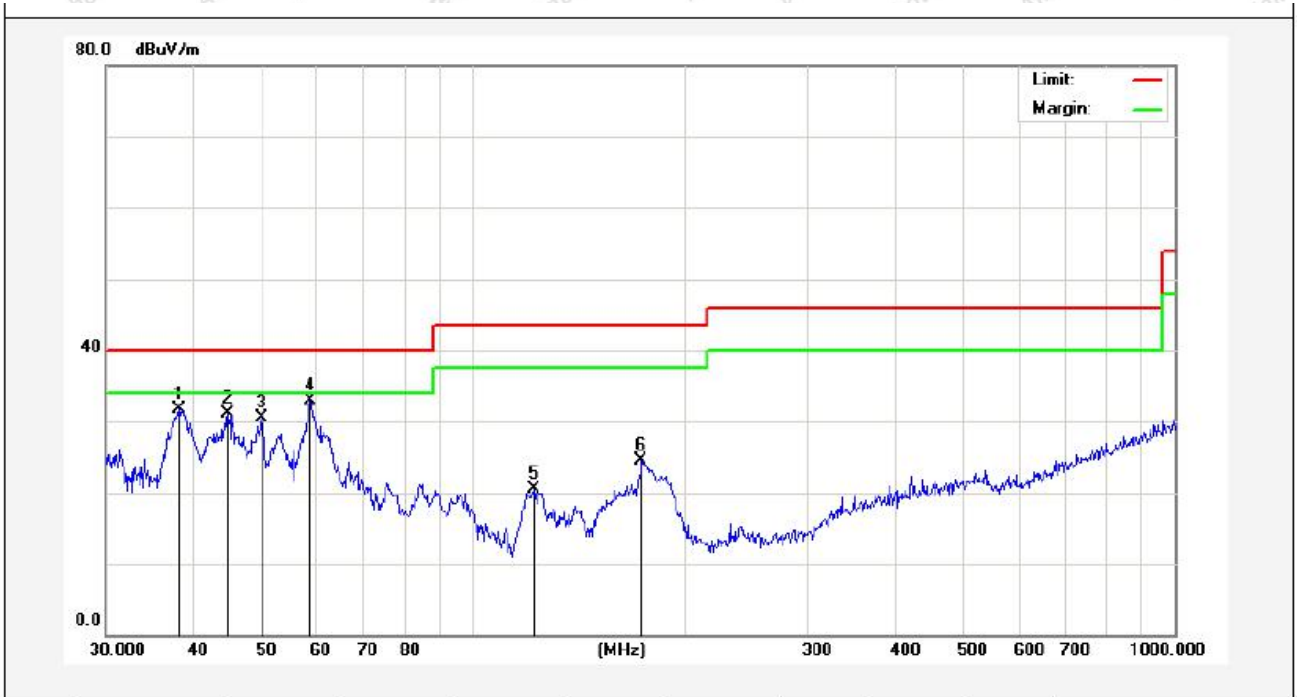
(Between 30MHz –1000 MHz)

Job No.:	SZAWW180601001-01	Polarization:	Horizontal
Standard:	FCC PART15 C_3m	Power Source:	AC 120V, 60Hz for adapter
Test item:	Radiation Test	Temp.(C)/Hum.(%RH):	23.3(C)/54%RH
Test Mode:	Mode 4	Distance:	3m



No.	Freq. (MHz)	Reading (dBuV/m)	Factor (dB/m)	Result (dBuV/m)	Limit (dBuV/)	Over Limit (dB)	Detector	Height (cm)	degree (deg)	Remark
1	31.0706	43.60	-18.24	25.36	40.00	-14.64	QP	300	12	
2	38.6160	40.53	-15.12	25.41	40.00	-14.59	QP	300	124	
3	49.8814	38.74	-16.54	22.20	40.00	-17.80	QP	300	215	
4	59.0251	41.26	-16.94	24.32	40.00	-15.68	QP	300	312	
5	103.4421	49.10	-20.71	28.39	43.50	-15.11	QP	300	145	
6	175.0368	50.21	-19.71	30.50	43.50	-13.00	QP	300	256	

Job No.:	SZAWW180601001-01	Polarization:	Vertical
Standard:	FCC PART15 C_3m	Power Source:	AC 120V, 60Hz for adapter
Test item:	Radiation Test	Temp.(C)/Hum.(%RH):	23.3(C)/54%RH
Test Mode:	Mode 4	Distance:	3m



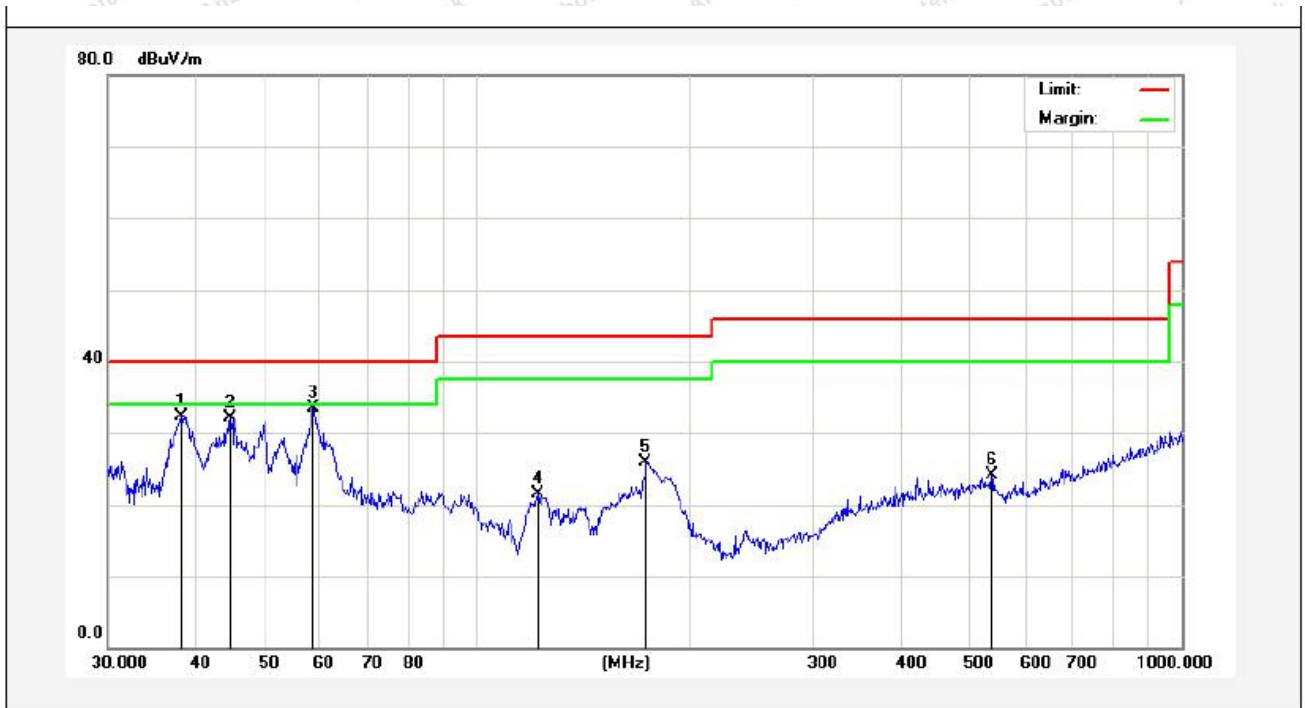
No.	Freq. (MHz)	Reading (dBuV/m)	Factor (dB/m)	Result (dBuV/m)	Limit (dBuV/)	Over Limit (dB)	Detector	Height (cm)	degree (deg)	Remark
1	38.0783	46.15	-14.42	31.73	40.00	-8.27	QP	300	124	
2	44.7433	45.30	-14.28	31.02	40.00	-8.98	QP	300	215	
3	50.0566	46.07	-15.57	30.50	40.00	-9.50	QP	300	254	
4	58.6126	48.87	-15.93	32.94	40.00	-7.06	QP	300	321	
5	122.4040	36.15	-15.68	20.47	43.50	-23.03	QP	300	341	
6	173.8135	40.72	-16.29	24.43	43.50	-19.07	QP	300	351	

Job No.:	SZAWW180601001-01	Polarization:	Horizontal
Standard:	FCC PART15 C_3m	Power Source:	AC 240V, 60Hz for adapter
Test item:	Radiation Test	Temp.(C)/Hum.(%RH):	23.3(C)/54%RH
Test Mode:	Mode 4	Distance:	3m



No.	Freq. (MHz)	Reading (dBUV/m)	Factor (dB/m)	Result (dBUV/m)	Limit (dBUV/)	Over Limit (dB)	Detector	Height (cm)	degree (deg)	Remark
1	38.6160	40.53	-15.12	25.41	40.00	-14.59	QP	300	124	
2	44.9004	40.72	-15.31	25.41	40.00	-14.59	QP	300	215	
3	59.0251	44.76	-16.94	27.82	40.00	-12.18	QP	300	312	
4	103.4419	50.60	-20.71	29.89	43.50	-13.61	QP	300	145	
5	175.0363	51.71	-19.71	32.00	43.50	-11.50	QP	300	215	
6	562.6624	45.46	-11.13	34.33	46.00	-11.67	QP	300	321	

Job No.:	SZAWW180601001-01	Polarization:	Vertical
Standard:	FCC PART15 C_3m	Power Source:	AC 240V, 60Hz for adapter
Test item:	Radiation Test	Temp.(C)/Hum.(%RH):	23.3(C)/54%RH
Test Mode:	Mode 4	Distance:	3m



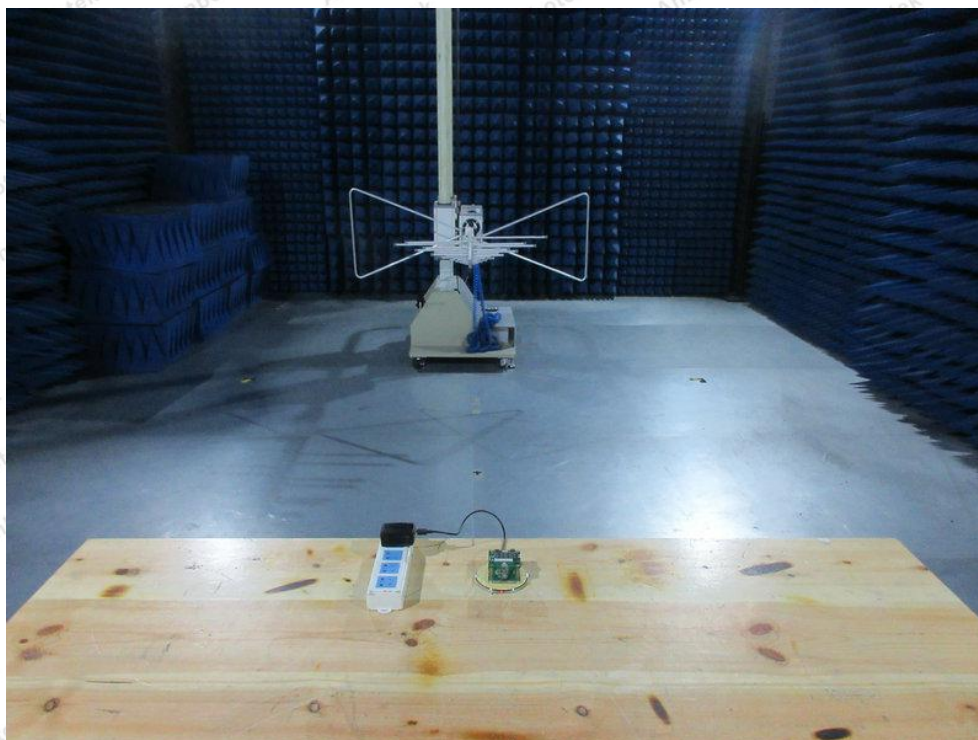
No.	Freq. (MHz)	Reading (dBuV/m)	Factor (dB/m)	Result (dBuV/m)	Limit (dBuV/)	Over Limit (dB)	Detector	Height (cm)	degree (deg)	Remark
1	38.0782	46.65	-14.42	32.23	40.00	-7.77	QP	300	12	
2	44.7433	46.30	-14.28	32.02	40.00	-7.98	QP	300	124	
3	58.6126	49.37	-15.93	33.44	40.00	-6.56	QP	300	215	
4	122.4038	37.15	-15.68	21.47	43.50	-22.03	QP	300	245	
5	173.8135	42.22	-16.29	25.93	43.50	-17.57	QP	300	312	
6	537.5891	34.38	-10.30	24.08	46.00	-21.92	QP	300	354	

APPENDIX I-- TEST SETUP PHOTOGRAPH

Photo of Conducted Emission Measurement

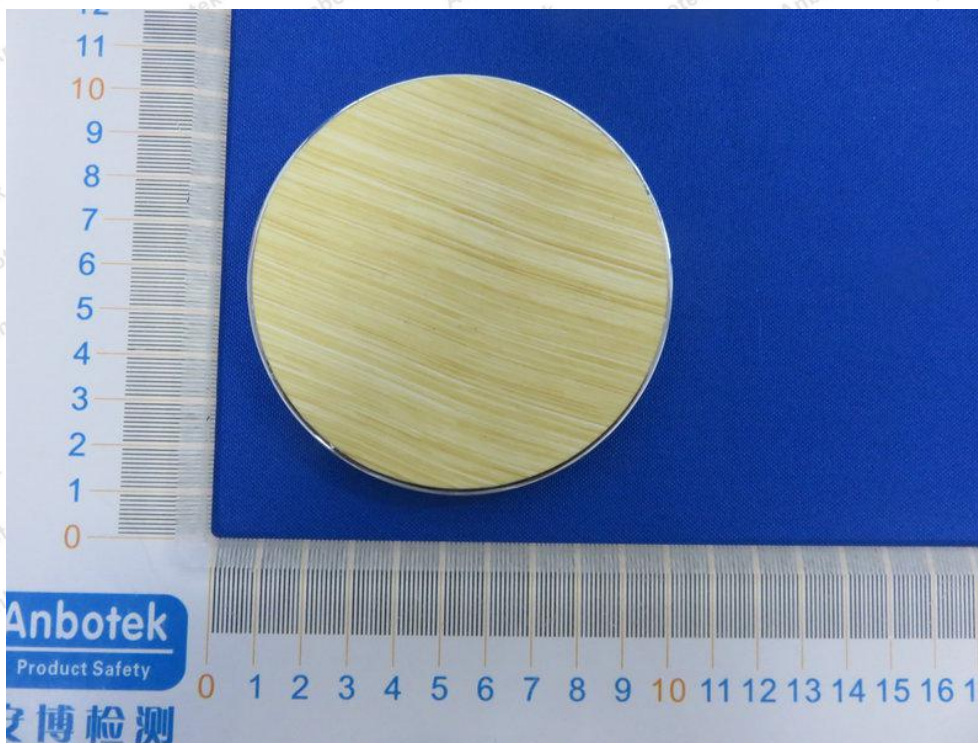


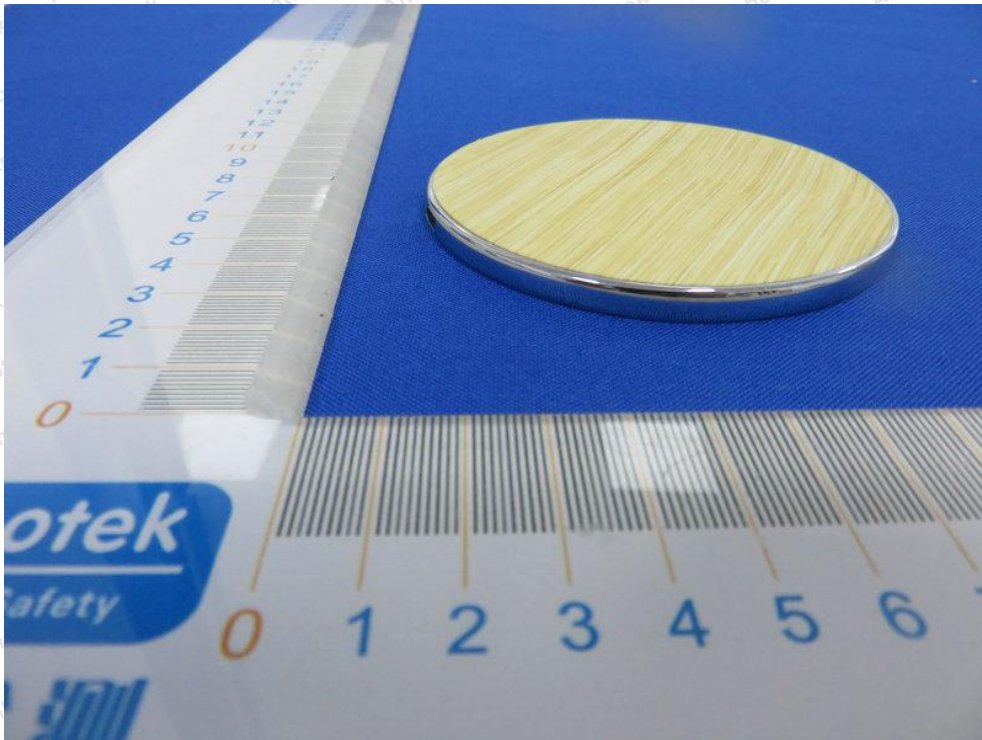
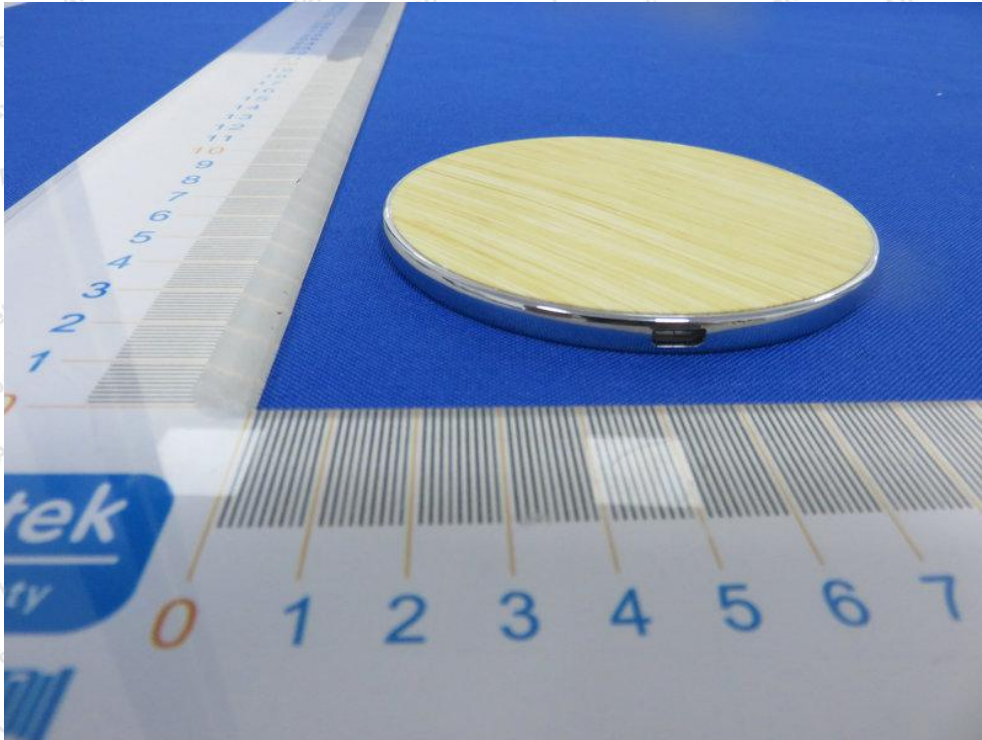
Photo of Radiation Emission Test

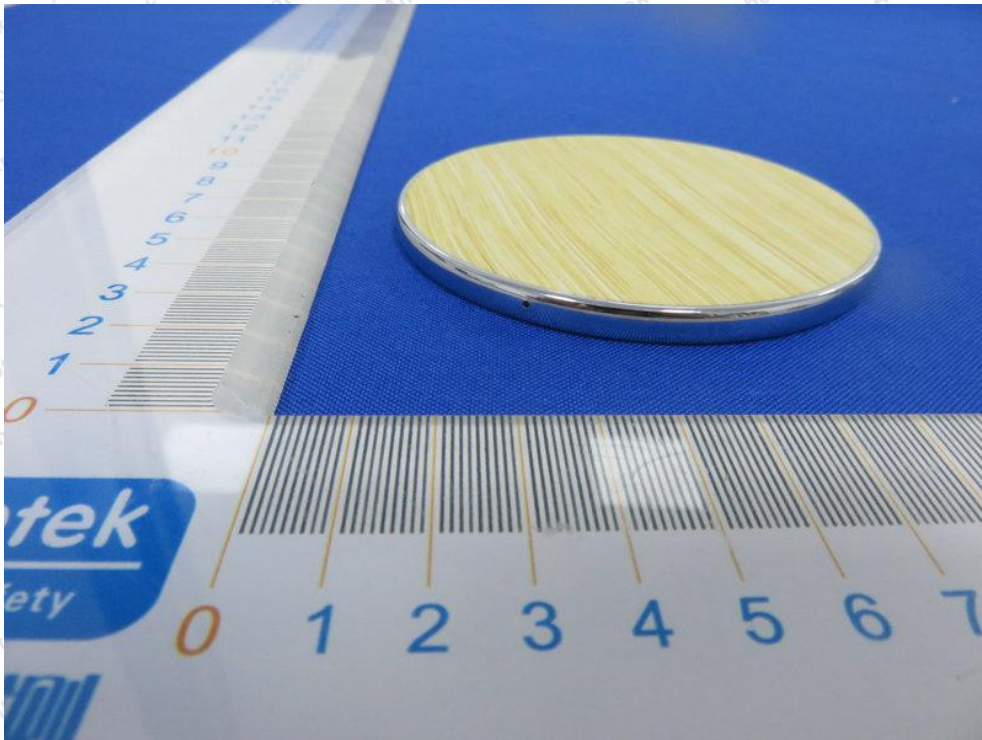
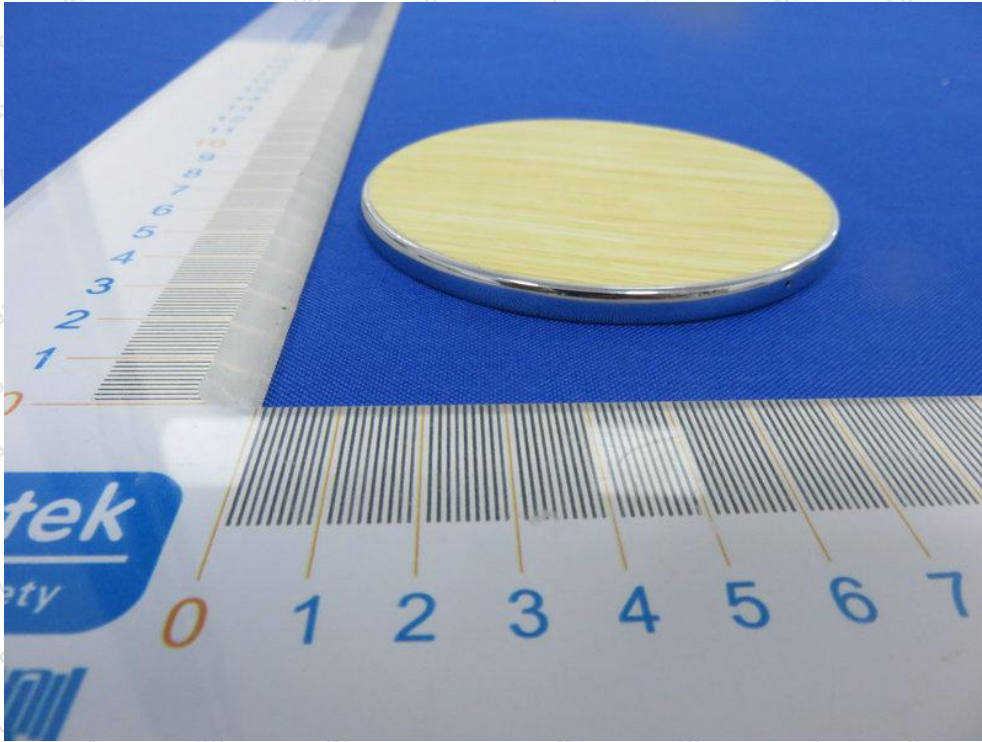




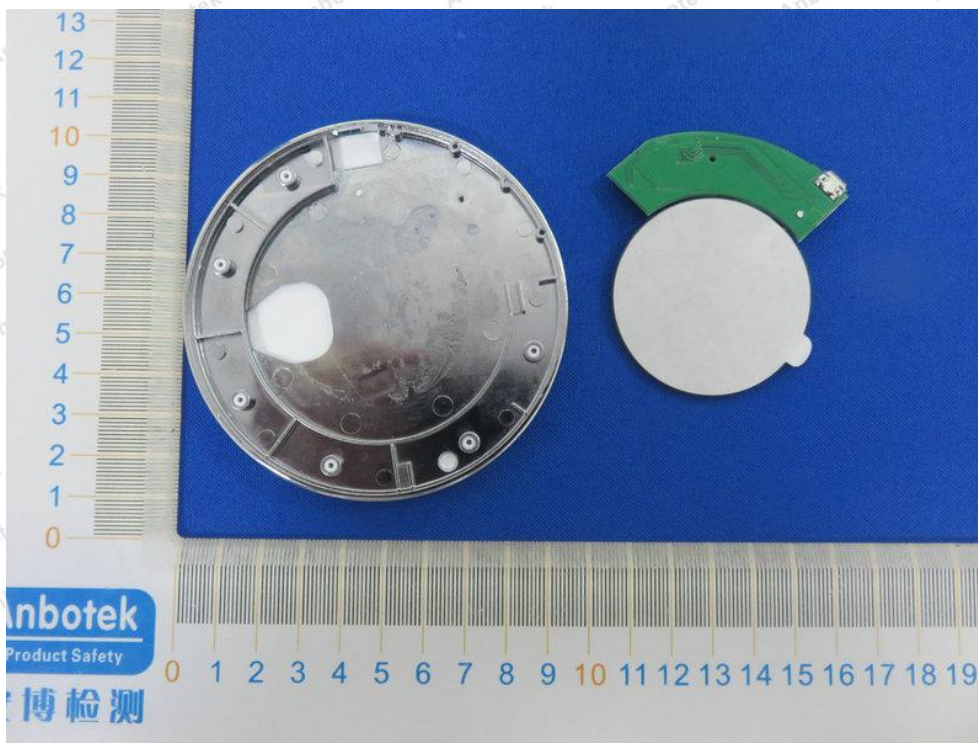
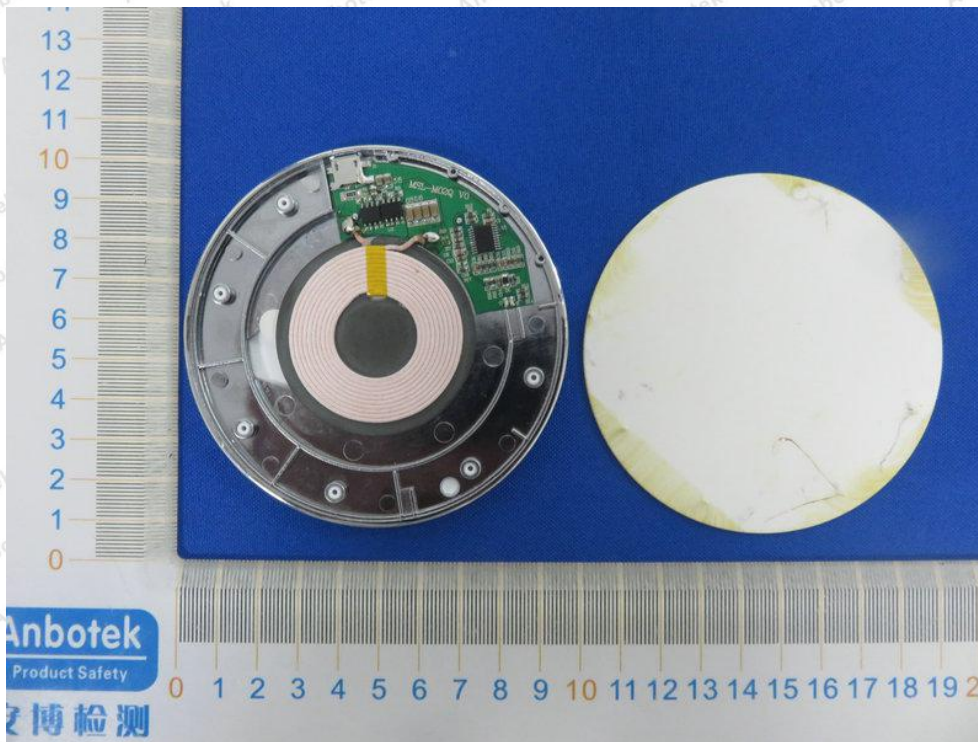
APPENDIX II -- EXTERNAL PHOTOGRAPH

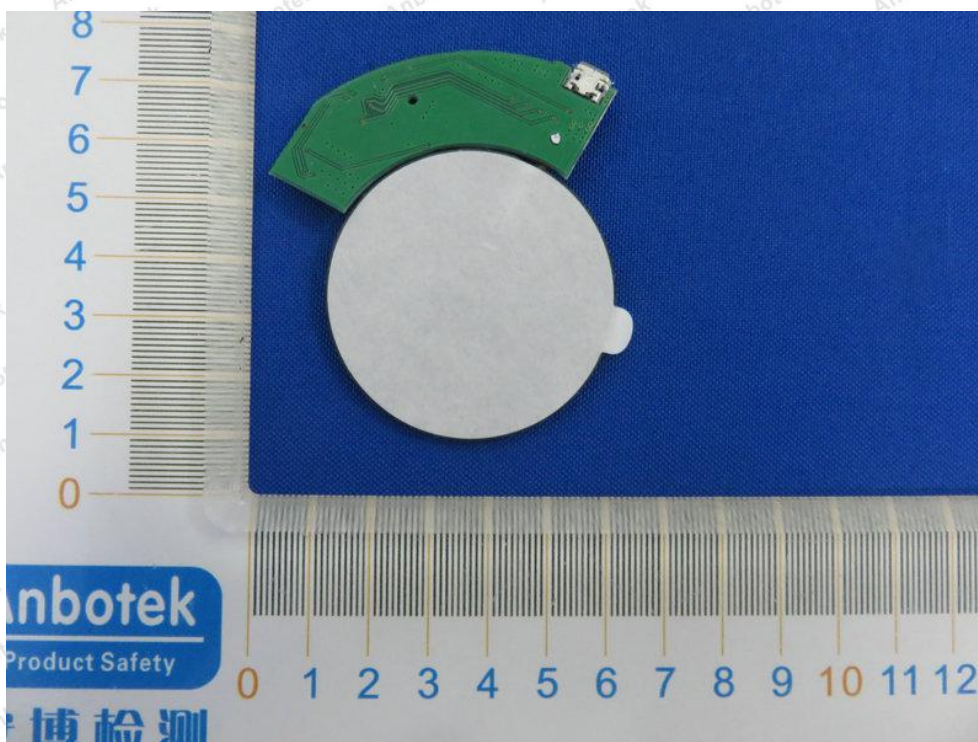
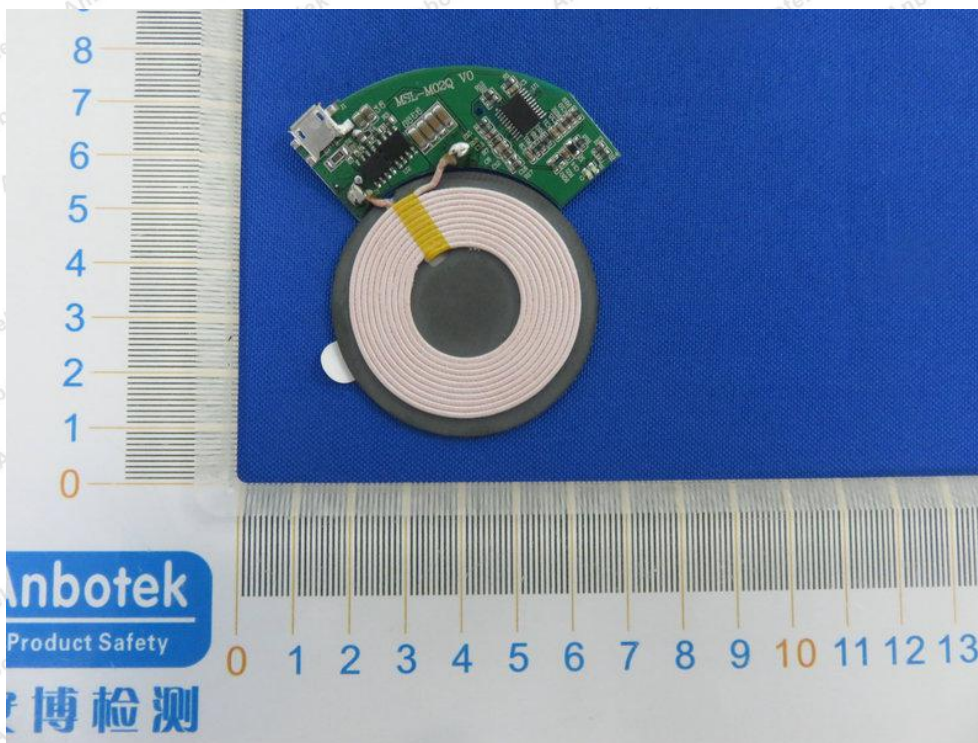


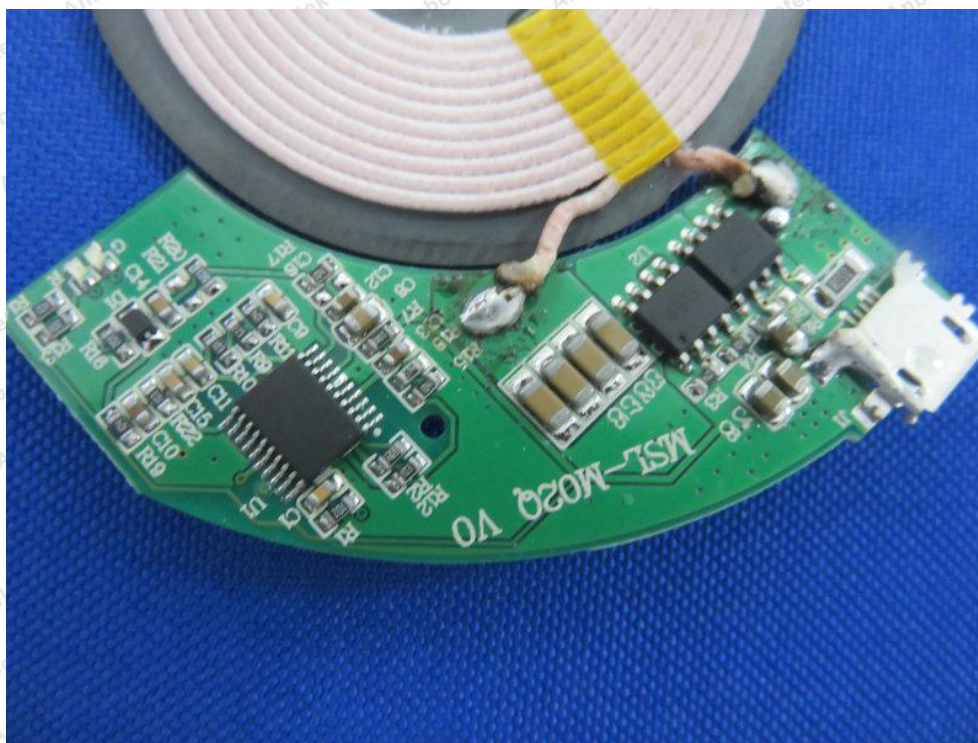




APPENDIX III -- INTERNAL PHOTOGRAPH







----- End of Report -----