

# RF EXPOSURE REPORT

## For

### FCC ID: 2AN8F-M2012Q

Product Name:	Bamboo 5000mAh Dual Port Power Bank with Wireless Charger Bamboo
Trademark:	N/A
Model Number:	M2012Q EPB-BM20
Prepared For :	ShenZhen Mossloo Industrial Co.,Ltd
Address :	Road One No.4, Science Industrial Park, Shangxue Village, Bantian Street, Longgang District, Shenzhen, China
Prepared By :	Shenzhen BCTC Testing Co., Ltd.
Address :	BCTC Building & 1-2F, East of B Building, Pengzhou Industrial, Fuyuan 1st Road, Qiaotou Community, Fuyong Street, Bao'an District, Shenzhen, China
Test Date:	Aug. 04, 2020 - Aug. 12, 2020
Date of Report :	Aug. 12, 2020
Report No.:	BCTC2008000392-1E

## TEST RESULT CERTIFICATION

**Applicant's name** ..... : Shenzhen Mossloo Industrial Co.,Ltd  
**Address** ..... : Road One No.4, Science Industrial Park, Shangxue Village,  
Bantian Street, Longgang District, Shenzhen, China  
**Manufacture's Name** ..... : Shenzhen Mossloo Industrial Co.,Ltd  
**Address** ..... : Road One No.4, Science Industrial Park, Shangxue Village,  
Bantian Street, Longgang District, Shenzhen, China

### Product description

**Product name** ..... : Bamboo 5000mAh Dual Port Power Bank with Wireless Charger  
Bamboo  
**Trademark** ..... : N/A  
**Model and/or type reference** : M2012Q  
**Serial Model** : EPB-BM20  
**Power Supply** : DC 3.7V From Battery  
Input: DC 5V/2A From adapter  
USB Output: 5V/2A(Max)  
Wireless Charging Output: 5W

**Standards** ..... : FCC CFR 47 part1, 1.1307(b), 1.1310

This device described above has been tested by BCTC, and the test results show that the equipment under And it is applicable only to the tested sample identified in the report.

This report shall not be reproduced except in full, without the written approval of BCTC, this document may be altered or revised by BCTC, personal only, and shall be noted in the revision of the document.

Prepared by(Engineer): Willem Wang

*Willem Wang*

Reviewer(Supervisor): Eric Yang

*Eric Yang*

Approved(Manager): Zero Zhou

*Zero Zhou*



<b>Table of Contents</b>	<b>Page</b>
1 . GENERAL INFORMATION	4
1.1. Independent Operation Mode	4
1.2. Test Supporting System	4
2 . LIST OF TEST AND MEASUREMENT INSTRUMENTS	5
2.1. For conducted emission at the mains terminals test	5
3. METHOD OF MEASUREMENT	6
3.1. Applicable Standard	6
3.2. Test Modes	6
3.3. MAXIMUM PERMISSIBLE EXPOSURE	6
4. TEST RESULT	7
4.1. Conducted Emission at the Mains Terminals Test	7
4.2. Equipment Approval Considerations:	8
4.3. E and H field Strength	9
5. Photographs of test set-up	10

## 1. GENERAL INFORMATION

### 1.1. Independent Operation Mode

The basic operation mode is:

#### 1.1.1. Charging

### 1.2. Test Supporting System

Adapter

Description : Adapter

Model No. : BCTC-002

Power Input : AC 100-240V~50/60Hz

Output: 5V $\overline{\text{---}}$  2A

DC Line : Unshielded, Detachable 1m

Mobile phone

Model No. : iphone8P

Model No. : iphone

## 2. LIST OF TEST AND MEASUREMENT INSTRUMENTS

### 2.1. For conducted emission at the mains terminals test

Equipment	Manufacturer	Model No.	Serial No.	Last Cal.	Next Cal.
Exposure Level Tester	Narda	ELT-400	N-0231	Jul. 15, 2020	Jul. 14, 2021
Magnetic field probe 100cm <sup>2</sup>	Narda	B-Field Probe 100cm <sup>2</sup>	M0675	Jul. 15, 2020	Jul. 14, 2021
843 Chamber	ETS	843	84301	Aug. 27, 2020	Aug. 26, 2023

### 3. METHOD OF MEASUREMENT

#### 3.1. Applicable Standard

According to §1.1307(b)(1), systems operating under the provisions of this section shall be operated in a manner that ensures that the public is not exposed to radio frequency energy level in excess of the Commission's guidelines. According to §1.1310 and §2.1093 RF exposure is calculated. According KDB680106 D01v03: RF Exposure Wireless Charging Apps v02.

#### 3.2. Test Modes

Test Modes	keeping TX+Charging mode
------------	--------------------------

#### 3.3. MAXIMUM PERMISSIBLE EXPOSURE

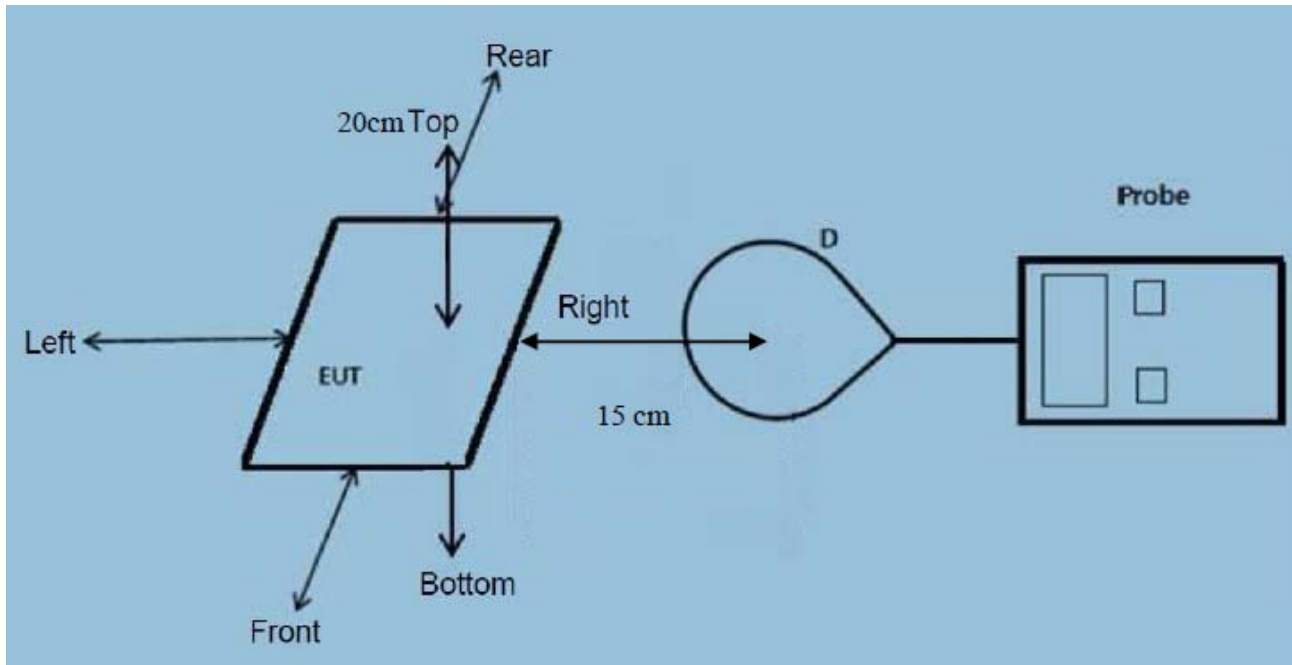
##### Limit of Maximum Permissible Exposure

Limits for Occupational / Controlled Exposure				
Frequency Range (MHz)	Electric Field Strength (E) (V/m)	Magnetic Field Strength (H) (A/m)	Power Density (S) (mW/ cm <sup>2</sup> )	Averaging Time  E  <sup>2</sup> , H  <sup>2</sup> or S (minutes)
0.3-3.0	614	1.63	(100)*	6
3.0-30	1842 / f	4.89 / f	(900 / f)*	6
30-300	61.4	0.163	1.0	6
300-1500			F/300	6
1500-100,000			5	6

Limits for General Population / Uncontrolled Exposure				
Frequency Range (MHz)	Electric Field Strength (E) (V/m)	Magnetic Field Strength (H) (A/m)	Power Density (S) (mW/ cm <sup>2</sup> )	Averaging Time  E  <sup>2</sup> , H  <sup>2</sup> or S (minutes)
0.3-1.34	614	1.63	(100)*	30
1.34-30	824/f	2.19/f	(180 / f)*	30
30-300	27.5	0.073	0.2	30
300-1500			F/1500	30
1500-100,000			1	30

## 4. TEST RESULT

### 4.1. Conducted Emission at the Mains Terminals Test



Note: Measurements should be made from all sides and the top of the primary/client pair, with the 15 cm measured from the center of the probe(s) to the edge of the device

#### Test Procedure:

- The RF exposure test was performed on 360 degree turn table in anechoic chamber.
- The measurement probe was placed at test distance (15cm) which is between the edge of the charger and the geometric centre of probe.
- The turn table was rotated 360d degree to search of highest strength.
- The highest emission level was recorded and compared with limit as soon as measurement of each points (A, B, C, D, E) were completed.
- The EUT were measured according to the dictates of KDB 680106D01v03.

## 4.2. Equipment Approval Considerations:

The EUT does comply with item 5(b) of KDB 680106 D01v03

1) Power transfer frequency is less than 1MHz

Yes, the device operate in the frequency range from 112-220KHz

2) Output power from each primary coil is less than or equal to 15 watts.

Yes, the maximum output power of the primary coil is 5W.

3) The transfer system includes only single primary and secondary coils. This includes charging systems that may have multiple primary coils and clients that able to detect and allow coupling onlybetween individual pair of coils.

Yes, the transfer system includes only single primary and secondary coils.

4) Client device is inserted in or placed directly in contact with the transmitter.

Yes, client device is placed directly in contact with the transmitter.

5) Mobile exposure conditions only (portable exposure conditions are not covered by this exclusion).

No, the EUT is a portable device, this item is not applicable.

6) The aggregate H-field strengths at 15 cm surrounding the device and 20 cm above the top surface from all simultaneous transmitting coils are demonstrated to be less than 50% of the MPE limit.

Yes, the EUT field strength levels are 10% x MPE limit.



### 4.3. E and H field Strength

(The worst data)

E-Field Strength at 15 cm surrounding the EUT and 20cm above the top surface of the EUT

Battery level	Frequency Range (MHz)	Test Position A	Test Position B	Test Position C	Test Position D	Test Position E	10% Limits Test (V/m)	Limits Test (V/m)
1%	0.112-0.220	0.52	0.58	0.52	0.46	0.48	61.4	614
50%	0.112-0.220	0.46	0.43	0.38	0.48	0.32	61.4	614
99%	0.112-0.220	0.32	0.37	0.34	0.32	0.23	61.4	614

H-Field Strength at 15 cm surrounding the EUT and 20cm above the top surface of the EUT

Battery level	Frequency Range (MHz)	Test Position A	Test Position B	Test Position C	Test Position D	Test Position E	10% Limits Test (A/m)	Limits Test (A/m)
1%	0.112-0.220	0.093	0.108	0.068	0.084	0.088	0.163	1.63
50%	0.112-0.220	0.088	0.092	0.062	0.072	0.082	0.163	1.63
99%	0.112-0.220	0.074	0.054	0.053	0.066	0.068	0.163	1.63

E-Field Strength at 0 cm surrounding the EUT and 0cm above the top surface of the EUT

Battery level	Frequency Range (MHz)	Test Position A	Test Position B	Test Position C	Test Position D	Test Position E	10% Limits Test (V/m)	Limits Test (V/m)
1%	0.112-0.220	0.61	0.67	0.70	0.59	0.57	61.4	614
50%	0.112-0.220	0.54	0.52	0.49	0.48	0.46	61.4	614
99%	0.112-0.220	0.41	0.39	0.38	0.40	0.37	61.4	614

H-Field Strength at 0 cm surrounding the EUT and 0cm above the top surface of the EUT

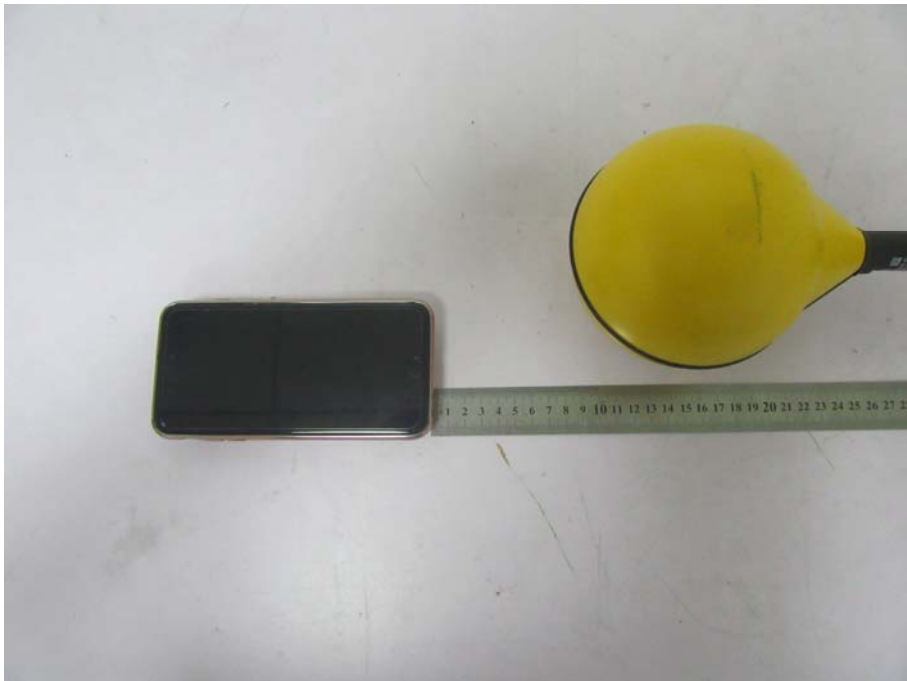
Battery level	Frequency Range (MHz)	Test Position A	Test Position B	Test Position C	Test Position D	Test Position E	10% Limits Test (A/m)	Limits Test (A/m)
1%	0.112-0.220	0.102	0.110	0.077	0.089	0.095	0.163	1.63
50%	0.112-0.220	0.097	0.104	0.080	0.084	0.090	0.163	1.63
99%	0.112-0.220	0.080	0.061	0.058	0.070	0.073	0.163	1.63

## 5. Photographs of test set-up

15cm



15cm



15cm



15cm



20cm



0cm



0cm



0cm



0cm



0cm



\*\*\*\*\* END OF REPORT \*\*\*\*\*