

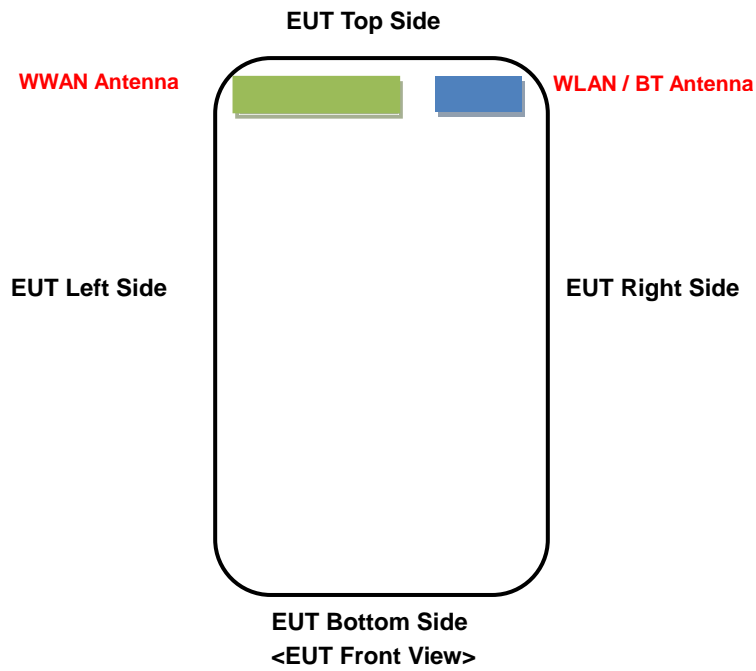
# FCC SAR Test Report

## <Photographs of EUT>



# FCC SAR Test Report

## <Antenna Location>



The separation distance for antenna to edge:

Antenna	overall diagonal	display diagonal	To Left Side (mm)	To Right Side (mm)	To Top Side (mm)	To Bottom Side (mm)
WWAN	154	138	4	38	5	135
WLAN / BT			48	5	5	135

# FCC SAR Test Report

## <Photographs of SAR Setup>



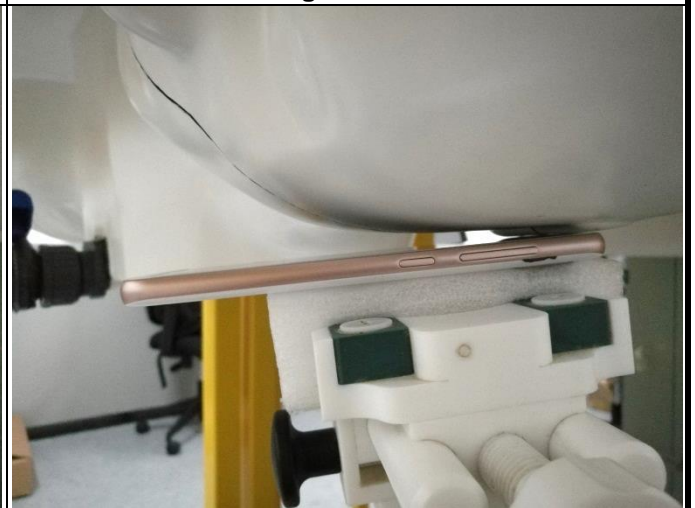
**Right Cheek**



**Right Tilted**



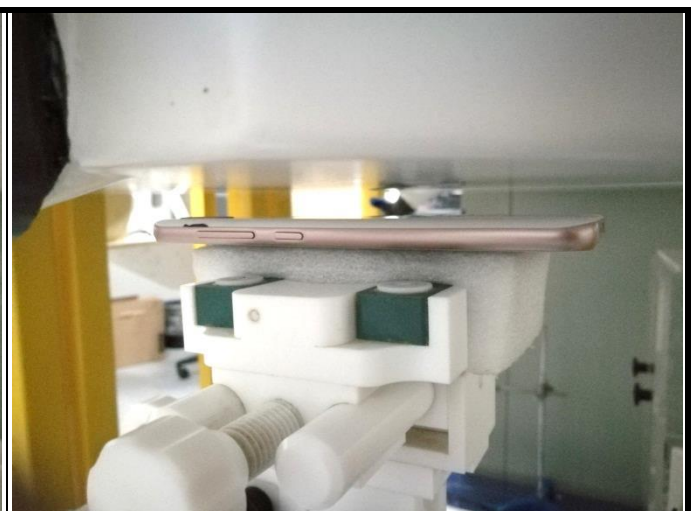
**Left Cheek**



**Left Tilted**



**Front Face of EUT with 1.0 cm Gap**

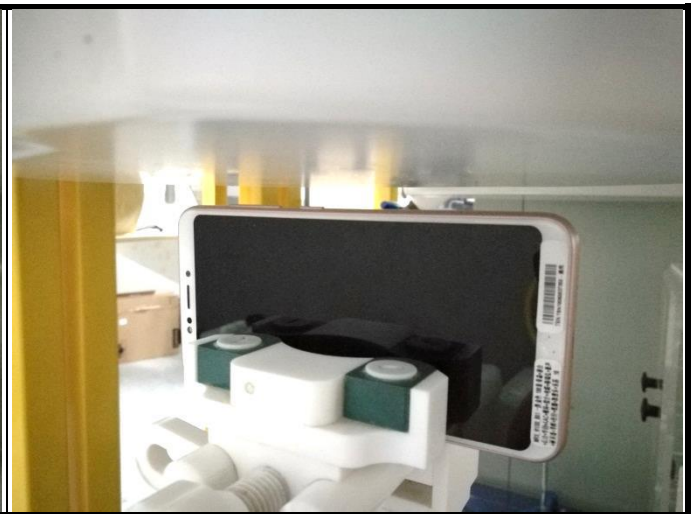


**Rear Face of EUT with 1.0 cm Gap**

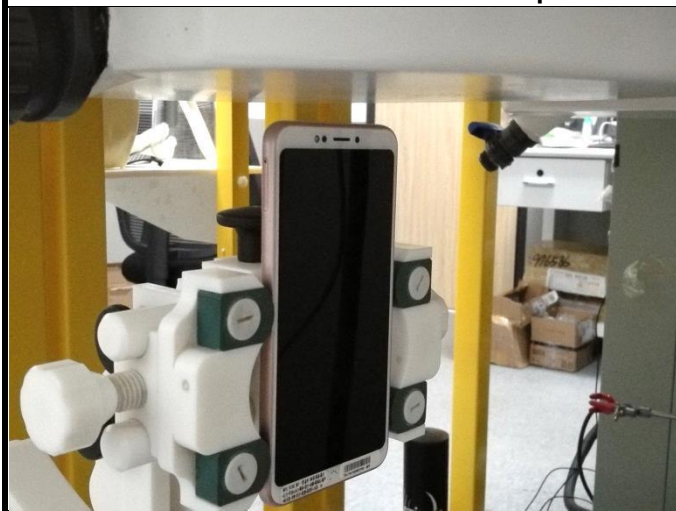
# FCC SAR Test Report



Left Side of EUT with 1.0 cm Gap



Right Side of EUT with 1.0 cm Gap



Top Side of EUT with 1.0 cm Gap

