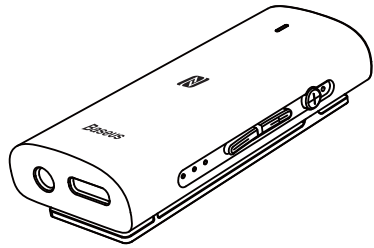


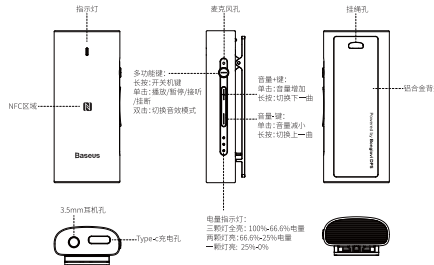
**Baseus倍思**

**BA03 沉浸式3D音效蓝牙耳机适配器 使用说明书**



\*使用产品前请仔细阅读本产品使用说明书,并妥善保管\*

**一、产品外观**



**二、产品参数**

品牌: Baseus (倍思)	通话时间: 1.5小时 (70%音量)
产品名称: 沉浸式3D音效蓝牙耳机适配器	听音乐时间: 6小时 (70%音量)
产品型号: BA03	额定功率: 4000mA/3.7V
材质: ABS+铝合金	输入: DC5V/550mA
颜色: 黑色/白色	额定充电电流: 100mA
蓝牙耳机: 5.0	充电时间: 1.5小时
蓝牙耳机委: Baseus BA03	充电接口: Type-C
通讯距离: 10米	适配机型: 具有蓝牙功能的播放设备
待机时间: 120小时	附品: 充电线*1pcs, 收纳袋*1pcs, 保修卡*1pcs, 说明书*1

**三、包装清单**



**四、操作方法**

1. 按键定义:

1) 多功能按键(MFB) 开机: 长按多功能按键约2秒 关机: 长按多功能按键约4秒 配对: 长按多功能按键约4秒 配对成功: 双击一下

2) 音量+键 单击: 音量增加 长按: 音量增加一倍

3) 音量-键 单击: 音量减小 长按: 音量减小一倍

4) NFC配对位置: 安装设备开启NFC功能且蓝牙已解锁, 轻触NFC检测区进行快速配对连接

2. 配对模式:
- 首次配对时, 请将蓝牙适配器和手机的距离控制在1M范围内。
  - 蓝牙耳机在关机状态下按“多功能键”4秒, 直至白灯闪烁, 此时蓝牙适配器已进入配对模式。
  - 打开手机蓝牙功能, 搜索蓝牙设备, 选择设备型号: Baseus BA03, 点击连接。
  - 输入配对密码“0000”(有些手机需要密码配对, 有些手机不需要密码配对)。
  - 配对失败请重复上述操作, 配对成功后自动进入配对。
  - 当用户需要切换蓝牙耳机设备连接时需要进入切换配对操作: 连续按态下, 同时长按音量+和“和音量-”键3秒并向前按压重新进入配对模式, 可配对连接其他设备。
3. 通话模式:
- 接听电话: 来电时, 短按“MFB”接听电话。
  - 挂断电话: 通话中, 短按“MFB”挂断电话。
  - 静音电话: 通话中, 长按“MFB”静音, 再按电话。
  - 忽略电话: 通话中, 长按“MFB”挂断, 使蓝牙耳机暂时关机, 再长按忽略即可。
  - 多方通话: 长按“MFB”键 3次(接听电话), 电话2来电时, 双击“MFB”键1次(接听电话), 接听电话2来电, 此时双击在电话与电话2之间切换接听电话, 长按挂断电话。

5. 常见问题解答:
- 为什么产品不能开机? 答: 没电, 请给耳机充电, 若没有电, 将导致产品不能开机。
  - 连接设备播放歌曲没有声音? 答: 检查播放设备与手机蓝牙适配器是否建立有效连接, 若播放设备未正常工作, 请重新连接, 同时调整手机蓝牙适配器音量到适合的音量等级。
  - 为什么蓝牙耳机不稳定, 手机与蓝牙适配器的距离多远? 答: 请保持手机与蓝牙耳机距离在10M以内, 一般来说, 如果手机与蓝牙适配器之间没有障碍物, 蓝牙耳机距离更好, 更稳定, 请保持有附近没有无线干扰设备或Wi-Fi设备干扰。
  - 蓝牙耳机连接成功的时候能配对吗? 答: 不可以, 耳机充电时不能使用。

**六、电子信息产品有毒有害物质声明**

部件名称	有毒有害物质元素					
	铅 (Pb)	镉 (Cd)	汞 (Hg)	六价铬 (Cr6+)	多溴联苯 (PBBs)	多溴联苯醚 (PBDEs)
PCB	X	0	0	0	0	0
电池	X	0	0	0	0	0
外壳	0	0	0	0	0	0
附件材料	X	0	0	0	0	0
附件	0	0	0	0	0	0

本表格按照SJ/T 11364的规定编制  
 X: 表示该有毒有害物质在该部件所有均质材料中的含量均大于GB/T 26572规定的限量要求以下。  
 0: 表示该有毒有害物质在该部件所有均质材料中的含量均小于GB/T 26572规定的限量要求。  
 本表格提供的信息是基于供应商提供的数据及符合RoHS指令要求的检测结果, 在当前技术水平下, 所有含有有害物质或元素的使用限制列于最底线, 但符合欧盟RoHS指令的要求, 环保使用5年。

**七、产品安全信息**

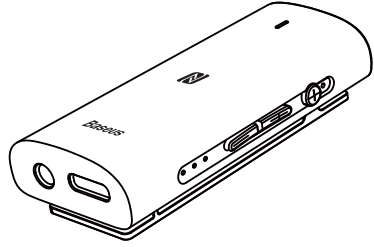
- 在使用本产品前请仔细阅读本产品的指示和警告, 不规范使用将会给产品带来损害。
- 高音量可能会影响听力, 为了交通安全, 切勿在驾车或骑行时使用耳机。
  - 儿童应在成人监督下使用本产品, 本产品并非玩具。
  - 本产品为锂电池, 请勿随意丢弃, 火灾或爆炸危险, 请将锂电池放入指定的回收桶中, 输入电压不能超过5V, 充电过程中, 当出现过热, 过流或过压现象, 自动停止充电以避免危险, 当设备恢复正常状态时, 充电继续。
  - 请定期清洁耳机充电(建议每周一次), 可保持长久使用寿命。

温馨提示:  
 \* 产品存储不当, 容易导致产品本身质量或造成危及人身财产安全。  
 \* 如因消费者使用产品不当或使用不当导致的人身及财产损害自行承担相应后果, 本公司不承担相应法律责任。  
 品牌名: Baseus (倍思)  
 品牌商: 深圳市奇创网络科技有限公司  
 地址: 深圳市福田区田面街道华强北华强智能园3楼608室  
 执行标准: Q/SSCZ 043-2019  
 电话: +86-755-82433003  
 网址: www.baseus.com  
 创意设计 | 中国制造



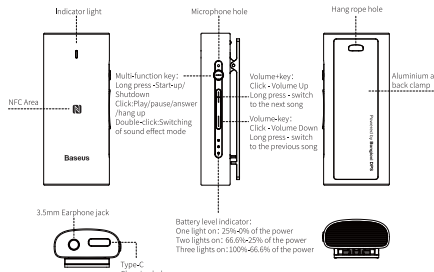
**Baseus**

**BA03 Immersive Virtual 3D Bluetooth Receiver Instruction**



Please read this instructions completely and keep it properly

**1. Product appearance**



**2. Product Parameter**

Brand: Baseus	Call time: 5 hours (70% of the volume)
Product Name: Immersive Virtual 3D Wireless Receiver	Music time: 6 hours (70% of the volume)
Model: BA03	Battery capacity: 4000mAh/3.7V
Material: ABS+ Aluminum alloy	Input: DC5V/550mA
Color: Black/White	Rated current consumption: 100mA
Version: V5.0	Charging time: 1 hours
Device name: Baseus BA03	Charge interface: Type-C
Communication distance: 10 meters	Suitable for: Compatible with all wireless devices
Standby time: 120 hours	Accessories: Charging cable*1pcs, Audio cable*1pcs, User manual*1pcs, Warranty card*1pcs, Storage bag*1pcs

**3. Packing list**



**4. Operating method**

1. Key Definition:

1) Multi-function button (MFB): Start/Up: Long press the multi-function button for about 2 seconds. Shutdown: Long press the multi-function button for about 4 seconds. Play/Pause/Answer/Hang up: Short press the multi-function button for 1 second. Switching of sound effect mode: double-click the multi-function button

2) Volume + key: Click: Volume Up Long press for 2 seconds: switch to the next song

3) Volume - key: Click: Volume Down Long press: switch to the previous song

4) NFC pairing connection: NFC is turned on for Android device and the screen is unlocked. Tap NFC detection area for quick pairing connection

- Pairing Mode:
- When pairing Bluetooth for the first time, please make sure the distance between Bluetooth adapter and mobile phone within 3M.
  - When the Bluetooth adapter is turned off, long press the "multi-function button" for 4 seconds until the white light flashes quickly. At this time, the Bluetooth adapter has entered the pairing mode.
  - Turn on the Bluetooth of the mobile phone, search for Bluetooth devices, and select the device model: Baseus BA03, and click Connect.
  - Enter the pairing password "0000" (some mobile phones require password for pairing, while some not).
  - Please repeat the above operation in case the pairing fails and the white light will flash slowly after the pairing succeeds.
  - When the user wants to switch the Bluetooth device connection, he or she needs to switch pairing: when the device is connected, long press both the volume "+" and volume "-" keys for 3s at the same time to disconnect the current connection and re-enter the pairing mode, so that other devices can be paired and connected.
3. Talk mode:
- Answer a call: When there is an incoming call, press once the "MFB" to answer the call.
  - Hang up a call: When calling, press once the "MFB" to hang up the call.
  - Reject a call: When there is an incoming call, Press and hold the "MFB" for 2s to reject the call.
  - Redial Audio switch: During voice call, press and hold MFB switch for 1S from headphone to smartphone, do the same switch back to headphone.
  - Multiple Call: When there is an incoming call, press once the "MFB" to answer the call. When the other call 2) is coming, press once to answer call 2, double click "MFB" key to switch between call 1 and call 2. Short press to hang up call 1 and long press to hang up call 2.

5. FAQs:
- Why product cannot be turned on? Answer: When using your product at the first time, please check and make sure the product battery is fully charged. If the battery runs out of power, your earphone may not be turned on.
  - The earphone is silent during playback? Answer: Check for a valid connection between the mobile phone/wireless adapter\* and your earphone. If the device is not properly connected, please reconnect it. Meanwhile, please also adjust the volume on mobile phone or your earphone to a proper level.

- Why the wireless connection is unstable, and how far should my mobile phone be kept from wireless adapter? Answer: Please make sure that your mobile phone is kept within 10m effective distance from your wireless adapter. Usually if there is no obstruction between your mobile phone and your wireless adapter, then the connection distance can be better. Please make sure that there is not any interference from wireless devices and Wi-Fi devices nearby.
- May I use my wireless adapter while it is being charged? Answer: No, you can not use your wireless adapter while it is being charged.

**6. Declaration on Toxic or hazardous substances and elements contained in electronic products**

Part	Toxic or hazardous substances and elements					
	Lead (Pb)	Cadmium (Cd)	Mercury (Hg)	Hexavalent Chromium (Cr6+)	Polybrominated Biphenyls (PBBs)	Polybrominated Diphenyl Ethers (PBDEs)
PCB	X	0	0	0	0	0
Battery	X	0	0	0	0	0
Housing	0	0	0	0	0	0
Cable	X	0	0	0	0	0
Accessories	0	0	0	0	0	0

This form is prepared in accordance with the provisions of SJ/T 11364  
 X: Indicates that contents of the toxic and hazardous substances in all homogeneous materials are below the limit requirements specified by GB/T 26572 standard.  
 0: Indicates that contents of the toxic and hazardous substances exceed the limit requirements specified in GB/T 26572 standard in at least one homogeneous material of the part.  
 The information provided in this form is based on the data provided by the supplier and in line with the detection result of RoHS environmental requirements. At the current level of technology, use of all toxic and hazardous substances or elements is controlled to the bottom line, but minimally of EU RoHS directive is followed. Environmental protection limit lasts 5 years.

**7. Product Safety Information**

- Please read all instructions and warnings before using this product. Improper use of the product will cause damage to the product.
- High volume may affect hearing. For traffic safety, do not use headphones while driving or cycling.
  - Supervise children when using the equipment. The product is not a toy.
  - The battery is included in the product. Please do not expose to sunlight, fire or similar overheating. The input voltage of the charger port should not exceed 5V. During charging, when overvoltage, overcurrent or overtemperature occurs, the charging will stop automatically to avoid injury. When returning to normal state, charging will continue.
  - Please charge your headset regularly (suggested once a month) to maintain its long life.

Tips:  
 \* Improper use of the product may easily cause damage to the product itself or may endanger the safety of people and property.  
 \* If the personal and property damage caused by improper use or warning of the product in violation of the product instruction, consumer will bear all consequences. Our company will not have any legal responsibility.

Shenzhen Times Innovation Technology Co., Ltd.  
 Address: Room 03, 6/F, Building 3, WML EAD, Fada Road, Bantian Street, Longgang District, Shenzhen, China  
 TEL: +86-755-82433003 Hotline: 4000-112-711  
 Baseus Design/Made in China

## **FCC Requirement**

changes or modifications not expressly approved by the party responsible for compliance could void the user's authority to operate the equipment.

This device complies with Part 15 of the FCC Rules. Operation is subject to the following two conditions:

- (1) this device may not cause harmful interference, and
- (2) this device must accept any interference received, including interference that may cause undesired operation.

Note: This equipment has been tested and found to comply with the limits for a Class B digital device, pursuant to Part 15 of the FCC Rules. These limits are designed to provide reasonable protection against harmful interference in a residential installation. This equipment generates, uses, and can radiate radio frequency energy, and if not installed and used in accordance with the instructions, may cause harmful interference to radio communications. However, there is no guarantee that interference will not occur in a particular installation. If this equipment does cause harmful interference to radio or television reception, which can be determined by turning the equipment off and on, the user is encouraged to try to correct the interference by one or more of the following measures:

- Reorient or relocate the receiving antenna.
- Increase the separation between the equipment and receiver.
- Connect the equipment into an outlet on a circuit different from that to which the receiver is connected.
- Consult the dealer or an experienced radio/TV technician for help.