

# SEESUN B:CON

MANUAL  
SEESUN B:CON  
B:CON-10  
Rev 1.0KR

The SEESUN B:CON is a light weight wireless headset sunglasses that uses Bluetooth® technology and Bone conduction transducer.

Note: Please read all information carefully prior to using SEESUN B:CON in order to prevent damages to the product and to enjoy the best performance.

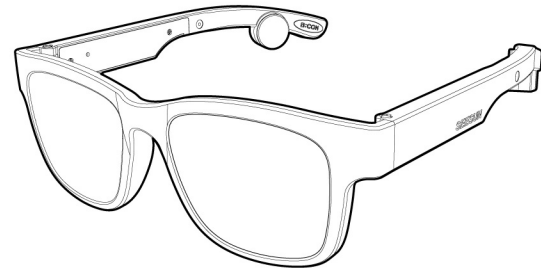
www.seesun.tv  
Copyright 2017 SEESUN.CO.,LTD All Rights Reserved.

Do not use replacement or components that do not comply with standards. It can cause a breakdown so cannot have a guarantee service even under warranty.

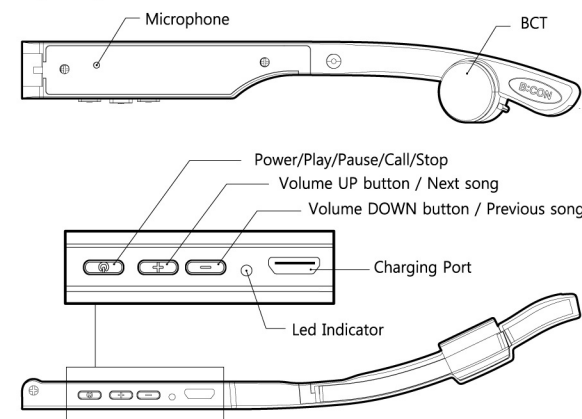
## Included in the package



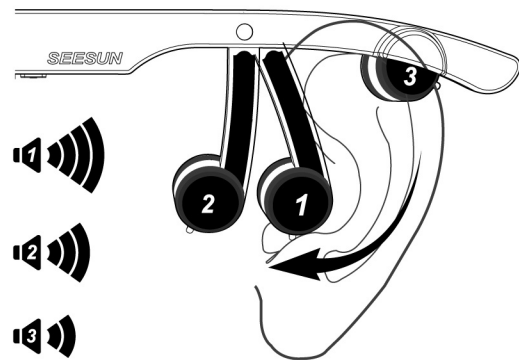
## Description of parts



## Right temple



## Volume level on each location near an ear



## How to adjust the location.

Each individual has different shape of bone of skull. Accordingly the points which users can hear well are different. SEESUN B:CON has find adjustment moving - system so please find correct position by moving BCT head.

## Charging

- When the charger is connected, with the power on or off, the headset will turn off.
- While charging, the LED indicator will show a solid red light.
- When charging is complete, the LED indicator will show a blue light.

## Low battery

- A low battery tone will announce when a batter is low.
- If the battery is not charged, the headset will turn off.
- Power on / Power off
- Press power button to power 'ON' or 'OFF' for 4 seconds.
- Pairing
- Before using the headset for the first time, you must pair it with a Bluetooth-enabled Device.

- 1) Easy Pairing
  - a) Press power button for 4 seconds to power on.
  - b) If it is your first time pairing the device it will automatically enter pairing mode. If it has been paired but no paired device is in range it will enter Pairing mode after 10 seconds. The LED indicator will flicker a red and a blue light.
  - c) On the device you wish to pair, find the bluetooth menu and "search for" or "add" new devices.
  - d) Select "B.CON-10" From the list of devices.
  - e) Once pairing is complete you will hear an announcement and led light will show a blue light.
- The B:CON will automatically turn off if not paired within 6 minutes.

## LED Indicator

B:CON Status	Action
Pairing Mode	The blue and red light flicker repeatedly
Connected	The blue light flickers every 5times
Call and Play connect	The blue light flickers every 5times

## Summary of Call function

Function	Status	Action
Answering a call	Ringing	Briefly press the power button
Calling	Power on	If call by the phone, B:CON will connect to call automatically.
Redial	Power on	Press the power button 2 straight times
Call reject	Ringing	Press the power button for 2seconds
Ending a call	Talking	Briefly press the power button
Volume control	Talking	Press + or - button

## Summary of Music function

Function	Status	Action
Play	Power on	Briefly press the power button
Pause	Music on	Briefly press the power button
Volume control	Music on	Press + or - button
Next/Previous song	Music on	Press + or - button 2 straight times

## Status of battery

Connect charging cable to the port on the bottom of temple. (charger is not provided)

LED indicator status (When charger is connected)	The Red LED stays on	The Blue LED stays on
Battery status	Charging	Charging complete

\* Please charge B:CON over 2hrs before first using.

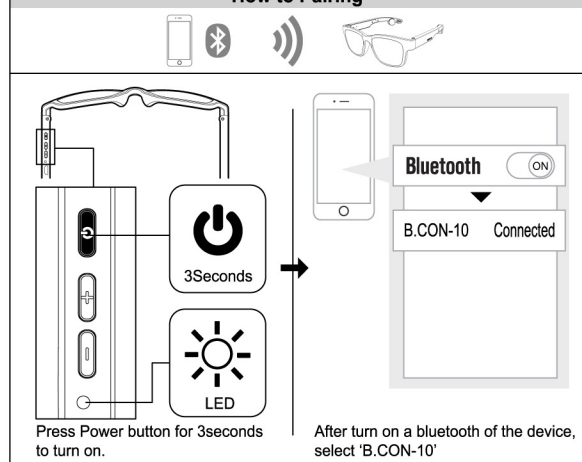
## Auto reconnect

- If the B:CON will disconnect, The headset will automatically reconnect when it is turned back on while in range. Out of range
- If the paired Devices are separated by a range of 33 feet (10 meters) or more, the headset will disconnect.
- If the headset does not automatically reconnect when it is back within the required range, power on again to reconnect manually.

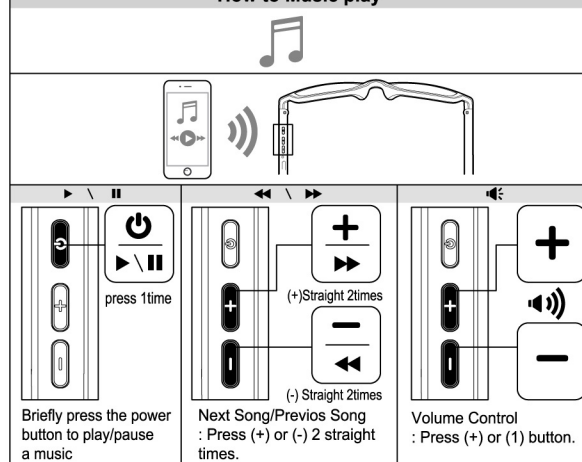
## Troubleshooting

Issue	Possible solution
Does not turn on	Check whether the battery of the B:CON is fully charged
Unable to communicate with the B:CON	Check whether the battery of the B:CON is low Check whether the headset supports the headset or hands-free Bluetooth profiles
Low sound	Check and increase the volume level

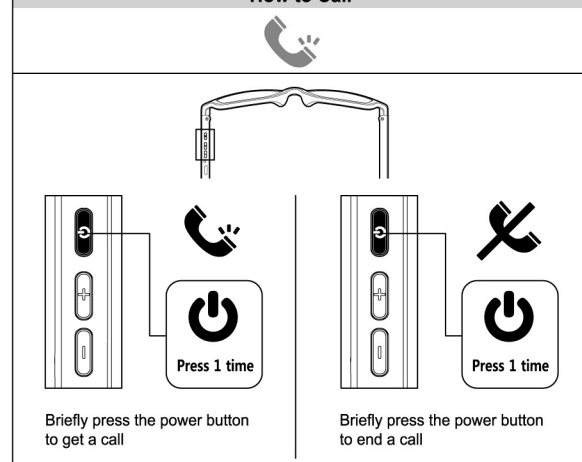
## How to Pairing



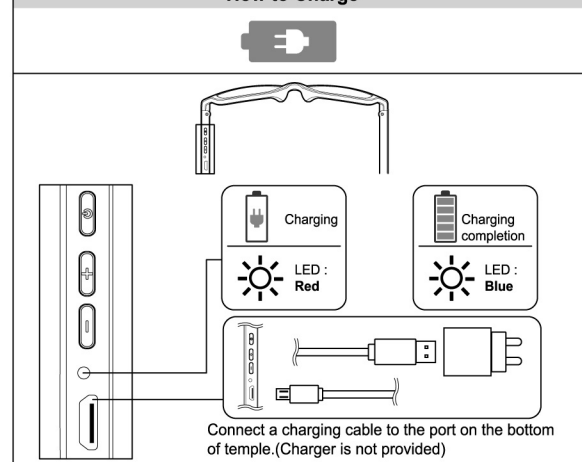
## How to Music play



## How to Call



## How to Charge



## Specification

DEVICE	
Model	SEESUN B:CON-10
Size	
Weight	45g
Frame materials	TR90/ULTEM/SILICON
Lenses materials	TAC(Polarized), Blue light / 6Based
Bluetooth Ver	Bluetooth 4.1+EDR
Bluetooth Profile	A2DP 1.3,HFP 1.6,HSP 1.2,AVRCP 1.5
Transmission range	Up to 33feet(10 meters)
Charger Type	Micro-USB
Charger Input	DC 5V min 0.5A
Battery	Li-polymer 3.7V 200mAh
Charge time	Approximately 2 hours
Talk time	Up to 10 hours
Play Time	Up to 7 hours
Standby time	Up to 120 hours
Operation Circumstances	Temperature / -10°C~50°C Humidity / 60 % ~ 70%
Country of origin	Korea

## BCT SPEAKER

Type	Bone Conduction Transducer
Bone Conduction Transducer	16 Ohms ±15% at 1 Khzs
Frequency response	100 HZ ~ 12,000 HZ
Bone Conduction Sensitivity (1Khz)x 100mV rms	77 dB ± 3dB (dB re 1.0 dyne)

## MIC

Type	Electrets Condenser Microphone
Output impedance	2.2 Kohms
Frequency response	20 Hz ~ 20 KHz
MIC sensitivity	42 dB±3dB at 1 KHz
Directivity	OMNI Directivity

## Reset

If B:CON can't connect to a Bluetooth on a device, you can reset B:CON to its factory settings. When power B:CON on, please press (+),(-) buttons together for over 3seconds. And then the LED indicator flickers a red and a blue light with a vibration. B:CON will return to a factory reset.

## Precautions

- Do not drop the device.
- Do not modify, repair, or disassemble.
- Do not expose directly to water, alcohol, benzene, etc. for cleaning.
- Do not expose directly to flammables.
- Do not place or keep the device near flammables.
- Keep the device away from excessive humidity and dust.
- Do not place heavy objects on the device.

- Changes or modifications not expressly approved by the party responsible for compliance could void the user's authority to operate the equipment.
- There is a risk of explosion if the battery is replaced by an incorrect type.
- Dispose of used batteries according to the instructions.
- Do not change glasses lenses by yourselves. Lenses or frames can be broken by over pressure or inexperienced. Please visit near optical store to change lenses.
- Do not move BCT head with excessive force above the range of moving. It may cause damaged or broken.

This device complies with Part 15 of the FCC Rules. Operation is subject to the following two conditions:  
(1) this device may not cause harmful interference, and (2) this device must accept any interference received, including interference that may cause undesired operation.

Bone conduction is the conduction of sound to the inner ear through the bones of the skull. Bone conduction transmission can be used with individuals with normal or impaired hearing. Bone conduction is one reason why a person's voice sounds different to them when it is recorded and played back. Because the skull conducts lower frequencies better than air, people perceive their own voices to be lower and fuller than others do, and a recording of one's own voice frequently sounds higher than one expects it to sound. Musicians may use bone conduction while tuning stringed instruments to a tuning fork. After the fork starts vibrating, placing it in the mouth with the stem between the back teeth ensures that one continues to hear the note via bone conduction, and both hands are free to do the tuning.

## How to wear

Just wear the glasses as general glasses. To find good sounds and location for each individual, please pull down BCT head to the front of ear before wearing glasses. If trying to move BCT head as wearing, it can make uncomfortable.

## FCC RF Exposure Information

This equipment complies with FCC RF exposure limit requirements set for in an uncontrolled environment

## Additional information

### Radio frequency exposure

This Bluetooth® Bone Conduction Headset, B:CON, is a radio transmitter and receiver. When in operation it communicates with a Bluetooth® equipped mobile device by receiving and transmitting radio frequency (RF) electromagnetic fields (microwaves) in the frequency range 2.4 to 2.4835 GHz. The output power of the radio transmitter is low (0.001 watts). Your Bluetooth® Headset is designed to operate in compliance with the RF exposure guidelines and limits set by national authorities and international - health agencies.

### Limited warranty

Subject to the conditions of this Limited Warranty, SEESUN.CO.,LTD warrants this product to be free from defects in design, material and workmanship at the time of its original purchase by a consumer, and for a subsequent period of one (1) year. Should your product need warranty service, please return it to the dealer from whom it was purchased or contact a contact centre to get further information.

SEESUN CS DEPT  
509 Hwarang-ro, Dong-gu,  
Daegu, Republic of Korea 41166  
TEL : 82 + 80-961-2000