



233621 SEED Antenna Spec



Part name: PCB IFA Antenna

Client: 233621

Design: Guixing wang

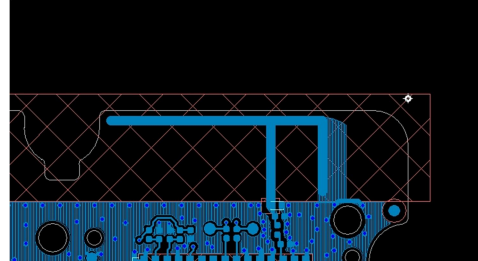
Date: 2022-12-25



1. Antenna Type

The antenna is printed on PCB by IFA , and works in 2.4GHz ISM band, central frequency at 2.45GHz.






| | |
|-------------------|---------------|
| Antenna Type | PCB IFA |
| Dimensions | L=25mm H=5mm |
| Central Frequency | 2.45GHz |
| Bandwidth | 150MHz (Min) |
| Return Loss | -16.1dB (Max) |
| Peak Gain | 2.63dBi |

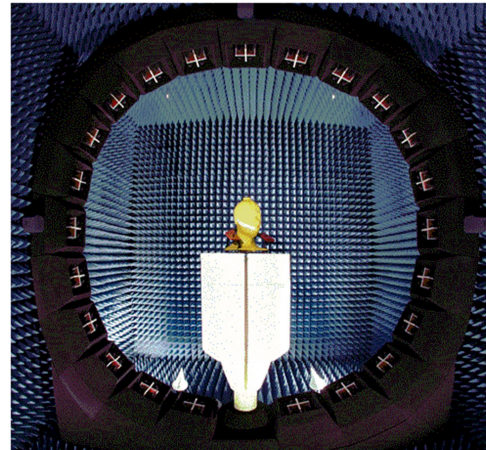


2. Test Lab

Test lab: ETS Microwave Chamber with 23 measurement antennas in Grandsun Electronics OTA Lab.

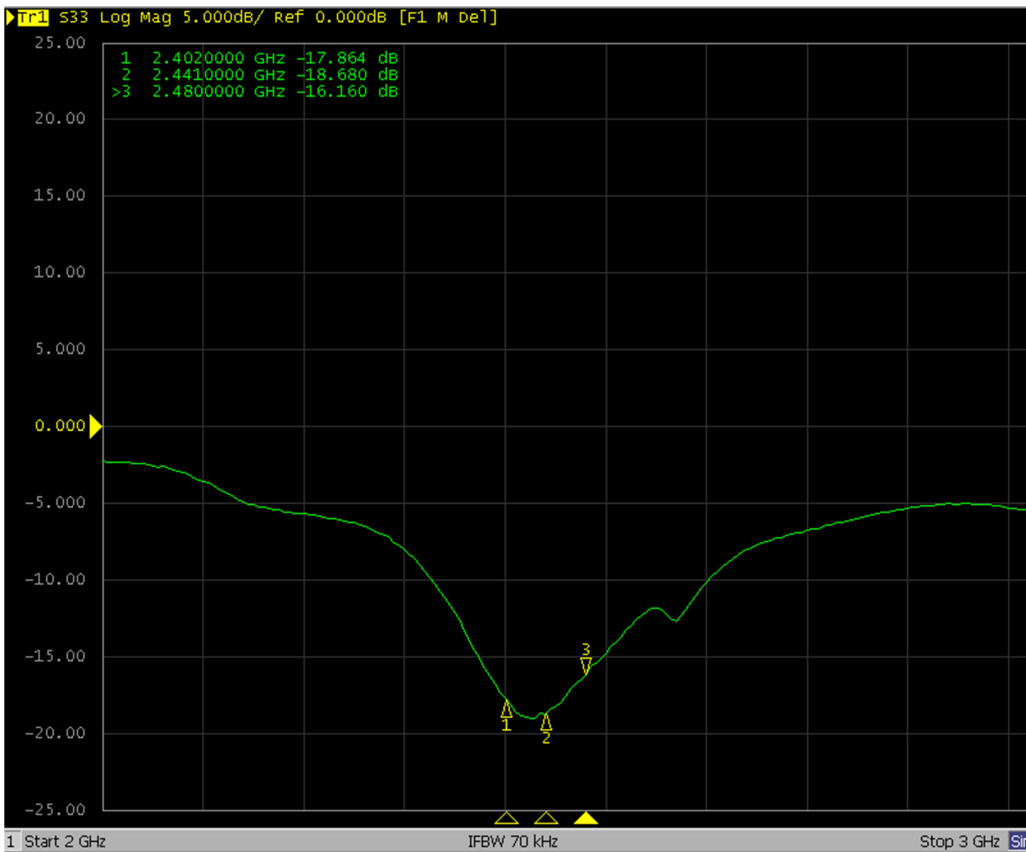
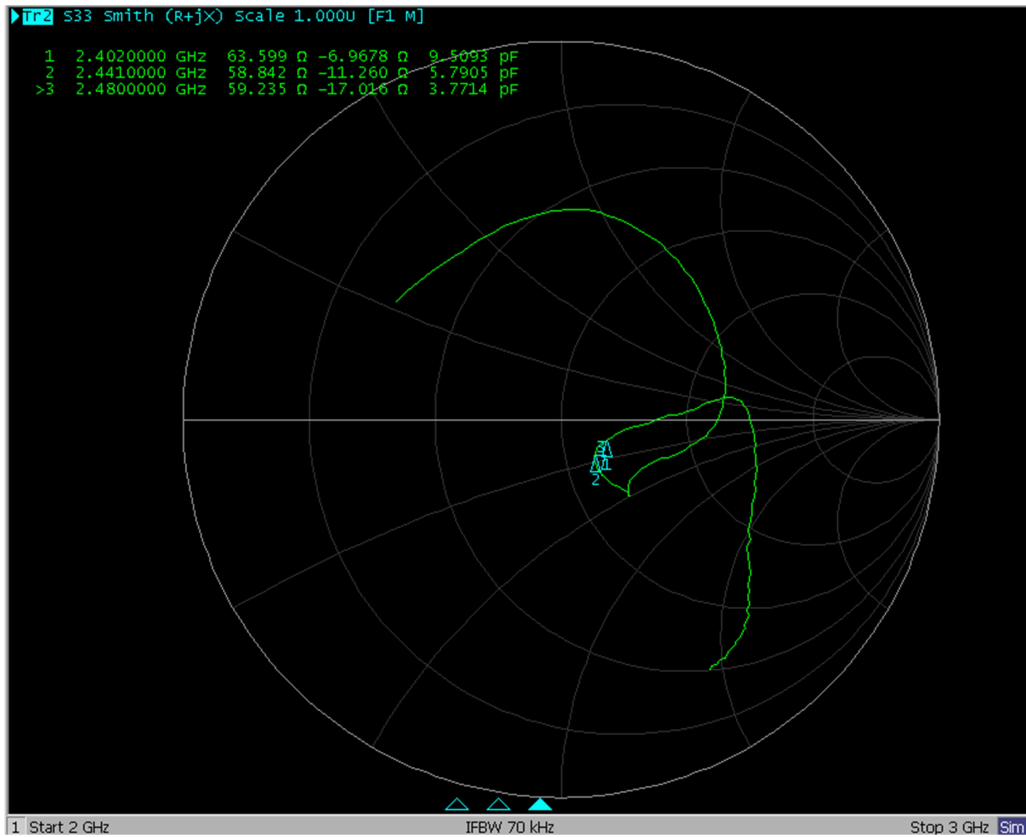
AMS-8923 Basics

-  Regular Chamber Size: 16ft L x 16ft W x 16ft H
(4.9m x 4.9m x 4.9m)
-  Test Distance: 1.95 meter
-  Frequency: 700MHz – 6GHz
-  Fully anechoic covered with EHP-12 absorbers
-  Quiet Zone Diameter:
 - 30cm
 - 50cm
 - per CTIA 3.2 versions





3. Passive test -S11





4. Passive Efficiency and Gain

| Frequency/MHz | 2400 | 2410 | 2420 | 2430 | 2440 | 2450 | 2460 | 2470 | 2480 | 2490 |
|---------------|-------|-------|-------|-------|-------|-------|-------|-------|-------|-------|
| Efficiency/% | 61.82 | 62.92 | 62.58 | 60.91 | 61.52 | 62.41 | 61.99 | 63.36 | 62.65 | 63.03 |
| Gain/dBi | 2.38 | 2.56 | 2.42 | 2.17 | 2.05 | 2.08 | 2.18 | 2.39 | 2.43 | 2.63 |

【Remark】 2400-2490MHz Peak Gain 2.63 dBi

5. Passive Test Graph

