

上海德门电子科技有限公司

SHANGHAI DEMAN ELECTRONICS TECHNOLOGY CO.,LTD.

地址：上海市闵行区颛桥镇瓶安路1259号3号厂房

Address: Plant No. 3, No. 1259, Pin 'an Road, Zhuanqiao Town, Minhang District, Shanghai

产品规格书

PRODUCT SPECIFICATION

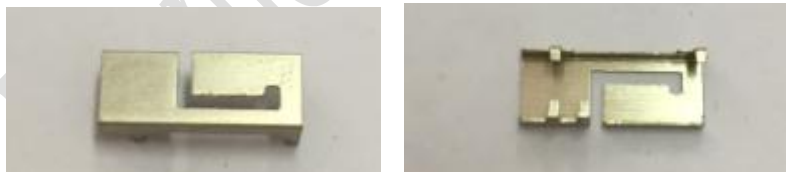
客户 Customer	
客户编码 Customer's part number	
产品料号 Product Material Code	TFPD07H09100011
工作频段 Working Band	2400-2500MHz
发行日期 Issue Date	2018-09-28
发行版本 Release Version	A
作者 Author	

1 产品技术指标 (PRODUCT TECHNICAL SPECIFICATION)

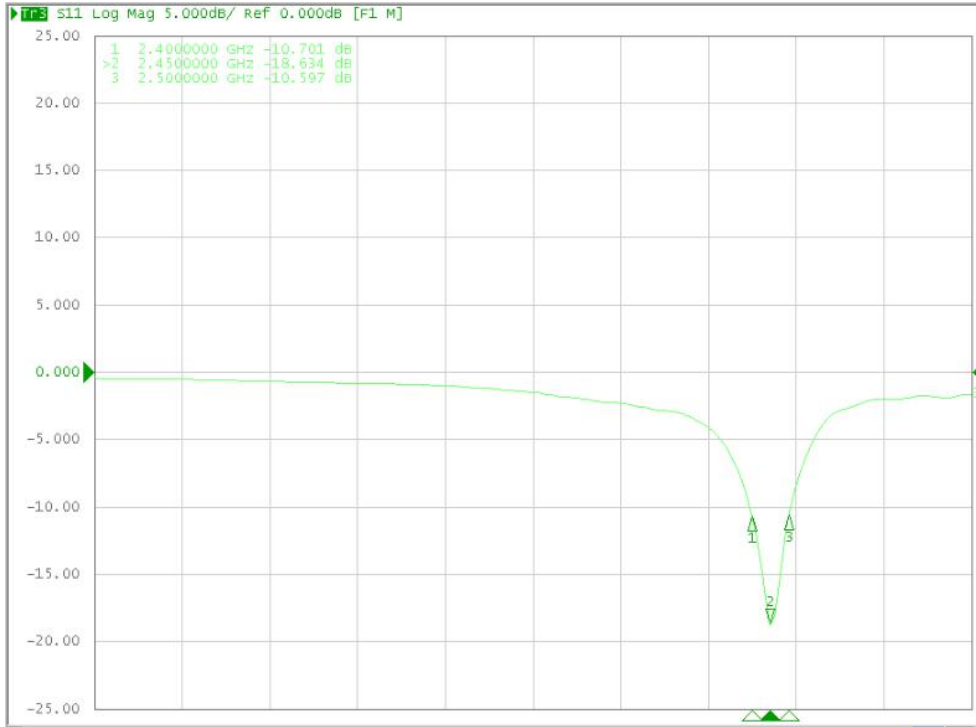
电性能指标 Electrical Specifications	
频率范围 Frequency Range (MHz)	2400-2500
频带宽度 Bandwidth (MHz)	100
输入阻抗 Input Impedence (Ω)	50
电压驻波比 VSWR	<2.5
最大增益 Max. Gain (dBi)	2.46
极化形式 Polarization Type	垂直极化 Vertical
机械指标 Mechanical Specifications	
天线长度 Antenna Length (mm)	13.75mm
连接方式 Connection Mode	焊接 Welding
工作温度 Operatin Temp ($^{\circ}\text{C}$)	-30~70
储存温度 Storing Temp ($^{\circ}\text{C}$)	-30~70
外壳颜色 Radome Color	银色 Silver

2 产品电性能参数 (PRODUCT ELECTRICAL PERFORMANCE PARAMETER)

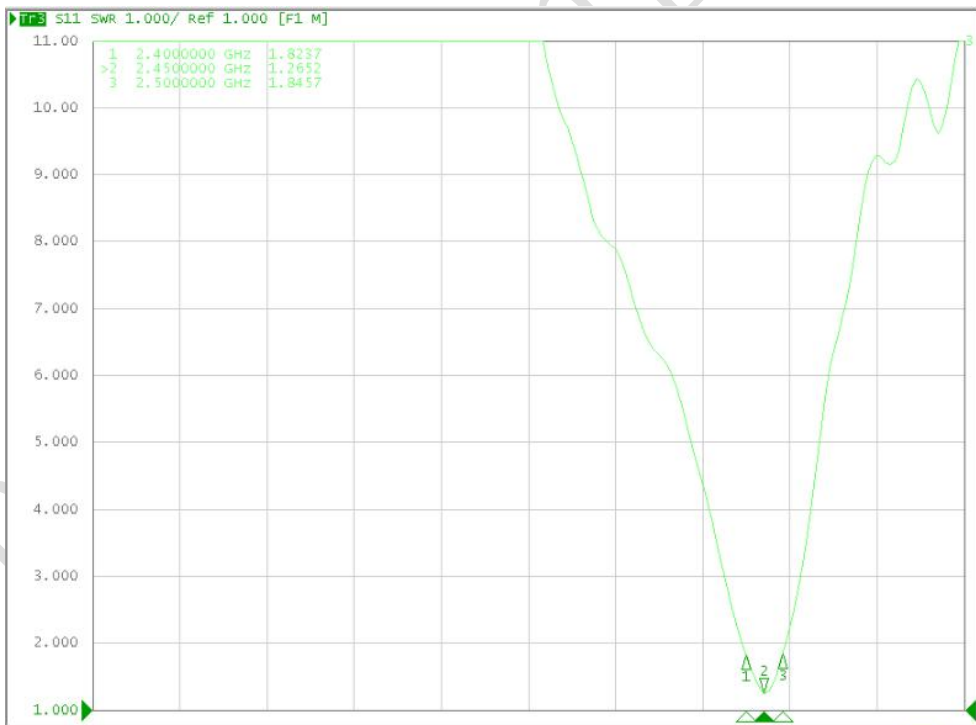
2.1 产品图片 (Product picture)



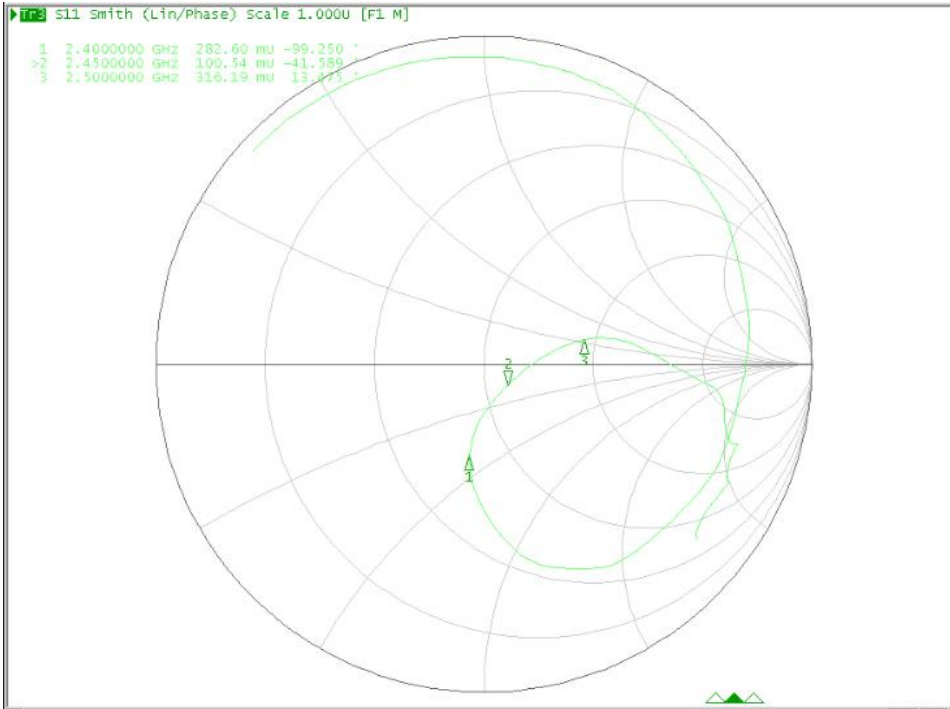
2.2 反射损耗 (S11)



2.3 驻波比 (VSWR)



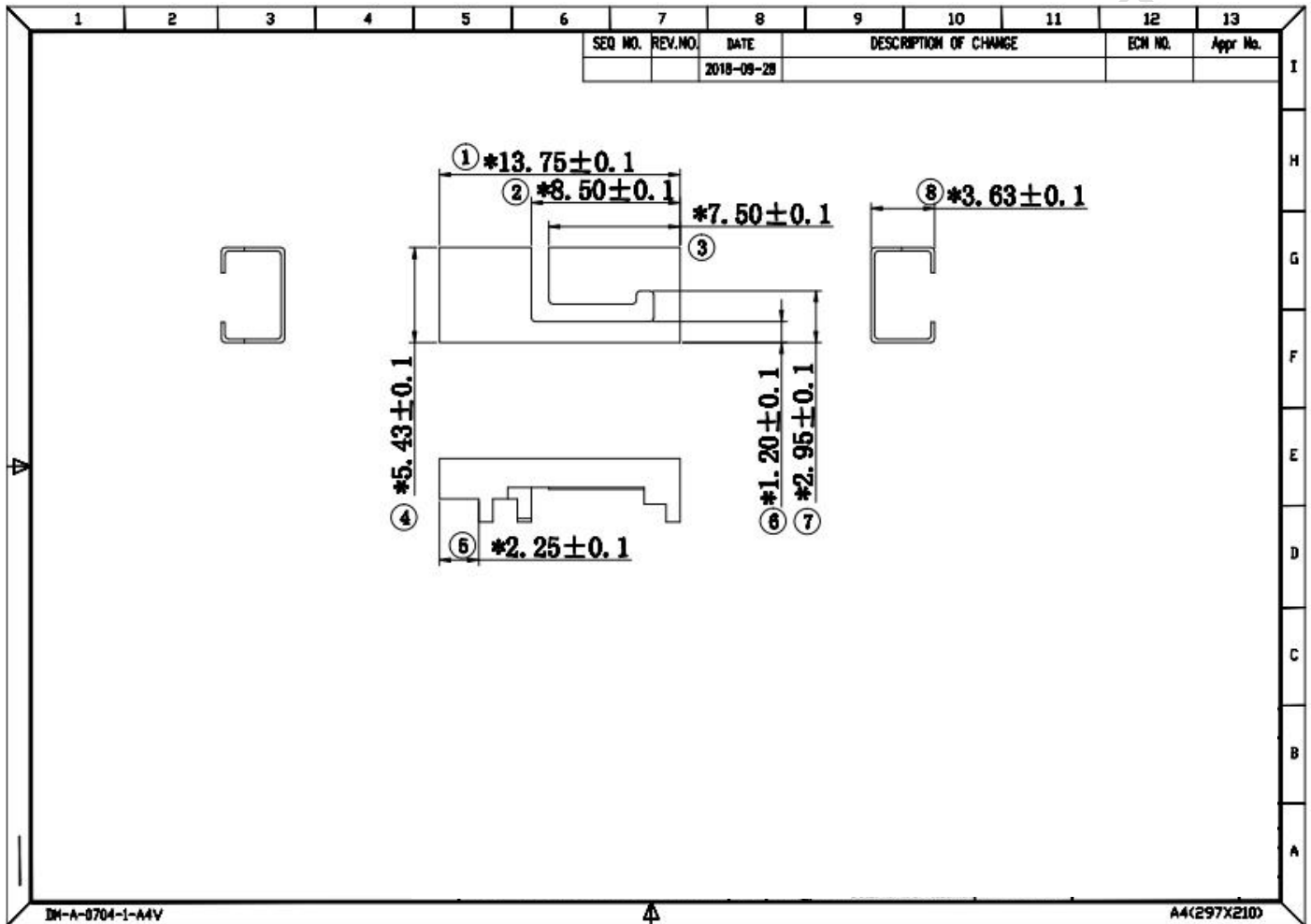
2.4 史密斯图 (Smith Chart)



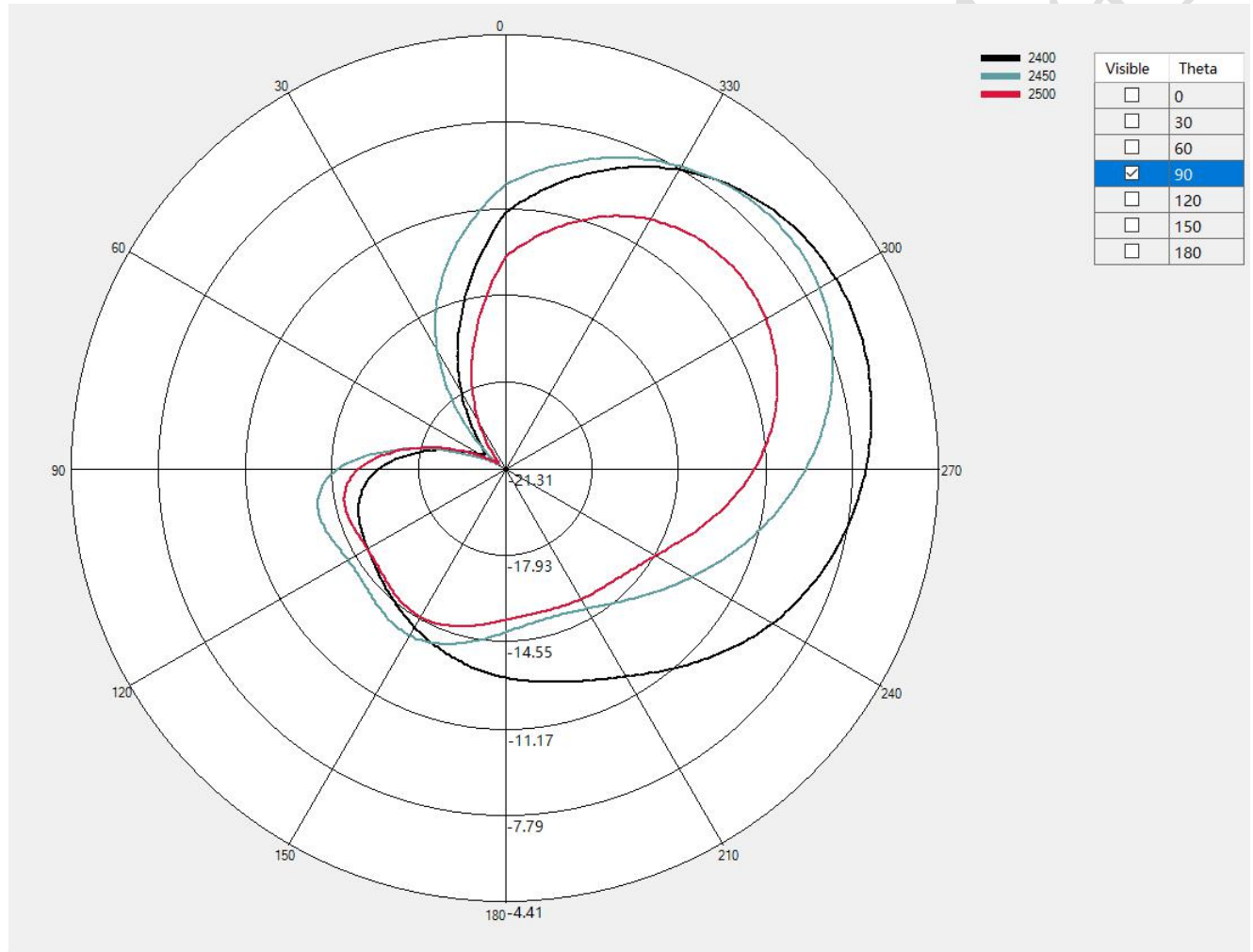
2.5 效率、增益 (Efficiency/Gain)

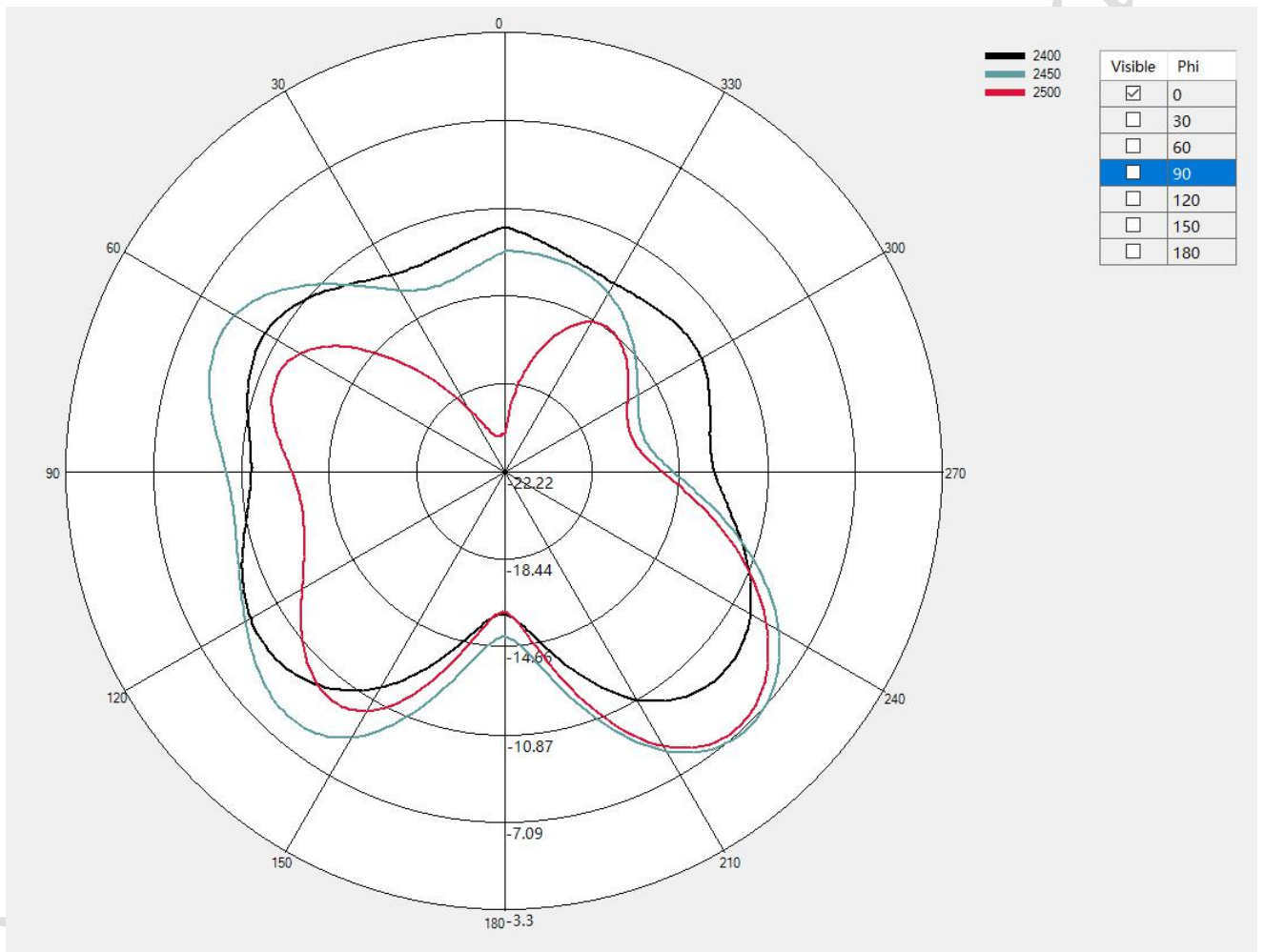
Freq. (MHz)	Gain(dBi)	Effi. (%)
2400	1.94	56.04
2410	2.02	57.32
2420	2.39	61.25
2430	2.46	61.67
2440	2.42	63.55
2450	2.26	63.16
2460	2.30	63.47
2470	2.10	62.04
2480	2.23	61.82
2490	1.96	59.30
2500	1.85	56.17
Avg.	2.17	60.52

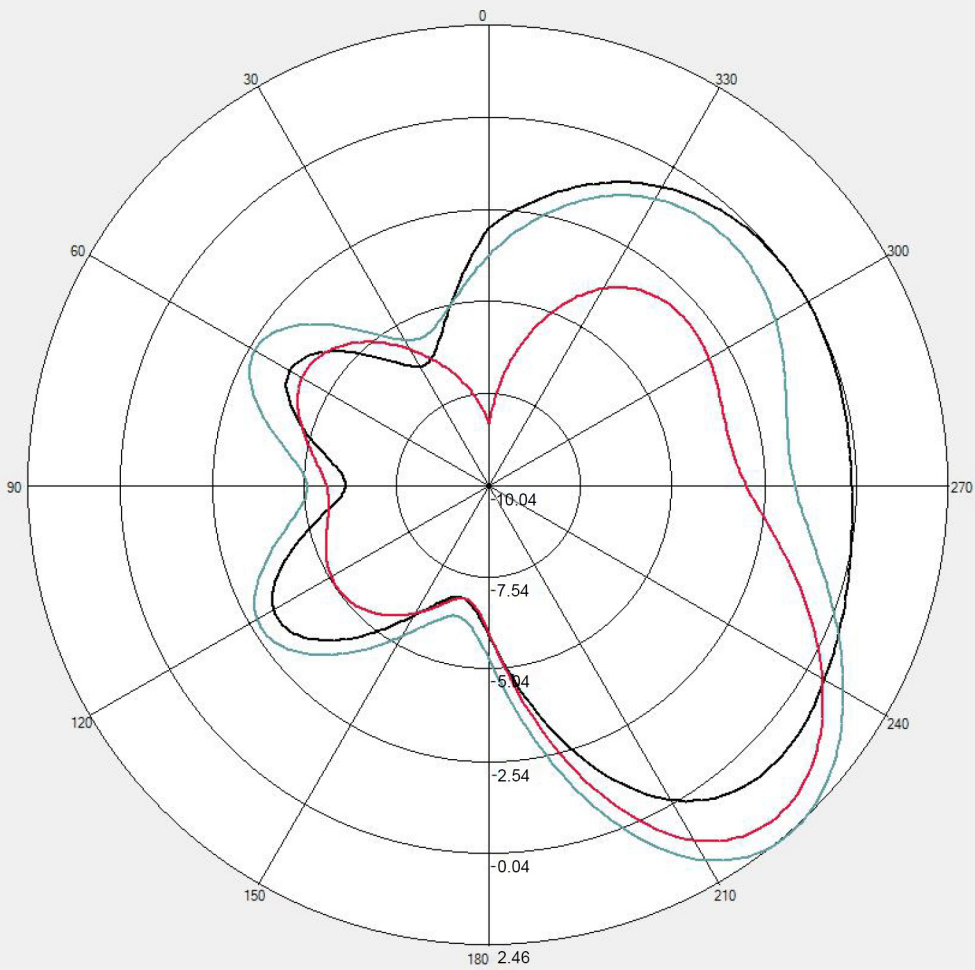
3 产品尺寸 (Product dimensions)



4 2D图 (2D graph)







2400
2450
2500

Visible	Phi
<input type="checkbox"/>	0
<input type="checkbox"/>	30
<input type="checkbox"/>	60
<input checked="" type="checkbox"/>	90
<input type="checkbox"/>	120
<input type="checkbox"/>	150
<input type="checkbox"/>	180