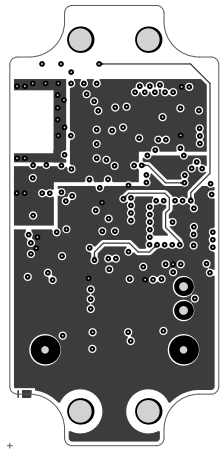


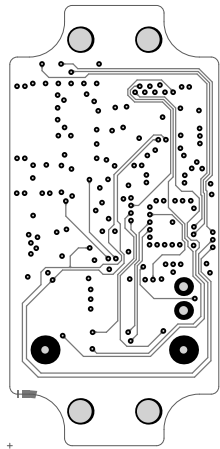
1

BIG KAISER Precision Tooling Ltd. Glattalstrasse 516 CH-8153 Rümlang +41 (44) 817 92 00	PRODUCT EWD EVO Mainboard				LAYER TOP Layer 1	
	APPROVALS			DATE	ARTICLE NO. 395.163 - 7A	
	DRAWN	RS		25.11.2016		
	CHECKED	FA				
	ISSUED	FA			REV v07.00 A	ORIENTATION _{Top View}



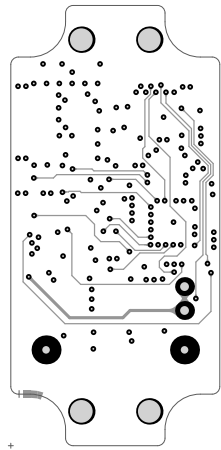
2

BIG KAISER Precision Tooling Ltd. Glattalstrasse 516 CH-8153 Rümlang +41 (44) 817 92 00	PRODUCT EWD EVO Mainboard				LAYER Inner Layer 2	
	APPROVALS				DATE	ARTICLE NO. 395.163 - 7A
	DRAWN	RS			25.11.2016	
	CHECKED	FA				
	ISSUED	FA				REV v07.00 A ORIENTATION _{Top View}



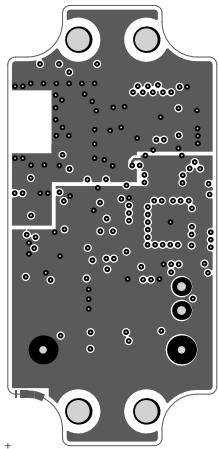
3

BIG KAISER Precision Tooling Ltd. Glattalstrasse 516 CH-8153 Rümlang +41 (44) 817 92 00	PRODUCT EWD EVO Mainboard				LAYER Inner Layer 3	
	APPROVALS				DATE	ARTICLE NO. 395.163 - 7A
	DRAWN	RS			25.11.2016	
	CHECKED	FA				
	ISSUED	FA				REV v07.00 A ORIENTATION _{Top View}



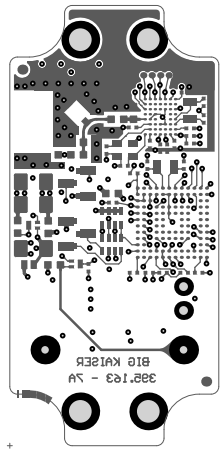
4

BIG KAISER Precision Tooling Ltd. Glattalstrasse 516 CH-8153 Rümlang +41 (44) 817 92 00	PRODUCT EWD EVO Mainboard				LAYER Inner Layer 4	
	APPROVALS				DATE	ARTICLE NO. 395.163 - 7A
	DRAWN	RS			25.11.2016	
	CHECKED	FA				
	ISSUED	FA				REV v07.00 A ORIENTATION _{Top View}



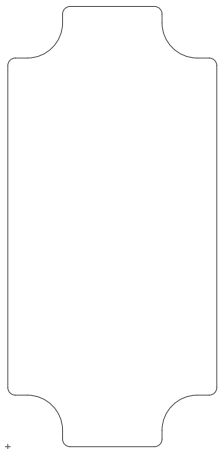
5

BIG KAISER Precision Tooling Ltd. Glattalstrasse 516 CH-8153 Rümlang +41 (44) 817 92 00	PRODUCT EWD EVO Mainboard				LAYER Inner Layer 5	
	APPROVALS				DATE	ARTICLE NO. 395.163 - 7A
	DRAWN	RS			25.11.2016	
	CHECKED	FA				
	ISSUED	FA				REV v07.00 A ORIENTATION _{Top View}

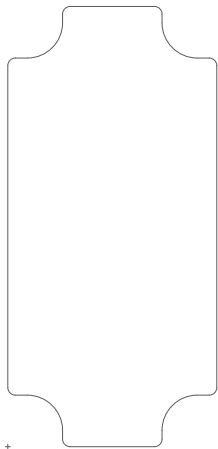


6

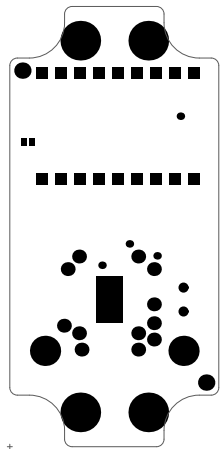
BIG KAISER Precision Tooling Ltd. Glattalstrasse 516 CH-8153 Rümlang +41 (44) 817 92 00	PRODUCT EWD EVO Mainboard				LAYER Bottom Layer 6	
	APPROVALS			DATE	ARTICLE NO. 395.163 - 7A	
	DRAWN	RS		25.11.2016		
	CHECKED	FA				
	ISSUED	FA			REV v07.00 A	ORIENTATION _{Top View}



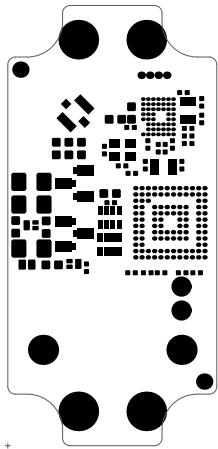
BIG KAISER Precision Tooling Ltd. Glattalstrasse 516 CH-8153 Rümlang +41 (44) 817 92 00	PRODUCT EWD EVO Mainboard				LAYER	
	APPROVALS			DATE	ARTICLE NO. 395.163 - 7A	
	DRAWN	RS		25.11.2016		
	CHECKED	FA				
	ISSUED	FA			REV v07.00 A	ORIENTATION _{Top View}



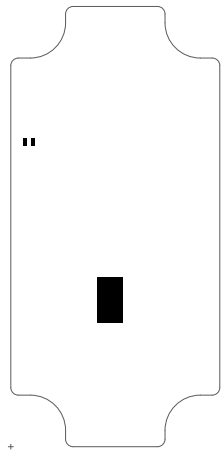
BIG KAISER Precision Tooling Ltd. Glattalstrasse 516 CH-8153 Rümlang +41 (44) 817 92 00	PRODUCT EWD EVO Mainboard				LAYER	
	APPROVALS			DATE	ARTICLE NO. 395.163 - 7A	
	DRAWN	RS		25.11.2016		
	CHECKED	FA				
	ISSUED	FA			REV v07.00 A	ORIENTATION _{Top View}



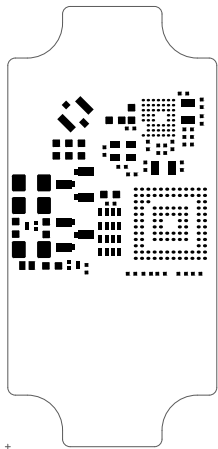
BIG KAISER Precision Tooling Ltd. Glattalstrasse 516 CH-8153 Rümlang +41 (44) 817 92 00	PRODUCT EWD EVO Mainboard				LAYER Solder Top	
	APPROVALS			DATE	ARTICLE NO. 395.163 - 7A	
	DRAWN	RS		25.11.2016		
	CHECKED	FA				
	ISSUED	FA			REV v07.00 A	ORIENTATION _{Top View}



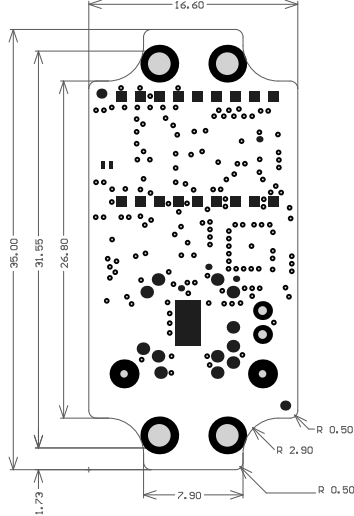
BIG KAISER Precision Tooling Ltd. Glattalstrasse 516 CH-8153 Rümlang +41 (44) 817 92 00	PRODUCT EWD EVO Mainboard				LAYER Solder Bottom	
	APPROVALS				DATE	ARTICLE NO. 395.163 - 7A
	DRAWN	RS			25.11.2016	
	CHECKED	FA				
	ISSUED	FA				REV v07.00 A ORIENTATION _{Top View}



BIG KAISER Precision Tooling Ltd. Glattalstrasse 516 CH-8153 Rümlang +41 (44) 817 92 00	PRODUCT EWD EVO Mainboard				LAYER Paste Top	
	APPROVALS				DATE	ARTICLE NO. 395.163 - 7A
	DRAWN	RS			25.11.2016	
	CHECKED	FA				
	ISSUED	FA				REV v07.00 A ORIENTATION _{Top View}

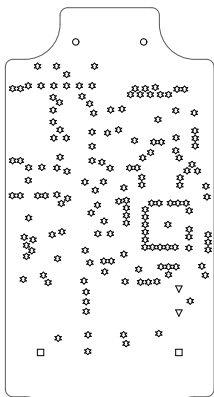


BIG KAISER Precision Tooling Ltd. Glattalstrasse 516 CH-8153 Rümlang +41 (44) 817 92 00	PRODUCT EWD EVO Mainboard				LAYER Paste Bottom	
	APPROVALS			DATE	ARTICLE NO. 395.163 - 7A	
	DRAWN	RS		25.11.2016		
	CHECKED	FA				
	ISSUED	FA			REV v07.00 A	ORIENTATION _{Top View}



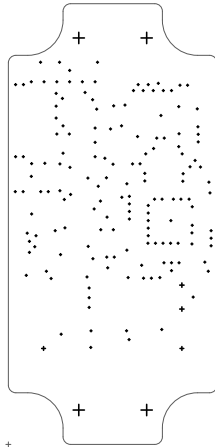
BIG KAISER Precision Tooling Ltd. Glattalstrasse 516 CH-8153 Rümlang +41 (44) 817 92 00	PRODUCT EWD EVO Mainboard			LAYER		
	APPROVALS			DATE	ARTICLE NO. 395.163 - 7A	
	DRAWN	RS		25.11.2016		
	CHECKED	FA				
	ISSUED	FA			REV v07.00 A	ORIENTATION _{Top View}

Layer Stack Up Detail for: 6 Layer PCB				
Layer Name	Gerber Document	Copper Thickness	Dielectric Height	Dielectric Type
Top Solder Mask	(,GTS)			Solder Resist
Top Copper (1)	(,GTL)	35 um		
UCC Layer (2)	(,GPI)	35 um	0.123 mm	FR-4
Signal Layer 1 (3)	(,GP2)	35 um	0.205 mm	FR-4
Signal Layer 2 (4)	(,GP3)	35 um	0.105 mm	FR-4
GND Layer (5)	(,GP4)	35 um	0.205 mm	FR-4
Bot. Copper (6)	(,GBL)	35 um	0.123 mm	FR-4
Bot. Solder Mask	(,GBS)			Solder Resist
			TOTAL: 1.033 mm	
Notes...				
1. Board Surface Finish is Electroless Nickel / Immersion Gold (ENIG)				
2. Via covered with soldermask: Bottom and Top				
3. Maximum PCB Board Thickness: 1 mm				



Symbol	Count	Hole Size	Plated	Hole Type
□	2	0.600mm (23.62mil)	PTH	Round
▽	2	0.700mm (27.56mil)	PTH	Round
○	4	1.800mm (70.87mil)	PTH	Round
☆	158	0.150mm (5.91mil)	PTH	Round
	166 Total			

BIG KAISER Precision Tooling Ltd. Glattalstrasse 516 CH-8153 Rümlang +41 (44) 817 92 00	PRODUCT EWD EVO Mainboard			LAYER Drill Drawing		
	APPROVALS			DATE	ARTICLE NO. 395.163 - 7A	
	DRAWN	RS		25.11.2016		
	CHECKED	FA				
	ISSUED	FA			REV v07.00 A	ORIENTATION Top View



BIG KAISER Precision Tooling Ltd. Glattalstrasse 516 CH-8153 Rümlang +41 (44) 817 92 00	PRODUCT EWD EVO Mainboard				LAYER Drill Guide	
	APPROVALS				DATE	ARTICLE NO. 395.163 - 7A
	DRAWN	RS			25.11.2016	
	CHECKED	FA				
	ISSUED	FA				
				REV v07.00 A	ORIENTATION Top View	