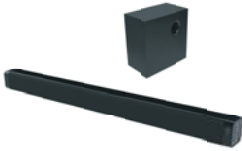




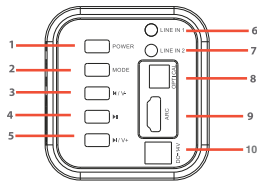
SOUNDBAR
MODEL:DGSB100BLK



USER MANUAL

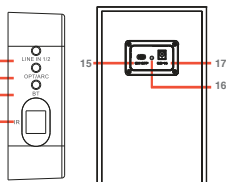
Location of controls

SIDE PANEL



- [POWER] button : Power ON/OFF
- [MODE] button : Switch modes
- [M/V-] button : decrease volume / skip to previous track
- [M] button : Play / pause track
- [M/V+] button : increase volume / skip to next track
- [LINE IN 1] Input : Input LINE IN 1
- [LINE IN 2] Input : Input LINE IN 2
- [OPTICAL] : Input OPTICAL
- [ARC] : ARC jack
- [DC-14V] : DC 14V IN jack

FRONT PANEL SUBWOOFER BACK PANEL

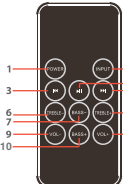


- [LINE IN 12] : Input LINE IN 1 LED indicator light (Red lights) / Input LINE IN 2 LED indicator light (Blue lights)
- [OPTICAL] : OPTICAL LED indicator light (Red lights) / ARC LED indicator light (Blue lights)
- [BT] : BT LED indicator light (The flashing blue lights)
- [IR] : Infrared remote control receiver
- [ON/OFF] Power ON/OFF
- Connection indicator light (Blue lights)
- [DC 14V] DC 14V IN jack

Wireless Subwoofer Connection

First plug in the DC power supply, then press the switch. When the soundbar and the subwoofer are plugged in and powered on, the wireless subwoofer will automatically connect to the soundbar.

REMOTE CONTROL



- [POWER] Key: Standby Power ON/OFF
- [INPUT] Key: Switch modes
- [M] Key: Skip to previous track
- [M] Key: Play/pause music
- [M] Key: Skip to next track
- [TREBLE-] Key: Decrease treble volume
- [BASS-] Key: Decrease bass volume
- [TREBLE+] Key: Increase treble volume
- [BASS+] Key: Increase bass volume
- [VOL-] Key: Decrease volume
- [VOL+] Key: Increase volume

Mounting the speaker

- Measure a width of 31.49 inches on the wall.
- Mark the position of the mounting screws on the wall using a pencil.
- Drill the supplied screws directly into the marks that you have made on the wall and leave approximately 0.3 inch length to hook the Wireless Sound Bar.
- Put the Wireless Sound Bar onto the mounting screws. Make sure they are firm and stable.



Operation process

- Connect the DC power cord into a wall socket.
- Turn the speaker on by pressing the [POWER] button on the speaker or remote control.

3.1 Bluetooth mode operation

3.1.1 Press the [MODE] button on the speaker or the [INPUT] button on the remote control. When [BT] bluetooth indicator lights flash blue and a "drip" sound is heard, then go into bluetooth pairing mode.

3.1.2 During the pairing process, keep the speaker and bluetooth device within 10 meters of each other.

3.1.3 Set your phone or other bluetooth device to bluetooth status.

Bluetooth Connection Method for Android system:

1. Go to SETTINGS>BLUETOOTH(make sure bluetooth is turned ON)

2. When your bluetooth enabled device finds the speaker, select "DGSB100BLK" from the list of found devices. When succeeding pairing, you will hear "beep beep".

3. [BT] bluetooth indicator light appears normally on. When playing the music, the blue led light will flash slowly.



Bluetooth Connection Method for iPhone IOS system:

1. Go to SETTINGS>BLUETOOTH(make sure bluetooth is turned ON)

2. When your bluetooth enabled device finds the speaker, select "DGSB100BLK" from the list of found devices. When paired successfully, you will hear "beep beep".

3. [BT] bluetooth indicator light appears on. When playing music, the blue led light will flash slowly.



3.2 Optical/ARC mode operation

3.2.1 Please insert one connection port of OPTICAL fiber into the 8 [OPTICAL] fiber input jack or one connection port of ARC fiber into the 8 [ARC] fiber input jack first, and then insert another connection port into the socket of media playback device.

3.2.2 Press the [MODE] button on the speaker or the [INPUT] button on the remote control. When [12] [OPT/ARC] indicator lights up red light, then enter the Optical mode state. When [12] [OPT/ARC] indicator lights up blue light, then enter the ARC mode state.

3.2.3 Press the [MODE] button on the speaker or the [INPUT] button on the remote control. When [12] [OPT/ARC] indicator lights up blue light, then enter the ARC mode state.

3.2.4 Short press the [M/V+] button on the speaker or press the [VOL+] button on the remote control to reduce the volume.

3.2.5 Short press the [M/V-] button on the speaker or press the [VOL-] button on the remote control to increase the volume.

3.2.6 Press the [TREBLE+] button on the remote control to reduce the treble volume.

3.2.7 Press the [TREBLE-] button on the remote control to increase the treble volume.

3.2.8 Press the [BASS+] button on the remote control to reduce the bass volume.

3.2.9 Press the [BASS-] button on the remote control to increase the bass volume.

3.2.10 Long press the [M/V+] button on the speaker or press the [M] button on the remote control to skip to the previous song.

3.2.11 Long press the [M/V-] button on the speaker or press the [M] button on the remote control to skip to the next song.

3.2.12 Press the [M] button on the speaker or the remote control to play or pause music.

3.2.13 Press the [M] button on the speaker or the remote control to play or pause music.

3.2.14 Press the [M] button on the speaker or the remote control to play or pause music.

3.2.15 Press the [M] button on the speaker or the remote control to play or pause music.

3.2.16 Press the [M] button on the speaker or the remote control to play or pause music.

3.2.17 Press the [M] button on the speaker or the remote control to play or pause music.

3.2.18 Press the [M] button on the speaker or the remote control to play or pause music.

Specification

- Soundbar size : 940*70*74mm
- Bass size : 160*282*280mm
- BT working distance : 10m
- S/N : ≥65db
- BT IC : CW6693
- Output power : 50W
- Power DC : DC 14V/2A*2
- Frequency response : 80Hz-18KHz
- Distortion : ≤1%
- Driver Size : 2.5" * 2 + 5.25"

Malfunction analysis:

Consult the after-sale service for help.

Legal information:

Any copy, changes or modifications of the user manual not expressly approved unless dealer's permission.

Caution:

1. Do not take this apparatus apart or repair it.
2. Do not use this apparatus near water and humidity.
3. Clean only with a dry cloth.

Limited Warranty:

You may within 1 year from your original date of purchase return it to the authorized service for repair.

Cautions and warnings:

1. Do not use the bluetooth speaker near water or humidity; do not use the device near the bathtub, water tank, swimming pool and so on.
2. Do not install the bluetooth speaker in a extreme hot or cold environments.
3. Do not expose the device in the sunshine directly.
4. Do not use the device near fire, such as, stove, candle or fireplace and so on.
5. Do not use abrasive clearing solvents to clean the bluetooth speaker.

This device complies with part 15 of the FCC Rules.

Operation is subject to the following two conditions: (1) this device may not cause harmful interference, and (2) this device must accept any interference received, including interference that may cause undesired operation.



Manufacturer's 1-Year Limited Warranty

The manufacturer warrants that all parts and components are defect free in materials and workmanship for 1 year. This warranty is valid only in accordance with the conditions set forth below:

1. The warranty extends only to the original consumer purchaser and is not transferable. In addition, proof of purchase must be demonstrated.
2. This limited warranty is the only written or express warranty given by the manufacturer. Any implied warranty of merchantability or fitness for a particular purpose on this product is limited in duration to the duration of this warranty. Some states do not allow limitations on how long an implied warranty lasts, so the above limitation may not apply to you.
3. This warranty gives you specific legal rights. You may also have other rights which vary by state.

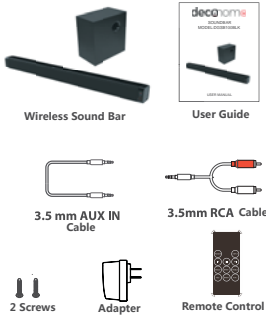
Procedure for Replacement or Return within the 1 Year:

To return the product for replacement or refund within the 1 year, the original purchaser must pack the product separately and send it postage paid with a description of the reason for replacement or refund, proof of purchase, and include your order number on the package, to the following address:

Deco Gear
80 Carter Drive
Edison, NJ 08817

折线

In the box

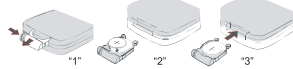


折线

Installing the battery

The battery for the remote control (1 CR2025 Lithium Battery) is included. To replace the battery, push and slide out the battery door on the remote control. Replace the battery with a new CR2025 battery with the positive (+) polarity facing up. Slide the battery door back in to the remote control.

NOTE: The soundbar remote is packaged with a plastic protection tab. Before operating the remote, gently pull the protective tab extending out of the remote control's battery door.



备注：送大货样，工程部确认尺寸、颜色及丝印内容后方可做大货

生产单号: 2019-03-14-002	型号: D-36PW
料号: 416-D36PW091-00R	物料名称: 说明书
其它要求: 105g铜版纸, 黑白印刷 需按要求折叠, 折叠后成品尺寸: 85*110mm 内容以工程承认样品为准	
美 工	结 构
电 子	核 核

FCC ID: 2AN3ID-36AHW-4

Changes or modifications not expressly approved by the party responsible for compliance could void the user's authority to operate the equipment.

This device complies with Part 15 of the FCC Rules. Operation is subject to the following two conditions: (1) this device may not cause harmful interference, and (2) this device must accept any interference received, including interference that may cause undesired operation.

This equipment has been tested and found to comply with the limits for a Class B digital device, pursuant to Part 15 of the FCC Rules. These limits are designed to provide reasonable protection against harmful interference in a residential installation. This equipment generates, uses and can radiate radio frequency energy and, if not installed and used in accordance with the instructions, may cause harmful interference to radio communications. However, there is no guarantee that interference will not occur in a particular installation.

If this equipment does cause harmful interference to radio or television reception, which can be determined by turning the equipment off and on, the user is encouraged to try to correct the interference by one or more of the following measures:

- Reorient or relocate the receiving antenna.
- Increase the separation between the equipment and receiver.
- Connect the equipment into an outlet on a circuit different from that to which the receiver is connected.
- Consult the dealer or an experienced radio/TV technician for help.

This equipment complies with FCC radiation exposure limits set forth for an uncontrolled environment. This equipment should be installed and operated with a minimum distance of 20cm between the radiator & your body. This transmitter must not be co-located or operating in conjunction with any other antenna or transmitter.