

wavecastRX

Bluetooth Receiver



User Guide

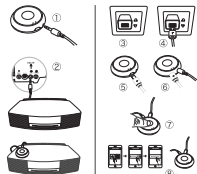
Congratulations on your purchase of the Wavecast RX Bluetooth wireless receiver! Wavecast RX receivers are true auto connect (i.e. Bluetooth) devices which can auto connect to any Bluetooth enabled audio device, such as cell phones, MP3 players, etc. Now you can stream music through your favorite audio system, without being tethered to music.

1. Product Overview

- ⓐ Main Function button (MFB) = Power on / Power Mode / Play / Pause / Power off
- ⓑ Bluetooth LED indicator
- ⓒ 3.5 mm audio jack
- ⓓ USB Type-C charging port
- ⓔ Dual connection indicator

2. Package Contents

- ⓐ 1 x Wavecast RX receiver (U.S. version)
- ⓑ 1 x 3.5mm audio cable
- ⓒ USB Type-C charging cable
- ⓓ User Guide



2. INITIAL SETUP

- Please see the diagrams above for reference for the steps below:
- Connect the 3.5mm 3-pin auxiliary cable to the 3.5mm port on Wavecast RX (reference 1 of Product Overview).
 - Connect the other end of the 3.5mm auxiliary cable to the audio device's 3.5mm AUX input (please ensure that you connect to the AUX input and not the output port marked with a speaker icon on your speaker and/or the head phone jack).
 - Insert the attached power adapter to add power.
 - Insert the USB charging cable into the power adapter.
 - Plug the USB Type-C end of the charging cable into the Wavecast RX's USB Type-C charging port (reference 4 of Product Overview).
 - At this point both the power cable and USB Type-C charging cable should be plugged into the Wavecast RX. This will automatically put the Wavecast RX into pairing mode.

- Press and hold the Multifunction button for 3 seconds to switch Wavecast RX off. You can also switch the device on and just let it power up. To confirm that the device is paired, you can let the device "power off" and "power on".
- Navigate to Bluetooth settings on your phone or tablet, and search for new devices. Once Wavecast RX appears, select it and follow the prompts to complete the pairing process. Once successfully paired, you will hear the phrase "successfully connected".

3. POWER OFF

- Press and hold the Multifunction button for 3 seconds to switch Wavecast RX off. You can also switch the device on and just let it power up.
- Remove the USB Type-C cable from the Wavecast RX to power the unit off.

4. PAIRING WITH TWO DEVICES

- Put the first device to Wavecast RX using the steps outlined above.
- Switch off Bluetooth on the first device. Wavecast RX should now be successful to be paired successfully. Once both devices are successfully connected, the second LED will light up blue.

5. RECONNECTING TO A PREVIOUSLY PAIRED DEVICE

- Whenever the Wavecast RX is powered on, it will automatically reconnect to the last paired and successful device.
- To pair the Wavecast RX to a newer device, press and hold the Multifunction button for approximately 3 seconds or until you hear the phrase "pairing", then follow the instructions above.

6. FUNCTION DESCRIPTION

Function	Indicator	LED
Power On	Change the Wavecast RX via USB Type-C	Blue LED flashes rapidly
Power Off	Using the USB Type-C cable from Wavecast RX	N/A
Paired	Press and hold the Multifunction button for 3 seconds. The device stops in pairing mode for 30 minutes. If not paired during this time, device will auto	Blue LED flashes rapidly
Play mode	If music is played, press the Multifunction button twice to start playing the music	Blue LED ON
Pause music	To pause music, press the Multifunction button once	Blue LED ON
Standby	Connected to a Bluetooth device, but in auto standby	Blue LED ON

7. RESETTING THE WAVECAST RX

If the Wavecast RX is working abnormally, it may require a factory reset. Once the reset is complete, all existing pairing information is lost, and all previously paired devices will have to be paired again using the steps outlined above.

Note: Please make sure that the Wavecast RX is powered on in each device prior to doing the factory reset.

To do a factory reset, press the Multifunction button for approximately six seconds, or until you hear the phrase "power off" followed by a beep.

8. PRODUCT SPECIFICATIONS

- Bluetooth Version: V5.0+ EDR
- Operating Range: 100m (328 ft) (in free space)
- Supported Profiles: A2DP, L2CAP, AVRCP, V1.0
- Supported Channels: AAC, SBC, MP3
- Maximum Support: 256K Connected to Two Devices.

9. WARRANTY

The Wavecast RX Bluetooth receiver ships with a 1-year warranty. If you do encounter any issues during the trial, you can either initiate a warranty claim by contacting us via email at support@tandemshawnee.com or by mail. See Contact Us page on our website. (<https://www.tandemshawnee.com/contact-us>)

NOTE: This equipment has been tested and found to comply with the limits for a Class B digital device, pursuant to part 15 of the FCC rules. These limits are designed to provide reasonable protection against harmful interference in a residential installation. This equipment generates and uses radio frequency energy and, if not installed and used in accordance with the instructions included in the user manual, may cause interference to radio communications. Operation of this equipment will cause the emission of radio frequency energy. This equipment does not use a shielded enclosure to reduce the amount of radio frequency energy that is emitted. The amount of radio frequency energy that is emitted is dependent upon the type of equipment used and the way it is connected to the equipment.

- Read and understand the operating manual.
- Increase the separation between the equipment and receiver.
- Connect the equipment to an outlet on a circuit different from that which the receiver is connected.
- Consult the dealer or an experienced radio/television technician for help.

Changes or modifications not expressly approved by the party responsible for compliance could void the user's authority to operate the equipment.

This device complies with Part 15 of the FCC Rules. Operation is subject to the following conditions:

- 1) This device may not cause harmful interference, and
- 2) This device must accept any interference received, including interference that may cause degraded operation.