

Appendix II

Internal Photographs

This image shows the internal components of a Pioneer 3 mobile robot. The robot's black plastic top deck is removed, revealing the internal structure. A green printed circuit board (PCB) is visible, featuring various electronic components, including a microcontroller, memory modules, and connectors. A motor is mounted on the right side of the PCB. The robot is placed on a blue surface, and a ruler is visible at the bottom for scale.

A photograph of a disassembled Pioneer 3-DX mobile robot. The components are laid out on a blue surface. The main body shell is split into several pieces, including a large circular base and a smaller top section. The internal electronics, including the mainboard, battery, and motor drivers, are visible. Various sensors and actuators, such as the camera, range finder, and wheels, are also shown. A ruler is visible along the bottom edge of the image.

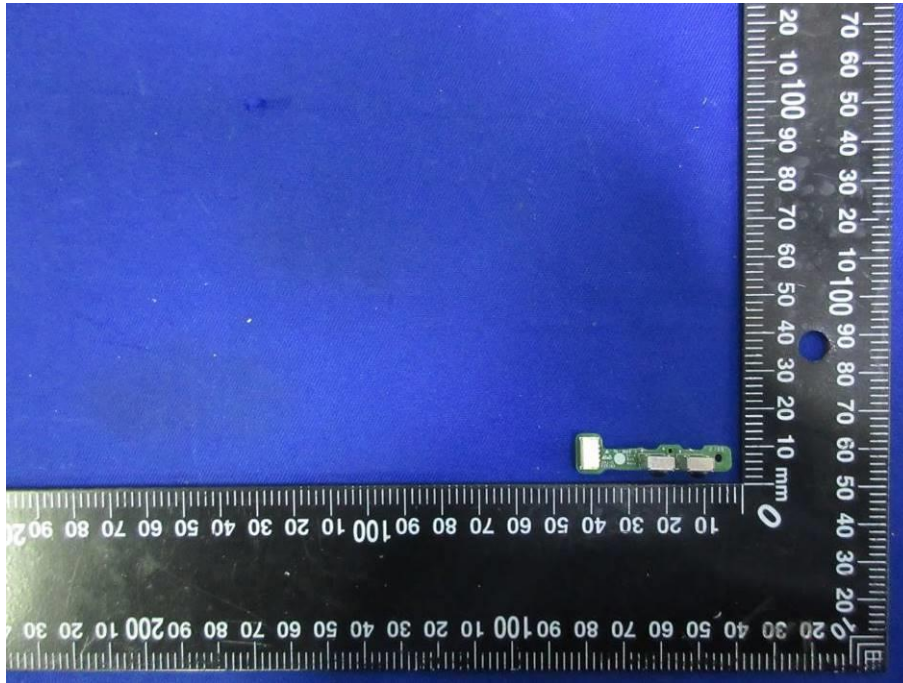
Internal View of EUT-2



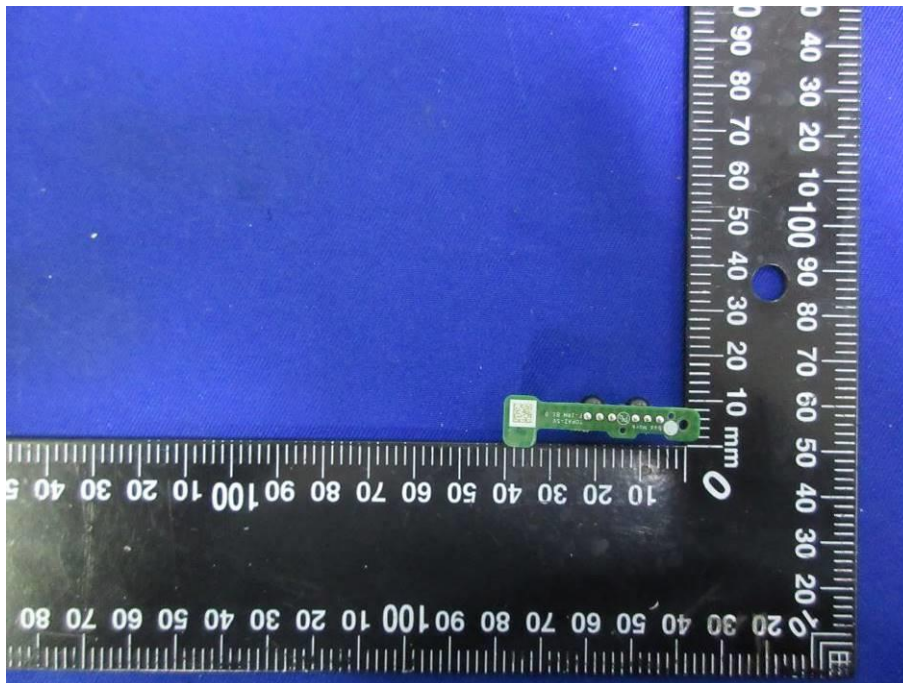
Internal View of EUT-3



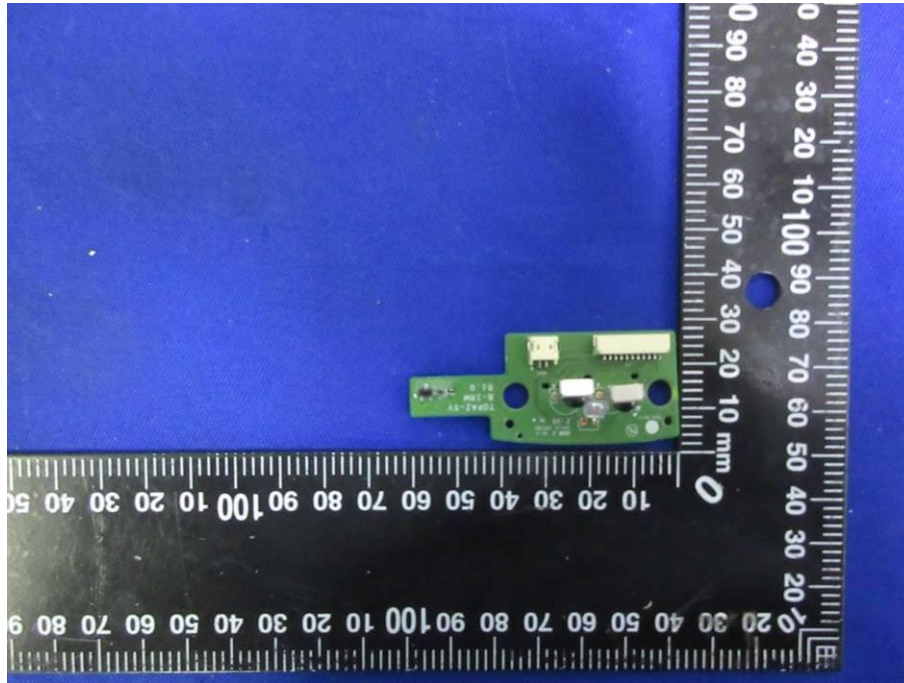
Internal View of EUT-4



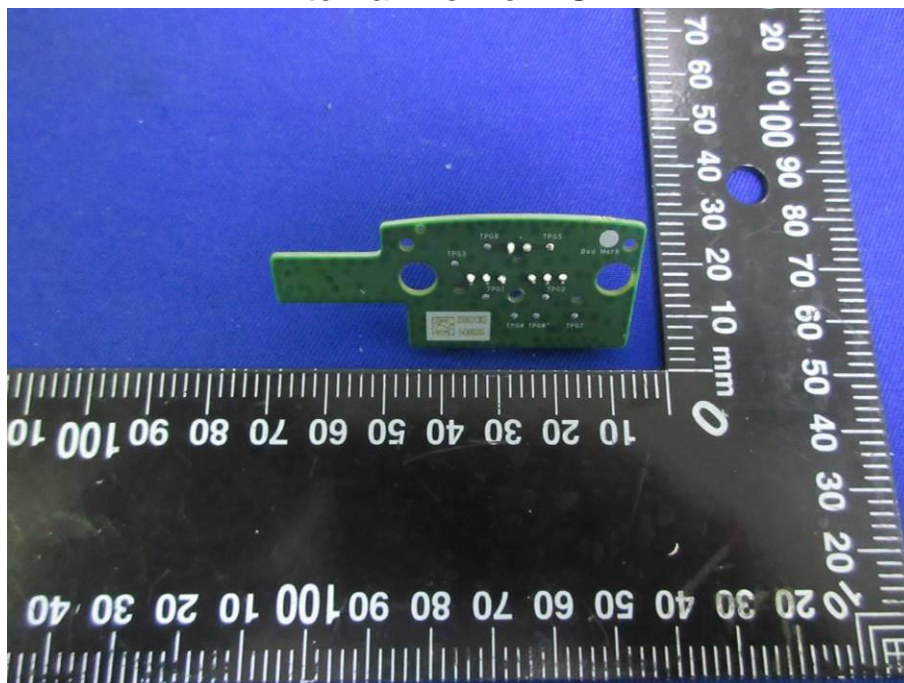
Internal View of EUT-5



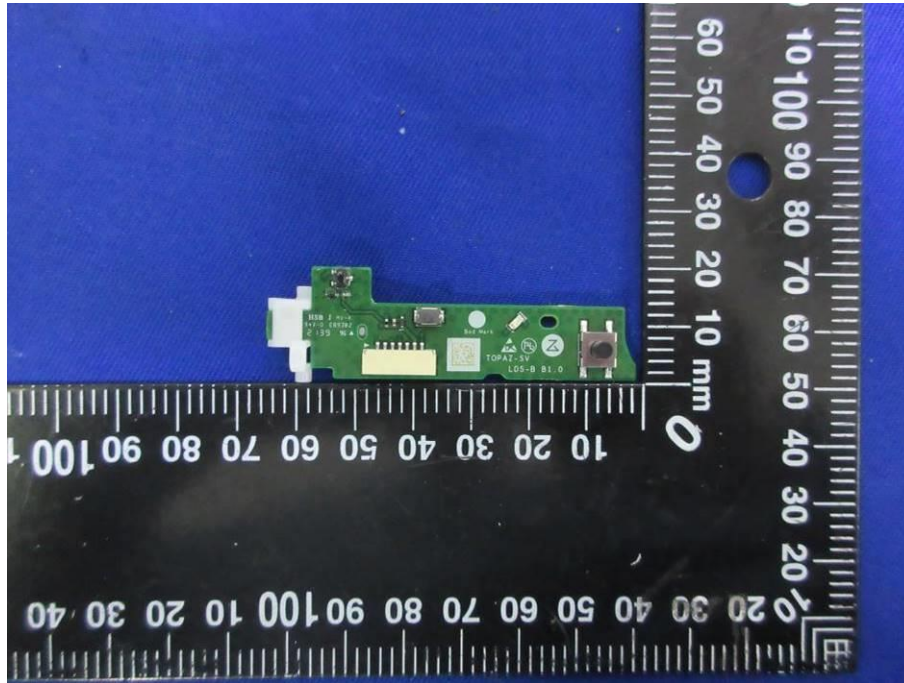
Internal View of EUT-6



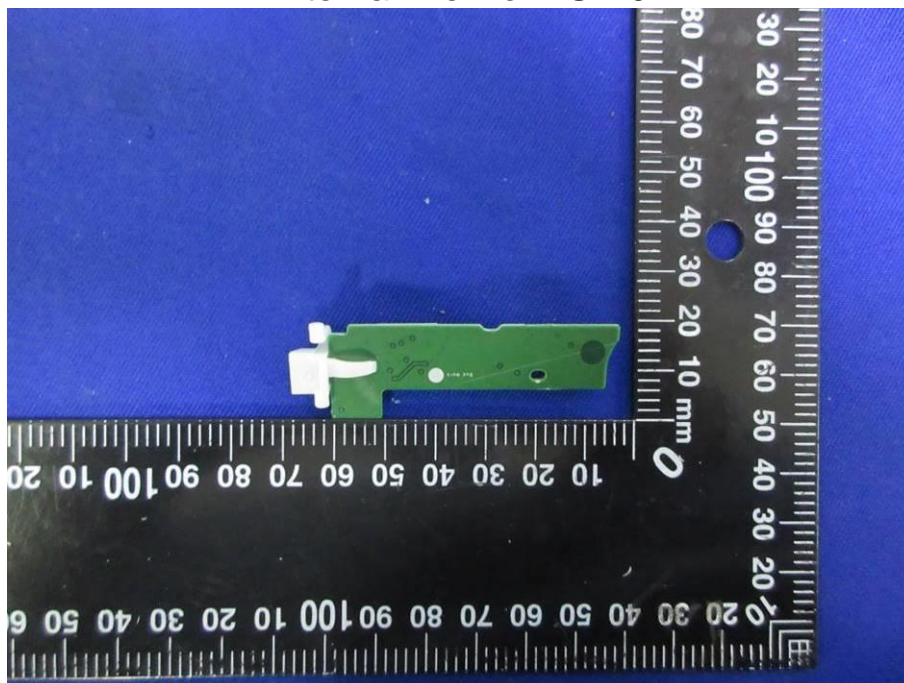
Internal View of EUT-7



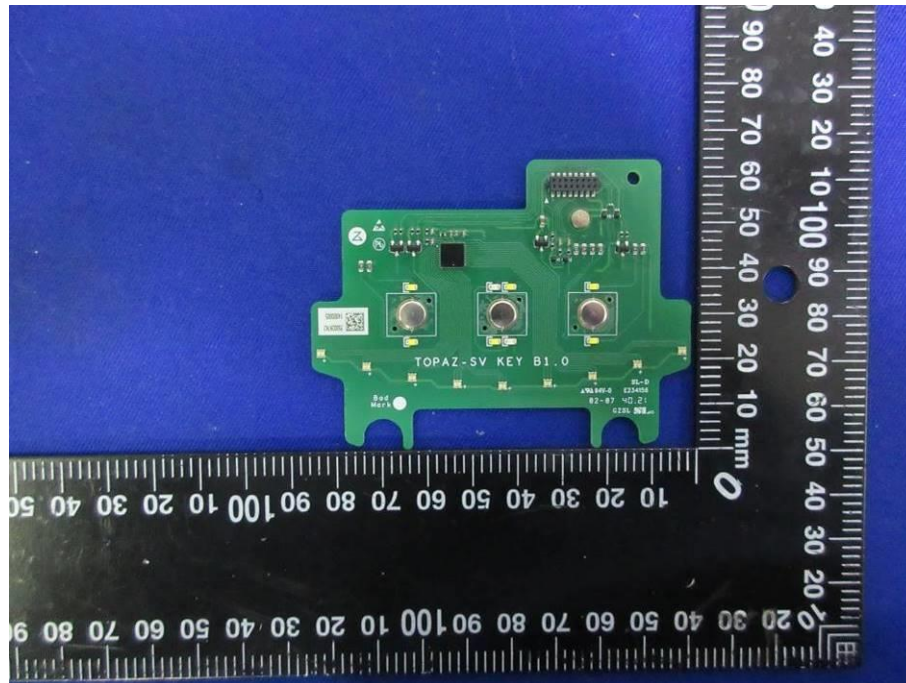
Internal View of EUT-8



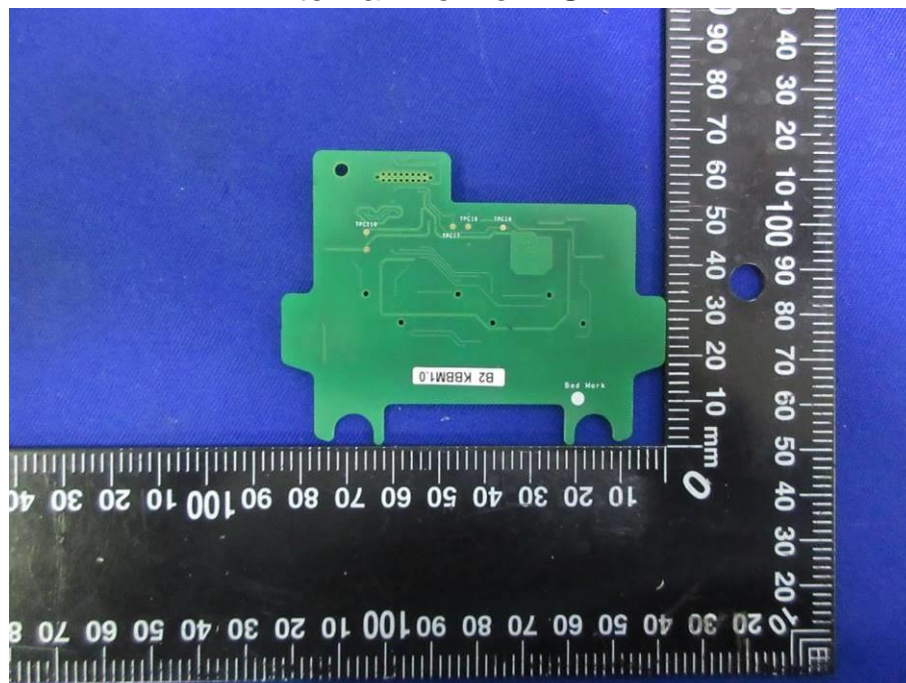
Internal View of EUT-9



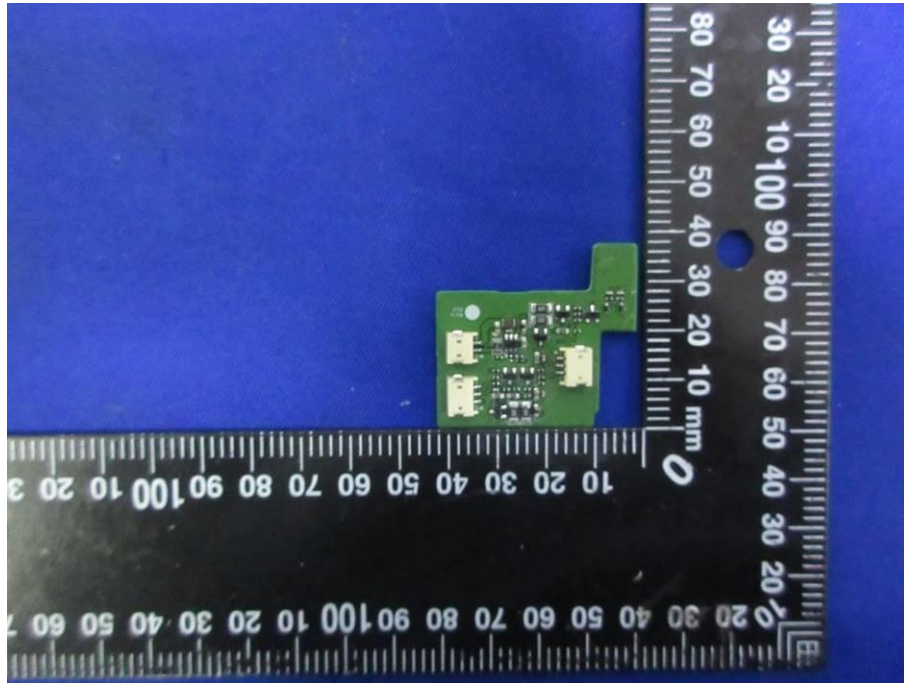
Internal View of EUT-10



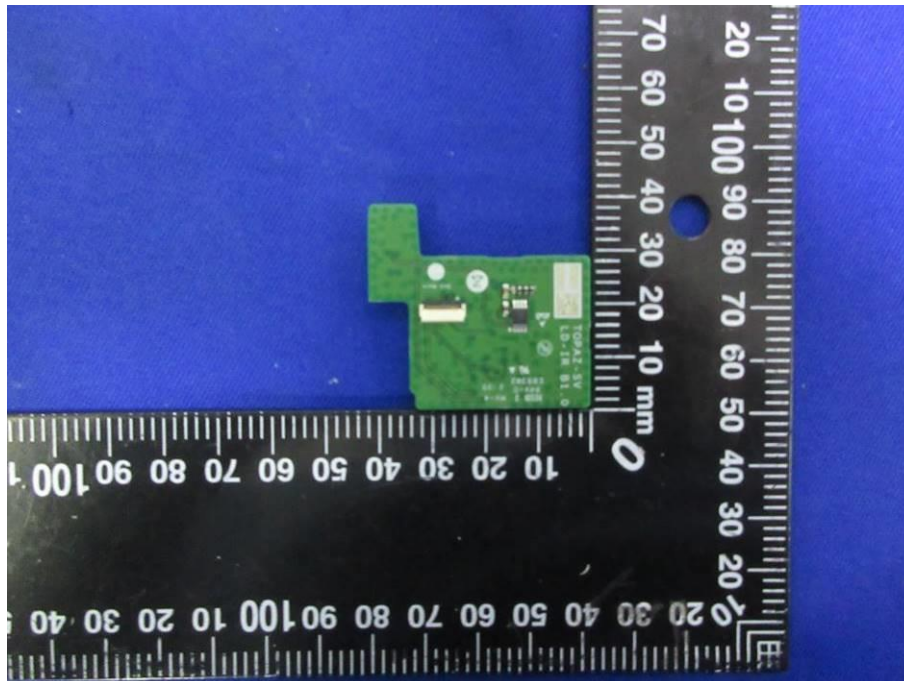
Internal View of EUT-11



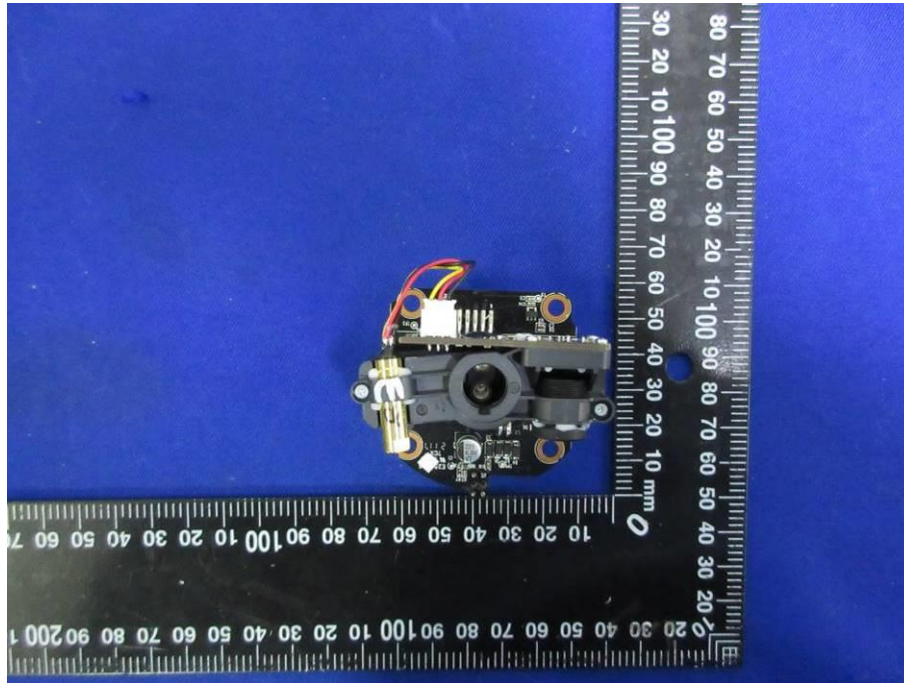
Internal View of EUT-12



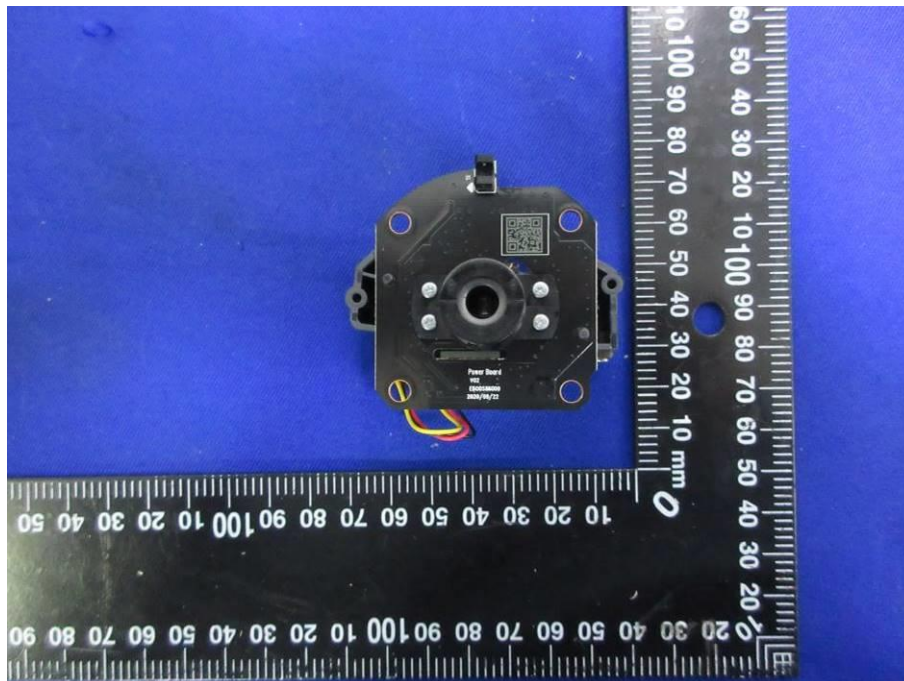
Internal View of EUT-13



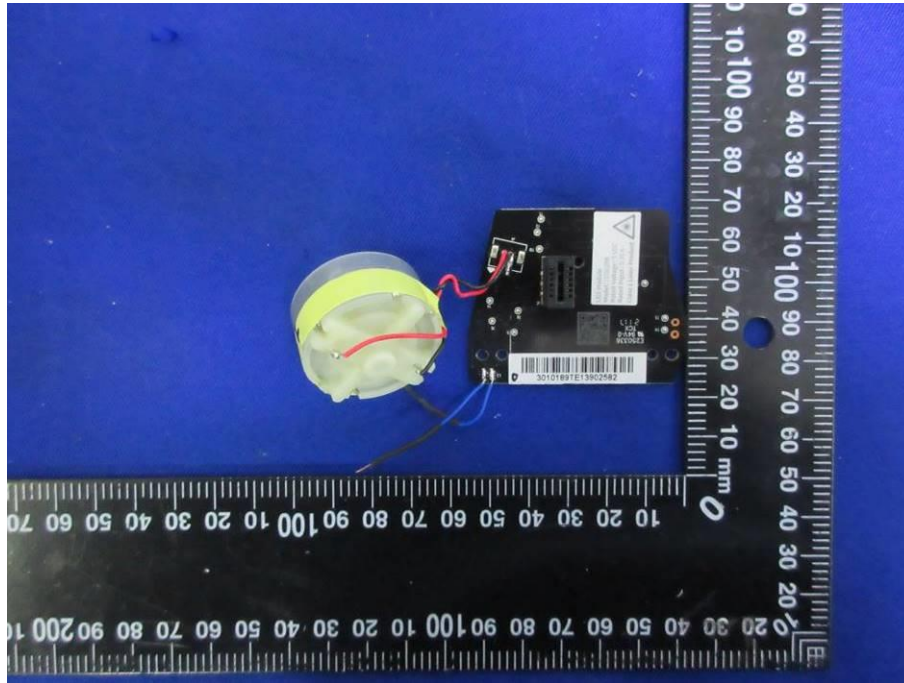
Internal View of EUT-14



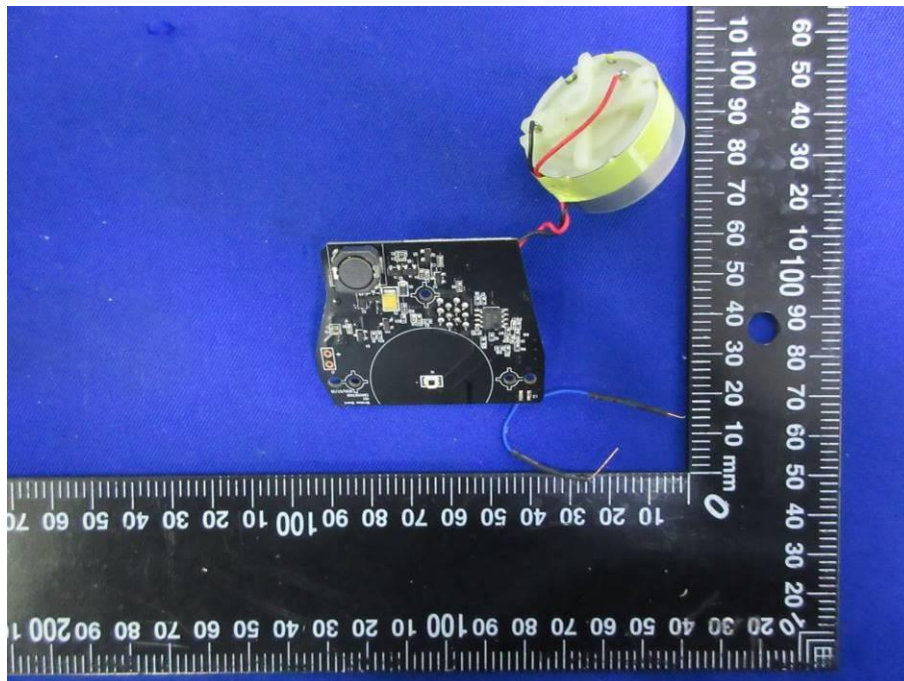
Internal View of EUT-15



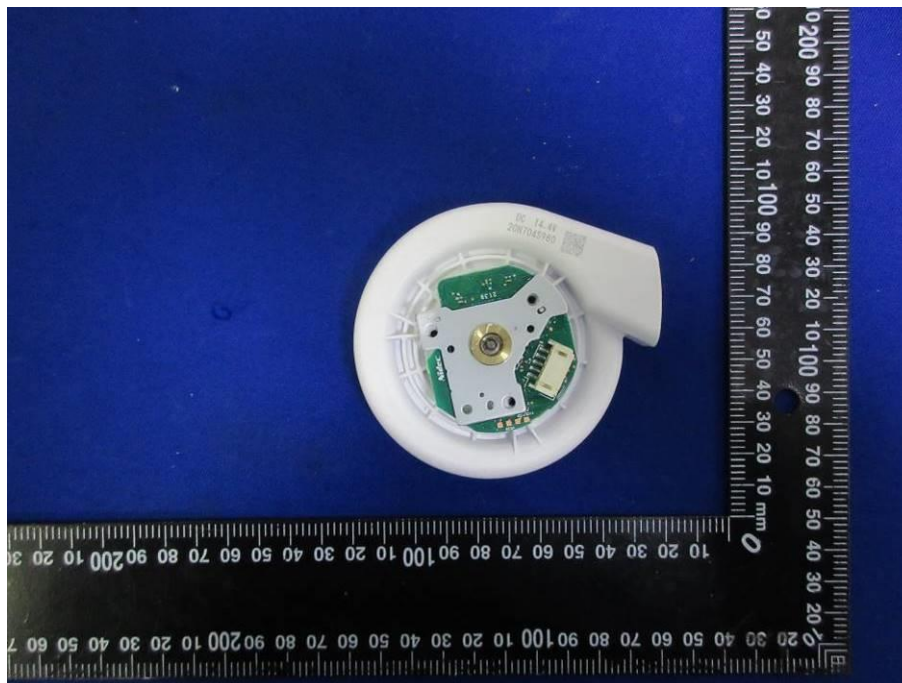
Internal View of EUT-16



Internal View of EUT-17



Internal View of EUT-18



Antenna and RF Module Location-WLAN

