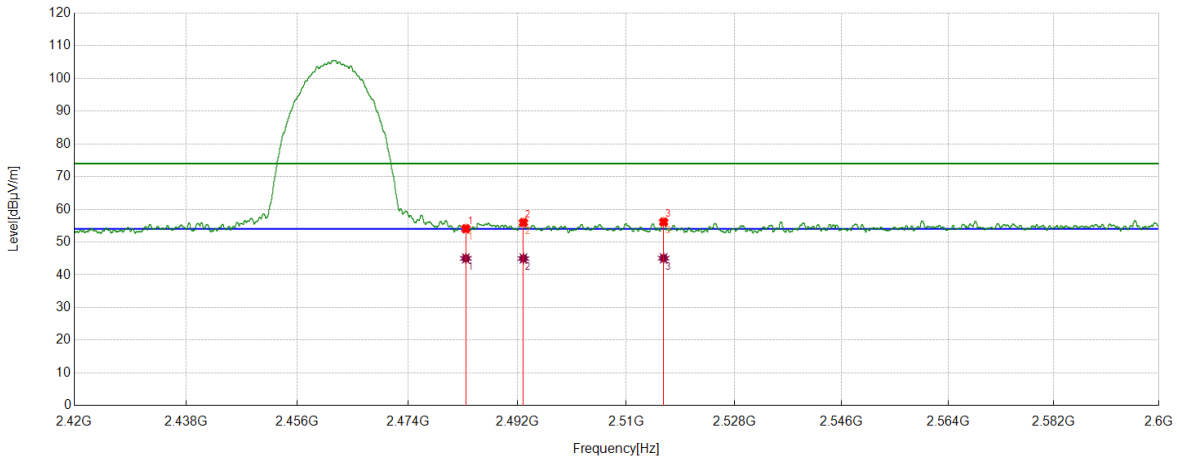


Test Mode	Channel	Polarization	Verdict
11B	HCH	Vertical	PASS



PK Result:

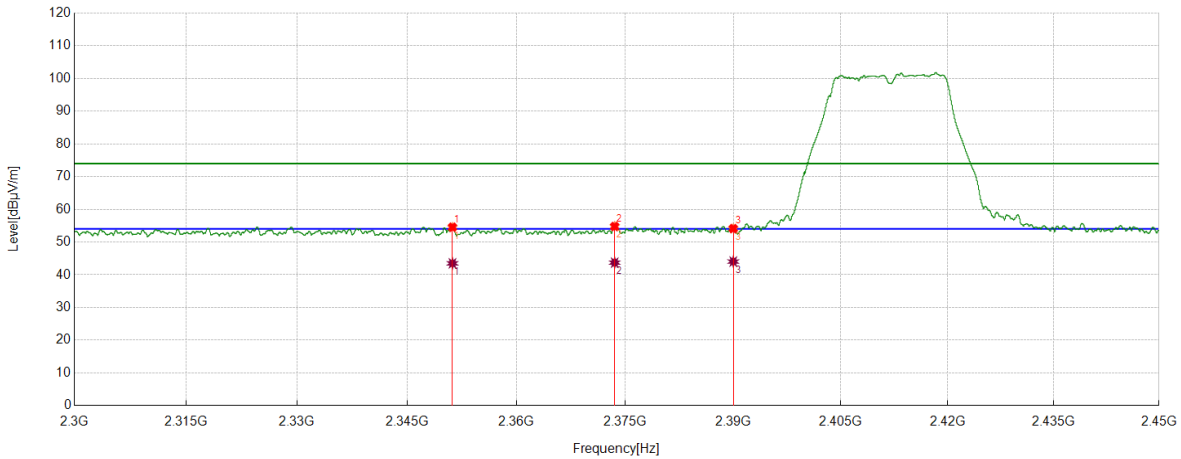
No.	Frequency	Reading Level	Correct Factor	Result	Limit	Margin	Remark
	[MHz]	[dBuV]	[dB/m]	[dBuV/m]	[dBuV/m]	[dB]	
1	2483.5000	39.81	14.25	54.06	74.00	-19.94	Vertical
2	2492.9766	41.63	14.35	55.98	74.00	-18.02	Vertical
3	2516.1995	41.63	14.51	56.14	74.00	-17.86	Vertical

AV Result:

No.	Frequency	Reading Level	Correct Factor	Result	Limit	Margin	Remark
	[MHz]	[dBuV]	[dB/m]	[dBuV/m]	[dBuV/m]	[dB]	
1	2483.5000	30.75	14.25	45.00	54.00	-9.00	Vertical
2	2492.9766	30.62	14.35	44.97	54.00	-9.03	Vertical
3	2516.1995	30.54	14.51	45.05	54.00	-8.95	Vertical

- Note: 1. Peak detector: RBW: 1 MHz, VBW: 3 MHz.
 2. Average detector: RBW: 1 MHz, VBW: 1/T MHz(refer to clause 7.1.).
 3. Measurement = Reading Level + Correct Factor,
 Correct Factor = Antenna Factor + Loss (Cable + Attenuator) – Amplifier Gain.
 4. Only the worst case emission was recorded, if it complies with the limit, the other emissions deemed to comply with the limit.

Test Mode	Channel	Polarization	Verdict
11G	LCH	Horizontal	PASS



PK Result:

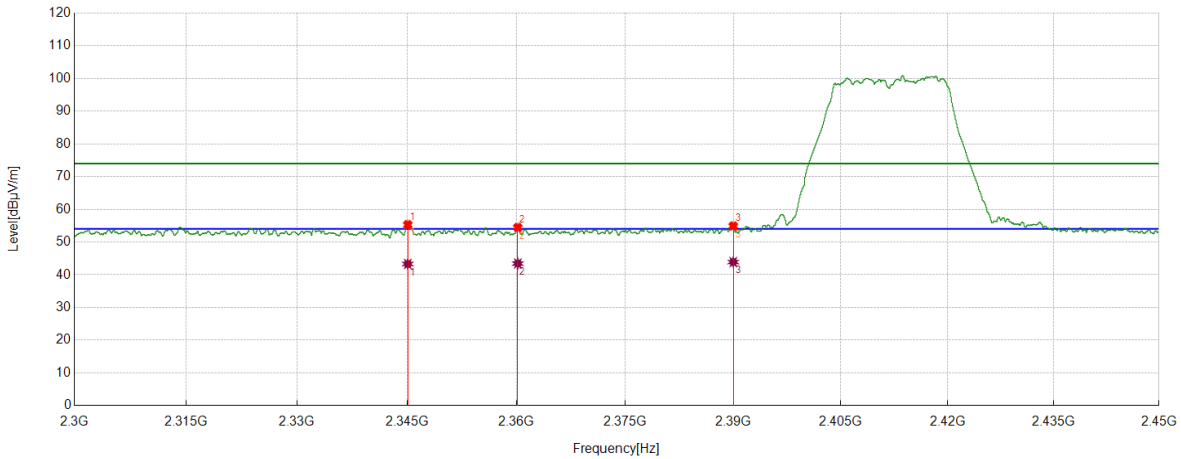
No.	Frequency	Reading Level	Correct Factor	Result	Limit	Margin	Remark
	[MHz]	[dBuV]	[dB/m]	[dBuV/m]	[dBuV/m]	[dB]	
1	2351.2314	41.01	13.53	54.54	74.00	-19.46	Horizontal
2	2373.5467	41.21	13.56	54.77	74.00	-19.23	Horizontal
3	2390.0000	40.64	13.48	54.12	74.00	-19.88	Horizontal

AV Result:

No.	Frequency	Reading Level	Correct Factor	Result	Limit	Margin	Remark
	[MHz]	[dBuV]	[dB/m]	[dBuV/m]	[dBuV/m]	[dB]	
1	2351.2314	29.97	13.53	43.50	54.00	-10.50	Horizontal
2	2373.5467	30.15	13.56	43.71	54.00	-10.29	Horizontal
3	2390.0000	30.56	13.48	44.04	54.00	-9.96	Horizontal

- Note: 1. Peak detector: RBW: 1 MHz, VBW: 3 MHz.
 2. Average detector: RBW: 1 MHz, VBW: 1/T MHz(refer to clause 7.1.).
 3. Measurement = Reading Level + Correct Factor,
 Correct Factor = Antenna Factor + Loss (Cable + Attenuator) – Amplifier Gain.
 4. Only the worst case emission was recorded, if it complies with the limit, the other emissions deemed to comply with the limit.

Test Mode	Channel	Polarization	Verdict
11G	LCH	Vertical	PASS



PK Result:

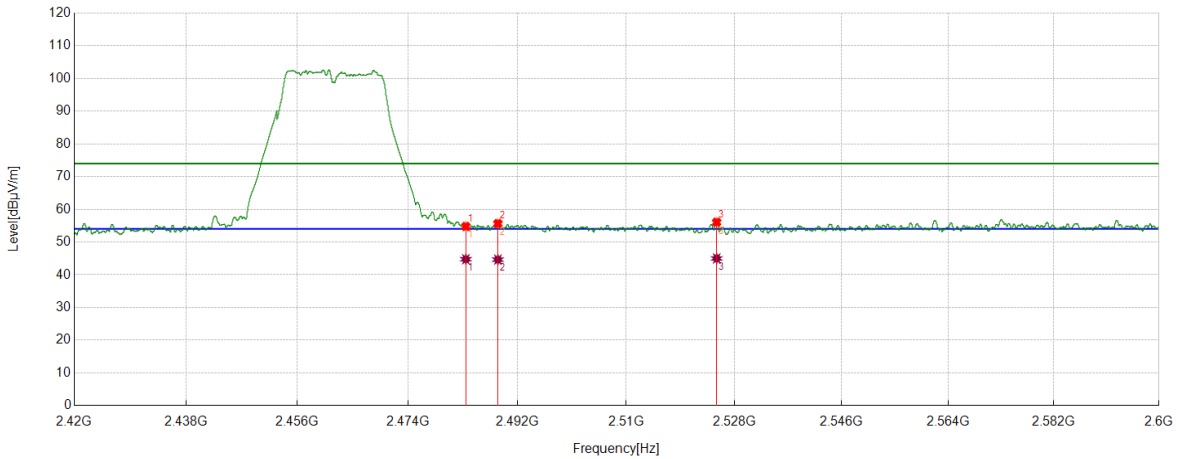
No.	Frequency	Reading Level	Correct Factor	Result	Limit	Margin	Remark
	[MHz]	[dBuV]	[dB/m]	[dBuV/m]	[dBuV/m]	[dB]	
1	2345.1181	41.81	13.49	55.30	74.00	-18.70	Vertical
2	2360.195	40.99	13.46	54.45	74.00	-19.55	Vertical
3	2390.0000	41.44	13.48	54.92	74.00	-19.08	Vertical

AV Result:

No.	Frequency	Reading Level	Correct Factor	Result	Limit	Margin	Remark
	[MHz]	[dBuV]	[dB/m]	[dBuV/m]	[dBuV/m]	[dB]	
1	2345.1181	29.81	13.49	43.30	54.00	-10.70	Vertical
2	2360.195	29.97	13.46	43.43	54.00	-10.57	Vertical
3	2390.0000	30.41	13.48	43.89	54.00	-10.11	Vertical

- Note: 1. Peak detector: RBW: 1 MHz, VBW: 3 MHz.
 2. Average detector: RBW: 1 MHz, VBW: 1/T MHz(refer to clause 7.1.).
 3. Measurement = Reading Level + Correct Factor,
 Correct Factor = Antenna Factor + Loss (Cable + Attenuator) – Amplifier Gain.
 4. Only the worst case emission was recorded, if it complies with the limit, the other emissions deemed to comply with the limit.

Test Mode	Channel	Polarization	Verdict
11G	HCH	Horizontal	PASS



PK Result:

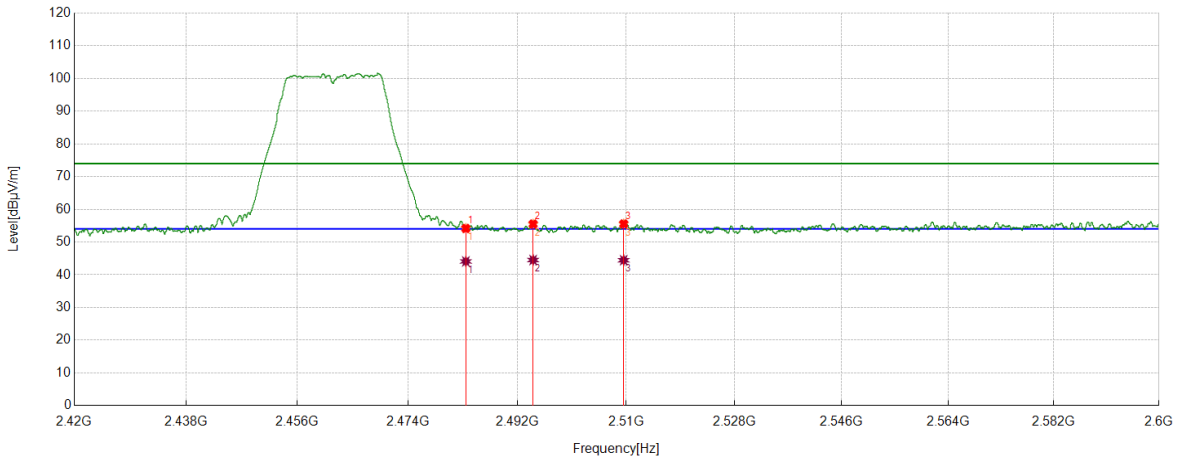
No.	Frequency	Reading Level	Correct Factor	Result	Limit	Margin	Remark
	[MHz]	[dBuV]	[dB/m]	[dBuV/m]	[dBuV/m]	[dB]	
1	2483.5000	40.52	14.25	54.77	74.00	-19.23	Horizontal
2	2488.7686	41.32	14.35	55.67	74.00	-18.33	Horizontal
3	2525.0431	41.59	14.49	56.08	74.00	-17.92	Horizontal

AV Result:

No.	Frequency	Reading Level	Correct Factor	Result	Limit	Margin	Remark
	[MHz]	[dBuV]	[dB/m]	[dBuV/m]	[dBuV/m]	[dB]	
1	2483.5000	30.50	14.25	44.75	54.00	-9.25	Horizontal
2	2488.7686	30.28	14.35	44.63	54.00	-9.37	Horizontal
3	2525.0431	30.50	14.49	44.99	54.00	-9.01	Horizontal

- Note: 1. Peak detector: RBW: 1 MHz, VBW: 3 MHz.
 2. Average detector: RBW: 1 MHz, VBW: 1/T MHz(refer to clause 7.1.).
 3. Measurement = Reading Level + Correct Factor,
 Correct Factor = Antenna Factor + Loss (Cable + Attenuator) – Amplifier Gain.
 4. Only the worst case emission was recorded, if it complies with the limit, the other emissions deemed to comply with the limit.

Test Mode	Channel	Polarization	Verdict
11G	HCH	Vertical	PASS



PK Result:

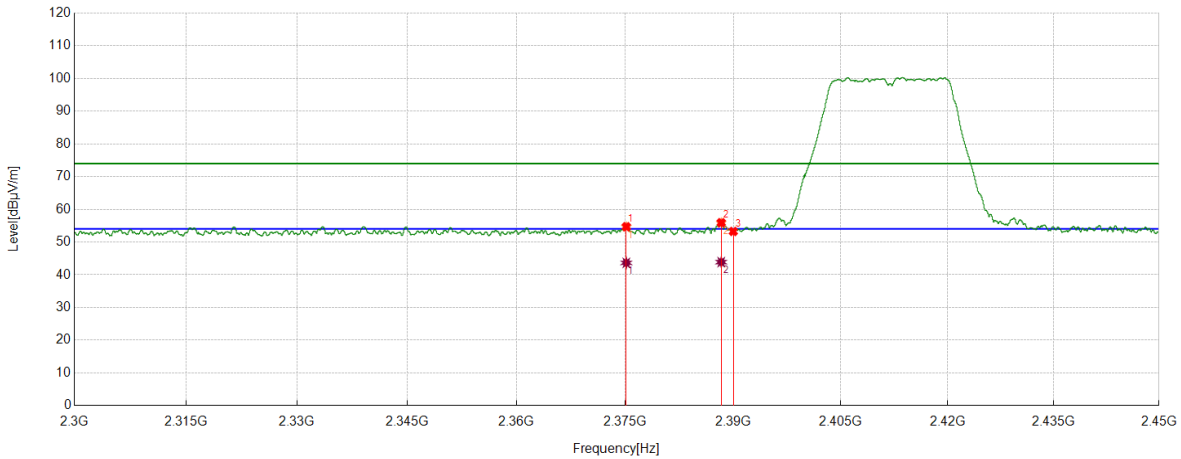
No.	Frequency	Reading Level	Correct Factor	Result	Limit	Margin	Remark
	[MHz]	[dBuV]	[dB/m]	[dBuV/m]	[dBuV/m]	[dB]	
1	2483.5000	39.91	14.25	54.16	74.00	-19.84	Vertical
2	2494.5743	41.18	14.33	55.51	74.00	-18.49	Vertical
3	2509.5612	41.08	14.46	55.54	74.00	-18.46	Vertical

AV Result:

No.	Frequency	Reading Level	Correct Factor	Result	Limit	Margin	Remark
	[MHz]	[dBuV]	[dB/m]	[dBuV/m]	[dBuV/m]	[dB]	
1	2483.5000	29.83	14.25	44.08	54.00	-9.92	Vertical
2	2494.5743	30.18	14.33	44.51	54.00	-9.49	Vertical
3	2509.5612	29.99	14.46	44.45	54.00	-9.55	Vertical

- Note: 1. Peak detector: RBW: 1 MHz, VBW: 3 MHz.
 2. Average detector: RBW: 1 MHz, VBW: 1/T MHz(refer to clause 7.1.).
 3. Measurement = Reading Level + Correct Factor,
 Correct Factor = Antenna Factor + Loss (Cable + Attenuator) – Amplifier Gain.
 4. Only the worst case emission was recorded, if it complies with the limit, the other emissions deemed to comply with the limit.

Test Mode	Channel	Polarization	Verdict
11N HT20	LCH	Horizontal	PASS



PK Result:

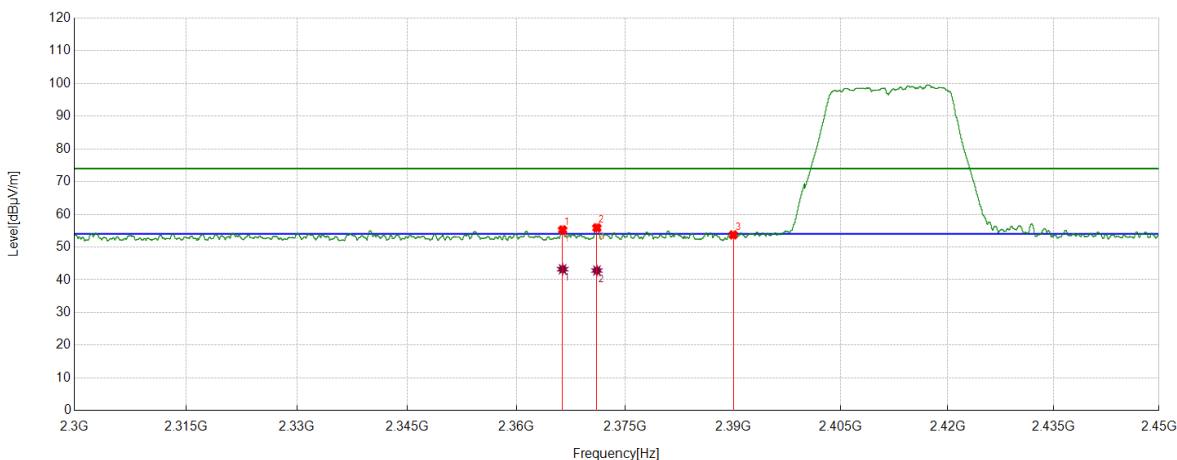
No.	Frequency	Reading Level	Correct Factor	Result	Limit	Margin	Remark
	[MHz]	[dBuV]	[dB/m]	[dBuV/m]	[dBuV/m]	[dB]	
1	2375.1594	41.10	13.58	54.68	74.00	-19.32	Horizontal
2	2388.3235	42.41	13.50	55.91	74.00	-18.09	Horizontal
3	2390.0000	39.76	13.48	53.24	74.00	-20.76	Horizontal

AV Result:

No.	Frequency	Reading Level	Correct Factor	Result	Limit	Margin	Remark
	[MHz]	[dBuV]	[dB/m]	[dBuV/m]	[dBuV/m]	[dB]	
1	2375.1594	30.06	13.58	43.64	54.00	-10.36	Horizontal
2	2388.3235	30.37	13.50	43.87	54.00	-10.13	Horizontal

- Note: 1. Peak detector: RBW: 1 MHz, VBW: 3 MHz.
 2. Average detector: RBW: 1 MHz, VBW: 1/T MHz(refer to clause 7.1.).
 3. Measurement = Reading Level + Correct Factor,
 Correct Factor = Antenna Factor + Loss (Cable + Attenuator) – Amplifier Gain.
 4. Only the worst case emission was recorded, if it complies with the limit, the other emissions deemed to comply with the limit.

Test Mode	Channel	Polarization	Verdict
11N HT20	LCH	Vertical	PASS



PK Result:

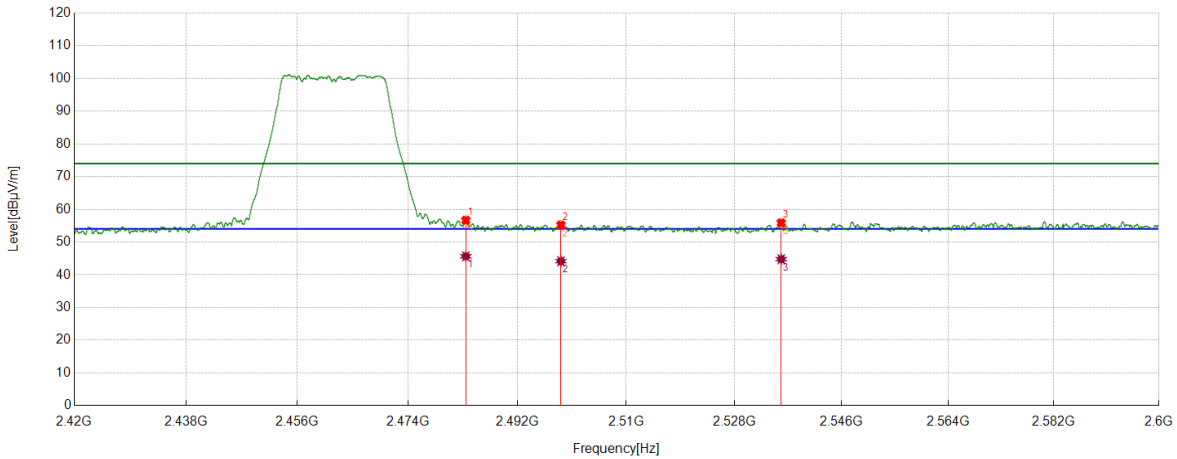
No.	Frequency	Reading Level	Correct Factor	Result	Limit	Margin	Remark
	[MHz]	[dBuV]	[dB/m]	[dBuV/m]	[dBuV/m]	[dB]	
1	2366.3645	41.72	13.52	55.24	74.00	-18.76	Vertical
2	2371.0901	42.32	13.56	55.88	74.00	-18.12	Vertical
3	2390.0000	40.25	13.48	53.73	74.00	-20.27	Vertical

AV Result:

No.	Frequency	Reading Level	Correct Factor	Result	Limit	Margin	Remark
	[MHz]	[dBuV]	[dB/m]	[dBuV/m]	[dBuV/m]	[dB]	
1	2366.3645	29.71	13.52	43.23	54.00	-10.77	Vertical
2	2371.0901	29.26	13.56	42.82	54.00	-11.18	Vertical

- Note: 1. Peak detector: RBW: 1 MHz, VBW: 3 MHz.
 2. Average detector: RBW: 1 MHz, VBW: 1/T MHz(refer to clause 7.1.).
 3. Measurement = Reading Level + Correct Factor,
 Correct Factor = Antenna Factor + Loss (Cable + Attenuator) – Amplifier Gain.
 4. Only the worst case emission was recorded, if it complies with the limit, the other emissions deemed to comply with the limit.

Test Mode	Channel	Polarization	Verdict
11N HT20	HCH	Horizontal	PASS



PK Result:

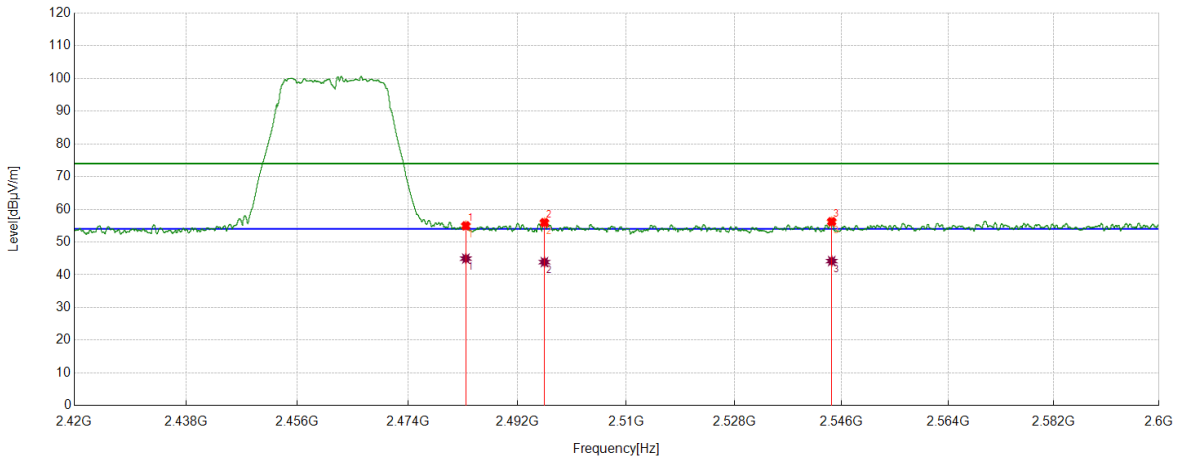
No.	Frequency	Reading Level	Correct Factor	Result	Limit	Margin	Remark
	[MHz]	[dBuV]	[dB/m]	[dBuV/m]	[dBuV/m]	[dB]	
1	2483.5000	42.40	14.25	56.65	74.00	-17.35	Horizontal
2	2499.1649	40.93	14.28	55.21	74.00	-18.79	Horizontal
3	2535.8445	41.35	14.51	55.86	74.00	-18.14	Horizontal

AV Result:

No.	Frequency	Reading Level	Correct Factor	Result	Limit	Margin	Remark
	[MHz]	[dBuV]	[dB/m]	[dBuV/m]	[dBuV/m]	[dB]	
1	2483.5000	31.39	14.25	45.64	54.00	-8.36	Horizontal
2	2499.1649	29.87	14.28	44.15	54.00	-9.85	Horizontal
3	2535.8445	30.27	14.51	44.78	54.00	-9.22	Horizontal

- Note: 1. Peak detector: RBW: 1 MHz, VBW: 3 MHz.
 2. Average detector: RBW: 1 MHz, VBW: 1/T MHz(refer to clause 7.1.).
 3. Measurement = Reading Level + Correct Factor,
 Correct Factor = Antenna Factor + Loss (Cable + Attenuator) – Amplifier Gain.
 4. Only the worst case emission was recorded, if it complies with the limit, the other emissions deemed to comply with the limit.

Test Mode	Channel	Polarization	Verdict
11N HT20	HCH	Vertical	PASS



PK Result:

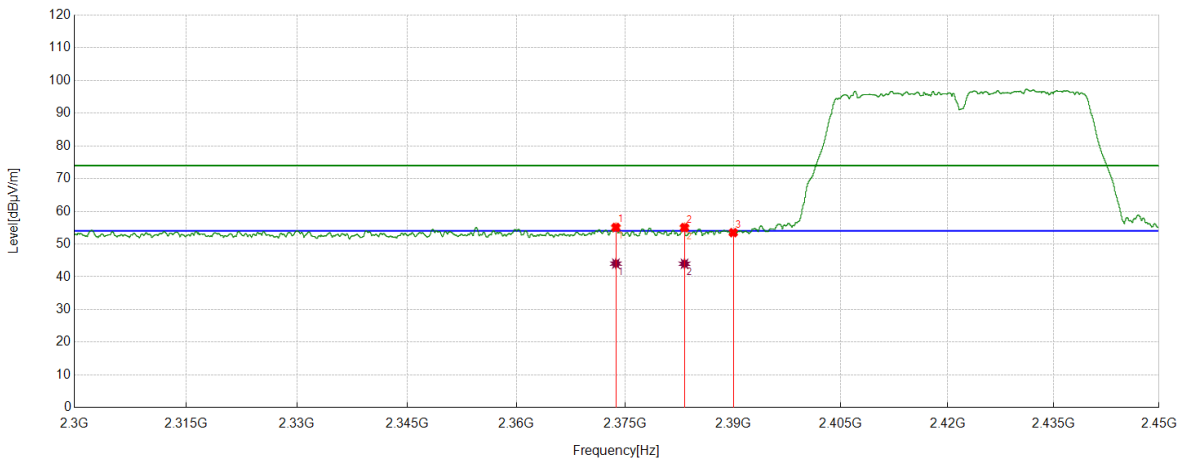
No.	Frequency	Reading Level	Correct Factor	Result	Limit	Margin	Remark
	[MHz]	[dBuV]	[dB/m]	[dBuV/m]	[dBuV/m]	[dB]	
1	2483.5000	40.71	14.25	54.96	74.00	-19.04	Vertical
2	2496.4421	41.63	14.31	55.94	74.00	-18.06	Vertical
3	2544.328	41.64	14.59	56.23	74.00	-17.77	Vertical

AV Result:

No.	Frequency	Reading Level	Correct Factor	Result	Limit	Margin	Remark
	[MHz]	[dBuV]	[dB/m]	[dBuV/m]	[dBuV/m]	[dB]	
1	2483.5000	30.70	14.25	44.95	54.00	-9.05	Vertical
2	2496.4421	29.56	14.31	43.87	54.00	-10.13	Vertical
3	2544.328	29.60	14.59	44.19	54.00	-9.81	Vertical

- Note: 1. Peak detector: RBW: 1 MHz, VBW: 3 MHz.
 2. Average detector: RBW: 1 MHz, VBW: 1/T MHz(refer to clause 7.1.).
 3. Measurement = Reading Level + Correct Factor,
 Correct Factor = Antenna Factor + Loss (Cable + Attenuator) – Amplifier Gain.
 4. Only the worst case emission was recorded, if it complies with the limit, the other emissions deemed to comply with the limit.

Test Mode	Channel	Polarization	Verdict
11N HT40	LCH	Horizontal	PASS



PK Result:

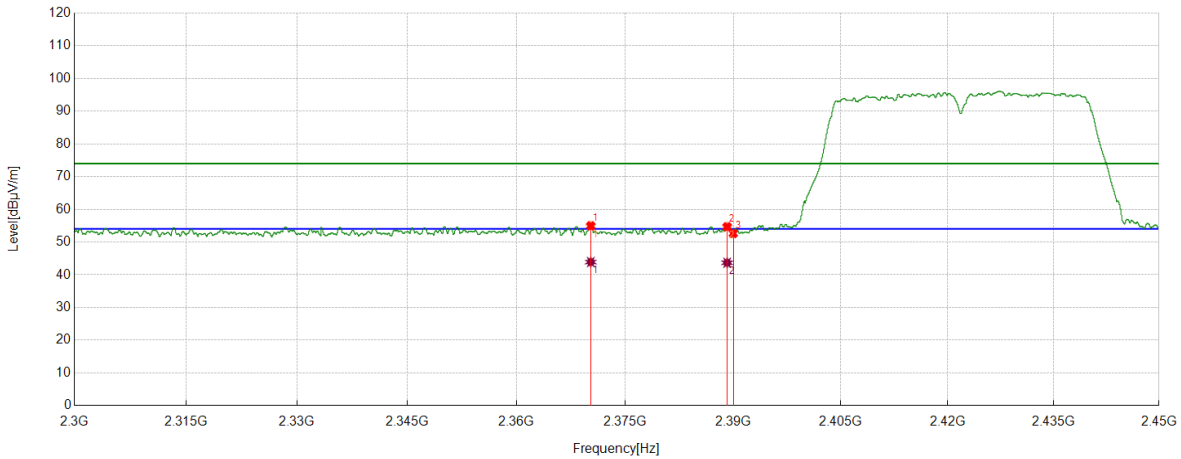
No.	Frequency	Reading Level	Correct Factor	Result	Limit	Margin	Remark
	[MHz]	[dBuV]	[dB/m]	[dBuV/m]	[dBuV/m]	[dB]	
1	2373.7155	41.51	13.57	55.08	74.00	-18.92	Horizontal
2	2383.2229	41.48	13.56	55.04	74.00	-18.96	Horizontal
3	2390.0000	40.01	13.48	53.49	74.00	-20.51	Horizontal

AV Result:

No.	Frequency	Reading Level	Correct Factor	Result	Limit	Margin	Remark
	[MHz]	[dBuV]	[dB/m]	[dBuV/m]	[dBuV/m]	[dB]	
1	2373.7155	30.45	13.57	44.02	54.00	-9.98	Horizontal
2	2383.2229	30.41	13.56	43.97	54.00	-10.03	Horizontal

- Note: 1. Peak detector: RBW: 1 MHz, VBW: 3 MHz.
 2. Average detector: RBW: 1 MHz, VBW: 1/T MHz(refer to clause 7.1.).
 3. Measurement = Reading Level + Correct Factor,
 Correct Factor = Antenna Factor + Loss (Cable + Attenuator) – Amplifier Gain.
 4. Only the worst case emission was recorded, if it complies with the limit, the other emissions deemed to comply with the limit.

Test Mode	Channel	Polarization	Verdict
11N HT40	LCH	Vertical	PASS



PK Result:

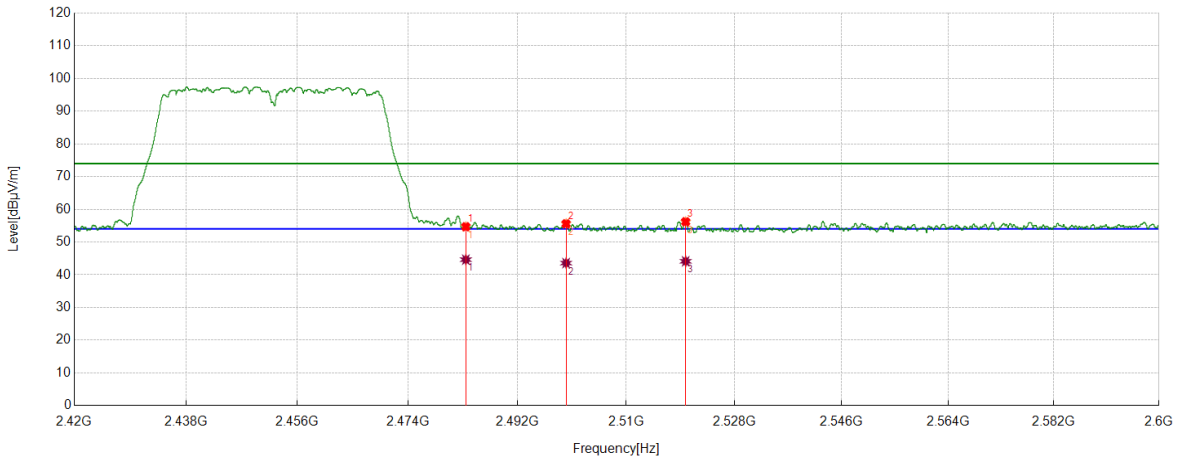
No.	Frequency	Reading Level	Correct Factor	Result	Limit	Margin	Remark
	[MHz]	[dBuV]	[dB/m]	[dBuV/m]	[dBuV/m]	[dB]	
1	2370.2463	41.41	13.55	54.96	74.00	-19.04	Vertical
2	2389.1486	41.19	13.49	54.68	74.00	-19.32	Vertical
3	2390.0000	39.13	13.48	52.61	74.00	-21.39	Vertical

AV Result:

No.	Frequency	Reading Level	Correct Factor	Result	Limit	Margin	Remark
	[MHz]	[dBuV]	[dB/m]	[dBuV/m]	[dBuV/m]	[dB]	
1	2370.2463	30.34	13.55	43.89	54.00	-10.11	Vertical
2	2389.1486	30.18	13.49	43.67	54.00	-10.33	Vertical

- Note: 1. Peak detector: RBW: 1 MHz, VBW: 3 MHz.
 2. Average detector: RBW: 1 MHz, VBW: 1/T MHz(refer to clause 7.1.).
 3. Measurement = Reading Level + Correct Factor,
 Correct Factor = Antenna Factor + Loss (Cable + Attenuator) – Amplifier Gain.
 4. Only the worst case emission was recorded, if it complies with the limit, the other emissions deemed to comply with the limit.

Test Mode	Channel	Polarization	Verdict
11N HT40	HCH	Horizontal	PASS



PK Result:

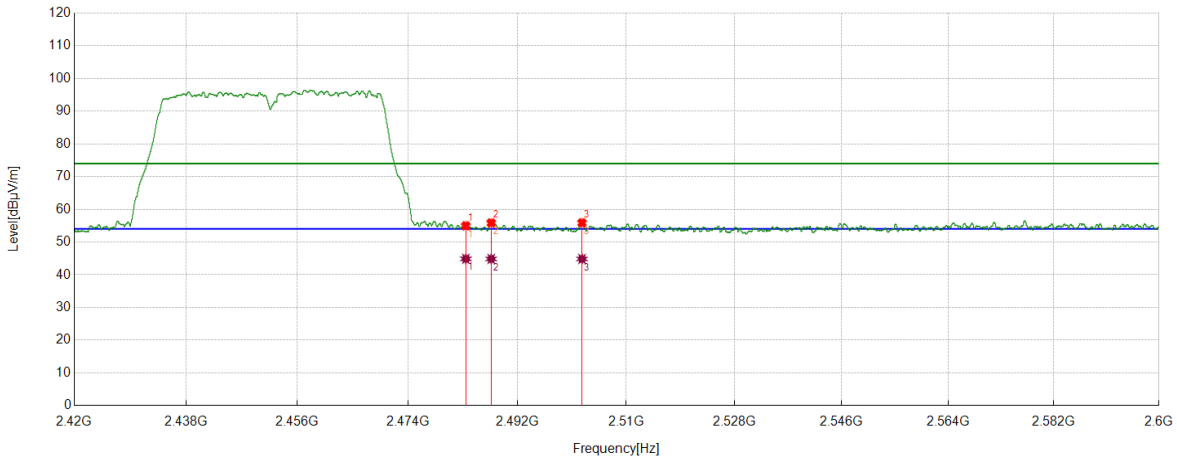
No.	Frequency	Reading Level	Correct Factor	Result	Limit	Margin	Remark
	[MHz]	[dBuV]	[dB/m]	[dBuV/m]	[dBuV/m]	[dB]	
1	2483.5000	40.43	14.25	54.68	74.00	-19.32	Horizontal
2	2500.02	41.30	14.28	55.58	74.00	-18.42	Horizontal
3	2519.8675	41.67	14.54	56.21	74.00	-17.79	Horizontal

AV Result:

No.	Frequency	Reading Level	Correct Factor	Result	Limit	Margin	Remark
	[MHz]	[dBuV]	[dB/m]	[dBuV/m]	[dBuV/m]	[dB]	
1	2483.5000	30.37	14.25	44.62	54.00	-9.38	Horizontal
2	2500.0200	29.29	14.28	43.57	54.00	-10.43	Horizontal
3	2519.8675	29.58	14.54	44.12	54.00	-9.88	Horizontal

- Note: 1. Peak detector: RBW: 1 MHz, VBW: 3 MHz.
 2. Average detector: RBW: 1 MHz, VBW: 1/T MHz(refer to clause 7.1.).
 3. Measurement = Reading Level + Correct Factor,
 Correct Factor = Antenna Factor + Loss (Cable + Attenuator) – Amplifier Gain.
 4. Only the worst case emission was recorded, if it complies with the limit, the other emissions deemed to comply with the limit.

Test Mode	Channel	Polarization	Verdict
11N HT40	HCH	Vertical	PASS



PK Result:

No.	Frequency	Reading Level	Correct Factor	Result	Limit	Margin	Remark
	[MHz]	[dBuV]	[dB/m]	[dBuV/m]	[dBuV/m]	[dB]	
1	2483.5000	40.72	14.25	54.97	74.00	-19.03	Vertical
2	2487.666	41.52	14.33	55.85	74.00	-18.15	Vertical
3	2502.6528	41.53	14.34	55.87	74.00	-18.13	Vertical

AV Result:

No.	Frequency	Reading Level	Correct Factor	Result	Limit	Margin	Remark
	[MHz]	[dBuV]	[dB/m]	[dBuV/m]	[dBuV/m]	[dB]	
1	2483.5000	30.63	14.25	44.88	54.00	-9.12	Vertical
2	2487.6660	30.51	14.33	44.84	54.00	-9.16	Vertical
3	2502.6528	30.50	14.34	44.84	54.00	-9.16	Vertical

- Note: 1. Peak detector: RBW: 1 MHz, VBW: 3 MHz.
 2. Average detector: RBW: 1 MHz, VBW: 1/T MHz(refer to clause 7.1.).
 3. Measurement = Reading Level + Correct Factor,
 Correct Factor = Antenna Factor + Loss (Cable + Attenuator) – Amplifier Gain.
 4. Only the worst case emission was recorded, if it complies with the limit, the other emissions deemed to comply with the limit.

8.4. SPURIOUS EMISSIONS

TEST RESULTS TABLE

1) For 1GHz~18GHz

Test Mode	Channel	Puw(dBm)	Verdict
11B	LCH	<Limit	PASS
	MCH	<Limit	PASS
	HCH	<Limit	PASS
11G	LCH	<Limit	PASS
	MCH	<Limit	PASS
	HCH	<Limit	PASS
11N HT20	LCH	<Limit	PASS
	MCH	<Limit	PASS
	HCH	<Limit	PASS
11N HT40	LCH	<Limit	PASS
	MCH	<Limit	PASS
	HCH	<Limit	PASS

2) For 9kHz~30MHz

Test Mode	Channel	Puw(dBm)	Verdict
11B	LCH	<Limit	PASS

Remark:

1) Through pre-testing all the test modes and test channels, but only the data of the worst case is included in this test report.

3) For 30MHz~1GHz

Test Mode	Channel	Puw(dBm)	Verdict
11B	LCH	<Limit	PASS

Remark:

1) Through pre-testing all the test modes and test channels, but only the data of the worst case is included in this test report.

4) For 18GHz~26.5GHz

Test Mode	Channel	Puw(dBm)	Verdict
11B	LCH	<Limit	PASS

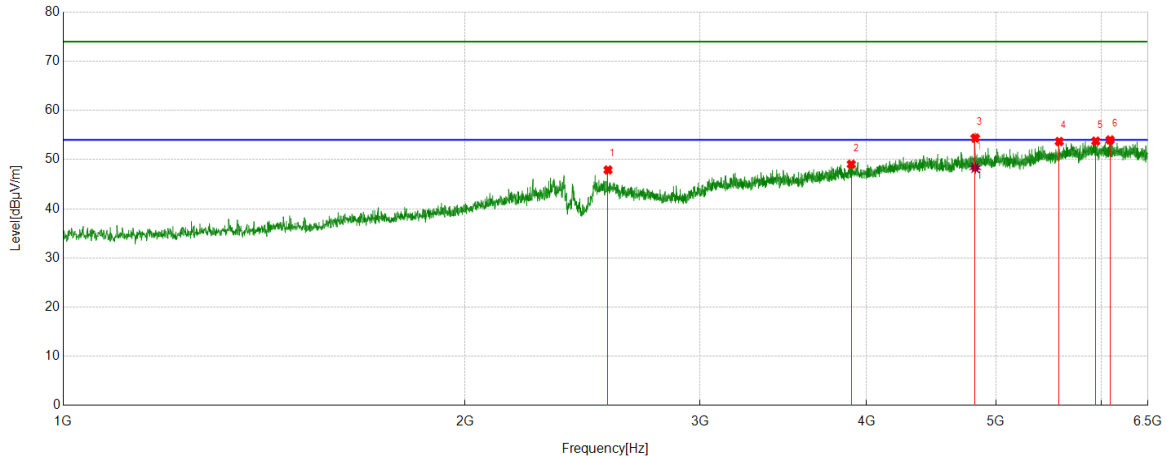
Remark:

1) Through pre-testing all the test modes and test channels, but only the data of the worst case is included in this test report.

Part 1: 1GHz~6.5GHz

HARMONICS AND SPURIOUS EMISSIONS

Test Mode	Channel	Polarization	Verdict
11B	LCH	Horizontal	PASS



PK Result:

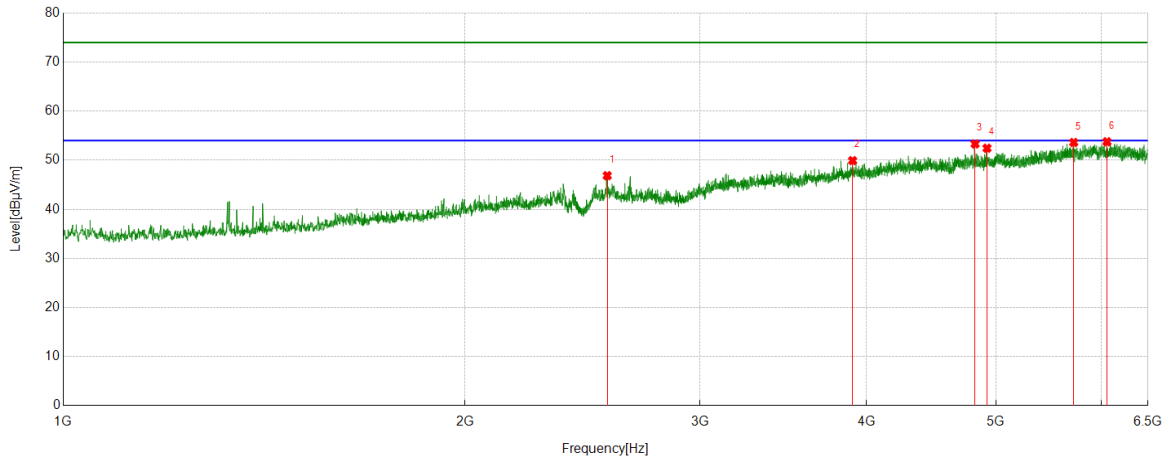
No.	Frequency	Reading Level	Correct Factor	Result	Limit	Margin	Remark
	[MHz]	[dBuV]	[dB/m]	[dBuV/m]	[dBuV/m]	[dB]	
1	2560.1325	42.33	5.56	47.89	74.00	-26.11	Horizontal
2	3895.4244	36.53	12.51	49.04	74.00	-24.96	Horizontal
3	4824.3530	38.71	15.67	54.38	74.00	-19.62	Horizontal
4	5577.2597	36.36	17.31	53.67	74.00	-20.33	Horizontal
5	5940.3050	35.32	18.43	53.75	74.00	-20.25	Horizontal
6	6088.8236	35.86	18.13	53.99	74.00	-20.01	Horizontal

AV Result:

No.	Frequency	Reading Level	Correct Factor	Result	Limit	Margin	Remark
	[MHz]	[dBuV]	[dB/m]	[dBuV/m]	[dBuV/m]	[dB]	
1	4824.3530	32.68	15.67	48.35	54.00	-5.65	Horizontal

- Note: 1. Measurement = Reading Level + Correct Factor,
Correct Factor = Antenna Factor + Loss (Cable + Filter) – Amplifier Gain.
2. If Peak Result complies with AV limit, AV Result is deemed to comply with AV limit.
3. Test setup: RBW: 1 MHz, VBW: 3 MHz, Sweep time: auto.
4. Peak: Peak detector.
5. For below 3GHz part, filter losses were only considered in the spurious frequency bands and the authorized band was not corrected for Band Reject Filter losses.
6. Only the worst case emission was recorded, if it complies with the limit, the other emissions deemed to comply with the limit.

Test Mode	Channel	Polarization	Verdict
11B	LCH	Vertical	PASS

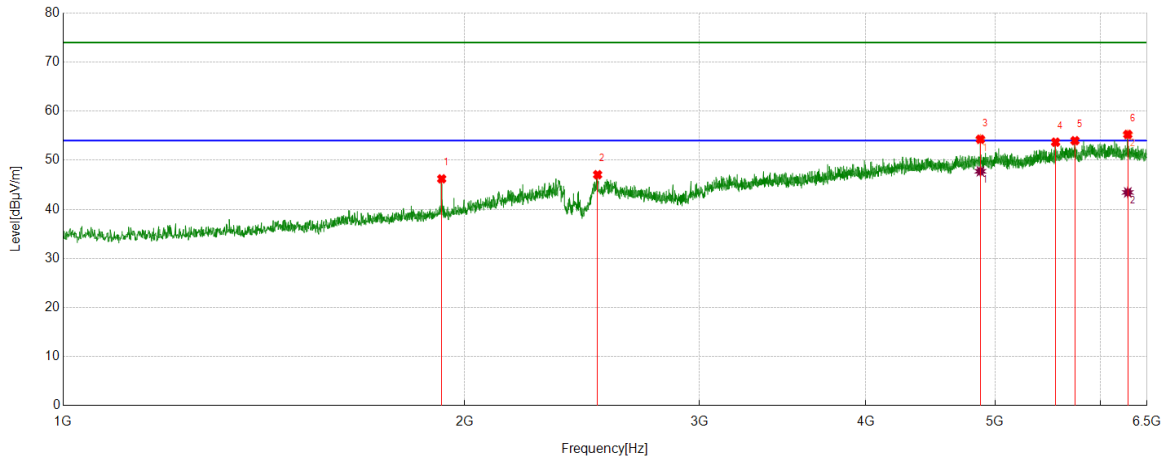


PK Result:

No.	Frequency	Reading Level	Correct Factor	Result	Limit	Margin	Remark
	[MHz]	[dBuV]	[dB/m]	[dBuV/m]	[dBuV/m]	[dB]	
1	2556.6946	41.22	5.64	46.86	74.00	-27.14	Vertical
2	3904.3630	37.39	12.53	49.92	74.00	-24.08	Vertical
3	4823.6655	37.60	15.72	53.32	74.00	-20.68	Vertical
4	4923.3654	37.11	15.34	52.45	74.00	-21.55	Vertical
5	5718.2148	35.99	17.63	53.62	74.00	-20.38	Vertical
6	6055.8195	35.77	18.00	53.77	74.00	-20.23	Vertical

- Note: 1. Measurement = Reading Level + Correct Factor,
Correct Factor = Antenna Factor + Loss (Cable + Filter) – Amplifier Gain.
2. If Peak Result complies with AV limit, AV Result is deemed to comply with AV limit.
3. Test setup: RBW: 1 MHz, VBW: 3 MHz, Sweep time: auto.
4. Peak: Peak detector.
5. For below 3GHz part, filter losses were only considered in the spurious frequency bands and the authorized band was not corrected for Band Reject Filter losses.
6. Only the worst case emission was recorded, if it complies with the limit, the other emissions deemed to comply with the limit.

Test Mode	Channel	Polarization	Verdict
11B	MCH	Horizontal	PASS



PK Result:

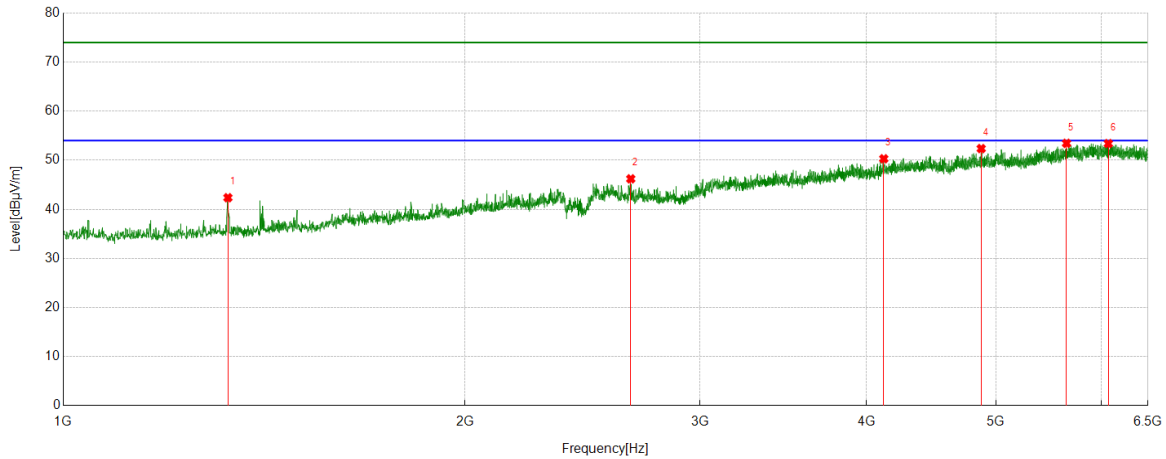
No.	Frequency	Reading Level	Correct Factor	Result	Limit	Margin	Remark
	[MHz]	[dBuV]	[dB/m]	[dBuV/m]	[dBuV/m]	[dB]	
1	1922.7403	43.15	3.06	46.21	74.00	-27.79	Horizontal
2	2516.8146	41.29	5.76	47.05	74.00	-26.95	Horizontal
3	4874.5468	39.17	15.10	54.27	74.00	-19.73	Horizontal
4	5550.4438	36.86	16.82	53.68	74.00	-20.32	Horizontal
5	5739.5299	36.16	17.83	53.99	74.00	-20.01	Horizontal
6	6287.5359	36.63	18.63	55.26	74.00	-18.74	Horizontal

AV Result:

No.	Frequency	Reading Level	Correct Factor	Result	Limit	Margin	Remark
	[MHz]	[dBuV]	[dB/m]	[dBuV/m]	[dBuV/m]	[dB]	
1	4874.5468	32.65	15.10	47.75	54.00	-6.25	Horizontal
2	6287.5359	24.82	18.63	43.45	54.00	-10.55	Horizontal

- Note: 1. Measurement = Reading Level + Correct Factor,
Correct Factor = Antenna Factor + Loss (Cable + Filter) – Amplifier Gain.
2. If Peak Result complies with AV limit, AV Result is deemed to comply with AV limit.
3. Test setup: RBW: 1 MHz, VBW: 3 MHz, Sweep time: auto.
4. Peak: Peak detector.
5. For below 3GHz part, filter losses were only considered in the spurious frequency bands and the authorized band was not corrected for Band Reject Filter losses.
6. Only the worst case emission was recorded, if it complies with the limit, the other emissions deemed to comply with the limit.

Test Mode	Channel	Polarization	Verdict
11B	MCH	Vertical	PASS

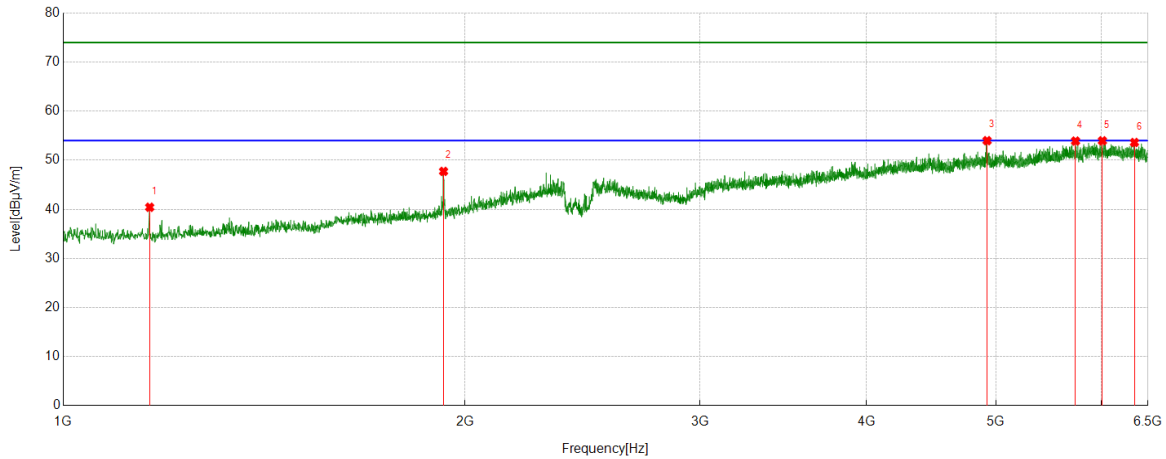


PK Result:

No.	Frequency	Reading Level	Correct Factor	Result	Limit	Margin	Remark
	[MHz]	[dBuV]	[dB/m]	[dBuV/m]	[dBuV/m]	[dB]	
1	1328.6661	43.46	-1.09	42.37	74.00	-31.63	Vertical
2	2662.5828	40.13	6.08	46.21	74.00	-27.79	Vertical
3	4120.2650	36.37	13.93	50.30	74.00	-23.70	Vertical
4	4874.5468	37.27	15.10	52.37	74.00	-21.63	Vertical
5	5648.0810	35.97	17.48	53.45	74.00	-20.55	Vertical
6	6070.2588	35.39	18.00	53.39	74.00	-20.61	Vertical

- Note: 1. Measurement = Reading Level + Correct Factor,
Correct Factor = Antenna Factor + Loss (Cable + Filter) – Amplifier Gain.
2. If Peak Result complies with AV limit, AV Result is deemed to comply with AV limit.
3. Test setup: RBW: 1 MHz, VBW: 3 MHz, Sweep time: auto.
4. Peak: Peak detector.
5. For below 3GHz part, filter losses were only considered in the spurious frequency bands and the authorized band was not corrected for Band Reject Filter losses.
6. Only the worst case emission was recorded, if it complies with the limit, the other emissions deemed to comply with the limit.

Test Mode	Channel	Polarization	Verdict
11B	HCH	Horizontal	PASS

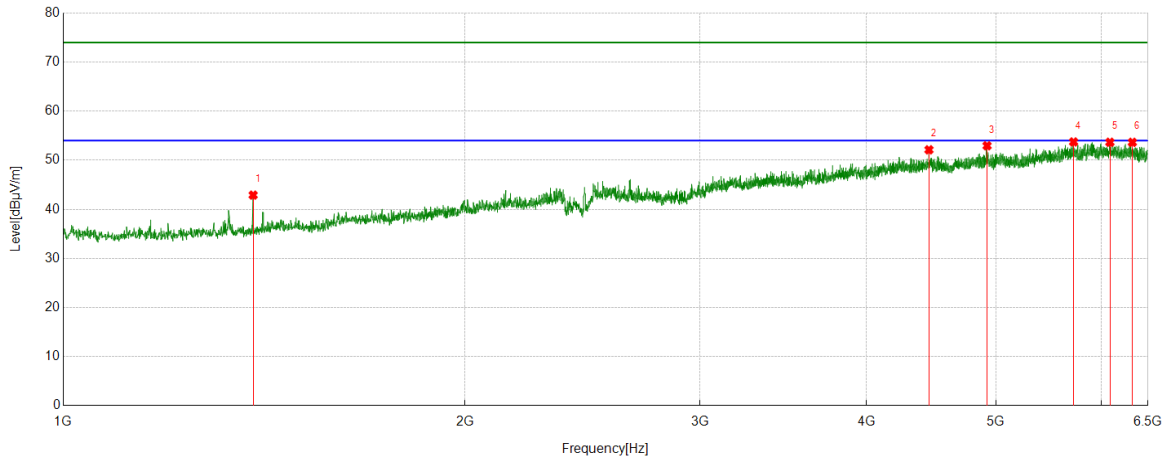


PK Result:

No.	Frequency	Reading Level	Correct Factor	Result	Limit	Margin	Remark
	[MHz]	[dBuV]	[dB/m]	[dBuV/m]	[dBuV/m]	[dB]	
1	1160.8951	42.13	-1.71	40.42	74.00	-33.58	Horizontal
2	1927.5534	44.79	2.94	47.73	74.00	-26.27	Horizontal
3	4924.0530	38.65	15.34	53.99	74.00	-20.01	Horizontal
4	5736.0920	36.27	17.64	53.91	74.00	-20.09	Horizontal
5	6008.3760	35.80	18.16	53.96	74.00	-20.04	Horizontal
6	6350.1063	34.40	19.22	53.62	74.00	-20.38	Horizontal

- Note: 1. Measurement = Reading Level + Correct Factor,
Correct Factor = Antenna Factor + Loss (Cable + Filter) – Amplifier Gain.
2. If Peak Result complies with AV limit, AV Result is deemed to comply with AV limit.
3. Test setup: RBW: 1 MHz, VBW: 3 MHz, Sweep time: auto.
4. Peak: Peak detector.
5. For below 3GHz part, filter losses were only considered in the spurious frequency bands and the authorized band was not corrected for Band Reject Filter losses.
6. Only the worst case emission was recorded, if it complies with the limit, the other emissions deemed to comply with the limit.

Test Mode	Channel	Polarization	Verdict
11B	HCH	Vertical	PASS

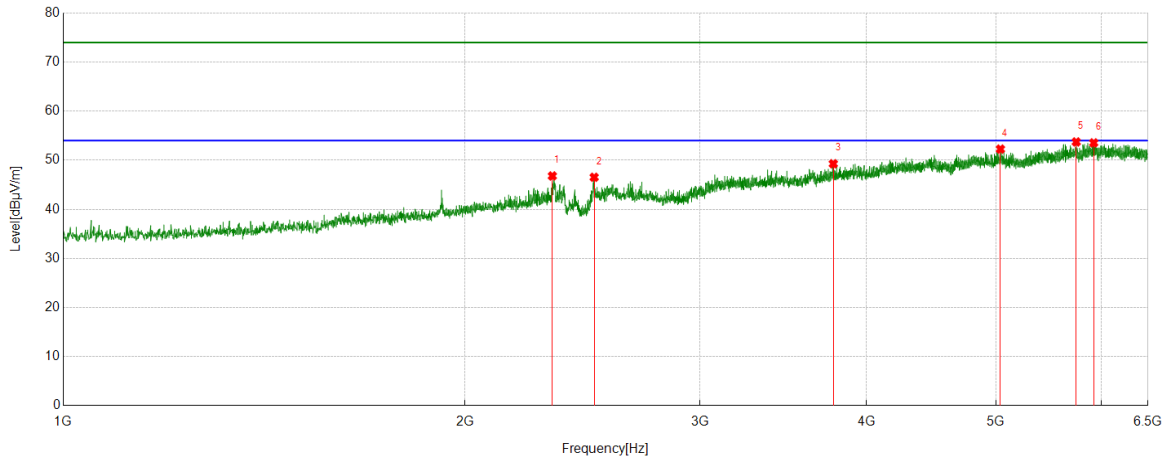


PK Result:

No.	Frequency	Reading Level	Correct Factor	Result	Limit	Margin	Remark
	[MHz]	[dBuV]	[dB/m]	[dBuV/m]	[dBuV/m]	[dB]	
1	1387.7985	44.21	-1.31	42.90	74.00	-31.10	Vertical
2	4454.4318	37.58	14.55	52.13	74.00	-21.87	Vertical
3	4924.0530	37.61	15.34	52.95	74.00	-21.05	Vertical
4	5716.8396	36.13	17.60	53.73	74.00	-20.27	Vertical
5	6086.7608	35.54	18.12	53.66	74.00	-20.34	Vertical
6	6327.4159	34.60	19.05	53.65	74.00	-20.35	Vertical

- Note: 1. Measurement = Reading Level + Correct Factor,
Correct Factor = Antenna Factor + Loss (Cable + Filter) – Amplifier Gain.
2. If Peak Result complies with AV limit, AV Result is deemed to comply with AV limit.
3. Test setup: RBW: 1 MHz, VBW: 3 MHz, Sweep time: auto.
4. Peak: Peak detector.
5. For below 3GHz part, filter losses were only considered in the spurious frequency bands and the authorized band was not corrected for Band Reject Filter losses.
6. Only the worst case emission was recorded, if it complies with the limit, the other emissions deemed to comply with the limit.

Test Mode	Channel	Polarization	Verdict
11G	LCH	Horizontal	PASS

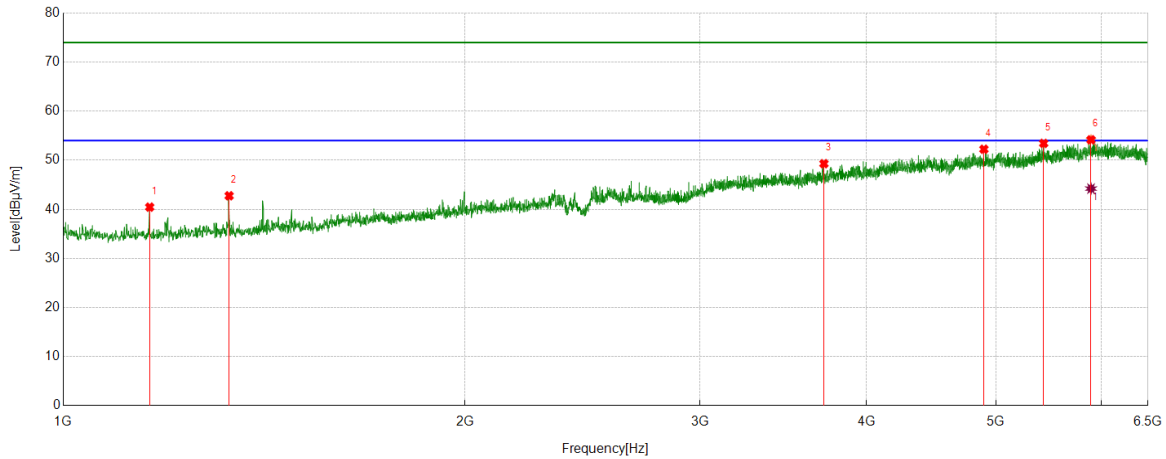


PK Result:

No.	Frequency	Reading Level	Correct Factor	Result	Limit	Margin	Remark
	[MHz]	[dBuV]	[dB/m]	[dBuV/m]	[dBuV/m]	[dB]	
1	2325.6657	41.86	4.94	46.80	74.00	-27.20	Horizontal
2	2499.6250	40.65	5.88	46.53	74.00	-27.47	Horizontal
3	3776.4721	37.18	12.10	49.28	74.00	-24.72	Horizontal
4	5038.8799	36.62	15.65	52.27	74.00	-21.73	Horizontal
5	5742.9679	35.94	17.79	53.73	74.00	-20.27	Horizontal
6	5918.9899	34.90	18.64	53.54	74.00	-20.46	Horizontal

- Note: 1. Measurement = Reading Level + Correct Factor,
Correct Factor = Antenna Factor + Loss (Cable + Filter) – Amplifier Gain.
2. If Peak Result complies with AV limit, AV Result is deemed to comply with AV limit.
3. Test setup: RBW: 1 MHz, VBW: 3 MHz, Sweep time: auto.
4. Peak: Peak detector.
5. For below 3GHz part, filter losses were only considered in the spurious frequency bands and the authorized band was not corrected for Band Reject Filter losses.
6. Only the worst case emission was recorded, if it complies with the limit, the other emissions deemed to comply with the limit.

Test Mode	Channel	Polarization	Verdict
11G	LCH	Vertical	PASS



PK Result:

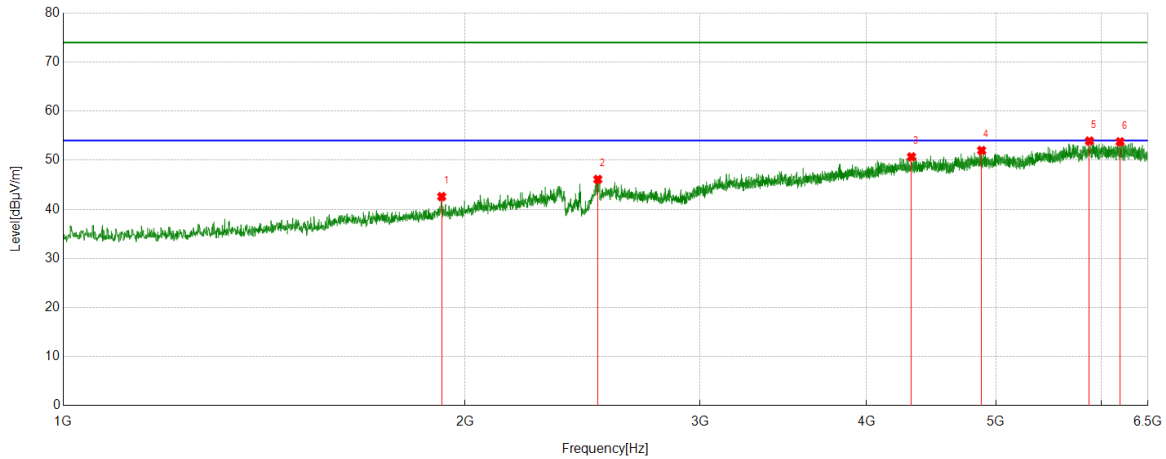
No.	Frequency	Reading Level	Correct Factor	Result	Limit	Margin	Remark
	[MHz]	[dBuV]	[dB/m]	[dBuV/m]	[dBuV/m]	[dB]	
1	1160.8951	42.16	-1.71	40.45	74.00	-33.55	Vertical
2	1331.4164	43.85	-1.09	42.76	74.00	-31.24	Vertical
3	3715.9645	37.39	11.91	49.30	74.00	-24.70	Vertical
4	4897.2372	37.00	15.24	52.24	74.00	-21.76	Vertical
5	5429.4287	35.88	17.56	53.44	74.00	-20.56	Vertical
6	5891.4864	36.20	17.97	54.17	74.00	-19.83	Vertical

AV Result:

No.	Frequency	Reading Level	Correct Factor	Result	Limit	Margin	Remark
	[MHz]	[dBuV]	[dB/m]	[dBuV/m]	[dBuV/m]	[dB]	
1	5891.4864	26.25	17.97	44.22	54.00	-9.78	Horizontal

- Note: 1. Measurement = Reading Level + Correct Factor,
Correct Factor = Antenna Factor + Loss (Cable + Filter) – Amplifier Gain.
2. If Peak Result complies with AV limit, AV Result is deemed to comply with AV limit.
3. Test setup: RBW: 1 MHz, VBW: 3 MHz, Sweep time: auto.
4. Peak: Peak detector.
5. For below 3GHz part, filter losses were only considered in the spurious frequency bands and the authorized band was not corrected for Band Reject Filter losses.
6. Only the worst case emission was recorded, if it complies with the limit, the other emissions deemed to comply with the limit.

Test Mode	Channel	Polarization	Verdict
11G	MCH	Horizontal	PASS

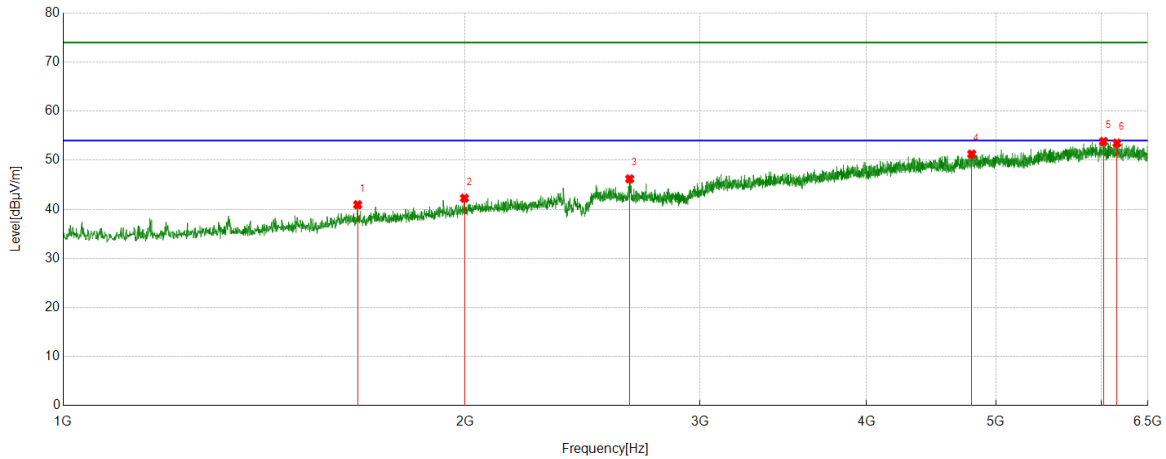


PK Result:

No.	Frequency	Reading Level	Correct Factor	Result	Limit	Margin	Remark
	[MHz]	[dBuV]	[dB/m]	[dBuV/m]	[dBuV/m]	[dB]	
1	1921.3652	39.51	3.08	42.59	74.00	-31.41	Horizontal
2	2515.4394	40.31	5.79	46.10	74.00	-27.90	Horizontal
3	4321.7277	37.23	13.46	50.69	74.00	-23.31	Horizontal
4	4877.9847	36.83	15.16	51.99	74.00	-22.01	Horizontal
5	5875.6720	36.15	17.77	53.92	74.00	-20.08	Horizontal
6	6194.7118	35.06	18.69	53.75	74.00	-20.25	Horizontal

- Note: 1. Measurement = Reading Level + Correct Factor,
Correct Factor = Antenna Factor + Loss (Cable + Filter) – Amplifier Gain.
2. If Peak Result complies with AV limit, AV Result is deemed to comply with AV limit.
3. Test setup: RBW: 1 MHz, VBW: 3 MHz, Sweep time: auto.
4. Peak: Peak detector.
5. For below 3GHz part, filter losses were only considered in the spurious frequency bands and the authorized band was not corrected for Band Reject Filter losses.
6. Only the worst case emission was recorded, if it complies with the limit, the other emissions deemed to comply with the limit.

Test Mode	Channel	Polarization	Verdict
11G	MCH	Vertical	PASS

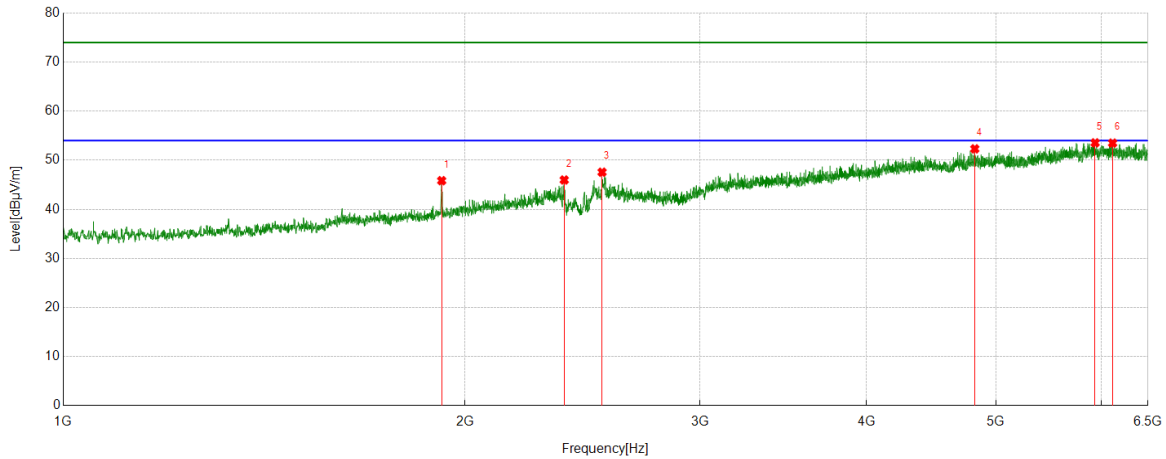


PK Result:

No.	Frequency	Reading Level	Correct Factor	Result	Limit	Margin	Remark
	[MHz]	[dBuV]	[dB/m]	[dBuV/m]	[dBuV/m]	[dB]	
1	1662.1453	39.83	1.11	40.94	74.00	-33.06	Vertical
2	1998.3748	39.04	3.22	42.26	74.00	-31.74	Vertical
3	2657.7697	40.08	6.12	46.20	74.00	-27.80	Vertical
4	4796.1620	35.91	15.34	51.25	74.00	-22.75	Vertical
5	6020.0650	35.85	17.96	53.81	74.00	-20.19	Vertical
6	6160.3325	34.90	18.59	53.49	74.00	-20.51	Vertical

- Note: 1. Measurement = Reading Level + Correct Factor,
Correct Factor = Antenna Factor + Loss (Cable + Filter) – Amplifier Gain.
2. If Peak Result complies with AV limit, AV Result is deemed to comply with AV limit.
3. Test setup: RBW: 1 MHz, VBW: 3 MHz, Sweep time: auto.
4. Peak: Peak detector.
5. For below 3GHz part, filter losses were only considered in the spurious frequency bands and the authorized band was not corrected for Band Reject Filter losses.
6. Only the worst case emission was recorded, if it complies with the limit, the other emissions deemed to comply with the limit.

Test Mode	Channel	Polarization	Verdict
11G	HCH	Horizontal	PASS

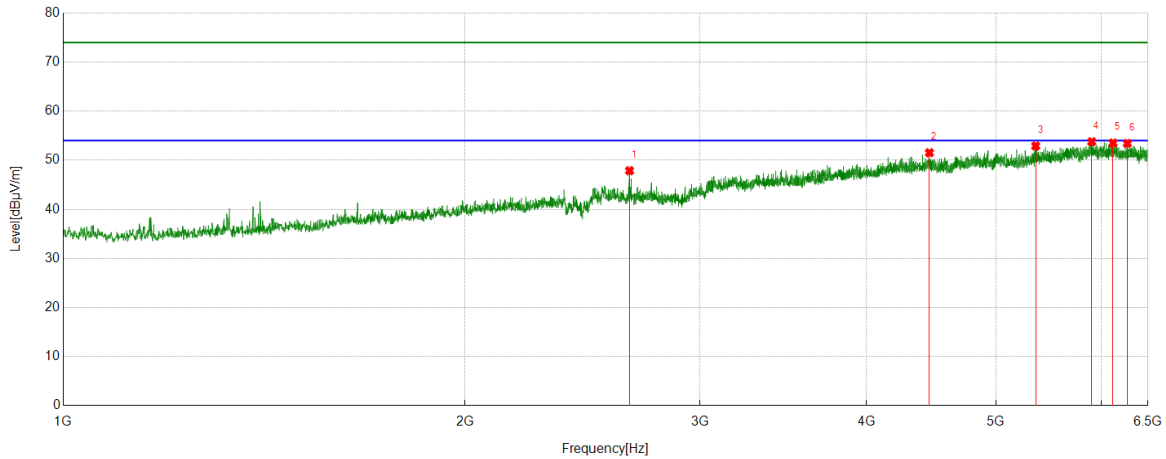


PK Result:

No.	Frequency	Reading Level	Correct Factor	Result	Limit	Margin	Remark
	[MHz]	[dBuV]	[dB/m]	[dBuV/m]	[dBuV/m]	[dB]	
1	1921.3652	42.76	3.08	45.84	74.00	-28.16	Horizontal
2	2373.7967	41.16	4.82	45.98	74.00	-28.02	Horizontal
3	2534.0043	41.85	5.72	47.57	74.00	-26.43	Horizontal
4	4820.9151	36.44	15.88	52.32	74.00	-21.68	Horizontal
5	5933.4292	34.79	18.76	53.55	74.00	-20.45	Horizontal
6	6114.9519	35.40	18.10	53.50	74.00	-20.50	Horizontal

- Note: 1. Measurement = Reading Level + Correct Factor,
Correct Factor = Antenna Factor + Loss (Cable + Filter) – Amplifier Gain.
2. If Peak Result complies with AV limit, AV Result is deemed to comply with AV limit.
3. Test setup: RBW: 1 MHz, VBW: 3 MHz, Sweep time: auto.
4. Peak: Peak detector.
5. For below 3GHz part, filter losses were only considered in the spurious frequency bands and the authorized band was not corrected for Band Reject Filter losses.
6. Only the worst case emission was recorded, if it complies with the limit, the other emissions deemed to comply with the limit.

Test Mode	Channel	Polarization	Verdict
11G	HCH	Vertical	PASS

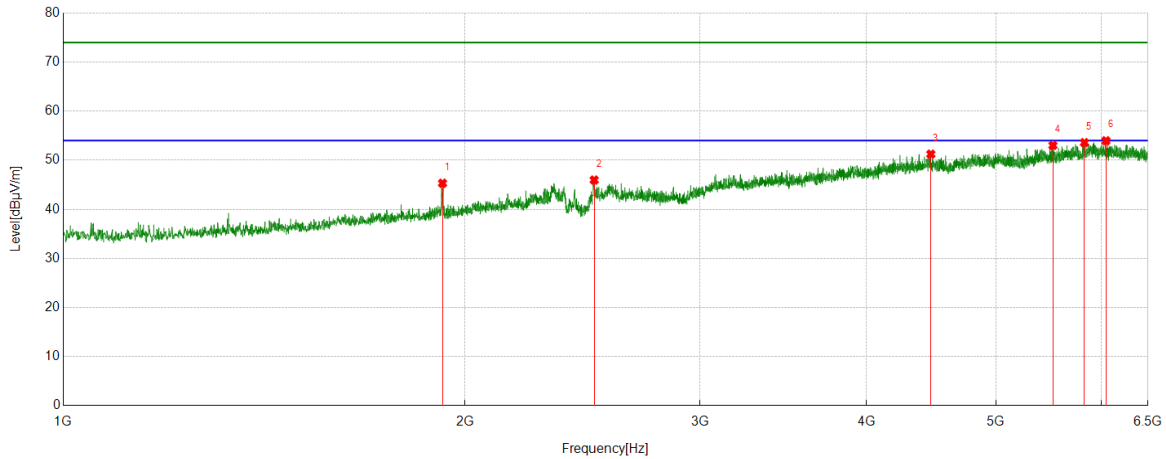


PK Result:

No.	Frequency	Reading Level	Correct Factor	Result	Limit	Margin	Remark
	[MHz]	[dBuV]	[dB/m]	[dBuV/m]	[dBuV/m]	[dB]	
1	2657.0821	41.71	6.16	47.87	74.00	-26.13	Vertical
2	4457.8697	36.74	14.79	51.53	74.00	-22.47	Vertical
3	5355.1694	36.76	16.15	52.91	74.00	-21.09	Vertical
4	5899.0499	35.83	17.93	53.76	74.00	-20.24	Vertical
5	6119.7650	35.26	18.25	53.51	74.00	-20.49	Vertical
6	6272.4091	34.73	18.70	53.43	74.00	-20.57	Vertical

- Note: 1. Measurement = Reading Level + Correct Factor,
Correct Factor = Antenna Factor + Loss (Cable + Filter) – Amplifier Gain.
2. If Peak Result complies with AV limit, AV Result is deemed to comply with AV limit.
3. Test setup: RBW: 1 MHz, VBW: 3 MHz, Sweep time: auto.
4. Peak: Peak detector.
5. For below 3GHz part, filter losses were only considered in the spurious frequency bands and the authorized band was not corrected for Band Reject Filter losses.
6. Only the worst case emission was recorded, if it complies with the limit, the other emissions deemed to comply with the limit.

Test Mode	Channel	Polarization	Verdict
11N HT20	LCH	Horizontal	PASS

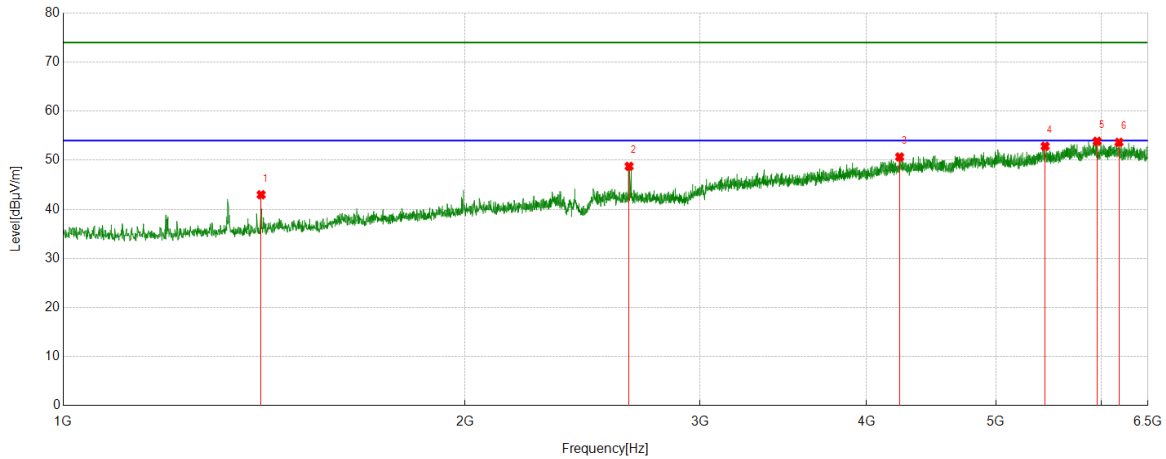


PK Result:

No.	Frequency	Reading Level	Correct Factor	Result	Limit	Margin	Remark
	[MHz]	[dBuV]	[dB/m]	[dBuV/m]	[dBuV/m]	[dB]	
1	1924.1155	42.30	3.02	45.32	74.00	-28.68	Horizontal
2	2499.6250	40.09	5.88	45.97	74.00	-28.03	Horizontal
3	4468.8711	36.68	14.56	51.24	74.00	-22.76	Horizontal
4	5516.7521	36.33	16.69	53.02	74.00	-20.98	Horizontal
5	5824.7906	34.91	18.68	53.59	74.00	-20.41	Horizontal
6	6044.8181	35.98	17.99	53.97	74.00	-20.03	Horizontal

- Note: 1. Measurement = Reading Level + Correct Factor,
Correct Factor = Antenna Factor + Loss (Cable + Filter) – Amplifier Gain.
2. If Peak Result complies with AV limit, AV Result is deemed to comply with AV limit.
3. Test setup: RBW: 1 MHz, VBW: 3 MHz, Sweep time: auto.
4. Peak: Peak detector.
5. For below 3GHz part, filter losses were only considered in the spurious frequency bands and the authorized band was not corrected for Band Reject Filter losses.
6. Only the worst case emission was recorded, if it complies with the limit, the other emissions deemed to comply with the limit.

Test Mode	Channel	Polarization	Verdict
11N HT20	LCH	Vertical	PASS

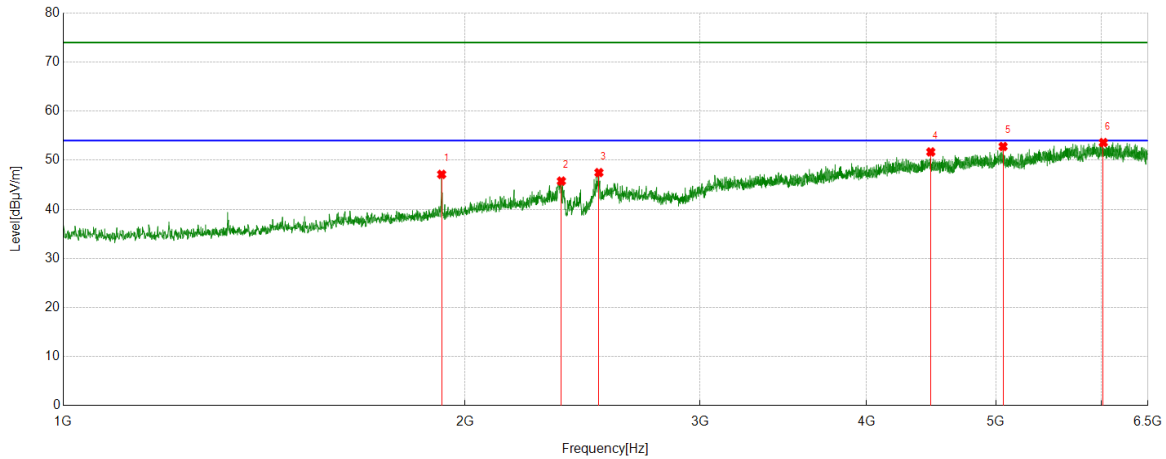


PK Result:

No.	Frequency	Reading Level	Correct Factor	Result	Limit	Margin	Remark
	[MHz]	[dBuV]	[dB/m]	[dBuV/m]	[dBuV/m]	[dB]	
1	1407.0509	44.31	-1.34	42.97	74.00	-31.03	Vertical
2	2655.0194	42.52	6.24	48.76	74.00	-25.24	Vertical
3	4234.4043	36.76	13.91	50.67	74.00	-23.33	Vertical
4	5443.1804	35.46	17.39	52.85	74.00	-21.15	Vertical
5	5954.0568	35.35	18.51	53.86	74.00	-20.14	Vertical
6	6183.0229	34.77	18.88	53.65	74.00	-20.35	Vertical

- Note: 1. Measurement = Reading Level + Correct Factor,
Correct Factor = Antenna Factor + Loss (Cable + Filter) – Amplifier Gain.
2. If Peak Result complies with AV limit, AV Result is deemed to comply with AV limit.
3. Test setup: RBW: 1 MHz, VBW: 3 MHz, Sweep time: auto.
4. Peak: Peak detector.
5. For below 3GHz part, filter losses were only considered in the spurious frequency bands and the authorized band was not corrected for Band Reject Filter losses.
6. Only the worst case emission was recorded, if it complies with the limit, the other emissions deemed to comply with the limit.

Test Mode	Channel	Polarization	Verdict
11N HT20	MCH	Horizontal	PASS

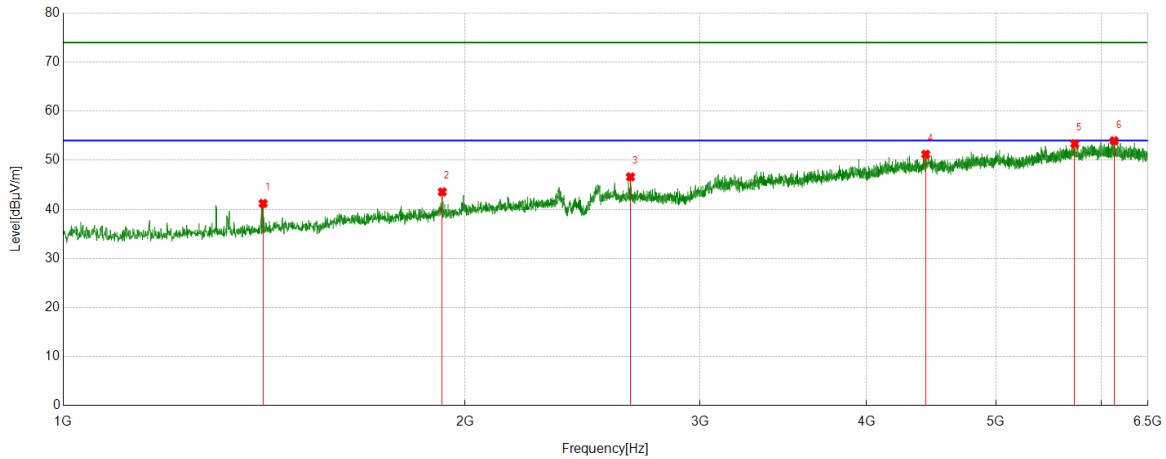


PK Result:

No.	Frequency	Reading Level	Correct Factor	Result	Limit	Margin	Remark
	[MHz]	[dBuV]	[dB/m]	[dBuV/m]	[dBuV/m]	[dB]	
1	1921.3652	44.04	3.08	47.12	74.00	-26.88	Horizontal
2	2362.1078	40.96	4.79	45.75	74.00	-28.25	Horizontal
3	2520.2525	41.79	5.69	47.48	74.00	-26.52	Horizontal
4	4468.1835	37.11	14.58	51.69	74.00	-22.31	Horizontal
5	5062.2578	36.88	15.92	52.80	74.00	-21.20	Horizontal
6	6018.0022	35.60	18.00	53.60	74.00	-20.40	Horizontal

- Note: 1. Measurement = Reading Level + Correct Factor,
Correct Factor = Antenna Factor + Loss (Cable + Filter) – Amplifier Gain.
2. If Peak Result complies with AV limit, AV Result is deemed to comply with AV limit.
3. Test setup: RBW: 1 MHz, VBW: 3 MHz, Sweep time: auto.
4. Peak: Peak detector.
5. For below 3GHz part, filter losses were only considered in the spurious frequency bands and the authorized band was not corrected for Band Reject Filter losses.
6. Only the worst case emission was recorded, if it complies with the limit, the other emissions deemed to comply with the limit.

Test Mode	Channel	Polarization	Verdict
11N HT20	MCH	Vertical	PASS

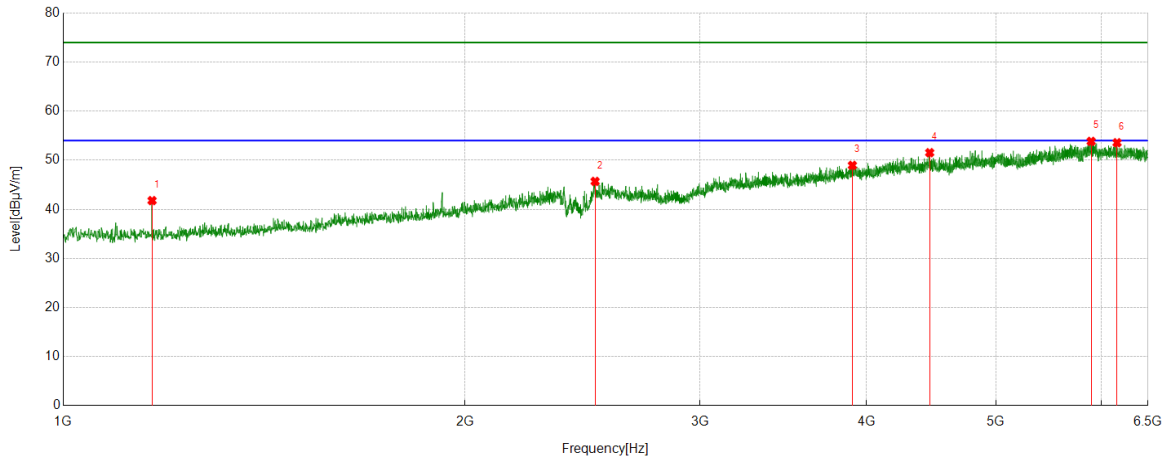


PK Result:

No.	Frequency	Reading Level	Correct Factor	Result	Limit	Margin	Remark
	[MHz]	[dBuV]	[dB/m]	[dBuV/m]	[dBuV/m]	[dB]	
1	1411.8640	42.47	-1.28	41.19	74.00	-32.81	Vertical
2	1923.4279	40.51	3.04	43.55	74.00	-30.45	Vertical
3	2661.2077	40.56	6.05	46.61	74.00	-27.39	Vertical
4	4429.6787	37.33	13.87	51.20	74.00	-22.80	Vertical
5	5728.5286	35.98	17.37	53.35	74.00	-20.65	Vertical
6	6130.7663	35.70	18.26	53.96	74.00	-20.04	Vertical

- Note: 1. Measurement = Reading Level + Correct Factor,
Correct Factor = Antenna Factor + Loss (Cable + Filter) – Amplifier Gain.
2. If Peak Result complies with AV limit, AV Result is deemed to comply with AV limit.
3. Test setup: RBW: 1 MHz, VBW: 3 MHz, Sweep time: auto.
4. Peak: Peak detector.
5. For below 3GHz part, filter losses were only considered in the spurious frequency bands and the authorized band was not corrected for Band Reject Filter losses.
6. Only the worst case emission was recorded, if it complies with the limit, the other emissions deemed to comply with the limit.

Test Mode	Channel	Polarization	Verdict
11N HT20	HCH	Horizontal	PASS

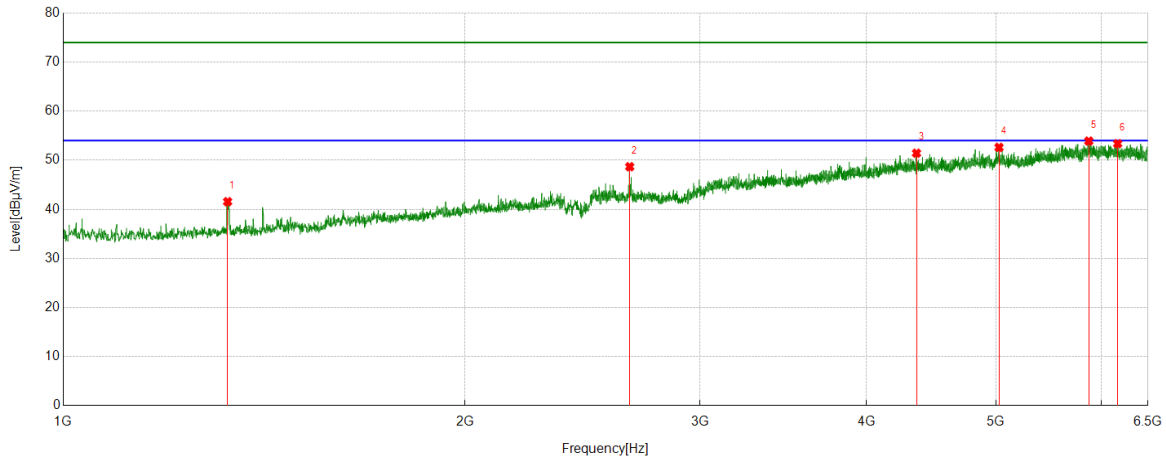


PK Result:

No.	Frequency	Reading Level	Correct Factor	Result	Limit	Margin	Remark
	[MHz]	[dBuV]	[dB/m]	[dBuV/m]	[dBuV/m]	[dB]	
1	1165.7082	43.63	-1.85	41.78	74.00	-32.22	Horizontal
2	2503.7505	39.80	5.89	45.69	74.00	-28.31	Horizontal
3	3902.9879	36.43	12.52	48.95	74.00	-25.05	Horizontal
4	4459.9325	36.60	14.94	51.54	74.00	-22.46	Horizontal
5	5892.8616	35.87	17.97	53.84	74.00	-20.16	Horizontal
6	6162.3953	34.97	18.60	53.57	74.00	-20.43	Horizontal

- Note: 1. Measurement = Reading Level + Correct Factor,
Correct Factor = Antenna Factor + Loss (Cable + Filter) – Amplifier Gain.
2. If Peak Result complies with AV limit, AV Result is deemed to comply with AV limit.
3. Test setup: RBW: 1 MHz, VBW: 3 MHz, Sweep time: auto.
4. Peak: Peak detector.
5. For below 3GHz part, filter losses were only considered in the spurious frequency bands and the authorized band was not corrected for Band Reject Filter losses.
6. Only the worst case emission was recorded, if it complies with the limit, the other emissions deemed to comply with the limit.

Test Mode	Channel	Polarization	Verdict
11N HT20	HCH	Vertical	PASS

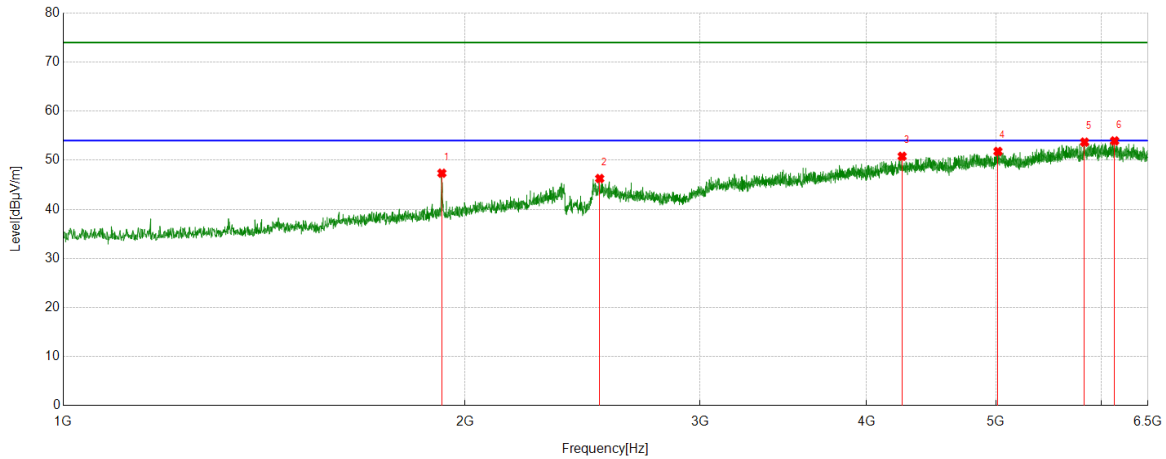


PK Result:

No.	Frequency	Reading Level	Correct Factor	Result	Limit	Margin	Remark
	[MHz]	[dBuV]	[dB/m]	[dBuV/m]	[dBuV/m]	[dB]	
1	1327.9785	42.66	-1.10	41.56	74.00	-32.44	Vertical
2	2657.7697	42.56	6.12	48.68	74.00	-25.32	Vertical
3	4359.5449	37.92	13.52	51.44	74.00	-22.56	Vertical
4	5026.5033	36.92	15.70	52.62	74.00	-21.38	Vertical
5	5868.7961	36.01	17.90	53.91	74.00	-20.09	Vertical
6	6168.5836	34.73	18.65	53.38	74.00	-20.62	Vertical

- Note: 1. Measurement = Reading Level + Correct Factor,
Correct Factor = Antenna Factor + Loss (Cable + Filter) – Amplifier Gain.
2. If Peak Result complies with AV limit, AV Result is deemed to comply with AV limit.
3. Test setup: RBW: 1 MHz, VBW: 3 MHz, Sweep time: auto.
4. Peak: Peak detector.
5. For below 3GHz part, filter losses were only considered in the spurious frequency bands and the authorized band was not corrected for Band Reject Filter losses.
6. Only the worst case emission was recorded, if it complies with the limit, the other emissions deemed to comply with the limit.

Test Mode	Channel	Polarization	Verdict
11N HT40	LCH	Horizontal	PASS

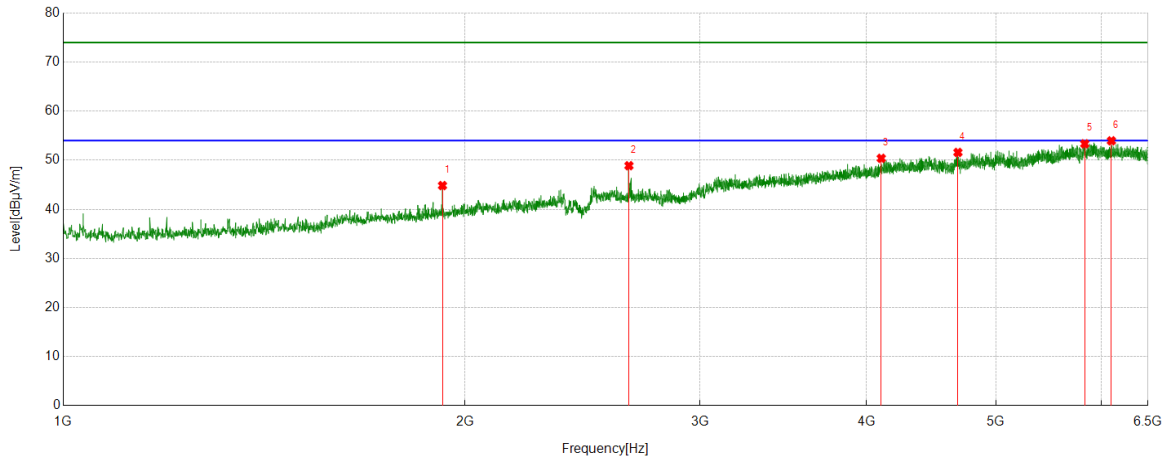


PK Result:

No.	Frequency	Reading Level	Correct Factor	Result	Limit	Margin	Remark
	[MHz]	[dBuV]	[dB/m]	[dBuV/m]	[dBuV/m]	[dB]	
1	1922.0528	44.30	3.06	47.36	74.00	-26.64	Horizontal
2	2523.6905	40.63	5.64	46.27	74.00	-27.73	Horizontal
3	4252.9691	36.82	13.98	50.80	74.00	-23.20	Horizontal
4	5017.5647	36.32	15.47	51.79	74.00	-22.21	Horizontal
5	5826.1658	35.01	18.68	53.69	74.00	-20.31	Horizontal
6	6136.2670	35.64	18.30	53.94	74.00	-20.06	Horizontal

- Note: 1. Measurement = Reading Level + Correct Factor,
Correct Factor = Antenna Factor + Loss (Cable + Filter) – Amplifier Gain.
2. If Peak Result complies with AV limit, AV Result is deemed to comply with AV limit.
3. Test setup: RBW: 1 MHz, VBW: 3 MHz, Sweep time: auto.
4. Peak: Peak detector.
5. For below 3GHz part, filter losses were only considered in the spurious frequency bands and the authorized band was not corrected for Band Reject Filter losses.
6. Only the worst case emission was recorded, if it complies with the limit, the other emissions deemed to comply with the limit.

Test Mode	Channel	Polarization	Verdict
11N HT40	LCH	Vertical	PASS

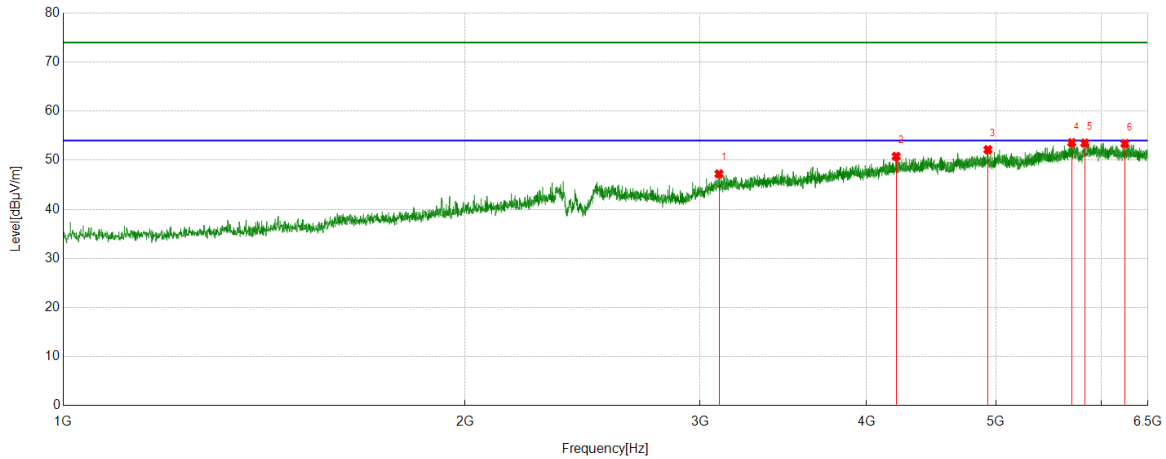


PK Result:

No.	Frequency	Reading Level	Correct Factor	Result	Limit	Margin	Remark
	[MHz]	[dBuV]	[dB/m]	[dBuV/m]	[dBuV/m]	[dB]	
1	1924.1155	41.82	3.02	44.84	74.00	-29.16	Vertical
2	2654.3318	42.61	6.28	48.89	74.00	-25.11	Vertical
3	4102.3878	36.73	13.66	50.39	74.00	-23.61	Vertical
4	4682.7103	36.45	15.14	51.59	74.00	-22.41	Vertical
5	5828.2285	34.66	18.69	53.35	74.00	-20.65	Vertical
6	6102.5753	35.69	18.27	53.96	74.00	-20.04	Vertical

- Note: 1. Measurement = Reading Level + Correct Factor,
Correct Factor = Antenna Factor + Loss (Cable + Filter) – Amplifier Gain.
2. If Peak Result complies with AV limit, AV Result is deemed to comply with AV limit.
3. Test setup: RBW: 1 MHz, VBW: 3 MHz, Sweep time: auto.
4. Peak: Peak detector.
5. For below 3GHz part, filter losses were only considered in the spurious frequency bands and the authorized band was not corrected for Band Reject Filter losses.
6. Only the worst case emission was recorded, if it complies with the limit, the other emissions deemed to comply with the limit.

Test Mode	Channel	Polarization	Verdict
11N HT40	MCH	Horizontal	PASS

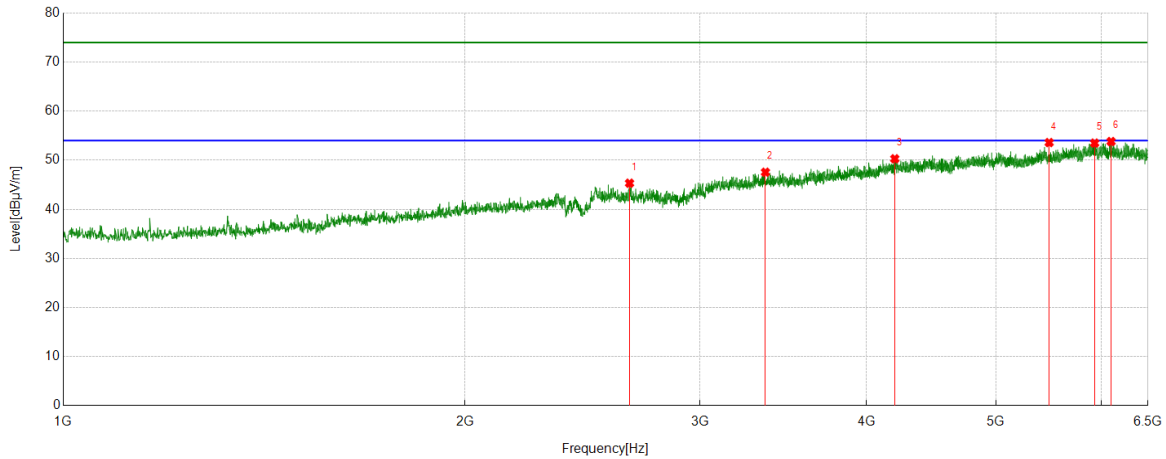


PK Result:

No.	Frequency	Reading Level	Correct Factor	Result	Limit	Margin	Remark
	[MHz]	[dBuV]	[dB/m]	[dBuV/m]	[dBuV/m]	[dB]	
1	3100.5751	37.66	9.56	47.22	74.00	-26.78	Horizontal
2	4209.6512	37.16	13.63	50.79	74.00	-23.21	Horizontal
3	4931.6165	36.81	15.34	52.15	74.00	-21.85	Horizontal
4	5698.9624	36.12	17.46	53.58	74.00	-20.42	Horizontal
5	5828.9161	34.81	18.68	53.49	74.00	-20.51	Horizontal
6	6246.2808	35.04	18.34	53.38	74.00	-20.62	Horizontal

- Note: 1. Measurement = Reading Level + Correct Factor,
Correct Factor = Antenna Factor + Loss (Cable + Filter) – Amplifier Gain.
2. If Peak Result complies with AV limit, AV Result is deemed to comply with AV limit.
3. Test setup: RBW: 1 MHz, VBW: 3 MHz, Sweep time: auto.
4. Peak: Peak detector.
5. For below 3GHz part, filter losses were only considered in the spurious frequency bands and the authorized band was not corrected for Band Reject Filter losses.
6. Only the worst case emission was recorded, if it complies with the limit, the other emissions deemed to comply with the limit.

Test Mode	Channel	Polarization	Verdict
11N HT40	MCH	Vertical	PASS

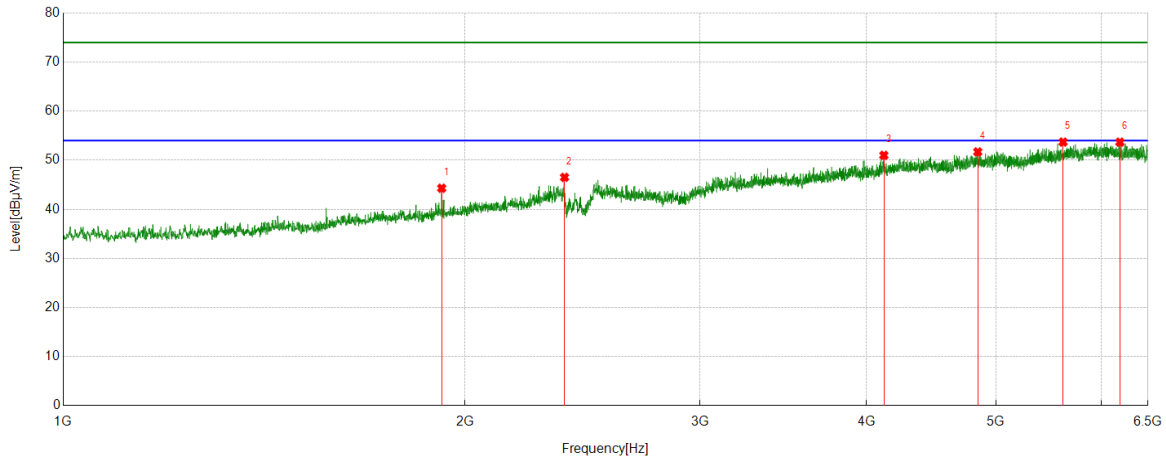


PK Result:

No.	Frequency	Reading Level	Correct Factor	Result	Limit	Margin	Remark
	[MHz]	[dBuV]	[dB/m]	[dBuV/m]	[dBuV/m]	[dB]	
1	2657.0821	39.16	6.16	45.32	74.00	-28.68	Vertical
2	3359.1074	37.47	10.09	47.56	74.00	-26.44	Vertical
3	4199.3374	37.23	13.07	50.30	74.00	-23.70	Vertical
4	5480.9976	36.95	16.65	53.60	74.00	-20.40	Vertical
5	5928.6161	34.60	18.89	53.49	74.00	-20.51	Vertical
6	6099.1374	35.45	18.36	53.81	74.00	-20.19	Vertical

- Note: 1. Measurement = Reading Level + Correct Factor,
Correct Factor = Antenna Factor + Loss (Cable + Filter) – Amplifier Gain.
2. If Peak Result complies with AV limit, AV Result is deemed to comply with AV limit.
3. Test setup: RBW: 1 MHz, VBW: 3 MHz, Sweep time: auto.
4. Peak: Peak detector.
5. For below 3GHz part, filter losses were only considered in the spurious frequency bands and the authorized band was not corrected for Band Reject Filter losses.
6. Only the worst case emission was recorded, if it complies with the limit, the other emissions deemed to comply with the limit.

Test Mode	Channel	Polarization	Verdict
11N HT40	HCH	Horizontal	PASS

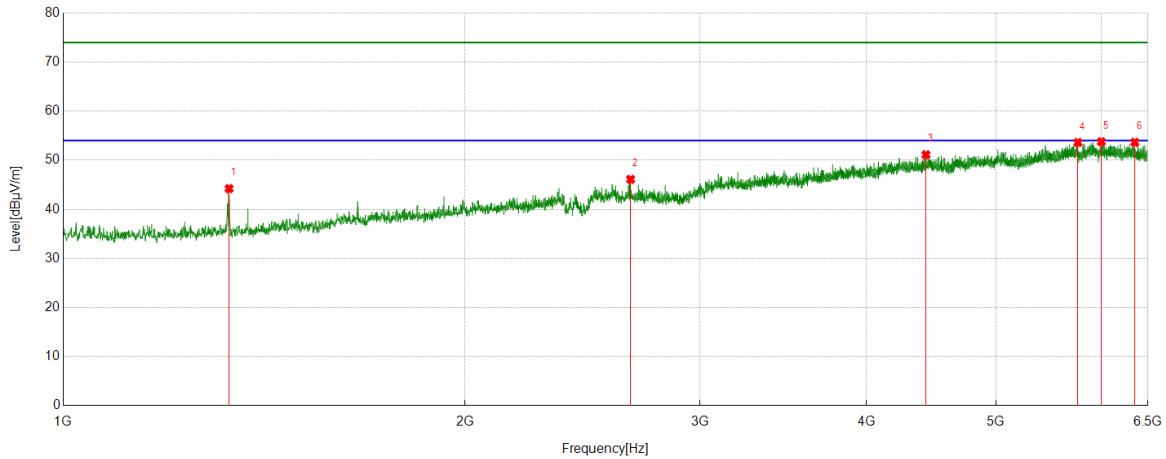


PK Result:

No.	Frequency	Reading Level	Correct Factor	Result	Limit	Margin	Remark
	[MHz]	[dBuV]	[dB/m]	[dBuV/m]	[dBuV/m]	[dB]	
1	1921.3652	41.22	3.08	44.30	74.00	-29.70	Horizontal
2	2375.1719	41.69	4.83	46.52	74.00	-27.48	Horizontal
3	4120.9526	37.11	13.89	51.00	74.00	-23.00	Horizontal
4	4845.6682	36.41	15.29	51.70	74.00	-22.30	Horizontal
5	5614.3893	36.24	17.46	53.70	74.00	-20.30	Horizontal
6	6192.6491	34.96	18.72	53.68	74.00	-20.32	Horizontal

- Note: 1. Measurement = Reading Level + Correct Factor,
Correct Factor = Antenna Factor + Loss (Cable + Filter) – Amplifier Gain.
2. If Peak Result complies with AV limit, AV Result is deemed to comply with AV limit.
3. Test setup: RBW: 1 MHz, VBW: 3 MHz, Sweep time: auto.
4. Peak: Peak detector.
5. For below 3GHz part, filter losses were only considered in the spurious frequency bands and the authorized band was not corrected for Band Reject Filter losses.
6. Only the worst case emission was recorded, if it complies with the limit, the other emissions deemed to comply with the limit.

Test Mode	Channel	Polarization	Verdict
11N HT40	HCH	Vertical	PASS



PK Result:

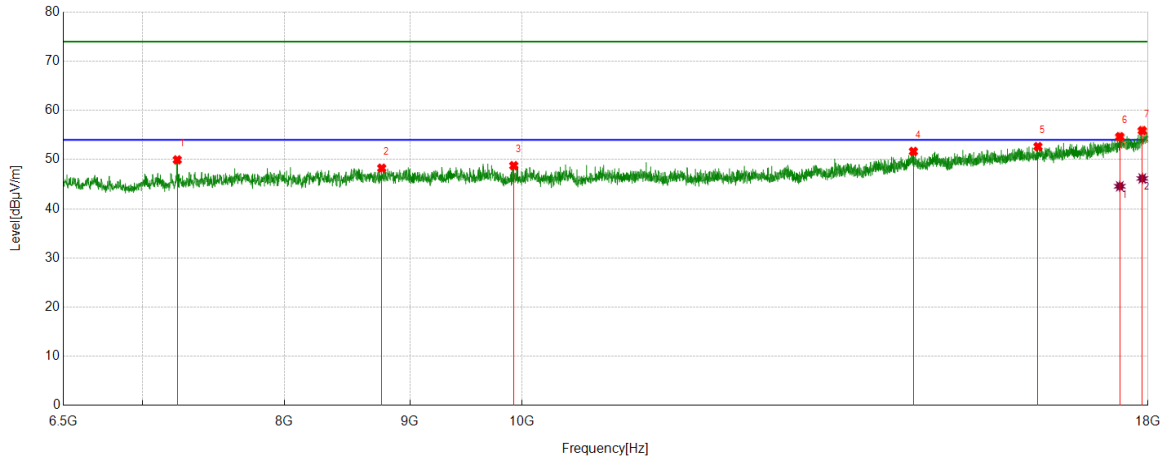
No.	Frequency	Reading Level	Correct Factor	Result	Limit	Margin	Remark
	[MHz]	[dBuV]	[dB/m]	[dBuV/m]	[dBuV/m]	[dB]	
1	1331.4164	45.31	-1.09	44.22	74.00	-29.78	Vertical
2	2661.8952	40.04	6.07	46.11	74.00	-27.89	Vertical
3	4431.0539	37.17	13.96	51.13	74.00	-22.87	Vertical
4	5759.4699	35.62	18.00	53.62	74.00	-20.38	Vertical
5	5997.3747	35.51	18.26	53.77	74.00	-20.23	Vertical
6	6354.2318	34.54	19.12	53.66	74.00	-20.34	Vertical

- Note: 1. Measurement = Reading Level + Correct Factor,
Correct Factor = Antenna Factor + Loss (Cable + Filter) – Amplifier Gain.
2. If Peak Result complies with AV limit, AV Result is deemed to comply with AV limit.
3. Test setup: RBW: 1 MHz, VBW: 3 MHz, Sweep time: auto.
4. Peak: Peak detector.
5. For below 3GHz part, filter losses were only considered in the spurious frequency bands and the authorized band was not corrected for Band Reject Filter losses.
6. Only the worst case emission was recorded, if it complies with the limit, the other emissions deemed to comply with the limit.

Part 2: 6.5GHz~18GHz

HARMONICS AND SPURIOUS EMISSIONS

Test Mode	Channel	Polarization	Verdict
11B	LCH	Horizontal	PASS



PK Result:

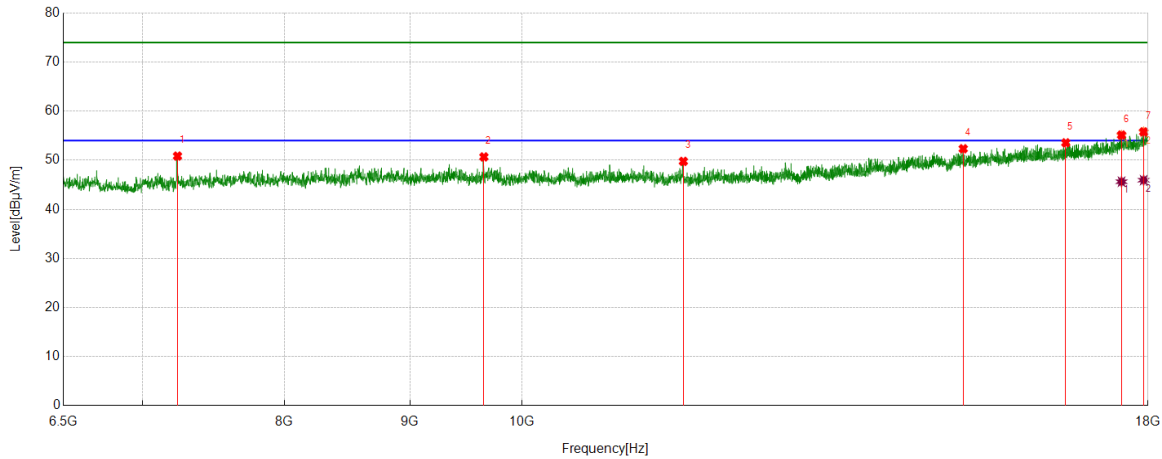
No.	Frequency	Reading Level	Correct Factor	Result	Limit	Margin	Remark
	[MHz]	[dBuV]	[dB/m]	[dBuV/m]	[dBuV/m]	[dB]	
1	7234.6543	46.10	3.84	49.94	74.00	-24.06	Horizontal
2	8765.7832	42.05	6.20	48.25	74.00	-25.75	Horizontal
3	9923.1154	42.20	6.56	48.76	74.00	-25.24	Horizontal
4	14441.7427	38.78	12.88	51.66	74.00	-22.34	Horizontal
5	16233.0916	37.38	15.26	52.64	74.00	-21.36	Horizontal
6	17529.8787	37.08	17.57	54.65	74.00	-19.35	Horizontal
7	17903.6755	36.69	19.20	55.89	74.00	-18.11	Horizontal

AV Result:

No.	Frequency	Reading Level	Correct Factor	Result	Limit	Margin	Remark
	[MHz]	[dBuV]	[dB/m]	[dBuV/m]	[dBuV/m]	[dB]	
1	17529.8787	27.00	17.57	44.57	54.00	-9.43	Horizontal
2	17903.6755	26.96	19.20	46.16	54.00	-7.84	Horizontal

- Note: 1. Measurement = Reading Level + Correct Factor,
Correct Factor = Antenna Factor + Loss (Cable + Filter) – Amplifier Gain.
- If Peak Result complies with AV limit, AV Result is deemed to comply with AV limit.
 - Peak detector: RBW: 1 MHz, VBW: 3 MHz.
 - Average detector: RBW: 1 MHz, VBW: 1/T MHz(refer to clause 7.1.).
 - For above 3GHz part, filter losses were only considered in the spurious frequency bands and the authorized band was not corrected for HPF losses.
 - Only the worst case emission was recorded, if it complies with the limit, the other emissions deemed to comply with the limit.

Test Mode	Channel	Polarization	Verdict
11B	LCH	Vertical	PASS



PK Result:

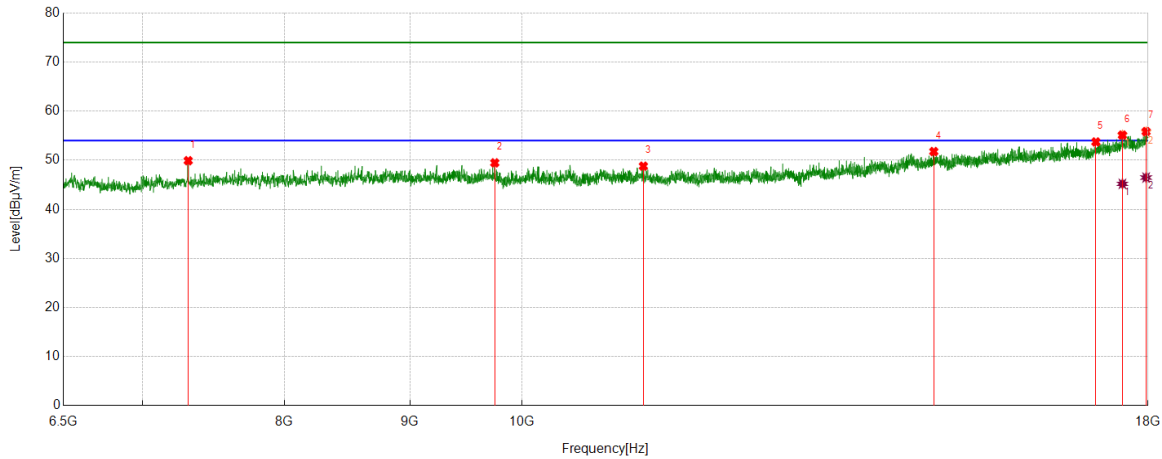
No.	Frequency	Reading Level	Correct Factor	Result	Limit	Margin	Remark
	[MHz]	[dBuV]	[dB/m]	[dBuV/m]	[dBuV/m]	[dB]	
1	7236.0920	47.04	3.81	50.85	74.00	-23.15	Vertical
2	9648.5186	44.27	6.41	50.68	74.00	-23.32	Vertical
3	11635.3919	42.18	7.59	49.77	74.00	-24.23	Vertical
4	15133.2667	39.12	13.22	52.34	74.00	-21.66	Vertical
5	16662.9579	37.89	15.66	53.55	74.00	-20.45	Vertical
6	17558.6323	37.35	17.78	55.13	74.00	-18.87	Vertical
7	17926.6783	36.41	19.37	55.78	74.00	-18.22	Vertical

AV Result:

No.	Frequency	Reading Level	Correct Factor	Result	Limit	Margin	Remark
	[MHz]	[dBuV]	[dB/m]	[dBuV/m]	[dBuV/m]	[dB]	
1	17558.6323	27.85	17.78	45.63	54.00	-8.37	Vertical
2	17926.6783	26.57	19.37	45.94	54.00	-8.06	Vertical

- Note: 1. Measurement = Reading Level + Correct Factor,
Correct Factor = Antenna Factor + Loss (Cable + Filter) – Amplifier Gain.
- If Peak Result complies with AV limit, AV Result is deemed to comply with AV limit.
 - Peak detector: RBW: 1 MHz, VBW: 3 MHz.
 - Average detector: RBW: 1 MHz, VBW: 1/T MHz(refer to clause 7.1.).
 - For above 3GHz part, filter losses were only considered in the spurious frequency bands and the authorized band was not corrected for HPF losses.
 - Only the worst case emission was recorded, if it complies with the limit, the other emissions deemed to comply with the limit.

Test Mode	Channel	Polarization	Verdict
11B	MCH	Horizontal	PASS



PK Result:

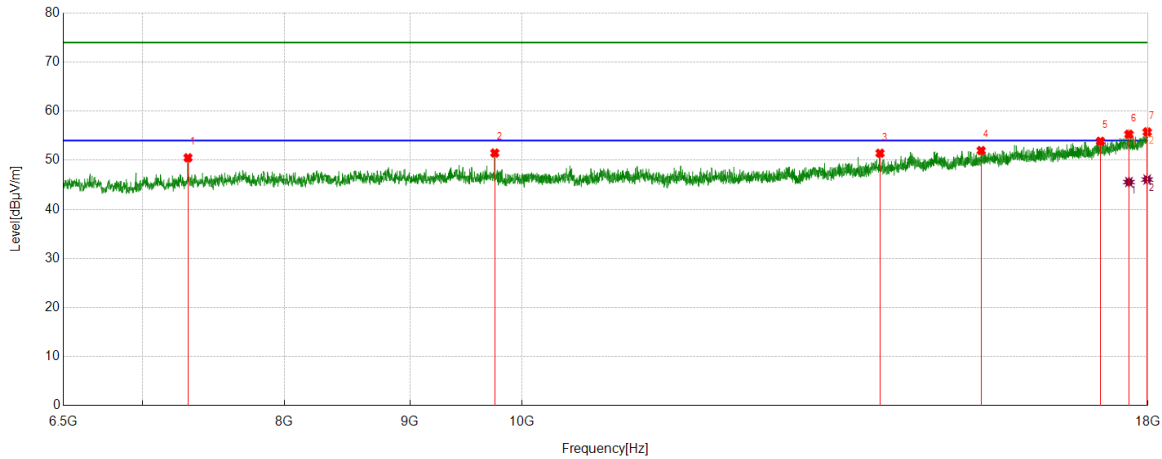
No.	Frequency	Reading Level	Correct Factor	Result	Limit	Margin	Remark
	[MHz]	[dBuV]	[dB/m]	[dBuV/m]	[dBuV/m]	[dB]	
1	7309.4137	46.06	3.85	49.91	74.00	-24.09	Horizontal
2	9747.7185	42.99	6.48	49.47	74.00	-24.53	Horizontal
3	11206.9634	41.44	7.36	48.80	74.00	-25.20	Horizontal
4	14720.6526	38.95	12.82	51.77	74.00	-22.23	Horizontal
5	17140.2675	37.35	16.38	53.73	74.00	-20.27	Horizontal
6	17573.0091	37.20	17.92	55.12	74.00	-18.88	Horizontal
7	17968.3710	36.21	19.63	55.84	74.00	-18.16	Horizontal

AV Result:

No.	Frequency	Reading Level	Correct Factor	Result	Limit	Margin	Remark
	[MHz]	[dBuV]	[dB/m]	[dBuV/m]	[dBuV/m]	[dB]	
1	17573.0091	27.27	17.92	45.19	54.00	-8.81	Horizontal
2	17968.3710	26.84	19.63	46.47	54.00	-7.53	Horizontal

- Note: 1. Measurement = Reading Level + Correct Factor,
Correct Factor = Antenna Factor + Loss (Cable + Filter) – Amplifier Gain.
- If Peak Result complies with AV limit, AV Result is deemed to comply with AV limit.
 - Peak detector: RBW: 1 MHz, VBW: 3 MHz.
 - Average detector: RBW: 1 MHz, VBW: 1/T MHz(refer to clause 7.1.).
 - For above 3GHz part, filter losses were only considered in the spurious frequency bands and the authorized band was not corrected for HPF losses.
 - Only the worst case emission was recorded, if it complies with the limit, the other emissions deemed to comply with the limit.

Test Mode	Channel	Polarization	Verdict
11B	MCH	Vertical	PASS



PK Result:

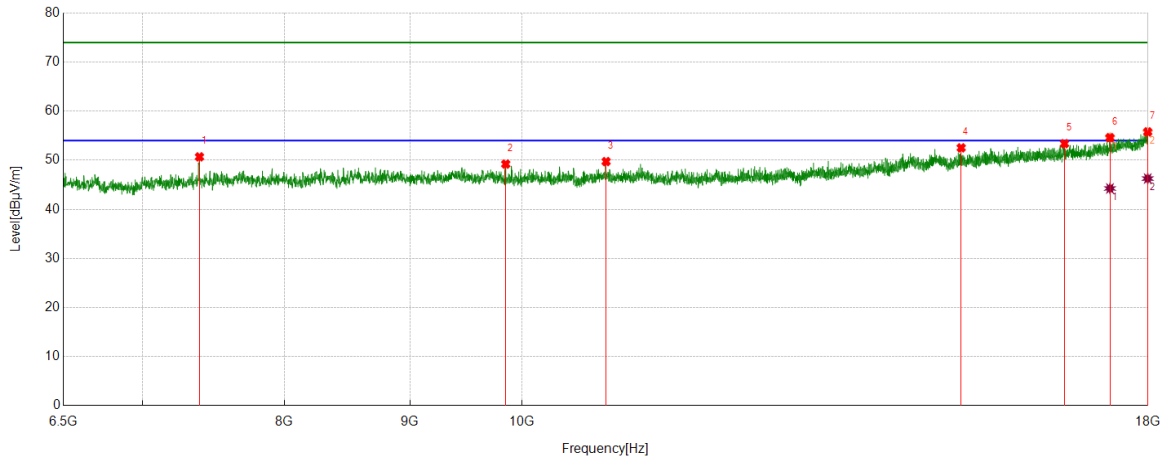
No.	Frequency	Reading Level	Correct Factor	Result	Limit	Margin	Remark
	[MHz]	[dBuV]	[dB/m]	[dBuV/m]	[dBuV/m]	[dB]	
1	7307.9760	46.68	3.82	50.50	74.00	-23.50	Vertical
2	9747.7185	44.99	6.48	51.47	74.00	-22.53	Vertical
3	13996.0620	39.73	11.70	51.43	74.00	-22.57	Vertical
4	15390.6113	38.37	13.59	51.96	74.00	-22.04	Vertical
5	17213.5892	37.11	16.75	53.86	74.00	-20.14	Vertical
6	17680.8351	37.17	18.12	55.29	74.00	-18.71	Vertical
7	17987.0609	35.96	19.80	55.76	74.00	-18.24	Vertical

AV Result:

No.	Frequency	Reading Level	Correct Factor	Result	Limit	Margin	Remark
	[MHz]	[dBuV]	[dB/m]	[dBuV/m]	[dBuV/m]	[dB]	
1	17680.8351	27.44	18.12	45.56	54.00	-8.44	Vertical
2	17987.0609	26.27	19.80	46.07	54.00	-7.93	Vertical

- Note: 1. Measurement = Reading Level + Correct Factor,
Correct Factor = Antenna Factor + Loss (Cable + Filter) – Amplifier Gain.
- If Peak Result complies with AV limit, AV Result is deemed to comply with AV limit.
 - Peak detector: RBW: 1 MHz, VBW: 3 MHz.
 - Average detector: RBW: 1 MHz, VBW: 1/T MHz(refer to clause 7.1.).
 - For above 3GHz part, filter losses were only considered in the spurious frequency bands and the authorized band was not corrected for HPF losses.
 - Only the worst case emission was recorded, if it complies with the limit, the other emissions deemed to comply with the limit.

Test Mode	Channel	Polarization	Verdict
11B	HCH	Horizontal	PASS



PK Result:

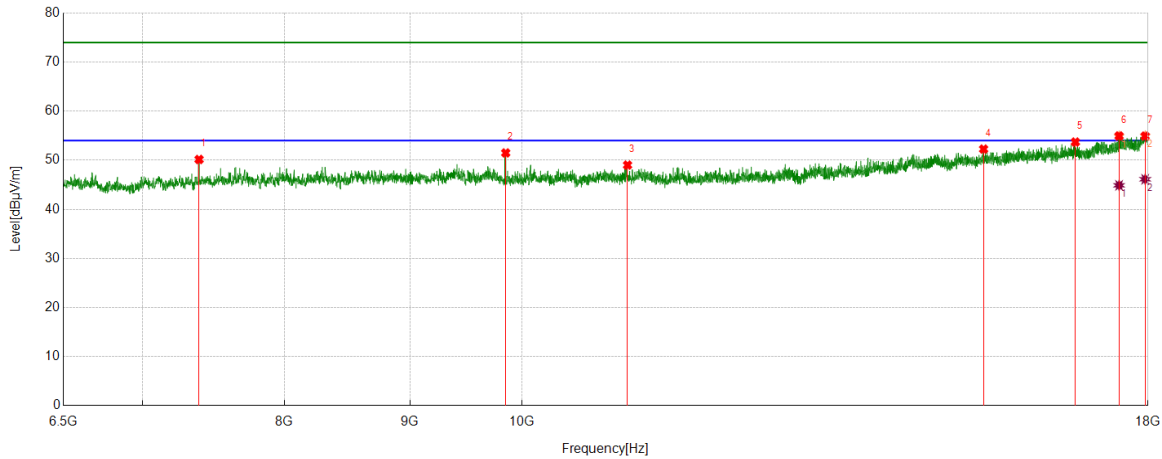
No.	Frequency	Reading Level	Correct Factor	Result	Limit	Margin	Remark
	[MHz]	[dBuV]	[dB/m]	[dBuV/m]	[dBuV/m]	[dB]	
1	7387.0484	46.54	4.15	50.69	74.00	-23.31	Horizontal
2	9848.3560	42.71	6.51	49.22	74.00	-24.78	Horizontal
3	10821.6652	42.79	6.94	49.73	74.00	-24.27	Horizontal
4	15104.5131	39.33	13.20	52.53	74.00	-21.47	Horizontal
5	16642.8304	37.56	15.82	53.38	74.00	-20.62	Horizontal
6	17368.8586	37.27	17.34	54.61	74.00	-19.39	Horizontal
7	17995.6870	36.01	19.77	55.78	74.00	-18.22	Horizontal

AV Result:

No.	Frequency	Reading Level	Correct Factor	Result	Limit	Margin	Remark
	[MHz]	[dBuV]	[dB/m]	[dBuV/m]	[dBuV/m]	[dB]	
1	17368.8586	26.91	17.34	44.25	54.00	-9.75	Horizontal
2	17995.6870	26.50	19.77	46.27	54.00	-7.73	Horizontal

- Note: 1. Measurement = Reading Level + Correct Factor,
Correct Factor = Antenna Factor + Loss (Cable + Filter) – Amplifier Gain.
2. If Peak Result complies with AV limit, AV Result is deemed to comply with AV limit.
3. Peak detector: RBW: 1 MHz, VBW: 3 MHz.
4. Average detector: RBW: 1 MHz, VBW: 1/T MHz(refer to clause 7.1.).
5. For above 3GHz part, filter losses were only considered in the spurious frequency bands and the authorized band was not corrected for HPF losses.
6. Only the worst case emission was recorded, if it complies with the limit, the other emissions deemed to comply with the limit.

Test Mode	Channel	Polarization	Verdict
11B	HCH	Vertical	PASS



PK Result:

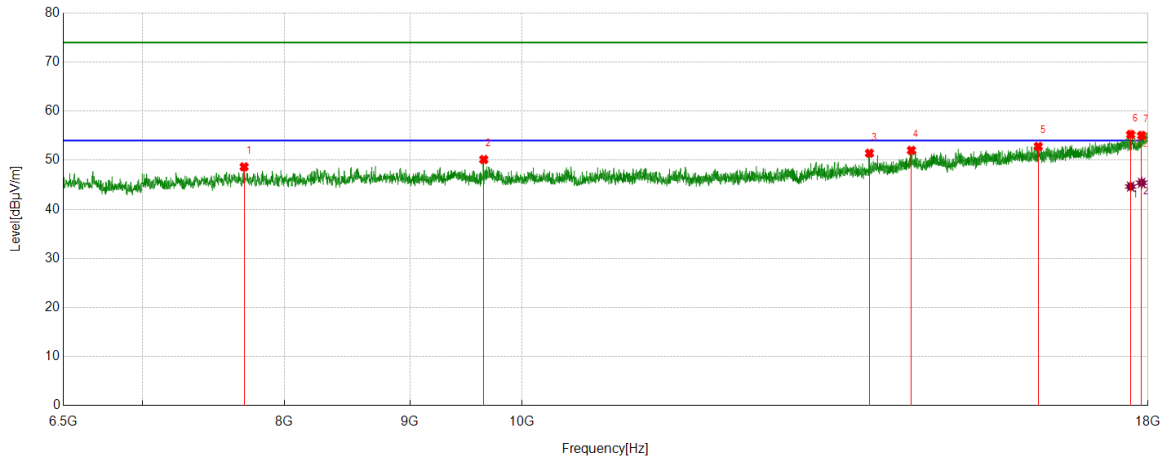
No.	Frequency	Reading Level	Correct Factor	Result	Limit	Margin	Remark
	[MHz]	[dBuV]	[dB/m]	[dBuV/m]	[dBuV/m]	[dB]	
1	7384.1730	46.00	4.16	50.16	74.00	-23.84	Vertical
2	9848.3560	44.98	6.51	51.49	74.00	-22.51	Vertical
3	11041.6302	41.81	7.20	49.01	74.00	-24.99	Vertical
4	15425.1156	38.52	13.75	52.27	74.00	-21.73	Vertical
5	16813.9142	37.47	16.24	53.71	74.00	-20.29	Vertical
6	17518.3773	37.33	17.62	54.95	74.00	-19.05	Vertical
7	17952.5566	35.40	19.53	54.93	74.00	-19.07	Vertical

AV Result:

No.	Frequency	Reading Level	Correct Factor	Result	Limit	Margin	Remark
	[MHz]	[dBuV]	[dB/m]	[dBuV/m]	[dBuV/m]	[dB]	
1	17518.3773	27.27	17.62	44.89	54.00	-9.11	Vertical
2	17952.5566	26.59	19.53	46.12	54.00	-7.88	Vertical

- Note: 1. Measurement = Reading Level + Correct Factor,
Correct Factor = Antenna Factor + Loss (Cable + Filter) – Amplifier Gain.
- If Peak Result complies with AV limit, AV Result is deemed to comply with AV limit.
 - Peak detector: RBW: 1 MHz, VBW: 3 MHz.
 - Average detector: RBW: 1 MHz, VBW: 1/T MHz(refer to clause 7.1.).
 - For above 3GHz part, filter losses were only considered in the spurious frequency bands and the authorized band was not corrected for HPF losses.
 - Only the worst case emission was recorded, if it complies with the limit, the other emissions deemed to comply with the limit.

Test Mode	Channel	Polarization	Verdict
11G	LCH	Horizontal	PASS



PK Result:

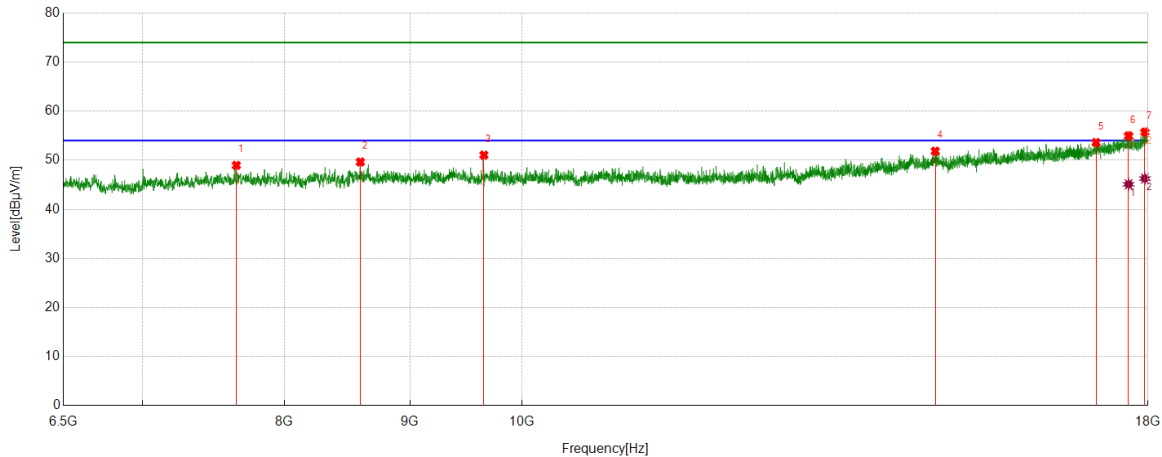
No.	Frequency	Reading Level	Correct Factor	Result	Limit	Margin	Remark
	[MHz]	[dBuV]	[dB/m]	[dBuV/m]	[dBuV/m]	[dB]	
1	7703.3379	43.19	5.47	48.66	74.00	-25.34	Horizontal
2	9647.0809	43.75	6.39	50.14	74.00	-23.86	Horizontal
3	13858.0448	39.97	11.46	51.43	74.00	-22.57	Horizontal
4	14414.4268	39.11	12.90	52.01	74.00	-21.99	Horizontal
5	16238.8424	37.62	15.19	52.81	74.00	-21.19	Horizontal
6	17709.5887	36.88	18.36	55.24	74.00	-18.76	Horizontal
7	17893.6117	35.79	19.26	55.05	74.00	-18.95	Horizontal

AV Result:

No.	Frequency	Reading Level	Correct Factor	Result	Limit	Margin	Remark
	[MHz]	[dBuV]	[dB/m]	[dBuV/m]	[dBuV/m]	[dB]	
1	17709.5887	26.28	18.36	44.64	54.00	-9.36	Horizontal
2	17893.6117	26.15	19.26	45.41	54.00	-8.59	Horizontal

- Note: 1. Measurement = Reading Level + Correct Factor,
Correct Factor = Antenna Factor + Loss (Cable + Filter) – Amplifier Gain.
- If Peak Result complies with AV limit, AV Result is deemed to comply with AV limit.
 - Peak detector: RBW: 1 MHz, VBW: 3 MHz.
 - Average detector: RBW: 1 MHz, VBW: 1/T MHz(refer to clause 7.1.).
 - For above 3GHz part, filter losses were only considered in the spurious frequency bands and the authorized band was not corrected for HPF losses.
 - Only the worst case emission was recorded, if it complies with the limit, the other emissions deemed to comply with the limit.

Test Mode	Channel	Polarization	Verdict
11G	LCH	Vertical	PASS



PK Result:

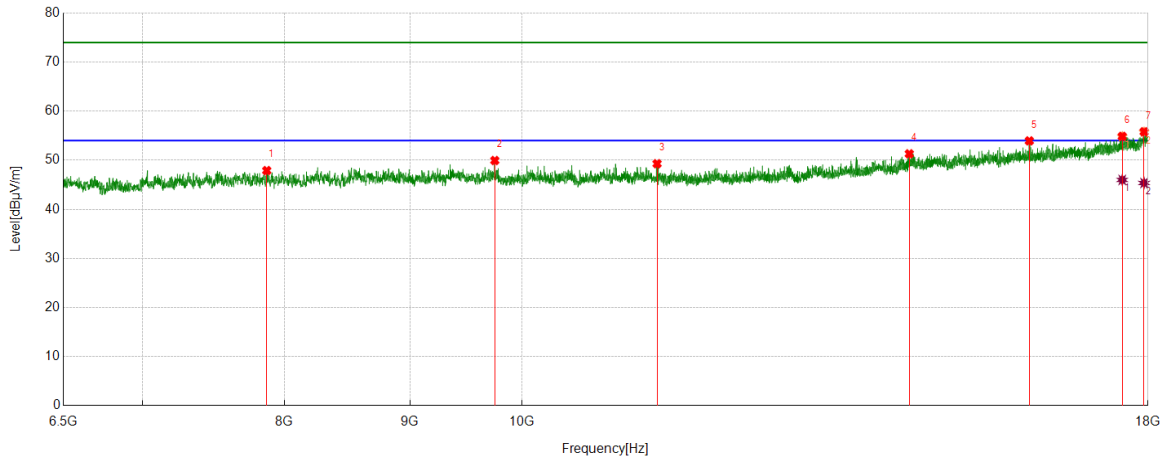
No.	Frequency	Reading Level	Correct Factor	Result	Limit	Margin	Remark
	[MHz]	[dBuV]	[dB/m]	[dBuV/m]	[dBuV/m]	[dB]	
1	7647.2684	43.62	5.34	48.96	74.00	-25.04	Vertical
2	8591.8240	43.66	5.99	49.65	74.00	-24.35	Vertical
3	9648.5186	44.64	6.41	51.05	74.00	-22.95	Vertical
4	14740.7801	38.95	12.90	51.85	74.00	-22.15	Vertical
5	17143.1429	37.21	16.41	53.62	74.00	-20.38	Vertical
6	17675.0844	36.88	18.10	54.98	74.00	-19.02	Vertical
7	17948.2435	36.26	19.48	55.74	74.00	-18.26	Vertical

AV Result:

No.	Frequency	Reading Level	Correct Factor	Result	Limit	Margin	Remark
	[MHz]	[dBuV]	[dB/m]	[dBuV/m]	[dBuV/m]	[dB]	
1	17675.0844	27.00	18.10	45.10	54.00	-8.90	Vertical
2	17948.2435	26.79	19.48	46.27	54.00	-7.73	Vertical

- Note: 1. Measurement = Reading Level + Correct Factor,
Correct Factor = Antenna Factor + Loss (Cable + Filter) – Amplifier Gain.
- If Peak Result complies with AV limit, AV Result is deemed to comply with AV limit.
 - Peak detector: RBW: 1 MHz, VBW: 3 MHz.
 - Average detector: RBW: 1 MHz, VBW: 1/T MHz (refer to clause 7.1.).
 - For above 3GHz part, filter losses were only considered in the spurious frequency bands and the authorized band was not corrected for HPF losses.
 - Only the worst case emission was recorded, if it complies with the limit, the other emissions deemed to comply with the limit.

Test Mode	Channel	Polarization	Verdict
11G	MCH	Horizontal	PASS



PK Result:

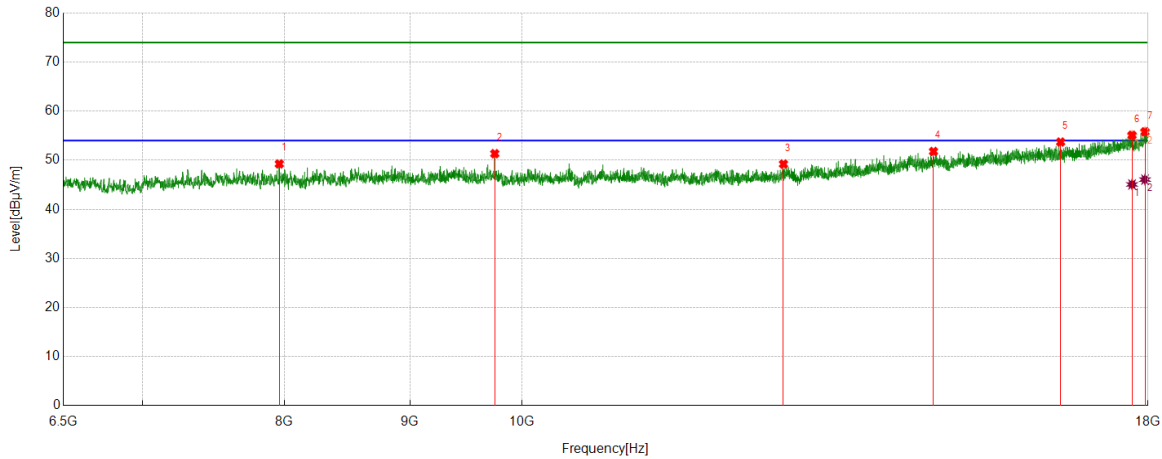
No.	Frequency	Reading Level	Correct Factor	Result	Limit	Margin	Remark
	[MHz]	[dBuV]	[dB/m]	[dBuV/m]	[dBuV/m]	[dB]	
1	7868.6711	42.50	5.39	47.89	74.00	-26.11	Horizontal
2	9747.7185	43.47	6.48	49.95	74.00	-24.05	Horizontal
3	11352.169	41.96	7.33	49.29	74.00	-24.71	Horizontal
4	14385.6732	38.55	12.76	51.31	74.00	-22.69	Horizontal
5	16102.2628	39.25	14.70	53.95	74.00	-20.05	Horizontal
6	17570.1338	36.97	17.90	54.87	74.00	-19.13	Horizontal
7	17933.8667	36.41	19.40	55.81	74.00	-18.19	Horizontal

AV Result:

No.	Frequency	Reading Level	Correct Factor	Result	Limit	Margin	Remark
	[MHz]	[dBuV]	[dB/m]	[dBuV/m]	[dBuV/m]	[dB]	
1	17570.1338	28.09	17.90	45.99	54.00	-8.01	Horizontal
2	17933.8667	25.96	19.40	45.36	54.00	-8.64	Horizontal

- Note: 1. Measurement = Reading Level + Correct Factor,
Correct Factor = Antenna Factor + Loss (Cable + Filter) – Amplifier Gain.
2. If Peak Result complies with AV limit, AV Result is deemed to comply with AV limit.
3. Peak detector: RBW: 1 MHz, VBW: 3 MHz.
4. Average detector: RBW: 1 MHz, VBW: 1/T MHz(refer to clause 7.1.).
5. For above 3GHz part, filter losses were only considered in the spurious frequency bands and the authorized band was not corrected for HPF losses.
6. Only the worst case emission was recorded, if it complies with the limit, the other emissions deemed to comply with the limit.

Test Mode	Channel	Polarization	Verdict
11G	MCH	Vertical	PASS



PK Result:

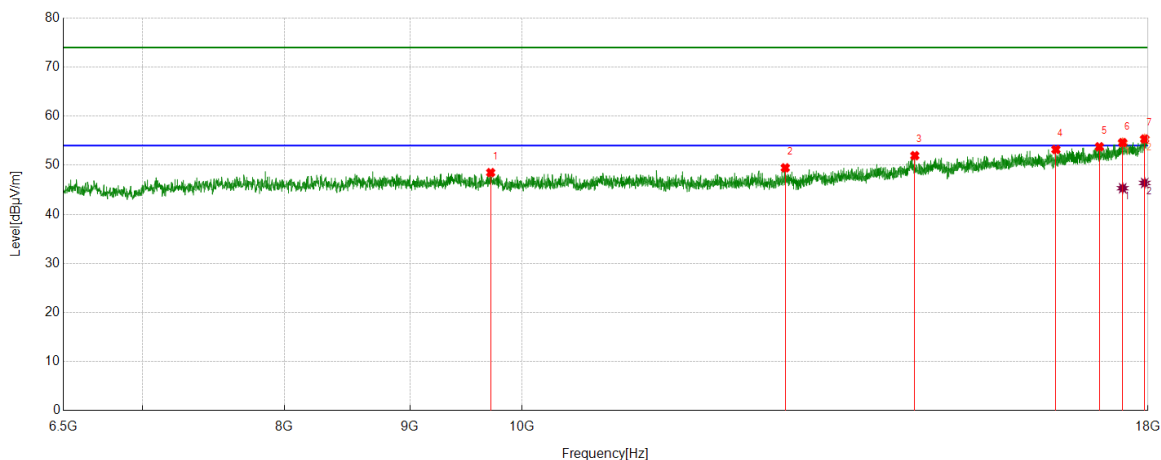
No.	Frequency	Reading Level	Correct Factor	Result	Limit	Margin	Remark
	[MHz]	[dBuV]	[dB/m]	[dBuV/m]	[dBuV/m]	[dB]	
1	7962.1203	43.43	5.82	49.25	74.00	-24.75	Vertical
2	9747.7185	44.86	6.48	51.34	74.00	-22.66	Vertical
3	12782.6603	40.29	8.93	49.22	74.00	-24.78	Vertical
4	14716.3395	38.98	12.80	51.78	74.00	-22.22	Vertical
5	16582.4478	37.86	15.85	53.71	74.00	-20.29	Vertical
6	17732.5916	36.56	18.54	55.10	74.00	-18.90	Vertical
7	17949.6812	36.31	19.49	55.80	74.00	-18.20	Vertical

AV Result:

No.	Frequency	Reading Level	Correct Factor	Result	Limit	Margin	Remark
	[MHz]	[dBuV]	[dB/m]	[dBuV/m]	[dBuV/m]	[dB]	
1	17732.5916	26.53	18.54	45.07	54.00	-8.93	Vertical
2	17949.6812	26.57	19.49	46.06	54.00	-7.94	Vertical

- Note: 1. Measurement = Reading Level + Correct Factor,
Correct Factor = Antenna Factor + Loss (Cable + Filter) – Amplifier Gain.
- If Peak Result complies with AV limit, AV Result is deemed to comply with AV limit.
 - Peak detector: RBW: 1 MHz, VBW: 3 MHz.
 - Average detector: RBW: 1 MHz, VBW: 1/T MHz(refer to clause 7.1.).
 - For above 3GHz part, filter losses were only considered in the spurious frequency bands and the authorized band was not corrected for HPF losses.
 - Only the worst case emission was recorded, if it complies with the limit, the other emissions deemed to comply with the limit.

Test Mode	Channel	Polarization	Verdict
11G	HCH	Horizontal	PASS



PK Result:

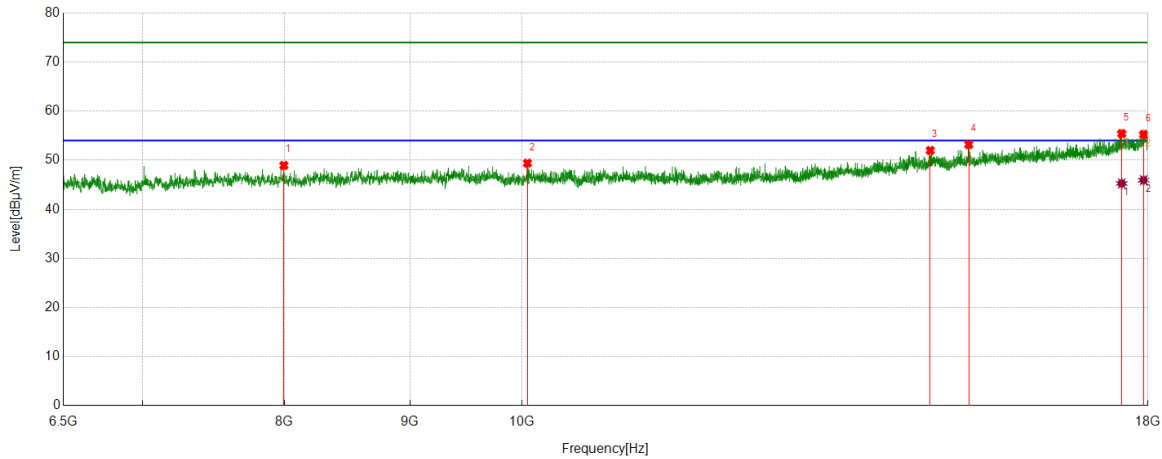
No.	Frequency	Reading Level	Correct Factor	Result	Limit	Margin	Remark
	[MHz]	[dBuV]	[dB/m]	[dBuV/m]	[dBuV/m]	[dB]	
1	9710.3388	41.94	6.56	48.50	74.00	-25.50	Horizontal
2	12804.2255	40.48	8.99	49.47	74.00	-24.53	Horizontal
3	14460.4326	39.13	12.82	51.95	74.00	-22.05	Horizontal
4	16509.1261	37.26	15.94	53.20	74.00	-20.80	Horizontal
5	17197.7747	37.16	16.60	53.76	74.00	-20.24	Horizontal
6	17577.3222	36.68	17.93	54.61	74.00	-19.39	Horizontal
7	17945.3682	35.87	19.48	55.35	74.00	-18.65	Horizontal

AV Result:

No.	Frequency	Reading Level	Correct Factor	Result	Limit	Margin	Remark
	[MHz]	[dBuV]	[dB/m]	[dBuV/m]	[dBuV/m]	[dB]	
1	17577.3222	27.39	17.93	45.32	54.00	-8.68	Horizontal
2	17945.3682	26.91	19.48	46.39	54.00	-7.61	Horizontal

- Note: 1. Measurement = Reading Level + Correct Factor,
Correct Factor = Antenna Factor + Loss (Cable + Filter) – Amplifier Gain.
- If Peak Result complies with AV limit, AV Result is deemed to comply with AV limit.
 - Peak detector: RBW: 1 MHz, VBW: 3 MHz.
 - Average detector: RBW: 1 MHz, VBW: 1/T MHz(refer to clause 7.1.).
 - For above 3GHz part, filter losses were only considered in the spurious frequency bands and the authorized band was not corrected for HPF losses.
 - Only the worst case emission was recorded, if it complies with the limit, the other emissions deemed to comply with the limit.

Test Mode	Channel	Polarization	Verdict
11G	HCH	Vertical	PASS



PK Result:

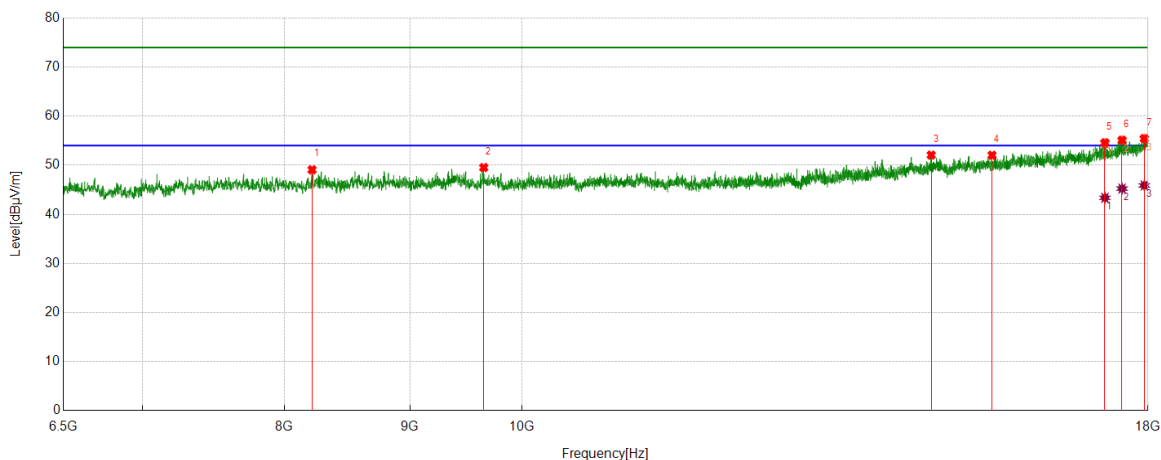
No.	Frequency	Reading Level	Correct Factor	Result	Limit	Margin	Remark
	[MHz]	[dBuV]	[dB/m]	[dBuV/m]	[dBuV/m]	[dB]	
1	7996.6246	43.55	5.39	48.94	74.00	-25.06	Vertical
2	10051.0689	42.76	6.64	49.40	74.00	-24.60	Vertical
3	14671.7715	39.28	12.71	51.99	74.00	-22.01	Vertical
4	15212.3390	39.75	13.45	53.20	74.00	-20.80	Vertical
5	17561.5077	37.64	17.79	55.43	74.00	-18.57	Vertical
6	17926.6783	35.89	19.37	55.26	74.00	-18.74	Vertical

AV Result:

No.	Frequency	Reading Level	Correct Factor	Result	Limit	Margin	Remark
	[MHz]	[dBuV]	[dB/m]	[dBuV/m]	[dBuV/m]	[dB]	
1	17561.5077	27.49	17.79	45.28	54.00	-8.72	Vertical
2	17926.6783	26.57	19.37	45.94	54.00	-8.06	Vertical

- Note: 1. Measurement = Reading Level + Correct Factor,
Correct Factor = Antenna Factor + Loss (Cable + Filter) – Amplifier Gain.
- If Peak Result complies with AV limit, AV Result is deemed to comply with AV limit.
 - Peak detector: RBW: 1 MHz, VBW: 3 MHz.
 - Average detector: RBW: 1 MHz, VBW: 1/T MHz(refer to clause 7.1.).
 - For above 3GHz part, filter losses were only considered in the spurious frequency bands and the authorized band was not corrected for HPF losses.
 - Only the worst case emission was recorded, if it complies with the limit, the other emissions deemed to comply with the limit.

Test Mode	Channel	Polarization	Verdict
11N HT20	LCH	Horizontal	PASS



PK Result:

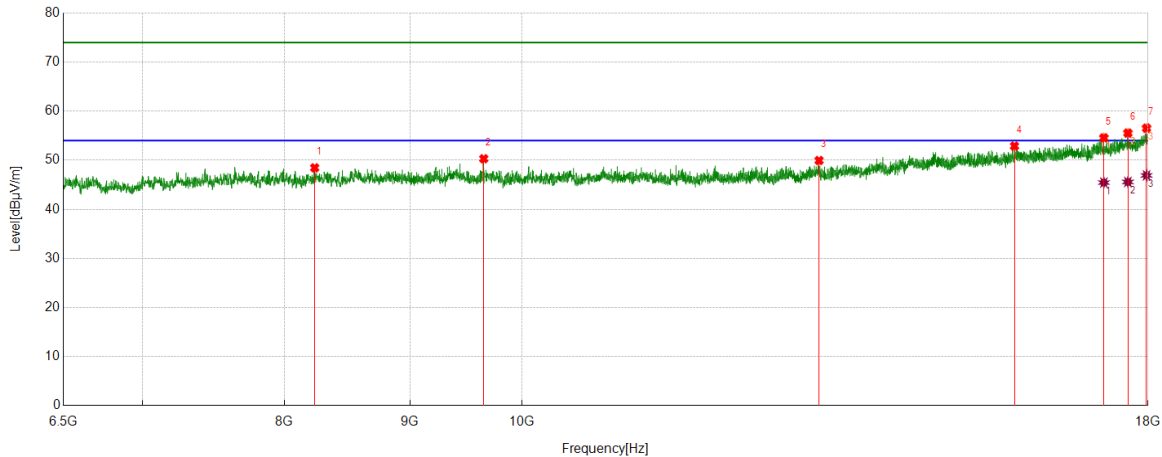
No.	Frequency	Reading Level	Correct Factor	Result	Limit	Margin	Remark
	[MHz]	[dBuV]	[dB/m]	[dBuV/m]	[dBuV/m]	[dB]	
1	8210.8389	43.19	5.89	49.08	74.00	-24.92	Horizontal
2	9647.0809	43.14	6.39	49.53	74.00	-24.47	Horizontal
3	14684.7106	39.26	12.81	52.07	74.00	-21.93	Horizontal
4	15548.7561	38.28	13.76	52.04	74.00	-21.96	Horizontal
5	17286.9109	37.60	16.98	54.58	74.00	-19.42	Horizontal
6	17567.2584	37.24	17.87	55.11	74.00	-18.89	Horizontal
7	17938.1798	36.00	19.43	55.43	74.00	-18.57	Horizontal

AV Result:

No.	Frequency	Reading Level	Correct Factor	Result	Limit	Margin	Remark
	[MHz]	[dBuV]	[dB/m]	[dBuV/m]	[dBuV/m]	[dB]	
1	17286.9109	26.39	16.98	43.37	54.00	-10.63	Horizontal
2	17567.2584	27.38	17.87	45.25	54.00	-8.75	Horizontal
3	17938.1798	26.46	19.43	45.89	54.00	-8.11	Horizontal

- Note: 1. Measurement = Reading Level + Correct Factor,
Correct Factor = Antenna Factor + Loss (Cable + Filter) – Amplifier Gain.
- If Peak Result complies with AV limit, AV Result is deemed to comply with AV limit.
 - Peak detector: RBW: 1 MHz, VBW: 3 MHz.
 - Average detector: RBW: 1 MHz, VBW: 1/T MHz(refer to clause 7.1.).
 - For above 3GHz part, filter losses were only considered in the spurious frequency bands and the authorized band was not corrected for HPF losses.
 - Only the worst case emission was recorded, if it complies with the limit, the other emissions deemed to comply with the limit.

Test Mode	Channel	Polarization	Verdict
11N HT20	LCH	Vertical	PASS



PK Result:

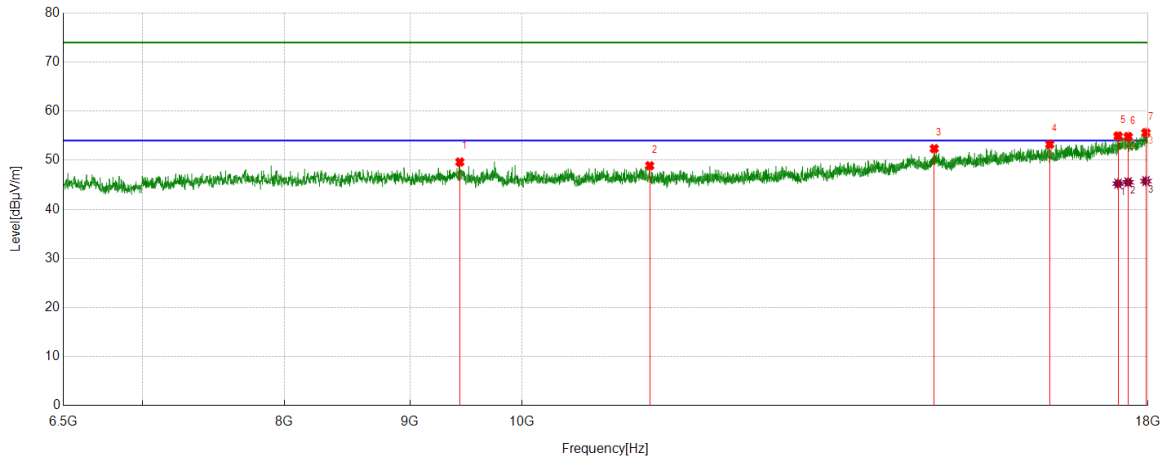
No.	Frequency	Reading Level	Correct Factor	Result	Limit	Margin	Remark
	[MHz]	[dBuV]	[dB/m]	[dBuV/m]	[dBuV/m]	[dB]	
1	8230.9664	42.40	6.06	48.46	74.00	-25.54	Vertical
2	9647.0809	43.92	6.39	50.31	74.00	-23.69	Vertical
3	13216.8396	39.93	10.02	49.95	74.00	-24.05	Vertical
4	15879.4224	38.16	14.73	52.89	74.00	-21.11	Vertical
5	17269.6587	37.68	16.89	54.57	74.00	-19.43	Vertical
6	17663.5829	37.48	18.07	55.55	74.00	-18.45	Vertical
7	17975.5594	36.81	19.73	56.54	74.00	-17.46	Vertical

AV Result:

No.	Frequency	Reading Level	Correct Factor	Result	Limit	Margin	Remark
	[MHz]	[dBuV]	[dB/m]	[dBuV/m]	[dBuV/m]	[dB]	
1	17269.6587	28.56	16.89	45.45	54.00	-8.55	Vertical
2	17663.5829	27.51	18.07	45.58	54.00	-8.42	Vertical
3	17975.5594	27.18	19.73	46.91	54.00	-7.09	Vertical

- Note: 1. Measurement = Reading Level + Correct Factor,
Correct Factor = Antenna Factor + Loss (Cable + Filter) – Amplifier Gain.
- If Peak Result complies with AV limit, AV Result is deemed to comply with AV limit.
 - Peak detector: RBW: 1 MHz, VBW: 3 MHz.
 - Average detector: RBW: 1 MHz, VBW: 1/T MHz(refer to clause 7.1.).
 - For above 3GHz part, filter losses were only considered in the spurious frequency bands and the authorized band was not corrected for HPF losses.
 - Only the worst case emission was recorded, if it complies with the limit, the other emissions deemed to comply with the limit.

Test Mode	Channel	Polarization	Verdict
11N HT20	MCH	Horizontal	PASS



PK Result:

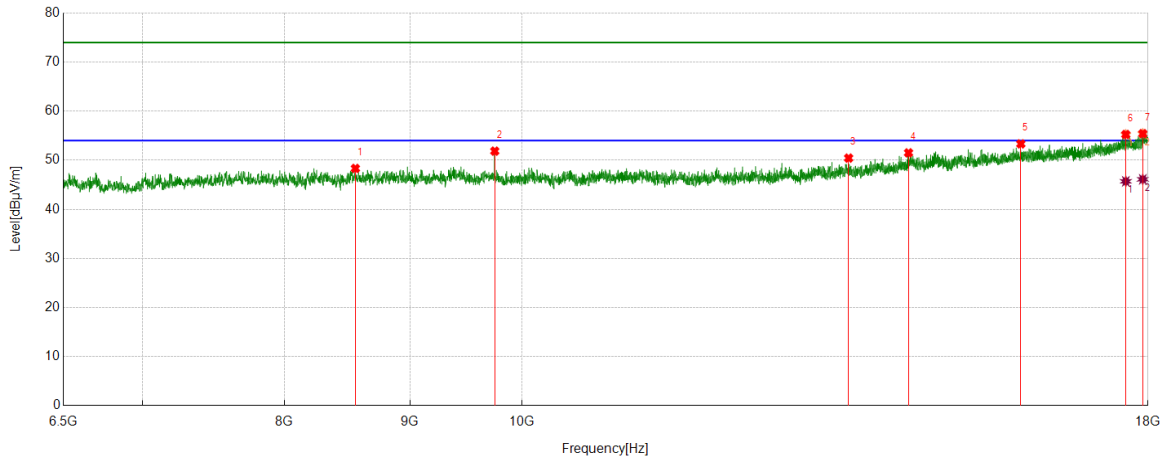
No.	Frequency	Reading Level	Correct Factor	Result	Limit	Margin	Remark
	[MHz]	[dBuV]	[dB/m]	[dBuV/m]	[dBuV/m]	[dB]	
1	9432.8666	43.05	6.60	49.65	74.00	-24.35	Horizontal
2	11274.5343	41.70	7.18	48.88	74.00	-25.12	Horizontal
3	14726.4033	39.57	12.80	52.37	74.00	-21.63	Horizontal
4	16414.2393	38.14	15.11	53.25	74.00	-20.75	Horizontal
5	17501.1251	37.32	17.62	54.94	74.00	-19.06	Horizontal
6	17667.8960	36.74	18.07	54.81	74.00	-19.19	Horizontal
7	17965.4957	35.99	19.63	55.62	74.00	-18.38	Horizontal

AV Result:

No.	Frequency	Reading Level	Correct Factor	Result	Limit	Margin	Remark
	[MHz]	[dBuV]	[dB/m]	[dBuV/m]	[dBuV/m]	[dB]	
1	17501.1251	27.61	17.62	45.23	54.00	-8.77	Horizontal
2	17667.8960	27.45	18.07	45.52	54.00	-8.48	Horizontal
3	17965.4957	26.12	19.63	45.75	54.00	-8.25	Horizontal

- Note: 1. Measurement = Reading Level + Correct Factor,
Correct Factor = Antenna Factor + Loss (Cable + Filter) – Amplifier Gain.
- If Peak Result complies with AV limit, AV Result is deemed to comply with AV limit.
 - Peak detector: RBW: 1 MHz, VBW: 3 MHz.
 - Average detector: RBW: 1 MHz, VBW: 1/T MHz(refer to clause 7.1.).
 - For above 3GHz part, filter losses were only considered in the spurious frequency bands and the authorized band was not corrected for HPF losses.
 - Only the worst case emission was recorded, if it complies with the limit, the other emissions deemed to comply with the limit.

Test Mode	Channel	Polarization	Verdict
11N HT20	MCH	Vertical	PASS



PK Result:

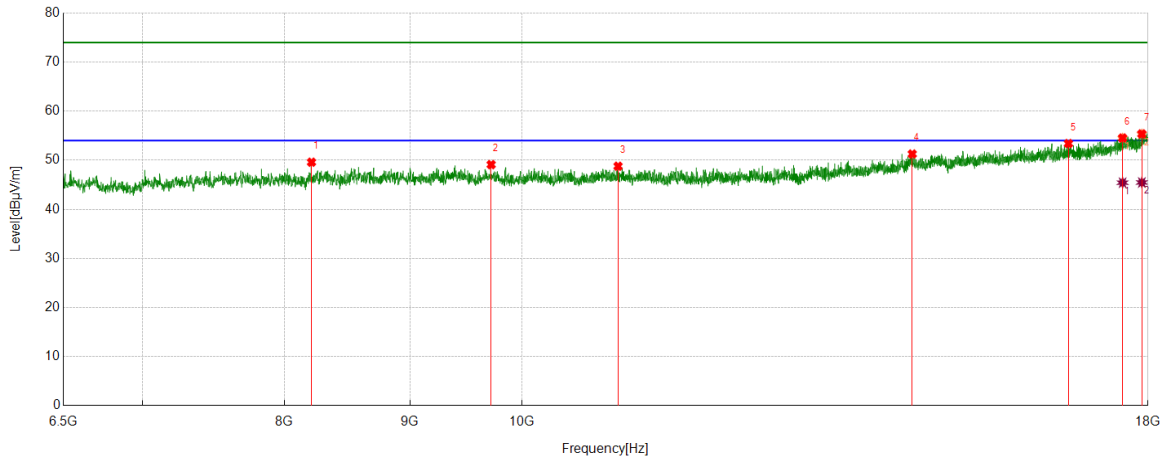
No.	Frequency	Reading Level	Correct Factor	Result	Limit	Margin	Remark
	[MHz]	[dBuV]	[dB/m]	[dBuV/m]	[dBuV/m]	[dB]	
1	8551.5689	41.91	6.42	48.33	74.00	-25.67	Vertical
2	9747.7185	45.38	6.48	51.86	74.00	-22.14	Vertical
3	13589.1986	39.69	10.75	50.44	74.00	-23.56	Vertical
4	14375.6095	38.83	12.68	51.51	74.00	-22.49	Vertical
5	15974.3093	38.84	14.49	53.33	74.00	-20.67	Vertical
6	17629.0786	37.20	18.05	55.25	74.00	-18.75	Vertical
7	17912.3015	36.14	19.28	55.42	74.00	-18.58	Vertical

AV Result:

No.	Frequency	Reading Level	Correct Factor	Result	Limit	Margin	Remark
	[MHz]	[dBuV]	[dB/m]	[dBuV/m]	[dBuV/m]	[dB]	
1	17629.0786	27.65	18.05	45.70	54.00	-8.30	Vertical
2	17912.3015	26.83	19.28	46.11	54.00	-7.89	Vertical

- Note: 1. Measurement = Reading Level + Correct Factor,
Correct Factor = Antenna Factor + Loss (Cable + Filter) – Amplifier Gain.
- If Peak Result complies with AV limit, AV Result is deemed to comply with AV limit.
 - Peak detector: RBW: 1 MHz, VBW: 3 MHz.
 - Average detector: RBW: 1 MHz, VBW: 1/T MHz(refer to clause 7.1.).
 - For above 3GHz part, filter losses were only considered in the spurious frequency bands and the authorized band was not corrected for HPF losses.
 - Only the worst case emission was recorded, if it complies with the limit, the other emissions deemed to comply with the limit.

Test Mode	Channel	Polarization	Verdict
11N HT20	HCH	Horizontal	PASS



PK Result:

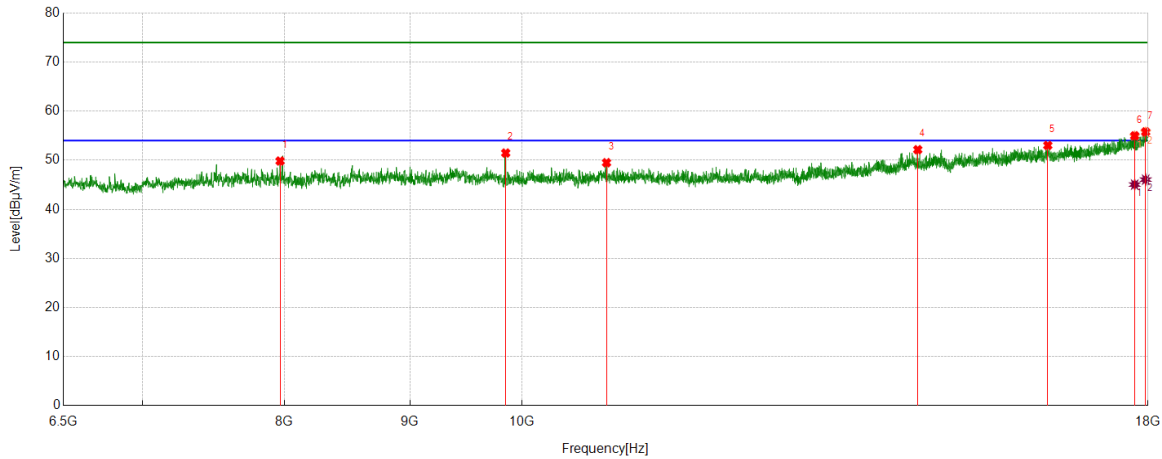
No.	Frequency	Reading Level	Correct Factor	Result	Limit	Margin	Remark
	[MHz]	[dBuV]	[dB/m]	[dBuV/m]	[dBuV/m]	[dB]	
1	8206.5258	43.63	5.97	49.60	74.00	-24.40	Horizontal
2	9714.6518	42.58	6.53	49.11	74.00	-24.89	Horizontal
3	10943.8680	41.52	7.26	48.78	74.00	-25.22	Horizontal
4	14425.9282	38.38	12.89	51.27	74.00	-22.73	Horizontal
5	16704.6506	37.49	15.91	53.40	74.00	-20.60	Horizontal
6	17575.8845	36.61	17.93	54.54	74.00	-19.46	Horizontal
7	17896.4871	36.13	19.23	55.36	74.00	-18.64	Horizontal

AV Result:

No.	Frequency	Reading Level	Correct Factor	Result	Limit	Margin	Remark
	[MHz]	[dBuV]	[dB/m]	[dBuV/m]	[dBuV/m]	[dB]	
1	17575.8845	27.50	17.93	45.43	54.00	-8.57	Horizontal
2	17896.4871	26.24	19.23	45.47	54.00	-8.53	Horizontal

- Note: 1. Measurement = Reading Level + Correct Factor,
Correct Factor = Antenna Factor + Loss (Cable + Filter) – Amplifier Gain.
- If Peak Result complies with AV limit, AV Result is deemed to comply with AV limit.
 - Peak detector: RBW: 1 MHz, VBW: 3 MHz.
 - Average detector: RBW: 1 MHz, VBW: 1/T MHz(refer to clause 7.1.).
 - For above 3GHz part, filter losses were only considered in the spurious frequency bands and the authorized band was not corrected for HPF losses.
 - Only the worst case emission was recorded, if it complies with the limit, the other emissions deemed to comply with the limit.

Test Mode	Channel	Polarization	Verdict
11N HT20	HCH	Vertical	PASS



PK Result:

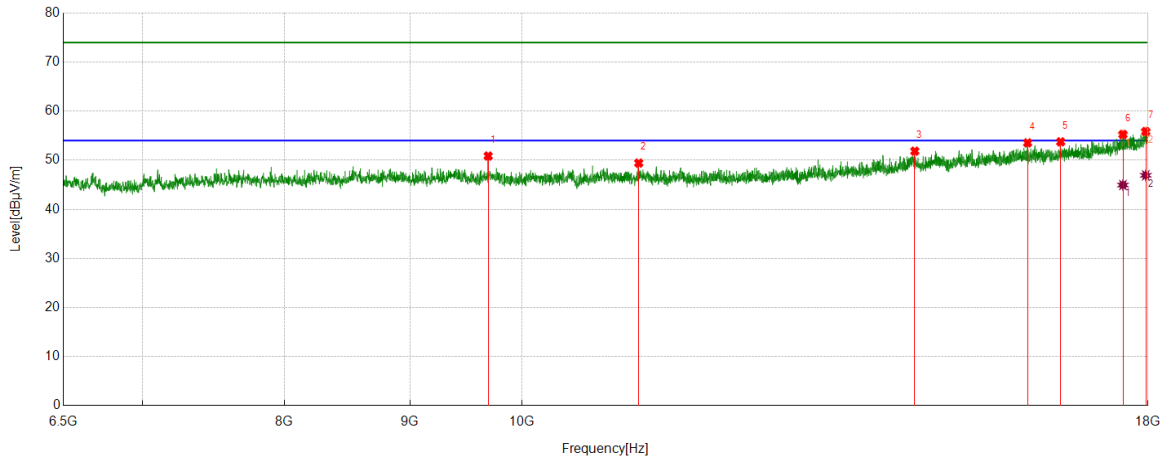
No.	Frequency	Reading Level	Correct Factor	Result	Limit	Margin	Remark
	[MHz]	[dBuV]	[dB/m]	[dBuV/m]	[dBuV/m]	[dB]	
1	7967.8710	44.33	5.51	49.84	74.00	-24.16	Vertical
2	9848.3560	44.96	6.51	51.47	74.00	-22.53	Vertical
3	10825.9782	42.48	7.02	49.50	74.00	-24.50	Vertical
4	14500.6876	39.34	12.81	52.15	74.00	-21.85	Vertical
5	16384.048	37.97	15.05	53.02	74.00	-20.98	Vertical
6	17777.1596	36.23	18.75	54.98	74.00	-19.02	Vertical
7	17961.1826	36.15	19.63	55.78	74.00	-18.22	Vertical

AV Result:

No.	Frequency	Reading Level	Correct Factor	Result	Limit	Margin	Remark
	[MHz]	[dBuV]	[dB/m]	[dBuV/m]	[dBuV/m]	[dB]	
1	17777.1596	26.29	18.75	45.04	54.00	-8.96	Vertical
2	17961.1826	26.42	19.63	46.05	54.00	-7.95	Vertical

- Note: 1. Measurement = Reading Level + Correct Factor,
Correct Factor = Antenna Factor + Loss (Cable + Filter) – Amplifier Gain.
- If Peak Result complies with AV limit, AV Result is deemed to comply with AV limit.
 - Peak detector: RBW: 1 MHz, VBW: 3 MHz.
 - Average detector: RBW: 1 MHz, VBW: 1/T MHz(refer to clause 7.1.).
 - For above 3GHz part, filter losses were only considered in the spurious frequency bands and the authorized band was not corrected for HPF losses.
 - Only the worst case emission was recorded, if it complies with the limit, the other emissions deemed to comply with the limit.

Test Mode	Channel	Polarization	Verdict
11N HT40	LCH	Horizontal	PASS



PK Result:

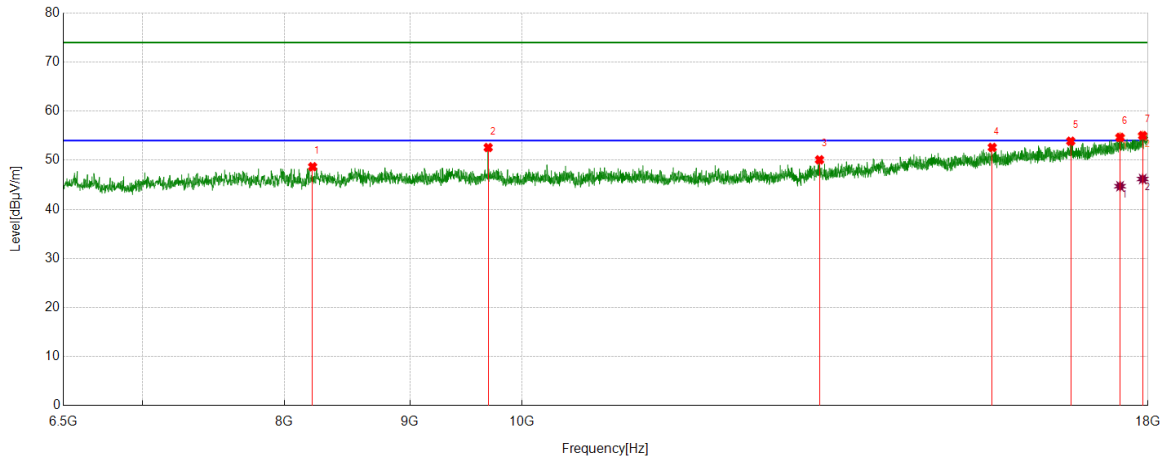
No.	Frequency	Reading Level	Correct Factor	Result	Limit	Margin	Remark
	[MHz]	[dBuV]	[dB/m]	[dBuV/m]	[dBuV/m]	[dB]	
1	9687.3359	44.35	6.51	50.86	74.00	-23.14	Horizontal
2	11158.0823	42.18	7.24	49.42	74.00	-24.58	Horizontal
3	14460.4326	39.03	12.82	51.85	74.00	-22.15	Horizontal
4	16076.3845	38.93	14.61	53.54	74.00	-20.46	Horizontal
5	16583.8855	37.86	15.89	53.75	74.00	-20.25	Horizontal
6	17581.6352	37.30	17.96	55.26	74.00	-18.74	Horizontal
7	17962.6203	36.22	19.63	55.85	74.00	-18.15	Horizontal

AV Result:

No.	Frequency	Reading Level	Correct Factor	Result	Limit	Margin	Remark
	[MHz]	[dBuV]	[dB/m]	[dBuV/m]	[dBuV/m]	[dB]	
1	17581.6352	26.99	17.96	44.95	54.00	-9.05	Horizontal
2	17962.6203	27.30	19.63	46.93	54.00	-7.07	Horizontal

- Note: 1. Measurement = Reading Level + Correct Factor,
Correct Factor = Antenna Factor + Loss (Cable + Filter) – Amplifier Gain.
2. If Peak Result complies with AV limit, AV Result is deemed to comply with AV limit.
3. Peak detector: RBW: 1 MHz, VBW: 3 MHz.
4. Average detector: RBW: 1 MHz, VBW: 1/T MHz(refer to clause 7.1.).
5. For above 3GHz part, filter losses were only considered in the spurious frequency bands and the authorized band was not corrected for HPF losses.
6. Only the worst case emission was recorded, if it complies with the limit, the other emissions deemed to comply with the limit.

Test Mode	Channel	Polarization	Verdict
11N HT40	LCH	Vertical	PASS



PK Result:

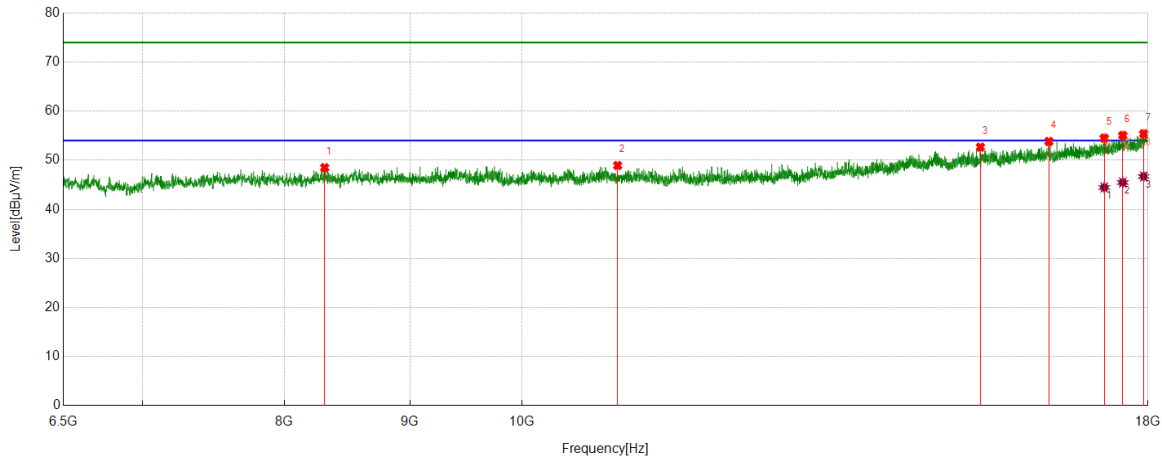
No.	Frequency	Reading Level	Correct Factor	Result	Limit	Margin	Remark
	[MHz]	[dBuV]	[dB/m]	[dBuV/m]	[dBuV/m]	[dB]	
1	8215.1519	42.66	6.01	48.67	74.00	-25.33	Vertical
2	9687.3359	46.08	6.51	52.59	74.00	-21.41	Vertical
3	13222.5903	40.10	9.99	50.09	74.00	-23.91	Vertical
4	15551.6315	38.87	13.74	52.61	74.00	-21.39	Vertical
5	16740.5926	37.94	15.94	53.88	74.00	-20.12	Vertical
6	17534.1918	37.04	17.62	54.66	74.00	-19.34	Vertical
7	17910.8639	35.76	19.26	55.02	74.00	-18.98	Vertical

AV Result:

No.	Frequency	Reading Level	Correct Factor	Result	Limit	Margin	Remark
	[MHz]	[dBuV]	[dB/m]	[dBuV/m]	[dBuV/m]	[dB]	
1	17534.1918	27.09	17.62	44.71	54.00	-9.29	Vertical
2	17910.8639	26.92	19.26	46.18	54.00	-7.82	Vertical

- Note: 1. Measurement = Reading Level + Correct Factor,
Correct Factor = Antenna Factor + Loss (Cable + Filter) – Amplifier Gain.
- If Peak Result complies with AV limit, AV Result is deemed to comply with AV limit.
 - Peak detector: RBW: 1 MHz, VBW: 3 MHz.
 - Average detector: RBW: 1 MHz, VBW: 1/T MHz(refer to clause 7.1.).
 - For above 3GHz part, filter losses were only considered in the spurious frequency bands and the authorized band was not corrected for HPF losses.
 - Only the worst case emission was recorded, if it complies with the limit, the other emissions deemed to comply with the limit.

Test Mode	Channel	Polarization	Verdict
11N HT40	MCH	Horizontal	PASS



PK Result:

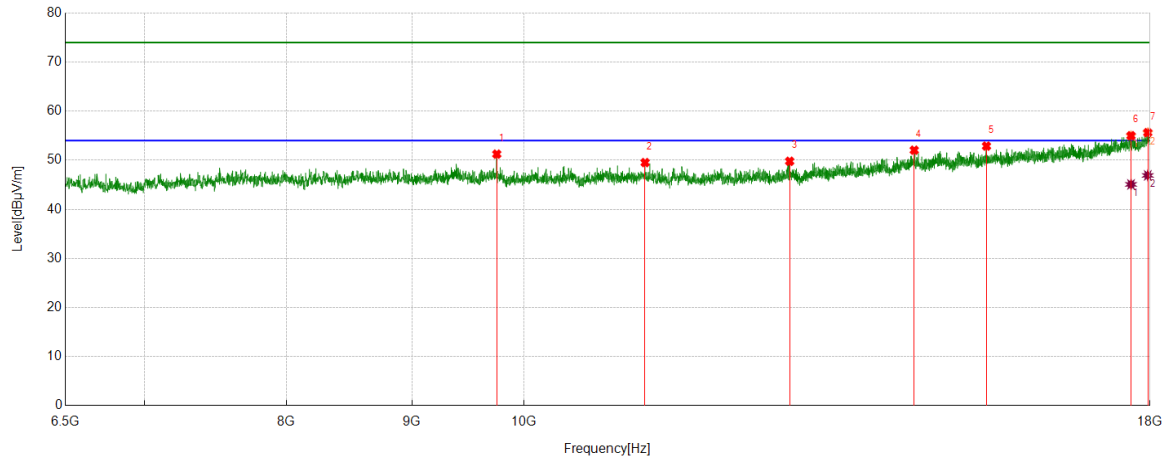
No.	Frequency	Reading Level	Correct Factor	Result	Limit	Margin	Remark
	[MHz]	[dBuV]	[dB/m]	[dBuV/m]	[dBuV/m]	[dB]	
1	8308.6011	42.16	6.34	48.50	74.00	-25.50	Horizontal
2	10939.5549	41.66	7.27	48.93	74.00	-25.07	Horizontal
3	15379.1099	39.00	13.68	52.68	74.00	-21.32	Horizontal
4	16401.3002	38.80	15.03	53.83	74.00	-20.17	Horizontal
5	17275.4094	37.62	16.90	54.52	74.00	-19.48	Horizontal
6	17578.7598	37.11	17.95	55.06	74.00	-18.94	Horizontal
7	17928.116	36.04	19.36	55.40	74.00	-18.60	Horizontal

AV Result:

No.	Frequency	Reading Level	Correct Factor	Result	Limit	Margin	Remark
	[MHz]	[dBuV]	[dB/m]	[dBuV/m]	[dBuV/m]	[dB]	
1	17275.4094	27.55	16.90	44.45	54.00	-9.55	Horizontal
2	17578.7598	27.51	17.95	45.46	54.00	-8.54	Horizontal
3	17928.1160	27.33	19.36	46.69	54.00	-7.31	Horizontal

- Note: 1. Measurement = Reading Level + Correct Factor,
Correct Factor = Antenna Factor + Loss (Cable + Filter) – Amplifier Gain.
- If Peak Result complies with AV limit, AV Result is deemed to comply with AV limit.
 - Peak detector: RBW: 1 MHz, VBW: 3 MHz.
 - Average detector: RBW: 1 MHz, VBW: 1/T MHz(refer to clause 7.1.).
 - For above 3GHz part, filter losses were only considered in the spurious frequency bands and the authorized band was not corrected for HPF losses.
 - Only the worst case emission was recorded, if it complies with the limit, the other emissions deemed to comply with the limit.

Test Mode	Channel	Polarization	Verdict
11N HT40	MCH	Vertical	PASS



PK Result:

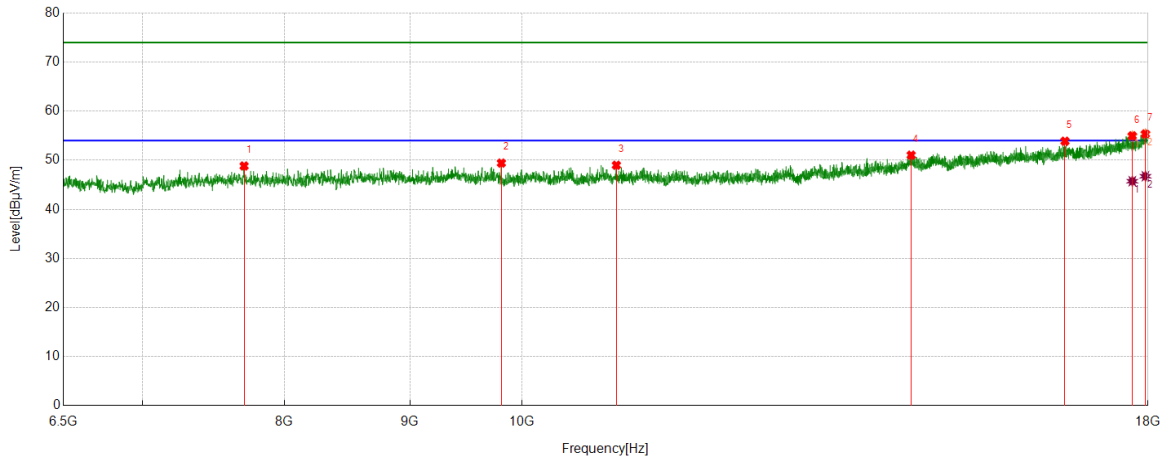
No.	Frequency	Reading Level	Correct Factor	Result	Limit	Margin	Remark
	[MHz]	[dBuV]	[dB/m]	[dBuV/m]	[dBuV/m]	[dB]	
1	9747.7185	44.77	6.48	51.25	74.00	-22.75	Vertical
2	11204.088	42.19	7.33	49.52	74.00	-24.48	Vertical
3	12832.9791	40.72	9.07	49.79	74.00	-24.21	Vertical
4	14425.9282	39.16	12.89	52.05	74.00	-21.95	Vertical
5	15438.0548	38.99	13.89	52.88	74.00	-21.12	Vertical
6	17682.2728	36.88	18.12	55.00	74.00	-19.00	Vertical
7	17962.6203	36.00	19.63	55.63	74.00	-18.37	Vertical

AV Result:

No.	Frequency	Reading Level	Correct Factor	Result	Limit	Margin	Remark
	[MHz]	[dBuV]	[dB/m]	[dBuV/m]	[dBuV/m]	[dB]	
1	17682.2728	26.96	18.12	45.08	54.00	-8.92	Vertical
2	17962.6203	27.28	19.63	46.91	54.00	-7.09	Vertical

- Note: 1. Measurement = Reading Level + Correct Factor,
Correct Factor = Antenna Factor + Loss (Cable + Filter) – Amplifier Gain.
- If Peak Result complies with AV limit, AV Result is deemed to comply with AV limit.
 - Peak detector: RBW: 1 MHz, VBW: 3 MHz.
 - Average detector: RBW: 1 MHz, VBW: 1/T MHz(refer to clause 7.1.).
 - For above 3GHz part, filter losses were only considered in the spurious frequency bands and the authorized band was not corrected for HPF losses.
 - Only the worst case emission was recorded, if it complies with the limit, the other emissions deemed to comply with the limit.

Test Mode	Channel	Polarization	Verdict
11N HT40	HCH	Horizontal	PASS



PK Result:

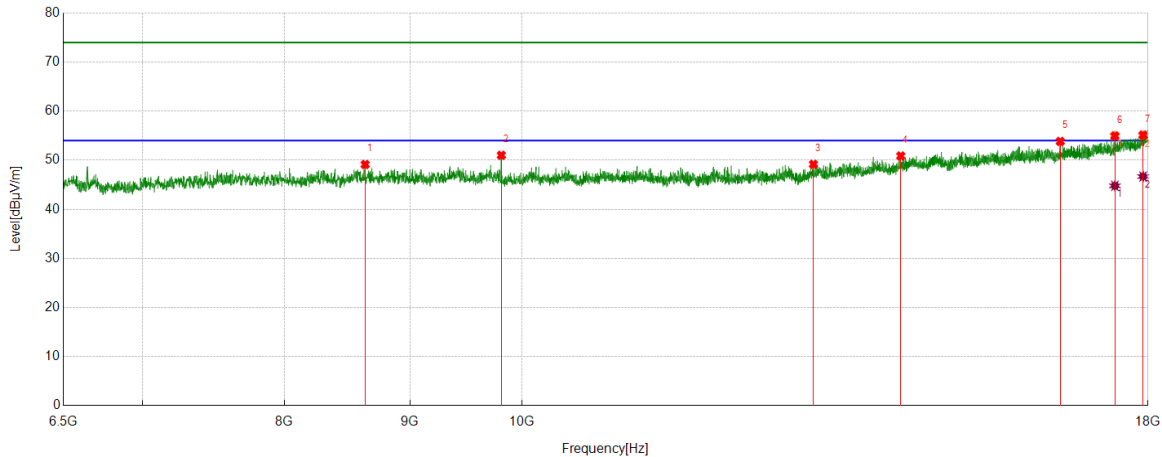
No.	Frequency	Reading Level	Correct Factor	Result	Limit	Margin	Remark
	[MHz]	[dBuV]	[dB/m]	[dBuV/m]	[dBuV/m]	[dB]	
1	7703.3379	43.36	5.47	48.83	74.00	-25.17	Horizontal
2	9808.1010	43.05	6.37	49.42	74.00	-24.58	Horizontal
3	10926.6158	41.72	7.26	48.98	74.00	-25.02	Horizontal
4	14411.5514	38.14	12.89	51.03	74.00	-22.97	Horizontal
5	16650.0188	38.17	15.70	53.87	74.00	-20.13	Horizontal
6	17736.9046	36.44	18.53	54.97	74.00	-19.03	Horizontal
7	17956.8696	35.77	19.59	55.36	74.00	-18.64	Horizontal

AV Result:

No.	Frequency	Reading Level	Correct Factor	Result	Limit	Margin	Remark
	[MHz]	[dBuV]	[dB/m]	[dBuV/m]	[dBuV/m]	[dB]	
1	17736.9046	27.20	18.53	45.73	54.00	-8.27	Horizontal
2	17956.8696	27.15	19.59	46.74	54.00	-7.26	Horizontal

- Note: 1. Measurement = Reading Level + Correct Factor,
Correct Factor = Antenna Factor + Loss (Cable + Filter) – Amplifier Gain.
2. If Peak Result complies with AV limit, AV Result is deemed to comply with AV limit.
3. Peak detector: RBW: 1 MHz, VBW: 3 MHz.
4. Average detector: RBW: 1 MHz, VBW: 1/T MHz(refer to clause 7.1.).
5. For above 3GHz part, filter losses were only considered in the spurious frequency bands and the authorized band was not corrected for HPF losses.
6. Only the worst case emission was recorded, if it complies with the limit, the other emissions deemed to comply with the limit.

Test Mode	Channel	Polarization	Verdict
11N HT40	HCH	Vertical	PASS



PK Result:

No.	Frequency	Reading Level	Correct Factor	Result	Limit	Margin	Remark
	[MHz]	[dBuV]	[dB/m]	[dBuV/m]	[dBuV/m]	[dB]	
1	8630.6413	42.55	6.58	49.13	74.00	-24.87	Vertical
2	9808.1010	44.64	6.37	51.01	74.00	-22.99	Vertical
3	13147.8310	39.39	9.78	49.17	74.00	-24.83	Vertical
4	14270.6588	38.80	12.08	50.88	74.00	-23.12	Vertical
5	16576.6971	38.00	15.83	53.83	74.00	-20.17	Vertical
6	17449.3687	37.37	17.59	54.96	74.00	-19.04	Vertical
7	17918.0523	35.81	19.33	55.14	74.00	-18.86	Vertical

AV Result:

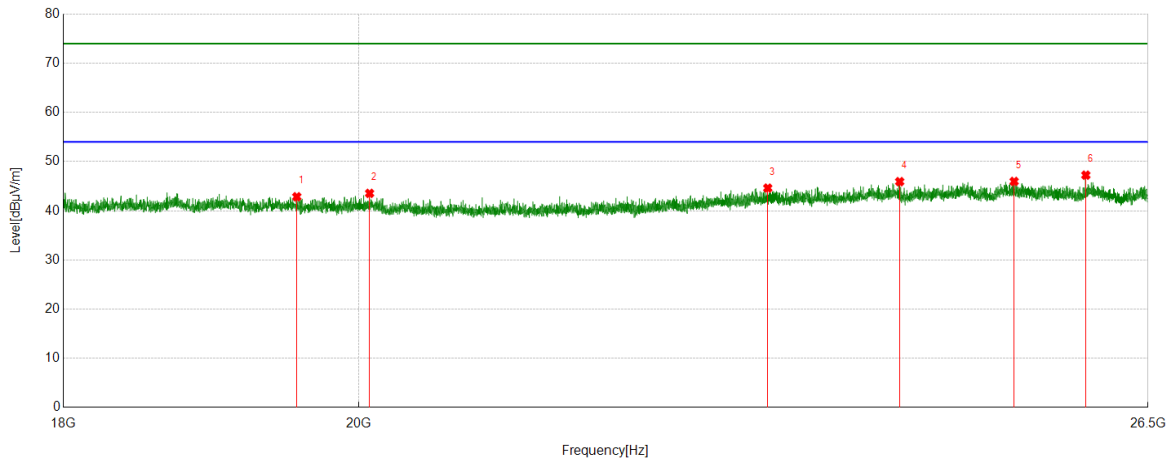
No.	Frequency	Reading Level	Correct Factor	Result	Limit	Margin	Remark
	[MHz]	[dBuV]	[dB/m]	[dBuV/m]	[dBuV/m]	[dB]	
1	17449.3687	27.20	17.59	44.79	54.00	-9.21	Vertical
2	17918.0523	27.35	19.33	46.68	54.00	-7.32	Vertical

- Note: 1. Measurement = Reading Level + Correct Factor,
Correct Factor = Antenna Factor + Loss (Cable + Filter) – Amplifier Gain.
- If Peak Result complies with AV limit, AV Result is deemed to comply with AV limit.
 - Peak detector: RBW: 1 MHz, VBW: 3 MHz.
 - Average detector: RBW: 1 MHz, VBW: 1/T MHz(refer to clause 7.1.).
 - For above 3GHz part, filter losses were only considered in the spurious frequency bands and the authorized band was not corrected for HPF losses.
 - Only the worst case emission was recorded, if it complies with the limit, the other emissions deemed to comply with the limit.

Part 3: 18GHz~26.5GHz

SPURIOUS EMISSIONS 18GHz TO 26.5GHz (WORST-CASE CONFIGURATION)

Test Mode	Channel	Polarization	Verdict
11B	LCH	Horizontal	PASS

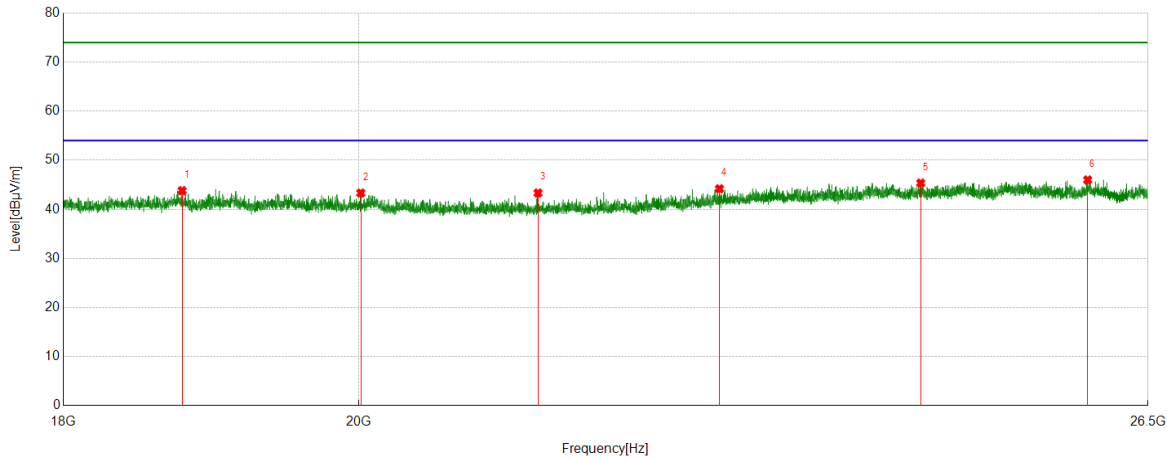


PK Result:

No.	Frequency	Reading Level	Correct Factor	Result	Limit	Margin	Remark
	[MHz]	[dBuV]	[dB/m]	[dBuV/m]	[dBuV/m]	[dB]	
1	19563.3063	48.29	-5.44	42.85	74.00	-31.15	Horizontal
2	20077.6078	48.67	-5.13	43.54	74.00	-30.46	Horizontal
3	23140.4640	48.06	-3.45	44.61	74.00	-29.39	Horizontal
4	24254.9255	48.76	-2.84	45.92	74.00	-28.08	Horizontal
5	25264.8265	49.31	-3.34	45.97	74.00	-28.03	Horizontal
6	25919.3919	50.00	-2.76	47.24	74.00	-26.76	Horizontal

- Note: 1. If Peak Result complies with AV limit, AV Result is deemed to comply with AV limit.
 2. Test setup: RBW: 1 MHz, VBW: 3 MHz, Sweep time: auto.
 3. Measurement = Reading Level + Correct Factor,
 Correct Factor = Antenna Factor + Loss (Cable) – Amplifier Gain.
 4. Only the worst case emission was recorded, if it complies with the limit, the other emissions deemed to comply with the limit.

Test Mode	Channel	Polarization	Verdict
11B	LCH	Vertical	PASS



PK Result:

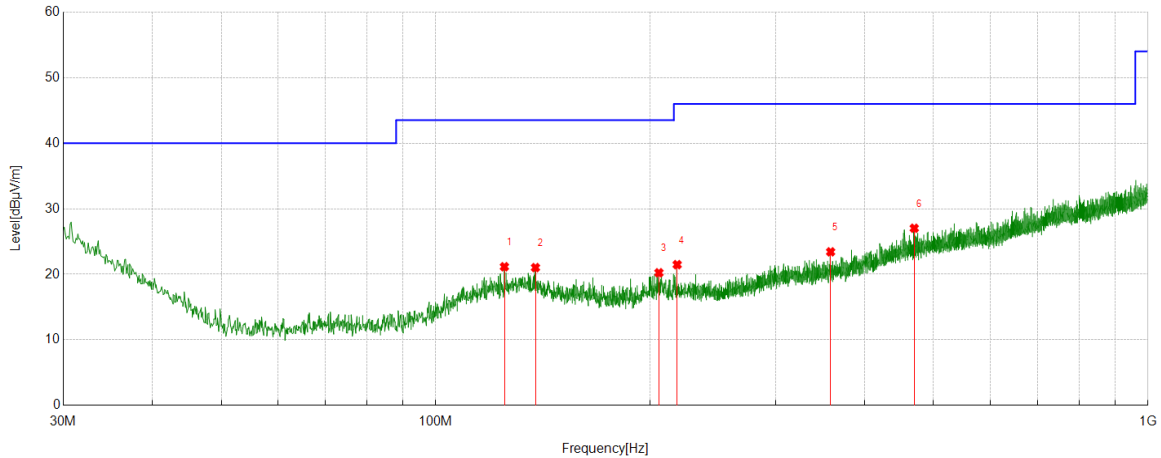
No.	Frequency	Reading Level	Correct Factor	Result	Limit	Margin	Remark
	[MHz]	[dBuV]	[dB/m]	[dBuV/m]	[dBuV/m]	[dB]	
1	18779.5280	50.00	-6.20	43.80	74.00	-30.20	Vertical
2	20014.7015	48.38	-5.06	43.32	74.00	-30.68	Vertical
3	21320.4320	49.22	-5.89	43.33	74.00	-30.67	Vertical
4	22745.1745	48.24	-4.06	44.18	74.00	-29.82	Vertical
5	24437.6938	48.30	-2.95	45.35	74.00	-28.65	Vertical
6	25936.3936	48.73	-2.74	45.99	74.00	-28.01	Vertical

- Note: 1. If Peak Result complies with AV limit, AV Result is deemed to comply with AV limit.
 2. Test setup: RBW: 1 MHz, VBW: 3 MHz, Sweep time: auto.
 3. Measurement = Reading Level + Correct Factor,
 Correct Factor = Antenna Factor + Loss (Cable) – Amplifier Gain.
 4. Only the worst case emission was recorded, if it complies with the limit, the other emissions deemed to comply with the limit.

Part 4: 30MHz~1GHz

SPURIOUS EMISSIONS 30M TO 1GHz (WORST-CASE CONFIGURATION)

Test Mode	Channel	Polarization	Verdict
11B	LCH	Horizontal	PASS



No.	Frequency	Reading Level	Correct Factor	Result	Limit	Margin	Remark
	[MHz]	[dBuV]	[dB/m]	[dBuV/m]	[dBuV/m]	[dB]	
1	124.8755	0.55	20.61	21.16	43.50	-22.34	Peak
2	138.0688	0.59	20.44	21.03	43.50	-22.47	Peak
3	205.7816	0.58	19.66	20.24	43.50	-23.26	Peak
4	218.2958	1.98	19.50	21.48	46.00	-24.52	Peak
5	358.4748	1.17	22.26	23.43	46.00	-22.57	Peak
6	469.7450	1.62	25.41	27.03	46.00	-18.97	Peak

Note: 1. If Peak Result complies with QP limit, QP Result is deemed to comply with QP limit.
 2. Test setup: RBW: 120 kHz, VBW: 300 kHz, Sweep time: auto.
 3. Measurement = Reading Level + Correct Factor,
 Correct Factor = Antenna Factor + Loss (Cable).