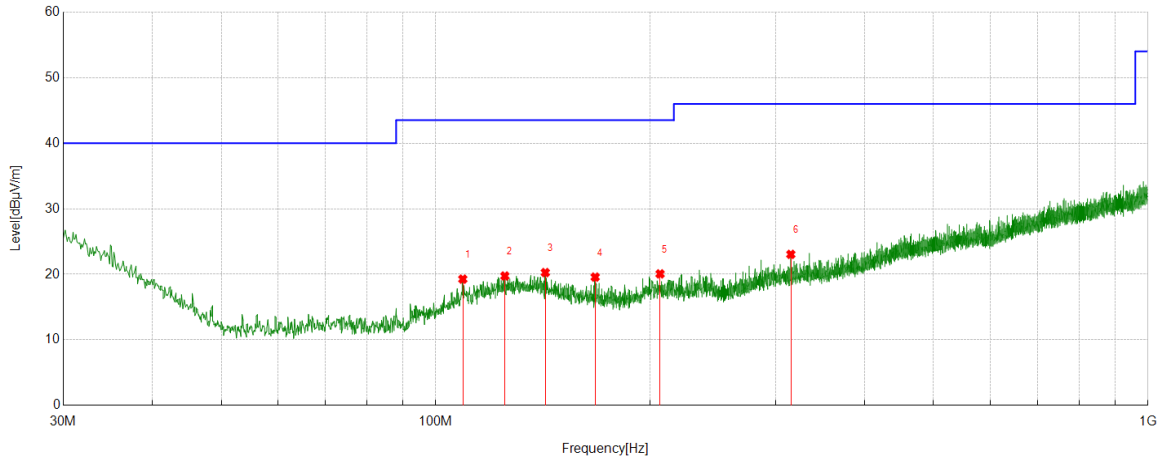


**Part 4: 30MHz~1GHz**

**SPURIOUS EMISSIONS 30M TO 1GHz (WORST-CASE CONFIGURATION)**

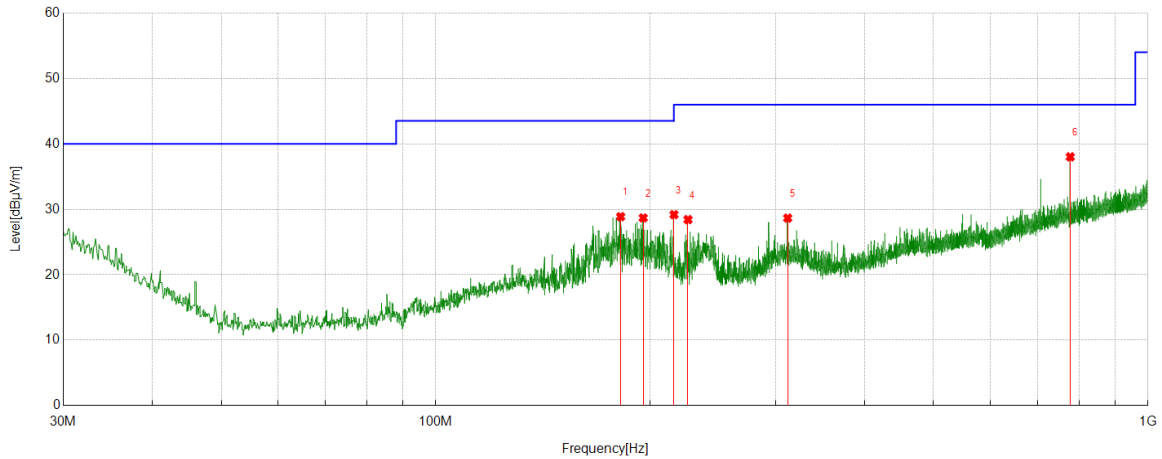
Test Mode	Channel	Polarization	Verdict
11B	MCH	Horizontal	PASS



No.	Frequency	Reading Level	Correct Factor	Result	Limit	Margin	Remark
	[MHz]	[dBuV]	[dB/m]	[dBuV/m]	[dBuV/m]	[dB]	
1	109.1599	0.29	18.98	19.27	43.50	-24.23	Peak
2	125.0695	-0.88	20.63	19.75	43.50	-23.75	Peak
3	142.5313	0.19	20.08	20.27	43.50	-23.23	Peak
4	167.4627	0.86	18.72	19.58	43.50	-23.92	Peak
5	206.5577	0.42	19.65	20.07	43.50	-23.43	Peak
6	315.2085	1.75	21.30	23.05	46.00	-22.95	Peak

Note: 1. If Peak Result complies with QP limit, QP Result is deemed to comply with QP limit.  
 2. Test setup: RBW: 120 kHz, VBW: 300 kHz, Sweep time: auto.  
 3. Measurement = Reading Level + Correct Factor,  
 Correct Factor = Antenna Factor + Loss (Cable).

Test Mode	Channel	Polarization	Verdict
11B	MCH	Vertical	PASS



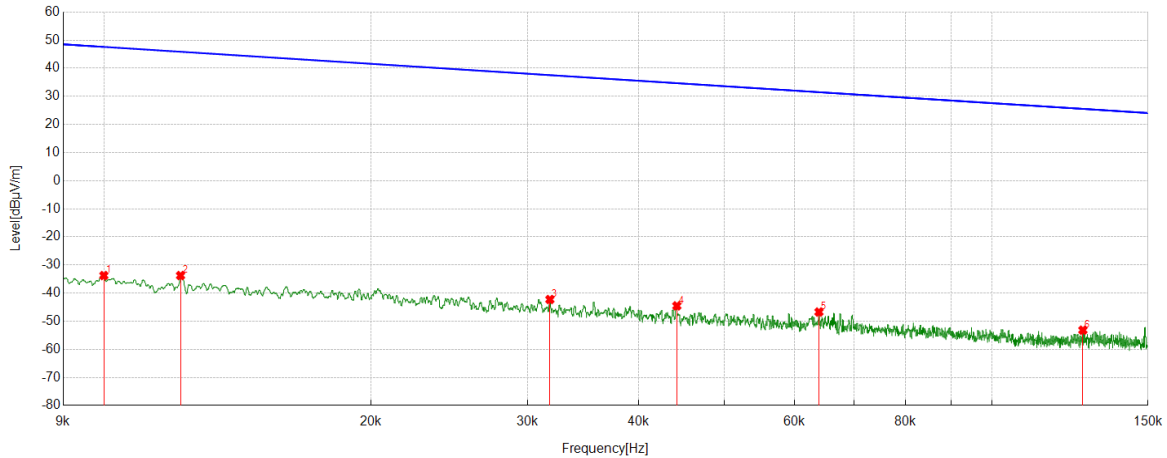
No.	Frequency	Reading Level	Correct Factor	Result	Limit	Margin	Remark
	[MHz]	[dBuV]	[dB/m]	[dBuV/m]	[dBuV/m]	[dB]	
1	181.8202	10.67	18.21	28.88	43.50	-14.62	Peak
2	195.5956	9.55	19.14	28.69	43.50	-14.81	Peak
3	216.0646	9.67	19.52	29.19	46.00	-16.81	Peak
4	226.0566	9.02	19.41	28.43	46.00	-17.57	Peak
5	312.0072	7.42	21.24	28.66	46.00	-17.34	Peak
6	777.8478	8.00	30.02	38.02	46.00	-7.98	Peak

Note: 1. If Peak Result complies with QP limit, QP Result is deemed to comply with QP limit.  
 2. Test setup: RBW: 120 kHz, VBW: 300 kHz, Sweep time: auto.  
 3. Measurement = Reading Level + Correct Factor,  
 Correct Factor = Antenna Factor + Loss (Cable).

**Part 5: 9kHz~30MHz**

**SPURIOUS EMISSIONS Below 30MHz (WORST CASE CONFIGURATION-FACE ON)**

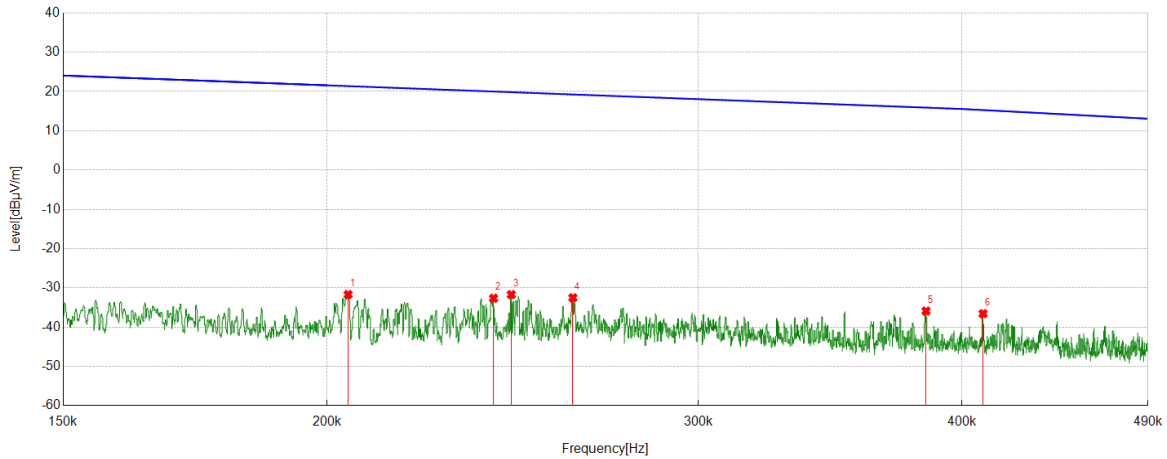
Test Mode	Channel	Frequency Range	Verdict
11B	MCH	9kHz~150kHz	PASS



No.	Frequency	Reading Level	Correct Factor	FCC Result	FCC Limit	ISED Result	ISED Limit	Margin	Remark
	[MHz]	[dBuV]	[dB/m]	[dBuV/m]	[dBuV/m]	[dBuA/m]	[dBuA/m]	[dB]	
1	0.0100	28.24	-62.00	-33.76	47.64	-85.26	-3.86	-81.40	Peak
2	0.0122	28.22	-61.98	-33.76	45.84	-85.26	-5.66	-79.60	Peak
3	0.0318	19.51	-61.80	-42.29	37.55	-93.79	-13.95	-79.84	Peak
4	0.0442	17.25	-61.80	-44.55	34.70	-96.05	-16.80	-79.25	Peak
5	0.0639	15.13	-61.86	-46.73	31.49	-98.23	-20.01	-78.22	Peak
6	0.1267	8.72	-61.92	-53.20	25.55	-104.70	-25.95	-78.75	Peak

- Note: 1. Measurement = Reading Level + Correct Factor,  
Correct Factor = Antenna Factor + Loss (Cable) + Distance Factor.  
2. If Peak Result complies with AV and QP limit, AV and QP Result are deemed to comply with AV limit.  
3. All 3 polarizations(Horizontal, Face-on and Face-off) of the loop antenna had been tested, but only the worst data recorded in the report.

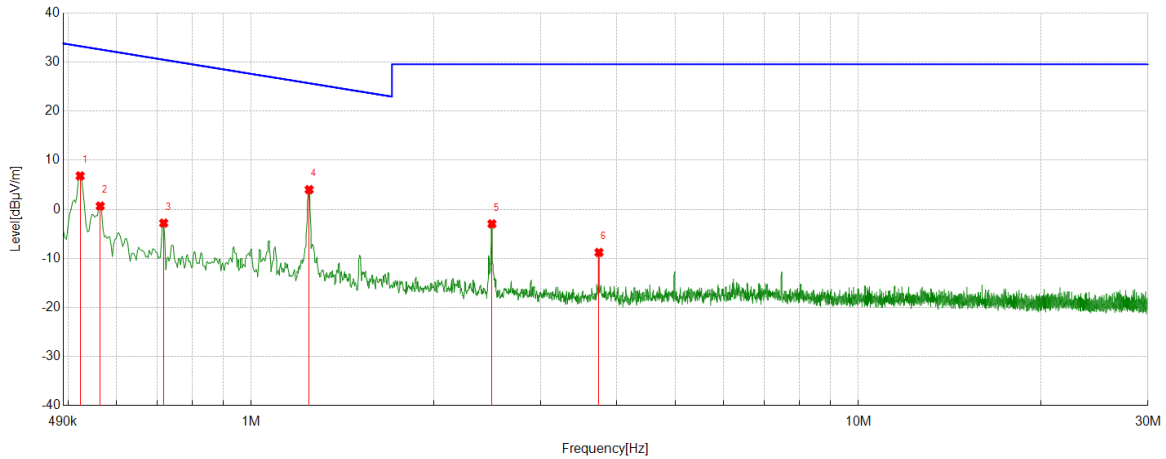
Test Mode	Channel	Frequency Range	Verdict
11B	MCH	150kHz~490kHz	PASS



No.	Frequency	Reading Level	Correct Factor	FCC Result	FCC Limit	ISED Result	ISED Limit	Margin	Remark
	[MHz]	[dBuV]	[dB/m]	[dBuV/m]	[dBuV/m]	[dBuA/m]	[dBuA/m]	[dB]	
1	0.2047	30.27	-61.97	-31.70	21.38	-83.20	-30.12	-53.08	Peak
2	0.2399	29.35	-61.99	-32.64	20.00	-84.14	-31.50	-52.64	Peak
3	0.2446	30.27	-61.99	-31.72	19.83	-83.22	-31.67	-51.55	Peak
4	0.2616	29.48	-62.00	-32.52	19.25	-84.02	-32.25	-51.77	Peak
5	0.3846	26.13	-62.04	-35.91	15.90	-87.41	-35.60	-51.81	Peak
6	0.4093	25.47	-62.04	-36.57	15.28	-88.07	-36.22	-51.85	Peak

- Note: 1. Measurement = Reading Level + Correct Factor,  
Correct Factor = Antenna Factor + Loss (Cable) + Distance Factor.
2. If Peak Result complies with AV and QP limit, AV and QP Result are deemed to comply with AV limit.
3. All 3 polarizations(Horizontal, Face-on and Face-off) of the loop antenna had been tested, but only the worst data recorded in the report.

Test Mode	Channel	Frequency Range	Verdict
11B	MCH	490kHz~30MHz	PASS



No.	Frequency	Reading Level	Correct Factor	FCC Result	FCC Limit	ISED Result	ISED Limit	Margin	Remark
	[MHz]	[dBuV]	[dB/m]	[dBuV/m]	[dBuV/m]	[dBuA/m]	[dBuA/m]		
1	0.5225	28.90	-22.09	6.81	33.24	-44.69	-18.26	-26.43	Peak
2	0.5638	22.75	-22.09	0.66	32.58	-50.84	-18.92	-31.92	Peak
3	0.7173	19.26	-22.07	-2.81	30.49	-54.31	-21.01	-33.30	Peak
4	1.2455	26.06	-22.05	4.01	25.70	-47.49	-25.80	-21.69	Peak
5	2.4910	19.05	-22.01	-2.96	29.54	-54.46	-21.96	-32.50	Peak
6	3.7394	13.17	-21.96	-8.79	29.54	-60.29	-21.96	-38.33	Peak

- Note: 1. Measurement = Reading Level + Correct Factor,  
Correct Factor = Antenna Factor + Loss (Cable) + Distance Factor.
2. If Peak Result complies with AV and QP limit, AV and QP Result are deemed to comply with AV limit.
3. All 3 polarizations(Horizontal, Face-on and Face-off) of the loop antenna had been tested, but only the worst data recorded in the report.

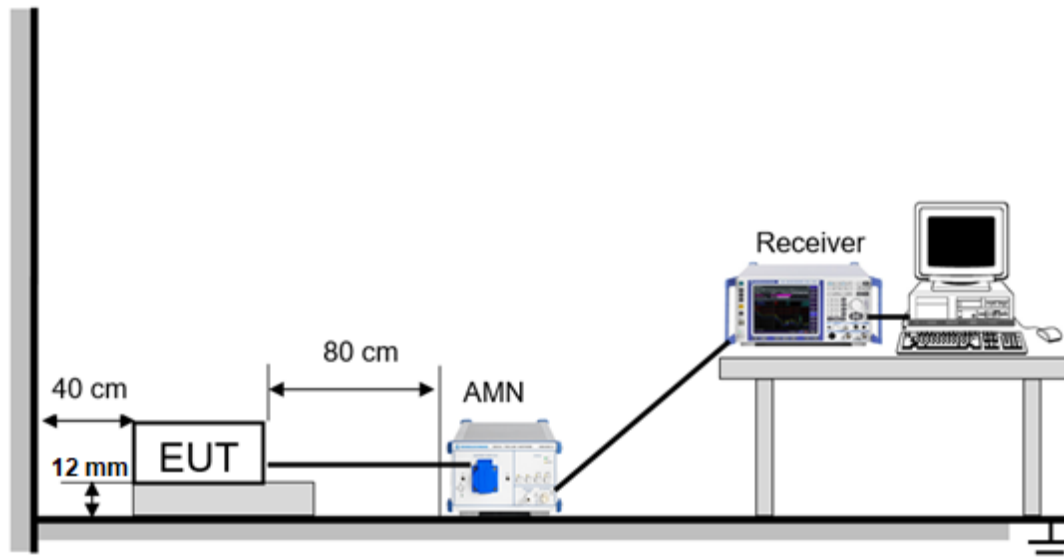
## 9. AC POWER LINE CONDUCTED EMISSIONS

### LIMITS

Please refer to FCC §15.207 (a)

FREQUENCY (MHz)	Limit (dBuV)	
	Quasi-peak	Average
0.15 -0.5	66 - 56 *	56 - 46 *
0.50 -5.0	56.00	46.00
5.0 -30.0	60.00	50.00

### TEST SETUP AND PROCEDURE



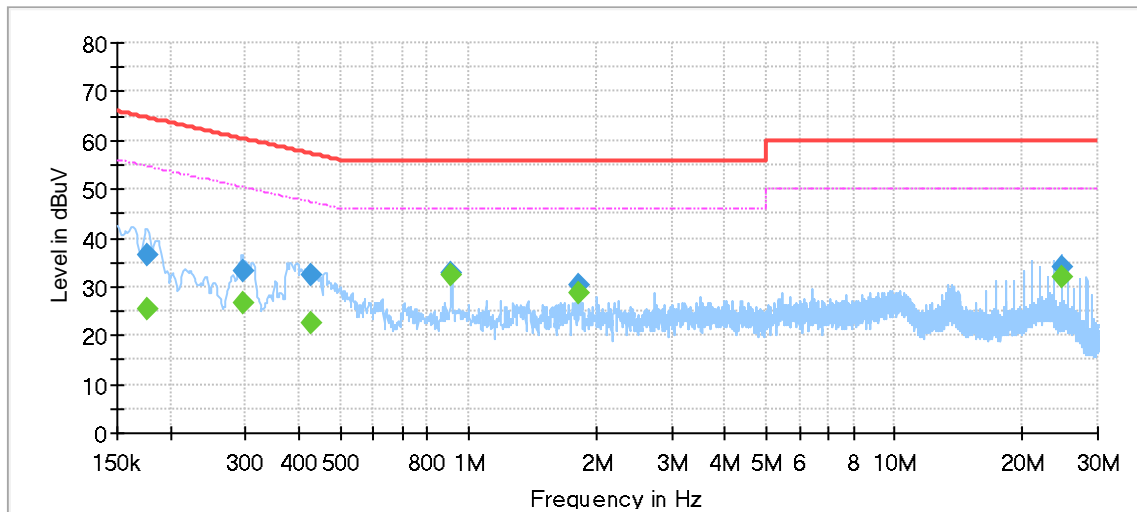
The EUT is put on a table of non-conducting material that is 12 mm high. The vertical conducting wall of shielding is located 40cm to the rear of the EUT. The power line of the EUT is connected to the AC mains through an Artificial Mains Network (A.M.N.). A EMI Measurement Receiver (R&S Test Receiver ESR3) is used to test the emissions from both sides of AC line. According to the requirements in Section 6.2 of ANSI C63.10-2013. Conducted emissions from the EUT measured in the frequency range between 0.15 MHz and 30MHz using CISPR Quasi-Peak and average detector mode. The bandwidth of EMI test receiver is set at 9kHz.

The arrangement of the equipment is installed to meet the standards and operating in a manner, which tends to maximize its emission characteristics in a normal application.

**TEST ENVIRONMENT**

Temperature	22°C	Relative Humidity	56%
Atmosphere Pressure	101kPa	Test Voltage	AC 120V

**LINE L RESULTS (WORST-CASE CONFIGURATION)**

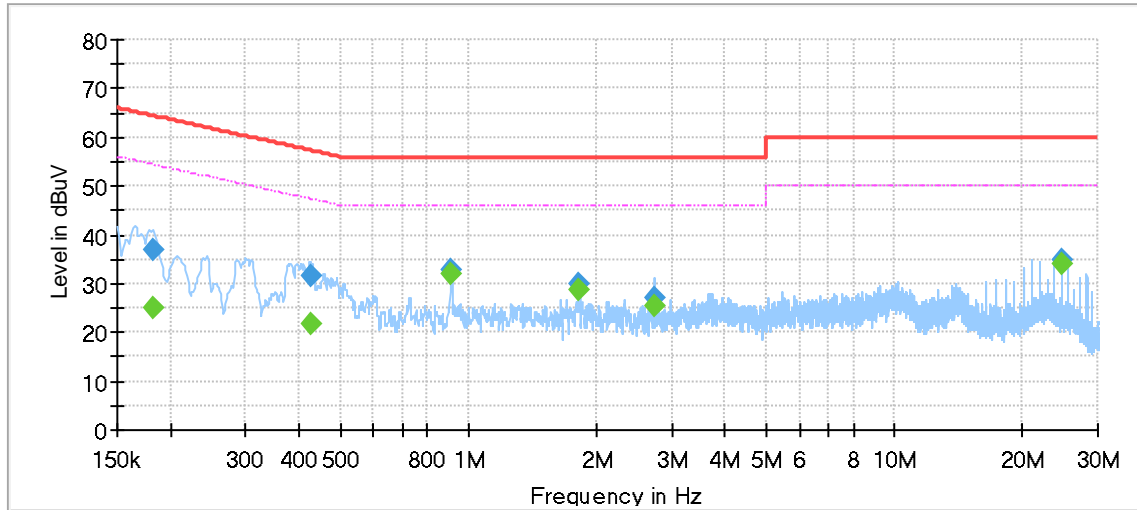


**Final Result**

Frequency [MHz]	QuasiPeak [dBµV]	Average [dBµV]	Limit [dBµV]	Margin [dB]	Meas. Time [ms]	Bandwidth [kHz]	Line	Filter	Corr. [dB]
0.176865	---	25.25	54.63	29.38	1000.0	9.000	L1	OFF	9.6
0.176865	36.50	---	64.63	28.13	1000.0	9.000	L1	OFF	9.6
0.294773	---	26.86	50.39	23.53	1000.0	9.000	L1	OFF	9.6
0.294773	33.24	---	60.39	27.14	1000.0	9.000	L1	OFF	9.6
0.429098	---	22.51	47.27	24.77	1000.0	9.000	L1	OFF	9.5
0.429098	32.29	---	57.27	24.99	1000.0	9.000	L1	OFF	9.5
0.911175	---	32.21	46.00	13.79	1000.0	9.000	L1	OFF	9.5
0.911175	32.88	---	56.00	23.12	1000.0	9.000	L1	OFF	9.5
1.823093	---	28.76	46.00	17.24	1000.0	9.000	L1	OFF	9.5
1.823093	30.16	---	56.00	25.84	1000.0	9.000	L1	OFF	9.5
24.619538	---	31.96	50.00	18.04	1000.0	9.000	L1	OFF	9.4
24.619538	34.20	---	60.00	25.80	1000.0	9.000	L1	OFF	9.4

- Note: 1. If QP Result complies with AV limit, AV Result is deemed to comply with AV limit.  
 2. Test setup: RBW: 200 Hz (9 kHz—150 kHz), 9 kHz (150 kHz—30 MHz).  
 3. Step size: 80Hz (0.009MHz-0.15MHz), 4 kHz (0.15MHz-30MHz), Scan time: auto.  
 4. The extension cord/outlet strip was calibrated with the LISN as required by ANSI C63.10:2013 Clause 6.2.2.  
 5. Pre-testing all test modes and channels, and find the MCH of 11B which is the worst case, so only the worst case is included in this test report.  
 6. Two models of docker will be collocated to the EUT, both of them have bee test, only the worse is recorded in this test report.

**LINE N RESULTS (WORST-CASE CONFIGURATION)**



**Final Result**

Frequency [MHz]	QuasiPeak [dBμV]	Average [dBμV]	Limit [dBμV]	Margin [dB]	Meas. Time [ms]	Bandwidth [kHz]	Line	Filter	Corr. [dB]
0.181343	---	25.17	54.42	29.26	1000.0	9.000	N	OFF	9.6
0.181343	37.09	---	64.42	27.33	1000.0	9.000	N	OFF	9.6
0.426113	---	21.72	47.33	25.60	1000.0	9.000	N	OFF	9.5
0.426113	31.43	---	57.33	25.90	1000.0	9.000	N	OFF	9.5
0.911175	---	32.14	46.00	13.86	1000.0	9.000	N	OFF	9.4
0.911175	32.76	---	56.00	23.24	1000.0	9.000	N	OFF	9.4
1.823093	---	28.70	46.00	17.30	1000.0	9.000	N	OFF	9.4
1.823093	29.93	---	56.00	26.07	1000.0	9.000	N	OFF	9.4
2.735010	---	25.34	46.00	20.66	1000.0	9.000	N	OFF	9.4
2.735010	27.09	---	56.00	28.91	1000.0	9.000	N	OFF	9.4
24.621030	---	34.02	50.00	15.98	1000.0	9.000	N	OFF	9.4
24.621030	34.71	---	60.00	25.29	1000.0	9.000	N	OFF	9.4

- Note: 1. If QP Result complies with AV limit, AV Result is deemed to comply with AV limit.  
 2. Test setup: RBW: 200 Hz (9 kHz—150 kHz), 9 kHz (150 kHz—30 MHz).  
 3. Step size: 80Hz (0.009MHz-0.15MHz), 4 kHz (0.15MHz-30MHz), Scan time: auto.  
 4. The extension cord/outlet strip was calibrated with the LISN as required by ANSI C63.10:2013 Clause 6.2.2.  
 5. Pre-testing all test modes and channels, and find the MCH of 11B which is the worst case, so only the worst case is included in this test report.  
 6. Two models of docker will be collocated to the EUT, both of them have bee test, only the worse is recorded in this test report.



## 10. ANTENNA REQUIREMENTS

### APPLICABLE REQUIREMENTS

Please refer to FCC §15.203

An intentional radiator shall be designed to ensure that no antenna other than that furnished by the responsible party shall be used with the device. The use of a permanently attached antenna or of an antenna that uses a unique coupling to the intentional radiator shall be considered sufficient to comply with the provisions of this section. The manufacturer may design the unit so that a broken antenna can be replaced by the user, but the use of a standard antenna jack or electrical connector is prohibited.

Please refer to FCC §15.247(b)(4)

The conducted output power limit specified in paragraph (b) of this section is based on the use of antennas with directional gains that do not exceed 6 dBi. Except as shown in paragraph (c) of this section, if transmitting antennas of directional gain greater than 6 dBi are used, the conducted output power from the intentional radiator shall be reduced below the stated values in paragraphs (b)(1), (b)(2), and (b)(3) of this section, as appropriate, by the amount in dB that the directional gain of the antenna exceeds 6 dBi.

### ANTENNA GAIN

The antenna gain of EUT is less than 6 dBi

**END OF REPORT**