

8.2. TEST ENVIRONMENT

Temperature	22°C	Relative Humidity	56%
Atmosphere Pressure	101kPa	Test Voltage	AC 120V

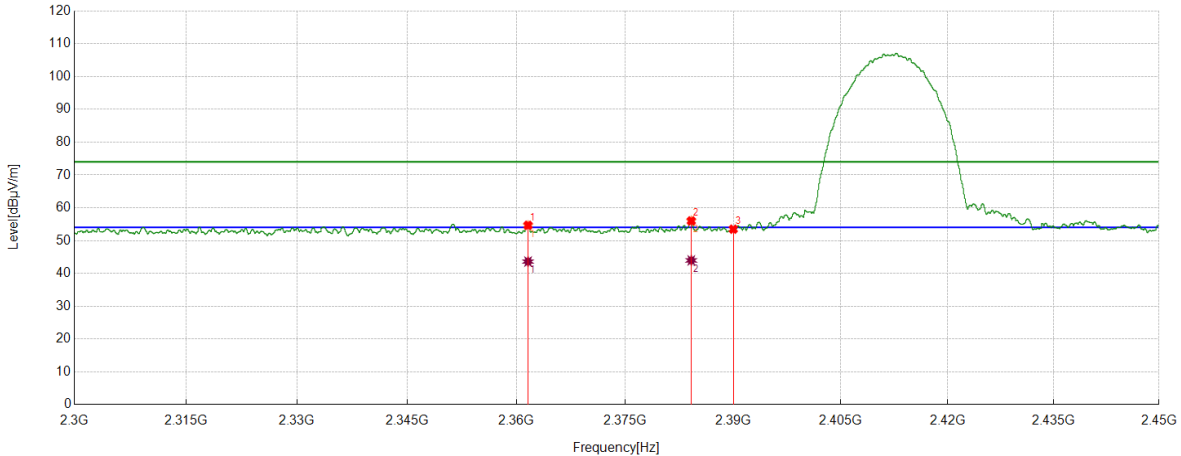
8.3. RESTRICTED BANDEDGE

TEST RESULT TABLE

Test Mode	Channel	P _{uw} (dBm)	Verdict
11B	LCH	<Limit	PASS
	MCH	<Limit	PASS
	HCH	<Limit	PASS
11G	LCH	<Limit	PASS
	MCH	<Limit	PASS
	HCH	<Limit	PASS
11N HT20	LCH	<Limit	PASS
	MCH	<Limit	PASS
	HCH	<Limit	PASS
11N HT40	LCH	<Limit	PASS
	MCH	<Limit	PASS
	HCH	<Limit	PASS

TEST GRAPHS

Test Mode	Channel	Polarization	Verdict
11B	LCH	Horizontal	PASS



PK Result:

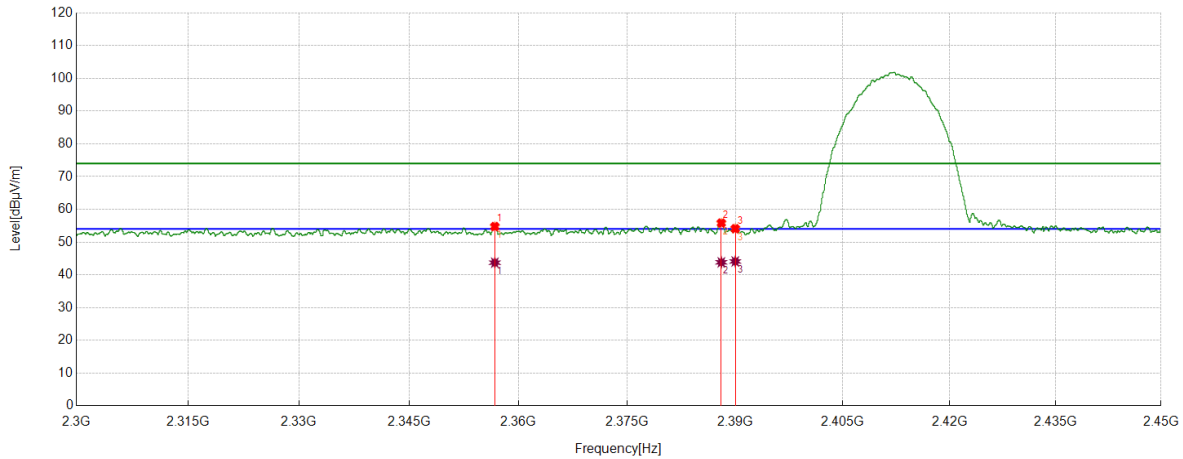
No.	Frequency	Reading Level	Correct Factor	Result	Limit	Margin	Remark
	[MHz]	[dBuV]	[dB/m]	[dBuV/m]	[dBuV/m]	[dB]	
1	2361.6014	41.17	13.48	54.65	74.00	-19.35	Horizontal
2	2384.1605	42.44	13.55	55.99	74.00	-18.01	Horizontal
3	2390.0000	39.99	13.48	53.47	74.00	-20.53	Horizontal

AV Result:

No.	Frequency	Reading Level	Correct Factor	Result	Limit	Margin	Remark
	[MHz]	[dBuV]	[dB/m]	[dBuV/m]	[dBuV/m]	[dB]	
1	2361.6014	30.11	13.48	43.59	54.00	-10.41	Horizontal
2	2384.1605	30.40	13.55	43.95	54.00	-10.05	Horizontal

- Note: 1. Peak detector: RBW: 1 MHz, VBW: 3 MHz.
 2. Average detector: RBW: 1 MHz, VBW: 1/T MHz(refer to clause 7.1.).
 3. Measurement = Reading Level + Correct Factor,
 Correct Factor = Antenna Factor + Loss (Cable + Attenuator) – Amplifier Gain.
 4. Only the worst case emission was recorded, if it complies with the limit, the other emissions deemed to comply with the limit.

Test Mode	Channel	Polarization	Verdict
11B	LCH	Vertical	PASS



PK Result:

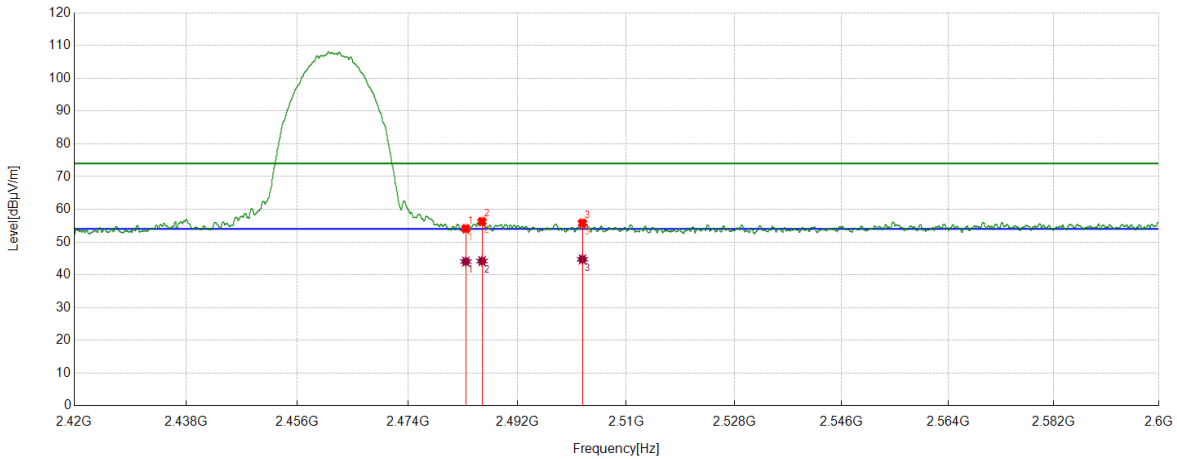
No.	Frequency	Reading Level	Correct Factor	Result	Limit	Margin	Remark
	[MHz]	[dBuV]	[dB/m]	[dBuV/m]	[dBuV/m]	[dB]	
1	2356.7633	41.26	13.49	54.75	74.00	-19.25	Vertical
2	2388.061	42.31	13.50	55.81	74.00	-18.19	Vertical
3	2390.0000	40.61	13.48	54.09	74.00	-19.91	Vertical

AV Result:

No.	Frequency	Reading Level	Correct Factor	Result	Limit	Margin	Remark
	[MHz]	[dBuV]	[dB/m]	[dBuV/m]	[dBuV/m]	[dB]	
1	2356.7633	30.21	13.49	43.70	54.00	-10.30	Vertical
2	2388.061	30.31	13.50	43.81	54.00	-10.19	Vertical
3	2390.0000	30.60	13.48	44.08	54.00	-9.92	Vertical

- Note: 1. Peak detector: RBW: 1 MHz, VBW: 3 MHz.
 2. Average detector: RBW: 1 MHz, VBW: 1/T MHz(refer to clause 7.1.).
 3. Measurement = Reading Level + Correct Factor,
 Correct Factor = Antenna Factor + Loss (Cable + Attenuator) – Amplifier Gain.
 4. Only the worst case emission was recorded, if it complies with the limit, the other emissions deemed to comply with the limit.

Test Mode	Channel	Polarization	Verdict
11B	HCH	Horizontal	PASS



PK Result:

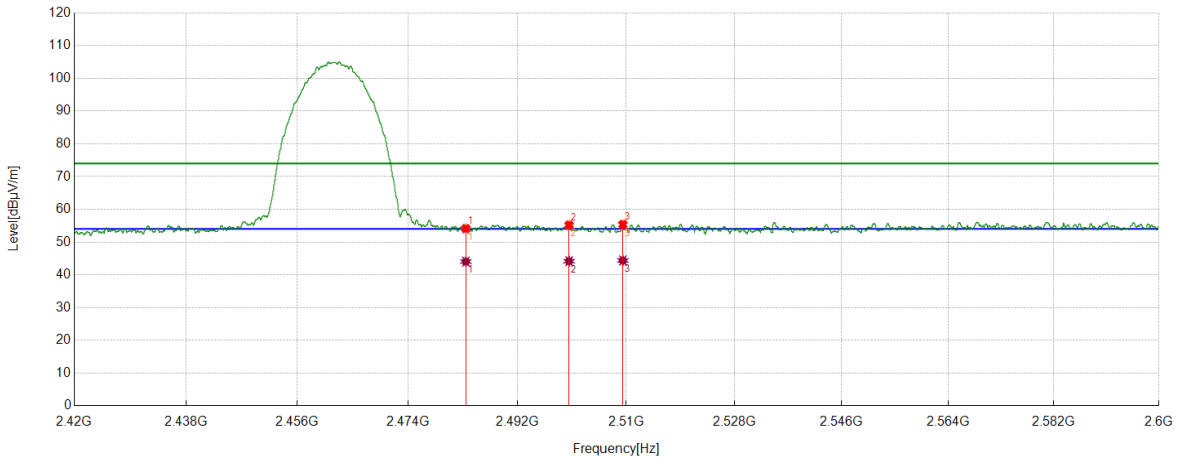
No.	Frequency	Reading Level	Correct Factor	Result	Limit	Margin	Remark
	[MHz]	[dBuV]	[dB/m]	[dBuV/m]	[dBuV/m]	[dB]	
1	2483.5000	39.83	14.25	54.08	74.00	-19.92	Horizontal
2	2486.1583	41.96	14.30	56.26	74.00	-17.74	Horizontal
3	2502.7203	41.44	14.34	55.78	74.00	-18.22	Horizontal

AV Result:

No.	Frequency	Reading Level	Correct Factor	Result	Limit	Margin	Remark
	[MHz]	[dBuV]	[dB/m]	[dBuV/m]	[dBuV/m]	[dB]	
1	2483.5000	29.79	14.25	44.04	54.00	-9.96	Horizontal
2	2486.1583	29.88	14.30	44.18	54.00	-9.82	Horizontal
3	2502.7203	30.39	14.34	44.73	54.00	-9.27	Horizontal

- Note: 1. Peak detector: RBW: 1 MHz, VBW: 3 MHz.
 2. Average detector: RBW: 1 MHz, VBW: 1/T MHz(refer to clause 7.1.).
 3. Measurement = Reading Level + Correct Factor,
 Correct Factor = Antenna Factor + Loss (Cable + Attenuator) – Amplifier Gain.
 4. Only the worst case emission was recorded, if it complies with the limit, the other emissions deemed to comply with the limit.

Test Mode	Channel	Polarization	Verdict
11B	HCH	Vertical	PASS



PK Result:

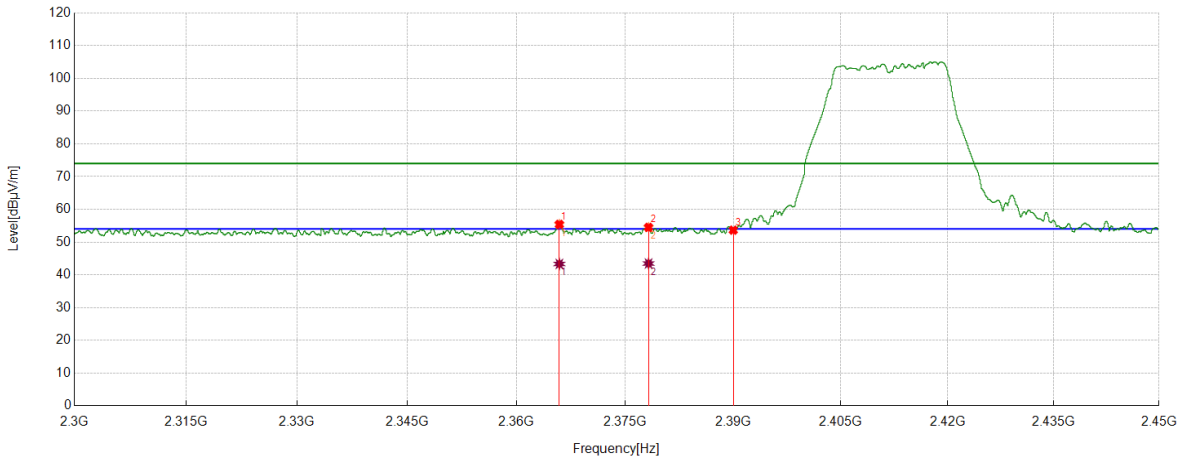
No.	Frequency	Reading Level	Correct Factor	Result	Limit	Margin	Remark
	[MHz]	[dBuV]	[dB/m]	[dBuV/m]	[dBuV/m]	[dB]	
1	2483.5000	39.86	14.25	54.11	74.00	-19.89	Vertical
2	2500.5151	40.89	14.29	55.18	74.00	-18.82	Vertical
3	2509.4262	40.91	14.46	55.37	74.00	-18.63	Vertical

AV Result:

No.	Frequency	Reading Level	Correct Factor	Result	Limit	Margin	Remark
	[MHz]	[dBuV]	[dB/m]	[dBuV/m]	[dBuV/m]	[dB]	
1	2483.5000	29.78	14.25	44.03	54.00	-9.97	Vertical
2	2500.5151	29.86	14.29	44.15	54.00	-9.85	Vertical
3	2509.4262	29.90	14.46	44.36	54.00	-9.64	Vertical

- Note: 1. Peak detector: RBW: 1 MHz, VBW: 3 MHz.
 2. Average detector: RBW: 1 MHz, VBW: 1/T MHz(refer to clause 7.1.).
 3. Measurement = Reading Level + Correct Factor,
 Correct Factor = Antenna Factor + Loss (Cable + Attenuator) – Amplifier Gain.
 4. Only the worst case emission was recorded, if it complies with the limit, the other emissions deemed to comply with the limit.

Test Mode	Channel	Polarization	Verdict
11G	LCH	Horizontal	PASS



PK Result:

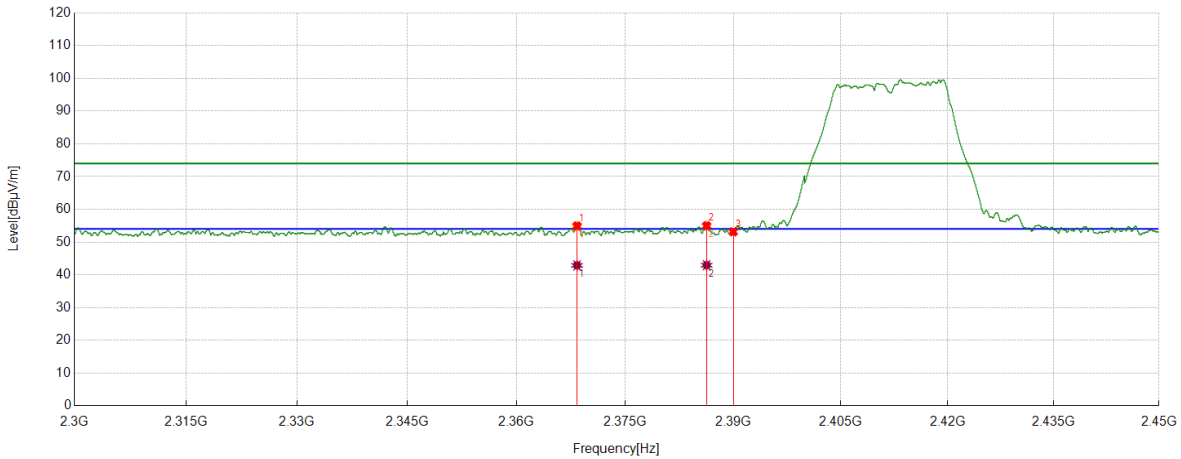
No.	Frequency	Reading Level	Correct Factor	Result	Limit	Margin	Remark
	[MHz]	[dBuV]	[dB/m]	[dBuV/m]	[dBuV/m]	[dB]	
1	2365.9145	41.88	13.52	55.40	74.00	-18.60	Horizontal
2	2378.2348	40.90	13.59	54.49	74.00	-19.51	Horizontal
3	2390.0000	40.15	13.48	53.63	74.00	-20.37	Horizontal

AV Result:

No.	Frequency	Reading Level	Correct Factor	Result	Limit	Margin	Remark
	[MHz]	[dBuV]	[dB/m]	[dBuV/m]	[dBuV/m]	[dB]	
1	2365.9145	29.79	13.52	43.31	54.00	-10.69	Horizontal
2	2378.2348	29.85	13.59	43.44	54.00	-10.56	Horizontal

- Note: 1. Peak detector: RBW: 1 MHz, VBW: 3 MHz.
 2. Average detector: RBW: 1 MHz, VBW: 1/T MHz(refer to clause 7.1.).
 3. Measurement = Reading Level + Correct Factor,
 Correct Factor = Antenna Factor + Loss (Cable + Attenuator) – Amplifier Gain.
 4. Only the worst case emission was recorded, if it complies with the limit, the other emissions deemed to comply with the limit.

Test Mode	Channel	Polarization	Verdict
11G	LCH	Vertical	PASS



PK Result:

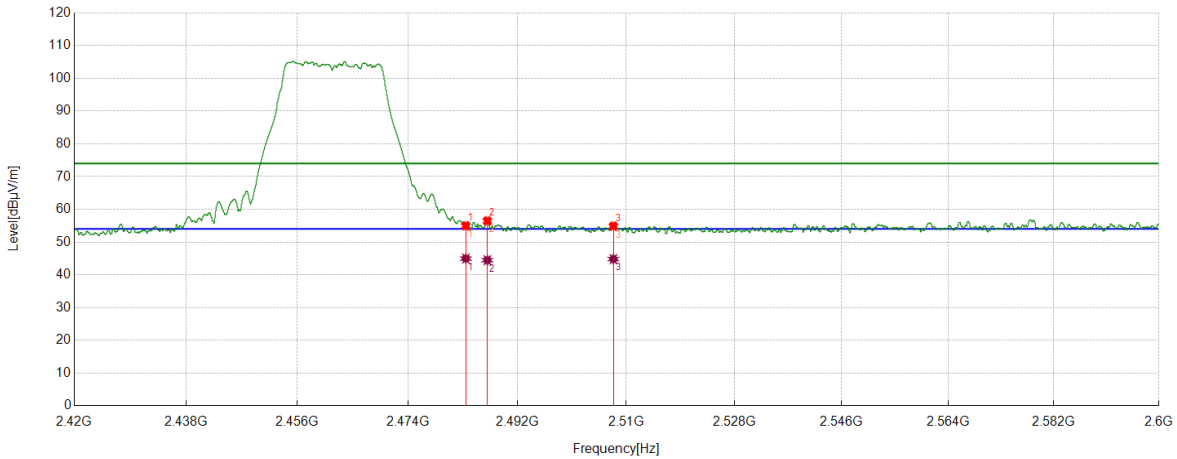
No.	Frequency	Reading Level	Correct Factor	Result	Limit	Margin	Remark
	[MHz]	[dBuV]	[dB/m]	[dBuV/m]	[dBuV/m]	[dB]	
1	2368.3523	41.38	13.53	54.91	74.00	-19.09	Vertical
2	2386.2983	41.44	13.53	54.97	74.00	-19.03	Vertical
3	2390.0000	39.65	13.48	53.13	74.00	-20.87	Vertical

AV Result:

No.	Frequency	Reading Level	Correct Factor	Result	Limit	Margin	Remark
	[MHz]	[dBuV]	[dB/m]	[dBuV/m]	[dBuV/m]	[dB]	
1	2368.3523	29.35	13.53	42.88	54.00	-11.12	Vertical
2	2386.2983	29.41	13.53	42.94	54.00	-11.06	Vertical

- Note: 1. Peak detector: RBW: 1 MHz, VBW: 3 MHz.
 2. Average detector: RBW: 1 MHz, VBW: 1/T MHz(refer to clause 7.1.).
 3. Measurement = Reading Level + Correct Factor,
 Correct Factor = Antenna Factor + Loss (Cable + Attenuator) – Amplifier Gain.
 4. Only the worst case emission was recorded, if it complies with the limit, the other emissions deemed to comply with the limit.

Test Mode	Channel	Polarization	Verdict
11G	HCH	Horizontal	PASS



PK Result:

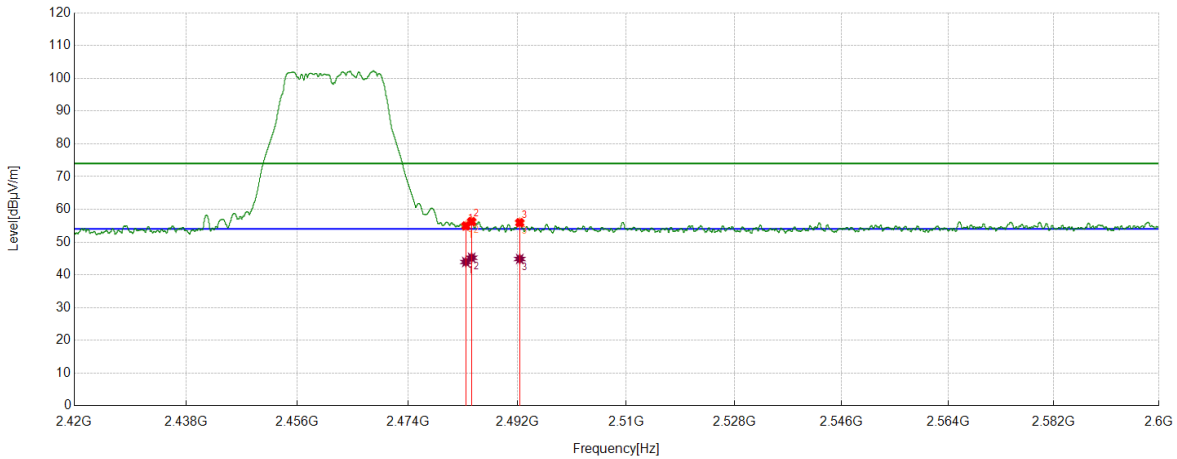
No.	Frequency	Reading Level	Correct Factor	Result	Limit	Margin	Remark
	[MHz]	[dBuV]	[dB/m]	[dBuV/m]	[dBuV/m]	[dB]	
1	2483.5000	40.72	14.25	54.97	74.00	-19.03	Horizontal
2	2487.0359	42.18	14.31	56.49	74.00	-17.51	Horizontal
3	2507.851	40.45	14.43	54.88	74.00	-19.12	Horizontal

AV Result:

No.	Frequency	Reading Level	Correct Factor	Result	Limit	Margin	Remark
	[MHz]	[dBuV]	[dB/m]	[dBuV/m]	[dBuV/m]	[dB]	
1	2483.5000	30.71	14.25	44.96	54.00	-9.04	Horizontal
2	2487.0359	30.15	14.31	44.46	54.00	-9.54	Horizontal
3	2507.851	30.37	14.43	44.80	54.00	-9.20	Horizontal

- Note: 1. Peak detector: RBW: 1 MHz, VBW: 3 MHz.
 2. Average detector: RBW: 1 MHz, VBW: 1/T MHz(refer to clause 7.1.).
 3. Measurement = Reading Level + Correct Factor,
 Correct Factor = Antenna Factor + Loss (Cable + Attenuator) – Amplifier Gain.
 4. Only the worst case emission was recorded, if it complies with the limit, the other emissions deemed to comply with the limit.

Test Mode	Channel	Polarization	Verdict
11G	HCH	Vertical	PASS



PK Result:

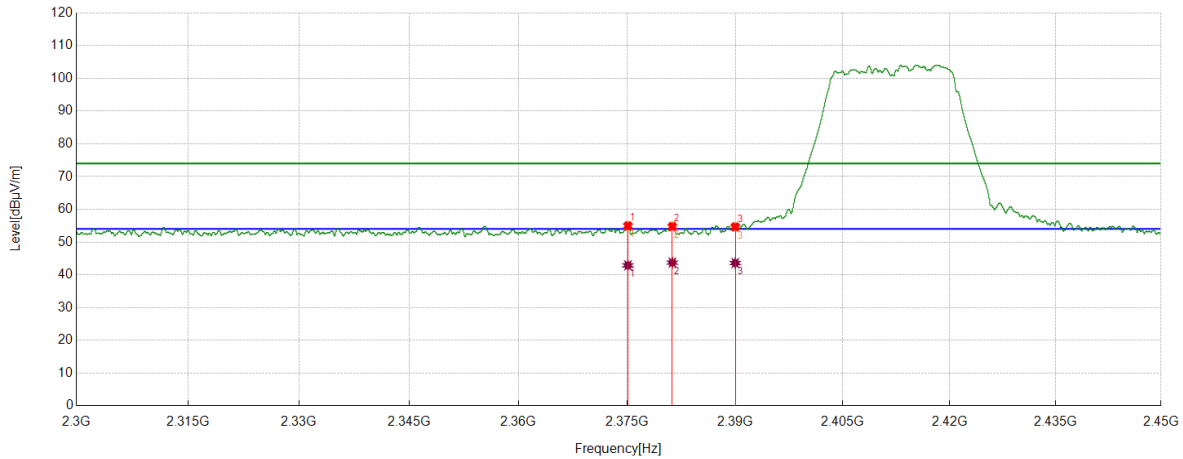
No.	Frequency	Reading Level	Correct Factor	Result	Limit	Margin	Remark
	[MHz]	[dBuV]	[dB/m]	[dBuV/m]	[dBuV/m]	[dB]	
1	2483.5000	40.68	14.25	54.93	74.00	-19.07	Vertical
2	2484.4481	41.98	14.27	56.25	74.00	-17.75	Vertical
3	2492.369	41.58	14.34	55.92	74.00	-18.08	Vertical

AV Result:

No.	Frequency	Reading Level	Correct Factor	Result	Limit	Margin	Remark
	[MHz]	[dBuV]	[dB/m]	[dBuV/m]	[dBuV/m]	[dB]	
1	2483.5000	29.66	14.25	43.91	54.00	-10.09	Vertical
2	2484.4481	30.94	14.27	45.21	54.00	-8.79	Vertical
3	2492.369	30.49	14.34	44.83	54.00	-9.17	Vertical

- Note: 1. Peak detector: RBW: 1 MHz, VBW: 3 MHz.
 2. Average detector: RBW: 1 MHz, VBW: 1/T MHz(refer to clause 7.1.).
 3. Measurement = Reading Level + Correct Factor,
 Correct Factor = Antenna Factor + Loss (Cable + Attenuator) – Amplifier Gain.
 4. Only the worst case emission was recorded, if it complies with the limit, the other emissions deemed to comply with the limit.

Test Mode	Channel	Polarization	Verdict
11N HT20	LCH	Horizontal	PASS



PK Result:

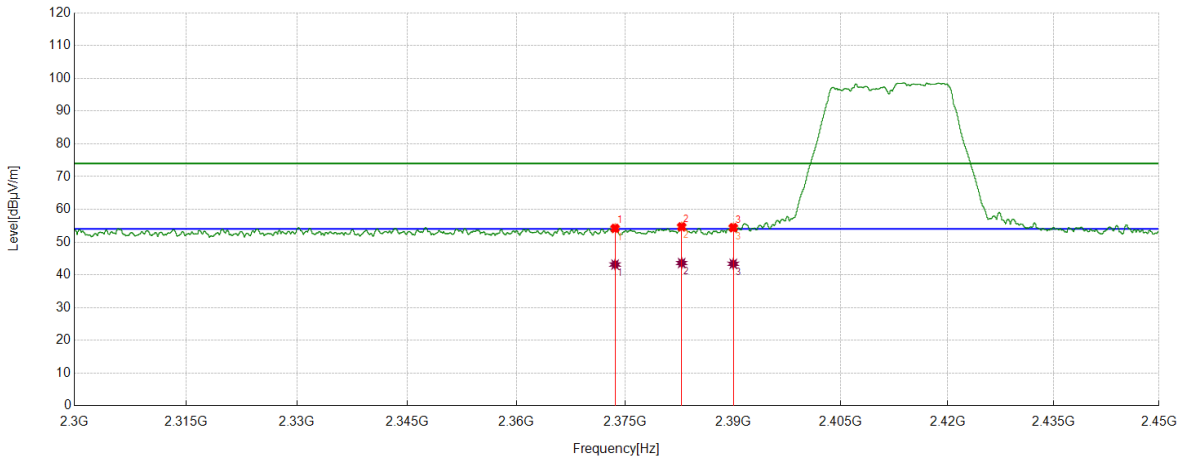
No.	Frequency	Reading Level	Correct Factor	Result	Limit	Margin	Remark
	[MHz]	[dBuV]	[dB/m]	[dBuV/m]	[dBuV/m]	[dB]	
1	2375.1031	41.38	13.58	54.96	74.00	-19.04	Horizontal
2	2381.2539	41.16	13.59	54.75	74.00	-19.25	Horizontal
3	2390.0000	41.16	13.48	54.64	74.00	-19.36	Horizontal

AV Result:

No.	Frequency	Reading Level	Correct Factor	Result	Limit	Margin	Remark
	[MHz]	[dBuV]	[dB/m]	[dBuV/m]	[dBuV/m]	[dB]	
1	2375.1031	29.30	13.58	42.88	54.00	-11.12	Horizontal
2	2381.2539	30.13	13.59	43.72	54.00	-10.28	Horizontal
3	2390.0000	30.12	13.48	43.60	54.00	-10.40	Horizontal

- Note: 1. Peak detector: RBW: 1 MHz, VBW: 3 MHz.
 2. Average detector: RBW: 1 MHz, VBW: 1/T MHz(refer to clause 7.1.).
 3. Measurement = Reading Level + Correct Factor,
 Correct Factor = Antenna Factor + Loss (Cable + Attenuator) – Amplifier Gain.
 4. Only the worst case emission was recorded, if it complies with the limit, the other emissions deemed to comply with the limit.

Test Mode	Channel	Polarization	Verdict
11N HT20	LCH	Vertical	PASS



PK Result:

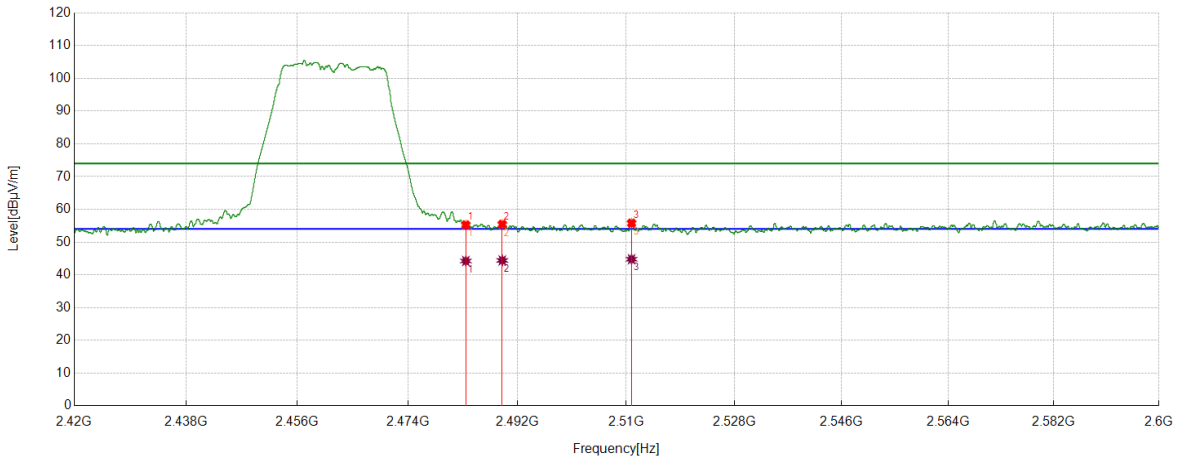
No.	Frequency	Reading Level	Correct Factor	Result	Limit	Margin	Remark
	[MHz]	[dBuV]	[dB/m]	[dBuV/m]	[dBuV/m]	[dB]	
1	2373.603	40.63	13.57	54.20	74.00	-19.80	Vertical
2	2382.8291	41.11	13.56	54.67	74.00	-19.33	Vertical
3	2390.0000	40.93	13.48	54.41	74.00	-19.59	Vertical

AV Result:

No.	Frequency	Reading Level	Correct Factor	Result	Limit	Margin	Remark
	[MHz]	[dBuV]	[dB/m]	[dBuV/m]	[dBuV/m]	[dB]	
1	2373.603	29.56	13.57	43.13	54.00	-10.87	Vertical
2	2382.8291	30.03	13.56	43.59	54.00	-10.41	Vertical
3	2390.0000	29.87	13.48	43.35	54.00	-10.65	Vertical

- Note: 1. Peak detector: RBW: 1 MHz, VBW: 3 MHz.
 2. Average detector: RBW: 1 MHz, VBW: 1/T MHz(refer to clause 7.1.).
 3. Measurement = Reading Level + Correct Factor,
 Correct Factor = Antenna Factor + Loss (Cable + Attenuator) – Amplifier Gain.
 4. Only the worst case emission was recorded, if it complies with the limit, the other emissions deemed to comply with the limit.

Test Mode	Channel	Polarization	Verdict
11N HT20	HCH	Horizontal	PASS



PK Result:

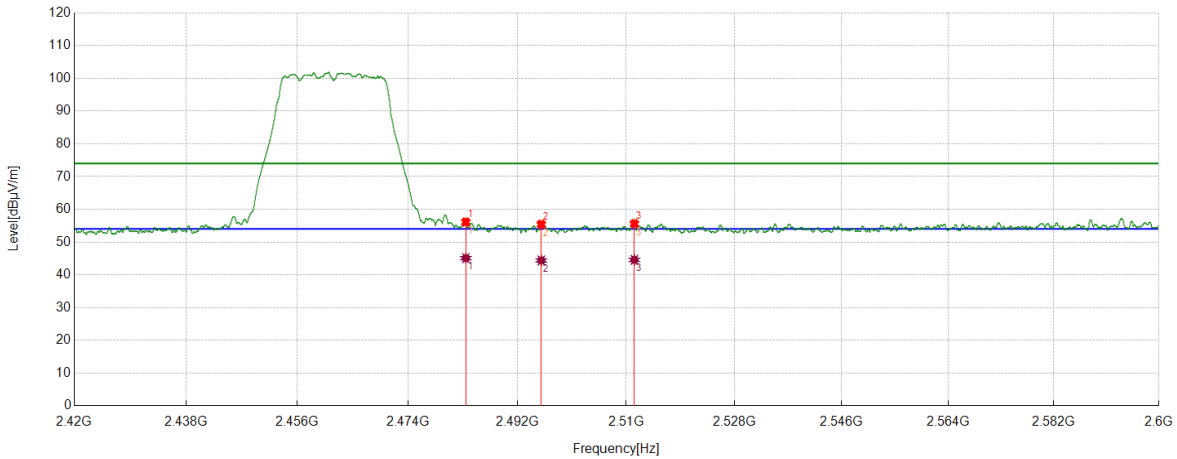
No.	Frequency	Reading Level	Correct Factor	Result	Limit	Margin	Remark
	[MHz]	[dBuV]	[dB/m]	[dBuV/m]	[dBuV/m]	[dB]	
1	2483.5000	40.98	14.25	55.23	74.00	-18.77	Horizontal
2	2489.4887	41.06	14.36	55.42	74.00	-18.58	Horizontal
3	2510.8664	41.31	14.47	55.78	74.00	-18.22	Horizontal

AV Result:

No.	Frequency	Reading Level	Correct Factor	Result	Limit	Margin	Remark
	[MHz]	[dBuV]	[dB/m]	[dBuV/m]	[dBuV/m]	[dB]	
1	2483.5000	29.96	14.25	44.21	54.00	-9.79	Horizontal
2	2489.4887	30.02	14.36	44.38	54.00	-9.62	Horizontal
3	2510.8664	30.29	14.47	44.76	54.00	-9.24	Horizontal

- Note: 1. Peak detector: RBW: 1 MHz, VBW: 3 MHz.
 2. Average detector: RBW: 1 MHz, VBW: 1/T MHz(refer to clause 7.1.).
 3. Measurement = Reading Level + Correct Factor,
 Correct Factor = Antenna Factor + Loss (Cable + Attenuator) – Amplifier Gain.
 4. Only the worst case emission was recorded, if it complies with the limit, the other emissions deemed to comply with the limit.

Test Mode	Channel	Polarization	Verdict
11N HT20	HCH	Vertical	PASS



PK Result:

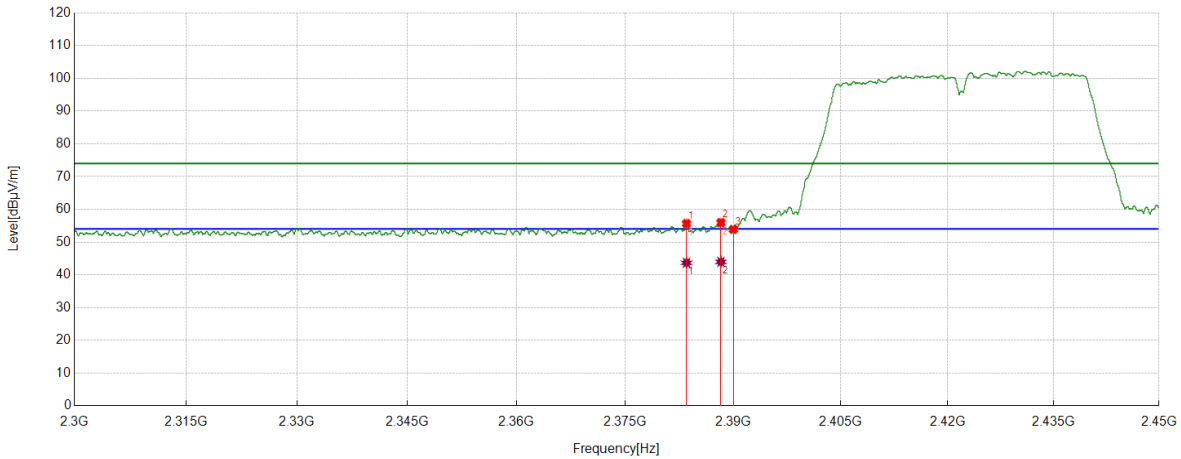
No.	Frequency	Reading Level	Correct Factor	Result	Limit	Margin	Remark
	[MHz]	[dBuV]	[dB/m]	[dBuV/m]	[dBuV/m]	[dB]	
1	2483.5000	41.88	14.25	56.13	74.00	-17.87	Vertical
2	2495.9245	41.11	14.32	55.43	74.00	-18.57	Vertical
3	2511.3389	41.14	14.48	55.62	74.00	-18.38	Vertical

AV Result:

No.	Frequency	Reading Level	Correct Factor	Result	Limit	Margin	Remark
	[MHz]	[dBuV]	[dB/m]	[dBuV/m]	[dBuV/m]	[dB]	
1	2483.5000	30.82	14.25	45.07	54.00	-8.93	Vertical
2	2495.9245	30.06	14.32	44.38	54.00	-9.62	Vertical
3	2511.3389	30.08	14.48	44.56	54.00	-9.44	Vertical

- Note: 1. Peak detector: RBW: 1 MHz, VBW: 3 MHz.
 2. Average detector: RBW: 1 MHz, VBW: 1/T MHz(refer to clause 7.1.).
 3. Measurement = Reading Level + Correct Factor,
 Correct Factor = Antenna Factor + Loss (Cable + Attenuator) – Amplifier Gain.
 4. Only the worst case emission was recorded, if it complies with the limit, the other emissions deemed to comply with the limit.

Test Mode	Channel	Polarization	Verdict
11N HT40	LCH	Horizontal	PASS



PK Result:

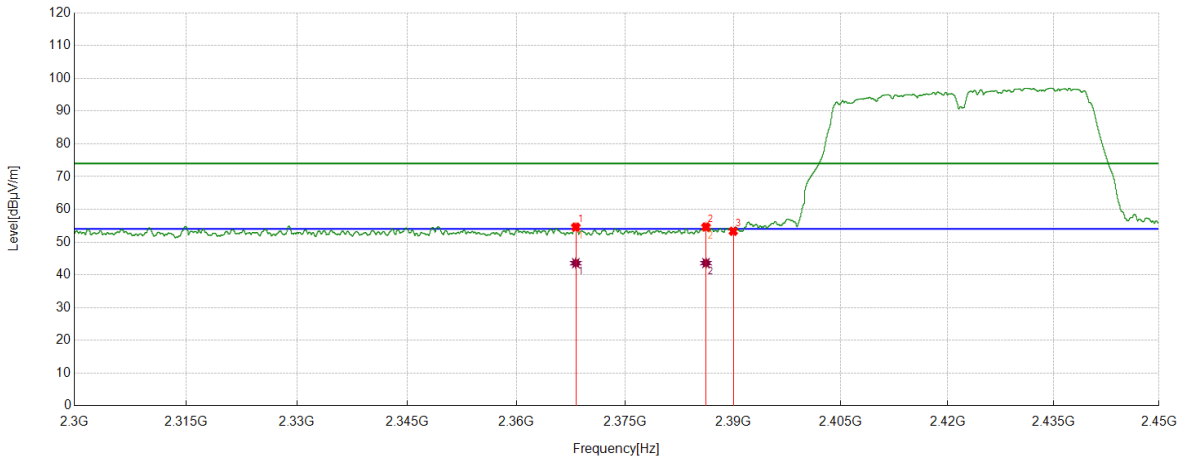
No.	Frequency	Reading Level	Correct Factor	Result	Limit	Margin	Remark
	[MHz]	[dBuV]	[dB/m]	[dBuV/m]	[dBuV/m]	[dB]	
1	2383.5042	42.12	13.55	55.67	74.00	-18.33	Horizontal
2	2388.286	42.47	13.50	55.97	74.00	-18.03	Horizontal
3	2390.0000	40.39	13.48	53.87	74.00	-20.13	Horizontal

AV Result:

No.	Frequency	Reading Level	Correct Factor	Result	Limit	Margin	Remark
	[MHz]	[dBuV]	[dB/m]	[dBuV/m]	[dBuV/m]	[dB]	
1	2383.5042	30.12	13.55	43.67	54.00	-10.33	Horizontal
2	2388.286	30.45	13.50	43.95	54.00	-10.05	Horizontal

- Note: 1. Peak detector: RBW: 1 MHz, VBW: 3 MHz.
 2. Average detector: RBW: 1 MHz, VBW: 1/T MHz(refer to clause 7.1.).
 3. Measurement = Reading Level + Correct Factor,
 Correct Factor = Antenna Factor + Loss (Cable + Attenuator) – Amplifier Gain.
 4. Only the worst case emission was recorded, if it complies with the limit, the other emissions deemed to comply with the limit.

Test Mode	Channel	Polarization	Verdict
11N HT40	LCH	Vertical	PASS



PK Result:

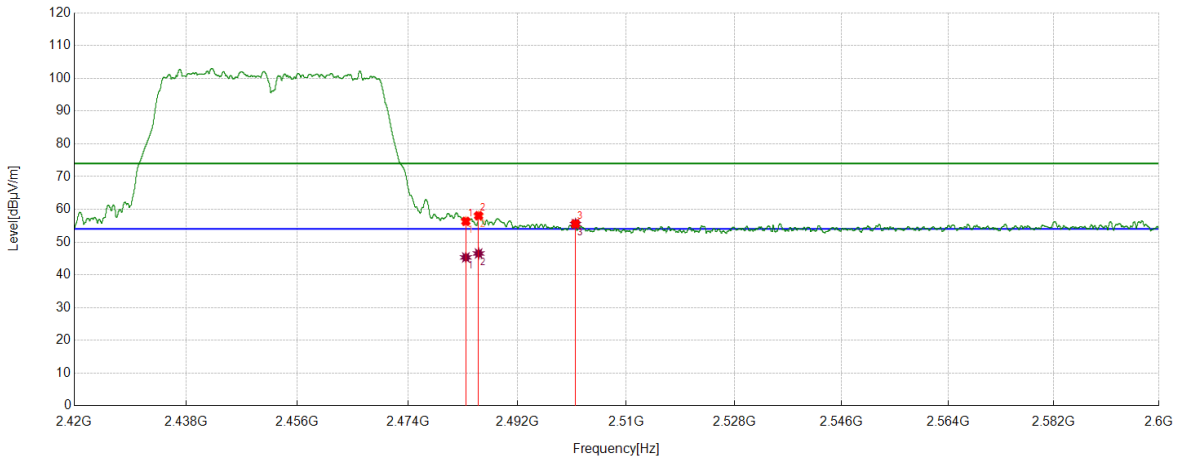
No.	Frequency	Reading Level	Correct Factor	Result	Limit	Margin	Remark
	[MHz]	[dBuV]	[dB/m]	[dBuV/m]	[dBuV/m]	[dB]	
1	2368.1835	41.04	13.53	54.57	74.00	-19.43	Vertical
2	2386.2045	41.08	13.53	54.61	74.00	-19.39	Vertical
3	2390.0000	39.81	13.48	53.29	74.00	-20.71	Vertical

AV Result:

No.	Frequency	Reading Level	Correct Factor	Result	Limit	Margin	Remark
	[MHz]	[dBuV]	[dB/m]	[dBuV/m]	[dBuV/m]	[dB]	
1	2368.1835	30.02	13.53	43.55	54.00	-10.45	Vertical
2	2386.2045	30.05	13.53	43.58	54.00	-10.42	Vertical

- Note: 1. Peak detector: RBW: 1 MHz, VBW: 3 MHz.
 2. Average detector: RBW: 1 MHz, VBW: 1/T MHz(refer to clause 7.1.).
 3. Measurement = Reading Level + Correct Factor,
 Correct Factor = Antenna Factor + Loss (Cable + Attenuator) – Amplifier Gain.
 4. Only the worst case emission was recorded, if it complies with the limit, the other emissions deemed to comply with the limit.

Test Mode	Channel	Polarization	Verdict
11N HT40	HCH	Horizontal	PASS



PK Result:

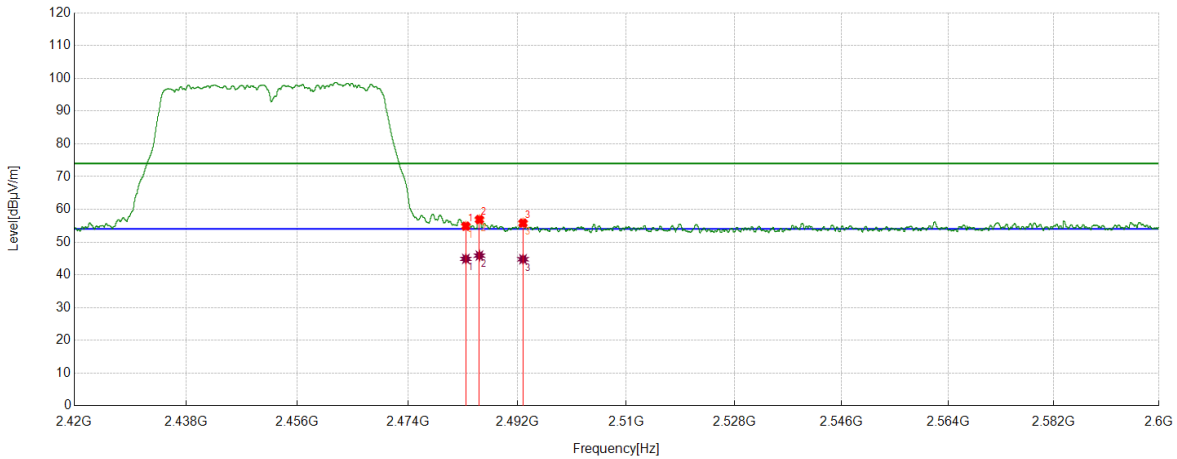
No.	Frequency	Reading Level	Correct Factor	Result	Limit	Margin	Remark
	[MHz]	[dBuV]	[dB/m]	[dBuV/m]	[dBuV/m]	[dB]	
1	2483.5000	42.08	14.25	56.33	74.00	-17.67	Horizontal
2	2485.5957	43.76	14.29	58.05	74.00	-13.45	Horizontal
3	2501.5727	41.27	14.31	55.58	74.00	-18.42	Horizontal

AV Result:

No.	Frequency	Reading Level	Correct Factor	Result	Limit	Margin	Remark
	[MHz]	[dBuV]	[dB/m]	[dBuV/m]	[dBuV/m]	[dB]	
1	2483.5000	31.06	14.25	45.31	54.00	-8.69	Horizontal
2	2485.5957	32.22	14.29	46.51	54.00	-7.49	Horizontal

- Note: 1. Peak detector: RBW: 1 MHz, VBW: 3 MHz.
 2. Average detector: RBW: 1 MHz, VBW: 1/T MHz(refer to clause 7.1.).
 3. Measurement = Reading Level + Correct Factor,
 Correct Factor = Antenna Factor + Loss (Cable + Attenuator) – Amplifier Gain.
 4. Only the worst case emission was recorded, if it complies with the limit, the other emissions deemed to comply with the limit.

Test Mode	Channel	Polarization	Verdict
11N HT40	HCH	Vertical	PASS



PK Result:

No.	Frequency	Reading Level	Correct Factor	Result	Limit	Margin	Remark
	[MHz]	[dBuV]	[dB/m]	[dBuV/m]	[dBuV/m]	[dB]	
1	2483.5000	40.61	14.25	54.86	74.00	-19.14	Vertical
2	2485.7307	42.59	14.29	56.88	74.00	-17.12	Vertical
3	2492.9091	41.44	14.35	55.79	74.00	-18.21	Vertical

AV Result:

No.	Frequency	Reading Level	Correct Factor	Result	Limit	Margin	Remark
	[MHz]	[dBuV]	[dB/m]	[dBuV/m]	[dBuV/m]	[dB]	
1	2483.5000	30.61	14.25	44.86	54.00	-9.14	Vertical
2	2485.7307	31.57	14.29	45.86	54.00	-8.14	Vertical
3	2492.9091	30.40	14.35	44.75	54.00	-9.25	Vertical

- Note: 1. Peak detector: RBW: 1 MHz, VBW: 3 MHz.
 2. Average detector: RBW: 1 MHz, VBW: 1/T MHz(refer to clause 7.1.).
 3. Measurement = Reading Level + Correct Factor,
 Correct Factor = Antenna Factor + Loss (Cable + Attenuator) – Amplifier Gain.
 4. Only the worst case emission was recorded, if it complies with the limit, the other emissions deemed to comply with the limit.

8.4. SPURIOUS EMISSIONS

TEST RESULTS TABLE

1) For 1GHz~18GHz

Test Mode	Channel	Puw(dBm)	Verdict
11B	LCH	<Limit	PASS
	MCH	<Limit	PASS
	HCH	<Limit	PASS
11G	LCH	<Limit	PASS
	MCH	<Limit	PASS
	HCH	<Limit	PASS
11N HT20	LCH	<Limit	PASS
	MCH	<Limit	PASS
	HCH	<Limit	PASS
11N HT40	LCH	<Limit	PASS
	MCH	<Limit	PASS
	HCH	<Limit	PASS

2) For 9kHz~30MHz

Test Mode	Channel	Puw(dBm)	Verdict
11B	MCH	<Limit	PASS

Remark:

1) Through pre-testing all the test modes and test channels, but only the data of the worst case is included in this test report.

3) For 30MHz~1GHz

Test Mode	Channel	Puw(dBm)	Verdict
11B	MCH	<Limit	PASS

Remark:

1) Through pre-testing all the test modes and test channels, but only the data of the worst case is included in this test report.

4) For 18GHz~26.5GHz

Test Mode	Channel	Puw(dBm)	Verdict
11B	MCH	<Limit	PASS

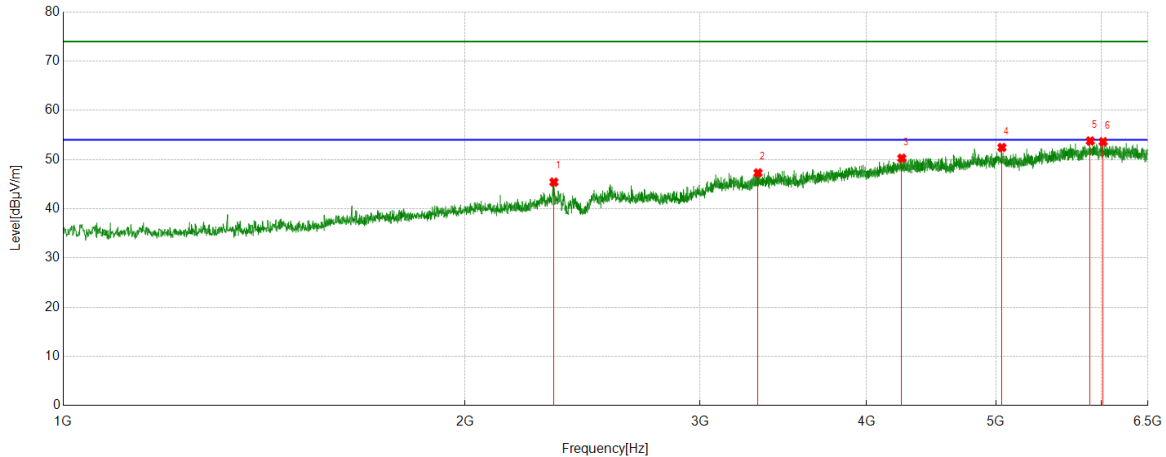
Remark:

1) Through pre-testing all the test modes and test channels, but only the data of the worst case is included in this test report.

Part 1: 1GHz~6.5GHz

HARMONICS AND SPURIOUS EMISSIONS

Test Mode	Channel	Polarization	Verdict
11B	LCH	Horizontal	PASS

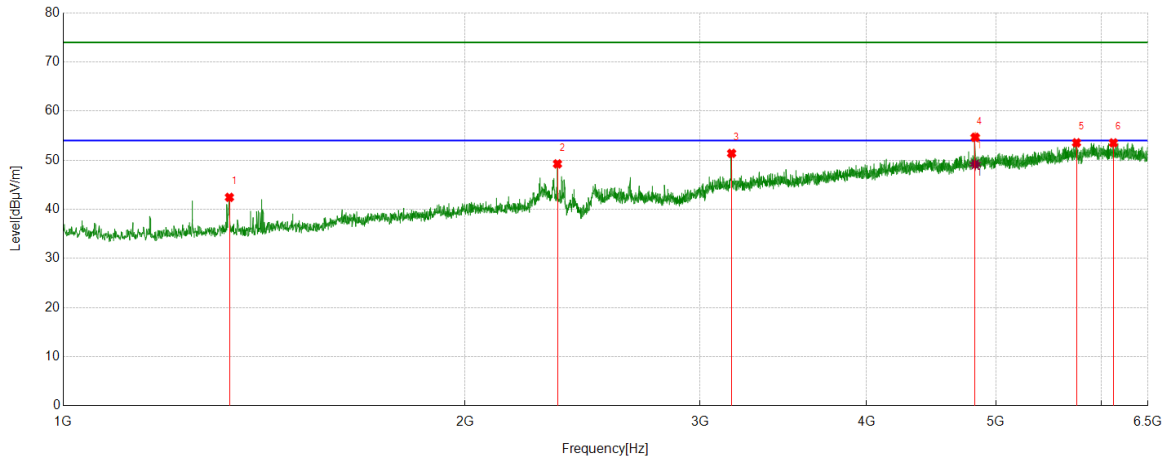


PK Result:

No.	Frequency	Reading Level	Correct Factor	Result	Limit	Margin	Remark
	[MHz]	[dBuV]	[dB/m]	[dBuV/m]	[dBuV/m]	[dB]	
1	2331.8540	40.39	5.03	45.42	74.00	-28.58	Horizontal
2	3316.4771	37.09	10.20	47.29	74.00	-26.71	Horizontal
3	4250.2188	36.31	13.96	50.27	74.00	-23.73	Horizontal
4	5051.9440	36.41	16.05	52.46	74.00	-21.54	Horizontal
5	5883.9230	36.00	17.78	53.78	74.00	-20.22	Horizontal
6	6015.9395	35.60	18.03	53.63	74.00	-20.37	Horizontal

- Note: 1. Measurement = Reading Level + Correct Factor,
Correct Factor = Antenna Factor + Loss (Cable + Filter) – Amplifier Gain.
2. If Peak Result complies with AV limit, AV Result is deemed to comply with AV limit.
3. Test setup: RBW: 1 MHz, VBW: 3 MHz, Sweep time: auto.
4. Peak: Peak detector.
5. For below 3GHz part, filter losses were only considered in the spurious frequency bands and the authorized band was not corrected for Band Reject Filter losses.
6. Only the worst case emission was recorded, if it complies with the limit, the other emissions deemed to comply with the limit.

Test Mode	Channel	Polarization	Verdict
11B	LCH	Vertical	PASS



PK Result:

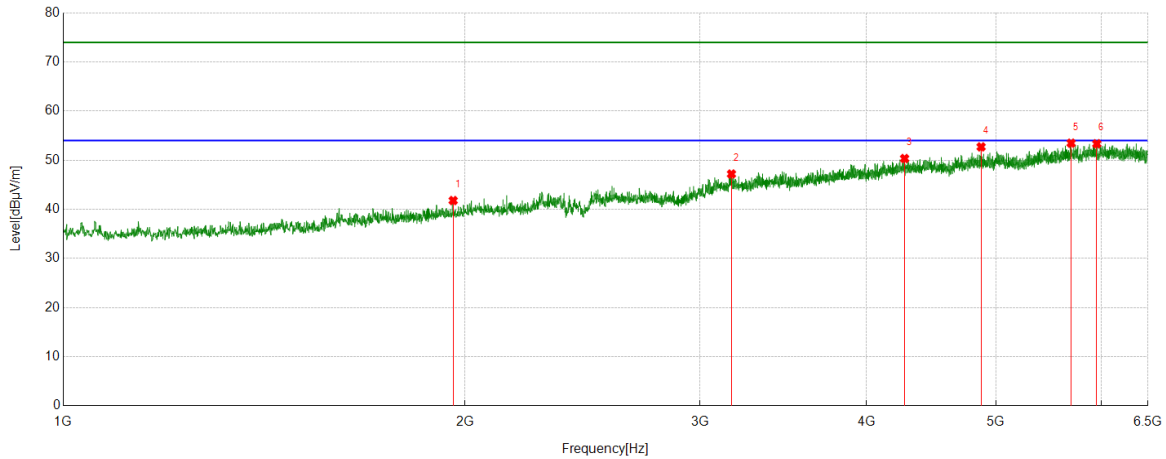
No.	Frequency	Reading Level	Correct Factor	Result	Limit	Margin	Remark
	[MHz]	[dBuV]	[dB/m]	[dBuV/m]	[dBuV/m]	[dB]	
1	1332.1040	43.55	-1.11	42.44	74.00	-31.56	Vertical
2	2346.2933	44.41	4.85	49.26	74.00	-24.74	Vertical
3	3168.6461	42.04	9.36	51.40	74.00	-22.60	Vertical
4	4824.3530	39.01	15.67	54.68	74.00	-19.32	Vertical
5	5745.7182	35.82	17.74	53.56	74.00	-20.44	Vertical
6	6123.2029	35.28	18.26	53.54	74.00	-20.46	Vertical

AV Result:

No.	Frequency	Reading Level	Correct Factor	Result	Limit	Margin	Remark
	[MHz]	[dBuV]	[dB/m]	[dBuV/m]	[dBuV/m]	[dB]	
1	4824.3530	33.49	15.67	49.16	54.00	-4.84	Vertical

- Note: 1. Measurement = Reading Level + Correct Factor,
Correct Factor = Antenna Factor + Loss (Cable + Filter) – Amplifier Gain.
2. If Peak Result complies with AV limit, AV Result is deemed to comply with AV limit.
3. Test setup: RBW: 1 MHz, VBW: 3 MHz, Sweep time: auto.
4. Peak: Peak detector.
5. For below 3GHz part, filter losses were only considered in the spurious frequency bands and the authorized band was not corrected for Band Reject Filter losses.
6. Only the worst case emission was recorded, if it complies with the limit, the other emissions deemed to comply with the limit.

Test Mode	Channel	Polarization	Verdict
11B	MCH	Horizontal	PASS

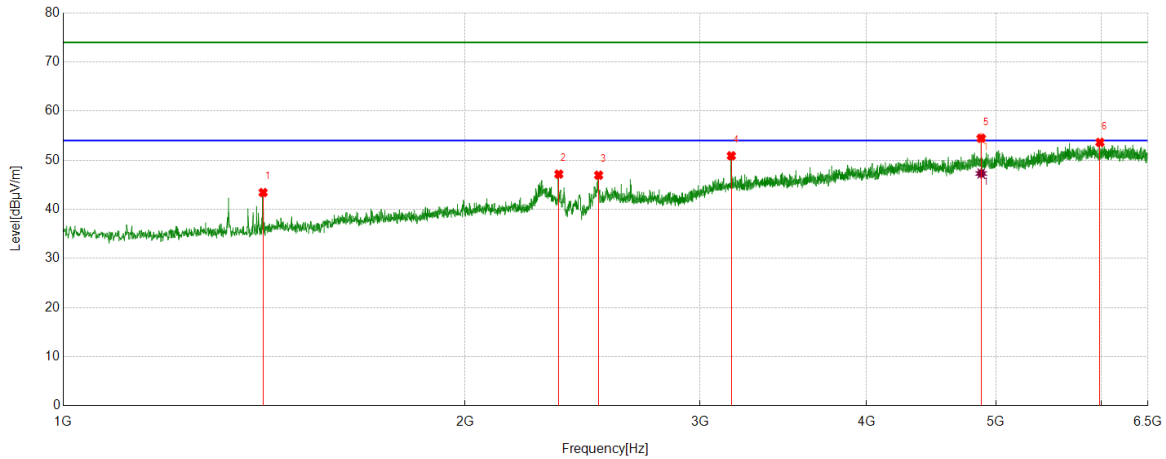


PK Result:

No.	Frequency	Reading Level	Correct Factor	Result	Limit	Margin	Remark
	[MHz]	[dBuV]	[dB/m]	[dBuV/m]	[dBuV/m]	[dB]	
1	1959.8700	38.82	2.97	41.79	74.00	-32.21	Horizontal
2	3167.9585	37.84	9.36	47.20	74.00	-26.80	Horizontal
3	4270.8464	36.42	13.93	50.35	74.00	-23.65	Horizontal
4	4873.8592	37.64	15.08	52.72	74.00	-21.28	Horizontal
5	5692.7741	36.08	17.40	53.48	74.00	-20.52	Horizontal
6	5950.6188	34.88	18.47	53.35	74.00	-20.65	Horizontal

- Note: 1. Measurement = Reading Level + Correct Factor,
Correct Factor = Antenna Factor + Loss (Cable + Filter) – Amplifier Gain.
2. If Peak Result complies with AV limit, AV Result is deemed to comply with AV limit.
3. Test setup: RBW: 1 MHz, VBW: 3 MHz, Sweep time: auto.
4. Peak: Peak detector.
5. For below 3GHz part, filter losses were only considered in the spurious frequency bands and the authorized band was not corrected for Band Reject Filter losses.
6. Only the worst case emission was recorded, if it complies with the limit, the other emissions deemed to comply with the limit.

Test Mode	Channel	Polarization	Verdict
11B	MCH	Vertical	PASS



PK Result:

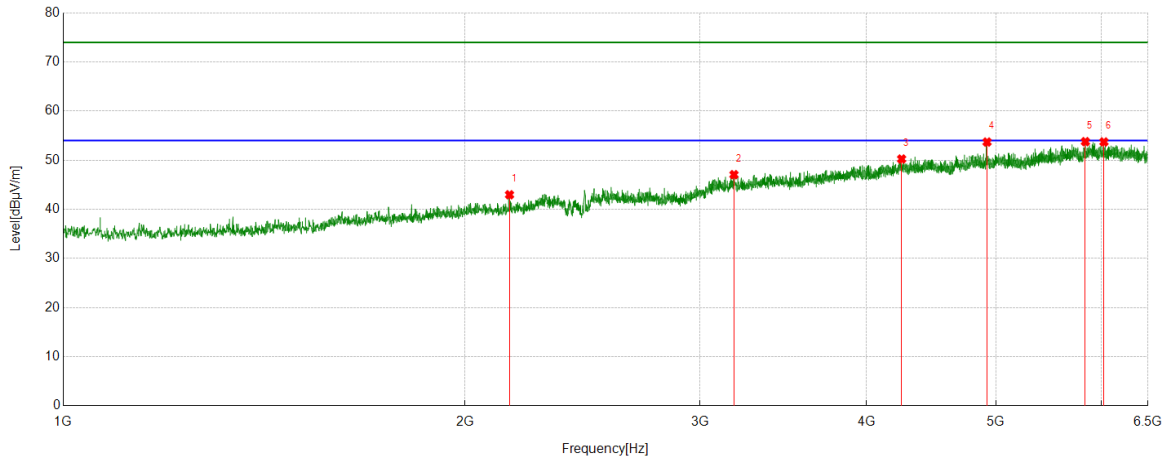
No.	Frequency	Reading Level	Correct Factor	Result	Limit	Margin	Remark
	[MHz]	[dBuV]	[dB/m]	[dBuV/m]	[dBuV/m]	[dB]	
1	1411.8640	44.70	-1.28	43.42	74.00	-30.58	Vertical
2	2351.7940	42.39	4.78	47.17	74.00	-26.83	Vertical
3	2518.8774	41.22	5.73	46.95	74.00	-27.05	Vertical
4	3167.2709	41.55	9.36	50.91	74.00	-23.09	Vertical
5	4874.5468	39.38	15.10	54.48	74.00	-19.52	Vertical
6	5982.9354	35.20	18.44	53.64	74.00	-20.36	Vertical

AV Result:

No.	Frequency	Reading Level	Correct Factor	Result	Limit	Margin	Remark
	[MHz]	[dBuV]	[dB/m]	[dBuV/m]	[dBuV/m]	[dB]	
1	4874.5468	32.20	15.10	47.30	54.00	-6.70	Vertical

- Note: 1. Measurement = Reading Level + Correct Factor,
Correct Factor = Antenna Factor + Loss (Cable + Filter) – Amplifier Gain.
2. If Peak Result complies with AV limit, AV Result is deemed to comply with AV limit.
3. Test setup: RBW: 1 MHz, VBW: 3 MHz, Sweep time: auto.
4. Peak: Peak detector.
5. For below 3GHz part, filter losses were only considered in the spurious frequency bands and the authorized band was not corrected for Band Reject Filter losses.
6. Only the worst case emission was recorded, if it complies with the limit, the other emissions deemed to comply with the limit.

Test Mode	Channel	Polarization	Verdict
11B	HCH	Horizontal	PASS

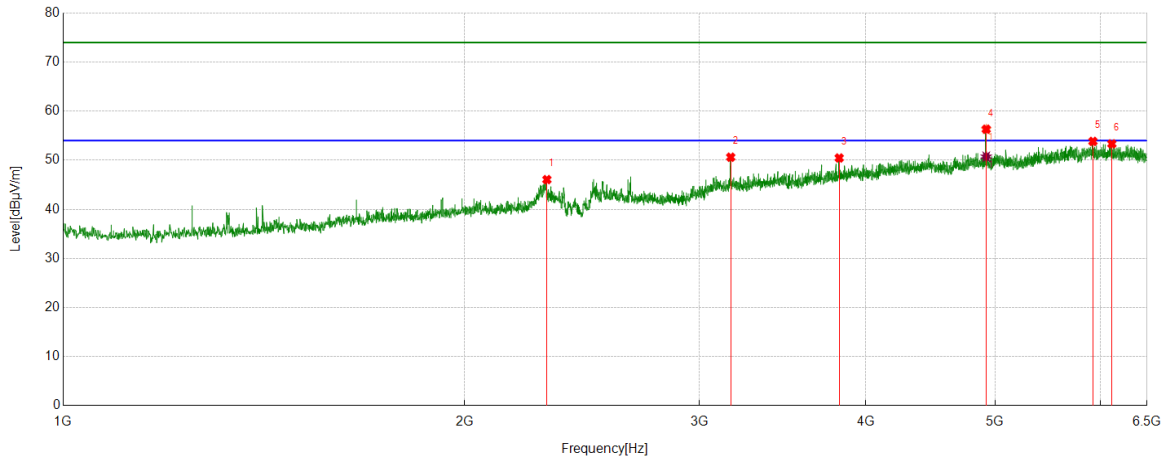


PK Result:

No.	Frequency	Reading Level	Correct Factor	Result	Limit	Margin	Remark
	[MHz]	[dBuV]	[dB/m]	[dBuV/m]	[dBuV/m]	[dB]	
1	2159.9575	38.75	4.22	42.97	74.00	-31.03	Horizontal
2	3181.7102	37.55	9.51	47.06	74.00	-26.94	Horizontal
3	4248.8436	36.29	13.96	50.25	74.00	-23.75	Horizontal
4	4924.0530	38.37	15.34	53.71	74.00	-20.29	Horizontal
5	5834.4168	35.37	18.42	53.79	74.00	-20.21	Horizontal
6	6024.1905	35.78	17.95	53.73	74.00	-20.27	Horizontal

- Note: 1. Measurement = Reading Level + Correct Factor,
Correct Factor = Antenna Factor + Loss (Cable + Filter) – Amplifier Gain.
2. If Peak Result complies with AV limit, AV Result is deemed to comply with AV limit.
3. Test setup: RBW: 1 MHz, VBW: 3 MHz, Sweep time: auto.
4. Peak: Peak detector.
5. For below 3GHz part, filter losses were only considered in the spurious frequency bands and the authorized band was not corrected for Band Reject Filter losses.
6. Only the worst case emission was recorded, if it complies with the limit, the other emissions deemed to comply with the limit.

Test Mode	Channel	Polarization	Verdict
11B	HCH	Vertical	PASS



PK Result:

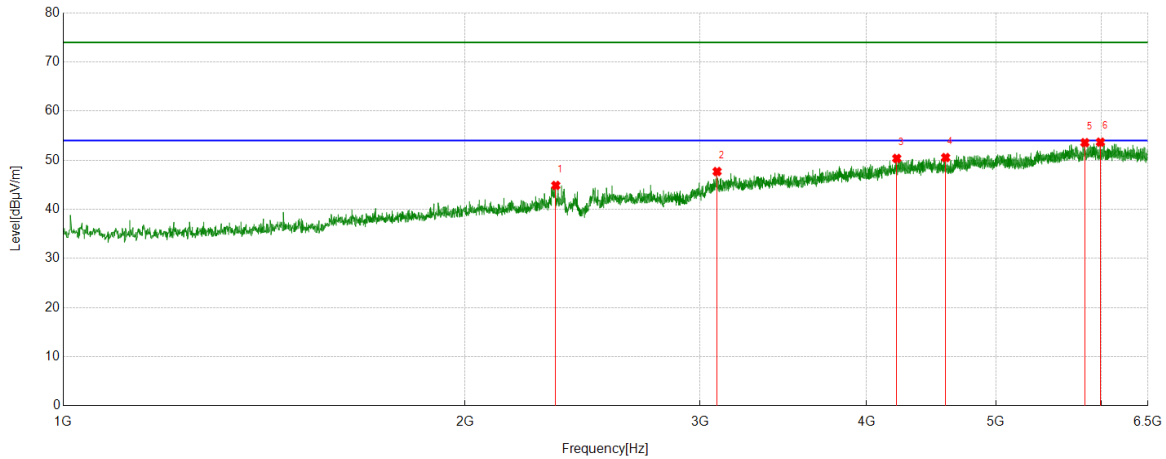
No.	Frequency	Reading Level	Correct Factor	Result	Limit	Margin	Remark
	[MHz]	[dBuV]	[dB/m]	[dBuV/m]	[dBuV/m]	[dB]	
1	2305.7257	41.86	4.20	46.06	74.00	-27.94	Vertical
2	3167.2709	41.26	9.36	50.62	74.00	-23.38	Vertical
3	3819.7900	38.08	12.38	50.46	74.00	-23.54	Vertical
4	4924.0530	40.98	15.34	56.32	74.00	-17.68	Vertical
5	5920.3650	35.14	18.70	53.84	74.00	-20.16	Vertical
6	6117.0146	35.17	18.17	53.34	74.00	-20.66	Vertical

AV Result:

No.	Frequency	Reading Level	Correct Factor	Result	Limit	Margin	Remark
	[MHz]	[dBuV]	[dB/m]	[dBuV/m]	[dBuV/m]	[dB]	
1	4924.053	35.38	15.34	50.72	54.00	-3.28	Vertical

- Note: 1. Measurement = Reading Level + Correct Factor,
Correct Factor = Antenna Factor + Loss (Cable + Filter) – Amplifier Gain.
2. If Peak Result complies with AV limit, AV Result is deemed to comply with AV limit.
3. Test setup: RBW: 1 MHz, VBW: 3 MHz, Sweep time: auto.
4. Peak: Peak detector.
5. For below 3GHz part, filter losses were only considered in the spurious frequency bands and the authorized band was not corrected for Band Reject Filter losses.
6. Only the worst case emission was recorded, if it complies with the limit, the other emissions deemed to comply with the limit.

Test Mode	Channel	Polarization	Verdict
11G	LCH	Horizontal	PASS

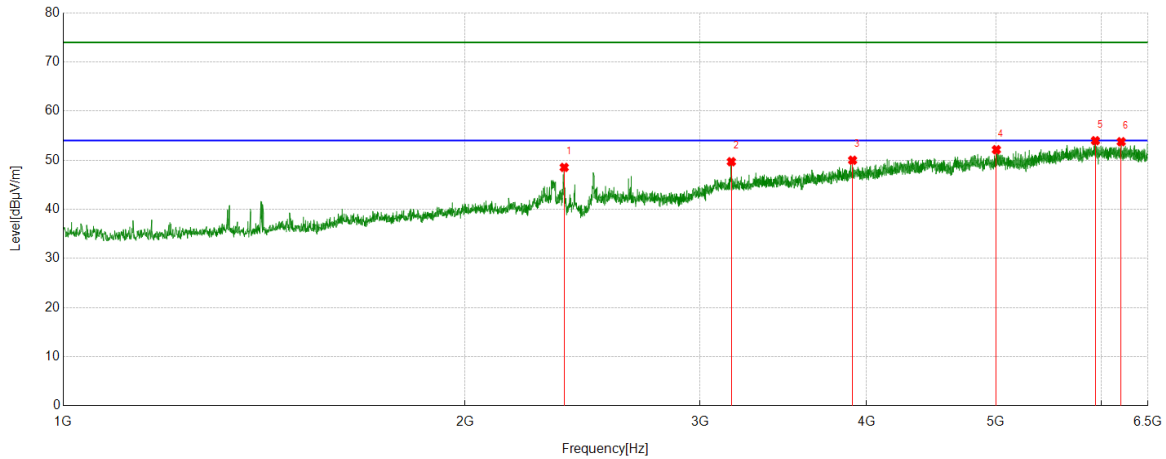


PK Result:

No.	Frequency	Reading Level	Correct Factor	Result	Limit	Margin	Remark
	[MHz]	[dBuV]	[dB/m]	[dBuV/m]	[dBuV/m]	[dB]	
1	2339.4174	39.88	4.99	44.87	74.00	-29.13	Horizontal
2	3090.2613	38.42	9.28	47.70	74.00	-26.30	Horizontal
3	4213.7767	36.79	13.58	50.37	74.00	-23.63	Horizontal
4	4584.3855	36.48	14.06	50.54	74.00	-23.46	Horizontal
5	5829.6037	34.90	18.69	53.59	74.00	-20.41	Horizontal
6	5987.7485	35.32	18.36	53.68	74.00	-20.32	Horizontal

- Note: 1. Measurement = Reading Level + Correct Factor,
Correct Factor = Antenna Factor + Loss (Cable + Filter) – Amplifier Gain.
2. If Peak Result complies with AV limit, AV Result is deemed to comply with AV limit.
3. Test setup: RBW: 1 MHz, VBW: 3 MHz, Sweep time: auto.
4. Peak: Peak detector.
5. For below 3GHz part, filter losses were only considered in the spurious frequency bands and the authorized band was not corrected for Band Reject Filter losses.
6. Only the worst case emission was recorded, if it complies with the limit, the other emissions deemed to comply with the limit.

Test Mode	Channel	Polarization	Verdict
11G	LCH	Vertical	PASS

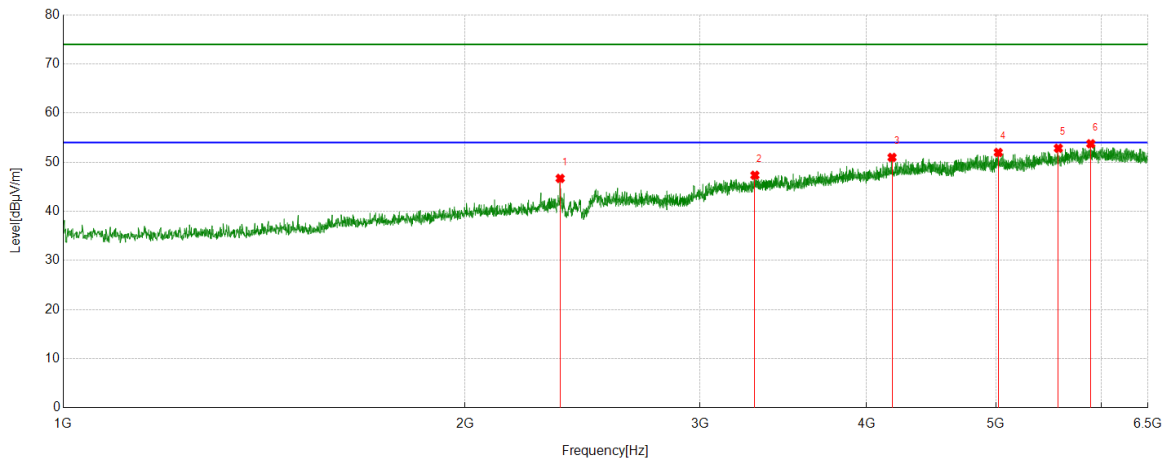


PK Result:

No.	Frequency	Reading Level	Correct Factor	Result	Limit	Margin	Remark
	[MHz]	[dBuV]	[dB/m]	[dBuV/m]	[dBuV/m]	[dB]	
1	2373.7967	43.72	4.82	48.54	74.00	-25.46	Vertical
2	3167.2709	40.34	9.36	49.70	74.00	-24.30	Vertical
3	3904.363	37.47	12.53	50.00	74.00	-24.00	Vertical
4	5003.813	36.81	15.33	52.14	74.00	-21.86	Vertical
5	5936.1795	35.37	18.61	53.98	74.00	-20.02	Vertical
6	6207.0884	35.17	18.60	53.77	74.00	-20.23	Vertical

- Note: 1. Measurement = Reading Level + Correct Factor,
Correct Factor = Antenna Factor + Loss (Cable + Filter) – Amplifier Gain.
2. If Peak Result complies with AV limit, AV Result is deemed to comply with AV limit.
3. Test setup: RBW: 1 MHz, VBW: 3 MHz, Sweep time: auto.
4. Peak: Peak detector.
5. For below 3GHz part, filter losses were only considered in the spurious frequency bands and the authorized band was not corrected for Band Reject Filter losses.
6. Only the worst case emission was recorded, if it complies with the limit, the other emissions deemed to comply with the limit.

Test Mode	Channel	Polarization	Verdict
11G	MCH	Horizontal	PASS

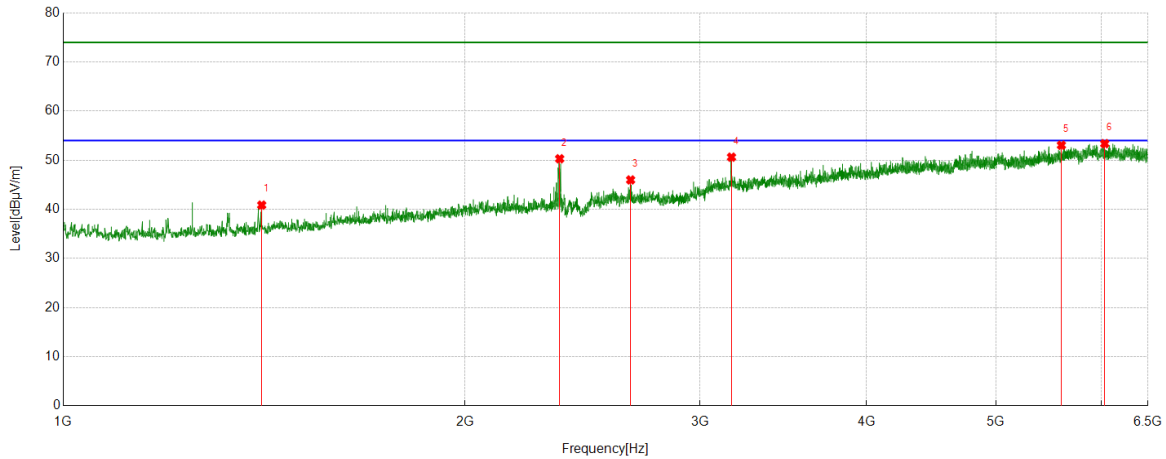


PK Result:

No.	Frequency	Reading Level	Correct Factor	Result	Limit	Margin	Remark
	[MHz]	[dBuV]	[dB/m]	[dBuV/m]	[dBuV/m]	[dB]	
1	2357.2947	41.92	4.78	46.70	74.00	-27.30	Horizontal
2	3298.5998	37.38	9.97	47.35	74.00	-26.65	Horizontal
3	4179.3974	37.84	13.14	50.98	74.00	-23.02	Horizontal
4	5020.315	36.48	15.51	51.99	74.00	-22.01	Horizontal
5	5568.321	35.68	17.17	52.85	74.00	-21.15	Horizontal
6	5889.4237	35.79	17.97	53.76	74.00	-20.24	Horizontal

- Note: 1. Measurement = Reading Level + Correct Factor,
Correct Factor = Antenna Factor + Loss (Cable + Filter) – Amplifier Gain.
2. If Peak Result complies with AV limit, AV Result is deemed to comply with AV limit.
3. Test setup: RBW: 1 MHz, VBW: 3 MHz, Sweep time: auto.
4. Peak: Peak detector.
5. For below 3GHz part, filter losses were only considered in the spurious frequency bands and the authorized band was not corrected for Band Reject Filter losses.
6. Only the worst case emission was recorded, if it complies with the limit, the other emissions deemed to comply with the limit.

Test Mode	Channel	Polarization	Verdict
11G	MCH	Vertical	PASS

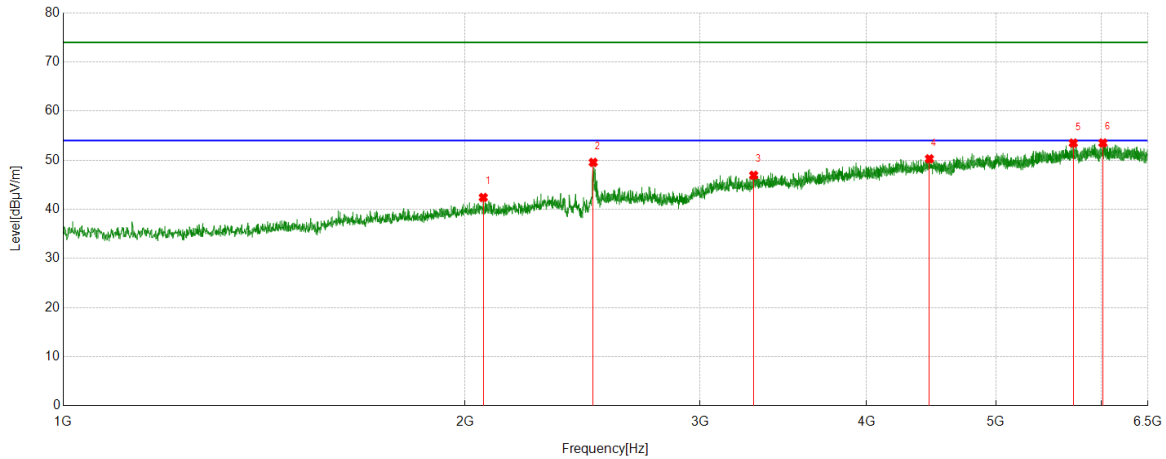


PK Result:

No.	Frequency	Reading Level	Correct Factor	Result	Limit	Margin	Remark
	[MHz]	[dBuV]	[dB/m]	[dBuV/m]	[dBuV/m]	[dB]	
1	1408.4261	42.19	-1.33	40.86	74.00	-33.14	Vertical
2	2355.2319	45.52	4.78	50.30	74.00	-23.70	Vertical
3	2661.8952	39.92	6.07	45.99	74.00	-28.01	Vertical
4	3167.9585	41.27	9.36	50.63	74.00	-23.37	Vertical
5	5597.8872	35.60	17.46	53.06	74.00	-20.94	Vertical
6	6033.1291	35.46	17.92	53.38	74.00	-20.62	Vertical

- Note: 1. Measurement = Reading Level + Correct Factor,
Correct Factor = Antenna Factor + Loss (Cable + Filter) – Amplifier Gain.
2. If Peak Result complies with AV limit, AV Result is deemed to comply with AV limit.
3. Test setup: RBW: 1 MHz, VBW: 3 MHz, Sweep time: auto.
4. Peak: Peak detector.
5. For below 3GHz part, filter losses were only considered in the spurious frequency bands and the authorized band was not corrected for Band Reject Filter losses.
6. Only the worst case emission was recorded, if it complies with the limit, the other emissions deemed to comply with the limit.

Test Mode	Channel	Polarization	Verdict
11G	HCH	Horizontal	PASS

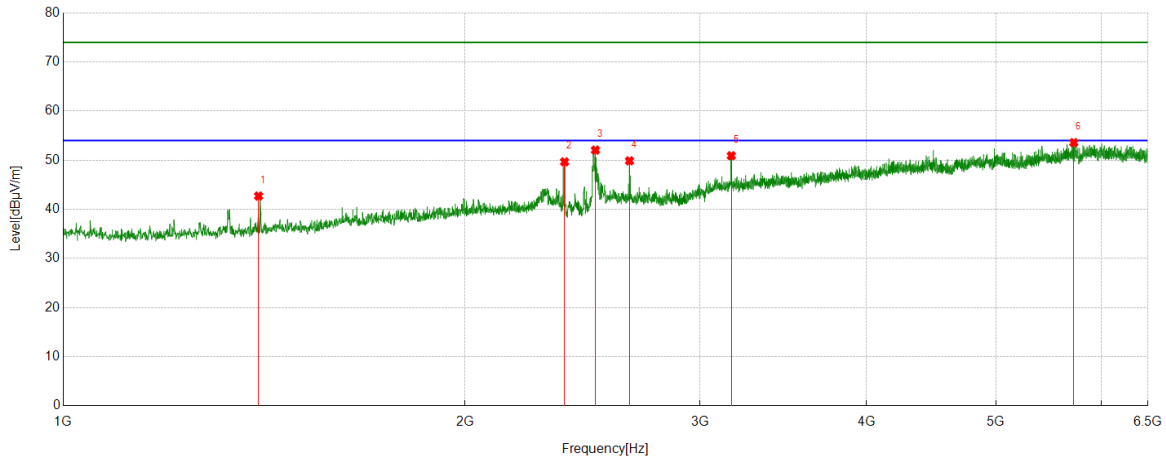


PK Result:

No.	Frequency	Reading Level	Correct Factor	Result	Limit	Margin	Remark
	[MHz]	[dBuV]	[dB/m]	[dBuV/m]	[dBuV/m]	[dB]	
1	2064.383	38.59	3.82	42.41	74.00	-31.59	Horizontal
2	2495.4994	43.71	5.85	49.56	74.00	-24.44	Horizontal
3	3291.724	36.96	9.97	46.93	74.00	-27.07	Horizontal
4	4457.8697	35.50	14.79	50.29	74.00	-23.71	Horizontal
5	5714.0893	35.94	17.55	53.49	74.00	-20.51	Horizontal
6	6013.8767	35.44	18.07	53.51	74.00	-20.49	Horizontal

- Note: 1. Measurement = Reading Level + Correct Factor,
Correct Factor = Antenna Factor + Loss (Cable + Filter) – Amplifier Gain.
2. If Peak Result complies with AV limit, AV Result is deemed to comply with AV limit.
3. Test setup: RBW: 1 MHz, VBW: 3 MHz, Sweep time: auto.
4. Peak: Peak detector.
5. For below 3GHz part, filter losses were only considered in the spurious frequency bands and the authorized band was not corrected for Band Reject Filter losses.
6. Only the worst case emission was recorded, if it complies with the limit, the other emissions deemed to comply with the limit.

Test Mode	Channel	Polarization	Verdict
11G	HCH	Vertical	PASS

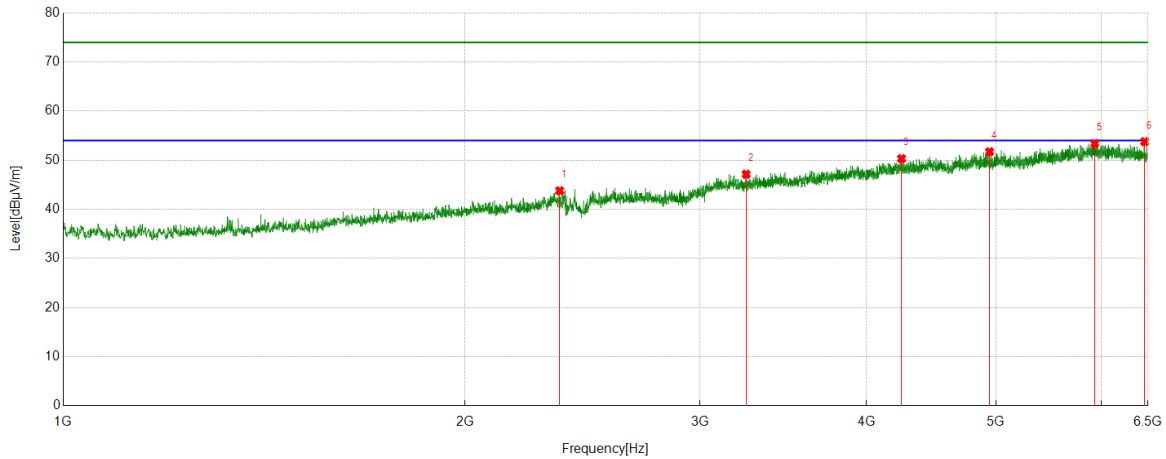


PK Result:

No.	Frequency	Reading Level	Correct Factor	Result	Limit	Margin	Remark
	[MHz]	[dBuV]	[dB/m]	[dBuV/m]	[dBuV/m]	[dB]	
1	1400.8626	44.10	-1.39	42.71	74.00	-31.29	Vertical
2	2375.1719	44.84	4.83	49.67	74.00	-24.33	Vertical
3	2505.1256	46.16	5.90	52.06	74.00	-21.94	Vertical
4	2657.0821	43.72	6.16	49.88	74.00	-24.12	Vertical
5	3167.2709	41.56	9.36	50.92	74.00	-23.08	Vertical
6	5718.9024	35.94	17.65	53.59	74.00	-20.41	Vertical

- Note: 1. Measurement = Reading Level + Correct Factor,
Correct Factor = Antenna Factor + Loss (Cable + Filter) – Amplifier Gain.
2. If Peak Result complies with AV limit, AV Result is deemed to comply with AV limit.
3. Test setup: RBW: 1 MHz, VBW: 3 MHz, Sweep time: auto.
4. Peak: Peak detector.
5. For below 3GHz part, filter losses were only considered in the spurious frequency bands and the authorized band was not corrected for Band Reject Filter losses.
6. Only the worst case emission was recorded, if it complies with the limit, the other emissions deemed to comply with the limit.

Test Mode	Channel	Polarization	Verdict
11N HT20	LCH	Horizontal	PASS

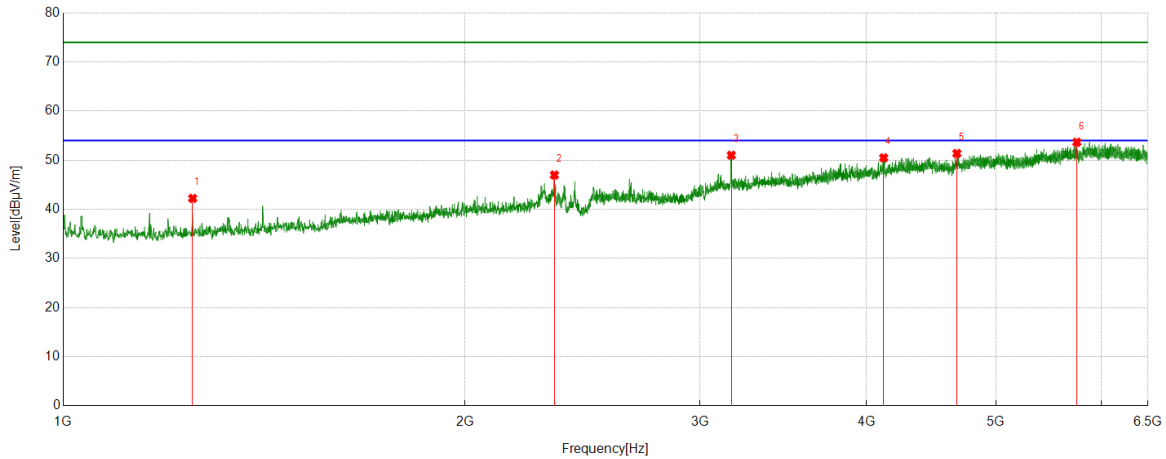


PK Result:

No.	Frequency	Reading Level	Correct Factor	Result	Limit	Margin	Remark
	[MHz]	[dBuV]	[dB/m]	[dBuV/m]	[dBuV/m]	[dB]	
1	2355.2319	39.01	4.78	43.79	74.00	-30.21	Horizontal
2	3249.0936	37.76	9.39	47.15	74.00	-26.85	Horizontal
3	4248.156	36.37	13.96	50.33	74.00	-23.67	Horizontal
4	4945.3682	36.41	15.32	51.73	74.00	-22.27	Horizontal
5	5929.3037	34.50	18.91	53.41	74.00	-20.59	Horizontal
6	6462.8704	34.93	18.86	53.79	74.00	-20.21	Horizontal

- Note: 1. Measurement = Reading Level + Correct Factor,
Correct Factor = Antenna Factor + Loss (Cable + Filter) – Amplifier Gain.
2. If Peak Result complies with AV limit, AV Result is deemed to comply with AV limit.
3. Test setup: RBW: 1 MHz, VBW: 3 MHz, Sweep time: auto.
4. Peak: Peak detector.
5. For below 3GHz part, filter losses were only considered in the spurious frequency bands and the authorized band was not corrected for Band Reject Filter losses.
6. Only the worst case emission was recorded, if it complies with the limit, the other emissions deemed to comply with the limit.

Test Mode	Channel	Polarization	Verdict
11N HT20	LCH	Vertical	PASS

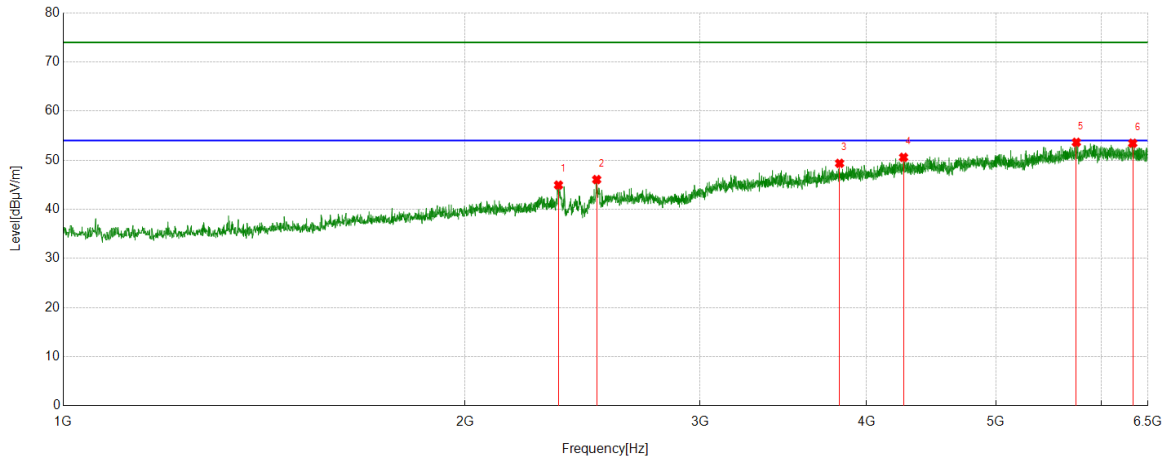


PK Result:

No.	Frequency	Reading Level	Correct Factor	Result	Limit	Margin	Remark
	[MHz]	[dBuV]	[dB/m]	[dBuV/m]	[dBuV/m]	[dB]	
1	1250.2813	43.75	-1.52	42.23	74.00	-31.77	Vertical
2	2333.9167	41.97	5.02	46.99	74.00	-27.01	Vertical
3	3167.2709	41.66	9.36	51.02	74.00	-22.98	Vertical
4	4119.5774	36.58	13.91	50.49	74.00	-23.51	Vertical
5	4674.4593	36.41	14.98	51.39	74.00	-22.61	Vertical
6	5749.1561	35.99	17.68	53.67	74.00	-20.33	Vertical

- Note: 1. Measurement = Reading Level + Correct Factor,
Correct Factor = Antenna Factor + Loss (Cable + Filter) – Amplifier Gain.
2. If Peak Result complies with AV limit, AV Result is deemed to comply with AV limit.
3. Test setup: RBW: 1 MHz, VBW: 3 MHz, Sweep time: auto.
4. Peak: Peak detector.
5. For below 3GHz part, filter losses were only considered in the spurious frequency bands and the authorized band was not corrected for Band Reject Filter losses.
6. Only the worst case emission was recorded, if it complies with the limit, the other emissions deemed to comply with the limit.

Test Mode	Channel	Polarization	Verdict
11N HT20	MCH	Horizontal	PASS

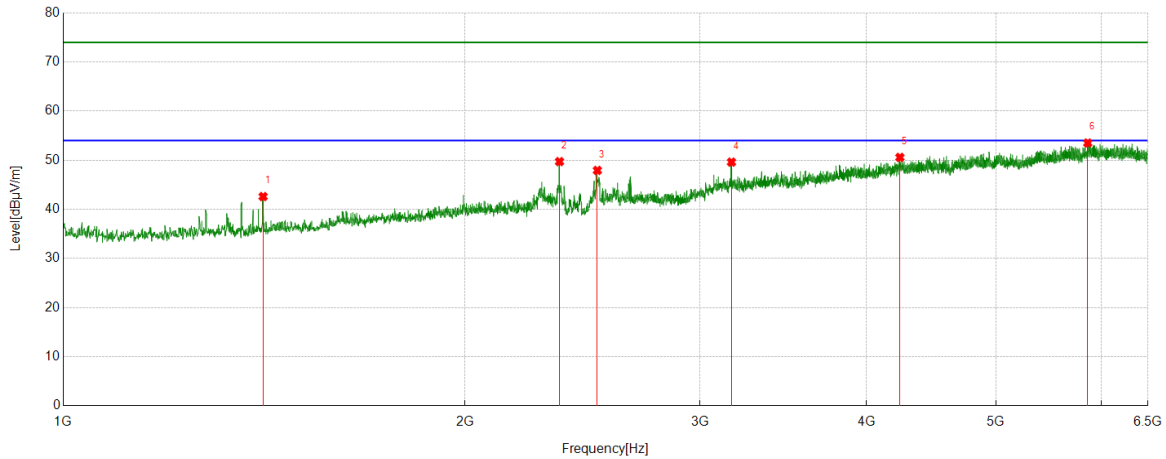


PK Result:

No.	Frequency	Reading Level	Correct Factor	Result	Limit	Margin	Remark
	[MHz]	[dBuV]	[dB/m]	[dBuV/m]	[dBuV/m]	[dB]	
1	2350.4188	40.17	4.77	44.94	74.00	-29.06	Horizontal
2	2510.6263	40.16	5.90	46.06	74.00	-27.94	Horizontal
3	3817.7272	37.12	12.25	49.37	74.00	-24.63	Horizontal
4	4263.2829	36.59	14.00	50.59	74.00	-23.41	Horizontal
5	5744.343	35.88	17.77	53.65	74.00	-20.35	Horizontal
6	6331.5414	34.39	19.07	53.46	74.00	-20.54	Horizontal

- Note: 1. Measurement = Reading Level + Correct Factor,
Correct Factor = Antenna Factor + Loss (Cable + Filter) – Amplifier Gain.
2. If Peak Result complies with AV limit, AV Result is deemed to comply with AV limit.
3. Test setup: RBW: 1 MHz, VBW: 3 MHz, Sweep time: auto.
4. Peak: Peak detector.
5. For below 3GHz part, filter losses were only considered in the spurious frequency bands and the authorized band was not corrected for Band Reject Filter losses.
6. Only the worst case emission was recorded, if it complies with the limit, the other emissions deemed to comply with the limit.

Test Mode	Channel	Polarization	Verdict
11N HT20	MCH	Vertical	PASS

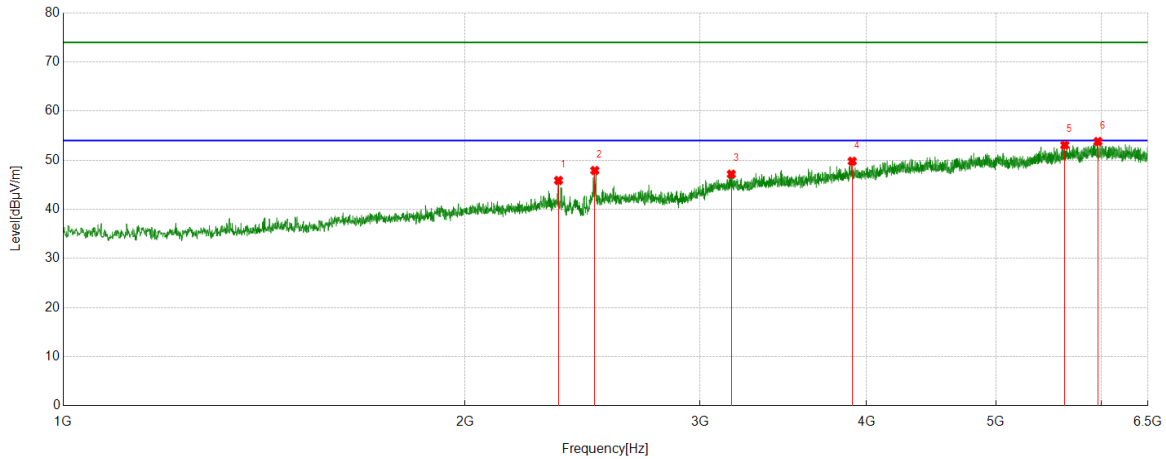


PK Result:

No.	Frequency	Reading Level	Correct Factor	Result	Limit	Margin	Remark
	[MHz]	[dBuV]	[dB/m]	[dBuV/m]	[dBuV/m]	[dB]	
1	1411.864	43.88	-1.28	42.60	74.00	-31.40	Vertical
2	2354.5443	44.95	4.77	49.72	74.00	-24.28	Vertical
3	2513.3767	42.09	5.84	47.93	74.00	-26.07	Vertical
4	3167.9585	40.26	9.36	49.62	74.00	-24.38	Vertical
5	4236.4671	36.66	13.92	50.58	74.00	-23.42	Vertical
6	5858.4823	35.68	17.83	53.51	74.00	-20.49	Vertical

- Note: 1. Measurement = Reading Level + Correct Factor,
Correct Factor = Antenna Factor + Loss (Cable + Filter) – Amplifier Gain.
2. If Peak Result complies with AV limit, AV Result is deemed to comply with AV limit.
3. Test setup: RBW: 1 MHz, VBW: 3 MHz, Sweep time: auto.
4. Peak: Peak detector.
5. For below 3GHz part, filter losses were only considered in the spurious frequency bands and the authorized band was not corrected for Band Reject Filter losses.
6. Only the worst case emission was recorded, if it complies with the limit, the other emissions deemed to comply with the limit.

Test Mode	Channel	Polarization	Verdict
11N HT20	HCH	Horizontal	PASS

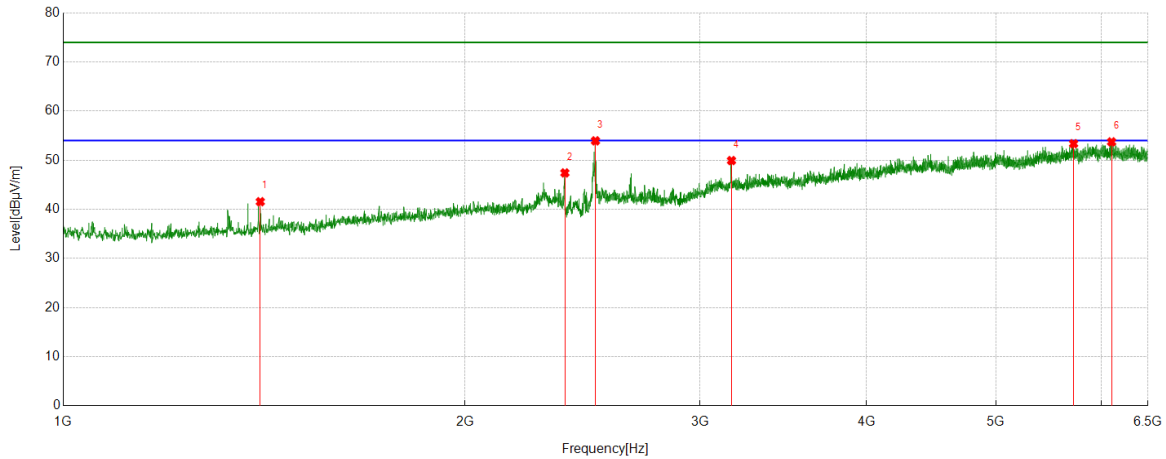


PK Result:

No.	Frequency	Reading Level	Correct Factor	Result	Limit	Margin	Remark
	[MHz]	[dBuV]	[dB/m]	[dBuV/m]	[dBuV/m]	[dB]	
1	2350.4188	41.11	4.77	45.88	74.00	-28.12	Horizontal
2	2502.3753	42.03	5.88	47.91	74.00	-26.09	Horizontal
3	3167.2709	37.80	9.36	47.16	74.00	-26.84	Horizontal
4	3901.6127	37.28	12.51	49.79	74.00	-24.21	Horizontal
5	5630.8914	35.48	17.60	53.08	74.00	-20.92	Horizontal
6	5962.9954	35.46	18.35	53.81	74.00	-20.19	Horizontal

- Note: 1. Measurement = Reading Level + Correct Factor,
Correct Factor = Antenna Factor + Loss (Cable + Filter) – Amplifier Gain.
2. If Peak Result complies with AV limit, AV Result is deemed to comply with AV limit.
3. Test setup: RBW: 1 MHz, VBW: 3 MHz, Sweep time: auto.
4. Peak: Peak detector.
5. For below 3GHz part, filter losses were only considered in the spurious frequency bands and the authorized band was not corrected for Band Reject Filter losses.
6. Only the worst case emission was recorded, if it complies with the limit, the other emissions deemed to comply with the limit.

Test Mode	Channel	Polarization	Verdict
11N HT20	HCH	Vertical	PASS

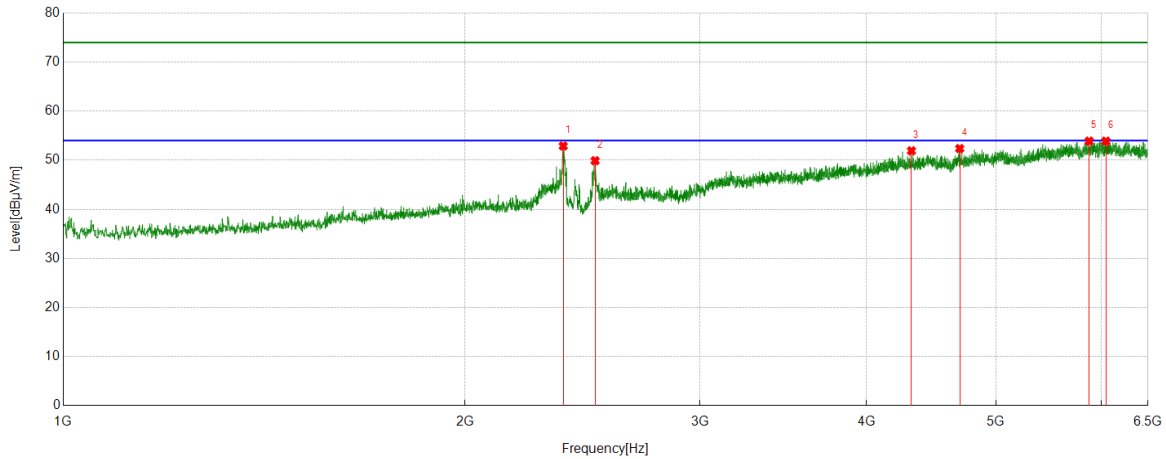


PK Result:

No.	Frequency	Reading Level	Correct Factor	Result	Limit	Margin	Remark
	[MHz]	[dBuV]	[dB/m]	[dBuV/m]	[dBuV/m]	[dB]	
1	1404.9881	42.90	-1.35	41.55	74.00	-32.45	Vertical
2	2376.5471	42.59	4.83	47.42	74.00	-26.58	Vertical
3	2505.1256	48.05	5.90	53.95	74.00	-20.05	Vertical
4	3167.9585	40.57	9.36	49.93	74.00	-24.07	Vertical
5	5716.8396	35.77	17.60	53.37	74.00	-20.63	Vertical
6	6103.9505	35.53	18.21	53.74	74.00	-20.26	Vertical

- Note: 1. Measurement = Reading Level + Correct Factor,
Correct Factor = Antenna Factor + Loss (Cable + Filter) – Amplifier Gain.
2. If Peak Result complies with AV limit, AV Result is deemed to comply with AV limit.
3. Test setup: RBW: 1 MHz, VBW: 3 MHz, Sweep time: auto.
4. Peak: Peak detector.
5. For below 3GHz part, filter losses were only considered in the spurious frequency bands and the authorized band was not corrected for Band Reject Filter losses.
6. Only the worst case emission was recorded, if it complies with the limit, the other emissions deemed to comply with the limit.

Test Mode	Channel	Polarization	Verdict
11N HT40	LCH	Horizontal	PASS

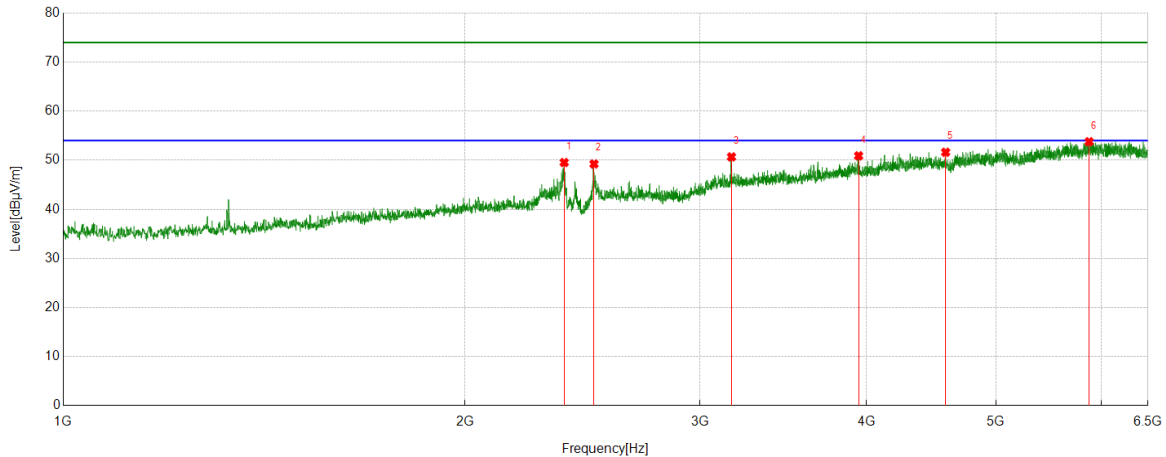


PK Result:

No.	Frequency	Reading Level	Correct Factor	Result	Limit	Margin	Remark
	[MHz]	[dBuV]	[dB/m]	[dBuV/m]	[dBuV/m]	[dB]	
1	2369.6712	48.09	4.81	52.90	74.00	-21.10	Horizontal
2	2503.7505	44.01	5.89	49.90	74.00	-24.10	Horizontal
3	4321.7277	38.46	13.46	51.92	74.00	-22.08	Horizontal
4	4697.1496	37.35	15.03	52.38	74.00	-21.62	Horizontal
5	5872.234	36.04	17.86	53.90	74.00	-20.10	Horizontal
6	6044.1305	35.92	17.97	53.89	74.00	-20.11	Horizontal

- Note: 1. Measurement = Reading Level + Correct Factor,
Correct Factor = Antenna Factor + Loss (Cable + Filter) – Amplifier Gain.
2. If Peak Result complies with AV limit, AV Result is deemed to comply with AV limit.
3. Test setup: RBW: 1 MHz, VBW: 3 MHz, Sweep time: auto.
4. Peak: Peak detector.
5. For below 3GHz part, filter losses were only considered in the spurious frequency bands and the authorized band was not corrected for Band Reject Filter losses.
6. Only the worst case emission was recorded, if it complies with the limit, the other emissions deemed to comply with the limit.

Test Mode	Channel	Polarization	Verdict
11N HT40	LCH	Vertical	PASS

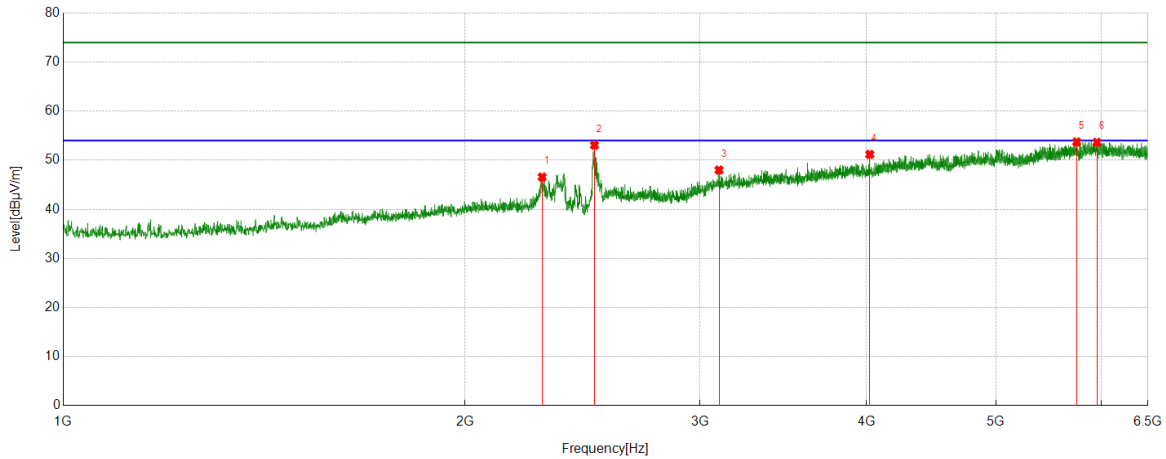


PK Result:

No.	Frequency	Reading Level	Correct Factor	Result	Limit	Margin	Remark
	[MHz]	[dBuV]	[dB/m]	[dBuV/m]	[dBuV/m]	[dB]	
1	2373.7967	44.72	4.82	49.54	74.00	-24.46	Vertical
2	2498.9374	43.37	5.87	49.24	74.00	-24.76	Vertical
3	3167.9585	41.32	9.36	50.68	74.00	-23.32	Vertical
4	3944.9306	38.58	12.32	50.90	74.00	-23.10	Vertical
5	4584.3855	37.57	14.06	51.63	74.00	-22.37	Vertical
6	5872.234	35.92	17.86	53.78	74.00	-20.22	Vertical

- Note: 1. Measurement = Reading Level + Correct Factor,
Correct Factor = Antenna Factor + Loss (Cable + Filter) – Amplifier Gain.
2. If Peak Result complies with AV limit, AV Result is deemed to comply with AV limit.
3. Test setup: RBW: 1 MHz, VBW: 3 MHz, Sweep time: auto.
4. Peak: Peak detector.
5. For below 3GHz part, filter losses were only considered in the spurious frequency bands and the authorized band was not corrected for Band Reject Filter losses.
6. Only the worst case emission was recorded, if it complies with the limit, the other emissions deemed to comply with the limit.

Test Mode	Channel	Polarization	Verdict
11N HT40	MCH	Horizontal	PASS

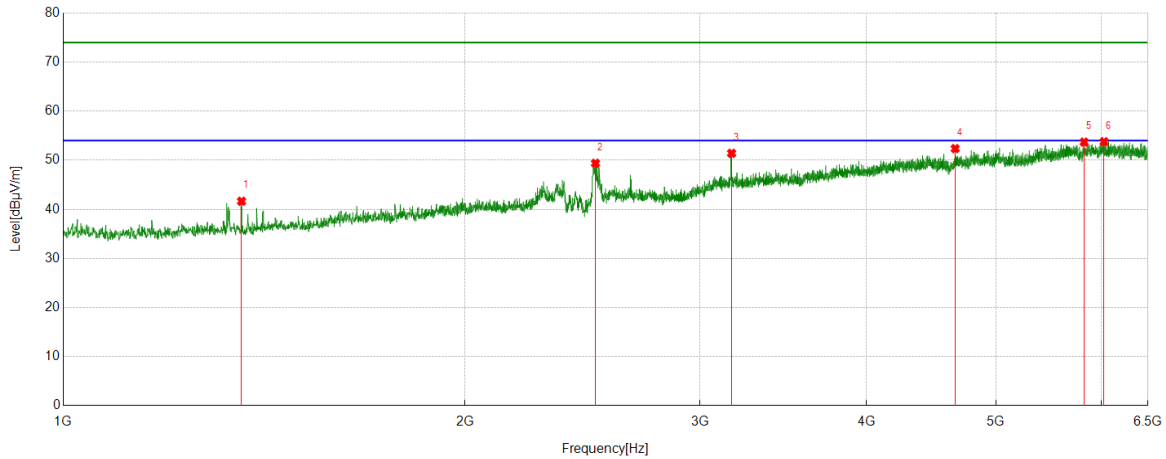


PK Result:

No.	Frequency	Reading Level	Correct Factor	Result	Limit	Margin	Remark
	[MHz]	[dBuV]	[dB/m]	[dBuV/m]	[dBuV/m]	[dB]	
1	2285.0981	42.38	4.21	46.59	74.00	-27.41	Horizontal
2	2501.0001	47.18	5.88	53.06	74.00	-20.94	Horizontal
3	3100.5751	38.44	9.56	48.00	74.00	-26.00	Horizontal
4	4021.9402	38.83	12.36	51.19	74.00	-22.81	Horizontal
5	5747.781	36.03	17.70	53.73	74.00	-20.27	Horizontal
6	5951.3064	35.17	18.48	53.65	74.00	-20.35	Horizontal

- Note: 1. Measurement = Reading Level + Correct Factor,
Correct Factor = Antenna Factor + Loss (Cable + Filter) – Amplifier Gain.
2. If Peak Result complies with AV limit, AV Result is deemed to comply with AV limit.
3. Test setup: RBW: 1 MHz, VBW: 3 MHz, Sweep time: auto.
4. Peak: Peak detector.
5. For below 3GHz part, filter losses were only considered in the spurious frequency bands and the authorized band was not corrected for Band Reject Filter losses.
6. Only the worst case emission was recorded, if it complies with the limit, the other emissions deemed to comply with the limit.

Test Mode	Channel	Polarization	Verdict
11N HT40	MCH	Vertical	PASS

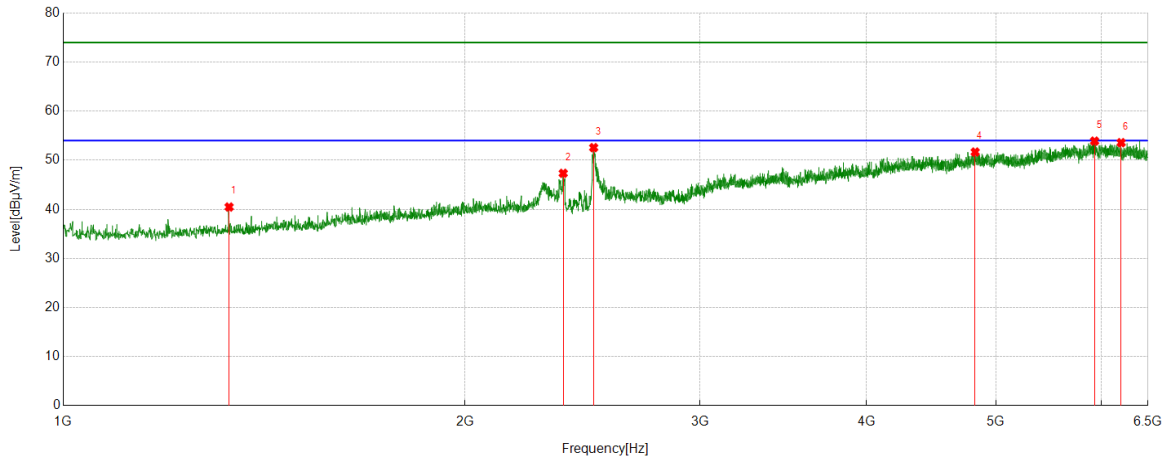


PK Result:

No.	Frequency	Reading Level	Correct Factor	Result	Limit	Margin	Remark
	[MHz]	[dBuV]	[dB/m]	[dBuV/m]	[dBuV/m]	[dB]	
1	1360.295	43.00	-1.35	41.65	74.00	-32.35	Vertical
2	2505.1256	43.48	5.90	49.38	74.00	-24.62	Vertical
3	3168.6461	42.06	9.36	51.42	74.00	-22.58	Vertical
4	4660.7076	37.75	14.62	52.37	74.00	-21.63	Vertical
5	5822.0403	35.04	18.66	53.70	74.00	-20.30	Vertical
6	6025.5657	35.82	17.95	53.77	74.00	-20.23	Vertical

- Note: 1. Measurement = Reading Level + Correct Factor,
Correct Factor = Antenna Factor + Loss (Cable + Filter) – Amplifier Gain.
2. If Peak Result complies with AV limit, AV Result is deemed to comply with AV limit.
3. Test setup: RBW: 1 MHz, VBW: 3 MHz, Sweep time: auto.
4. Peak: Peak detector.
5. For below 3GHz part, filter losses were only considered in the spurious frequency bands and the authorized band was not corrected for Band Reject Filter losses.
6. Only the worst case emission was recorded, if it complies with the limit, the other emissions deemed to comply with the limit.

Test Mode	Channel	Polarization	Verdict
11N HT40	HCH	Horizontal	PASS

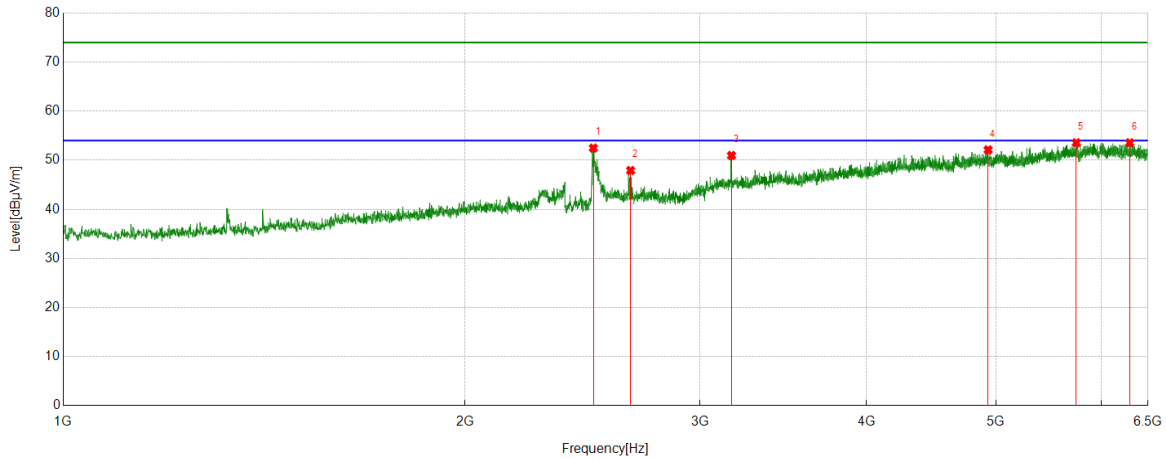


PK Result:

No.	Frequency	Reading Level	Correct Factor	Result	Limit	Margin	Remark
	[MHz]	[dBuV]	[dB/m]	[dBuV/m]	[dBuV/m]	[dB]	
1	1331.4164	41.56	-1.09	40.47	74.00	-33.53	Horizontal
2	2369.6712	42.53	4.81	47.34	74.00	-26.66	Horizontal
3	2497.5622	46.70	5.87	52.57	74.00	-21.43	Horizontal
4	4824.353	36.00	15.67	51.67	74.00	-22.33	Horizontal
5	5927.9285	35.02	18.88	53.90	74.00	-20.10	Horizontal
6	6205.7132	34.97	18.61	53.58	74.00	-20.42	Horizontal

- Note: 1. Measurement = Reading Level + Correct Factor,
Correct Factor = Antenna Factor + Loss (Cable + Filter) – Amplifier Gain.
2. If Peak Result complies with AV limit, AV Result is deemed to comply with AV limit.
3. Test setup: RBW: 1 MHz, VBW: 3 MHz, Sweep time: auto.
4. Peak: Peak detector.
5. For below 3GHz part, filter losses were only considered in the spurious frequency bands and the authorized band was not corrected for Band Reject Filter losses.
6. Only the worst case emission was recorded, if it complies with the limit, the other emissions deemed to comply with the limit.

Test Mode	Channel	Polarization	Verdict
11N HT40	HCH	Vertical	PASS



PK Result:

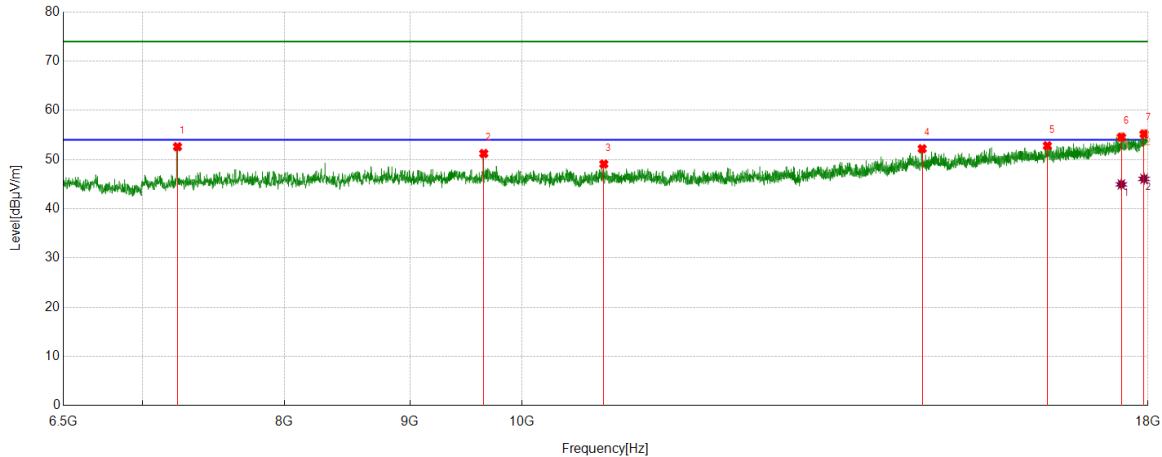
No.	Frequency	Reading Level	Correct Factor	Result	Limit	Margin	Remark
	[MHz]	[dBuV]	[dB/m]	[dBuV/m]	[dBuV/m]	[dB]	
1	2496.187	46.62	5.86	52.48	74.00	-21.52	Vertical
2	2661.8952	41.84	6.07	47.91	74.00	-26.09	Vertical
3	3167.9585	41.61	9.36	50.97	74.00	-23.03	Vertical
4	4932.9916	36.75	15.36	52.11	74.00	-21.89	Vertical
5	5743.6555	35.78	17.78	53.56	74.00	-20.44	Vertical
6	6298.5373	34.80	18.76	53.56	74.00	-20.44	Vertical

- Note: 1. Measurement = Reading Level + Correct Factor,
Correct Factor = Antenna Factor + Loss (Cable + Filter) – Amplifier Gain.
2. If Peak Result complies with AV limit, AV Result is deemed to comply with AV limit.
3. Test setup: RBW: 1 MHz, VBW: 3 MHz, Sweep time: auto.
4. Peak: Peak detector.
5. For below 3GHz part, filter losses were only considered in the spurious frequency bands and the authorized band was not corrected for Band Reject Filter losses.
6. Only the worst case emission was recorded, if it complies with the limit, the other emissions deemed to comply with the limit.

Part 2: 6.5GHz~18GHz

HARMONICS AND SPURIOUS EMISSIONS

Test Mode	Channel	Polarization	Verdict
11B	LCH	Horizontal	PASS



PK Result:

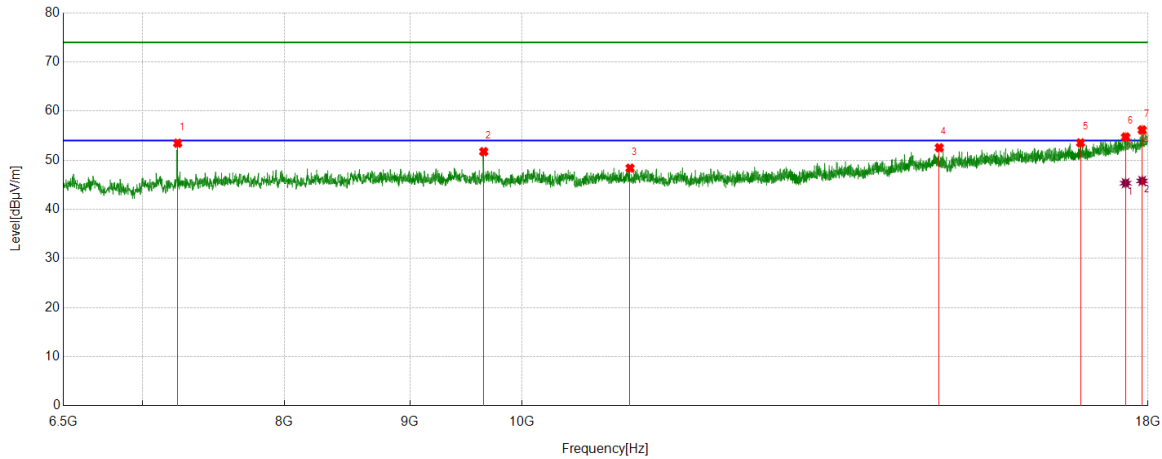
No.	Frequency	Reading Level	Correct Factor	Result	Limit	Margin	Remark
	[MHz]	[dBuV]	[dB/m]	[dBuV/m]	[dBuV/m]	[dB]	
1	7236.092	48.81	3.81	52.62	74.00	-21.38	Horizontal
2	9647.0809	44.84	6.39	51.23	74.00	-22.77	Horizontal
3	10798.6623	42.07	7.02	49.09	74.00	-24.91	Horizontal
4	14561.0701	39.42	12.78	52.20	74.00	-21.80	Horizontal
5	16376.8596	37.75	15.06	52.81	74.00	-21.19	Horizontal
6	17555.757	36.80	17.77	54.57	74.00	-19.43	Horizontal
7	17933.8667	35.81	19.40	55.21	74.00	-18.79	Horizontal

AV Result:

No.	Frequency	Reading Level	Correct Factor	Result	Limit	Margin	Remark
	[MHz]	[dBuV]	[dB/m]	[dBuV/m]	[dBuV/m]	[dB]	
1	17555.757	27.19	17.77	44.96	54.00	-9.04	Horizontal
2	17933.8667	26.68	19.40	46.08	54.00	-7.92	Horizontal

- Note: 1. Measurement = Reading Level + Correct Factor,
Correct Factor = Antenna Factor + Loss (Cable + Filter) – Amplifier Gain.
2. If Peak Result complies with AV limit, AV Result is deemed to comply with AV limit.
 3. Peak detector: RBW: 1 MHz, VBW: 3 MHz.
 4. Average detector: RBW: 1 MHz, VBW: 1/T MHz(refer to clause 7.1.).
 5. For above 3GHz part, filter losses were only considered in the spurious frequency bands and the authorized band was not corrected for HPF losses.
 6. Only the worst case emission was recorded, if it complies with the limit, the other emissions deemed to comply with the limit.

Test Mode	Channel	Polarization	Verdict
11B	LCH	Vertical	PASS



PK Result:

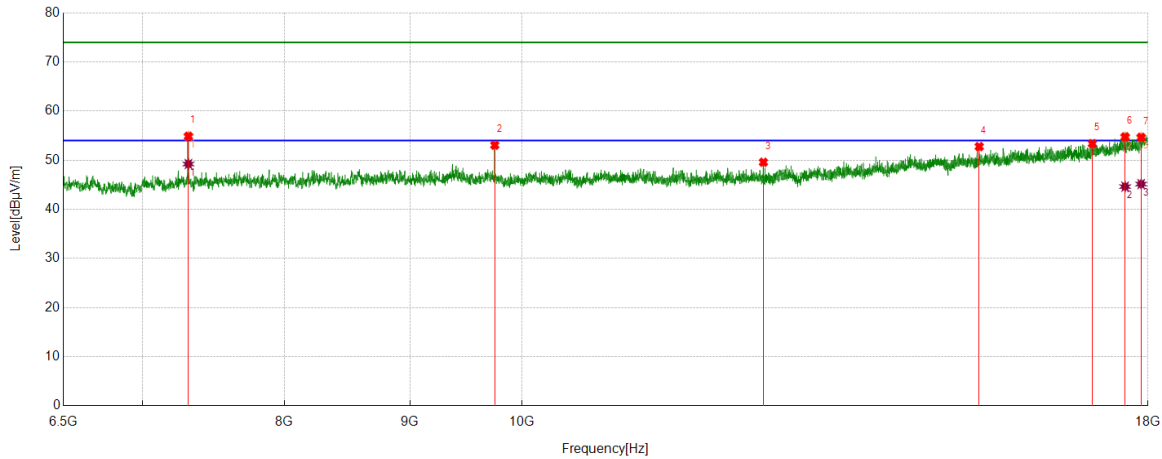
No.	Frequency	Reading Level	Correct Factor	Result	Limit	Margin	Remark
	[MHz]	[dBuV]	[dB/m]	[dBuV/m]	[dBuV/m]	[dB]	
1	7237.5297	49.69	3.78	53.47	74.00	-20.53	Vertical
2	9647.0809	45.36	6.39	51.75	74.00	-22.25	Vertical
3	11067.5084	41.13	7.26	48.39	74.00	-25.61	Vertical
4	14796.8496	39.71	12.84	52.55	74.00	-21.45	Vertical
5	16895.862	37.47	16.07	53.54	74.00	-20.46	Vertical
6	17626.2033	36.67	18.06	54.73	74.00	-19.27	Vertical
7	17902.2378	36.97	19.20	56.17	74.00	-17.83	Vertical

AV Result:

No.	Frequency	Reading Level	Correct Factor	Result	Limit	Margin	Remark
	[MHz]	[dBuV]	[dB/m]	[dBuV/m]	[dBuV/m]	[dB]	
1	17626.2033	27.27	18.06	45.33	54.00	-8.67	Vertical
2	17902.2378	26.59	19.20	45.79	54.00	-8.21	Vertical

- Note: 1. Measurement = Reading Level + Correct Factor,
Correct Factor = Antenna Factor + Loss (Cable + Filter) – Amplifier Gain.
2. If Peak Result complies with AV limit, AV Result is deemed to comply with AV limit.
3. Peak detector: RBW: 1 MHz, VBW: 3 MHz.
4. Average detector: RBW: 1 MHz, VBW: 1/T MHz (refer to clause 7.1.).
5. For above 3GHz part, filter losses were only considered in the spurious frequency bands and the authorized band was not corrected for HPF losses.
6. Only the worst case emission was recorded, if it complies with the limit, the other emissions deemed to comply with the limit.

Test Mode	Channel	Polarization	Verdict
11B	MCH	Horizontal	PASS



PK Result:

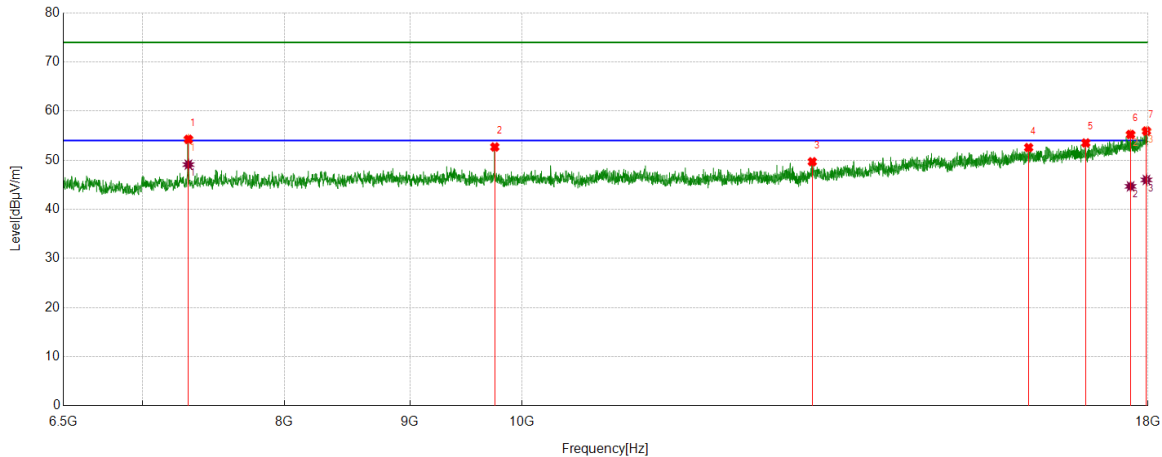
No.	Frequency	Reading Level	Correct Factor	Result	Limit	Margin	Remark
	[MHz]	[dBuV]	[dB/m]	[dBuV/m]	[dBuV/m]	[dB]	
1	7310.8514	51.04	3.85	54.89	74.00	-19.11	Horizontal
2	9747.7185	46.59	6.48	53.07	74.00	-20.93	Horizontal
3	12544.0055	40.95	8.64	49.59	74.00	-24.41	Horizontal
4	15361.8577	39.16	13.62	52.78	74.00	-21.22	Horizontal
5	17084.198	37.00	16.38	53.38	74.00	-20.62	Horizontal
6	17617.5772	36.69	18.07	54.76	74.00	-19.24	Horizontal
7	17884.9856	35.42	19.24	54.66	74.00	-19.34	Horizontal

AV Result:

No.	Frequency	Reading Level	Correct Factor	Result	Limit	Margin	Remark
	[MHz]	[dBuV]	[dB/m]	[dBuV/m]	[dBuV/m]	[dB]	
1	7310.8514	45.38	3.85	49.23	54.00	-4.77	Horizontal
2	17617.5772	26.56	18.07	44.63	54.00	-9.37	Horizontal
3	17884.9856	25.91	19.24	45.15	54.00	-8.85	Horizontal

- Note: 1. Measurement = Reading Level + Correct Factor,
Correct Factor = Antenna Factor + Loss (Cable + Filter) – Amplifier Gain.
- If Peak Result complies with AV limit, AV Result is deemed to comply with AV limit.
 - Peak detector: RBW: 1 MHz, VBW: 3 MHz.
 - Average detector: RBW: 1 MHz, VBW: 1/T MHz(refer to clause 7.1.).
 - For above 3GHz part, filter losses were only considered in the spurious frequency bands and the authorized band was not corrected for HPF losses.
 - Only the worst case emission was recorded, if it complies with the limit, the other emissions deemed to comply with the limit.

Test Mode	Channel	Polarization	Verdict
11B	MCH	Vertical	PASS



PK Result:

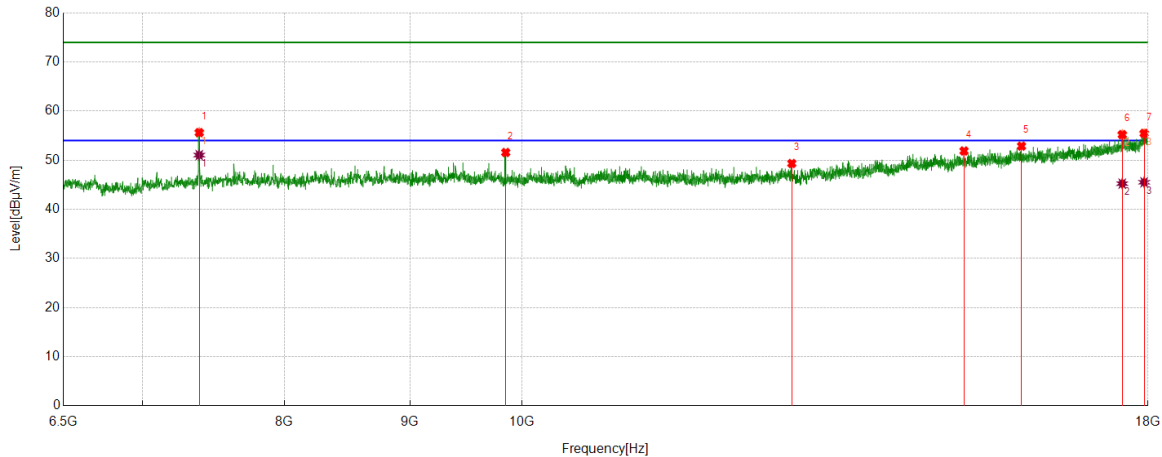
No.	Frequency	Reading Level	Correct Factor	Result	Limit	Margin	Remark
	[MHz]	[dBuV]	[dB/m]	[dBuV/m]	[dBuV/m]	[dB]	
1	7310.8514	50.41	3.85	54.26	74.00	-19.74	Vertical
2	9747.7185	46.22	6.48	52.70	74.00	-21.30	Vertical
3	13133.4542	40.08	9.62	49.70	74.00	-24.30	Vertical
4	16092.199	37.90	14.68	52.58	74.00	-21.42	Vertical
5	16979.2474	37.42	16.10	53.52	74.00	-20.48	Vertical
6	17708.151	36.90	18.35	55.25	74.00	-18.75	Vertical
7	17974.1218	36.25	19.70	55.95	74.00	-18.05	Vertical

AV Result:

No.	Frequency	Reading Level	Correct Factor	Result	Limit	Margin	Remark
	[MHz]	[dBuV]	[dB/m]	[dBuV/m]	[dBuV/m]	[dB]	
1	7310.8514	45.26	3.85	49.11	54.00	-4.89	Vertical
2	17708.151	26.33	18.35	44.68	54.00	-9.32	Vertical
3	17974.1218	26.29	19.70	45.99	54.00	-8.01	Vertical

- Note: 1. Measurement = Reading Level + Correct Factor,
Correct Factor = Antenna Factor + Loss (Cable + Filter) – Amplifier Gain.
- If Peak Result complies with AV limit, AV Result is deemed to comply with AV limit.
 - Peak detector: RBW: 1 MHz, VBW: 3 MHz.
 - Average detector: RBW: 1 MHz, VBW: 1/T MHz(refer to clause 7.1.).
 - For above 3GHz part, filter losses were only considered in the spurious frequency bands and the authorized band was not corrected for HPF losses.
 - Only the worst case emission was recorded, if it complies with the limit, the other emissions deemed to comply with the limit.

Test Mode	Channel	Polarization	Verdict
11B	HCH	Horizontal	PASS



PK Result:

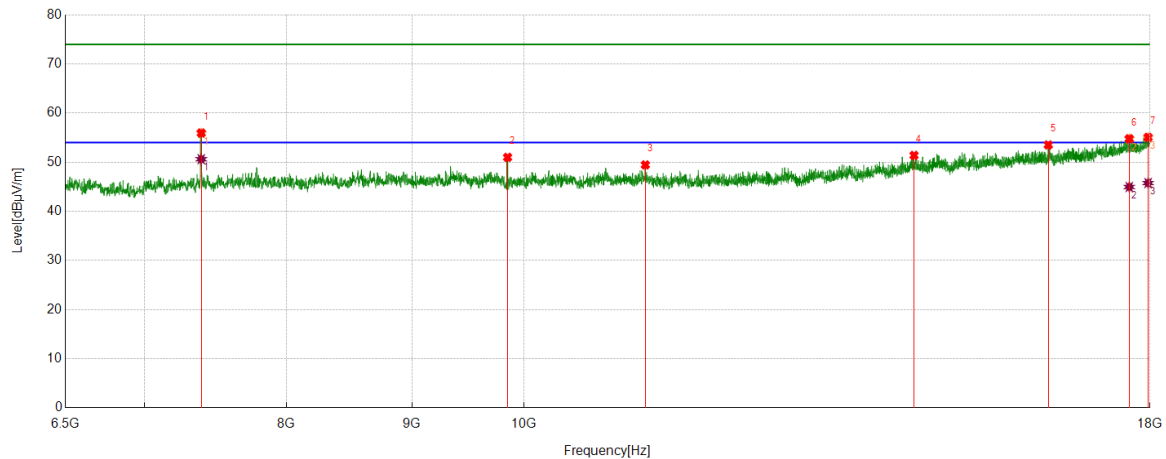
No.	Frequency	Reading Level	Correct Factor	Result	Limit	Margin	Remark
	[MHz]	[dBuV]	[dB/m]	[dBuV/m]	[dBuV/m]	[dB]	
1	7385.6107	51.47	4.16	55.63	74.00	-18.37	Horizontal
2	9848.356	45.07	6.51	51.58	74.00	-22.42	Horizontal
3	12883.2979	39.99	9.35	49.34	74.00	-24.66	Horizontal
4	15144.7681	38.64	13.25	51.89	74.00	-22.11	Horizontal
5	15984.373	38.33	14.55	52.88	74.00	-21.12	Horizontal
6	17570.1338	37.32	17.90	55.22	74.00	-18.78	Horizontal
7	17935.3044	36.06	19.42	55.48	74.00	-18.52	Horizontal

AV Result:

No.	Frequency	Reading Level	Correct Factor	Result	Limit	Margin	Remark
	[MHz]	[dBuV]	[dB/m]	[dBuV/m]	[dBuV/m]	[dB]	
1	7385.6107	46.89	4.16	51.05	54.00	-2.95	Horizontal
2	17570.1338	27.34	17.90	45.24	54.00	-8.76	Horizontal
3	17935.3044	26.09	19.42	45.51	54.00	-8.49	Horizontal

- Note: 1. Measurement = Reading Level + Correct Factor,
Correct Factor = Antenna Factor + Loss (Cable + Filter) – Amplifier Gain.
- If Peak Result complies with AV limit, AV Result is deemed to comply with AV limit.
 - Peak detector: RBW: 1 MHz, VBW: 3 MHz.
 - Average detector: RBW: 1 MHz, VBW: 1/T MHz(refer to clause 7.1.).
 - For above 3GHz part, filter losses were only considered in the spurious frequency bands and the authorized band was not corrected for HPF losses.
 - Only the worst case emission was recorded, if it complies with the limit, the other emissions deemed to comply with the limit.

Test Mode	Channel	Polarization	Verdict
11B	HCH	Vertical	PASS


PK Result:

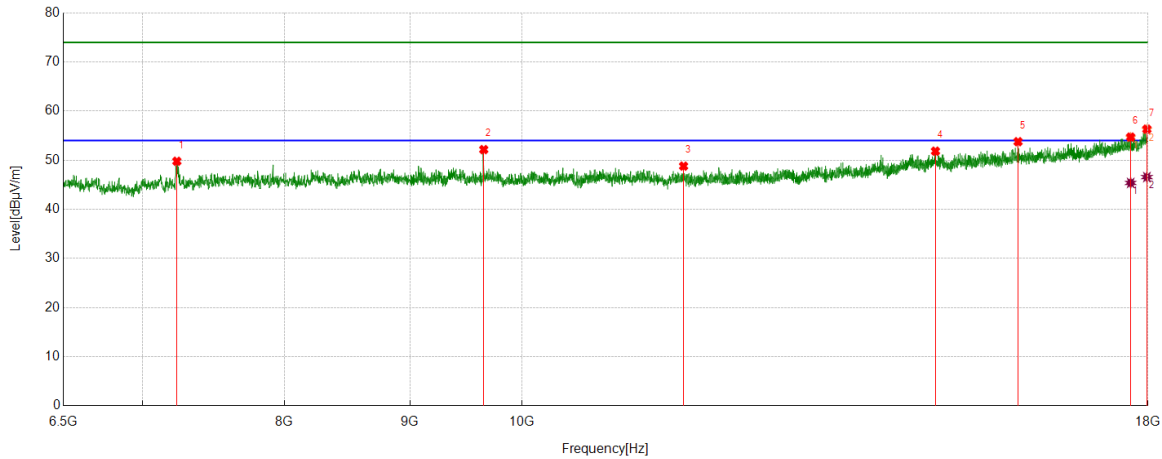
No.	Frequency	Reading Level	Correct Factor	Result	Limit	Margin	Remark
	[MHz]	[dBuV]	[dB/m]	[dBuV/m]	[dBuV/m]	[dB]	
1	7385.6107	51.80	4.16	55.96	74.00	-18.04	Vertical
2	9846.9184	44.52	6.48	51.00	74.00	-23.00	Vertical
3	11206.9634	42.10	7.36	49.46	74.00	-24.54	Vertical
4	14423.0529	38.50	12.90	51.40	74.00	-22.60	Vertical
5	16361.0451	38.51	15.02	53.53	74.00	-20.47	Vertical
6	17653.5192	36.75	18.04	54.79	74.00	-19.21	Vertical
7	17968.371	35.45	19.63	55.08	74.00	-18.92	Vertical

AV Result:

No.	Frequency	Reading Level	Correct Factor	Result	Limit	Margin	Remark
	[MHz]	[dBuV]	[dB/m]	[dBuV/m]	[dBuV/m]	[dB]	
1	7385.6107	46.46	4.16	50.62	54.00	-3.38	Vertical
2	17653.5192	26.92	18.04	44.96	54.00	-9.04	Vertical
3	17968.371	26.13	19.63	45.76	54.00	-8.24	Vertical

- Note: 1. Measurement = Reading Level + Correct Factor,
 Correct Factor = Antenna Factor + Loss (Cable + Filter) – Amplifier Gain.
- If Peak Result complies with AV limit, AV Result is deemed to comply with AV limit.
 - Peak detector: RBW: 1 MHz, VBW: 3 MHz.
 - Average detector: RBW: 1 MHz, VBW: 1/T MHz(refer to clause 7.1.).
 - For above 3GHz part, filter losses were only considered in the spurious frequency bands and the authorized band was not corrected for HPF losses.
 - Only the worst case emission was recorded, if it complies with the limit, the other emissions deemed to comply with the limit.

Test Mode	Channel	Polarization	Verdict
11G	LCH	Horizontal	PASS



PK Result:

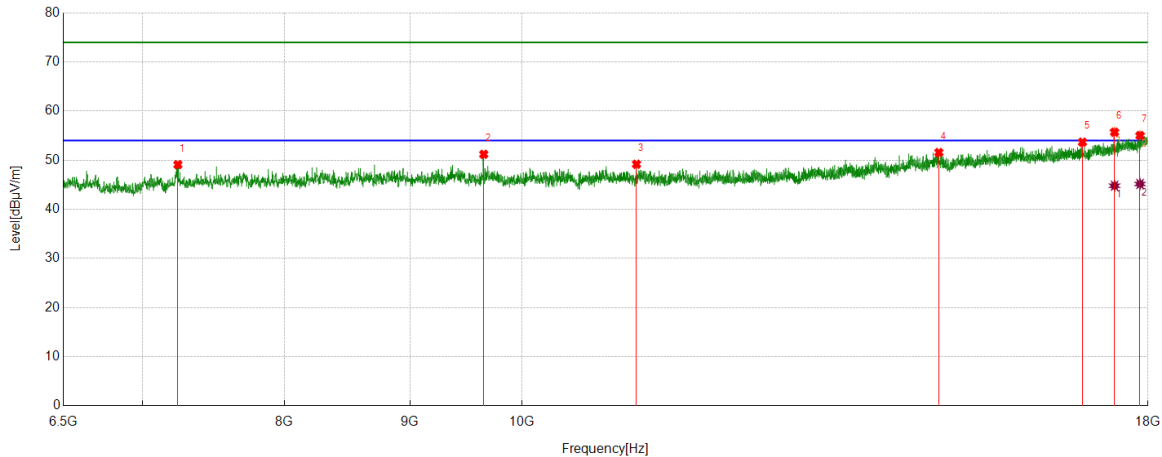
No.	Frequency	Reading Level	Correct Factor	Result	Limit	Margin	Remark
	[MHz]	[dBuV]	[dB/m]	[dBuV/m]	[dBuV/m]	[dB]	
1	7231.779	45.90	3.89	49.79	74.00	-24.21	Horizontal
2	9647.0809	45.78	6.39	52.17	74.00	-21.83	Horizontal
3	11638.2673	41.21	7.59	48.80	74.00	-25.20	Horizontal
4	14743.6555	38.96	12.89	51.85	74.00	-22.15	Horizontal
5	15932.6166	39.17	14.61	53.78	74.00	-20.22	Horizontal
6	17709.5887	36.36	18.36	54.72	74.00	-19.28	Horizontal
7	17981.3102	36.53	19.80	56.33	74.00	-17.67	Horizontal

AV Result:

No.	Frequency	Reading Level	Correct Factor	Result	Limit	Margin	Remark
	[MHz]	[dBuV]	[dB/m]	[dBuV/m]	[dBuV/m]	[dB]	
1	17709.5887	27.02	18.36	45.38	54.00	-8.62	Horizontal
2	17981.3102	26.77	19.80	46.57	54.00	-7.43	Horizontal

- Note: 1. Measurement = Reading Level + Correct Factor,
Correct Factor = Antenna Factor + Loss (Cable + Filter) – Amplifier Gain.
- If Peak Result complies with AV limit, AV Result is deemed to comply with AV limit.
 - Peak detector: RBW: 1 MHz, VBW: 3 MHz.
 - Average detector: RBW: 1 MHz, VBW: 1/T MHz(refer to clause 7.1.).
 - For above 3GHz part, filter losses were only considered in the spurious frequency bands and the authorized band was not corrected for HPF losses.
 - Only the worst case emission was recorded, if it complies with the limit, the other emissions deemed to comply with the limit.

Test Mode	Channel	Polarization	Verdict
11G	LCH	Vertical	PASS



PK Result:

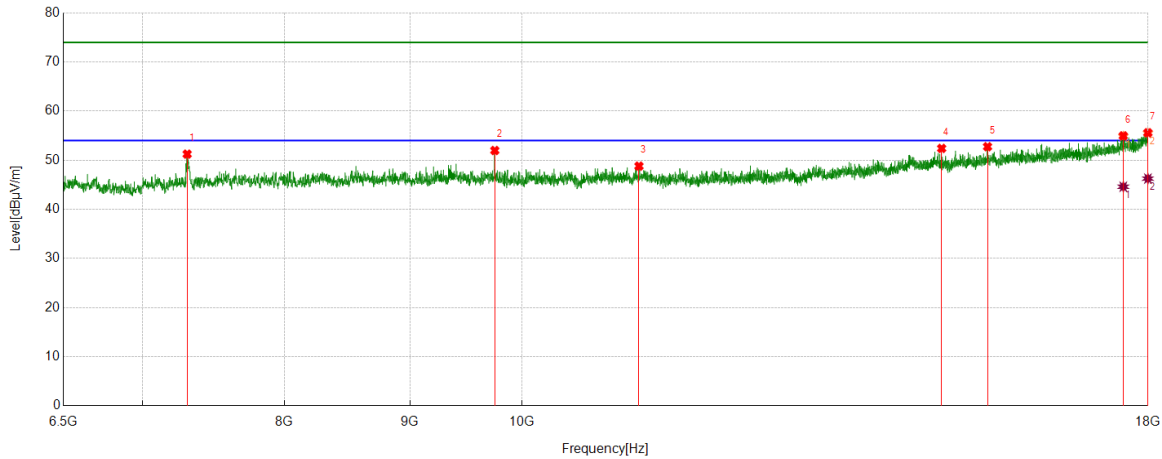
No.	Frequency	Reading Level	Correct Factor	Result	Limit	Margin	Remark
	[MHz]	[dBuV]	[dB/m]	[dBuV/m]	[dBuV/m]	[dB]	
1	7238.9674	45.34	3.76	49.10	74.00	-24.90	Vertical
2	9647.0809	44.82	6.39	51.21	74.00	-22.79	Vertical
3	11135.0794	41.93	7.25	49.18	74.00	-24.82	Vertical
4	14791.0989	38.71	12.87	51.58	74.00	-22.42	Vertical
5	16926.0533	37.60	16.08	53.68	74.00	-20.32	Vertical
6	17443.618	38.18	17.54	55.72	74.00	-18.28	Vertical
7	17866.2958	35.80	19.23	55.03	74.00	-18.97	Vertical

AV Result:

No.	Frequency	Reading Level	Correct Factor	Result	Limit	Margin	Remark
	[MHz]	[dBuV]	[dB/m]	[dBuV/m]	[dBuV/m]	[dB]	
1	17443.618	27.27	17.54	44.81	54.00	-9.19	Vertical
2	17866.2958	25.94	19.23	45.17	54.00	-8.83	Vertical

- Note: 1. Measurement = Reading Level + Correct Factor,
Correct Factor = Antenna Factor + Loss (Cable + Filter) – Amplifier Gain.
- If Peak Result complies with AV limit, AV Result is deemed to comply with AV limit.
 - Peak detector: RBW: 1 MHz, VBW: 3 MHz.
 - Average detector: RBW: 1 MHz, VBW: 1/T MHz(refer to clause 7.1.).
 - For above 3GHz part, filter losses were only considered in the spurious frequency bands and the authorized band was not corrected for HPF losses.
 - Only the worst case emission was recorded, if it complies with the limit, the other emissions deemed to comply with the limit.

Test Mode	Channel	Polarization	Verdict
11G	MCH	Horizontal	PASS



PK Result:

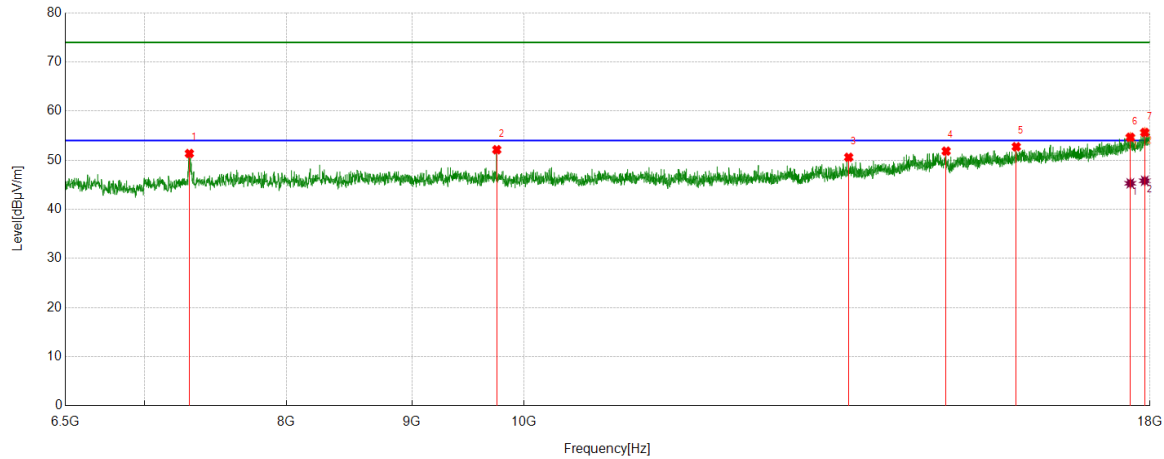
No.	Frequency	Reading Level	Correct Factor	Result	Limit	Margin	Remark
	[MHz]	[dBuV]	[dB/m]	[dBuV/m]	[dBuV/m]	[dB]	
1	7302.2253	47.53	3.72	51.25	74.00	-22.75	Horizontal
2	9747.7185	45.51	6.48	51.99	74.00	-22.01	Horizontal
3	11160.9576	41.58	7.22	48.80	74.00	-25.20	Horizontal
4	14829.9162	39.53	12.88	52.41	74.00	-21.59	Horizontal
5	15482.6228	38.80	13.96	52.76	74.00	-21.24	Horizontal
6	17587.3859	36.96	18.01	54.97	74.00	-19.03	Horizontal
7	17998.5623	35.85	19.75	55.60	74.00	-18.40	Horizontal

AV Result:

No.	Frequency	Reading Level	Correct Factor	Result	Limit	Margin	Remark
	[MHz]	[dBuV]	[dB/m]	[dBuV/m]	[dBuV/m]	[dB]	
1	17587.3859	26.59	18.01	44.60	54.00	-9.40	Horizontal
2	17998.5623	26.51	19.75	46.26	54.00	-7.74	Horizontal

- Note: 1. Measurement = Reading Level + Correct Factor,
Correct Factor = Antenna Factor + Loss (Cable + Filter) – Amplifier Gain.
2. If Peak Result complies with AV limit, AV Result is deemed to comply with AV limit.
3. Peak detector: RBW: 1 MHz, VBW: 3 MHz.
4. Average detector: RBW: 1 MHz, VBW: 1/T MHz(refer to clause 7.1.).
5. For above 3GHz part, filter losses were only considered in the spurious frequency bands and the authorized band was not corrected for HPF losses.
6. Only the worst case emission was recorded, if it complies with the limit, the other emissions deemed to comply with the limit.

Test Mode	Channel	Polarization	Verdict
11G	MCH	Vertical	PASS



PK Result:

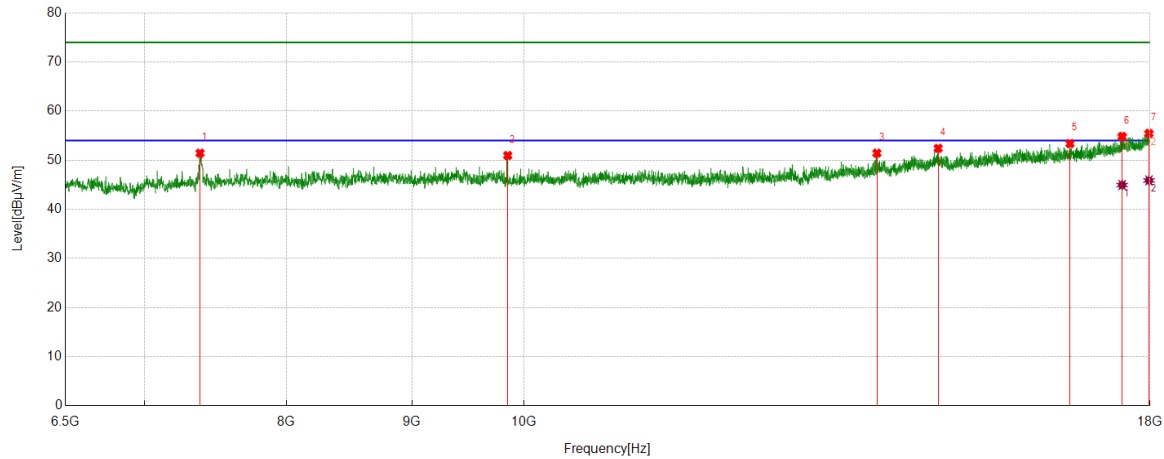
No.	Frequency	Reading Level	Correct Factor	Result	Limit	Margin	Remark
	[MHz]	[dBuV]	[dB/m]	[dBuV/m]	[dBuV/m]	[dB]	
1	7303.663	47.63	3.74	51.37	74.00	-22.63	Vertical
2	9747.7185	45.66	6.48	52.14	74.00	-21.86	Vertical
3	13564.7581	39.82	10.78	50.60	74.00	-23.40	Vertical
4	14864.4206	39.00	12.85	51.85	74.00	-22.15	Vertical
5	15876.5471	38.04	14.71	52.75	74.00	-21.25	Vertical
6	17670.7713	36.61	18.07	54.68	74.00	-19.32	Vertical
7	17912.3015	36.38	19.28	55.66	74.00	-18.34	Vertical

AV Result:

No.	Frequency	Reading Level	Correct Factor	Result	Limit	Margin	Remark
	[MHz]	[dBuV]	[dB/m]	[dBuV/m]	[dBuV/m]	[dB]	
1	17670.7713	27.23	18.07	45.30	54.00	-8.70	Vertical
2	17912.3015	26.54	19.28	45.82	54.00	-8.18	Vertical

- Note: 1. Measurement = Reading Level + Correct Factor,
Correct Factor = Antenna Factor + Loss (Cable + Filter) – Amplifier Gain.
- If Peak Result complies with AV limit, AV Result is deemed to comply with AV limit.
 - Peak detector: RBW: 1 MHz, VBW: 3 MHz.
 - Average detector: RBW: 1 MHz, VBW: 1/T MHz(refer to clause 7.1.).
 - For above 3GHz part, filter losses were only considered in the spurious frequency bands and the authorized band was not corrected for HPF losses.
 - Only the worst case emission was recorded, if it complies with the limit, the other emissions deemed to comply with the limit.

Test Mode	Channel	Polarization	Verdict
11G	HCH	Horizontal	PASS



PK Result:

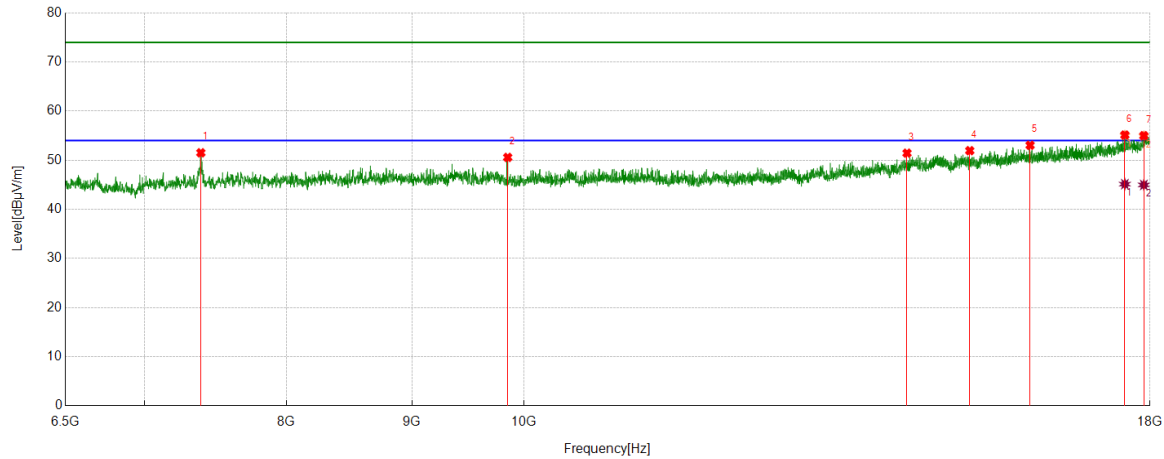
No.	Frequency	Reading Level	Correct Factor	Result	Limit	Margin	Remark
	[MHz]	[dBuV]	[dB/m]	[dBuV/m]	[dBuV/m]	[dB]	
1	7376.9846	47.22	4.23	51.45	74.00	-22.55	Horizontal
2	9848.356	44.46	6.51	50.97	74.00	-23.03	Horizontal
3	13928.4911	40.06	11.39	51.45	74.00	-22.55	Horizontal
4	14753.7192	39.53	12.90	52.43	74.00	-21.57	Horizontal
5	16697.4622	37.41	15.98	53.39	74.00	-20.61	Horizontal
6	17535.6295	37.19	17.65	54.84	74.00	-19.16	Horizontal
7	17982.7478	35.65	19.81	55.46	74.00	-18.54	Horizontal

AV Result:

No.	Frequency	Reading Level	Correct Factor	Result	Limit	Margin	Remark
	[MHz]	[dBuV]	[dB/m]	[dBuV/m]	[dBuV/m]	[dB]	
1	17535.6295	27.31	17.65	44.96	54.00	-9.04	Horizontal
2	17982.7478	26.07	19.81	45.88	54.00	-8.12	Horizontal

- Note: 1. Measurement = Reading Level + Correct Factor,
Correct Factor = Antenna Factor + Loss (Cable + Filter) – Amplifier Gain.
- If Peak Result complies with AV limit, AV Result is deemed to comply with AV limit.
 - Peak detector: RBW: 1 MHz, VBW: 3 MHz.
 - Average detector: RBW: 1 MHz, VBW: 1/T MHz(refer to clause 7.1.).
 - For above 3GHz part, filter losses were only considered in the spurious frequency bands and the authorized band was not corrected for HPF losses.
 - Only the worst case emission was recorded, if it complies with the limit, the other emissions deemed to comply with the limit.

Test Mode	Channel	Polarization	Verdict
11G	HCH	Vertical	PASS



PK Result:

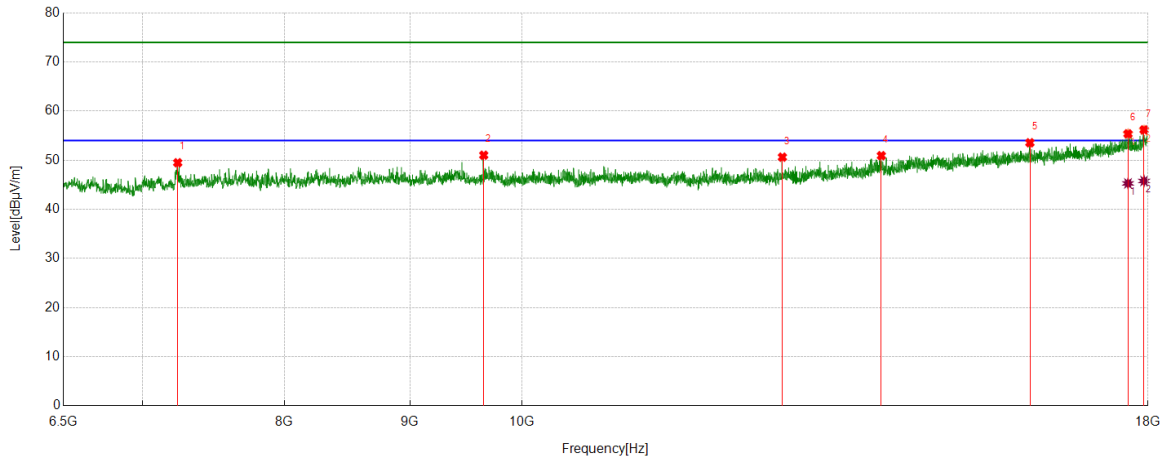
No.	Frequency	Reading Level	Correct Factor	Result	Limit	Margin	Remark
	[MHz]	[dBuV]	[dB/m]	[dBuV/m]	[dBuV/m]	[dB]	
1	7382.7353	47.35	4.17	51.52	74.00	-22.48	Vertical
2	9848.356	44.07	6.51	50.58	74.00	-23.42	Vertical
3	14328.166	39.07	12.38	51.45	74.00	-22.55	Vertical
4	15197.9622	38.54	13.41	51.95	74.00	-22.05	Vertical
5	16083.5729	38.39	14.66	53.05	74.00	-20.95	Vertical
6	17580.1975	37.19	17.95	55.14	74.00	-18.86	Vertical
7	17896.4871	35.77	19.23	55.00	74.00	-19.00	Vertical

AV Result:

No.	Frequency	Reading Level	Correct Factor	Result	Limit	Margin	Remark
	[MHz]	[dBuV]	[dB/m]	[dBuV/m]	[dBuV/m]	[dB]	
1	17580.1975	27.18	17.95	45.13	54.00	-8.87	Vertical
2	17896.4871	25.74	19.23	44.97	54.00	-9.03	Vertical

- Note: 1. Measurement = Reading Level + Correct Factor,
Correct Factor = Antenna Factor + Loss (Cable + Filter) – Amplifier Gain.
- If Peak Result complies with AV limit, AV Result is deemed to comply with AV limit.
 - Peak detector: RBW: 1 MHz, VBW: 3 MHz.
 - Average detector: RBW: 1 MHz, VBW: 1/T MHz(refer to clause 7.1.).
 - For above 3GHz part, filter losses were only considered in the spurious frequency bands and the authorized band was not corrected for HPF losses.
 - Only the worst case emission was recorded, if it complies with the limit, the other emissions deemed to comply with the limit.

Test Mode	Channel	Polarization	Verdict
11N HT20	LCH	Horizontal	PASS



PK Result:

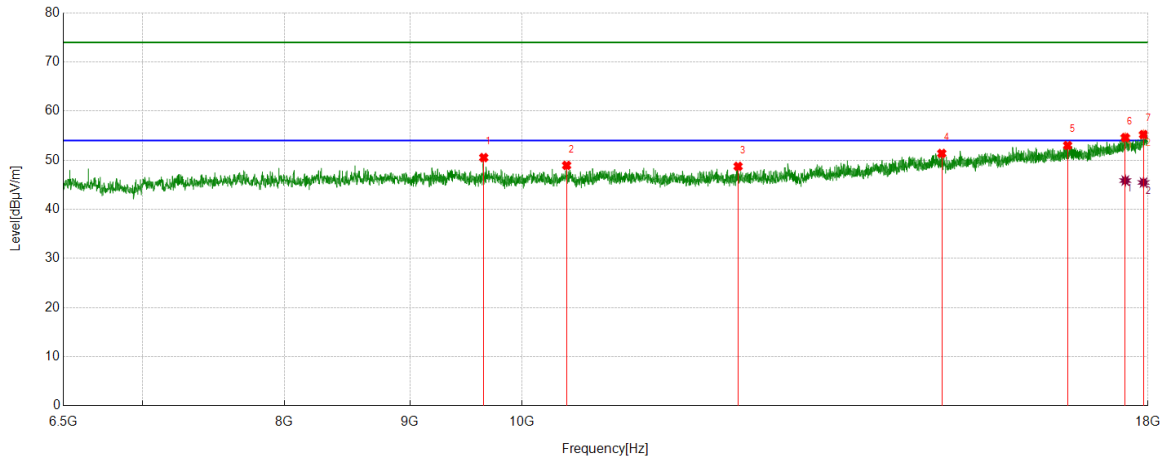
No.	Frequency	Reading Level	Correct Factor	Result	Limit	Margin	Remark
	[MHz]	[dBuV]	[dB/m]	[dBuV/m]	[dBuV/m]	[dB]	
1	7237.5297	45.71	3.78	49.49	74.00	-24.51	Horizontal
2	9647.0809	44.64	6.39	51.03	74.00	-22.97	Horizontal
3	12769.7212	41.68	8.95	50.63	74.00	-23.37	Horizontal
4	14013.3142	39.12	11.81	50.93	74.00	-23.07	Horizontal
5	16110.8889	38.68	14.88	53.56	74.00	-20.44	Horizontal
6	17665.0206	37.31	18.07	55.38	74.00	-18.62	Horizontal
7	17933.8667	36.80	19.40	56.20	74.00	-17.80	Horizontal

AV Result:

No.	Frequency	Reading Level	Correct Factor	Result	Limit	Margin	Remark
	[MHz]	[dBuV]	[dB/m]	[dBuV/m]	[dBuV/m]	[dB]	
1	17665.0206	27.21	18.07	45.28	54.00	-8.72	Horizontal
2	17933.8667	26.37	19.40	45.77	54.00	-8.23	Horizontal

- Note: 1. Measurement = Reading Level + Correct Factor,
Correct Factor = Antenna Factor + Loss (Cable + Filter) – Amplifier Gain.
- If Peak Result complies with AV limit, AV Result is deemed to comply with AV limit.
 - Peak detector: RBW: 1 MHz, VBW: 3 MHz.
 - Average detector: RBW: 1 MHz, VBW: 1/T MHz(refer to clause 7.1.).
 - For above 3GHz part, filter losses were only considered in the spurious frequency bands and the authorized band was not corrected for HPF losses.
 - Only the worst case emission was recorded, if it complies with the limit, the other emissions deemed to comply with the limit.

Test Mode	Channel	Polarization	Verdict
11N HT20	LCH	Vertical	PASS



PK Result:

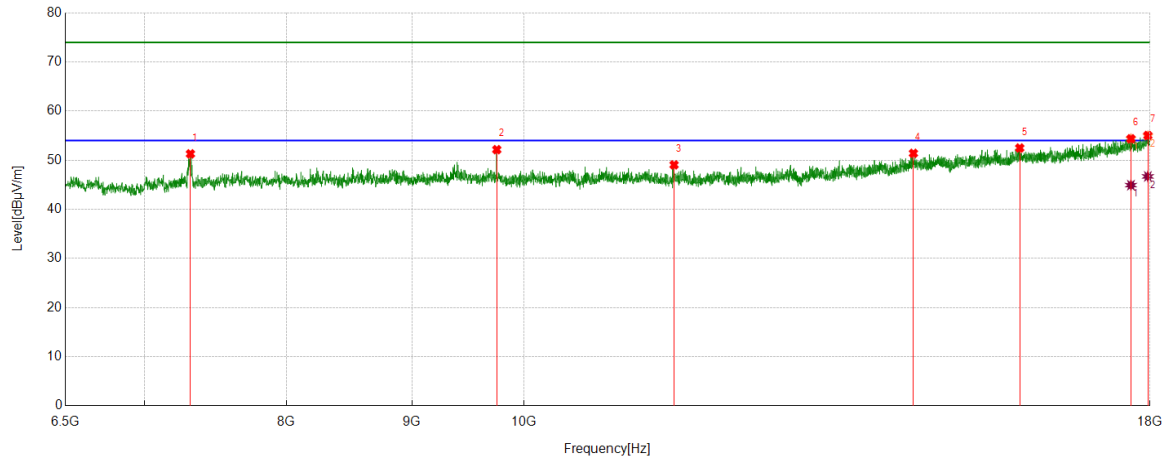
No.	Frequency	Reading Level	Correct Factor	Result	Limit	Margin	Remark
	[MHz]	[dBuV]	[dB/m]	[dBuV/m]	[dBuV/m]	[dB]	
1	9647.0809	44.15	6.39	50.54	74.00	-23.46	Vertical
2	10427.741	42.25	6.70	48.95	74.00	-25.05	Vertical
3	12249.2812	40.09	8.66	48.75	74.00	-25.25	Vertical
4	14831.3539	38.51	12.88	51.39	74.00	-22.61	Vertical
5	16691.7115	37.23	15.78	53.01	74.00	-20.99	Vertical
6	17620.4526	36.54	18.07	54.61	74.00	-19.39	Vertical
7	17925.2407	35.86	19.37	55.23	74.00	-18.77	Vertical

AV Result:

No.	Frequency	Reading Level	Correct Factor	Result	Limit	Margin	Remark
	[MHz]	[dBuV]	[dB/m]	[dBuV/m]	[dBuV/m]	[dB]	
1	17620.4526	27.79	18.07	45.86	54.00	-8.14	Vertical
2	17925.2407	26.10	19.37	45.47	54.00	-8.53	Vertical

- Note: 1. Measurement = Reading Level + Correct Factor,
Correct Factor = Antenna Factor + Loss (Cable + Filter) – Amplifier Gain.
- If Peak Result complies with AV limit, AV Result is deemed to comply with AV limit.
 - Peak detector: RBW: 1 MHz, VBW: 3 MHz.
 - Average detector: RBW: 1 MHz, VBW: 1/T MHz(refer to clause 7.1.).
 - For above 3GHz part, filter losses were only considered in the spurious frequency bands and the authorized band was not corrected for HPF losses.
 - Only the worst case emission was recorded, if it complies with the limit, the other emissions deemed to comply with the limit.

Test Mode	Channel	Polarization	Verdict
11N HT20	MCH	Horizontal	PASS



PK Result:

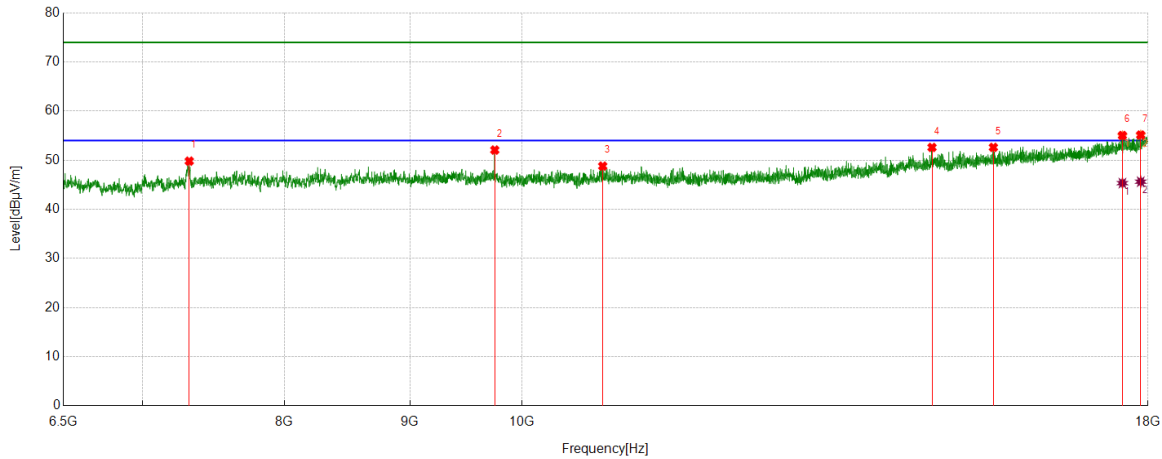
No.	Frequency	Reading Level	Correct Factor	Result	Limit	Margin	Remark
	[MHz]	[dBuV]	[dB/m]	[dBuV/m]	[dBuV/m]	[dB]	
1	7310.8514	47.45	3.85	51.30	74.00	-22.70	Horizontal
2	9747.7185	45.68	6.48	52.16	74.00	-21.84	Horizontal
3	11513.1891	41.47	7.59	49.06	74.00	-24.94	Horizontal
4	14414.4268	38.51	12.90	51.41	74.00	-22.59	Horizontal
5	15928.3035	37.88	14.61	52.49	74.00	-21.51	Horizontal
6	17680.8351	36.25	18.12	54.37	74.00	-19.63	Horizontal
7	17964.058	35.41	19.63	55.04	74.00	-18.96	Horizontal

AV Result:

No.	Frequency	Reading Level	Correct Factor	Result	Limit	Margin	Remark
	[MHz]	[dBuV]	[dB/m]	[dBuV/m]	[dBuV/m]	[dB]	
1	17680.8351	26.80	18.12	44.92	54.00	-9.08	Horizontal
2	17964.058	27.07	19.63	46.70	54.00	-7.30	Horizontal

- Note: 1. Measurement = Reading Level + Correct Factor,
Correct Factor = Antenna Factor + Loss (Cable + Filter) – Amplifier Gain.
2. If Peak Result complies with AV limit, AV Result is deemed to comply with AV limit.
3. Peak detector: RBW: 1 MHz, VBW: 3 MHz.
4. Average detector: RBW: 1 MHz, VBW: 1/T MHz(refer to clause 7.1.).
5. For above 3GHz part, filter losses were only considered in the spurious frequency bands and the authorized band was not corrected for HPF losses.
6. Only the worst case emission was recorded, if it complies with the limit, the other emissions deemed to comply with the limit.

Test Mode	Channel	Polarization	Verdict
11N HT20	MCH	Vertical	PASS



PK Result:

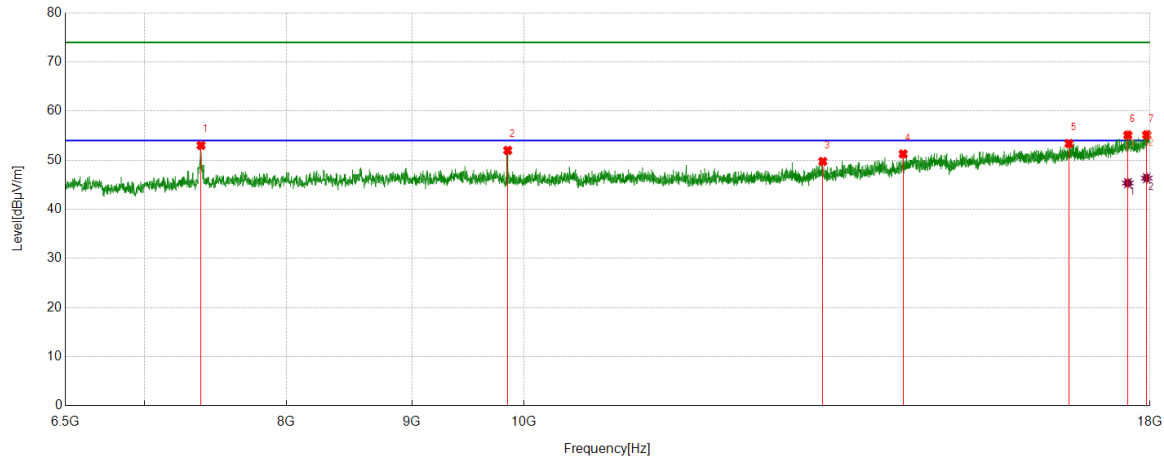
No.	Frequency	Reading Level	Correct Factor	Result	Limit	Margin	Remark
	[MHz]	[dBuV]	[dB/m]	[dBuV/m]	[dBuV/m]	[dB]	
1	7316.6021	46.00	3.82	49.82	74.00	-24.18	Vertical
2	9747.7185	45.60	6.48	52.08	74.00	-21.92	Vertical
3	10787.1609	41.88	6.92	48.80	74.00	-25.20	Vertical
4	14696.212	39.85	12.76	52.61	74.00	-21.39	Vertical
5	15567.4459	38.98	13.64	52.62	74.00	-21.38	Vertical
6	17573.0091	37.12	17.92	55.04	74.00	-18.96	Vertical
7	17877.7972	35.96	19.18	55.14	74.00	-18.86	Vertical

AV Result:

No.	Frequency	Reading Level	Correct Factor	Result	Limit	Margin	Remark
	[MHz]	[dBuV]	[dB/m]	[dBuV/m]	[dBuV/m]	[dB]	
1	17573.0091	27.42	17.92	45.34	54.00	-8.66	Vertical
2	17877.7972	26.45	19.18	45.63	54.00	-8.37	Vertical

- Note: 1. Measurement = Reading Level + Correct Factor,
Correct Factor = Antenna Factor + Loss (Cable + Filter) – Amplifier Gain.
2. If Peak Result complies with AV limit, AV Result is deemed to comply with AV limit.
3. Peak detector: RBW: 1 MHz, VBW: 3 MHz.
4. Average detector: RBW: 1 MHz, VBW: 1/T MHz(refer to clause 7.1.).
5. For above 3GHz part, filter losses were only considered in the spurious frequency bands and the authorized band was not corrected for HPF losses.
6. Only the worst case emission was recorded, if it complies with the limit, the other emissions deemed to comply with the limit.

Test Mode	Channel	Polarization	Verdict
11N HT20	HCH	Horizontal	PASS



PK Result:

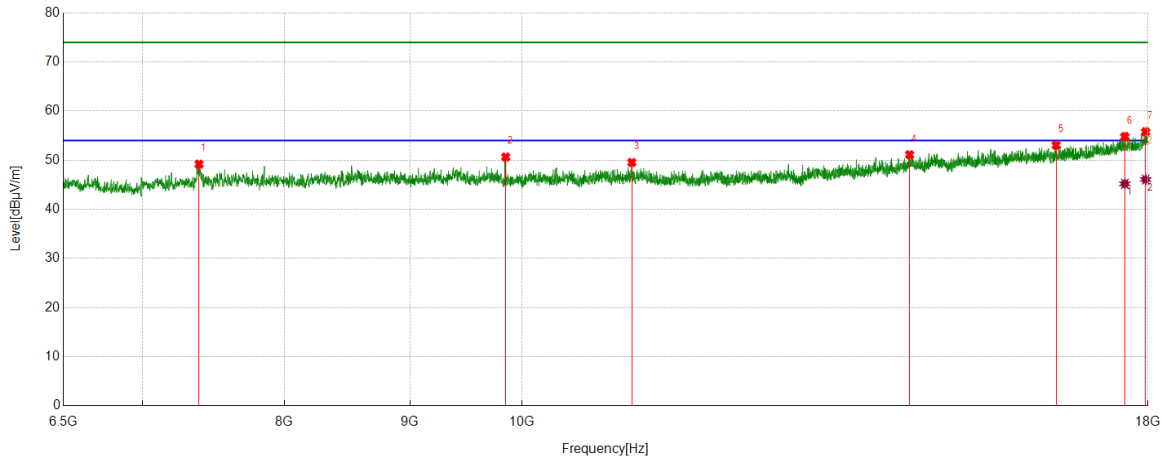
No.	Frequency	Reading Level	Correct Factor	Result	Limit	Margin	Remark
	[MHz]	[dBuV]	[dB/m]	[dBuV/m]	[dBuV/m]	[dB]	
1	7384.173	48.87	4.16	53.03	74.00	-20.97	Horizontal
2	9848.356	45.50	6.51	52.01	74.00	-21.99	Horizontal
3	13238.4048	39.52	10.23	49.75	74.00	-24.25	Horizontal
4	14276.4096	39.16	12.13	51.29	74.00	-22.71	Horizontal
5	16681.6477	37.73	15.66	53.39	74.00	-20.61	Horizontal
6	17629.0786	37.08	18.05	55.13	74.00	-18.87	Horizontal
7	17945.3682	35.70	19.48	55.18	74.00	-18.82	Horizontal

AV Result:

No.	Frequency	Reading Level	Correct Factor	Result	Limit	Margin	Remark
	[MHz]	[dBuV]	[dB/m]	[dBuV/m]	[dBuV/m]	[dB]	
1	17629.0786	27.30	18.05	45.35	54.00	-8.65	Horizontal
2	17945.3682	26.88	19.48	46.36	54.00	-7.64	Horizontal

- Note: 1. Measurement = Reading Level + Correct Factor,
Correct Factor = Antenna Factor + Loss (Cable + Filter) – Amplifier Gain.
- If Peak Result complies with AV limit, AV Result is deemed to comply with AV limit.
 - Peak detector: RBW: 1 MHz, VBW: 3 MHz.
 - Average detector: RBW: 1 MHz, VBW: 1/T MHz(refer to clause 7.1.).
 - For above 3GHz part, filter losses were only considered in the spurious frequency bands and the authorized band was not corrected for HPF losses.
 - Only the worst case emission was recorded, if it complies with the limit, the other emissions deemed to comply with the limit.

Test Mode	Channel	Polarization	Verdict
11N HT20	HCH	Vertical	PASS



PK Result:

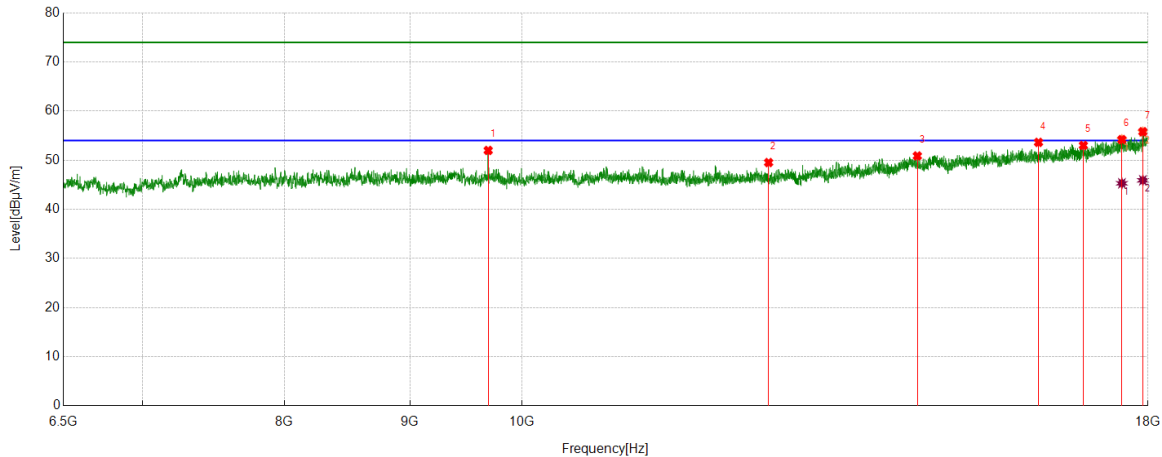
No.	Frequency	Reading Level	Correct Factor	Result	Limit	Margin	Remark
	[MHz]	[dBuV]	[dB/m]	[dBuV/m]	[dBuV/m]	[dB]	
1	7384.173	45.04	4.16	49.20	74.00	-24.80	Vertical
2	9848.356	44.14	6.51	50.65	74.00	-23.35	Vertical
3	11086.1983	42.24	7.31	49.55	74.00	-24.45	Vertical
4	14389.9862	38.34	12.79	51.13	74.00	-22.87	Vertical
5	16512.0015	37.12	15.94	53.06	74.00	-20.94	Vertical
6	17613.2642	36.76	18.06	54.82	74.00	-19.18	Vertical
7	17961.1826	36.17	19.63	55.80	74.00	-18.20	Vertical

AV Result:

No.	Frequency	Reading Level	Correct Factor	Result	Limit	Margin	Remark
	[MHz]	[dBuV]	[dB/m]	[dBuV/m]	[dBuV/m]	[dB]	
1	17613.2642	27.13	18.06	45.19	54.00	-8.81	Vertical
2	17961.1826	26.44	19.63	46.07	54.00	-7.93	Vertical

- Note: 1. Measurement = Reading Level + Correct Factor,
Correct Factor = Antenna Factor + Loss (Cable + Filter) – Amplifier Gain.
- If Peak Result complies with AV limit, AV Result is deemed to comply with AV limit.
 - Peak detector: RBW: 1 MHz, VBW: 3 MHz.
 - Average detector: RBW: 1 MHz, VBW: 1/T MHz(refer to clause 7.1.).
 - For above 3GHz part, filter losses were only considered in the spurious frequency bands and the authorized band was not corrected for HPF losses.
 - Only the worst case emission was recorded, if it complies with the limit, the other emissions deemed to comply with the limit.

Test Mode	Channel	Polarization	Verdict
11N HT40	LCH	Horizontal	PASS



PK Result:

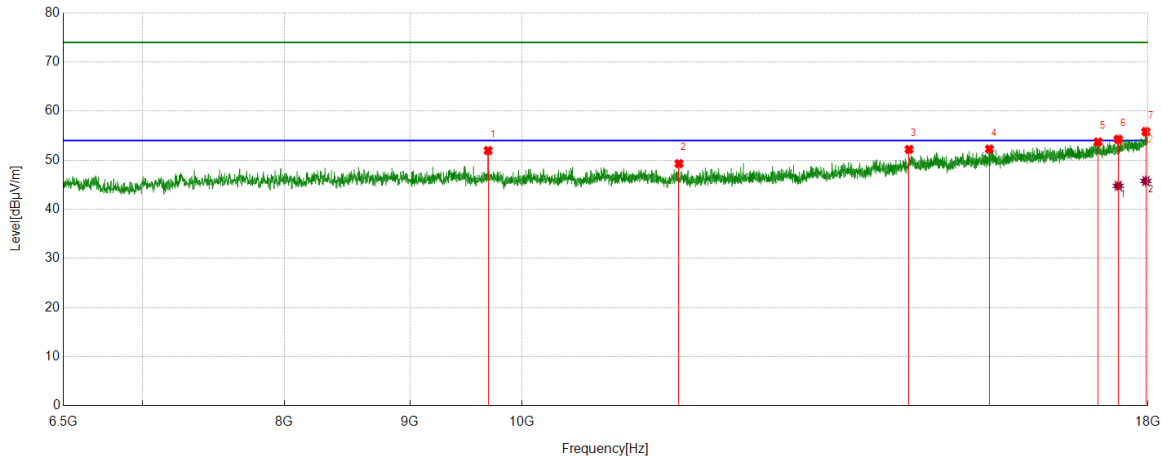
No.	Frequency	Reading Level	Correct Factor	Result	Limit	Margin	Remark
	[MHz]	[dBuV]	[dB/m]	[dBuV/m]	[dBuV/m]	[dB]	
1	9687.3359	45.49	6.51	52.00	74.00	-22.00	Horizontal
2	12605.8257	40.63	8.90	49.53	74.00	-24.47	Horizontal
3	14494.9369	38.06	12.82	50.88	74.00	-23.12	Horizontal
4	16241.7177	38.43	15.21	53.64	74.00	-20.36	Horizontal
5	16940.4301	36.96	16.06	53.02	74.00	-19.98	Horizontal
6	17564.383	36.38	17.83	54.21	74.00	-19.79	Horizontal
7	17913.7392	36.52	19.29	55.81	74.00	-18.19	Horizontal

AV Result:

No.	Frequency	Reading Level	Correct Factor	Result	Limit	Margin	Remark
	[MHz]	[dBuV]	[dB/m]	[dBuV/m]	[dBuV/m]	[dB]	
1	17564.383	27.47	17.83	45.30	54.00	-8.70	Horizontal
2	17913.7392	26.62	19.29	45.91	54.00	-8.09	Horizontal

- Note: 1. Measurement = Reading Level + Correct Factor,
Correct Factor = Antenna Factor + Loss (Cable + Filter) – Amplifier Gain.
- If Peak Result complies with AV limit, AV Result is deemed to comply with AV limit.
 - Peak detector: RBW: 1 MHz, VBW: 3 MHz.
 - Average detector: RBW: 1 MHz, VBW: 1/T MHz(refer to clause 7.1.).
 - For above 3GHz part, filter losses were only considered in the spurious frequency bands and the authorized band was not corrected for HPF losses.
 - Only the worst case emission was recorded, if it complies with the limit, the other emissions deemed to comply with the limit.

Test Mode	Channel	Polarization	Verdict
11N HT40	LCH	Vertical	PASS



PK Result:

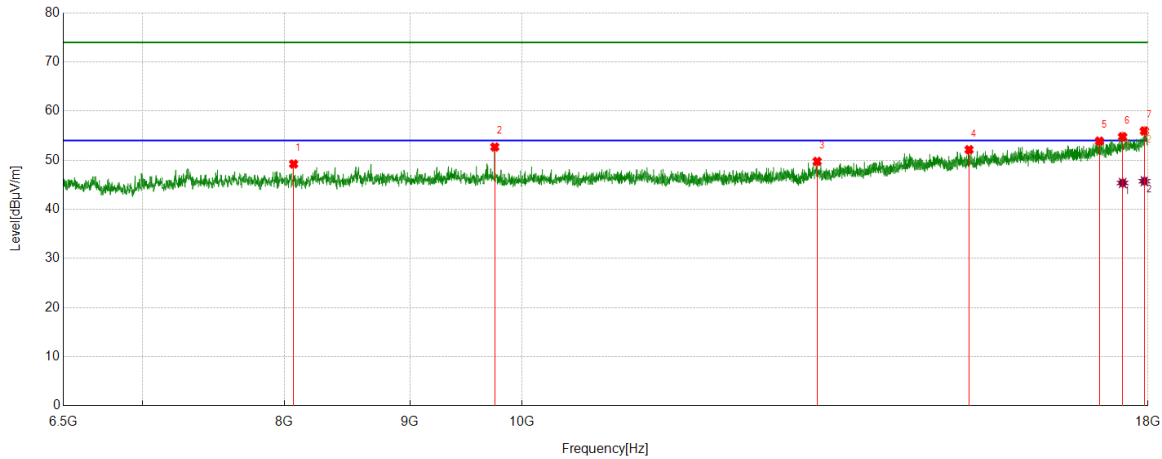
No.	Frequency	Reading Level	Correct Factor	Result	Limit	Margin	Remark
	[MHz]	[dBuV]	[dB/m]	[dBuV/m]	[dBuV/m]	[dB]	
1	9687.3359	45.46	6.51	51.97	74.00	-22.03	Vertical
2	11587.9485	41.59	7.72	49.31	74.00	-24.69	Vertical
3	14382.7978	39.47	12.73	52.20	74.00	-21.80	Vertical
4	15509.9387	38.44	13.84	52.28	74.00	-21.72	Vertical
5	17176.2095	37.20	16.53	53.73	74.00	-20.27	Vertical
6	17504.0005	36.64	17.62	54.26	74.00	-19.74	Vertical
7	17964.058	36.21	19.63	55.84	74.00	-18.16	Vertical

AV Result:

No.	Frequency	Reading Level	Correct Factor	Result	Limit	Margin	Remark
	[MHz]	[dBuV]	[dB/m]	[dBuV/m]	[dBuV/m]	[dB]	
1	17504.0005	27.16	17.62	44.78	54.00	-9.22	Vertical
2	17964.058	26.14	19.63	45.77	54.00	-8.23	Vertical

- Note: 1. Measurement = Reading Level + Correct Factor,
Correct Factor = Antenna Factor + Loss (Cable + Filter) – Amplifier Gain.
- If Peak Result complies with AV limit, AV Result is deemed to comply with AV limit.
 - Peak detector: RBW: 1 MHz, VBW: 3 MHz.
 - Average detector: RBW: 1 MHz, VBW: 1/T MHz(refer to clause 7.1.).
 - For above 3GHz part, filter losses were only considered in the spurious frequency bands and the authorized band was not corrected for HPF losses.
 - Only the worst case emission was recorded, if it complies with the limit, the other emissions deemed to comply with the limit.

Test Mode	Channel	Polarization	Verdict
11N HT40	MCH	Horizontal	PASS



PK Result:

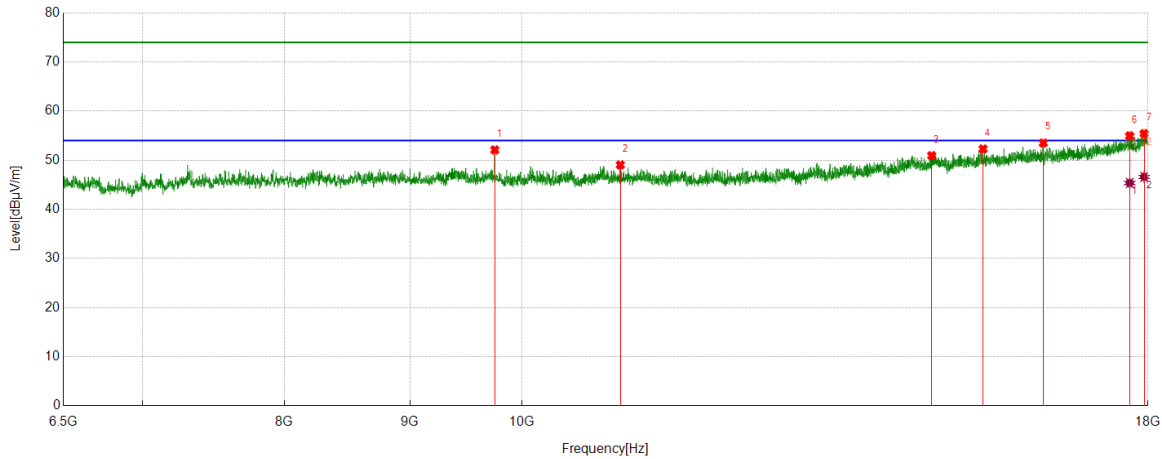
No.	Frequency	Reading Level	Correct Factor	Result	Limit	Margin	Remark
	[MHz]	[dBuV]	[dB/m]	[dBuV/m]	[dBuV/m]	[dB]	
1	8069.9462	43.53	5.70	49.23	74.00	-24.77	Horizontal
2	9747.7185	46.22	6.48	52.70	74.00	-21.30	Horizontal
3	13193.8367	39.75	10.01	49.76	74.00	-24.24	Horizontal
4	15216.6521	38.73	13.42	52.15	74.00	-21.85	Horizontal
5	17197.7747	37.30	16.60	53.90	74.00	-20.10	Horizontal
6	17575.8845	36.87	17.93	54.80	74.00	-19.20	Horizontal
7	17939.6175	36.52	19.45	55.97	74.00	-18.03	Horizontal

AV Result:

No.	Frequency	Reading Level	Correct Factor	Result	Limit	Margin	Remark
	[MHz]	[dBuV]	[dB/m]	[dBuV/m]	[dBuV/m]	[dB]	
1	17575.8845	27.44	17.93	45.37	54.00	-8.63	Horizontal
2	17939.6175	26.28	19.45	45.73	54.00	-8.27	Horizontal

- Note: 1. Measurement = Reading Level + Correct Factor,
Correct Factor = Antenna Factor + Loss (Cable + Filter) – Amplifier Gain.
- If Peak Result complies with AV limit, AV Result is deemed to comply with AV limit.
 - Peak detector: RBW: 1 MHz, VBW: 3 MHz.
 - Average detector: RBW: 1 MHz, VBW: 1/T MHz(refer to clause 7.1.).
 - For above 3GHz part, filter losses were only considered in the spurious frequency bands and the authorized band was not corrected for HPF losses.
 - Only the worst case emission was recorded, if it complies with the limit, the other emissions deemed to comply with the limit.

Test Mode	Channel	Polarization	Verdict
11N HT40	MCH	Vertical	PASS



PK Result:

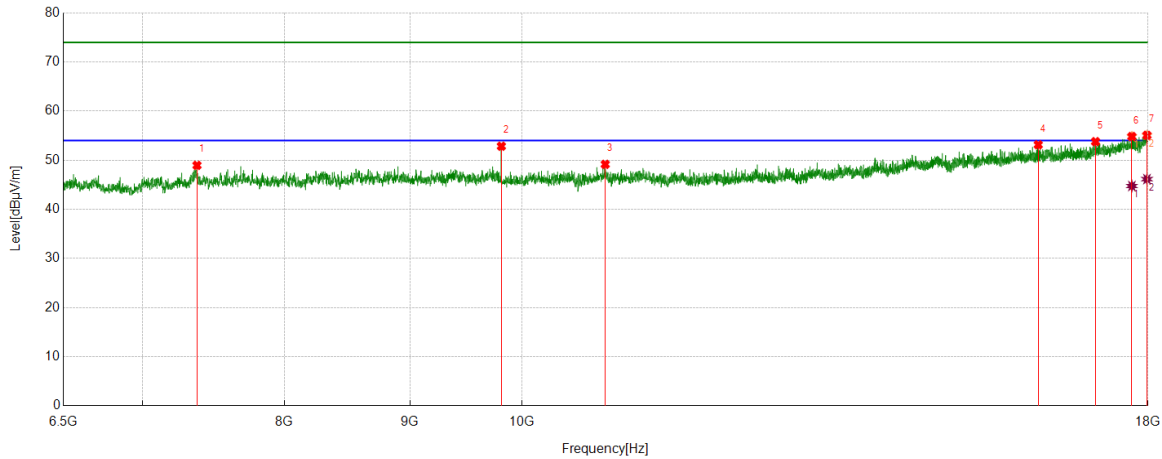
No.	Frequency	Reading Level	Correct Factor	Result	Limit	Margin	Remark
	[MHz]	[dBuV]	[dB/m]	[dBuV/m]	[dBuV/m]	[dB]	
1	9747.7185	45.62	6.48	52.10	74.00	-21.90	Vertical
2	10966.8709	41.75	7.30	49.05	74.00	-24.95	Vertical
3	14691.899	38.11	12.83	50.94	74.00	-23.06	Vertical
4	15417.9272	38.59	13.71	52.30	74.00	-21.70	Vertical
5	16315.0394	38.52	14.99	53.51	74.00	-20.49	Vertical
6	17693.7742	36.75	18.21	54.96	74.00	-19.04	Vertical
7	17935.3044	36.00	19.42	55.42	74.00	-18.58	Vertical

AV Result:

No.	Frequency	Reading Level	Correct Factor	Result	Limit	Margin	Remark
	[MHz]	[dBuV]	[dB/m]	[dBuV/m]	[dBuV/m]	[dB]	
1	17693.7742	27.15	18.21	45.36	54.00	-8.64	Vertical
2	17935.3044	27.18	19.42	46.60	54.00	-7.40	Vertical

- Note: 1. Measurement = Reading Level + Correct Factor,
Correct Factor = Antenna Factor + Loss (Cable + Filter) – Amplifier Gain.
- If Peak Result complies with AV limit, AV Result is deemed to comply with AV limit.
 - Peak detector: RBW: 1 MHz, VBW: 3 MHz.
 - Average detector: RBW: 1 MHz, VBW: 1/T MHz(refer to clause 7.1.).
 - For above 3GHz part, filter losses were only considered in the spurious frequency bands and the authorized band was not corrected for HPF losses.
 - Only the worst case emission was recorded, if it complies with the limit, the other emissions deemed to comply with the limit.

Test Mode	Channel	Polarization	Verdict
11N HT40	HCH	Horizontal	PASS



PK Result:

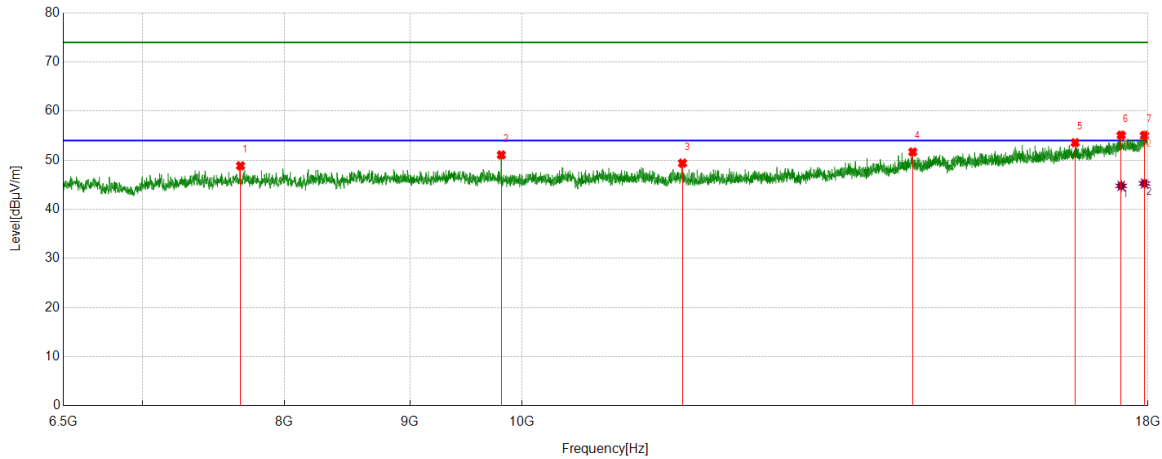
No.	Frequency	Reading Level	Correct Factor	Result	Limit	Margin	Remark
	[MHz]	[dBuV]	[dB/m]	[dBuV/m]	[dBuV/m]	[dB]	
1	7369.7962	44.63	4.33	48.96	74.00	-25.04	Horizontal
2	9808.101	46.49	6.37	52.86	74.00	-21.14	Horizontal
3	10813.0391	42.28	6.89	49.17	74.00	-24.83	Horizontal
4	16237.4047	37.94	15.21	53.15	74.00	-20.85	Horizontal
5	17134.5168	37.27	16.52	53.79	74.00	-20.21	Horizontal
6	17729.7162	36.31	18.53	54.84	74.00	-19.16	Horizontal
7	17982.7478	35.27	19.81	55.08	74.00	-18.92	Horizontal

AV Result:

No.	Frequency	Reading Level	Correct Factor	Result	Limit	Margin	Remark
	[MHz]	[dBuV]	[dB/m]	[dBuV/m]	[dBuV/m]	[dB]	
1	17729.7162	26.22	18.53	44.75	54.00	-9.25	Horizontal
2	17982.7478	26.34	19.81	46.15	54.00	-7.85	Horizontal

- Note: 1. Measurement = Reading Level + Correct Factor,
Correct Factor = Antenna Factor + Loss (Cable + Filter) – Amplifier Gain.
- If Peak Result complies with AV limit, AV Result is deemed to comply with AV limit.
 - Peak detector: RBW: 1 MHz, VBW: 3 MHz.
 - Average detector: RBW: 1 MHz, VBW: 1/T MHz(refer to clause 7.1.).
 - For above 3GHz part, filter losses were only considered in the spurious frequency bands and the authorized band was not corrected for HPF losses.
 - Only the worst case emission was recorded, if it complies with the limit, the other emissions deemed to comply with the limit.

Test Mode	Channel	Polarization	Verdict
11N HT40	HCH	Vertical	PASS



PK Result:

No.	Frequency	Reading Level	Correct Factor	Result	Limit	Margin	Remark
	[MHz]	[dBuV]	[dB/m]	[dBuV/m]	[dBuV/m]	[dB]	
1	7677.4597	43.55	5.31	48.86	74.00	-25.14	Vertical
2	9808.101	44.71	6.37	51.08	74.00	-22.92	Vertical
3	11626.7658	41.82	7.58	49.40	74.00	-24.60	Vertical
4	14433.1166	38.81	12.87	51.68	74.00	-22.32	Vertical
5	16811.0389	37.24	16.33	53.57	74.00	-20.43	Vertical
6	17552.8816	37.35	17.75	55.10	74.00	-18.90	Vertical
7	17941.0551	35.62	19.45	55.07	74.00	-18.93	Vertical

AV Result:

No.	Frequency	Reading Level	Correct Factor	Result	Limit	Margin	Remark
	[MHz]	[dBuV]	[dB/m]	[dBuV/m]	[dBuV/m]	[dB]	
1	17552.8816	27.03	17.75	44.78	54.00	-9.22	Vertical
2	17941.0551	25.82	19.45	45.27	54.00	-8.73	Vertical

- Note: 1. Measurement = Reading Level + Correct Factor,
Correct Factor = Antenna Factor + Loss (Cable + Filter) – Amplifier Gain.
- If Peak Result complies with AV limit, AV Result is deemed to comply with AV limit.
 - Peak detector: RBW: 1 MHz, VBW: 3 MHz.
 - Average detector: RBW: 1 MHz, VBW: 1/T MHz(refer to clause 7.1.).
 - For above 3GHz part, filter losses were only considered in the spurious frequency bands and the authorized band was not corrected for HPF losses.
 - Only the worst case emission was recorded, if it complies with the limit, the other emissions deemed to comply with the limit.