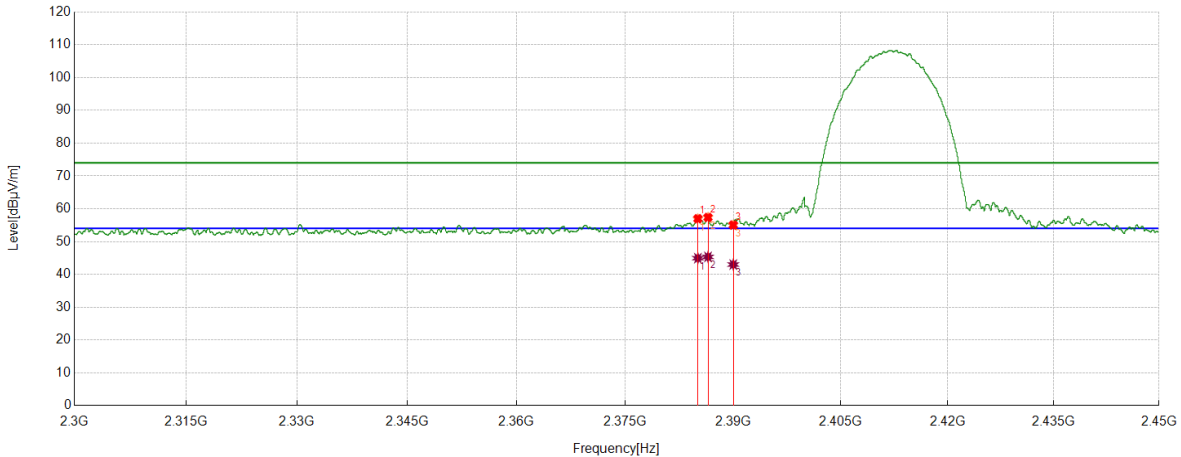


TEST GRAPHS

Test Mode	Channel	Polarization	Verdict
11B	LCH	Horizontal	PASS



PK Result:

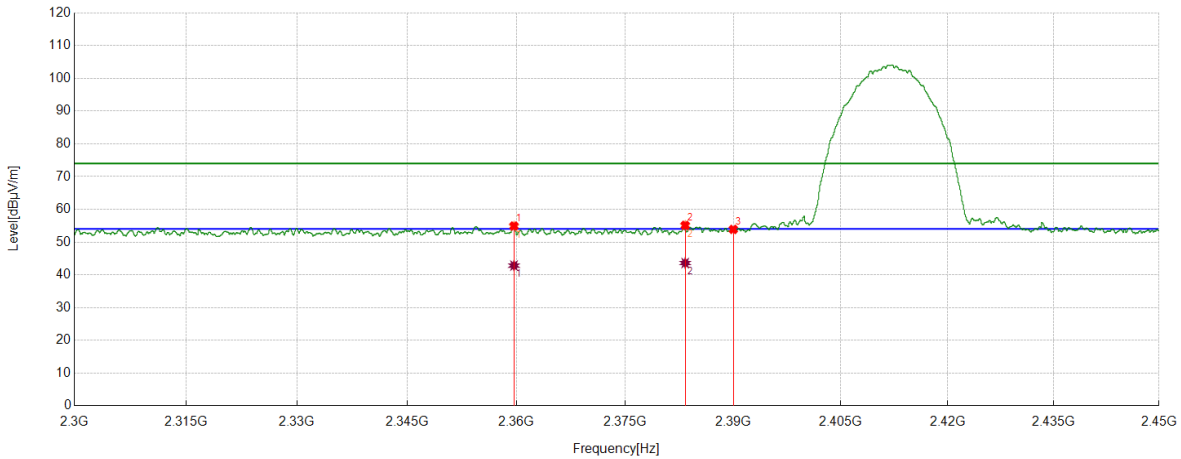
No.	Frequency	Reading Level	Correct Factor	Result	Limit	Margin	Remark
	[MHz]	[dBuV]	[dB/m]	[dBuV/m]	[dBuV/m]	[dB]	
1	2385.0794	43.43	13.54	56.97	74.00	-17.03	Horizontal
2	2386.4858	43.84	13.53	57.37	74.00	-16.63	Horizontal
3	2390.0000	41.57	13.48	55.05	74.00	-18.95	Horizontal

AV Result:

No.	Frequency	Reading Level	Correct Factor	Result	Limit	Margin	Remark
	[MHz]	[dBuV]	[dB/m]	[dBuV/m]	[dBuV/m]	[dB]	
1	2385.0794	31.39	13.54	44.93	54.00	-9.07	Horizontal
2	2386.4858	31.79	13.53	45.32	54.00	-8.68	Horizontal
3	2390.0000	29.51	13.48	42.99	54.00	-11.01	Horizontal

- Note: 1. Peak detector: RBW: 1 MHz, VBW: 3 MHz.
 2. Average detector: RBW: 1 MHz, VBW: 1/T MHz(refer to clause 7.1.).
 3. Measurement = Reading Level + Correct Factor,
 Correct Factor = Antenna Factor + Loss (Cable + Attenuator) – Amplifier Gain.
 4. Only the worst case emission was recorded, if it complies with the limit, the other emissions deemed to comply with the limit.

Test Mode	Channel	Polarization	Verdict
11B	LCH	Vertical	PASS



PK Result:

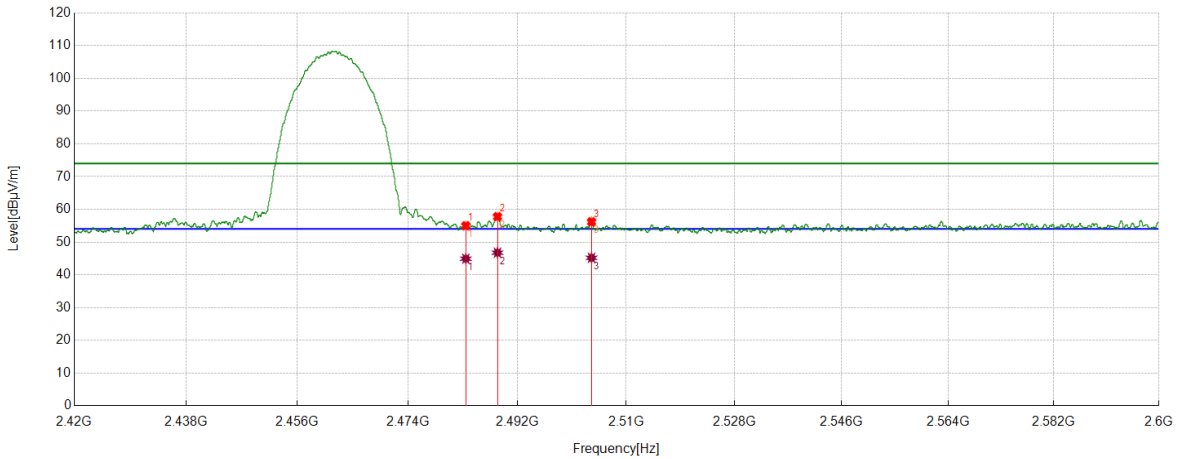
No.	Frequency	Reading Level	Correct Factor	Result	Limit	Margin	Remark
	[MHz]	[dBuV]	[dB/m]	[dBuV/m]	[dBuV/m]	[dB]	
1	2359.67	41.44	13.46	54.90	74.00	-19.10	Vertical
2	2383.3167	41.55	13.56	55.11	74.00	-18.89	Vertical
3	2390.0000	40.39	13.48	53.87	74.00	-20.13	Vertical

AV Result:

No.	Frequency	Reading Level	Correct Factor	Result	Limit	Margin	Remark
	[MHz]	[dBuV]	[dB/m]	[dBuV/m]	[dBuV/m]	[dB]	
1	2359.67	29.35	13.46	42.81	54.00	-11.19	Vertical
2	2383.3167	30.03	13.56	43.59	54.00	-10.41	Vertical

- Note: 1. Peak detector: RBW: 1 MHz, VBW: 3 MHz.
 2. Average detector: RBW: 1 MHz, VBW: 1/T MHz(refer to clause 7.1.).
 3. Measurement = Reading Level + Correct Factor,
 Correct Factor = Antenna Factor + Loss (Cable + Attenuator) – Amplifier Gain.
 4. Only the worst case emission was recorded, if it complies with the limit, the other emissions deemed to comply with the limit.

Test Mode	Channel	Polarization	Verdict
11B	HCH	Horizontal	PASS



PK Result:

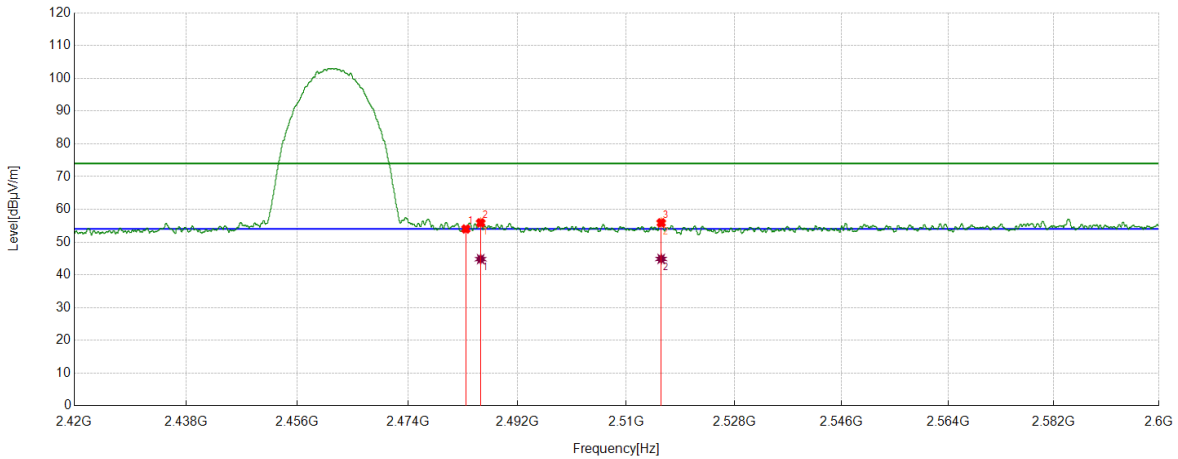
No.	Frequency	Reading Level	Correct Factor	Result	Limit	Margin	Remark
	[MHz]	[dBuV]	[dB/m]	[dBuV/m]	[dBuV/m]	[dB]	
1	2483.5000	40.74	14.25	54.99	74.00	-19.01	Horizontal
2	2488.7011	43.42	14.34	57.76	74.00	-16.24	Horizontal
3	2504.228	41.83	14.36	56.19	74.00	-17.81	Horizontal

AV Result:

No.	Frequency	Reading Level	Correct Factor	Result	Limit	Margin	Remark
	[MHz]	[dBuV]	[dB/m]	[dBuV/m]	[dBuV/m]	[dB]	
1	2483.5000	30.66	14.25	44.91	54.00	-9.09	Horizontal
2	2488.7011	32.41	14.34	46.75	54.00	-7.25	Horizontal
3	2504.228	30.82	14.36	45.18	54.00	-8.82	Horizontal

- Note: 1. Peak detector: RBW: 1 MHz, VBW: 3 MHz.
 2. Average detector: RBW: 1 MHz, VBW: 1/T MHz(refer to clause 7.1.).
 3. Measurement = Reading Level + Correct Factor,
 Correct Factor = Antenna Factor + Loss (Cable + Attenuator) – Amplifier Gain.
 4. Only the worst case emission was recorded, if it complies with the limit, the other emissions deemed to comply with the limit.

Test Mode	Channel	Polarization	Verdict
11B	HCH	Vertical	PASS



PK Result:

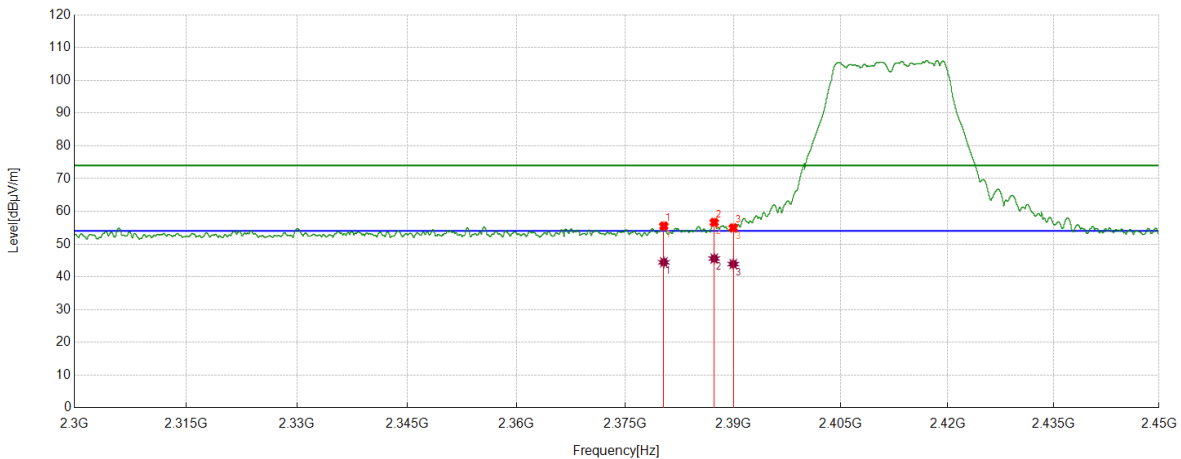
No.	Frequency	Reading Level	Correct Factor	Result	Limit	Margin	Remark
	[MHz]	[dBuV]	[dB/m]	[dBuV/m]	[dBuV/m]	[dB]	
1	2483.5000	39.75	14.25	54.00	74.00	-20.00	Vertical
2	2485.9332	41.57	14.30	55.87	74.00	-18.13	Vertical
3	2515.7945	41.37	14.51	55.88	74.00	-18.12	Vertical

AV Result:

No.	Frequency	Reading Level	Correct Factor	Result	Limit	Margin	Remark
	[MHz]	[dBuV]	[dB/m]	[dBuV/m]	[dBuV/m]	[dB]	
1	2485.9332	30.49	14.30	44.79	54.00	-9.21	Vertical
2	2515.7945	30.34	14.51	44.85	54.00	-9.15	Vertical

- Note: 1. Peak detector: RBW: 1 MHz, VBW: 3 MHz.
 2. Average detector: RBW: 1 MHz, VBW: 1/T MHz(refer to clause 7.1.).
 3. Measurement = Reading Level + Correct Factor,
 Correct Factor = Antenna Factor + Loss (Cable + Attenuator) – Amplifier Gain.
 4. Only the worst case emission was recorded, if it complies with the limit, the other emissions deemed to comply with the limit.

Test Mode	Channel	Polarization	Verdict
11G	LCH	Horizontal	PASS



PK Result:

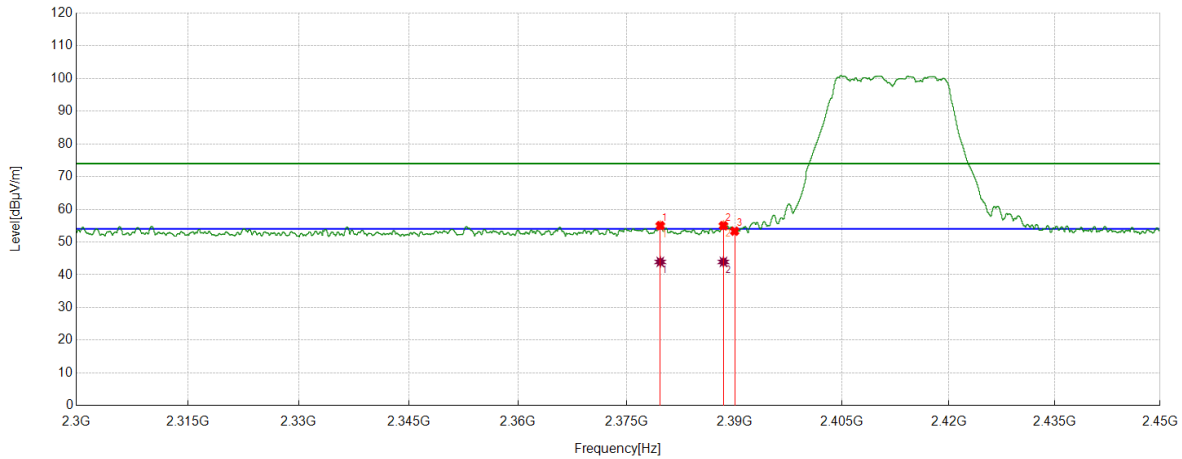
No.	Frequency	Reading Level	Correct Factor	Result	Limit	Margin	Remark
	[MHz]	[dBuV]	[dB/m]	[dBuV/m]	[dBuV/m]	[dB]	
1	2380.3538	41.91	13.60	55.51	74.00	-18.49	Horizontal
2	2387.3484	43.10	13.52	56.62	74.00	-17.38	Horizontal
3	2390.0000	41.47	13.48	54.95	74.00	-19.05	Horizontal

AV Result:

No.	Frequency	Reading Level	Correct Factor	Result	Limit	Margin	Remark
	[MHz]	[dBuV]	[dB/m]	[dBuV/m]	[dBuV/m]	[dB]	
1	2380.3538	30.83	13.60	44.43	54.00	-9.57	Horizontal
2	2387.3484	32.04	13.52	45.56	54.00	-8.44	Horizontal
3	2390.0000	30.40	13.48	43.88	54.00	-10.12	Horizontal

- Note: 1. Peak detector: RBW: 1 MHz, VBW: 3 MHz.
 2. Average detector: RBW: 1 MHz, VBW: 1/T MHz(refer to clause 7.1.).
 3. Measurement = Reading Level + Correct Factor,
 Correct Factor = Antenna Factor + Loss (Cable + Attenuator) – Amplifier Gain.
 4. Only the worst case emission was recorded, if it complies with the limit, the other emissions deemed to comply with the limit.

Test Mode	Channel	Polarization	Verdict
11G	LCH	Vertical	PASS



PK Result:

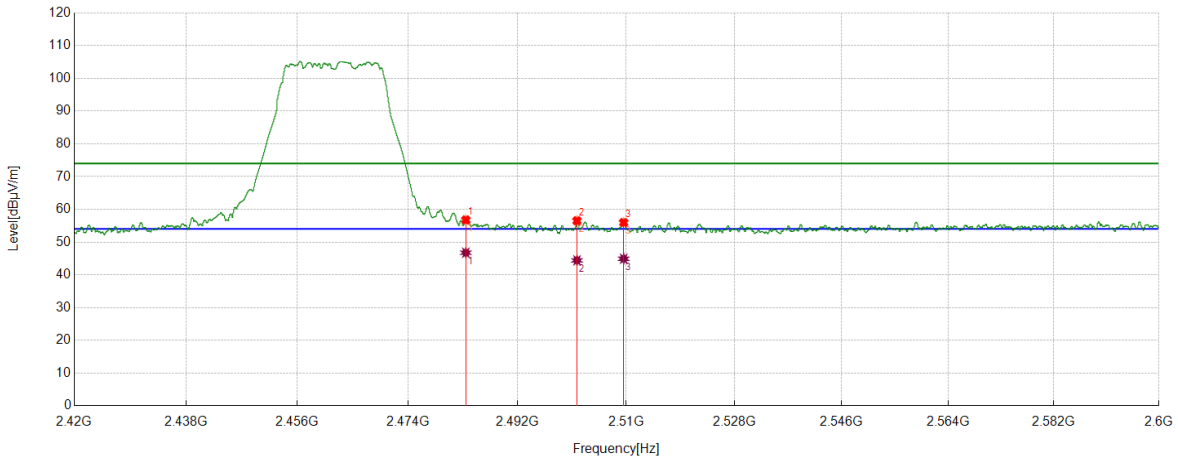
No.	Frequency	Reading Level	Correct Factor	Result	Limit	Margin	Remark
	[MHz]	[dBuV]	[dB/m]	[dBuV/m]	[dBuV/m]	[dB]	
1	2379.66	41.42	13.60	55.02	74.00	-18.98	Vertical
2	2388.4361	41.51	13.50	55.01	74.00	-18.99	Vertical
3	2390.0000	39.84	13.48	53.32	74.00	-20.68	Vertical

AV Result:

No.	Frequency	Reading Level	Correct Factor	Result	Limit	Margin	Remark
	[MHz]	[dBuV]	[dB/m]	[dBuV/m]	[dBuV/m]	[dB]	
1	2379.66	30.34	13.60	43.94	54.00	-10.06	Vertical
2	2388.4361	30.44	13.50	43.94	54.00	-10.06	Vertical

- Note: 1. Peak detector: RBW: 1 MHz, VBW: 3 MHz.
 2. Average detector: RBW: 1 MHz, VBW: 1/T MHz(refer to clause 7.1.).
 3. Measurement = Reading Level + Correct Factor,
 Correct Factor = Antenna Factor + Loss (Cable + Attenuator) – Amplifier Gain.
 4. Only the worst case emission was recorded, if it complies with the limit, the other emissions deemed to comply with the limit.

Test Mode	Channel	Polarization	Verdict
11G	HCH	Horizontal	PASS



PK Result:

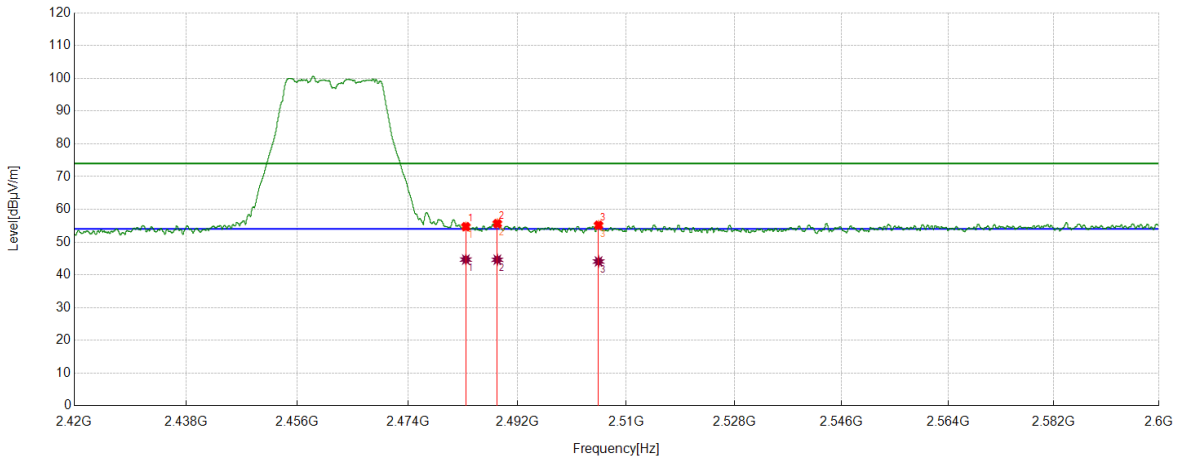
No.	Frequency	Reading Level	Correct Factor	Result	Limit	Margin	Remark
	[MHz]	[dBuV]	[dB/m]	[dBuV/m]	[dBuV/m]	[dB]	
1	2483.5000	42.50	14.25	56.75	74.00	-17.25	Horizontal
2	2501.8202	42.19	14.31	56.50	74.00	-17.50	Horizontal
3	2509.5612	41.50	14.46	55.96	74.00	-18.04	Horizontal

AV Result:

No.	Frequency	Reading Level	Correct Factor	Result	Limit	Margin	Remark
	[MHz]	[dBuV]	[dB/m]	[dBuV/m]	[dBuV/m]	[dB]	
1	2483.5000	32.49	14.25	46.74	54.00	-7.26	Horizontal
2	2501.8202	30.10	14.31	44.41	54.00	-9.59	Horizontal
3	2509.5612	30.44	14.46	44.90	54.00	-9.10	Horizontal

- Note: 1. Peak detector: RBW: 1 MHz, VBW: 3 MHz.
 2. Average detector: RBW: 1 MHz, VBW: 1/T MHz(refer to clause 7.1.).
 3. Measurement = Reading Level + Correct Factor,
 Correct Factor = Antenna Factor + Loss (Cable + Attenuator) – Amplifier Gain.
 4. Only the worst case emission was recorded, if it complies with the limit, the other emissions deemed to comply with the limit.

Test Mode	Channel	Polarization	Verdict
11G	HCH	Vertical	PASS



PK Result:

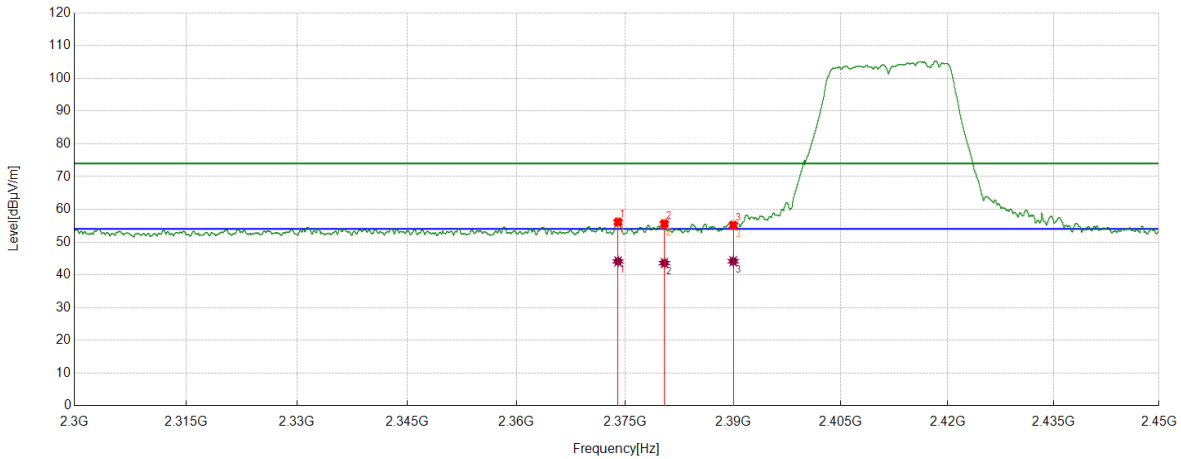
No.	Frequency	Reading Level	Correct Factor	Result	Limit	Margin	Remark
	[MHz]	[dBuV]	[dB/m]	[dBuV/m]	[dBuV/m]	[dB]	
1	2483.5000	40.45	14.25	54.70	74.00	-19.30	Vertical
2	2488.6786	41.29	14.34	55.63	74.00	-18.37	Vertical
3	2505.3982	40.76	14.38	55.14	74.00	-18.86	Vertical

AV Result:

No.	Frequency	Reading Level	Correct Factor	Result	Limit	Margin	Remark
	[MHz]	[dBuV]	[dB/m]	[dBuV/m]	[dBuV/m]	[dB]	
1	2483.5000	30.40	14.25	44.65	54.00	-9.35	Vertical
2	2488.6786	30.26	14.34	44.60	54.00	-9.40	Vertical
3	2505.3982	29.69	14.38	44.07	54.00	-9.93	Vertical

- Note: 1. Peak detector: RBW: 1 MHz, VBW: 3 MHz.
 2. Average detector: RBW: 1 MHz, VBW: 1/T MHz(refer to clause 7.1.).
 3. Measurement = Reading Level + Correct Factor,
 Correct Factor = Antenna Factor + Loss (Cable + Attenuator) – Amplifier Gain.
 4. Only the worst case emission was recorded, if it complies with the limit, the other emissions deemed to comply with the limit.

Test Mode	Channel	Polarization	Verdict
11N HT20	LCH	Horizontal	PASS



PK Result:

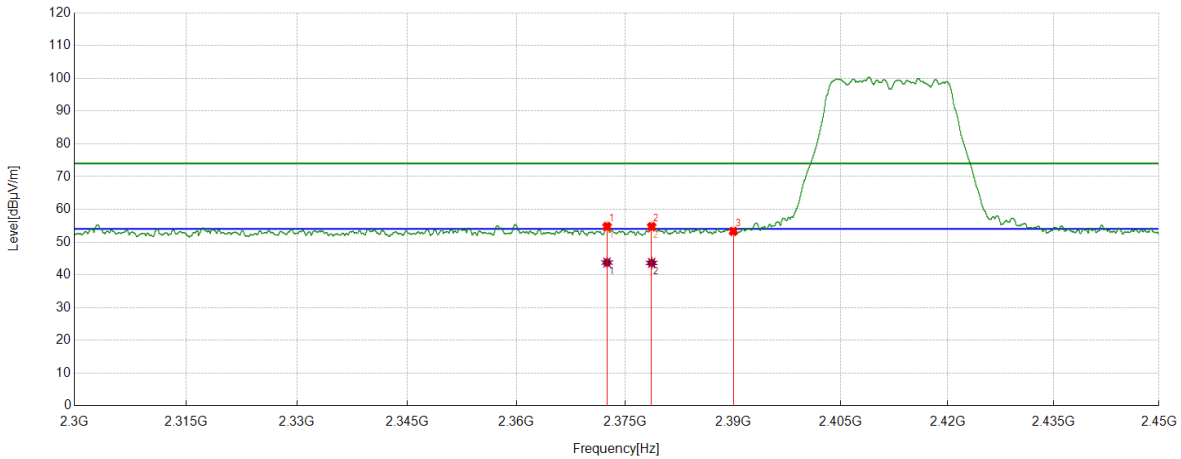
No.	Frequency	Reading Level	Correct Factor	Result	Limit	Margin	Remark
	[MHz]	[dBuV]	[dB/m]	[dBuV/m]	[dBuV/m]	[dB]	
1	2374.0155	42.53	13.57	56.10	74.00	-17.90	Horizontal
2	2380.4288	42.00	13.60	55.60	74.00	-18.40	Horizontal
3	2390.0000	41.67	13.48	55.15	74.00	-18.85	Horizontal

AV Result:

No.	Frequency	Reading Level	Correct Factor	Result	Limit	Margin	Remark
	[MHz]	[dBuV]	[dB/m]	[dBuV/m]	[dBuV/m]	[dB]	
1	2374.0155	30.52	13.57	44.09	54.00	-9.91	Horizontal
2	2380.4288	29.98	13.60	43.58	54.00	-10.42	Horizontal
3	2390.0000	30.64	13.48	44.12	54.00	-9.88	Horizontal

- Note: 1. Peak detector: RBW: 1 MHz, VBW: 3 MHz.
 2. Average detector: RBW: 1 MHz, VBW: 1/T MHz(refer to clause 7.1.).
 3. Measurement = Reading Level + Correct Factor,
 Correct Factor = Antenna Factor + Loss (Cable + Attenuator) – Amplifier Gain.
 4. Only the worst case emission was recorded, if it complies with the limit, the other emissions deemed to comply with the limit.

Test Mode	Channel	Polarization	Verdict
11N HT20	LCH	Vertical	PASS



PK Result:

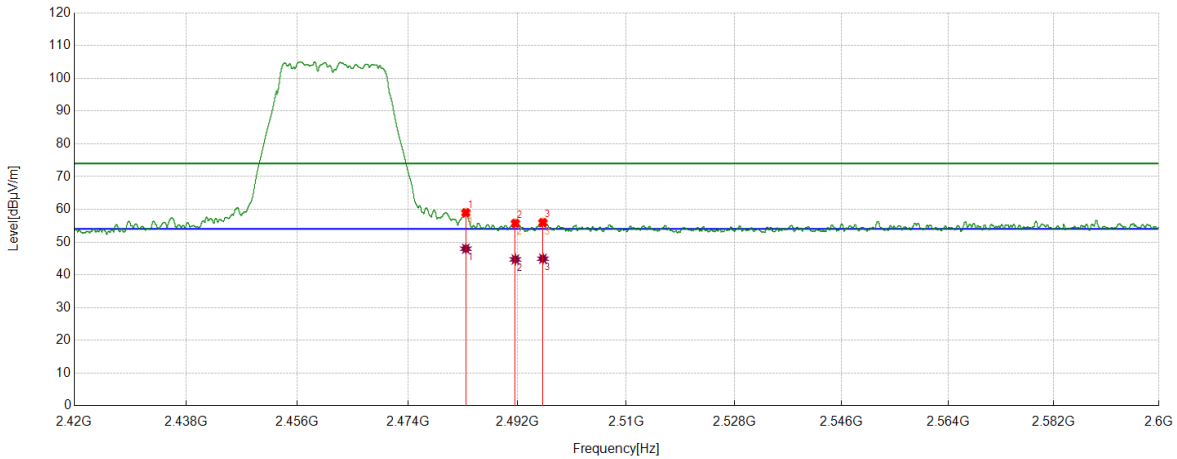
No.	Frequency	Reading Level	Correct Factor	Result	Limit	Margin	Remark
	[MHz]	[dBuV]	[dB/m]	[dBuV/m]	[dBuV/m]	[dB]	
1	2372.4966	41.18	13.57	54.75	74.00	-19.25	Vertical
2	2378.6661	41.10	13.59	54.69	74.00	-19.31	Vertical
3	2390.0000	39.79	13.48	53.27	74.00	-20.73	Vertical

AV Result:

No.	Frequency	Reading Level	Correct Factor	Result	Limit	Margin	Remark
	[MHz]	[dBuV]	[dB/m]	[dBuV/m]	[dBuV/m]	[dB]	
1	2372.4966	30.16	13.57	43.73	54.00	-10.27	Vertical
2	2378.6661	30.03	13.59	43.62	54.00	-10.38	Vertical

- Note: 1. Peak detector: RBW: 1 MHz, VBW: 3 MHz.
 2. Average detector: RBW: 1 MHz, VBW: 1/T MHz(refer to clause 7.1.).
 3. Measurement = Reading Level + Correct Factor,
 Correct Factor = Antenna Factor + Loss (Cable + Attenuator) – Amplifier Gain.
 4. Only the worst case emission was recorded, if it complies with the limit, the other emissions deemed to comply with the limit.

Test Mode	Channel	Polarization	Verdict
11N HT20	HCH	Horizontal	PASS



PK Result:

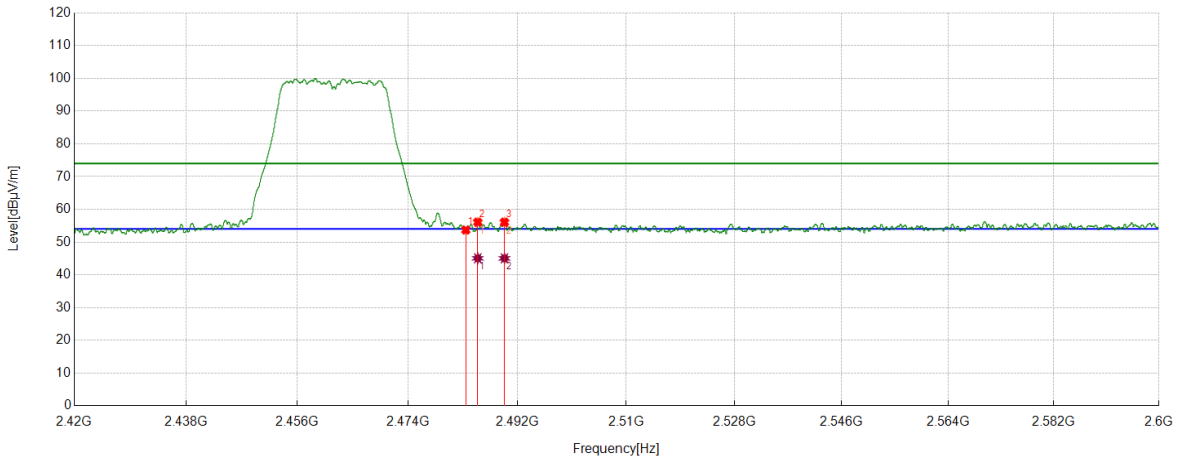
No.	Frequency	Reading Level	Correct Factor	Result	Limit	Margin	Remark
	[MHz]	[dBuV]	[dB/m]	[dBuV/m]	[dBuV/m]	[dB]	
1	2483.5000	44.72	14.25	58.97	74.00	-15.03	Horizontal
2	2491.649	41.36	14.36	55.72	74.00	-18.28	Horizontal
3	2496.1945	41.63	14.32	55.95	74.00	-18.05	Horizontal

AV Result:

No.	Frequency	Reading Level	Correct Factor	Result	Limit	Margin	Remark
	[MHz]	[dBuV]	[dB/m]	[dBuV/m]	[dBuV/m]	[dB]	
1	2483.5000	33.72	14.25	47.97	54.00	-6.03	Horizontal
2	2491.649	30.33	14.36	44.69	54.00	-9.31	Horizontal
3	2496.1945	30.59	14.32	44.91	54.00	-9.09	Horizontal

- Note: 1. Peak detector: RBW: 1 MHz, VBW: 3 MHz.
 2. Average detector: RBW: 1 MHz, VBW: 1/T MHz(refer to clause 7.1.).
 3. Measurement = Reading Level + Correct Factor,
 Correct Factor = Antenna Factor + Loss (Cable + Attenuator) – Amplifier Gain.
 4. Only the worst case emission was recorded, if it complies with the limit, the other emissions deemed to comply with the limit.

Test Mode	Channel	Polarization	Verdict
11N HT20	HCH	Vertical	PASS



PK Result:

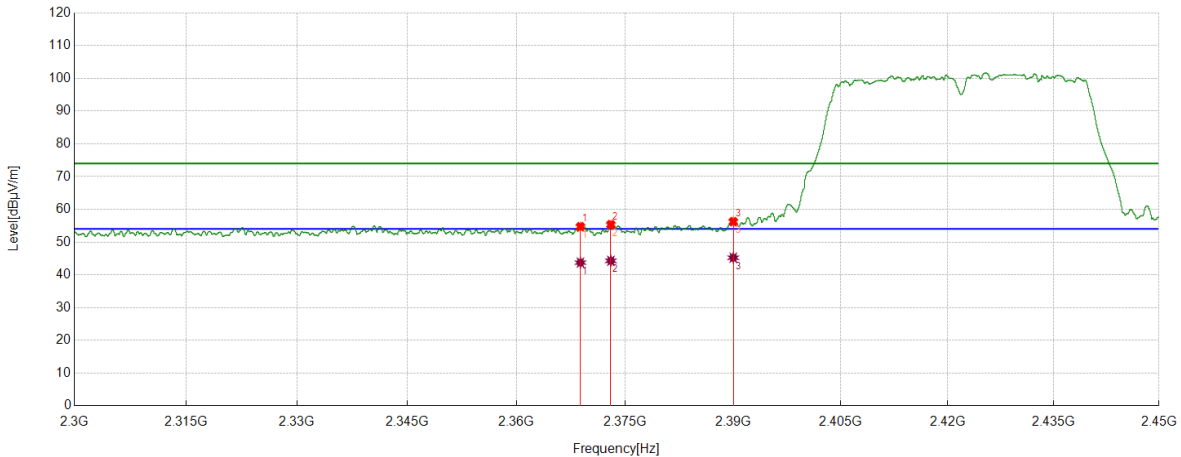
No.	Frequency	Reading Level	Correct Factor	Result	Limit	Margin	Remark
	[MHz]	[dBuV]	[dB/m]	[dBuV/m]	[dBuV/m]	[dB]	
1	2483.5000	39.44	14.25	53.69	74.00	-20.31	Vertical
2	2485.4607	41.78	14.29	56.07	74.00	-17.93	Vertical
3	2489.8487	41.69	14.37	56.06	74.00	-17.94	Vertical

AV Result:

No.	Frequency	Reading Level	Correct Factor	Result	Limit	Margin	Remark
	[MHz]	[dBuV]	[dB/m]	[dBuV/m]	[dBuV/m]	[dB]	
1	2485.4607	30.75	14.29	45.04	54.00	-8.96	Vertical
2	2489.8487	30.65	14.37	45.02	54.00	-8.98	Vertical

- Note: 1. Peak detector: RBW: 1 MHz, VBW: 3 MHz.
 2. Average detector: RBW: 1 MHz, VBW: 1/T MHz(refer to clause 7.1.).
 3. Measurement = Reading Level + Correct Factor,
 Correct Factor = Antenna Factor + Loss (Cable + Attenuator) – Amplifier Gain.
 4. Only the worst case emission was recorded, if it complies with the limit, the other emissions deemed to comply with the limit.

Test Mode	Channel	Polarization	Verdict
11N HT40	LCH	Horizontal	PASS



PK Result:

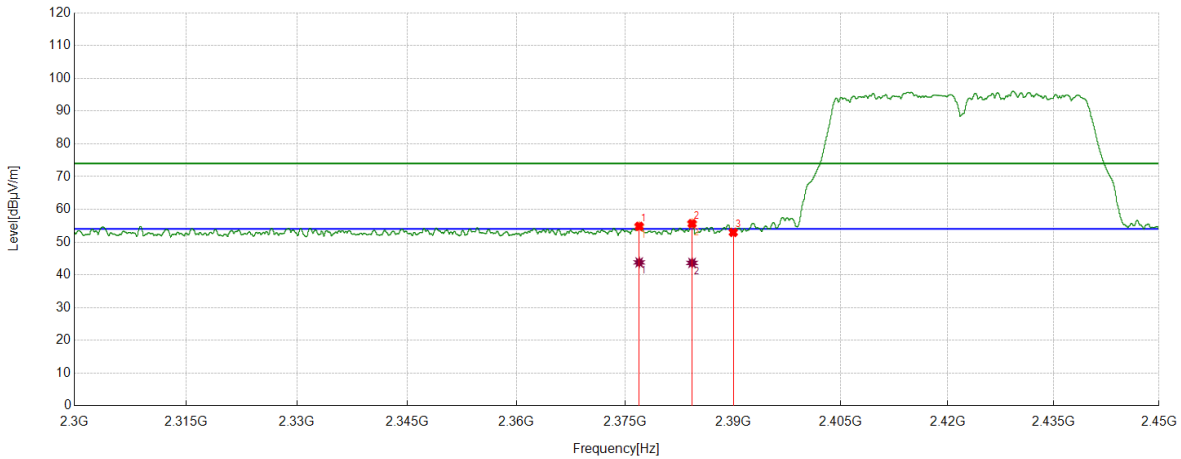
No.	Frequency [MHz]	Reading Level [dBuV]	Correct Factor [dB/m]	Result [dBuV/m]	Limit [dBuV/m]	Margin [dB]	Remark
1	2368.8211	41.18	13.54	54.72	74.00	-19.28	Horizontal
2	2373.0216	41.79	13.56	55.35	74.00	-18.65	Horizontal
3	2390.0000	42.77	13.48	56.25	74.00	-17.75	Horizontal

AV Result:

No.	Frequency [MHz]	Reading Level [dBuV]	Correct Factor [dB/m]	Result [dBuV/m]	Limit [dBuV/m]	Margin [dB]	Remark
1	2368.8211	30.18	13.54	43.72	54.00	-10.28	Horizontal
2	2373.0216	30.71	13.56	44.27	54.00	-9.73	Horizontal
3	2390.0000	31.74	13.48	45.22	54.00	-8.78	Horizontal

- Note: 1. Peak detector: RBW: 1 MHz, VBW: 3 MHz.
 2. Average detector: RBW: 1 MHz, VBW: 1/T MHz(refer to clause 7.1.).
 3. Measurement = Reading Level + Correct Factor,
 Correct Factor = Antenna Factor + Loss (Cable + Attenuator) – Amplifier Gain.
 4. Only the worst case emission was recorded, if it complies with the limit, the other emissions deemed to comply with the limit.

Test Mode	Channel	Polarization	Verdict
11N HT40	LCH	Vertical	PASS



PK Result:

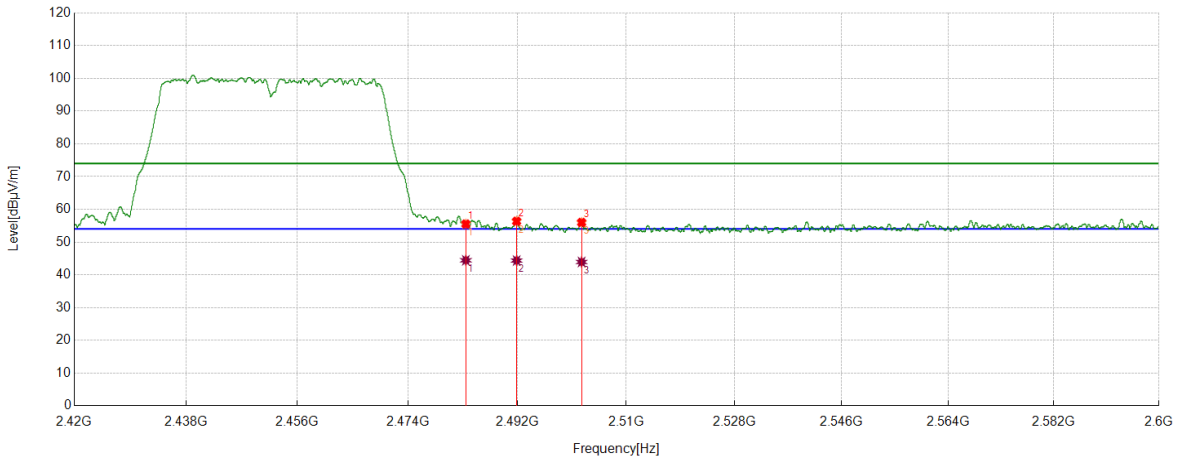
No.	Frequency	Reading Level	Correct Factor	Result	Limit	Margin	Remark
	[MHz]	[dBuV]	[dB/m]	[dBuV/m]	[dBuV/m]	[dB]	
1	2376.9409	41.21	13.59	54.80	74.00	-19.20	Vertical
2	2384.273	42.08	13.55	55.63	74.00	-18.37	Vertical
3	2390.0000	39.47	13.48	52.95	74.00	-21.05	Vertical

AV Result:

No.	Frequency	Reading Level	Correct Factor	Result	Limit	Margin	Remark
	[MHz]	[dBuV]	[dB/m]	[dBuV/m]	[dBuV/m]	[dB]	
1	2376.9409	30.19	13.59	43.78	54.00	-10.22	Vertical
2	2384.273	30.08	13.55	43.63	54.00	-10.37	Vertical

- Note: 1. Peak detector: RBW: 1 MHz, VBW: 3 MHz.
 2. Average detector: RBW: 1 MHz, VBW: 1/T MHz(refer to clause 7.1.).
 3. Measurement = Reading Level + Correct Factor,
 Correct Factor = Antenna Factor + Loss (Cable + Attenuator) – Amplifier Gain.
 4. Only the worst case emission was recorded, if it complies with the limit, the other emissions deemed to comply with the limit.

Test Mode	Channel	Polarization	Verdict
11N HT40	HCH	Horizontal	PASS



PK Result:

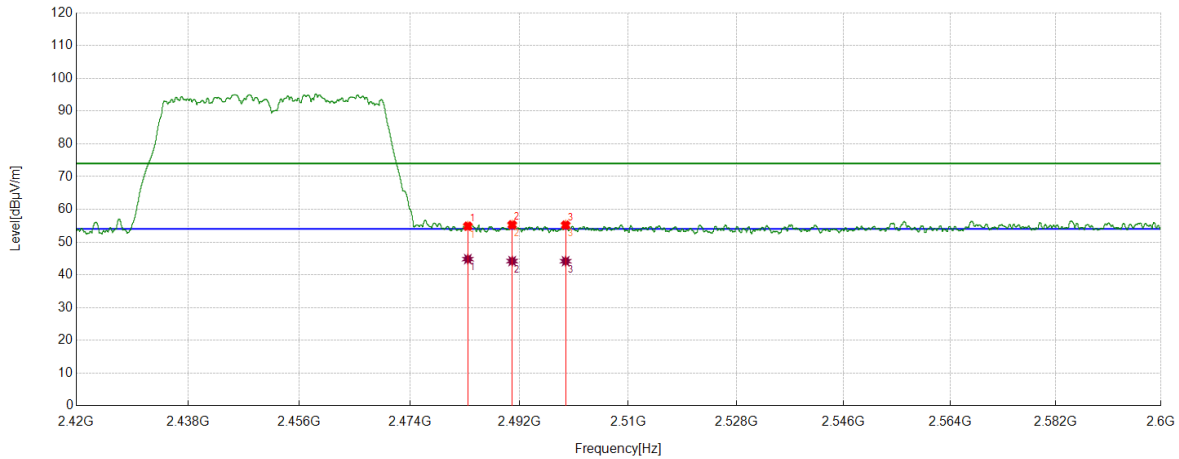
No.	Frequency	Reading Level	Correct Factor	Result	Limit	Margin	Remark
	[MHz]	[dBuV]	[dB/m]	[dBuV/m]	[dBuV/m]	[dB]	
1	2483.5000	41.26	14.25	55.51	74.00	-18.49	Horizontal
2	2491.8515	42.00	14.35	56.35	74.00	-17.65	Horizontal
3	2502.5853	41.66	14.33	55.99	74.00	-18.01	Horizontal

AV Result:

No.	Frequency	Reading Level	Correct Factor	Result	Limit	Margin	Remark
	[MHz]	[dBuV]	[dB/m]	[dBuV/m]	[dBuV/m]	[dB]	
1	2483.5000	30.18	14.25	44.43	54.00	-9.57	Horizontal
2	2491.8515	30.00	14.35	44.35	54.00	-9.65	Horizontal
3	2502.5853	29.58	14.33	43.91	54.00	-10.09	Horizontal

- Note: 1. Peak detector: RBW: 1 MHz, VBW: 3 MHz.
 2. Average detector: RBW: 1 MHz, VBW: 1/T MHz(refer to clause 7.1.).
 3. Measurement = Reading Level + Correct Factor,
 Correct Factor = Antenna Factor + Loss (Cable + Attenuator) – Amplifier Gain.
 4. Only the worst case emission was recorded, if it complies with the limit, the other emissions deemed to comply with the limit.

Test Mode	Channel	Polarization	Verdict
11N HT40	HCH	Vertical	PASS



PK Result:

No.	Frequency	Reading Level	Correct Factor	Result	Limit	Margin	Remark
	[MHz]	[dBuV]	[dB/m]	[dBuV/m]	[dBuV/m]	[dB]	
1	2483.5000	40.60	14.25	54.85	74.00	-19.15	Vertical
2	2490.7938	40.91	14.36	55.27	74.00	-18.73	Vertical
3	2499.615	40.89	14.29	55.18	74.00	-18.82	Vertical

AV Result:

No.	Frequency	Reading Level	Correct Factor	Result	Limit	Margin	Remark
	[MHz]	[dBuV]	[dB/m]	[dBuV/m]	[dBuV/m]	[dB]	
1	2483.5000	30.54	14.25	44.79	54.00	-9.21	Vertical
2	2490.7938	29.83	14.36	44.19	54.00	-9.81	Vertical
3	2499.615	29.86	14.29	44.15	54.00	-9.85	Vertical

- Note: 1. Peak detector: RBW: 1 MHz, VBW: 3 MHz.
 2. Average detector: RBW: 1 MHz, VBW: 1/T MHz(refer to clause 7.1.).
 3. Measurement = Reading Level + Correct Factor,
 Correct Factor = Antenna Factor + Loss (Cable + Attenuator) – Amplifier Gain.
 4. Only the worst case emission was recorded, if it complies with the limit, the other emissions deemed to comply with the limit.

8.4. SPURIOUS EMISSIONS

TEST RESULTS TABLE

1) For 1GHz~18GHz

Test Mode	Channel	Puw(dBm)	Verdict
11B	LCH	<Limit	PASS
	MCH	<Limit	PASS
	HCH	<Limit	PASS
11G	LCH	<Limit	PASS
	MCH	<Limit	PASS
	HCH	<Limit	PASS
11N HT20	LCH	<Limit	PASS
	MCH	<Limit	PASS
	HCH	<Limit	PASS
11N HT40	LCH	<Limit	PASS
	MCH	<Limit	PASS
	HCH	<Limit	PASS

2) For 9kHz~30MHz

Test Mode	Channel	Puw(dBm)	Verdict
11B	MCH	<Limit	PASS

Remark:

1) Through pre-testing all the test modes and test channels, but only the data of the worst case is included in this test report.

3) For 30MHz~1GHz

Test Mode	Channel	Puw(dBm)	Verdict
11B	MCH	<Limit	PASS

Remark:

1) Through pre-testing all the test modes and test channels, but only the data of the worst case is included in this test report.

4) For 18GHz~26.5GHz

Test Mode	Channel	Puw(dBm)	Verdict
11B	MCH	<Limit	PASS

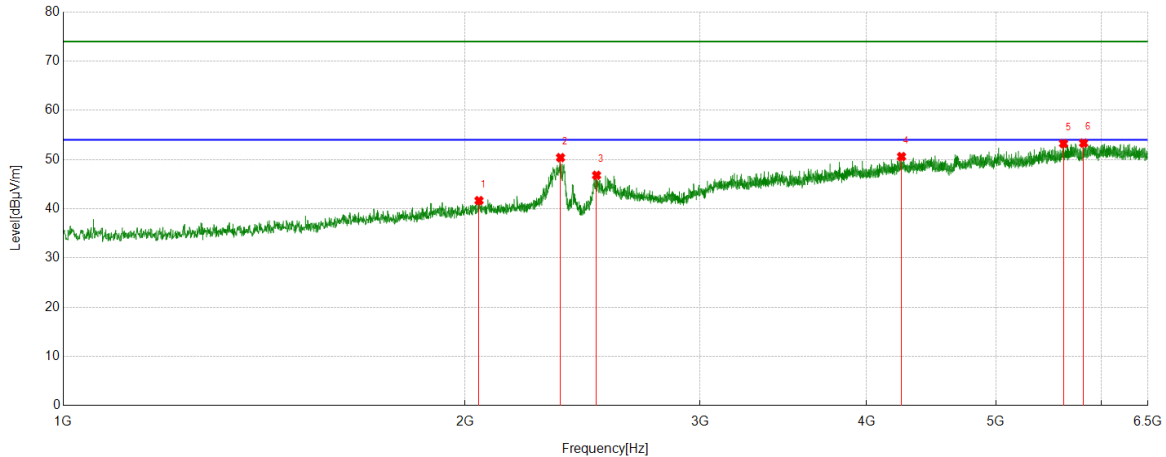
Remark:

1) Through pre-testing all the test modes and test channels, but only the data of the worst case is included in this test report.

Part 1: 1GHz~6.5GHz

HARMONICS AND SPURIOUS EMISSIONS

Test Mode	Channel	Polarization	Verdict
11B	LCH	Horizontal	PASS

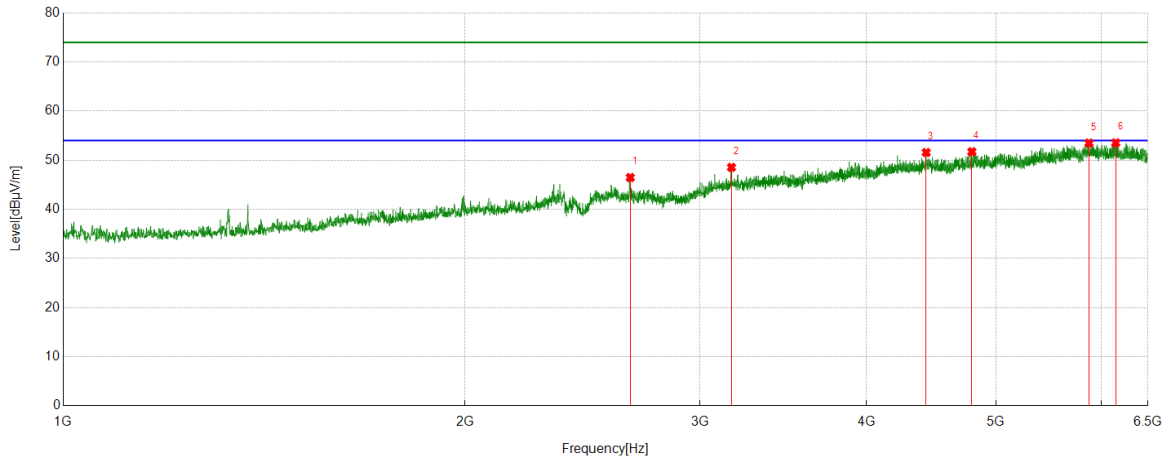


PK Result:

No.	Frequency	Reading Level	Correct Factor	Result	Limit	Margin	Remark
	[MHz]	[dBuV]	[dB/m]	[dBuV/m]	[dBuV/m]	[dB]	
1	2049.2562	37.41	4.25	41.66	74.00	-32.34	Horizontal
2	2358.6698	45.62	4.78	50.40	74.00	-23.60	Horizontal
3	2509.9387	40.89	5.91	46.80	74.00	-27.20	Horizontal
4	4248.156	36.65	13.96	50.61	74.00	-23.39	Horizontal
5	5618.5148	35.82	17.44	53.26	74.00	-20.74	Horizontal
6	5816.5396	34.89	18.46	53.35	74.00	-20.65	Horizontal

- Note: 1. Measurement = Reading Level + Correct Factor,
Correct Factor = Antenna Factor + Loss (Cable + Filter) – Amplifier Gain.
2. If Peak Result complies with AV limit, AV Result is deemed to comply with AV limit.
3. Test setup: RBW: 1 MHz, VBW: 3 MHz, Sweep time: auto.
4. Peak: Peak detector.
5. For below 3GHz part, filter losses were only considered in the spurious frequency bands and the authorized band was not corrected for Band Reject Filter losses.
6. Only the worst case emission was recorded, if it complies with the limit, the other emissions deemed to comply with the limit.

Test Mode	Channel	Polarization	Verdict
11B	LCH	Vertical	PASS

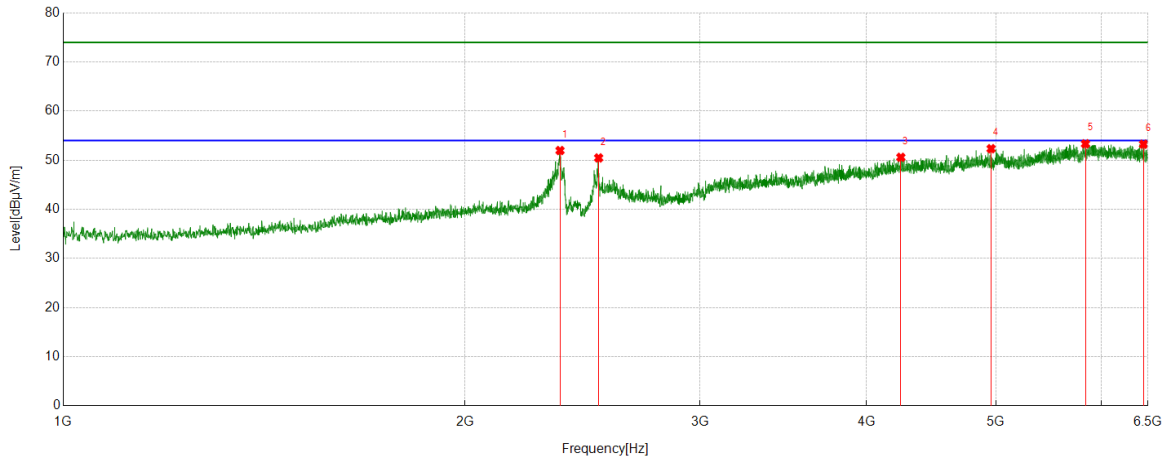


PK Result:

No.	Frequency	Reading Level	Correct Factor	Result	Limit	Margin	Remark
	[MHz]	[dBuV]	[dB/m]	[dBuV/m]	[dBuV/m]	[dB]	
1	2660.5201	40.44	6.04	46.48	74.00	-27.52	Vertical
2	3167.9585	39.19	9.36	48.55	74.00	-25.45	Vertical
3	4433.1166	37.44	14.14	51.58	74.00	-22.42	Vertical
4	4796.8496	36.33	15.40	51.73	74.00	-22.27	Vertical
5	5871.5464	35.61	17.88	53.49	74.00	-20.51	Vertical
6	6148.6436	35.05	18.50	53.55	74.00	-20.45	Vertical

- Note: 1. Measurement = Reading Level + Correct Factor,
Correct Factor = Antenna Factor + Loss (Cable + Filter) – Amplifier Gain.
2. If Peak Result complies with AV limit, AV Result is deemed to comply with AV limit.
3. Test setup: RBW: 1 MHz, VBW: 3 MHz, Sweep time: auto.
4. Peak: Peak detector.
5. For below 3GHz part, filter losses were only considered in the spurious frequency bands and the authorized band was not corrected for Band Reject Filter losses.
6. Only the worst case emission was recorded, if it complies with the limit, the other emissions deemed to comply with the limit.

Test Mode	Channel	Polarization	Verdict
11B	MCH	Horizontal	PASS

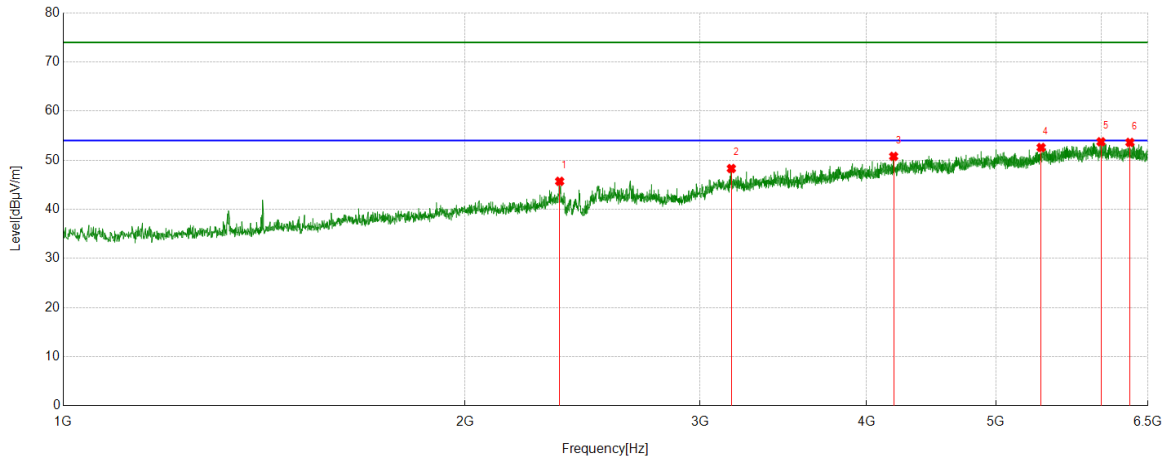


PK Result:

No.	Frequency	Reading Level	Correct Factor	Result	Limit	Margin	Remark
	[MHz]	[dBuV]	[dB/m]	[dBuV/m]	[dBuV/m]	[dB]	
1	2356.6071	47.20	4.78	51.98	74.00	-22.02	Horizontal
2	2518.8774	44.74	5.73	50.47	74.00	-23.53	Horizontal
3	4243.3429	36.64	13.96	50.60	74.00	-23.40	Horizontal
4	4958.4323	36.88	15.47	52.35	74.00	-21.65	Horizontal
5	5835.1044	34.97	18.37	53.34	74.00	-20.66	Horizontal
6	6450.4938	34.39	18.87	53.26	74.00	-20.74	Horizontal

- Note: 1. Measurement = Reading Level + Correct Factor,
Correct Factor = Antenna Factor + Loss (Cable + Filter) – Amplifier Gain.
2. If Peak Result complies with AV limit, AV Result is deemed to comply with AV limit.
3. Test setup: RBW: 1 MHz, VBW: 3 MHz, Sweep time: auto.
4. Peak: Peak detector.
5. For below 3GHz part, filter losses were only considered in the spurious frequency bands and the authorized band was not corrected for Band Reject Filter losses.
6. Only the worst case emission was recorded, if it complies with the limit, the other emissions deemed to comply with the limit.

Test Mode	Channel	Polarization	Verdict
11B	MCH	Vertical	PASS

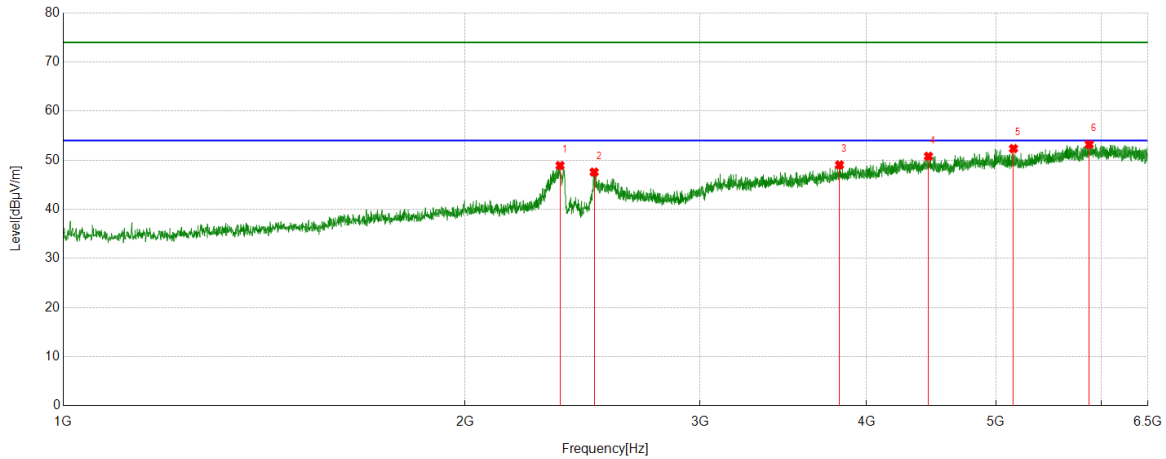


PK Result:

No.	Frequency	Reading Level	Correct Factor	Result	Limit	Margin	Remark
	[MHz]	[dBuV]	[dB/m]	[dBuV/m]	[dBuV/m]	[dB]	
1	2355.2319	40.92	4.78	45.70	74.00	-28.30	Vertical
2	3167.2709	38.95	9.36	48.31	74.00	-25.69	Vertical
3	4191.0864	37.69	13.10	50.79	74.00	-23.21	Vertical
4	5405.3632	35.66	16.93	52.59	74.00	-21.41	Vertical
5	5993.9367	35.47	18.29	53.76	74.00	-20.24	Vertical
6	6300.6001	34.85	18.78	53.63	74.00	-20.37	Vertical

- Note: 1. Measurement = Reading Level + Correct Factor,
Correct Factor = Antenna Factor + Loss (Cable + Filter) – Amplifier Gain.
2. If Peak Result complies with AV limit, AV Result is deemed to comply with AV limit.
3. Test setup: RBW: 1 MHz, VBW: 3 MHz, Sweep time: auto.
4. Peak: Peak detector.
5. For below 3GHz part, filter losses were only considered in the spurious frequency bands and the authorized band was not corrected for Band Reject Filter losses.
6. Only the worst case emission was recorded, if it complies with the limit, the other emissions deemed to comply with the limit.

Test Mode	Channel	Polarization	Verdict
11B	HCH	Horizontal	PASS

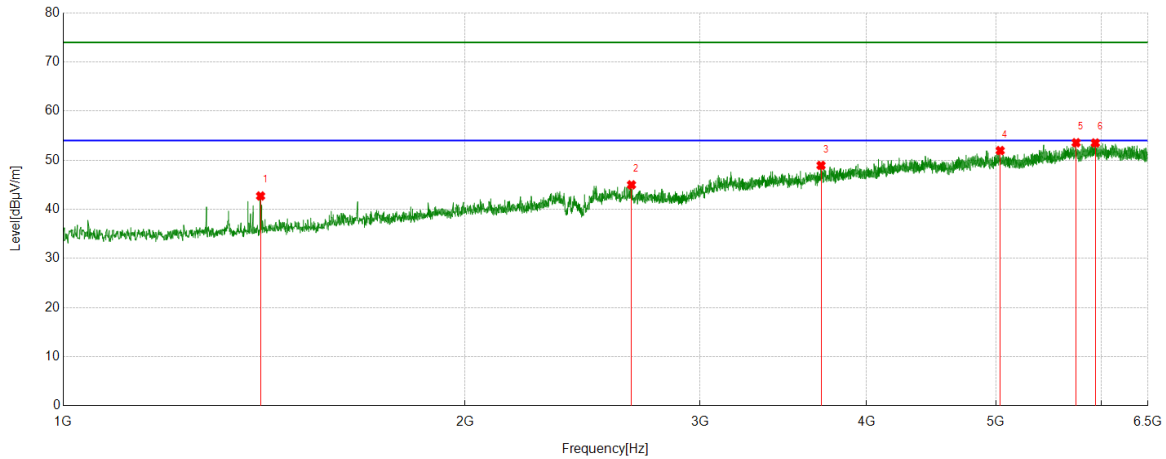


PK Result:

No.	Frequency	Reading Level	Correct Factor	Result	Limit	Margin	Remark
	[MHz]	[dBuV]	[dB/m]	[dBuV/m]	[dBuV/m]	[dB]	
1	2356.6071	44.14	4.78	48.92	74.00	-25.08	Horizontal
2	2499.625	41.70	5.88	47.58	74.00	-26.42	Horizontal
3	3817.0396	36.85	12.20	49.05	74.00	-24.95	Horizontal
4	4450.3063	36.54	14.26	50.80	74.00	-23.20	Horizontal
5	5153.7067	37.17	15.20	52.37	74.00	-21.63	Horizontal
6	5873.6092	35.41	17.82	53.23	74.00	-20.77	Horizontal

- Note: 1. Measurement = Reading Level + Correct Factor,
Correct Factor = Antenna Factor + Loss (Cable + Filter) – Amplifier Gain.
2. If Peak Result complies with AV limit, AV Result is deemed to comply with AV limit.
3. Test setup: RBW: 1 MHz, VBW: 3 MHz, Sweep time: auto.
4. Peak: Peak detector.
5. For below 3GHz part, filter losses were only considered in the spurious frequency bands and the authorized band was not corrected for Band Reject Filter losses.
6. Only the worst case emission was recorded, if it complies with the limit, the other emissions deemed to comply with the limit.

Test Mode	Channel	Polarization	Verdict
11B	HCH	Vertical	PASS

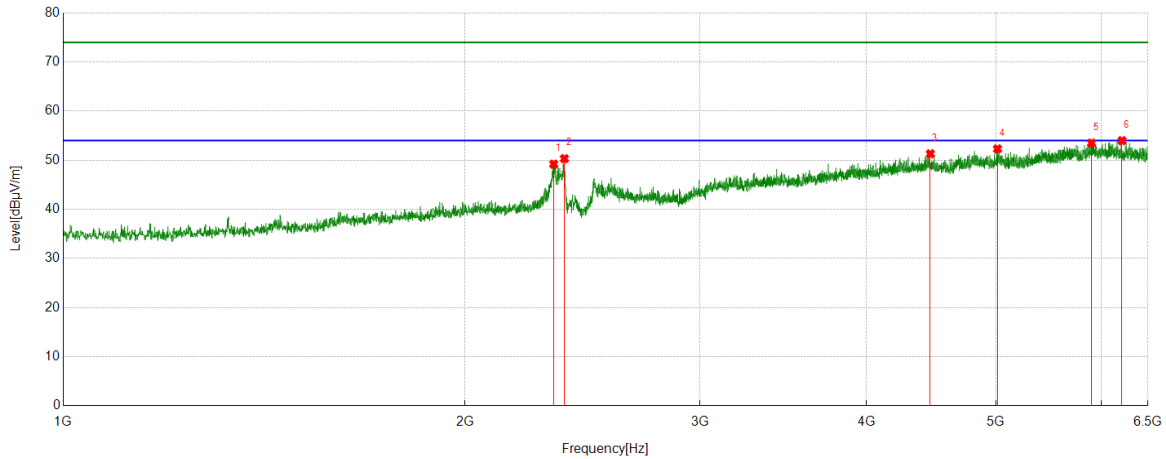


PK Result:

No.	Frequency	Reading Level	Correct Factor	Result	Limit	Margin	Remark
	[MHz]	[dBuV]	[dB/m]	[dBuV/m]	[dBuV/m]	[dB]	
1	1405.6757	44.07	-1.35	42.72	74.00	-31.28	Vertical
2	2666.0208	38.85	6.14	44.99	74.00	-29.01	Vertical
3	3697.3997	37.26	11.69	48.95	74.00	-25.05	Vertical
4	5036.8171	36.28	15.69	51.97	74.00	-22.03	Vertical
5	5741.5927	35.75	17.82	53.57	74.00	-20.43	Vertical
6	5935.4919	34.87	18.65	53.52	74.00	-20.48	Vertical

- Note: 1. Measurement = Reading Level + Correct Factor,
Correct Factor = Antenna Factor + Loss (Cable + Filter) – Amplifier Gain.
2. If Peak Result complies with AV limit, AV Result is deemed to comply with AV limit.
3. Test setup: RBW: 1 MHz, VBW: 3 MHz, Sweep time: auto.
4. Peak: Peak detector.
5. For below 3GHz part, filter losses were only considered in the spurious frequency bands and the authorized band was not corrected for Band Reject Filter losses.
6. Only the worst case emission was recorded, if it complies with the limit, the other emissions deemed to comply with the limit.

Test Mode	Channel	Polarization	Verdict
11G	LCH	Horizontal	PASS

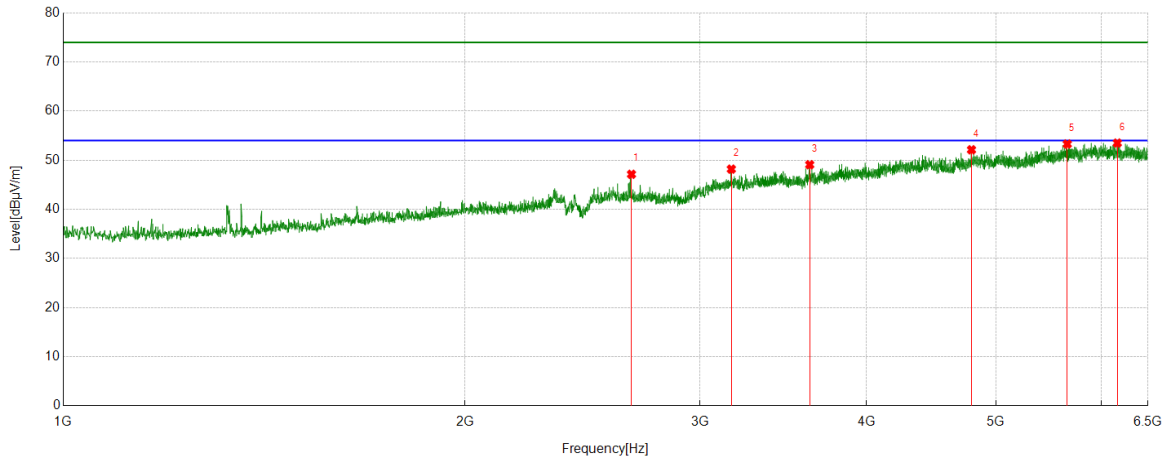


PK Result:

No.	Frequency	Reading Level	Correct Factor	Result	Limit	Margin	Remark
	[MHz]	[dBuV]	[dB/m]	[dBuV/m]	[dBuV/m]	[dB]	
1	2331.1664	44.17	5.03	49.20	74.00	-24.80	Horizontal
2	2374.4843	45.51	4.82	50.33	74.00	-23.67	Horizontal
3	4464.7456	36.57	14.74	51.31	74.00	-22.69	Horizontal
4	5013.4392	36.89	15.42	52.31	74.00	-21.69	Horizontal
5	5896.2995	35.54	17.95	53.49	74.00	-20.51	Horizontal
6	6215.3394	35.58	18.41	53.99	74.00	-20.01	Horizontal

- Note: 1. Measurement = Reading Level + Correct Factor,
Correct Factor = Antenna Factor + Loss (Cable + Filter) – Amplifier Gain.
2. If Peak Result complies with AV limit, AV Result is deemed to comply with AV limit.
3. Test setup: RBW: 1 MHz, VBW: 3 MHz, Sweep time: auto.
4. Peak: Peak detector.
5. For below 3GHz part, filter losses were only considered in the spurious frequency bands and the authorized band was not corrected for Band Reject Filter losses.
6. Only the worst case emission was recorded, if it complies with the limit, the other emissions deemed to comply with the limit.

Test Mode	Channel	Polarization	Verdict
11G	LCH	Vertical	PASS

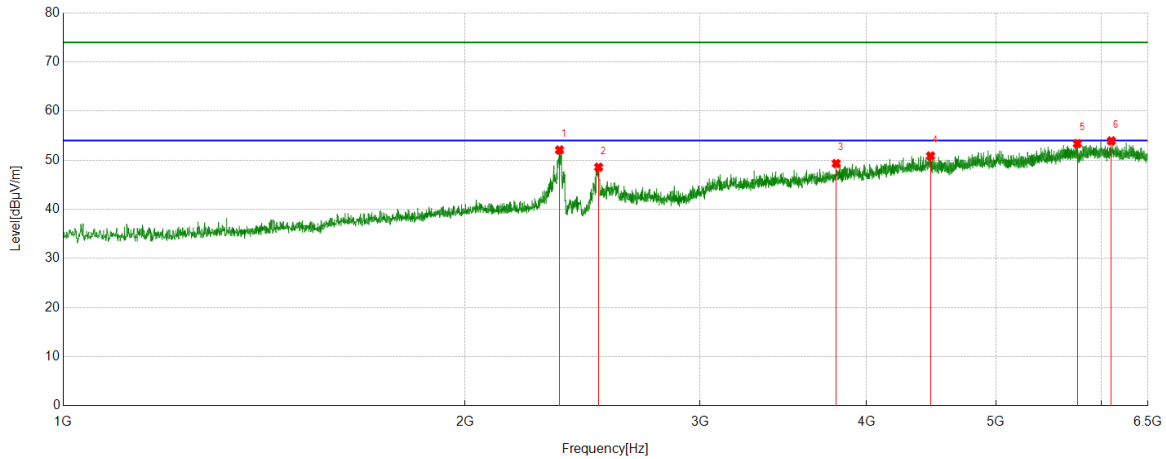


PK Result:

No.	Frequency	Reading Level	Correct Factor	Result	Limit	Margin	Remark
	[MHz]	[dBuV]	[dB/m]	[dBuV/m]	[dBuV/m]	[dB]	
1	2666.0208	41.00	6.14	47.14	74.00	-26.86	Vertical
2	3167.2709	38.83	9.36	48.19	74.00	-25.81	Vertical
3	3625.8907	37.95	11.14	49.09	74.00	-24.91	Vertical
4	4793.4117	36.99	15.14	52.13	74.00	-21.87	Vertical
5	5654.9569	35.81	17.49	53.30	74.00	-20.70	Vertical
6	6165.1456	34.87	18.63	53.50	74.00	-20.50	Vertical

- Note: 1. Measurement = Reading Level + Correct Factor,
Correct Factor = Antenna Factor + Loss (Cable + Filter) – Amplifier Gain.
2. If Peak Result complies with AV limit, AV Result is deemed to comply with AV limit.
3. Test setup: RBW: 1 MHz, VBW: 3 MHz, Sweep time: auto.
4. Peak: Peak detector.
5. For below 3GHz part, filter losses were only considered in the spurious frequency bands and the authorized band was not corrected for Band Reject Filter losses.
6. Only the worst case emission was recorded, if it complies with the limit, the other emissions deemed to comply with the limit.

Test Mode	Channel	Polarization	Verdict
11G	MCH	Horizontal	PASS

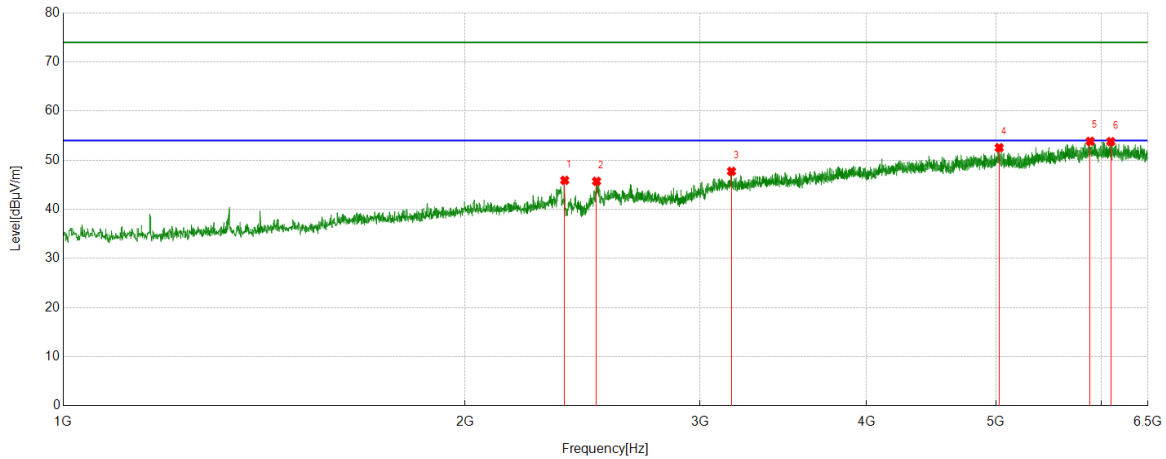


PK Result:

No.	Frequency	Reading Level	Correct Factor	Result	Limit	Margin	Remark
	[MHz]	[dBuV]	[dB/m]	[dBuV/m]	[dBuV/m]	[dB]	
1	2354.5443	47.32	4.77	52.09	74.00	-21.91	Horizontal
2	2518.8774	42.85	5.73	48.58	74.00	-25.42	Horizontal
3	3795.7245	37.28	12.05	49.33	74.00	-24.67	Horizontal
4	4466.8084	36.23	14.65	50.88	74.00	-23.12	Horizontal
5	5753.9692	35.58	17.80	53.38	74.00	-20.62	Horizontal
6	6101.8877	35.65	18.30	53.95	74.00	-20.05	Horizontal

- Note: 1. Measurement = Reading Level + Correct Factor,
Correct Factor = Antenna Factor + Loss (Cable + Filter) – Amplifier Gain.
2. If Peak Result complies with AV limit, AV Result is deemed to comply with AV limit.
3. Test setup: RBW: 1 MHz, VBW: 3 MHz, Sweep time: auto.
4. Peak: Peak detector.
5. For below 3GHz part, filter losses were only considered in the spurious frequency bands and the authorized band was not corrected for Band Reject Filter losses.
6. Only the worst case emission was recorded, if it complies with the limit, the other emissions deemed to comply with the limit.

Test Mode	Channel	Polarization	Verdict
11G	MCH	Vertical	PASS

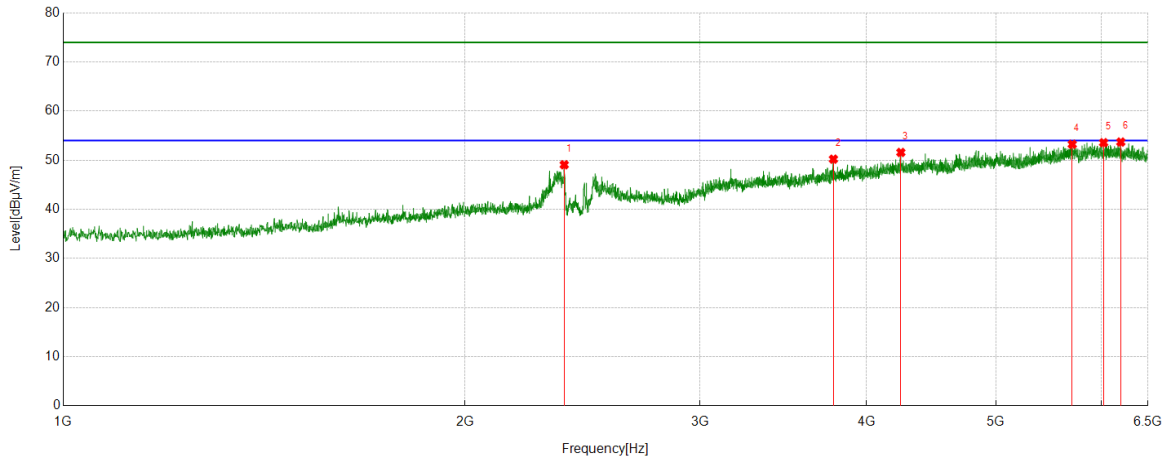


PK Result:

No.	Frequency	Reading Level	Correct Factor	Result	Limit	Margin	Remark
	[MHz]	[dBuV]	[dB/m]	[dBuV/m]	[dBuV/m]	[dB]	
1	2375.8595	41.08	4.83	45.91	74.00	-28.09	Vertical
2	2509.9387	39.80	5.91	45.71	74.00	-28.29	Vertical
3	3167.9585	38.38	9.36	47.74	74.00	-26.26	Vertical
4	5028.5661	36.79	15.77	52.56	74.00	-21.44	Vertical
5	5883.2354	36.10	17.76	53.86	74.00	-20.14	Vertical
6	6096.387	35.51	18.29	53.80	74.00	-20.20	Vertical

- Note: 1. Measurement = Reading Level + Correct Factor,
Correct Factor = Antenna Factor + Loss (Cable + Filter) – Amplifier Gain.
2. If Peak Result complies with AV limit, AV Result is deemed to comply with AV limit.
3. Test setup: RBW: 1 MHz, VBW: 3 MHz, Sweep time: auto.
4. Peak: Peak detector.
5. For below 3GHz part, filter losses were only considered in the spurious frequency bands and the authorized band was not corrected for Band Reject Filter losses.
6. Only the worst case emission was recorded, if it complies with the limit, the other emissions deemed to comply with the limit.

Test Mode	Channel	Polarization	Verdict
11G	HCH	Horizontal	PASS

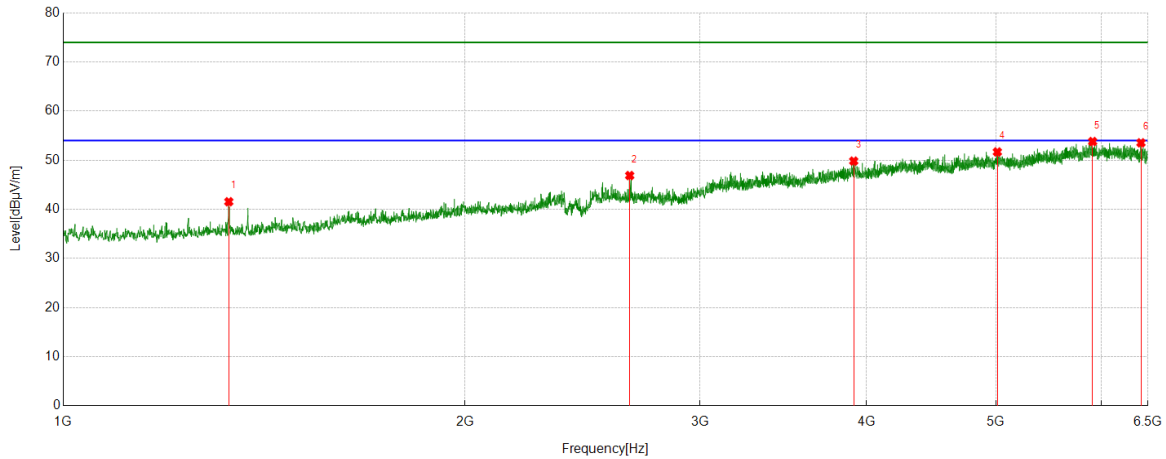


PK Result:

No.	Frequency	Reading Level	Correct Factor	Result	Limit	Margin	Remark
	[MHz]	[dBuV]	[dB/m]	[dBuV/m]	[dBuV/m]	[dB]	
1	2373.7967	44.26	4.82	49.08	74.00	-24.92	Horizontal
2	3777.1596	38.12	12.10	50.22	74.00	-23.78	Horizontal
3	4243.3429	37.63	13.96	51.59	74.00	-22.41	Horizontal
4	5703.7755	35.79	17.46	53.25	74.00	-20.75	Horizontal
5	6020.7526	35.61	17.96	53.57	74.00	-20.43	Horizontal
6	6202.2753	35.09	18.62	53.71	74.00	-20.29	Horizontal

- Note: 1. Measurement = Reading Level + Correct Factor,
Correct Factor = Antenna Factor + Loss (Cable + Filter) – Amplifier Gain.
2. If Peak Result complies with AV limit, AV Result is deemed to comply with AV limit.
3. Test setup: RBW: 1 MHz, VBW: 3 MHz, Sweep time: auto.
4. Peak: Peak detector.
5. For below 3GHz part, filter losses were only considered in the spurious frequency bands and the authorized band was not corrected for Band Reject Filter losses.
6. Only the worst case emission was recorded, if it complies with the limit, the other emissions deemed to comply with the limit.

Test Mode	Channel	Polarization	Verdict
11G	HCH	Vertical	PASS

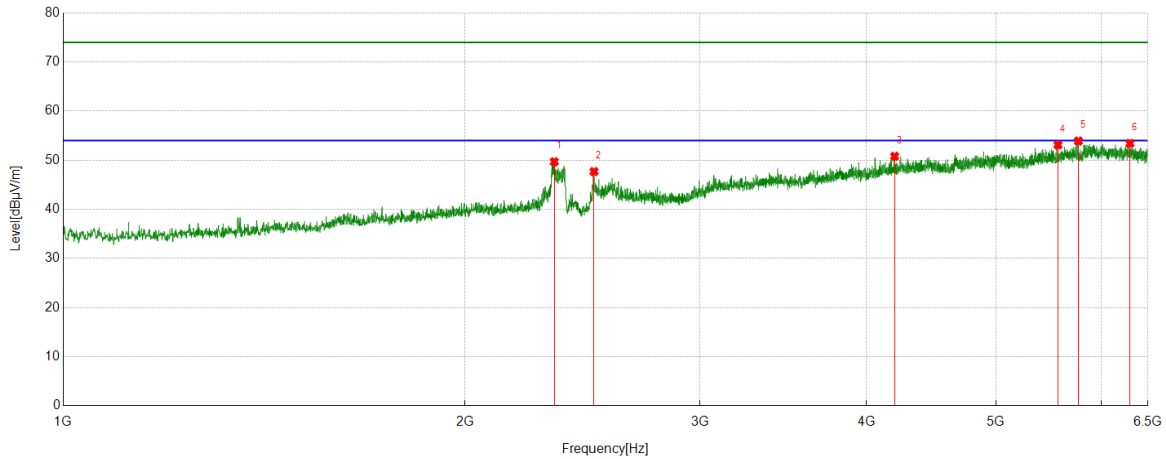


PK Result:

No.	Frequency	Reading Level	Correct Factor	Result	Limit	Margin	Remark
	[MHz]	[dBuV]	[dB/m]	[dBuV/m]	[dBuV/m]	[dB]	
1	1330.7288	42.63	-1.08	41.55	74.00	-32.45	Vertical
2	2657.7697	40.76	6.12	46.88	74.00	-27.12	Vertical
3	3911.9265	37.31	12.52	49.83	74.00	-24.17	Vertical
4	5012.064	36.29	15.40	51.69	74.00	-22.31	Vertical
5	5907.9885	35.68	18.13	53.81	74.00	-20.19	Vertical
6	6421.6152	35.00	18.55	53.55	74.00	-20.45	Vertical

- Note: 1. Measurement = Reading Level + Correct Factor,
Correct Factor = Antenna Factor + Loss (Cable + Filter) – Amplifier Gain.
2. If Peak Result complies with AV limit, AV Result is deemed to comply with AV limit.
3. Test setup: RBW: 1 MHz, VBW: 3 MHz, Sweep time: auto.
4. Peak: Peak detector.
5. For below 3GHz part, filter losses were only considered in the spurious frequency bands and the authorized band was not corrected for Band Reject Filter losses.
6. Only the worst case emission was recorded, if it complies with the limit, the other emissions deemed to comply with the limit.

Test Mode	Channel	Polarization	Verdict
11N HT20	LCH	Horizontal	PASS

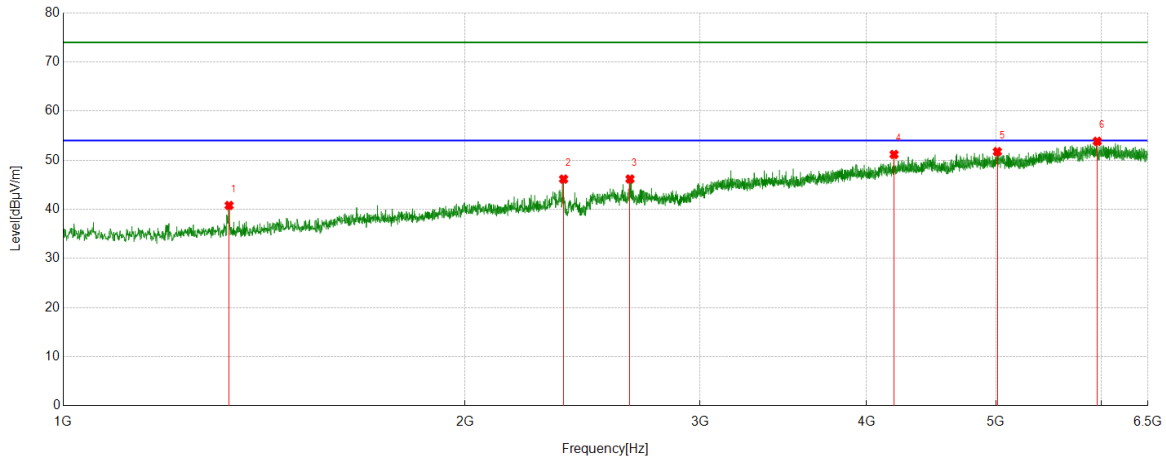


PK Result:

No.	Frequency	Reading Level	Correct Factor	Result	Limit	Margin	Remark
	[MHz]	[dBuV]	[dB/m]	[dBuV/m]	[dBuV/m]	[dB]	
1	2333.2292	44.66	5.03	49.69	74.00	-24.31	Horizontal
2	2498.9374	41.83	5.87	47.70	74.00	-26.30	Horizontal
3	4197.9622	37.72	13.07	50.79	74.00	-23.21	Horizontal
4	5564.8831	35.99	17.13	53.12	74.00	-20.88	Horizontal
5	5764.283	36.24	17.68	53.92	74.00	-20.08	Horizontal
6	6300.6001	34.64	18.78	53.42	74.00	-20.58	Horizontal

- Note: 1. Measurement = Reading Level + Correct Factor,
Correct Factor = Antenna Factor + Loss (Cable + Filter) – Amplifier Gain.
2. If Peak Result complies with AV limit, AV Result is deemed to comply with AV limit.
3. Test setup: RBW: 1 MHz, VBW: 3 MHz, Sweep time: auto.
4. Peak: Peak detector.
5. For below 3GHz part, filter losses were only considered in the spurious frequency bands and the authorized band was not corrected for Band Reject Filter losses.
6. Only the worst case emission was recorded, if it complies with the limit, the other emissions deemed to comply with the limit.

Test Mode	Channel	Polarization	Verdict
11N HT20	LCH	Vertical	PASS

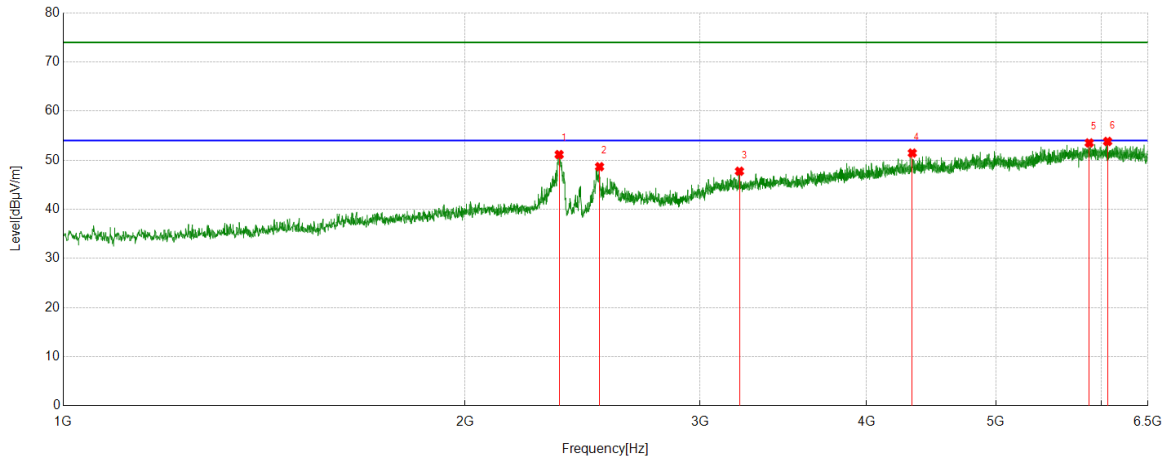


PK Result:

No.	Frequency	Reading Level	Correct Factor	Result	Limit	Margin	Remark
	[MHz]	[dBuV]	[dB/m]	[dBuV/m]	[dBuV/m]	[dB]	
1	1331.4164	41.88	-1.09	40.79	74.00	-33.21	Vertical
2	2371.0464	41.34	4.82	46.16	74.00	-27.84	Vertical
3	2659.1449	40.11	6.07	46.18	74.00	-27.82	Vertical
4	4193.8367	38.10	13.08	51.18	74.00	-22.82	Vertical
5	5012.064	36.35	15.40	51.75	74.00	-22.25	Vertical
6	5955.4319	35.33	18.52	53.85	74.00	-20.15	Vertical

- Note: 1. Measurement = Reading Level + Correct Factor,
Correct Factor = Antenna Factor + Loss (Cable + Filter) – Amplifier Gain.
2. If Peak Result complies with AV limit, AV Result is deemed to comply with AV limit.
3. Test setup: RBW: 1 MHz, VBW: 3 MHz, Sweep time: auto.
4. Peak: Peak detector.
5. For below 3GHz part, filter losses were only considered in the spurious frequency bands and the authorized band was not corrected for Band Reject Filter losses.
6. Only the worst case emission was recorded, if it complies with the limit, the other emissions deemed to comply with the limit.

Test Mode	Channel	Polarization	Verdict
11N HT20	MCH	Horizontal	PASS

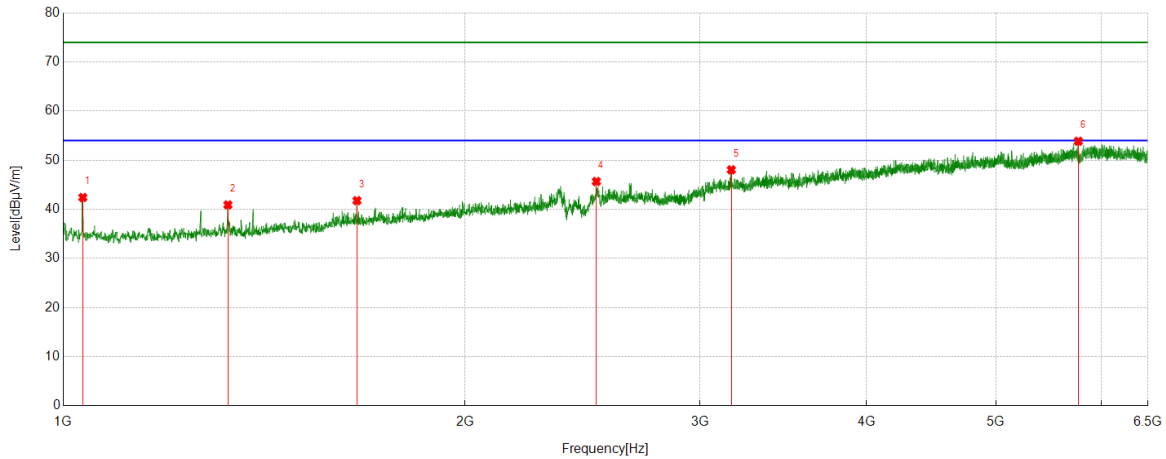


PK Result:

No.	Frequency	Reading Level	Correct Factor	Result	Limit	Margin	Remark
	[MHz]	[dBuV]	[dB/m]	[dBuV/m]	[dBuV/m]	[dB]	
1	2353.1691	46.38	4.77	51.15	74.00	-22.85	Horizontal
2	2523.0029	43.03	5.65	48.68	74.00	-25.32	Horizontal
3	3211.964	38.44	9.32	47.76	74.00	-26.24	Horizontal
4	4327.916	37.81	13.65	51.46	74.00	-22.54	Horizontal
5	5873.6092	35.71	17.82	53.53	74.00	-20.47	Horizontal
6	6062.6953	35.88	17.95	53.83	74.00	-20.17	Horizontal

- Note: 1. Measurement = Reading Level + Correct Factor,
Correct Factor = Antenna Factor + Loss (Cable + Filter) – Amplifier Gain.
2. If Peak Result complies with AV limit, AV Result is deemed to comply with AV limit.
3. Test setup: RBW: 1 MHz, VBW: 3 MHz, Sweep time: auto.
4. Peak: Peak detector.
5. For below 3GHz part, filter losses were only considered in the spurious frequency bands and the authorized band was not corrected for Band Reject Filter losses.
6. Only the worst case emission was recorded, if it complies with the limit, the other emissions deemed to comply with the limit.

Test Mode	Channel	Polarization	Verdict
11N HT20	MCH	Vertical	PASS

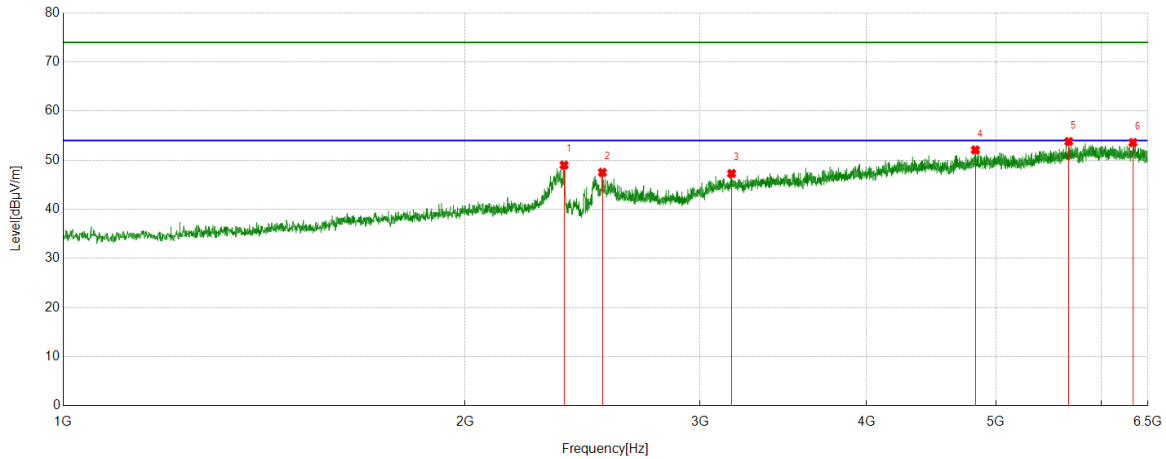


PK Result:

No.	Frequency	Reading Level	Correct Factor	Result	Limit	Margin	Remark
	[MHz]	[dBuV]	[dB/m]	[dBuV/m]	[dBuV/m]	[dB]	
1	1034.3793	43.92	-1.51	42.41	74.00	-31.59	Vertical
2	1328.6661	42.00	-1.09	40.91	74.00	-33.09	Vertical
3	1660.0825	40.74	1.03	41.77	74.00	-32.23	Vertical
4	2509.2512	39.76	5.91	45.67	74.00	-28.33	Vertical
5	3167.2709	38.69	9.36	48.05	74.00	-25.95	Vertical
6	5764.283	36.19	17.68	53.87	74.00	-20.13	Vertical

- Note: 1. Measurement = Reading Level + Correct Factor,
Correct Factor = Antenna Factor + Loss (Cable + Filter) – Amplifier Gain.
2. If Peak Result complies with AV limit, AV Result is deemed to comply with AV limit.
3. Test setup: RBW: 1 MHz, VBW: 3 MHz, Sweep time: auto.
4. Peak: Peak detector.
5. For below 3GHz part, filter losses were only considered in the spurious frequency bands and the authorized band was not corrected for Band Reject Filter losses.
6. Only the worst case emission was recorded, if it complies with the limit, the other emissions deemed to comply with the limit.

Test Mode	Channel	Polarization	Verdict
11N HT20	HCH	Horizontal	PASS

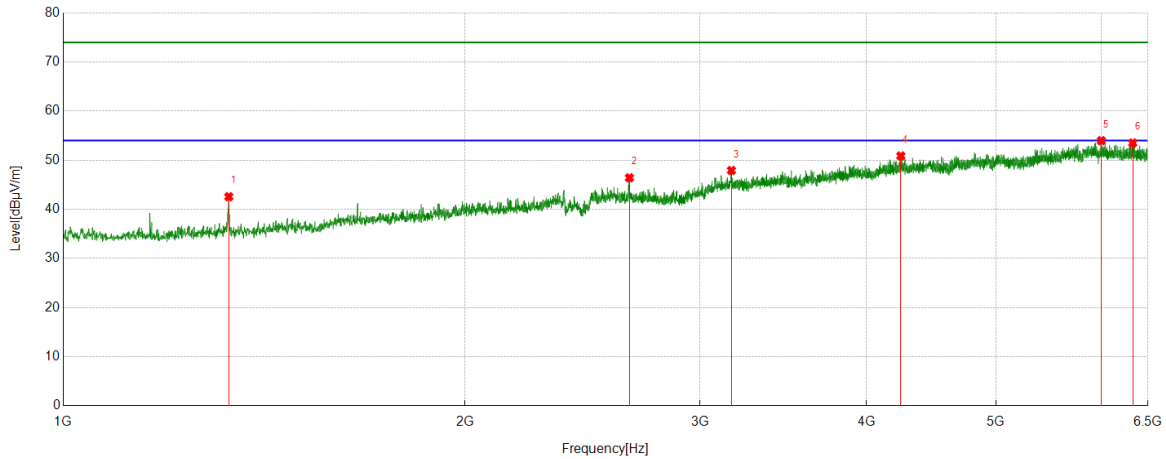


PK Result:

No.	Frequency	Reading Level	Correct Factor	Result	Limit	Margin	Remark
	[MHz]	[dBuV]	[dB/m]	[dBuV/m]	[dBuV/m]	[dB]	
1	2373.1091	44.18	4.82	49.00	74.00	-25.00	Horizontal
2	2535.3794	41.73	5.79	47.52	74.00	-26.48	Horizontal
3	3168.6461	37.93	9.36	47.29	74.00	-26.71	Horizontal
4	4825.7282	36.51	15.58	52.09	74.00	-21.91	Horizontal
5	5669.3962	36.52	17.28	53.80	74.00	-20.20	Horizontal
6	6334.2918	34.62	18.99	53.61	74.00	-20.39	Horizontal

- Note: 1. Measurement = Reading Level + Correct Factor,
Correct Factor = Antenna Factor + Loss (Cable + Filter) – Amplifier Gain.
2. If Peak Result complies with AV limit, AV Result is deemed to comply with AV limit.
3. Test setup: RBW: 1 MHz, VBW: 3 MHz, Sweep time: auto.
4. Peak: Peak detector.
5. For below 3GHz part, filter losses were only considered in the spurious frequency bands and the authorized band was not corrected for Band Reject Filter losses.
6. Only the worst case emission was recorded, if it complies with the limit, the other emissions deemed to comply with the limit.

Test Mode	Channel	Polarization	Verdict
11N HT20	HCH	Vertical	PASS

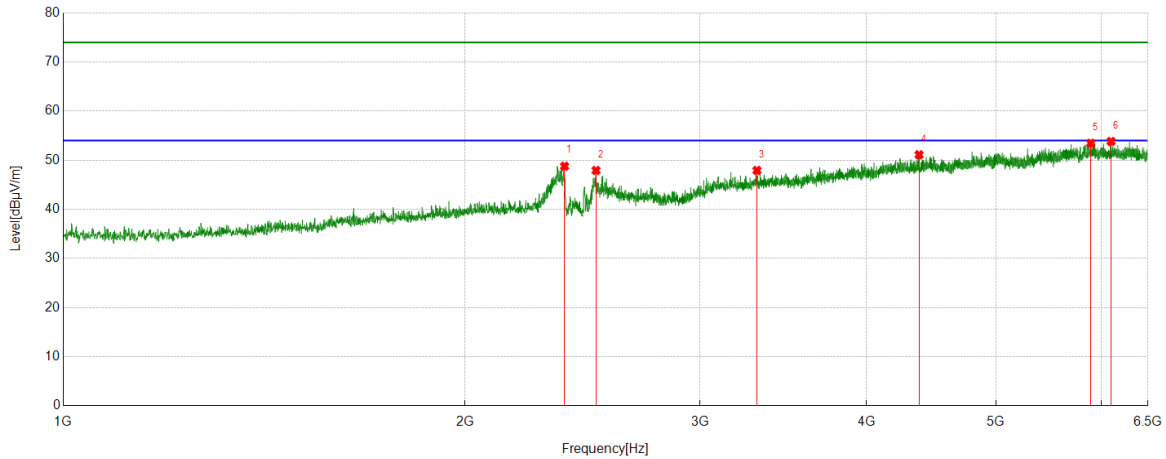


PK Result:

No.	Frequency	Reading Level	Correct Factor	Result	Limit	Margin	Remark
	[MHz]	[dBuV]	[dB/m]	[dBuV/m]	[dBuV/m]	[dB]	
1	1330.7288	43.65	-1.08	42.57	74.00	-31.43	Vertical
2	2656.3945	40.24	6.19	46.43	74.00	-27.57	Vertical
3	3167.9585	38.56	9.36	47.92	74.00	-26.08	Vertical
4	4243.3429	36.92	13.96	50.88	74.00	-23.12	Vertical
5	5997.3747	35.72	18.26	53.98	74.00	-20.02	Vertical
6	6331.5414	34.44	19.07	53.51	74.00	-20.49	Vertical

- Note: 1. Measurement = Reading Level + Correct Factor,
Correct Factor = Antenna Factor + Loss (Cable + Filter) – Amplifier Gain.
2. If Peak Result complies with AV limit, AV Result is deemed to comply with AV limit.
3. Test setup: RBW: 1 MHz, VBW: 3 MHz, Sweep time: auto.
4. Peak: Peak detector.
5. For below 3GHz part, filter losses were only considered in the spurious frequency bands and the authorized band was not corrected for Band Reject Filter losses.
6. Only the worst case emission was recorded, if it complies with the limit, the other emissions deemed to comply with the limit.

Test Mode	Channel	Polarization	Verdict
11N HT40	LCH	Horizontal	PASS

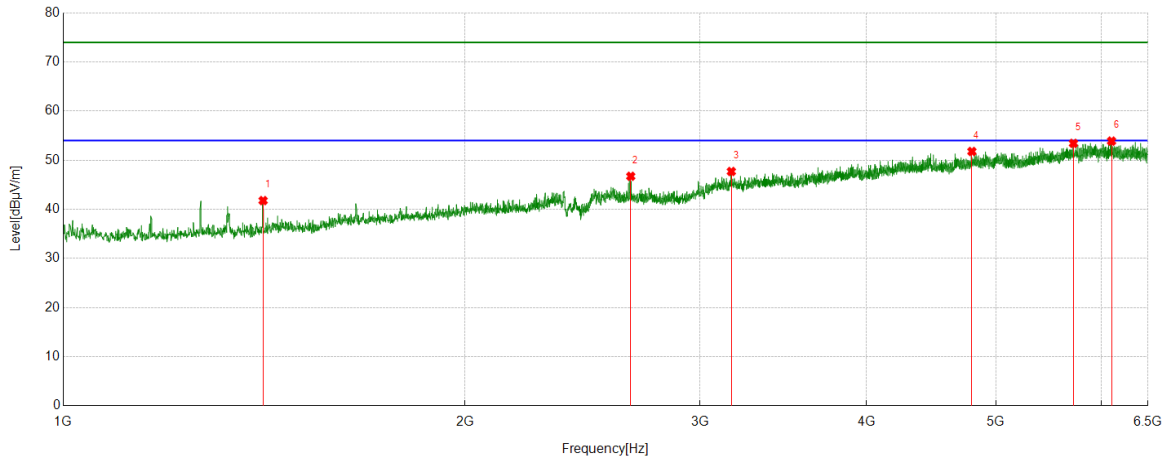


PK Result:

No.	Frequency	Reading Level	Correct Factor	Result	Limit	Margin	Remark
	[MHz]	[dBuV]	[dB/m]	[dBuV/m]	[dBuV/m]	[dB]	
1	2375.1719	43.96	4.83	48.79	74.00	-25.21	Horizontal
2	2507.876	42.02	5.91	47.93	74.00	-26.07	Horizontal
3	3310.2888	37.35	10.58	47.93	74.00	-26.07	Horizontal
4	4378.7974	37.48	13.63	51.11	74.00	-22.89	Horizontal
5	5888.7361	35.53	17.94	53.47	74.00	-20.53	Horizontal
6	6098.4498	35.49	18.34	53.83	74.00	-20.17	Horizontal

- Note: 1. Measurement = Reading Level + Correct Factor,
Correct Factor = Antenna Factor + Loss (Cable + Filter) – Amplifier Gain.
2. If Peak Result complies with AV limit, AV Result is deemed to comply with AV limit.
3. Test setup: RBW: 1 MHz, VBW: 3 MHz, Sweep time: auto.
4. Peak: Peak detector.
5. For below 3GHz part, filter losses were only considered in the spurious frequency bands and the authorized band was not corrected for Band Reject Filter losses.
6. Only the worst case emission was recorded, if it complies with the limit, the other emissions deemed to comply with the limit.

Test Mode	Channel	Polarization	Verdict
11N HT40	LCH	Vertical	PASS

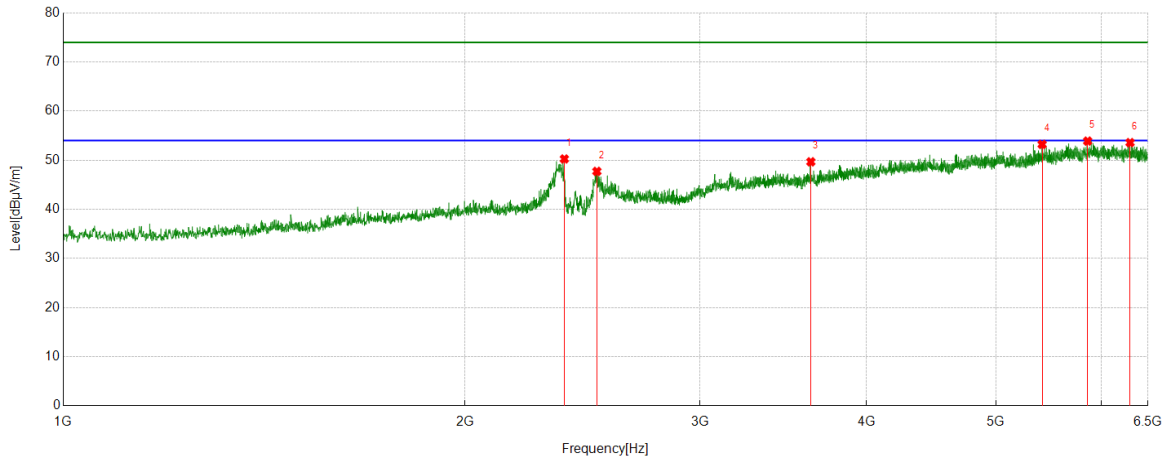


PK Result:

No.	Frequency	Reading Level	Correct Factor	Result	Limit	Margin	Remark
	[MHz]	[dBuV]	[dB/m]	[dBuV/m]	[dBuV/m]	[dB]	
1	1411.864	43.06	-1.28	41.78	74.00	-32.22	Vertical
2	2662.5828	40.65	6.08	46.73	74.00	-27.27	Vertical
3	3167.2709	38.35	9.36	47.71	74.00	-26.29	Vertical
4	4796.8496	36.39	15.40	51.79	74.00	-22.21	Vertical
5	5715.4644	35.87	17.57	53.44	74.00	-20.56	Vertical
6	6103.9505	35.69	18.21	53.90	74.00	-20.10	Vertical

- Note: 1. Measurement = Reading Level + Correct Factor,
Correct Factor = Antenna Factor + Loss (Cable + Filter) – Amplifier Gain.
2. If Peak Result complies with AV limit, AV Result is deemed to comply with AV limit.
3. Test setup: RBW: 1 MHz, VBW: 3 MHz, Sweep time: auto.
4. Peak: Peak detector.
5. For below 3GHz part, filter losses were only considered in the spurious frequency bands and the authorized band was not corrected for Band Reject Filter losses.
6. Only the worst case emission was recorded, if it complies with the limit, the other emissions deemed to comply with the limit.

Test Mode	Channel	Polarization	Verdict
11N HT40	MCH	Horizontal	PASS

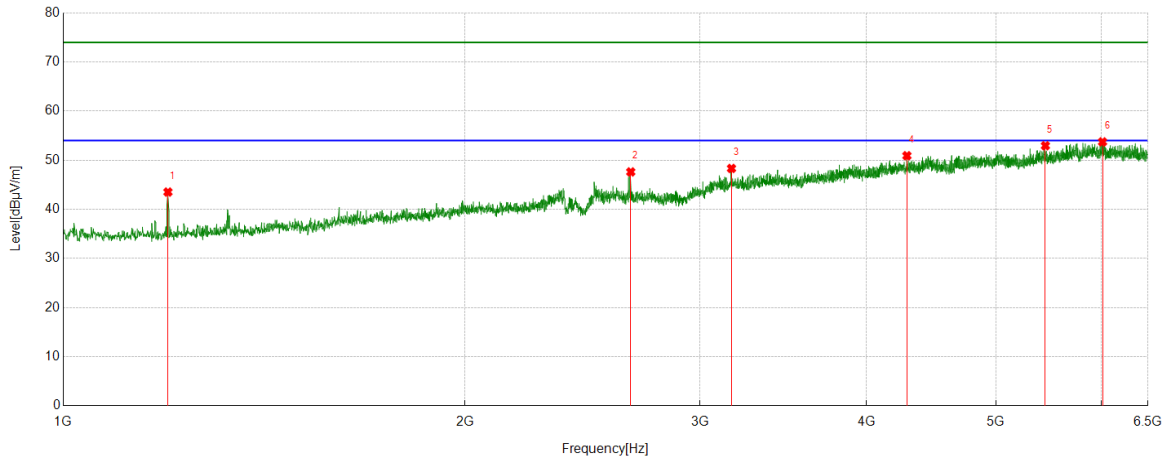


PK Result:

No.	Frequency	Reading Level	Correct Factor	Result	Limit	Margin	Remark
	[MHz]	[dBuV]	[dB/m]	[dBuV/m]	[dBuV/m]	[dB]	
1	2374.4843	45.44	4.82	50.26	74.00	-23.74	Horizontal
2	2511.3139	41.85	5.88	47.73	74.00	-26.27	Horizontal
3	3632.7666	38.46	11.22	49.68	74.00	-24.32	Horizontal
4	5414.9894	36.20	17.03	53.23	74.00	-20.77	Horizontal
5	5857.1071	36.04	17.86	53.90	74.00	-20.10	Horizontal
6	6301.9752	34.80	18.79	53.59	74.00	-20.41	Horizontal

- Note: 1. Measurement = Reading Level + Correct Factor,
Correct Factor = Antenna Factor + Loss (Cable + Filter) – Amplifier Gain.
2. If Peak Result complies with AV limit, AV Result is deemed to comply with AV limit.
3. Test setup: RBW: 1 MHz, VBW: 3 MHz, Sweep time: auto.
4. Peak: Peak detector.
5. For below 3GHz part, filter losses were only considered in the spurious frequency bands and the authorized band was not corrected for Band Reject Filter losses.
6. Only the worst case emission was recorded, if it complies with the limit, the other emissions deemed to comply with the limit.

Test Mode	Channel	Polarization	Verdict
11N HT40	MCH	Vertical	PASS

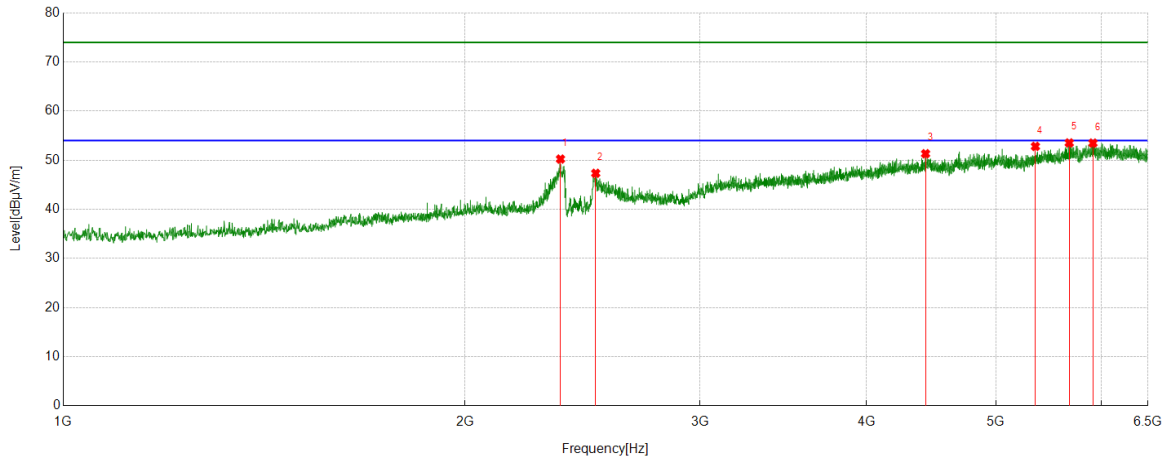


PK Result:

No.	Frequency	Reading Level	Correct Factor	Result	Limit	Margin	Remark
	[MHz]	[dBuV]	[dB/m]	[dBuV/m]	[dBuV/m]	[dB]	
1	1198.0248	45.77	-2.25	43.52	74.00	-30.48	Vertical
2	2662.5828	41.54	6.08	47.62	74.00	-26.38	Vertical
3	3167.9585	38.97	9.36	48.33	74.00	-25.67	Vertical
4	4288.0360	37.36	13.56	50.92	74.00	-23.08	Vertical
5	5445.2432	35.49	17.47	52.96	74.00	-21.04	Vertical
6	6009.7512	35.60	18.14	53.74	74.00	-20.26	Vertical

- Note: 1. Measurement = Reading Level + Correct Factor,
Correct Factor = Antenna Factor + Loss (Cable + Filter) – Amplifier Gain.
2. If Peak Result complies with AV limit, AV Result is deemed to comply with AV limit.
3. Test setup: RBW: 1 MHz, VBW: 3 MHz, Sweep time: auto.
4. Peak: Peak detector.
5. For below 3GHz part, filter losses were only considered in the spurious frequency bands and the authorized band was not corrected for Band Reject Filter losses.
6. Only the worst case emission was recorded, if it complies with the limit, the other emissions deemed to comply with the limit.

Test Mode	Channel	Polarization	Verdict
11N HT40	HCH	Horizontal	PASS

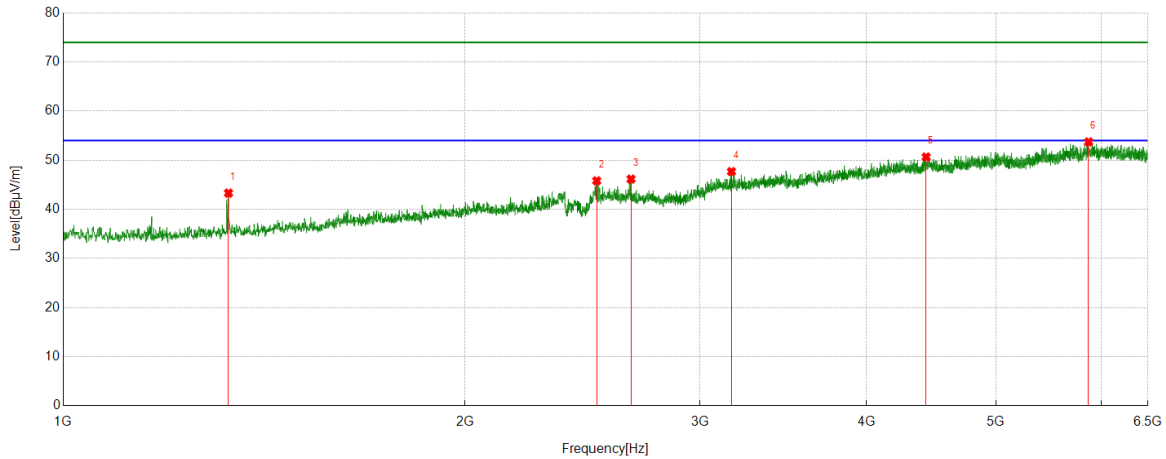


PK Result:

No.	Frequency	Reading Level	Correct Factor	Result	Limit	Margin	Remark
	[MHz]	[dBuV]	[dB/m]	[dBuV/m]	[dBuV/m]	[dB]	
1	2358.6698	45.46	4.78	50.24	74.00	-23.76	Horizontal
2	2506.5008	41.44	5.90	47.34	74.00	-26.66	Horizontal
3	4428.3035	37.46	13.87	51.33	74.00	-22.67	Horizontal
4	5352.4191	36.71	16.11	52.82	74.00	-21.18	Horizontal
5	5674.2093	36.19	17.34	53.53	74.00	-20.47	Horizontal
6	5911.4264	35.24	18.25	53.49	74.00	-20.51	Horizontal

- Note: 1. Measurement = Reading Level + Correct Factor,
Correct Factor = Antenna Factor + Loss (Cable + Filter) – Amplifier Gain.
2. If Peak Result complies with AV limit, AV Result is deemed to comply with AV limit.
3. Test setup: RBW: 1 MHz, VBW: 3 MHz, Sweep time: auto.
4. Peak: Peak detector.
5. For below 3GHz part, filter losses were only considered in the spurious frequency bands and the authorized band was not corrected for Band Reject Filter losses.
6. Only the worst case emission was recorded, if it complies with the limit, the other emissions deemed to comply with the limit.

Test Mode	Channel	Polarization	Verdict
11N HT40	HCH	Vertical	PASS



PK Result:

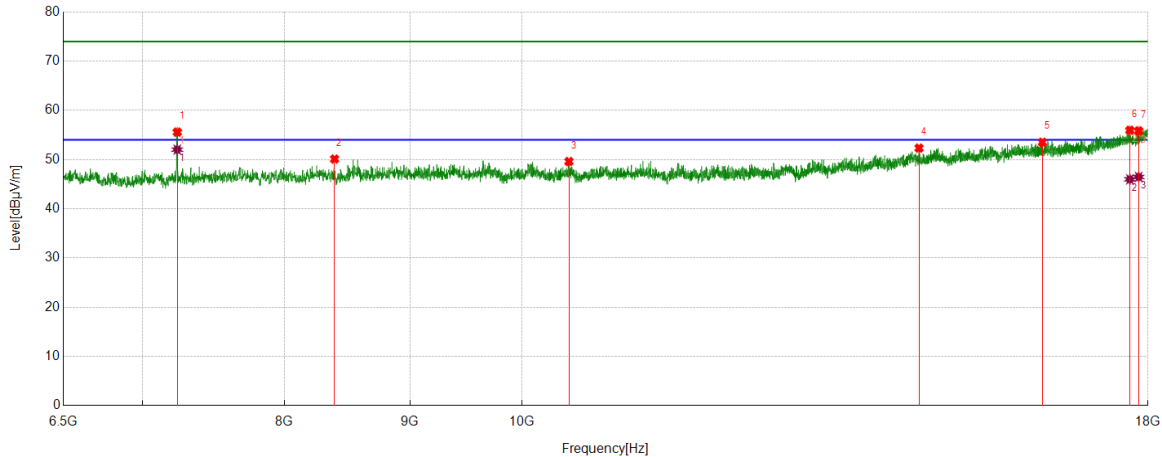
No.	Frequency	Reading Level	Correct Factor	Result	Limit	Margin	Remark
	[MHz]	[dBuV]	[dB/m]	[dBuV/m]	[dBuV/m]	[dB]	
1	1330.0413	44.38	-1.07	43.31	74.00	-30.69	Vertical
2	2510.6263	39.91	5.90	45.81	74.00	-28.19	Vertical
3	2663.958	40.05	6.11	46.16	74.00	-27.84	Vertical
4	3167.9585	38.33	9.36	47.69	74.00	-26.31	Vertical
5	4432.4291	36.58	14.08	50.66	74.00	-23.34	Vertical
6	5867.4209	35.85	17.88	53.73	74.00	-20.27	Vertical

- Note: 1. Measurement = Reading Level + Correct Factor,
Correct Factor = Antenna Factor + Loss (Cable + Filter) – Amplifier Gain.
2. If Peak Result complies with AV limit, AV Result is deemed to comply with AV limit.
3. Test setup: RBW: 1 MHz, VBW: 3 MHz, Sweep time: auto.
4. Peak: Peak detector.
5. For below 3GHz part, filter losses were only considered in the spurious frequency bands and the authorized band was not corrected for Band Reject Filter losses.
6. Only the worst case emission was recorded, if it complies with the limit, the other emissions deemed to comply with the limit.

Part 2: 6.5GHz~18GHz

HARMONICS AND SPURIOUS EMISSIONS

Test Mode	Channel	Polarization	Verdict
11B	LCH	Horizontal	PASS



PK Result:

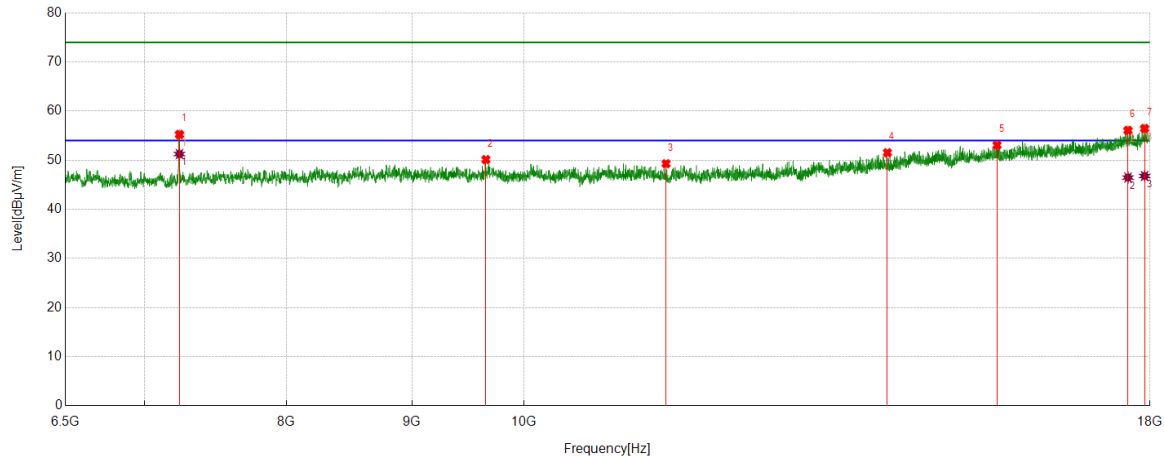
No.	Frequency	Reading Level	Correct Factor	Result	Limit	Margin	Remark
	[MHz]	[dBuV]	[dB/m]	[dBuV/m]	[dBuV/m]	[dB]	
1	7234.6543	51.75	3.84	55.59	74.00	-18.41	Horizontal
2	8386.2358	44.21	5.90	50.11	74.00	-23.89	Horizontal
3	10450.7438	42.97	6.64	49.61	74.00	-24.39	Horizontal
4	14517.9397	39.65	12.68	52.33	74.00	-21.67	Horizontal
5	16300.6626	38.44	15.09	53.53	74.00	-20.47	Horizontal
6	17696.6496	37.73	18.24	55.97	74.00	-18.03	Horizontal
7	17843.2929	36.72	19.10	55.82	74.00	-18.18	Horizontal

AV Result:

No.	Frequency	Reading Level	Correct Factor	Result	Limit	Margin	Remark
	[MHz]	[dBuV]	[dB/m]	[dBuV/m]	[dBuV/m]	[dB]	
1	7234.6543	48.19	3.84	52.03	54.00	-1.97	Horizontal
2	17696.6496	27.75	18.24	45.99	54.00	-8.01	Horizontal
3	17843.2929	27.37	19.10	46.47	54.00	-7.53	Horizontal

- Note: 1. Measurement = Reading Level + Correct Factor,
Correct Factor = Antenna Factor + Loss (Cable + Filter) – Amplifier Gain.
- If Peak Result complies with AV limit, AV Result is deemed to comply with AV limit.
 - Peak detector: RBW: 1 MHz, VBW: 3 MHz.
 - Average detector: RBW: 1 MHz, VBW: 1/T MHz(refer to clause 7.1.).
 - For above 3GHz part, filter losses were only considered in the spurious frequency bands and the authorized band was not corrected for HPF losses.
 - Only the worst case emission was recorded, if it complies with the limit, the other emissions deemed to comply with the limit.

Test Mode	Channel	Polarization	Verdict
11B	LCH	Vertical	PASS



PK Result:

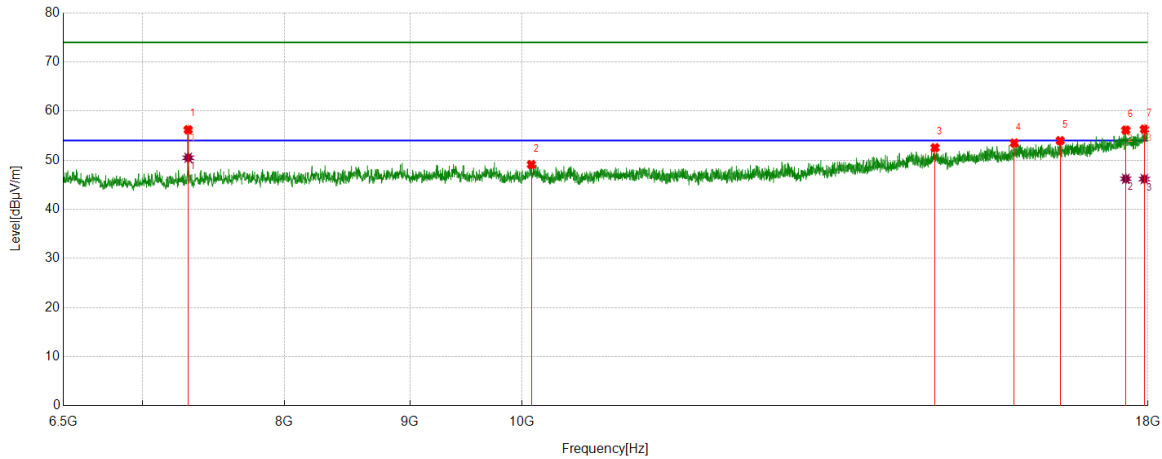
No.	Frequency	Reading Level	Correct Factor	Result	Limit	Margin	Remark
	[MHz]	[dBuV]	[dB/m]	[dBuV/m]	[dBuV/m]	[dB]	
1	7236.092	51.45	3.81	55.26	74.00	-18.74	Vertical
2	9648.5186	43.72	6.41	50.13	74.00	-23.87	Vertical
3	11426.9284	41.81	7.48	49.29	74.00	-24.71	Vertical
4	14066.5083	39.60	11.94	51.54	74.00	-22.46	Vertical
5	15591.8865	39.42	13.65	53.07	74.00	-20.93	Vertical
6	17631.954	38.04	18.04	56.08	74.00	-17.92	Vertical
7	17909.4262	37.22	19.25	56.47	74.00	-17.53	Vertical

AV Result:

No.	Frequency	Reading Level	Correct Factor	Result	Limit	Margin	Remark
	[MHz]	[dBuV]	[dB/m]	[dBuV/m]	[dBuV/m]	[dB]	
1	7236.092	47.45	3.81	51.26	54.00	-2.74	Vertical
2	17631.954	28.43	18.04	46.47	54.00	-7.53	Vertical
3	17909.4262	27.54	19.25	46.79	54.00	-7.21	Vertical

- Note: 1. Measurement = Reading Level + Correct Factor,
Correct Factor = Antenna Factor + Loss (Cable + Filter) – Amplifier Gain.
- If Peak Result complies with AV limit, AV Result is deemed to comply with AV limit.
 - Peak detector: RBW: 1 MHz, VBW: 3 MHz.
 - Average detector: RBW: 1 MHz, VBW: 1/T MHz(refer to clause 7.1.).
 - For above 3GHz part, filter losses were only considered in the spurious frequency bands and the authorized band was not corrected for HPF losses.
 - Only the worst case emission was recorded, if it complies with the limit, the other emissions deemed to comply with the limit.

Test Mode	Channel	Polarization	Verdict
11B	MCH	Horizontal	PASS



PK Result:

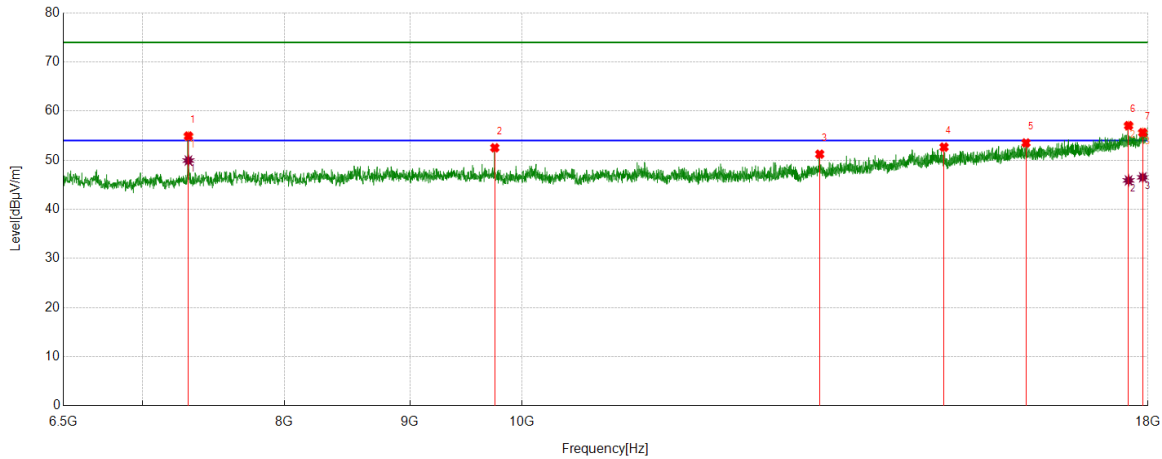
No.	Frequency	Reading Level	Correct Factor	Result	Limit	Margin	Remark
	[MHz]	[dBuV]	[dB/m]	[dBuV/m]	[dBuV/m]	[dB]	
1	7309.4137	52.36	3.85	56.21	74.00	-17.79	Horizontal
2	10088.4486	42.57	6.55	49.12	74.00	-24.88	Horizontal
3	14737.9047	39.67	12.88	52.55	74.00	-21.45	Horizontal
4	15876.5471	38.79	14.71	53.50	74.00	-20.50	Horizontal
5	16575.2594	38.14	15.85	53.99	74.00	-20.01	Horizontal
6	17629.0786	38.09	18.05	56.14	74.00	-17.86	Horizontal
7	17939.6175	36.88	19.45	56.33	74.00	-17.67	Horizontal

AV Result:

No.	Frequency	Reading Level	Correct Factor	Result	Limit	Margin	Remark
	[MHz]	[dBuV]	[dB/m]	[dBuV/m]	[dBuV/m]	[dB]	
1	7309.4137	46.66	3.85	50.51	54.00	-3.49	Horizontal
2	17629.0786	28.17	18.05	46.22	54.00	-7.78	Horizontal
3	17939.6175	26.72	19.45	46.17	54.00	-7.83	Horizontal

- Note: 1. Measurement = Reading Level + Correct Factor,
Correct Factor = Antenna Factor + Loss (Cable + Filter) – Amplifier Gain.
- If Peak Result complies with AV limit, AV Result is deemed to comply with AV limit.
 - Peak detector: RBW: 1 MHz, VBW: 3 MHz.
 - Average detector: RBW: 1 MHz, VBW: 1/T MHz(refer to clause 7.1.).
 - For above 3GHz part, filter losses were only considered in the spurious frequency bands and the authorized band was not corrected for HPF losses.
 - Only the worst case emission was recorded, if it complies with the limit, the other emissions deemed to comply with the limit.

Test Mode	Channel	Polarization	Verdict
11B	MCH	Vertical	PASS



PK Result:

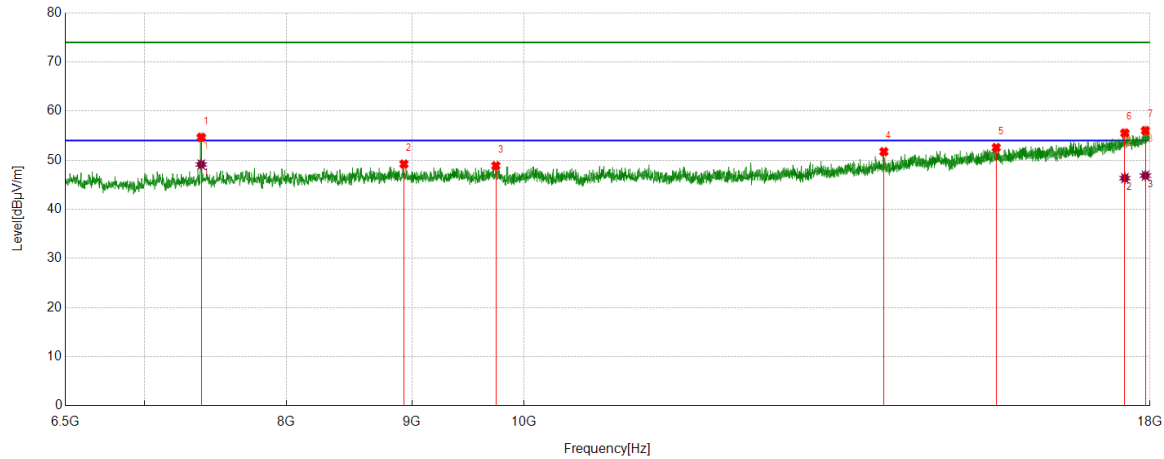
No.	Frequency	Reading Level	Correct Factor	Result	Limit	Margin	Remark
	[MHz]	[dBuV]	[dB/m]	[dBuV/m]	[dBuV/m]	[dB]	
1	7310.8514	51.08	3.85	54.93	74.00	-19.07	Vertical
2	9747.7185	46.06	6.48	52.54	74.00	-21.46	Vertical
3	13225.4657	41.21	10.03	51.24	74.00	-22.76	Vertical
4	14862.9829	39.82	12.85	52.67	74.00	-21.33	Vertical
5	16051.944	39.03	14.49	53.52	74.00	-20.48	Vertical
6	17675.0844	38.95	18.10	57.05	74.00	-16.95	Vertical
7	17912.3015	36.36	19.28	55.64	74.00	-18.36	Vertical

AV Result:

No.	Frequency	Reading Level	Correct Factor	Result	Limit	Margin	Remark
	[MHz]	[dBuV]	[dB/m]	[dBuV/m]	[dBuV/m]	[dB]	
1	7310.8514	46.09	3.85	49.94	54.00	-4.06	Vertical
2	17675.0844	27.79	18.10	45.89	54.00	-8.11	Vertical
3	17912.3015	27.24	19.28	46.52	54.00	-7.48	Vertical

- Note: 1. Measurement = Reading Level + Correct Factor,
Correct Factor = Antenna Factor + Loss (Cable + Filter) – Amplifier Gain.
- If Peak Result complies with AV limit, AV Result is deemed to comply with AV limit.
 - Peak detector: RBW: 1 MHz, VBW: 3 MHz.
 - Average detector: RBW: 1 MHz, VBW: 1/T MHz(refer to clause 7.1.).
 - For above 3GHz part, filter losses were only considered in the spurious frequency bands and the authorized band was not corrected for HPF losses.
 - Only the worst case emission was recorded, if it complies with the limit, the other emissions deemed to comply with the limit.

Test Mode	Channel	Polarization	Verdict
11B	HCH	Horizontal	PASS



PK Result:

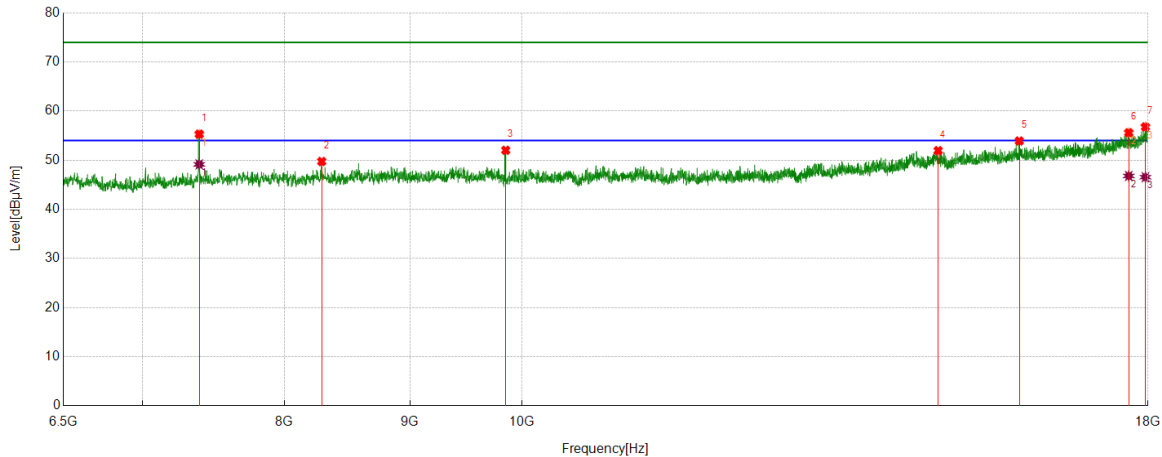
No.	Frequency	Reading Level	Correct Factor	Result	Limit	Margin	Remark
	[MHz]	[dBuV]	[dB/m]	[dBuV/m]	[dBuV/m]	[dB]	
1	7385.6107	50.51	4.16	54.67	74.00	-19.33	Horizontal
2	8933.9917	43.16	6.06	49.22	74.00	-24.78	Horizontal
3	9739.0924	42.34	6.53	48.87	74.00	-25.13	Horizontal
4	14020.5026	39.91	11.83	51.74	74.00	-22.26	Horizontal
5	15580.385	38.90	13.68	52.58	74.00	-21.42	Horizontal
6	17580.1975	37.59	17.95	55.54	74.00	-18.46	Horizontal
7	17923.803	36.68	19.36	56.04	74.00	-17.96	Horizontal

AV Result:

No.	Frequency	Reading Level	Correct Factor	Result	Limit	Margin	Remark
	[MHz]	[dBuV]	[dB/m]	[dBuV/m]	[dBuV/m]	[dB]	
1	7385.6107	44.97	4.16	49.13	54.00	-4.87	Horizontal
2	17580.1975	28.40	17.95	46.35	54.00	-7.65	Horizontal
3	17923.803	27.51	19.36	46.87	54.00	-7.13	Horizontal

- Note: 1. Measurement = Reading Level + Correct Factor,
Correct Factor = Antenna Factor + Loss (Cable + Filter) – Amplifier Gain.
2. If Peak Result complies with AV limit, AV Result is deemed to comply with AV limit.
3. Peak detector: RBW: 1 MHz, VBW: 3 MHz.
4. Average detector: RBW: 1 MHz, VBW: 1/T MHz(refer to clause 7.1.).
5. For above 3GHz part, filter losses were only considered in the spurious frequency bands and the authorized band was not corrected for HPF losses.
6. Only the worst case emission was recorded, if it complies with the limit, the other emissions deemed to comply with the limit.

Test Mode	Channel	Polarization	Verdict
11B	HCH	Vertical	PASS



PK Result:

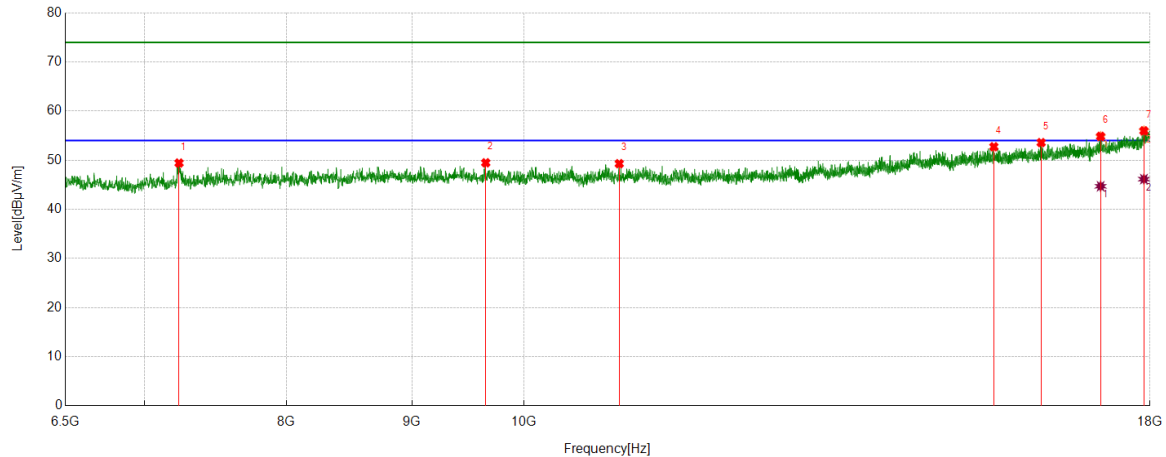
No.	Frequency	Reading Level	Correct Factor	Result	Limit	Margin	Remark
	[MHz]	[dBuV]	[dB/m]	[dBuV/m]	[dBuV/m]	[dB]	
1	7385.6107	51.16	4.16	55.32	74.00	-18.68	Vertical
2	8285.5982	43.52	6.23	49.75	74.00	-24.25	Vertical
3	9848.356	45.52	6.51	52.03	74.00	-21.97	Vertical
4	14781.0351	39.12	12.84	51.96	74.00	-22.04	Vertical
5	15951.3064	39.47	14.46	53.93	74.00	-20.07	Vertical
6	17677.9597	37.51	18.10	55.61	74.00	-18.39	Vertical
7	17956.8696	37.20	19.59	56.79	74.00	-17.21	Vertical

AV Result:

No.	Frequency	Reading Level	Correct Factor	Result	Limit	Margin	Remark
	[MHz]	[dBuV]	[dB/m]	[dBuV/m]	[dBuV/m]	[dB]	
1	7385.6107	45.00	4.16	49.16	54.00	-4.84	Vertical
2	17677.9597	28.70	18.10	46.80	54.00	-7.20	Vertical
3	17956.8696	26.96	19.59	46.55	54.00	-7.45	Vertical

- Note: 1. Measurement = Reading Level + Correct Factor,
Correct Factor = Antenna Factor + Loss (Cable + Filter) – Amplifier Gain.
- If Peak Result complies with AV limit, AV Result is deemed to comply with AV limit.
 - Peak detector: RBW: 1 MHz, VBW: 3 MHz.
 - Average detector: RBW: 1 MHz, VBW: 1/T MHz(refer to clause 7.1.).
 - For above 3GHz part, filter losses were only considered in the spurious frequency bands and the authorized band was not corrected for HPF losses.
 - Only the worst case emission was recorded, if it complies with the limit, the other emissions deemed to comply with the limit.

Test Mode	Channel	Polarization	Verdict
11G	LCH	Horizontal	PASS


PK Result:

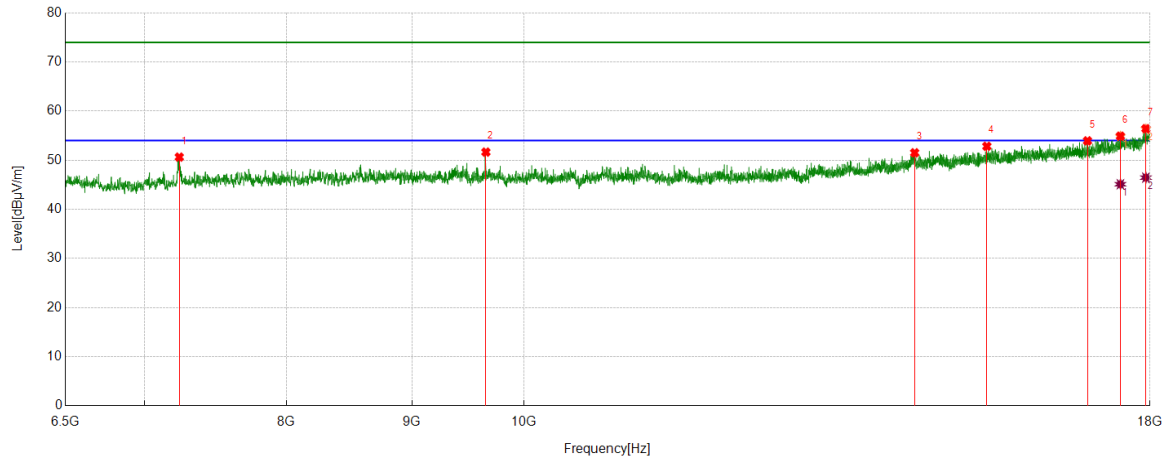
No.	Frequency	Reading Level	Correct Factor	Result	Limit	Margin	Remark
	[MHz]	[dBuV]	[dB/m]	[dBuV/m]	[dBuV/m]	[dB]	
1	7233.2167	45.57	3.86	49.43	74.00	-24.57	Horizontal
2	9647.0809	43.09	6.39	49.48	74.00	-24.52	Horizontal
3	10935.2419	42.03	7.27	49.30	74.00	-24.70	Horizontal
4	15545.8807	38.97	13.78	52.75	74.00	-21.25	Horizontal
5	16251.7815	38.22	15.37	53.59	74.00	-20.41	Horizontal
6	17184.8356	38.27	16.59	54.86	74.00	-19.14	Horizontal
7	17897.9247	36.79	19.20	55.99	74.00	-18.01	Horizontal

AV Result:

No.	Frequency	Reading Level	Correct Factor	Result	Limit	Margin	Remark
	[MHz]	[dBuV]	[dB/m]	[dBuV/m]	[dBuV/m]	[dB]	
1	17184.8356	28.11	16.59	44.70	54.00	-9.30	Horizontal
2	17897.9247	26.95	19.20	46.15	54.00	-7.85	Horizontal

- Note: 1. Measurement = Reading Level + Correct Factor,
 Correct Factor = Antenna Factor + Loss (Cable + Filter) – Amplifier Gain.
- If Peak Result complies with AV limit, AV Result is deemed to comply with AV limit.
 - Peak detector: RBW: 1 MHz, VBW: 3 MHz.
 - Average detector: RBW: 1 MHz, VBW: 1/T MHz(refer to clause 7.1.).
 - For above 3GHz part, filter losses were only considered in the spurious frequency bands and the authorized band was not corrected for HPF losses.
 - Only the worst case emission was recorded, if it complies with the limit, the other emissions deemed to comply with the limit.

Test Mode	Channel	Polarization	Verdict
11G	LCH	Vertical	PASS



PK Result:

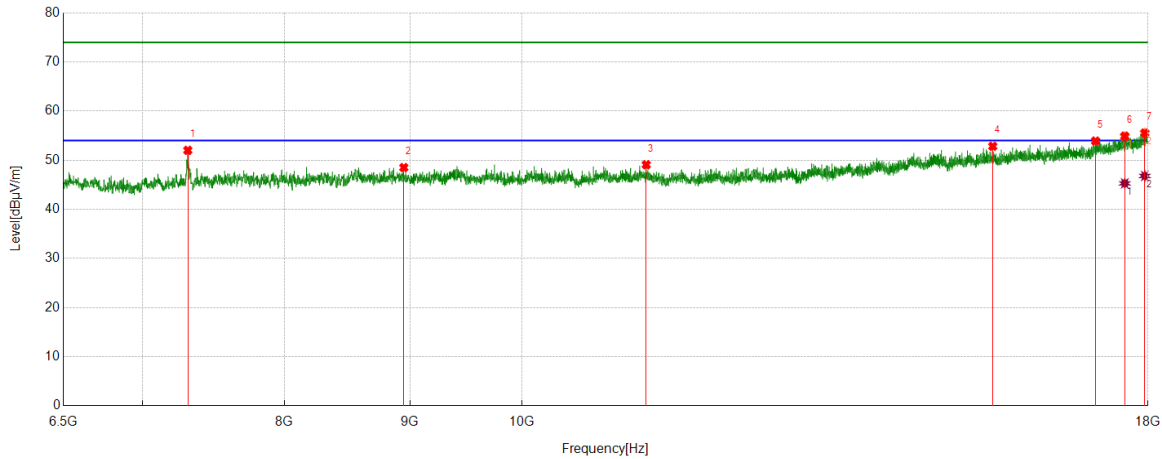
No.	Frequency	Reading Level	Correct Factor	Result	Limit	Margin	Remark
	[MHz]	[dBuV]	[dB/m]	[dBuV/m]	[dBuV/m]	[dB]	
1	7234.6543	46.80	3.84	50.64	74.00	-23.36	Vertical
2	9648.5186	45.25	6.41	51.66	74.00	-22.34	Vertical
3	14431.679	38.65	12.87	51.52	74.00	-22.48	Vertical
4	15443.8055	38.95	13.89	52.84	74.00	-21.16	Vertical
5	16973.4967	37.86	16.09	53.95	74.00	-20.05	Vertical
6	17506.8759	37.29	17.62	54.91	74.00	-19.09	Vertical
7	17930.9914	37.06	19.37	56.43	74.00	-17.57	Vertical

AV Result:

No.	Frequency	Reading Level	Correct Factor	Result	Limit	Margin	Remark
	[MHz]	[dBuV]	[dB/m]	[dBuV/m]	[dBuV/m]	[dB]	
1	17506.8759	27.49	17.62	45.11	54.00	-8.89	Vertical
2	17930.9914	27.09	19.37	46.46	54.00	-7.54	Vertical

- Note: 1. Measurement = Reading Level + Correct Factor,
Correct Factor = Antenna Factor + Loss (Cable + Filter) – Amplifier Gain.
- If Peak Result complies with AV limit, AV Result is deemed to comply with AV limit.
 - Peak detector: RBW: 1 MHz, VBW: 3 MHz.
 - Average detector: RBW: 1 MHz, VBW: 1/T MHz(refer to clause 7.1.).
 - For above 3GHz part, filter losses were only considered in the spurious frequency bands and the authorized band was not corrected for HPF losses.
 - Only the worst case emission was recorded, if it complies with the limit, the other emissions deemed to comply with the limit.

Test Mode	Channel	Polarization	Verdict
11G	MCH	Horizontal	PASS



PK Result:

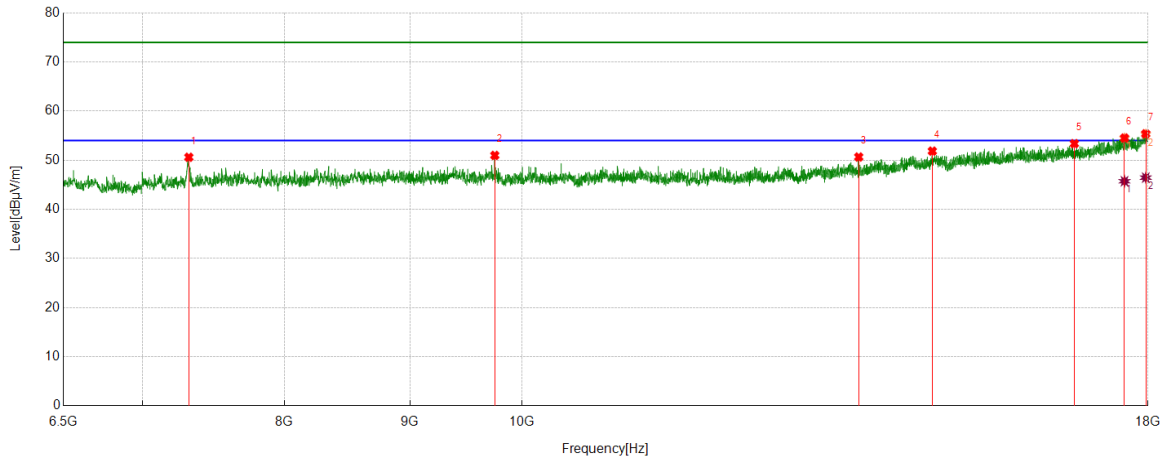
No.	Frequency	Reading Level	Correct Factor	Result	Limit	Margin	Remark
	[MHz]	[dBuV]	[dB/m]	[dBuV/m]	[dBuV/m]	[dB]	
1	7306.5383	48.22	3.80	52.02	74.00	-21.98	Horizontal
2	8949.8062	42.23	6.28	48.51	74.00	-25.49	Horizontal
3	11237.1546	41.81	7.27	49.08	74.00	-24.92	Horizontal
4	15558.8199	39.17	13.68	52.85	74.00	-21.15	Horizontal
5	17134.5168	37.39	16.52	53.91	74.00	-20.09	Horizontal
6	17611.8265	36.85	18.06	54.91	74.00	-19.09	Horizontal
7	17946.8059	36.07	19.48	55.55	74.00	-18.45	Horizontal

AV Result:

No.	Frequency	Reading Level	Correct Factor	Result	Limit	Margin	Remark
	[MHz]	[dBuV]	[dB/m]	[dBuV/m]	[dBuV/m]	[dB]	
1	17611.8265	27.23	18.06	45.29	54.00	-8.71	Horizontal
2	17946.8059	27.32	19.48	46.80	54.00	-7.20	Horizontal

- Note: 1. Measurement = Reading Level + Correct Factor,
Correct Factor = Antenna Factor + Loss (Cable + Filter) – Amplifier Gain.
2. If Peak Result complies with AV limit, AV Result is deemed to comply with AV limit.
3. Peak detector: RBW: 1 MHz, VBW: 3 MHz.
4. Average detector: RBW: 1 MHz, VBW: 1/T MHz(refer to clause 7.1.).
5. For above 3GHz part, filter losses were only considered in the spurious frequency bands and the authorized band was not corrected for HPF losses.
6. Only the worst case emission was recorded, if it complies with the limit, the other emissions deemed to comply with the limit.

Test Mode	Channel	Polarization	Verdict
11G	MCH	Vertical	PASS



PK Result:

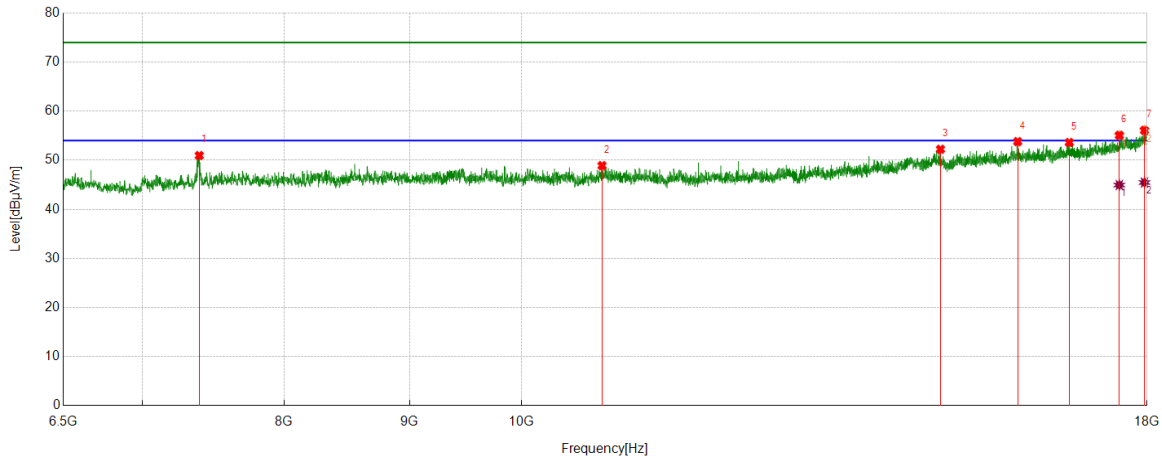
No.	Frequency	Reading Level	Correct Factor	Result	Limit	Margin	Remark
	[MHz]	[dBuV]	[dB/m]	[dBuV/m]	[dBuV/m]	[dB]	
1	7313.7267	46.78	3.83	50.61	74.00	-23.39	Vertical
2	9747.7185	44.51	6.48	50.99	74.00	-23.01	Vertical
3	13718.5898	39.66	11.00	50.66	74.00	-23.34	Vertical
4	14700.5251	39.16	12.70	51.86	74.00	-22.14	Vertical
5	16798.0998	37.29	16.09	53.38	74.00	-20.62	Vertical
6	17607.5134	36.46	18.06	54.52	74.00	-19.48	Vertical
7	17962.6203	35.75	19.63	55.38	74.00	-18.62	Vertical

AV Result:

No.	Frequency	Reading Level	Correct Factor	Result	Limit	Margin	Remark
	[MHz]	[dBuV]	[dB/m]	[dBuV/m]	[dBuV/m]	[dB]	
1	17607.5134	27.66	18.06	45.72	54.00	-8.28	Vertical
2	17962.6203	26.83	19.63	46.46	54.00	-7.54	Vertical

- Note: 1. Measurement = Reading Level + Correct Factor,
Correct Factor = Antenna Factor + Loss (Cable + Filter) – Amplifier Gain.
- If Peak Result complies with AV limit, AV Result is deemed to comply with AV limit.
 - Peak detector: RBW: 1 MHz, VBW: 3 MHz.
 - Average detector: RBW: 1 MHz, VBW: 1/T MHz(refer to clause 7.1.).
 - For above 3GHz part, filter losses were only considered in the spurious frequency bands and the authorized band was not corrected for HPF losses.
 - Only the worst case emission was recorded, if it complies with the limit, the other emissions deemed to comply with the limit.

Test Mode	Channel	Polarization	Verdict
11G	HCH	Horizontal	PASS



PK Result:

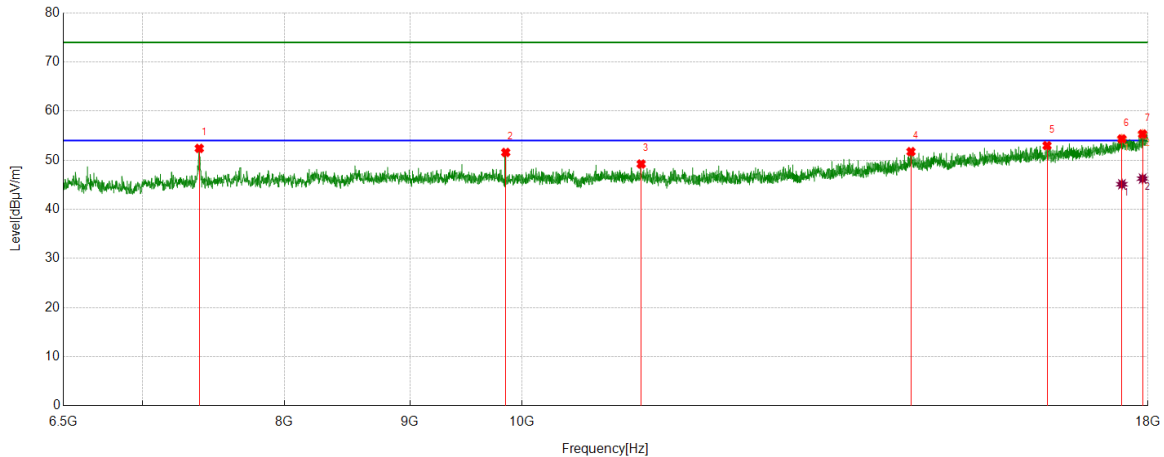
No.	Frequency	Reading Level	Correct Factor	Result	Limit	Margin	Remark
	[MHz]	[dBuV]	[dB/m]	[dBuV/m]	[dBuV/m]	[dB]	
1	7387.0484	46.80	4.15	50.95	74.00	-23.05	Horizontal
2	10785.7232	41.98	6.92	48.90	74.00	-25.10	Horizontal
3	14824.1655	39.33	12.90	52.23	74.00	-21.77	Horizontal
4	15939.805	39.27	14.52	53.79	74.00	-20.21	Horizontal
5	16731.9665	37.51	16.10	53.61	74.00	-20.39	Horizontal
6	17537.0671	37.42	17.66	55.08	74.00	-18.92	Horizontal
7	17956.8696	36.50	19.59	56.09	74.00	-17.91	Horizontal

AV Result:

No.	Frequency	Reading Level	Correct Factor	Result	Limit	Margin	Remark
	[MHz]	[dBuV]	[dB/m]	[dBuV/m]	[dBuV/m]	[dB]	
1	17537.0671	27.29	17.66	44.95	54.00	-9.05	Horizontal
2	17956.8696	25.87	19.59	45.46	54.00	-8.54	Horizontal

- Note: 1. Measurement = Reading Level + Correct Factor,
Correct Factor = Antenna Factor + Loss (Cable + Filter) – Amplifier Gain.
2. If Peak Result complies with AV limit, AV Result is deemed to comply with AV limit.
3. Peak detector: RBW: 1 MHz, VBW: 3 MHz.
4. Average detector: RBW: 1 MHz, VBW: 1/T MHz(refer to clause 7.1.).
5. For above 3GHz part, filter losses were only considered in the spurious frequency bands and the authorized band was not corrected for HPF losses.
6. Only the worst case emission was recorded, if it complies with the limit, the other emissions deemed to comply with the limit.

Test Mode	Channel	Polarization	Verdict
11G	HCH	Vertical	PASS



PK Result:

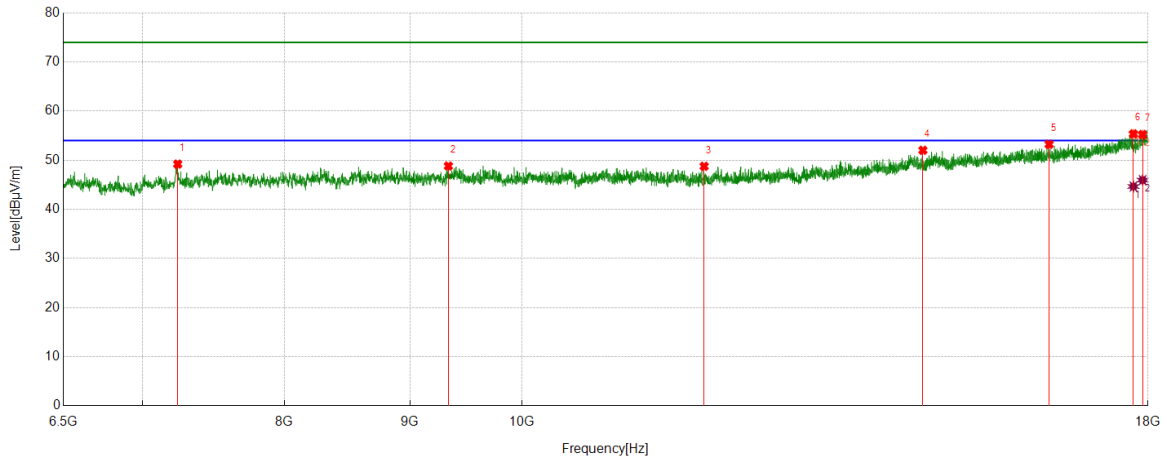
No.	Frequency	Reading Level	Correct Factor	Result	Limit	Margin	Remark
	[MHz]	[dBuV]	[dB/m]	[dBuV/m]	[dBuV/m]	[dB]	
1	7385.6107	48.25	4.16	52.41	74.00	-21.59	Vertical
2	9848.356	45.08	6.51	51.59	74.00	-22.41	Vertical
3	11183.9605	41.90	7.33	49.23	74.00	-24.77	Vertical
4	14408.6761	38.87	12.87	51.74	74.00	-22.26	Vertical
5	16372.5466	37.95	15.03	52.98	74.00	-21.02	Vertical
6	17564.383	36.52	17.83	54.35	74.00	-19.65	Vertical
7	17909.4262	36.09	19.25	55.34	74.00	-18.66	Vertical

AV Result:

No.	Frequency	Reading Level	Correct Factor	Result	Limit	Margin	Remark
	[MHz]	[dBuV]	[dB/m]	[dBuV/m]	[dBuV/m]	[dB]	
1	17564.383	27.28	17.83	45.11	54.00	-8.89	Vertical
2	17909.4262	27.01	19.25	46.26	54.00	-7.74	Vertical

- Note: 1. Measurement = Reading Level + Correct Factor,
Correct Factor = Antenna Factor + Loss (Cable + Filter) – Amplifier Gain.
- If Peak Result complies with AV limit, AV Result is deemed to comply with AV limit.
 - Peak detector: RBW: 1 MHz, VBW: 3 MHz.
 - Average detector: RBW: 1 MHz, VBW: 1/T MHz(refer to clause 7.1.).
 - For above 3GHz part, filter losses were only considered in the spurious frequency bands and the authorized band was not corrected for HPF losses.
 - Only the worst case emission was recorded, if it complies with the limit, the other emissions deemed to comply with the limit.

Test Mode	Channel	Polarization	Verdict
11N HT20	LCH	Horizontal	PASS



PK Result:

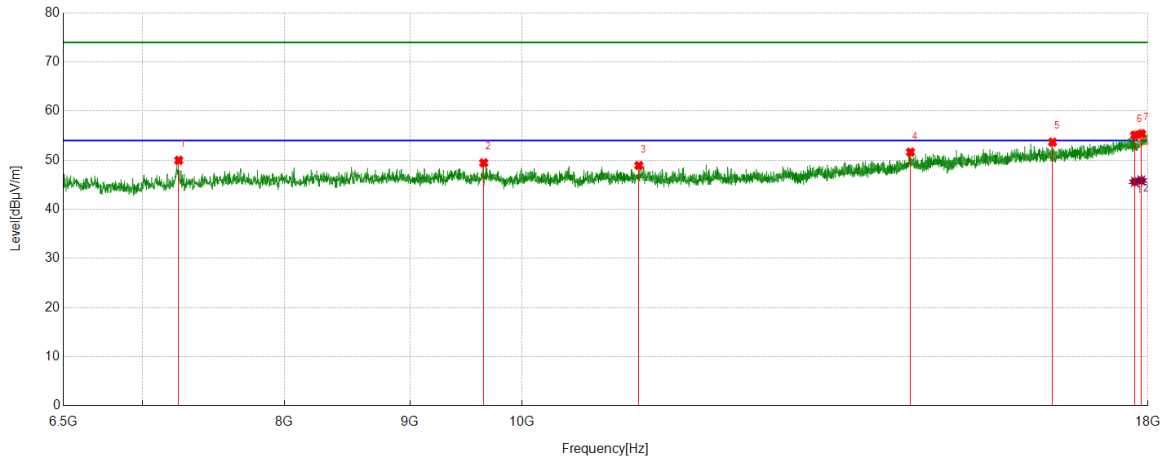
No.	Frequency	Reading Level	Correct Factor	Result	Limit	Margin	Remark
	[MHz]	[dBuV]	[dB/m]	[dBuV/m]	[dBuV/m]	[dB]	
1	7237.5297	45.43	3.78	49.21	74.00	-24.79	Horizontal
2	9332.229	42.49	6.33	48.82	74.00	-25.18	Horizontal
3	11865.4207	40.89	7.88	48.77	74.00	-25.23	Horizontal
4	14571.1339	39.32	12.71	52.03	74.00	-21.97	Horizontal
5	16404.1755	38.20	15.04	53.24	74.00	-20.76	Horizontal
6	17755.5944	36.83	18.54	55.37	74.00	-18.63	Horizontal
7	17909.4262	35.98	19.25	55.23	74.00	-18.77	Horizontal

AV Result:

No.	Frequency	Reading Level	Correct Factor	Result	Limit	Margin	Remark
	[MHz]	[dBuV]	[dB/m]	[dBuV/m]	[dBuV/m]	[dB]	
1	17755.5944	26.11	18.54	44.65	54.00	-9.35	Horizontal
2	17909.4262	26.70	19.25	45.95	54.00	-8.05	Horizontal

- Note: 1. Measurement = Reading Level + Correct Factor,
Correct Factor = Antenna Factor + Loss (Cable + Filter) – Amplifier Gain.
2. If Peak Result complies with AV limit, AV Result is deemed to comply with AV limit.
3. Peak detector: RBW: 1 MHz, VBW: 3 MHz.
4. Average detector: RBW: 1 MHz, VBW: 1/T MHz(refer to clause 7.1.).
5. For above 3GHz part, filter losses were only considered in the spurious frequency bands and the authorized band was not corrected for HPF losses.
6. Only the worst case emission was recorded, if it complies with the limit, the other emissions deemed to comply with the limit.

Test Mode	Channel	Polarization	Verdict
11N HT20	LCH	Vertical	PASS



PK Result:

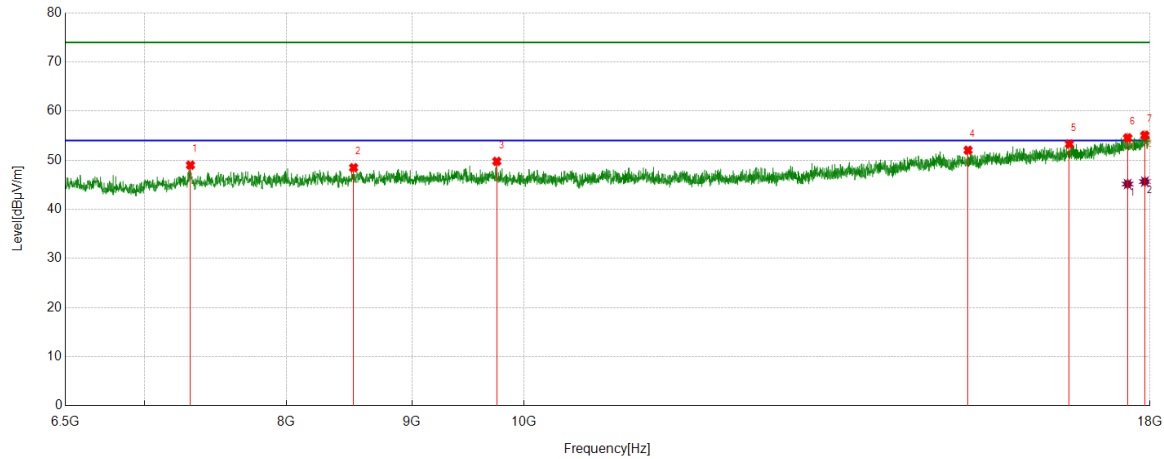
No.	Frequency	Reading Level	Correct Factor	Result	Limit	Margin	Remark
	[MHz]	[dBuV]	[dB/m]	[dBuV/m]	[dBuV/m]	[dB]	
1	7244.7181	46.14	3.84	49.98	74.00	-24.02	Vertical
2	9647.0809	43.08	6.39	49.47	74.00	-24.53	Vertical
3	11159.5199	41.71	7.22	48.93	74.00	-25.07	Vertical
4	14401.4877	38.89	12.75	51.64	74.00	-22.36	Vertical
5	16457.3697	37.93	15.75	53.68	74.00	-20.32	Vertical
6	17777.1596	36.36	18.75	55.11	74.00	-18.89	Vertical
7	17890.7363	36.08	19.30	55.38	74.00	-18.62	Vertical

AV Result:

No.	Frequency	Reading Level	Correct Factor	Result	Limit	Margin	Remark
	[MHz]	[dBuV]	[dB/m]	[dBuV/m]	[dBuV/m]	[dB]	
1	17777.1596	26.87	18.75	45.62	54.00	-8.38	Vertical
2	17890.7363	26.57	19.30	45.87	54.00	-8.13	Vertical

- Note: 1. Measurement = Reading Level + Correct Factor,
Correct Factor = Antenna Factor + Loss (Cable + Filter) – Amplifier Gain.
- If Peak Result complies with AV limit, AV Result is deemed to comply with AV limit.
 - Peak detector: RBW: 1 MHz, VBW: 3 MHz.
 - Average detector: RBW: 1 MHz, VBW: 1/T MHz(refer to clause 7.1.).
 - For above 3GHz part, filter losses were only considered in the spurious frequency bands and the authorized band was not corrected for HPF losses.
 - Only the worst case emission was recorded, if it complies with the limit, the other emissions deemed to comply with the limit.

Test Mode	Channel	Polarization	Verdict
11N HT20	MCH	Horizontal	PASS



PK Result:

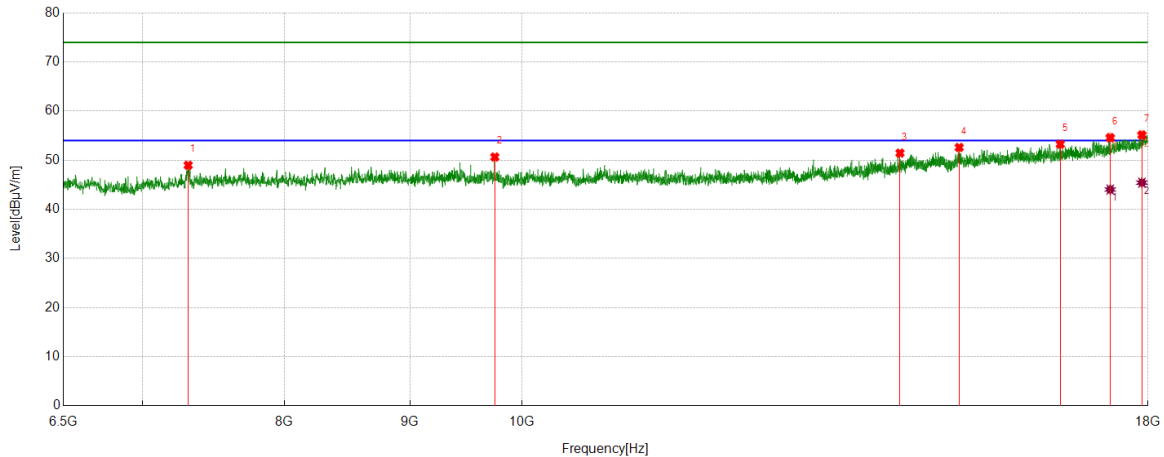
No.	Frequency	Reading Level	Correct Factor	Result	Limit	Margin	Remark
	[MHz]	[dBuV]	[dB/m]	[dBuV/m]	[dBuV/m]	[dB]	
1	7310.8514	45.15	3.85	49.00	74.00	-25.00	Horizontal
2	8521.3777	42.01	6.47	48.48	74.00	-25.52	Horizontal
3	9747.7185	43.29	6.48	49.77	74.00	-24.23	Horizontal
4	15173.5217	38.75	13.29	52.04	74.00	-21.96	Horizontal
5	16687.3984	37.60	15.70	53.30	74.00	-20.70	Horizontal
6	17626.2033	36.51	18.06	54.57	74.00	-19.43	Horizontal
7	17913.7392	35.80	19.29	55.09	74.00	-18.91	Horizontal

AV Result:

No.	Frequency	Reading Level	Correct Factor	Result	Limit	Margin	Remark
	[MHz]	[dBuV]	[dB/m]	[dBuV/m]	[dBuV/m]	[dB]	
1	17626.2033	27.09	18.06	45.15	54.00	-8.85	Horizontal
2	17913.7392	26.36	19.29	45.65	54.00	-8.35	Horizontal

- Note: 1. Measurement = Reading Level + Correct Factor,
Correct Factor = Antenna Factor + Loss (Cable + Filter) – Amplifier Gain.
- If Peak Result complies with AV limit, AV Result is deemed to comply with AV limit.
 - Peak detector: RBW: 1 MHz, VBW: 3 MHz.
 - Average detector: RBW: 1 MHz, VBW: 1/T MHz(refer to clause 7.1.).
 - For above 3GHz part, filter losses were only considered in the spurious frequency bands and the authorized band was not corrected for HPF losses.
 - Only the worst case emission was recorded, if it complies with the limit, the other emissions deemed to comply with the limit.

Test Mode	Channel	Polarization	Verdict
11N HT20	MCH	Vertical	PASS



PK Result:

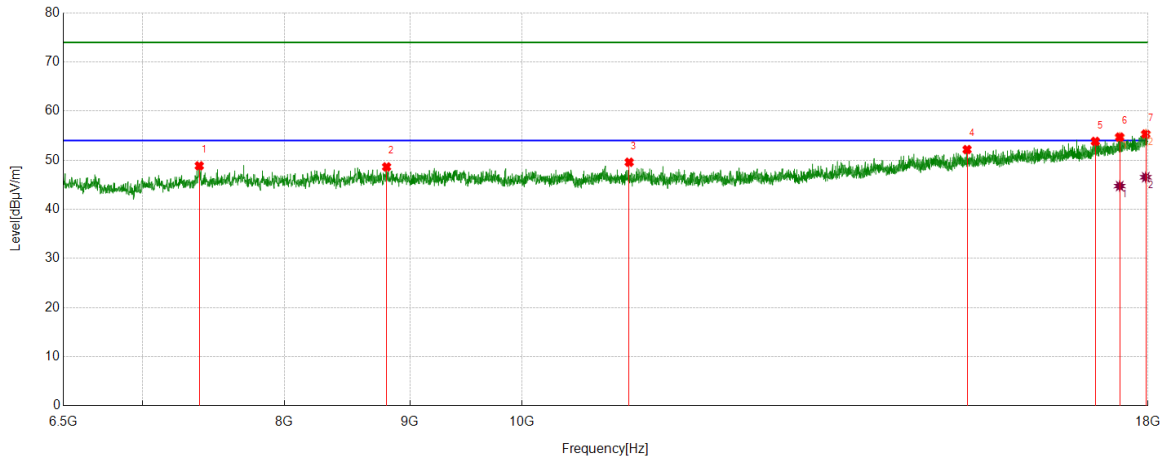
No.	Frequency	Reading Level	Correct Factor	Result	Limit	Margin	Remark
	[MHz]	[dBuV]	[dB/m]	[dBuV/m]	[dBuV/m]	[dB]	
1	7309.4137	45.13	3.85	48.98	74.00	-25.02	Vertical
2	9747.7185	44.18	6.48	50.66	74.00	-23.34	Vertical
3	14260.5951	39.41	12.05	51.46	74.00	-22.54	Vertical
4	15075.7595	39.49	13.11	52.60	74.00	-21.40	Vertical
5	16576.6971	37.44	15.83	53.27	74.00	-20.73	Vertical
6	17373.1716	37.26	17.34	54.60	74.00	-19.40	Vertical
7	17897.9247	35.95	19.20	55.15	74.00	-18.85	Vertical

AV Result:

No.	Frequency	Reading Level	Correct Factor	Result	Limit	Margin	Remark
	[MHz]	[dBuV]	[dB/m]	[dBuV/m]	[dBuV/m]	[dB]	
1	17373.1716	26.69	17.34	44.03	54.00	-9.97	Vertical
2	17897.9247	26.24	19.20	45.44	54.00	-8.56	Vertical

- Note: 1. Measurement = Reading Level + Correct Factor,
Correct Factor = Antenna Factor + Loss (Cable + Filter) – Amplifier Gain.
- If Peak Result complies with AV limit, AV Result is deemed to comply with AV limit.
 - Peak detector: RBW: 1 MHz, VBW: 3 MHz.
 - Average detector: RBW: 1 MHz, VBW: 1/T MHz(refer to clause 7.1.).
 - For above 3GHz part, filter losses were only considered in the spurious frequency bands and the authorized band was not corrected for HPF losses.
 - Only the worst case emission was recorded, if it complies with the limit, the other emissions deemed to comply with the limit.

Test Mode	Channel	Polarization	Verdict
11N HT20	HCH	Horizontal	PASS



PK Result:

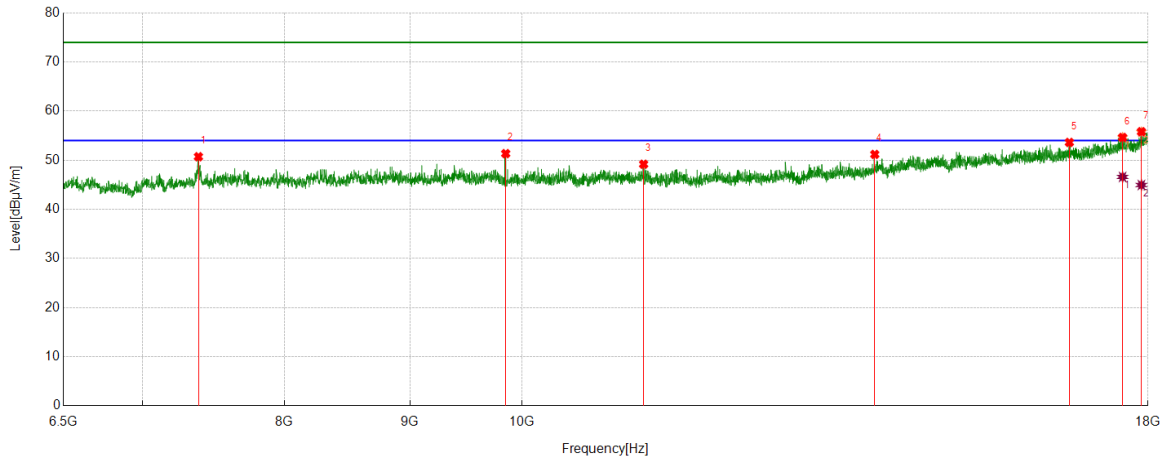
No.	Frequency	Reading Level	Correct Factor	Result	Limit	Margin	Remark
	[MHz]	[dBuV]	[dB/m]	[dBuV/m]	[dBuV/m]	[dB]	
1	7385.6107	44.70	4.16	48.86	74.00	-25.14	Horizontal
2	8806.0383	42.38	6.27	48.65	74.00	-25.35	Horizontal
3	11058.8824	42.28	7.31	49.59	74.00	-24.41	Horizontal
4	15187.8985	38.80	13.37	52.17	74.00	-21.83	Horizontal
5	17131.6415	37.25	16.59	53.84	74.00	-20.16	Horizontal
6	17528.4411	37.14	17.58	54.72	74.00	-19.28	Horizontal
7	17962.6203	35.71	19.63	55.34	74.00	-18.66	Horizontal

AV Result:

No.	Frequency	Reading Level	Correct Factor	Result	Limit	Margin	Remark
	[MHz]	[dBuV]	[dB/m]	[dBuV/m]	[dBuV/m]	[dB]	
1	17528.4411	27.16	17.58	44.74	54.00	-9.26	Horizontal
2	17962.6203	26.91	19.63	46.54	54.00	-7.46	Horizontal

- Note: 1. Measurement = Reading Level + Correct Factor,
Correct Factor = Antenna Factor + Loss (Cable + Filter) – Amplifier Gain.
- If Peak Result complies with AV limit, AV Result is deemed to comply with AV limit.
 - Peak detector: RBW: 1 MHz, VBW: 3 MHz.
 - Average detector: RBW: 1 MHz, VBW: 1/T MHz(refer to clause 7.1.).
 - For above 3GHz part, filter losses were only considered in the spurious frequency bands and the authorized band was not corrected for HPF losses.
 - Only the worst case emission was recorded, if it complies with the limit, the other emissions deemed to comply with the limit.

Test Mode	Channel	Polarization	Verdict
11N HT20	HCH	Vertical	PASS



PK Result:

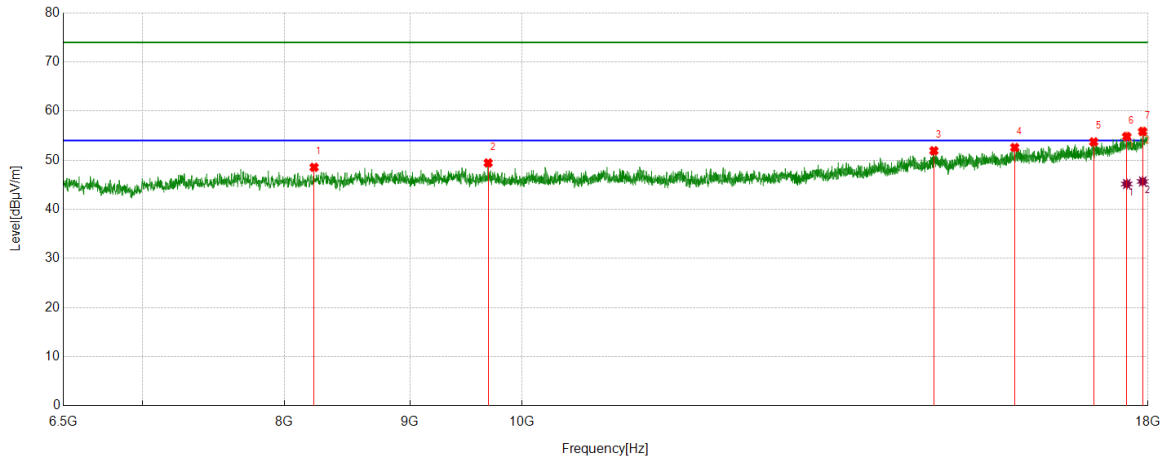
No.	Frequency	Reading Level	Correct Factor	Result	Limit	Margin	Remark
	[MHz]	[dBuV]	[dB/m]	[dBuV/m]	[dBuV/m]	[dB]	
1	7379.86	46.54	4.18	50.72	74.00	-23.28	Vertical
2	9848.356	44.84	6.51	51.35	74.00	-22.65	Vertical
3	11209.8387	41.80	7.39	49.19	74.00	-24.81	Vertical
4	13927.0534	39.81	11.38	51.19	74.00	-22.81	Vertical
5	16719.0274	37.36	16.27	53.63	74.00	-20.37	Vertical
6	17575.8845	36.71	17.93	54.64	74.00	-19.36	Vertical
7	17889.2987	36.51	19.30	55.81	74.00	-18.19	Vertical

AV Result:

No.	Frequency	Reading Level	Correct Factor	Result	Limit	Margin	Remark
	[MHz]	[dBuV]	[dB/m]	[dBuV/m]	[dBuV/m]	[dB]	
1	17575.8845	28.67	17.93	46.60	54.00	-7.40	Vertical
2	17889.2987	25.65	19.30	44.95	54.00	-9.05	Vertical

- Note: 1. Measurement = Reading Level + Correct Factor,
Correct Factor = Antenna Factor + Loss (Cable + Filter) – Amplifier Gain.
- If Peak Result complies with AV limit, AV Result is deemed to comply with AV limit.
 - Peak detector: RBW: 1 MHz, VBW: 3 MHz.
 - Average detector: RBW: 1 MHz, VBW: 1/T MHz(refer to clause 7.1.).
 - For above 3GHz part, filter losses were only considered in the spurious frequency bands and the authorized band was not corrected for HPF losses.
 - Only the worst case emission was recorded, if it complies with the limit, the other emissions deemed to comply with the limit.

Test Mode	Channel	Polarization	Verdict
11N HT40	LCH	Horizontal	PASS



PK Result:

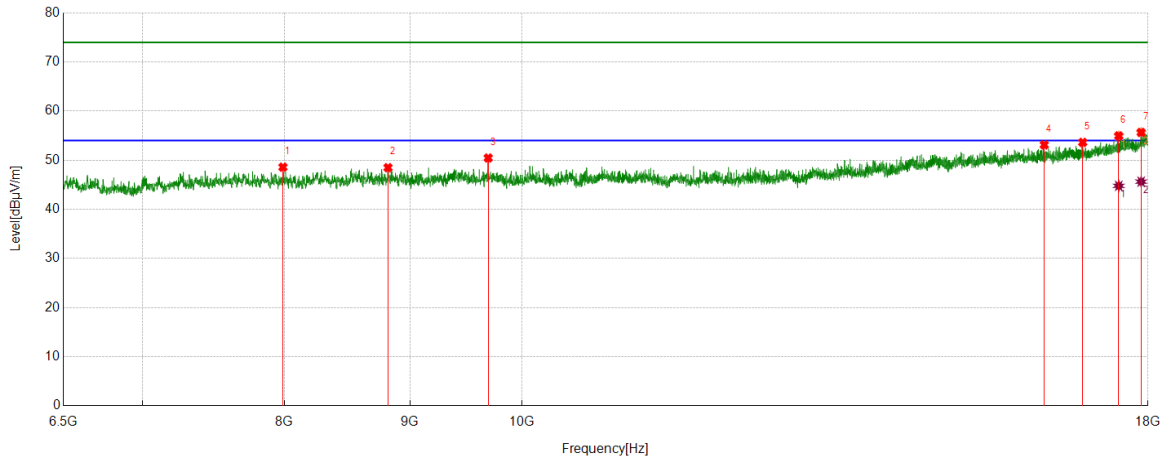
No.	Frequency	Reading Level	Correct Factor	Result	Limit	Margin	Remark
	[MHz]	[dBuV]	[dB/m]	[dBuV/m]	[dBuV/m]	[dB]	
1	8226.6533	42.46	6.10	48.56	74.00	-25.44	Horizontal
2	9687.3359	42.94	6.51	49.45	74.00	-24.55	Horizontal
3	14722.0903	39.12	12.81	51.93	74.00	-22.07	Horizontal
4	15883.7355	37.92	14.67	52.59	74.00	-21.41	Horizontal
5	17105.7632	37.33	16.41	53.74	74.00	-20.26	Horizontal
6	17644.8931	36.82	18.01	54.83	74.00	-19.17	Horizontal
7	17910.8639	36.60	19.26	55.86	74.00	-18.14	Horizontal

AV Result:

No.	Frequency	Reading Level	Correct Factor	Result	Limit	Margin	Remark
	[MHz]	[dBuV]	[dB/m]	[dBuV/m]	[dBuV/m]	[dB]	
1	17644.8931	27.15	18.01	45.16	54.00	-8.84	Horizontal
2	17910.8639	26.42	19.26	45.68	54.00	-8.32	Horizontal

- Note: 1. Measurement = Reading Level + Correct Factor,
Correct Factor = Antenna Factor + Loss (Cable + Filter) – Amplifier Gain.
2. If Peak Result complies with AV limit, AV Result is deemed to comply with AV limit.
3. Peak detector: RBW: 1 MHz, VBW: 3 MHz.
4. Average detector: RBW: 1 MHz, VBW: 1/T MHz(refer to clause 7.1.).
5. For above 3GHz part, filter losses were only considered in the spurious frequency bands and the authorized band was not corrected for HPF losses.
6. Only the worst case emission was recorded, if it complies with the limit, the other emissions deemed to comply with the limit.

Test Mode	Channel	Polarization	Verdict
11N HT40	LCH	Vertical	PASS



PK Result:

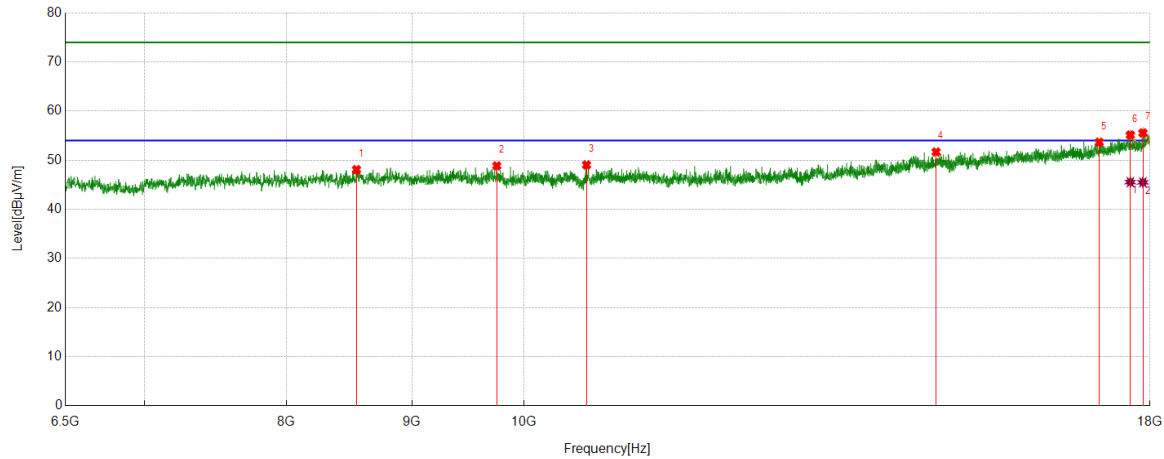
No.	Frequency	Reading Level	Correct Factor	Result	Limit	Margin	Remark
	[MHz]	[dBuV]	[dB/m]	[dBuV/m]	[dBuV/m]	[dB]	
1	7989.4362	42.99	5.60	48.59	74.00	-25.41	Vertical
2	8817.5397	42.23	6.26	48.49	74.00	-25.51	Vertical
3	9687.3359	43.95	6.51	50.46	74.00	-23.54	Vertical
4	16329.4162	37.99	15.14	53.13	74.00	-20.87	Vertical
5	16930.3663	37.59	16.05	53.64	74.00	-20.36	Vertical
6	17512.6266	37.35	17.62	54.97	74.00	-19.03	Vertical
7	17884.9856	36.43	19.24	55.67	74.00	-18.33	Vertical

AV Result:

No.	Frequency	Reading Level	Correct Factor	Result	Limit	Margin	Remark
	[MHz]	[dBuV]	[dB/m]	[dBuV/m]	[dBuV/m]	[dB]	
1	17512.6266	27.16	17.62	44.78	54.00	-9.22	Vertical
2	17884.9856	26.40	19.24	45.64	54.00	-8.36	Vertical

- Note: 1. Measurement = Reading Level + Correct Factor,
Correct Factor = Antenna Factor + Loss (Cable + Filter) – Amplifier Gain.
- If Peak Result complies with AV limit, AV Result is deemed to comply with AV limit.
 - Peak detector: RBW: 1 MHz, VBW: 3 MHz.
 - Average detector: RBW: 1 MHz, VBW: 1/T MHz(refer to clause 7.1.).
 - For above 3GHz part, filter losses were only considered in the spurious frequency bands and the authorized band was not corrected for HPF losses.
 - Only the worst case emission was recorded, if it complies with the limit, the other emissions deemed to comply with the limit.

Test Mode	Channel	Polarization	Verdict
11N HT40	MCH	Horizontal	PASS



PK Result:

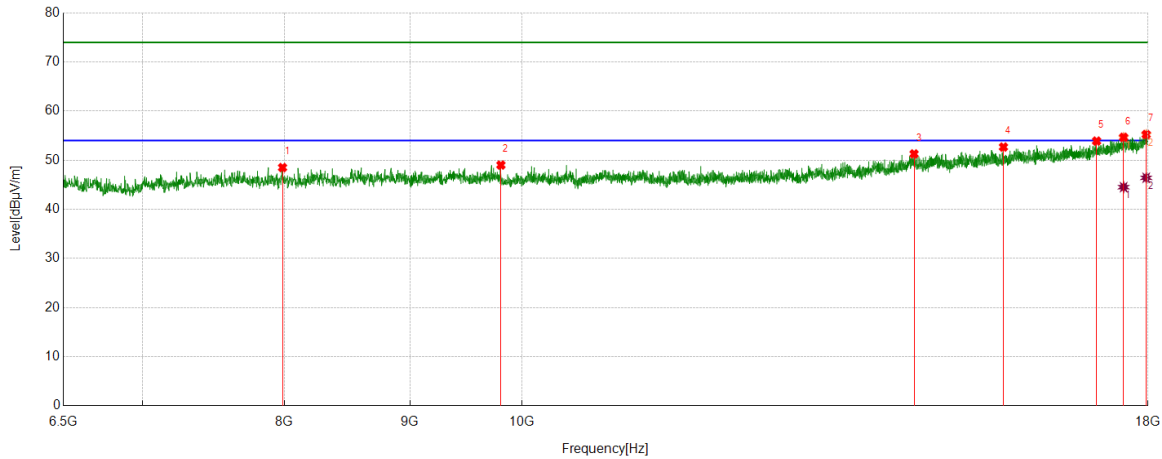
No.	Frequency	Reading Level	Correct Factor	Result	Limit	Margin	Remark
	[MHz]	[dBuV]	[dB/m]	[dBuV/m]	[dBuV/m]	[dB]	
1	8544.3805	41.81	6.28	48.09	74.00	-25.91	Horizontal
2	9747.7185	42.38	6.48	48.86	74.00	-25.14	Horizontal
3	10604.5756	42.01	7.04	49.05	74.00	-24.95	Horizontal
4	14724.9656	38.88	12.81	51.69	74.00	-22.31	Horizontal
5	17161.8327	37.21	16.46	53.67	74.00	-20.33	Horizontal
6	17670.7713	37.07	18.07	55.14	74.00	-18.86	Horizontal
7	17880.6726	36.38	19.19	55.57	74.00	-18.43	Horizontal

AV Result:

No.	Frequency	Reading Level	Correct Factor	Result	Limit	Margin	Remark
	[MHz]	[dBuV]	[dB/m]	[dBuV/m]	[dBuV/m]	[dB]	
1	17670.7713	27.47	18.07	45.54	54.00	-8.46	Horizontal
2	17880.6726	26.31	19.19	45.50	54.00	-8.50	Horizontal

- Note: 1. Measurement = Reading Level + Correct Factor,
Correct Factor = Antenna Factor + Loss (Cable + Filter) – Amplifier Gain.
- If Peak Result complies with AV limit, AV Result is deemed to comply with AV limit.
 - Peak detector: RBW: 1 MHz, VBW: 3 MHz.
 - Average detector: RBW: 1 MHz, VBW: 1/T MHz(refer to clause 7.1.).
 - For above 3GHz part, filter losses were only considered in the spurious frequency bands and the authorized band was not corrected for HPF losses.
 - Only the worst case emission was recorded, if it complies with the limit, the other emissions deemed to comply with the limit.

Test Mode	Channel	Polarization	Verdict
11N HT40	MCH	Vertical	PASS



PK Result:

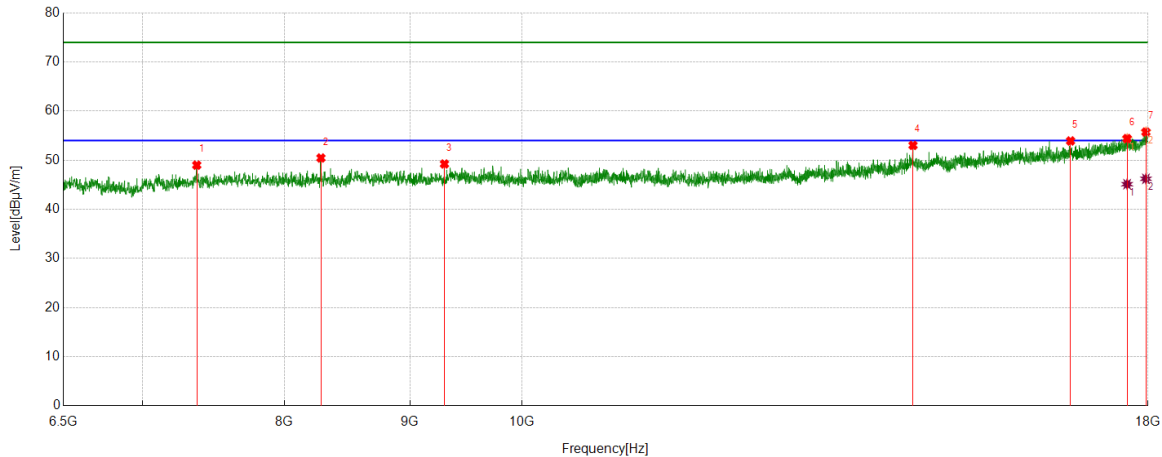
No.	Frequency	Reading Level	Correct Factor	Result	Limit	Margin	Remark
	[MHz]	[dBuV]	[dB/m]	[dBuV/m]	[dBuV/m]	[dB]	
1	7986.5608	42.99	5.52	48.51	74.00	-25.49	Vertical
2	9803.788	42.64	6.38	49.02	74.00	-24.98	Vertical
3	14450.3688	38.36	12.93	51.29	74.00	-22.71	Vertical
4	15715.5269	38.63	14.06	52.69	74.00	-21.31	Vertical
5	17151.769	37.45	16.46	53.91	74.00	-20.09	Vertical
6	17593.1366	36.63	18.04	54.67	74.00	-19.33	Vertical
7	17969.8087	35.62	19.63	55.25	74.00	-18.75	Vertical

AV Result:

No.	Frequency	Reading Level	Correct Factor	Result	Limit	Margin	Remark
	[MHz]	[dBuV]	[dB/m]	[dBuV/m]	[dBuV/m]	[dB]	
1	17593.1366	26.48	18.04	44.52	54.00	-9.48	Vertical
2	17969.8087	26.80	19.63	46.43	54.00	-7.57	Vertical

- Note: 1. Measurement = Reading Level + Correct Factor,
Correct Factor = Antenna Factor + Loss (Cable + Filter) – Amplifier Gain.
- If Peak Result complies with AV limit, AV Result is deemed to comply with AV limit.
 - Peak detector: RBW: 1 MHz, VBW: 3 MHz.
 - Average detector: RBW: 1 MHz, VBW: 1/T MHz(refer to clause 7.1.).
 - For above 3GHz part, filter losses were only considered in the spurious frequency bands and the authorized band was not corrected for HPF losses.
 - Only the worst case emission was recorded, if it complies with the limit, the other emissions deemed to comply with the limit.

Test Mode	Channel	Polarization	Verdict
11N HT40	HCH	Horizontal	PASS



PK Result:

No.	Frequency	Reading Level	Correct Factor	Result	Limit	Margin	Remark
	[MHz]	[dBuV]	[dB/m]	[dBuV/m]	[dBuV/m]	[dB]	
1	7368.3585	44.70	4.30	49.00	74.00	-25.00	Horizontal
2	8279.8475	44.03	6.43	50.46	74.00	-23.54	Horizontal
3	9297.7247	43.06	6.18	49.24	74.00	-24.76	Horizontal
4	14435.992	40.16	12.87	53.03	74.00	-20.97	Horizontal
5	16737.7172	37.97	15.96	53.93	74.00	-20.07	Horizontal
6	17650.6438	36.38	18.03	54.41	74.00	-19.59	Horizontal
7	17965.4957	36.12	19.63	55.75	74.00	-18.25	Horizontal

AV Result:

No.	Frequency	Reading Level	Correct Factor	Result	Limit	Margin	Remark
	[MHz]	[dBuV]	[dB/m]	[dBuV/m]	[dBuV/m]	[dB]	
1	17650.6438	27.09	18.03	45.12	54.00	-8.88	Horizontal
2	17965.4957	26.59	19.63	46.22	54.00	-7.78	Horizontal

- Note: 1. Measurement = Reading Level + Correct Factor,
Correct Factor = Antenna Factor + Loss (Cable + Filter) – Amplifier Gain.
- If Peak Result complies with AV limit, AV Result is deemed to comply with AV limit.
 - Peak detector: RBW: 1 MHz, VBW: 3 MHz.
 - Average detector: RBW: 1 MHz, VBW: 1/T MHz(refer to clause 7.1.).
 - For above 3GHz part, filter losses were only considered in the spurious frequency bands and the authorized band was not corrected for HPF losses.
 - Only the worst case emission was recorded, if it complies with the limit, the other emissions deemed to comply with the limit.