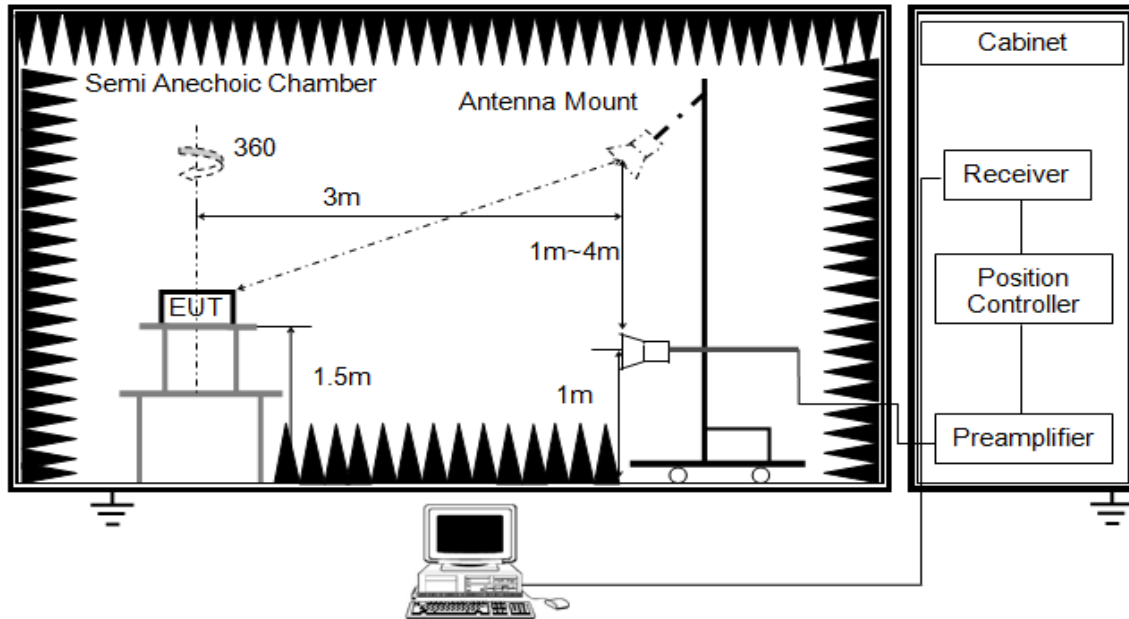


Above 1G

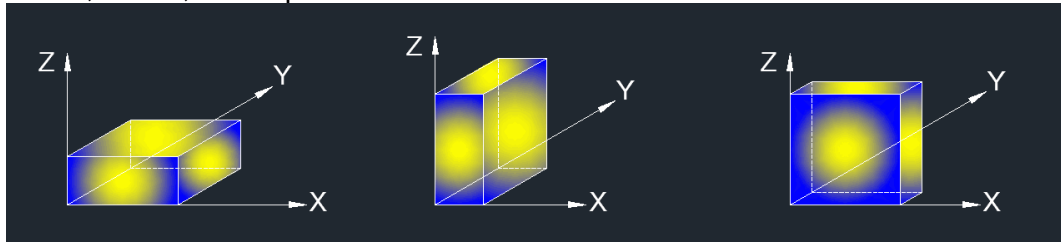


The setting of the spectrum analyser

RBW	1 MHz
VBW	PEAK:3 MHz AVG: See note 6
Sweep	Auto
Detector	Peak
Trace	Max hold

1. The testing follows the guidelines in ANSI C63.10-2013.
2. The EUT was arranged to its worst case and then tune the antenna tower (from 1 m to 4 m) and turntable (from 0 degree to 360 degrees) to find the maximum reading. A pre-amp and a high pass filter are used for the test in order to get better signal level. Both horizontal and vertical polarizations of the antenna are set to make the measurement.
3. The EUT was placed on a turntable with 1.5m above ground.
4. The EUT was set 3 meters from the interference receiving antenna, which was mounted on the top of a variable height antenna tower.
5. For measurement above 1GHz, the emission measurement will be measured by the peak detector. This peak level, once corrected, must comply with the limit specified in Section 15.209.
6. For measurements above 1 GHz, the resolution bandwidth is set to 1 MHz, then the video bandwidth is set to 3 MHz for peak measurements; and 1 MHz resolution bandwidth with video bandwidth $\geq 1/T$ but not less than the setting list in section 7.1 when use peak detector, max hold to be run for at least $[50 \cdot (1/\text{Duty Cycle})]$ traces for average measurements. For the Duty Cycle need to refer the results in section 7.1.
7. For the actual test configuration, please refer to the related item in this test report (Photographs of the Test Configuration)

X axis, Y axis, Z axis positions:



Note: For all radiated test, EUT in one orthogonal axis (X axis) emissions had been tested and recorded in the report.

8.2. TEST ENVIRONMENT

Temperature	22°C	Relative Humidity	56%
Atmosphere Pressure	101kPa	Test Voltage	AC 120V

8.3. RESTRICTED BANDEDGE

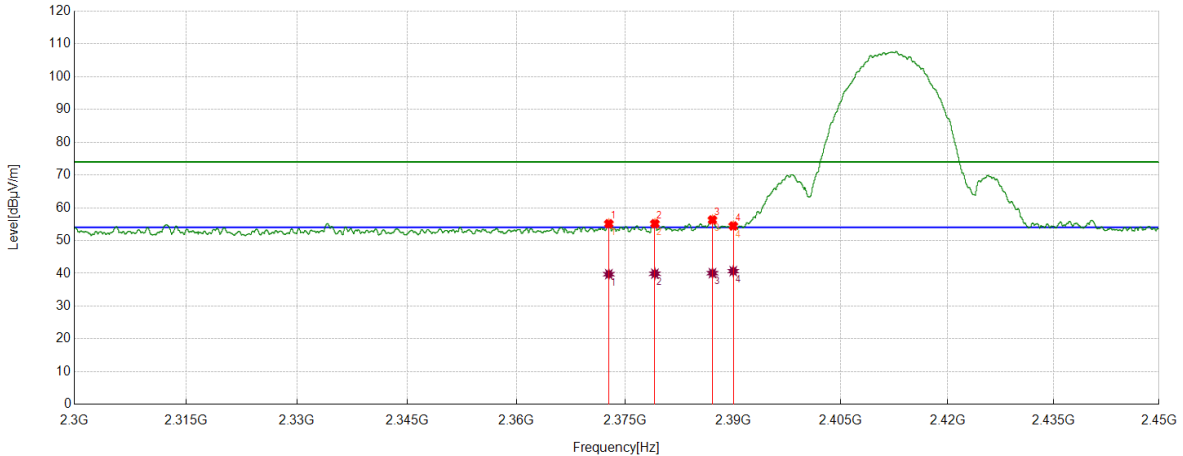
TEST RESULT TABLE

Test Mode	Channel	P _{uw} (dBm)	Verdict
11B	LCH	<Limit	PASS
	MCH	<Limit	PASS
	HCH	<Limit	PASS
11G	LCH	<Limit	PASS
	MCH	<Limit	PASS
	HCH	<Limit	PASS
11N HT20	LCH	<Limit	PASS
	MCH	<Limit	PASS
	HCH	<Limit	PASS
11N HT40	LCH	<Limit	PASS
	MCH	<Limit	PASS
	HCH	<Limit	PASS

Note: The EUT can transmit with the docker or without the docker, both the two conditions were tested, the condition without the docker was the worse case and included in this report.

TEST GRAPHS

Test Mode	Channel	Polarization	Verdict
11B	LCH	Horizontal	PASS



PK Result:

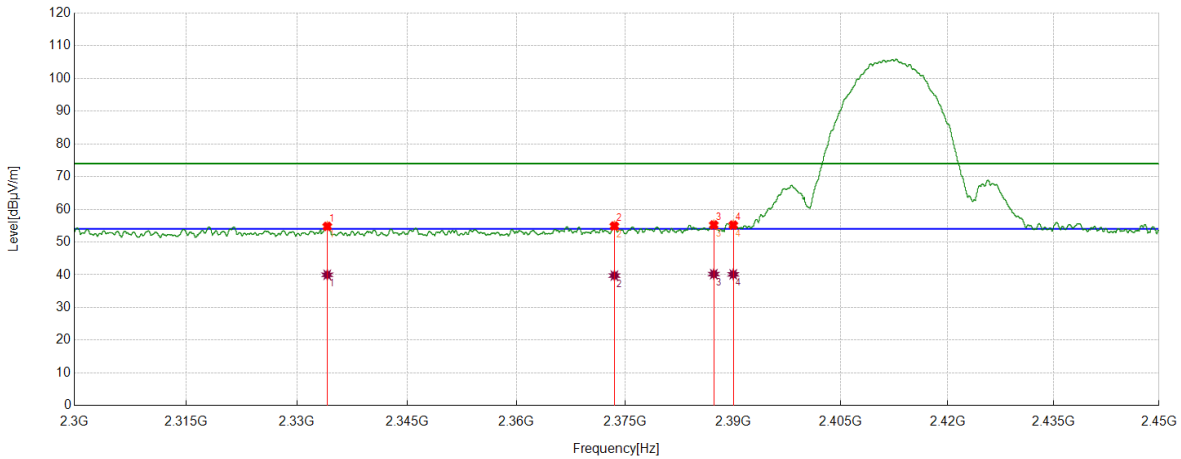
No.	Frequency	Reading Level	Correct Factor	Result	Limit	Margin	Remark
	[MHz]	[dBuV]	[dB/m]	[dBuV/m]	[dBuV/m]	[dB]	
1	2372.7403	44.96	10.16	55.12	74.00	-18.88	Horizontal
2	2379.1161	44.87	10.28	55.15	74.00	-18.85	Horizontal
3	2387.1046	45.96	10.34	56.30	74.00	-17.70	Horizontal
4	2390.0000	44.10	10.35	54.45	74.00	-19.55	Horizontal

AV Result:

No.	Frequency	Reading Level	Correct Factor	Result	Limit	Margin	Remark
	[MHz]	[dBuV]	[dB/m]	[dBuV/m]	[dBuV/m]	[dB]	
1	2372.7403	29.58	10.16	39.74	54.00	-14.26	Horizontal
2	2379.1161	29.62	10.28	39.90	54.00	-14.10	Horizontal
3	2387.1046	29.72	10.34	40.06	54.00	-13.94	Horizontal
4	2390.0000	30.32	10.35	40.67	54.00	-13.33	Horizontal

- Note: 1. Peak detector: RBW: 1 MHz, VBW: 3 MHz.
 2. Average detector: RBW: 1 MHz, VBW: 1/T MHz(refer to clause 7.1.).
 3. Measurement = Reading Level + Correct Factor,
 Correct Factor = Antenna Factor + Loss (Cable + Attenuator) – Amplifier Gain.
 4. Only the worst case emission was recorded, if it complies with the limit, the other emissions deemed to comply with the limit.

Test Mode	Channel	Polarization	Verdict
11B	LCH	Vertical	PASS



PK Result:

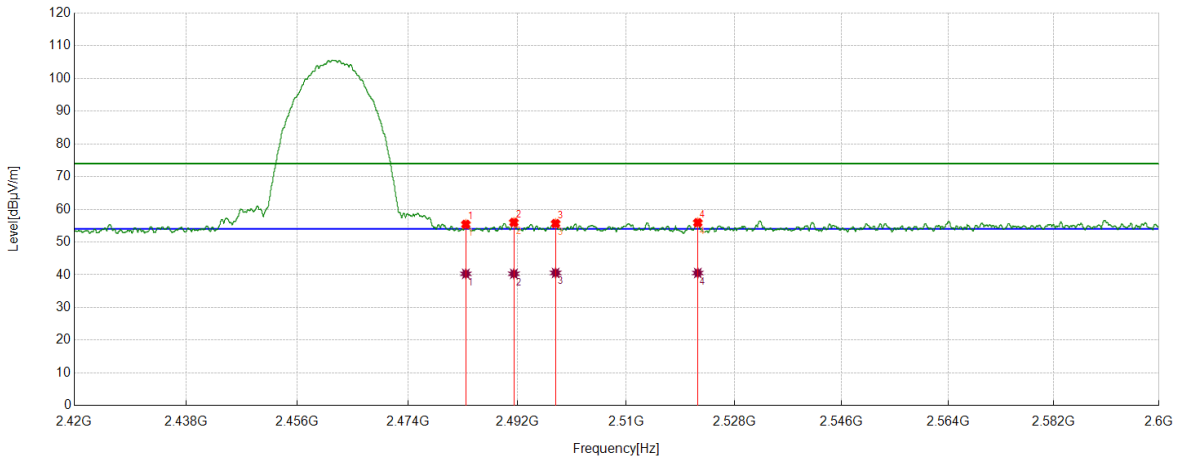
No.	Frequency	Reading Level	Correct Factor	Result	Limit	Margin	Remark
	[MHz]	[dBuV]	[dB/m]	[dBuV/m]	[dBuV/m]	[dB]	
1	2334.148	45.01	9.78	54.79	74.00	-19.21	Vertical
2	2373.5092	44.72	10.18	54.90	74.00	-19.10	Vertical
3	2387.2922	44.90	10.34	55.24	74.00	-18.76	Vertical
4	2390.0000	44.84	10.35	55.19	74.00	-18.81	Vertical

AV Result:

No.	Frequency	Reading Level	Correct Factor	Result	Limit	Margin	Remark
	[MHz]	[dBuV]	[dB/m]	[dBuV/m]	[dBuV/m]	[dB]	
1	2334.148	30.21	9.78	39.99	54.00	-14.01	Vertical
2	2373.5092	29.58	10.18	39.76	54.00	-14.24	Vertical
3	2387.2922	29.86	10.34	40.20	54.00	-13.80	Vertical
4	2390.0000	29.79	10.35	40.14	54.00	-13.86	Vertical

- Note: 1. Peak detector: RBW: 1 MHz, VBW: 3 MHz.
 2. Average detector: RBW: 1 MHz, VBW: 1/T MHz(refer to clause 7.1.).
 3. Measurement = Reading Level + Correct Factor,
 Correct Factor = Antenna Factor + Loss (Cable + Attenuator) – Amplifier Gain.
 4. Only the worst case emission was recorded, if it complies with the limit, the other emissions deemed to comply with the limit.

Test Mode	Channel	Polarization	Verdict
11B	HCH	Horizontal	PASS



PK Result:

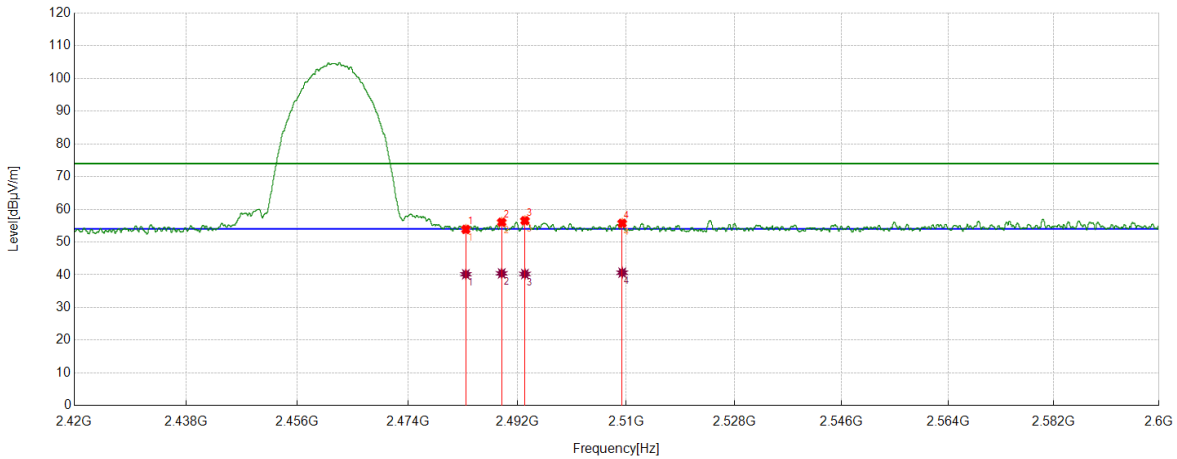
No.	Frequency	Reading Level	Correct Factor	Result	Limit	Margin	Remark
	[MHz]	[dBuV]	[dB/m]	[dBuV/m]	[dBuV/m]	[dB]	
1	2483.5000	44.77	10.64	55.41	74.00	-18.59	Horizontal
2	2491.4014	45.21	10.78	55.99	74.00	-18.01	Horizontal
3	2498.2873	44.91	10.74	55.65	74.00	-18.35	Horizontal
4	2521.8927	44.85	11.06	55.91	74.00	-18.09	Horizontal

AV Result:

No.	Frequency	Reading Level	Correct Factor	Result	Limit	Margin	Remark
	[MHz]	[dBuV]	[dB/m]	[dBuV/m]	[dBuV/m]	[dB]	
1	2483.5000	29.65	10.64	40.29	54.00	-13.71	Horizontal
2	2491.4014	29.52	10.78	40.30	54.00	-13.70	Horizontal
3	2498.2873	29.83	10.74	40.57	54.00	-13.43	Horizontal
4	2521.8927	29.48	11.06	40.54	54.00	-13.46	Horizontal

- Note: 1. Peak detector: RBW: 1 MHz, VBW: 3 MHz.
 2. Average detector: RBW: 1 MHz, VBW: 1/T MHz(refer to clause 7.1.).
 3. Measurement = Reading Level + Correct Factor,
 Correct Factor = Antenna Factor + Loss (Cable + Attenuator) – Amplifier Gain.
 4. Only the worst case emission was recorded, if it complies with the limit, the other emissions deemed to comply with the limit.

Test Mode	Channel	Polarization	Verdict
11B	HCH	Vertical	PASS



PK Result:

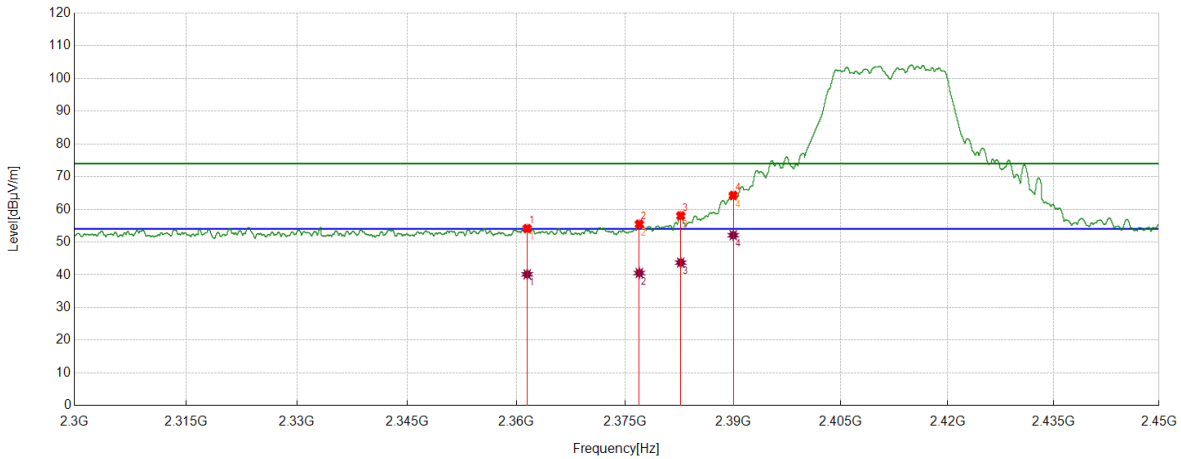
No.	Frequency	Reading Level	Correct Factor	Result	Limit	Margin	Remark
	[MHz]	[dBuV]	[dB/m]	[dBuV/m]	[dBuV/m]	[dB]	
1	2483.5000	43.23	10.64	53.87	74.00	-20.13	Vertical
2	2489.3987	45.27	10.78	56.05	74.00	-17.95	Vertical
3	2493.2242	45.76	10.77	56.53	74.00	-17.47	Vertical
4	2509.3137	44.65	11.08	55.73	74.00	-18.27	Vertical

AV Result:

No.	Frequency	Reading Level	Correct Factor	Result	Limit	Margin	Remark
	[MHz]	[dBuV]	[dB/m]	[dBuV/m]	[dBuV/m]	[dB]	
1	2483.5000	29.52	10.64	40.16	54.00	-13.84	Vertical
2	2489.3987	29.65	10.78	40.43	54.00	-13.57	Vertical
3	2493.2242	29.47	10.77	40.24	54.00	-13.76	Vertical
4	2509.3137	29.56	11.08	40.64	54.00	-13.36	Vertical

- Note: 1. Peak detector: RBW: 1 MHz, VBW: 3 MHz.
 2. Average detector: RBW: 1 MHz, VBW: 1/T MHz(refer to clause 7.1.).
 3. Measurement = Reading Level + Correct Factor,
 Correct Factor = Antenna Factor + Loss (Cable + Attenuator) – Amplifier Gain.
 4. Only the worst case emission was recorded, if it complies with the limit, the other emissions deemed to comply with the limit.

Test Mode	Channel	Polarization	Verdict
11G	LCH	Horizontal	PASS



PK Result:

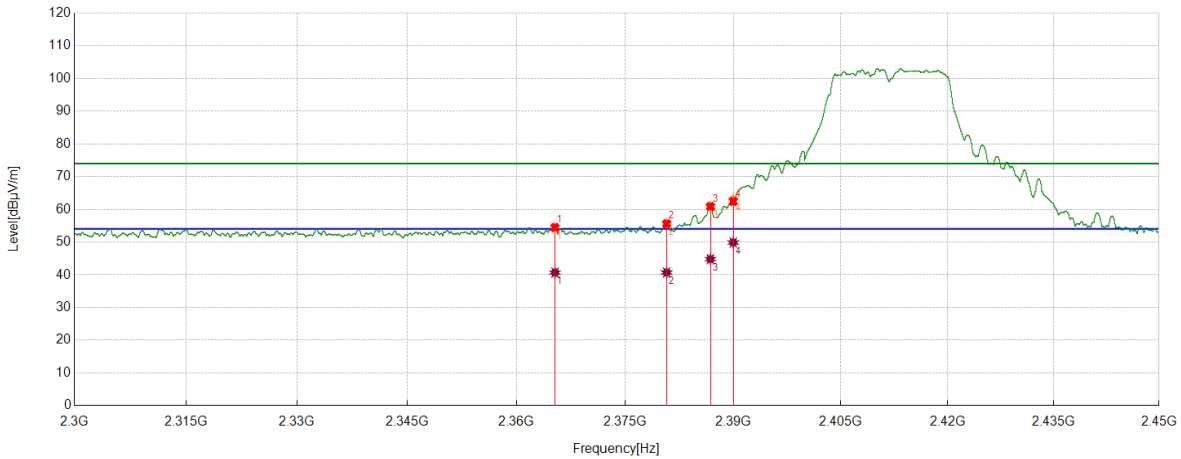
No.	Frequency	Reading Level	Correct Factor	Result	Limit	Margin	Remark
	[MHz]	[dBuV]	[dB/m]	[dBuV/m]	[dBuV/m]	[dB]	
1	2361.4889	44.20	9.94	54.14	74.00	-19.86	Horizontal
2	2376.9596	45.23	10.25	55.48	74.00	-18.52	Horizontal
3	2382.6978	47.73	10.31	58.04	74.00	-15.96	Horizontal
4	2390.0000	53.92	10.35	64.27	74.00	-9.73	Horizontal

AV Result:

No.	Frequency	Reading Level	Correct Factor	Result	Limit	Margin	Remark
	[MHz]	[dBuV]	[dB/m]	[dBuV/m]	[dBuV/m]	[dB]	
1	2361.4889	30.20	9.94	40.14	54.00	-13.86	Horizontal
2	2376.9596	30.28	10.25	40.53	54.00	-13.47	Horizontal
3	2382.6978	33.41	10.31	43.72	54.00	-10.28	Horizontal
4	2390	41.75	10.35	52.10	54.00	-1.90	Horizontal

- Note: 1. Peak detector: RBW: 1 MHz, VBW: 3 MHz.
 2. Average detector: RBW: 1 MHz, VBW: 1/T MHz(refer to clause 7.1.).
 3. Measurement = Reading Level + Correct Factor,
 Correct Factor = Antenna Factor + Loss (Cable + Attenuator) – Amplifier Gain.
 4. Only the worst case emission was recorded, if it complies with the limit, the other emissions deemed to comply with the limit.

Test Mode	Channel	Polarization	Verdict
11G	LCH	Vertical	PASS



PK Result:

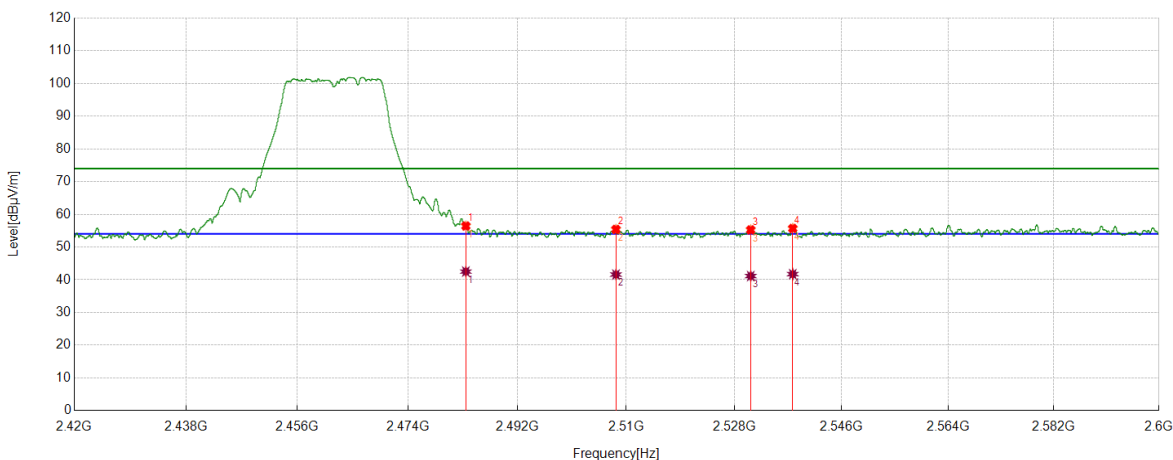
No.	Frequency	Reading Level	Correct Factor	Result	Limit	Margin	Remark
	[MHz]	[dBuV]	[dB/m]	[dBuV/m]	[dBuV/m]	[dB]	
1	2365.3144	44.44	10.02	54.46	74.00	-19.54	Vertical
2	2380.7476	45.29	10.31	55.60	74.00	-18.40	Vertical
3	2386.8234	50.53	10.34	60.87	74.00	-13.13	Vertical
4	2390.0000	52.04	10.35	62.39	74.00	-11.61	Vertical

AV Result:

No.	Frequency	Reading Level	Correct Factor	Result	Limit	Margin	Remark
	[MHz]	[dBuV]	[dB/m]	[dBuV/m]	[dBuV/m]	[dB]	
1	2365.3144	30.65	10.02	40.67	54.00	-13.33	Vertical
2	2380.7476	30.38	10.31	40.69	54.00	-13.31	Vertical
3	2386.8234	34.45	10.34	44.79	54.00	-9.21	Vertical
4	2390	39.51	10.35	49.86	54.00	-4.14	Vertical

- Note: 1. Peak detector: RBW: 1 MHz, VBW: 3 MHz.
 2. Average detector: RBW: 1 MHz, VBW: 1/T MHz(refer to clause 7.1.).
 3. Measurement = Reading Level + Correct Factor,
 Correct Factor = Antenna Factor + Loss (Cable + Attenuator) – Amplifier Gain.
 4. Only the worst case emission was recorded, if it complies with the limit, the other emissions deemed to comply with the limit.

Test Mode	Channel	Polarization	Verdict
11G	HCH	Horizontal	PASS



PK Result:

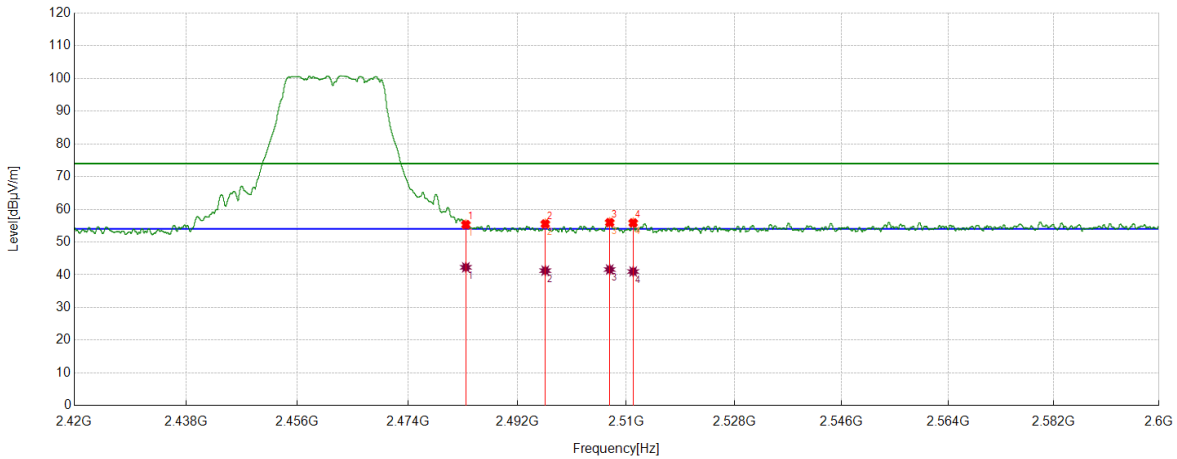
No.	Frequency	Reading Level	Correct Factor	Result	Limit	Margin	Remark
	[MHz]	[dBuV]	[dB/m]	[dBuV/m]	[dBuV/m]	[dB]	
1	2483.5000	45.80	10.64	56.44	74.00	-17.56	Horizontal
2	2508.2785	44.36	11.04	55.40	74.00	-18.60	Horizontal
3	2530.7363	43.92	11.33	55.25	74.00	-18.75	Horizontal
4	2537.7797	44.38	11.31	55.69	74.00	-18.31	Horizontal

AV Result:

No.	Frequency	Reading Level	Correct Factor	Result	Limit	Margin	Remark
	[MHz]	[dBuV]	[dB/m]	[dBuV/m]	[dBuV/m]	[dB]	
1	2483.5000	31.87	10.64	42.51	54.00	-11.49	Horizontal
2	2508.2785	30.56	11.04	41.60	54.00	-12.40	Horizontal
3	2530.7363	29.81	11.33	41.14	54.00	-12.86	Horizontal
4	2537.7797	30.42	11.31	41.73	54.00	-12.27	Horizontal

- Note: 1. Peak detector: RBW: 1 MHz, VBW: 3 MHz.
 2. Average detector: RBW: 1 MHz, VBW: 1/T MHz(refer to clause 7.1.).
 3. Measurement = Reading Level + Correct Factor,
 Correct Factor = Antenna Factor + Loss (Cable + Attenuator) – Amplifier Gain.
 4. Only the worst case emission was recorded, if it complies with the limit, the other emissions deemed to comply with the limit.

Test Mode	Channel	Polarization	Verdict
11G	HCH	Vertical	PASS



PK Result:

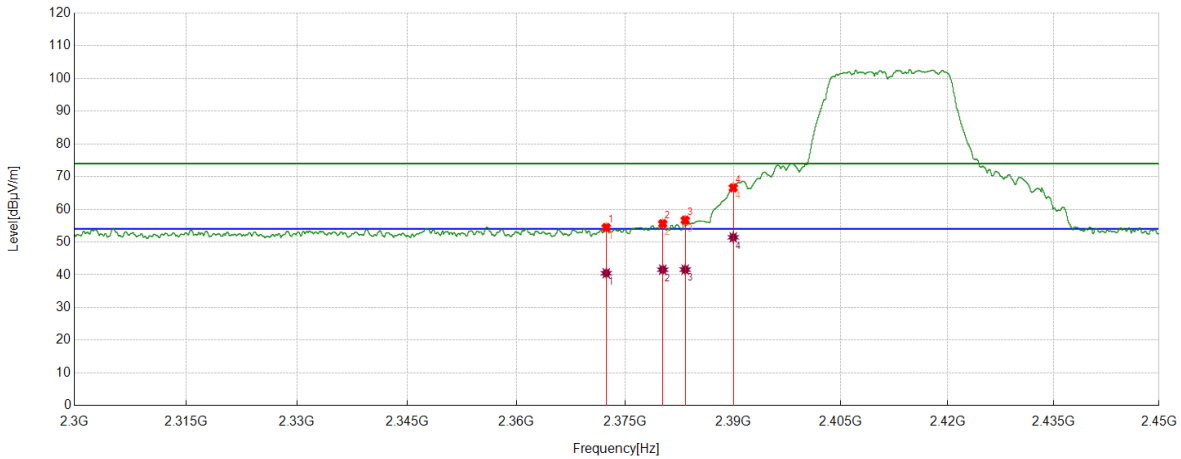
No.	Frequency	Reading Level	Correct Factor	Result	Limit	Margin	Remark
	[MHz]	[dBuV]	[dB/m]	[dBuV/m]	[dBuV/m]	[dB]	
1	2483.5000	44.69	10.64	55.33	74.00	-18.67	Vertical
2	2496.5771	44.79	10.75	55.54	74.00	-18.46	Vertical
3	2507.2434	44.97	10.99	55.96	74.00	-18.04	Vertical
4	2511.1364	44.77	11.09	55.86	74.00	-18.14	Vertical

AV Result:

No.	Frequency	Reading Level	Correct Factor	Result	Limit	Margin	Remark
	[MHz]	[dBuV]	[dB/m]	[dBuV/m]	[dBuV/m]	[dB]	
1	2483.5000	31.64	10.64	42.28	54.00	-11.72	Vertical
2	2496.5771	30.52	10.75	41.27	54.00	-12.73	Vertical
3	2507.2434	30.62	10.99	41.61	54.00	-12.39	Vertical
4	2511.1364	29.91	11.09	41.00	54.00	-13.00	Vertical

- Note: 1. Peak detector: RBW: 1 MHz, VBW: 3 MHz.
 2. Average detector: RBW: 1 MHz, VBW: 1/T MHz(refer to clause 7.1.).
 3. Measurement = Reading Level + Correct Factor,
 Correct Factor = Antenna Factor + Loss (Cable + Attenuator) – Amplifier Gain.
 4. Only the worst case emission was recorded, if it complies with the limit, the other emissions deemed to comply with the limit.

Test Mode	Channel	Polarization	Verdict
11N HT20	LCH	Horizontal	PASS



PK Result:

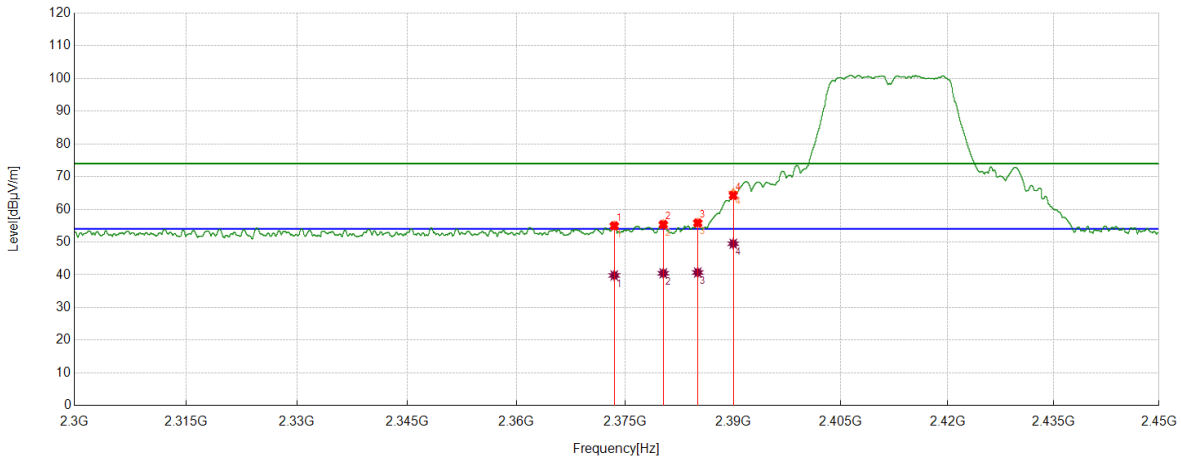
No.	Frequency	Reading Level	Correct Factor	Result	Limit	Margin	Remark
	[MHz]	[dBuV]	[dB/m]	[dBuV/m]	[dBuV/m]	[dB]	
1	2372.384	44.25	10.17	54.42	74.00	-19.58	Horizontal
2	2380.2038	45.32	10.30	55.62	74.00	-18.38	Horizontal
3	2383.3167	46.38	10.31	56.69	74.00	-17.31	Horizontal
4	2390.0000	56.20	10.35	66.55	74.00	-7.45	Horizontal

AV Result:

No.	Frequency	Reading Level	Correct Factor	Result	Limit	Margin	Remark
	[MHz]	[dBuV]	[dB/m]	[dBuV/m]	[dBuV/m]	[dB]	
1	2372.384	30.31	10.17	40.48	54.00	-13.52	Horizontal
2	2380.2038	31.26	10.30	41.56	54.00	-12.44	Horizontal
3	2383.3167	31.27	10.31	41.58	54.00	-12.42	Horizontal
4	2390	41.09	10.35	51.44	54.00	-2.56	Horizontal

- Note: 1. Peak detector: RBW: 1 MHz, VBW: 3 MHz.
 2. Average detector: RBW: 1 MHz, VBW: 1/T MHz(refer to clause 7.1.).
 3. Measurement = Reading Level + Correct Factor,
 Correct Factor = Antenna Factor + Loss (Cable + Attenuator) – Amplifier Gain.
 4. Only the worst case emission was recorded, if it complies with the limit, the other emissions deemed to comply with the limit.

Test Mode	Channel	Polarization	Verdict
11N HT20	LCH	Vertical	PASS



PK Result:

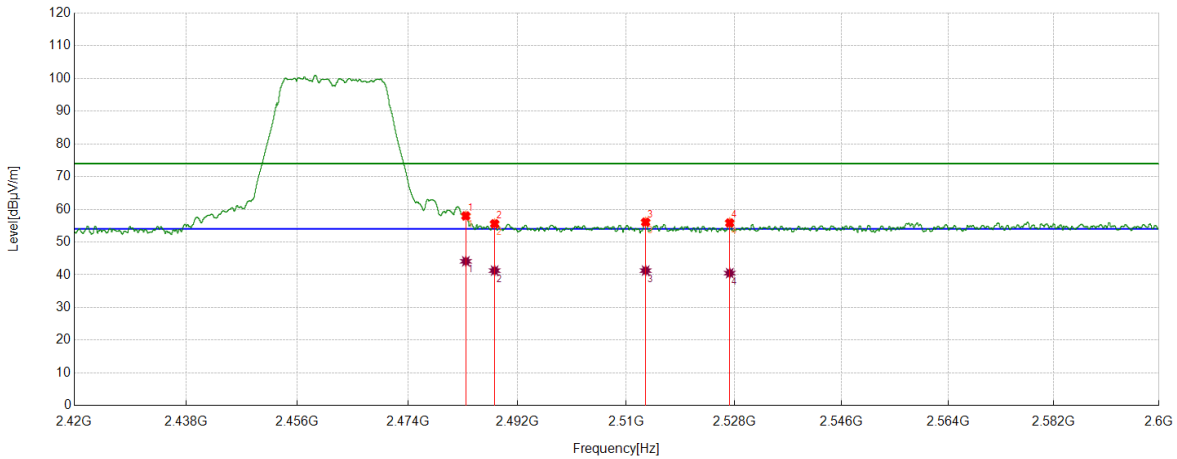
No.	Frequency	Reading Level	Correct Factor	Result	Limit	Margin	Remark
	[MHz]	[dBuV]	[dB/m]	[dBuV/m]	[dBuV/m]	[dB]	
1	2373.4904	44.78	10.18	54.96	74.00	-19.04	Vertical
2	2380.2788	45.07	10.30	55.37	74.00	-18.63	Vertical
3	2385.0606	45.51	10.33	55.84	74.00	-18.16	Vertical
4	2390.0000	53.88	10.35	64.23	74.00	-9.77	Vertical

AV Result:

No.	Frequency	Reading Level	Correct Factor	Result	Limit	Margin	Remark
	[MHz]	[dBuV]	[dB/m]	[dBuV/m]	[dBuV/m]	[dB]	
1	2373.4904	29.62	10.18	39.80	54.00	-14.20	Vertical
2	2380.2788	30.15	10.30	40.45	54.00	-13.55	Vertical
3	2385.0606	30.37	10.33	40.70	54.00	-13.30	Vertical
4	2390	39.14	10.35	49.49	54.00	-4.51	Vertical

- Note: 1. Peak detector: RBW: 1 MHz, VBW: 3 MHz.
 2. Average detector: RBW: 1 MHz, VBW: 1/T MHz(refer to clause 7.1.).
 3. Measurement = Reading Level + Correct Factor,
 Correct Factor = Antenna Factor + Loss (Cable + Attenuator) – Amplifier Gain.
 4. Only the worst case emission was recorded, if it complies with the limit, the other emissions deemed to comply with the limit.

Test Mode	Channel	Polarization	Verdict
11N HT20	HCH	Horizontal	PASS



PK Result:

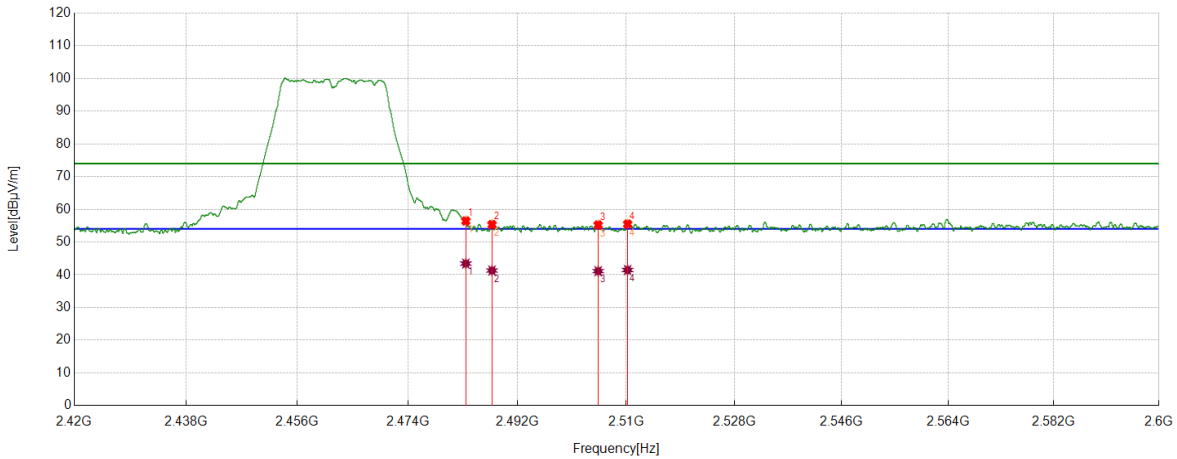
No.	Frequency	Reading Level	Correct Factor	Result	Limit	Margin	Remark
	[MHz]	[dBuV]	[dB/m]	[dBuV/m]	[dBuV/m]	[dB]	
1	2483.5000	47.34	10.64	57.98	74.00	-16.02	Horizontal
2	2488.2285	44.84	10.75	55.59	74.00	-18.41	Horizontal
3	2513.2067	45.01	11.07	56.08	74.00	-17.92	Horizontal
4	2527.2259	44.60	11.24	55.84	74.00	-18.16	Horizontal

AV Result:

No.	Frequency	Reading Level	Correct Factor	Result	Limit	Margin	Remark
	[MHz]	[dBuV]	[dB/m]	[dBuV/m]	[dBuV/m]	[dB]	
1	2483.5000	33.48	10.64	44.12	54.00	-9.88	Horizontal
2	2488.2285	30.53	10.75	41.28	54.00	-12.72	Horizontal
3	2513.2067	30.21	11.07	41.28	54.00	-12.72	Horizontal
4	2527.2259	29.26	11.24	40.50	54.00	-13.50	Horizontal

- Note: 1. Peak detector: RBW: 1 MHz, VBW: 3 MHz.
 2. Average detector: RBW: 1 MHz, VBW: 1/T MHz(refer to clause 7.1.).
 3. Measurement = Reading Level + Correct Factor,
 Correct Factor = Antenna Factor + Loss (Cable + Attenuator) – Amplifier Gain.
 4. Only the worst case emission was recorded, if it complies with the limit, the other emissions deemed to comply with the limit.

Test Mode	Channel	Polarization	Verdict
11N HT20	HCH	Vertical	PASS



PK Result:

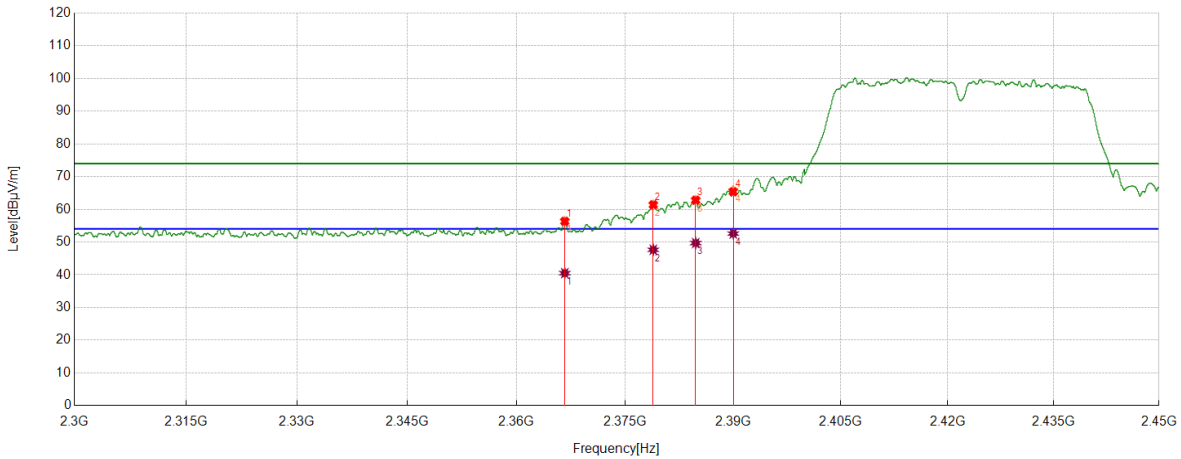
No.	Frequency	Reading Level	Correct Factor	Result	Limit	Margin	Remark
	[MHz]	[dBuV]	[dB/m]	[dBuV/m]	[dBuV/m]	[dB]	
1	2483.5000	45.80	10.64	56.44	74.00	-17.56	Vertical
2	2487.801	44.60	10.74	55.34	74.00	-18.66	Vertical
3	2505.3307	44.29	10.93	55.22	74.00	-18.78	Vertical
4	2510.2138	44.40	11.10	55.50	74.00	-18.50	Vertical

AV Result:

No.	Frequency	Reading Level	Correct Factor	Result	Limit	Margin	Remark
	[MHz]	[dBuV]	[dB/m]	[dBuV/m]	[dBuV/m]	[dB]	
1	2483.5000	32.78	10.64	43.42	54.00	-10.58	Vertical
2	2487.801	30.56	10.74	41.30	54.00	-12.70	Vertical
3	2505.3307	30.18	10.93	41.11	54.00	-12.89	Vertical
4	2510.2138	30.36	11.10	41.46	54.00	-12.54	Vertical

- Note: 1. Peak detector: RBW: 1 MHz, VBW: 3 MHz.
 2. Average detector: RBW: 1 MHz, VBW: 1/T MHz(refer to clause 7.1.).
 3. Measurement = Reading Level + Correct Factor,
 Correct Factor = Antenna Factor + Loss (Cable + Attenuator) – Amplifier Gain.
 4. Only the worst case emission was recorded, if it complies with the limit, the other emissions deemed to comply with the limit.

Test Mode	Channel	Polarization	Verdict
11N HT40	LCH	Horizontal	PASS



PK Result:

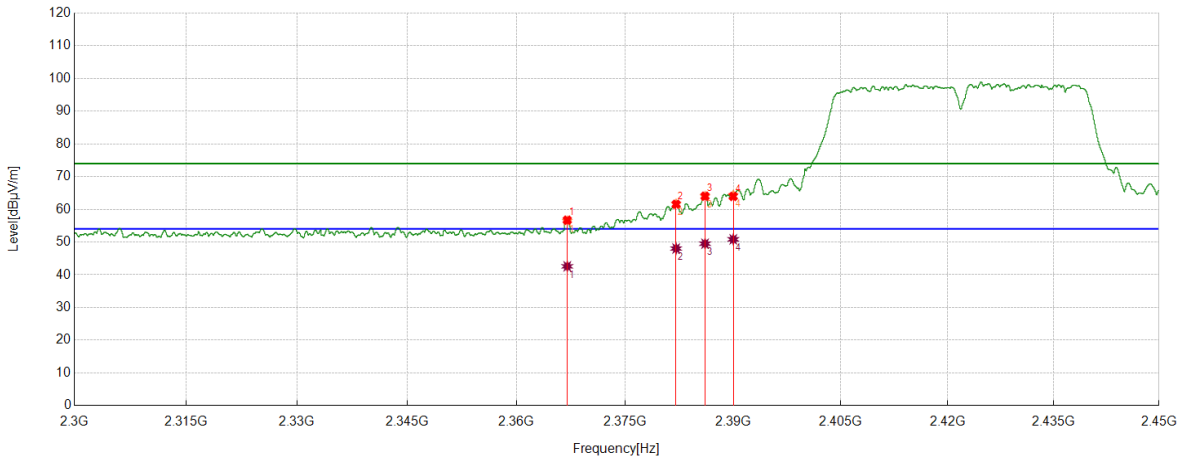
No.	Frequency	Reading Level	Correct Factor	Result	Limit	Margin	Remark
	[MHz]	[dBuV]	[dB/m]	[dBuV/m]	[dBuV/m]	[dB]	
1	2366.6646	46.29	10.05	56.34	74.00	-17.66	Horizontal
2	2378.8911	51.12	10.28	61.40	74.00	-12.60	Horizontal
3	2384.7793	52.47	10.32	62.79	74.00	-11.21	Horizontal
4	2390.0000	55.00	10.35	65.35	74.00	-8.65	Horizontal

AV Result:

No.	Frequency	Reading Level	Correct Factor	Result	Limit	Margin	Remark
	[MHz]	[dBuV]	[dB/m]	[dBuV/m]	[dBuV/m]	[dB]	
1	2366.6646	30.45	10.05	40.50	54.00	-13.50	Horizontal
2	2378.8911	37.36	10.28	47.64	54.00	-6.36	Horizontal
3	2384.7793	39.38	10.32	49.70	54.00	-4.30	Horizontal
4	2390	42.24	10.35	52.59	54.00	-1.41	Horizontal

- Note: 1. Peak detector: RBW: 1 MHz, VBW: 3 MHz.
 2. Average detector: RBW: 1 MHz, VBW: 1/T MHz(refer to clause 7.1.).
 3. Measurement = Reading Level + Correct Factor,
 Correct Factor = Antenna Factor + Loss (Cable + Attenuator) – Amplifier Gain.
 4. Only the worst case emission was recorded, if it complies with the limit, the other emissions deemed to comply with the limit.

Test Mode	Channel	Polarization	Verdict
11N HT40	LCH	Vertical	PASS



PK Result:

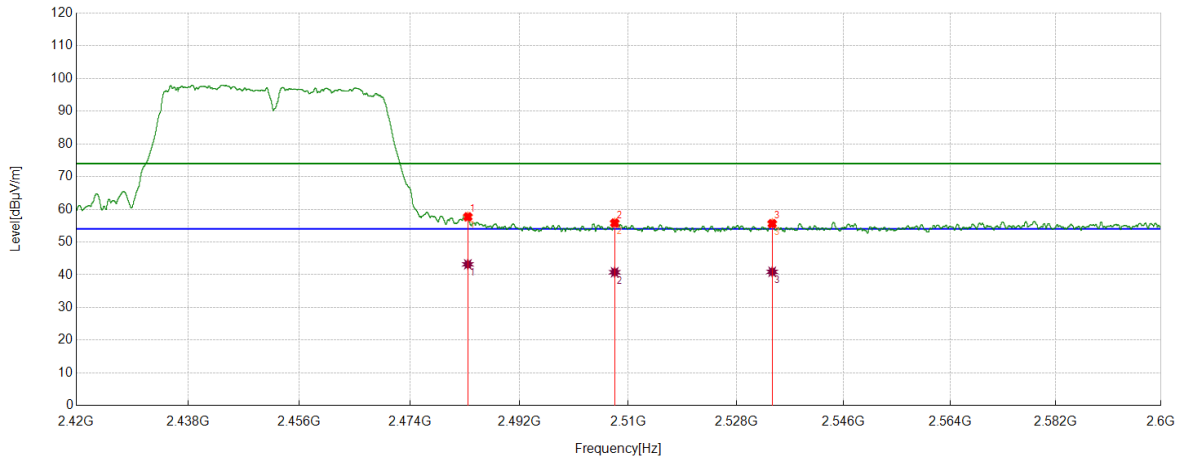
No.	Frequency	Reading Level	Correct Factor	Result	Limit	Margin	Remark
	[MHz]	[dBuV]	[dB/m]	[dBuV/m]	[dBuV/m]	[dB]	
1	2367.0021	46.64	10.06	56.70	74.00	-17.30	Vertical
2	2382.0603	51.23	10.31	61.54	74.00	-12.46	Vertical
3	2386.0733	53.69	10.33	64.02	74.00	-9.98	Vertical
4	2390.0000	53.59	10.35	63.94	74.00	-10.06	Vertical

AV Result:

No.	Frequency	Reading Level	Correct Factor	Result	Limit	Margin	Remark
	[MHz]	[dBuV]	[dB/m]	[dBuV/m]	[dBuV/m]	[dB]	
1	2367.0021	32.52	10.06	42.58	54.00	-11.42	Vertical
2	2382.0603	37.71	10.31	48.02	54.00	-5.98	Vertical
3	2386.0733	39.17	10.33	49.50	54.00	-4.50	Vertical
4	2390	40.48	10.35	50.83	54.00	-3.17	Vertical

- Note: 1. Peak detector: RBW: 1 MHz, VBW: 3 MHz.
 2. Average detector: RBW: 1 MHz, VBW: 1/T MHz(refer to clause 7.1.).
 3. Measurement = Reading Level + Correct Factor,
 Correct Factor = Antenna Factor + Loss (Cable + Attenuator) – Amplifier Gain.
 4. Only the worst case emission was recorded, if it complies with the limit, the other emissions deemed to comply with the limit.

Test Mode	Channel	Polarization	Verdict
11N HT40	HCH	Horizontal	PASS



PK Result:

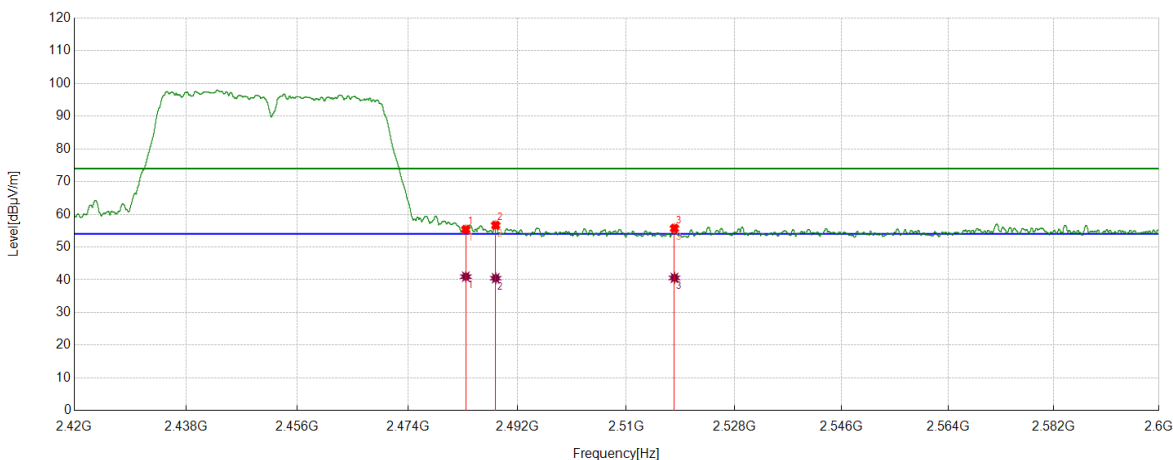
No.	Frequency	Reading Level	Correct Factor	Result	Limit	Margin	Remark
	[MHz]	[dBuV]	[dB/m]	[dBuV/m]	[dBuV/m]	[dB]	
1	2483.5000	47.07	10.64	57.71	74.00	-16.29	Horizontal
2	2507.7385	44.79	11.02	55.81	74.00	-18.19	Horizontal
3	2533.9992	44.31	11.32	55.63	74.00	-18.37	Horizontal

AV Result:

No.	Frequency	Reading Level	Correct Factor	Result	Limit	Margin	Remark
	[MHz]	[dBuV]	[dB/m]	[dBuV/m]	[dBuV/m]	[dB]	
1	2483.5000	32.55	10.64	43.19	54.00	-10.81	Horizontal
2	2507.7385	29.76	11.02	40.78	54.00	-13.22	Horizontal
3	2533.9992	29.59	11.32	40.91	54.00	-13.09	Horizontal

- Note: 1. Peak detector: RBW: 1 MHz, VBW: 3 MHz.
 2. Average detector: RBW: 1 MHz, VBW: 1/T MHz(refer to clause 7.1.).
 3. Measurement = Reading Level + Correct Factor,
 Correct Factor = Antenna Factor + Loss (Cable + Attenuator) – Amplifier Gain.
 4. Only the worst case emission was recorded, if it complies with the limit, the other emissions deemed to comply with the limit.

Test Mode	Channel	Polarization	Verdict
11N HT40	HCH	Vertical	PASS



PK Result:

No.	Frequency	Reading Level	Correct Factor	Result	Limit	Margin	Remark
	[MHz]	[dBuV]	[dB/m]	[dBuV/m]	[dBuV/m]	[dB]	
1	2483.5000	44.73	10.64	55.37	74.00	-18.63	Vertical
2	2488.4086	45.90	10.75	56.65	74.00	-17.35	Vertical
3	2517.9998	44.71	11.02	55.73	74.00	-18.27	Vertical

AV Result:

No.	Frequency	Reading Level	Correct Factor	Result	Limit	Margin	Remark
	[MHz]	[dBuV]	[dB/m]	[dBuV/m]	[dBuV/m]	[dB]	
1	2483.5000	30.32	10.64	40.96	54.00	-13.04	Vertical
2	2488.4086	29.73	10.75	40.48	54.00	-13.52	Vertical
3	2517.9998	29.56	11.02	40.58	54.00	-13.42	Vertical

- Note: 1. Peak detector: RBW: 1 MHz, VBW: 3 MHz.
 2. Average detector: RBW: 1 MHz, VBW: 1/T MHz(refer to clause 7.1.).
 3. Measurement = Reading Level + Correct Factor,
 Correct Factor = Antenna Factor + Loss (Cable + Attenuator) – Amplifier Gain.
 4. Only the worst case emission was recorded, if it complies with the limit, the other emissions deemed to comply with the limit.

8.4. SPURIOUS EMISSIONS

TEST RESULTS TABLE

1) For 1GHz~18GHz

Test Mode	Channel	Puw(dBm)	Verdict
11B	LCH	<Limit	PASS
	MCH	<Limit	PASS
	HCH	<Limit	PASS
11G	LCH	<Limit	PASS
	MCH	<Limit	PASS
	HCH	<Limit	PASS
11N HT20	LCH	<Limit	PASS
	MCH	<Limit	PASS
	HCH	<Limit	PASS
11N HT40	LCH	<Limit	PASS
	MCH	<Limit	PASS
	HCH	<Limit	PASS

Note: The EUT can transmit with the docker or without the docker, both the two conditions were tested, the condition without the docker was the worse case and included in this report.

2) For 9kHz~30MHz

Test Mode	Channel	Puw(dBm)	Verdict
11B	MCH	<Limit	PASS

Note:

1. Through pre-testing all the test modes and test channels, but only the data of the worst case is included in this test report.
2. The EUT can transmit with the docker or without the docker, both the two conditions were tested, the condition without the docker was the worse case and included in this report.

3) For 30MHz~1GHz

Test Mode	Channel	Puw(dBm)	Verdict
11B	MCH	<Limit	PASS

Note:

1. Through pre-testing all the test modes and test channels, but only the data of the worst case is included in this test report.
2. The EUT can transmit with the docker or without the docker, both the two conditions were tested, the condition without the docker was the worse case and included in this report.

4) For 18GHz~26.5GHz

Test Mode	Channel	Puw(dBm)	Verdict
11B	MCH	<Limit	PASS

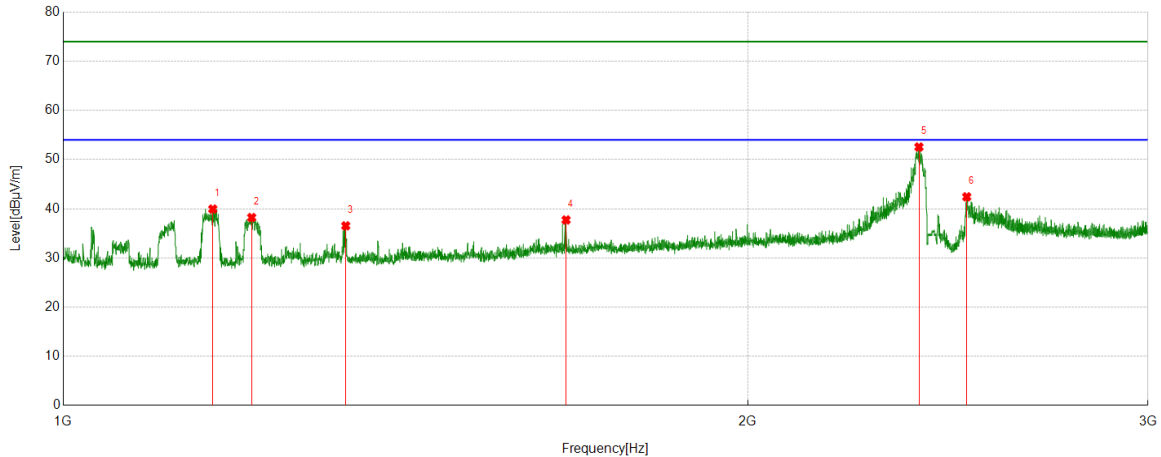
Note:

1. Through pre-testing all the test modes and test channels, but only the data of the worst case is included in this test report.
2. The EUT can transmit with the docker or without the docker, both the two conditions were tested, the condition without the docker was the worse case and included in this report.

Part 1: 1GHz~3GHz

HARMONICS AND SPURIOUS EMISSIONS

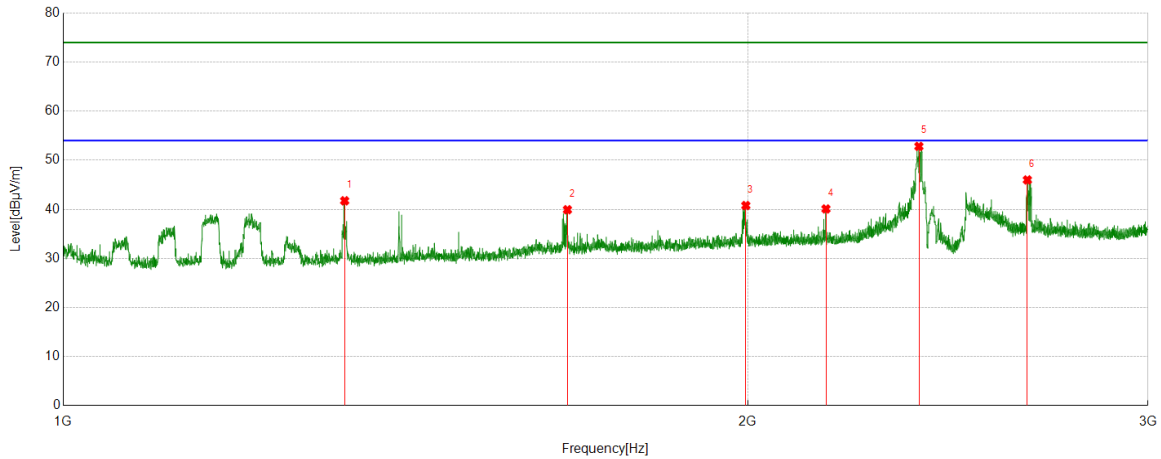
Test Mode	Channel	Polarization	Verdict
11B	LCH	Horizontal	PASS



No.	Frequency	Reading Level	Correct Factor	Result	Limit	Margin	Remark
	[MHz]	[dBuV]	[dB/m]	[dBuV/m]	[dBuV/m]	[dB]	
1	1163.5204	61.38	-21.44	39.94	74.00	-34.06	Horizontal
2	1210.2763	59.88	-21.66	38.22	74.00	-35.78	Horizontal
3	1331.2914	57.12	-20.59	36.53	74.00	-37.47	Horizontal
4	1664.083	55.97	-18.24	37.73	74.00	-36.27	Horizontal
5	2378.9224	66.79	-14.24	52.55	74.00	-21.45	Horizontal
6	2496.9371	55.87	-13.44	42.43	74.00	-31.57	Horizontal

- Note: 1. Measurement = Reading Level + Correct Factor,
Correct Factor = Antenna Factor + Loss (Cable + Filter) – Amplifier Gain.
2. If Peak Result complies with AV limit, AV Result is deemed to comply with AV limit.
3. Test setup: RBW: 1 MHz, VBW: 3 MHz, Sweep time: auto.
4. Peak: Peak detector.
5. For below 3GHz part, filter losses were only considered in the spurious frequency bands and the authorized band was not corrected for Band Reject Filter losses.
6. Only the worst case emission was recorded, if it complies with the limit, the other emissions deemed to comply with the limit.

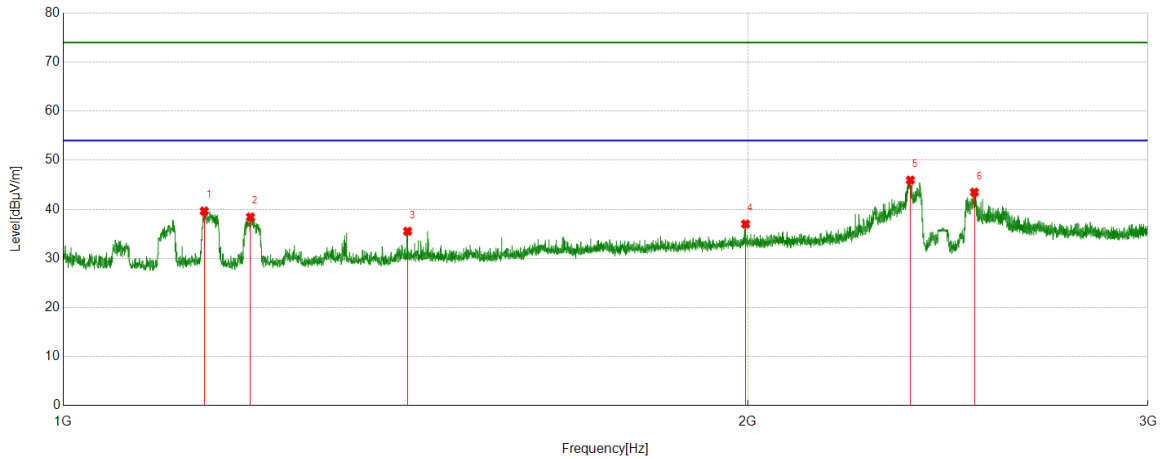
Test Mode	Channel	Polarization	Verdict
11B	LCH	Vertical	PASS



No.	Frequency	Reading Level	Correct Factor	Result	Limit	Margin	Remark
	[MHz]	[dBuV]	[dB/m]	[dBuV/m]	[dBuV/m]	[dB]	
1	1329.7912	62.32	-20.58	41.74	74.00	-32.26	Vertical
2	1666.3333	58.11	-18.19	39.92	74.00	-34.08	Vertical
3	1996.3745	57.08	-16.31	40.77	74.00	-33.23	Vertical
4	2165.1456	56.06	-15.98	40.08	74.00	-33.92	Vertical
5	2378.9224	67.06	-14.24	52.82	74.00	-21.18	Vertical
6	2654.9569	59.20	-13.21	45.99	74.00	-28.01	Vertical

- Note: 1. Measurement = Reading Level + Correct Factor,
Correct Factor = Antenna Factor + Loss (Cable + Filter) – Amplifier Gain.
2. If Peak Result complies with AV limit, AV Result is deemed to comply with AV limit.
3. Test setup: RBW: 1 MHz, VBW: 3 MHz, Sweep time: auto.
4. Peak: Peak detector.
5. For below 3GHz part, filter losses were only considered in the spurious frequency bands and the authorized band was not corrected for Band Reject Filter losses.
6. Only the worst case emission was recorded, if it complies with the limit, the other emissions deemed to comply with the limit.

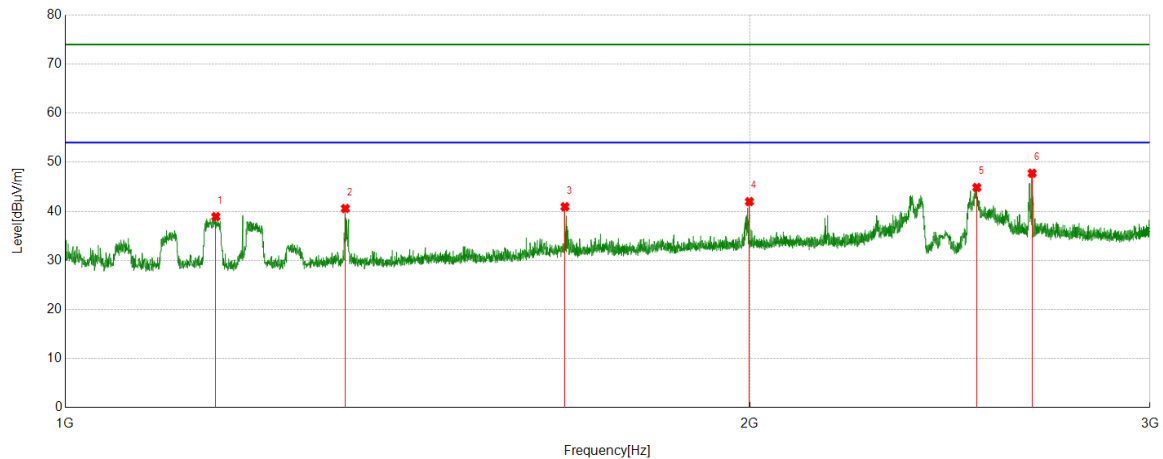
Test Mode	Channel	Polarization	Verdict
11B	MCH	Horizontal	PASS



No.	Frequency	Reading Level	Correct Factor	Result	Limit	Margin	Remark
	[MHz]	[dBuV]	[dB/m]	[dBuV/m]	[dBuV/m]	[dB]	
1	1153.5192	60.99	-21.35	39.64	74.00	-34.36	Horizontal
2	1208.7761	60.14	-21.71	38.43	74.00	-35.57	Horizontal
3	1417.3022	55.79	-20.26	35.53	74.00	-38.47	Horizontal
4	1995.8745	53.31	-16.31	37.00	74.00	-37.00	Horizontal
5	2358.4198	60.74	-14.79	45.95	74.00	-28.05	Horizontal
6	2516.4396	57.17	-13.68	43.49	74.00	-30.51	Horizontal

- Note: 1. Measurement = Reading Level + Correct Factor,
Correct Factor = Antenna Factor + Loss (Cable + Filter) – Amplifier Gain.
2. If Peak Result complies with AV limit, AV Result is deemed to comply with AV limit.
3. Test setup: RBW: 1 MHz, VBW: 3 MHz, Sweep time: auto.
4. Peak: Peak detector.
5. For below 3GHz part, filter losses were only considered in the spurious frequency bands and the authorized band was not corrected for Band Reject Filter losses.
6. Only the worst case emission was recorded, if it complies with the limit, the other emissions deemed to comply with the limit.

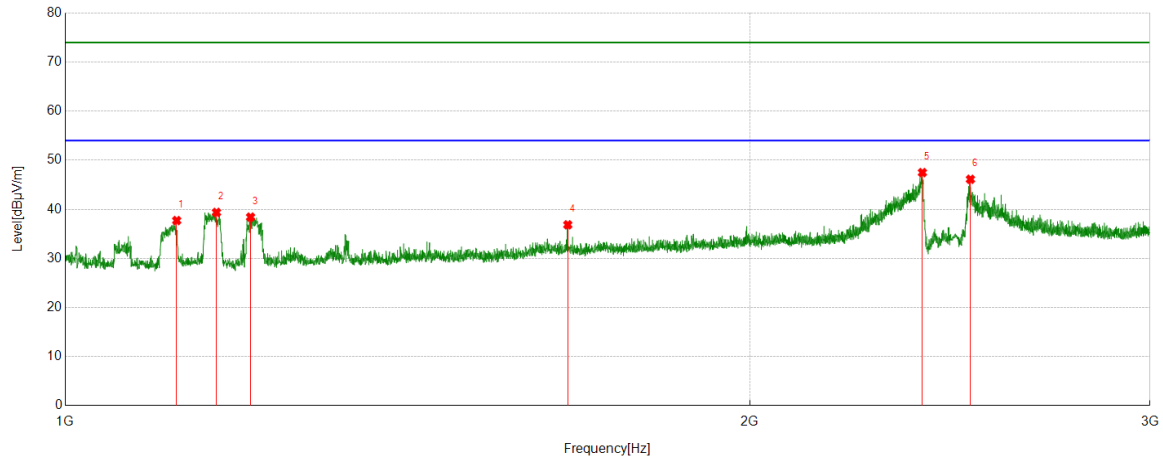
Test Mode	Channel	Polarization	Verdict
11B	MCH	Vertical	PASS



No.	Frequency	Reading Level	Correct Factor	Result	Limit	Margin	Remark
	[MHz]	[dBuV]	[dB/m]	[dBuV/m]	[dBuV/m]	[dB]	
1	1164.7706	60.36	-21.45	38.91	74.00	-35.09	Vertical
2	1328.041	61.17	-20.60	40.57	74.00	-33.43	Vertical
3	1658.8324	59.26	-18.33	40.93	74.00	-33.07	Vertical
4	1999.625	58.26	-16.28	41.98	74.00	-32.02	Vertical
5	2517.4397	58.57	-13.71	44.86	74.00	-29.14	Vertical
6	2662.4578	60.99	-13.23	47.76	74.00	-26.24	Vertical

- Note: 1. Measurement = Reading Level + Correct Factor,
Correct Factor = Antenna Factor + Loss (Cable + Filter) – Amplifier Gain.
2. If Peak Result complies with AV limit, AV Result is deemed to comply with AV limit.
3. Test setup: RBW: 1 MHz, VBW: 3 MHz, Sweep time: auto.
4. Peak: Peak detector.
5. For below 3GHz part, filter losses were only considered in the spurious frequency bands and the authorized band was not corrected for Band Reject Filter losses.
6. Only the worst case emission was recorded, if it complies with the limit, the other emissions deemed to comply with the limit.

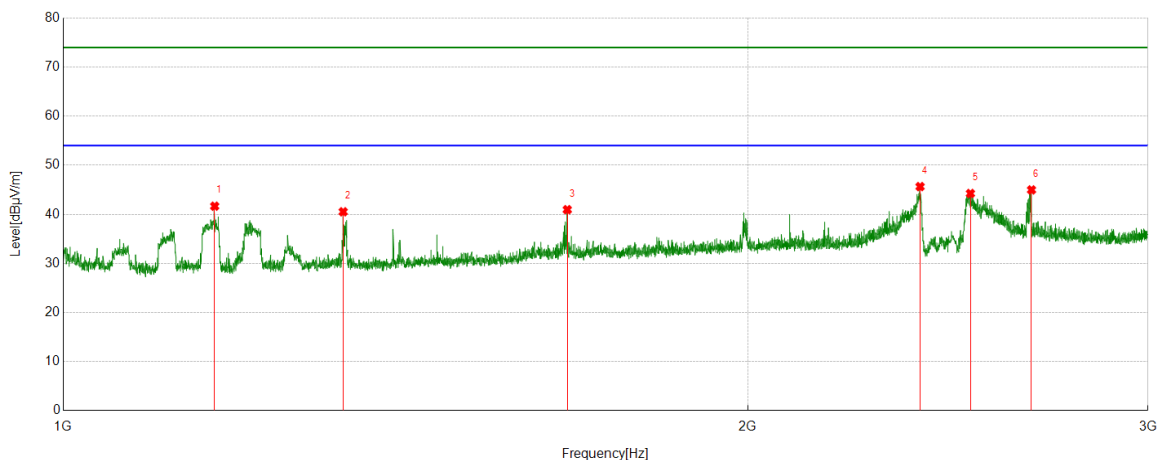
Test Mode	Channel	Polarization	Verdict
11B	HCH	Horizontal	PASS



No.	Frequency	Reading Level	Correct Factor	Result	Limit	Margin	Remark
	[MHz]	[dBuV]	[dB/m]	[dBuV/m]	[dBuV/m]	[dB]	
1	1119.5149	59.09	-21.37	37.72	74.00	-36.28	Horizontal
2	1165.5207	60.83	-21.46	39.37	74.00	-34.63	Horizontal
3	1206.5258	60.20	-21.78	38.42	74.00	-35.58	Horizontal
4	1663.5829	55.10	-18.25	36.85	74.00	-37.15	Horizontal
5	2382.4228	61.71	-14.22	47.49	74.00	-26.51	Horizontal
6	2501.1876	59.55	-13.43	46.12	74.00	-27.88	Horizontal

- Note: 1. Measurement = Reading Level + Correct Factor,
Correct Factor = Antenna Factor + Loss (Cable + Filter) – Amplifier Gain.
2. If Peak Result complies with AV limit, AV Result is deemed to comply with AV limit.
3. Test setup: RBW: 1 MHz, VBW: 3 MHz, Sweep time: auto.
4. Peak: Peak detector.
5. For below 3GHz part, filter losses were only considered in the spurious frequency bands and the authorized band was not corrected for Band Reject Filter losses.
6. Only the worst case emission was recorded, if it complies with the limit, the other emissions deemed to comply with the limit.

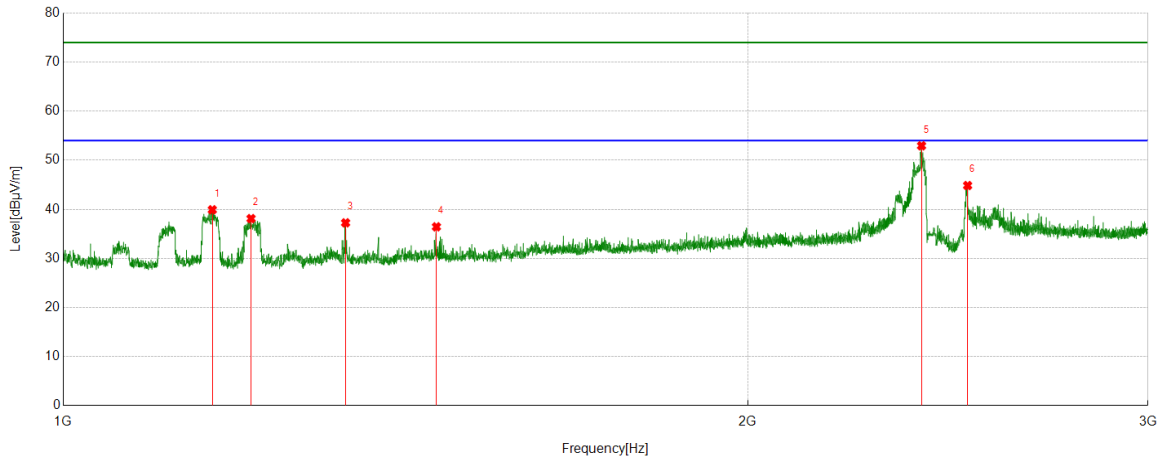
Test Mode	Channel	Polarization	Verdict
11B	HCH	Vertical	PASS



No.	Frequency	Reading Level	Correct Factor	Result	Limit	Margin	Remark
	[MHz]	[dBuV]	[dB/m]	[dBuV/m]	[dBuV/m]	[dB]	
1	1165.7707	63.13	-21.47	41.66	74.00	-32.34	Vertical
2	1327.791	61.12	-20.60	40.52	74.00	-33.48	Vertical
3	1666.0833	59.15	-18.20	40.95	74.00	-33.05	Vertical
4	2381.6727	59.87	-14.22	45.65	74.00	-28.35	Vertical
5	2506.1883	57.73	-13.48	44.25	74.00	-29.75	Vertical
6	2666.2083	58.23	-13.25	44.98	74.00	-29.02	Vertical

- Note: 1. Measurement = Reading Level + Correct Factor,
Correct Factor = Antenna Factor + Loss (Cable + Filter) – Amplifier Gain.
2. If Peak Result complies with AV limit, AV Result is deemed to comply with AV limit.
3. Test setup: RBW: 1 MHz, VBW: 3 MHz, Sweep time: auto.
4. Peak: Peak detector.
5. For below 3GHz part, filter losses were only considered in the spurious frequency bands and the authorized band was not corrected for Band Reject Filter losses.
6. Only the worst case emission was recorded, if it complies with the limit, the other emissions deemed to comply with the limit.

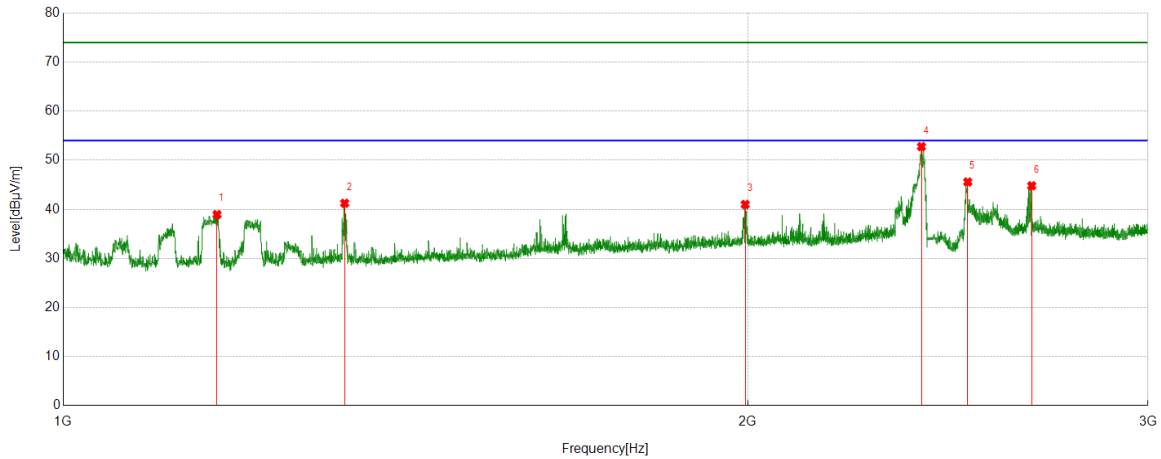
Test Mode	Channel	Polarization	Verdict
11G	LCH	Horizontal	PASS



No.	Frequency	Reading Level	Correct Factor	Result	Limit	Margin	Remark
	[MHz]	[dBuV]	[dB/m]	[dBuV/m]	[dBuV/m]	[dB]	
1	1163.0204	61.34	-21.43	39.91	74.00	-34.09	Horizontal
2	1209.5262	59.80	-21.69	38.11	74.00	-35.89	Horizontal
3	1331.0414	57.84	-20.59	37.25	74.00	-36.75	Horizontal
4	1459.3074	56.07	-19.63	36.44	74.00	-37.56	Horizontal
5	2385.1731	67.18	-14.23	52.95	74.00	-21.05	Horizontal
6	2499.1874	58.27	-13.42	44.85	74.00	-29.15	Horizontal

- Note: 1. Measurement = Reading Level + Correct Factor,
Correct Factor = Antenna Factor + Loss (Cable + Filter) – Amplifier Gain.
2. If Peak Result complies with AV limit, AV Result is deemed to comply with AV limit.
3. Test setup: RBW: 1 MHz, VBW: 3 MHz, Sweep time: auto.
4. Peak: Peak detector.
5. For below 3GHz part, filter losses were only considered in the spurious frequency bands and the authorized band was not corrected for Band Reject Filter losses.
6. Only the worst case emission was recorded, if it complies with the limit, the other emissions deemed to comply with the limit.

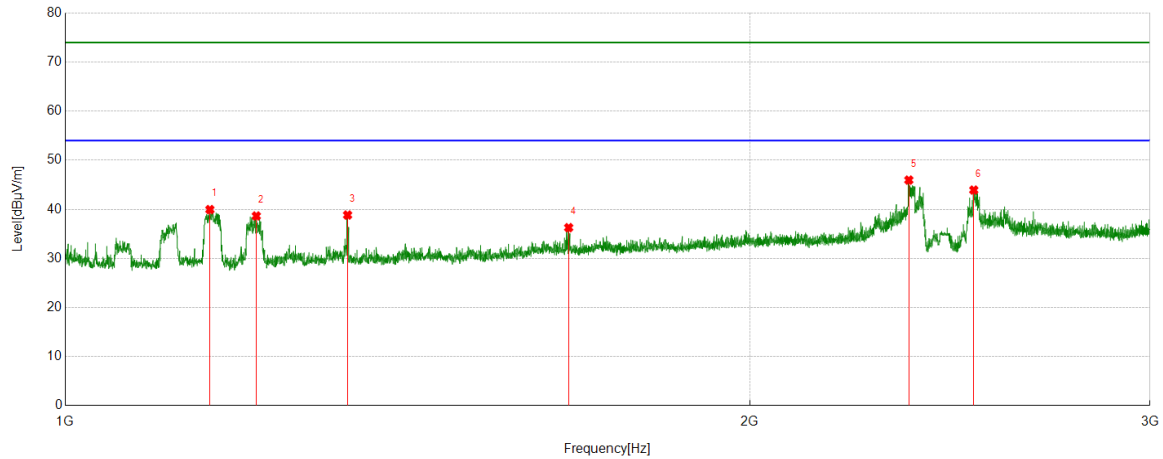
Test Mode	Channel	Polarization	Verdict
11G	LCH	Vertical	PASS



No.	Frequency	Reading Level	Correct Factor	Result	Limit	Margin	Remark
	[MHz]	[dBuV]	[dB/m]	[dBuV/m]	[dBuV/m]	[dB]	
1	1168.5211	60.43	-21.49	38.94	74.00	-35.06	Vertical
2	1329.7912	61.82	-20.58	41.24	74.00	-32.76	Vertical
3	1995.1244	57.31	-16.32	40.99	74.00	-33.01	Vertical
4	2384.9231	67.01	-14.23	52.78	74.00	-21.22	Vertical
5	2499.4374	58.99	-13.42	45.57	74.00	-28.43	Vertical
6	2666.7083	58.04	-13.24	44.80	74.00	-29.20	Vertical

- Note: 1. Measurement = Reading Level + Correct Factor,
Correct Factor = Antenna Factor + Loss (Cable + Filter) – Amplifier Gain.
2. If Peak Result complies with AV limit, AV Result is deemed to comply with AV limit.
3. Test setup: RBW: 1 MHz, VBW: 3 MHz, Sweep time: auto.
4. Peak: Peak detector.
5. For below 3GHz part, filter losses were only considered in the spurious frequency bands and the authorized band was not corrected for Band Reject Filter losses.
6. Only the worst case emission was recorded, if it complies with the limit, the other emissions deemed to comply with the limit.

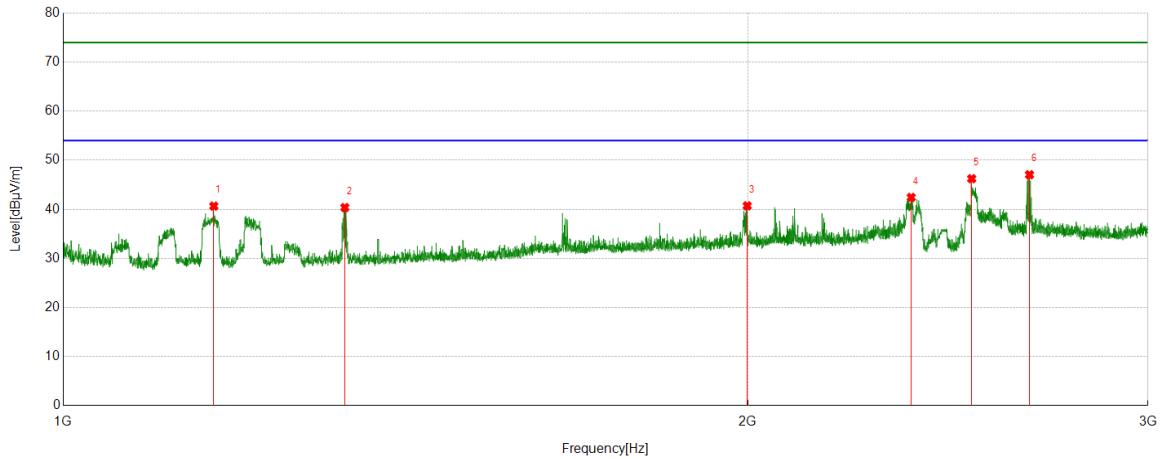
Test Mode	Channel	Polarization	Verdict
11G	MCH	Horizontal	PASS



No.	Frequency	Reading Level	Correct Factor	Result	Limit	Margin	Remark
	[MHz]	[dBuV]	[dB/m]	[dBuV/m]	[dBuV/m]	[dB]	
1	1157.7697	61.34	-21.39	39.95	74.00	-34.05	Horizontal
2	1213.5267	60.20	-21.55	38.65	74.00	-35.35	Horizontal
3	1331.0414	59.43	-20.59	38.84	74.00	-35.16	Horizontal
4	1665.0831	54.49	-18.22	36.27	74.00	-37.73	Horizontal
5	2349.9187	60.72	-14.76	45.96	74.00	-28.04	Horizontal
6	2509.6887	57.45	-13.52	43.93	74.00	-30.07	Horizontal

- Note: 1. Measurement = Reading Level + Correct Factor,
Correct Factor = Antenna Factor + Loss (Cable + Filter) – Amplifier Gain.
2. If Peak Result complies with AV limit, AV Result is deemed to comply with AV limit.
3. Test setup: RBW: 1 MHz, VBW: 3 MHz, Sweep time: auto.
4. Peak: Peak detector.
5. For below 3GHz part, filter losses were only considered in the spurious frequency bands and the authorized band was not corrected for Band Reject Filter losses.
6. Only the worst case emission was recorded, if it complies with the limit, the other emissions deemed to comply with the limit.

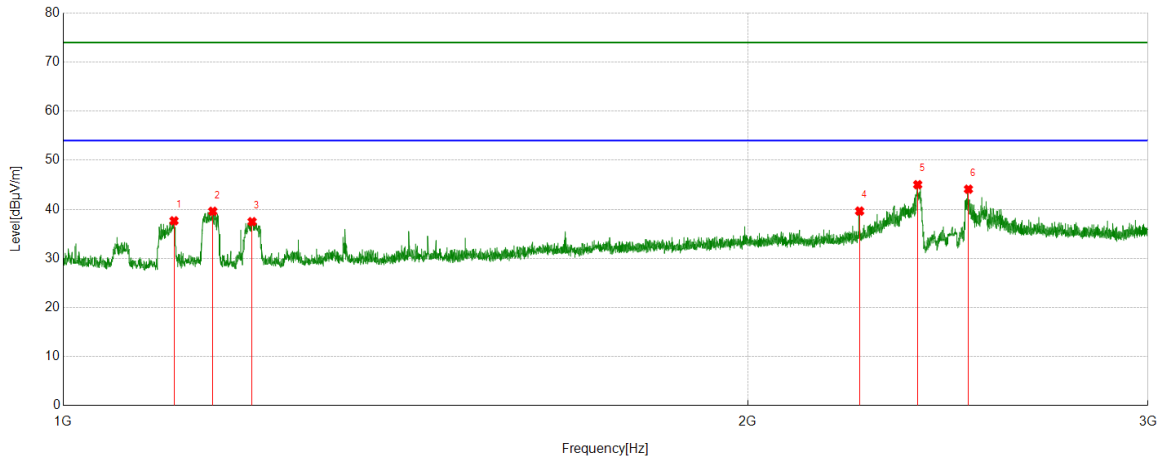
Test Mode	Channel	Polarization	Verdict
11G	MCH	Vertical	PASS



No.	Frequency	Reading Level	Correct Factor	Result	Limit	Margin	Remark
	[MHz]	[dBuV]	[dB/m]	[dBuV/m]	[dBuV/m]	[dB]	
1	1164.7706	62.11	-21.45	40.66	74.00	-33.34	Vertical
2	1330.0413	60.95	-20.58	40.37	74.00	-33.63	Vertical
3	1999.1249	57.01	-16.29	40.72	74.00	-33.28	Vertical
4	2360.4201	57.20	-14.77	42.43	74.00	-31.57	Vertical
5	2509.4387	59.76	-13.51	46.25	74.00	-27.75	Vertical
6	2660.7076	60.28	-13.23	47.05	74.00	-26.95	Vertical

- Note: 1. Measurement = Reading Level + Correct Factor,
Correct Factor = Antenna Factor + Loss (Cable + Filter) – Amplifier Gain.
2. If Peak Result complies with AV limit, AV Result is deemed to comply with AV limit.
3. Test setup: RBW: 1 MHz, VBW: 3 MHz, Sweep time: auto.
4. Peak: Peak detector.
5. For below 3GHz part, filter losses were only considered in the spurious frequency bands and the authorized band was not corrected for Band Reject Filter losses.
6. Only the worst case emission was recorded, if it complies with the limit, the other emissions deemed to comply with the limit.

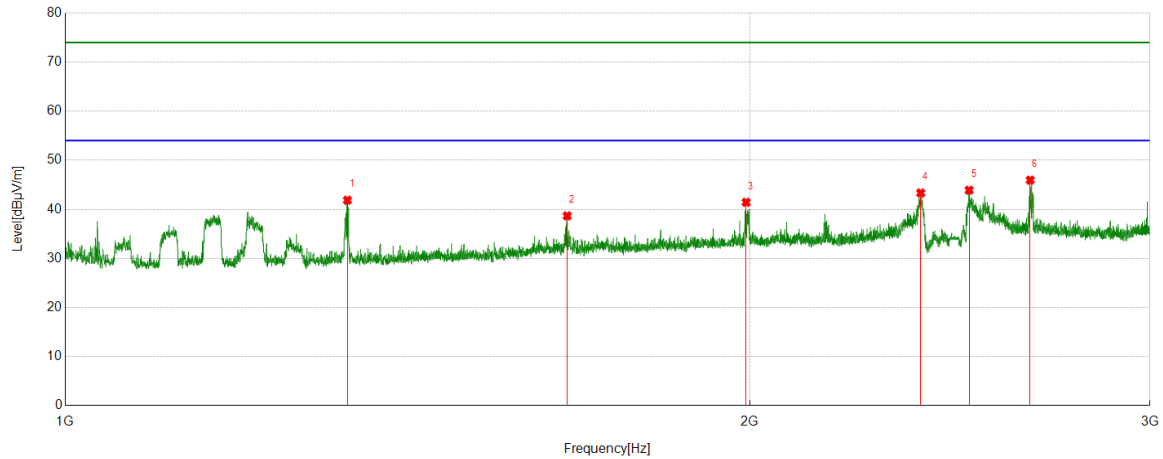
Test Mode	Channel	Polarization	Verdict
11G	HCH	Horizontal	PASS



No.	Frequency	Reading Level	Correct Factor	Result	Limit	Margin	Remark
	[MHz]	[dBuV]	[dB/m]	[dBuV/m]	[dBuV/m]	[dB]	
1	1118.7648	59.06	-21.40	37.66	74.00	-36.34	Horizontal
2	1163.5204	61.04	-21.44	39.60	74.00	-34.40	Horizontal
3	1210.7763	59.13	-21.65	37.48	74.00	-36.52	Horizontal
4	2240.155	54.70	-15.06	39.64	74.00	-34.36	Horizontal
5	2375.922	59.32	-14.30	45.02	74.00	-28.98	Horizontal
6	2501.1876	57.53	-13.43	44.10	74.00	-29.90	Horizontal

- Note: 1. Measurement = Reading Level + Correct Factor,
Correct Factor = Antenna Factor + Loss (Cable + Filter) – Amplifier Gain.
2. If Peak Result complies with AV limit, AV Result is deemed to comply with AV limit.
3. Test setup: RBW: 1 MHz, VBW: 3 MHz, Sweep time: auto.
4. Peak: Peak detector.
5. For below 3GHz part, filter losses were only considered in the spurious frequency bands and the authorized band was not corrected for Band Reject Filter losses.
6. Only the worst case emission was recorded, if it complies with the limit, the other emissions deemed to comply with the limit.

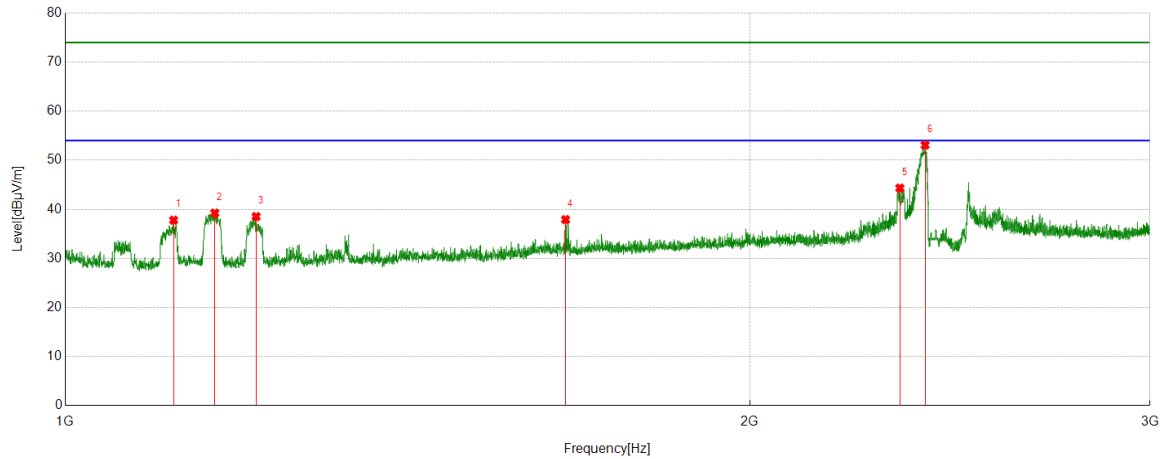
Test Mode	Channel	Polarization	Verdict
11G	HCH	Vertical	PASS



No.	Frequency	Reading Level	Correct Factor	Result	Limit	Margin	Remark
	[MHz]	[dBuV]	[dB/m]	[dBuV/m]	[dBuV/m]	[dB]	
1	1330.7913	62.44	-20.58	41.86	74.00	-32.14	Vertical
2	1662.5828	56.94	-18.27	38.67	74.00	-35.33	Vertical
3	1992.8741	57.76	-16.33	41.43	74.00	-32.57	Vertical
4	2378.4223	57.60	-14.26	43.34	74.00	-30.66	Vertical
5	2497.9372	57.33	-13.43	43.90	74.00	-30.10	Vertical
6	2657.2072	59.17	-13.22	45.95	74.00	-28.05	Vertical

- Note: 1. Measurement = Reading Level + Correct Factor,
Correct Factor = Antenna Factor + Loss (Cable + Filter) – Amplifier Gain.
2. If Peak Result complies with AV limit, AV Result is deemed to comply with AV limit.
3. Test setup: RBW: 1 MHz, VBW: 3 MHz, Sweep time: auto.
4. Peak: Peak detector.
5. For below 3GHz part, filter losses were only considered in the spurious frequency bands and the authorized band was not corrected for Band Reject Filter losses.
6. Only the worst case emission was recorded, if it complies with the limit, the other emissions deemed to comply with the limit.

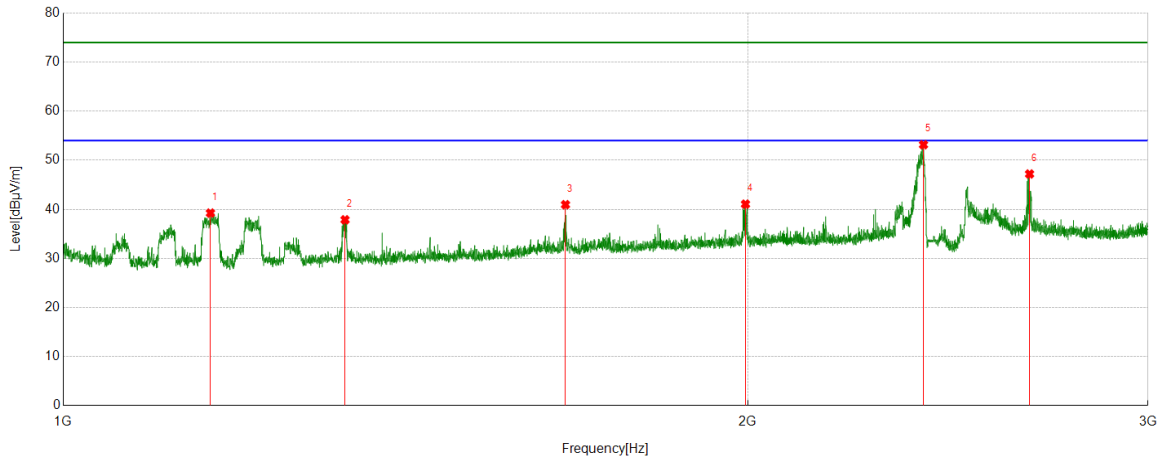
Test Mode	Channel	Polarization	Verdict
11N HT20	LCH	Horizontal	PASS



No.	Frequency	Reading Level	Correct Factor	Result	Limit	Margin	Remark
	[MHz]	[dBuV]	[dB/m]	[dBuV/m]	[dBuV/m]	[dB]	
1	1116.0145	59.26	-21.47	37.79	74.00	-36.21	Horizontal
2	1163.5204	60.68	-21.44	39.24	74.00	-34.76	Horizontal
3	1213.2767	60.10	-21.56	38.54	74.00	-35.46	Horizontal
4	1659.8325	56.23	-18.33	37.90	74.00	-36.10	Horizontal
5	2328.6661	59.36	-15.04	44.32	74.00	-29.68	Horizontal
6	2388.9236	67.33	-14.24	53.09	74.00	-20.91	Horizontal

- Note: 1. Measurement = Reading Level + Correct Factor,
Correct Factor = Antenna Factor + Loss (Cable + Filter) – Amplifier Gain.
2. If Peak Result complies with AV limit, AV Result is deemed to comply with AV limit.
3. Test setup: RBW: 1 MHz, VBW: 3 MHz, Sweep time: auto.
4. Peak: Peak detector.
5. For below 3GHz part, filter losses were only considered in the spurious frequency bands and the authorized band was not corrected for Band Reject Filter losses.
6. Only the worst case emission was recorded, if it complies with the limit, the other emissions deemed to comply with the limit.

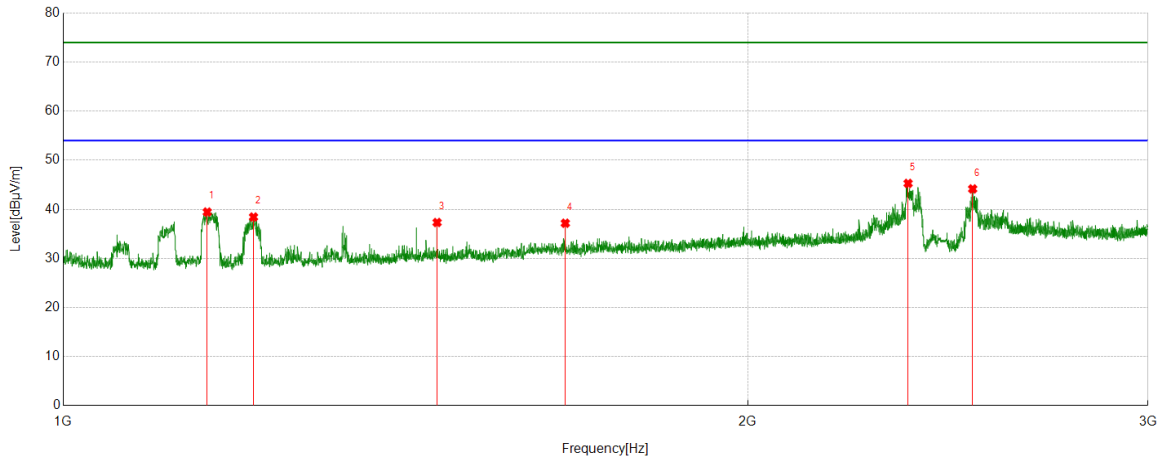
Test Mode	Channel	Polarization	Verdict
11N HT20	LCH	Vertical	PASS



No.	Frequency	Reading Level	Correct Factor	Result	Limit	Margin	Remark
	[MHz]	[dBuV]	[dB/m]	[dBuV/m]	[dBuV/m]	[dB]	
1	1160.7701	60.66	-21.42	39.24	74.00	-34.76	Vertical
2	1330.2913	58.45	-20.58	37.87	74.00	-36.13	Vertical
3	1663.0829	59.21	-18.26	40.95	74.00	-33.05	Vertical
4	1995.6245	57.37	-16.31	41.06	74.00	-32.94	Vertical
5	2389.9237	67.40	-14.24	53.16	74.00	-20.84	Vertical
6	2660.9576	60.44	-13.24	47.20	74.00	-26.80	Vertical

- Note: 1. Measurement = Reading Level + Correct Factor,
Correct Factor = Antenna Factor + Loss (Cable + Filter) – Amplifier Gain.
2. If Peak Result complies with AV limit, AV Result is deemed to comply with AV limit.
3. Test setup: RBW: 1 MHz, VBW: 3 MHz, Sweep time: auto.
4. Peak: Peak detector.
5. For below 3GHz part, filter losses were only considered in the spurious frequency bands and the authorized band was not corrected for Band Reject Filter losses.
6. Only the worst case emission was recorded, if it complies with the limit, the other emissions deemed to comply with the limit.

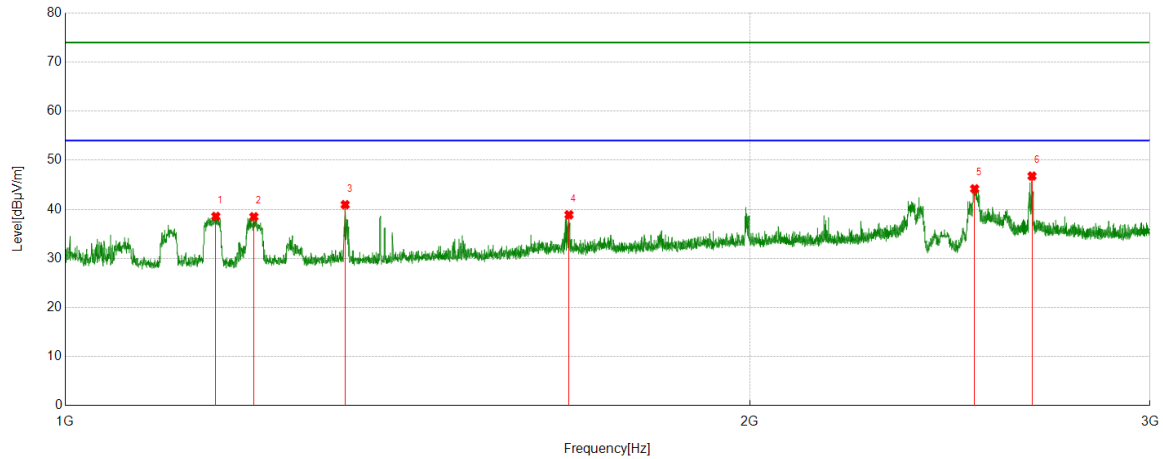
Test Mode	Channel	Polarization	Verdict
11N HT20	MCH	Horizontal	PASS



No.	Frequency	Reading Level	Correct Factor	Result	Limit	Margin	Remark
	[MHz]	[dBuV]	[dB/m]	[dBuV/m]	[dBuV/m]	[dB]	
1	1157.0196	60.84	-21.39	39.45	74.00	-34.55	Horizontal
2	1212.5266	60.01	-21.58	38.43	74.00	-35.57	Horizontal
3	1460.3075	56.97	-19.65	37.32	74.00	-36.68	Horizontal
4	1662.8329	55.44	-18.27	37.17	74.00	-36.83	Horizontal
5	2352.9191	60.05	-14.77	45.28	74.00	-28.72	Horizontal
6	2511.939	57.73	-13.57	44.16	74.00	-29.84	Horizontal

- Note: 1. Measurement = Reading Level + Correct Factor,
Correct Factor = Antenna Factor + Loss (Cable + Filter) – Amplifier Gain.
2. If Peak Result complies with AV limit, AV Result is deemed to comply with AV limit.
3. Test setup: RBW: 1 MHz, VBW: 3 MHz, Sweep time: auto.
4. Peak: Peak detector.
5. For below 3GHz part, filter losses were only considered in the spurious frequency bands and the authorized band was not corrected for Band Reject Filter losses.
6. Only the worst case emission was recorded, if it complies with the limit, the other emissions deemed to comply with the limit.

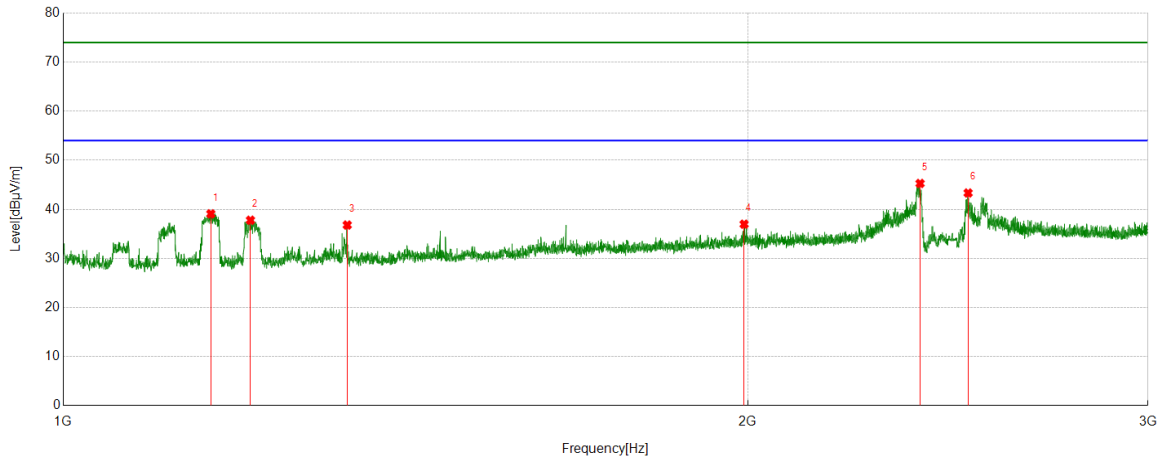
Test Mode	Channel	Polarization	Verdict
11N HT20	MCH	Vertical	PASS



No.	Frequency	Reading Level	Correct Factor	Result	Limit	Margin	Remark
	[MHz]	[dBuV]	[dB/m]	[dBuV/m]	[dBuV/m]	[dB]	
1	1164.7706	60.01	-21.45	38.56	74.00	-35.44	Vertical
2	1210.5263	60.14	-21.65	38.49	74.00	-35.51	Vertical
3	1327.791	61.55	-20.60	40.95	74.00	-33.05	Vertical
4	1665.5832	57.10	-18.21	38.89	74.00	-35.11	Vertical
5	2511.939	57.75	-13.57	44.18	74.00	-29.82	Vertical
6	2662.2078	60.01	-13.23	46.78	74.00	-27.22	Vertical

- Note: 1. Measurement = Reading Level + Correct Factor,
Correct Factor = Antenna Factor + Loss (Cable + Filter) – Amplifier Gain.
2. If Peak Result complies with AV limit, AV Result is deemed to comply with AV limit.
3. Test setup: RBW: 1 MHz, VBW: 3 MHz, Sweep time: auto.
4. Peak: Peak detector.
5. For below 3GHz part, filter losses were only considered in the spurious frequency bands and the authorized band was not corrected for Band Reject Filter losses.
6. Only the worst case emission was recorded, if it complies with the limit, the other emissions deemed to comply with the limit.

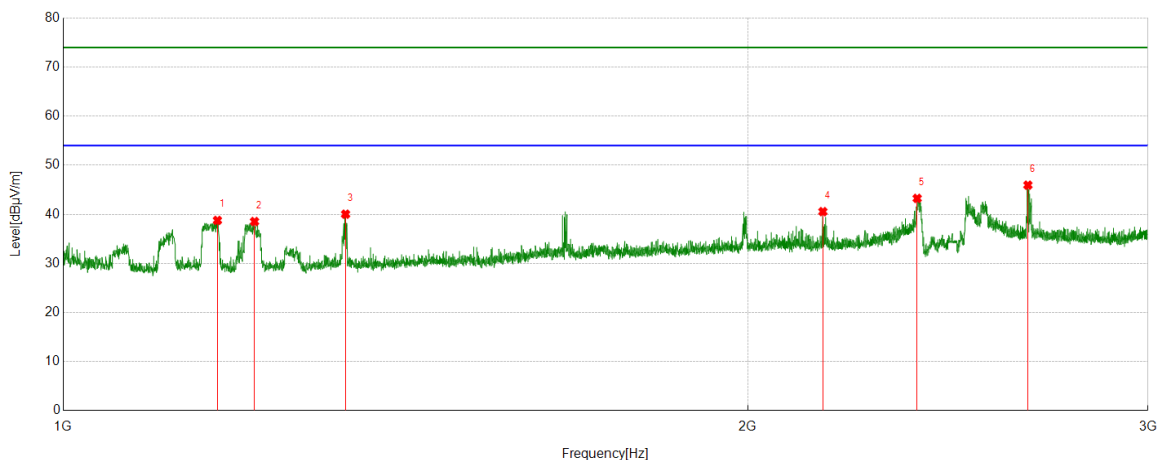
Test Mode	Channel	Polarization	Verdict
11N HT20	HCH	Horizontal	PASS



No.	Frequency	Reading Level	Correct Factor	Result	Limit	Margin	Remark
	[MHz]	[dBuV]	[dB/m]	[dBuV/m]	[dBuV/m]	[dB]	
1	1161.2702	60.50	-21.42	39.08	74.00	-34.92	Horizontal
2	1208.7761	59.49	-21.71	37.78	74.00	-36.22	Horizontal
3	1333.2917	57.39	-20.59	36.80	74.00	-37.20	Horizontal
4	1992.8741	53.30	-16.33	36.97	74.00	-37.03	Horizontal
5	2381.6727	59.49	-14.22	45.27	74.00	-28.73	Horizontal
6	2500.4376	56.76	-13.43	43.33	74.00	-30.67	Horizontal

- Note: 1. Measurement = Reading Level + Correct Factor,
Correct Factor = Antenna Factor + Loss (Cable + Filter) – Amplifier Gain.
2. If Peak Result complies with AV limit, AV Result is deemed to comply with AV limit.
3. Test setup: RBW: 1 MHz, VBW: 3 MHz, Sweep time: auto.
4. Peak: Peak detector.
5. For below 3GHz part, filter losses were only considered in the spurious frequency bands and the authorized band was not corrected for Band Reject Filter losses.
6. Only the worst case emission was recorded, if it complies with the limit, the other emissions deemed to comply with the limit.

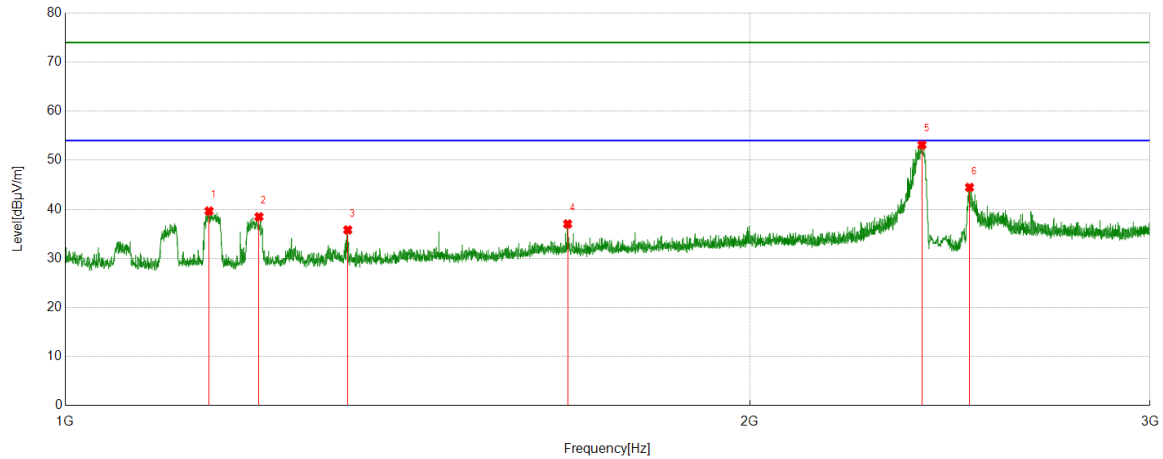
Test Mode	Channel	Polarization	Verdict
11N HT20	HCH	Vertical	PASS



No.	Frequency	Reading Level	Correct Factor	Result	Limit	Margin	Remark
	[MHz]	[dBuV]	[dB/m]	[dBuV/m]	[dBuV/m]	[dB]	
1	1169.0211	60.26	-21.49	38.77	74.00	-35.23	Vertical
2	1213.7767	60.08	-21.55	38.53	74.00	-35.47	Vertical
3	1331.0414	60.62	-20.59	40.03	74.00	-33.97	Vertical
4	2158.3948	56.49	-15.94	40.55	74.00	-33.45	Vertical
5	2374.6718	57.58	-14.33	43.25	74.00	-30.75	Vertical
6	2656.4571	59.17	-13.22	45.95	74.00	-28.05	Vertical

- Note: 1. Measurement = Reading Level + Correct Factor,
Correct Factor = Antenna Factor + Loss (Cable + Filter) – Amplifier Gain.
2. If Peak Result complies with AV limit, AV Result is deemed to comply with AV limit.
3. Test setup: RBW: 1 MHz, VBW: 3 MHz, Sweep time: auto.
4. Peak: Peak detector.
5. For below 3GHz part, filter losses were only considered in the spurious frequency bands and the authorized band was not corrected for Band Reject Filter losses.
6. Only the worst case emission was recorded, if it complies with the limit, the other emissions deemed to comply with the limit.

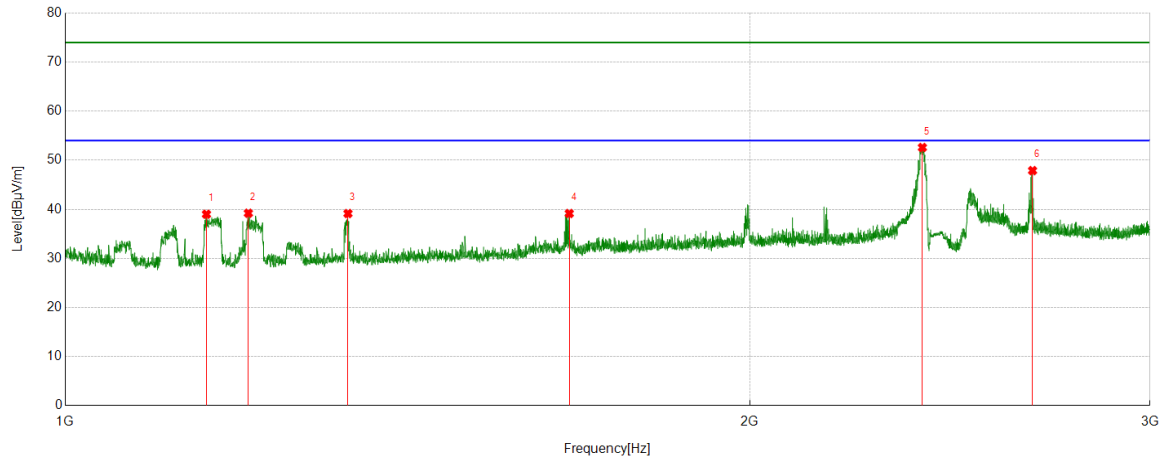
Test Mode	Channel	Polarization	Verdict
11N HT40	LCH	Horizontal	PASS



No.	Frequency	Reading Level	Correct Factor	Result	Limit	Margin	Remark
	[MHz]	[dBuV]	[dB/m]	[dBuV/m]	[dBuV/m]	[dB]	
1	1156.7696	61.03	-21.38	39.65	74.00	-34.35	Horizontal
2	1216.7771	59.93	-21.45	38.48	74.00	-35.52	Horizontal
3	1331.2914	56.39	-20.59	35.80	74.00	-38.20	Horizontal
4	1663.3329	55.28	-18.26	37.02	74.00	-36.98	Horizontal
5	2381.4227	67.35	-14.22	53.13	74.00	-20.87	Horizontal
6	2498.9374	57.90	-13.43	44.47	74.00	-29.53	Horizontal

- Note: 1. Measurement = Reading Level + Correct Factor,
 Correct Factor = Antenna Factor + Loss (Cable + Filter) – Amplifier Gain.
2. If Peak Result complies with AV limit, AV Result is deemed to comply with AV limit.
3. Test setup: RBW: 1 MHz, VBW: 3 MHz, Sweep time: auto.
4. Peak: Peak detector.
5. For below 3GHz part, filter losses were only considered in the spurious frequency bands and the authorized band was not corrected for Band Reject Filter losses.
6. Only the worst case emission was recorded, if it complies with the limit, the other emissions deemed to comply with the limit.

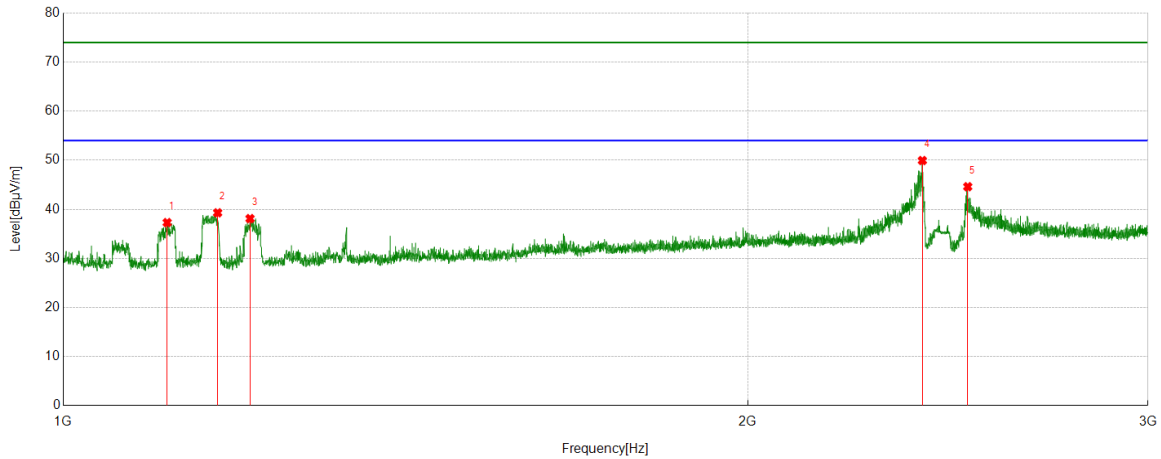
Test Mode	Channel	Polarization	Verdict
11N HT40	LCH	Vertical	PASS



No.	Frequency	Reading Level	Correct Factor	Result	Limit	Margin	Remark
	[MHz]	[dBuV]	[dB/m]	[dBuV/m]	[dBuV/m]	[dB]	
1	1153.7692	60.35	-21.35	39.00	74.00	-35.00	Vertical
2	1203.7755	61.08	-21.87	39.21	74.00	-34.79	Vertical
3	1331.5414	59.73	-20.59	39.14	74.00	-34.86	Vertical
4	1666.0833	57.35	-18.20	39.15	74.00	-34.85	Vertical
5	2382.4228	66.82	-14.22	52.60	74.00	-21.40	Vertical
6	2663.708	61.13	-13.24	47.89	74.00	-26.11	Vertical

- Note: 1. Measurement = Reading Level + Correct Factor,
Correct Factor = Antenna Factor + Loss (Cable + Filter) – Amplifier Gain.
2. If Peak Result complies with AV limit, AV Result is deemed to comply with AV limit.
3. Test setup: RBW: 1 MHz, VBW: 3 MHz, Sweep time: auto.
4. Peak: Peak detector.
5. For below 3GHz part, filter losses were only considered in the spurious frequency bands and the authorized band was not corrected for Band Reject Filter losses.
6. Only the worst case emission was recorded, if it complies with the limit, the other emissions deemed to comply with the limit.

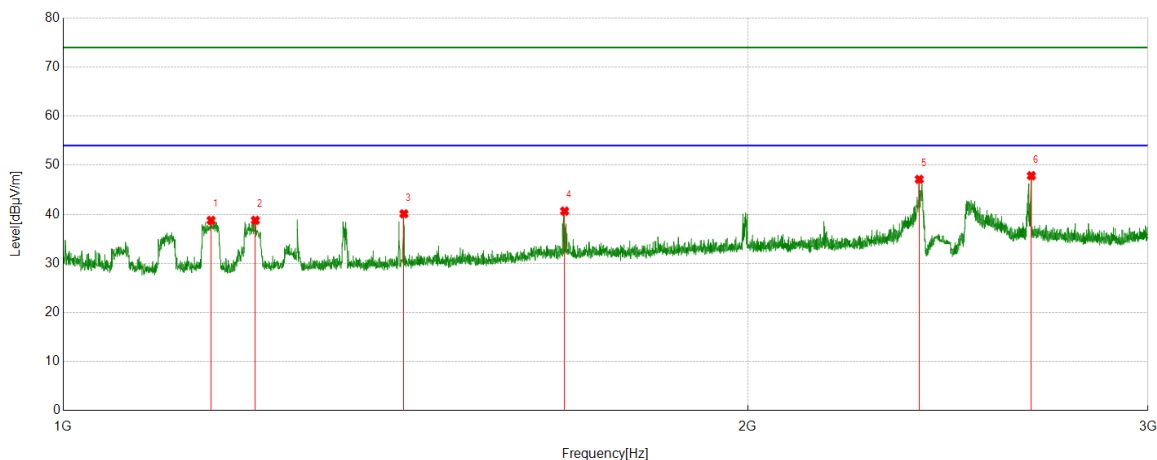
Test Mode	Channel	Polarization	Verdict
11N HT40	MCH	Horizontal	PASS



No.	Frequency	Reading Level	Correct Factor	Result	Limit	Margin	Remark
	[MHz]	[dBuV]	[dB/m]	[dBuV/m]	[dBuV/m]	[dB]	
1	1111.0139	58.92	-21.62	37.30	74.00	-36.70	Horizontal
2	1169.2712	60.78	-21.49	39.29	74.00	-34.71	Horizontal
3	1208.276	59.83	-21.72	38.11	74.00	-35.89	Horizontal
4	2387.1734	64.17	-14.23	49.94	74.00	-24.06	Horizontal
5	2499.4374	58.03	-13.42	44.61	74.00	-29.39	Horizontal

- Note: 1. Measurement = Reading Level + Correct Factor,
Correct Factor = Antenna Factor + Loss (Cable + Filter) – Amplifier Gain.
2. If Peak Result complies with AV limit, AV Result is deemed to comply with AV limit.
3. Test setup: RBW: 1 MHz, VBW: 3 MHz, Sweep time: auto.
4. Peak: Peak detector.
5. For below 3GHz part, filter losses were only considered in the spurious frequency bands and the authorized band was not corrected for Band Reject Filter losses.
6. Only the worst case emission was recorded, if it complies with the limit, the other emissions deemed to comply with the limit.

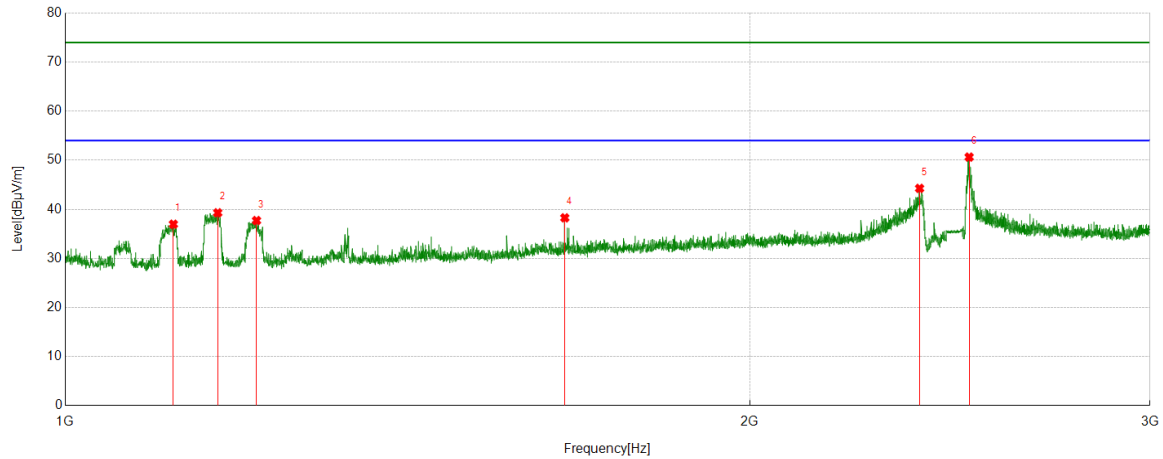
Test Mode	Channel	Polarization	Verdict
11N HT40	MCH	Vertical	PASS



No.	Frequency	Reading Level	Correct Factor	Result	Limit	Margin	Remark
	[MHz]	[dBuV]	[dB/m]	[dBuV/m]	[dBuV/m]	[dB]	
1	1161.5202	60.19	-21.42	38.77	74.00	-35.23	Vertical
2	1214.7768	60.29	-21.51	38.78	74.00	-35.22	Vertical
3	1412.0515	60.30	-20.19	40.11	74.00	-33.89	Vertical
4	1661.5827	58.96	-18.30	40.66	74.00	-33.34	Vertical
5	2379.6725	61.36	-14.23	47.13	74.00	-26.87	Vertical
6	2665.7082	61.11	-13.24	47.87	74.00	-26.13	Vertical

- Note: 1. Measurement = Reading Level + Correct Factor,
Correct Factor = Antenna Factor + Loss (Cable + Filter) – Amplifier Gain.
2. If Peak Result complies with AV limit, AV Result is deemed to comply with AV limit.
3. Test setup: RBW: 1 MHz, VBW: 3 MHz, Sweep time: auto.
4. Peak: Peak detector.
5. For below 3GHz part, filter losses were only considered in the spurious frequency bands and the authorized band was not corrected for Band Reject Filter losses.
6. Only the worst case emission was recorded, if it complies with the limit, the other emissions deemed to comply with the limit.

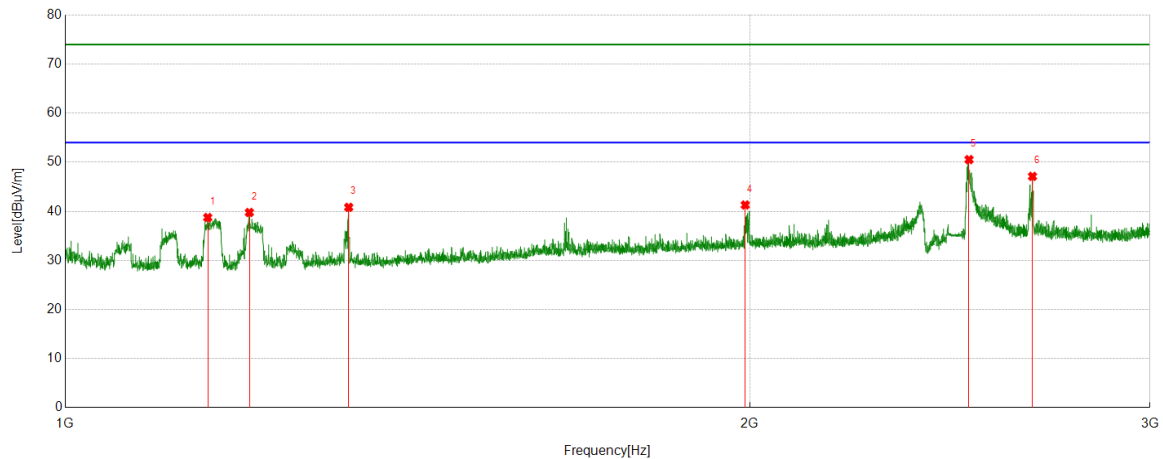
Test Mode	Channel	Polarization	Verdict
11N HT40	HCH	Horizontal	PASS



No.	Frequency	Reading Level	Correct Factor	Result	Limit	Margin	Remark
	[MHz]	[dBuV]	[dB/m]	[dBuV/m]	[dBuV/m]	[dB]	
1	1115.7645	58.45	-21.48	36.97	74.00	-37.03	Horizontal
2	1167.0209	60.77	-21.48	39.29	74.00	-34.71	Horizontal
3	1213.7767	59.26	-21.55	37.71	74.00	-36.29	Horizontal
4	1658.5823	56.60	-18.33	38.27	74.00	-35.73	Horizontal
5	2375.672	58.58	-14.31	44.27	74.00	-29.73	Horizontal
6	2497.9372	64.07	-13.43	50.64	74.00	-23.36	Horizontal

- Note: 1. Measurement = Reading Level + Correct Factor,
Correct Factor = Antenna Factor + Loss (Cable + Filter) – Amplifier Gain.
2. If Peak Result complies with AV limit, AV Result is deemed to comply with AV limit.
3. Test setup: RBW: 1 MHz, VBW: 3 MHz, Sweep time: auto.
4. Peak: Peak detector.
5. For below 3GHz part, filter losses were only considered in the spurious frequency bands and the authorized band was not corrected for Band Reject Filter losses.
6. Only the worst case emission was recorded, if it complies with the limit, the other emissions deemed to comply with the limit.

Test Mode	Channel	Polarization	Verdict
11N HT40	HCH	Vertical	PASS



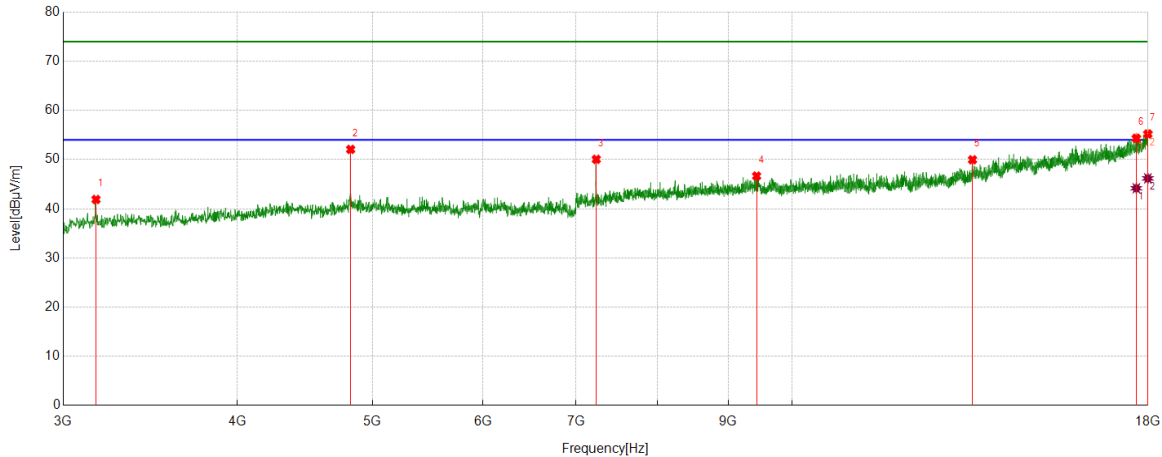
No.	Frequency	Reading Level	Correct Factor	Result	Limit	Margin	Remark
	[MHz]	[dBuV]	[dB/m]	[dBuV/m]	[dBuV/m]	[dB]	
1	1155.2694	60.11	-21.37	38.74	74.00	-35.26	Vertical
2	1205.0256	61.60	-21.83	39.77	74.00	-34.23	Vertical
3	1332.5416	61.41	-20.59	40.82	74.00	-33.18	Vertical
4	1991.1239	57.64	-16.34	41.30	74.00	-32.70	Vertical
5	2497.6872	63.97	-13.43	50.54	74.00	-23.46	Vertical
6	2663.4579	60.36	-13.24	47.12	74.00	-26.88	Vertical

- Note: 1. Measurement = Reading Level + Correct Factor,
Correct Factor = Antenna Factor + Loss (Cable + Filter) – Amplifier Gain.
2. If Peak Result complies with AV limit, AV Result is deemed to comply with AV limit.
3. Test setup: RBW: 1 MHz, VBW: 3 MHz, Sweep time: auto.
4. Peak: Peak detector.
5. For below 3GHz part, filter losses were only considered in the spurious frequency bands and the authorized band was not corrected for Band Reject Filter losses.
6. Only the worst case emission was recorded, if it complies with the limit, the other emissions deemed to comply with the limit.

Part 2: 3GHz~18GHz

HARMONICS AND SPURIOUS EMISSIONS

Test Mode	Channel	Polarization	Verdict
11B	LCH	Horizontal	PASS



PK Result:

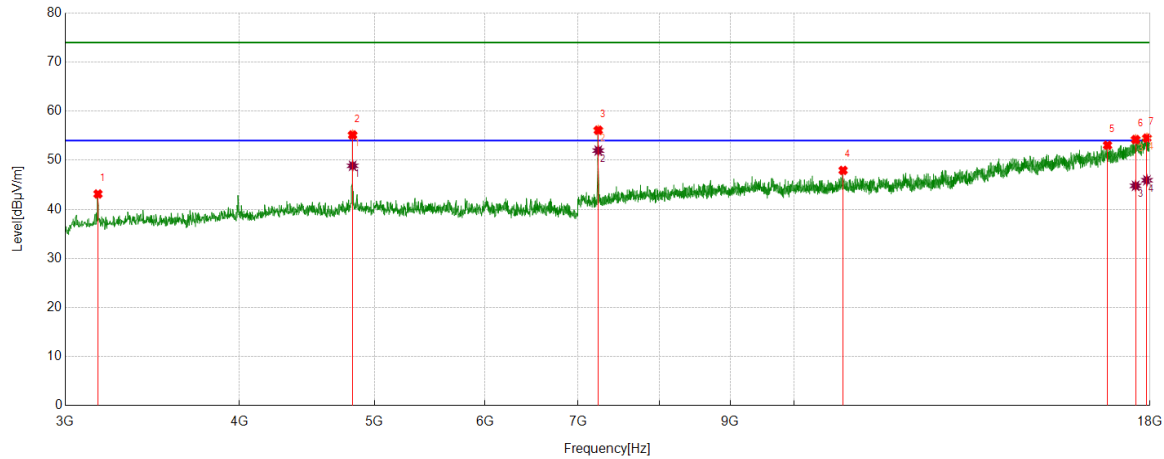
No.	Frequency	Reading Level	Correct Factor	Result	Limit	Margin	Remark
	[MHz]	[dBuV]	[dB/m]	[dBuV/m]	[dBuV/m]	[dB]	
1	3166.8959	51.49	-9.60	41.89	74.00	-32.11	Horizontal
2	4822.7278	56.16	-4.09	52.07	74.00	-21.93	Horizontal
3	7236.1545	49.97	0.08	50.05	74.00	-23.95	Horizontal
4	9430.1788	43.10	3.55	46.65	74.00	-27.35	Horizontal
5	13471.3089	41.16	8.80	49.96	74.00	-24.04	Horizontal
6	17656.8321	36.58	17.76	54.34	74.00	-19.66	Horizontal
7	17996.2495	36.52	18.69	55.21	74.00	-18.79	Horizontal

AV Result:

No.	Frequency	Reading Level	Correct Factor	Result	Limit	Margin	Remark
	[MHz]	[dBuV]	[dB/m]	[dBuV/m]	[dBuV/m]	[dB]	
1	17656.8321	26.41	17.76	44.17	54.00	-9.83	Horizontal
2	17996.2495	27.49	18.69	46.18	54.00	-7.82	Horizontal

- Note: 1. Measurement = Reading Level + Correct Factor,
Correct Factor = Antenna Factor + Loss (Cable + Filter) – Amplifier Gain.
2. If Peak Result complies with AV limit, AV Result is deemed to comply with AV limit.
3. Peak detector: RBW: 1 MHz, VBW: 3 MHz.
4. Average detector: RBW: 1 MHz, VBW: 1/T MHz(refer to clause 7.1.).
5. For above 3GHz part, filter losses were only considered in the spurious frequency bands and the authorized band was not corrected for HPF losses.
6. Only the worst case emission was recorded, if it complies with the limit, the other emissions deemed to comply with the limit.

Test Mode	Channel	Polarization	Verdict
11B	LCH	Vertical	PASS



PK Result:

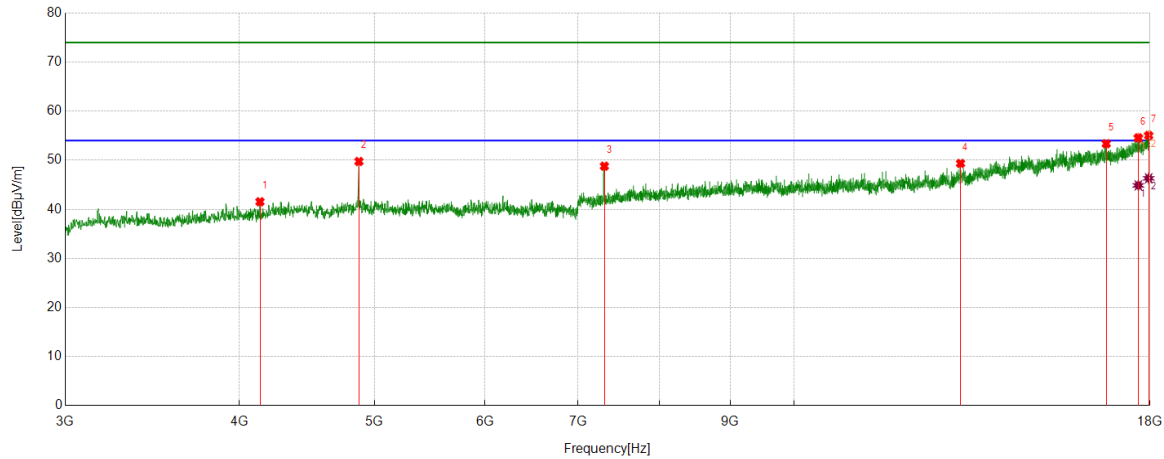
No.	Frequency	Reading Level	Correct Factor	Result	Limit	Margin	Remark
	[MHz]	[dBuV]	[dB/m]	[dBuV/m]	[dBuV/m]	[dB]	
1	3166.8959	52.73	-9.60	43.13	74.00	-30.87	Vertical
2	4822.7278	59.24	-4.09	55.15	74.00	-18.85	Vertical
3	7236.1545	56.03	0.08	56.11	74.00	-17.89	Vertical
4	10842.2303	43.41	4.52	47.93	74.00	-26.07	Vertical
5	16781.0976	37.78	15.27	53.05	74.00	-20.95	Vertical
6	17578.0723	36.89	17.32	54.21	74.00	-19.79	Vertical
7	17909.9887	35.47	19.04	54.51	74.00	-19.49	Vertical

AV Result:

No.	Frequency	Reading Level	Correct Factor	Result	Limit	Margin	Remark
	[MHz]	[dBuV]	[dB/m]	[dBuV/m]	[dBuV/m]	[dB]	
1	4822.7278	52.96	-4.09	48.87	54.00	-5.13	Vertical
2	7236.1545	51.89	0.08	51.97	54.00	-2.03	Vertical
3	17578.0723	27.47	17.32	44.79	54.00	-9.21	Vertical
4	17909.9887	26.88	19.04	45.92	54.00	-8.08	Vertical

- Note: 1. Measurement = Reading Level + Correct Factor,
Correct Factor = Antenna Factor + Loss (Cable + Filter) – Amplifier Gain.
- If Peak Result complies with AV limit, AV Result is deemed to comply with AV limit.
 - Peak detector: RBW: 1 MHz, VBW: 3 MHz.
 - Average detector: RBW: 1 MHz, VBW: 1/T MHz(refer to clause 7.1.).
 - For above 3GHz part, filter losses were only considered in the spurious frequency bands and the authorized band was not corrected for HPF losses.
 - Only the worst case emission was recorded, if it complies with the limit, the other emissions deemed to comply with the limit.

Test Mode	Channel	Polarization	Verdict
11B	MCH	Horizontal	PASS



PK Result:

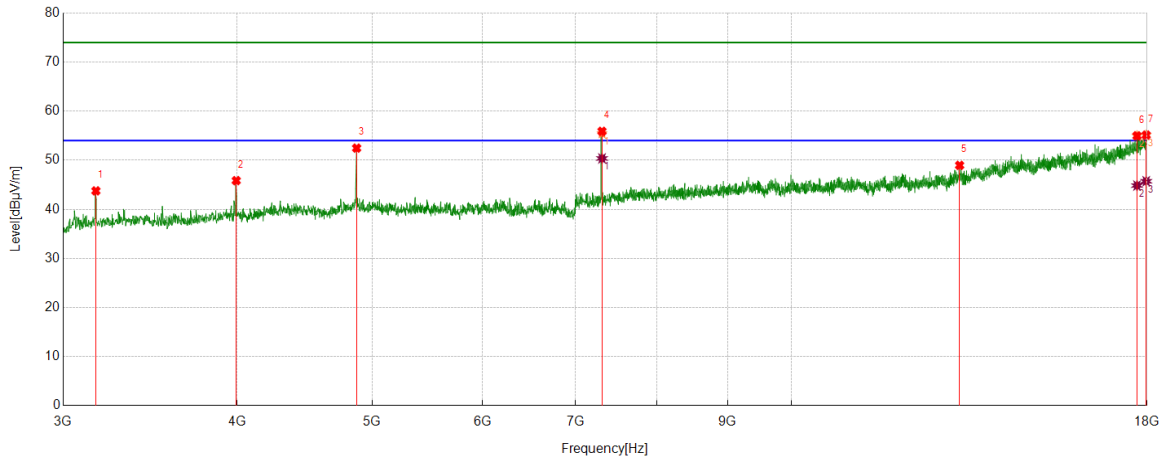
No.	Frequency	Reading Level	Correct Factor	Result	Limit	Margin	Remark
	[MHz]	[dBuV]	[dB/m]	[dBuV/m]	[dBuV/m]	[dB]	
1	4138.2673	48.16	-6.62	41.54	74.00	-32.46	Horizontal
2	4873.3592	53.37	-3.62	49.75	74.00	-24.25	Horizontal
3	7309.2887	48.82	-0.03	48.79	74.00	-25.21	Horizontal
4	13163.7705	41.26	8.09	49.35	74.00	-24.65	Horizontal
5	16745.4682	38.44	14.93	53.37	74.00	-20.63	Horizontal
6	17656.8321	36.80	17.76	54.56	74.00	-19.44	Horizontal
7	17960.6201	36.58	18.47	55.05	74.00	-18.95	Horizontal

AV Result:

No.	Frequency	Reading Level	Correct Factor	Result	Limit	Margin	Remark
	[MHz]	[dBuV]	[dB/m]	[dBuV/m]	[dBuV/m]	[dB]	
1	17656.8321	27.12	17.76	44.88	54.00	-9.12	Horizontal
2	17960.6201	27.85	18.47	46.32	54.00	-7.68	Horizontal

- Note: 1. Measurement = Reading Level + Correct Factor,
Correct Factor = Antenna Factor + Loss (Cable + Filter) – Amplifier Gain.
- If Peak Result complies with AV limit, AV Result is deemed to comply with AV limit.
 - Peak detector: RBW: 1 MHz, VBW: 3 MHz.
 - Average detector: RBW: 1 MHz, VBW: 1/T MHz(refer to clause 7.1.).
 - For above 3GHz part, filter losses were only considered in the spurious frequency bands and the authorized band was not corrected for HPF losses.
 - Only the worst case emission was recorded, if it complies with the limit, the other emissions deemed to comply with the limit.

Test Mode	Channel	Polarization	Verdict
11B	MCH	Vertical	PASS



PK Result:

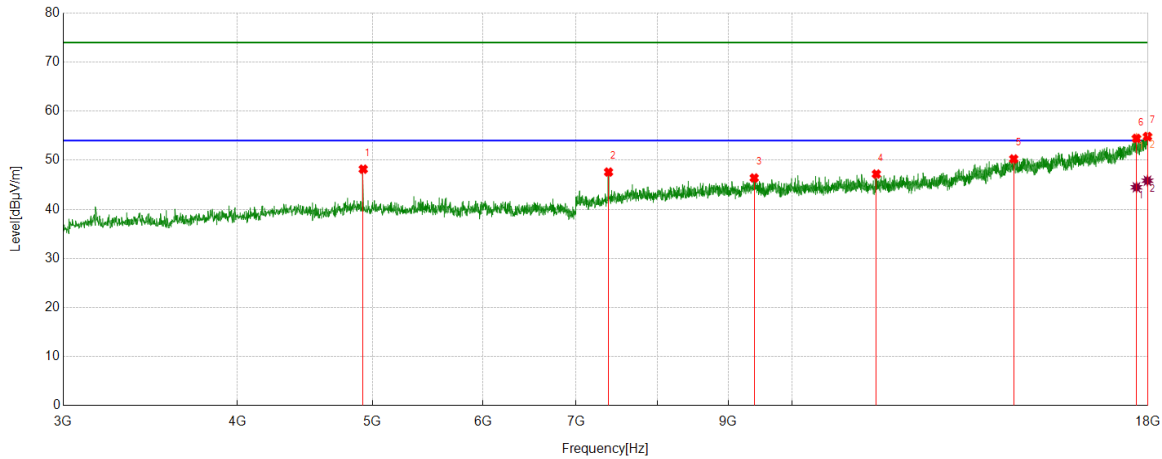
No.	Frequency	Reading Level	Correct Factor	Result	Limit	Margin	Remark
	[MHz]	[dBuV]	[dB/m]	[dBuV/m]	[dBuV/m]	[dB]	
1	3166.8959	53.36	-9.60	43.76	74.00	-30.24	Vertical
2	3993.8742	52.88	-7.03	45.85	74.00	-28.15	Vertical
3	4873.3592	56.09	-3.62	52.47	74.00	-21.53	Vertical
4	7311.1639	55.91	-0.02	55.89	74.00	-18.11	Vertical
5	13205.0256	40.89	8.07	48.96	74.00	-25.04	Vertical
6	17703.713	37.25	17.73	54.98	74.00	-19.02	Vertical
7	17975.622	36.45	18.68	55.13	74.00	-18.87	Vertical

AV Result:

No.	Frequency	Reading Level	Correct Factor	Result	Limit	Margin	Remark
	[MHz]	[dBuV]	[dB/m]	[dBuV/m]	[dBuV/m]	[dB]	
1	7311.1639	50.39	-0.02	50.37	54.00	-3.63	Vertical
2	17703.713	27.11	17.73	44.84	54.00	-9.16	Vertical
3	17975.622	27.04	18.68	45.72	54.00	-8.28	Vertical

- Note: 1. Measurement = Reading Level + Correct Factor,
Correct Factor = Antenna Factor + Loss (Cable + Filter) – Amplifier Gain.
- If Peak Result complies with AV limit, AV Result is deemed to comply with AV limit.
 - Peak detector: RBW: 1 MHz, VBW: 3 MHz.
 - Average detector: RBW: 1 MHz, VBW: 1/T MHz(refer to clause 7.1.).
 - For above 3GHz part, filter losses were only considered in the spurious frequency bands and the authorized band was not corrected for HPF losses.
 - Only the worst case emission was recorded, if it complies with the limit, the other emissions deemed to comply with the limit.

Test Mode	Channel	Polarization	Verdict
11B	HCH	Horizontal	PASS



PK Result:

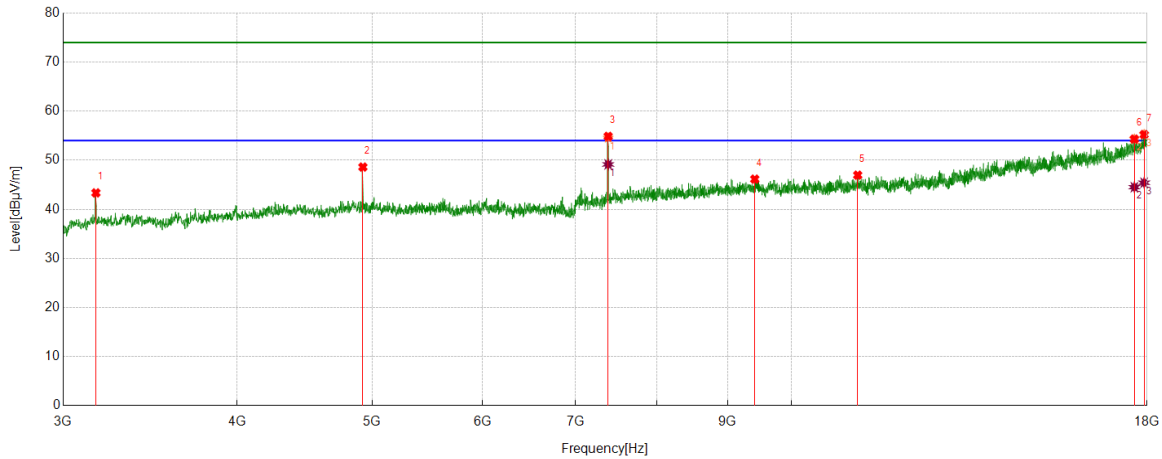
No.	Frequency	Reading Level	Correct Factor	Result	Limit	Margin	Remark
	[MHz]	[dBuV]	[dB/m]	[dBuV/m]	[dBuV/m]	[dB]	
1	4923.9905	52.06	-3.88	48.18	74.00	-25.82	Horizontal
2	7384.298	47.59	0.00	47.59	74.00	-26.41	Horizontal
3	9392.6741	43.14	3.25	46.39	74.00	-27.61	Horizontal
4	11492.9366	41.25	5.94	47.19	74.00	-26.81	Horizontal
5	14420.1775	38.72	11.54	50.26	74.00	-23.74	Horizontal
6	17660.5826	36.70	17.75	54.45	74.00	-19.55	Horizontal
7	17984.9981	36.21	18.62	54.83	74.00	-19.17	Horizontal

AV Result:

No.	Frequency	Reading Level	Correct Factor	Result	Limit	Margin	Remark
	[MHz]	[dBuV]	[dB/m]	[dBuV/m]	[dBuV/m]	[dB]	
1	17660.5826	26.74	17.75	44.49	54.00	-9.51	Horizontal
2	17984.9981	27.21	18.62	45.83	54.00	-8.17	Horizontal

- Note: 1. Measurement = Reading Level + Correct Factor,
Correct Factor = Antenna Factor + Loss (Cable + Filter) – Amplifier Gain.
- If Peak Result complies with AV limit, AV Result is deemed to comply with AV limit.
 - Peak detector: RBW: 1 MHz, VBW: 3 MHz.
 - Average detector: RBW: 1 MHz, VBW: 1/T MHz(refer to clause 7.1.).
 - For above 3GHz part, filter losses were only considered in the spurious frequency bands and the authorized band was not corrected for HPF losses.
 - Only the worst case emission was recorded, if it complies with the limit, the other emissions deemed to comply with the limit.

Test Mode	Channel	Polarization	Verdict
11B	HCH	Vertical	PASS



PK Result:

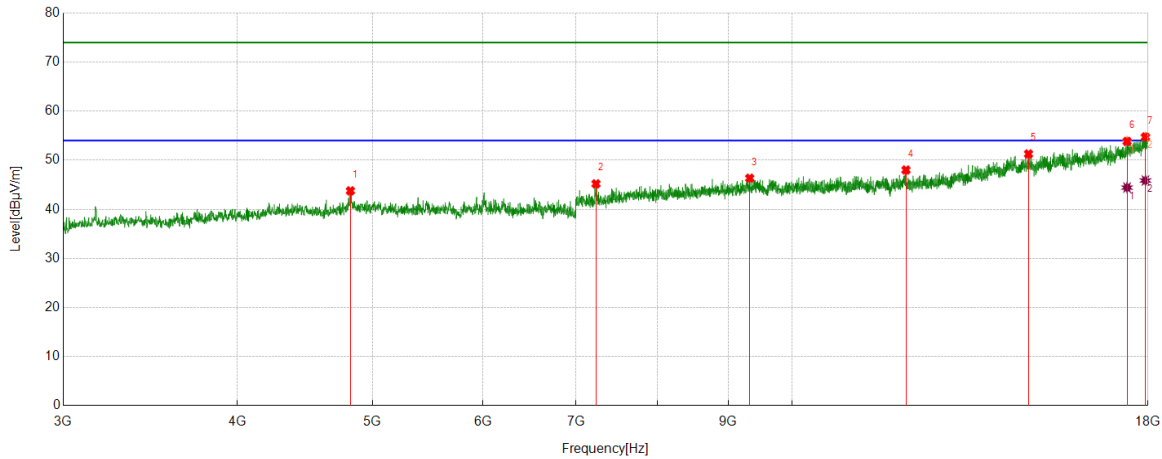
No.	Frequency	Reading Level	Correct Factor	Result	Limit	Margin	Remark
	[MHz]	[dBuV]	[dB/m]	[dBuV/m]	[dBuV/m]	[dB]	
1	3166.8959	52.95	-9.60	43.35	74.00	-30.65	Vertical
2	4923.9905	52.49	-3.88	48.61	74.00	-25.39	Vertical
3	7386.1733	54.88	-0.02	54.86	74.00	-19.14	Vertical
4	9411.4264	42.92	3.23	46.15	74.00	-27.85	Vertical
5	11157.2697	41.90	5.06	46.96	74.00	-27.04	Vertical
6	17626.8284	36.94	17.37	54.31	74.00	-19.69	Vertical
7	17913.7392	36.32	18.92	55.24	74.00	-18.76	Vertical

AV Result:

No.	Frequency	Reading Level	Correct Factor	Result	Limit	Margin	Remark
	[MHz]	[dBuV]	[dB/m]	[dBuV/m]	[dBuV/m]	[dB]	
1	7386.1733	49.17	-0.02	49.15	54.00	-4.85	Vertical
2	17626.8284	27.14	17.37	44.51	54.00	-9.49	Vertical
3	17913.7392	26.49	18.92	45.41	54.00	-8.59	Vertical

- Note: 1. Measurement = Reading Level + Correct Factor,
Correct Factor = Antenna Factor + Loss (Cable + Filter) – Amplifier Gain.
- If Peak Result complies with AV limit, AV Result is deemed to comply with AV limit.
 - Peak detector: RBW: 1 MHz, VBW: 3 MHz.
 - Average detector: RBW: 1 MHz, VBW: 1/T MHz(refer to clause 7.1.).
 - For above 3GHz part, filter losses were only considered in the spurious frequency bands and the authorized band was not corrected for HPF losses.
 - Only the worst case emission was recorded, if it complies with the limit, the other emissions deemed to comply with the limit.

Test Mode	Channel	Polarization	Verdict
11G	LCH	Horizontal	PASS



PK Result:

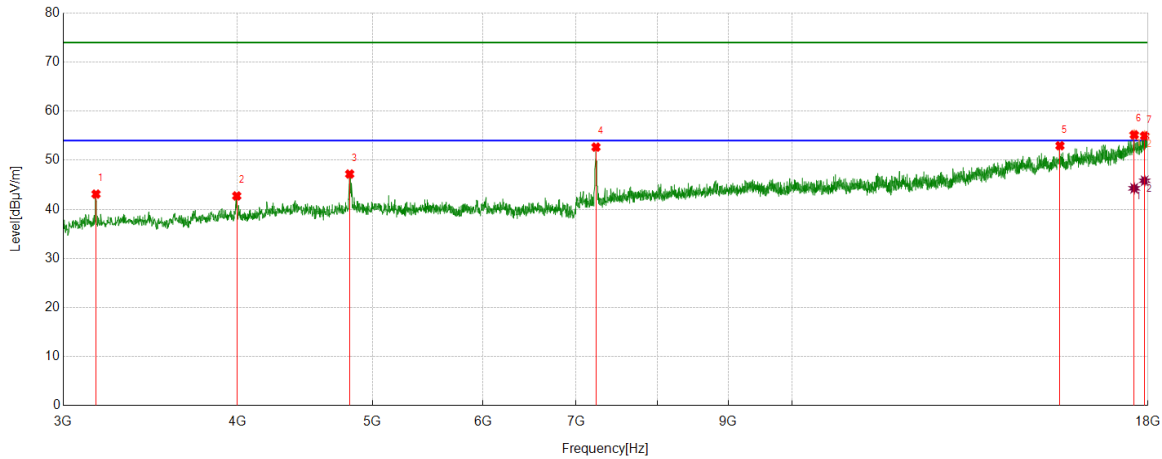
No.	Frequency	Reading Level	Correct Factor	Result	Limit	Margin	Remark
	[MHz]	[dBuV]	[dB/m]	[dBuV/m]	[dBuV/m]	[dB]	
1	4820.8526	47.96	-4.19	43.77	74.00	-30.23	Horizontal
2	7232.4041	45.18	0.02	45.20	74.00	-28.80	Horizontal
3	9323.2904	43.05	3.29	46.34	74.00	-27.66	Horizontal
4	12068.6336	41.36	6.65	48.01	74.00	-25.99	Horizontal
5	14776.4721	39.46	11.83	51.29	74.00	-22.71	Horizontal
6	17388.6736	37.45	16.39	53.84	74.00	-20.16	Horizontal
7	17924.9906	36.04	18.71	54.75	74.00	-19.25	Horizontal

AV Result:

No.	Frequency	Reading Level	Correct Factor	Result	Limit	Margin	Remark
	[MHz]	[dBuV]	[dB/m]	[dBuV/m]	[dBuV/m]	[dB]	
1	17388.6736	28.04	16.39	44.43	54.00	-9.57	Horizontal
2	17924.9906	27.16	18.71	45.87	54.00	-8.13	Horizontal

- Note: 1. Measurement = Reading Level + Correct Factor,
Correct Factor = Antenna Factor + Loss (Cable + Filter) – Amplifier Gain.
- If Peak Result complies with AV limit, AV Result is deemed to comply with AV limit.
 - Peak detector: RBW: 1 MHz, VBW: 3 MHz.
 - Average detector: RBW: 1 MHz, VBW: 1/T MHz(refer to clause 7.1.).
 - For above 3GHz part, filter losses were only considered in the spurious frequency bands and the authorized band was not corrected for HPF losses.
 - Only the worst case emission was recorded, if it complies with the limit, the other emissions deemed to comply with the limit.

Test Mode	Channel	Polarization	Verdict
11G	LCH	Vertical	PASS



PK Result:

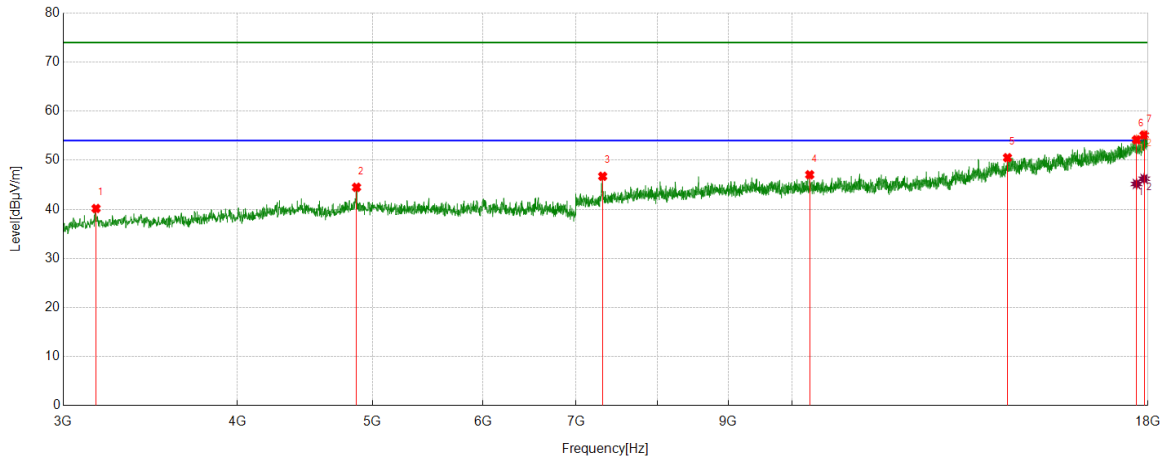
No.	Frequency	Reading Level	Correct Factor	Result	Limit	Margin	Remark
	[MHz]	[dBuV]	[dB/m]	[dBuV/m]	[dBuV/m]	[dB]	
1	3166.8959	52.70	-9.60	43.10	74.00	-30.90	Vertical
2	3995.7495	49.71	-6.98	42.73	74.00	-31.27	Vertical
3	4815.2269	51.34	-4.15	47.19	74.00	-26.81	Vertical
4	7232.4041	52.65	0.02	52.67	74.00	-21.33	Vertical
5	15564.0705	40.42	12.53	52.95	74.00	-21.05	Vertical
6	17594.9494	37.57	17.61	55.18	74.00	-18.82	Vertical
7	17902.4878	35.74	19.23	54.97	74.00	-19.03	Vertical

AV Result:

No.	Frequency	Reading Level	Correct Factor	Result	Limit	Margin	Remark
	[MHz]	[dBuV]	[dB/m]	[dBuV/m]	[dBuV/m]	[dB]	
1	17594.9494	26.67	17.61	44.28	54.00	-9.72	Vertical
2	17902.4878	26.59	19.23	45.82	54.00	-8.18	Vertical

- Note: 1. Measurement = Reading Level + Correct Factor,
Correct Factor = Antenna Factor + Loss (Cable + Filter) – Amplifier Gain.
- If Peak Result complies with AV limit, AV Result is deemed to comply with AV limit.
 - Peak detector: RBW: 1 MHz, VBW: 3 MHz.
 - Average detector: RBW: 1 MHz, VBW: 1/T MHz(refer to clause 7.1.).
 - For above 3GHz part, filter losses were only considered in the spurious frequency bands and the authorized band was not corrected for HPF losses.
 - Only the worst case emission was recorded, if it complies with the limit, the other emissions deemed to comply with the limit.

Test Mode	Channel	Polarization	Verdict
11G	MCH	Horizontal	PASS



PK Result:

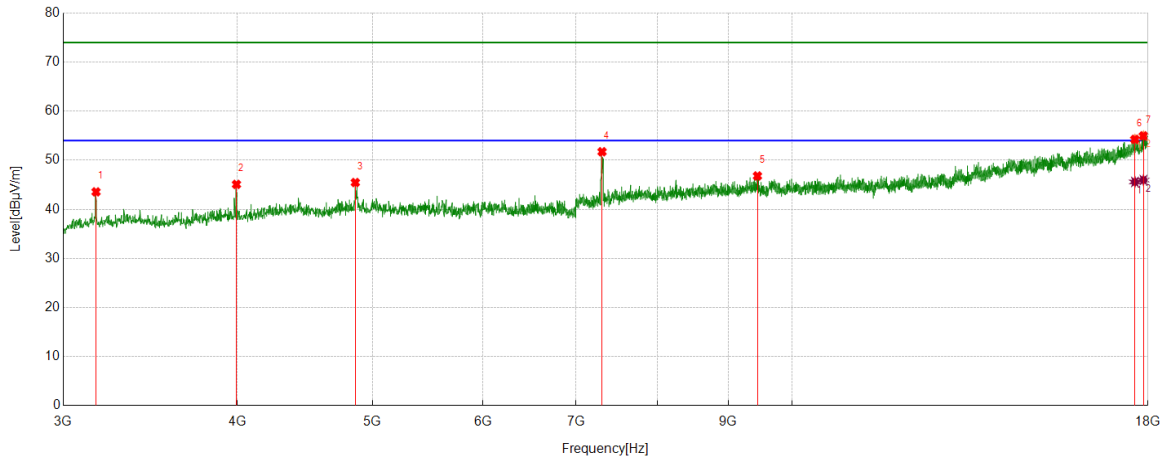
No.	Frequency	Reading Level	Correct Factor	Result	Limit	Margin	Remark
	[MHz]	[dBuV]	[dB/m]	[dBuV/m]	[dBuV/m]	[dB]	
1	3166.8959	49.77	-9.60	40.17	74.00	-33.83	Horizontal
2	4869.6087	48.18	-3.69	44.49	74.00	-29.51	Horizontal
3	7313.0391	46.75	-0.02	46.73	74.00	-27.27	Horizontal
4	10294.6618	42.84	4.20	47.04	74.00	-26.96	Horizontal
5	14272.034	38.56	11.96	50.52	74.00	-23.48	Horizontal
6	17662.4578	36.48	17.69	54.17	74.00	-19.83	Horizontal
7	17887.4859	35.94	19.19	55.13	74.00	-18.87	Horizontal

AV Result:

No.	Frequency	Reading Level	Correct Factor	Result	Limit	Margin	Remark
	[MHz]	[dBuV]	[dB/m]	[dBuV/m]	[dBuV/m]	[dB]	
1	17662.4578	27.48	17.69	45.17	54.00	-8.83	Horizontal
2	17887.4859	27.03	19.19	46.22	54.00	-7.78	Horizontal

- Note: 1. Measurement = Reading Level + Correct Factor,
Correct Factor = Antenna Factor + Loss (Cable + Filter) – Amplifier Gain.
- If Peak Result complies with AV limit, AV Result is deemed to comply with AV limit.
 - Peak detector: RBW: 1 MHz, VBW: 3 MHz.
 - Average detector: RBW: 1 MHz, VBW: 1/T MHz(refer to clause 7.1.).
 - For above 3GHz part, filter losses were only considered in the spurious frequency bands and the authorized band was not corrected for HPF losses.
 - Only the worst case emission was recorded, if it complies with the limit, the other emissions deemed to comply with the limit.

Test Mode	Channel	Polarization	Verdict
11G	MCH	Vertical	PASS



PK Result:

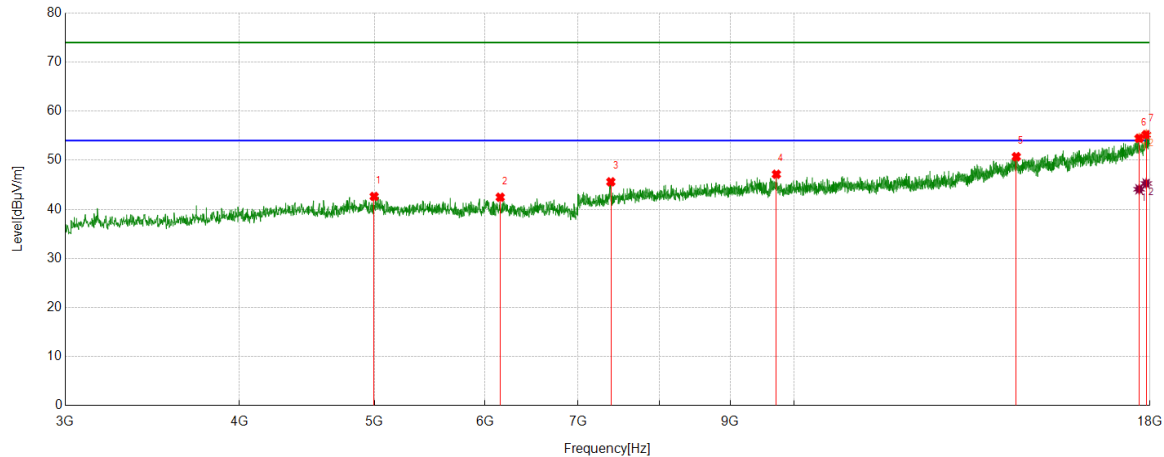
No.	Frequency	Reading Level	Correct Factor	Result	Limit	Margin	Remark
	[MHz]	[dBuV]	[dB/m]	[dBuV/m]	[dBuV/m]	[dB]	
1	3166.8959	53.16	-9.60	43.56	74.00	-30.44	Vertical
2	3993.8742	52.11	-7.03	45.08	74.00	-28.92	Vertical
3	4860.2325	49.17	-3.71	45.46	74.00	-28.54	Vertical
4	7305.5382	51.82	-0.09	51.73	74.00	-22.27	Vertical
5	9443.3054	43.15	3.65	46.80	74.00	-27.20	Vertical
6	17615.5769	36.63	17.63	54.26	74.00	-19.74	Vertical
7	17864.9831	36.16	18.81	54.97	74.00	-19.03	Vertical

AV Result:

No.	Frequency	Reading Level	Correct Factor	Result	Limit	Margin	Remark
	[MHz]	[dBuV]	[dB/m]	[dBuV/m]	[dBuV/m]	[dB]	
1	17615.5769	27.95	17.63	45.58	54.00	-8.42	Vertical
2	17864.9831	27.15	18.81	45.96	54.00	-8.04	Vertical

- Note: 1. Measurement = Reading Level + Correct Factor,
Correct Factor = Antenna Factor + Loss (Cable + Filter) – Amplifier Gain.
- If Peak Result complies with AV limit, AV Result is deemed to comply with AV limit.
 - Peak detector: RBW: 1 MHz, VBW: 3 MHz.
 - Average detector: RBW: 1 MHz, VBW: 1/T MHz(refer to clause 7.1.).
 - For above 3GHz part, filter losses were only considered in the spurious frequency bands and the authorized band was not corrected for HPF losses.
 - Only the worst case emission was recorded, if it complies with the limit, the other emissions deemed to comply with the limit.

Test Mode	Channel	Polarization	Verdict
11G	HCH	Horizontal	PASS


PK Result:

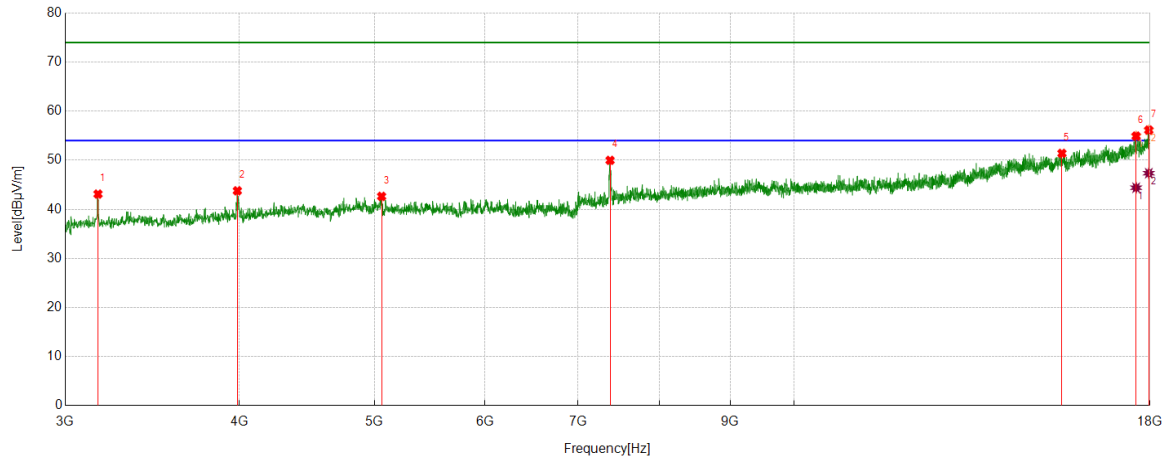
No.	Frequency	Reading Level	Correct Factor	Result	Limit	Margin	Remark
	[MHz]	[dBuV]	[dB/m]	[dBuV/m]	[dBuV/m]	[dB]	
1	4997.1246	46.28	-3.66	42.62	74.00	-31.38	Horizontal
2	6154.1443	44.48	-2.02	42.46	74.00	-31.54	Horizontal
3	7388.0485	45.64	-0.04	45.60	74.00	-28.40	Horizontal
4	9711.4639	43.50	3.64	47.14	74.00	-26.86	Horizontal
5	14433.3042	39.00	11.72	50.72	74.00	-23.28	Horizontal
6	17681.2102	37.13	17.34	54.47	74.00	-19.53	Horizontal
7	17889.3612	35.97	19.24	55.21	74.00	-18.79	Horizontal

AV Result:

No.	Frequency	Reading Level	Correct Factor	Result	Limit	Margin	Remark
	[MHz]	[dBuV]	[dB/m]	[dBuV/m]	[dBuV/m]	[dB]	
1	17681.2102	26.75	17.34	44.09	54.00	-9.91	Horizontal
2	17889.3612	26.03	19.24	45.27	54.00	-8.73	Horizontal

- Note: 1. Measurement = Reading Level + Correct Factor,
 Correct Factor = Antenna Factor + Loss (Cable + Filter) – Amplifier Gain.
- If Peak Result complies with AV limit, AV Result is deemed to comply with AV limit.
 - Peak detector: RBW: 1 MHz, VBW: 3 MHz.
 - Average detector: RBW: 1 MHz, VBW: 1/T MHz(refer to clause 7.1.).
 - For above 3GHz part, filter losses were only considered in the spurious frequency bands and the authorized band was not corrected for HPF losses.
 - Only the worst case emission was recorded, if it complies with the limit, the other emissions deemed to comply with the limit.

Test Mode	Channel	Polarization	Verdict
11G	HCH	Vertical	PASS



PK Result:

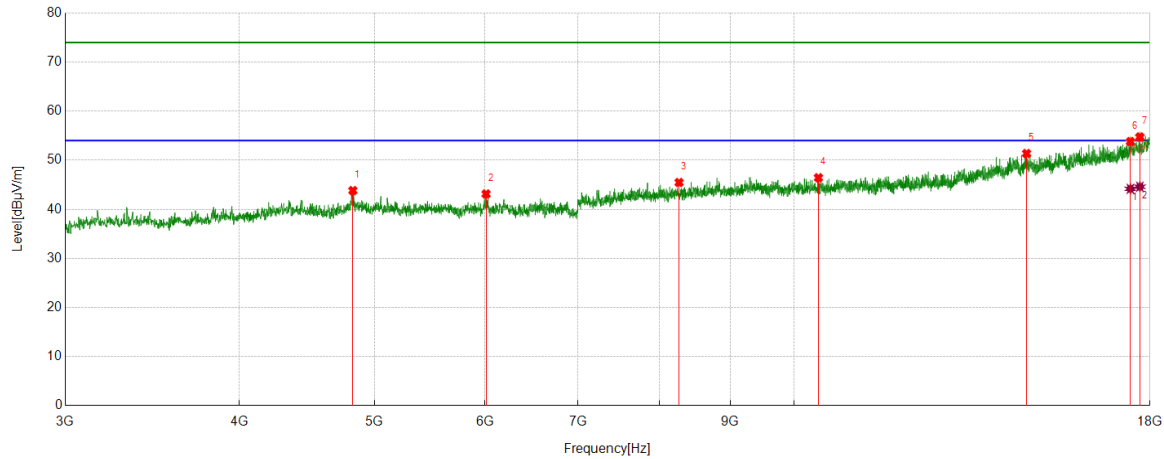
No.	Frequency	Reading Level	Correct Factor	Result	Limit	Margin	Remark
	[MHz]	[dBuV]	[dB/m]	[dBuV/m]	[dBuV/m]	[dB]	
1	3166.8959	52.71	-9.60	43.11	74.00	-30.89	Vertical
2	3986.3733	50.76	-6.98	43.78	74.00	-30.22	Vertical
3	5059.0074	45.76	-3.12	42.64	74.00	-31.36	Vertical
4	7378.6723	49.93	0.05	49.98	74.00	-24.02	Vertical
5	15564.0705	38.87	12.53	51.40	74.00	-22.60	Vertical
6	17593.0741	37.28	17.64	54.92	74.00	-19.08	Vertical
7	17964.3705	37.58	18.56	56.14	74.00	-17.86	Vertical

AV Result:

No.	Frequency	Reading Level	Correct Factor	Result	Limit	Margin	Remark
	[MHz]	[dBuV]	[dB/m]	[dBuV/m]	[dBuV/m]	[dB]	
1	17593.0741	26.76	17.64	44.40	54.00	-9.60	Vertical
2	17964.3705	28.80	18.56	47.36	54.00	-6.64	Vertical

- Note: 1. Measurement = Reading Level + Correct Factor,
Correct Factor = Antenna Factor + Loss (Cable + Filter) – Amplifier Gain.
- If Peak Result complies with AV limit, AV Result is deemed to comply with AV limit.
 - Peak detector: RBW: 1 MHz, VBW: 3 MHz.
 - Average detector: RBW: 1 MHz, VBW: 1/T MHz(refer to clause 7.1.).
 - For above 3GHz part, filter losses were only considered in the spurious frequency bands and the authorized band was not corrected for HPF losses.
 - Only the worst case emission was recorded, if it complies with the limit, the other emissions deemed to comply with the limit.

Test Mode	Channel	Polarization	Verdict
11N HT20	LCH	Horizontal	PASS



PK Result:

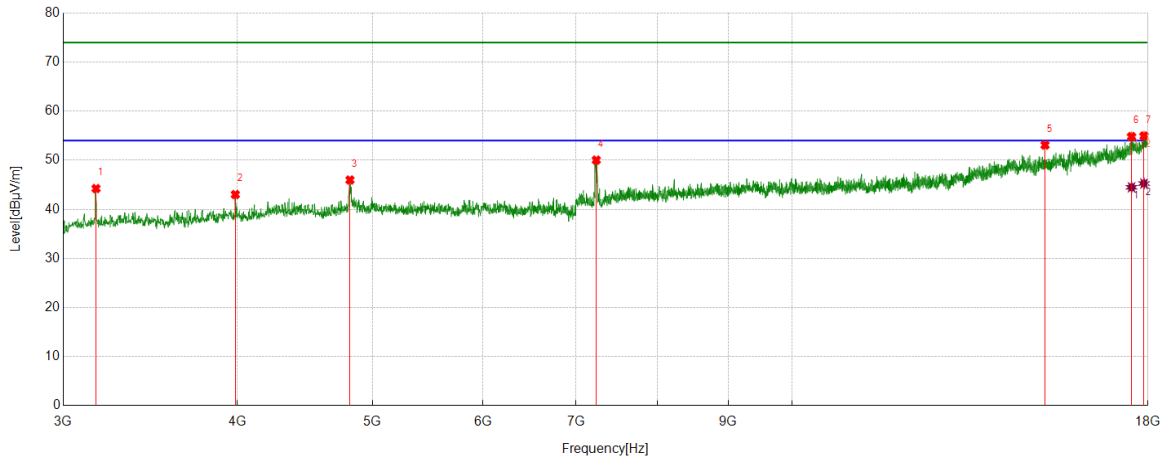
No.	Frequency	Reading Level	Correct Factor	Result	Limit	Margin	Remark
	[MHz]	[dBuV]	[dB/m]	[dBuV/m]	[dBuV/m]	[dB]	
1	4824.6031	47.82	-4.00	43.82	74.00	-30.18	Horizontal
2	6011.6265	45.01	-1.88	43.13	74.00	-30.87	Horizontal
3	8269.4087	43.47	2.00	45.47	74.00	-28.53	Horizontal
4	10409.0511	42.52	3.92	46.44	74.00	-27.56	Horizontal
5	14680.8351	39.60	11.77	51.37	74.00	-22.63	Horizontal
6	17426.1783	37.05	16.74	53.79	74.00	-20.21	Horizontal
7	17701.8377	37.07	17.67	54.74	74.00	-19.26	Horizontal

AV Result:

No.	Frequency	Reading Level	Correct Factor	Result	Limit	Margin	Remark
	[MHz]	[dBuV]	[dB/m]	[dBuV/m]	[dBuV/m]	[dB]	
1	17426.1783	27.44	16.74	44.18	54.00	-9.82	Horizontal
2	17701.8377	26.93	17.67	44.60	54.00	-9.40	Horizontal

- Note: 1. Measurement = Reading Level + Correct Factor,
Correct Factor = Antenna Factor + Loss (Cable + Filter) – Amplifier Gain.
- If Peak Result complies with AV limit, AV Result is deemed to comply with AV limit.
 - Peak detector: RBW: 1 MHz, VBW: 3 MHz.
 - Average detector: RBW: 1 MHz, VBW: 1/T MHz(refer to clause 7.1.).
 - For above 3GHz part, filter losses were only considered in the spurious frequency bands and the authorized band was not corrected for HPF losses.
 - Only the worst case emission was recorded, if it complies with the limit, the other emissions deemed to comply with the limit.

Test Mode	Channel	Polarization	Verdict
11N HT20	LCH	Vertical	PASS



PK Result:

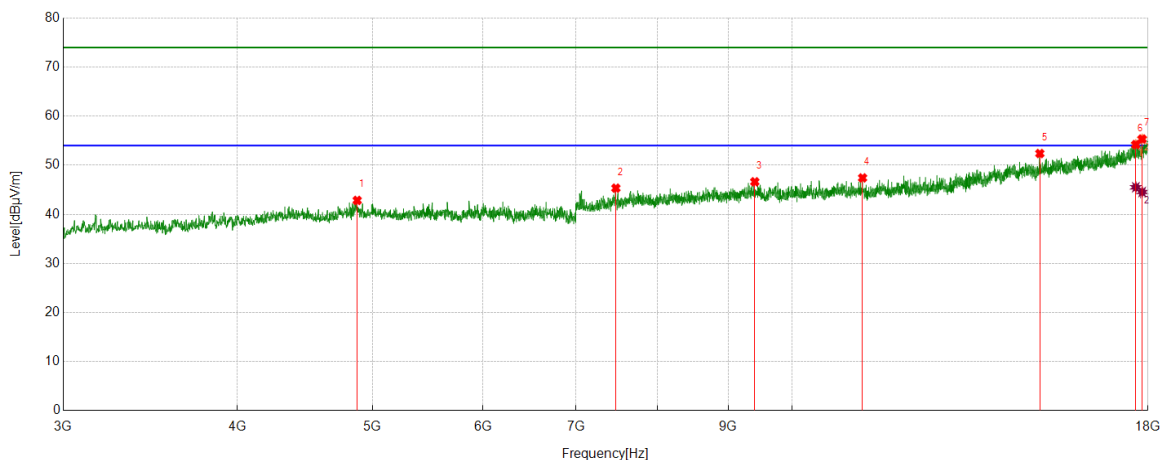
No.	Frequency	Reading Level	Correct Factor	Result	Limit	Margin	Remark
	[MHz]	[dBuV]	[dB/m]	[dBuV/m]	[dBuV/m]	[dB]	
1	3166.8959	53.83	-9.60	44.23	74.00	-29.77	Vertical
2	3986.3733	50.00	-6.98	43.02	74.00	-30.98	Vertical
3	4817.1021	50.17	-4.19	45.98	74.00	-28.02	Vertical
4	7236.1545	49.95	0.08	50.03	74.00	-23.97	Vertical
5	15185.2732	40.63	12.46	53.09	74.00	-20.91	Vertical
6	17518.0648	37.68	17.14	54.82	74.00	-19.18	Vertical
7	17881.8602	35.88	19.07	54.95	74.00	-19.05	Vertical

AV Result:

No.	Frequency	Reading Level	Correct Factor	Result	Limit	Margin	Remark
	[MHz]	[dBuV]	[dB/m]	[dBuV/m]	[dBuV/m]	[dB]	
1	17518.0648	27.35	17.14	44.49	54.00	-9.51	Vertical
2	17881.8602	26.19	19.07	45.26	54.00	-8.74	Vertical

- Note: 1. Measurement = Reading Level + Correct Factor,
Correct Factor = Antenna Factor + Loss (Cable + Filter) – Amplifier Gain.
- If Peak Result complies with AV limit, AV Result is deemed to comply with AV limit.
 - Peak detector: RBW: 1 MHz, VBW: 3 MHz.
 - Average detector: RBW: 1 MHz, VBW: 1/T MHz(refer to clause 7.1.).
 - For above 3GHz part, filter losses were only considered in the spurious frequency bands and the authorized band was not corrected for HPF losses.
 - Only the worst case emission was recorded, if it complies with the limit, the other emissions deemed to comply with the limit.

Test Mode	Channel	Polarization	Verdict
11N HT20	MCH	Horizontal	PASS



PK Result:

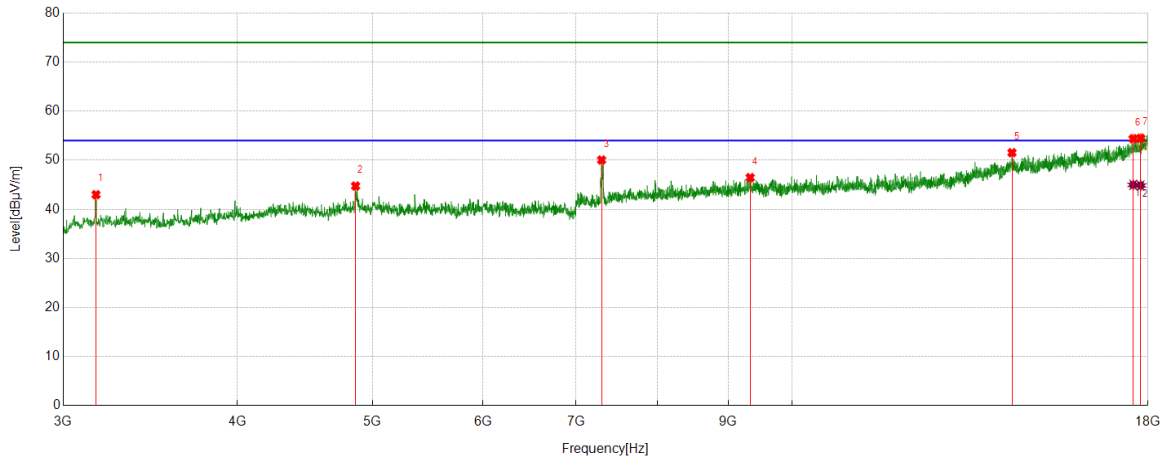
No.	Frequency	Reading Level	Correct Factor	Result	Limit	Margin	Remark
	[MHz]	[dBuV]	[dB/m]	[dBuV/m]	[dBuV/m]	[dB]	
1	4875.2344	46.42	-3.58	42.84	74.00	-31.16	Horizontal
2	7474.3093	44.42	0.91	45.33	74.00	-28.67	Horizontal
3	9402.0503	43.58	3.05	46.63	74.00	-27.37	Horizontal
4	11234.1543	42.28	5.14	47.42	74.00	-26.58	Horizontal
5	15055.882	40.29	12.10	52.39	74.00	-21.61	Horizontal
6	17641.8302	36.39	17.82	54.21	74.00	-19.79	Horizontal
7	17827.4784	37.18	18.16	55.34	74.00	-18.66	Horizontal

AV Result:

No.	Frequency	Reading Level	Correct Factor	Result	Limit	Margin	Remark
	[MHz]	[dBuV]	[dB/m]	[dBuV/m]	[dBuV/m]	[dB]	
1	17641.8302	27.69	17.82	45.51	54.00	-8.49	Horizontal
2	17827.4784	26.39	18.16	44.55	54.00	-9.45	Horizontal

- Note: 1. Measurement = Reading Level + Correct Factor,
Correct Factor = Antenna Factor + Loss (Cable + Filter) – Amplifier Gain.
- If Peak Result complies with AV limit, AV Result is deemed to comply with AV limit.
 - Peak detector: RBW: 1 MHz, VBW: 3 MHz.
 - Average detector: RBW: 1 MHz, VBW: 1/T MHz(refer to clause 7.1.).
 - For above 3GHz part, filter losses were only considered in the spurious frequency bands and the authorized band was not corrected for HPF losses.
 - Only the worst case emission was recorded, if it complies with the limit, the other emissions deemed to comply with the limit.

Test Mode	Channel	Polarization	Verdict
11N HT20	MCH	Vertical	PASS



PK Result:

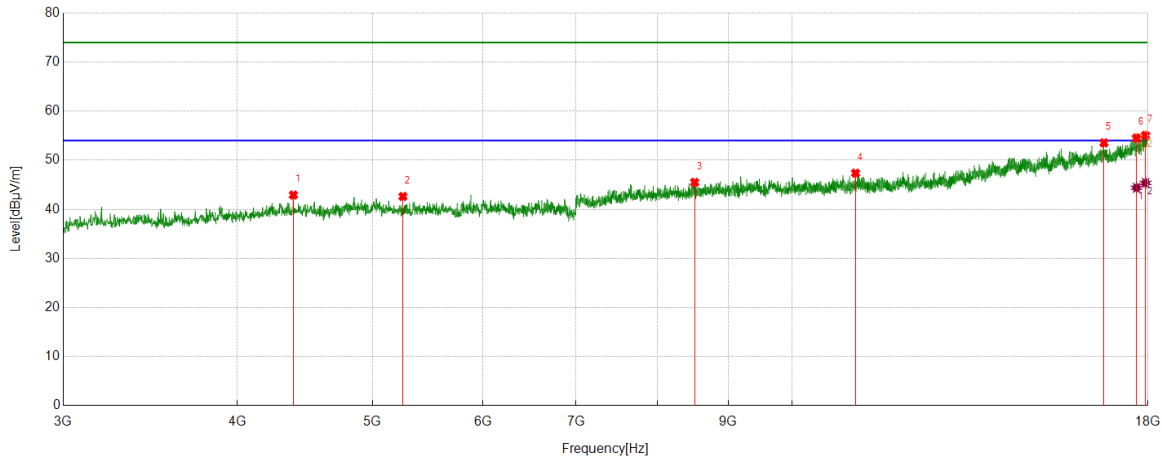
No.	Frequency	Reading Level	Correct Factor	Result	Limit	Margin	Remark
	[MHz]	[dBuV]	[dB/m]	[dBuV/m]	[dBuV/m]	[dB]	
1	3166.8959	52.59	-9.60	42.99	74.00	-31.01	Vertical
2	4862.1078	48.46	-3.71	44.75	74.00	-29.25	Vertical
3	7299.9125	50.22	-0.17	50.05	74.00	-23.95	Vertical
4	9330.7913	43.34	3.12	46.46	74.00	-27.54	Vertical
5	14378.9224	40.31	11.23	51.54	74.00	-22.46	Vertical
6	17564.9456	37.14	17.24	54.38	74.00	-19.62	Vertical
7	17782.4728	36.57	17.92	54.49	74.00	-19.51	Vertical

AV Result:

No.	Frequency	Reading Level	Correct Factor	Result	Limit	Margin	Remark
	[MHz]	[dBuV]	[dB/m]	[dBuV/m]	[dBuV/m]	[dB]	
1	17564.9456	27.74	17.24	44.98	54.00	-9.02	Vertical
2	17782.4728	26.94	17.92	44.86	54.00	-9.14	Vertical

- Note: 1. Measurement = Reading Level + Correct Factor,
Correct Factor = Antenna Factor + Loss (Cable + Filter) – Amplifier Gain.
- If Peak Result complies with AV limit, AV Result is deemed to comply with AV limit.
 - Peak detector: RBW: 1 MHz, VBW: 3 MHz.
 - Average detector: RBW: 1 MHz, VBW: 1/T MHz(refer to clause 7.1.).
 - For above 3GHz part, filter losses were only considered in the spurious frequency bands and the authorized band was not corrected for HPF losses.
 - Only the worst case emission was recorded, if it complies with the limit, the other emissions deemed to comply with the limit.

Test Mode	Channel	Polarization	Verdict
11N HT20	HCH	Horizontal	PASS



PK Result:

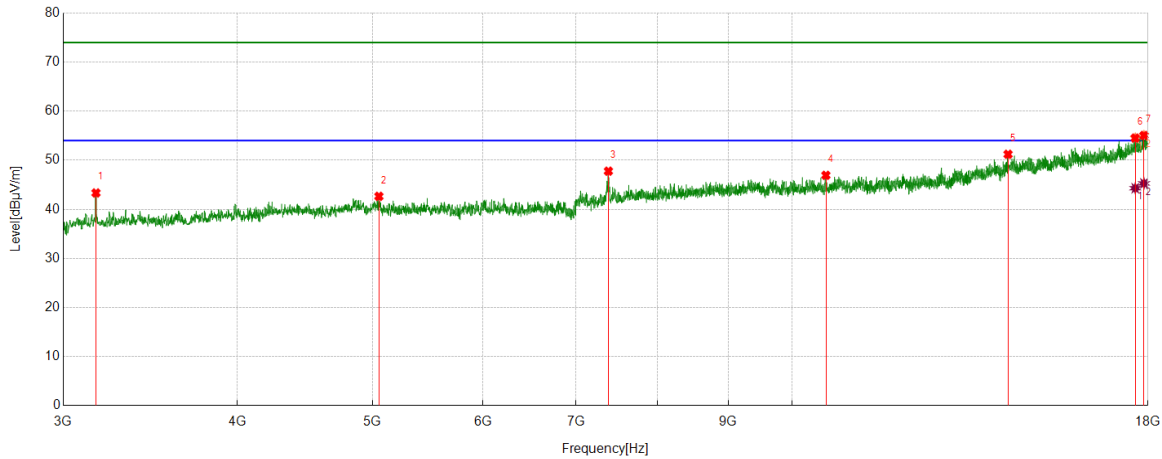
No.	Frequency	Reading Level	Correct Factor	Result	Limit	Margin	Remark
	[MHz]	[dBuV]	[dB/m]	[dBuV/m]	[dBuV/m]	[dB]	
1	4387.6735	48.13	-5.21	42.92	74.00	-31.08	Horizontal
2	5257.7822	46.29	-3.67	42.62	74.00	-31.38	Horizontal
3	8513.1891	43.62	1.88	45.50	74.00	-28.50	Horizontal
4	11104.7631	42.16	5.21	47.37	74.00	-26.63	Horizontal
5	16737.9672	38.61	14.94	53.55	74.00	-20.45	Horizontal
6	17662.4578	36.83	17.69	54.52	74.00	-19.48	Horizontal
7	17928.7411	36.34	18.72	55.06	74.00	-18.94	Horizontal

AV Result:

No.	Frequency	Reading Level	Correct Factor	Result	Limit	Margin	Remark
	[MHz]	[dBuV]	[dB/m]	[dBuV/m]	[dBuV/m]	[dB]	
1	17662.4578	26.70	17.69	44.39	54.00	-9.61	Horizontal
2	17928.7411	26.66	18.72	45.38	54.00	-8.62	Horizontal

- Note: 1. Measurement = Reading Level + Correct Factor,
Correct Factor = Antenna Factor + Loss (Cable + Filter) – Amplifier Gain.
- If Peak Result complies with AV limit, AV Result is deemed to comply with AV limit.
 - Peak detector: RBW: 1 MHz, VBW: 3 MHz.
 - Average detector: RBW: 1 MHz, VBW: 1/T MHz(refer to clause 7.1.).
 - For above 3GHz part, filter losses were only considered in the spurious frequency bands and the authorized band was not corrected for HPF losses.
 - Only the worst case emission was recorded, if it complies with the limit, the other emissions deemed to comply with the limit.

Test Mode	Channel	Polarization	Verdict
11N HT20	HCH	Vertical	PASS



PK Result:

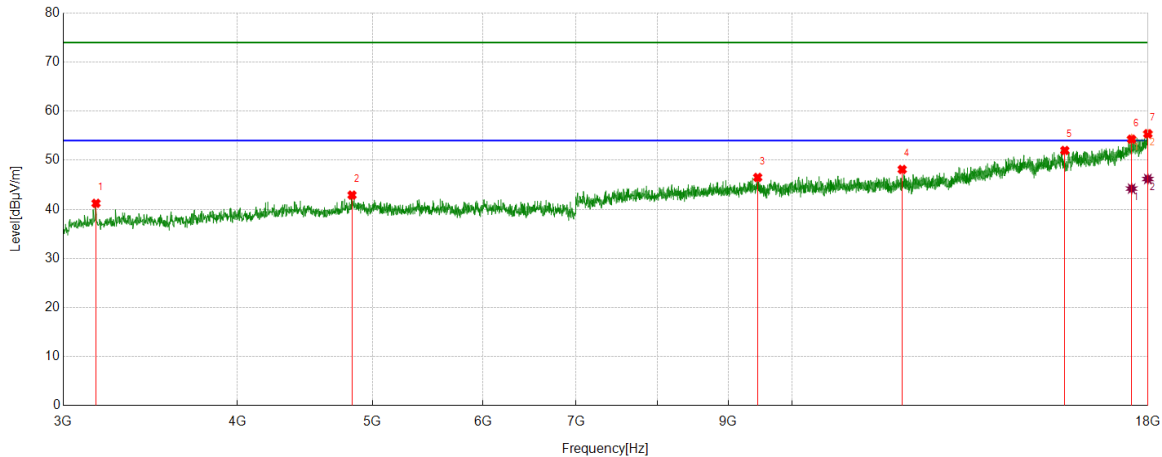
No.	Frequency	Reading Level	Correct Factor	Result	Limit	Margin	Remark
	[MHz]	[dBuV]	[dB/m]	[dBuV/m]	[dBuV/m]	[dB]	
1	3166.8959	52.94	-9.60	43.34	74.00	-30.66	Vertical
2	5053.3817	45.74	-3.09	42.65	74.00	-31.35	Vertical
3	7382.4228	47.76	0.02	47.78	74.00	-26.22	Vertical
4	10574.0718	42.47	4.46	46.93	74.00	-27.07	Vertical
5	14285.1606	39.42	11.79	51.21	74.00	-22.79	Vertical
6	17624.9531	37.08	17.44	54.52	74.00	-19.48	Vertical
7	17881.8602	35.98	19.07	55.05	74.00	-18.95	Vertical

AV Result:

No.	Frequency	Reading Level	Correct Factor	Result	Limit	Margin	Remark
	[MHz]	[dBuV]	[dB/m]	[dBuV/m]	[dBuV/m]	[dB]	
1	17624.9531	26.86	17.44	44.30	54.00	-9.70	Vertical
2	17881.8602	26.21	19.07	45.28	54.00	-8.72	Vertical

- Note: 1. Measurement = Reading Level + Correct Factor,
Correct Factor = Antenna Factor + Loss (Cable + Filter) – Amplifier Gain.
- If Peak Result complies with AV limit, AV Result is deemed to comply with AV limit.
 - Peak detector: RBW: 1 MHz, VBW: 3 MHz.
 - Average detector: RBW: 1 MHz, VBW: 1/T MHz(refer to clause 7.1.).
 - For above 3GHz part, filter losses were only considered in the spurious frequency bands and the authorized band was not corrected for HPF losses.
 - Only the worst case emission was recorded, if it complies with the limit, the other emissions deemed to comply with the limit.

Test Mode	Channel	Polarization	Verdict
11N HT40	LCH	Horizontal	PASS



PK Result:

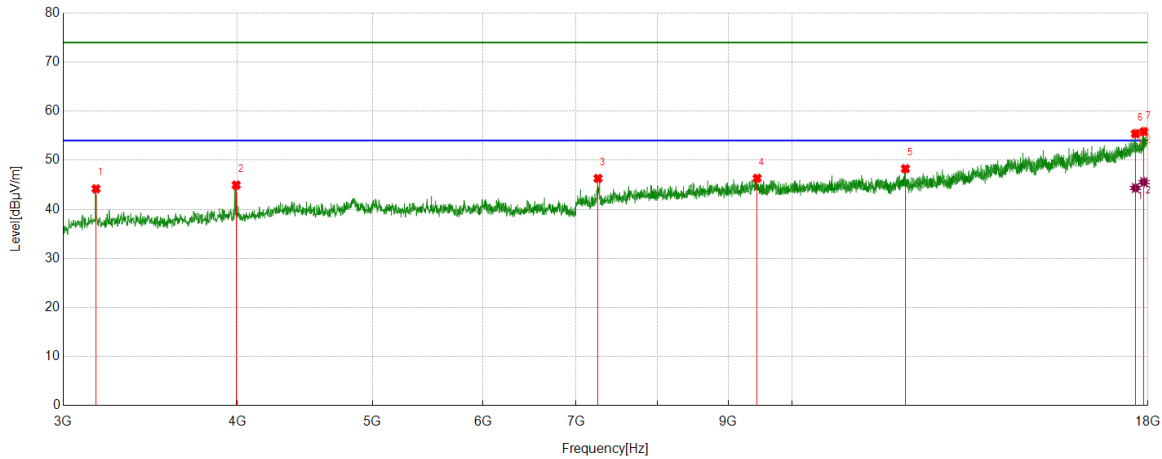
No.	Frequency	Reading Level	Correct Factor	Result	Limit	Margin	Remark
	[MHz]	[dBuV]	[dB/m]	[dBuV/m]	[dBuV/m]	[dB]	
1	3166.8959	50.82	-9.60	41.22	74.00	-32.78	Horizontal
2	4833.9792	46.61	-3.71	42.90	74.00	-31.10	Horizontal
3	9447.0559	42.85	3.64	46.49	74.00	-27.51	Horizontal
4	11993.6242	41.78	6.34	48.12	74.00	-25.88	Horizontal
5	15689.7112	38.09	13.90	51.99	74.00	-22.01	Horizontal
6	17519.94	37.16	17.12	54.28	74.00	-19.72	Horizontal
7	17996.2495	36.70	18.69	55.39	74.00	-18.61	Horizontal

AV Result:

No.	Frequency	Reading Level	Correct Factor	Result	Limit	Margin	Remark
	[MHz]	[dBuV]	[dB/m]	[dBuV/m]	[dBuV/m]	[dB]	
1	17519.94	27.10	17.12	44.22	54.00	-9.78	Horizontal
2	17996.2495	27.49	18.69	46.18	54.00	-7.82	Horizontal

- Note: 1. Measurement = Reading Level + Correct Factor,
Correct Factor = Antenna Factor + Loss (Cable + Filter) – Amplifier Gain.
2. If Peak Result complies with AV limit, AV Result is deemed to comply with AV limit.
3. Peak detector: RBW: 1 MHz, VBW: 3 MHz.
4. Average detector: RBW: 1 MHz, VBW: 1/T MHz(refer to clause 7.1.).
5. For above 3GHz part, filter losses were only considered in the spurious frequency bands and the authorized band was not corrected for HPF losses.
6. Only the worst case emission was recorded, if it complies with the limit, the other emissions deemed to comply with the limit.

Test Mode	Channel	Polarization	Verdict
11N HT40	LCH	Vertical	PASS



PK Result:

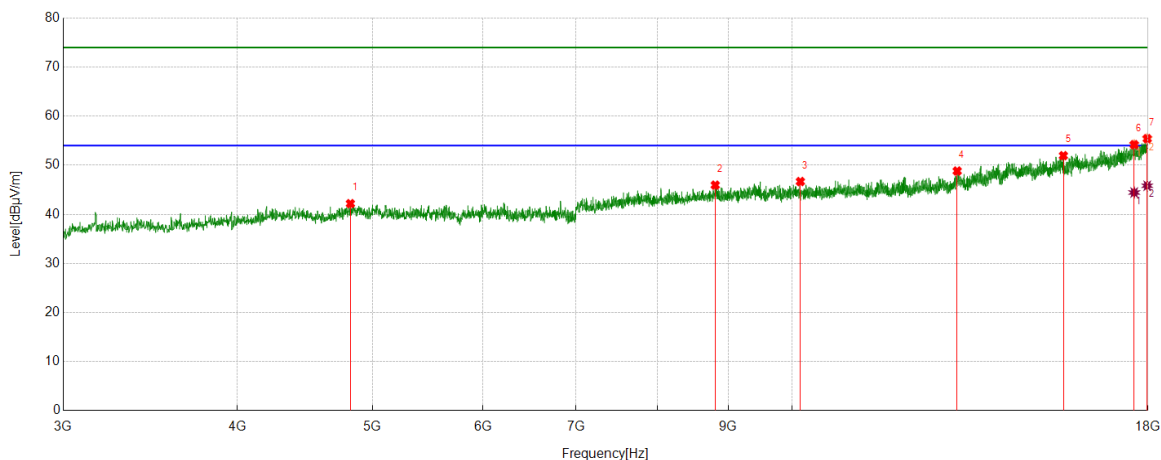
No.	Frequency	Reading Level	Correct Factor	Result	Limit	Margin	Remark
	[MHz]	[dBuV]	[dB/m]	[dBuV/m]	[dBuV/m]	[dB]	
1	3166.8959	53.79	-9.60	44.19	74.00	-29.81	Vertical
2	3991.999	52.01	-7.07	44.94	74.00	-29.06	Vertical
3	7256.7821	46.33	-0.03	46.30	74.00	-27.70	Vertical
4	9437.6797	42.69	3.63	46.32	74.00	-27.68	Vertical
5	12057.3822	41.64	6.63	48.27	74.00	-25.73	Vertical
6	17632.4541	38.03	17.38	55.41	74.00	-18.59	Vertical
7	17879.985	36.80	19.02	55.82	74.00	-18.18	Vertical

AV Result:

No.	Frequency	Reading Level	Correct Factor	Result	Limit	Margin	Remark
	[MHz]	[dBuV]	[dB/m]	[dBuV/m]	[dBuV/m]	[dB]	
1	17632.4541	26.97	17.38	44.35	54.00	-9.65	Vertical
2	17879.985	26.53	19.02	45.55	54.00	-8.45	Vertical

- Note: 1. Measurement = Reading Level + Correct Factor,
Correct Factor = Antenna Factor + Loss (Cable + Filter) – Amplifier Gain.
- If Peak Result complies with AV limit, AV Result is deemed to comply with AV limit.
 - Peak detector: RBW: 1 MHz, VBW: 3 MHz.
 - Average detector: RBW: 1 MHz, VBW: 1/T MHz(refer to clause 7.1.).
 - For above 3GHz part, filter losses were only considered in the spurious frequency bands and the authorized band was not corrected for HPF losses.
 - Only the worst case emission was recorded, if it complies with the limit, the other emissions deemed to comply with the limit.

Test Mode	Channel	Polarization	Verdict
11N HT40	MCH	Horizontal	PASS



PK Result:

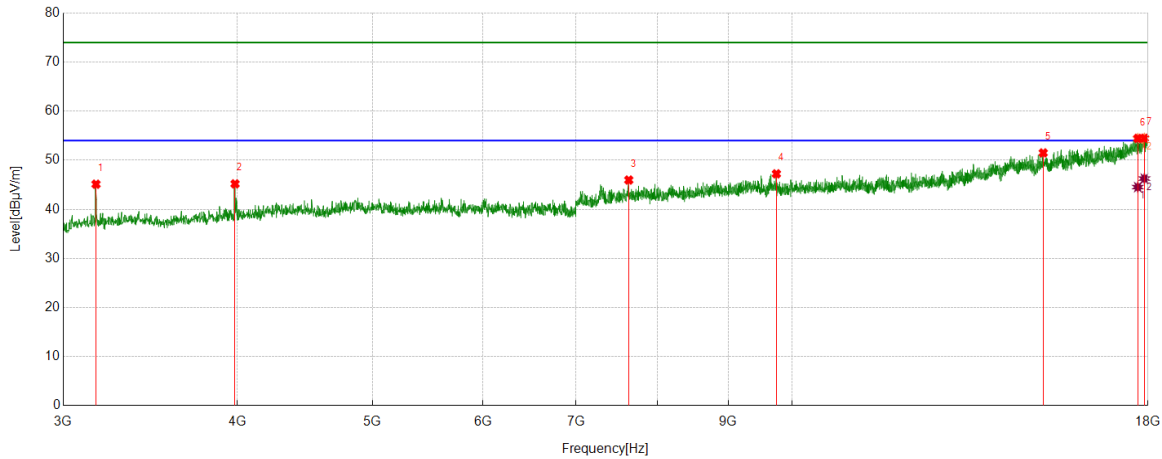
No.	Frequency	Reading Level	Correct Factor	Result	Limit	Margin	Remark
	[MHz]	[dBuV]	[dB/m]	[dBuV/m]	[dBuV/m]	[dB]	
1	4820.8526	46.37	-4.19	42.18	74.00	-31.82	Horizontal
2	8807.601	43.25	2.70	45.95	74.00	-28.05	Horizontal
3	10137.1421	42.89	3.79	46.68	74.00	-27.32	Horizontal
4	13133.7667	40.66	8.16	48.82	74.00	-25.18	Horizontal
5	15652.2065	38.46	13.49	51.95	74.00	-22.05	Horizontal
6	17594.9494	36.58	17.61	54.19	74.00	-19.81	Horizontal
7	17977.4972	36.75	18.67	55.42	74.00	-18.58	Horizontal

AV Result:

No.	Frequency	Reading Level	Correct Factor	Result	Limit	Margin	Remark
	[MHz]	[dBuV]	[dB/m]	[dBuV/m]	[dBuV/m]	[dB]	
1	17594.9494	26.83	17.61	44.44	54.00	-9.56	Horizontal
2	17977.4972	27.15	18.67	45.82	54.00	-8.18	Horizontal

- Note: 1. Measurement = Reading Level + Correct Factor,
Correct Factor = Antenna Factor + Loss (Cable + Filter) – Amplifier Gain.
- If Peak Result complies with AV limit, AV Result is deemed to comply with AV limit.
 - Peak detector: RBW: 1 MHz, VBW: 3 MHz.
 - Average detector: RBW: 1 MHz, VBW: 1/T MHz(refer to clause 7.1.).
 - For above 3GHz part, filter losses were only considered in the spurious frequency bands and the authorized band was not corrected for HPF losses.
 - Only the worst case emission was recorded, if it complies with the limit, the other emissions deemed to comply with the limit.

Test Mode	Channel	Polarization	Verdict
11N HT40	MCH	Vertical	PASS



PK Result:

No.	Frequency	Reading Level	Correct Factor	Result	Limit	Margin	Remark
	[MHz]	[dBuV]	[dB/m]	[dBuV/m]	[dBuV/m]	[dB]	
1	3166.8959	54.72	-9.60	45.12	74.00	-28.88	Vertical
2	3984.4981	52.09	-6.90	45.19	74.00	-28.81	Vertical
3	7635.5794	44.30	1.67	45.97	74.00	-28.03	Vertical
4	9743.3429	43.89	3.34	47.23	74.00	-26.77	Vertical
5	15140.2675	39.81	11.69	51.50	74.00	-22.50	Vertical
6	17699.9625	36.83	17.62	54.45	74.00	-19.55	Vertical
7	17893.1116	35.22	19.26	54.48	74.00	-19.52	Vertical

AV Result:

No.	Frequency	Reading Level	Correct Factor	Result	Limit	Margin	Remark
	[MHz]	[dBuV]	[dB/m]	[dBuV/m]	[dBuV/m]	[dB]	
1	17699.9625	26.91	17.62	44.53	54.00	-9.47	Vertical
2	17893.1116	27.00	19.26	46.26	54.00	-7.74	Vertical

- Note: 1. Measurement = Reading Level + Correct Factor,
Correct Factor = Antenna Factor + Loss (Cable + Filter) – Amplifier Gain.
- If Peak Result complies with AV limit, AV Result is deemed to comply with AV limit.
 - Peak detector: RBW: 1 MHz, VBW: 3 MHz.
 - Average detector: RBW: 1 MHz, VBW: 1/T MHz(refer to clause 7.1.).
 - For above 3GHz part, filter losses were only considered in the spurious frequency bands and the authorized band was not corrected for HPF losses.
 - Only the worst case emission was recorded, if it complies with the limit, the other emissions deemed to comply with the limit.