

Test Plot 1#:Wi-Fi 2.4G Mode B_Body Back_Middle Channel**DUT: OtoSys; Type: OtoSys IM600; Serial: 17101600121**

Communication System: IEEE 802.11b WiFi 2.4 GHz; Frequency: 2442 MHz;Duty Cycle: 1:1

Medium parameters used: $f = 2442$ MHz; $\sigma = 1.983$ S/m; $\epsilon_r = 51.776$; $\rho = 1000$ kg/m³

Phantom section: Flat Section

DASY5 Configuration:

- Probe: EX3DV4 - SN3619; ConvF(6.73, 6.73, 6.73); Calibrated: 2017/9/25;
- Sensor-Surface: 1.4mm (Mechanical Surface Detection)
- Electronics: DAE4 Sn1459; Calibrated: 2017/9/15
- Phantom: SAM (30deg probe tilt) with CRP v5.0_20150321; Type: QD000P40CD; Serial: TP:1874
- Measurement SW: DASY52, Version 52.8 (8);

Area Scan (81x121x1): Interpolated grid: dx=1.200 mm, dy=1.200 mm

Maximum value of SAR (interpolated) = 0.371 W/kg

Zoom Scan (5x5x7)/Cube 0: Measurement grid: dx=8mm, dy=8mm, dz=5mm

Reference Value = 9.988 V/m; Power Drift = -0.07 dB

Peak SAR (extrapolated) = 0.452 W/kg

SAR(1 g) = 0.208 W/kg; SAR(10 g) = 0.101 W/kg

Maximum value of SAR (measured) = 0.340 W/kg



Test Plot 2#:Wi-Fi 2.4G Mode B_Body Top_Middle Channel**DUT: OtoSys; Type: OtoSys IM600; Serial: 17101600121**

Communication System: IEEE 802.11b WiFi 2.4 GHz; Frequency: 2442 MHz;Duty Cycle: 1:1

Medium parameters used: $f = 2442$ MHz; $\sigma = 1.983$ S/m; $\epsilon_r = 51.776$; $\rho = 1000$ kg/m³

Phantom section: Flat Section

DASY5 Configuration:

- Probe: EX3DV4 - SN3619; ConvF(6.73, 6.73, 6.73); Calibrated: 2017/9/25;
- Sensor-Surface: 1.4mm (Mechanical Surface Detection)
- Electronics: DAE4 Sn1459; Calibrated: 2017/9/15
- Phantom: SAM (30deg probe tilt) with CRP v5.0_20150321; Type: QD000P40CD; Serial: TP:1874
- Measurement SW: DASY52, Version 52.8 (8);

Area Scan (81x111x1): Interpolated grid: dx=1.200 mm, dy=1.200 mm

Maximum value of SAR (interpolated) = 0.292 W/kg

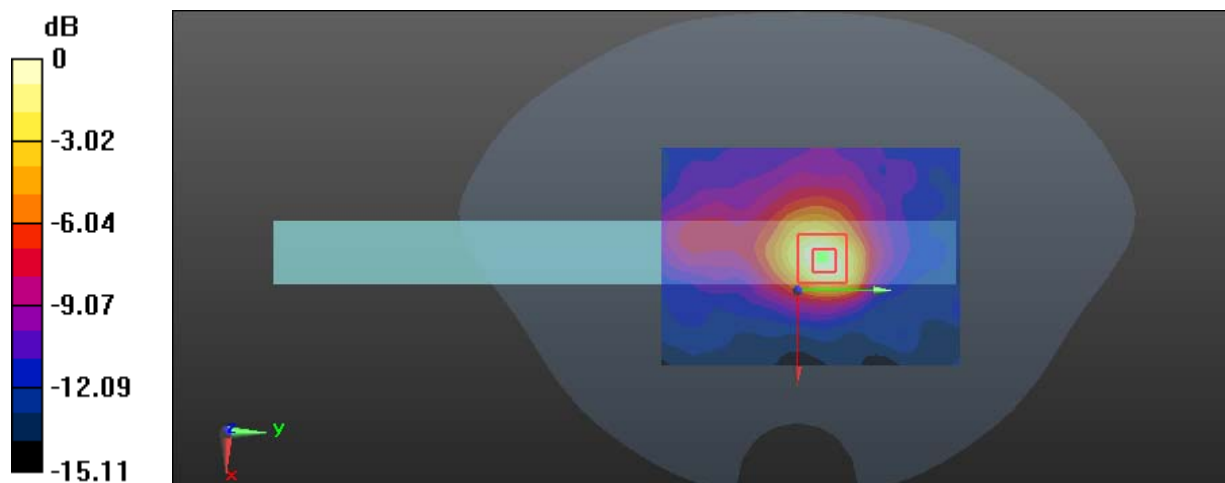
Zoom Scan (5x5x7)/Cube 0: Measurement grid: dx=8mm, dy=8mm, dz=5mm

Reference Value = 8.219 V/m; Power Drift = -0.11 dB

Peak SAR (extrapolated) = 0.373 W/kg

SAR(1 g) = 0.181 W/kg; SAR(10 g) = 0.091 W/kg

Maximum value of SAR (measured) = 0.292 W/kg



0 dB = 0.292 W/kg = -5.35 dBW/kg

Test Plot 3#:Wi-Fi 5.2G Mode A_Body Back_Low Channel

DUT: OtoSys; Type: OtoSys IM600; Serial: 17101600121

Communication System: IEEE 802.11a WiFi 5.2 GHz; Frequency: 5180 MHz;Duty Cycle: 1:1

Medium parameters used: $f = 5180 \text{ MHz}$; $\sigma = 5.318 \text{ S/m}$; $\epsilon_r = 48.732$; $\rho = 1000 \text{ kg/m}^3$

Phantom section: Flat Section

DASY5 Configuration:

- Probe: EX3DV4 - SN3619; ConvF(4.28, 4.28, 4.28); Calibrated: 2017/9/25;
- Sensor-Surface: 1.4mm (Mechanical Surface Detection)
- Electronics: DAE4 Sn1459; Calibrated: 2017/9/15
- Phantom: SAM (30deg probe tilt) with CRP v5.0_20150321; Type: QD000P40CD; Serial: TP:1874
- Measurement SW: DASY52, Version 52.8 (8);

Area Scan (101x141x1): Interpolated grid: $dx=1.000 \text{ mm}$, $dy=1.000 \text{ mm}$

Maximum value of SAR (interpolated) = 2.16 W/kg

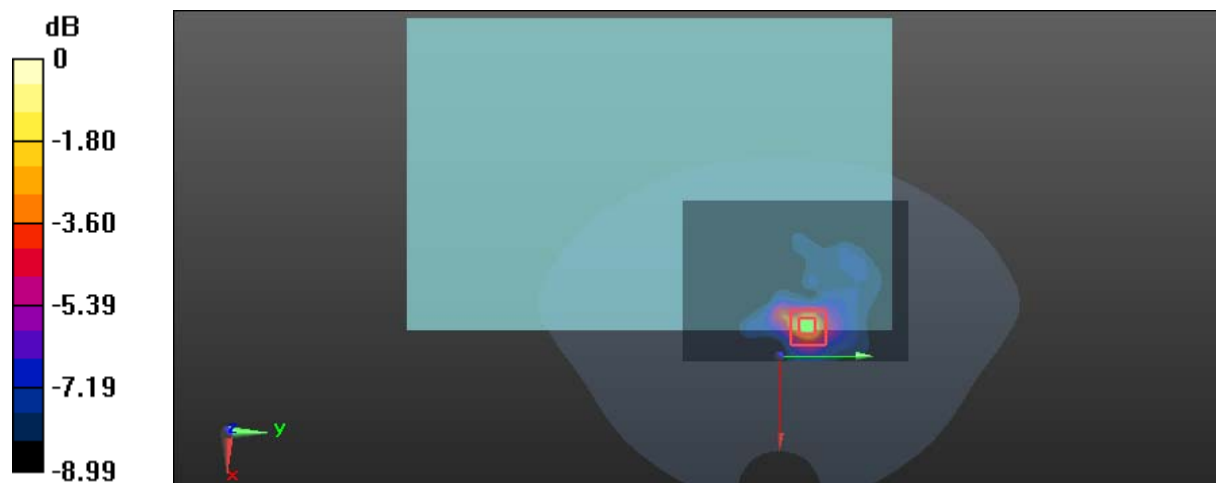
Zoom Scan (7x7x6)/Cube 0: Measurement grid: $dx=5\text{mm}$, $dy=5\text{mm}$, $dz=2\text{mm}$

Reference Value = 8.825 V/m; Power Drift = 0.14 dB

Peak SAR (extrapolated) = 3.92 W/kg

SAR(1 g) = 1.13 W/kg; SAR(10 g) = 0.538 W/kg

Maximum value of SAR (measured) = 2.28 W/kg



0 dB = 2.28 W/kg = 3.58 dBW/kg

Test Plot 4#:Wi-Fi 5.2G Mode A_Body Back_Middle Channel**DUT: OtoSys; Type: OtoSys IM600; Serial: 17101600121**

Communication System: IEEE 802.11a WiFi 5.2 GHz; Frequency: 5200 MHz;Duty Cycle: 1:1

Medium parameters used: $f = 5200$ MHz; $\sigma = 5.347$ S/m; $\epsilon_r = 48.659$; $\rho = 1000$ kg/m³

Phantom section: Flat Section

DASY5 Configuration:

- Probe: EX3DV4 - SN3619; ConvF(4.28, 4.28, 4.28); Calibrated: 2017/9/25;
- Sensor-Surface: 1.4mm (Mechanical Surface Detection)
- Electronics: DAE4 Sn1459; Calibrated: 2017/9/15
- Phantom: SAM (30deg probe tilt) with CRP v5.0_20150321; Type: QD000P40CD; Serial: TP:1874
- Measurement SW: DASY52, Version 52.8 (8);

Area Scan (101x141x1): Interpolated grid: dx=1.000 mm, dy=1.000 mm

Maximum value of SAR (interpolated) = 1.99 W/kg

Zoom Scan (7x7x6)/Cube 0: Measurement grid: dx=5mm, dy=5mm, dz=2mm

Reference Value = 7.517 V/m; Power Drift = -0.12 dB

Peak SAR (extrapolated) = 3.47 W/kg

SAR(1 g) = 1.01 W/kg; SAR(10 g) = 0.526 W/kg

Maximum value of SAR (measured) = 2.02 W/kg



0 dB = 2.02 W/kg = 3.05 dBW/kg

Test Plot 5#:Wi-Fi 5.2G Mode A_Body Back_High Channel

DUT: OtoSys; Type: OtoSys IM600; Serial: 17101600121

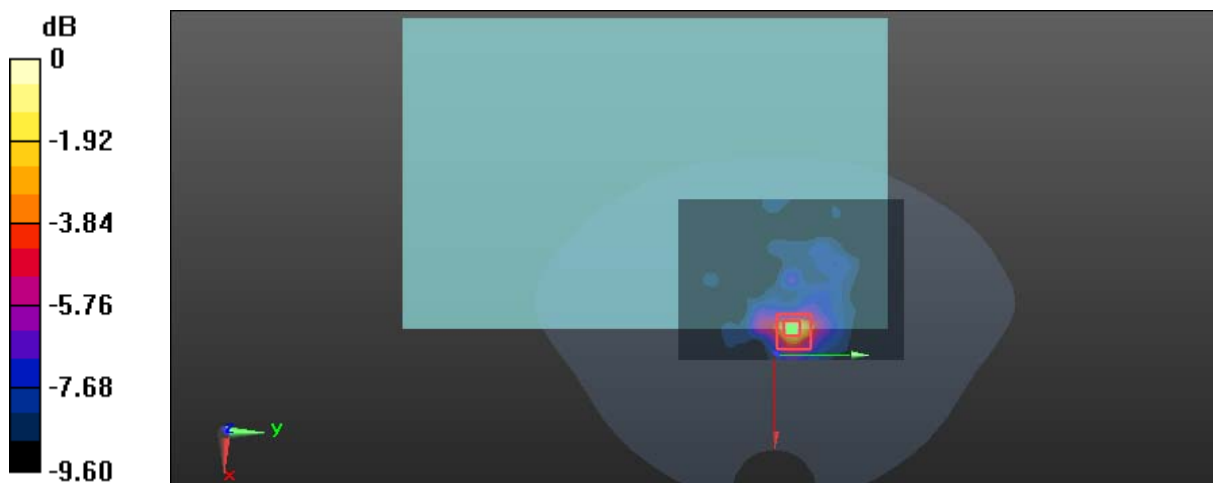
Communication System: IEEE 802.11a WiFi 5.2 GHz; Frequency: 5240 MHz;Duty Cycle: 1:1
 Medium parameters used: $f = 5240 \text{ MHz}$; $\sigma = 5.369 \text{ S/m}$; $\epsilon_r = 48.615$; $\rho = 1000 \text{ kg/m}^3$
 Phantom section: Flat Section

DASY5 Configuration:

- Probe: EX3DV4 - SN3619; ConvF(4.28, 4.28, 4.28); Calibrated: 2017/9/25;
- Sensor-Surface: 1.4mm (Mechanical Surface Detection)
- Electronics: DAE4 Sn1459; Calibrated: 2017/9/15
- Phantom: SAM (30deg probe tilt) with CRP v5.0_20150321; Type: QD000P40CD; Serial: TP:1874
- Measurement SW: DASY52, Version 52.8 (8);

Area Scan (101x141x1): Interpolated grid: $dx=1.000 \text{ mm}$, $dy=1.000 \text{ mm}$
 Maximum value of SAR (interpolated) = 2.39 W/kg

Zoom Scan (7x7x6)/Cube 0: Measurement grid: $dx=5\text{mm}$, $dy=5\text{mm}$, $dz=2\text{mm}$
 Reference Value = 8.753 V/m; Power Drift = -0.03 dB
 Peak SAR (extrapolated) = 4.33 W/kg
SAR(1 g) = 1.11 W/kg; SAR(10 g) = 0.508 W/kg
 Maximum value of SAR (measured) = 2.29 W/kg



0 dB = 2.29 W/kg = 3.60 dBW/kg

Test Plot 6#:Wi-Fi 5.2G Mode A_Body Top_Middle Channel**DUT: OtoSys; Type: OtoSys IM600; Serial: 17101600121**

Communication System: IEEE 802.11a WiFi 5.2 GHz; Frequency: 5200 MHz;Duty Cycle: 1:1

Medium parameters used: $f = 5200$ MHz; $\sigma = 5.347$ S/m; $\epsilon_r = 48.659$; $\rho = 1000$ kg/m³

Phantom section: Flat Section

DASY5 Configuration:

- Probe: EX3DV4 - SN3619; ConvF(4.28, 4.28, 4.28); Calibrated: 2017/9/25;
- Sensor-Surface: 1.4mm (Mechanical Surface Detection)
- Electronics: DAE4 Sn1459; Calibrated: 2017/9/15
- Phantom: SAM (30deg probe tilt) with CRP v5.0_20150321; Type: QD000P40CD; Serial: TP:1874
- Measurement SW: DASY52, Version 52.8 (8);

Area Scan (101x141x1): Interpolated grid: dx=1.000 mm, dy=1.000 mm

Maximum value of SAR (interpolated) = 0.841 W/kg

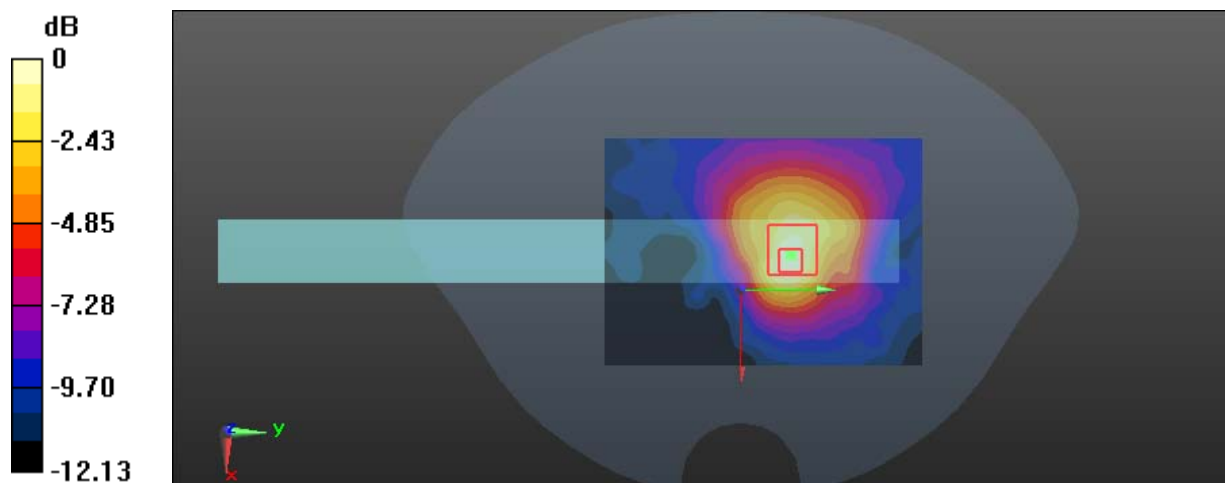
Zoom Scan (7x7x6)/Cube 0: Measurement grid: dx=5mm, dy=5mm, dz=2mm

Reference Value = 5.898 V/m; Power Drift = -0.08 dB

Peak SAR (extrapolated) = 1.38 W/kg

SAR(1 g) = 0.430 W/kg; SAR(10 g) = 0.212 W/kg

Maximum value of SAR (measured) = 0.854 W/kg



0 dB = 0.854 W/kg = -0.69 dBW/kg

Test Plot 7#:Wi-Fi 5.8G Mode A_Body Back_Low Channel**DUT: OtoSys; Type: OtoSys IM600; Serial: 17101600121**

Communication System: IEEE 802.11a WiFi 5.8 GHz; Frequency: 5745 MHz;Duty Cycle: 1:1

Medium parameters used: $f = 5745$ MHz; $\sigma = 6.015$ S/m; $\epsilon_r = 48.091$; $\rho = 1000$ kg/m³

Phantom section: Flat Section

DASY5 Configuration:

- Probe: EX3DV4 - SN3619; ConvF(4, 4, 4); Calibrated: 2017/9/25;
- Sensor-Surface: 1.4mm (Mechanical Surface Detection)
- Electronics: DAE4 Sn1459; Calibrated: 2017/9/15
- Phantom: SAM (30deg probe tilt) with CRP v5.0_20150321; Type: QD000P40CD; Serial: TP:1874
- Measurement SW: DASY52, Version 52.8 (8);

Area Scan (101x141x1): Interpolated grid: dx=1.000 mm, dy=1.000 mm

Maximum value of SAR (interpolated) = 2.54 W/kg

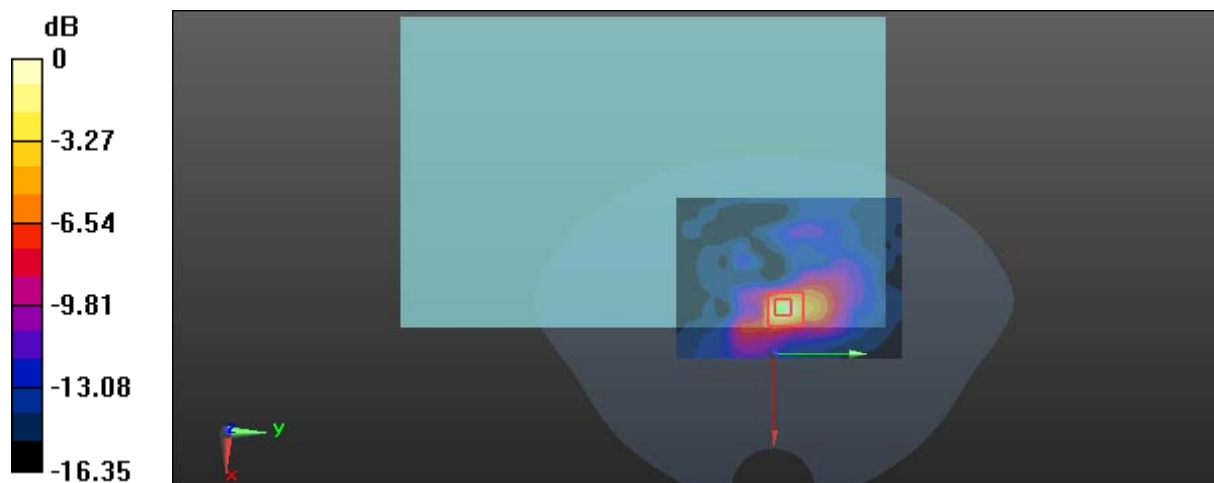
Zoom Scan (7x7x6)/Cube 0: Measurement grid: dx=5mm, dy=5mm, dz=2mm

Reference Value = 7.382 V/m; Power Drift = 0.18 dB

Peak SAR (extrapolated) = 5.26 W/kg

SAR(1 g) = 1.14 W/kg; SAR(10 g) = 0.374 W/kg

Maximum value of SAR (measured) = 2.60 W/kg



0 dB = 2.60 W/kg = 4.15 dBW/kg

Test Plot 8#:Wi-Fi 5.8G Mode A_Body Back_Middle Channel

DUT: OtoSys; Type: OtoSys IM600; Serial: 17101600121

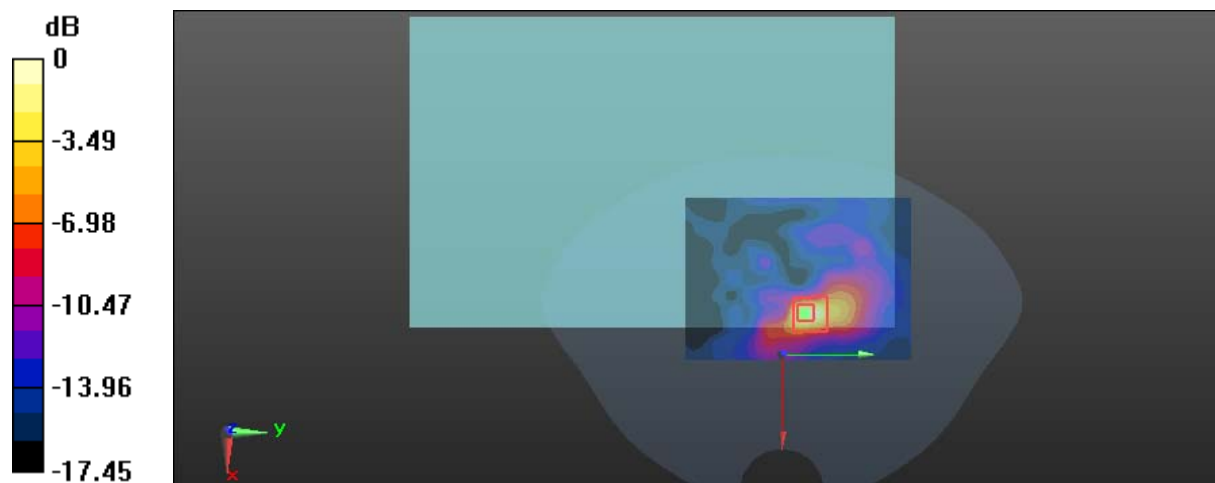
Communication System: IEEE 802.11a WiFi 5.8 GHz; Frequency: 5785 MHz;Duty Cycle: 1:1
 Medium parameters used: $f = 5785 \text{ MHz}$; $\sigma = 6.027 \text{ S/m}$; $\epsilon_r = 47.984$; $\rho = 1000 \text{ kg/m}^3$
 Phantom section: Flat Section

DASY5 Configuration:

- Probe: EX3DV4 - SN3619; ConvF(4, 4, 4); Calibrated: 2017/9/25;
- Sensor-Surface: 1.4mm (Mechanical Surface Detection)
- Electronics: DAE4 Sn1459; Calibrated: 2017/9/15
- Phantom: SAM (30deg probe tilt) with CRP v5.0_20150321; Type: QD000P40CD; Serial: TP:1874
- Measurement SW: DASY52, Version 52.8 (8);

Area Scan (101x141x1): Interpolated grid: $dx=1.000 \text{ mm}$, $dy=1.000 \text{ mm}$
 Maximum value of SAR (interpolated) = 3.29 W/kg

Zoom Scan (7x7x6)/Cube 0: Measurement grid: $dx=5\text{mm}$, $dy=5\text{mm}$, $dz=2\text{mm}$
 Reference Value = 7.059 V/m; Power Drift = -0.17 dB
 Peak SAR (extrapolated) = 5.47 W/kg
SAR(1 g) = 1.20 W/kg; SAR(10 g) = 0.403 W/kg
 Maximum value of SAR (measured) = 2.97 W/kg



0 dB = 2.97 W/kg = 4.73 dBW/kg

Test Plot 9#:Wi-Fi 5.8G Mode A_Body Back_High Channel

DUT: OtoSys; Type: OtoSys IM600; Serial: 17101600121

Communication System: IEEE 802.11a WiFi 5.8 GHz; Frequency: 5825 MHz;Duty Cycle: 1:1

Medium parameters used: $f = 5825$ MHz; $\sigma = 6.091$ S/m; $\epsilon_r = 47.632$; $\rho = 1000$ kg/m³

Phantom section: Flat Section

DASY5 Configuration:

- Probe: EX3DV4 - SN3619; ConvF(4, 4, 4); Calibrated: 2017/9/25;
- Sensor-Surface: 1.4mm (Mechanical Surface Detection)
- Electronics: DAE4 Sn1459; Calibrated: 2017/9/15
- Phantom: SAM (30deg probe tilt) with CRP v5.0_20150321; Type: QD000P40CD; Serial: TP:1874
- Measurement SW: DASY52, Version 52.8 (8);

Area Scan (101x141x1): Interpolated grid: dx=1.000 mm, dy=1.000 mm

Maximum value of SAR (interpolated) = 3.09 W/kg

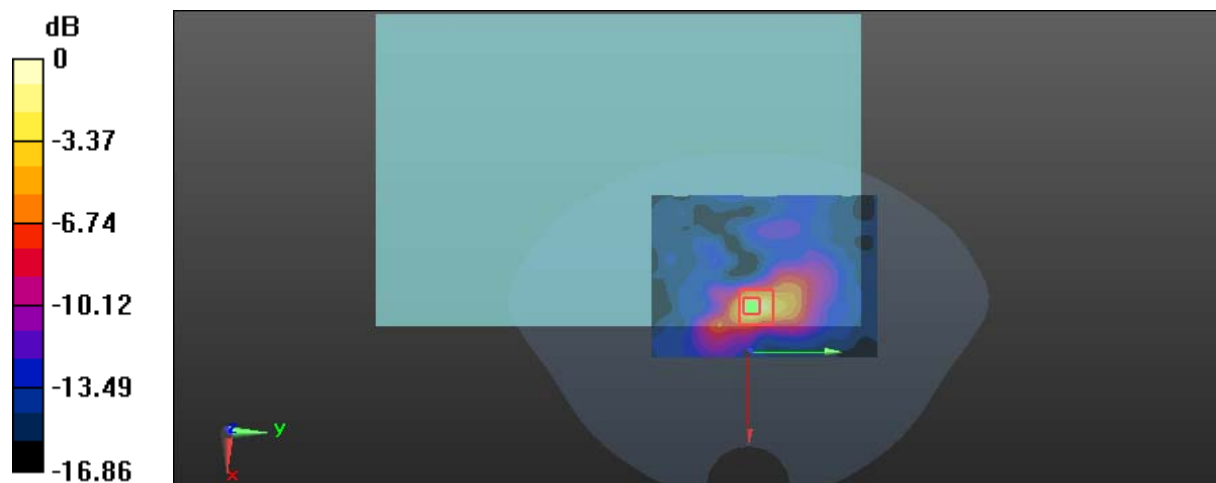
Zoom Scan (7x7x6)/Cube 0: Measurement grid: dx=5mm, dy=5mm, dz=2mm

Reference Value = 7.631 V/m; Power Drift = 0.03 dB

Peak SAR (extrapolated) = 5.65 W/kg

SAR(1 g) = 1.21 W/kg; SAR(10 g) = 0.417 W/kg

Maximum value of SAR (measured) = 3.04 W/kg



0 dB = 3.04 W/kg = 4.83 dBW/kg

Test Plot 10#:Wi-Fi 5.8G Mode A_Body Top_Middle Channel

DUT: OtoSys; Type: OtoSys IM600; Serial: 17101600121

Communication System: IEEE 802.11a WiFi 5.8 GHz; Frequency: 5785 MHz;Duty Cycle: 1:1

Medium parameters used: $f = 5785 \text{ MHz}$; $\sigma = 6.027 \text{ S/m}$; $\epsilon_r = 47.984$; $\rho = 1000 \text{ kg/m}^3$

Phantom section: Flat Section

DASY5 Configuration:

- Probe: EX3DV4 - SN3619; ConvF(4, 4, 4); Calibrated: 2017/9/25;
- Sensor-Surface: 1.4mm (Mechanical Surface Detection)
- Electronics: DAE4 Sn1459; Calibrated: 2017/9/15
- Phantom: SAM (30deg probe tilt) with CRP v5.0_20150321; Type: QD000P40CD; Serial: TP:1874
- Measurement SW: DASY52, Version 52.8 (8);

Area Scan (101x141x1): Interpolated grid: $dx=1.000 \text{ mm}$, $dy=1.000 \text{ mm}$

Maximum value of SAR (interpolated) = 0.716 W/kg

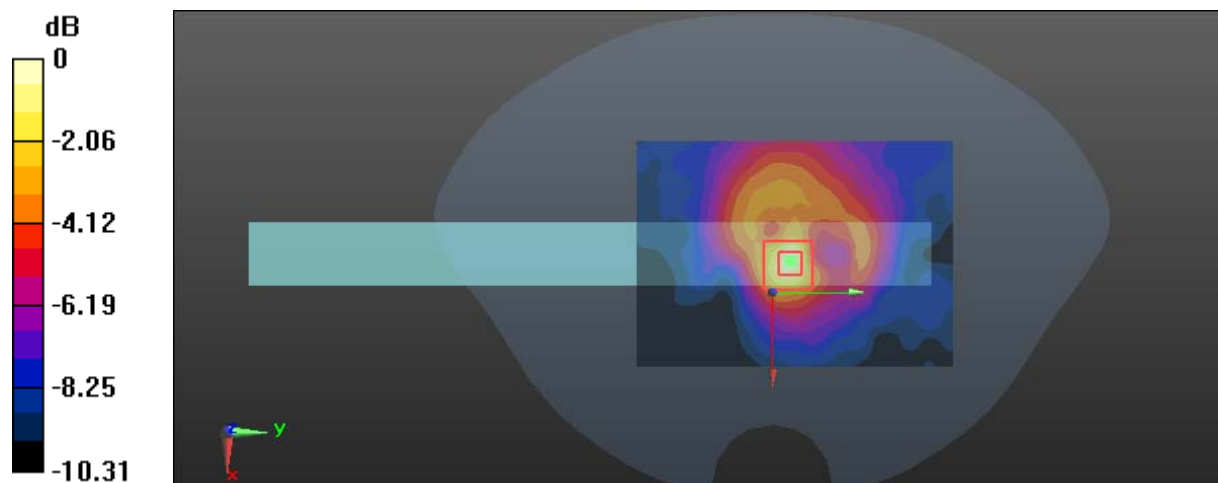
Zoom Scan (7x7x6)/Cube 0: Measurement grid: $dx=5\text{mm}$, $dy=5\text{mm}$, $dz=2\text{mm}$

Reference Value = 6.694 V/m; Power Drift = -0.19 dB

Peak SAR (extrapolated) = 1.39 W/kg

SAR(1 g) = 0.352 W/kg; SAR(10 g) = 0.171 W/kg

Maximum value of SAR (measured) = 0.734 W/kg



0 dB = 0.734 W/kg = -1.34 dBW/kg

Test Plot 11#: Bluetooth DH5 Mode_Body Back_Middle Channel**DUT: OtoSys; Type: OtoSys IM600; Serial: 17101600121**

Communication System: GFSK; Frequency: 2441 MHz; Duty Cycle: 1:1.30

Medium parameters used: $f = 2441$ MHz; $\sigma = 1.947$ S/m; $\epsilon_r = 51.781$; $\rho = 1000$ kg/m³

Phantom section: Flat Section

DASY5 Configuration:

- Probe: EX3DV4 - SN3619; ConvF(6.73, 6.73, 6.73); Calibrated: 2017/9/25;
- Sensor-Surface: 1.4mm (Mechanical Surface Detection)
- Electronics: DAE4 Sn1459; Calibrated: 2017/9/15
- Phantom: SAM (30deg probe tilt) with CRP v5.0_20150321; Type: QD000P40CD; Serial: TP:1874
- Measurement SW: DASY52, Version 52.8 (8);

Area Scan (81x121x1): Interpolated grid: dx=1.200 mm, dy=1.200 mm

Maximum value of SAR (interpolated) = 0.333 W/kg

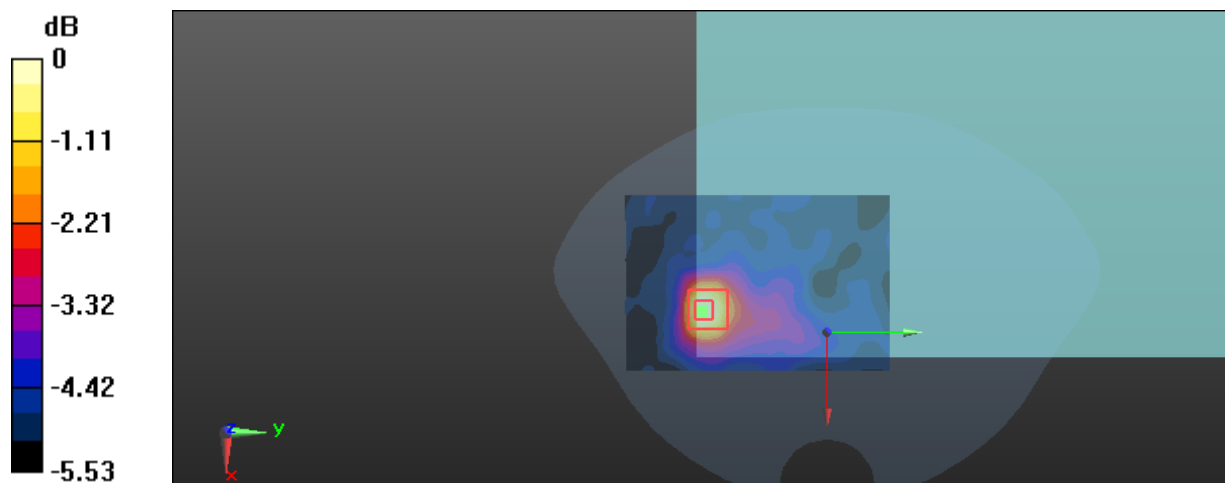
Zoom Scan (5x5x7)/Cube 0: Measurement grid: dx=8mm, dy=8mm, dz=5mm

Reference Value = 7.008 V/m; Power Drift = 0.02 dB

Peak SAR (extrapolated) = 0.383 W/kg

SAR(1 g) = 0.221 W/kg; SAR(10 g) = 0.154 W/kg

Maximum value of SAR (measured) = 0.305 W/kg



0 dB = 0.305 W/kg = -5.16 dBW/kg