

ATOM

WATER^BX

OUTER BOX SLEEVE



©2019 HeadStands. All Rights Reserved. Made in China
HeadstandsPromo.com






RoHS


CE

RoHS

RECYCLED

©2019 HandStands. All Rights Reserved. Made in China
HandstandsPromo.com

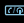

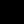

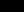


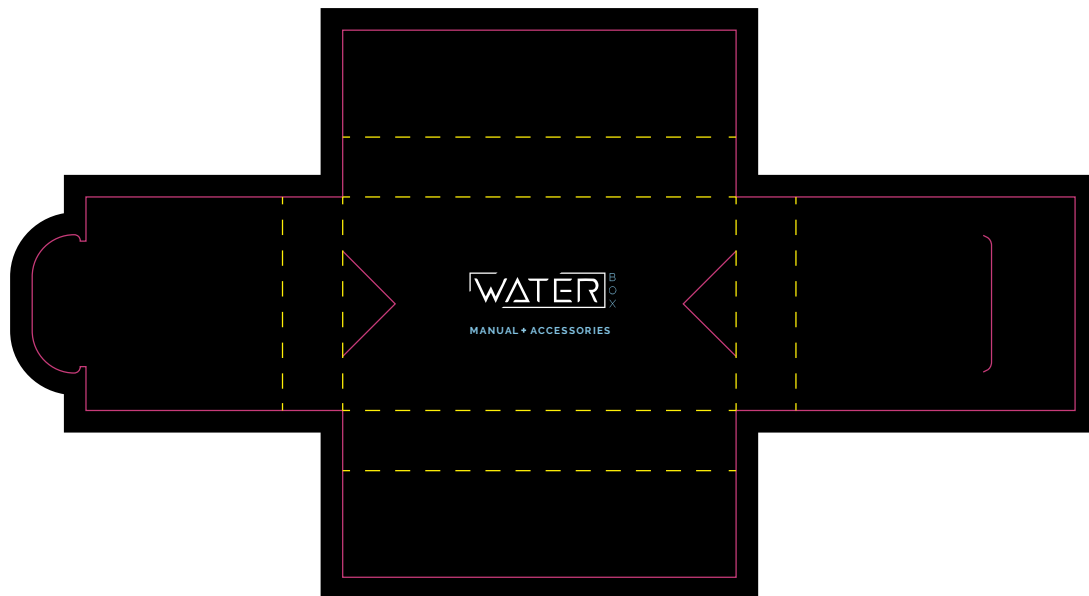
INSTRUCTION MANUAL

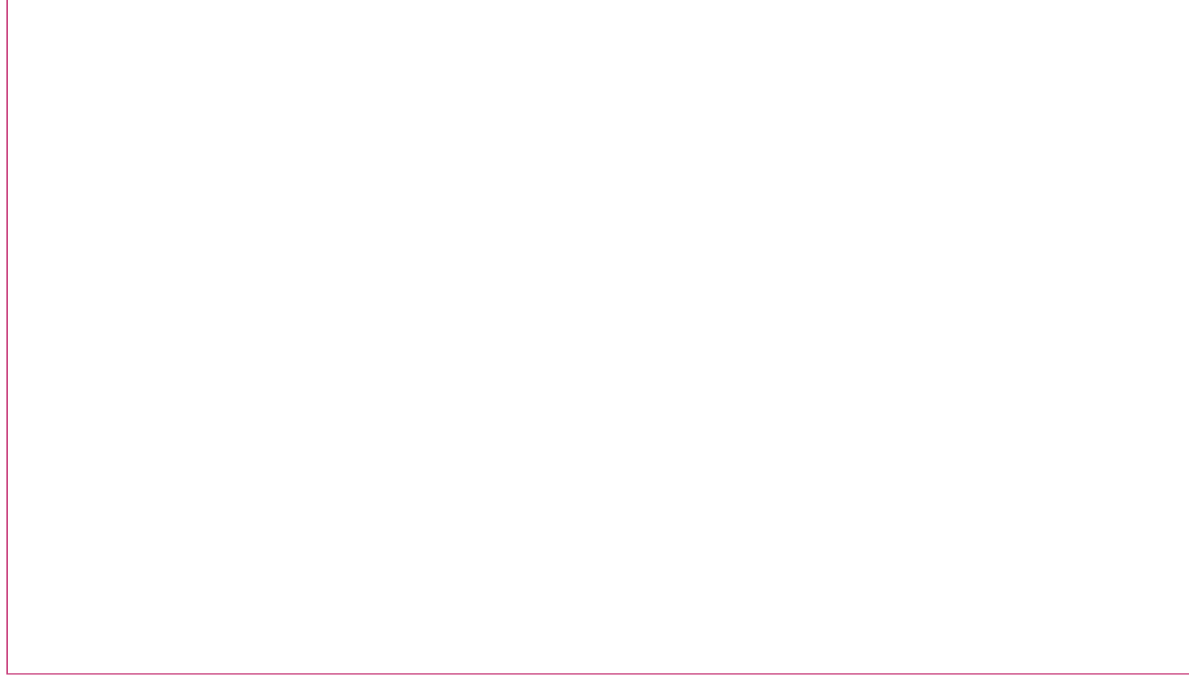
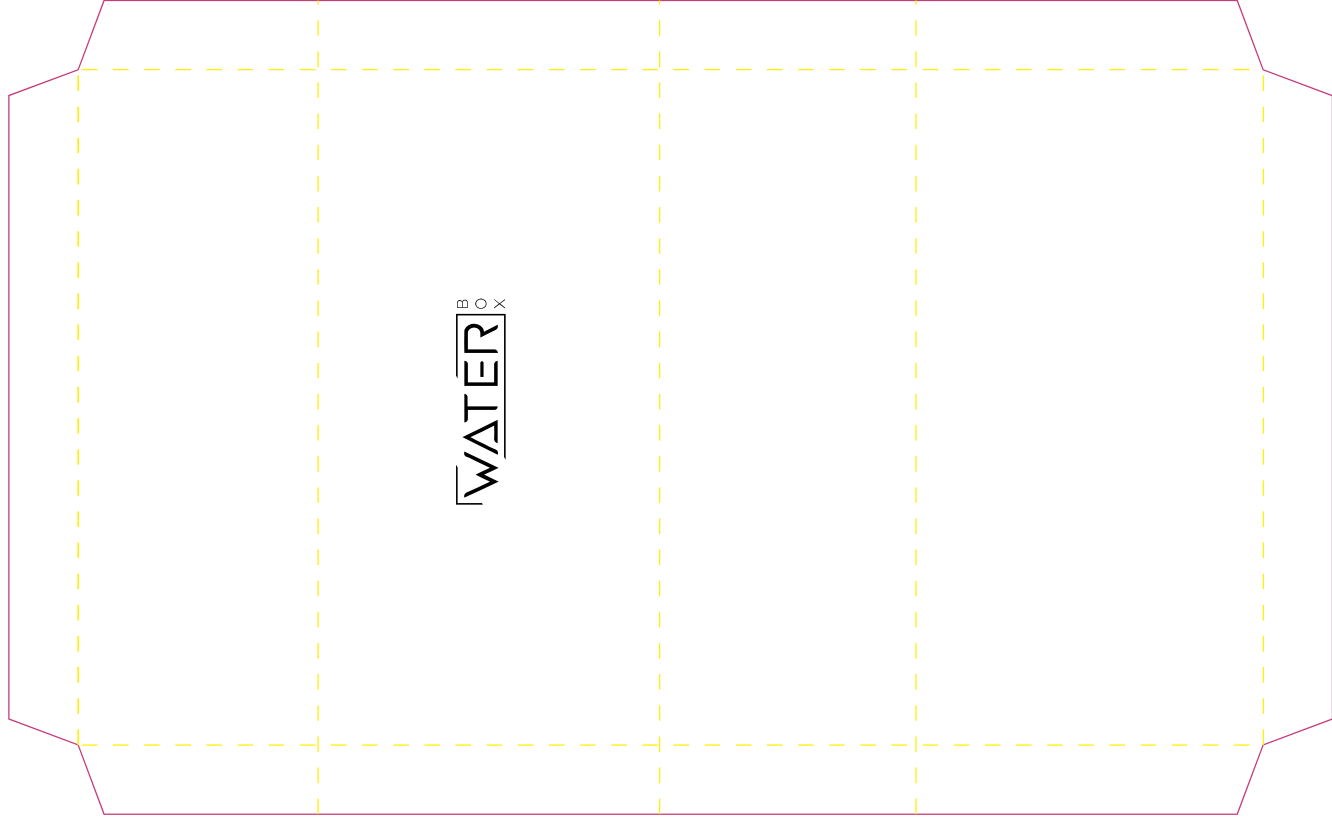
FCC Warning:
Any changes or modifications not expressly approved by the party responsible for compliance could void the user's authority to operate the equipment.

Note: This equipment has been tested and found to comply with the limits for a Class B digital device, pursuant to part 15 of the FCC Rules. These limits are designed to provide reasonable protection against harmful interference in a residential installation. This equipment operates using radio frequency energy and, if not installed and used in accordance with the instructions, may cause harmful interference to radio communications. However, there is no guarantee that interference will not occur in a particular installation. If this equipment does cause harmful interference to you or someone else, you may be required to take the following measures:
- Reorient or relocate the receiving antenna.
- Increase the separation between the equipment and receiver.
- Connect the equipment into an outlet on a circuit different from that to which the receiver is connected.
- Consult the dealer or an experienced radio/TV technician for help.

The device has been evaluated to meet general RF exposure requirements. The device can be used in portable locations under the following conditions:
1. This device complies with part 15 of the FCC rules operation is subject to the following two conditions:
a. This device may not cause harmful interference.
b. This device must accept and not emit interference, including interference that may cause undesired operation.

HOW TO CONNECT YOUR WATERBOX SPEAKER	KEY FUNCTIONS	SPECIFICATION	INCLUDED
<ol style="list-style-type: none"> PRESS AND HOLD THE POWER BUTTON UNTIL YOU HEAR WATER BOX IS READY TO PAIR. NEXT GO TO YOUR BLUETOOTH SETTINGS ON YOUR DEVICE AND SELECT WATER BOX ONCE PAIRED IT WILL READ CONNECTED ON YOUR DEVICE. 	<p> LONG PRESS TO POWER ON/OFF SHORT PRESS TO DIAL/HANG UP PHONE DOUBLE PRESS TO REDIAL THE LAST PHONE NUMBER.</p> <p> SHORT PRESS TO SWITCH MODE;</p> <p> IN MP3/FM/BT MODE, SHORT PRESS TO PLAY/PAUSE, IN FM MODE, LONGPRESS TO AUTO BAND.</p> <p> SHORT PRESS TO SWITCH MODE;</p> <p> SHORT PRESS TO PREVIOUS, LONG PRESS TO DECREASE VOLUME</p>	<p>Model number: XV-B51936 Output: 5w Input: 5V/1A Input Sensitivity: ±400mv Signal to noise ratio: >50db/-/-3db Distortion: <±0.5% Battery: 3.7V 1200mAh Charge time: 3-4 hours Playtime: 6-8 hours</p>	<ol style="list-style-type: none"> Waterproof speaker Braded cord micro USB cable Manual





ATOM

SILK SCREEN

WATER^B_O^X

WATERPROOF WIRELESS SPEAKER

Model number: XV-BS1936 FCC ID: 2AMZYWATERBOX
Input: DC 5V/1A Output: 5W Batch#:19333

1.This device complies with part 15 of theFCC rules. Operation is subject to the following two conditions:

2. This device must accept and interference, including interference that may cause undesired operation.

RoHS



FC

CE

