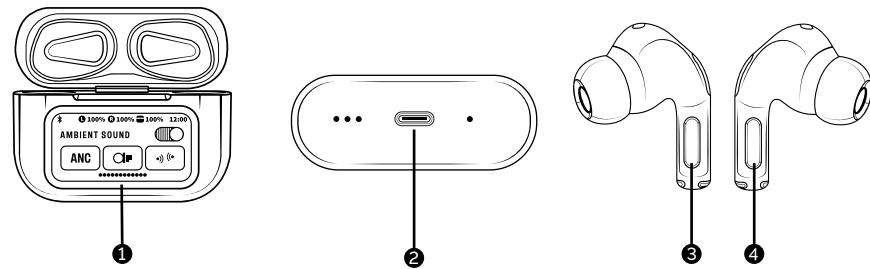


# ShowOff - Wireless Earbuds with LCD Display

## Instruction Manual

2025 Fourty Four Group, LLC, d/b/a Origaudio  
HPG Brands  
1770 S 5350 W STE 100 Salt Lake City, UT 84104 USA  
(801) 727 - 1400  
www.hpgbrands.com/origaudio

*Origaudio*



### Product Overview:

1. LCD Display
2. USB-C Input port
3. Left Earbud Touch Button
4. Right Earbud Touch Button

### Specs:

Battery Capacity: 35mAh\*2 & 250 mAh  
USB-C Input 5V/1A  
Total Play Time: Approx. 4H  
Material: ABS

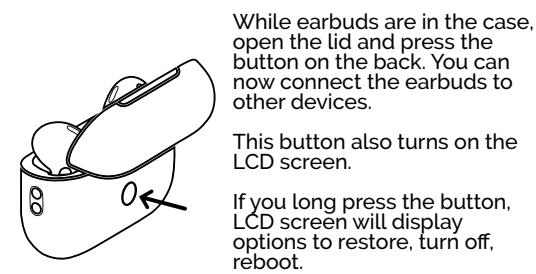
### Operating Instructions:

- **Power On:** Remove the earbuds from the charging case, this will automatically turn on the earbuds. If there is no wireless connection between the earbuds and your listening device within 5 minutes, the earbuds will automatically shut off.
- **Power Off:** Place the earbuds back in the charging case.
- **Pairing:** To pair the ShowOff earbuds with your listening device, open the earbud case, then select "ShowOff" from your listening devices list of available pairing devices. Once successfully connected, the earbuds will automatically connect to your listening device for future use.
- **Play/Pause:** When playing music, press the earbud touch button once on the left or right earbud.
- **Incoming Call Function:** Single press the touch button of the left or right earbud to answer the call. Single press the touch button to hang up.
- **Next Track:** Double press either earbud touch button.
- **Previous Track:** Triple press either earbud touch button.
- **Volume Up:** Swipe up on either earbud touch button.
- **Volume Down:** Swipe down on either earbud touch button.
- **ANC Mode and Transparency mode:** Press and hold either earbud touch button to switch from normal mode to ANC mode. Press and hold the touch button again to switch to transparency mode. Press and hold again to go back to normal listening mode.

### Charging:

- **Charging the Earbuds:** Place the earbuds in the corresponding slots of the charging case.
- **Charging the Case:** Connect the included charging cable with the USB-C end to the port (2) on the bottom of the charging case and the USB-A end to an appropriate power source.

### Function Button on the Back of the Case

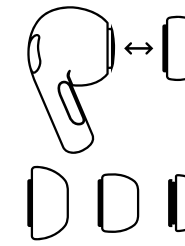


While earbuds are in the case, open the lid and press the button on the back. You can now connect the earbuds to other devices.

This button also turns on the LCD screen.

If you long press the button, LCD screen will display options to restore, turn off, reboot.

### Changing Earbud Tips



Pull firmly on the rubber earbud tip to remove.

To attach a tip, align it, then push until it clicks into place.

For additional tip sizes please see included tips in the accessory box.

### Important Safety Instructions:

- Do not drop, apply excessive force, or puncture the charging case or earbuds.
- Do not attempt to repair, disassemble, or modify any component of this product in any way.
- Keep the earbuds and case away from any extreme temperature or humidity.
- Charge this product only with the charging cable provided.
- To avoid hearing damage, do not listen at high volume levels for long periods.
- Keep case, earbuds, and charging cable away from small children.
- Use of earbuds while operating a vehicle is not recommended. Check and obey all applicable laws and regulations on the use of earphones while operating a vehicle.

### FCC Compliance:

This device complies with part 15 of the FCC Rules. Operation is subject to the following two conditions: (1) This device may not cause harmful interference, and (2) this device must accept any interference received, including interference that may cause undesired operation.

FCC Caution: Any changes or modifications not expressly approved by the party responsible for compliance could void the user's authority to operate the equipment.

NOTE: This equipment has been tested and found to comply with the limits for a Class B digital device, pursuant to part 15 of the FCC Rules. These limits are designed to provide reasonable protection against harmful interference in a residential installation. This equipment generates, uses and can radiate radio frequency energy and, if not installed and used in accordance with the instructions, may cause harmful interference to radio communications. However, there is no guarantee that interference will not occur in a particular installation. If this equipment does cause harmful interference to radio or television reception, which can be determined by turning the equipment off and on, the user is encouraged to try to correct the interference by one or more of the following measures:

- Reorient or relocate the receiving antenna.
  - Increase the separation between the equipment and receiver.
  - Connect the equipment into an outlet on a circuit different from that to which the receiver is connected.
  - Consult the dealer or an experienced radio/TV technician for help.
- Item#: 98440