

ALPINE GRIFFON-03

AG-03 USER MANUAL

Thanks for your recognition. Please read the manual carefully before first use

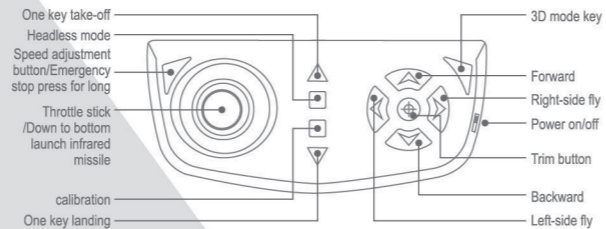
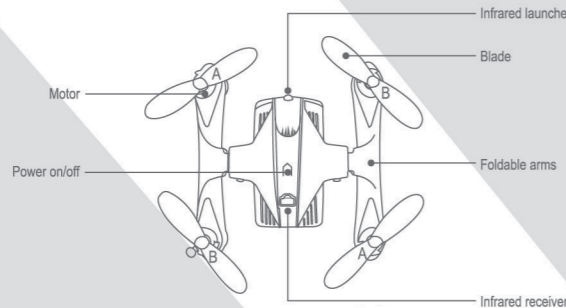
IMPORTANT NOTES:

1. Our products use gyroscopes. It can fly in small space or outdoor. On the outside, it can meet your desire for flying when the wind grade is no more than 3.
2. This product uses 2.4Ghz which have long-distance control and can be operated by several people at the same time. It can fly forward, backward, left and right sideward fly, turn left and right. Besides, it can make 3D rolling and flip.
3. In order to operate the aircraft more easily, please read the manual carefully before using. Keep the instructions for use for later reference.

SAFETY NOTES:

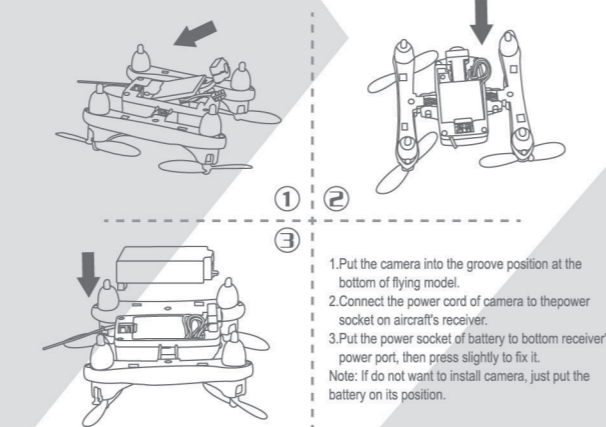
1. Please put the smaller parts of aircraft at place where children can't touch, avoid accidents.
2. The aircraft is with full power, you should push up the left acceleration lever slowly at first flight. Avoid aircraft flies rapidly and result in collisions and damage.
3. After flight, turn off the remote control and the aircraft.
4. Do not put the battery under high temperature or hot place (such as: near the fire or electricheating device)
5. During flight, the aircraft should keep away from the user or others about 2-3 meters to avoid hitting others when landing.
6. Note for adult supervisors: Check if the drone is assembled as instructed. The assembly and control shall be performed under the supervision of an adult.
7. Non rechargeable batteries are not rechargeable, install batteries with correct polarity and don't mix different types of batteries
8. Remember to turn off the power of transmitter and remove the batteries of aircraft and transmitter out when not using.
9. The power supply terminal can not be short circuit.
10. Don't look the light directly because it has radiation.

INTRODUCTION TO AIRCRAFT AND REMOTE CONTROL:

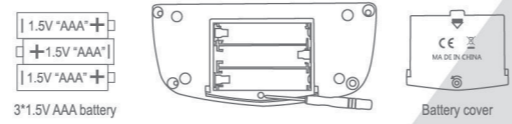


When press the trim button, one sounds "D" means it enters the trim mode. At this time, the buttons of forward/backward/left-side fly/right-side fly turn into trim functions of forward/backward/left-side fly/right-side fly. When finish trimming, press the trim button again or do not operate for 2 seconds, with 2 sounds "D", it ends this trim mode. The blue light in the middle of controller shows the electricity, when light becomes darken, it means the electricity becomes less.

INSTALLATION FOR BATTERY AND CAMERA:

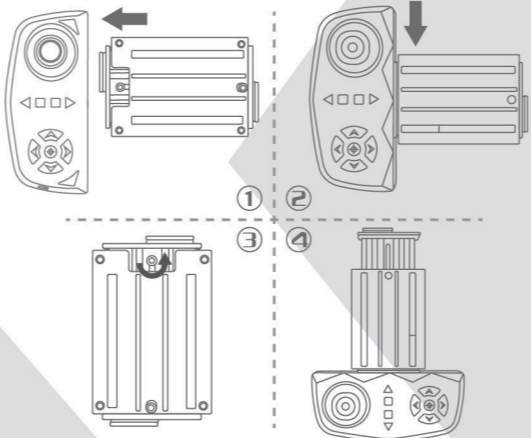


INSTALL REMOTE CONTROL BATTERY:



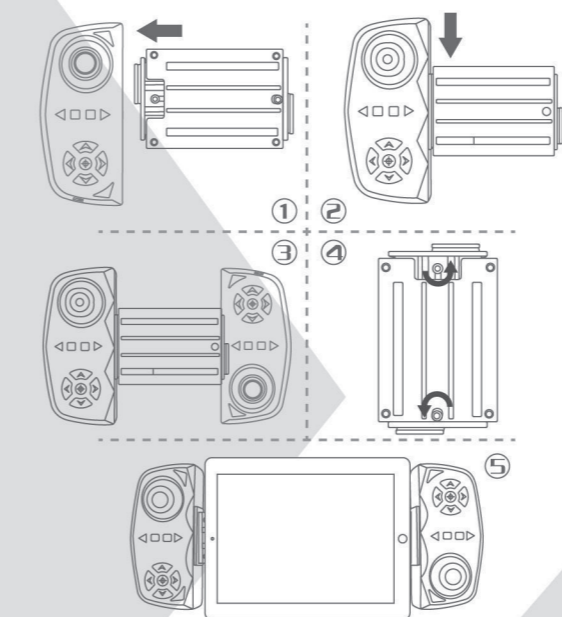
ASSEMBLED REMOTE CONTROLLER:

Mode one: Single player remote control mode



1. Put the phone holder to the top of controller.
2. Push down the phone holder to fix it on the top of controller.
3. Contra-rotate the metal accessories on the back of phone holder, then the holder can extend and shrink.
4. After adjusting, clockwise rotate the metal accessories to fix it.

Mode two: Remote control 2 in 1

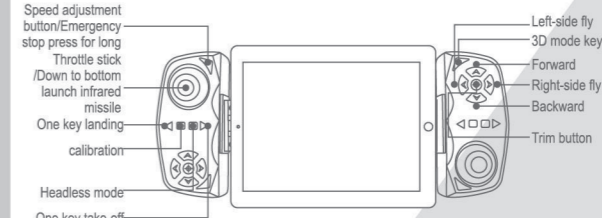


1. Put the phone holder to the top of controller.
2. Push down the phone holder to fix it on the top of controller.
3. Follow the above instructions to install the next controller.
4. Contra-rotate the metal accessories on the back of phone holder, then the holder can extend and shrink.
5. After adjusting to proper width, clockwise rotate the metal accessories to fix it.

Note:

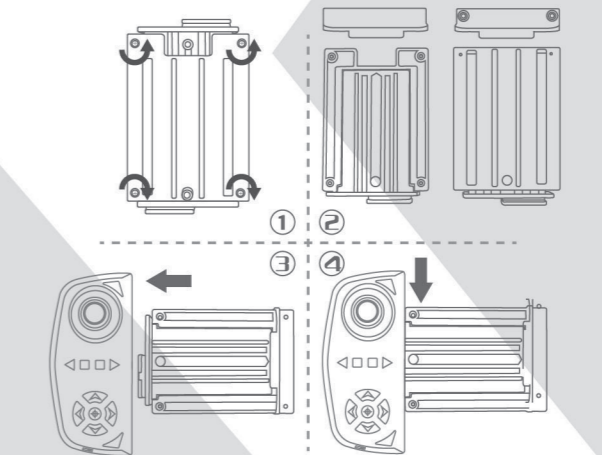
The phone holder needs to be pushed down to the end of the groove which is on the top of the controller, to touch the switch, otherwise two controllers will fail to connect. After two controllers connect, switch on the left controller first, then the right one.

Function about Connected controller:



When press the trim button, one sounds "D" means it enters the trim mode. At this time, the buttons of forward/backward/left-side fly/right-side fly turn into trim functions of forward/backward/left-side fly/right-side fly. When finish trimming, press the trim button again or do not operate for 2 seconds, with 2 sounds "D", it ends this trim mode.

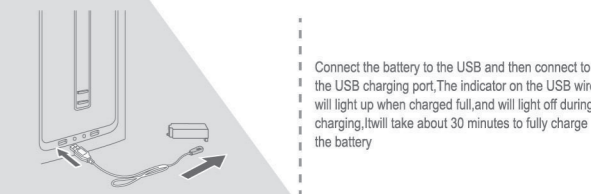
Combating remote control mode



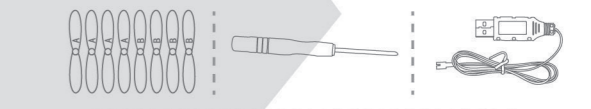
CHARGING THE DRONE:

1. Remove 4 screws from the back of phone holder.
2. Pull the accessories to the phone holder and lock the screws
3. Put the phone holder to the top of controller.
4. Push down the phone holder to fix it on the top of controller.

Note: After install two controllers, two flying models can play separately with different frequency to combat.

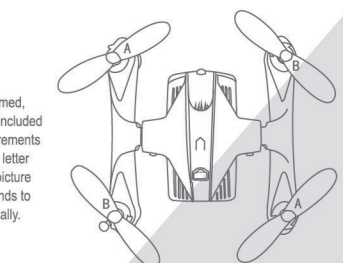


PACKAGE:



BLADES INSTALLATION:

When the aircraft blade is damaged or deformed, consumers can replace the blades from the included accessories pack. Please note there're requirements for the blades' positions when installing. The letter marked on the blades must be mounted as picture shown: "A" corresponds to "A", "B" corresponds to "B", otherwise the aircraft can't take off normally.



PREPARATION FOR TAKE-OFF:

1. Unfold the flying model's arms.
2. Swift on the power button of controller.
3. Swift on the power button of the flying model.
4. Put the flying model on leveled place, when the indication lights of the flying mode from quickly flash to slowly, it means enter frequency adjustment. When the lights keep on, it means the frequency adjustment is completed.
5. Push the acceleration lever to the highest, when the blades start to rotating slowly, it means it is unlock, and it's ready for taking off.

Note: The flying model can't fly lower than 1 meter height, otherwise the air pressure will influence the flying state.

COMBAT MODE:

When two models' distance is less than 1 meter, they can launch infrared to attack each other. Once be attacked, it will shake strongly, when the life value use up, it will fall slowly down to the ground. If rolling it can avoid the opponent's attack.

STUCK-PROTECTION FUNCTION:

When the aircraft collision occurs, the aircraft may automatically start the stuck-protection function. To push the throttle to the lowest point at this time until the aircraft indicator light flash slowly and then push the throttle to the highest point to unlock the aircraft, then can re-manipulate.

WIFI FPV INSTRUCTION :

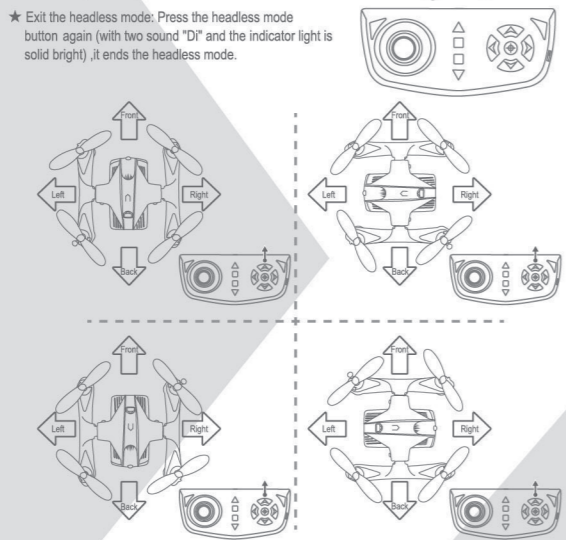


The beginners are suggested to play within the range of 10 meters. After you are skillful, you can control at a longer distance.

1. According to your mobile phone systems, scanning QR code and download the APP.
2. Enter the Settings. Searching the WiFi of aircraft, and connect it.
3. Open the APP, click on the "PLAY" to enter a control page. We can see view of video if the connection is successful.

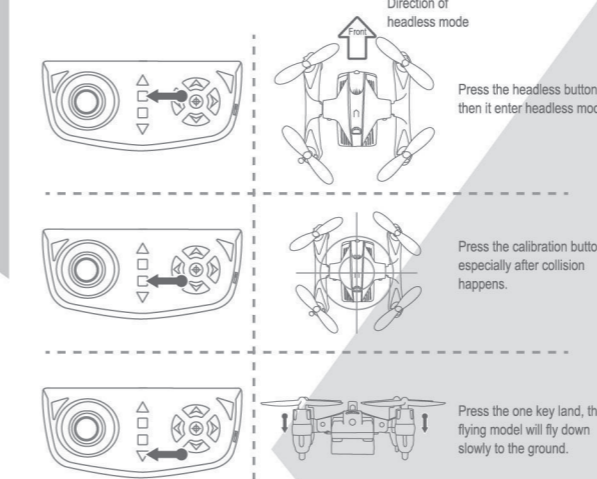
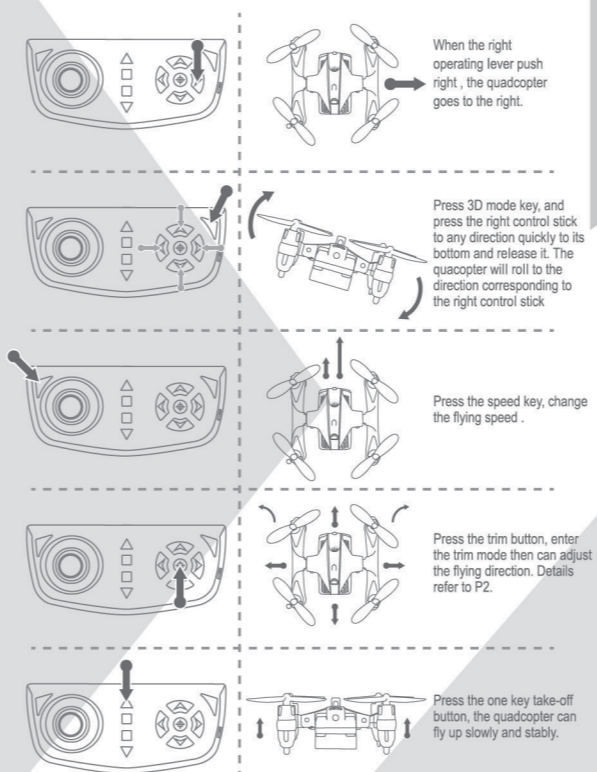
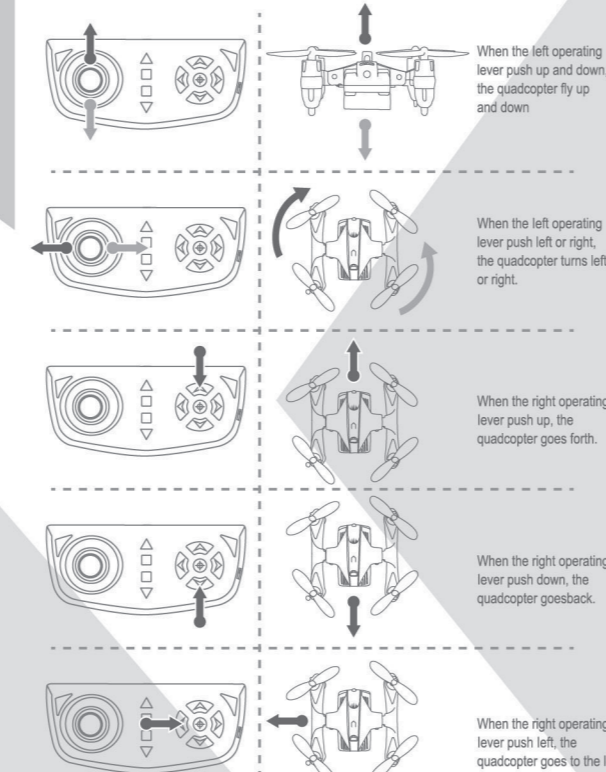
HEADLESS MODE:

- ★ **Startup and Setup:** When the power turned on and frequency matched, the front side of aircraft is regarded as the front side of headless mode. If impacted or deviated, please restart the aircraft to adjust the direction and match frequency. When pressing the headless mode button, remote control makes a sound "D" and lights on the aircraft will flash slowly. It means headless mode starts.
- ★ **Exit the headless mode:** Press the headless mode button again (with two sound "D" and the indicator light is solid bright), it ends the headless mode.



Under the headless mode, no matter which position the head of the flying model at, the position of controller will be regarded as the back of the flying model.

INSTRUCTIONS:



ATTENTION:

- Keep a safe distance from the aircraft for safety.
- Do not look straightly to the lights, as the lights may generate laser radiation.
- When the controller power is insufficient, the remote control distance will be affected, flying height is not enough and hard to take off. If the remote control power indicator light is lower than two cells, it is suggested to replace the battery in time.
- When the aircraft power is low, the aircraft indicator light enters the slow-flashing state. Please let the model fly back and charge it in time to avoid the aircraft falling due to lack of electricity.
- If the aircraft is broken, please repair it in time. Do not use aircraft with damaged propellers.
- Please put out the batteries to avoid battery leakage when do not be used for a long time.
- Do not let the aircraft crash or fall directly from high, because the aircraft will be damaged and its lifetime will be shorten.
- When the aircraft is in serious collision, please check whether the two folding shafts are deformed or loosened. If so, the folding shaft should be re-calibrated before fly again. Otherwise, it will seriously affect the flight state. (Picture as below is the folding deformation state).



- When the aircraft collision occurs, the aircraft may automatically start the stuck-protection function. To push the throttle to the lowest point at this time until the aircraft indicator light flash slowly and then push the throttle to the highest point to unlock the aircraft, then can re-manipulate.

SPECIAL NOTE: Push the throttle lever slowly. You can use the trim button to correct if the aircraft spinning or deviating in the sky

Note: The aircraft will have a reaction of Ground effect. The aircraft fly up below 30cm height from the ground, it may become unstable as its blades swirl, this is "Ground effect". The Ground effect becomes bigger if the weight of aircraft is lower.

NOTES OF USING THE LI-PO BATTERY:

- The use of lithium-ion batteries has certain risk. It may cause personal injury or property damage. The user should bear all the responsibility. The manufacturers and dealers can't control batteries (charge and discharge and storage, etc.). Also can't be responsible for any personal and property losses.
- If the battery leakage, please avoid liquid from touching skin and eyes. If touched the skin, please wash immediately with soap and water. If touched eyes, please immediately flush with plenty of cold water and seek immediate medical attention.
- If the charger appears suspicious odor, noise, or smoke, please pull out the power supply immediately.
- Please strictly comply with the following requirements, otherwise it will cause fire, electric shock or explosion.

CHARGER AND CHARGE

- Use only factory supplied charger. Before cleaning the model, make sure the model is disconnected from the charger.
- Do not charge or use the swelling, leaking or damaged battery.
- Do not overcharge the battery. When the battery are fully charged, pull out the charger. After charge complete, do not recharge to avoid overheating.
- Do not charge near combustible or flammable (carpet, wood floor, solid wood furniture, etc.) or on surface of conductive objects. Should observe the battery at any time.
- Don't charge when the battery is still hot.
- The temperature of the battery should be between 0°C and 40°C.
- Pull out the charger when not charging.

RECYCLE

- Not handling the product as a daily garbage. The discarded battery should be placed in a special designated container.
- The products consist of electronic elements and batteries. With regard to discarded electrical and electronic, please handle it according to the special requirements.
- Please be familiar with the local waste treatment.

USE AND STORE

- Do not use batteries which plastic packaging was damaged.
- When the product is turned on, do not insert or remove the battery.
- Do not allow the battery to excessive physical shock.
- Do not use the expansion, leakage, breakage, or emits an odor of the battery.
- Children contact with battery is prohibited.
- Do not put battery into the fire, avoid contact with liquid, the model can't be exposed to the rain, and should not be placed in the damp place.
- Do not put battery in a microwave oven or pressure tank.
- Please do not remove the battery or cut, drill. The battery or charger can not carry heavy things. Do not knock the battery.
- Do not use solvents, alcohol, or other flammable solvents to clean the charger.
- Prevent the short circuit. Avoid direct contact with electrolytic material of the battery, electrolytic material and electrolytic steam is harmful to the body.
- Store products under greenhouse. Please do not put product in extreme temperatures. Avoid the temperature of storage has important changes.
- Please do not place the product in the heat source.
- When not using, take away the battery.

Manufacturer: SHANTOU CITY YONGMALL TECHNOLOGY INDUSTRIAL CO., LTD.
Address: 290202, Lu Xun, Choushan St., Zhoushan District, Zhoushan, Zhejiang of China.
Importer: HEBEI Trade & E. 33128 Bielefeld, Germany
Frequency Bands: 2400-2470 MHz
Maximum output power: 0.9325m

Changes or modifications not expressly approved by the party responsible for compliance could void the user's authority to operate the equipment. This equipment has been tested and found to comply with the limits for a Class B digital device, pursuant to Part 15 of the FCC Rules. These limits are designed to provide reasonable protection against harmful interference in a residential installation. This equipment generates, uses and can radiate radio frequency energy and, if not installed and used in accordance with the instructions, may cause harmful interference to radio communications. However, there is no guarantee that interference will not occur in a particular installation. If this equipment does cause harmful interference to radio or television reception, which can be determined by turning the equipment off and on, the user is encouraged to try to correct the interference by one or more of the following measures:

- Reorient or relocate the receiving antenna.
- Increase the separation between the equipment and receiver.
- Connect the equipment into an outlet on a circuit different from that to which the receiver is connected.
- Consult the dealer or an experienced radio/TV technician for help.