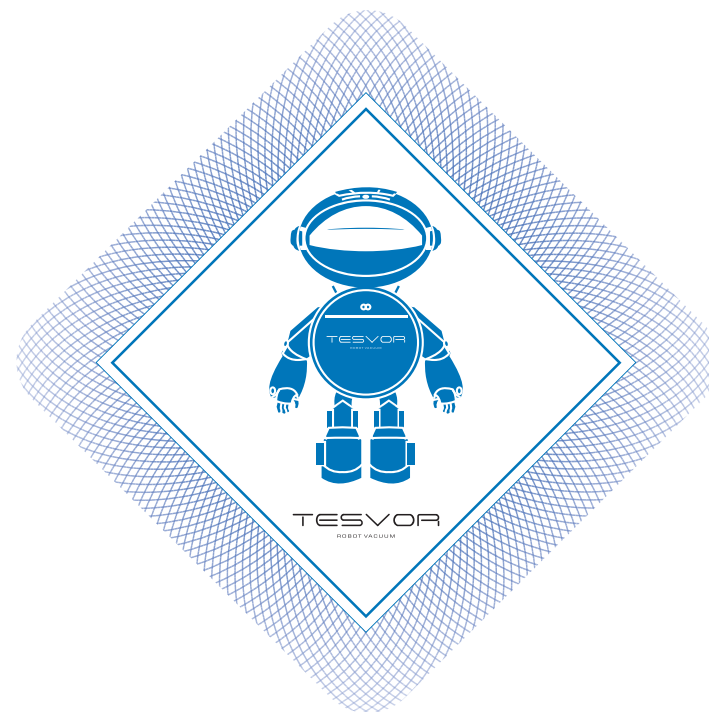


Make Life Smarter and Easier



**User Manual**

Customer Contact: [service@tesvor.com](mailto:service@tesvor.com)  
Manufacturer: Shenzhen Hua Xin Information Technology Co., Ltd.  
Address: Section A, 10/F, Block 1, No.7 Industrial Park, Yulu Community,  
Yutang, Guangming New District, Shenzhen, China

Make Life Smarter and Easier

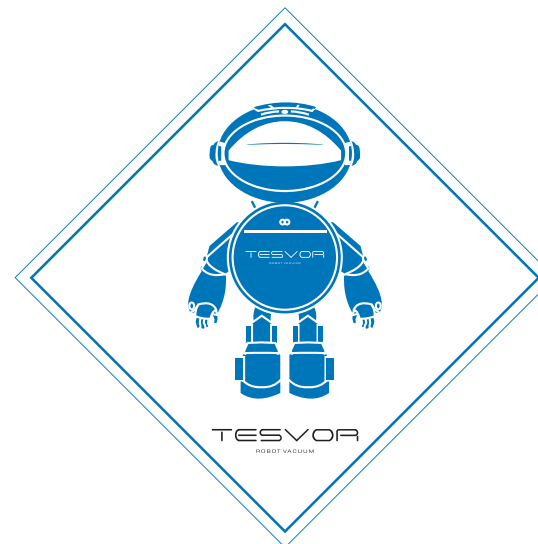
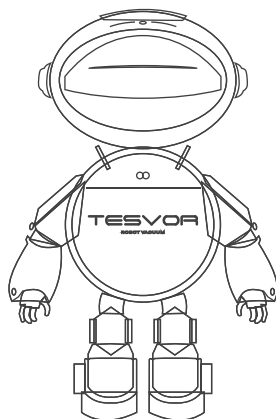
## Greetings from Tesvor!

Thank you for purchasing Tesvor smart cleaning robot.

We hope that our product will bring you a smarter and more convenient lifestyle!

If you encounter any problem not mentioned herein, please contact: [service@tesvor.com](mailto:service@tesvor.com)

For more details, please visit our official website: <http://www.tesvor.com>



# TESVOR

X500 Smart Robot Vacuum

## FCC warning:

Note: This equipment has been tested and found to comply with the limits for a Class B digital device, pursuant to part 15 of the FCC Rules. These limits are designed to provide reasonable protection against harmful interference in a residential installation. This equipment generates, uses and can radiate radio frequency energy and, if not installed and used in accordance with the instructions, may cause harmful interference to radio communications. However, there is no guarantee that interference will not occur in a particular installation. If this equipment does cause harmful interference to radio or television reception, which can be determined by turning the equipment off and on, the user is encouraged to try to correct the interference by one or more of the following measures:

- Reorient or relocate the receiving antenna.
- Increase the separation between the equipment and receiver.
- Connect the equipment into an outlet on a circuit different from that to which the receiver is connected.
- Consult the dealer or an experienced radio/TV technician for help.

Modification: Any changes or modifications not expressly approved by the grantee of this device could void the user's authority to operate the device.

## RF radiation exposure statement

The Robotic Vacuum Cleaner complies with FCC RF radiation exposure limits set forth for an uncontrolled environment. Caution: To maintain the compliance with the FCC's RF exposure guideline, install the Robotic Vacuum Cleaner at least 7.9" (20 cm) from ALL persons. The transmitter of this device must not be co-located or operating in conjunction with any other antenna or transmitter.

## 4. Instructions for Use 5. Product Maintenance 6. Common Faults

### 1. Welcome

### 2. Safety Instructions

### 3. Product Components

- 3.1 Names of Parts
- 3.2 Product Specifications
- 3.3 Product Characteristics

### 4. Instructions for Use

- 4.1 Remote Control Instructions
- 4.2 Operating Instructions

### 5. Product Maintenance

- 5.1 Side Brush Cleaning and Replacement
- 5.2 Cleaning of Dust Box and Filter
- 5.3 Maintenance of Rolling Brush Components
- 5.4 Maintenance of Other Components
- 5.5 Replaceable Modules

### 6. Common Faults

Before using this product, please read the safety instructions below and follow all the routine safety precautions.

Please read the Instructions carefully and keep them for future reference. Any operation that does not conform to the Instructions may cause damage to the product.

### Safety Considerations of Main Body and Accessories

#### ⚠ Warning

01. Do not disassemble, repair or refit the product without authorization; otherwise it may damage the product or pose a hazard.
02. Do not use the product in an environment with risk of fire or explosion.
03. This product can only use the original power adapter; otherwise the product may be damaged or catch on fire.
04. Do not stand or sit on this product; doing so could damage the product or cause it to fall over.
05. When the metal part of the power plug is dusty, please wipe it with a dry cloth.
06. The power adapter is applied to a 100-240V AC voltage. Please plug into the socket properly and keep away from children.
07. Do not wash or soak the main body and electronic accessories in water; otherwise the product may be damaged by a short circuit.
08. Do not damage, load weight on, heat, pull, or bend it.
09. During cleaning, please pay attention to the safety of toddlers and elders at home to avoid tripping, and please do not touch the wheel and side brush to avoid injury. (Please pay special attention to toddlers).
10. This product is for home use. Please do not use it outdoors.
11. Do not allow metal and conductive materials to come in contact with the battery; doing so may cause a short circuit.

#### ⚠ Attention

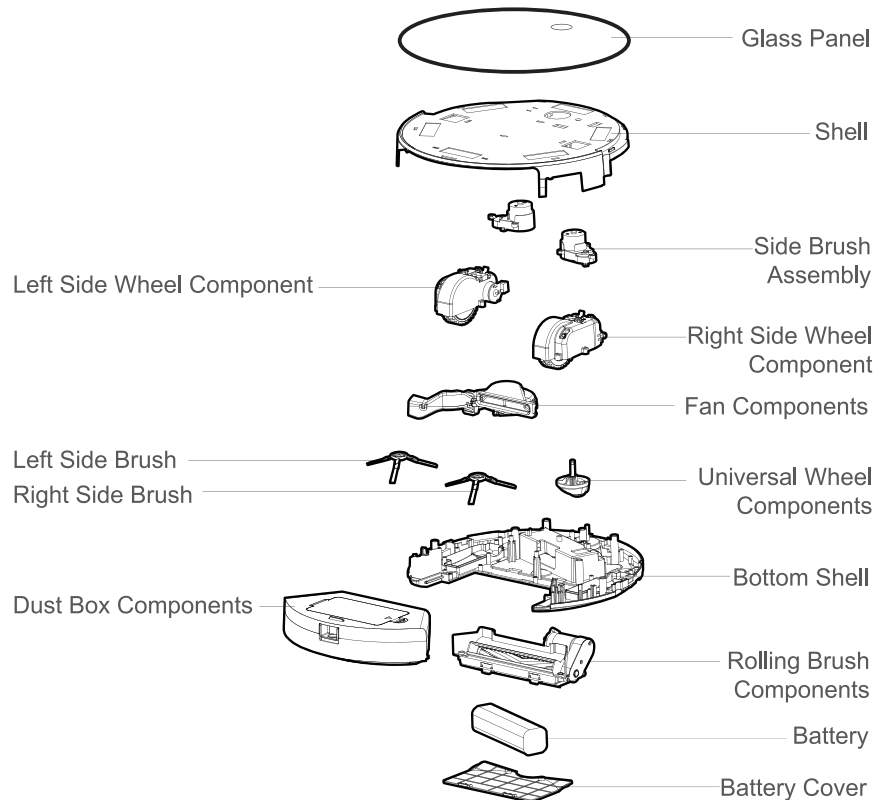
01. Do not touch the product with wet hands; doing so may cause an electric shock.
02. Please do not place the product in places where it could easily fall, such as tables, chairs, high platforms in room, etc.
03. The product has a sophisticated design and should be protected from

### 6. Common Faults

Faults	Possible Reasons	Solutions
The robot cannot be charged.	<ol style="list-style-type: none"> <li>1. The electrodes between the main body and the charging base are not contacted properly.</li> <li>2. The charging base is switched off while the robot is switched on, which leads to the loss of power.</li> </ol>	<ol style="list-style-type: none"> <li>1. Make sure that the electrodes between the main body and the charging base are properly contacted.</li> <li>2. Keep charging the robot when it is not working to better prepare for next cleaning assignment.</li> </ol>
The robot is stuck during work.	The robot may be stuck by wires/cables on the ground, hanging curtains or obstacles around the carpets.	The robot will try to get itself out automatically. However, please help it manually if it fails.
The robot goes back to recharge without finishing the cleaning work.	<ol style="list-style-type: none"> <li>1. The robot detects that the power may not be enough and automatically goes back to recharge.</li> <li>2. The robot works at different speeds on different floor types. For example, it works longer on wood floors than on carpets.</li> </ol>	<ol style="list-style-type: none"> <li>1. Charge the robot.</li> <li>2. The length of working time varies because of the complexities of room environments, the amount of garbage and different cleaning modes.</li> </ol>
The robot does not perform cleaning work automatically as scheduled.	<ol style="list-style-type: none"> <li>1. The robot is not switched on and the robot cannot perform cleaning work as scheduled when it is powered off.</li> <li>2. The power level of the robot is too low to work.</li> <li>3. The robot is stuck or twined by obstacles.</li> </ol>	<ol style="list-style-type: none"> <li>1. Turn on the robot.</li> <li>2. Keep charging the robot when it is not working to better prepare for next cleaning assignment.</li> <li>3. Turn off the robot and clean the dust box. Then turn over the robot to clean its components, such as wheels and side brushes.</li> </ol>
Remote control malfunctions. (effective range: 16.3 ft).	<ol style="list-style-type: none"> <li>1. The remote control is short of or out of power.</li> <li>2. The robot is short of or out of power.</li> <li>3. The infrared ray is blocked because the infrared emitter on the remote control or the infrared receiver on the robot is contaminated.</li> <li>4. Interference emitted by other devices that exist nearby.</li> </ol>	<ol style="list-style-type: none"> <li>1. Change the batteries and install the batteries correctly.</li> <li>2. Make sure that the robot is switched on with enough power for operation.</li> <li>3. Wipe the infrared emitter on the remote control or the infrared receiver on the robot with a clean cotton cloth.</li> <li>4. Avoid using the remote control near other infrared devices.</li> </ol>

Note: If the above methods cannot solve the problem, please reboot the robot. If the problem cannot be solved by reboot, please contact [service@tesvor.com](mailto:service@tesvor.com)

## 5.5 Replaceable Modules



### Range of application:

The product is suitable for cleaning houses, hotel rooms, and small offices and provides good cleaning for various carpets (with carpet wool length less than 0.6 inch), wooden floors, hard floors, floor tiles, etc.

long-term exposure to sunlight.

04. Please do not use the product in humid environments, such as bathrooms.
05. Please do not place the product near cigarette butts, lighters or other open fires.
06. Please clean the product after the end of charging.
07. Please turn off the power switch on the side of the robot when the product is out of service for a long time.
08. Please check carefully to see if the power adapter is connected to the socket prior to use, to avoid damage to the robot.
09. Before using the product, please remove all vulnerable items on the floor, such as glass, lamps, and items such as wires and curtains that may entangle with the side brush and suction passages.
10. When the dust box is full, please empty the garbage before using again.
11. Please do not use the robot to clean construction waste.
12. The operating temperature of the product ranges from 0 degrees Celsius to 40 degrees Celsius; please do not use it in a high temperature environment.
13. Before the product is scrapped, please remove the battery from the robot. When you remove the battery, please ensure that the product is not connected to a power supply. Please recycle the battery safely for environmental protection.

### Safety Considerations for Rechargeable Battery

#### ⚠ Danger

01. Always use a dedicated battery adapter to avoid leakage, heating or rupture.
02. Do not short-circuit the battery or remove the battery; doing so may cause leakage, heating or rupture.
03. Do not transport or preserve with necklaces, hairpins and other metal objects; doing so may lead to short circuit, resulting in leakage, heating or rupture.
04. Do not burn or heat the battery; doing so may cause leakage, heating or rupture.