


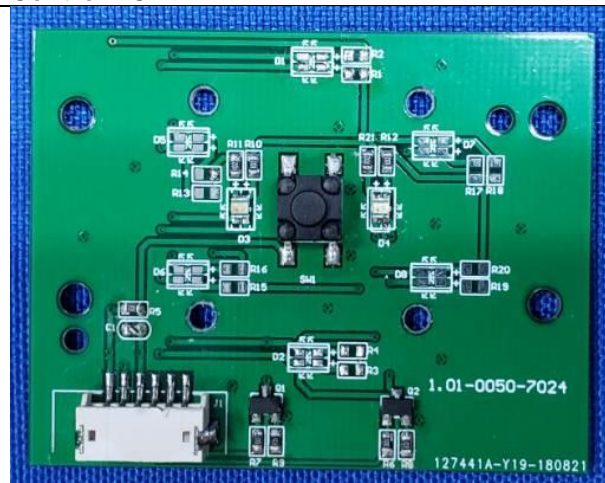
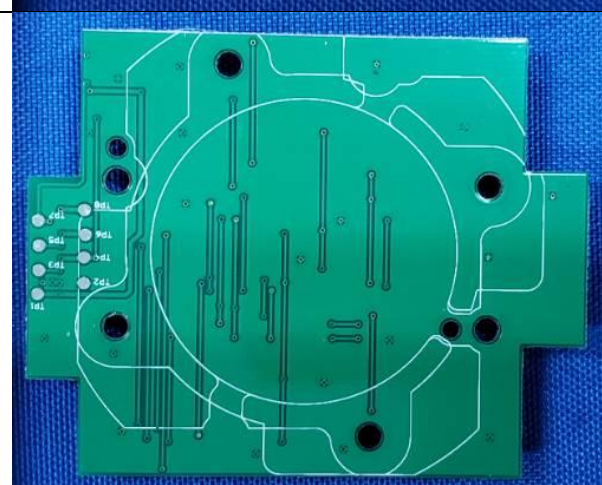
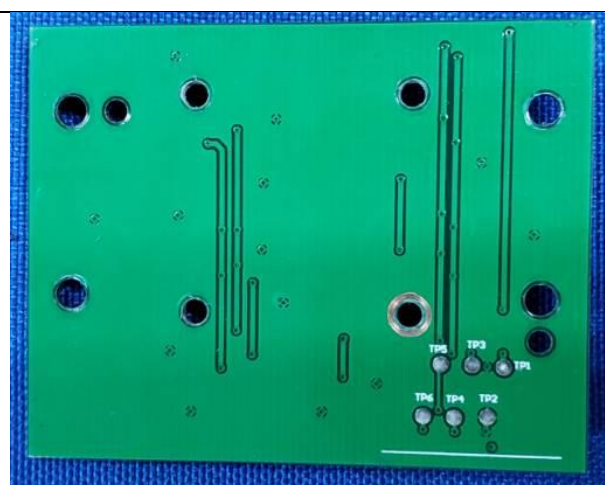
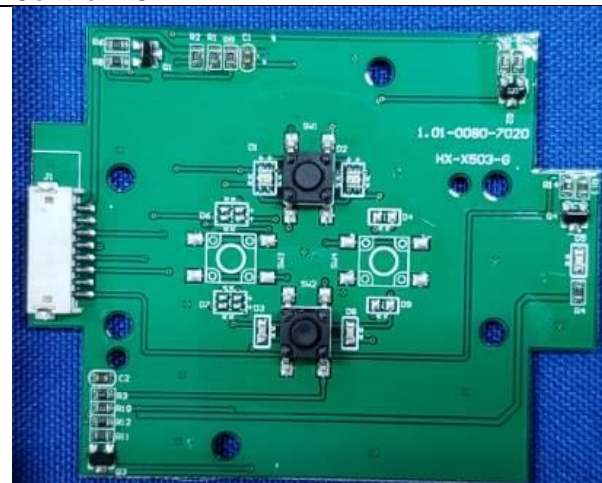


Trade mark	Model No.	Control PCB			Apperance			
		Without	A	B	1#	2#	3#	4#
TESVOR	X500; X500i; X500w; X500r; X500Pro	√			√			
	X500; X520; X530; X550; X560					√		
	Robvacuum8						√	
ZIGLINT	D5; D51; D52; D5s; D5Pro		√					√
	X-503			√				√

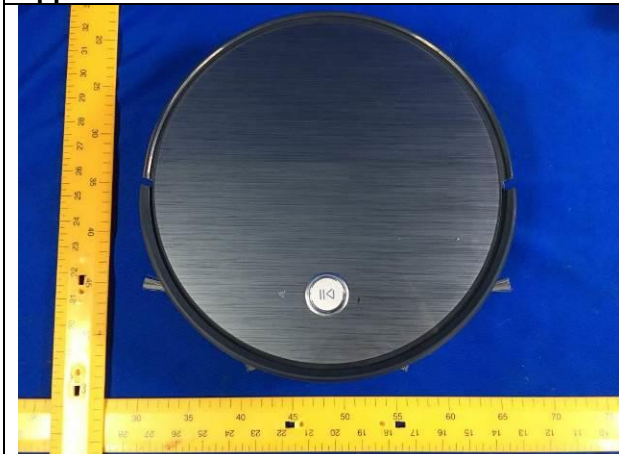
Control PCB A



Control PCB B



**Apperance 1#**



**Apperance 2#**



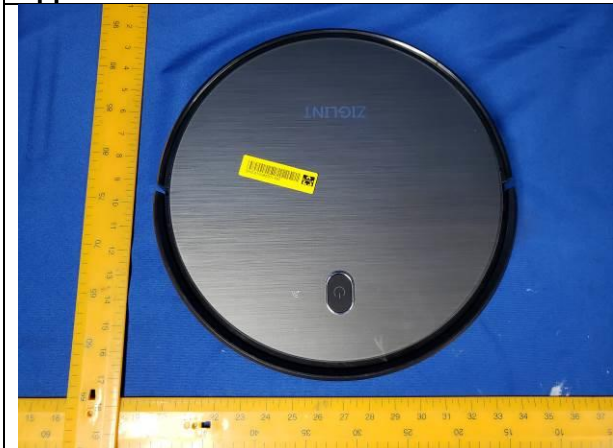
**Apperance 3#**



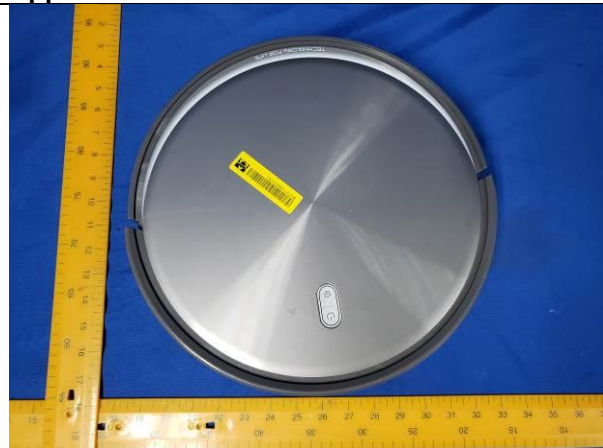
**Apperance 4#**



**Apperance 3#**

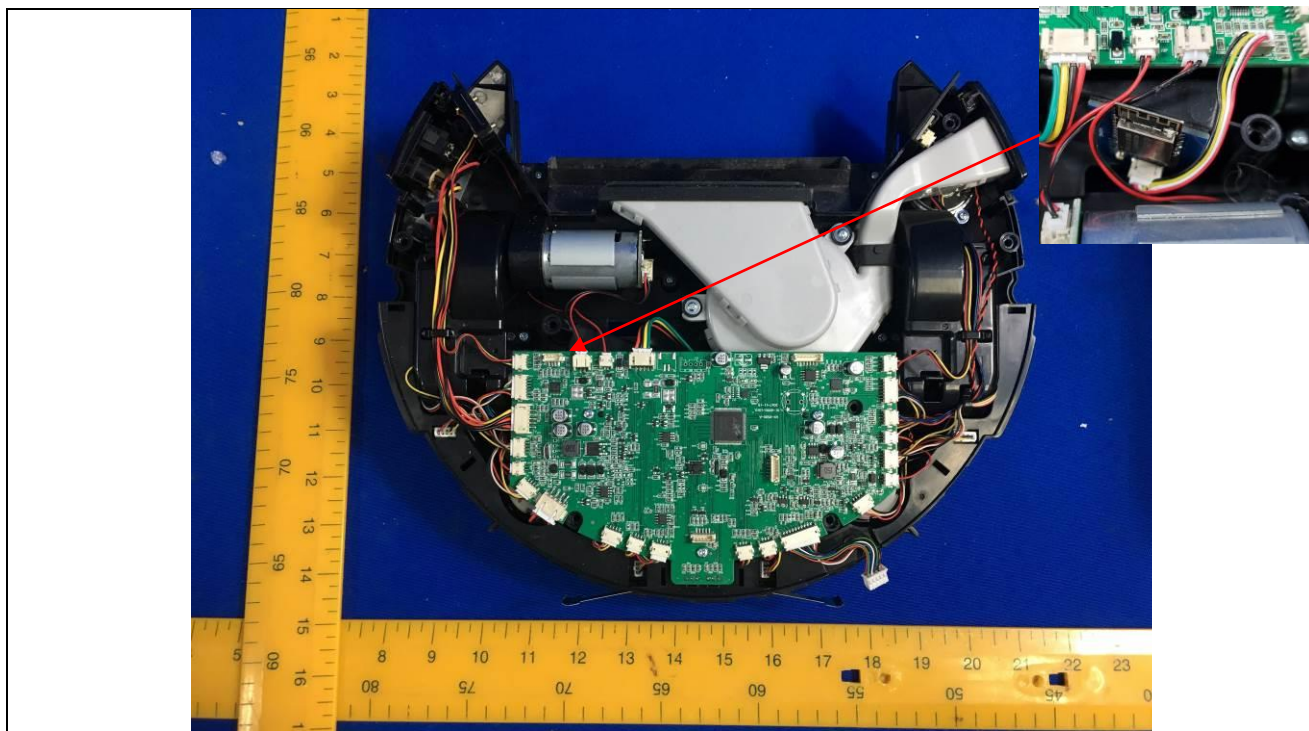


**Apperance 4#**

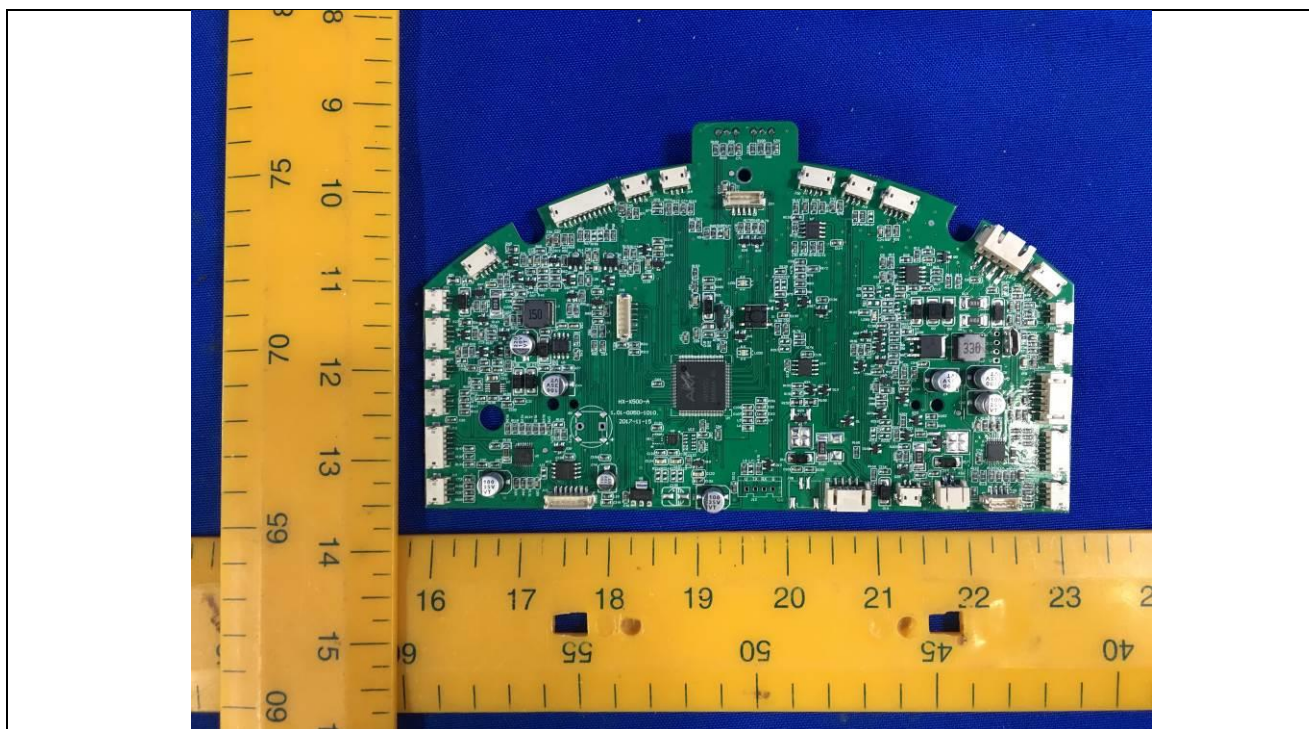




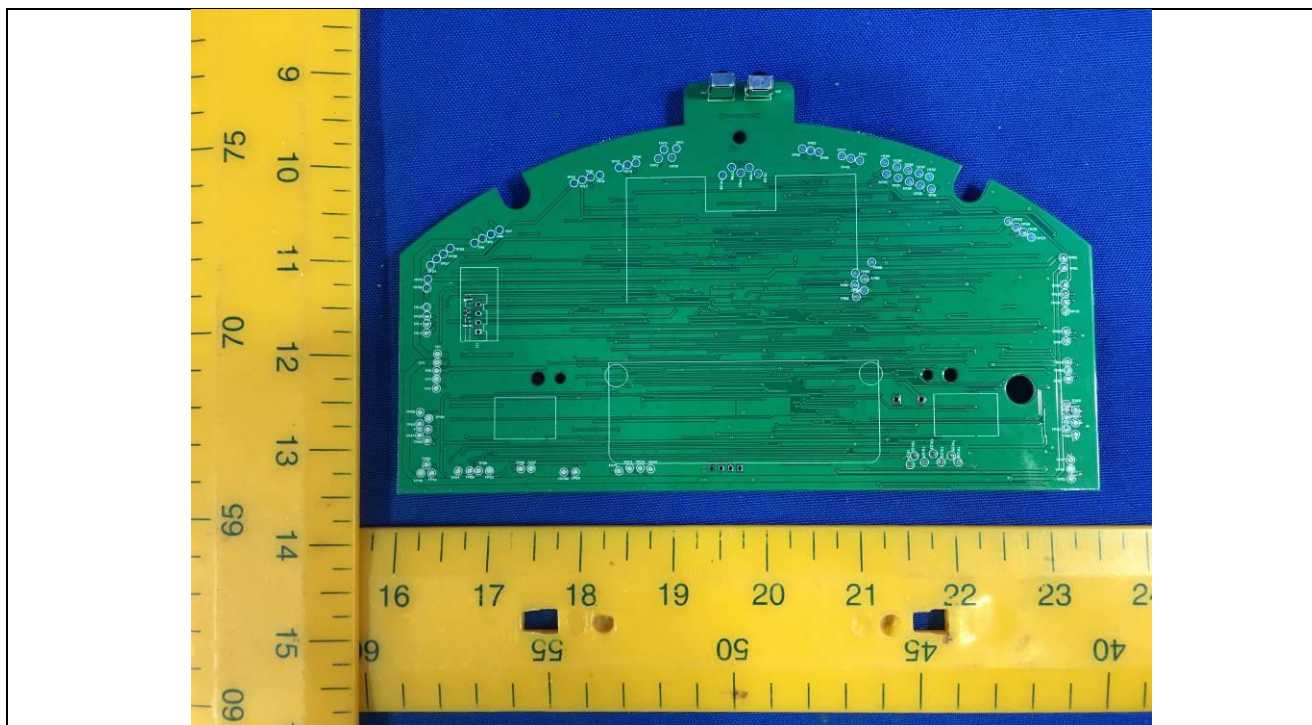
Details of: Internal view



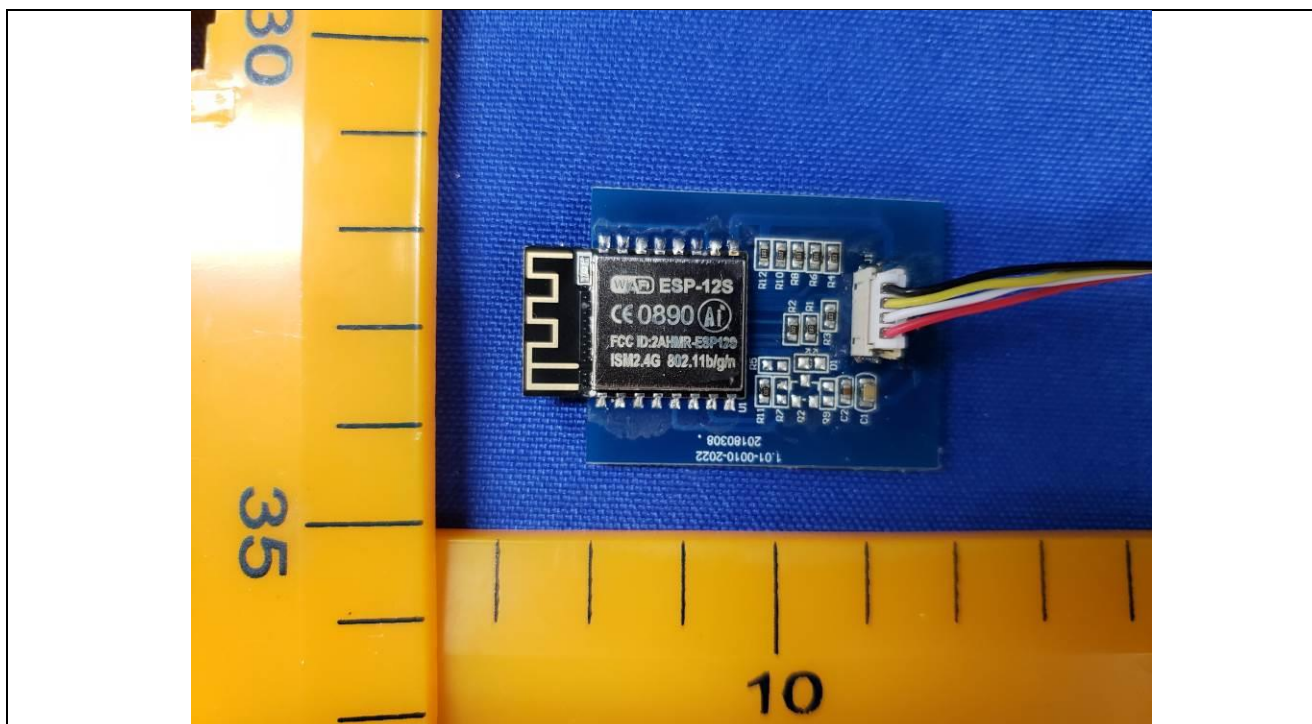
Details of: Main PCB



Details of: **Main PCB**

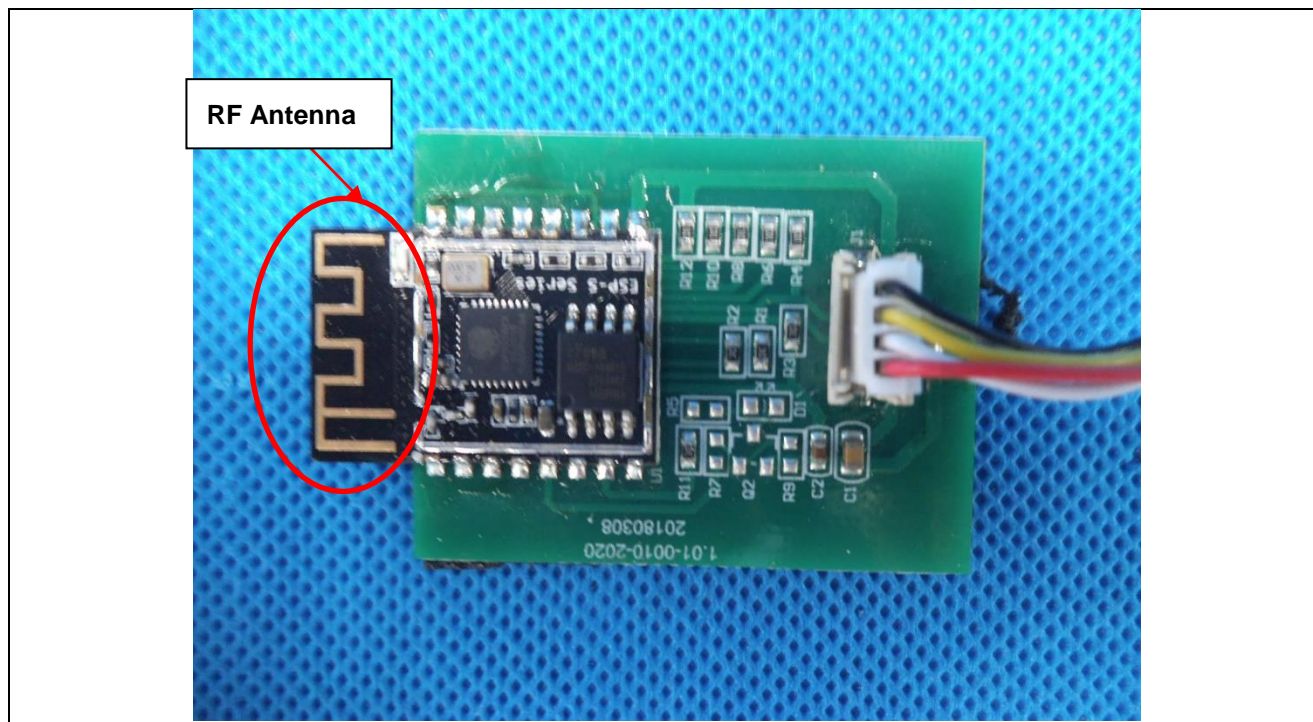


Details of: **Wi-Fi PCB**

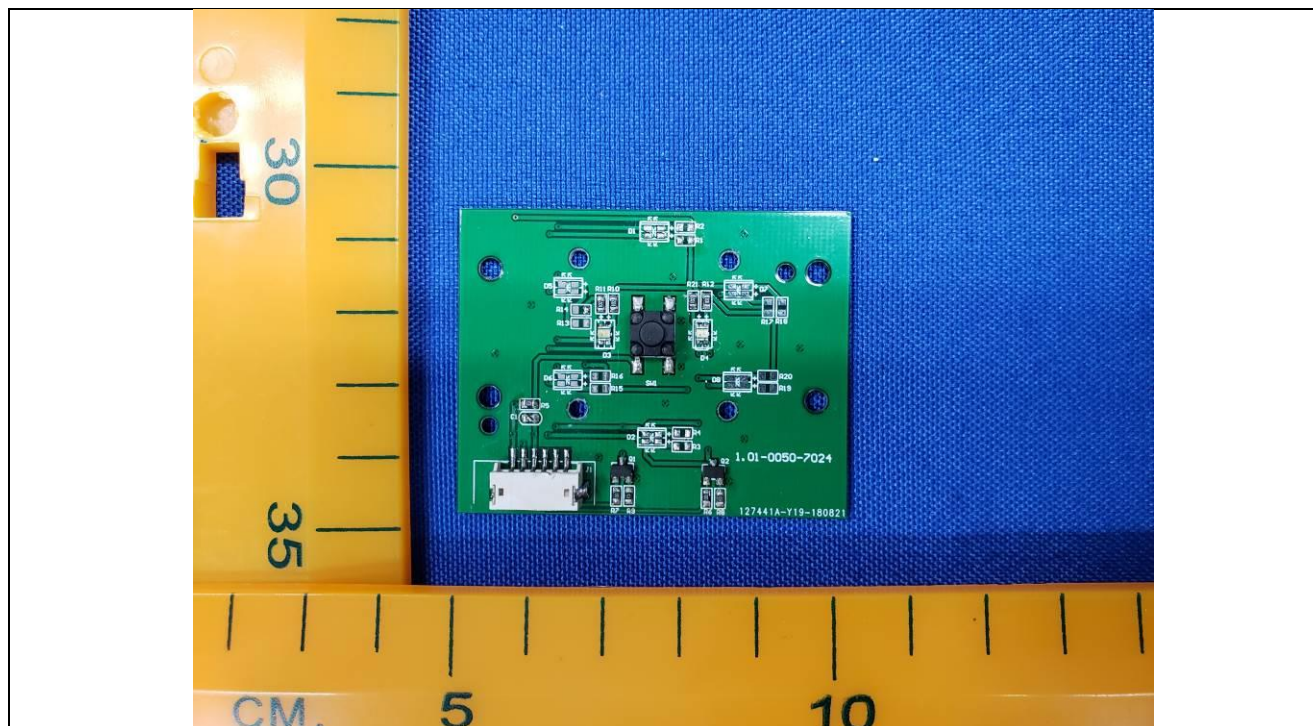




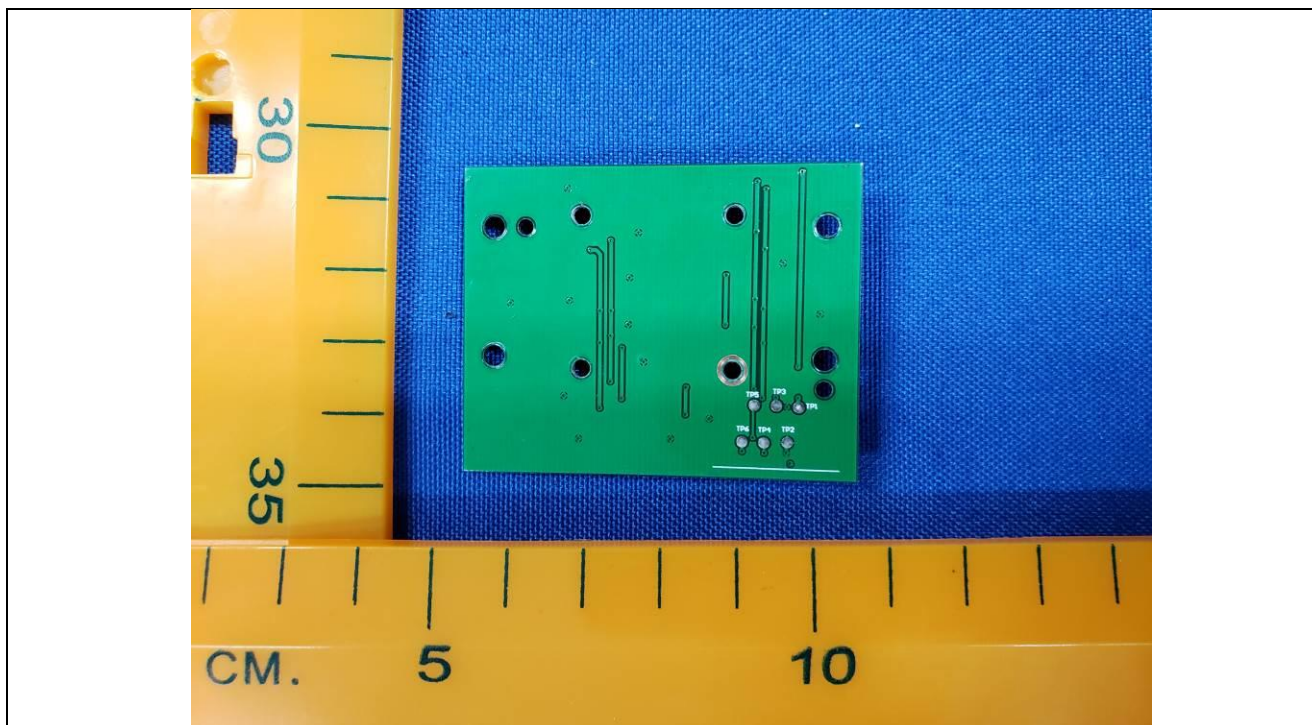
Details of: **Wi-Fi PCB**



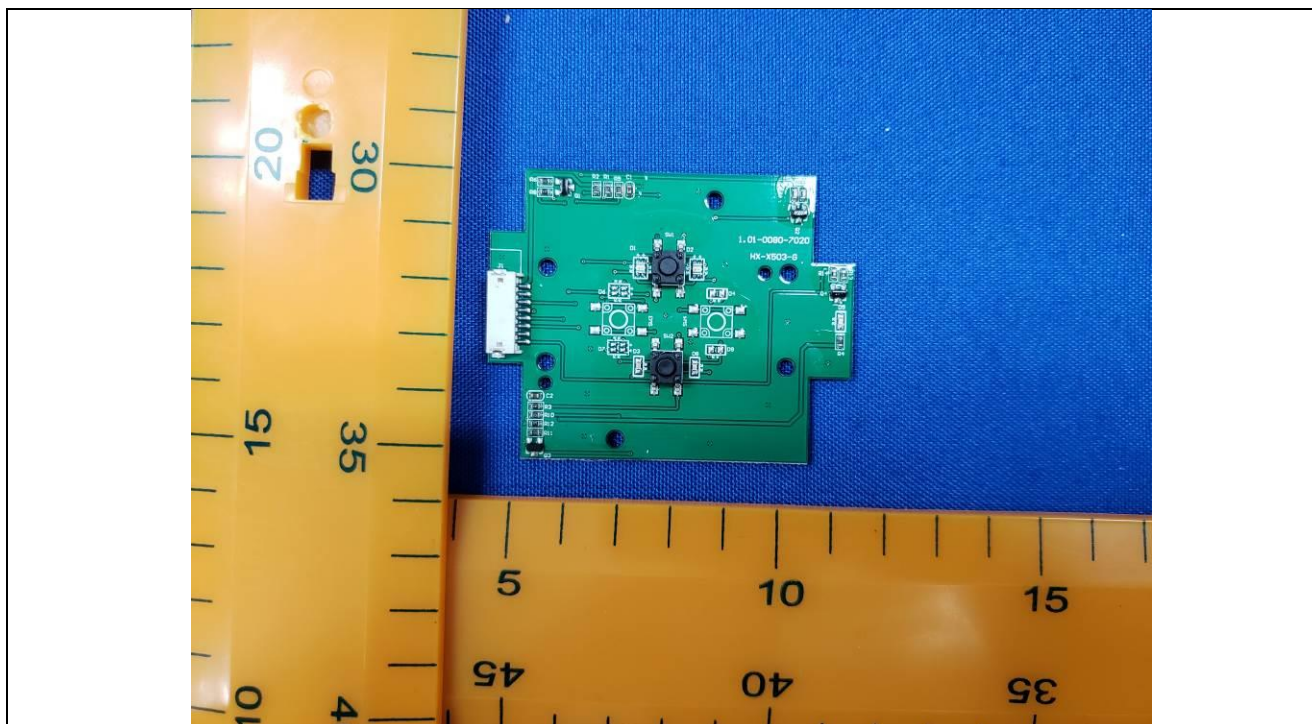
Details of: **Control PCB (For model D5; D51; D52; D5s and D5Pro)**



Details of: Control PCB (For model D5; D51; D52; D5s and D5Pro)

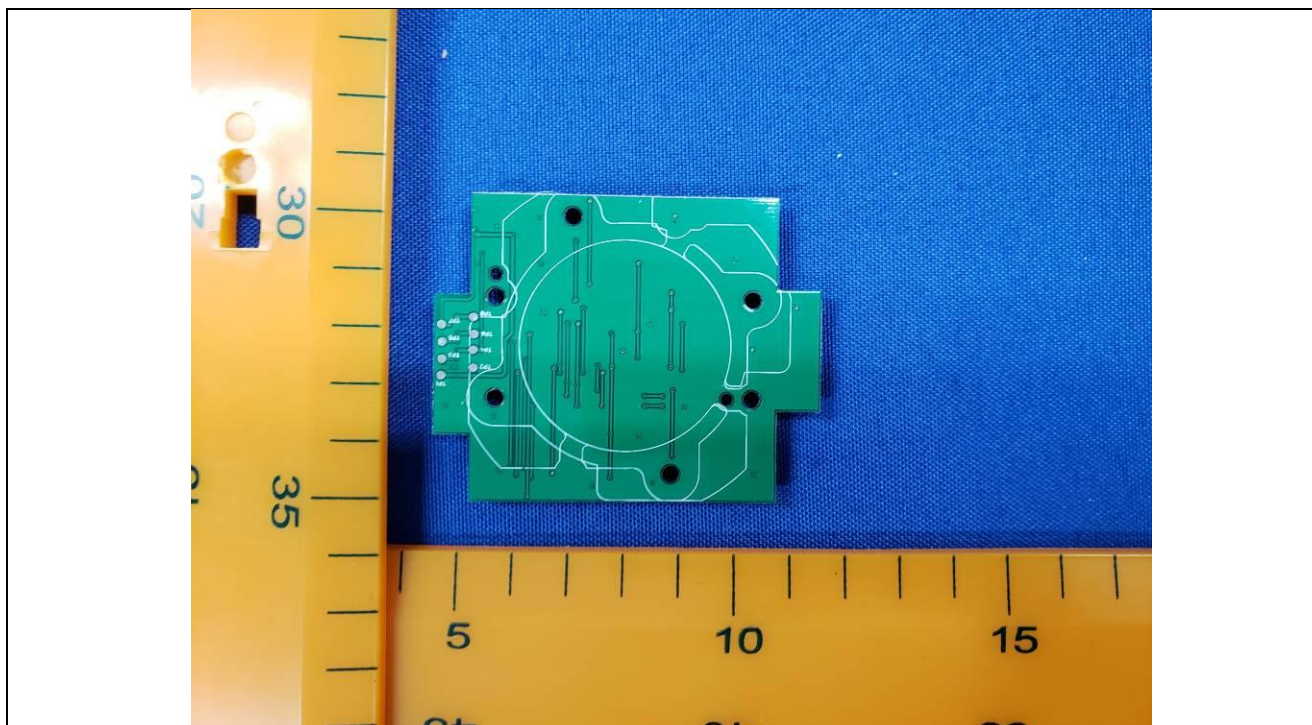


Details of: Control PCB (For model X-503)



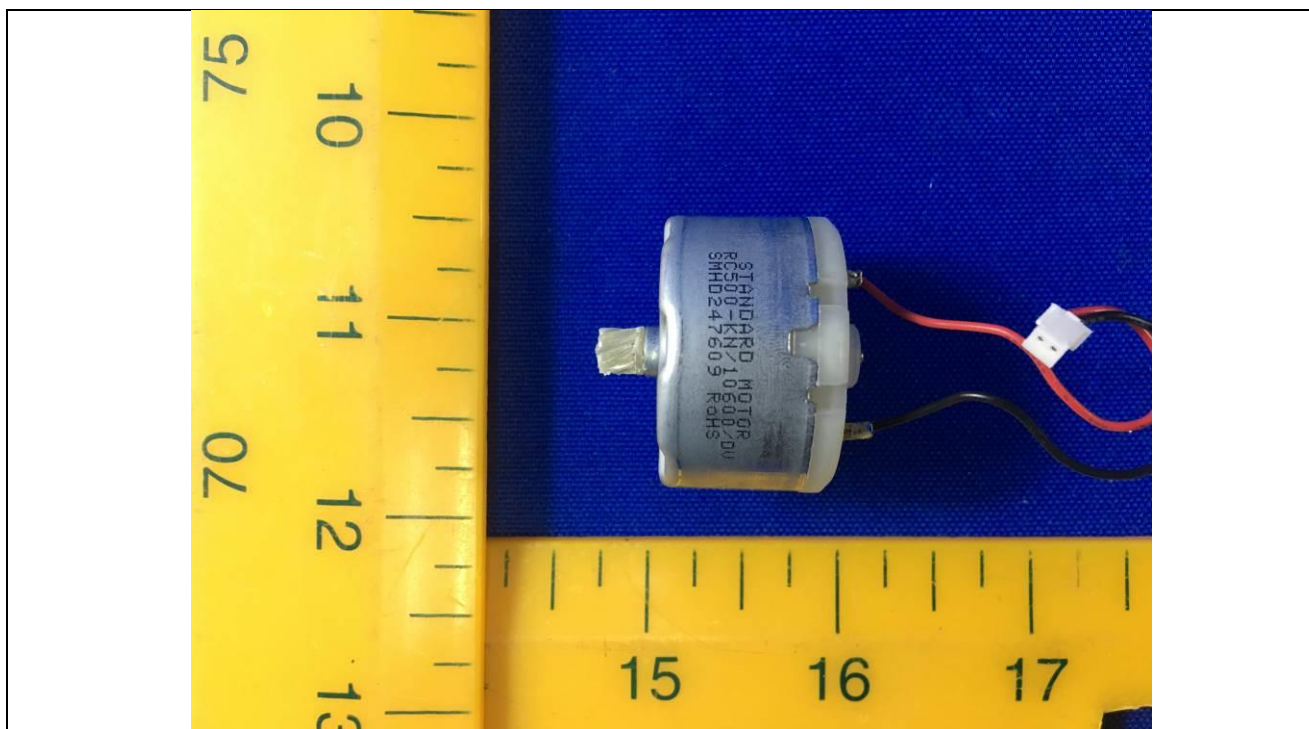


**Details of: Control PCB (For model X-503)**



**Details of: Battery (For BYD COMPANY LIMITED)**



Details of: Battery (For Yiyang Corun Battery Co., Ltd)Details of: Motor for brush



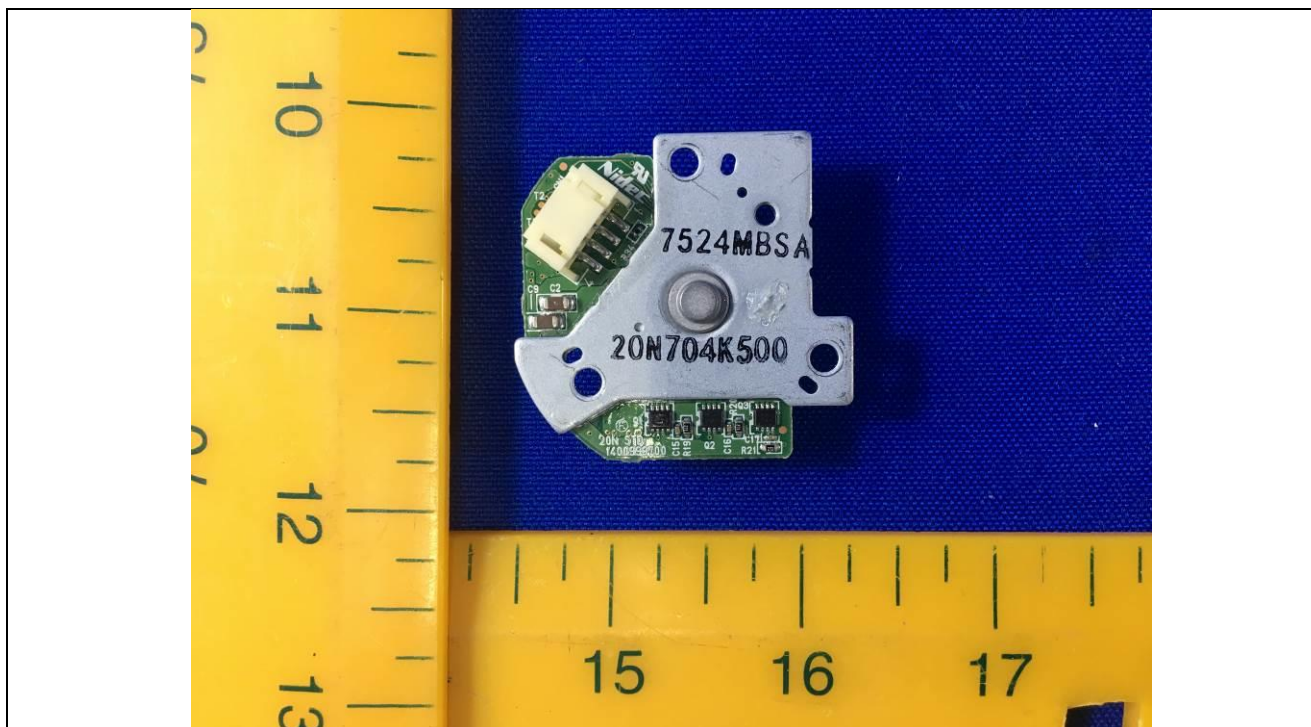
Details of: Motor for drive wheel (For model MP5FN-14165WB-RC/51)



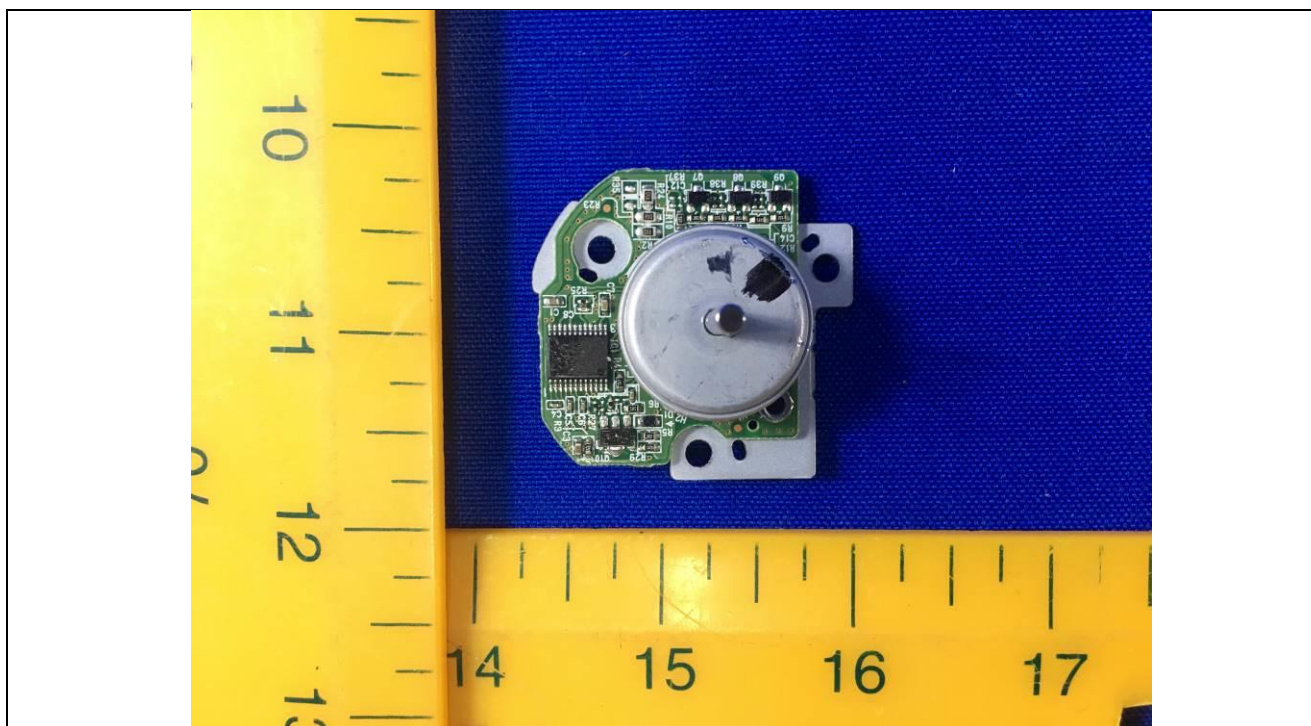
Details of: Motor for drive wheel (For model RP365-ST/14175)



Details of: Motor for vacuum cleaning function



Details of: Motor for vacuum cleaning function





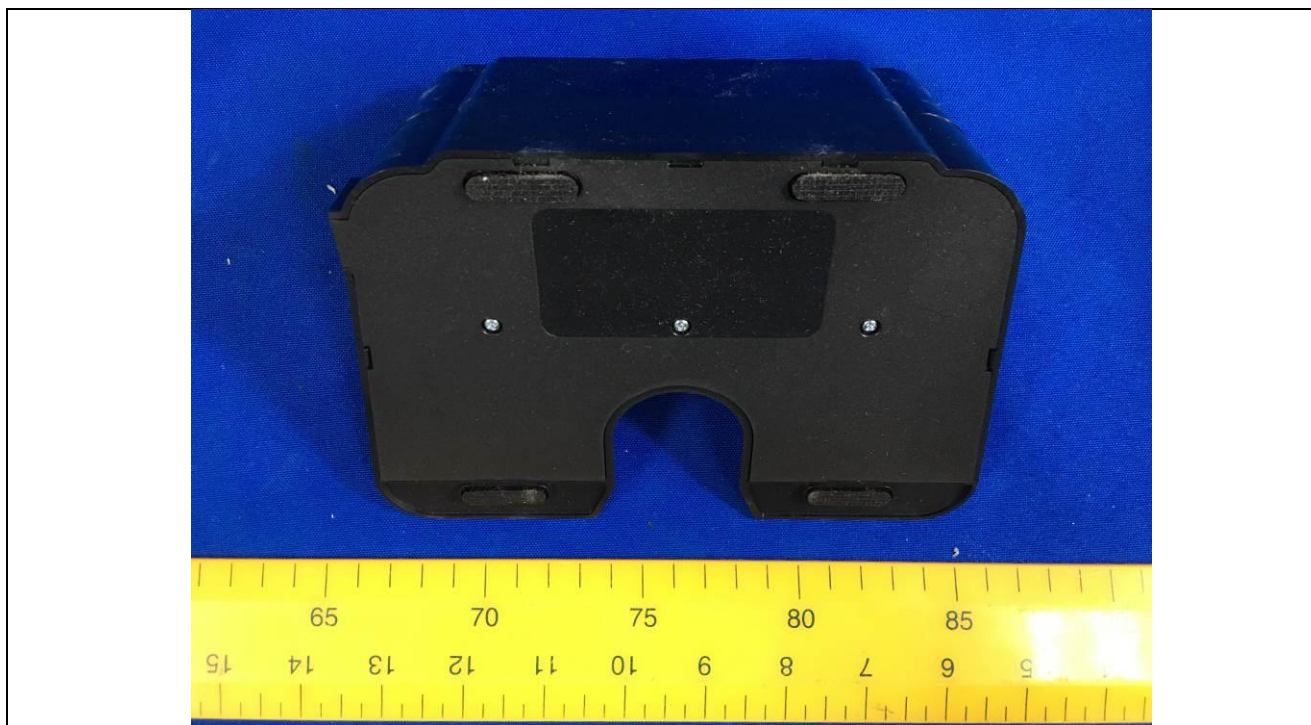
Details of: Motor for rolling



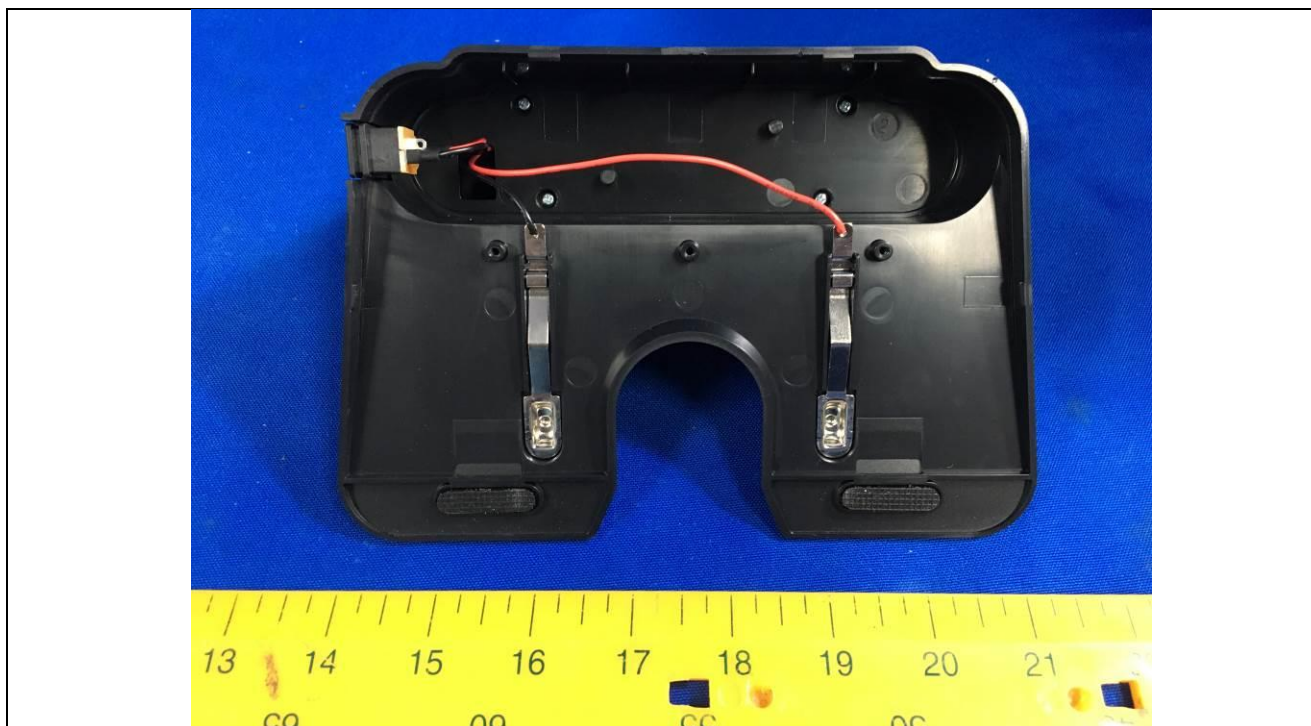
Details of: Front view for charging base



Details of: Bottom view for charging base

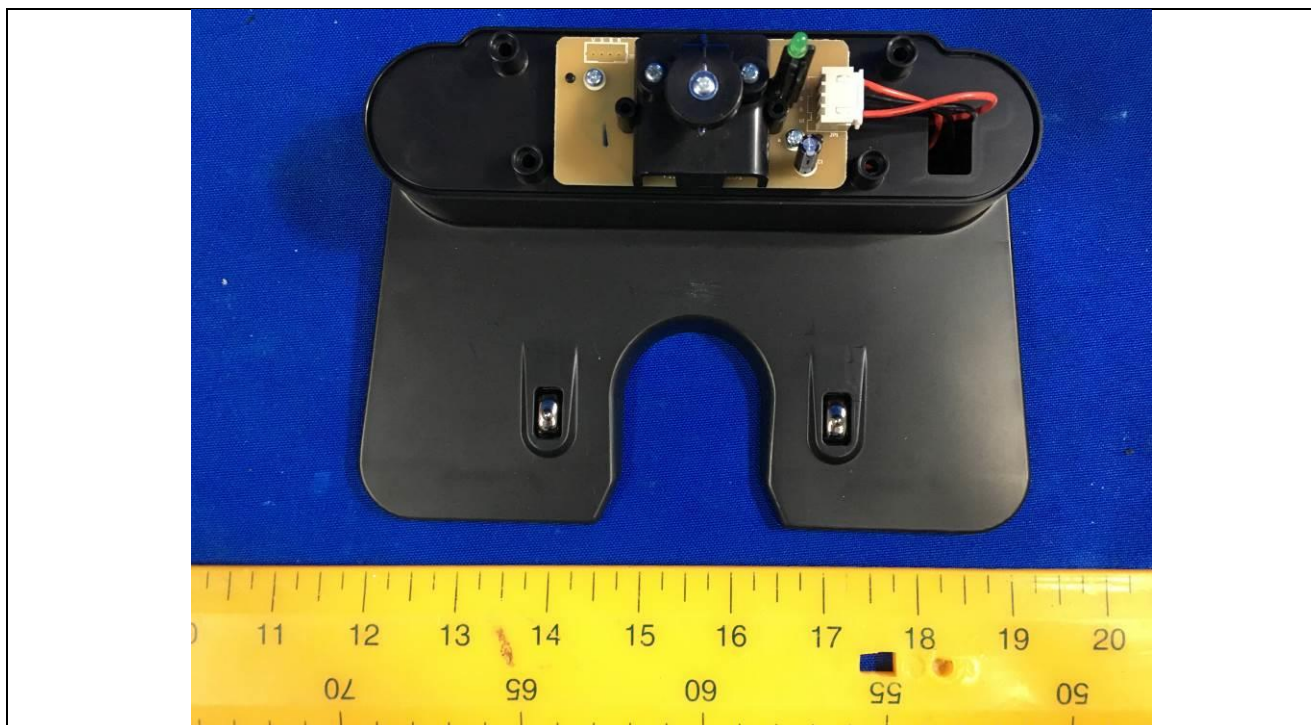


Details of: internal view for charging base

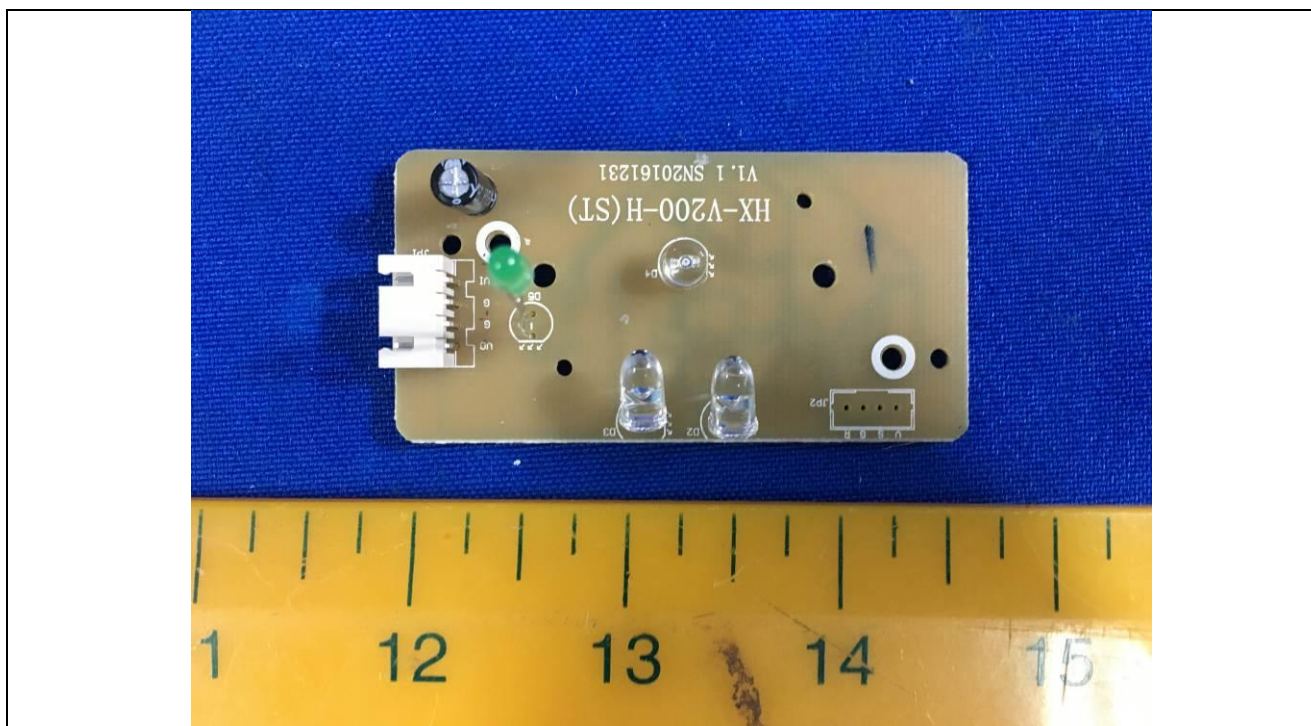




Details of: internal view for charging base



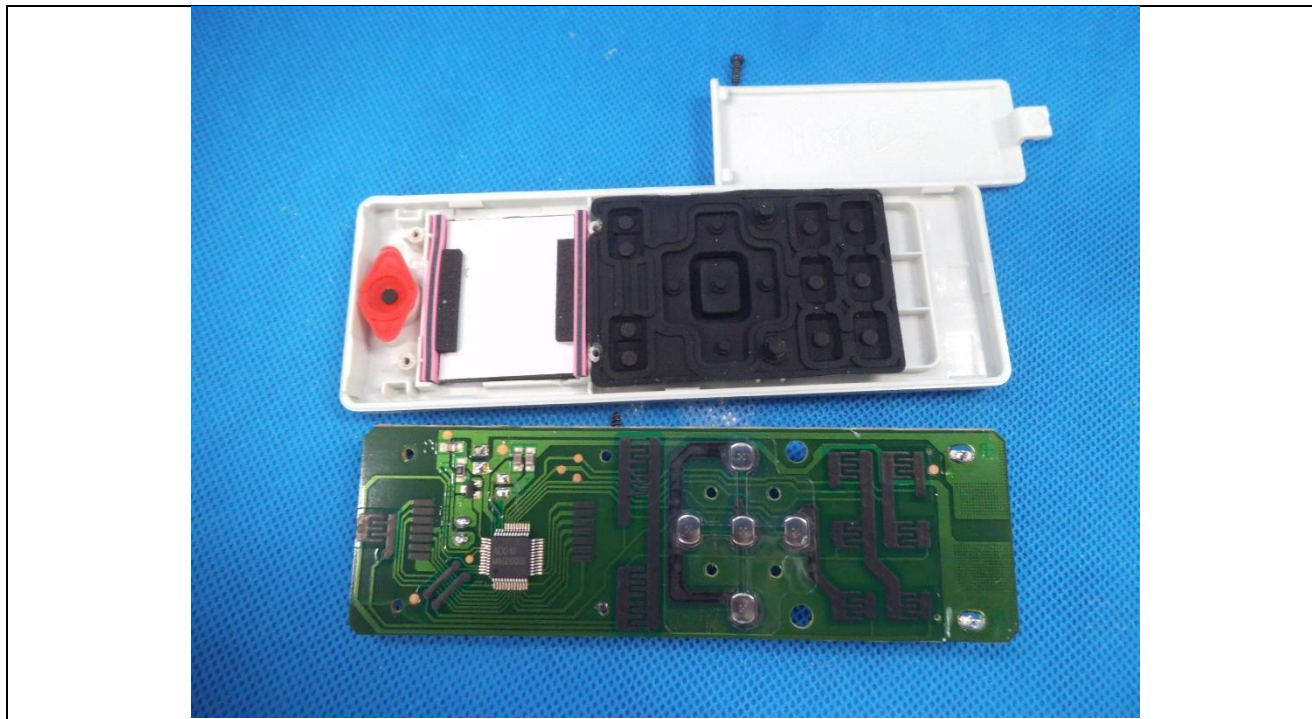
Details of: PCB for charging base



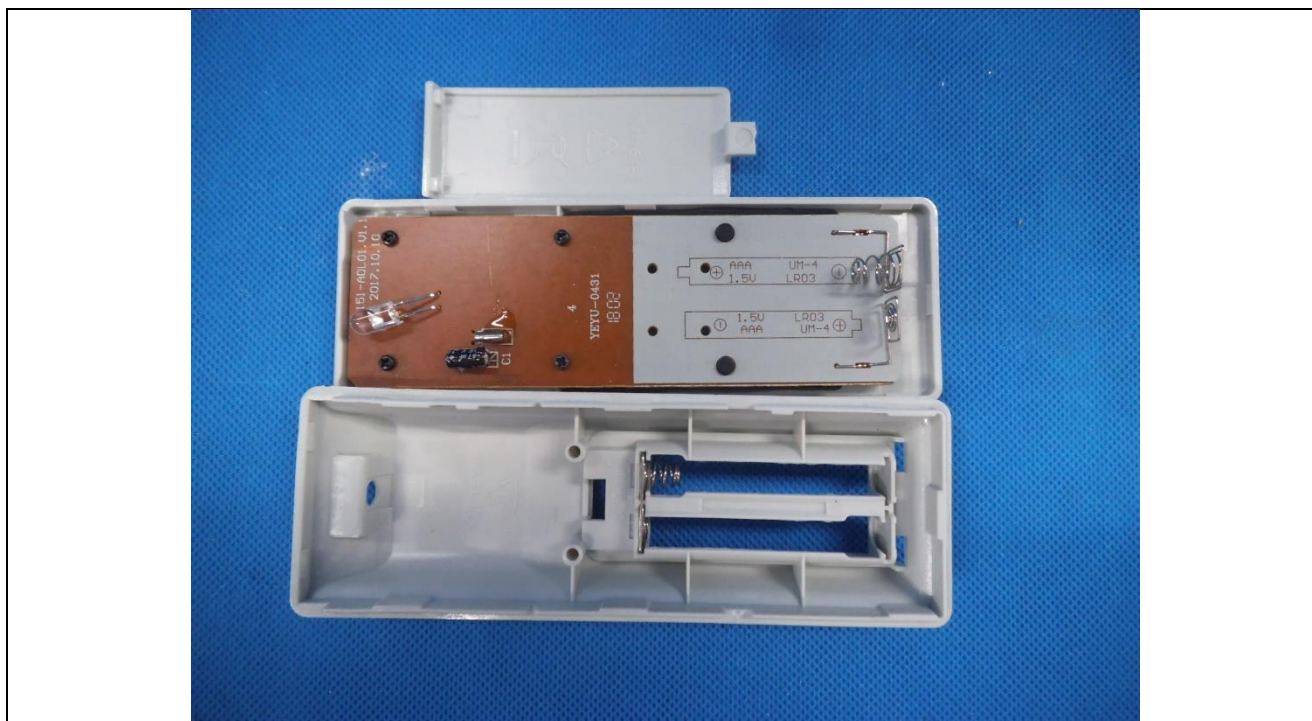
A white TESVOR remote control is shown lying horizontally on a blue textured background. The remote features a small monochrome LCD screen on the left side, which is currently blank. Above the screen is a red circular power button. To the right of the screen is a central navigation pad with four arrow keys and a central button with a double horizontal line. Surrounding the navigation pad are several other function buttons: a 'mute' button (speaker with a slash) and a 'volume' button (three vertical lines) to the left; a 'stop' button (square) and a 'play/pause' button (square with a right arrow and two vertical lines) to the right; a 'clock' button (square with a clock face) and a 'calendar' button (square with a calendar icon) below the navigation pad; and a 'repeat' button (square with a circular arrow) and a 'memory' button (square with a document icon) to the far right. The brand name 'TESVOR' is printed vertically on the right side of the device.



Details of: Remote control



Details of: Remote control



Details of: Adapter (for GSCV0600S019V12E)

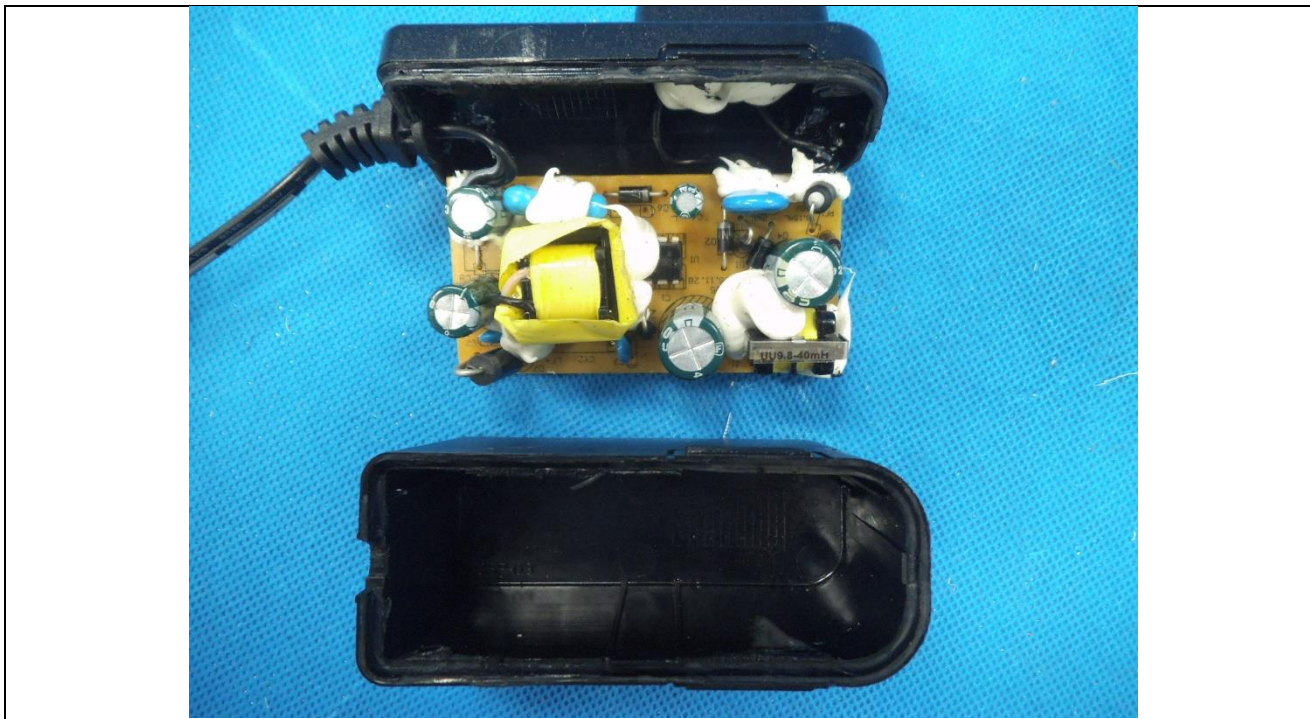


Details of: Adapter (for GSCV0600S019V12E)





Details of: Adapter (for GSCV0600S019V12E)



Details of: Adapter (for GSCV0600S019V12E)





Details of: Adapter (for YJS015D-1900600U)



Details of: Adapter (for YJS015D-1900600U)





Details of: Adapter (for YJS015D-1900600U)

