

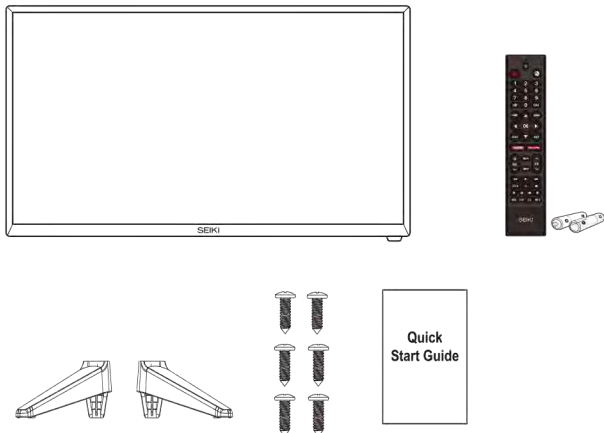
SEIKI™

androidtv

Quick Start Guide Guía de Inicio Rápido Guide de Démarrage Rapide

ULTRA-HD SMART TV SC-50UA950N

What's Included Qué se Incluye Éléments Compris



EN

1. TV set x1 set
2. Remote control with batteries (2xAAA)
3. TV stand x2 pcs
4. Six screws (884x2.2mm)
5. Quick start guide

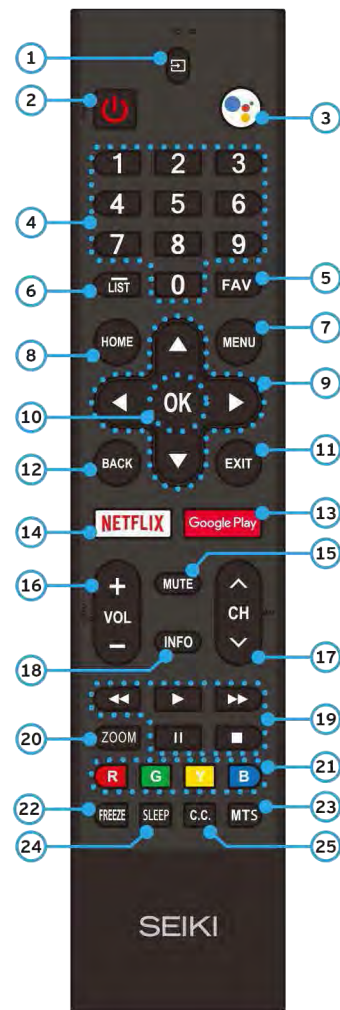
ES

1. Set del televisor x1 set
2. Control remoto con baterías (2xAAA)
3. Soporte del televisor x2 pcs
4. Seis tornillos (884x2.2mm)
5. Guía de inicio rápido

FR

1. Téléviseur x1 set
2. Télécommande avec batteries (2xAAA)
3. Support de téléviseur x2 pcs
4. Six screws (884x2.2mm)
5. Guide de démarrage rapide

Remote Control Control Remoto Télécommande



EN

1. Select input sources.
2. Turn the TV on and off.
3. Google Assistant.
4. Select a channel with digital buttons.
5. Display the favorite channel list.
6. Selects the Channel List.
7. Display the main menu.
8. Go to App home page.
9. Navigate the OSD menu.
10. Validation key.
11. Exit the menu.
12. Back to previous menu.
13. Google Play channel.
14. NETFLIX channel.
15. Mute the sound.
16. Adjust the volume.
17. Select a channel.
18. Displays the program information.
19. Digital Media Player control button.
20. Change the aspect ratio.
21. Program Edit menu.
22. Freeze or unfreeze the picture.
23. Select desired sound output channel.
24. Set the TV sleep timer.
25. Closed Caption.

ES

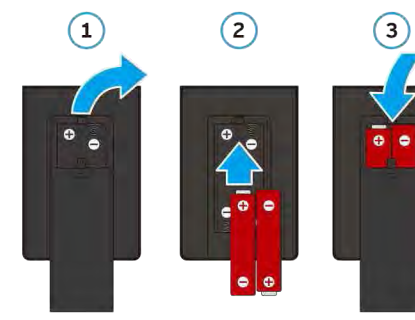
1. Seleccione la fuente de entrada.
2. Encienda y apague el televisor.
3. Google Assistant.
4. Seleccione un programa.
5. Muestra la lista de canales favoritos.
6. Muestra la lista de canales.
7. Menú principal.
8. La página de inicio de la APP.
9. Navega por el menú OSD.
10. Tecla de validación.
11. Salir del menú.
12. Volver.
13. Canal de Google Play.
14. Canal de NETFLIX.
15. Silenciar y restaurar el sonido.
16. Ajuste el volumen.
17. Seleccione un canal.
18. Muestra la información del programa.
19. Botón de control del reproductor de medios digitales.
20. Cambiar la relación de aspecto.
21. Utilizados en el menú de edición de los programas.
22. Congelar o descongelar la imagen.
23. Seleccione el canal de salida de sonido deseado.
24. Configurar el temporizador de dormir.
25. Botón para ajustar el modo de subtítulos.

FR

1. Source de signal de commutation différent.
2. Allumer et éteindre le téléviseur.
3. Google Assistant.
4. Sélectionnez un programme.
5. Afficher la liste des chaînes favorites.
6. Sélectionne la liste des chaînes.
7. Afficher le menu principal.
8. La page d'accueil de l'application.
9. Naviguez on screen affichage menu.
10. Touche de validation.
11. Quittez le menu.
12. Retour.
13. Chaîne Google Play.

13. Chaîne Google Play.
14. Chaîne NETFLIX.
15. Couper le son du téléviseur temporairement.
16. Réglez le volume.
17. Sélectionnez un canal.
18. Affichez les informations du programme.
19. Bouton de contrôle du media player digital.
20. Changer le format.
21. Le menu éditeur programme.
22. Geler ou débloquer la photo.
23. Sélectionnez le canal de sortie audio souhaité.
24. Réglez la minuterie de sommeil TV.
25. Régler le mode CC.

Remote Control Set Up Control Remoto Configuración Configuration de La Télécommande



EN

1. Remove the battery compartment cover.
2. Insert 2xAAA batteries with correct polarity (+/-) as indicated.
3. Replace the cover.

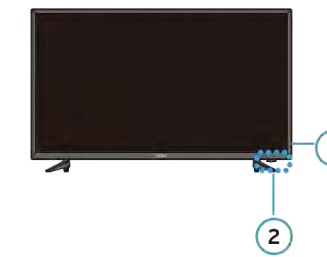
ES

1. Retire la tapa del compartimento de la batería.
2. Insertar 2xAAA baterías con correcta polaridad (+/-) como se indica.
3. Reemplazar la cubierta.

FR

1. Retirez le couvercle du compartiment de la batterie.
2. Insérer 2 piles AAA en respectant la polarité (+/-) indiquée.
3. Remplacer la couverture.

Front View Vista Frontal Vue de Devant



EN

1. POWER indicator
2. Infrared receiver

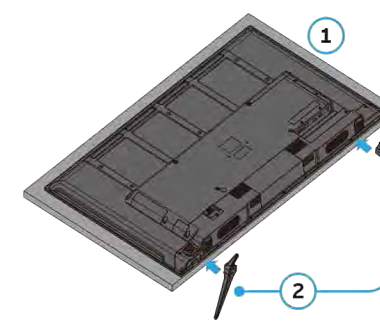
ES

1. Indicador de POWER
2. Receptor de infrarrojo

FR

1. POWER indicateur
2. Récepteur infrarouge

Installing the Stand Instalación del Soporte Installation du Support



EN

1. Lay the TV facedown on a flat, cushioned surface to avoid damaging or scratching.
2. Fix the left & right base stands to the main unit using the 6pcs provided screws (884x2.2mm).

ES

1. Coloque el televisor abajo sobre una superficie lisa y acolchonada para evitar que se dañe o raye.
2. Fije el soporte de la base izquierda y derecha de la unidad principal con 6pcs tornillos proporcionados (884x2.2mm).

FR

1. Déposez le téléviseur sur une surface plate et souple pour éviter de l'endommager ou de le gratter.
2. Fixer le support de base gauche et droit au téléviseur en utilisant les vis fournies à 6pi écés (884x2.2mm).

Specification Especificación Spécification

EN

Panel Size	49.5 inch diagonally display
Type	DLED
Panel Technology	TFT
Panel 60Hz Vs. 120Hz	60Hz
Panel Resolution	3840 x 2160
Aspect Ratio	16:9
Dynamic Contrast Ratio-Panel	3000:1
Brightness (Centre Typ.) Cd/M ²	240 Cd/M ²
Response Time (G to G)	8ms
Lamp Life (Typ. Hours)	20,000 Hours
Horizontal Viewing Angle	178°
Vertical Viewing Angle	178°
Wall-mount (LxW-mm)	400 x 200 (mm)
Environmental Conditions	Temperature: 41°F-95°F (5°C-35°C) Humidity: 20%-80%RH Atmospheric pressure: 86 kPa-106kPa

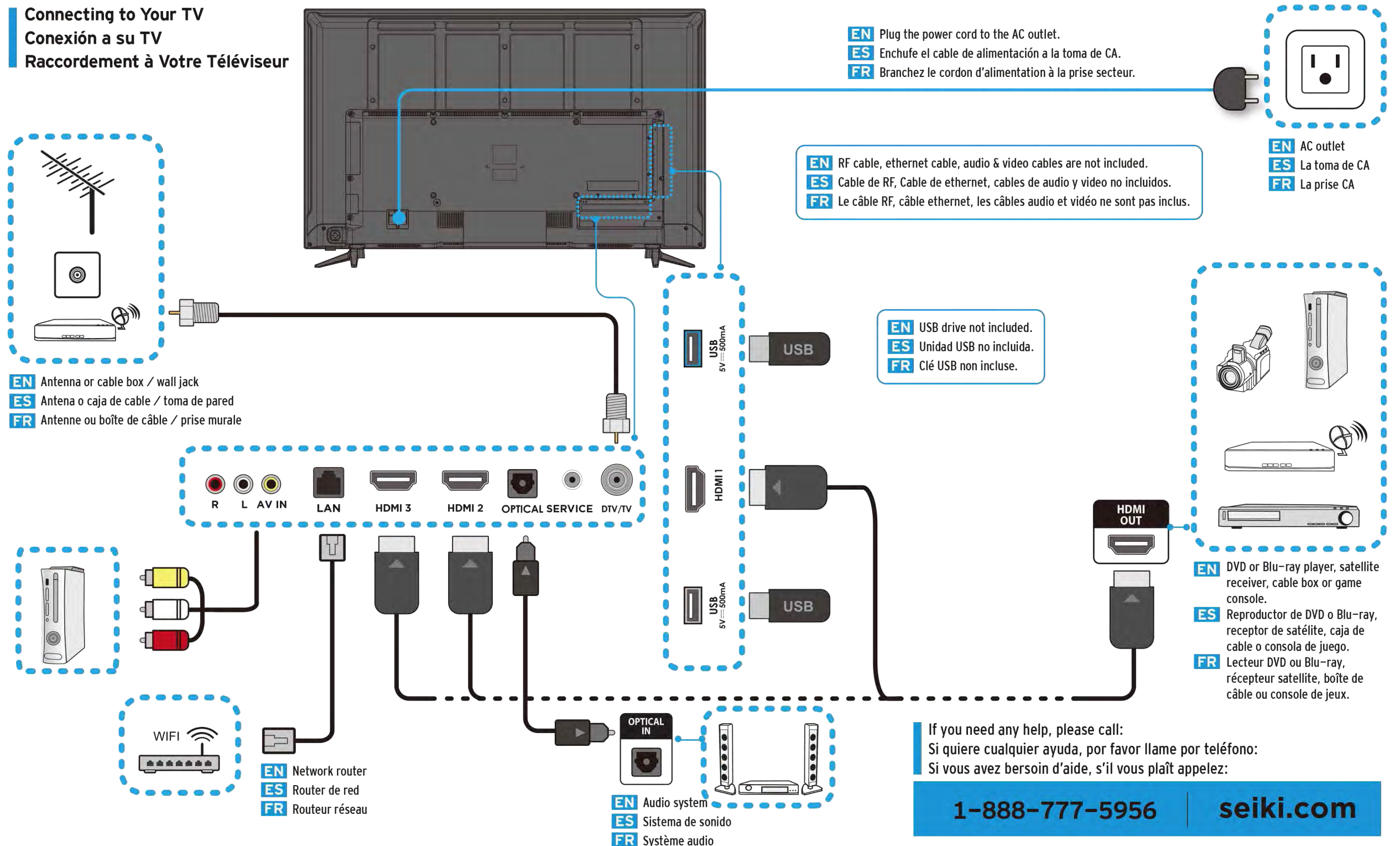
ES

Tamaño del panel	49.5 pulgadas en diagonal
Tipo de Display	DLED
Tecnología del Panel	TFT
Panel 60Hz Vs. 120Hz	60Hz
Resolución del Panel	3840 x 2160
Resolución de Aspecto	16:9
Contraste Dinámico Relación-Panel	3000:1
Brillo (Tip. Centro) Cd/M ²	240 Cd/M ²
Tiempo de Respuesta (G a G)	8ms
Vida de lámpara (Tip. Horas)	20,000 Horas
Ángulo de Vista Horizontal	178°
Ángulo de Vista Vertical	178°
Montura para la pared (Largo x Ancho-mm)	400 x 200 (mm)
Condiciones ambientales	Temperatura: 41 °F-95 °F (5 °C-35 °C) Humedad: 20% a 80% HR Presión atmosférica: 86 kPa-106kPa

FR

Taille du panneau	49.5 pouces en diagonale
Type d'affichage	DLED
Panneau de Technologie	TFT
Panneau 60Hz Vs. 120Hz	60Hz
Panneau de Résolution	3840 x 2160
Aspect Ratio	16:9
Rapport de contraste dynamique	3000:1
Luminosité (type de centre) Cd/M ²	240 Cd/M ²
Temps de Réponse (G à G)	8ms
Durée de vie la lampe (Heures Types)	20,000 Heures
Angle de Vision Horizontale	178°
Angle de Vision Verticale	178°
Wall-mount (LxW-mm)	400 x 200 (mm)
Conditions environnementales	Température: 5 °C-35 °C (41 °F-95 °F) Humidité: 20% à 80% d'humidité relative Pression atmosphérique: 86 kPa-106 kPa

Connecting to Your TV Conexión a su TV Raccordement à Votre Téléviseur



1-888-777-5956

seiki.com

CAUTION:

Use of controls, adjustments or procedures other than those specified herein may result in hazardous radiation exposure.



The lightning flash with arrowhead symbol, within an equilateral triangle is intended to alert the user to the presence of uninsulated "dangerous voltage" within the product's enclosure that may be of sufficient magnitude to constitute a risk of electric shock to the person.



The exclamation point within an equilateral triangle is intended to alert the user to the presence of important operating and maintenance (servicing) instructions in the literature accompanying the appliance.



CAUTION
RISK OF ELECTRIC SHOCK DO NOT OPEN.



CAUTION: TO REDUCE THE RISK OF ELECTRIC SHOCK, DO NOT REMOVE COVER (OR BACK). NO USER SERVICEABLE PARTS INSIDE. REFER SERVICING TO QUALIFIED SERVICE PERSONNEL.



Apparatus shall not be exposed to dripping or splashing and no objects filled with liquids, such as vases, shall be placed on the apparatus.

WARNING: TO REDUCE RISK OF FIRE OR ELECTRIC SHOCK, DO NOT EXPOSE THIS APPLIANCE TO RAIN OR MOISURE. THE BATTERIES SHOULD NOT BE EXPOSED TO EXCESSIVE HEAT SUCH AS SUNSHINE, FIRE OR THE LIKE.



This equipment is a Class II or double insulated device. It has been designed so that it does not require safety ground connection.



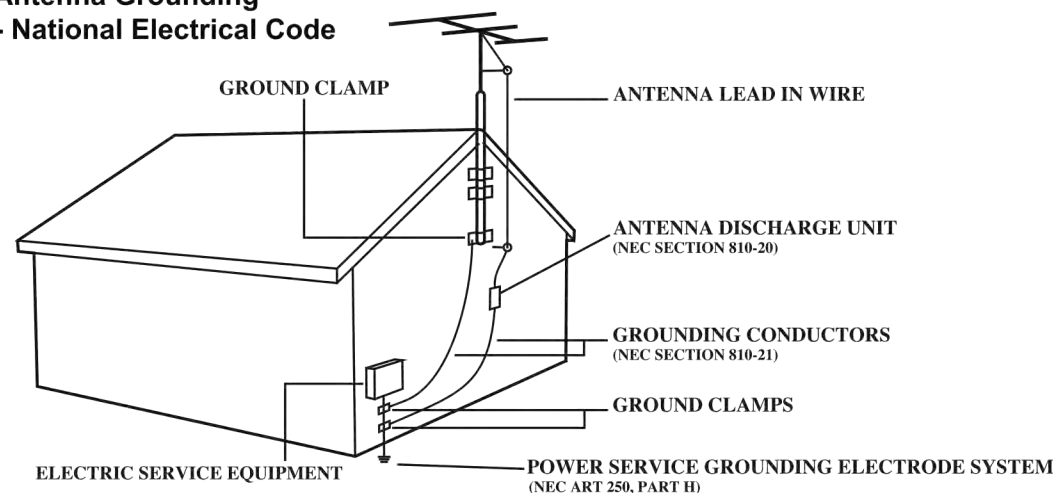
WARNING: This product can expose you to chemicals, including lead, known to the State of California to cause cancer, birth defects, or other reproductive harm. For more information go to www.P65Warnings.ca.gov.

IMPORTANT SAFETY INSTRUCTIONS Read before operating equipment

1. Read these instructions.
2. Keep these instructions.
3. Heed all warnings.
4. Follow all instructions.
5. Do not use this apparatus near water.
6. Clean only with dry cloth.
7. Do not block any of the ventilation openings. Install in accordance with the manufacturer's instructions.
8. Do not install near any heat sources such as radiators, heat registers, stoves, or other apparatus (including amplifiers) that produce heat
9. Do not defeat the safety purpose of the polarized or grounding-type plug. A polarized plug has two blades with one wider than the other. A grounding type plug has two blades and a third grounding prong. The wide blade or the third prong is provided for your safety.
If the provided plug does not fit into your outlet, consult an electrician for replacement of the obsolete outlet.
10. Protect the power cord from being walked on or pinched, particularly at plugs, convenience receptacles, and the point where they exit from the apparatus.
11. Only use attachments/accessories specified by the manufacturer.
12. Use only with a cart, stand, tripod, bracket, or table specified by the manufacturer or sold with the apparatus. When a cart is used, use caution when moving the cart/apparatus combination to avoid injury from tip-over.
13. Unplug this apparatus during lightning storms or when unused for long periods of time.
14. Refer all servicing to qualified personnel. Servicing is required when the apparatus has been damaged in any way, such as power-supply cord or plug is damaged, liquid has been spilled or objects have fallen into the apparatus, (delete "or if ")the apparatus has been exposed to rain or moisture, does not operate normally, or has been dropped.
15. This product may contain lead and mercury. Disposal of these materials may be regulated due to environmental considerations. For disposal or recycling information, please contact your local authorities or the Electronic Industries Alliance (www.eiae.org).
16. **Damage Requiring Service** - The appliance should be serviced by qualified service personnel when:
 - A. The power supply cord or the plug has been damaged;
 - B. Objects have fallen or liquid has been spilled into the appliance;
 - C. The appliance has been exposed to rain;
 - D. The appliance does not appear to operate normally or exhibits a marked change in performance;
 - E. The appliance has been dropped or the enclosure damaged.
17. **Tilt/Stability** - All televisions must comply with recommended international global safety standards for tilt and stability properties of its cabinet design.
 - Do not compromise these design standards by applying excessive pull force to the front, or top, of the cabinet, which could ultimately overturn the product.
 - Also, do not endanger yourself, or children, by placing electronic equipment/toys on the top of the cabinet. Such items could unsuspectingly fall from the top of the set and cause product damage and/or personal injury.
18. **Wall or Ceiling Mounting** - The appliance should be mounted to a wall or ceiling only as recommended by the manufacturer.
19. **Power Lines** - An outdoor antenna should be located away from power lines.
20. **Outdoor Antenna Grounding** - If an outside antenna is connected to the receiver, be sure the antenna system is grounded so as to provide some protection against voltage surges and built up static charges. Section 810 of the National Electrical Code, ANSI/NFPA No. 70-1984, provides information with respect to proper grounding of the mast and supporting structure, grounding of the lead-in wire to an antenna discharge unit, size of grounding connectors, location of antenna-discharge unit, connection to grounding electrodes, and requirements for the grounding electrode. See Figure below.
21. **Object and Liquid Entry** - Care should be taken so that objects do not fall and liquids are not spilled into the enclosure through openings.
22. **Battery usage CAUTION** - To prevent battery leakage that may result in bodily injury, property damage, or damage to the unit:
 - Install all batteries correctly, with + and - aligned as marked on the unit.
 - Do not mix batteries (old and new or carbon and alkaline, etc.).
 - Remove batteries when the unit is not used for a long time.
23. Apparatus shall not be exposed to dripping or splashing and no objects filled with liquids, such as vases, shall be placed on the apparatus.
24. Minimum distances around the apparatus for sufficient ventilation max 3.0mm
25. The ventilation should not be impeded by covering the ventilation openings with items, such as newspapers, table-cloths, curtains, etc.;
26. No naked flame sources, such as lighted candles, should be placed on the apparatus
27. Attention should be drawn to the environmental aspects of battery disposal
28. The MAINS plug or an appliance coupler is used as the disconnect device, the disconnect device shall remain readily operable;
29. Wall-mounted screws have a diameter of M6, a length of 10mm, and a quantity of four;
30. **WARNING**
Never place a television set in an unstable location. A television set may fall, causing serious personal injury or death. Many injuries, particularly to children, can be avoided by taking simple precautions such as:
 - Using cabinets or stands recommended by the manufacturer of the television set.
 - Only using furniture that can safely support the television set.
 - Ensuring the television set is not overhanging the edge of the supporting furniture.
 - Not placing the television set on tall furniture (for example, cupboards or bookcases) without anchoring both the furniture and the television set to a suitable support.
 - Not placing the television set on cloth or other materials that may be located between the television set and supporting furniture.
 - Educating children about the dangers of climbing on furniture to reach the television set or its controls.If your existing television set is being retained and relocated, the same considerations as above should be applied.

Note to the Cable TV system installer: This reminder is provided to call the Cable TV system installer's attention to Article 820-40 of the NEC that provides guidelines for proper grounding and, in particular, specifies that the cable ground shall be connected to the grounding system of the building, as close to the point of cable entry as practical.

Example of Antenna Grounding as per NEC - National Electrical Code



FCC STATEMENT

1. This device complies with Part 15 of the FCC Rules. Operation is subject to the following two conditions:
 - (1) This device may not cause harmful interference, and
 - (2) This device must accept any interference received, including interference that may cause undesired operation.
2. any Changes or modifications not expressly approved by the party responsible for compliance could void the user's authority to operate the equipment.

NOTE: This equipment has been tested and found to comply with the limits for a Class B digital device, pursuant to Part 15 of the FCC Rules. These limits are designed to provide reasonable protection against harmful interference in a residential installation.

This equipment generates uses and can radiate radio frequency energy and, if not installed and used in accordance with the instructions, may cause harmful interference to radio communications.

However, there is no guarantee that interference will not occur in a particular installation. If this equipment does cause harmful interference to radio or television reception, which can be determined by turning the equipment off and on, the user is encouraged to try to correct the interference by one or more of the following measures:

Reorient or relocate the receiving antenna.

Increase the separation between the equipment and receiver.

Connect the equipment into an outlet on a circuit different from that to which the receiver is connected.

Consult the dealer or an experienced radio/TV technician for help.

FCC Radiation Exposure Statement

This equipment complies with FCC radiation exposure limits set forth for an uncontrolled environment. This equipment should be installed and operated with minimum distance 20cm between the radiator & your body

IC warning

-English:

This device contains licence -exempt transmitter(s)/receiver(s) that comply with Innovation, Science and Economic Development Canada's licence -exempt RSS(s). Operation is subject to the following two conditions:

- (1) This device may not cause interference; and
- (2) This device must accept any interference, including interference that may cause undesired operation of the device.

This equipment complies with FCC and IC radiation exposure limits set forth for an uncontrolled environment. This equipment should be installed and operated with minimum distance 20cm between the radiator & your body

-French:

Cet appareil contient des émetteurs / récepteurs exemptés de licence conformes aux RSS (RSS) d'Innovation, Sciences et Développement économique Canada. L'exploitation est autorisée aux deux conditions suivantes :

- (1) l'appareil ne doit pas produire de brouillage, et
- (2) l'utilisateur de l'appareil doit accepter tout brouillage radio électrique subi, même si le brouillage est susceptible d'en compromettre le fonctionnement."

Cet appareil est conforme à FCC et IC l'exposition aux rayonnements limites fixées pour un environnement non contrôlé. Cet appareil doit être installé et utilisé avec une distance minimale de 20 cm entre le radiateur et votre corps. Cet transmetteur ne doit pas être co-situé ou opérant en liaison avec toute autre antenne ou transmetteur.

材质：128G铜版纸
印刷：正反面彩色印刷，
双摺叠，摺叠后尺寸：140x210mm

计划表号	CKJH1910030-50Y18			客户品牌	SEIKI	电子确认	李旭辉 2019.10.25 13:54:13 +08'00'
名称	快安指南QSG					结构确认	
工厂型号	50Y18			销往国家	美国	销售确认	
物料编码	A030403A50000029					设计确认	李肖媚
主板方案							
版本号	V1.0	图纸比例	1:1	南京中电熊猫家电有限公司东莞分公司			