



**ezlo plug hub**

FCC ID:2AMY9PLUGHUB  
IC:22968-PLUGHUB

**Quick Start Guide**

# Congratulations On Choosing The PlugHub

And welcome to Vera, the smarter home control solution  
that makes your home safer and your life easier.

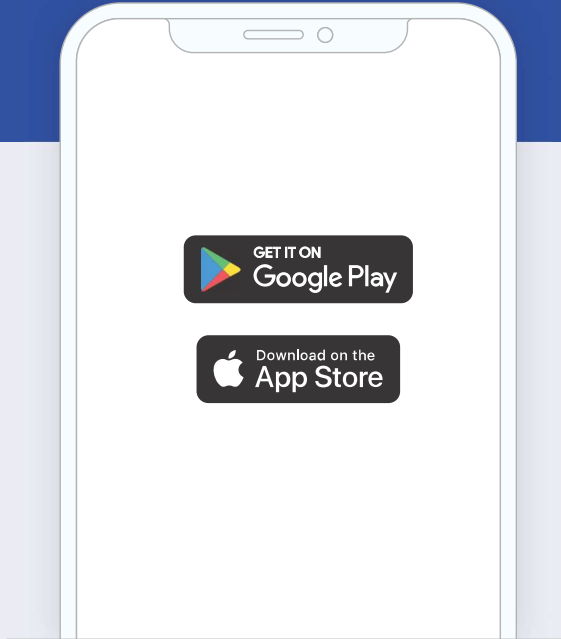
**It's easy to set up your PlugHub.  
Here's what you need to do.**

**Signal (frequency): 908.4MHz / 916MHz / 2.4GHz**

- Plug the PlugHub into an outlet and connect smartphone to PlugHub via Wi-Fi (2.4GHz).
- After connecting Wi-Fi, PlugHub is ready to connect other smart devices via Z-Wave (908.4/916Mhz).

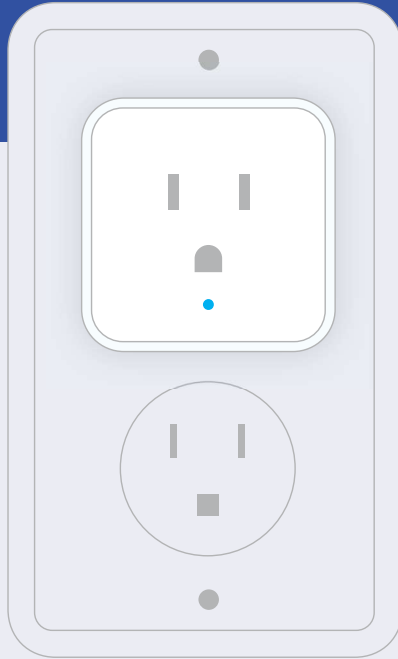
## Step 1

Install the Vera app on your mobile device. Just look for the  in the iOS App Store or on Google Play.



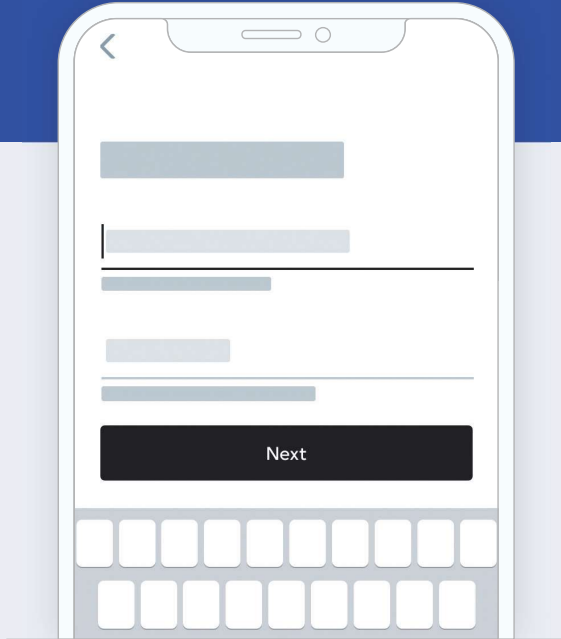
## Step 2

Now put your PlugHub into an outlet. It will power on automatically and the blue LED on the device will blink about once per second.



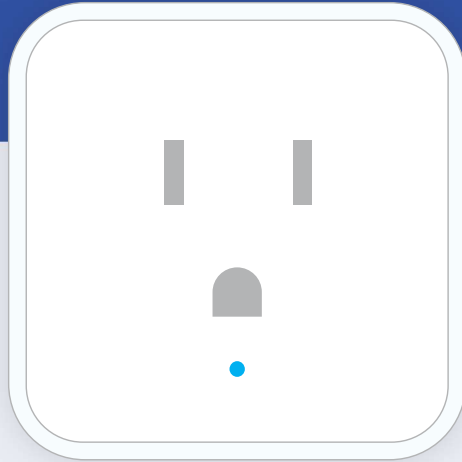
### Step 3

Open your Vera app, create an account, and follow the prompts to set up your PlugHub.




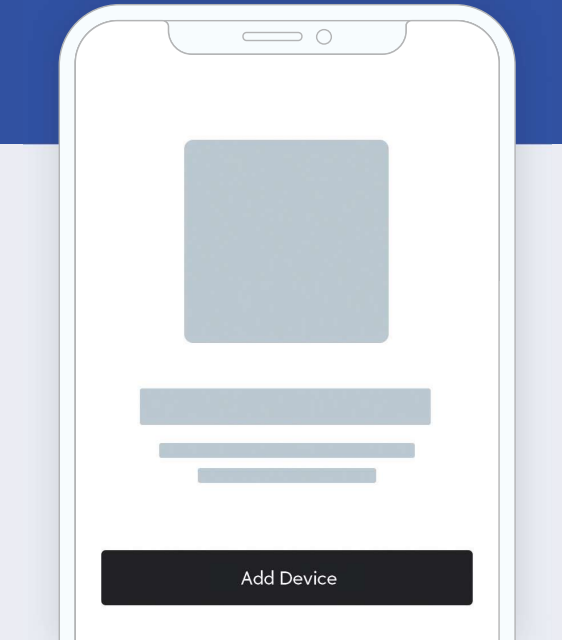
## Step 4

Congratulations, your PlugHub has been set up successfully. The LED will now remain a steady color.



## Step 5

For using PlugHub, you'll want to plug in a lamp, or add other devices like thermostats or sensors to your Vera system. Just look for the  sign on your dashboard, select Devices, and follow the prompts.



# Make your home safer. Make your life easier.

The PlugHub lets you control multiple devices from a single app. When you add devices such as lights, thermostats, sensors, and door locks to your Vera system, you'll be able to enjoy greater comfort and peace of mind with just a touch.

## **Control your home from anywhere.**

The Vera app offers some key features that help you simplify things at home and help you keep an eye on things when you're away.

### **Scenes**

Vera gives you the power to control all your devices with a single tap, or create automations based on triggers—like automatically fading up your lights as day turns to night—so you don't have to do anything at all.

### **Notifications**

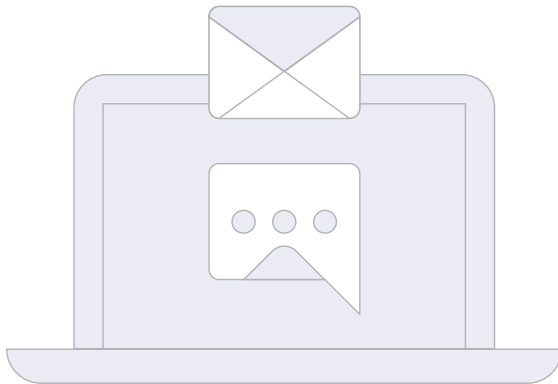
Your Vera system can send an alert via text or email to let you, or other users — know about what's going on at home. Want to know when the front door opens? Or if motion is detected outside? You can set alerts for just about anything.



# Need Help Setting Up?

You can reach our Customer Care team 24/7 at 866.966.2272 or [support@getvera.com](mailto:support@getvera.com)

You can also purchase our Vera Easy Start service and get one hour of personalized setup assistance through a phone call with one of our most experienced agents. Visit [getvera.com/support](https://getvera.com/support) to learn more.



## FCC caution

### Federal Communication Commission (FCC) Radiation Exposure Statement

When using the product, maintain a distance of 20cm from the body to ensure compliance with RF exposure requirements.

#### FCC statements:

This device complies with part 15 of the FCC rules. Operation is subject to the following two conditions:

- (1) this device may not cause harmful interference, and
- (2) this device must accept any interference received, including interference that may cause undesired operation.

NOTE: The manufacturer is not responsible for any radio or TV interference caused by unauthorized modifications or changes to this equipment. Such modifications or changes could void the user's authority

to operate the equipment.

NOTE: This equipment has been tested and found to comply with the limits for a Class B digital device,

pursuant to part 15 of the FCC Rules. These limits are designed to provide reasonable protection against

harmful interference in a residential installation. This equipment generates uses and can radiate radio

frequency energy and, if not installed and used in accordance with the instructions, may cause harmful

interference to radio communications. However, there is no guarantee that interference will not occur in

a particular installation. If this equipment does cause harmful interference to radio or television reception,

which can be determined by turning the equipment off and on, the user is encouraged to try to correct the

interference by one or more of the following measures:

- Reorient or relocate the receiving antenna.
- Increase the separation between the equipment and receiver.
- Connect the equipment into an outlet on a circuit different from that to which the receiver is connected.
- Consult the dealer or an experienced radio/TV technician for help.

To find the complete User Guide, as well as information about the products FCC/IC registration, visit [getvera.com/support](https://getvera.com/support) and click on "Downloads, Firmware & Manuals."

This device complies with Industry Canada licence - exempt RSS standard(s).

Operation is Subject to the following two conditions:

- (1) this device may not cause interference, and
- (2) this device must accept any interference, including interference that may cause undesired operation of the device.

Le présent appareil est conforme aux CNR d'Industrie Canada applicables aux appareils radio exempts de licence.

L'exploitation est autorisée aux deux conditions suivantes :

- (1) l'appareil ne doit pas produire de brouillage, et
- (2) l'utilisateur de l'appareil doit accepter tout brouillage radioélectrique subi, même si le brouillage est susceptible d'en compromettre le fonctionnement.

This Class B digital apparatus complies with Canadian ICES - 003.

Cet appareil numérique de la classe B est conforme à la norme NMB - 003 du Canada.



ezlo plug hub