

# Annex D Plots of Maximum SAR Test Results

## MEASUREMENT 1

Type: Phone measurement (Complete)

Parameter area scan=step 12 mm

Parameter zoom scan=dx=5mm, dy=5mm, dz=5mm

Date of measurement: 2019.03.15

Measurement duration: 18 minutes 57 seconds

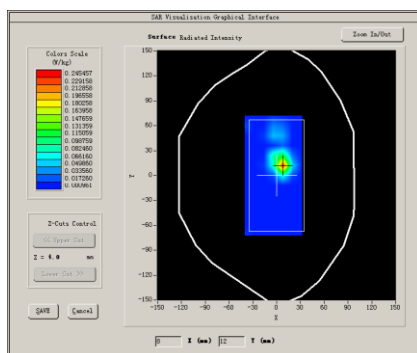
### A. Experimental Conditions.

<b>Phantom</b>	Body
<b>Device</b>	Plane
<b>Band</b>	IEEE 802.11b ISM
<b>Channels</b>	HIGH
<b>Signal</b>	IEEE 802.b

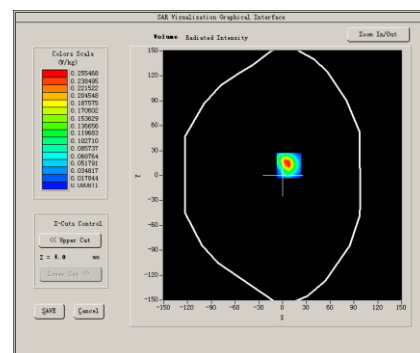
### B. SAR Measurement Results.

<b>Channel</b>	11
<b>Frequency (MHz)</b>	2462.0
<b>Relative permittivity (real part)</b>	52.688
<b>Conductivity (S/m)</b>	1.976
<b>Power drift (%)</b>	2.05
<b>Ambient Temperature:</b>	22.6°C
<b>Liquid Temperature:</b>	22.3°C
<b>ConvF:</b>	4.96
<b>Duty Cycle:</b>	1:1.0

#### SURFACE SAR



#### VOLUME SAR

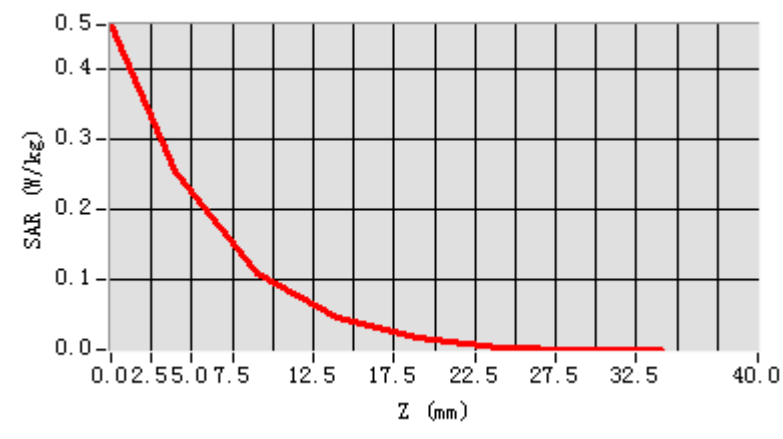


**Maximum location: X=8.000000 Y=12.000000**

**SAR Peak: 0.471406 W/kg**

<b>SAR 10g (W/Kg)</b>	0.081154
<b>SAR 1g (W/Kg)</b>	0.228900

<b>Z (mm)</b>	0.00	4.00	9.00	14.00	19.00	24.00	29.00	34.00
<b>SAR (W/Kg)</b>	0.46258	0.25546	0.10904	0.04667	0.01798	0.00461	0.00092	0.00098
<b>g)</b>	7	8	5	3	6	1	6	9



<b>3D screen shot</b>	<b>Hot spot positio</b>
