

Preface

Copyright

This publication, including all photographs, illustrations and software, is protected under international copyright laws, with all rights reserved. Neither this manual, nor any of the material contained herein, may be reproduced without written consent of the author.

Version 1.0

Disclaimer

The information in this document is subject to change without notice. The manufacturer makes no representations or warranties with respect to the contents hereof and specifically disclaims any implied warranties of merchantability or fitness for any particular purpose. The manufacturer reserves the right to revise this publication and to make changes from time to time in the content hereof without obligation of the manufacturer to notify any person of such revision or changes.

Trademark Recognition

Windows® 10 are registered trademarks of Microsoft Corp.

Other product names used in this manual are the properties of their respective owners and are acknowledged.

Federal Communications Commission (FCC)

This equipment has been tested and found to comply with the limits for a Class B digital device, pursuant to Part 15 of the FCC Rules. These limits are designed to provide reasonable protection against harmful interference in a residential installation. This equipment generates, uses, and can radiate radio frequency energy and, if not installed and used in accordance with the instructions, may cause harmful interference to radio communications. However, there is no guarantee that interference will not occur in a particular installation. If this equipment does cause harmful interference to radio or television reception, which can be determined by turning the equipment off and on, the user is encouraged to try to correct the interference by one or more of the following measures:

- Reorient or relocate the receiving antenna
- Increase the separation between the equipment and the receiver
- Connect the equipment onto an outlet on a circuit different from that to which the receiver is connected
- Consult the dealer or an experienced radio/TV technician for help

Any changes or modifications not expressly approved by the grantee of this device could void the user's authority to operate the equipment. This equipment complies with FCC radiation exposure limits set forth for an uncontrolled environment. This equipment should be installed and operated with minimum distance 20cm between the radiator & your body.

Declaration of Conformity

This device complies with part 15 of the FCC rules. Operation is subject to the following conditions:

- This device may not cause harmful interference, and
- This device must accept any interference received, including interference that may cause undesired operation

Safety Instructions

Your system is designed and tested to meet the latest standards of safety for information technology equipment. However, to ensure your safety, it is important that you read the following safety instructions.

Setting up your system

- Read and follow all instructions in the documentation before you operate your system.
- Do not use this product near water or a heated source such as a radiator.
- Set up the system on a stable surface.
- Openings on the chassis are for ventilation. Do not block or cover these openings. Make sure you leave plenty of space around the system for ventilation. Never insert objects of any kind into the ventilation openings.
- Use this product in environments with ambient temperatures between 0°C and 40°C.
- If you use an extension cord, make sure that the total ampere rating of the devices plugged into the extension cord does not exceed its ampere rating.
- Only technicians are allowed to open the chassis, please contact with your vendor / supplier for any technical support.

Attention during use

- Do not step on the power cord or let anything rest on top of it.
- Do not spill water or any other liquid on your system.
- When the system is turned OFF, a small amount of electrical current still flows. Always unplug all power, modem, and network cables from the power outlets before cleaning the system.
- If you encounter the following technical problems with the product, unplug the power cord and contact a qualified service technician or your retailer.
 - The power cord or plug is damaged.
 - Liquid has been spilled into the system.
 - The system does not function properly even if you follow the operating instructions.
 - The system was dropped or the cabinet is damaged.
 - The system performance changes



The warranty does not apply to products that have been disassembled by users

Safety cautions and warnings

Product disposal notice



IMPORTANT:

This symbol if the crossed out wheeled bin indicates that the product (electrical and electronic equipment) should not be placed in municipal waste. Check local regulations for disposal of electronic products.

Nordic Lithium Cautions (for lithium-ion batteries)



CAUTION:

Danger of explosion if battery is incorrectly replaced only with the same or equivalent type recommended by the manufacturer. Dispose of used batteries according to the manufacturer's instructions.

Product disposal notice



1. Do not place this product underneath heavy loads or in an unstable position.
2. Do not use or expose this product around magnetic fields as magnetic interference may affect the performance of the product.
3. Do not expose this product to high levels of direct sunlight, high-humidity or wet conditions.
4. Do not block the air vents to this product or impede the airflow in any way.

TABLE OF CONTENTS

Preface	i
Chapter 1	1
Introducing the PC	1
Introduction.....	1
Specification.....	2
Front and Rear I/O.....	3
Packing Contents.....	5
Chapter 2	7
System Quick Installation	7
Chapter 3	9
Using the Software	9
Installing the Windows OS.....	9
Windows 10 OS Recovery.....	10
Chapter 4	15
Trouble Shooting	15
Trouble shooting and problem solution.....	15

Chapter 1

Introducing the PC

Introduction

Thank you for choosing this 1.1L case of great performance and with stylish and flexible design.

Supports LGA1200 Socket for Intel® 10th Gen processor and a dimension of 205mm (H)* 176mm (D)* 33mm (W), 1.1L SFF provides the features of low power consumption (working with a 90/120Watt power adaptor), and space saving. The chipset is Intel® H410, supporting up to 64 GB of system memory with DDR4 memory SO-DIMM, 2.5" SATA III HDD, 4 independent displays.



CPU TDP 35W



CPU TDP 65W

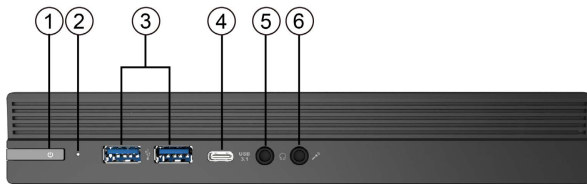


*Note:
ID design may vary.*

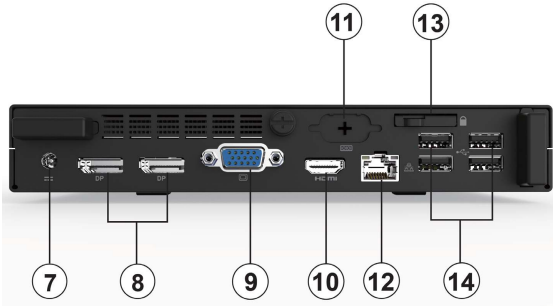
Specification

Chipset	<ul style="list-style-type: none"> Intel® H410
CPU Support	<ul style="list-style-type: none"> Supports Intel® 10th Gen processors with TDP 35W or 65W max
Memory	<ul style="list-style-type: none"> 2 x SO-DIMM DDR4 2666 (i3/i5 CPU) / 2933 (i7/i9 CPU) MHz, up to 64 GB, Dual-channel
Graphics	<ul style="list-style-type: none"> Intel® HD graphics from CPU Supports 4K resolution and DX12 for Intel® 10th processor
Storage	<ul style="list-style-type: none"> Supports 1 x 2.5" SATA III HDD
Expansion	<ul style="list-style-type: none"> 1 x M.2 slot - Supports 2280 SATA, PCIe SSD
LAN	<ul style="list-style-type: none"> Realtek Gigabit LAN
Wifi	<ul style="list-style-type: none"> Supports Intel® AC3165, 802.11ac, 1x1, BT 4.2
Video Output	<ul style="list-style-type: none"> 1 x HDMI port 1 x D-Sub port 2 x DP ports <p>(MAX.2 Video Outputs)</p>
Front Panel	<ul style="list-style-type: none"> 2 x USB 3.2 Gen 1x1 1 x USB 3.2 Gen 1x1 Type-C 1 x MIC-in 1 x Line-out 1 x Power button
Rear Panel	<ul style="list-style-type: none"> 4 x USB 2.0 ports 1 x 10/100/1000 LAN RJ45 1 x COM port (optional) 1 x HDMI port 1 x D-Sub port 2 x DP ports 1 x DC-IN
Adapter	<ul style="list-style-type: none"> CPU TDP 35W: 19V/4.74A, 90W power adaptor CPU TDP 65W: 19V/6.32A, 120W power adaptor
OS Support	<ul style="list-style-type: none"> Hardware Compatible with Windows 10 / Linux
Kensington lock	<ul style="list-style-type: none"> Supported
Dimensions (mm)	<ul style="list-style-type: none"> 205mm * 176mm * 33mm

Front and Rear I/O

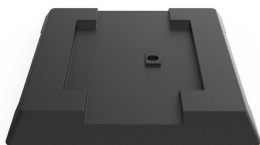


- 1. Power Button with LED** Press the power button to turn the system on and off.
- 2. HDD LED** This is the HDD LED light.
- 3. USB 3.2 Gen 1x1** The USB 3.2 Gen 1x1 connectors are used for devices with USB, such as mouse, keyboard, printer, scanner.
- 4. USB 3.2 Gen 1x1 Type-C** The USB 3.2 Gen 1x1 Type-C connector is used for devices with USB Type-C.
- 5. Headphone Jack** Connecting Headphone.
- 6. Mic In Jack** Connecting Microphone.



- | | |
|--------------------------------|---|
| 7. DC Jack | It is used for power adapter. |
| 8. DP Ports | Connecting display devices to the DP ports. |
| 9. D-SUB Connector | Connecting VGA Monitor. |
| 10. HDMI Port | Connecting a display device to the HDMI port. |
| 11. COM Port (optional) | Connecting a device with COM port. |
| 12. LAN | Connecting the Network. |
| 13. Kensington Lock | This is the security lock. |
| 14. USB 2.0 Connectors | Connecting USB 2.0 compatible devices. |

Packing Contents



Stand



VESA Mount



Power 90W
CPU TDP 35W



Power 120W
CPU TDP 65W



35W cooler



65W cooler



NOTE: Please contact us immediately if any of the items is damaged or missing. (Memory, SSD, CPU and HDD are required to be purchased additionally.)

Memo

Chapter 2

Installing the PC

System Quick Installation

1. Connecting HDMI device.



2. Connecting VGA Monitor. (D-SUB Connector)



3. The USB connectors are used for attaching USB devices, such as mouse, keyboard, printer, scanner and other USB-compatible device.



4. Attaching Ethernet cable here. (LAN Connector)



5. Connecting the Microphone. (Microphone Jack)



6. Connecting Speakers or Headphones. (Headphone Jack)



7. Connecting Power. (DC jack)



Chapter 3

Using the Software

Installing the Windows OS

There are two ways to install the Windows OS:

1. Install Windows OS via Windows official DVD.
2. Install Windows OS via USB flash drive.
 - a) Create an ISO file from the Windows 10 DVD.

This free program from Microsoft properly formats your flash drive and then copies the contents of the Windows 10 installation ISO file to the flash drive.

- b) Boot from the USB device that you just created to start the Windows 10 installing process.



You need to change the booting priority in BIOS in order to boot from USB device. Enter into BIOS and select the Boot in menu (or press the hotkey F7), set USB drive as the first booting priority.

Windows 10 OS Recovery

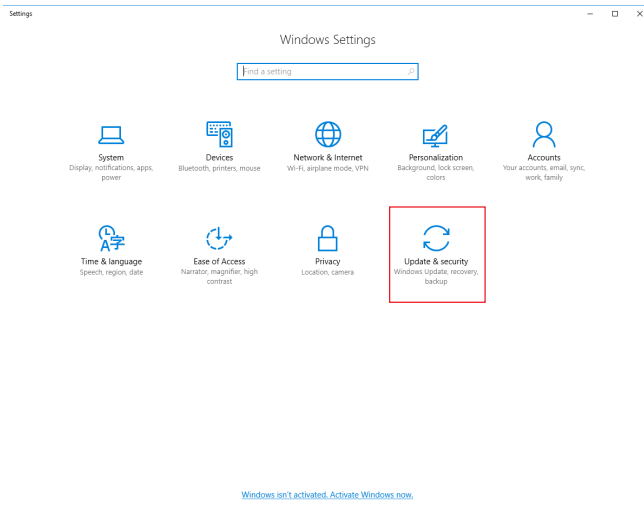
Windows 10 Recovery has basically 2 categories. Keep my files & Remove everything. Each types of recovery was defined by Microsoft, you can check their website “Reset my PC” section for further definition and recovery scenarios.

<https://support.microsoft.com/en-us/help/12415/windows-10-recovery-options>

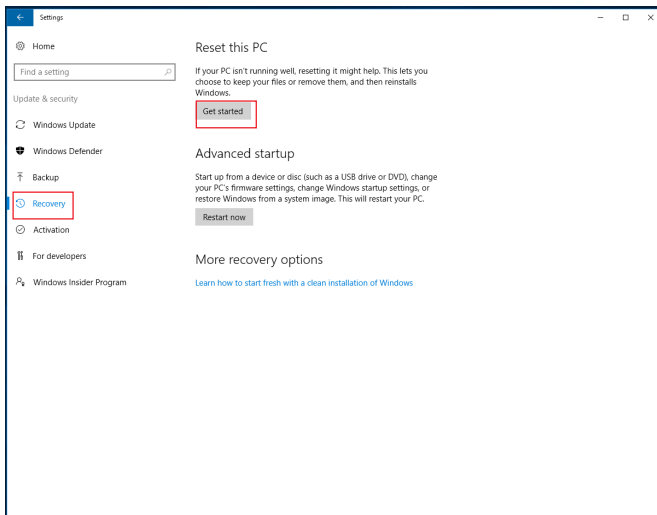
1. Select “Setting”



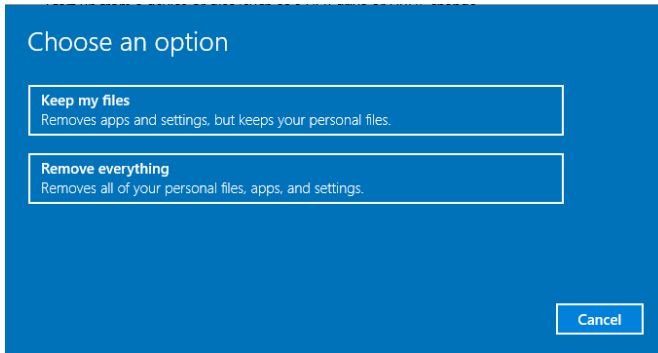
2. Select “Update & security”



3. Select “Recovery” → “Reset this PC – Get started”



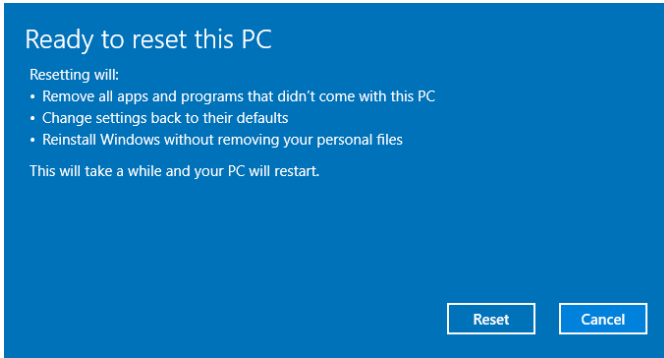
Once “Get started” was selected, there are 2 types of recovery mode will be presented.



[Keep my files]

Keep my files

- Reinstalls Windows 10 and keeps your personal files.
- Removes apps and drivers you installed.
- Removes changes you made to settings.
- Removes any apps your PC manufacturer installed. (If your PC came with Windows 10, apps from your PC manufacturer will be reinstalled.)

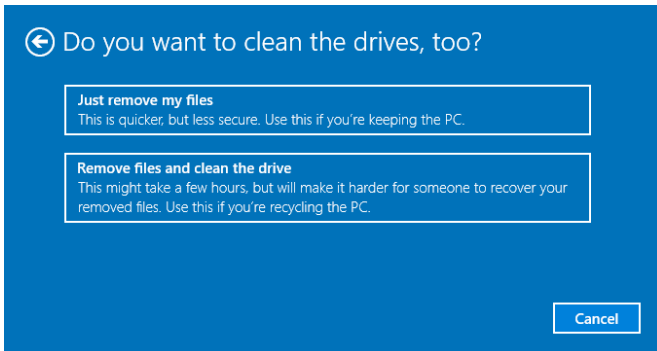


Click “Reset” and start the recovery process.

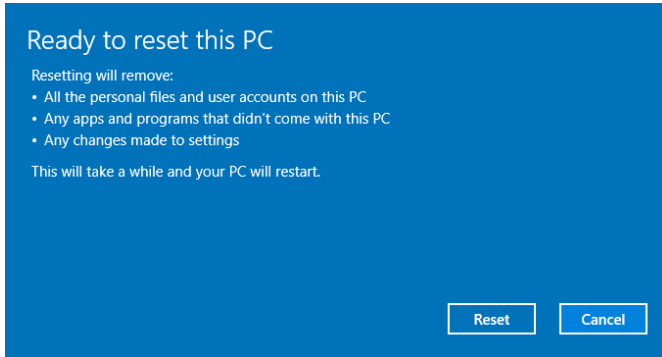
[Remove everything]

Remove everything

- Reinstalls Windows 10 and removes all your personal files.
- Removes apps and drivers you installed.
- Removes changes you made to settings.
- Removes any apps your PC manufacturer installed. (If your PC came with Windows 10, apps from your PC manufacturer will be reinstalled.)



[Remove everything – Just remove my files]
[Remove everything – Remove files and clean the drive]
Select “Reset” to start the recovery process.



Memo

Chapter 4

Trouble Shooting

Troubleshooting and problem solution

After assembling the PC for the first time you may experience some start up problems. Before calling for technical support or returning for warranty, this chapter may help to address some of the common questions using some basic troubleshooting tips.

a) Boot up failed.

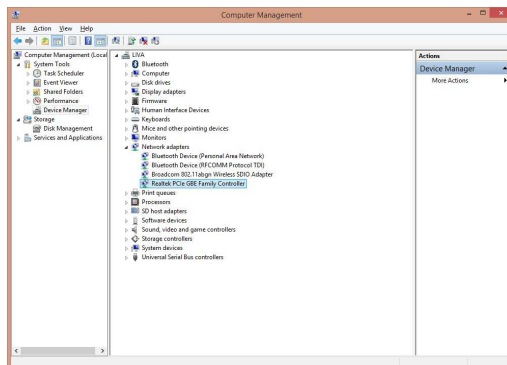
1. Use the specified adapter provided by Acer India.
2. Check whether the adapter has been plugged in.
3. Check the connection between adapter and the system.
4. Check that the power button can be pushed normally. If it is successfully power on, the green light from LED will show up.
5. If the boot up problem still exists after these checking steps, please turn to local dealer or repair center for further customer service.

b) Black screen or no image is displayed on the monitor.

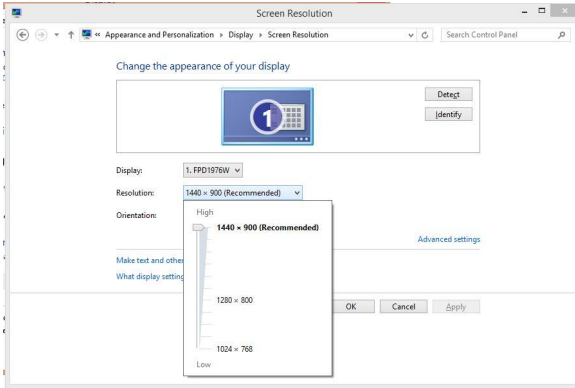
1. Check whether the monitor has been turned on or works normally on other system.
2. Check whether the system has been power on successfully.
3. Check the cable is securely inserted into rear IO ports(VGA/HDMI) and also at monitor side(VGA/HDMI).
4. If the display problem still exists after checking steps, please turn to local dealer or repair center for further customer service.

c) Display Error

1. Check whether the driver is correctly installed in "Device Manager".If there is yellow mark or unknown devices message shown in the list, please reinstall the driver.



2. Adjust the screen to the best resolution to get better using experience.



d) Wire LAN connecting failed.

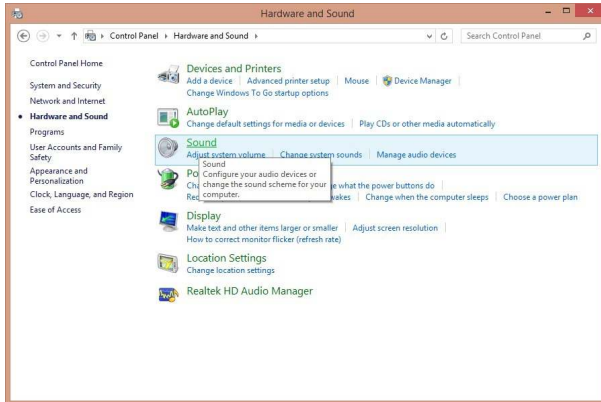
1. Check whether the LAN driver is correctly installed in “Device Manager”.If there is yellow mark or unknown devices message shown in the list, please reinstall the driver.
2. Ensure the LAN cable is securely inserted to the RJ45 port and the LED light flashes normally.
3. Check IP address.
4. If the LAN connection problem still exists after these checking steps, please turn to local dealer or repair center for further customer service.

e) Wireless LAN connecting failed

1. Check whether the WLAN card driver is correctly installed in “Device Manager”. If there is yellow mark or unknown devices message shown in the list, please re-install the driver.
2. Check the WIFI in your working area is well functional and has good reception.
3. If the WIFI connection problem still exists after these checking steps, please turn to local dealer or repair center for further customer service.

f) No sound from audio combo jack

1. Check whether the audio driver is correctly installed in “Device Manager”.If there is yellow mark or unknown devices message shown in the list, please re-install the driver.
2. After connecting the speaker or header phone, adjust audio setting in Control panel> Hardware and sound.



Note: Due to chipset limitation, the mic function of audio codec AL282 can be only compatibel to iPhone devices.

3. If the audio problem still exists after these checking steps, please turn to local dealer or repair center for further customer service.

Memo