

Antenna Measurement Report for XN6-140P XD

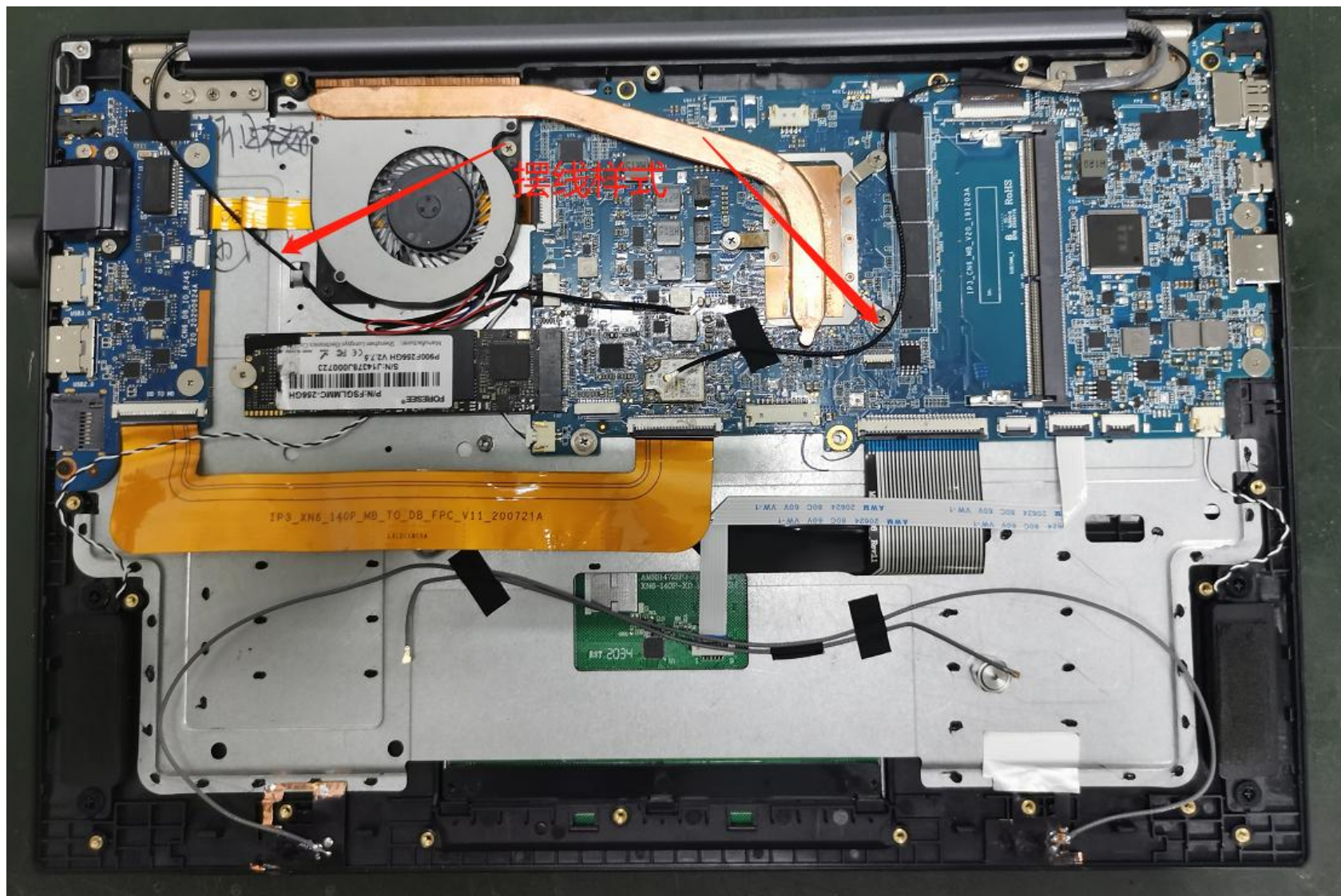
20200829

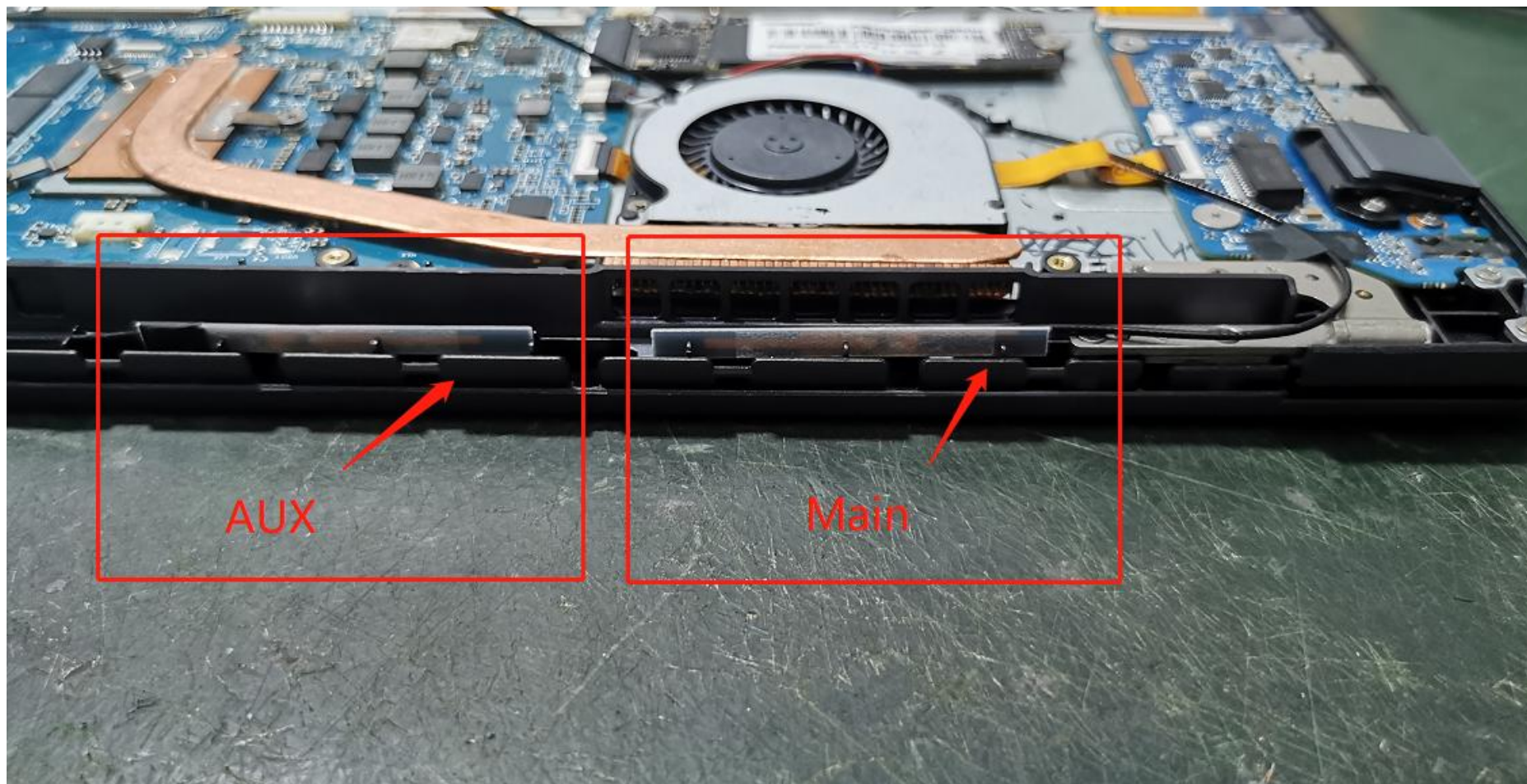
目 录

- Antenna Introduction
- Specification
- Test equipment
- S-parameter test results
- testing environment
- Measurement setting
- Gain & Patterns test results 3D patterns
- Antenna test data
- Antenna Matching
- 总结


Antenna Introduction





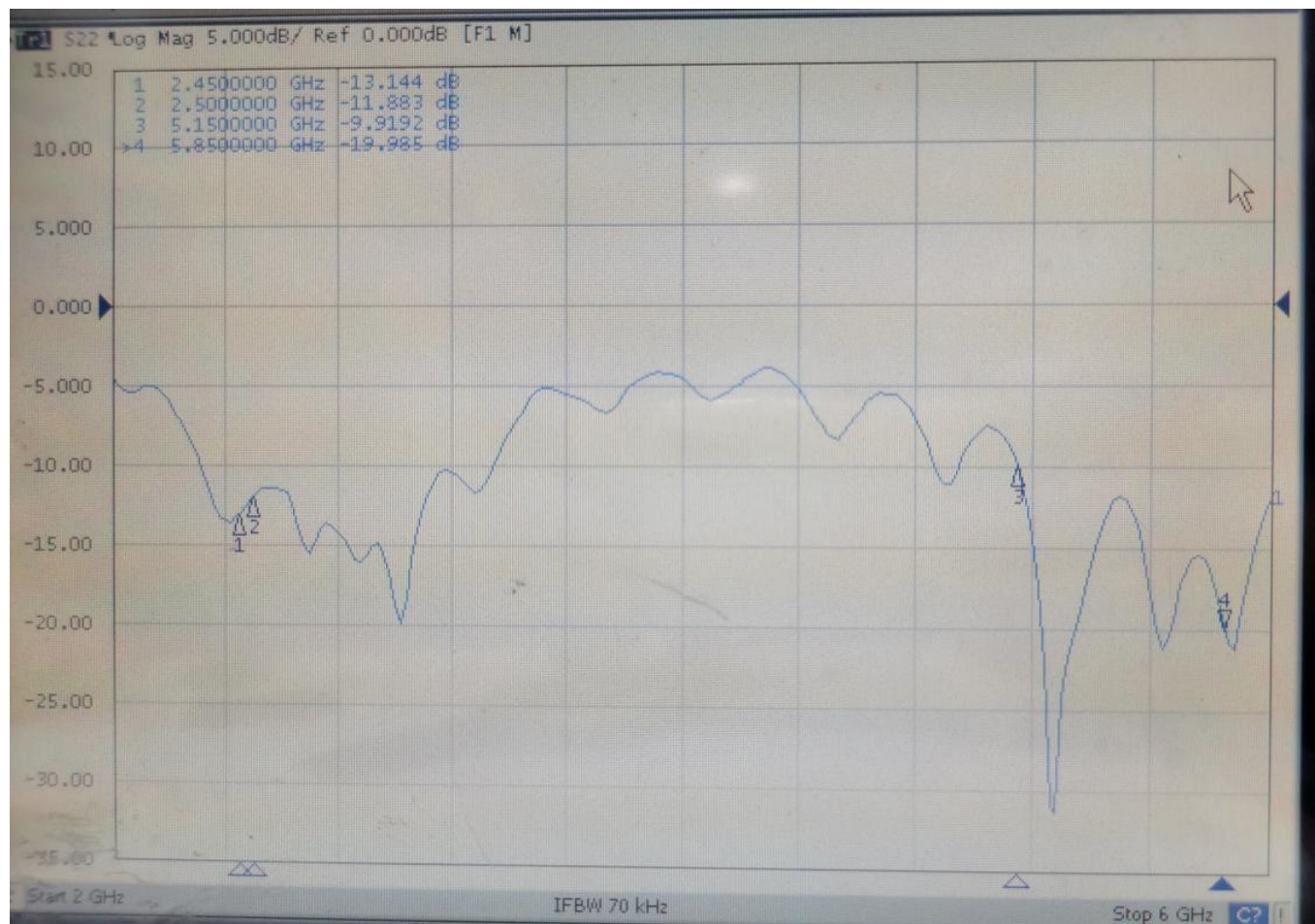


Test equipment

测试项目	驻波比（回波损耗） 隔离度
测试环境与 设备	矢量网络分析仪 

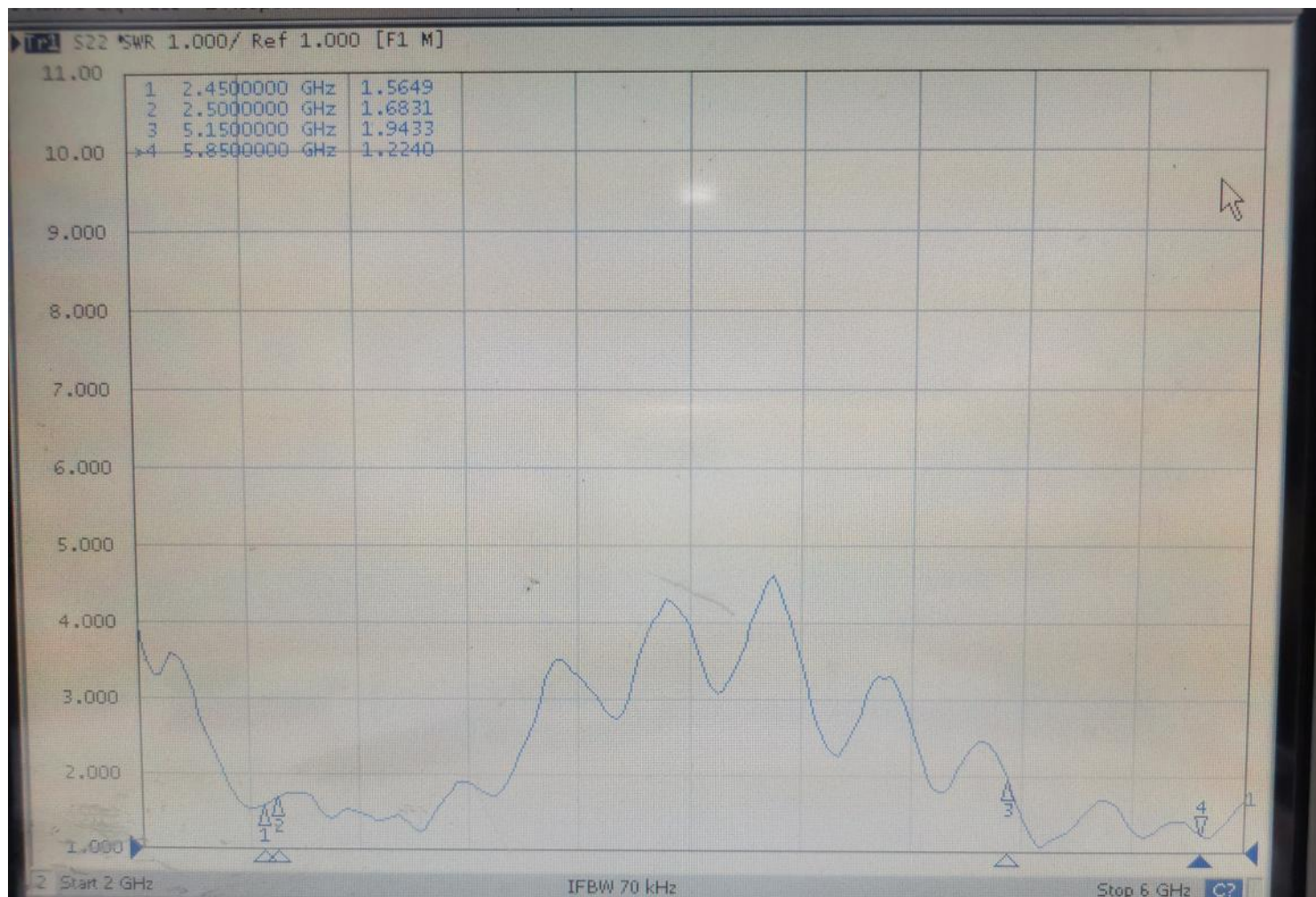
Main summary

天线的回波损耗满足指标要求;



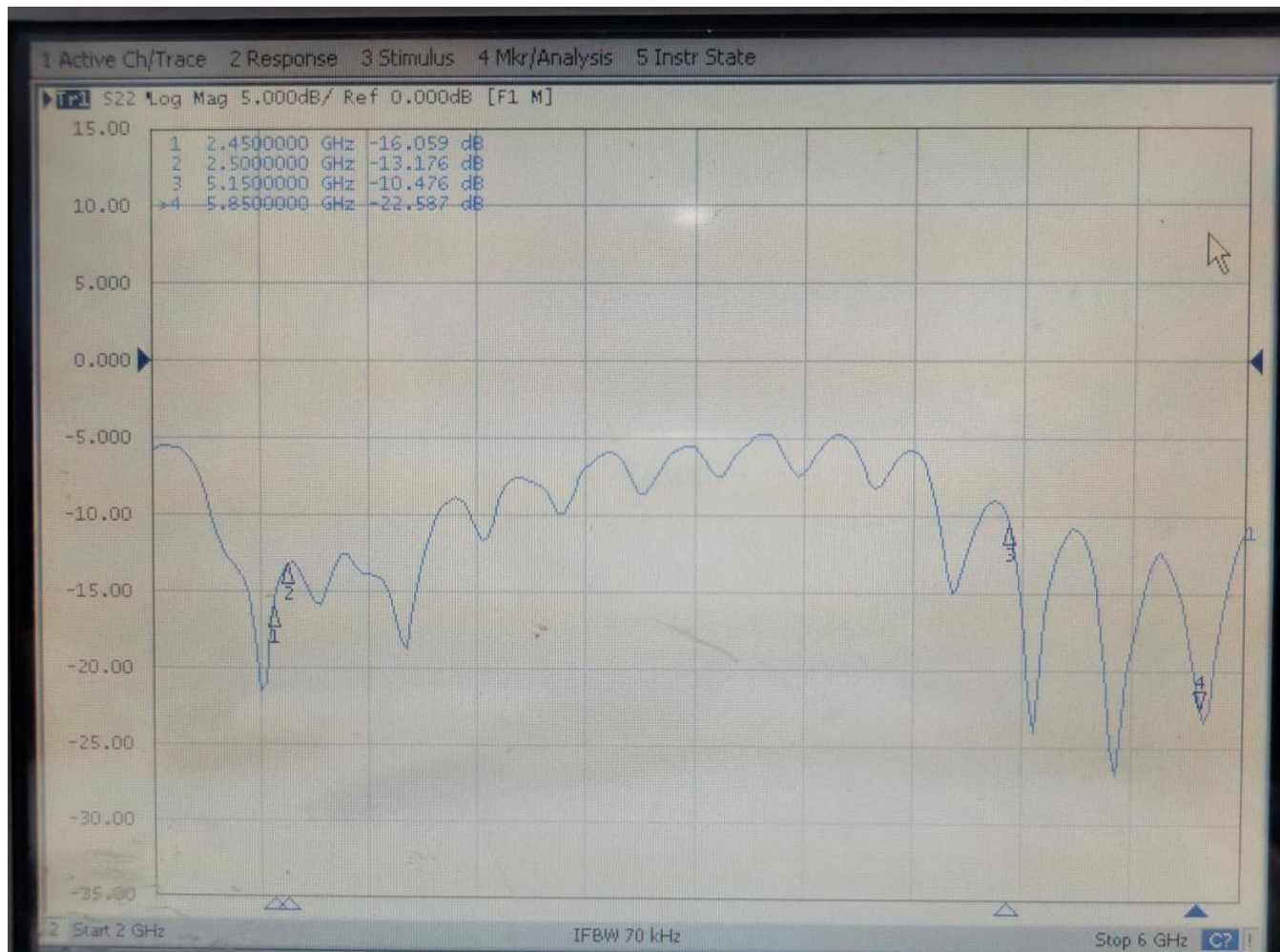
Main S-parameter test results

天线的回波损耗满足指标要求;



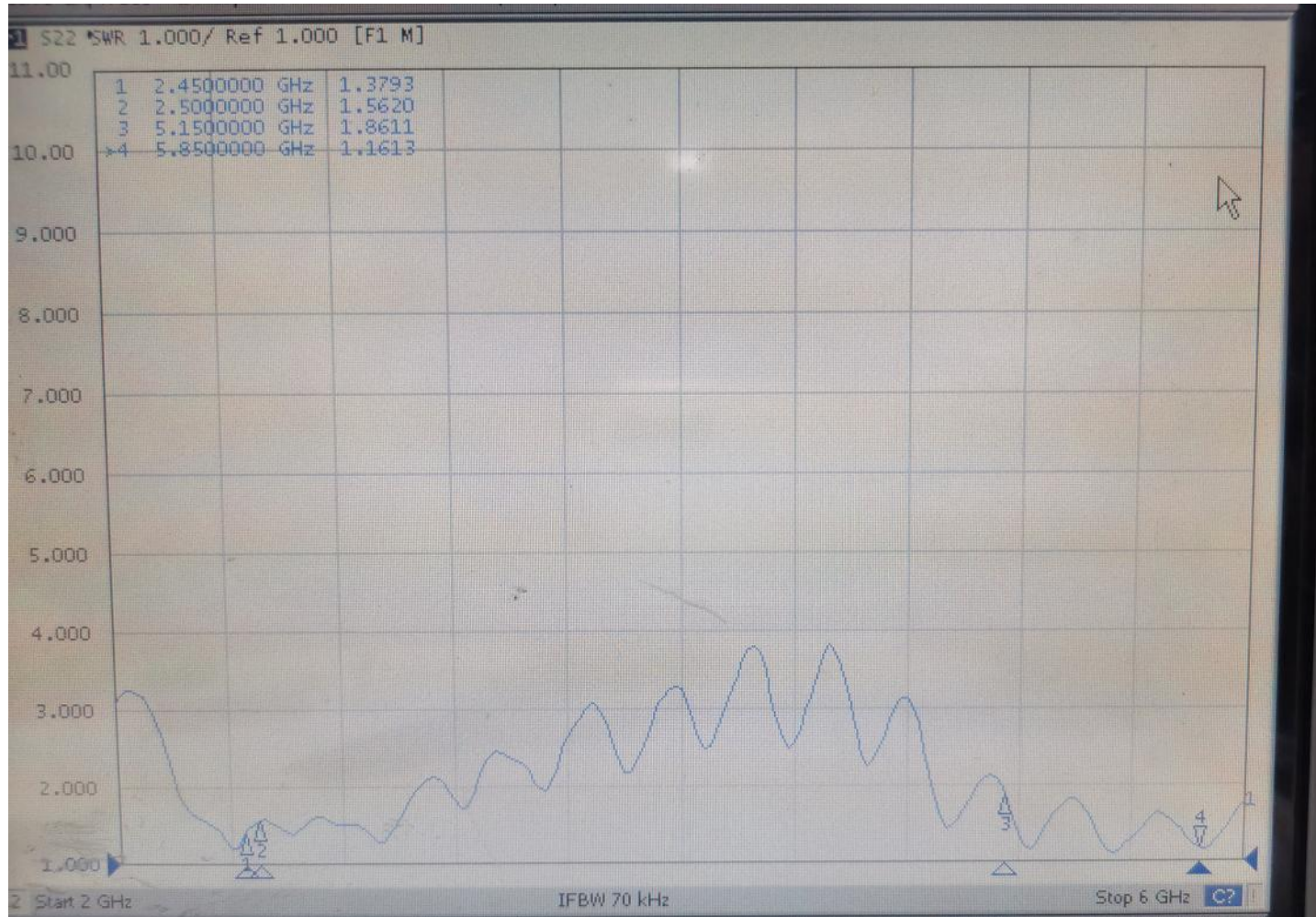
Aux summary

天线的回波损耗满足指标要求；



Aux S-parameter test results

天线的回波损耗满足指标要求；



Main S-parameter test results

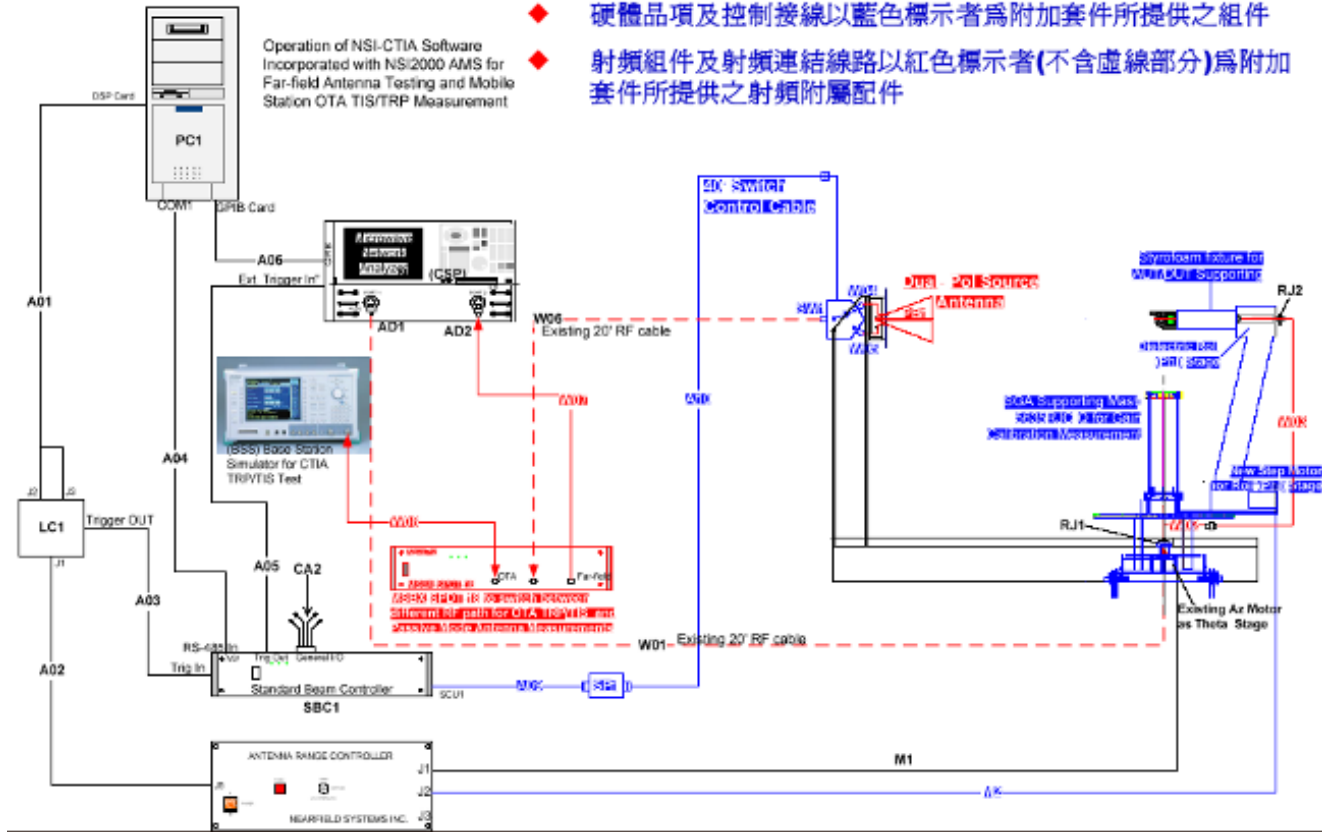
测试项目	测试对象	指标要求	测试频点 (GHz)			
			2450	2500	5150	5850
回波损耗 (dB)		≥10	13.21	11.82	9.91	19.85

Aux S-parameter test results

测试项目	测试对象	指标要求	测试频点 (GHz)			
			2450	2500	5150	5850
回波损耗 (dB)		≥10	16.52	13.17	10.47	22.54

Gain & Patterns test results

testing environment



WIFI antenna gain Efficiency

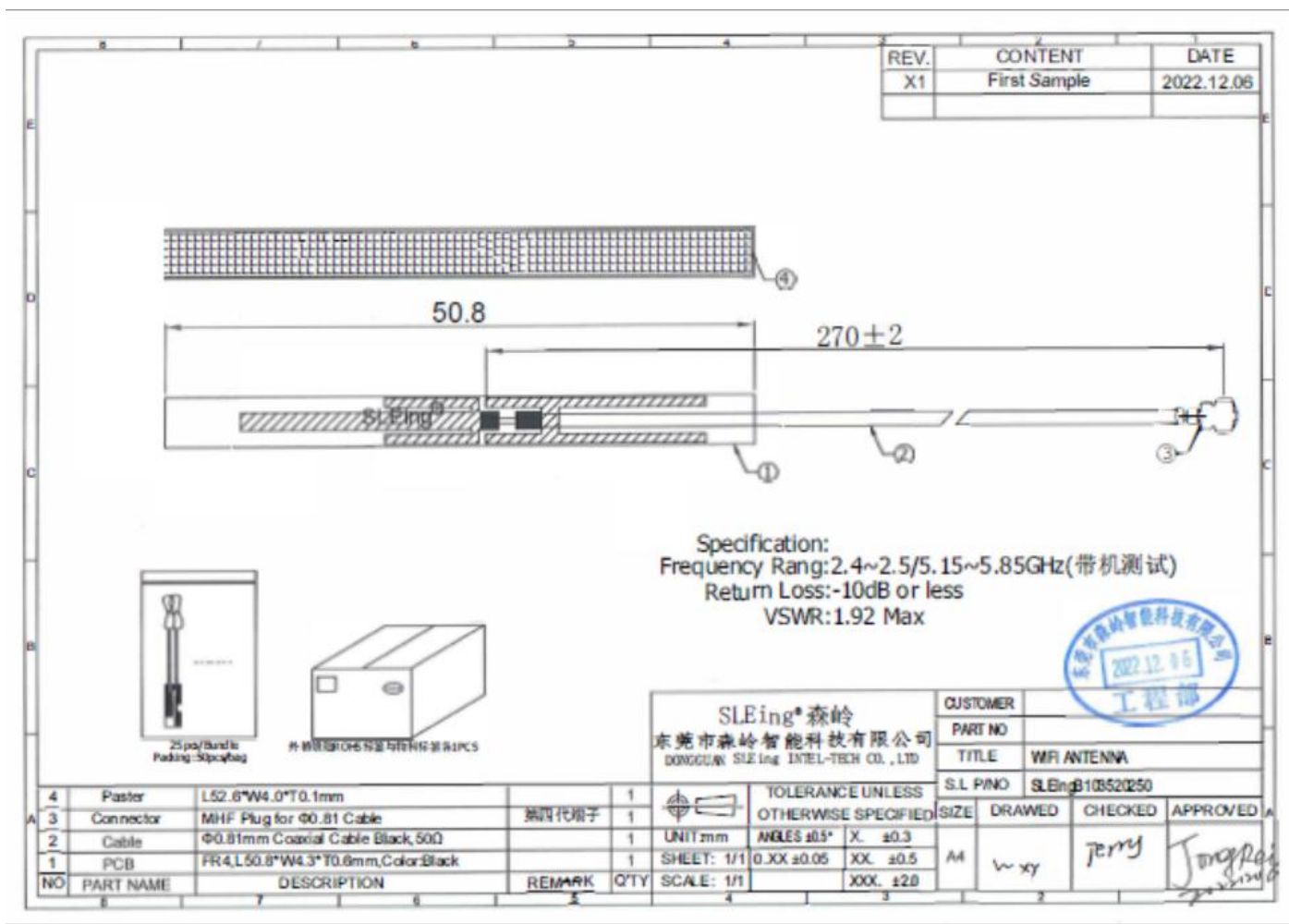
Test Point ID	Freq. (MHz)	Gain (dBi)	Efficiency (%)
1	2400.0	0.80	35.6%
2	2410.0	1.28	38.2%
3	2420.0	1.44	41.1%
4	2430.0	1.71	44.4%
5	2440.0	2.47	43.6%
6	2450.0	1.98	46.4%
7	2460.0	1.76	43.2%
8	2470.0	1.68	38.4%
9	2480.0	0.81	34.4%
10	2490.0	0.70	42.8%
11	2500.0	0.42	37.3%
12	5150.00	1.25	42.4%
13	5250.00	1.30	47.2%
14	5350.00	1.70	50.5%
15	5450.00	2.46	52.3%
16	5550.00	2.34	50.5%
17	5650.00	2.01	48.0%
18	5750.00	1.73	46.1%
19	5850.00	1.54	45.5%
20			

Main

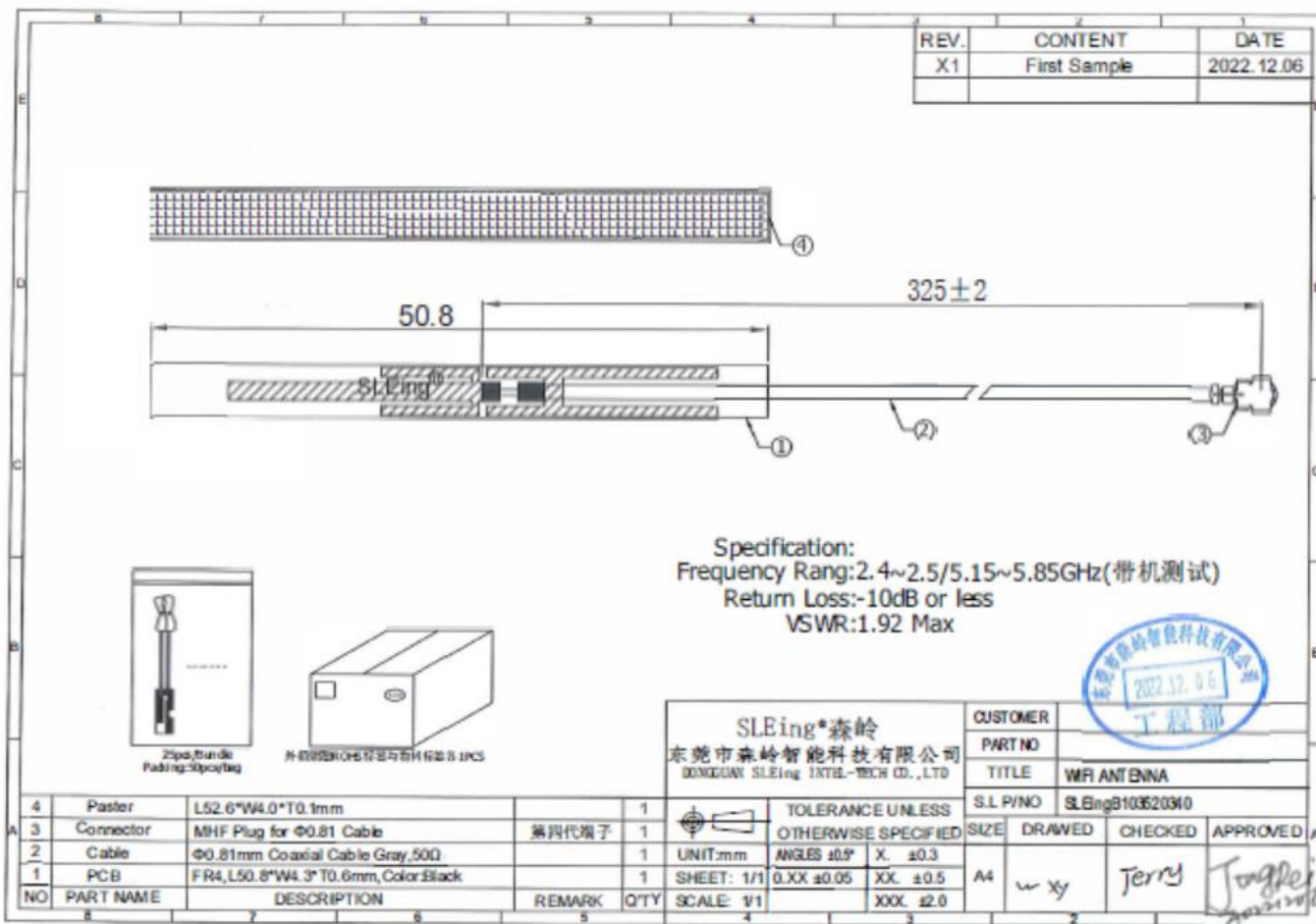
Test Point ID	Freq. (MHz)	Gain (dBi)	Efficiency (%)
21	2400.0	0.49	32.1%
22	2410.0	0.57	35.3%
23	2420.0	1.22	37.2%
24	2430.0	1.67	39.4%
25	2440.0	1.95	41.6%
26	2450.0	1.79	42.4%
27	2460.0	2.05	40.4%
28	2470.0	1.33	38.5%
29	2480.0	1.28	36.3%
30	2490.0	1.29	34.3%
31	2500.0	1.57	31.4%
12	5150.00	0.96	35.5%
13	5250.00	0.37	38.4%
14	5350.00	1.47	46.0%
15	5450.00	1.86	51.8%
16	5550.00	1.79	50.3%
17	5650.00	0.98	48.4%
18	5750.00	0.69	45.2%
19	5850.00	0.52	43.9%
20			

Aux

天线尺寸: Main

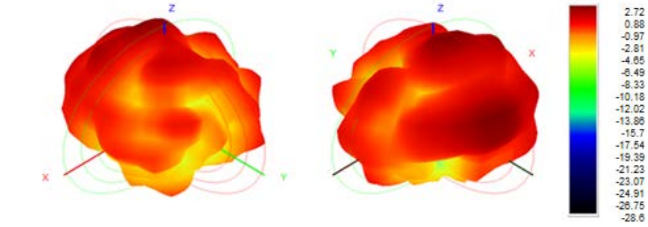


天线尺寸: Aux



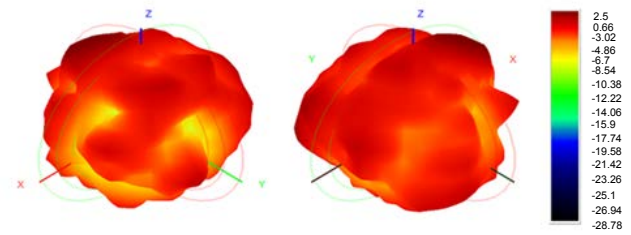
WiFi Main

2440MHz

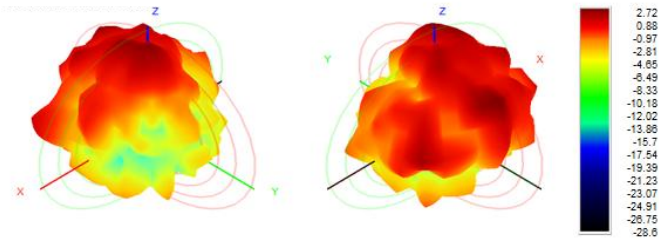


WiFi Aux

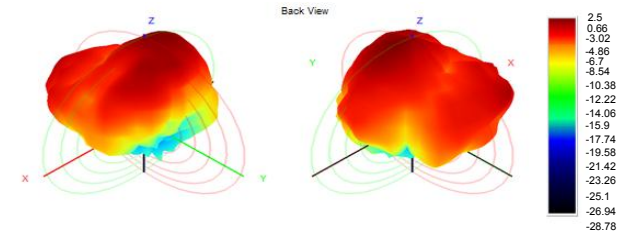
2460MHz



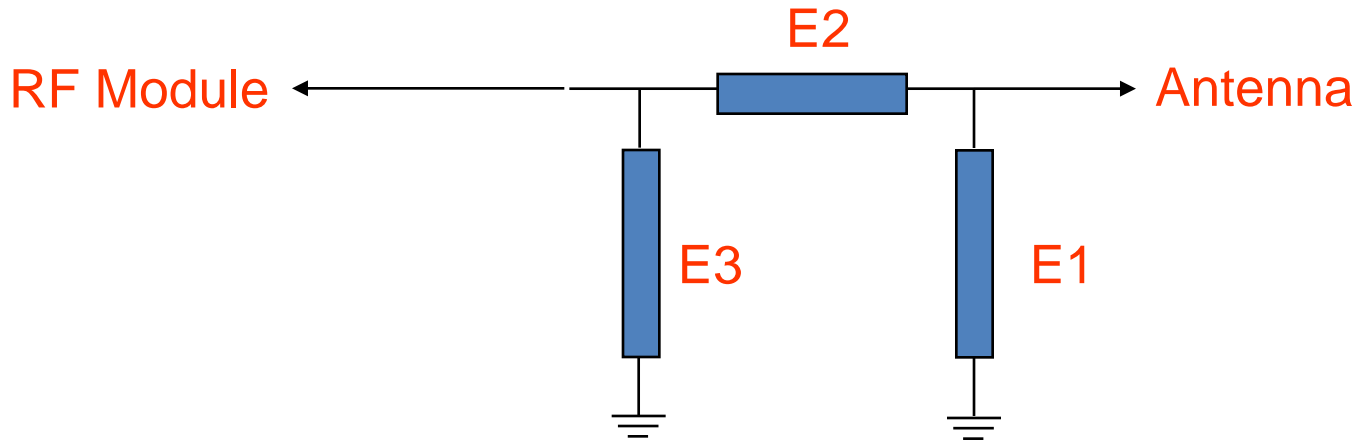
5450MHz



5450MHz



Antenna Matching



Element	Value
E1(0402)	NC
E2(0402)	0 OHM
E3(0402)	NC

匹配未做更改

SLEing®

森岭 智能科技

东莞市森岭智能科技有限公司

Dongguan SLEing Intel-tech Co., Ltd

Thank you for your guidance

DONGGUAN SENLING INDUSTRIAL CO.LTD