

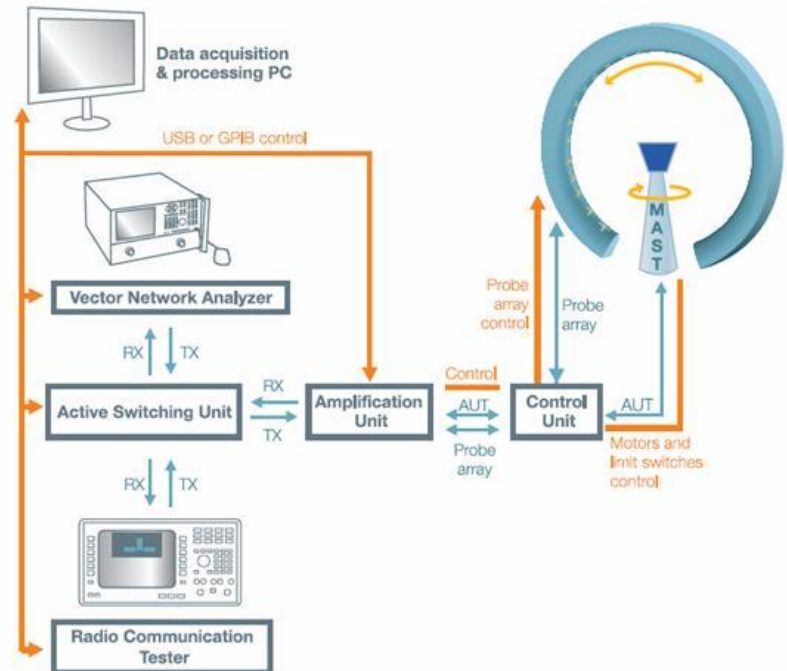
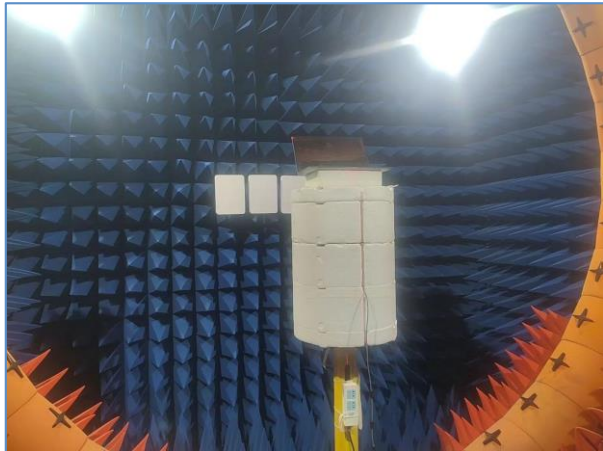
# Antenna Measurement Report

Project name :	英众笔记本DN21C-140P6-SCD-N02报告
Type of antenna :	WIFI2.4/5G
Redact :	
Approver :	
Version number :	V1.0
Date :	20240705

# 1. Test items and equipment

## Passive test item

1. 整机辐射功率	Microwave chamber
2. 整机数据	网分 E5071B CMW500



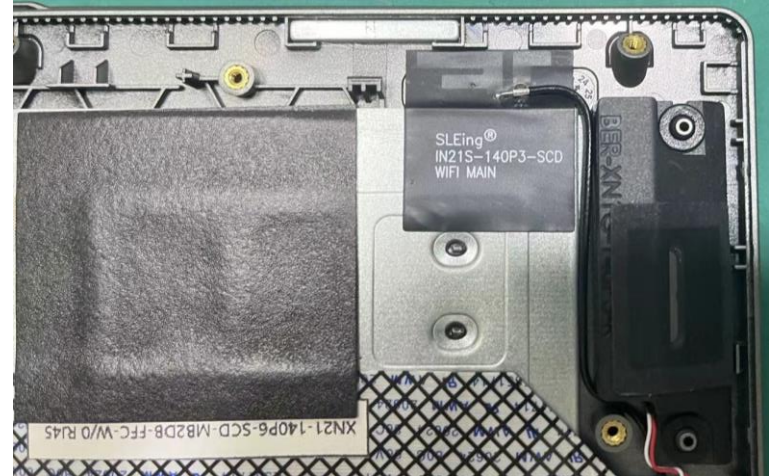
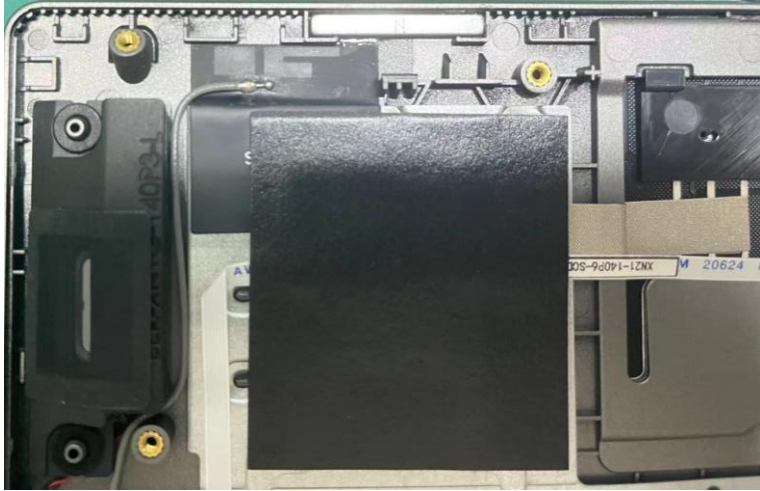
## 2. Product information

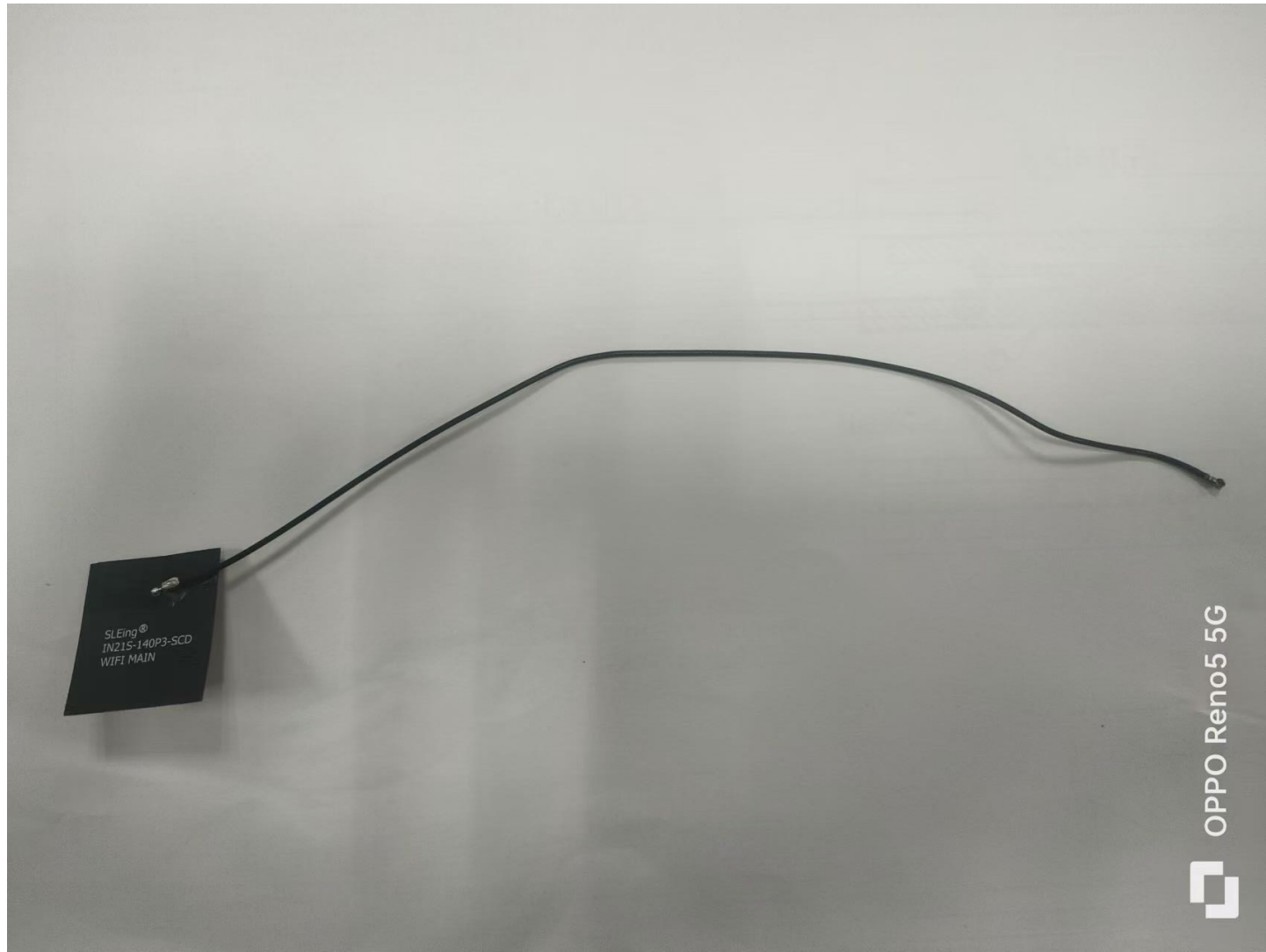
产品名称: 英众笔记本DN21C-140P6-SCD-N02

测试天线: WIFI2.4/5G



### 3. Antenna assembly instructions







<b>WLAN Antenna Performance</b>					
WLAN Whole Band TRP (dBm) _____					
WLAN Whole Band TIS (dBm) _____					
		Channel No.	Freq. (MHz)	TRP (dBm)	TIS (dBm)
Phone Tx (Uplink Path)	<u>1</u>	1	--	11.63	--
	<u>2</u>	6	--	12.74	--
	<u>3</u>	11	--	12.18	--
	<u>4</u>	--	--	--	--
	<u>5</u>	--	--	--	--
Phone Rx (Downlink Path)	<u>1</u>	1	--	--	-78.96
	<u>2</u>	6	--	--	-79.22
	<u>3</u>	11	--	--	-79.86
	<u>4</u>	--	--	--	--
	<u>5</u>	--	--	--	--

AX101 11B有源数据

<b>WLAN Antenna Performance</b>					
WLAN Whole Band TRP (dBm) _____					
WLAN Whole Band TIS (dBm) _____					
		Channel No.	Freq. (MHz)	TRP (dBm)	TIS (dBm)
Phone Tx (Uplink Path)	<u>1</u>	36	--	12.89	--
	<u>2</u>	149	--	13.22	--
	<u>3</u>	165	--	12.48	--
	<u>4</u>	--	--	--	--
	<u>5</u>	--	--	--	--
Phone Rx (Downlink Path)	<u>1</u>	36	--	--	-68.95
	<u>2</u>	149	--	--	-69.33
	<u>3</u>	165	--	--	-70.48
	<u>4</u>	--	--	--	--
	<u>5</u>	--	--	--	--

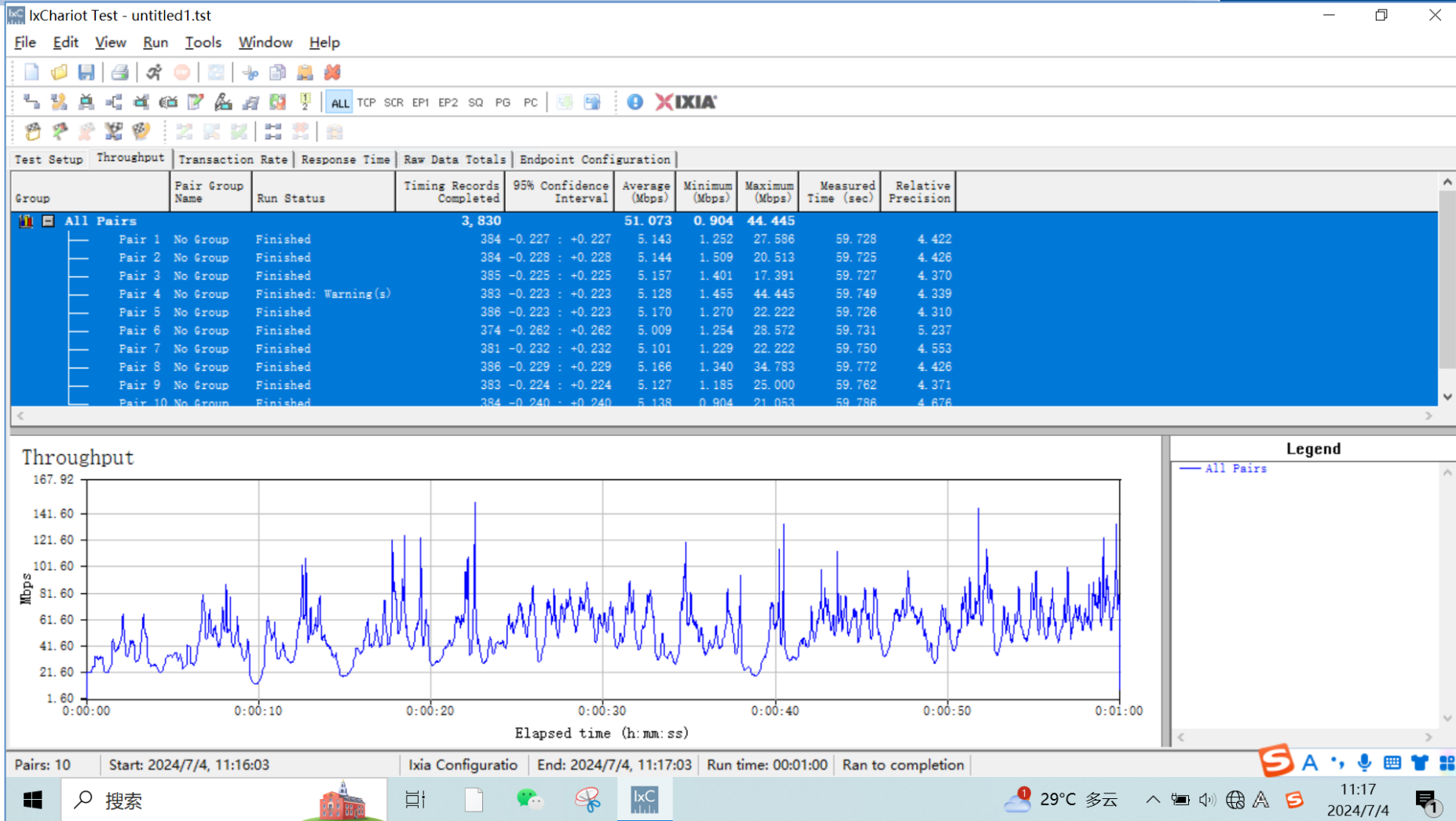
AX101 11A有源数据



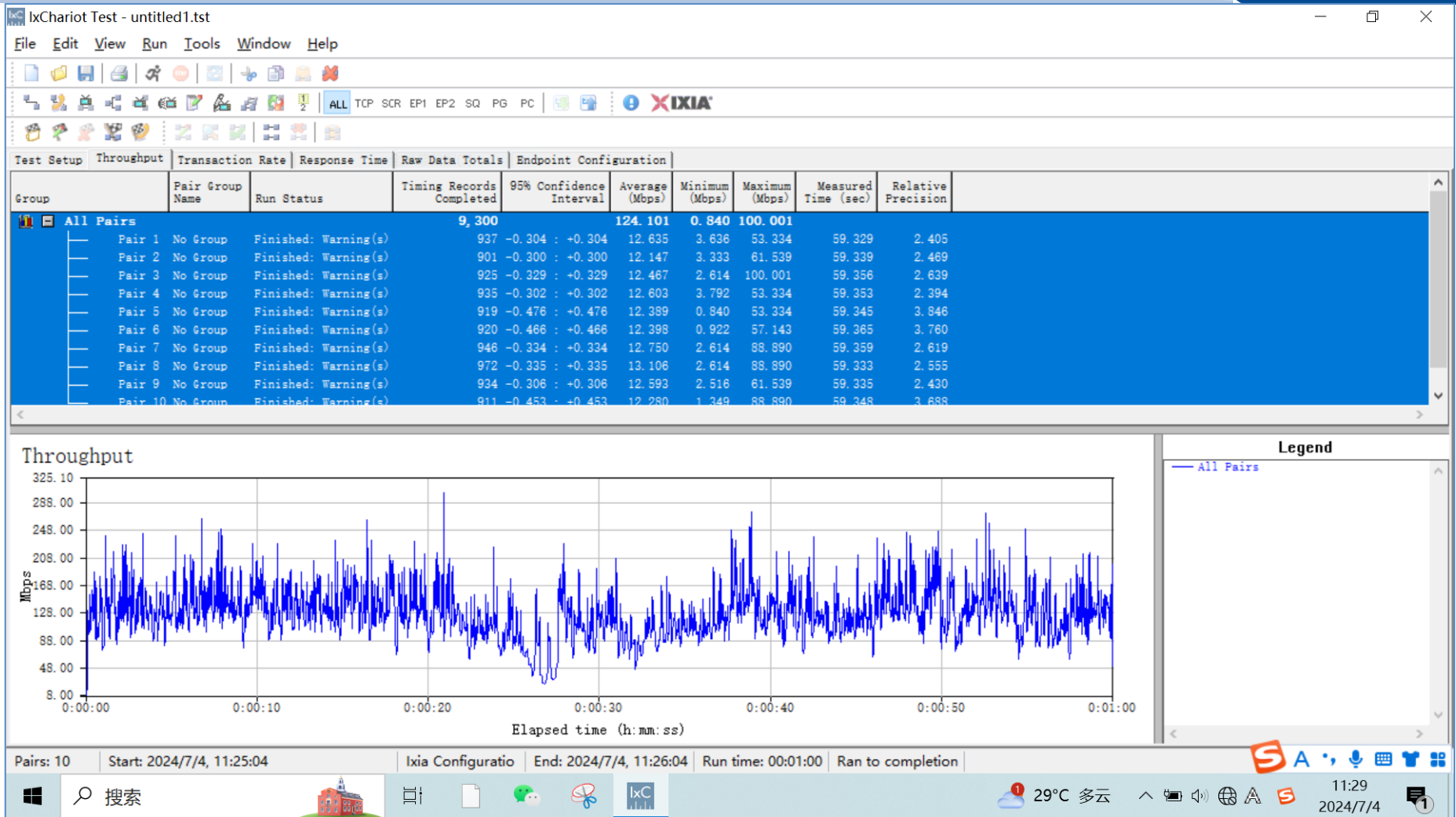


Throughput test environment

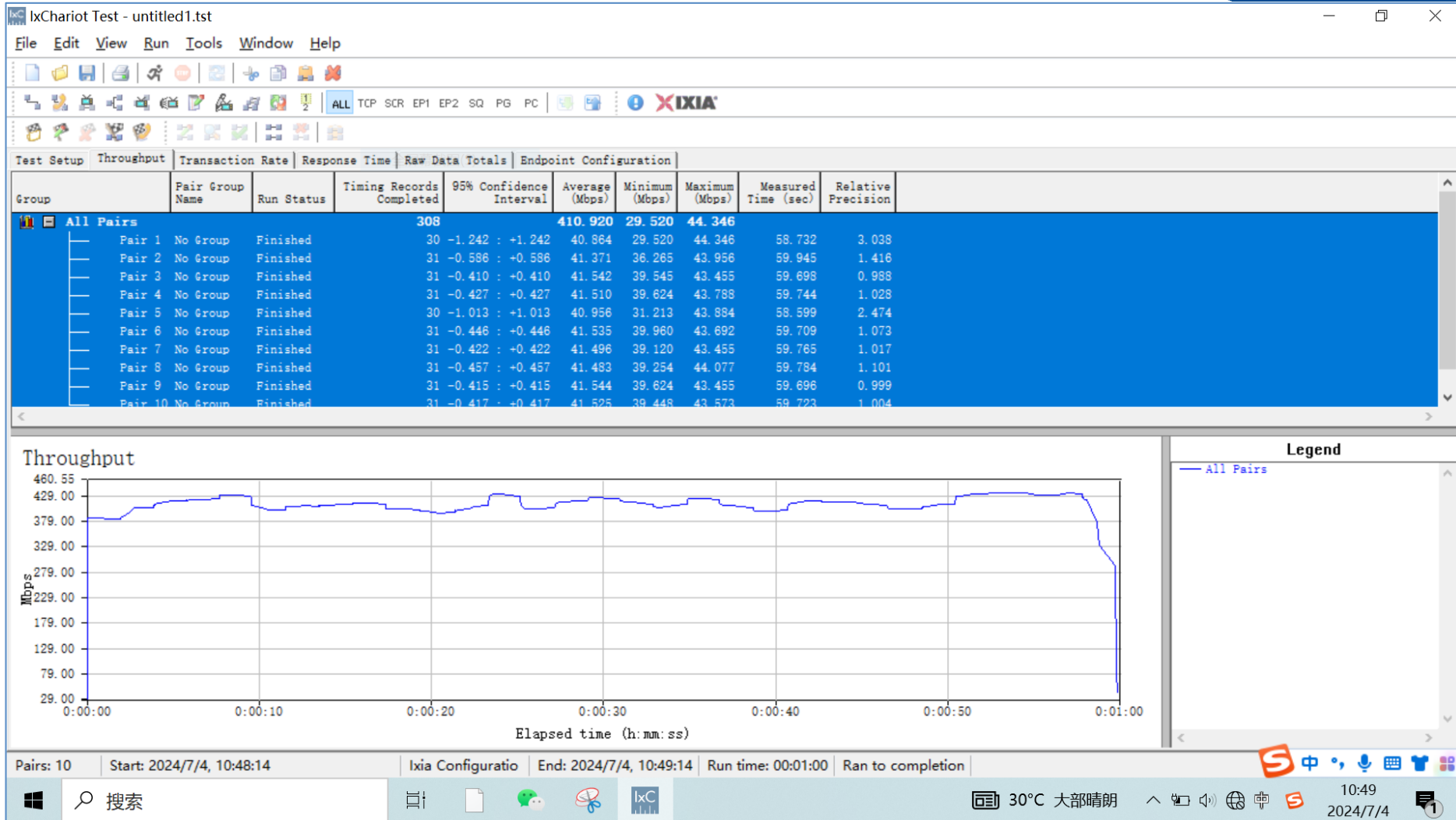




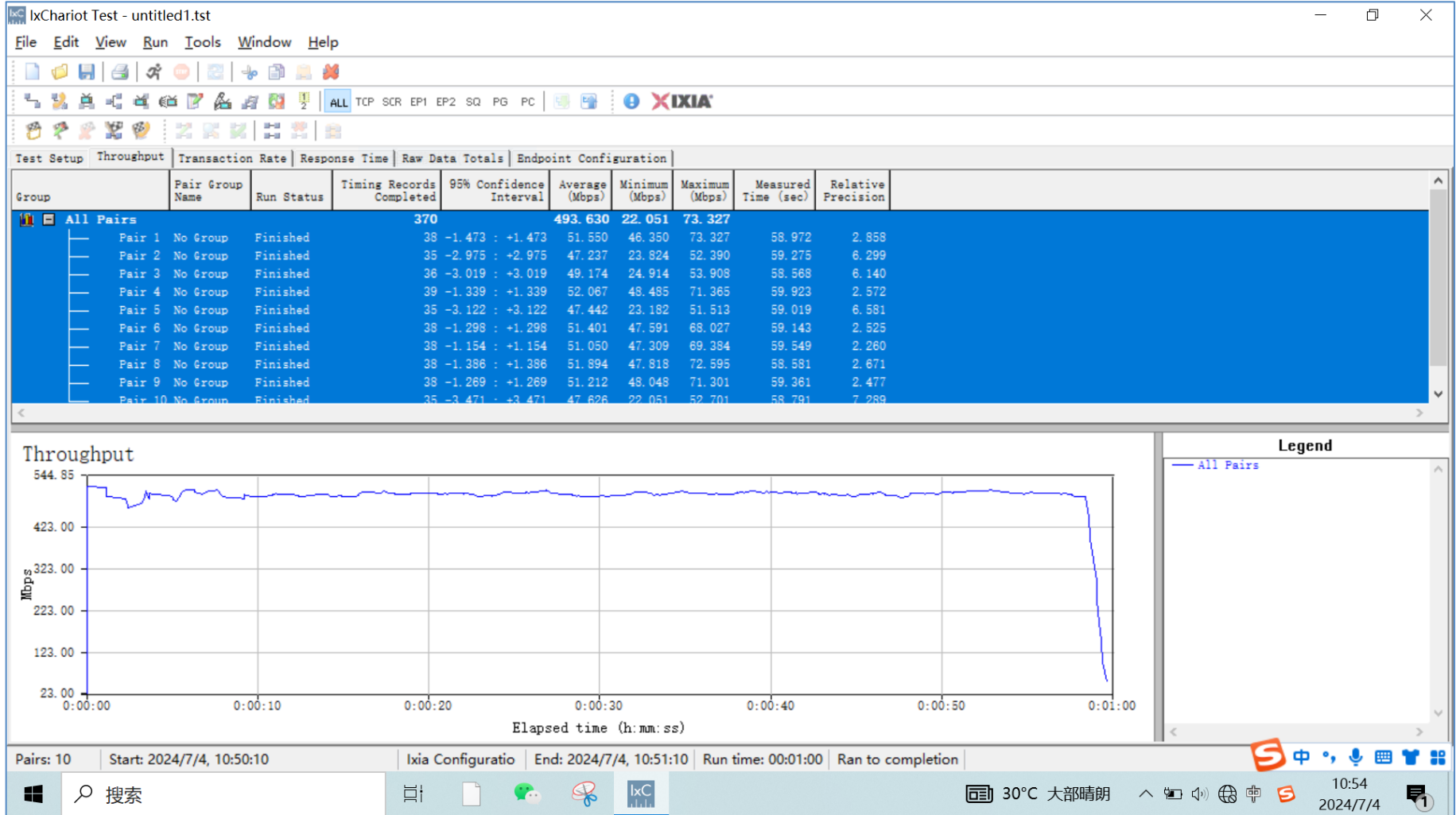
AX101 WiFi module throughput 2.4G transmit data



AX101 WiFi module throughput 2.4G received data



## AX101 WiFi module throughput 5G transmit data



AX101 WiFi module throughput 5G receiving data

# 测试效率

## Test Efficiency

Frequency ID	1	2	3	4	5	6	7	8	9	10	11
Frequency (MHz)	2400	2410	2420	2430	2440	2450	2460	2470	2480	2490	2500
Efficiency (dBi)	-3.75	-3.50	-3.44	-3.36	-3.11	-3.03	-3.00	-2.96	-2.78	-2.69	-2.46
Gain (dBi)	2.52	2.51	2.60	2.69	3.35	3.61	3.36	3.40	3.32	3.77	4.09
Efficiency (%)	42.16	44.71	45.30	46.09	48.86	49.75	50.10	50.55	52.72	53.77	56.70

12	13	14	15	16	17	18	19	20	21	22	23	24	25	26
5150	5200	5250	5300	5350	5400	5450	5500	5550	5600	5650	5700	5750	5800	5850
-2.98	-3.28	-3.30	-3.36	-3.14	-2.53	-2.83	-3.38	-3.92	-4.04	-3.36	-3.54	-3.78	-3.81	-3.50
3.68	3.89	3.94	4.51	5.10	5.61	4.25	3.92	3.75	3.99	4.71	4.70	4.77	4.75	5.17
50.30	47.00	46.79	46.15	48.58	55.87	52.06	45.87	40.53	39.42	46.11	44.21	41.84	41.61	44.66

天线方向图<sup>3</sup>

