



SATIMO 225, rue Pierre Rivoalon 29200 Brest - France  
Tel:+33 (0)2 98 05 13 34; Fax: +33 (0)2 98 05 53 87; www.satimo.com



## **Annex B: Measurement Results**

**Tested Model : Acer One 8 T9-422L**

**Report Number:**

**WSCT-A2LA-R&E230300002A-SAR**

# MEASUREMENT 1

Type: Phone measurement (Complete)

Date of measurement: 28/3/2023

Measurement duration: 8 minutes 10 seconds

## A. Experimental conditions.

|                        |  |
|------------------------|--|
| <u>Area Scan</u>       | <u>dx=15mm dy=15mm</u>                               |
| <u>ZoomScan</u>        | <u>5x5x7,dx=8mm dy=8mm</u><br><u>dz=5mm,Complete</u> |
| <u>Phantom</u>         | <u>Left head</u>                                     |
| <u>Device Position</u> | <u>Cheek</u>   |
| <u>Band</u>            | <u>IEEE 802.11b ISM</u>                              |
| <u>Channels</u>        | <u>Middle</u>  |
| <u>Signal</u>          | <u>IEEE802.b (Crest factor: 1.0)</u>                 |

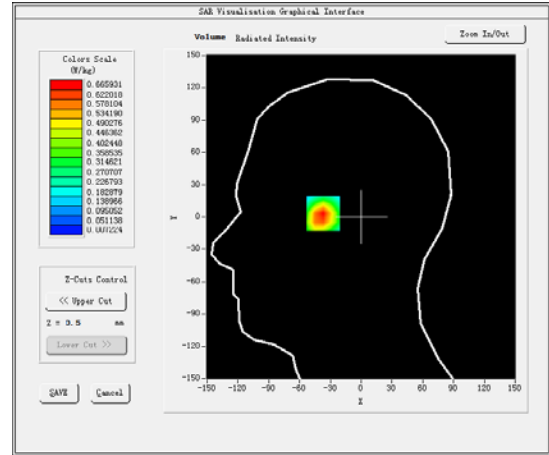
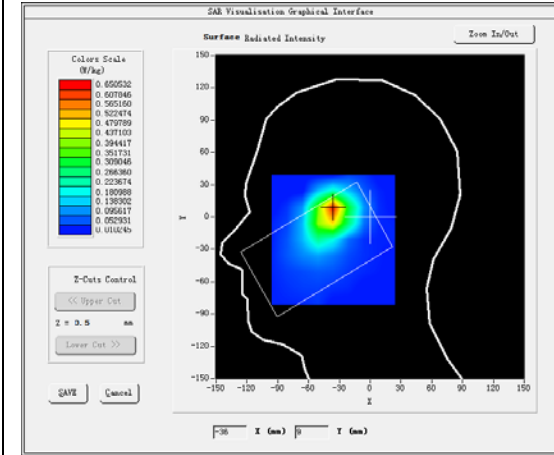
## B. SAR Measurement Results

Middle Band SAR (Channel 6):

|   |             |
|---|-------------|
| <b>Frequency (MHz)</b>                        | 2437.000000 |
| <b>Relative permittivity (real part)</b>      | 40.745499   |
| <b>Relative permittivity (imaginary part)</b> | 13.560400   |
| <b>Conductivity (S/m)</b>                     | 1.839694    |
| <b>Variation (%)</b>                          | 0.225000    |

### SURFACE SAR

### VOLUME SAR

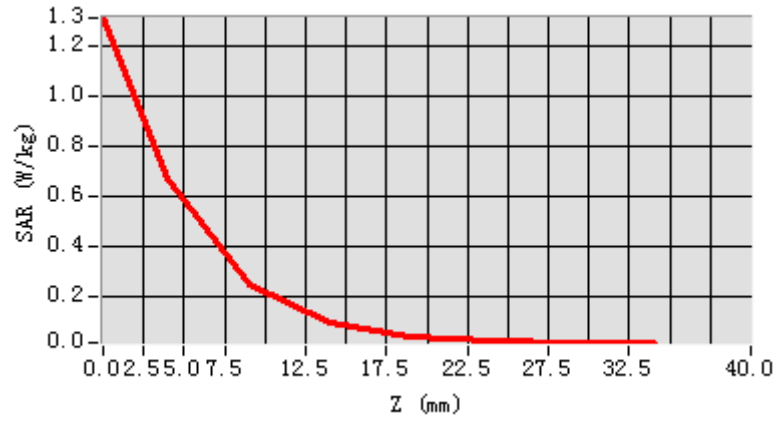


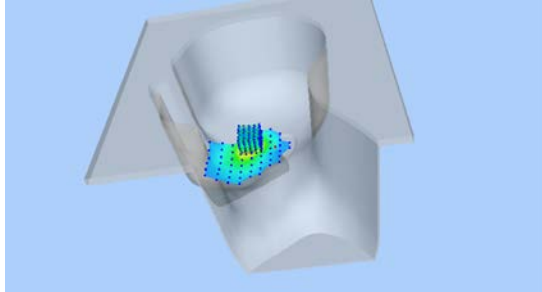
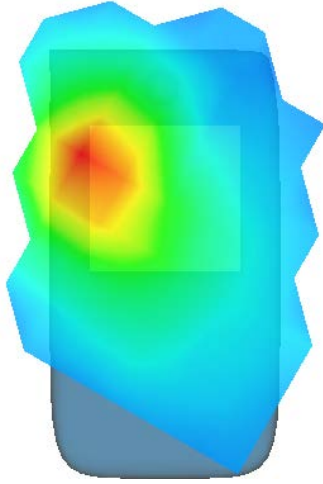
**Maximum location: X=-37.00, Y=7.00**

**SAR Peak: 1.29 W/kg**

|                       |          |
|-----------------------|----------|
| <b>SAR 10g (W/Kg)</b> | 0.169110 |
| <b>SAR 1g (W/Kg)</b>  | 0.356000 |

|            |        |        |        |        |        |        |        |
|------------|--------|--------|--------|--------|--------|--------|--------|
| Z (mm)     | 0.00   | 4.00   | 9.00   | 14.00  | 19.00  | 24.00  | 29.00  |
| SAR (W/Kg) | 1.3081 | 0.6659 | 0.2410 | 0.0930 | 0.0380 | 0.0183 | 0.0152 |



| 3D screen shot  | Hot spot position  |
|---|--|
|  |  |

## MEASUREMENT 2

Rear-side-middle

Type: Phone measurement (Complete)

Date of measurement: 28/3/2023

Measurement duration: 11 minutes 22 seconds

### A. Experimental conditions.

|                        |  |
|------------------------|--|
| <u>Area Scan</u>       | <u>dx=15mm dy=15mm</u>                               |
| <u>ZoomScan</u>        | <u>5x5x7,dx=8mm dy=8mm</u><br><u>dz=5mm,Complete</u> |
| <u>Phantom</u>         | <u>Validation plane</u>                              |
| <u>Device Position</u> | <u>Body</u>  |
| <u>Band</u>            | <u>IEEE 802.11b ISM</u>                              |
| <u>Channels</u>        | <u>Middle</u>  |
| <u>Signal</u>          | <u>IEEE802.b (Crest factor: 1.0)</u>                 |

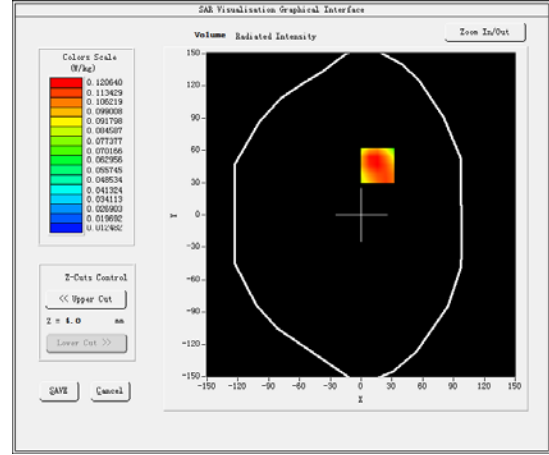
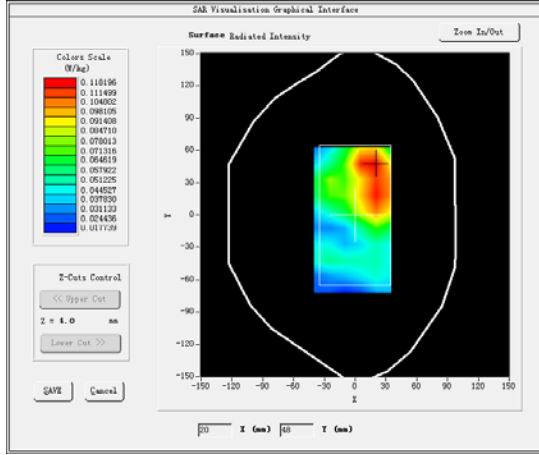
### B. SAR Measurement Results

Middle Band SAR (Channel 6):

|   |             |
|---|-------------|
| <b>Frequency (MHz)</b>                        | 2437.000000 |
| <b>Relative permittivity (real part)</b>      | 52.566399   |
| <b>Relative permittivity (imaginary part)</b> | 14.468200   |
| <b>Conductivity (S/m)</b>                     | 1.962852    |
| <b>Variation (%)</b>                          | 0.198000    |

### SURFACE SAR

### VOLUME SAR

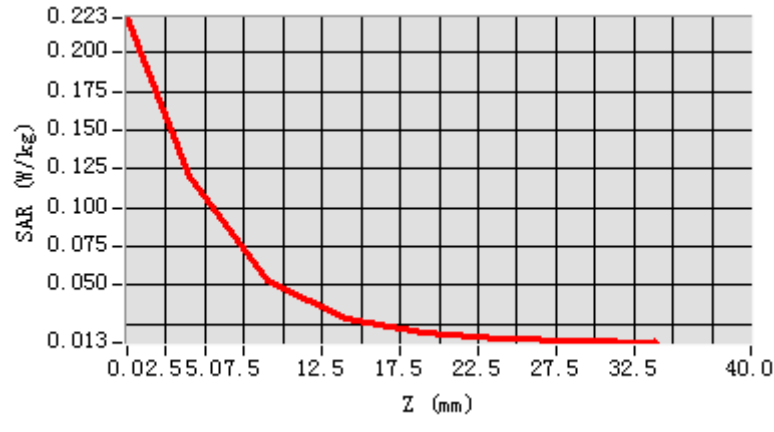


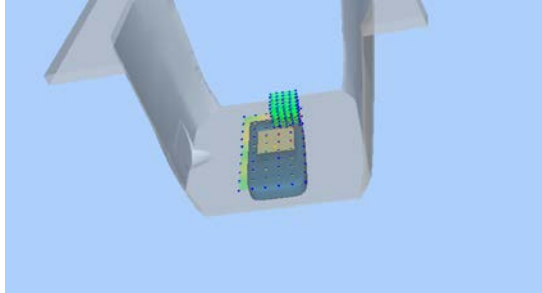
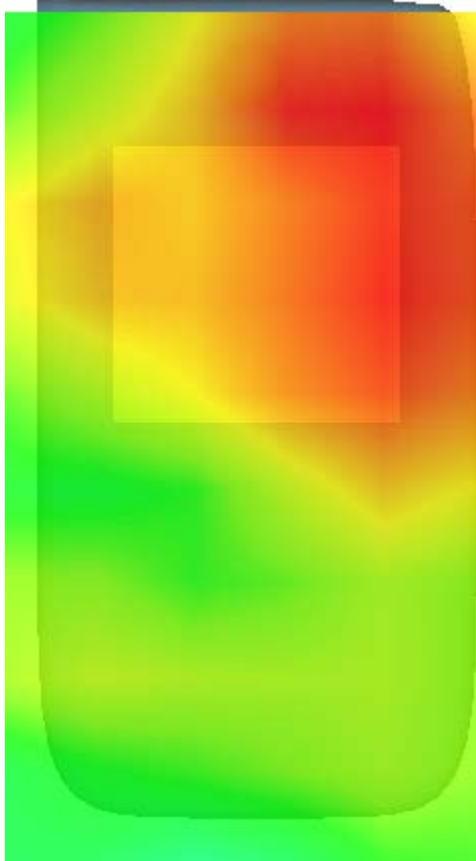
**Maximum location: X= 16.00, Y=46.00**

**SAR Peak: 0.23 W/kg**

|                       |          |
|-----------------------|----------|
| <b>SAR 10g (W/Kg)</b> | 0.168220 |
| <b>SAR 1g (W/Kg)</b>  | 0.369140 |

|            |        |        |        |        |        |        |        |
|------------|--------|--------|--------|--------|--------|--------|--------|
| Z (mm)     | 0.00   | 4.00   | 9.00   | 14.00  | 19.00  | 24.00  | 29.00  |
| SAR (W/Kg) | 0.2226 | 0.1206 | 0.0525 | 0.0281 | 0.0187 | 0.0148 | 0.0139 |



| 3D screen shot  | Hot spot position  |
|---|--|
|  |  |

## MEASUREMENT 3

20M-1RB#49

Type: Phone measurement (Complete)

Date of measurement: 19/3/2023

Measurement duration: 7 minutes 54 seconds

### A. Experimental conditions.

|                        |  |
|------------------------|--|
| <u>Area Scan</u>       | <u>dx=15mm dy=15mm</u>                               |
| <u>ZoomScan</u>        | <u>5x5x7,dx=8mm dy=8mm</u><br><u>dz=5mm,Complete</u> |
| <u>Phantom</u>         | <u>Left head</u>                                     |
| <u>Device Position</u> | <u>Cheek</u>   |
| <u>Band</u>            | <u>LTE band 5</u>                                    |
| <u>Channels</u>        | <u>Middle</u>  |
| <u>Signal</u>          | <u>LTE (Crest factor: 1.0)</u>                       |

### B. SAR Measurement Results

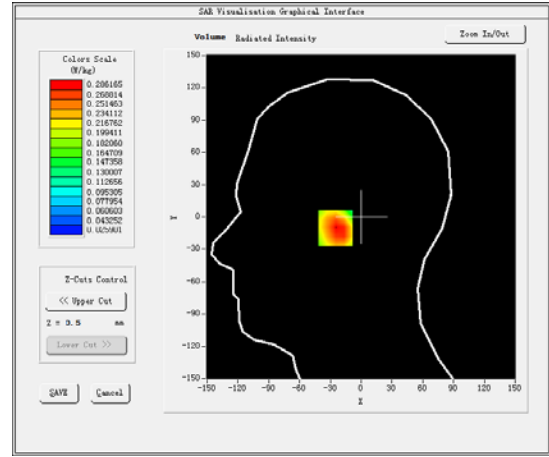
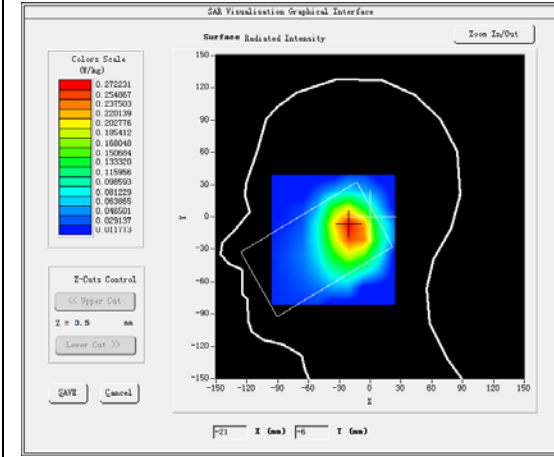
Middleer Band SAR (Channel 20600):

|   |            |
|---|------------|
| <b>Frequency (MHz)</b>                        | 844.000000 |
| <b>Relative permittivity (real part)</b>      | 40.488499  |
| <b>Relative permittivity (imaginary part)</b> | 20.173700  |
| <b>Conductivity (S/m)</b>                     | 0.945362   |
| <b>Variation (%)</b>                          | 0.114000   |



### SURFACE SAR

### VOLUME SAR

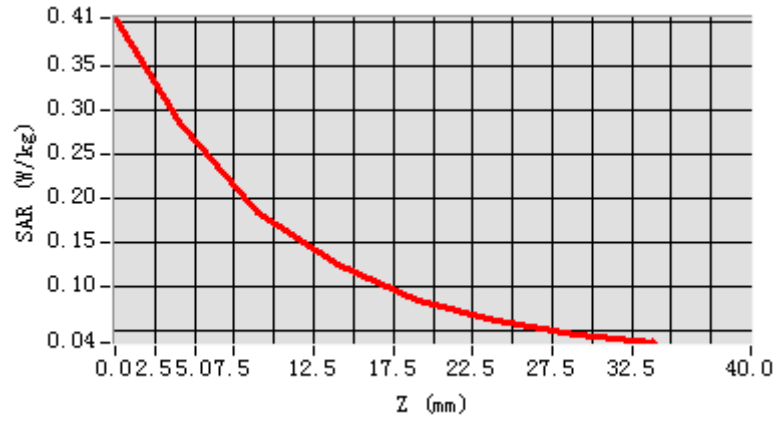


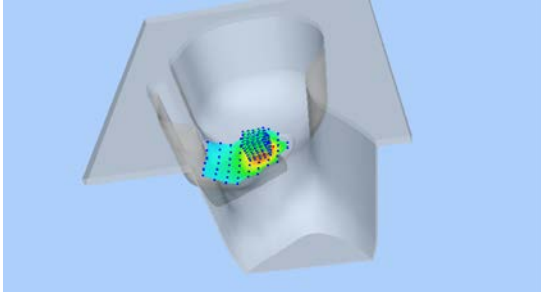
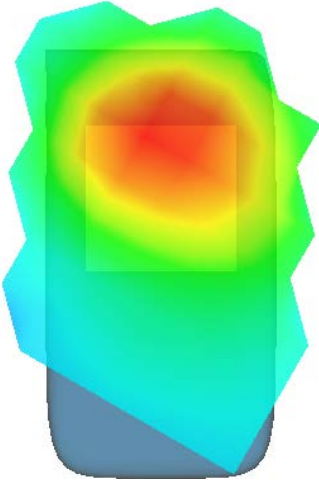
**Maximum location: X=-19.00, Y=-10.00**

**SAR Peak: 0.42 W/kg**

|                       |          |
|-----------------------|----------|
| <b>SAR 10g (W/Kg)</b> | 0.201330 |
| <b>SAR 1g (W/Kg)</b>  | 0.398220 |

|            |        |        |        |        |        |        |        |
|------------|--------|--------|--------|--------|--------|--------|--------|
| Z (mm)     | 0.00   | 4.00   | 9.00   | 14.00  | 19.00  | 24.00  | 29.00  |
| SAR (W/Kg) | 0.4053 | 0.2862 | 0.1848 | 0.1234 | 0.0841 | 0.0598 | 0.0455 |



| 3D screen shot  | Hot spot position  |
|---|--|
|  |  |

## MEASUREMENT 4

Rear-side-20M-1RB#99 -Middle

Type: Phone measurement (Complete)

Date of measurement: 19/3/2023

Measurement duration: 8 minutes 16 seconds

### A. Experimental conditions.

|                        |  |
|------------------------|--|
| <u>Area Scan</u>       | <u>dx=15mm dy=15mm</u>                         |
| <u>ZoomScan</u>        | <u>5x5x7,dx=8mm dy=8mm<br/>dz=5mm,Complete</u> |
| <u>Phantom</u>         | <u>Validation plane</u>                        |
| <u>Device Position</u> | <u>Body</u>                                    |
| <u>Band</u>            | <u>LTE band 5</u>                              |
| <u>Channels</u>        | <u>Middle</u>                                  |
| <u>Signal</u>          | <u>LTE (Crest factor: 1.0)</u>                 |

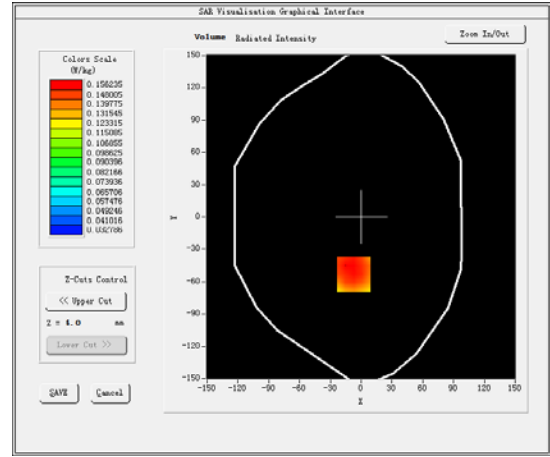
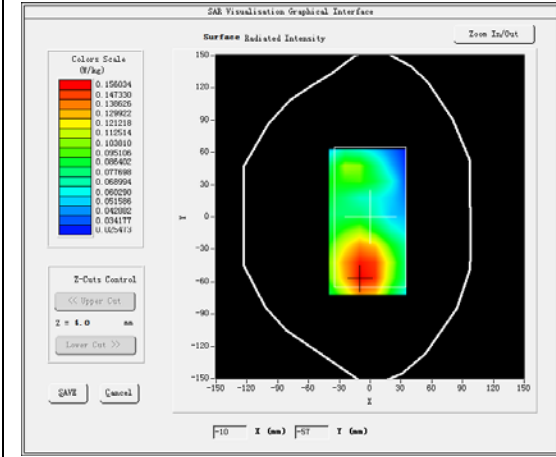
### B. SAR Measurement Results

Middleer Band SAR (Channel 20600):

|   |            |
|---|------------|
| <b>Frequency (MHz)</b>                        | 844.000000 |
| <b>Relative permittivity (real part)</b>      | 53.594849  |
| <b>Relative permittivity (imaginary part)</b> | 20.783649  |
| <b>Conductivity (S/m)</b>                     | 0.973945   |
| <b>Variation (%)</b>                          | 0.114000   |

### SURFACE SAR

### VOLUME SAR

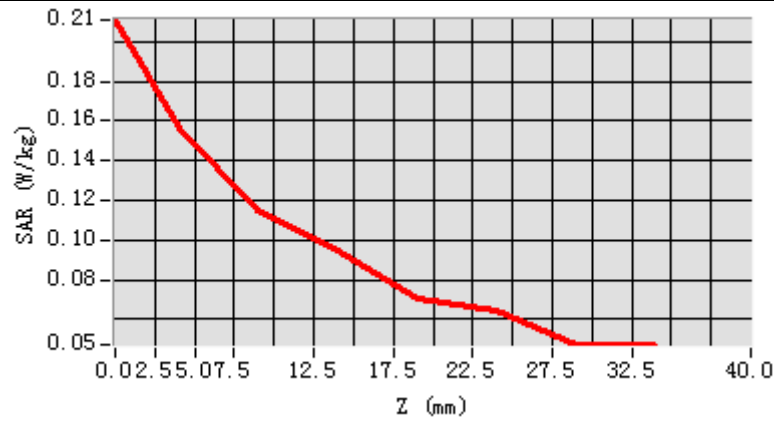


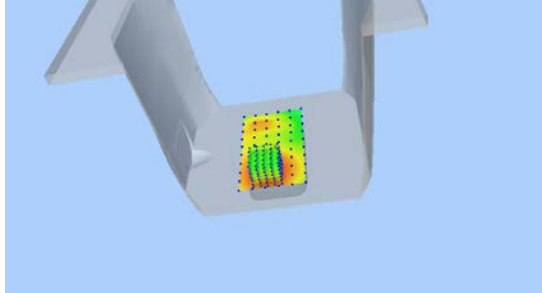
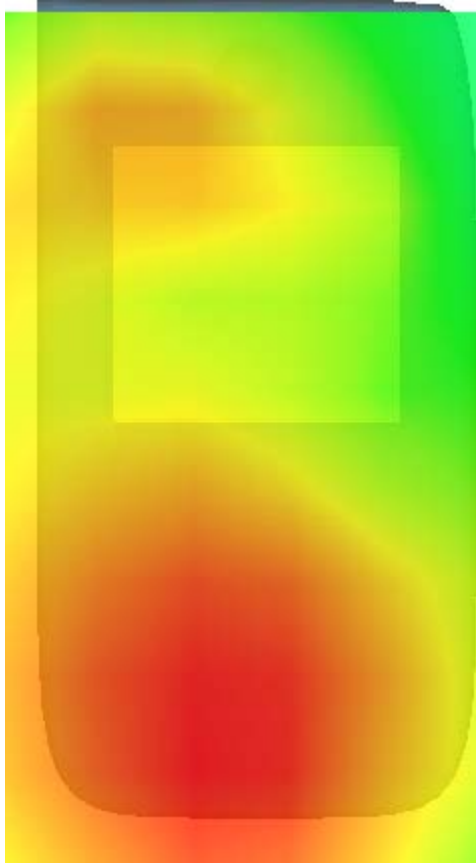
**Maximum location: X=-7.00, Y=-53.00**

**SAR Peak: 0.19 W/kg**

|                       |          |
|-----------------------|----------|
| <b>SAR 10g (W/Kg)</b> | 0.280000 |
| <b>SAR 1g (W/Kg)</b>  | 0.456000 |

|            |        |        |        |        |        |        |        |
|------------|--------|--------|--------|--------|--------|--------|--------|
| Z (mm)     | 0.00   | 4.00   | 9.00   | 14.00  | 19.00  | 24.00  | 29.00  |
| SAR (W/Kg) | 0.2108 | 0.1562 | 0.1148 | 0.0951 | 0.0709 | 0.0643 | 0.0474 |



| 3D screen shot  | Hot spot position  |
|---|--|
|  |  |

## MEASUREMENT 5

20M-1RB#99

Type: Phone measurement (Complete)

Date of measurement: 27/3/2023

Measurement duration: 7 minutes 53 seconds

### A. Experimental conditions.

|                        |  |
|------------------------|--|
| <u>Area Scan</u>       | <u>dx=15mm dy=15mm</u>                               |
| <u>ZoomScan</u>        | <u>5x5x7,dx=8mm dy=8mm</u><br><u>dz=5mm,Complete</u> |
| <u>Phantom</u>         | <u>Left head</u>                                     |
| <u>Device Position</u> | <u>Cheek</u>   |
| <u>Band</u>            | <u>LTE band 41</u>                                   |
| <u>Channels</u>        | <u>Middle</u>  |
| <u>Signal</u>          | <u>LTE (Crest factor: 1.0)</u>                       |

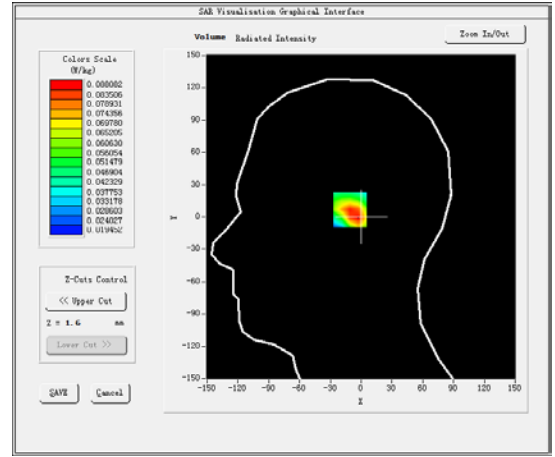
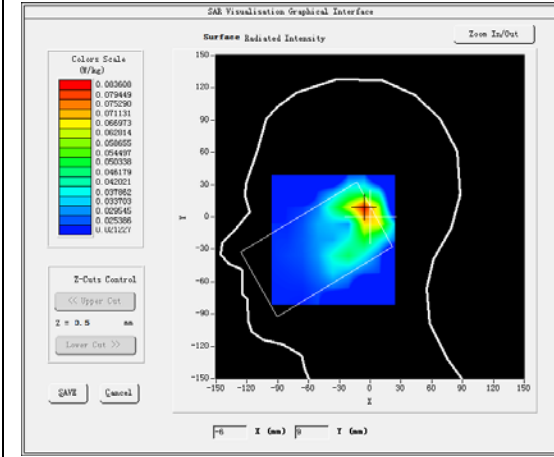
### B. SAR Measurement Results

Middleer Band SAR (Channel 40620):

|   |             |
|---|-------------|
| <b>Frequency (MHz)</b>                        | 2593.000000 |
| <b>Relative permittivity (real part)</b>      | 39.125332   |
| <b>Relative permittivity (imaginary part)</b> | 13.350667   |
| <b>Conductivity (S/m)</b>                     | 1.858709    |
| <b>Variation (%)</b>                          | 0.332000    |

### SURFACE SAR

### VOLUME SAR

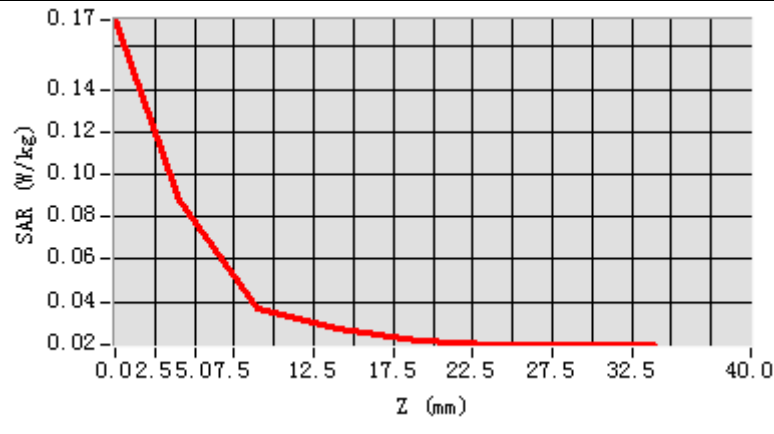


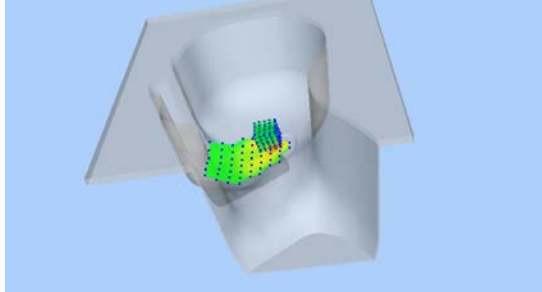
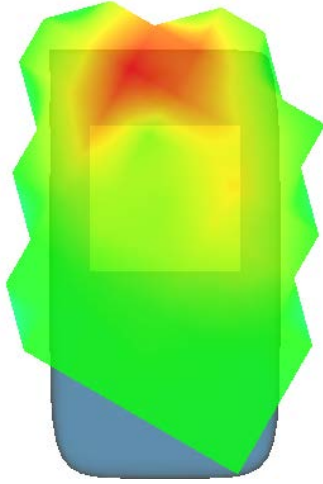
**Maximum location: X=-6.00, Y=7.00**

**SAR Peak: 0.16 W/kg**

|                       |          |
|-----------------------|----------|
| <b>SAR 10g (W/Kg)</b> | 0.402330 |
| <b>SAR 1g (W/Kg)</b>  | 0.625000 |

|            |        |        |        |        |        |        |        |
|------------|--------|--------|--------|--------|--------|--------|--------|
| Z (mm)     | 0.00   | 4.00   | 9.00   | 14.00  | 19.00  | 24.00  | 29.00  |
| SAR (W/Kg) | 0.1727 | 0.0881 | 0.0367 | 0.0272 | 0.0220 | 0.0202 | 0.0199 |



| 3D screen shot  | Hot spot position  |
|---|--|
|  |  |



## MEASUREMENT 6

Rear-side-20M-1RB#99-middle-Middle

Type: Phone measurement (Complete)

Date of measurement: 27/3/2023

Measurement duration: 7 minutes 31 seconds

### A. Experimental conditions.

|                        |  |
|------------------------|--|
| <u>Area Scan</u>       | <u>dx=15mm dy=15mm</u>                               |
| <u>ZoomScan</u>        | <u>5x5x7,dx=8mm dy=8mm</u><br><u>dz=5mm,Complete</u> |
| <u>Phantom</u>         | <u>Validation plane</u>                              |
| <u>Device Position</u> | <u>Body</u>  |
| <u>Band</u>            | <u>LTE band 41</u>                                   |
| <u>Channels</u>        | <u>Middle</u>  |
| <u>Signal</u>          | <u>LTE (Crest factor: 1.0)</u>                       |

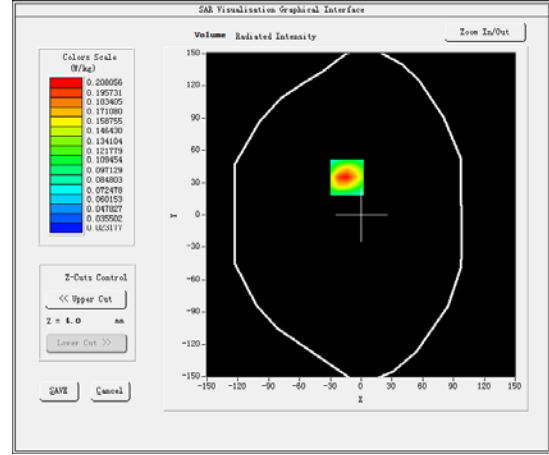
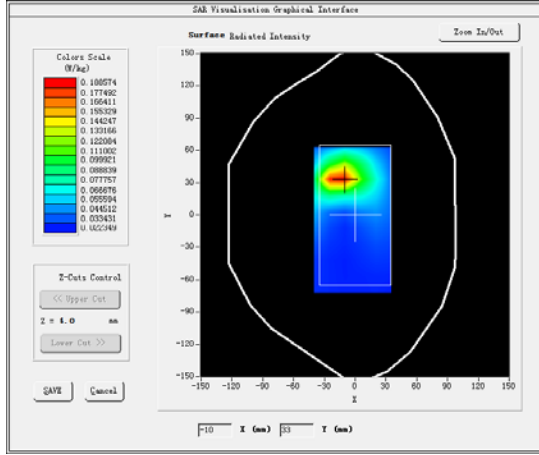
### B. SAR Measurement Results

Middleer Band SAR (Channel 40620):

|   |             |
|---|-------------|
| <b>Frequency (MHz)</b>                        | 2593.000000 |
| <b>Relative permittivity (real part)</b>      | 52.628727   |
| <b>Relative permittivity (imaginary part)</b> | 14.538727   |
| <b>Conductivity (S/m)</b>                     | 2.024114    |
| <b>Variation (%)</b>                          | 0.110000    |

### SURFACE SAR

### VOLUME SAR

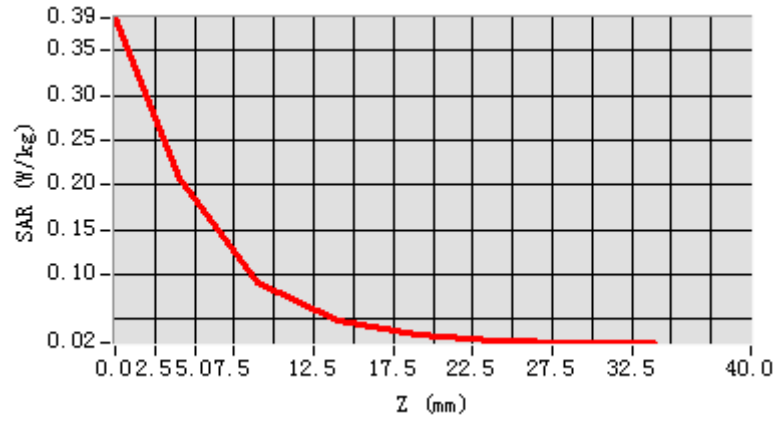


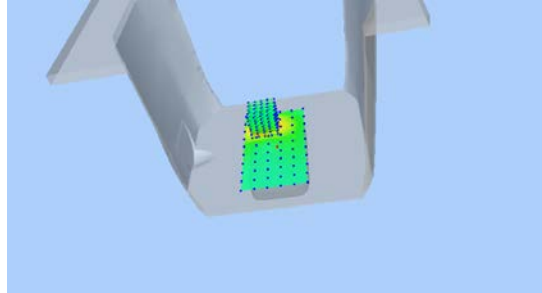
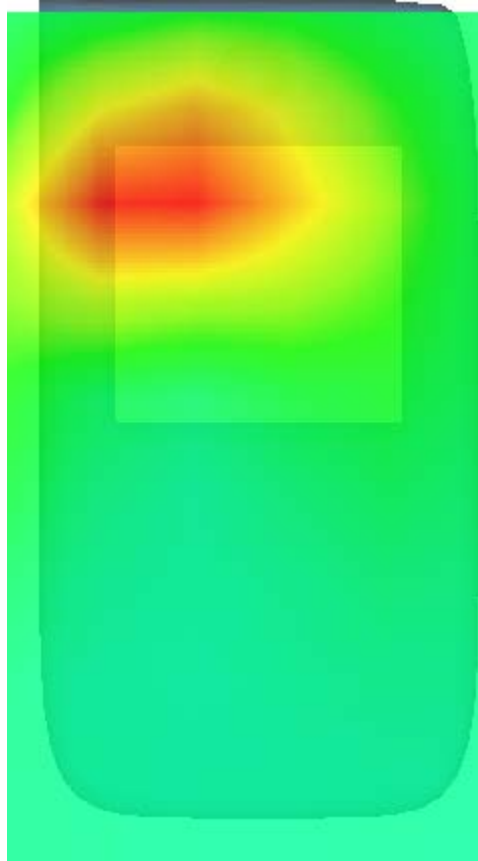
Maximum location: X=-14.00, Y=35.00

SAR Peak: 0.39 W/kg

|                |          |
|----------------|----------|
| SAR 10g (W/Kg) | 0.256000 |
| SAR 1g (W/Kg)  | 0.398000 |

|            |        |        |        |        |        |        |        |
|------------|--------|--------|--------|--------|--------|--------|--------|
| Z (mm)     | 0.00   | 4.00   | 9.00   | 14.00  | 19.00  | 24.00  | 29.00  |
| SAR (W/Kg) | 0.3869 | 0.2081 | 0.0900 | 0.0482 | 0.0324 | 0.0262 | 0.0243 |



| 3D screen shot  | Hot spot position  |
|---|--|
|  |  |

## MEASUREMENT 7

Type: Phone measurement (Complete)

Date of measurement: 19/3/2023

Measurement duration: 8 minutes 2 seconds

### A. Experimental conditions.

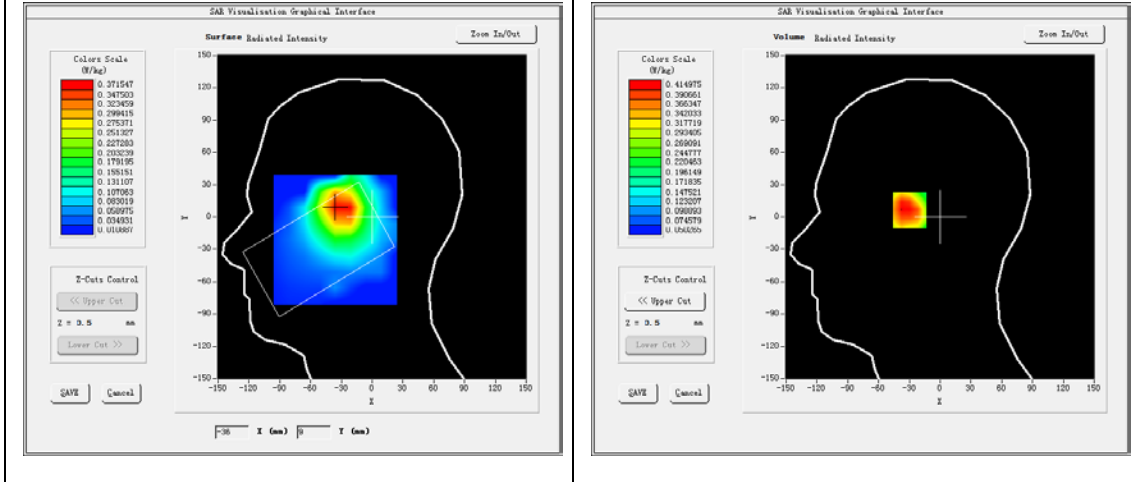
|                        |  |
|------------------------|--|
| <u>Area Scan</u>       | <u>dx=15mm dy=15mm</u>                               |
| <u>ZoomScan</u>        | <u>5x5x7,dx=8mm dy=8mm</u><br><u>dz=5mm,Complete</u> |
| <u>Phantom</u>         | <u>Left head</u>                                     |
| <u>Device Position</u> | <u>Cheek</u>   |
| <u>Band</u>            | <u>CUSTOM (GPRS850 4Tx)</u>                          |
| <u>Channels</u>        | <u>Middle</u>  |
| <u>Signal</u>          | <u>Duty Cycle: 2.00 (Crest factor: 2.0)</u>          |

### B. SAR Measurement Results

|  |            |
|--|------------|
| Frequency (MHz)                        | 824.200012 |
| Relative permittivity (real part)      | 40.591839  |
| Relative permittivity (imaginary part) | 19.548140  |
| Conductivity (S/m)                     | 0.895088   |
| Variation (%)                          | 0.220000   |

### SURFACE SAR

### VOLUME SAR

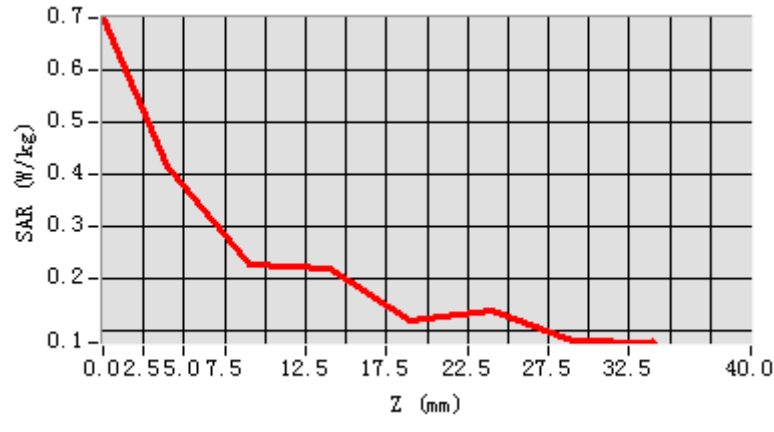


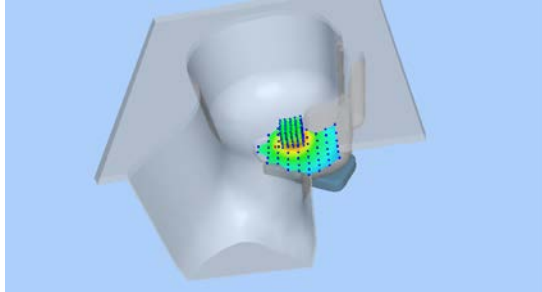
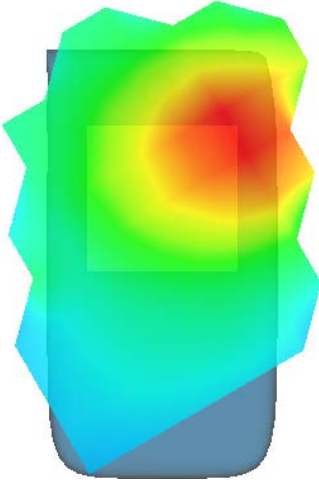
**Maximum location: X=-29.00, Y=9.00**

**SAR Peak: 0.62 W/kg**

|                       |          |
|-----------------------|----------|
| <b>SAR 10g (W/Kg)</b> | 0.365330 |
| <b>SAR 1g (W/Kg)</b>  | 0.550223 |

|            |        |        |        |        |        |        |        |
|------------|--------|--------|--------|--------|--------|--------|--------|
| Z (mm)     | 0.00   | 4.00   | 9.00   | 14.00  | 19.00  | 24.00  | 29.00  |
| SAR (W/Kg) | 0.6985 | 0.4150 | 0.2243 | 0.2161 | 0.1191 | 0.1364 | 0.0801 |



| 3D screen shot  | Hot spot position  |
|---|--|
|  |  |

## MEASUREMENT 8

### Rear-side-Middle

Type: Phone measurement (Complete)

Date of measurement: 19/3/2023

Measurement duration: 11 minutes 17 seconds

### A. Experimental conditions.

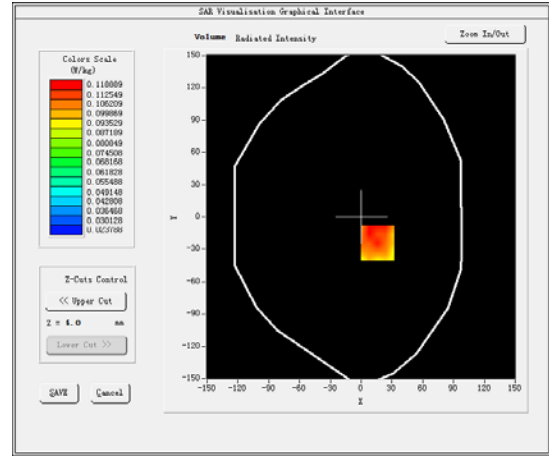
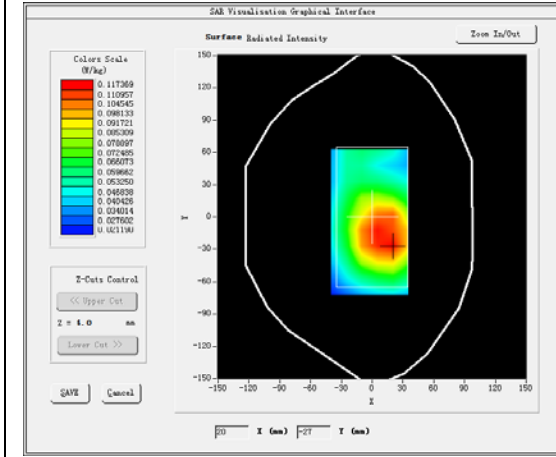
|                        |  |
|------------------------|--|
| <u>Area Scan</u>       | <u>dx=15mm dy=15mm</u>                               |
| <u>ZoomScan</u>        | <u>5x5x7,dx=8mm dy=8mm</u><br><u>dz=5mm,Complete</u> |
| <u>Phantom</u>         | <u>Validation plane</u>                              |
| <u>Device Position</u> | <u>Body</u>  |
| <u>Band</u>            | <u>CUSTOM (GPRS850 4Tx)</u>                          |
| <u>Channels</u>        | <u>Middle</u>  |
| <u>Signal</u>          | <u>Duty Cycle: 2.00 (Crest factor: 2.0)</u>          |

### B. SAR Measurement Results

|   |            |
|---|------------|
| <b>Frequency (MHz)</b>                        | 824.200012 |
| <b>Relative permittivity (real part)</b>      | 53.891621  |
| <b>Relative permittivity (imaginary part)</b> | 20.664499  |
| <b>Conductivity (S/m)</b>                     | 0.946204   |
| <b>Variation (%)</b>                          | 0.335000   |

### SURFACE SAR

### VOLUME SAR



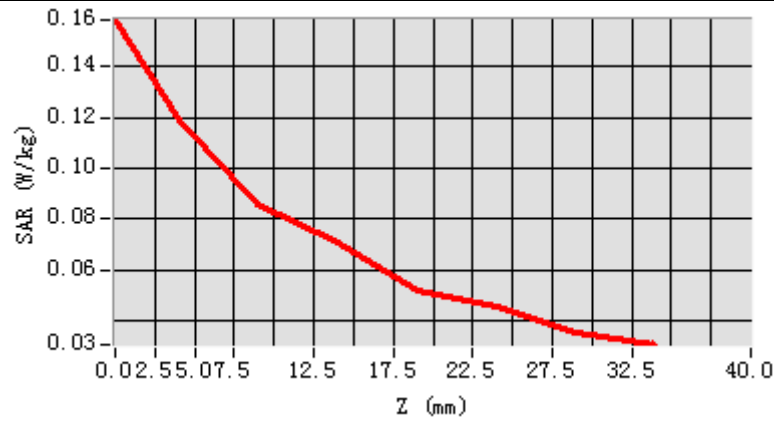
Maximum location: X=16.00, Y=-24.00

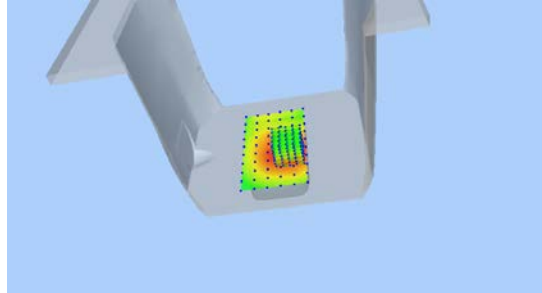
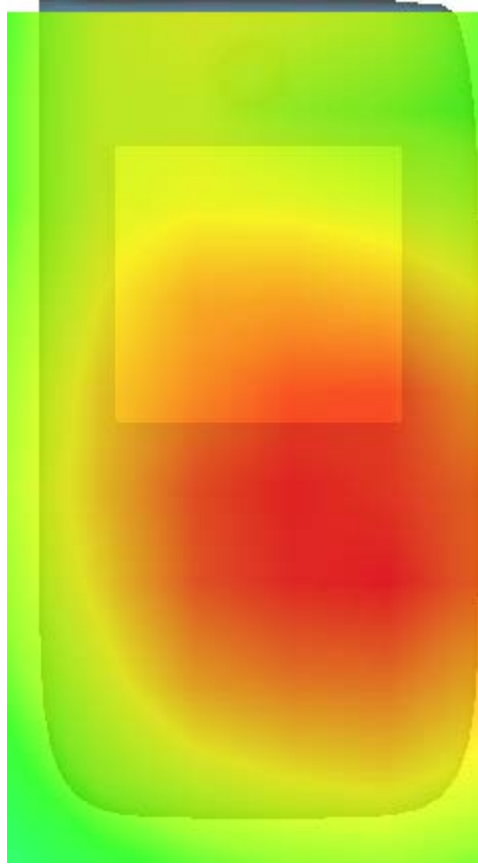
SAR Peak: 0.16 W/kg

|                |          |
|----------------|----------|
| SAR 10g (W/Kg) | 0.410332 |
| SAR 1g (W/Kg)  | 0.625113 |



|            |        |        |        |        |        |        |        |
|------------|--------|--------|--------|--------|--------|--------|--------|
| Z (mm)     | 0.00   | 4.00   | 9.00   | 14.00  | 19.00  | 24.00  | 29.00  |
| SAR (W/Kg) | 0.1583 | 0.1189 | 0.0856 | 0.0706 | 0.0517 | 0.0459 | 0.0356 |



| 3D screen shot  | Hot spot position  |
|---|--|
|  |  |

## MEASUREMENT 9

Type: Phone measurement (Complete)

Date of measurement: 22/3/2023

Measurement duration: 7 minutes 58 seconds

### A. Experimental conditions.

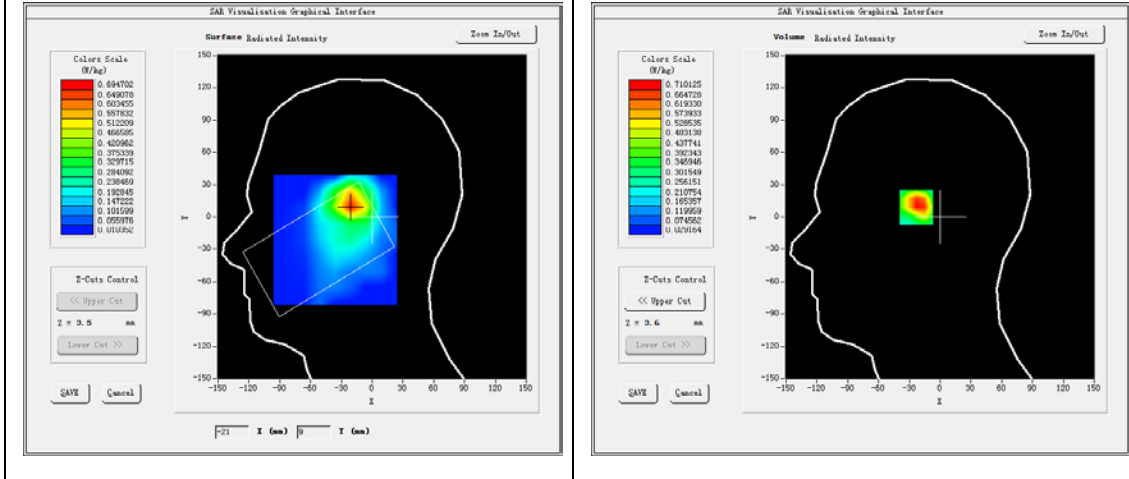
|                        |  |
|------------------------|--|
| <u>Area Scan</u>       | <u>dx=15mm dy=15mm</u>                         |
| <u>ZoomScan</u>        | <u>5x5x7,dx=8mm dy=8mm<br/>dz=5mm,Complete</u> |
| <u>Phantom</u>         | <u>Left head</u>                               |
| <u>Device Position</u> | <u>Cheek</u>                                   |
| <u>Band</u>            | <u>CUSTOM (GPRS1900 4Tx)</u>                   |
| <u>Channels</u>        | <u>Middle</u>                                  |
| <u>Signal</u>          | <u>Duty Cycle: 2.00 (Crest factor: 2.0)</u>    |

### B. SAR Measurement Results

|  |             |
|--|-------------|
| Frequency (MHz)                        | 1880.000000 |
| Relative permittivity (real part)      | 40.660301   |
| Relative permittivity (imaginary part) | 13.075800   |
| Conductivity (S/m)                     | 1.365695    |
| Variation (%)                          | 0.114000    |

### SURFACE SAR

### VOLUME SAR

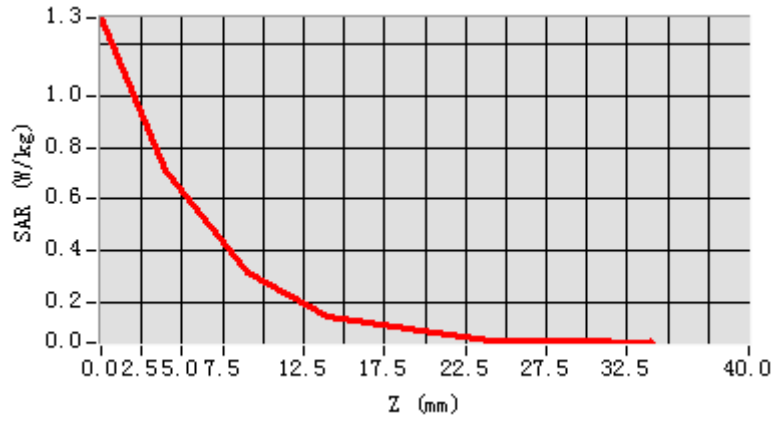


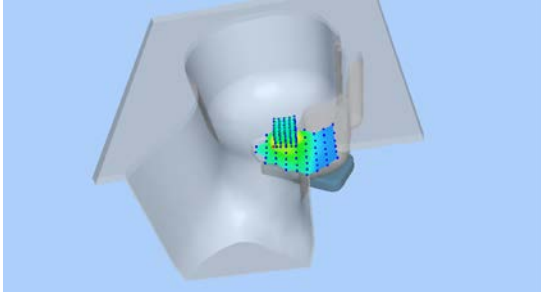
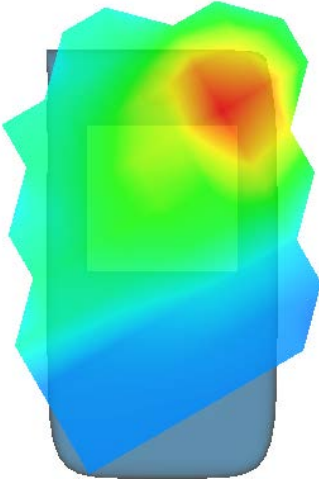
**Maximum location: X=-21.00, Y=11.00**

**SAR Peak: 1.37 W/kg**

|                       |          |
|-----------------------|----------|
| <b>SAR 10g (W/Kg)</b> | 0.320335 |
| <b>SAR 1g (W/Kg)</b>  | 0.658440 |

|            |        |        |        |        |        |        |        |
|------------|--------|--------|--------|--------|--------|--------|--------|
| Z (mm)     | 0.00   | 4.00   | 9.00   | 14.00  | 19.00  | 24.00  | 29.00  |
| SAR (W/Kg) | 1.2995 | 0.7101 | 0.3134 | 0.1469 | 0.0959 | 0.0560 | 0.0503 |



| 3D screen shot  | Hot spot position  |
|---|--|
|  |  |

## MEASUREMENT 10

Front-side-middle

Type: Phone measurement (Complete)

Date of measurement: 22/3/2023

Measurement duration: 8 minutes 3 seconds

### A. Experimental conditions.

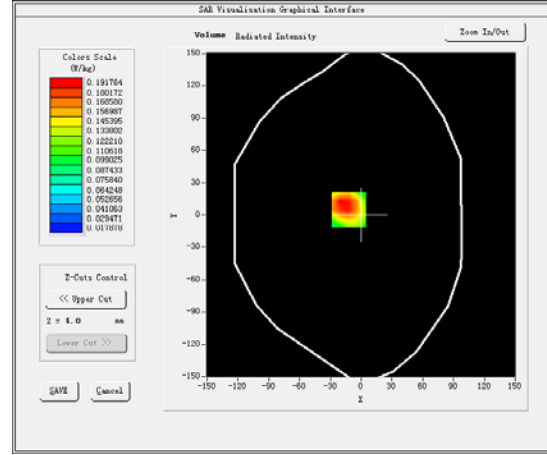
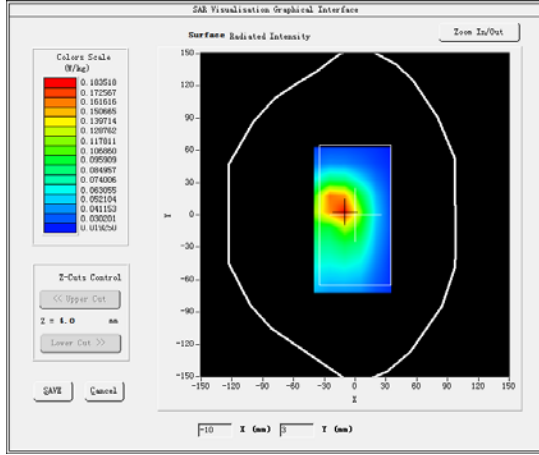
|                        |  |
|------------------------|--|
| <u>Area Scan</u>       | <u>dx=15mm dy=15mm</u>                               |
| <u>ZoomScan</u>        | <u>5x5x7,dx=8mm dy=8mm</u><br><u>dz=5mm,Complete</u> |
| <u>Phantom</u>         | <u>Validation plane</u>                              |
| <u>Device Position</u> | <u>Body</u>  |
| <u>Band</u>            | <u>CUSTOM (GPRS1900 4Tx)</u>                         |
| <u>Channels</u>        | <u>Middle</u>  |
| <u>Signal</u>          | <u>Duty Cycle: 2.00 (Crest factor: 2.0)</u>          |

### B. SAR Measurement Results

|   |             |
|---|-------------|
| <b>Frequency (MHz)</b>                        | 1880.000000 |
| <b>Relative permittivity (real part)</b>      | 51.470901   |
| <b>Relative permittivity (imaginary part)</b> | 15.022000   |
| <b>Conductivity (S/m)</b>                     | 1.568964    |
| <b>Variation (%)</b>                          | -0.970000   |

### SURFACE SAR

### VOLUME SAR

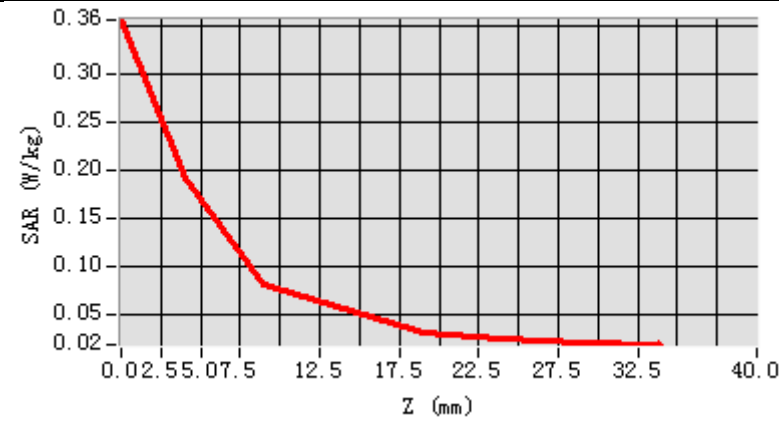


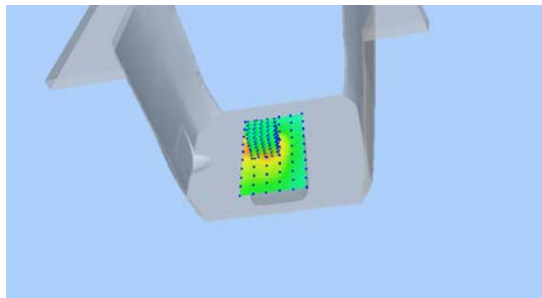
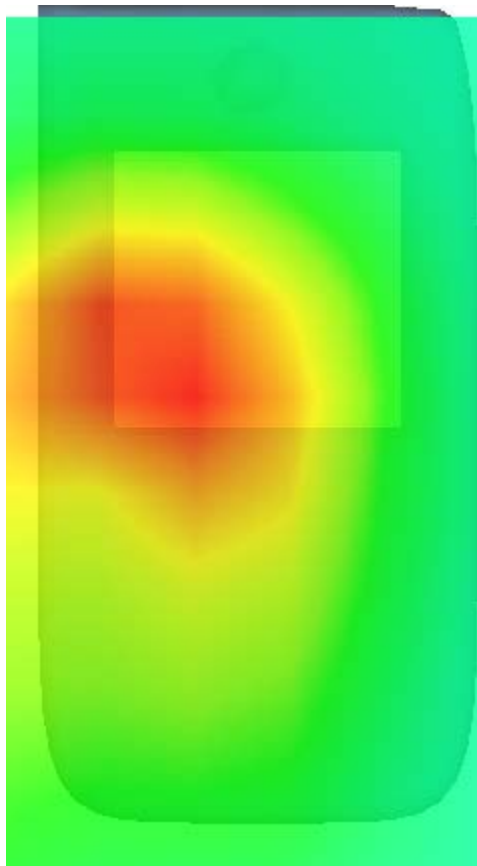
**Maximum location: X=-12.00, Y=5.00**

**SAR Peak: 0.33 W/kg**

|                       |          |
|-----------------------|----------|
| <b>SAR 10g (W/Kg)</b> | 0.265330 |
| <b>SAR 1g (W/Kg)</b>  | 0.379220 |

|            |        |        |        |        |        |        |        |
|------------|--------|--------|--------|--------|--------|--------|--------|
| Z (mm)     | 0.00   | 4.00   | 9.00   | 14.00  | 19.00  | 24.00  | 29.00  |
| SAR (W/Kg) | 0.3566 | 0.1918 | 0.0817 | 0.0557 | 0.0313 | 0.0253 | 0.0211 |



| 3D screen shot  | Hot spot position  |
|---|--|
|  |  |

## MEASUREMENT 11

Type: Phone measurement (Complete)

Date of measurement: 29/3/2023

Measurement duration: 8minutes 25seconds

### A. Experimental conditions.

|                               |   |
|-------------------------------|---|
| <b><u>Area Scan</u></b>       | <u>dx=10mm dy=10mm</u>                          |
| <b><u>ZoomScan</u></b>        | <u>7x7x12,dx=4mm dy=4mm<br/>dz=2mm,Complete</u> |
| <b><u>Phantom</u></b>         | <u>Left head</u>                                |
| <b><u>Device Position</u></b> | <u>Cheek</u>                                    |
| <b><u>Band</u></b>            | <u>IEEE 802.11a U-NII-2A</u>                    |
| <b><u>Channels</u></b>        | <u>Middle</u>                                   |
| <b><u>Signal</u></b>          | <u>Duty cycle:1:1</u>                           |

### B. SAR Measurement Results

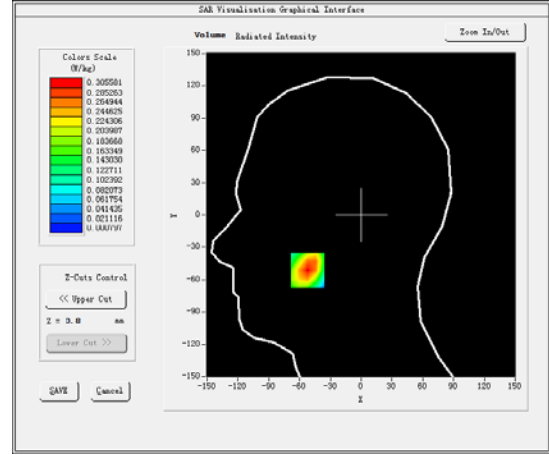
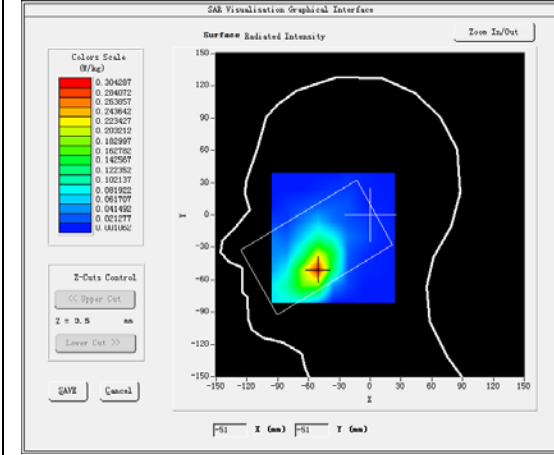
Middle Band SAR (Channel 52):

|   |             |
|---|-------------|
| <b>Frequency (MHz)</b>                        | 5260.000000 |
| <b>Relative permittivity (real part)</b>      | 35.619701   |
| <b>Relative permittivity (imaginary part)</b> | 15.212540   |
| <b>Conductivity (S/m)</b>                     | 4.495210    |
| <b>Variation (%)</b>                          | 0.220000    |



### SURFACE SAR

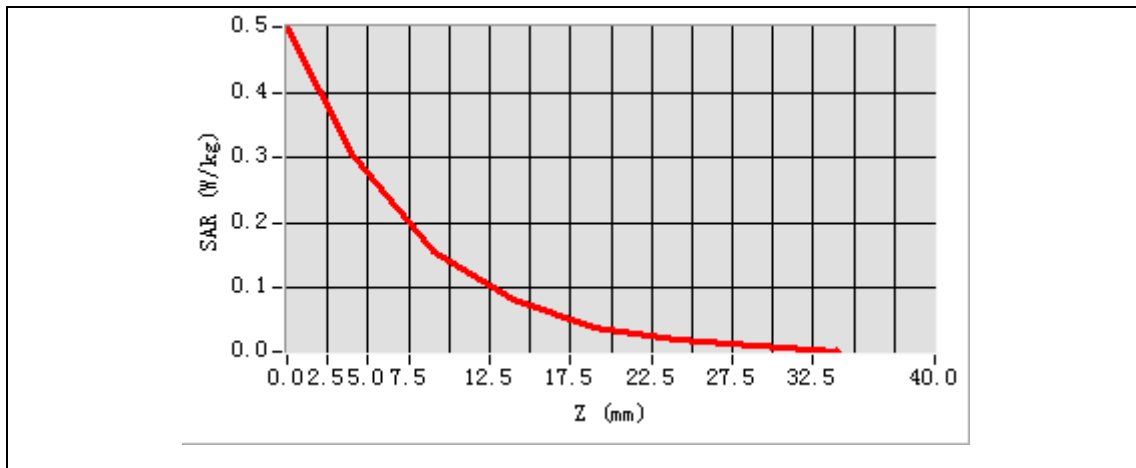
### VOLUME SAR

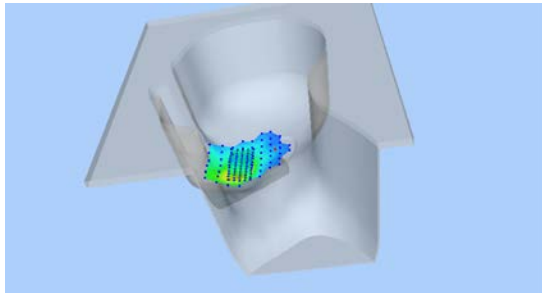
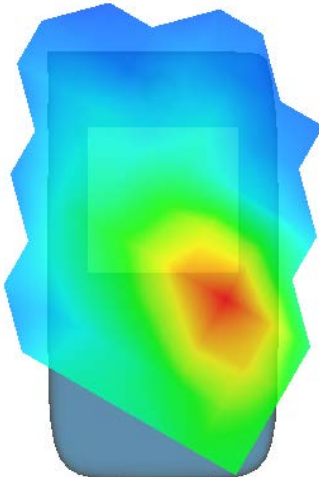


**Maximum location: X=-52.00, Y=-51.00**

**SAR Peak: 0.51 W/kg**

|                       |          |
|-----------------------|----------|
| <b>SAR 10g (W/Kg)</b> | 0.126330 |
| <b>SAR 1g (W/Kg)</b>  | 0.320000 |



| 3D screen shot   | Hot spot position   |
|--|---|
|  |  |

## MEASUREMENT 12

Towards-ground- Middle

Type: Phone measurement (Complete)

Date of measurement: 29/3/2023

Measurement duration:10 minutes 36 seconds

### A. Experimental conditions.

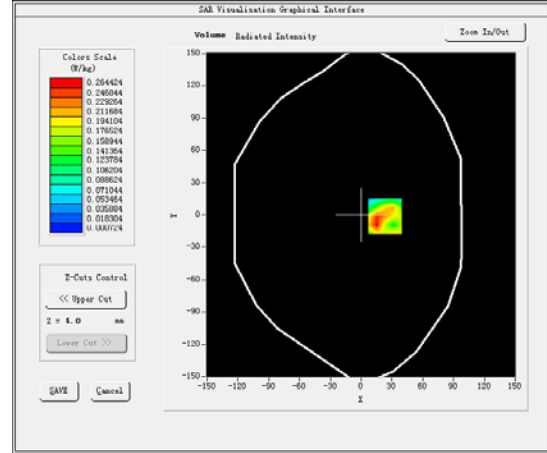
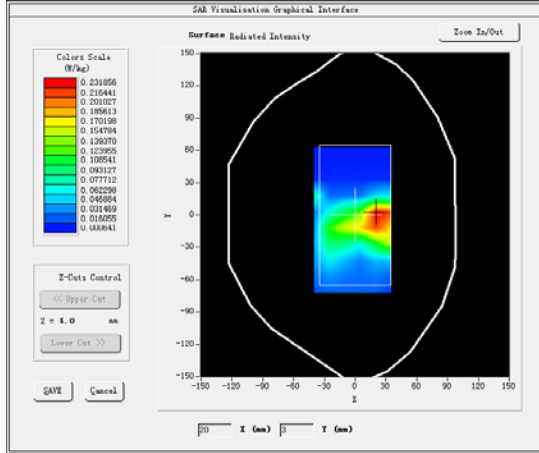
|                        |   |
|------------------------|---|
| <u>Area Scan</u>       | <u>dx=10mm dy=10mm</u>                                |
| <u>ZoomScan</u>        | <u>7x7x12,dx=4mm dy=4mm</u><br><u>dz=2mm,Complete</u> |
| <u>Phantom</u>         | <u>Validation plane</u>                               |
| <u>Device Position</u> | <u>Body</u>   |
| <u>Band</u>            | <u>IEEE 802.11a U-NII-1</u>                           |
| <u>Channels</u>        | <u>Middle</u>   |
| <u>Signal</u>          | <u>Duty cycle:1:1</u>                                 |

### B. SAR Measurement Results

|   |             |
|---|-------------|
| <b>Frequency (MHz)</b>                        | 5260.000000 |
| <b>Relative permittivity (real part)</b>      | 35.858526   |
| <b>Relative permittivity (imaginary part)</b> | 15.623689   |
| <b>Conductivity (S/m)</b>                     | 4.494532    |
| <b>Variation (%)</b>                          | 0.202000    |

### SURFACE SAR

### VOLUME SAR

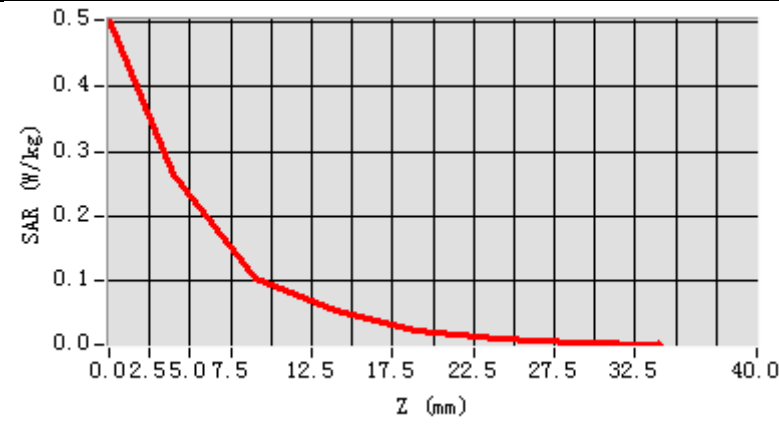


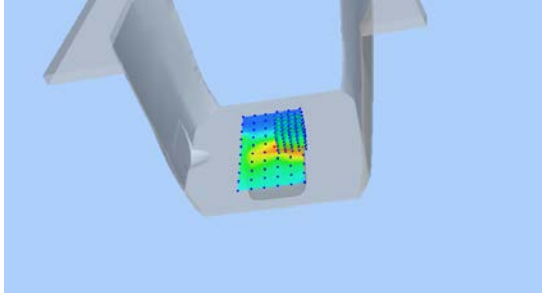
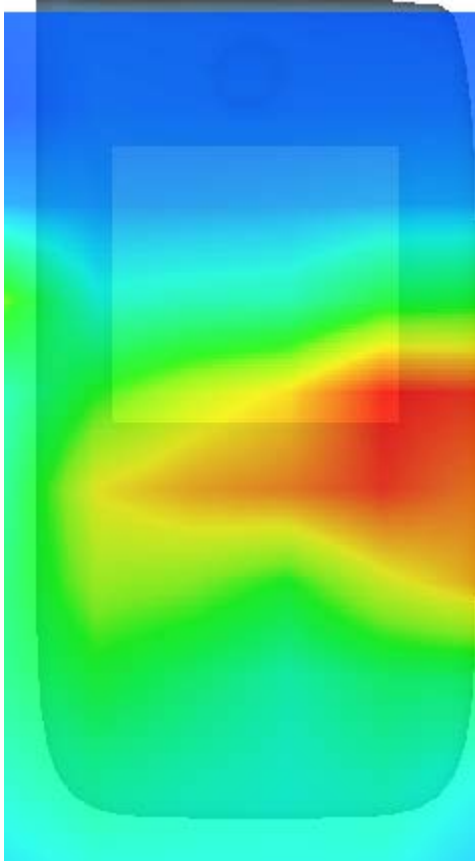
**Maximum location: X=23.00, Y=-1.00**

**SAR Peak: 0.48 W/kg**

|                       |          |
|-----------------------|----------|
| <b>SAR 10g (W/Kg)</b> | 0.198223 |
| <b>SAR 1g (W/Kg)</b>  | 0.345000 |

|            |        |        |        |        |        |        |        |
|------------|--------|--------|--------|--------|--------|--------|--------|
| Z (mm)     | 0.00   | 4.00   | 9.00   | 14.00  | 19.00  | 24.00  | 29.00  |
| SAR (W/Kg) | 0.5035 | 0.2644 | 0.1036 | 0.0539 | 0.0226 | 0.0107 | 0.0050 |



| 3D screen shot  | Hot spot position  |
|---|--|
|  |  |

## MEASUREMENT 13

Type: Phone measurement (Complete)

Date of measurement: 29/3/2023

Measurement duration: 9 minutes 46 seconds

### A. Experimental conditions.

|                        |   |
|------------------------|---|
| <u>Area Scan</u>       | <u>dx=10mm dy=10mm</u>                          |
| <u>ZoomScan</u>        | <u>7x7x12,dx=4mm dy=4mm<br/>dz=2mm,Complete</u> |
| <u>Phantom</u>         | <u>Left head</u>                                |
| <u>Device Position</u> | <u>Cheek</u>                                    |
| <u>Band</u>            | <u>IEEE 802.11a U-NII-3</u>                     |
| <u>Channels</u>        | <u>Middle</u>                                   |
| <u>Signal</u>          | <u>Duty cycle:1:1</u>                           |

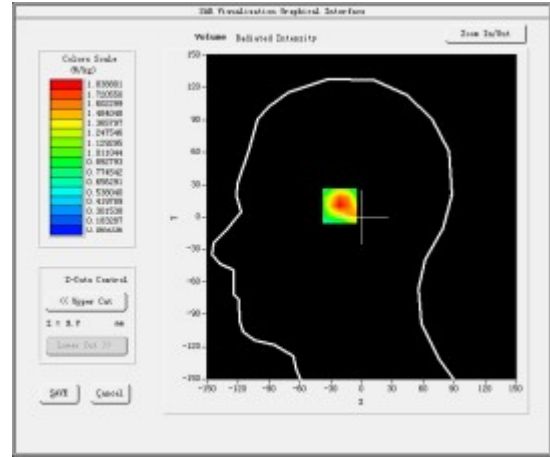
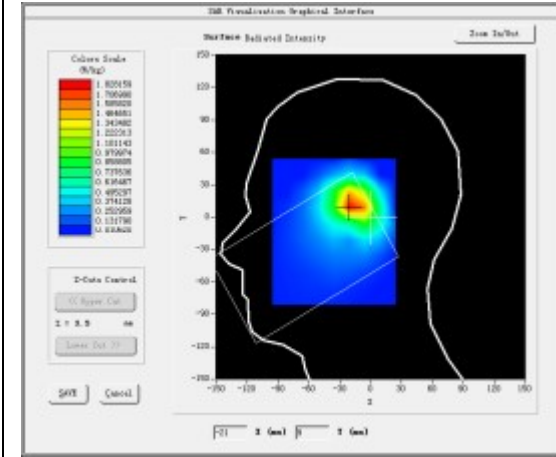
### B. SAR Measurement Results

Middle Band SAR (Channel 116):

|   |             |
|---|-------------|
| <b>Frequency (MHz)</b>                        | 5580.000000 |
| <b>Relative permittivity (real part)</b>      | 34.635521   |
| <b>Relative permittivity (imaginary part)</b> | 16.245435   |
| <b>Conductivity (S/m)</b>                     | 5.161300    |
| <b>Variation (%)</b>                          | 0.200000    |

### SURFACE SAR

### VOLUME SAR

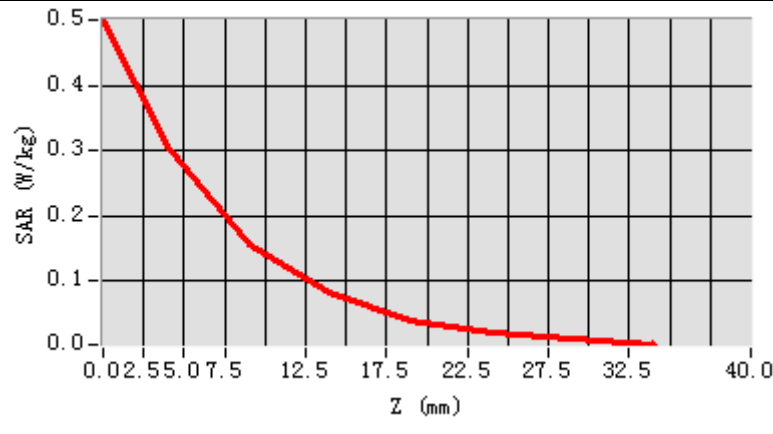


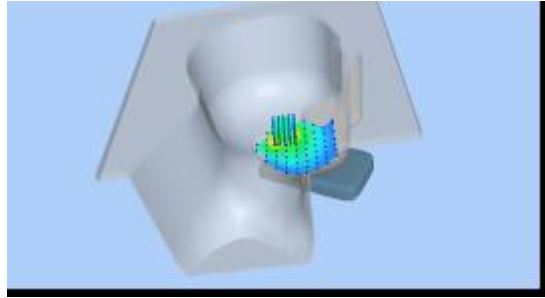
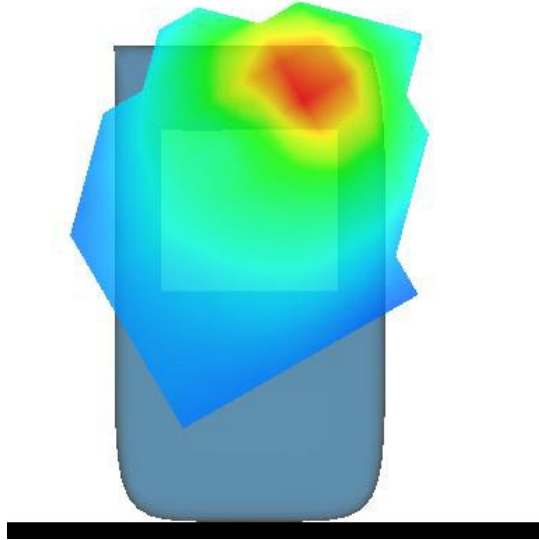
**Maximum location: X=-19.00, Y=12.00**

**SAR Peak: 0.51 W/kg**

|                       |          |
|-----------------------|----------|
| <b>SAR 10g (W/Kg)</b> | 0.135220 |
| <b>SAR 1g (W/Kg)</b>  | 0.298230 |

|            |        |        |        |        |        |        |        |
|------------|--------|--------|--------|--------|--------|--------|--------|
| Z (mm)     | 0.00   | 4.00   | 9.00   | 14.00  | 19.00  | 24.00  | 29.00  |
| SAR (W/Kg) | 0.5004 | 0.3056 | 0.1563 | 0.0817 | 0.0410 | 0.0213 | 0.0107 |



| 3D screen shot  | Hot spot position  |
|---|--|
|  |  |



## MEASUREMENT 14

Towards-ground- Middle

Type: Phone measurement (Complete)

Date of measurement: 29/3/2023

Measurement duration: 8 minutes 40seconds

### A. Experimental conditions.

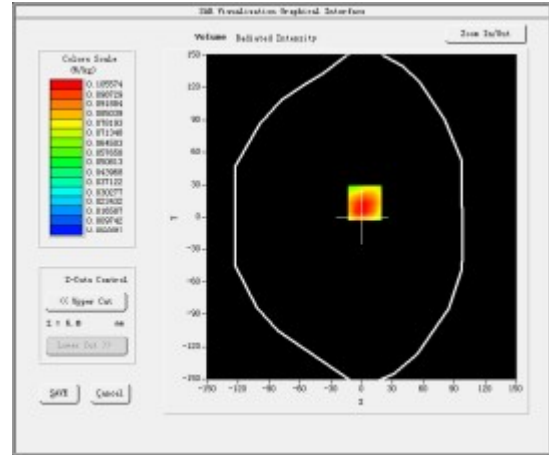
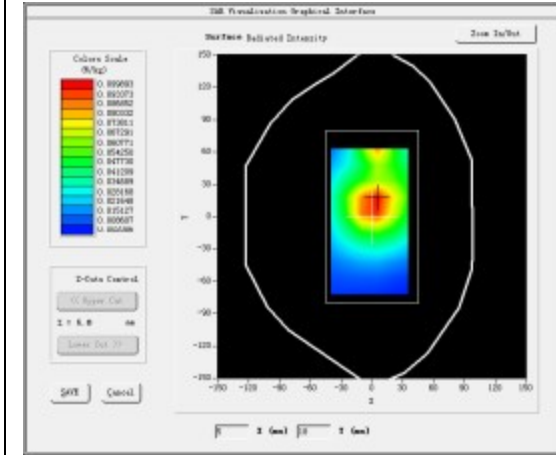
|                        |   |
|------------------------|---|
| <u>Area Scan</u>       | <u>dx=10mm dy=10mm</u>                                |
| <u>ZoomScan</u>        | <u>7x7x12,dx=4mm dy=4mm</u><br><u>dz=2mm,Complete</u> |
| <u>Phantom</u>         | <u>Validation plane</u>                               |
| <u>Device Position</u> | <u>Body</u>   |
| <u>Band</u>            | <u>IEEE 802.11a U-NII-3</u>                           |
| <u>Channels</u>        | <u>Middle</u>   |
| <u>Signal</u>          | <u>Duty cycle:1:1</u>                                 |

### B. SAR Measurement Results

|   |             |
|---|-------------|
| <b>Frequency (MHz)</b>                        | 5580.000000 |
| <b>Relative permittivity (real part)</b>      | 48.235748   |
| <b>Relative permittivity (imaginary part)</b> | 19.060800   |
| <b>Conductivity (S/m)</b>                     | 6.173560    |
| <b>Variation (%)</b>                          | 0.145000    |

### SURFACE SAR

### VOLUME SAR

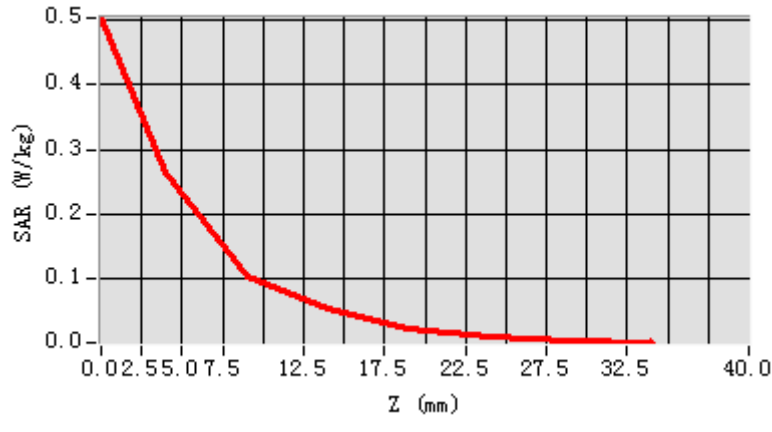


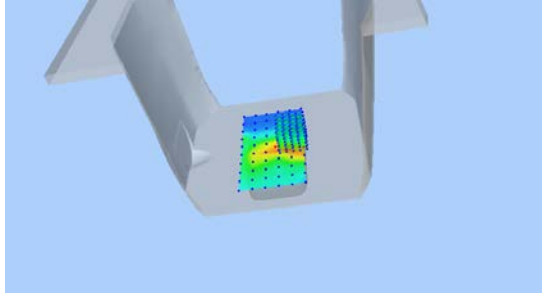
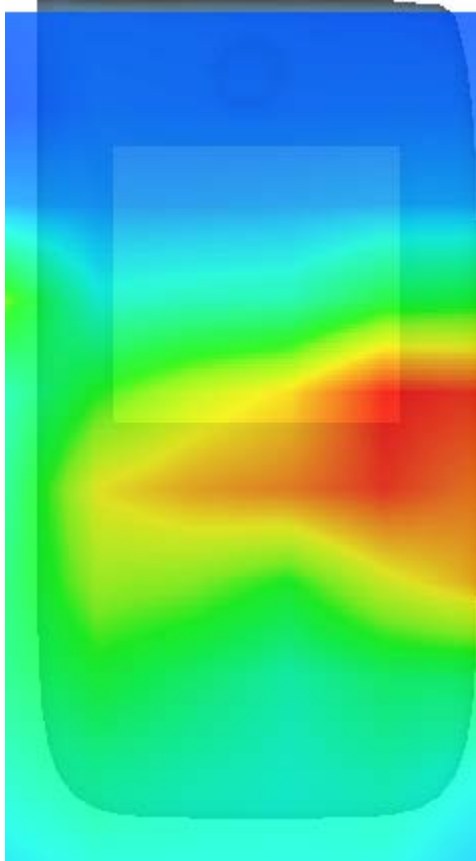
**Maximum location: X=3.00, Y=13.00**

**SAR Peak: 0.17 W/kg**

|                       |          |
|-----------------------|----------|
| <b>SAR 10g (W/Kg)</b> | 0.202330 |
| <b>SAR 1g (W/Kg)</b>  | 0.305223 |

|            |        |        |        |        |        |        |        |
|------------|--------|--------|--------|--------|--------|--------|--------|
| Z (mm)     | 0.00   | 4.00   | 9.00   | 14.00  | 19.00  | 24.00  | 29.00  |
| SAR (W/Kg) | 0.5035 | 0.2644 | 0.1036 | 0.0539 | 0.0226 | 0.0107 | 0.0050 |



| 3D screen shot  | Hot spot position  |
|---|--|
|  |  |

## MEASUREMENT 15

Type: Phone measurement (Complete)

Date of measurement: 29/3/2023

Measurement duration: 9 minutes 36 seconds

### A. Experimental conditions.

|                        |   |
|------------------------|---|
| <u>Area Scan</u>       | <u>dx=10mm dy=10mm</u>                            |
| <u>ZoomScan</u>        | <u>7x7x12, dx=4mm dy=4mm<br/>dz=2mm, Complete</u> |
| <u>Phantom</u>         | <u>Left head</u>                                  |
| <u>Device Position</u> | <u>Cheek</u>                                      |
| <u>Band</u>            | <u>IEEE 802.11a U-NII-4</u>                       |
| <u>Channels</u>        | <u>Middle</u>                                     |
| <u>Signal</u>          | <u>Duty cycle:1:1</u>                             |

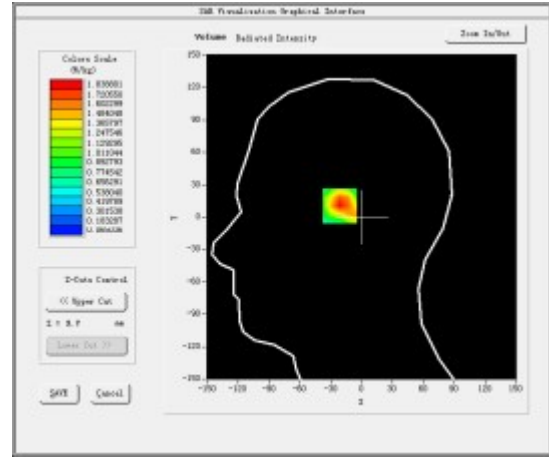
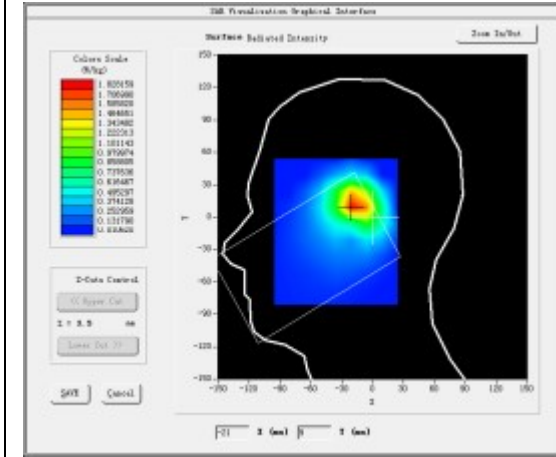
### B. SAR Measurement Results

Middle Band SAR (Channel 157):

|   |             |
|---|-------------|
| <b>Frequency (MHz)</b>                        | 5785.000000 |
| <b>Relative permittivity (real part)</b>      | 34.635521   |
| <b>Relative permittivity (imaginary part)</b> | 16.245435   |
| <b>Conductivity (S/m)</b>                     | 5.161300    |
| <b>Variation (%)</b>                          | 0.225000    |

### SURFACE SAR

### VOLUME SAR

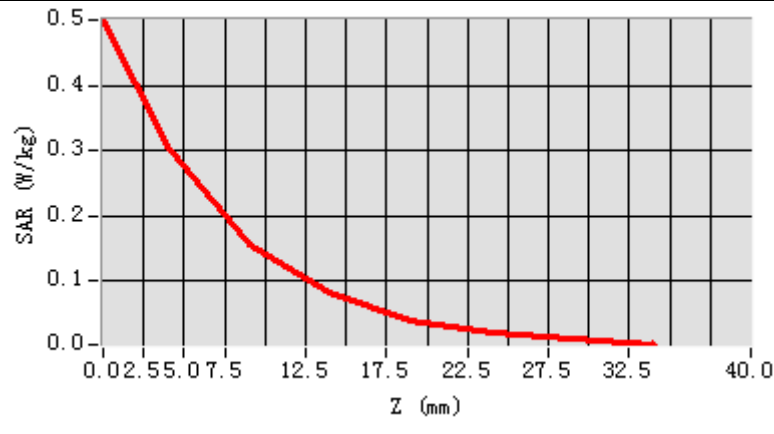


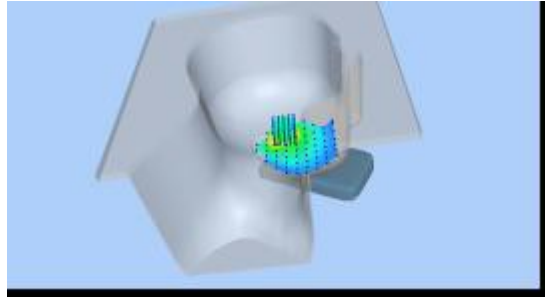
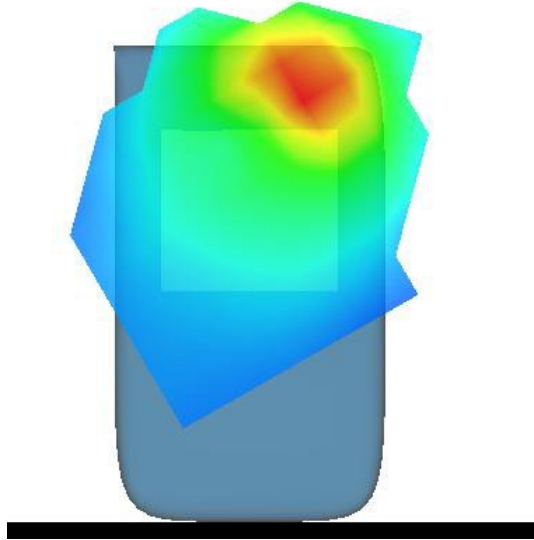
**Maximum location: X=-19.00, Y=12.00**

**SAR Peak: 0.51 W/kg**

|                       |          |
|-----------------------|----------|
| <b>SAR 10g (W/Kg)</b> | 0.156000 |
| <b>SAR 1g (W/Kg)</b>  | 0.289330 |

|            |        |        |        |        |        |        |        |
|------------|--------|--------|--------|--------|--------|--------|--------|
| Z (mm)     | 0.00   | 4.00   | 9.00   | 14.00  | 19.00  | 24.00  | 29.00  |
| SAR (W/Kg) | 0.5004 | 0.3056 | 0.1563 | 0.0817 | 0.0410 | 0.0213 | 0.0107 |



| 3D screen shot  | Hot spot position  |
|---|--|
|  |  |

## MEASUREMENT 16

Towards-ground- Middle

Type: Phone measurement (Complete)

Date of measurement :29/3/2023

Measurement duration: 9 minutes 32 seconds

### A. Experimental conditions.

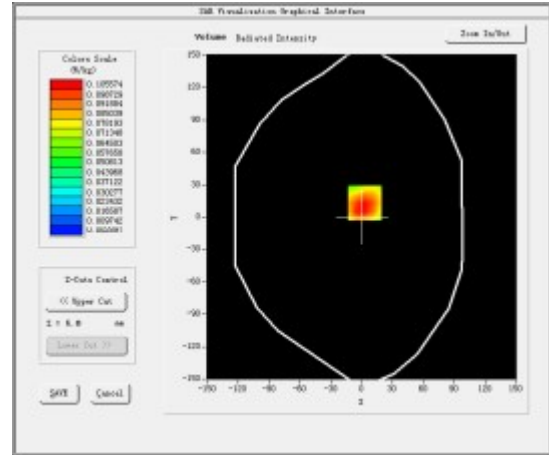
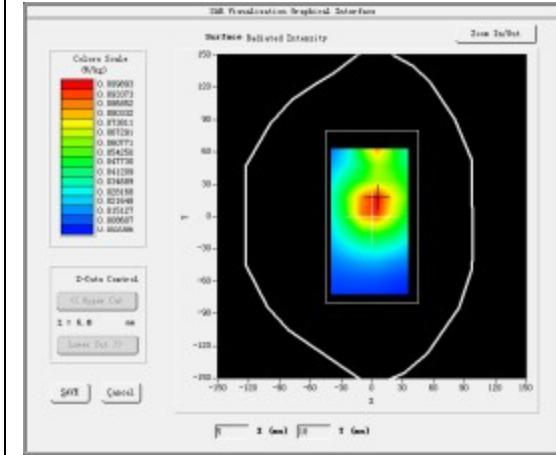
|                        |   |
|------------------------|---|
| <u>Area Scan</u>       | <u>dx=10mm dy=10mm</u>                                |
| <u>ZoomScan</u>        | <u>7x7x12,dx=4mm dy=4mm</u><br><u>dz=2mm,Complete</u> |
| <u>Phantom</u>         | <u>Validation plane</u>                               |
| <u>Device Position</u> | <u>Body</u>   |
| <u>Band</u>            | <u>IEEE 802.11a U-NII-4</u>                           |
| <u>Channels</u>        | <u>Middle</u>   |
| <u>Signal</u>          | <u>Duty cycle:1:1</u>                                 |

### B. SAR Measurement Results

|   |             |
|---|-------------|
| <b>Frequency (MHz)</b>                        | 5785.000000 |
| <b>Relative permittivity (real part)</b>      | 48.235748   |
| <b>Relative permittivity (imaginary part)</b> | 19.060800   |
| <b>Conductivity (S/m)</b>                     | 6.173560    |
| <b>Variation (%)</b>                          | 0.356000    |

### SURFACE SAR

### VOLUME SAR



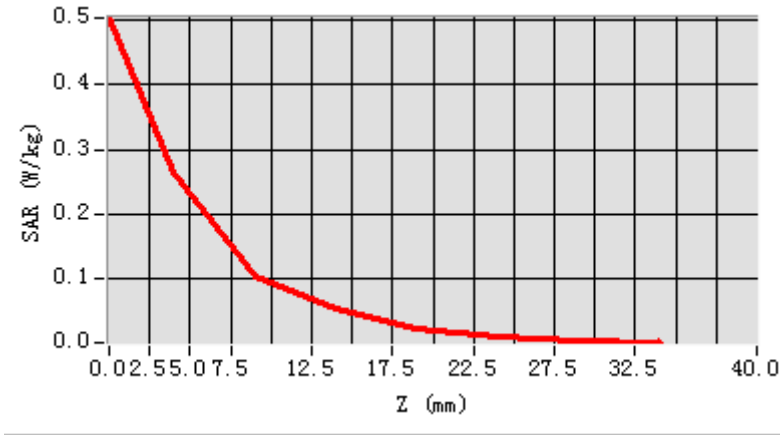
Maximum location: X=3.00, Y=13.00

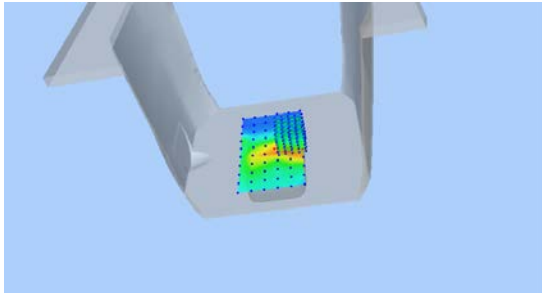
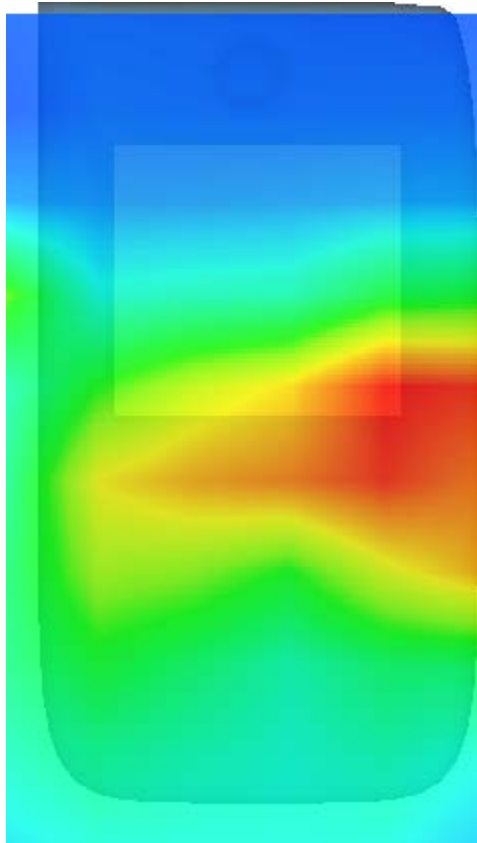
SAR Peak: 0.17 W/kg

|                |          |
|----------------|----------|
| SAR 10g (W/Kg) | 0.152330 |
| SAR 1g (W/Kg)  | 0.269220 |



|            |        |        |        |        |        |        |        |
|------------|--------|--------|--------|--------|--------|--------|--------|
| Z (mm)     | 0.00   | 4.00   | 9.00   | 14.00  | 19.00  | 24.00  | 29.00  |
| SAR (W/Kg) | 0.5035 | 0.2644 | 0.1036 | 0.0539 | 0.0226 | 0.0107 | 0.0050 |



| 3D screen shot  | Hot spot position  |
|---|--|
|  |  |