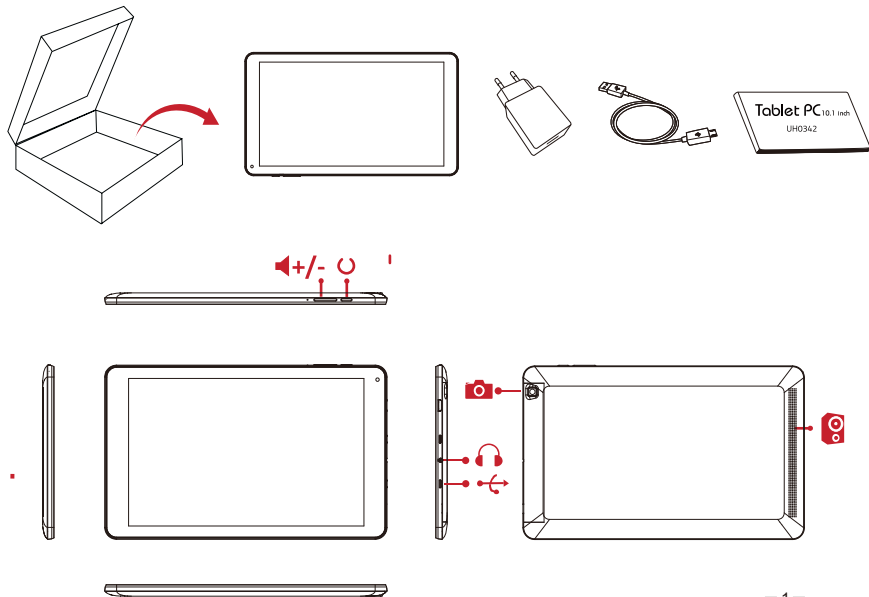




User Manual

1 Outer appearance and button introduction	-----	1
1.1 Hardware configurations	-----	3
1.2 software configuration	-----	3
2 Turn on/off MID	-----	4
3 Unlock or lock the touch screen	-----	4
4 Menu options	-----	4
5 The virtual keyboard and input method	-----	4
6 WIFI+BT(Optional Function)	-----	5
7 Network download the APK application and the game installation	-----	5
8 Charge description	-----	5
9 protect the machine and accessories	-----	6

1 Outer appearance and button introduction

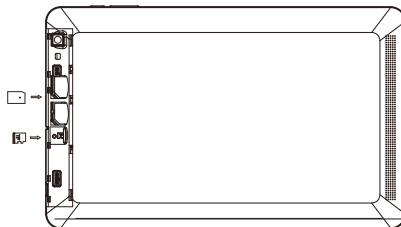


1 Outer appearance and button introduction

Standard SIM



Micro SIM Nano



1.3GHz Quad Core MTK8321



16 GB Flash+2GB RAM



Android™ 7.0 Nougat



260.97*160.97*10.6 mm(L*W*H)



Wi-Fi(802.11b/g/n)
Bluetooth 4.0+HS



10.1 IPS , 16:9, 1280*800



2.0MP(Front)+5.0MP(Rear)



Micro SDHC/SDXC
Up to 32 GB



520g (approx.)



GPS



5000 mAh



WCDMA	Band 1
	Band 2
	Band 5
GSM	Band 2
	Band 3
	Band 5
	Band 8

1.1 Hardware configurations

Size (L*W*H)	260.97*160. 97*10. 6 mm
CPU	MT8321 Quad core
Storage	16 GB
DDR	2G DDR3
TF Card slot	T-flash 128M-32G
Cameras	Dual Camera (front:2.0MP, Rear:5.0MP)
Display	10.1" capacitive multi touch
Resolution	800*1280
Working time	About 4-6 Hours
USB	USB 2.0
Speaker	Single speaker
G- sensor	Yes
I/O Port	USB 2.0 OTG support plug-in 3G/USB flash disk /mouse/keyboard/USB TF Card could up to 32GB 3.5mm stereo headphone DC5V mains input
WIFI	Build in WiFi 802.11b/g/n
Support bands	GSM: 850/900/1800/1900; WCDMA/HSDPA/HSUPA: 850/1900/2100 MHz

1.2 software configuration

Operation system	Android 7.0 Nougat
The browser	Chrome
Video	AVI (H.264, DIVX, DIVX, XVID, rm, rmvb, MKV (H.264, DIVX, DIVX, XVID), WMV, MOV, MP4 (H.264, MPEG, DIVX, XVID), MPEG, MPG, FLV (H.263, H.264)
Music	MP3,WMA,MP2,OGG,AAC, M4A, MA4,FLAC,APE,3GP,WAV
Picture	MJPEG, JPEG,JPG,BMP,GIF,PNG
Email	Email/Gmail
	Build in MIC

2 Turn on/off MID

- 1 Turn on : press the power button for 3-5 seconds
- 2 Turn off : press the power button for 3-5 seconds, choose "turn off -yes"

3 Unlock or lock the touch screen

- 1 Lock: short press the power button, the screen will enter the black screen and lock;
- 2 Unlock: short press the power button, the screen lights up, then the ring to "lock" direction of the slide to unlock

4 Menu options

- 1 Touch the " " In the main screen to enter the interface list;
- 2 Short press "Return" and return to the previous menu ;
- 3 Short press "HOME" and return to the main menu ;
- 4 Touch the in left bottom to view the recently taskbar.

5 The virtual keyboard and input method

- 1 - lick on any place at the input box;
- 2 - The virtual keyboard pop-up from the bottom;
- 3 - Press the input box for 3 seconds to switch the input method;

Note: Baidu input method can use Chinese handwriting input method, using different input method of the virtual keyboard is slightly different, the following explains only for Google Pinyin input method

- 4 - Touch to switch number and character;
- 5 - Touch to select the size of letters;
- 6 - Click on the "English" or "Chinese" to switch inputting English or Chinese;
- 7 - After the completion of the input and click "go" for sure.

6 WIFI+BT(Optional Function)

WI-FI access network operation steps:

1. Click into the "wireless network" and click the "WI-FI";
2. click on the "WI-FI settings";
3. Click on the WI-FI you need to connect to the network;
4. if necessary, insert the password in the pop-up dialog and click "connect".
5. Turn on BT—system automatically search the available BT equipment—choose the device you need—input the pass word to complete the match.

7 Network download the APK application and the game installation

1. The WIFI/3G network must be connected correctly;
2. Open any webpage search or download the suffix ".Apk" application / game, choose to install the APK application / game, there will be "Install" option, click "Install"; suggesting "downloading -- finished downloading, installing -- the installation is complete," this can open this application, can also be Click on the "uninstall", uninstall this program.

8 Charge description

Charger

A. output voltage: 5V

B. output current: 2000mA



Note: the charger specifications must meet the above specifications, or any failure or accident, the company is regarded as a man-made damage!

9 protect the machine and accessories

This machine is a complex electronic equipment, and can be used as a miniature computer. These tips can help to extend the service life of the machine.

- * the best equipment in a safe place, away from the water source to protect the machine and accessories;
- * use only original manufacturer in the production of machine parts, the parts without permission is likely to damage the machine, the machine service life shorten;
- * avoid by weight, fall from a height, not forced to run the machine;
- * If cannot turn on the new machine, please insert the charger to ensure whether it is lack of electronic quantity.
- * Details of the warranty and security warnings are as follows: .



This device complies with Part 15 of the FCC Rules. Operation is subject to the following two conditions: (1) this device may not cause harmful interference, and (2) this device must accept any interference received, including interference that may cause undesired operation.



As Utopia continuously updates and improves its products, your device's software and hardware may have a slightly different appearance or modified functionalities than those presented in this quick start guide.

Warranty and limited liability

This product is sold with a limited warranty and specific remedies are available to the original purchaser in the event the product fails to conform to the limited warranty. For detailed warranty terms, please visit:

Manufacturer shall not be liable for any special, incidental or consequential damages, even if informed of the possibility thereof in advance.

Warnings and safety precautions



Warning

- To prevent fire or shock hazard, do not expose your device to rain or moisture.
- Do not allow the device to come in close contact with a flame.
- Do not put, store or leave your device in or near sources of heat, in direct strong sunlight, in a high temperature location, in a pressurized container or in a microwave oven.
- When using this device, obey all laws and respect local customs, privacy and legitimate rights of others, including copyrights.



Safety

Handle your device with care

- Keep your product away from any sources of humidity. Do not manipulate your device with wet hands. Any damage done to the device due to its contact with water voids your warranty.
- Do not use or store your device in dusty or dirty areas.
- Do not use or store your device in extreme temperatures.
Environmental requirements:
Operating temperature: 32° to 95° F (0° to 35° C)
Nonoperating temperature: -4° to 113° F (-20° to 45° C)
- Do not drop, knock, or shake the device. Rough handling can break it.
- Do not paint your device. Paint can prevent proper operation.

Driving and walking safely

- You are responsible for knowing and obeying the laws and regulations regarding the use of wireless devices in the areas where you drive.
- Ensure that your device and its accessories do not block any air bags or other security devices fitted in your car.
- Do not use your device while walking or engaging in any activity that requires your full attention.

Avoid interference with other electronic products

- Keep the device away from magnets or magnetic fields.
- Your device radiates radio frequency (RF) signals that could interfere with the functioning of other electronic devices, such as pacemakers, hearing aids, or medical devices. Contact the manufacturer of the equipment to resolve any possible interference problems.

Small children

- Keep your device and its accessories out of the reach of small children. Small parts may cause choking or serious injury if swallowed.



Caution

your device

In calling upon nonqualified persons to repair your product, you run the risk of damaging your device and voiding your warranty.

by manufacturer

The use of incompatible accessories with the device, such as batteries and charger, can cause injury or damage your device.



Battery and charger caution

This device is equipped with a Lithium-ion or Lithium-ion polymer battery.

- Risk of explosion if battery is replaced by an incorrect type.
- Do not pierce, open, disassemble the battery, or use it in a humid and/

or corrosive environment. If a battery leaks, do not let liquid touch skin or eyes. If this happens, immediately flush the affected areas with water, or seek medical help.

- Do not expose the battery to temperatures over 45°C (113°F).
- Do not dispose of batteries in a fire as they may explode. Obey local regulations. Recycle when possible.
- Be careful to never crush or perforate the battery. Avoid exposing the battery to high external pressure which could provoke an internal short-circuit and overheating.

Avoiding hearing damage



To prevent possible hearing damage, do not listen at high volume levels for long periods.

Disposal and recycling



Correct disposal of the product

This product contains substances that are potentially dangerous to the environment and to human health. Therefore, you should hand it over to the applicable collection point for the recycling.



Correct disposal of the batteries

If your product contains a detachable battery pack, you should only dispose of it in a designated collection point for used batteries.

Tablet PC^{10.1 inch}

Warranty Card

Product: _____

Model name: _____

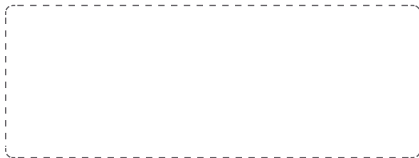
Serial No.: _____

Purchase date: _____

UH0342

Manufacturer's warranty period is 1 years from date of the sale in retail.

Warranty card is valid for service purposes only if fulfilled completely and stamped by seller.



English

Customer signature

1. Warning

This device complies with Part 15 of the FCC Rules. Operation is subject to the following two conditions: (1) this device may not cause harmful interference, and (2) this device must accept any interference received, including interference that may cause undesired operation. changes or modifications not expressly approved by the party responsible for compliance could void the user's authority to operate the equipment.

NOTE: This equipment has been tested and found to comply with the limits for a Class B digital device, pursuant to Part 15 of the FCC Rules. These limits are designed to provide reasonable protection against harmful interference in a residential installation. This equipment generates, uses and can radiate radio frequency energy and, if not installed and used in accordance with the instructions, may cause harmful interference to radio communications. However, there is no guarantee that interference will not occur in a particular installation.

If this equipment does cause harmful interference to radio or television reception, which can be determined by turning the equipment off and on, the user is encouraged to try to correct the interference by one or more of the following measures:

- Reorient or relocate the receiving antenna.
- Increase the separation between the equipment and receiver.
- Connect the equipment into an outlet on a circuit different

from that to which the receiver is connected.

-- Consult the dealer or an experienced radio/TV technician for help.

NOTE: This device and its antenna(s) must not be co-located or operation in conjunction with any other antenna or transmitter.

This device and its antenna(s) must not be co-located or operation in conjunction with any other antenna or transmitter. Changes or modifications to this unit not expressly approved by the party responsible for compliance could void the user's authority to operate the equipment.

RF Exposure Information:

The SAR limit of USA (FCC) is 1.6W/kg averaged over one gram of tissue. Device Types (FCC ID: 2AMXPGC289900) has also been tested against this SAR limit.

The highest SAR value reported under this standard during product certification for use when properly worn on the body is 0.713 W/kg and for head is 0.592W/kg. Simultaneous RF exposure is 1.312W/Kg.

To maintain compliance with FCC RF exposure requirements, use accessories that attain a 0mm separation distance

between the user's body and the back of the handset.

The use of belt clips, holsters and similar accessories should not contain metallic components in its assembly.

The use of accessories that do not satisfy these requirements may not comply with FCC RF exposure requirements, and should be avoided.

The use of belt clips, holsters and similar accessories

should not contain metallic components in its assembly.
The use of accessories that do not satisfy these requirements may not comply with FCC RF exposure requirements, and should be avoided.