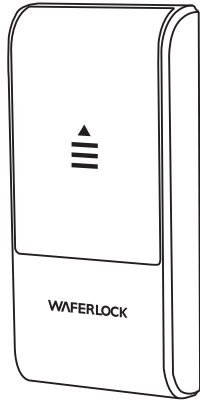
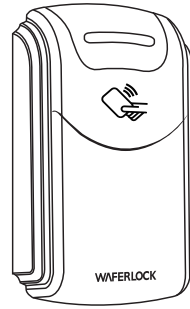


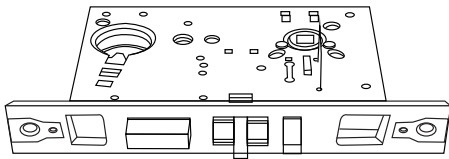
2 Inside control unit



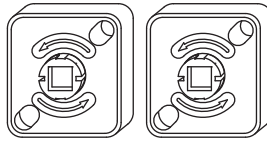
1 Front Reader



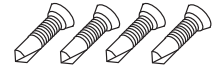
3 Electronic mortise



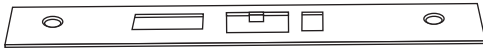
10 Spring cage



18 Fix Screws for Lip Plate & Mortise Lock



4 Side plate



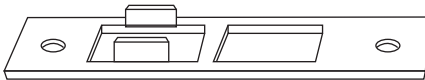
11 Mounting plate



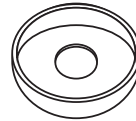
19 Lever screw



5 Lip Plate



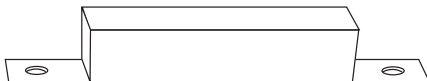
12 Inside rose



20 Mounting Screw (for control unit)



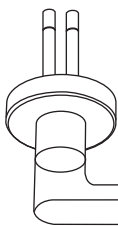
6 Dust-prove box



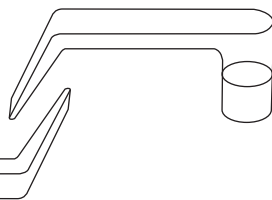
21 Mounting Screw (for plate)



7 Outside Lever



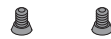
8 inside Lever



13 Spindle



22 Front reader slide cover screw



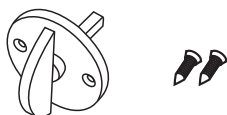
14 Lever spring



23 Stick screw



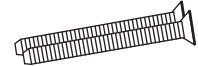
9 Thumb turn set with 2 screws



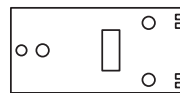
15 Outer lever ring



24 Screw (with stick screw)



16 Plate



25 ANSI cylinder with keys



17 Side plate screw



26 Batteries (AAA)



Federal Communication Commission Interference Statement

This equipment has been tested and found to comply with the limits for a Class B digital device, pursuant to Part 15 of the FCC Rules. These limits are designed to provide reasonable protection against harmful interference in a residential installation.

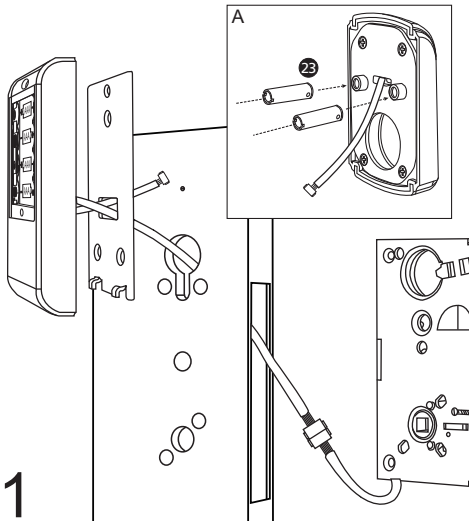
This equipment generates, uses and can radiate radio frequency energy and, if not installed and used in accordance with the instructions, may cause harmful interference to radio communications. However, there is no guarantee that interference will not occur in a particular installation. If this equipment does cause harmful interference to radio or television reception, which can be determined by turning the equipment off and on, the user is encouraged to try to correct the interference by one of the following measures:

- Reorient or relocate the receiving antenna.
- Increase the separation between the equipment and receiver.
- Connect the equipment into an outlet on a circuit different from that to which the receiver is connected.
- Consult the dealer or an experienced radio/TV technician for help.

FCC Caution: To assure continued compliance, any changes or modifications not expressly approved by the party responsible for compliance could void the user's authority to operate this equipment. (Example - use only shielded interface cables when connecting to computer or peripheral devices).

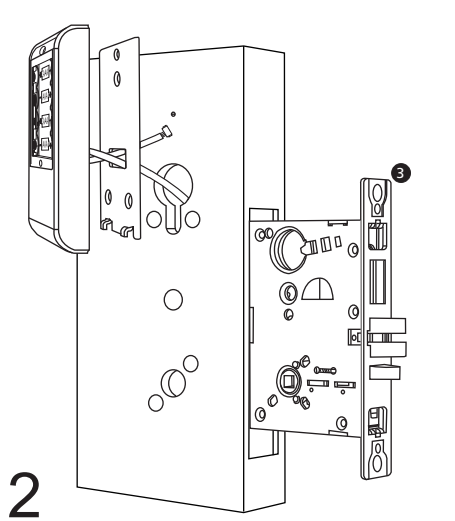
This device complies with Part 15 of the FCC Rules. Operation is subject to the following two conditions:

- (1) This device may not cause harmful interference, and
- (2) This device must accept any interference received, including interference that may cause undesired operation.



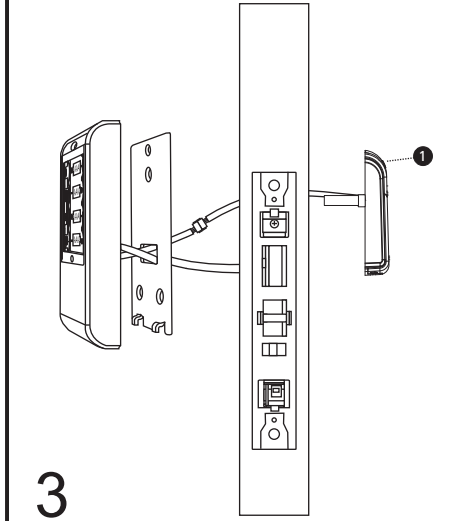
1

- A. Fasten two stick screws 23 to reader case.
- B. Pull the inside control unit cables through plate.
- C. Connect cables between control unit and mortise.



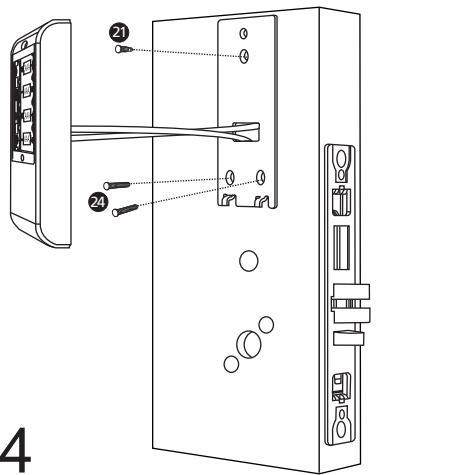
2

- Slide the mortise into the door, and please be careful if the cable is clipped or connector is disconnected.



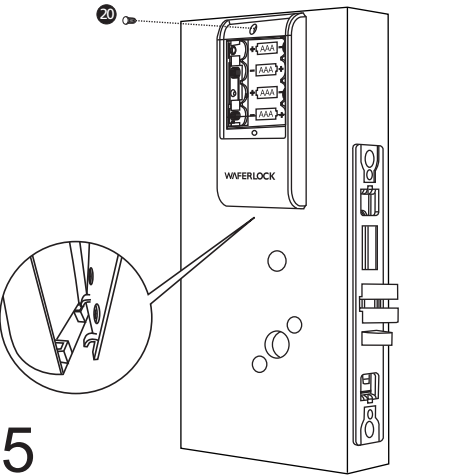
3

- A. Pull the front reader cable through the door and on top of mortise. Stick screws match the holes on the door.
- B. Connect cables between the front reader and control unit.



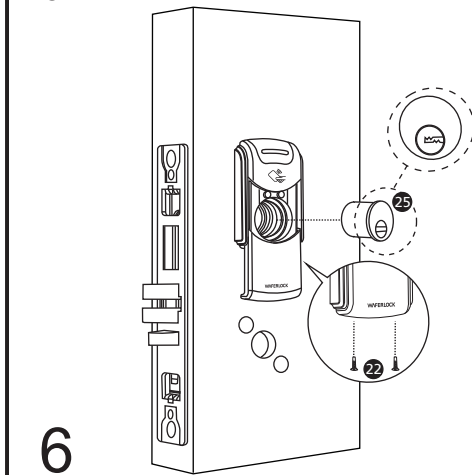
4

- A. Fasten the plate and front reader with screws 24
- B. Fasten the mounting screw 21



5

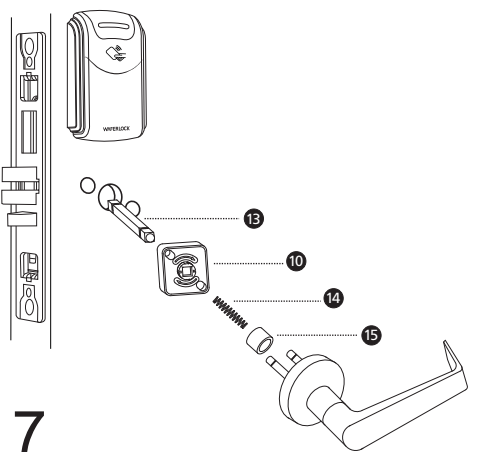
- A. Stuff the extra cables into the door.
- B. Slide the control unit from the bottom up and fasten it on the plate.
- C. Fasten the mounting screw 20 for the control unit.



6

- A. Install the ANSI cylinder 25
- B. Fasten the slide cover screws 22

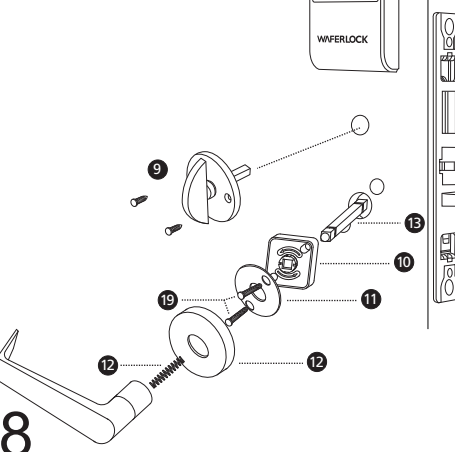
Outside Lever



7

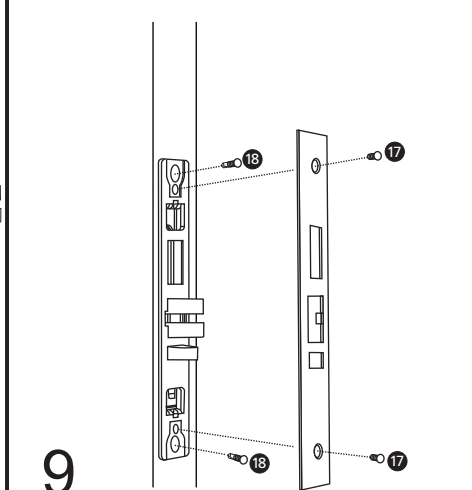
- A. Place spring cage 10 onto outside lever assembly with arrows pointing in direction of lever rotation. Insert spindle 13 into hub of lock case.
- B. Position outside lever assembly into post holes of lock case.

Inside Lever



8

- A. Insert spindle into hub of lock case.
- B. Place spring cage with arrows pointing in direction of lever rotation and mounting plate (spring-mount assembly) onto lock case and fasten with screws.
- C. Cap inside rose over spring-mount assembly.
- D. Insert inside spring into lever hole and tighten inside lever bushing with spanner wrench.
- E. Insert turn piece assembly and fasten with screws.



9

- Fasten the mortise screws and cover by side plate