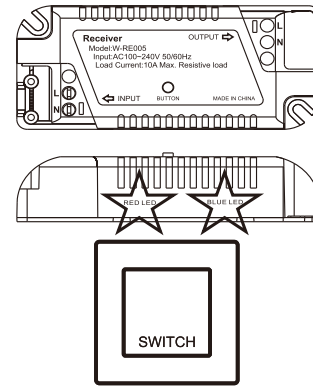


SWITCH / RECEIVER

Smart panel switch kit Compatible with Amazon Alexa and Google Assistant for voice control

Thank you for choosing our product.
Our panel switch kit is connected to the Internet through the 2.4G WIFI wireless network. You can control this product from any network connected to the mobile APP, check the open or off state of the panel, and control the electrical appliances installed on the receiver, such as fans, lights, water heaters, fountain and so on. Also, you can use a matching panel to control.
Our panel switch kit has timing switch function, countdown switch function.
After connecting Amazon Alexa or Google Assistant, we can use voice to control the receiver.

Please read the instructions before using it.
Identification of parts:



2

Specification:

Input power: AC100~240V 50/60Hz
Load current: resistive load, maximum 10A
WIFI standard: 2.4G 802.11 b/g/n
Working temperature: -20℃~ +50℃
Telecontrol distance: indoor 15m

Usage:

Preparatory work:
1. Disconnect the power at home.
2. Connect the receiver to the device to be controlled as shown INPUT is power access. OUTPUT is the power output. L is the hot line.

Steps one for the receiver to the RF configuration (panel switch and receiver pairing):

3

1. Press the receiver button for about 2 seconds, and release the button when the receiver blue indicator lights up;
2. Press the button on the panel switch, and the receiver blue light flashes, indicating that the receiver has associated the panel switch. (if you need to associate more panel switches for the receiver, repeat step 2. Up to 4 panel switches can be associated with one receiver, and up to 4 receivers can be associated with a panel switch.).
3. After the panel switch is configured, press the receiver button to exit the RF configuration. The panel switch is now available to control the ON/OFF of the receiver.

Steps two for the receiver to the network configuration:

4

1.Download APP

Please scan the QR code to download App:



For IOS



For Android

You can also search for "Smart Life" on App Store or Google Play.

2.Register App:

>>Running the APP

>>Enter your account and password to log in. If you are using it for the first time, please register an account.

3.APP configuration:

Please make sure that the plug and mobile phone are used under the same 2.4G WIFI network coverage, and plug in our smart plug.

5

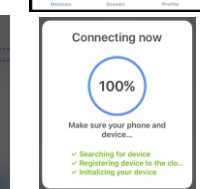
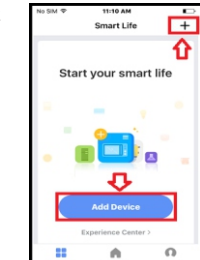
A.Easy mode:

>>Method One: hold the button over 5 seconds until indicator rapidly blink(2 times per second). If not, try it again.

>> Method Two: Quickly press the panel switch 6 times within 3 seconds and the receiver will beep. Wait for the beep to stop and the receiver red indicator flashes rapidly (2 times per second). If the indicator light is not flashing, please press the panel switch 6 times again within 3 seconds. (If the receiver is installed in an invisible location, you can proceed to the next step after the buzzer stops. If the receiver is not configured, repeat this method and then configure it.)

6

>>Open the APP , click "Add Device" or "+" icon to add device, select "Wall switch" .
>>Click the " Confirm indicator rapidly Blink" , select the WIFI of the current mobile connection, enter the WIFI password, and click "Confirm".



7

>>When the configuration is completed, the indicator light stops flashing.

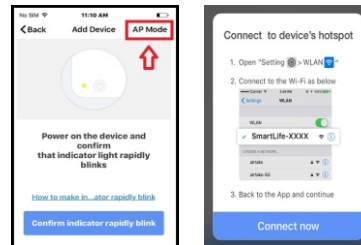
B. AP Mode:

>>Method One: Hold the button 5 seconds until indicator light is slowly flashing(1 times every 3S).If not, try it again.

>> Method Two: Quickly press the panel switch 6 times within 3 seconds and the receiver will beep. Wait for the beep to stop and the receiver red indicator flashes slowly (one time 3 second). If the indicator light is not slow flashing, please press the panel switch 6 times again within 3 seconds. (If the receiver is installed in an invisible location, you can proceed to the next step after the buzzer stops. If the receiver is not configured, repeat this method and then configure it.)

8

>>Click the "AP Mode", then click "Confirm indicator slowly blink", select the WIFI of the current mobile connection, enter the WIFI password, and click "Confirm".



>>Click "Connect now", select "Smart Life-XXXX" and then back to APP.

9

>> When the configuration is completed, the indicator light stops flashing.

4.Timer & Countdown function

Click to set time for ON/OFF.

5.Manual control

Control the opening and closing of the switch by pressing the panel switch by hand

6.Restore Manufacturer Defaults

If you need to restore manufacturer defaults, please hold the button over 5 seconds until indicator flashing quickly. If not, try it again.

7.Other

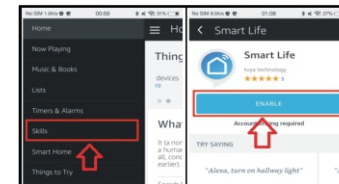
Click "... " and you will see:
"Modify Device Name "
"Device Sharing" , "Check for Firmware Update"
"Remove device" , "Restore Manufacturer Defaults"

10

How to sync With Amazon Echo

1.Link Smart life account to Echo

>>Go to Home menu on Alexa App.
>>Select "Skills" in Home menu, search "Smart Life" on search window, select "Smart Life" and tap "Enable" to enable the Smart Life skill.
>>In link page, type in your Smart Life account & password and tap "link now" to link your Smart life account. Wait until "Alexa has been successfully linked with Smart Life" appears, it indicates that the "Skills" is successful.



11

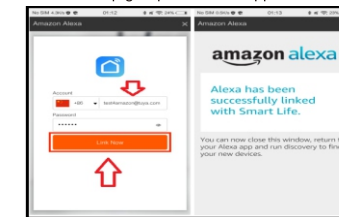
2.Control smart devices through Echo

>>Echo needs to discover your smart devices before it controls them. You can say "Alexa, discover devices" to Echo, Echo will discover devices in about 20 seconds.

Now, you can control your smart devices through Echo: "Alexa, turn on/off bedroom light"

Note:

>>If you changed the device's name on Smart Life APP, Echo must re-discover it before you control them.
>>You can set up groups on Alexa App to control.



12

Warning:

- Receiver must be connected properly in circuitry.
- Do not insert a conductor or other tools to the socket hole.
- If there is radio frequency interference, it might affect the operation.
- Indoor use only.
- Do not use in bathroom and other damp locations.
- Please ensure the security of the electricity, resistive load current can't be higher than 10A.
- Please keep the device out of the reach of children to avoid danger.

13

FCC WARNING:

This device complies with part 15 of the FCC Rules. Operation is subject to the following two conditions: (1) this device may not cause harmful interference, and (2) this device must accept any interference received, including interference that may cause undesired operation. Any changes or modifications not expressly approved by the party responsible for compliance could void the user's authority to operate the equipment.

NOTE: This equipment has been tested and found to comply with the limits for a Class B digital device, pursuant to Part 15 of the FCC Rules. These limits are designed to provide reasonable protection against harmful interference in a residential installation. This equipment generates, uses and can radiate radio frequency energy and, if not installed and used in accordance with the instructions, may cause harmful interference to radio communications.

14

However, there is no guarantee that interference will not occur in a particular installation. If this equipment does cause harmful interference to radio or television reception, which can be determined by turning the equipment off and on, the user is encouraged to try to correct the interference by one or more of the following measures:

- Reorient or relocate the receiving antenna.
- Increase the separation between the equipment and receiver.
- Connect the equipment into an outlet on a circuit different from that to which the receiver is connected.
- Consult the dealer or an experienced radio/TV technician for help.

To maintain compliance with FCC's RF Exposure guidelines, This equipment should be installed and operated with minimum 20cm distance between the radiator your body: Use only the supplied antenna.

15