

1. Using this manual

Thank you for choosing this mobile device.

This device will provide you with high-quality mobile communication and entertainment based on exceptional technology and high standards.

This manual has been specially designed to guide you through the functions and features of your device.

1.1 Read me first

- Before using your device, read the entire manual and all safety instructions to ensure safe and proper use.
 - The descriptions in this manual are based on the default settings of your device.
 - The images and screenshots used in this manual may differ from the actual product.
 - The contents of this manual may differ from the product, or from software provided by service providers or carriers, and are subject to change without prior notice.
 - Available features and additional services may vary by device, software, or service provider.
 - Formatting and delivery of this manual is based on Android operating systems and may vary depending on the user's operating system Version.
 - Applications on this device may perform differently from functions available in the computer version of the operating system.
-
-

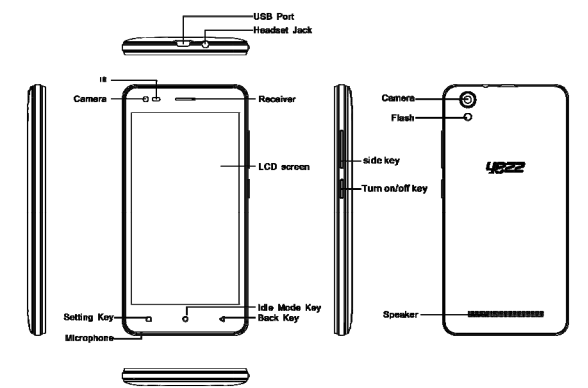
2. Assembling

2.1 General information



The phone is a dual SIM phone that encloses features, such as **Android version 7.0 Nougat**, **Wi-Fi**, etc. This phone is provided with two SIM slots for two different SIM cards. The SIM card inserted in the slot1 is called SIM1, and the other one in the slot2 is known as SIM2. You can select to operate SIMs as per your needs.

2.2 Phone Overview



2.3 Insert the SIM card

Insert the SIM card when you need a cellular service. Do not insert a memory card into the SIM card slot.

2.4 Charge the battery

Before using the device for the first time or when the battery has been unused for an extended period, you must fully charge the battery.

- Use only our approved chargers and cables. Unapproved chargers or cables may cause batteries to explode or damage your device.

2.5 Insert a memory card

Your device accepts micro SD. Memory cards with maximum capacities of 32 GB. When you insert a memory card into your device, the memory card's file directory will appear in the SD card folder.

3. Getting started

3.1 Turn on or off your device

Press and hold the Turn on/off key.

3.2 Use the touch screen

Your device's touch screen lets you easily select items or perform functions. Learn basic actions for using the touch screen.



3.3 Lock or unlock the touch screen and the keys

Your device will go in standby mode when you do not use it for a specified period. To turn on the screen, press the Turn on/off key.

●to set standby time, select Settings →Display →Sleep.

3.4 Get to know the Home screen

From the Home screen, you can view your device's status and access applications.

The Home screen has multiple panels. Scroll left or right to view the panels on the Home screen.

Move an item on the Home screen

Tap and hold an item, and then drag it to a new location.

3.5 Access applications

Launch applications and take full advantage of features on your device. You can reorganize the application list to match your preferences, or download applications from the Internet to enhance your device's functionality.

3.6 Launch multiple applications

Your device allows you to multitask by running multiple applications at the same time. To launch multiple applications, select another application to launch from the Home screen.




4. Communication

4.1 Calling



Make a call

1 In the application list, select Phone →Keypad, and then enter an area code and a phone number.

2 Select  to make a voice call.

3 Select  to end the call.

Answer a call

1 During an incoming call, Select  drag your finger to outside of the large circle then select .


To mute the ringtone, press the side key.

2 Select  to end the call.

4.2 Messages



Learn to create and send text (SMS) or multimedia (MMS) messages, and view or manage messages that you have sent or received.

Send a text message

1 In the application list, select Messaging →.

2 Add recipients:

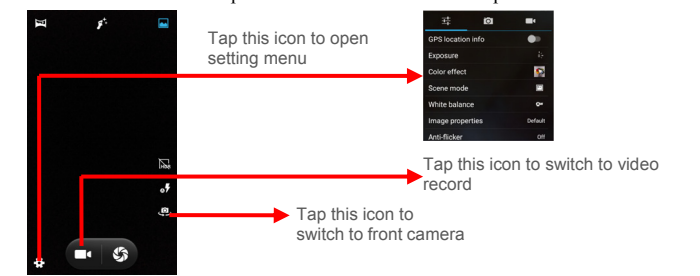


- Enter phone numbers manually and separate them with a semicolon or a comma.
 - Select phone numbers from your contact lists by selecting 
- 3 Select the text field and enter your message text.
- 4 To send the message, select 


5. Entertainment

5.1 Camera

Learn how to take and view photos and videos. You can take photos and record videos.




Take a photo

- 1 In the application list, select Camera.
- 2 Aim the camera lens at the subject and make
- 3 Select  to take a photo.

The photo is saved automatically.

Record a video

- 1 In the application list, select Camera.
- 2 Aim the lens at the subject and make any necessary adjustments.
- 3 Select  to start recording.

5.2 Music player

Learn to listen to your favorite music while on the go.

Add music files to your device

Start by transferring files to your device or memory card:

- Download from the internet.
- Download from a computer with Windows Media Player.
- Receive via Bluetooth.
- Copy to your memory card.

Play music

- 1 In the application list, select Play Music.
- 2 Select a music category → a music file.

6. Tools

6.1 Calculator

Learn to perform calculations with your device.

Perform a calculation

- 1 In the application list, select Calculator.
- 2 Use the keys on the screen to perform basic calculations.

6.2 Clock

Set an alarm

- 1 In the application list, select Clock → Alarm.
- 2 Select Add alarm.
- 3 Set the details of the alarm.
- 4 When you are finished, select OK.

Stop an alarm

When the alarm sounds,

- To stop the alarm, select Dismiss
 - To silence the alarm for the snooze period, select Snooze.
-

6.3 Calendar

You can open Calendar to view and manage the events you have created. Touch Menu icon do the following operations: New event, Refresh, Search, Calendars to display and Settings.

7. Settings

Access the setting options

- 1 In the application list, select Settings.
- 2 Select a setting category, and then select an option.

8. E-waste disposable mechanism

'E-waste' means waste electrical and electronic equipment (WEEE). In other words E-waste is a popular, informal name for electronic products nearing the end of their "useful life".

Do's and Don'ts for disposal e-waste

Do's:

- a. Ensure that an Authorized Person repairs your products
 - b. Call Our Local Authorized Collection Centers to Dispose products.
 - c. Always drop your used electronic products, batteries or any accessories thereof after the end of their life at nearest Authorized Collection Point or Collection Center.
-
-

- d. Separate the packaging material according to responsible waste disposal options and sorting for recycling.
- e. Always remove the battery from the product, when you do not intend to use the product anymore it in future.

Don'ts:

- a. Do not Dismantle your product on your own.
 - b. Do not give your e-waste to Scrap Dealer/ Rag Pickers.
 - c. Do not dispose-off the e-waste in landfills.
 - d. Never dump E-waste in garbage bins.
 - e. Do not dispose of your product at municipal waste bins or rooms.
 - f. Do not throw used batteries into household waste.
 - g. Consequences of improper handling and disposal of E-Waste.
-
-

Caution:

Any Changes or modifications not expressly approved by the party responsible for compliance could void the user's authority to operate the equipment.

This device complies with part 15 of the FCC Rules. Operation is subject to the following two conditions: (1) This device may not cause harmful interference, and (2) this device must accept any interference received, including interference that may cause undesired operation.

Note: This equipment has been tested and found to comply with the limits for a Class B digital device, pursuant to part 15 of the FCC Rules. These limits are designed to provide reasonable protection against harmful interference in a residential installation. This equipment generates, uses and can radiate radio frequency energy and, if not installed and used in accordance with the instructions, may cause harmful interference to radio communications. However, there is no guarantee that interference will not occur in a particular installation. If this equipment does cause harmful interference to radio or television reception, which can be determined by turning the equipment off and on, the user is encouraged to try to correct the interference by one or more of the following measures:

—Reorient or relocate the receiving antenna.

—Increase the separation between the equipment and receiver.

—Connect the equipment into an outlet on a circuit different from that to which the receiver is connected.

—Consult the dealer or an experienced radio/TV technician for help.

SAR tests are conducted using standard operating positions accepted by the FCC with the phone transmitting at its highest certified power level in all tested frequency bands, although the SAR is determined at the highest certified power level, the actual SAR level of the phone while operating can be well below the maximum value. Before a new model phone is available for sale to the public, it must be tested and certified to the FCC that it does not exceed the exposure limit established by the FCC, tests for each phone are performed in positions and locations as required by the FCC.

For body worn operation, this 5E has been tested and meets the FCC RF exposure guidelines when used with an accessory designated for this product or when used with an accessory that contains no metal and that positions the handset a minimum of 10mm from the body.

Non-compliance with the above restrictions may result in violation of RF exposure guidelines
