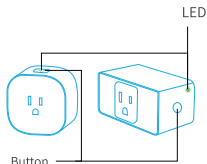


LED and Button Rules



Button
Press to turn the socket ON or OFF.
Press and hold (for 5 seconds) until LED is lit a solid amber to initiate factory reset process.

LED

- Solid amber:** Initialization/ Reset/ Firmware upgrading mode.
- Flashing amber and green slowly:** Configuration mode.
- Flashing green rapidly:** Wi-Fi connecting mode.
- Solid green:** Successfully connected, and the socket is at ON status.
- Solid red:** No Internet connection, and the socket is at ON status.
- Off:** The socket is at OFF status or the Meross Smart Plug is powered off.

Frequently Asked Questions

At Meross we strive to assure your satisfaction. We apologize for any inconvenience with the installation or operation of the switch and are happy to assist at support@meross.com.

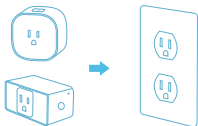
- 1 What devices can I control with the Meross Smart Plug?**
You can control any small electric appliances in accordance with Meross Smart Plug's specification (up to 15A output). Below are some typical appliances' maximum power supported by Meross Smart Plug.
Coffee Maker: 800 W Desk Lamp: 235.2 W
LCD: 270 W Heater: 1500 W
Humidifier: 260 W Iron: 1500 W
Toaster: 850 W Tower Fan: 50 W
- 2 What should I do when the LED is lit a solid red?**
A solid red indicates no internet connection.
You can troubleshoot the following:
 - Check the main Wi-Fi's internet connection.
 - Make sure that main Wi-Fi's password hasn't been changed.
 - Make sure your Meross Smart Plug is not too far from the main Wi-Fi.
 - Factory reset Meross Smart Plug and try to add it again.
- 3 How do I pair my Meross devices with Amazon Alexa or Google Assistant?**
Visit Account->Amazon Alexa or Google Assistant page within Meross app for pairing instructions.

Quick Installation Guide

- 1 Download the Meross app.

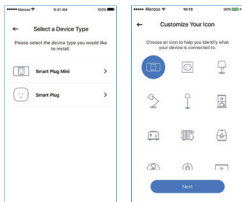


- 2 Plug Meross Smart Plug into an outlet near main Wi-Fi.*



- * Proximity to main Wi-Fi is required only during the initial setup process.
- * Meross Smart Plug only supports 2.4GHz networks.

- 3 Open Meross app and simply follow the setup wizard for configuration.



- 4 Relocate Meross Smart Plug into a desired outlet, no configuration is required.

FCC compliance information statement

changes or modifications not expressly approved by the party responsible for compliance could void the user's authority to operate the equipment. This device complies with Part 15 of the FCC Rules. Operation is subject to the following two conditions:

- (1) this device may not cause harmful interference, and
- (2) this device must accept any interference received, including interference that may cause undesired operation.

Note: This equipment has been tested and found to comply with the limits for a Class B digital device, pursuant to Part 15 of the FCC Rules. These limits are designed to provide reasonable protection against harmful interference in a residential installation. This equipment generates, uses, and can radiate radio frequency energy, and if not installed and used in accordance with the instructions, may cause harmful interference to radio communications. However, there is no guarantee that interference will not occur in a particular installation. If this equipment does cause harmful interference to radio or television reception, which can be determined by turning the equipment off and on, the user is encouraged to try to correct the interference by one or more of the following measures:

- Reorient or relocate the receiving antenna.
- Increase the separation between the equipment and receiver.
- Connect the equipment into an outlet on a circuit different from that to which the receiver is connected.
- Consult the dealer or an experienced radio/TV technician for help.

This equipment complies with FCC radiation exposure limits set forth for an uncontrolled environment. This equipment should be installed and operated with a minimum distance of 20cm between the radiator & your body. This transmitter must not be co-located or operating in conjunction with any other antenna or transmitter.

Canadian Compliance Statement

This device contains licence-exempt transmitter(s)/receiver(s) that comply with Innovation, Science and Economic Development Canada's licence-exempt RSS(s). Operation is subject to the following two conditions:

- (1) This device may not cause interference.
- (2) This device must accept any interference, including interference that may cause undesired operation of the device.

L'émetteur/récepteur exempt de licence contenu dans le présent appareil est conforme aux CNR d'Innovation, Sciences et Développement économique Canada applicables aux appareils radio exempts de licence. L'exploitation est autorisée aux deux conditions suivantes :

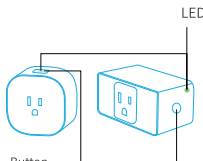
- 1) L'appareil ne doit pas produire de brouillage;
- 2) L'appareil doit accepter tout brouillage radioélectrique subi, même si le brouillage est susceptible d'en compromettre le fonctionnement.

The device meets the exemption from the routine evaluation limits in section 2.5 of RSS 102 and compliance with RSS-102 RF exposure, users can obtain Canadian information on RF exposure and compliance.

Le dispositif rencontre l'exemption des limites courantes d'évaluation dans la section 2.5 de RSS 102 et la conformité à l'exposition de RSS-102 rf, utilisateurs peut obtenir l'information canadienne sur l'exposition et la conformité de rf.

This transmitter must not be co-located or operating in conjunction with any other antenna or transmitter. This equipment should be installed and operated with a minimum distance of 20 centimeters between the radiator and your body. Cet émetteur ne doit pas être Co-placé ou ne fonctionnant en même temps qu'aucune autre antenne ou émetteur. Cet équipement devrait être installé et actionné avec une distance minimum de 20 centimètres entre le radiateur et votre corps.

LED and Button Rules



Button
Press to turn the socket ON or OFF.
Press and hold (for 5 seconds) until LED is lit a solid amber to initiate factory reset process.

LED
Solid amber: Initialization/ Reset/ Firmware upgrading mode.
Flashing amber and green slowly: Configuration mode.
Flashing green rapidly: Wi-Fi connecting mode.
Solid green: Successfully connected, and the socket is at ON status.
Solid red: No Internet connection, and the socket is at ON status.
Off: The socket is at OFF status or the Meross Smart Plug is powered off.

Frequently Asked Questions

At Meross we strive to assure your satisfaction. We apologize for any inconvenience with the installation or operation of the switch and are happy to assist at support@meross.com.

1 What devices can I control with the Meross Smart Plug?

You can control any small electric appliances in accordance with Meross Smart Plug's specification (up to 15A output). Below are some typical appliances' maximum power supported by Meross Smart Plug.

Coffee Maker: 800 W	Desk Lamp: 235.2 W
LCD: 270 W	Heater: 1500 W
Humidifier: 260 W	Iron: 1500 W
Toaster: 850 W	Tower Fan: 50 W

2 What should I do when the LED is lit a solid red?

A solid red indicates no internet connection.

You can troubleshoot the following:

- Check the main Wi-Fi's internet connection.
- Make sure that main Wi-Fi's password hasn't been changed.
- Make sure your Meross Smart Plug is not too far from the main Wi-Fi.
- Factory reset Meross Smart Plug and try to add it again.

3 How do I pair my Meross devices with Amazon Alexa or Google Assistant?

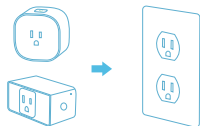
Visit Account->Amazon Alexa or Google Assistant page within Meross app for pairing instructions.

Quick Installation Guide

1 Download the Meross app.



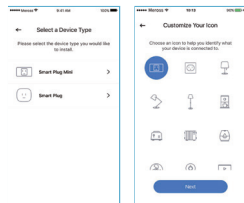
2 Plug Meross Smart Plug into an outlet near main Wi-Fi.*



* Proximity to main Wi-Fi is required only during the initial setup process.

* Meross Smart Plug only supports 2.4GHz networks.

3 Open Meross app and simply follow the setup wizard for configuration.



4 Relocate Meross Smart Plug into a desired outlet, no configuration is required.

FCC compliance information statement

changes or modifications not expressly approved by the party responsible for compliance could void the user's authority to operate the equipment. This device complies with Part 15 of the FCC Rules. Operation is subject to the following two conditions:

- (1) this device may not cause harmful interference, and
- (2) this device must accept any interference received, including interference that may cause undesired operation.

Note: This equipment has been tested and found to comply with the limits for a Class B digital device, pursuant to Part 15 of the FCC Rules. These limits are designed to provide reasonable protection against harmful interference in a residential installation. This equipment generates, uses, and can radiate radio frequency energy, and if not installed and used in accordance with the instructions, may cause harmful interference to radio communications. However, there is no guarantee that interference will not occur in a particular installation. If this equipment does cause harmful interference to radio or television reception, which can be determined by turning the equipment off and on, the user is encouraged to try to correct the interference by one or more of the following measures:

- Reorient or relocate the receiving antenna.
- Increase the separation between the equipment and receiver.
- Connect the equipment into an outlet on a circuit different from that to which the receiver is connected.
- Consult the dealer or an experienced radio/TV technician for help.

This equipment complies with FCC radiation exposure limits set forth for an uncontrolled environment. This equipment should be installed and operated with a minimum distance of 20cm between the radiator & your body. This transmitter must not be co-located or operating in conjunction with any other antenna or transmitter.

Canadian Compliance Statement

This device contains licence-exempt transmitter(s)/receiver(s) that comply with Innovation, Science and Economic Development Canada's licence-exempt RSS(s). Operation is subject to the following two conditions:

- (1) This device may not cause interference.
- (2) This device must accept any interference, including interference that may cause undesired operation of the device.

L'émetteur/récepteur exempt de licence contenu dans le présent appareil est conforme aux CNR d'Innovation, Sciences et Développement économique Canada applicables aux appareils radio exempts de licence. L'exploitation est autorisée aux deux conditions suivantes:

- 1) L'appareil ne doit pas produire de brouillage;
- 2) L'appareil doit accepter tout brouillage radioélectrique subi, même si le brouillage est susceptible d'en compromettre le fonctionnement.

The device meets the exemption from the routine evaluation limits in section 2.5 of RSS 102 and compliance with RSS-102 RF exposure, users can obtain Canadian information on RF exposure and compliance. Le dispositif rencontre l'exemption des limites courantes d'évaluation dans la section 2.5 de RSS 102 et la conformité à l'exposition de RSS-102 rf, utilisateurs peut obtenir l'information canadienne sur l'exposition et la conformité de rf.

This transmitter must not be co-located or operating in conjunction with any other antenna or transmitter. This equipment should be installed and operated with a minimum distance of 20 centimeters between the radiator and your body. Cet émetteur ne doit pas être Co-placé ou ne fonctionnant en même temps qu'aucune autre antenne ou émetteur. Cet équipement devrait être installé et actionné avec une distance minimum de 20 centimètres entre le radiateur et votre corps.

MSS110 210 310

*本页校对专用, 不做印刷

meross
成都瓦瑞科技有限公司

型号	品名	料号
MSS420F	美规通用版QIG	6102000009-190516

版本更新记录:

日期	内容
20181115	首稿
20190516	添加FCC认证内容

印刷说明:

1. 尺寸: 115*65mm
2. 双面印刷+4色印刷+表面哑膜 120g/单页

设计: 邓龙

校对: 曹俊、林文龙

批准: 田伟

日期: 20190516

对折页



正面



背面