

## LABEL SPECIFICATION

---

2017-11-13 14:22 | R5

# Push Button US

### Customer

---

Tracknet

### Flex

---

Flextronics International Sweden AB  
Datalinjen 3A  
SE-583 30 Linköping  
Sweden  
+46 (13) 287000

Flextronics Contact:  
Christian Hollowell  
+46 (13) 287112

### Revision History

Rev.	Author	Change Description	Date	Status
R1	Linus Kihlberg	Information on Pushbutton US moved from "LS-FPRO 100 02 C – Label Specification"	2017-11-13	Released

Table 1 Revision History



## TABLE OF CONTENTS

<b>1</b>	<b>INTRODUCTION .....</b>	<b>4</b>
1.1	PURPOSE.....	4
1.2	REFERENCES.....	4
<b>2</b>	<b>LABEL SPECIFICATION .....</b>	<b>5</b>
2.1	PCBA SERIAL NUMBER LABEL .....	5
2.1.1	<i>US Version</i> .....	5
2.1.2	<i>Label Placement</i> .....	6
2.2	UNIT LABEL.....	7
2.2.1	<i>US Version Permanent Label</i> .....	7
2.2.2	<i>Removable Label</i> .....	8
2.2.3	<i>Label Placement</i> .....	9
2.3	CARTON BOX LABEL .....	10
2.3.1	<i>US version</i> .....	10
2.3.2	<i>Label Placement</i> .....	11
2.4	PALLET LABEL .....	12
2.4.1	<i>US version</i> .....	12
2.4.2	<i>Label Placement</i> .....	12



## 1 INTRODUCTION

### 1.1 PURPOSE

The purpose of this document is to define all labels for the Push button US product

### 1.2 REFERENCES

Ref.	Document title	Document number
[1]	TrackNet_Machine_Codes.pdf	NA
[2]	Tabs.svg	NA

**Table 2: References**

## 2 LABEL SPECIFICATION

### 2.1 PCBA SERIAL NUMBER LABEL

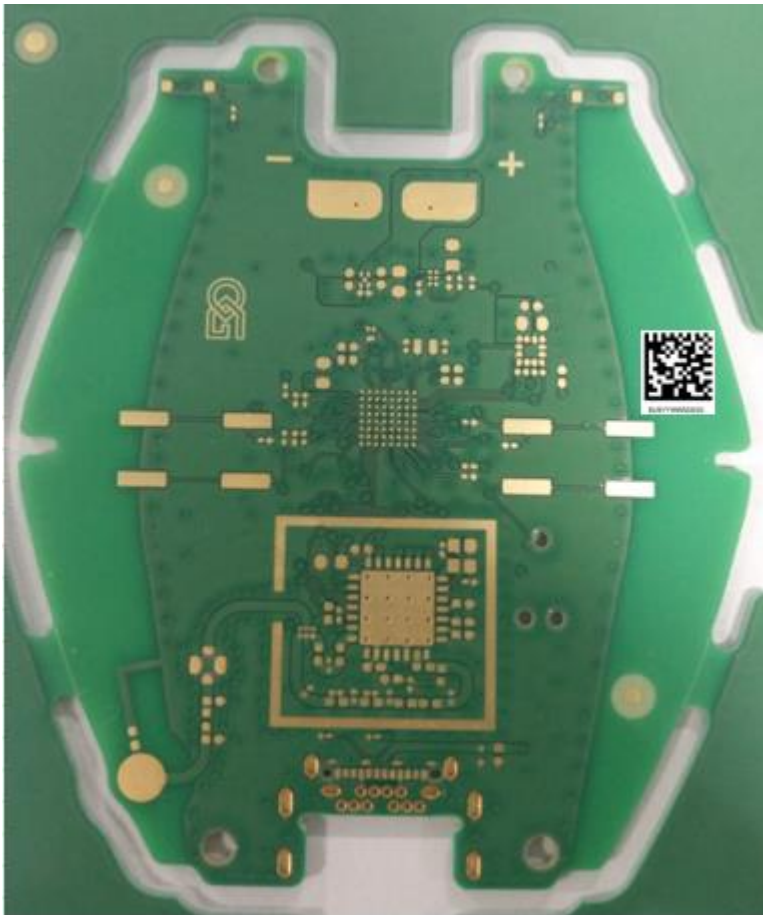
#### 2.1.1 US VERSION

Part Number: NA  
 Dimension: 3.5mm X 3.5mm  
 Font: Arial, 4 pt  
 Color: will print on board by laser etch  
 Adhesive: NA  
 Material: NA



POS	Information	Detailed information
1	2D Barcode for S/N (data matrix)	TBPB100915SSSSSS
2	Text for S/N	"TBPB100" is fixed code for Push button "915" is fixed code US version "SSSSSS" is decimal serial number  Example: TBPB100915000001

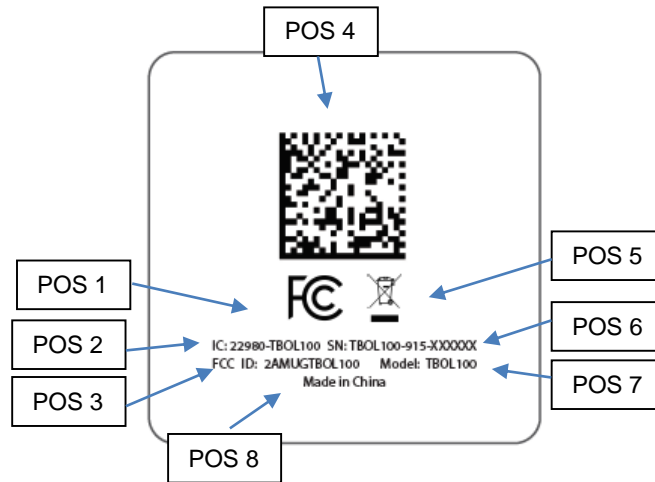
## 2.1.2 LABEL PLACEMENT



## 2.2 UNIT LABEL

### 2.2.1 US VERSION PERMANENT LABEL

Flex Part Number: TCKH-003279  
 Dimension: 30mm X 30mm  
 Font: Myriad pro, 2.8 pt  
 Text Color: Pantone Q758-1-4  
 Adhesive: TBD  
 Material: Transparent plastic (PE, PP)  
 Finish: Matte



POS	Information	Detailed information
1	FCC mark	Must be 5mm high
2	IC ID	22980-TBPB100, fixed code and defined by customer
3	FCC ID	2AMUGTBPB100, fixed code and defined by customer
4	Data Matrix	Shall conform with ECC200 GS1 specification. Includes: <ol style="list-style-type: none"> <li>SN identified by AI (21): TBPB100915SSSSSS, same with POS4</li> <li>DevEUI identified by AI (92): 58:A0:CB:00:00:20:xx:xx, provided by customer, BFT will upload this code to Flex flow and combine with serial number</li> </ol> Example: (21)TBPB100915000001(92)58:A0:CB:00:00:20:00:01
5	WEEE mark	Must be 7mm high
6	Serial number	BBPPVVFFFSSSSSS  Where: BB = TB (Brand) PP = WL (Product Code) VVV = Version Major.Minor.Revision FFF = 915 (Frequency or other differentiating feature) Example: TBPB100915000001
7	Model Number	TBPB100
8	Production Country	Made in China

### 2.2.2 REMOVABLE LABEL

Part Number: TCKH-004222

Dimension: See picture to the right.

Font: TBD

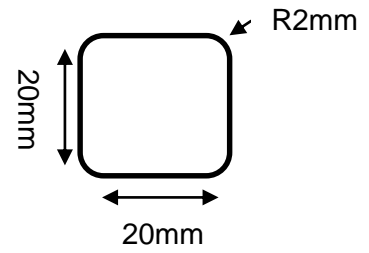
Text Color: Pantone Black U

Adhesive: TBD (Must be removable without leaving traces)

Material: PE, PP

Material Color: RAL 9003 – Signal White

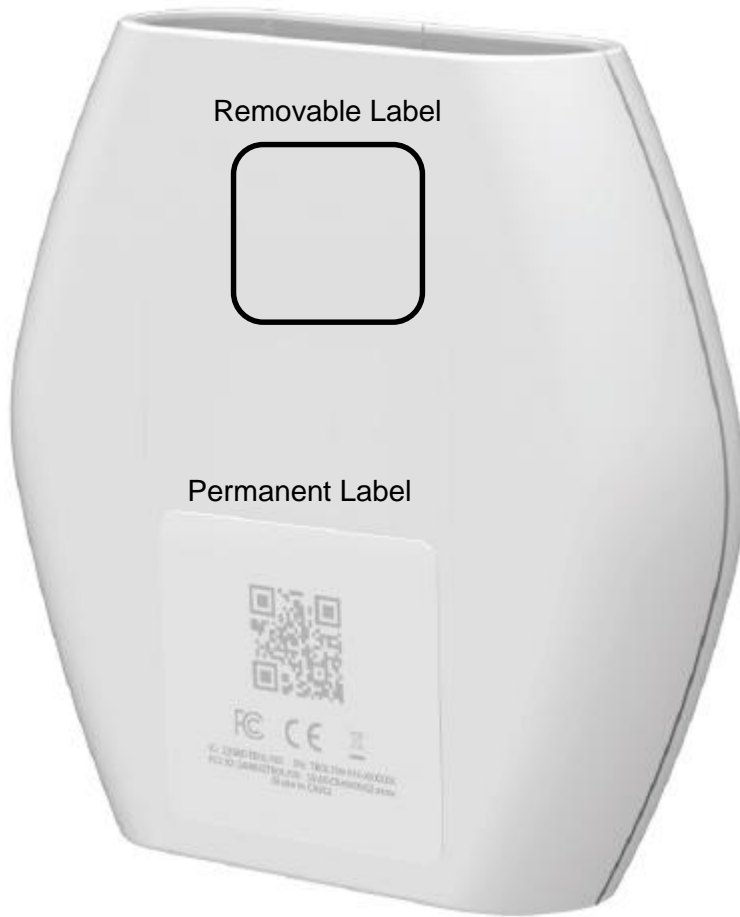
Finish: Glossy



This label will be printed in the UFT test station automatically.



### 2.2.3 LABEL PLACEMENT



**2.3 CARTON BOX LABEL**

**2.3.1 US VERSION**

Part Number: TCKH-PKG-00007  
 Dimension: 65mm X 45mm  
 Font: Arial, 7 pt  
 Color: Black text on a white label  
 Adhesive: TBD  
 Material: TBD



POS	Information	Detailed information
1	Model with barcode	TBPB100-915-11-WHT-01.00.00
2	FG part number with barcode	TCKH-003052C-USFG
3	BOX ID with barcode	BOXYWWSSSSS "BOX" is fixed code for carton box "YY" is year code "WW" is week code "SSSS" is decimal serial number
4	Quantity with barcode	XXX, total quantity of unit is this carton box
5	FCC mark	
6	CE mark	
7	WEEE mark	
8	FCC ID	2AMUGTBPB100
9	IC ID	22980-TBPB100
10	Production Country	Made in China

### 2.3.2 LABEL PLACEMENT



## 2.4 PALLET LABEL

### 2.4.1 US VERSION

Part Number: TCKH-PKG-00007  
 Dimension: 65mm X 45mm  
 Font: Arial, 7 pt  
 Color: Black text on a white label  
 Adhesive: TBD  
 Material: TBD



POS	Information	Detailed information
1	Model with barcode	TBPB100-915-11-WHT-01.00.00
2	FG part number with barcode	TCKH-003052C-USFG
3	Pallet ID with barcode	PLTYWWSSSSS "PLT" is fixed code for pallet "YY" is year code "WW" is week code "SSSSS" is decimal serial number
4	Quantity with barcode	XXX, total quantity of unit in this pallet
5	FCC mark	
6	CE mark	
7	WEEE mark	
8	FCC ID	2AMUGTBPB100
9	IC ID	22980-TBPB100
10	Production Country	Made in China

### 2.4.2 LABEL PLACEMENT

Will stick this label on the top cover of pallet.