



Test Report No.: EW0071-3

5. APPENDIX A – MODIFICATIONS RECORDERS FOR ENGINEERING CHANGES TO THE EUT BY THE LAB

The Bevi Countertop 1.0 Needed the Following Modifications to Pass Radiated Emissions:



DC Power cable from switch to Control board ferrite PN 0431164281 one Loop



DC power from AC/DC Brick to switch/Fan Ferrite PN 0431164281



Pump 1 Cable at Pump Ferrite PN 046178181



Pump 2 Cable at Pump Ferrite PN 046178181



Pump 3 Cable at Pump Ferrite PN 046178181



Test Report No.: EW0071-3



Pump 4 Cable at Pump Ferrite PN 046178181



Valve 1 Cable at Valve Ferrite PN 046178181



Valve 2 Cable at Valve Ferrite PN 046178181



USB Cable near 90 degree Connector Ferrite PN 0444164281



Power Cable from Control Board to SOM one Ferrite with one loop near control board PN 2643800502 and one ferrite right next to it PN 0461167281



Ethernet Cable Has 2 Ferrites one with one loop and one with no loop. PN: 0461164181



Test Report No.: EW0071-3



One Ferrite on the LVSD Cable under the Plastic Cover PN 0461178181



One Ferrite on the Touch Screen Cable PN: 0461178181



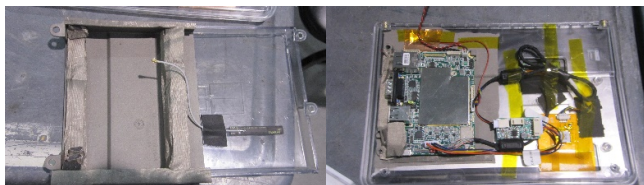
One Ferrite on Motor Cable bundle near Control Board PN: 0461167281



One Ferrite on Valve Cable Bundle near Control Board PN: 0461167281



One Ferrite on LED Cable PN: 0431164281



Wire Routing in Display Box, Metal Shield over SOM, and EMI Gasket around SOM PCB
Conductive Coating added to Plastic Display Box Cover around SOM PCB