



# 深圳市联笙科技有限公司

ShengZhen LianSheng Technology Co.,Ltd.

## 规格承认书

### SPECIFICATION FOR APPROVAL

日期 Date 2019/08/06

编号 File No SA000704

版本 Revision 1.0

客 户

中娱云

CUSTOMER:

客户料号

CUSTOMER NO:

品 名

WIFI 2.4G/5.8G Antenna L总=350MM

供方料号

LSP.A925.W316.10

送样日期 Date:

送样数量 Q"TY:

PCS

客户确认 CUSTOMER APPROVED BY

APPROVAL

CHIEF

SUPERVISOR

供方确认 SUPPLIER SIGNATURE

APPROVAL

CHECK

DESIGN

ChenGuoqiang

WenXue

ChenXingcheng

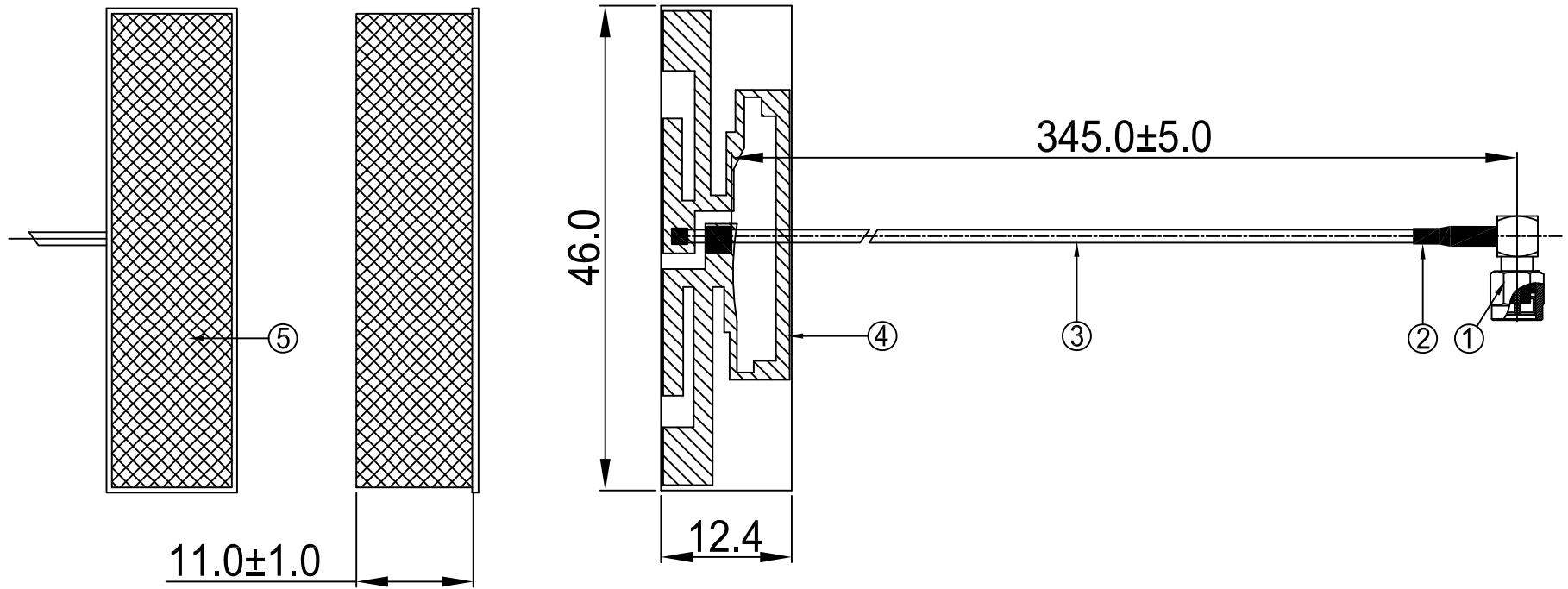
# 承认书项目表

NO	内容 (Contents)	页数 (Number of Page)	页码 (Page Code)
1	承认书封面 (Spec Cover)	1	1
2	承认书项目表 (Spec Item)	1	2
3	工程成品图 (Drawing)	1	3
4	天线规格 (Antenna Specification)	1	4
5	S参数测试 (S Parameter)	1	5
6	无源测试 (Passive Test)	3	6 ~ 8
7	方向图 (Radiation Pattern)	1	9
8	天线装配图 (Antenna Profile)	3	10 ~ 12
9	N/A	N/A	N/A
10	-	-	-
11	-	-	-
12	-	-	-
13	-	-	-

**RoHS**  
Compatible

CUSTOMER	
PART NO	

REV.	DESCRIPTION	DATE
△	首次发行	2019.8.6



5	Paste+EVA	45.0*11.4*11.0MM	Paste+EVA	EVA1000XA.P01	1
4	PCB Black	46.0*12.4*0.6MM	PCB	PCB1000XA.P01	1
3	Coaxial Cable	RG316	RG316	COA1000XA.P01	1
2	Hot Shrink Tube	Ø3.0*15.0MM Black	EVA	EVA1000XA.P01	1
1	SMA Male 90°	Au Plated	Cu	CON1000XA.P01	1
NO	PART NAME	DESCRIPTION	Material	Part Number	Q.TY

**深圳市联笙科技有限公司** Tel:0755-82885545  
ShengZhen LianSheng Technology Co.,Ltd. MP:13823198410

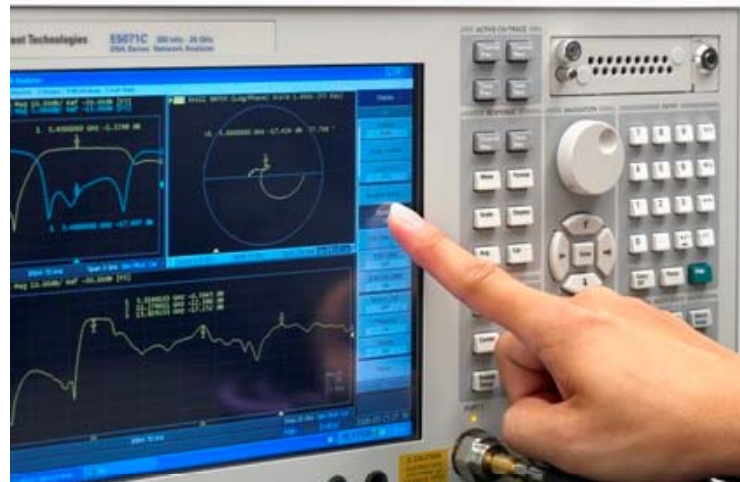
PART NAME: WiFi 2.4/5.8GHz Antenna L=345MM			
PART NO.: LSP.A925.W316.10		DATE: 2019-08-06	
APPROVED BY	CHECKED BY	DESIGNED BY	 Tolerance X.X ±0.50 X.XX±0.15 X° ±3°
陈国强	文雪	陈兴易	
UNITS: mm SCALE: 1/1 REVISION: A			

# 天线规格

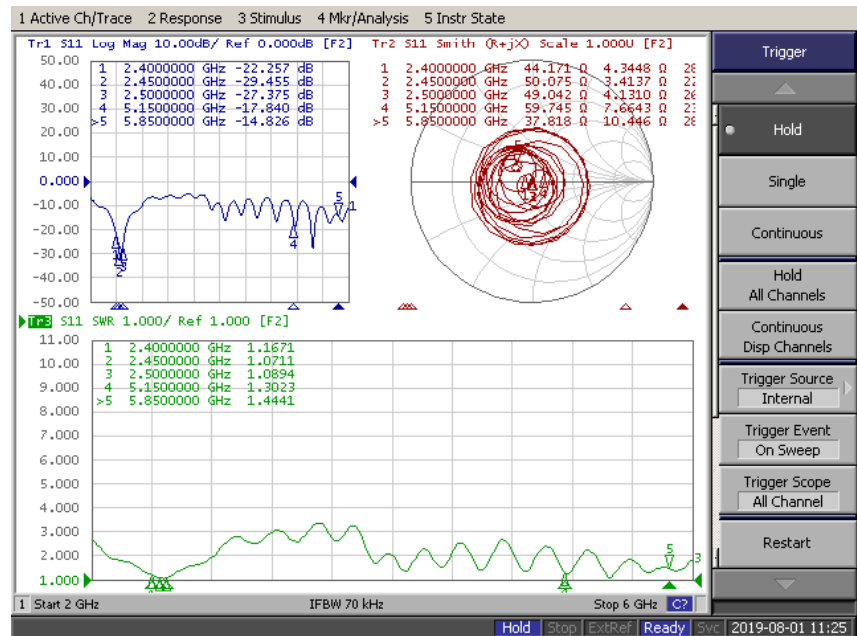
## Antenna Specification

<b>Electrical Properties</b>	
Frequency	2.4-2.5GHz 5.15-5.85GHz
Impedance	50 Ohm Nominal
V.S.W.R	2.0 Max
Return Loss	-10 dB Max
Radiation	Omni-directional
Gain (Peak)	2.0dBi@2.4-2.5GHz 2.0dBi@5.15-5.85GHz
Polarization	Linear
Connector	SMA Male 90°
<b>Physical Properties</b>	
Antenna Material	PCB
Cable Type	RG316mm//L=345mm
Operating Temp.	-40 ~ +85 °C
Storage Temp.	-40 ~ +85 °C
Cable Color	Brown

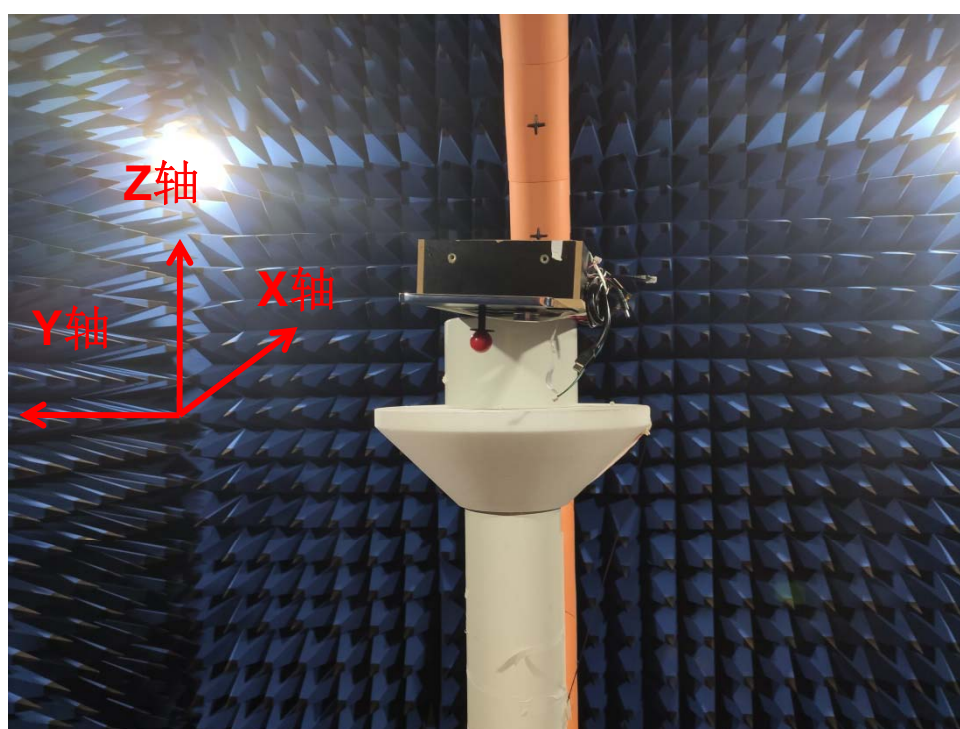
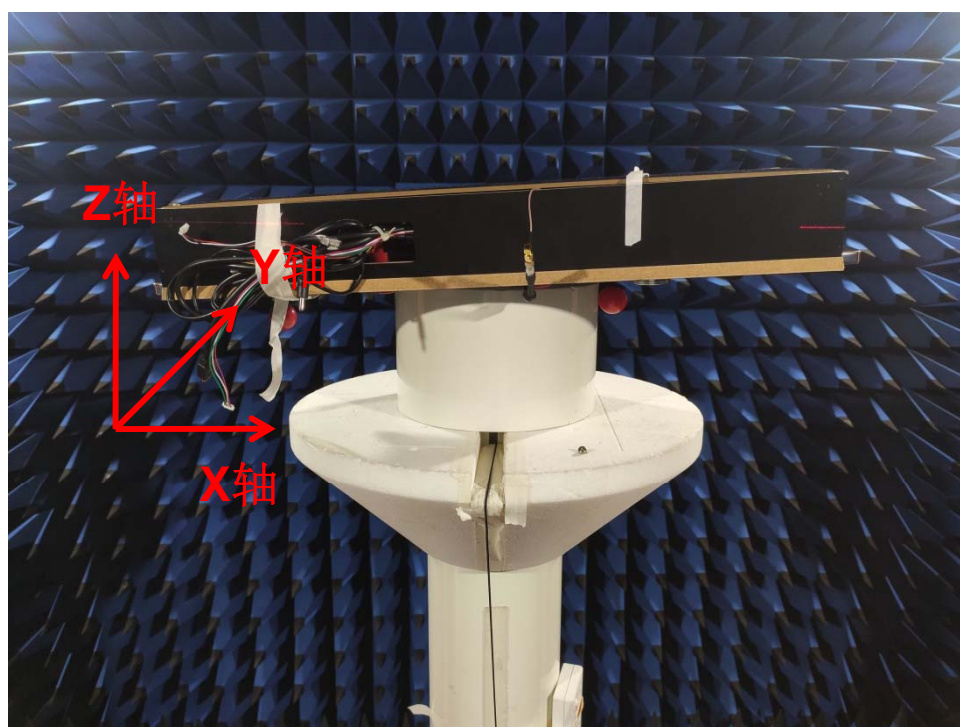
# Agilent E5071B



# S Parameter Test // WiFi



# *Antenna Passive Test*



### Passive Test For WiFi(2.4G)

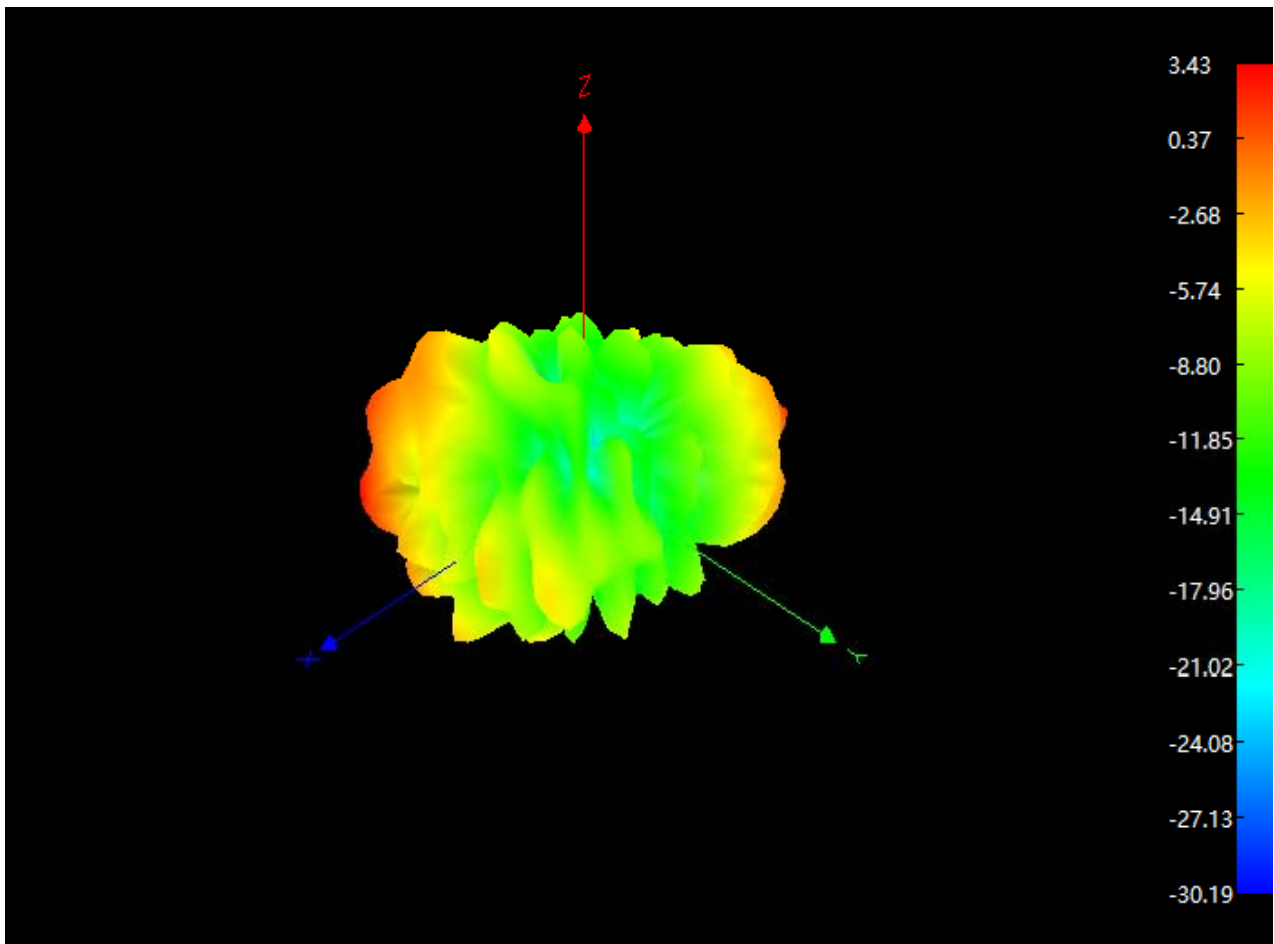
Freq (MHz)	Effi (%)	Effi (dB)	Gain (dBi)
2400	49.5	-3.1	1.4
2410	50.1	-3.0	1.7
2420	50.8	-2.9	2.0
2430	50.6	-3.0	1.8
2440	50.6	-3.0	1.6
2450	46.8	-3.3	1.3
2460	45.3	-3.4	1.3
2470	44.6	-3.5	1.6
2480	43.7	-3.6	1.6
2490	43.5	-3.6	1.7
2500	43.4	-3.6	1.7

### Passive Test For WiFi(5.8G)

Freq (MHz)	Effi (%)	Effi (dB)	Gain (dBi)
5150	24.7	-6.1	2.0
5200	23.8	-6.2	1.7
5250	22.3	-6.5	1.2
5300	21.7	-6.6	1.6
5350	24.5	-6.1	1.1
5400	26.0	-5.9	1.5
5450	26.1	-5.8	1.1
5500	24.7	-6.1	1.4
5550	23.7	-6.3	1.1
5600	22.7	-6.4	-0.3
5650	22.2	-6.5	0.8
5700	21.8	-6.6	1.6
5750	21.1	-6.8	1.0
5800	19.6	-7.1	1.3
5850	18.7	-7.3	0.7



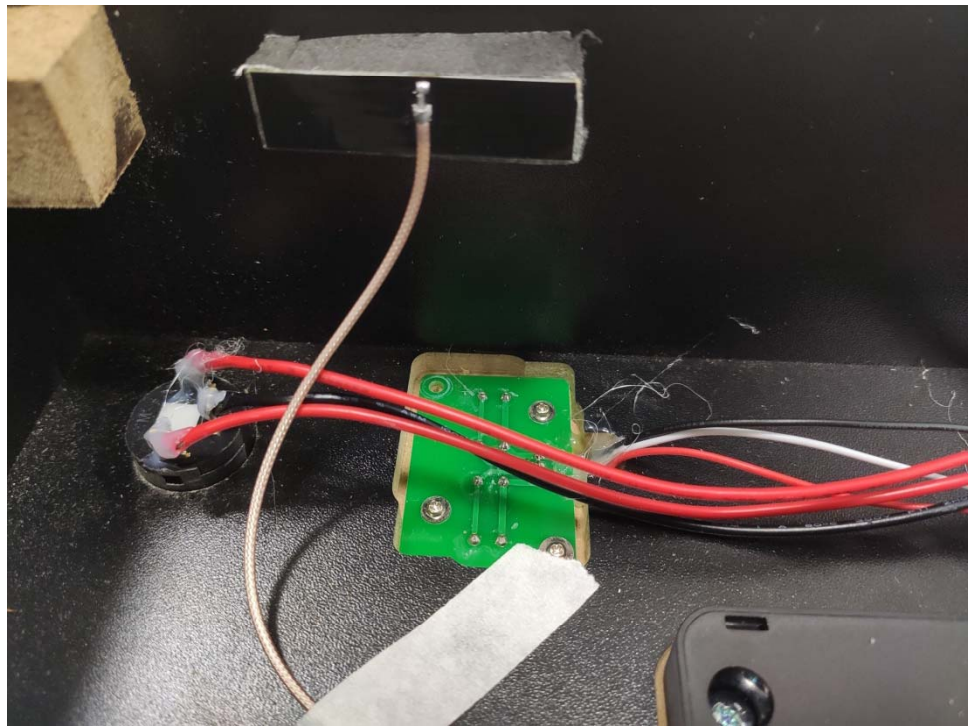
## Radiation Pattern For WiFi(2.4G)



*Device*



*Antenna  
WiFi*



**WiFi双频天线，泡棉垫高**

