

FCC TEST REPORT

Client Name : SANWA LIMITED

Address : Room 1005, 10/F., Tower 2, Silvercord 30 Canton Road,
Tsim Sha Tsui, Kowloon, Hong Kong, China

Product Name : 2.4G Wireless Mouse Receiver

Date : Sept. 19, 2019

Shenzhen Anbotek Compliance Laboratory Limited



Contents

1. General Information.....	4
1.1. Client Information.....	4
1.2. Description of Device (EUT).....	4
1.3. Auxiliary Equipment Used During Test.....	5
1.4. Description of Test Modes.....	5
1.5. List of Channels.....	6
1.6. Description of Test Setup.....	7
1.7. Test Equipment List.....	8
1.8. Description of Test Facility.....	9
2. Summary of Test Results.....	10
3. Conducted Emission Test.....	11
3.1. Test Standard and Limit.....	11
3.2. Test Setup.....	11
3.3. Test Procedure.....	11
3.4. Test Data.....	12
4. Radiated Emission and Band Edge.....	14
4.1. Test Standard and Limit.....	14
4.2. Test Setup.....	15
4.3. Test Procedure.....	16
4.4. Test Data.....	17
5. 20dB Bandwidth Test.....	27
5.1. Test Standard and Limit.....	27
5.2. Test Setup.....	27
5.3. Test Procedure.....	27
5.4. Test Data.....	27
6. Antenna Requirement.....	30
6.1. Test Standard and Requirement.....	30
6.2. Antenna Connected Construction.....	30
APPENDIX I -- TEST SETUP PHOTOGRAPH.....	31
APPENDIX II -- EXTERNAL PHOTOGRAPH.....	33
APPENDIX III -- INTERNAL PHOTOGRAPH.....	37



TEST REPORT

Applicant : SANWA LIMITED
Manufacturer : Dongguan Newmen Electronics Technology Co., Ltd
Product Name : 2.4G Wireless Mouse Receiver
Model No. : GMAURC1
Trade Mark : Sanwa
Rating(s) : Input: DC 5V, 25mA via USB Port

Test Standard(s) : **FCC Part15 Subpart C, Paragraph 15.249**

Test Method(s) : **ANSI C63.10: 2013**

The device described above is tested by Shenzhen Anbotek Compliance Laboratory Limited to determine the maximum emission levels emanating from the device and the severe levels of the device can endure and its performance criterion. The measurement results are contained in this test report and Shenzhen Anbotek Compliance Laboratory Limited is assumed full of responsibility for the accuracy and completeness of these measurements. Also, this report shows that the EUT (Equipment Under Test) is technically compliant with the FCC Part 15 Subpart C requirements.

This report applies to above tested sample only and shall not be reproduced in part without written approval of Shenzhen Anbotek Compliance Laboratory Limited.

Date of Receipt

Aug. 29, 2019

Date of Test

Aug. 29~Sept. 10, 2019

Prepared by



Dolly mo

(Engineer / Dolly Mo)

Reviewer

Snowy Meng

(Supervisor / Snowy Meng)

Approved & Authorized Signer

Sally Zhang

(Manager / Sally Zhang)

1. General Information

1.1. Client Information

Applicant	:	SANWA LIMITED
Address	:	Room 1005, 10/F., Tower 2, Silvercord 30 Canton Road, Tsim Sha Tsui, Kowloon, Hong Kong, China
Manufacturer	:	Dongguan Newmen Electronics Technology Co., Ltd
Address	:	No.5,Xifa road, Xihu Industrial district, Lin village, Tangxia town, Dongguan, Guangdong, China
Factory	:	Dongguan Newmen Electronics Technology Co., Ltd
Address	:	No.5,Xifa road, Xihu Industrial district, Lin village, Tangxia town, Dongguan, Guangdong, China

1.2. Description of Device (EUT)

Product Name	:	2.4G Wireless Mouse Receiver	
Model No.	:	GMAURC1	
Trade Mark	:	Sanwa	
Test Power Supply	:	DC 5V via USB Port	
Test Sample No.	:	1-2-1(Normal Sample), 1-2-2(Engineering Sample)	
Product Description	:	Operation Frequency:	2408~2474MHz
	:	Number of Channel:	34 Channels
	:	Modulation Type:	GFSK
	:	Antenna Type:	PCB Antenna
	:	Antenna Gain(Peak):	-1.56 dBi

Remark: 1) For a more detailed features description, please refer to the manufacturer's specifications or the User's Manual.

1.3. Auxiliary Equipment Used During Test

MacBook Air	Model: A1466
	Input: 14.85V/3.05A CMIIT ID:C02HXB48DRVC
	Adapter:
	Input: AC 100-240V, 1A, 50-60Hz Output: 14.85V/3.05A

1.4. Description of Test Modes

To investigate the maximum EMI emission characteristics generates from EUT, the test system was pre-scanning tested base on the consideration of following EUT operation mode or test configuration mode which possible have effect on EMI emission level. Each of these EUT operation mode(s) or test configuration mode(s) mentioned above was evaluated respectively.

Pretest Mode	Description
Mode 1	CH01
Mode 2	CH17
Mode 3	CH34

For Conducted Emission	
Final Test Mode	Description
Mode 1	CH01
Mode 2	CH17
Mode 3	CH34

For Radiated Emission	
Final Test Mode	Description
Mode 1	CH01
Mode 2	CH17
Mode 3	CH34

Note:

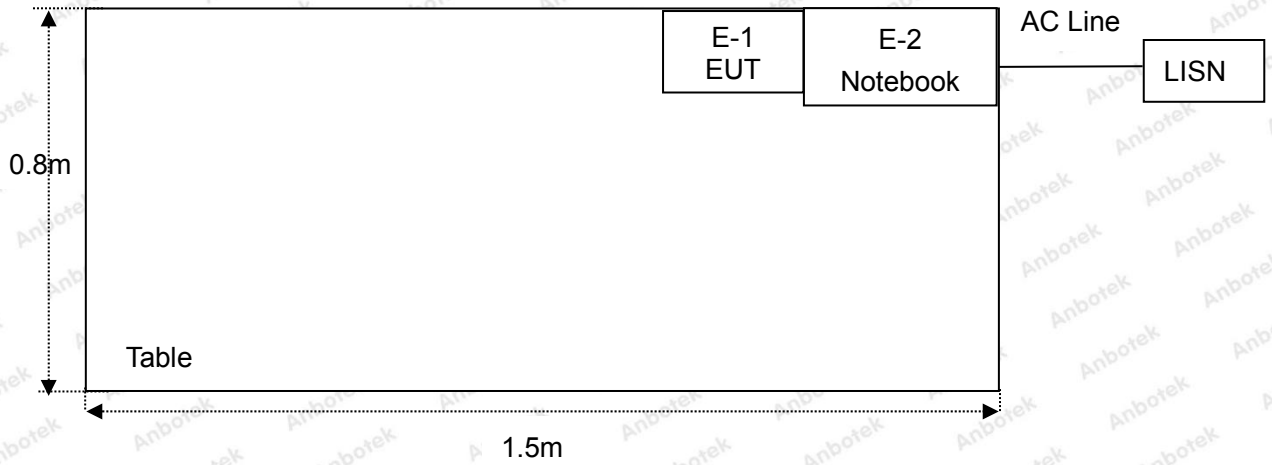
1. The engineering test program was provided and the EUT was programmed to be in continuously transmitting mode.

1.5. List of Channels

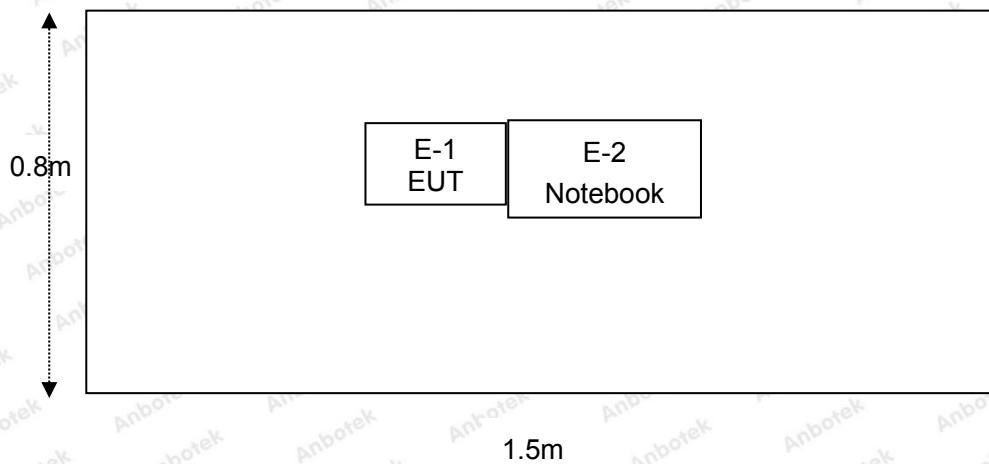
Channel	Freq. (MHz)	Channel	Freq. (MHz)	Channel	Freq. (MHz)	Channel	Freq. (MHz)
1	2408	10	2426	19	2444	28	2462
2	2410	11	2428	20	2446	29	2464
3	2412	12	2430	21	2448	30	2466
4	2414	13	2432	22	2450	31	2468
5	2416	14	2434	23	2452	32	2470
6	2418	15	2436	24	2454	33	2472
7	2420	16	2438	25	2456	34	2474
8	2422	17	2440	26	2458		
9	2424	18	2442	27	2460		

1.6. Description of Test Setup

CE



RE



1.7. Test Equipment List

Item	Equipment	Manufacturer	Model No.	Serial No.	Last Cal.	Cal. Interval
1.	L.I.S.N. Artificial Mains Network	Rohde & Schwarz	ENV216	100055	Nov. 26, 2018	1 Year
2.	EMI Test Receiver	Rohde & Schwarz	ESPI3	101604	Nov. 05, 2018	1 Year
3.	RF Switching Unit	Compliance Direction	RSU-M2	38303	Nov. 05, 2018	1 Year
4.	Spectrum Analysis	Agilent	E4407B	US39390582	Nov. 05, 2018	1 Year
5.	MAX Spectrum Analysis	Agilent	N9020A	MY51170037	Nov. 05, 2018	1 Year
6.	Preamplifier	SKET Electronic	BK1G18G30 D	KD17503	Nov. 05, 2018	1 Year
7.	Double Ridged Horn Antenna	Instruments corporation	GTH-0118	351600	Nov. 20, 2018	1 Year
8.	Bilog Broadband Antenna	Schwarzbeck	VULB9163	VULB 9163-289	Nov. 19, 2018	1 Year
9.	Loop Antenna	Schwarzbeck	FMZB1519B	00053	Nov. 20, 2018	1 Year
10.	Horn Antenna	A-INFO	LB-180400-K F	J211060628	Nov. 20, 2018	1 Year
11.	Pre-amplifier	SONOMA	310N	186860	Nov. 05, 2018	1 Year
12.	EMI Test Software EZ-EMC	SHURPLE	N/A	N/A	N/A	N/A
13.	RF Test Control System	YIHENG	YH3000	2017430	Nov. 05, 2018	1 Year
14.	Power Sensor	DAER	RPR3006W	15100041SN045	Nov. 05, 2018	1 Year
15.	Power Sensor	DAER	RPR3006W	15100041SN046	Nov. 05, 2018	1 Year
16.	MXA Spectrum Analysis	Agilent	N9020A	MY51170037	Nov. 05, 2018	1 Year
17.	MXG RF Vector Signal Generator	Agilent	N5182A	MY48180656	Nov. 05, 2018	1 Year
18.	Signal Generator	Agilent	E4421B	MY41000743	Nov. 05, 2018	1 Year
19.	DC Power Supply	LW	TPR-6420D	374470	Oct. 31, 2018	1 Year
20.	Constant Temperature Humidity Chamber	ZHONGJIAN	ZJ-KHWS80 B	N/A	Nov. 01, 2018	1 Year

1.8. Description of Test Facility

The test facility is recognized, certified, or accredited by the following organizations:

FCC-Registration No.: 184111

Shenzhen Anbotek Compliance Laboratory Limited, EMC Laboratory has been registered and fully described in a report filed with the (FCC) Federal Communications Commission. The acceptance letter from the FCC is maintained in our files. Registration No. 184111, September 30, 2018.

ISED-Registration No.: 8058A

Shenzhen Anbotek Compliance Laboratory Limited, EMC Laboratory has been registered and fully described in a report filed with the (ISED) Innovation, Science and Economic Development Canada. The acceptance letter from the ISED is maintained in our files. Registration 8058A, March 07, 2019.

Test Location

Shenzhen Anbotek Compliance Laboratory Limited.

1/F, Building D, Sogood Science and Technology Park, Sanwei community, Hangcheng Street, Bao'an District, Shenzhen, Guangdong, China.518102



2. Summary of Test Results

Standard Section	Test Item	Result
15.203	Antenna Requirement	PASS
15.207	Conducted Emission	PASS
15.249	Radiated Emission	PASS
15.215(c)	20dB Bandwidth	PASS
15.249(c)	Band Edge	PASS

Remark: "N/A" is an abbreviation for Not Applicable.



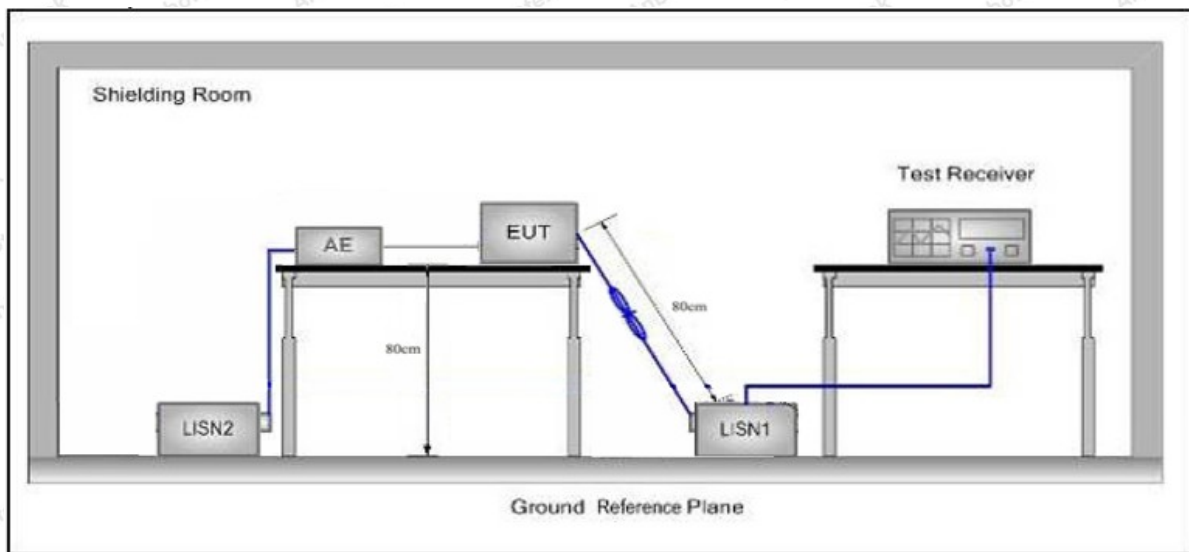
3. Conducted Emission Test

3.1. Test Standard and Limit

Test Standard	FCC Part15 Section 15.207		
Test Limit	Frequency	Maximum RF Line Voltage (dBuV)	
		Quasi-peak Level	Average Level
	150kHz~500kHz	66 ~ 56 *	56 ~ 46 *
	500kHz~5MHz	56	46
5MHz~30MHz	60	50	

Remark: (1) *Decreasing linearly with logarithm of the frequency.
 (2) The lower limit shall apply at the transition frequency.

3.2. Test Setup



3.3. Test Procedure

The EUT system is connected to the power mains through a line impedance stabilization network (L.I.S.N.). This provides a 50ohm coupling impedance for the EUT system. Please refer the block diagram of the test setup and photographs. Both sides of AC line are checked to find out the maximum conducted emission. In order to find the maximum emission levels, the relative positions of equipment and all of the interface cables shall be changed according to FCC ANSI C63.10-2013 on Conducted Emission Measurement.

The bandwidth of test receiver (ESCI) set at 9kHz.

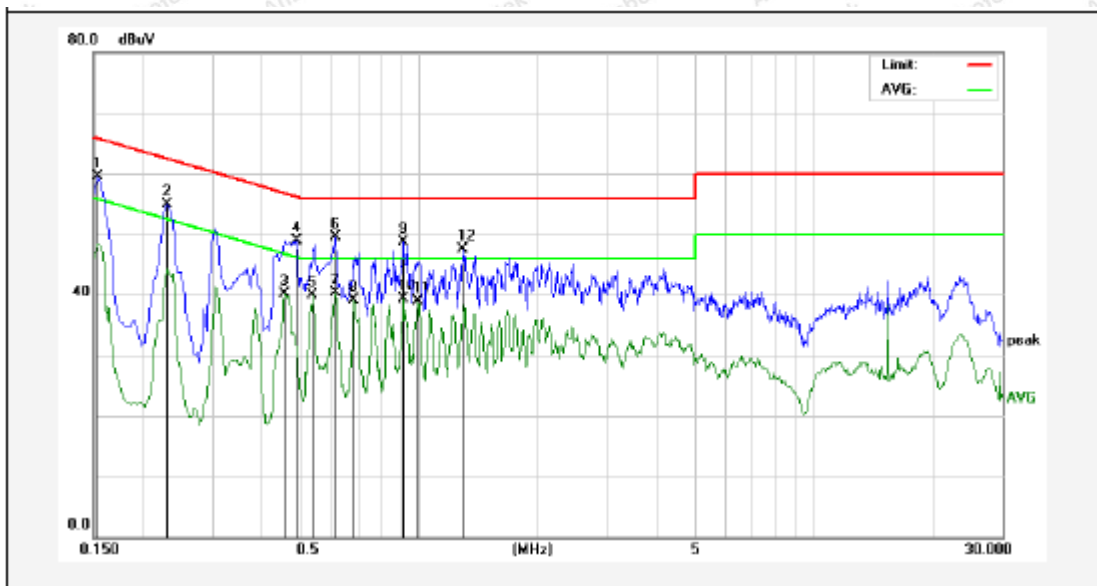
The frequency range from 150kHz to 30MHz is checked.

3.4. Test Data

During the test, pre-scan all the modes, and found the Low channel which is the worst case, only the worst case is recorded in the report

Conducted Emission Test Data

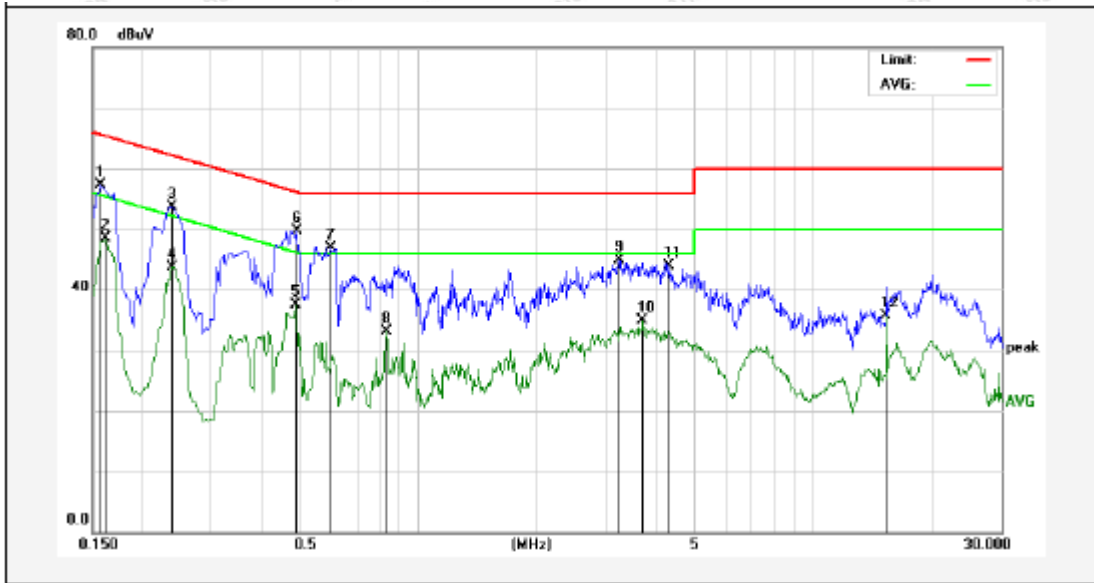
Test Site: 1# Shielded Room
 Operating Condition: Mode 1
 Test Specification: DC 5V via USB Port
 Comment: Live Line
 Tem.: 22.7°C Hum.: 52%



No.	Freq. (MHz)	Reading (dBuV)	Factor (dB)	Result (dBuV)	Limit dBuV	Over Limit (dB)	Detector	Remark
1	0.1539	39.63	19.90	59.53	65.78	-6.25	QP	
2	0.2300	35.08	19.89	54.97	62.45	-7.48	QP	
3	0.4580	20.20	19.96	40.16	46.73	-6.57	AVG	
4	0.4900	28.99	19.98	48.97	56.17	-7.20	QP	
5	0.5380	20.01	19.99	40.00	46.00	-6.00	AVG	
6	0.6140	29.52	20.01	49.53	56.00	-6.47	QP	
7	0.6140	20.26	20.01	40.27	46.00	-5.73	AVG	
8	0.6860	18.98	20.04	39.02	46.00	-6.98	AVG	
9	0.9180	28.60	20.10	48.70	56.00	-7.30	QP	
10	0.9180	19.24	20.10	39.34	46.00	-6.66	AVG	
11	0.9900	18.79	20.12	38.91	46.00	-7.09	AVG	
12	1.2940	27.40	20.13	47.53	56.00	-8.47	QP	

Conducted Emission Test Data

Test Site: 1# Shielded Room
 Operating Condition: Mode 1
 Test Specification: DC 5V via USB Port
 Comment: Neutral Line
 Tem.: 22.7°C Hum.: 52%



No.	Freq. (MHz)	Reading (dBuV)	Factor (dB)	Result (dBuV)	Limit dBuV	Over Limit (dB)	Detector	Remark
1	0.1580	37.41	19.90	57.31	65.56	-8.25	QP	
2	0.1620	28.57	19.90	48.47	55.36	-6.89	AVG	
3	0.2380	33.82	19.89	53.71	62.16	-8.45	QP	
4	0.2380	23.76	19.89	43.65	52.16	-8.51	AVG	
5	0.4900	17.47	19.98	37.45	46.17	-8.72	AVG	
6	0.4940	29.78	19.98	49.76	56.10	-6.34	QP	
7	0.6020	26.99	20.01	47.00	56.00	-9.00	QP	
8	0.8340	13.00	20.08	33.08	46.00	-12.92	AVG	
9	3.2340	24.66	20.16	44.82	56.00	-11.18	QP	
10	3.7180	14.73	20.17	34.90	46.00	-11.10	AVG	
11	4.3260	23.69	20.19	43.88	56.00	-12.12	QP	
12	15.3580	15.37	20.27	35.64	50.00	-14.36	AVG	

4. Radiated Emission and Band Edge

4.1. Test Standard and Limit

Test Standard	FCC Part15 C Section 15.209 and 15.205				
Test Limit	Frequency (MHz)	Field strength (microvolt/meter)	Limit (dBuV/m)	Remark	Measurement distance (m)
	0.009MHz~0.490MHz	2400/F(kHz)	-	-	300
	0.490MHz-1.705MHz	24000/F(kHz)	-	-	30
	1.705MHz-30MHz	30	-	-	30
	30MHz~88MHz	100	40.0	Quasi-peak	3
	88MHz~216MHz	150	43.5	Quasi-peak	3
	216MHz~960MHz	200	46.0	Quasi-peak	3
	960MHz~1000MHz	500	54.0	Quasi-peak	3
	Above 1000MHz	500	54.0	Average	3
-		74.0	Peak	3	

Remark:

(1)The lower limit shall apply at the transition frequency.

(2) 15.35(b), Unless otherwise specified, the limit on peak radio frequency emissions is 20dB above the maximum permitted average emission limit applicable to the equipment under test. This peak limit applies to the total peak emission level radiated by the device.

Test Standard	FCC Part15 C Section 15.249					
Test Limit	Frequency (MHz)	Field Strength of fundamental ((millivolts /meter)	Field Strength of Harmonics (microvolts/meter)	Limit (dBuV/m)	Remark	Measurement distance (m)
	2400~2483.5	50	-	114.0	Peak	3
	2400~2483.5	50	-	94.0	Average	3
	2400~2483.5	-	500	74.0	Peak	3
	2400~2483.5	-	500	54.0	Average	3

Remark:

(1) 15.35(b), Unless otherwise specified, the limit on peak radio frequency emissions is 20dB above the maximum permitted average emission limit applicable to the equipment under test. This peak limit applies to the total peak emission level radiated by the device.

4.2. Test Setup

Figure 1. Below 30MHz

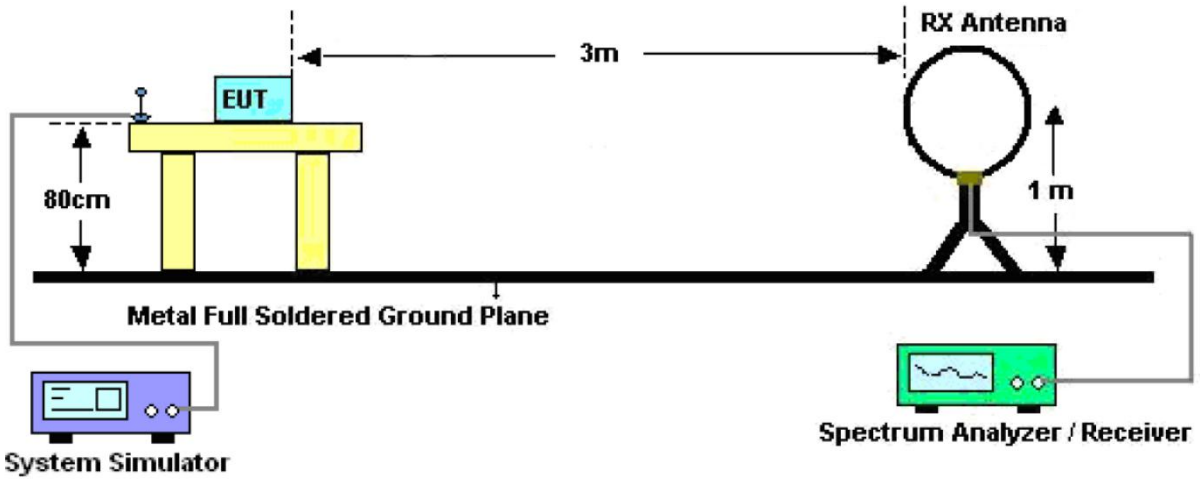


Figure 2. 30MHz to 1GHz

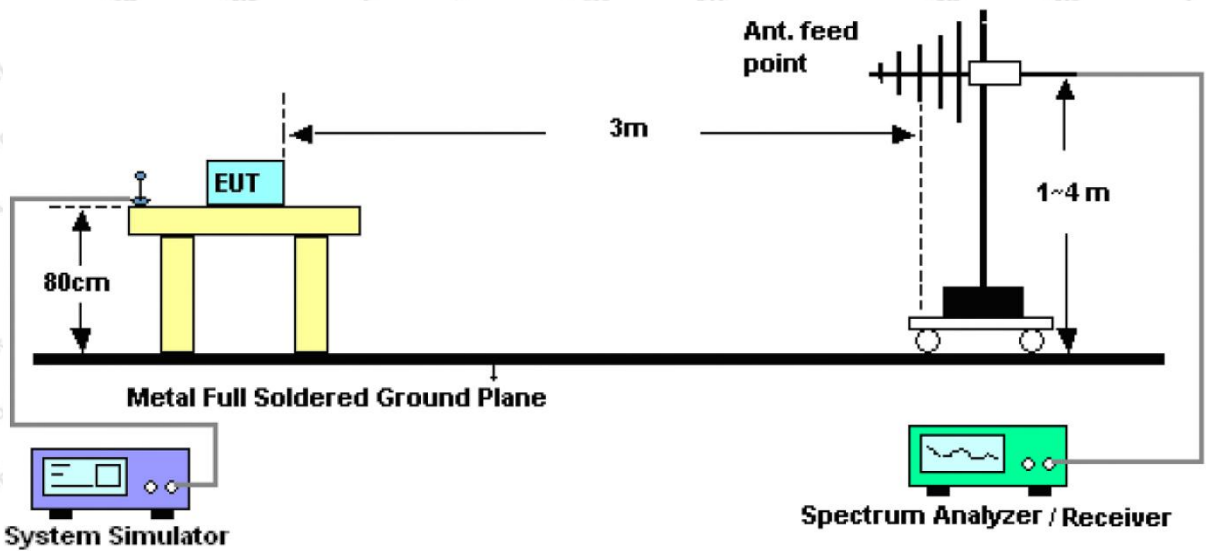
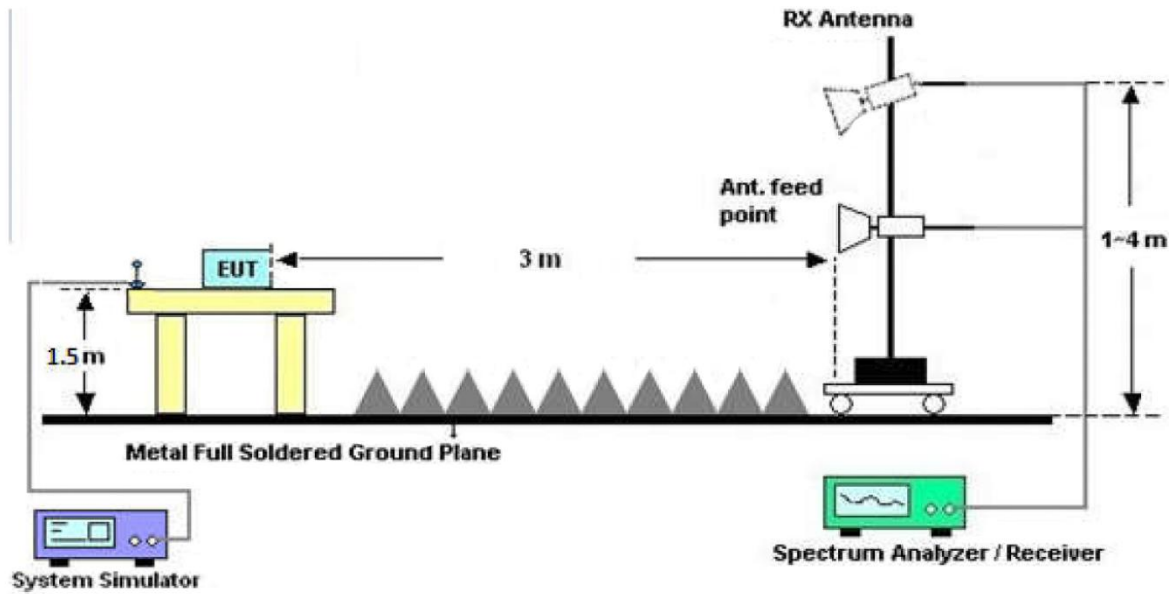


Figure 3. Above 1 GHz



4.3. Test Procedure

For below 1GHz: The EUT is placed on a turntable, which is 0.8m above the ground plane.

For above 1GHz: The EUT is placed on a turntable, which is 1.5m above the ground plane.

The turn table can rotate 360 degrees to determine the position of the maximum emission level. The EUT is set 3 meters away from the receiving antenna which is mounted on a antenna tower. The antenna can be moved up and down from 1 to 4 meters to find out the maximum emission level. Rotated the EUT through three orthogonal axes to determine the maximum emissions, both horizontal and vertical polarization of the antenna are set on test. The EUT is tested in 9*6*6 Chamber. The device is evaluated in xyz orientation.

For the radiated emission test above 1GHz:

Place the measurement antenna away from each area of the EUT determined to be a source of emissions at the specified measurement distance, while keeping the measurement antenna aimed at the source of emissions at each frequency of significant emissions, with polarization oriented for maximum response. The measurement antenna may have to be higher or lower than the EUT, depending on the radiation pattern of the emission and staying aimed at the emission source for receiving the maximum signal. The final measurement antenna elevation shall be that which maximizes the emissions. The measurement antenna elevation for maximum emissions shall be restricted to a range of heights of from 1 m to 4 m above the ground or reference ground plane.

For 9kHz to 150kHz, Set the spectrum analyzer as:

RBW = 200Hz, VBW = 1kHz, Detector= Quasi-Peak, Trace mode= Max hold, Sweep- auto couple.

For 150kHz to 30MHz, Set the spectrum analyzer as:

RBW = 9KHz, VBW = 30kHz, Detector= Quasi-Peak, Trace mode= Max hold, Sweep- auto couple.

For 30MHz to 1000MHz, Set the spectrum analyzer as:

RBW = 100kHz, VBW = 300kHz, Detector = Quasi-Peak, Trace mode = Max hold, Sweep = auto couple.

For above 1GHz, Set the spectrum analyzer as:

RBW = 1MHz, VBW = 1MHz, Detector = Peak, Trace mode = Max hold, Sweep = auto couple.

RBW = 1MHz, VBW = 10Hz, Detector = Average, Trace mode = Max hold, Sweep = auto couple.

4.4. Test Data

PASS

During the test, Pre-scan all kind of the place mode (X-axis, Y-axis, Z-axis), and found the X-axis is the worst case.

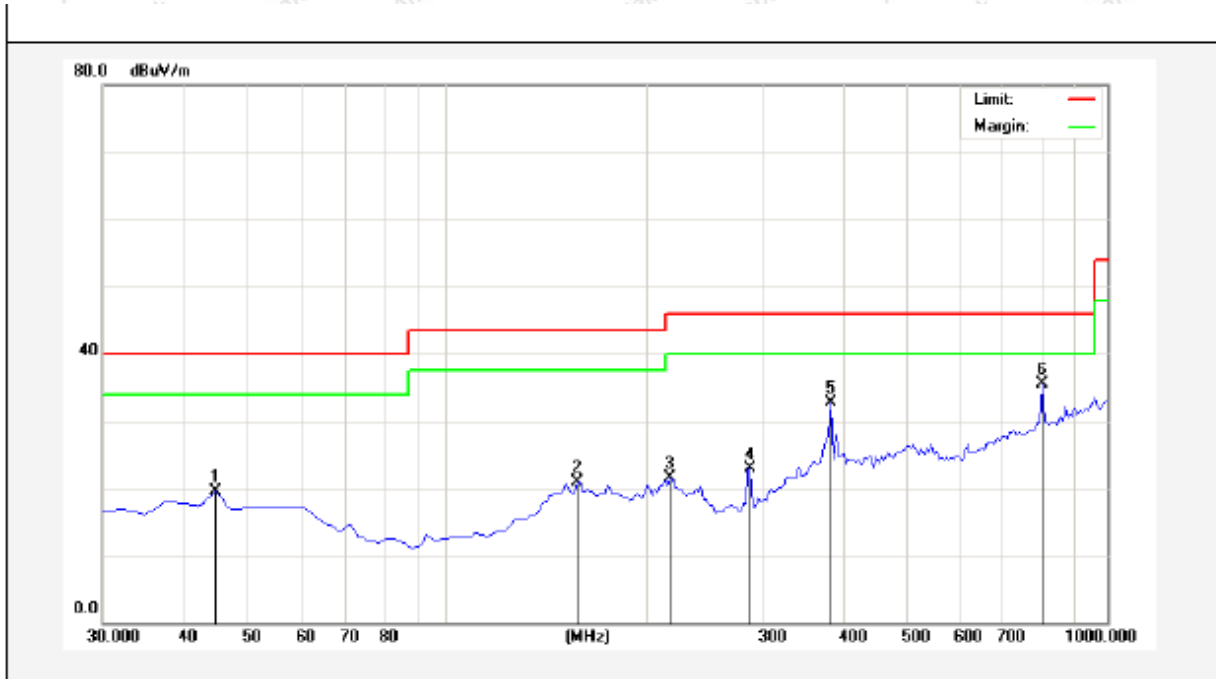
The test results of 9kHz-30MHz was attenuated more than 20dB below the permissible limits, so the results don't record in the report.

During the test, pre-scan all the modes, and found the Middle channel which is the worst case, only the worst case is recorded in the report



Test Results (30~1000MHz)

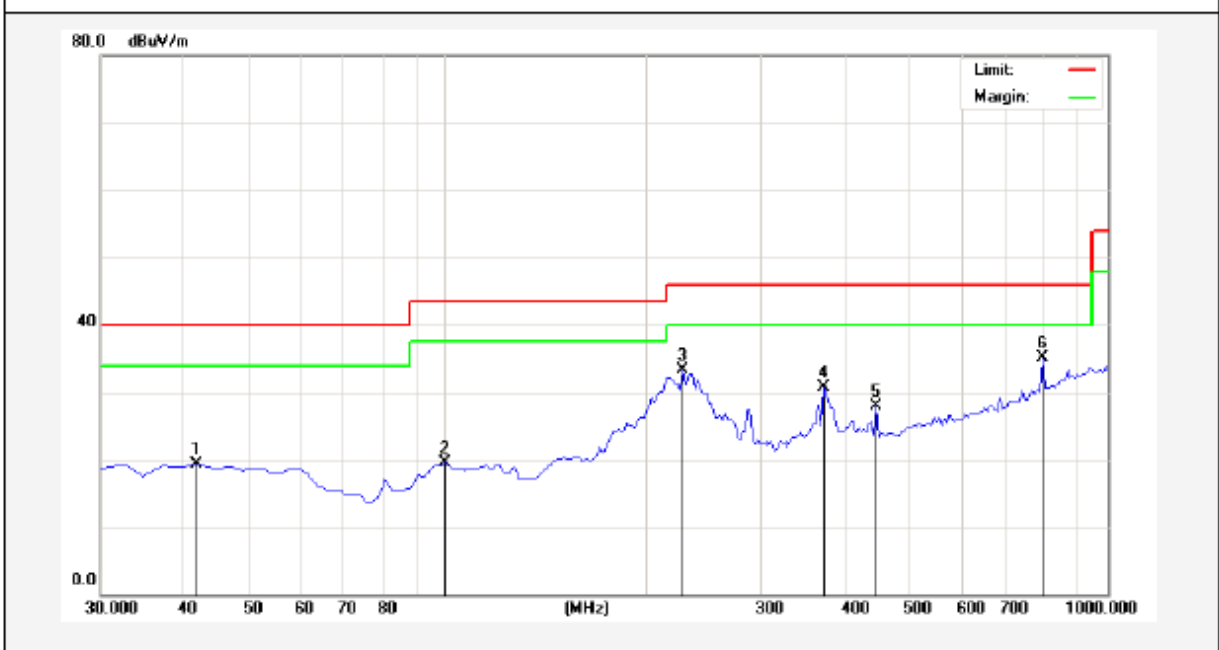
Test Mode: Mode 2
 Power Source: DC 5V via USB Port
 Polarization: Vertical
 Temp.(°C)/Hum.(%RH): 23.1°C/50%RH



No.	Freq. (MHz)	Reading (dBuV)	Factor (dB/m)	Result (dBuV/m)	Limit (dBuV/m)	Over Limit (dB)	Detector	Height (cm)	degree (deg)	Remark
1	44.5500	35.98	-16.54	19.44	40.00	-20.56	QP	100	67	
2	158.5250	39.86	-18.90	20.96	43.50	-22.54	QP	100	152	
3	219.1500	37.54	-16.00	21.54	46.00	-24.46	QP	100	198	
4	289.4750	38.75	-15.84	22.91	46.00	-23.09	QP	100	256	
5	381.6250	46.14	-13.43	32.71	46.00	-13.29	QP	100	278	
6	796.3000	42.28	-6.80	35.48	46.00	-10.52	QP	100	298	

Test Results (30~1000MHz)

Test Mode: Mode 2
 Power Source: DC 5V via USB Port
 Polarization: Horizontal
 Temp.(°C)/Hum.(%RH): 23.1°C/50%RH



No.	Freq. (MHz)	Reading (dBuV)	Factor (dB/m)	Result (dBuV/m)	Limit (dBuV/m)	Over Limit (dB)	Detector	Height (cm)	degree (deg)	Remark
1	42.1250	36.89	-17.55	19.34	40.00	-20.66	QP	100	98	
2	100.3250	42.32	-22.89	19.43	43.50	-24.07	QP	100	102	
3	228.8500	53.35	-20.08	33.27	46.00	-12.73	QP	100	169	
4	374.3500	45.21	-14.55	30.66	46.00	-15.34	QP	100	182	
5	447.1000	41.39	-13.51	27.88	46.00	-18.12	QP	100	268	
6	798.7250	42.91	-7.73	35.18	46.00	-10.82	QP	100	357	

Test Results (1GHz-25GHz)

Test Mode: CH01 (Low channel)									
Frequency (MHz)	Read Level (dBuV)	Antenna Factor (dB/m)	Cable Loss (dB)	Preamp Factor (dB)	Level (dBuV/m)	Limit (dBuV/m)	Over Limit (dB)	Pol.	Detector
Freq. (MHz)	Reading (dBuV)	Antenna Factor (dB/m)	Cable Loss (dB)	Amp. (dB)	Level (dBuV/m)	Limit (dBuV/m)	Over Limit (dB)	Pol.	Detector
2408.0000	95.55	31.12	2.18	35.33	93.52	114.00	-20.48	V	Peak
2408.0000	85.39	31.12	2.18	35.33	83.36	94.00	-10.64	V	AVG
4816.0000	50.31	34.01	2.58	34.65	52.25	74.00	-21.75	V	Peak
4816.0000	39.51	34.01	2.58	34.65	41.45	54.00	-12.55	V	AVG
7224.0000	45.31	36.16	2.97	35.07	49.37	74.00	-24.63	V	Peak
7224.0000	35.36	36.16	2.97	35.07	39.42	54.00	-14.58	V	AVG
9632.0000	*								
12040.0000	*								
14448.0000	*								
16856.0000	*								
2408.0000	93.19	31.12	2.18	35.33	91.16	114.00	-22.84	H	Peak
2408.0000	84.23	31.12	2.18	35.33	82.20	94.00	-11.80	H	AVG
4816.0000	49.78	34.01	2.58	34.65	51.72	74.00	-22.28	H	Peak
4816.0000	40.29	34.01	2.58	34.65	42.23	54.00	-11.77	H	AVG
7224.0000	48.48	36.16	2.97	35.07	52.54	74.00	-21.46	H	Peak
7224.0000	35.75	36.16	2.97	35.07	39.81	54.00	-14.19	H	AVG
9632.0000	*								
12040.0000	*								
14448.0000	*								

Note:

1. Level = Receiver Read level + Antenna Factor + Cable Loss – Pre-amplifier Factor
2. "*" means the test results were attenuated more than 20dB below the permissible limits, so the results don't record in the report.

Test Mode: CH17 (Middle channel)									
Freq. (MHz)	Reading (dBuV)	Antenna Factor (dB/m)	Cable Loss (dB)	Amp. (dB)	Level (dBuV/m)	Limit (dBuV/m)	Over Limit (dB)	Pol.	Detector
2440.0000	96.43	31.12	2.20	34.51	95.24	114.00	-18.76	V	Peak
2440.0000	84.70	31.22	2.20	34.51	83.61	94.00	-10.39	V	AVG
4880.0000	51.00	34.98	2.49	34.14	54.33	74.00	-19.67	V	Peak
4880.0000	38.43	34.98	2.49	34.14	41.76	54.00	-12.24	V	AVG
7320.0000	45.31	36.01	3.01	34.56	49.77	74.00	-24.23	V	Peak
7320.0000	35.03	36.01	3.01	34.56	39.49	54.00	-14.51	V	AVG
9760.0000	*								
12200.0000	*								
14640.0000	*								
17080.0000	*								
2440.0000	95.67	31.12	2.20	34.51	94.48	114.00	-19.52	H	Peak
2440.0000	85.15	31.12	2.20	34.51	83.96	94.00	-10.04	H	AVG
4880.0000	47.65	34.98	2.49	34.14	50.98	74.00	-23.02	H	Peak
4880.0000	39.14	34.98	2.49	34.14	42.47	54.00	-11.53	H	AVG
7320.0000	47.30	36.01	3.01	34.56	51.76	74.00	-22.24	H	Peak
7320.0000	38.11	36.01	3.01	34.56	42.57	54.00	-11.43	H	AVG
9760.0000	*								
12200.0000	*								
14640.0000	*								
17080.0000	*								

Note:

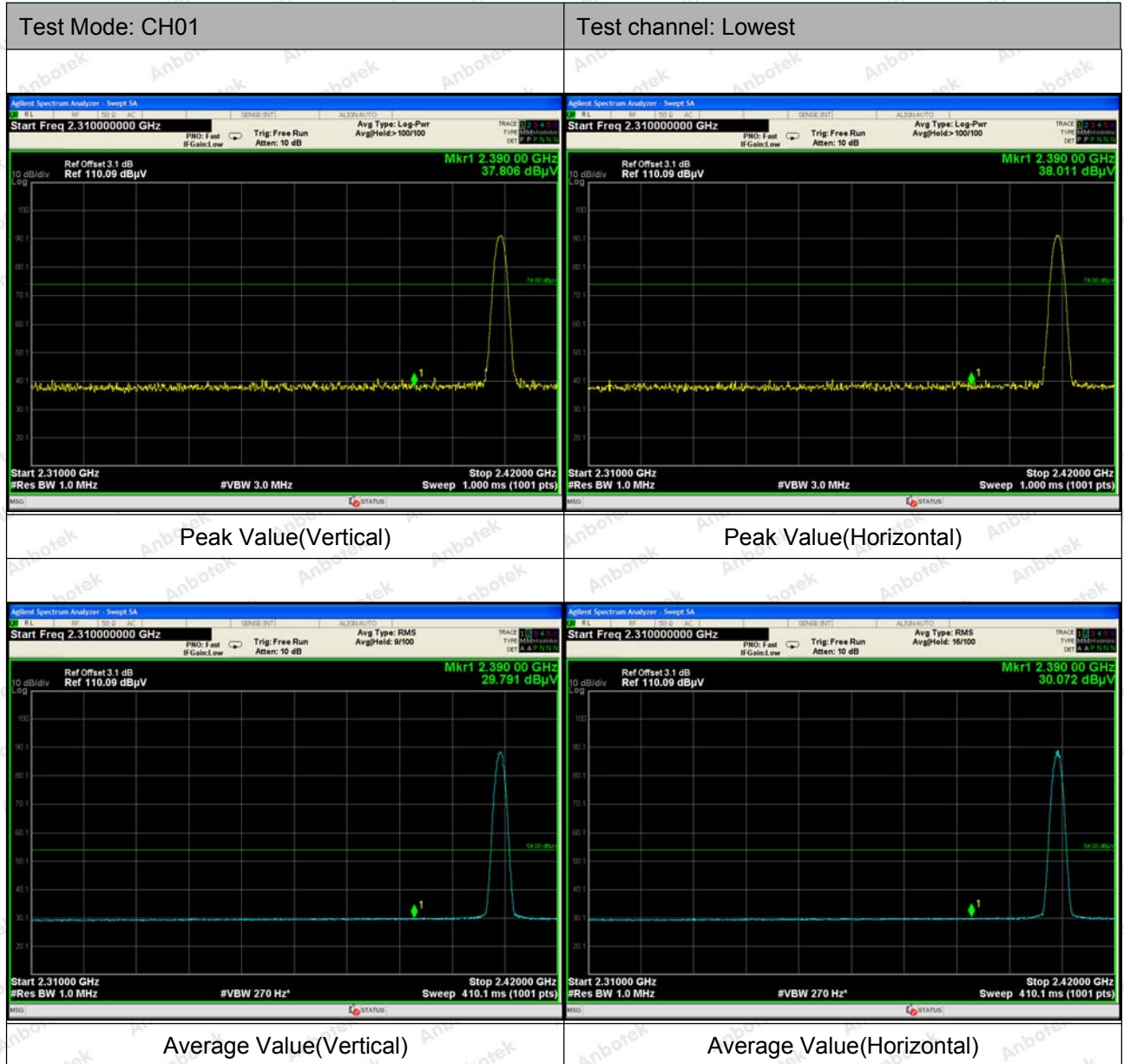
1. Level = Receiver Read level + Antenna Factor + Cable Loss – Pre-amplifier Factor
2. “*” means the test results were attenuated more than 20dB below the permissible limits, so the results don't record in the report.

Test Mode: CH34 (High channel)									
Freq. (MHz)	Reading (dBuV)	Antenna Factor (dB/m)	Cable Loss (dB)	Amp. (dB)	Level (dBuV/m)	Limit (dBuV/m)	Over Limit (dB)	Pol.	Detector
2474.0000	96.50	31.65	2.23	36.07	94.31	114.00	-19.69	V	Peak
2474.0000	85.70	31.65	2.23	36.07	83.51	94.00	-10.49	V	AVG
4948.0000	50.24	35.06	2.60	34.93	52.97	74.00	-21.03	V	Peak
4948.0000	40.81	35.06	2.60	34.93	43.54	54.00	-10.46	V	AVG
7422.0000	46.31	36.19	3.12	35.11	50.51	74.00	-23.49	V	Peak
7422.0000	38.95	36.19	3.12	35.11	43.15	54.00	-10.85	V	AVG
9896.0000	*								
12370.0000	*								
14844.0000	*								
17318.0000	*								
2474.0000	96.89	31.65	2.23	36.07	94.70	114.00	-19.30	H	Peak
2474.0000	82.26	31.65	2.23	36.07	80.07	94.00	-13.93	H	AVG
4948.0000	48.94	35.06	2.60	34.93	51.67	74.00	-22.33	H	Peak
4948.0000	39.71	35.06	2.60	34.93	42.44	54.00	-11.56	H	AVG
7422.0000	48.49	36.19	3.12	35.11	52.69	74.00	-21.31	H	Peak
7422.0000	37.92	36.19	3.12	35.11	42.12	54.00	-11.88	H	AVG
9896.0000	*								
12370.0000	*								
14844.0000	*								
17318.0000	*								

Note:

1. Level = Receiver Read level + Antenna Factor + Cable Loss – Preamplifier Factor
2. "*" means the test results were attenuated more than 20dB below the permissible limits, so the results don't record in the report.

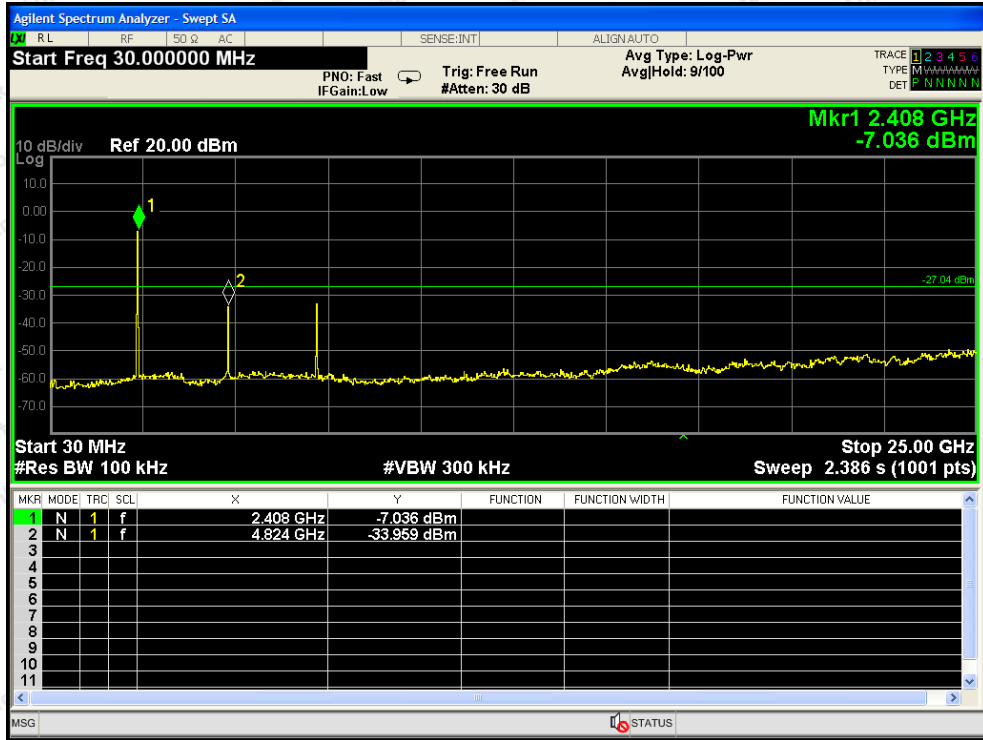
Radiated Band Edge:



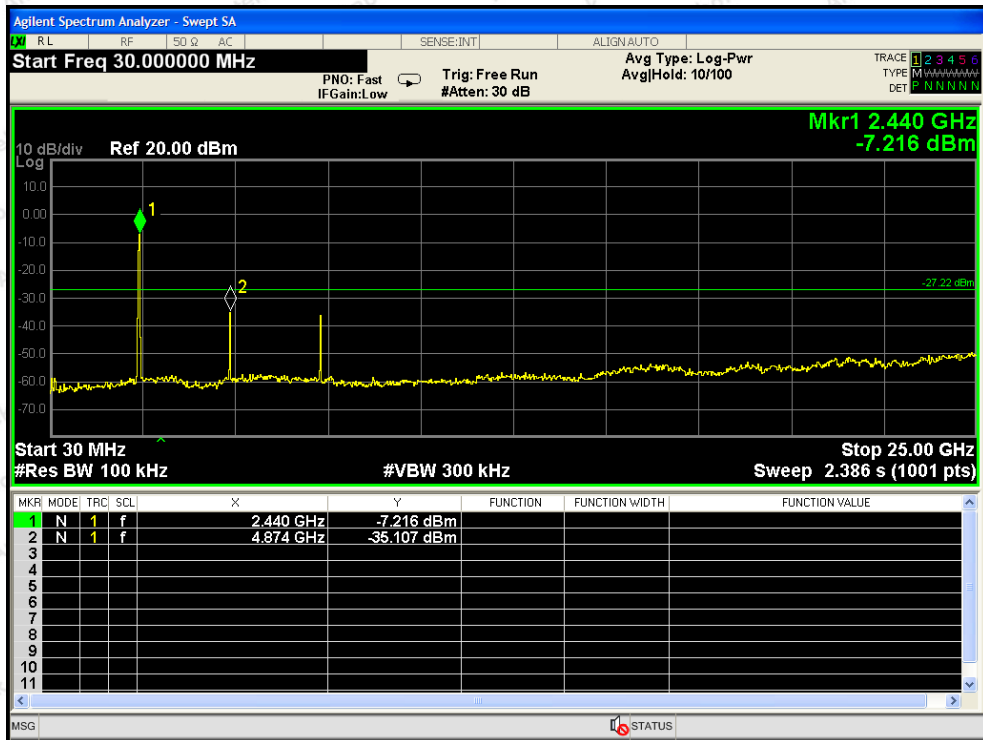


Remark:

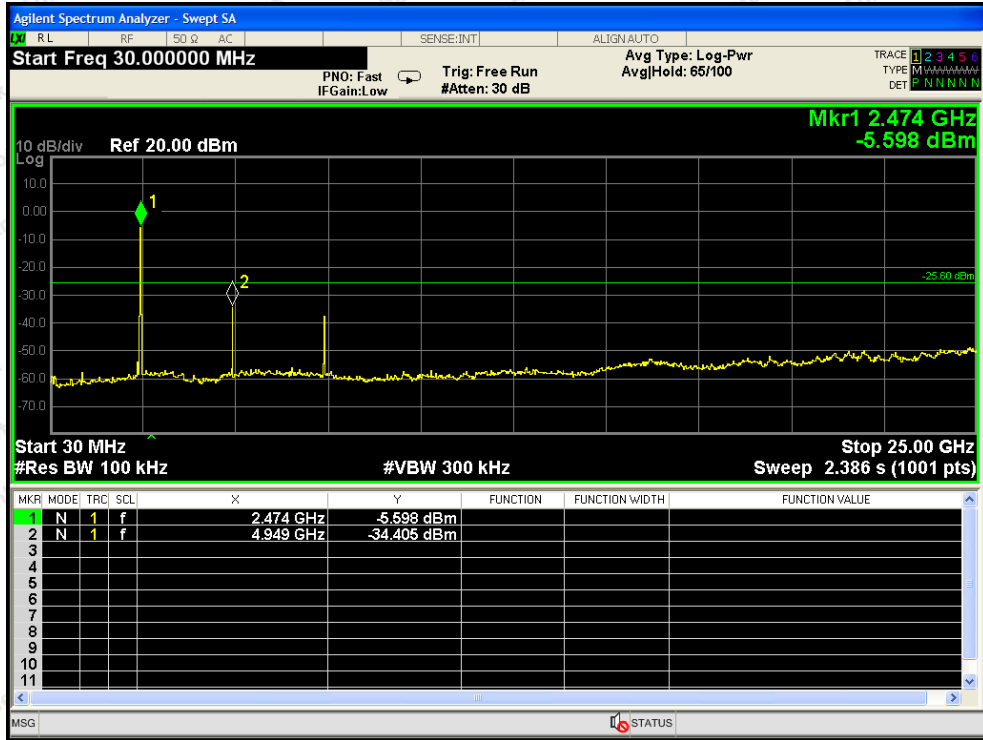
1. Level = Receiver Read level + Antenna Factor + Cable Loss – Pre-amplifier Factor



CH: Low



CH: Middle



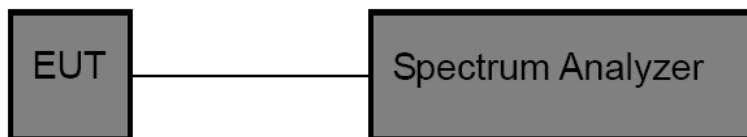
CH: High

5. 20dB Bandwidth Test

5.1. Test Standard and Limit

Test Standard	FCC Part15 C Section 15.249
---------------	-----------------------------

5.2. Test Setup



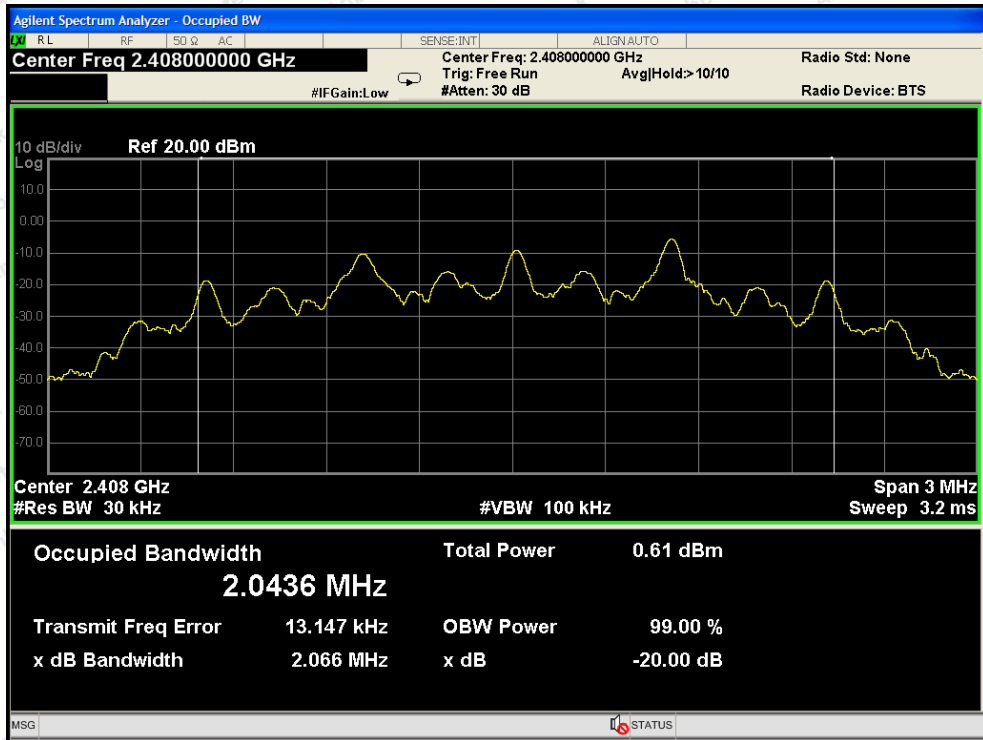
5.3. Test Procedure

1. Place the EUT on the table and set it in the transmitting mode.
2. Remove the antenna from the EUT and then connect a low loss RF cable from the antenna port to the spectrum analyzer.
3. Set the spectrum analyzer as:
 RBW = 30kHz, VBW ≥ 3 * RBW = 100kHz,
 Detector = Average
 Trace mode = Max hold.
 Sweep = auto couple.
4. Mark the peak frequency and -20dB (upper and lower) frequency.
5. Repeat until all the rest channels are investigated.

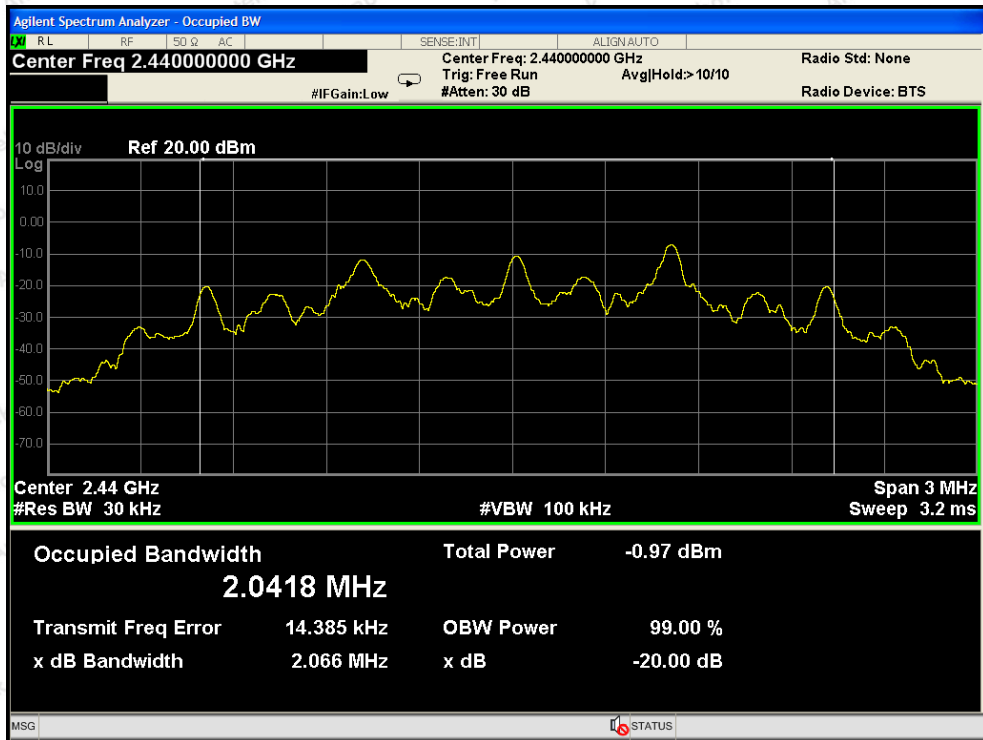
5.4. Test Data

Test Item	: 20dB Bandwidth	Test Mode	: Mode 1
Test Voltage	: DC 5V via USB Port	Temperature	: 22.4°C
Test Result	: PASS	Humidity	: 55%RH

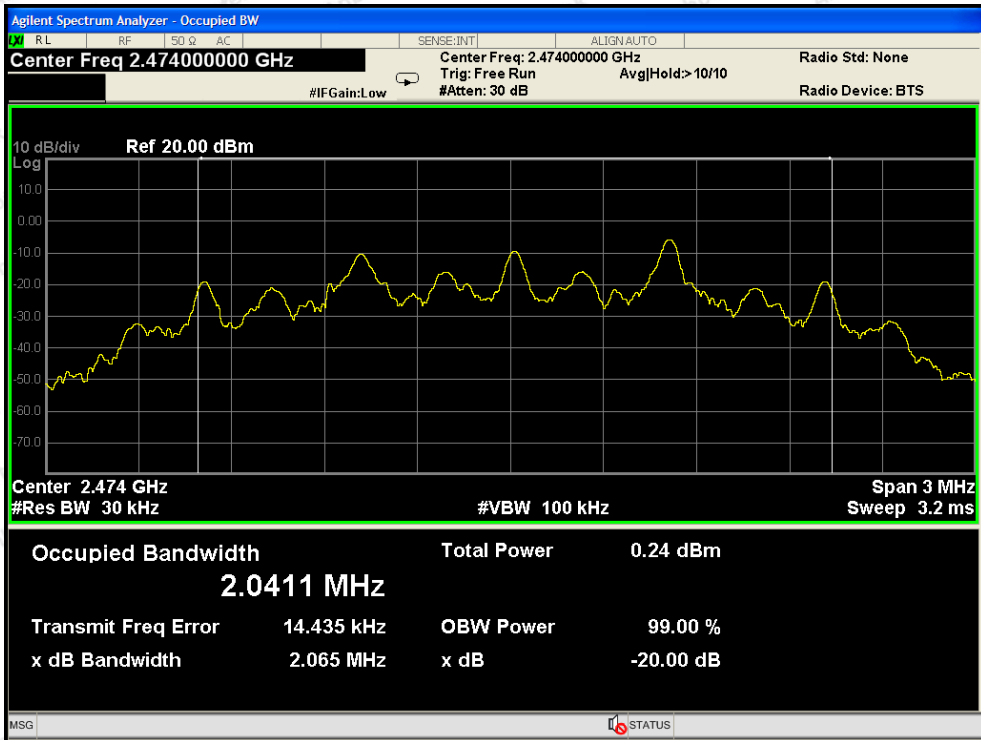
Frequency (MHz)	Bandwidth (kHz)	Result
2408MHZ	2066	PASS
2440MHZ	2066	PASS
2474MHZ	2065	PASS



Test Mode: Low



Test Mode: Middle



Test Mode: High

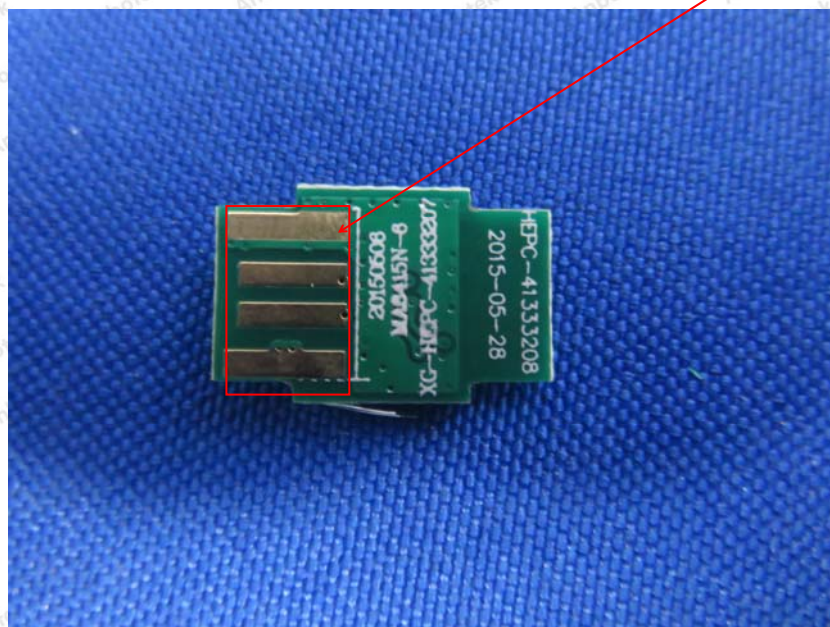
6. Antenna Requirement

6.1. Test Standard and Requirement

Test Standard	FCC Part15 Section 15.203
Requirement	1) 15.203 requirement: An intentional radiator shall be designed to ensure that no antenna other than that furnished by the responsible party shall be used with the device. The use of a permanently attached antenna or of an antenna that uses a unique coupling to the intentional radiator, the manufacturer may design the unit so that a broken antenna can be replaced by the user, but the use of a standard antenna jack or electrical connector is prohibited.

6.2. Antenna Connected Construction

The antenna is a PCB Antenna which permanently attached, and the best case gain of the antenna is -1.56 dBi. It complies with the standard requirement.



APPENDIX I -- TEST SETUP PHOTOGRAPH

Photo of Conducted Emission Measurement



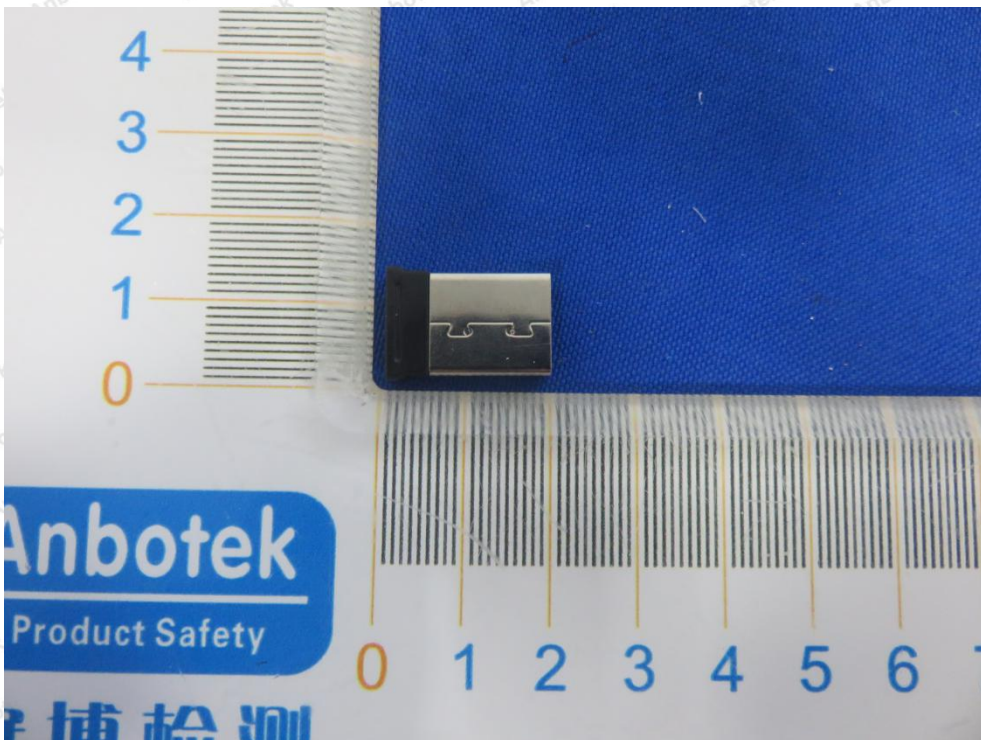
Photo of Radiation Emission Test

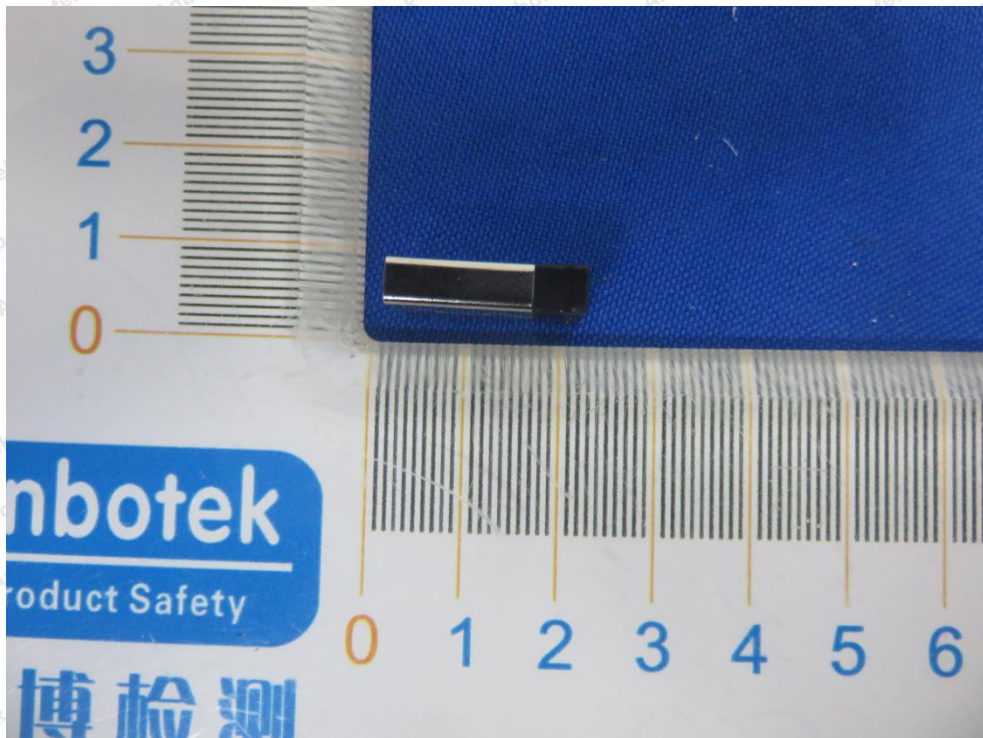
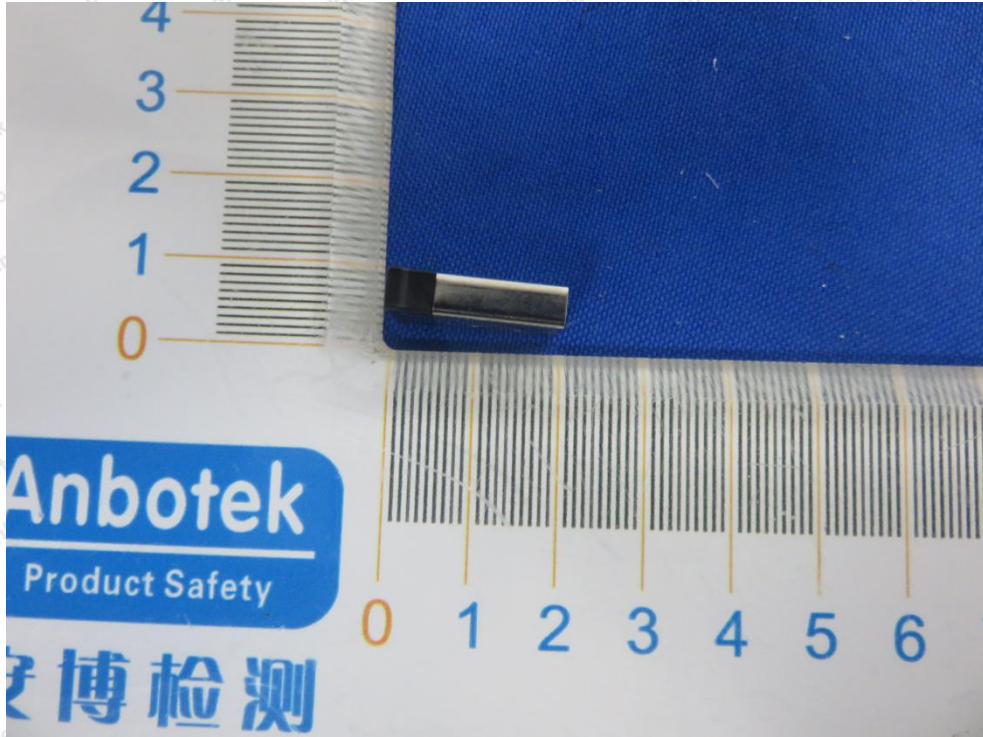


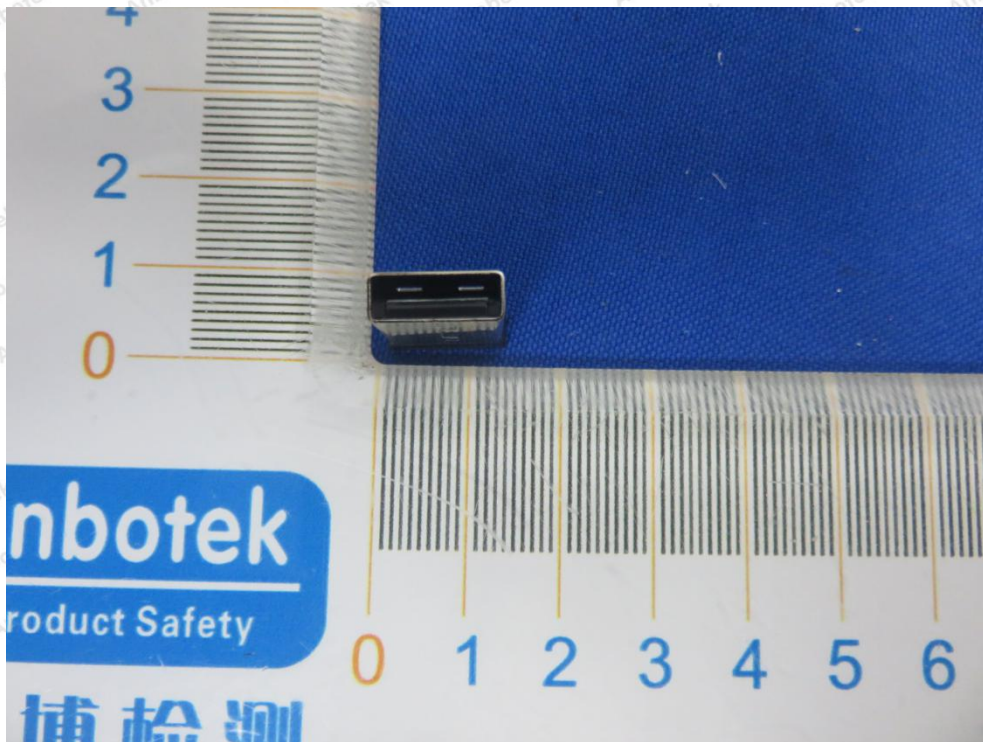
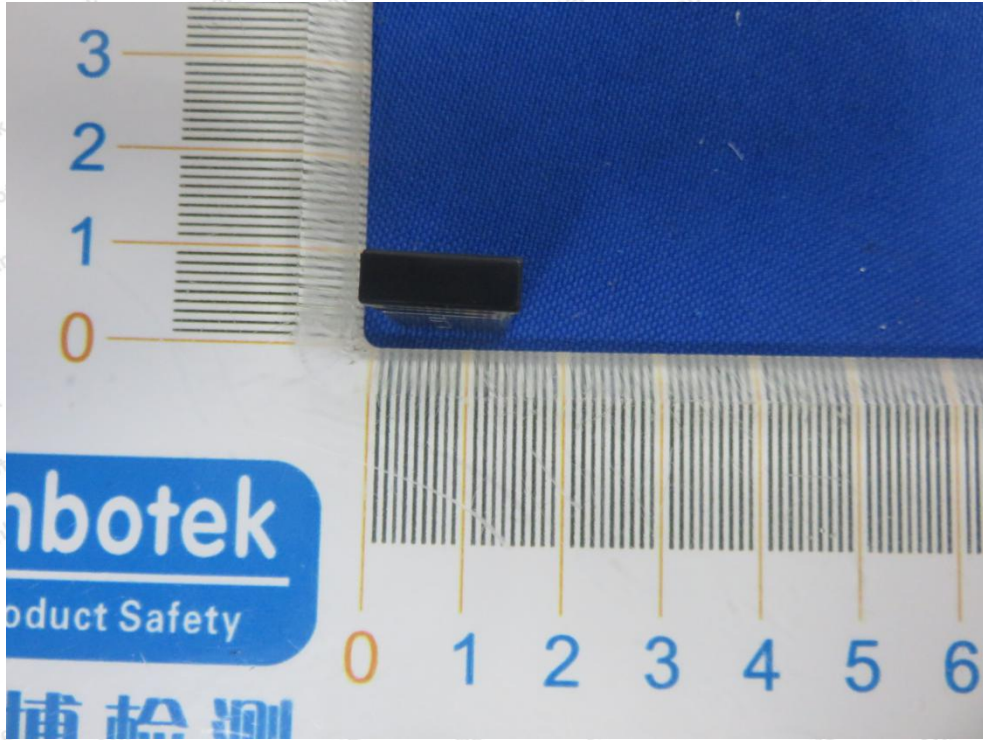




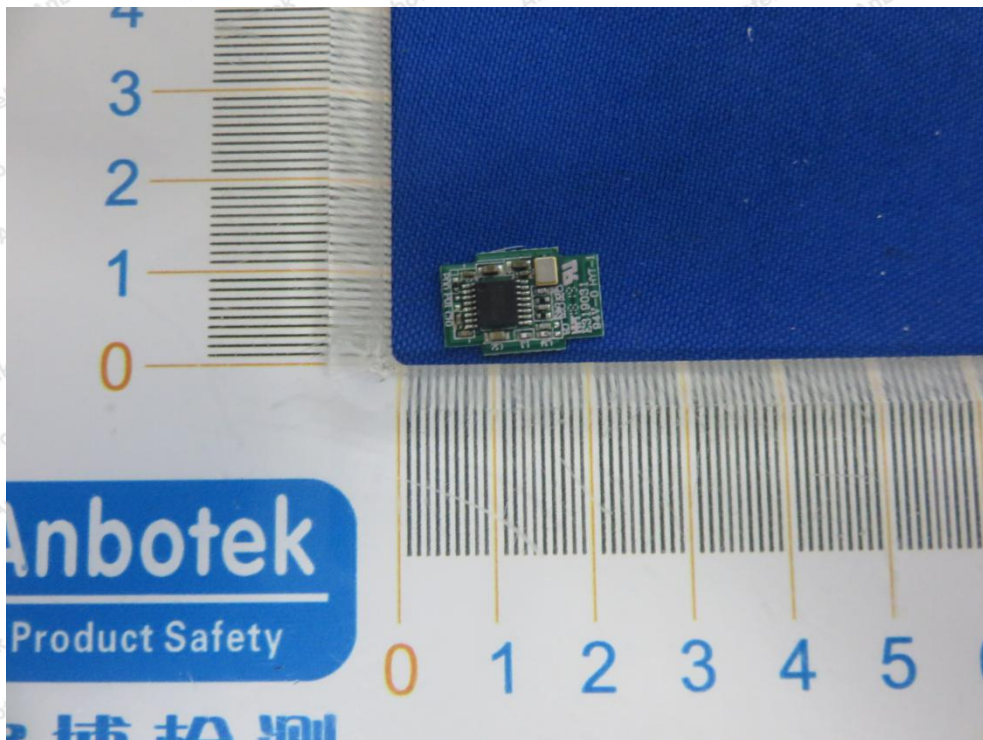
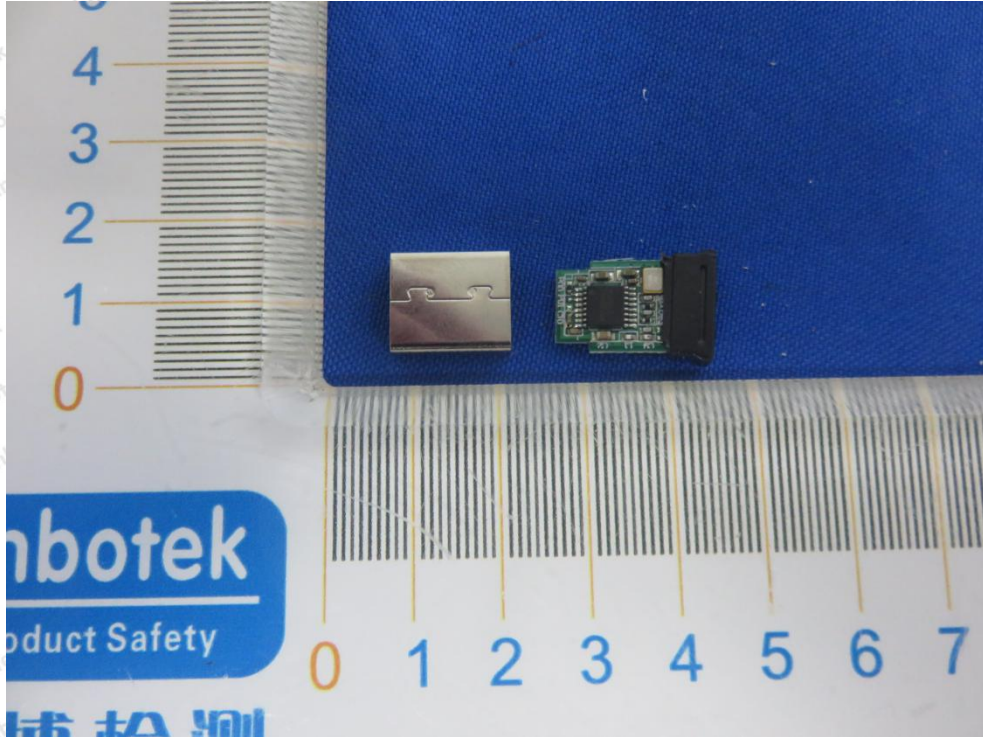
APPENDIX II -- EXTERNAL PHOTOGRAPH

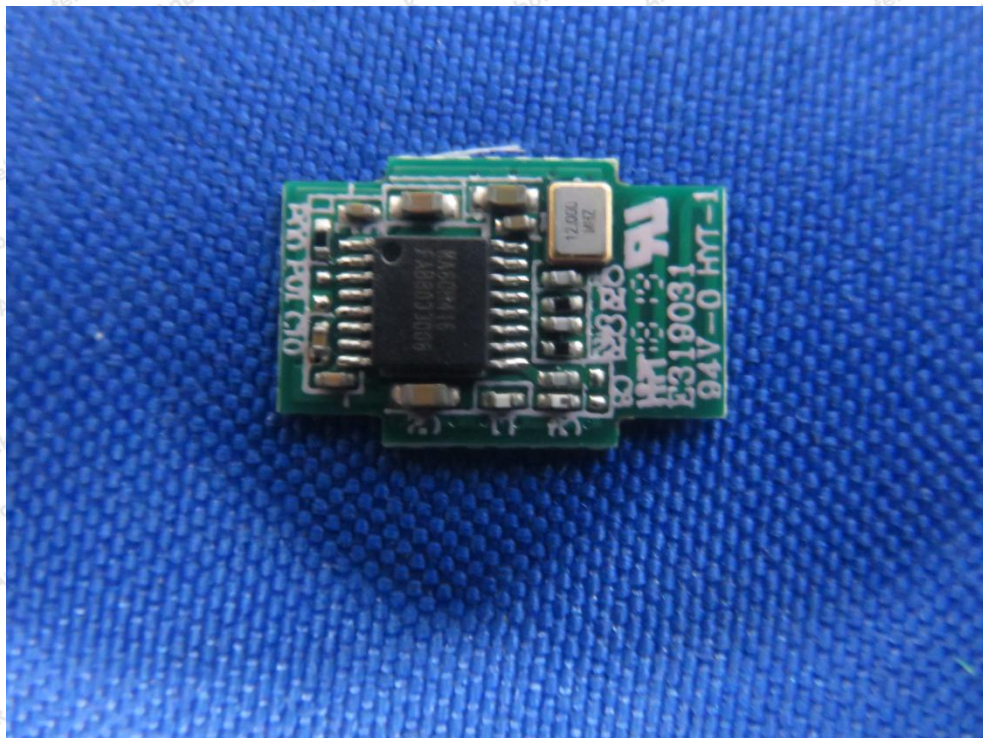
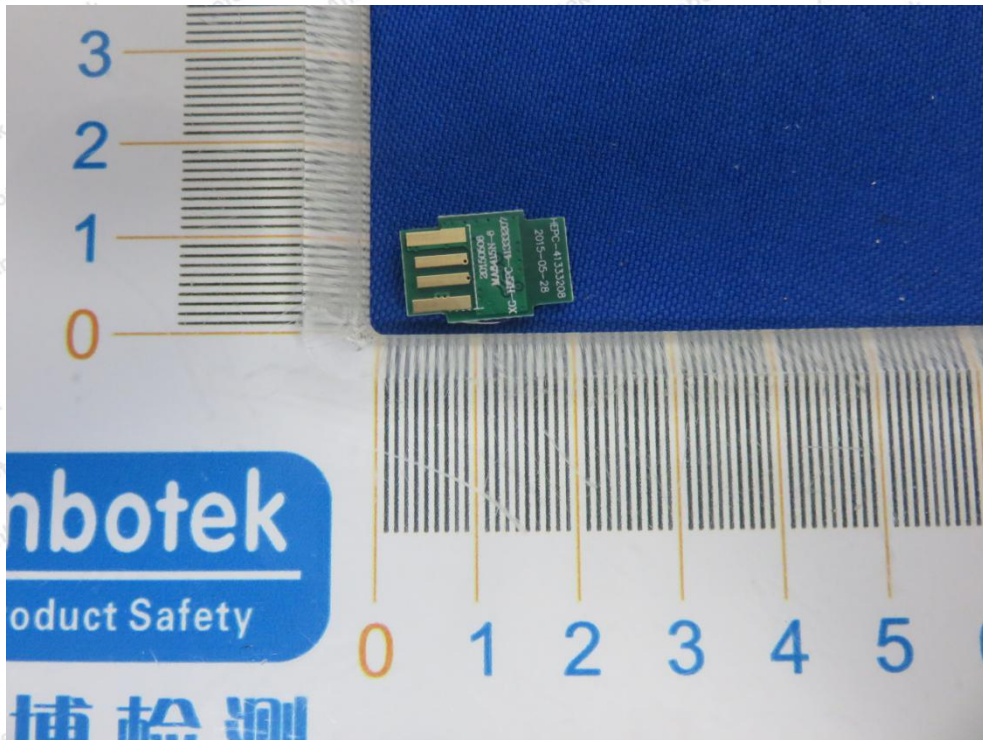






APPENDIX III -- INTERNAL PHOTOGRAPH







----- End of Report -----