



**TEST REPORT**  
**FCC PART 15 SUBPART B**

**Test report**  
**On Behalf of**  
**SANWA LIMITED**  
**For**  
**2.4G Wireless Mouse Receiver**

**Model No.: GMAERGW17RC**

**FCC ID: 2AMSUERGW17RC**

**Prepared for :** **SANWA LIMITED**  
**Room 1005, 10/F., Tower 2, Silvercord, 30 Canton Road, Tsim Sha Tsui,**  
**Kowloon, Hong Kong**

**Prepared By :** **Shenzhen HUAKE Testing Technology Co., Ltd.**  
**1F, B2 Building, Junfeng Zhongcheng Zhizao Innovation Park, Fuhai Street,**  
**Bao'an District, Shenzhen City, China**

**Date of Test:** **Oct. 24, 2018 ~ Oct. 30, 2018**

**Date of Report:** **Oct. 30, 2018**

**Report Number:** **HK1810301403E**



**TEST RESULT CERTIFICATION**

**Applicant's name** .....: SANWA LIMITED

**Address** .....: Room 1005, 10/F., Tower 2, Silvercord, 30 Canton Road, Tsim Sha Tsui, Kowloon, Hong Kong

**Manufacture's Name** .....: Dongguan Togran Electronics Co., Ltd.

**Address** .....: No.262, Shidan Road, The 3rd Industrial Zone, Juzhou, Shijie Town, Dongguan City, Guangdong Province, P.R.China.

**Product description**

**Trade Mark:** SANWA

**Product name**.....: 2.4G Wireless Mouse Receiver

**Model and/or type reference** ...: GMAERGW17RC

**Standards**.....: **47 CFR FCC Part 15 Subpart B 15.107&15.109**


This publication may be reproduced in whole or in part for non-commercial purposes as long as the Shenzhen HUAKE Testing Technology Co., Ltd. is acknowledged as copyright owner and source of the material. Shenzhen HUAKE Testing Technology Co., Ltd. takes no responsibility for and will not assume liability for damages resulting from the reader's interpretation of the reproduced material due to its placement and context.


**Date of Test** .....:


**Date (s) of performance of tests** .....: Oct. 24, 2018 ~ Oct. 30, 2018

**Date of Issue** .....: Oct. 30, 2018

**Test Result**.....: **Pass**

Testing Engineer :   
 \_\_\_\_\_  
 (Gary Qian)

Technical Manager :   
 \_\_\_\_\_  
 (Eden Hu)

Authorized Signatory :   
 \_\_\_\_\_  
 (Jason Zhou)



**TABLE OF CONTENTS**

**1.SUMMARY ..... 4**

1.1 TEST STANDARDS ..... 4

1.2 TEST DESCRIPTION..... 4

1.3 TEST FACILITY ..... 4

1.4 STATEMENT OF THE MEASUREMENT UNCERTAINTY ..... 5

**2.GENERAL INFORMATION..... 6**

2.1 ENVIRONMENTAL CONDITIONS..... 6

2.2 GENERAL DESCRIPTION OF EUT ..... 6

2.3. DESCRIPTION OF TEST MODES..... 6

2.4. RELATED SUBMITTAL(S) / GRANT (S) ..... 6

2.5. TEST METHODOLOGY ..... 6

2.6. ACCESSORIES USED..... 6

2.7 EQUIPMENT USED ..... 7

**3. RADIATED EMISSION ..... 8**

3.1. MEASUREMENT PROCEDURE ..... 8

3.2. TEST SETUP..... 10

3.3. TEST RESULT..... 11

**4. FCC LINE CONDUCTED EMISSION TEST ..... 13**

4.1. LIMITS OF LINE CONDUCTED EMISSION TEST ..... 13

4.2. BLOCK DIAGRAM OF LINE CONDUCTED EMISSION TEST ..... 13

4.3. PRELIMINARY PROCEDURE OF LINE CONDUCTED EMISSION TEST ..... 14

4.4. FINAL PROCEDURE OF LINE CONDUCTED EMISSION TEST ..... 14

4.5. TEST RESULT OF LINE CONDUCTED EMISSION TEST ..... 15

**APPENDIX A: PHOTOGRAPHS OF TEST SETUP ..... 17**

**APPENDIX B: PHOTOGRAPHS OF EUT ..... 19**



## 1.SUMMARY

### 1.1 TEST STANDARDS

This submittal(s) (test report) is intended to comply with Section 15.107&109 of the FCC Part 15, Subpart B Rules.

### 1.2 TEST DESCRIPTION

FCC RULES	DESCRIPTION OF TEST	RESULT
§15.109	Radiated Emission	Compliant
§15.107	Conducted Emission	Compliant

### 1.3 TEST FACILITY

#### 1.3.1 Address of the test laboratory

Shenzhen HUAKE Testing Technology Co., Ltd.

Add.:1F, B2 Building, Junfeng Zhongcheng Zhizao Innovation Park,Heping Community, Fuhai Street, Bao'an District, Shenzhen, China

There is one 3m semi-anechoic chamber and two line conducted labs for final test. The Test Sites meet the requirements in documents ANSI C63.4 and CISPR 32/EN 55032 requirements.

#### 1.3.2 Laboratory accreditation

The test facility is recognized, certified, or accredited by the following organizations:

#### **IC Registration No.: 21210**

The 3m alternate test site of Shenzhen HUAKE Testing Technology Co., Ltd. EMC Laboratory has been registered by Certification and Engineer Bureau of Industry Canada for the performance of with Registration No.: 21210 on May 24, 2016.

#### **FCC Registration No.: CN1229**

Test Firm Registration Number : 616276



#### 1.4 STATEMENT OF THE MEASUREMENT UNCERTAINTY

The data and results referenced in this document are true and accurate. The reader is cautioned that there may be errors within the calibration limits of the equipment and facilities. The measurement uncertainty was calculated for all measurements listed in this test report acc. to CISPR 16 - 4 "Specification for radio disturbance and immunity measuring apparatus and methods – Part 4: Uncertainty in EMC Measurements" and is documented in the Shenzhen HUAKE Testing Technology Co., Ltd. quality system acc. to DIN EN ISO/IEC 17025. Furthermore, component and process variability of devices similar to that tested may result in additional deviation. The manufacturer has the sole responsibility of continued compliance of the device.

Hereafter the best measurement capability for HUAKE laboratory is reported:

Test	Measurement Uncertainty	Notes
Radiated Emission 30~1000MHz	$\pm 4.10\text{dB}$	(1)
Radiated Emission Above 1GHz	$\pm 4.32\text{dB}$	(1)
Conducted Disturbance 0.15~30MHz	$\pm 3.20\text{dB}$	(1)

(1) This uncertainty represents an expanded uncertainty expressed at approximately the 95% confidence level using a coverage factor of  $k=2$ .



## 2. GENERAL INFORMATION

### 2.1 ENVIRONMENTAL CONDITIONS

During the measurement the environmental conditions were within the listed ranges:

Normal Temperature:	25°C
Relative Humidity:	55 %
Air Pressure:	101 kPa

### 2.2 GENERAL DESCRIPTION OF EUT

Product Name:	2.4G Wireless Mouse Receiver
Model/Type reference:	GMAERGW17RC
Power supply:	DC 5V
Highest Operation Frequency	2.474GHz
Hardware Version:	V1.0
Software Version:	V1.0

Note: For more details, refer to the user's manual of the EUT.

### 2.3. DESCRIPTION OF TEST MODES

NO.	TEST MODE DESCRIPTION
1	Date exchange with PC

Note: All the test modes had been tested, the mode 1 was the worst case recorded in the test report.

### 2.4. RELATED SUBMITTAL(S) / GRANT (S)

This submittal(s) (test report) is intended to comply with Section 15.107&109 of the FCC Part 15, Subpart B Rules.

### 2.5. TEST METHODOLOGY

Both conducted and radiated testing was performed according to the procedures in ANSI C63.4 (2014). Radiated testing was performed at an antenna to EUT distance 3 meters.

### 2.6. ACCESSORIES USED

Item	Equipment	Model No.	Specification	Remark
1	Dell PC	Ins 14-7460-D1525S	N/A	Provided by test lab
2	PC adapter	YH-195-462	DC19.5V/4.62A	Provided by test lab

**2.7 EQUIPMENT USED**

Item	Equipment	Manufacturer	Model No.	Serial No.	Last Cal.	Cal. Interval
1.	L.I.S.N. Artificial Mains Network	R&S	ENV216	HKE-002	Dec. 28, 2017	1 Year
2.	Receiver	R&S	ESCI 7	HKE-010	Dec. 28, 2017	1 Year
3.	RF automatic control unit	Tonscend	JS0806-2	HKE-060	Dec. 28, 2017	1 Year
4.	Horn Antenna	Schwarzbeck	BBHA 9170	HKE-090	Dec. 28, 2017	1 Year
5.	Spectrum analyzer	Agilent	N9020A	HKE-048	Dec. 28, 2017	1 Year
6.	Preamplifier	Schwarzbeck	BBV 9743	HKE-006	Dec. 28, 2017	1 Year
7.	EMI Test Receiver	Rohde & Schwarz	ESCI 7	HKE-010	Dec. 28, 2017	1 Year
8.	Bilog Broadband Antenna	Schwarzbeck	VULB9163	HKE-012	Dec. 28, 2017	1 Year
9.	Loop Antenna	Schwarzbeck	FMZB 1519 B	HKE-014	Dec. 28, 2017	1 Year
10.	Horn Antenna	Schwarzbeck	9120D	HKE-013	Dec. 28, 2017	1 Year
11.	Pre-amplifier	EMCI	EMC051845 SE	HKE-015	Dec. 28, 2017	1 Year
12.	Pre-amplifier	Agilent	83051A	HKE-016	Dec. 28, 2017	1 Year
13.	EMI Test Software EZ-EMC	Tonscend	JS1120-B Version	HKE-083	Dec. 28, 2017	N/A
14.	Shielded room	Shiel Hong	4*3*3	HKE-039	Dec. 28, 2017	3 Year

The calibration interval was one year



### 3. RADIATED EMISSION

#### 3.1. MEASUREMENT PROCEDURE

1. Configure the EUT according to ANSI C63.4. The EUT was placed on the top of the turntable 0.8 meter above ground. The phase center of the receiving antenna mounted on the top of a height-variable antenna tower was placed 3 meters far away from the turntable.
2. Power on the EUT and all the supporting units. The turntable was rotated by 360 degrees to determine the position of the highest radiation.
3. The height of the broadband receiving antenna was varied between one meter and four meters above ground to find the maximum emissions field strength of both horizontal and vertical polarization.
4. For each suspected emissions, the antenna tower was scan (from 1 M to 4 M) and then the turntable was rotated (from 0 degree to 360 degrees) to find the maximum reading.
5. Set the test-receiver system to Peak or CISPR quasi-peak Detect Function with specified bandwidth under Maximum Hold Mode.
6. For emissions below 1GHz, use 120KHz RBW and  $VBW \geq 3RBW$  for QP reading.
7. For emissions above 1GHz, use 1MHz RBW and 3MHz VBW for peak reading. Then 1MHz RBW and 10Hz VBW for average reading in spectrum analyzer.
8. When the radiated emissions limits are expressed in terms of the average value of the emissions, and pulsed operation is employed, the measurement field strength shall be determined by averaging over one complete pulse train, including blanking intervals, as long as the pulse train does not exceed 0.1 seconds. As an alternative (provided the transmitter operates for longer than 0.1 seconds) or in cases where the pulse train exceeds 0.1 seconds, the measured field strength shall be determined from the average absolute voltage during a 0.1 second interval during which the field strength is at its maximum values.
9. If the emissions level of the EUT in peak mode was 3 dB lower than the average limit specified, then testing will be stopped and peak values of EUT will be reported, otherwise, the emissions which do not have 3 dB margin will be repeated one by one using the quasi-peak method for below 1GHz.
10. For testing above 1GHz, the emissions level of the EUT in peak mode was lower than average limit (that means the emissions level in peak mode also complies with the limit in average mode), then testing will be stopped and peak values of EUT will be reported, otherwise, the emissions will be measured in average mode again and reported.
11. Only the worst case is reported.





The following table is the setting of spectrum analyzer and receiver.

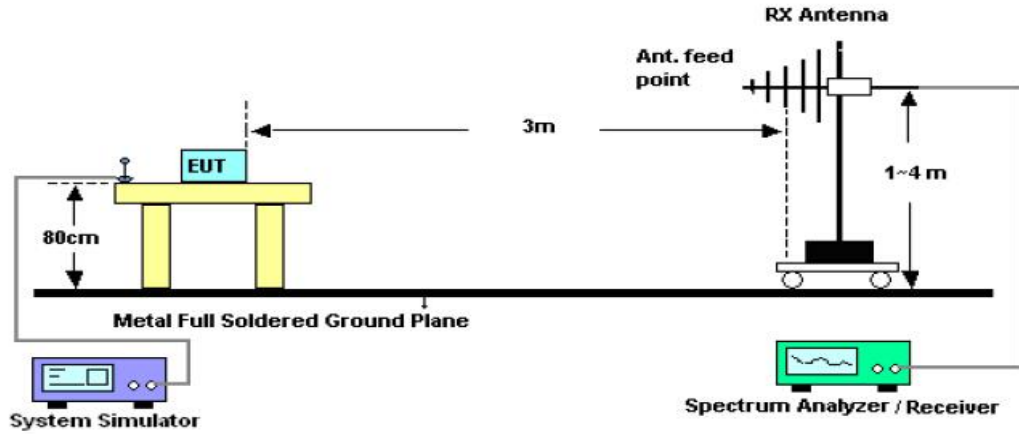
<b>Spectrum Parameter</b>	<b>Setting</b>
Start ~Stop Frequency	30MHz~1000MHz/RBW 120KHz for QP
Start ~Stop Frequency	1GHz~12.5GHz 1MHz/3MHz for Peak, 1MHz/10Hz for Average

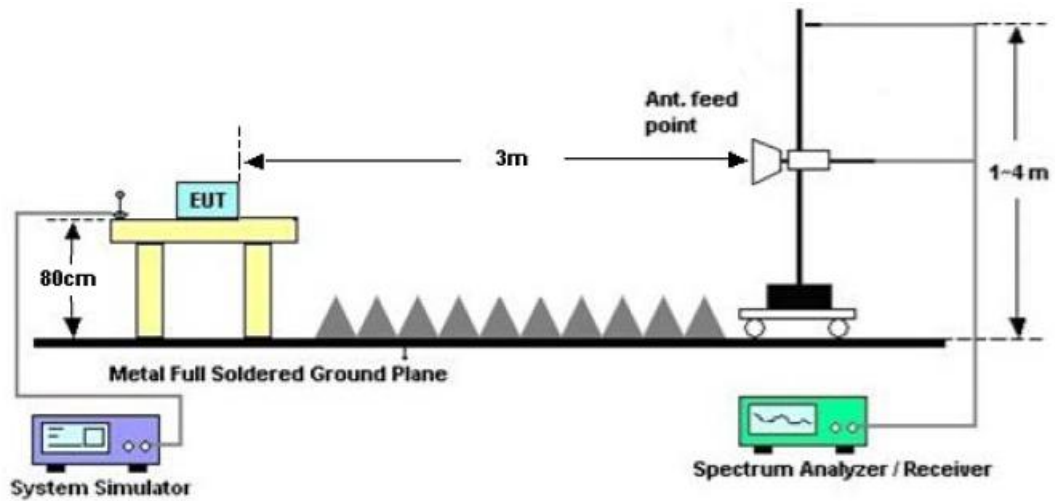
<b>Receiver Parameter</b>	<b>Setting</b>
Start ~Stop Frequency	30MHz~1000MHz/RBW 120KHz for QP

### 3.2. TEST SETUP

#### RADIATED EMISSION TEST SETUP 30MHz-1000MHz



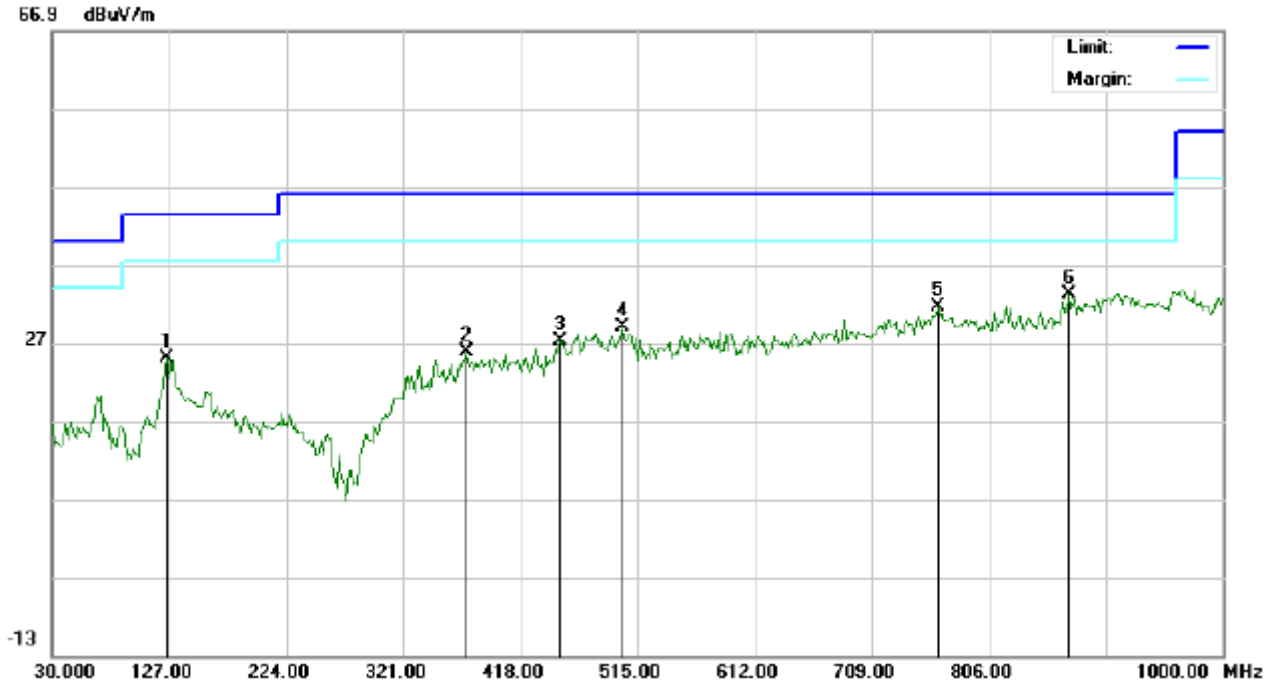
#### RADIATED EMISSION TEST SETUP ABOVE 1000MHz





### 3.3. TEST RESULT

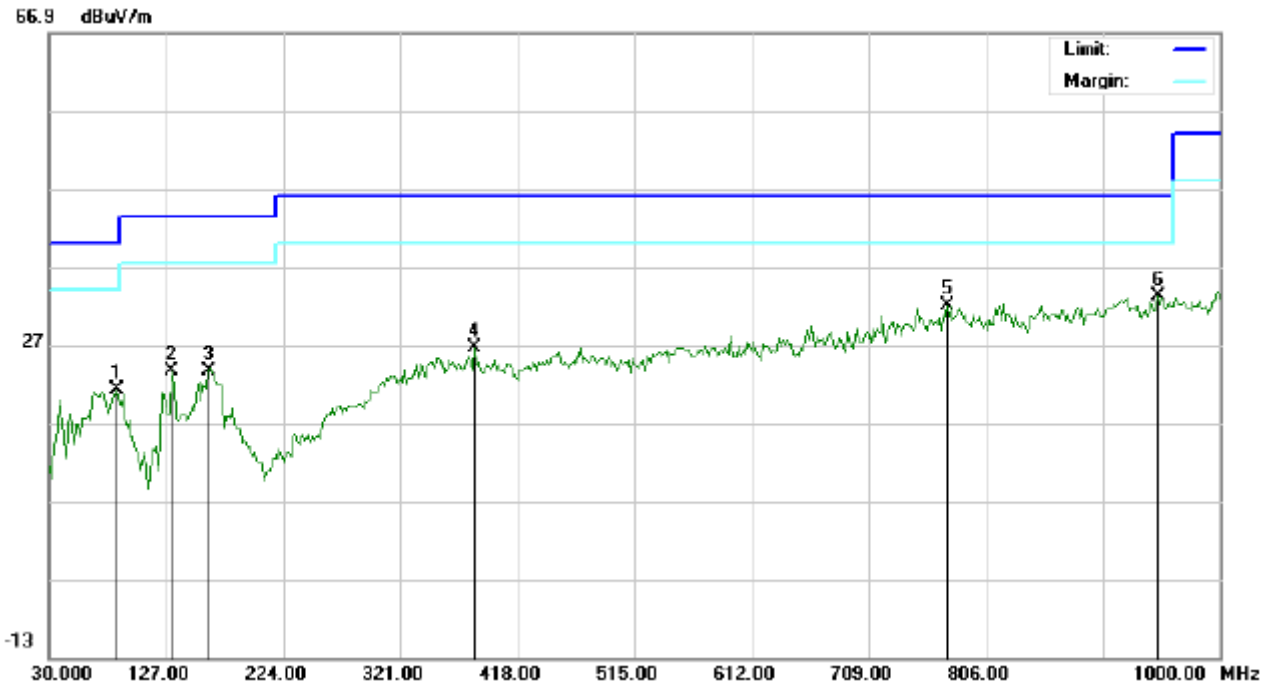
#### RADIATED EMISSION BELOW 1GHZ-Horizontal



No.	Mk.	Freq. MHz	Reading Level dBuV	Correct Factor dB	Measure- ment dBuV/m	Limit dBuV/m	Over dB	Detector	Comment
1		125.3833	16.67	8.37	25.04	43.50	-18.46	peak	
2		372.7331	6.91	18.89	25.80	46.00	-20.20	peak	
3		450.3333	6.71	20.59	27.30	46.00	-18.70	peak	
4		502.0667	7.76	21.19	28.95	46.00	-17.05	peak	
5		763.9663	4.75	26.82	31.57	46.00	-14.43	peak	
6	*	872.2833	5.36	27.89	33.25	46.00	-12.75	peak	



RADIATED EMISSION BELOW 1GHZ-Vertical



No.	Mk.	Freq. MHz	Reading Level dBuV	Correct Factor dB	Measure- ment dBuV/m	Limit dBuV/m	Over dB	Detector	Comment
1		86.5831	17.05	4.16	21.21	40.00	-18.79	peak	
2		131.8497	11.72	11.80	23.52	43.50	-19.98	peak	
3		162.5662	8.52	15.17	23.69	43.50	-19.81	peak	
4		382.4331	7.56	18.95	26.51	46.00	-19.49	peak	
5		773.6666	5.14	26.96	32.10	46.00	-13.90	peak	
6	*	948.2667	3.21	29.95	33.16	46.00	-12.84	peak	

**RESULT: PASS**

- Note:**
1. Factor=Antenna Factor + Cable loss - Amplifier gain, Margin=Measurement-Limit.
  2. The "Factor" value can be calculated automatically by software of measurement system.
  3. Emissions range from 1GHz to 30GHz have 20dB margin. No recording in the test report.

## 4. FCC LINE CONDUCTED EMISSION TEST

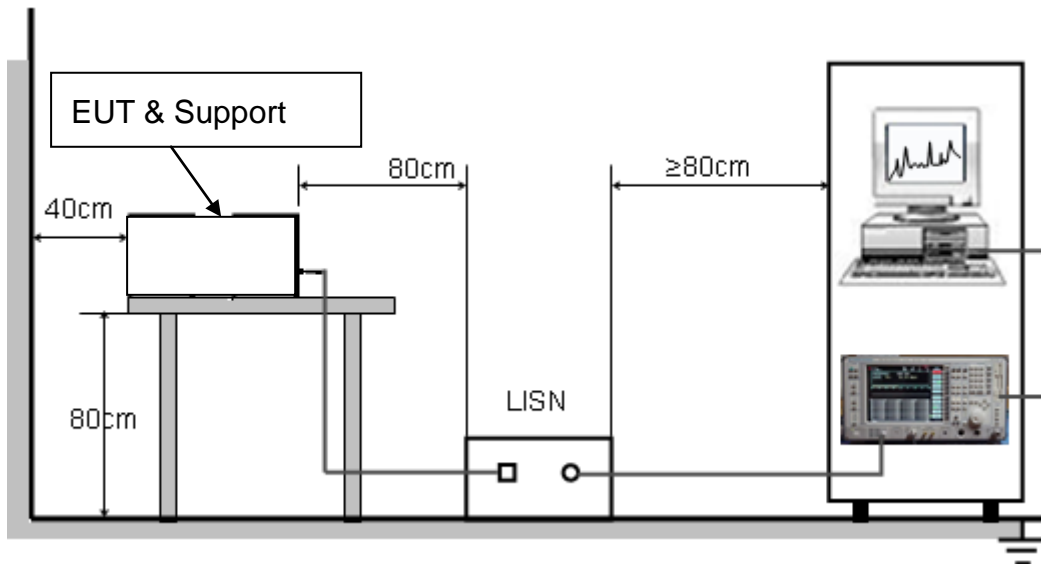
### 4.1. LIMITS OF LINE CONDUCTED EMISSION TEST

Frequency	Maximum RF Line Voltage	
	Q.P.( dBuV)	Average( dBuV)
150kHz~500kHz	66-56	56-46
500kHz~5MHz	56	46
5MHz~30MHz	60	50

Note:

1. The lower limit shall apply at the transition frequency.
2. The limit decreases linearly with the logarithm of the frequency in the range 0.15 MHz to 0.50 MHz.

### 4.2. BLOCK DIAGRAM OF LINE CONDUCTED EMISSION TEST





#### **4.3. PRELIMINARY PROCEDURE OF LINE CONDUCTED EMISSION TEST**

1. The equipment was set up as per the test configuration to simulate typical actual usage per the user's manual. When the EUT is a tabletop system, a wooden table with a height of 0.8 meters is used and is placed on the ground plane as per ANSI C63.4 (see Test Facility for the dimensions of the ground plane used). When the EUT is a floor-standing equipment, it is placed on the ground plane which has a 3-12 mm non-conductive covering to insulate the EUT from the ground plane.
2. Support equipment, if needed, was placed as per ANSI C63.4.
3. All I/O cables were positioned to simulate typical actual usage as per ANSI C63.4.
4. All support equipments received AC120V/60Hz power from a LISN, if any.
5. The EUT received DC charging voltage by PC which received 120V/60Hz power by a LISN..
6. The test program was started. Emissions were measured on each current carrying line of the EUT using a spectrum Analyzer / Receiver connected to the LISN powering the EUT. The LISN has two monitoring points: Line 1 (Hot Side) and Line 2 (Neutral Side). Two scans were taken: one with Line 1 connected to Analyzer / Receiver and Line 2 connected to a 50 ohm load; the second scan had Line 1 connected to a 50 ohm load and Line 2 connected to the Analyzer / Receiver.
7. Analyzer / Receiver scanned from 150 kHz to 30MHz for emissions in each of the test modes.
8. During the above scans, the emissions were maximized by cable manipulation.
9. The test mode(s) were scanned during the preliminary test.

Then, the EUT configuration and cable configuration of the above highest emission level were recorded for reference of final testing.

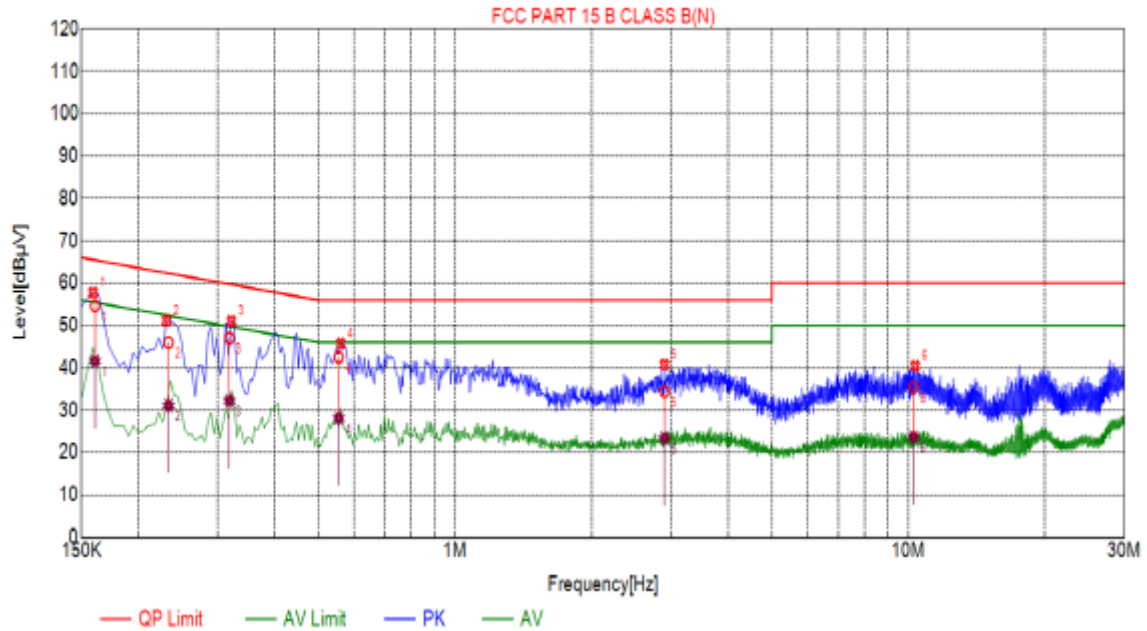
#### **4.4. FINAL PROCEDURE OF LINE CONDUCTED EMISSION TEST**

1. EUT and support equipment was set up on the test bench as per step 2 of the preliminary test.
2. A scan was taken on both power lines, Line 1 and Line 2, recording at least the six highest emissions. Emission frequency and amplitude were recorded into a computer in which correction factors were used to calculate the emission level and compare reading to the applicable limit. If EUT emission level was less -2dB to the A.V. limit in Peak mode, then the emission signal was re-checked using Q.P and Average detector.
3. The test data of the worst case condition(s) was reported on the Summary Data page.



### 4.5. TEST RESULT OF LINE CONDUCTED EMISSION TEST

#### Line Conducted Emission Test Line 1-L

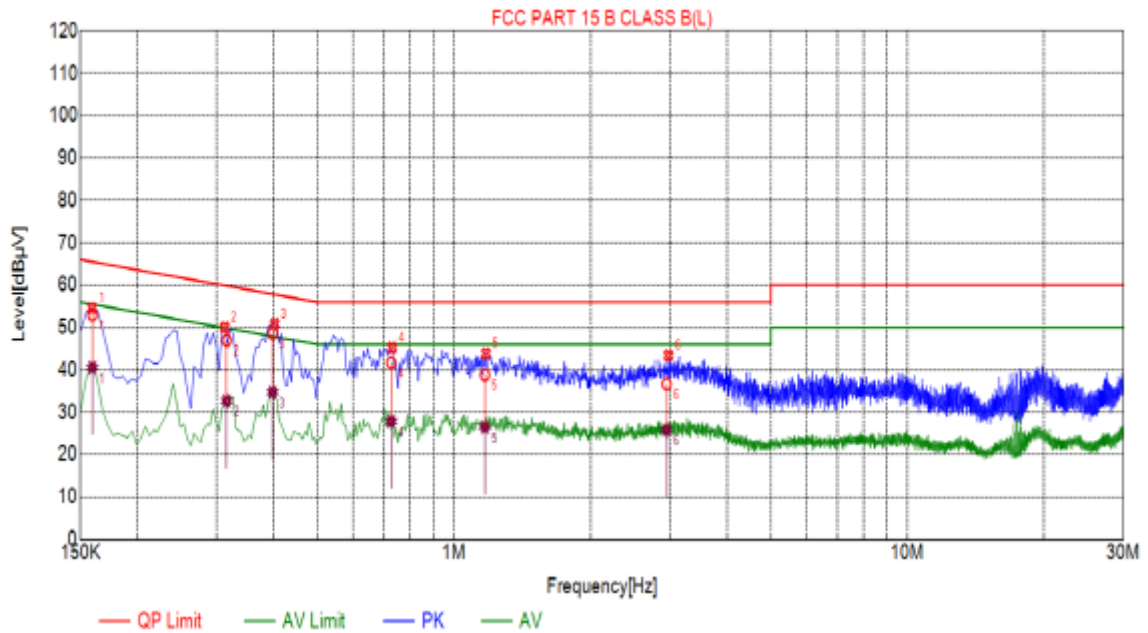


Suspected List						
NO.	Freq. [MHz]	Level [dBµV]	Factor [dB]	Limit [dBµV]	Margin [dB]	Detector
1	0.1590	57.76	10.01	65.52	7.76	PK
2	0.2310	51.16	10.03	62.41	11.25	PK
3	0.3210	51.05	10.05	59.68	8.63	PK
4	0.5595	45.74	10.06	56.00	10.26	PK
5	2.8995	40.73	10.21	56.00	15.27	PK
6	10.3605	40.41	10.05	60.00	19.59	PK

Final Data List								
NO.	Freq. [MHz]	Factor [dB]	QP Value [dBµV]	QP Limit [dBµV]	QP Margin [dB]	AV Value [dBµV]	AV Limit [dBµV]	AV Margin [dB]
1	0.1606	10.00	54.62	65.43	10.81	41.64	55.43	13.79
2	0.2333	10.03	45.99	62.33	16.34	31.13	52.33	21.20
3	0.3178	10.05	47.02	59.76	12.74	32.20	49.76	17.56
4	0.5539	10.06	42.55	56.00	13.45	28.10	46.00	17.90
5	2.9001	10.21	34.34	56.00	21.66	23.38	46.00	22.62
6	10.2765	10.05	35.42	60.00	24.58	23.68	50.00	26.32



Line Conducted Emission Test Line 2-N



Suspected List						
NO.	Freq. [MHz]	Level [dBμV]	Factor [dB]	Limit [dBμV]	Margin [dB]	Detector
1	0.1590	54.60	10.01	65.52	10.92	PK
2	0.3120	50.04	10.05	59.92	9.88	PK
3	0.4020	50.85	10.04	57.81	6.96	PK
4	0.7305	45.23	10.06	56.00	10.77	PK
5	1.1760	43.85	10.09	56.00	12.15	PK
6	2.9715	43.40	10.22	56.00	12.60	PK

Final Data List								
NO.	Freq. [MHz]	Factor [dB]	QP Value [dBμV]	QP Limit [dBμV]	QP Margin [dB]	AV Value [dBμV]	AV Limit [dBμV]	AV Margin [dB]
1	0.1593	10.00	52.98	65.50	12.52	40.54	55.50	14.96
2	0.3151	10.05	46.98	59.83	12.85	32.67	49.83	17.16
3	0.3980	10.04	48.62	57.90	9.28	34.72	47.90	13.18
4	0.7267	10.06	41.71	56.00	14.29	27.84	46.00	18.16
5	1.1685	10.09	38.77	56.00	17.23	26.54	46.00	19.46
6	2.9441	10.21	36.63	56.00	19.37	25.82	46.00	20.18

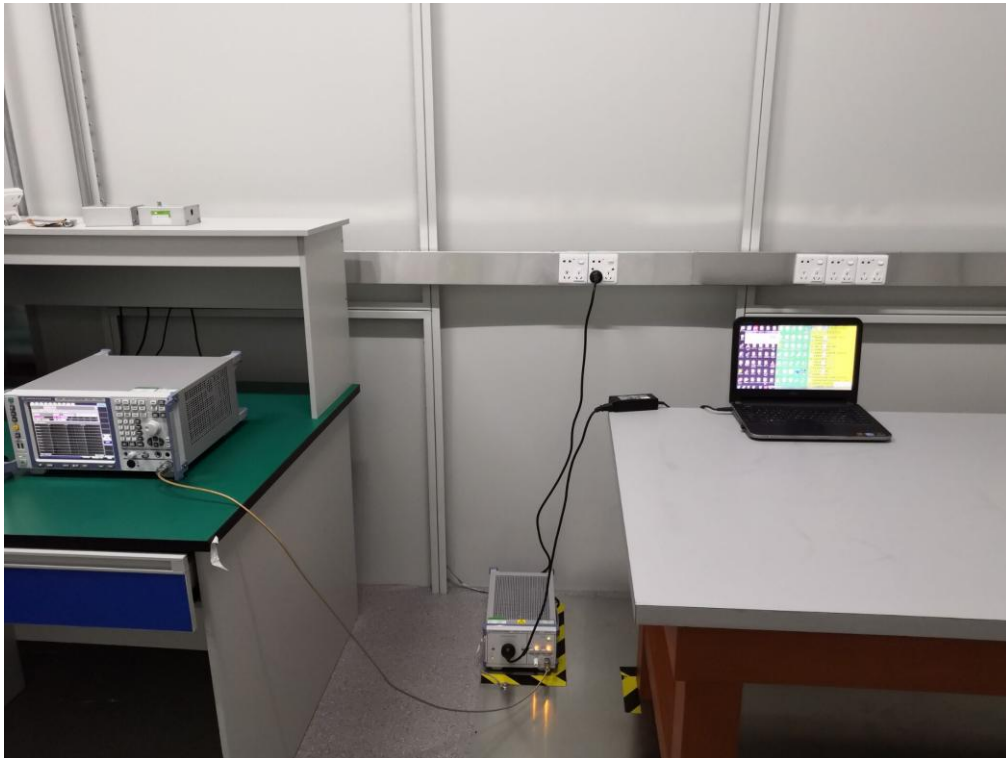
**RESULT: PASS**

Note: All the test modes had been tested, the mode 1 was the worst case. Only the data of the worst case would be record in this test report.



## APPENDIX A: PHOTOGRAPHS OF TEST SETUP

### FCC LINE CONDUCTED EMISSION TEST SETUP

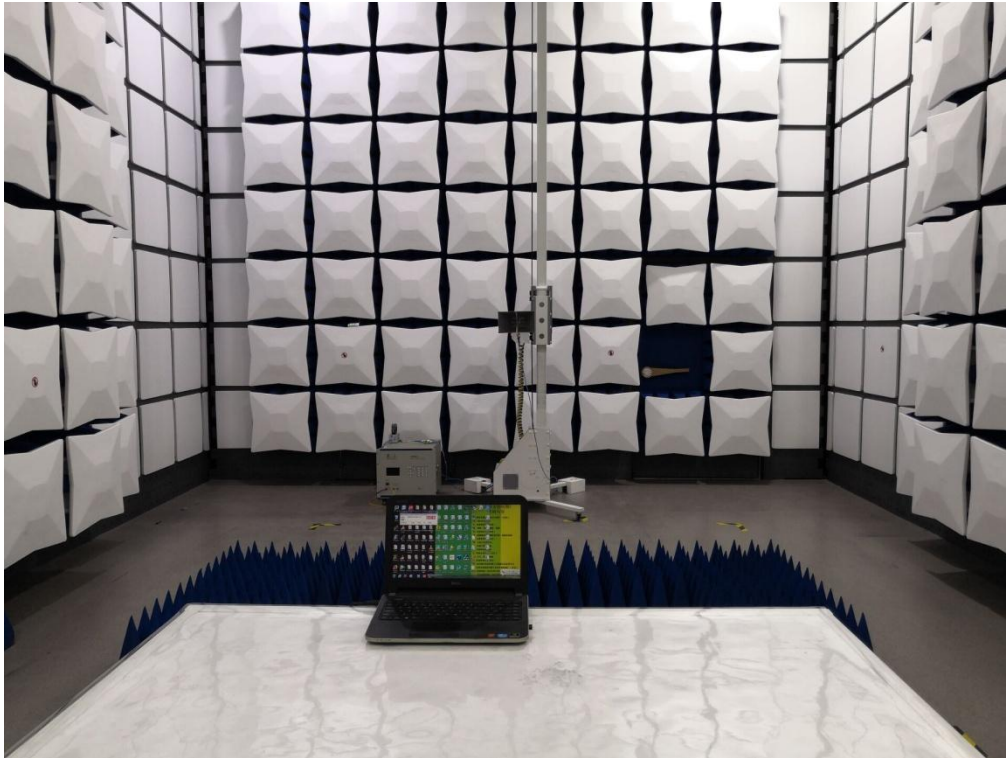


### FCC RADIATED EMISSION TEST SETUP BELOW 1GHZ





### FCC RADIATED EMISSION TEST SETUP ABOVE 1GHZ



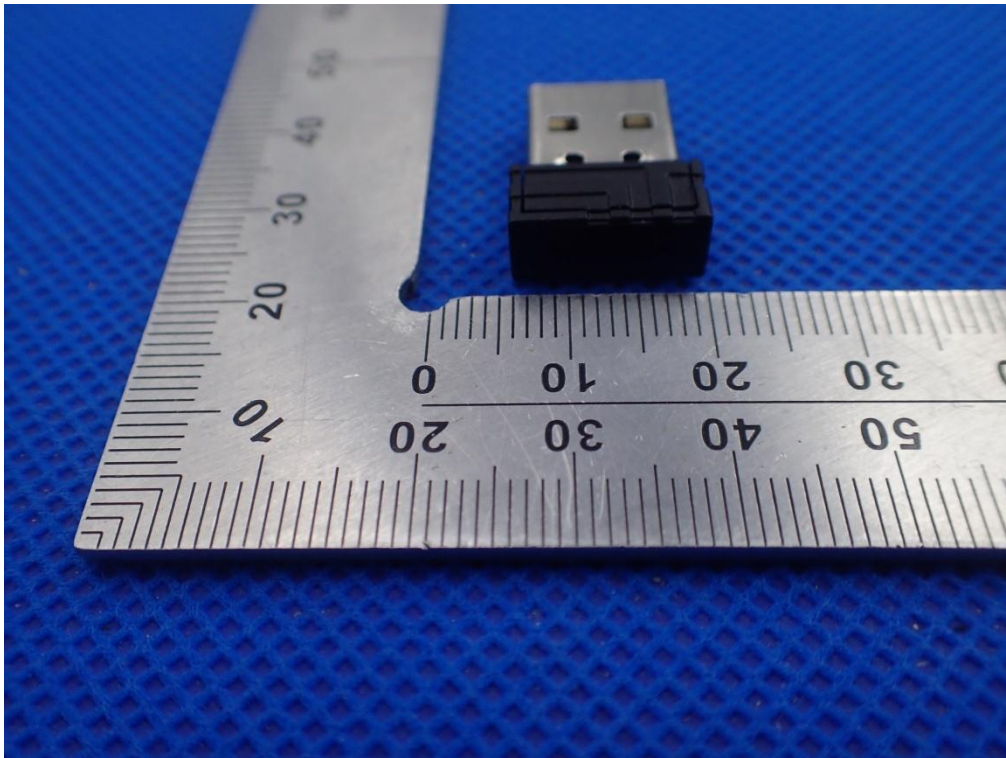


**APPENDIX B: PHOTOGRAPHS OF EUT**  
ALL VEIW OF EUT

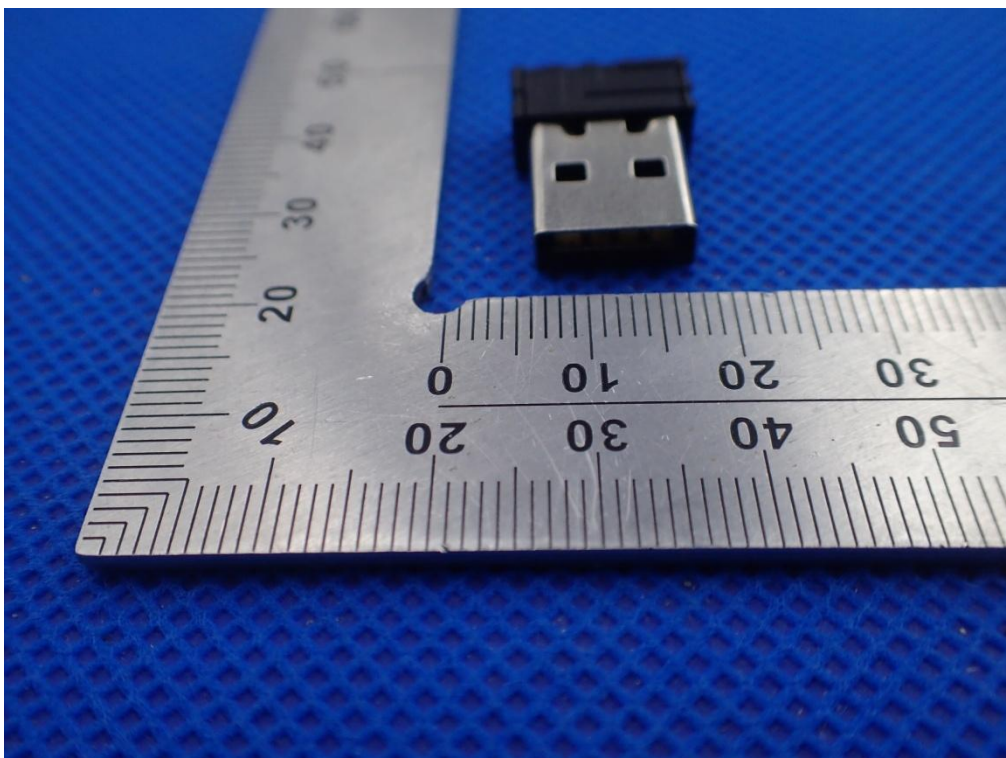




TOP VIEW OF EUT

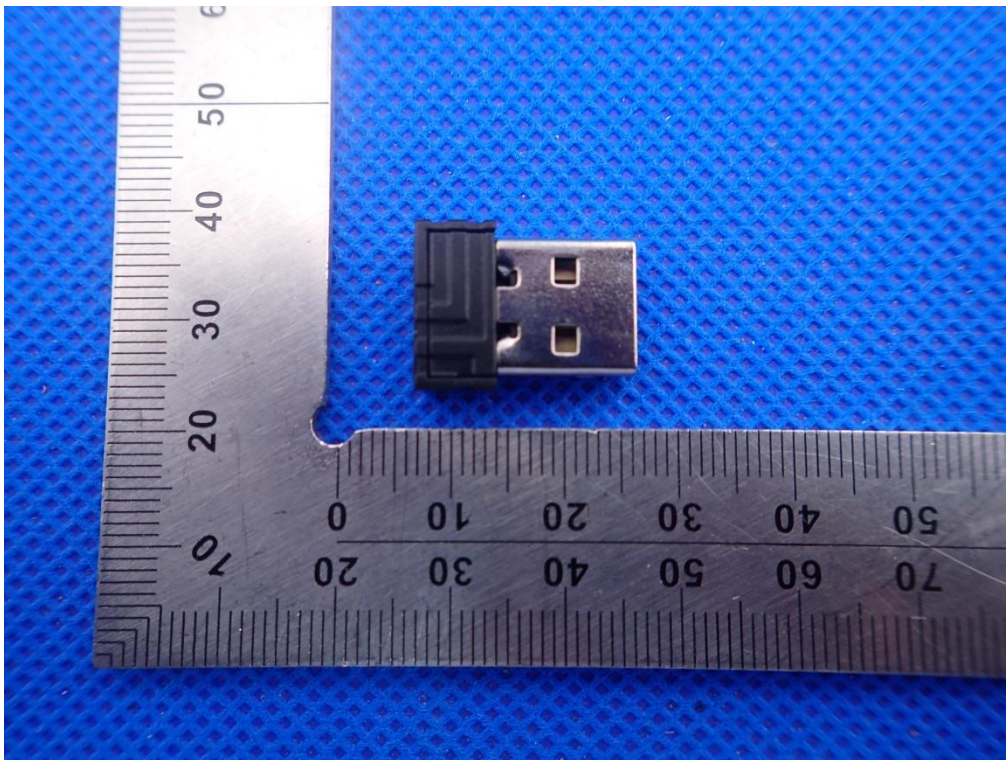


BOTTOM VIEW OF EUT

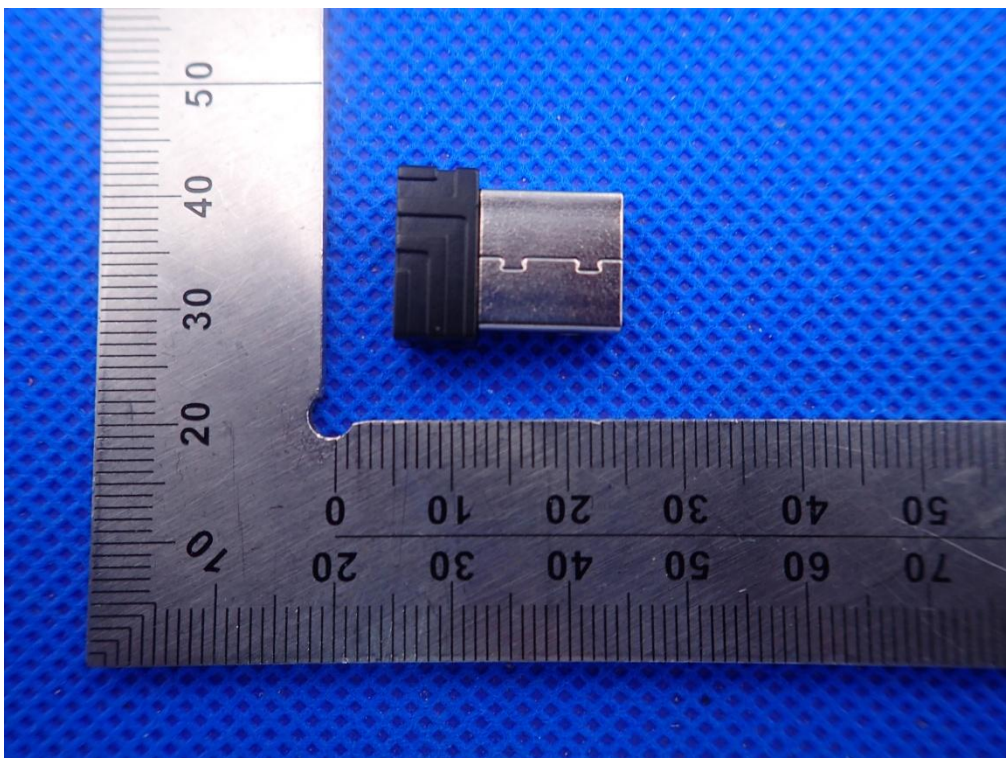




FRONT VIEW OF EUT

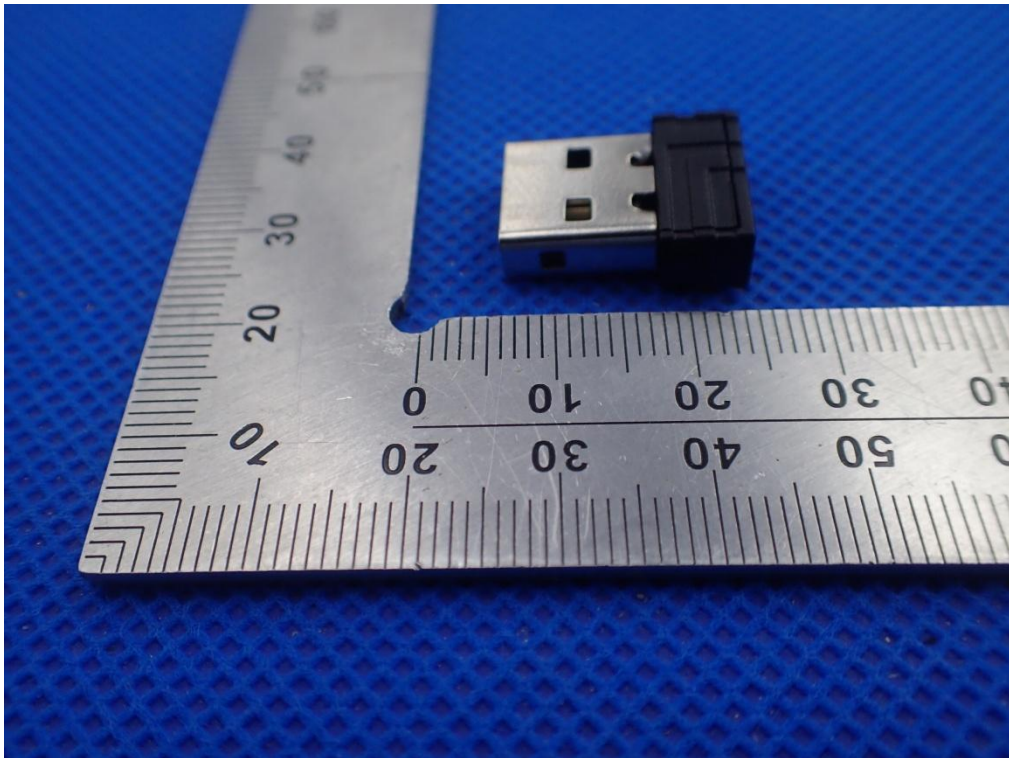


BACK VIEW OF EUT

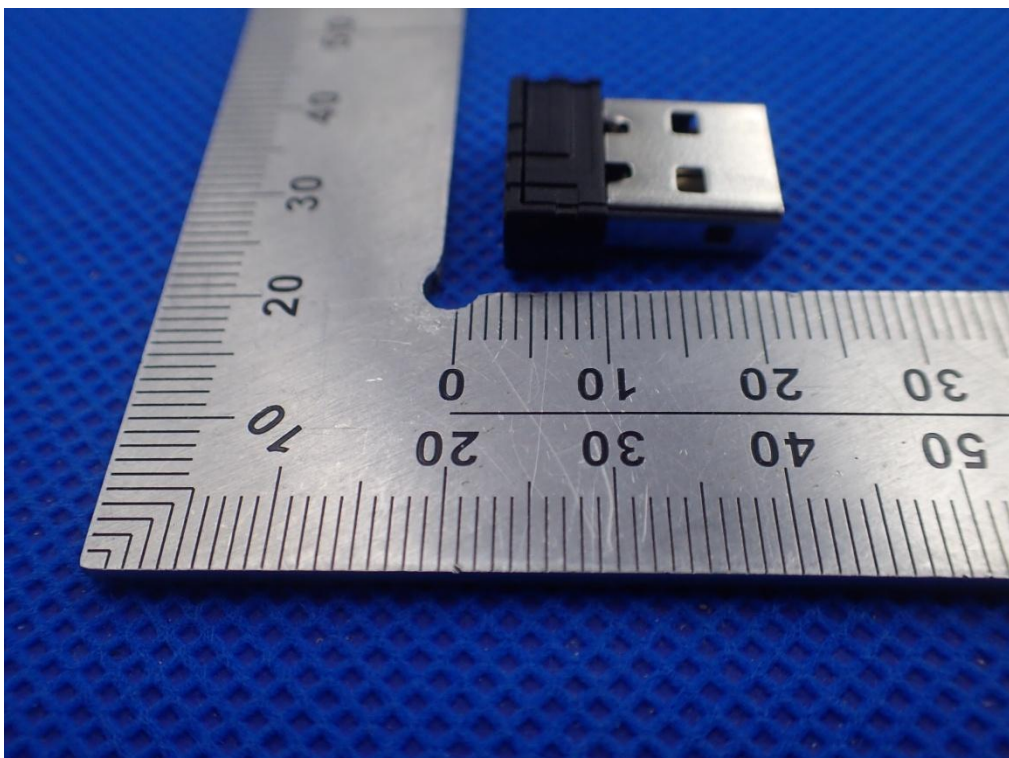




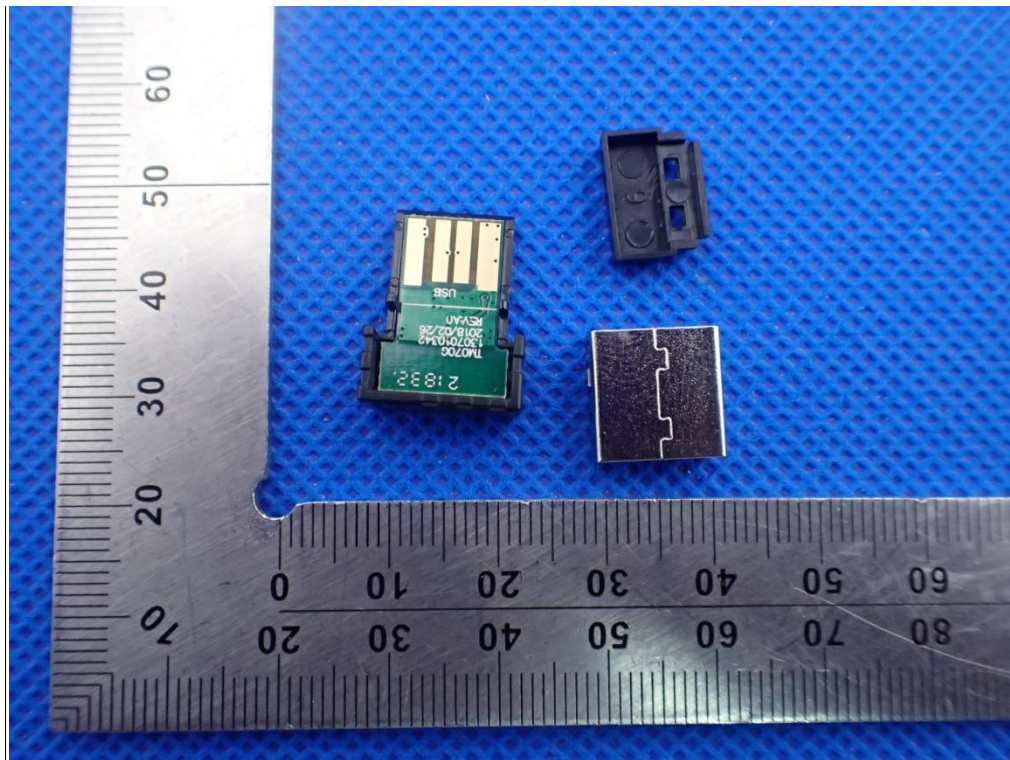
LEFT VIEW OF EUT



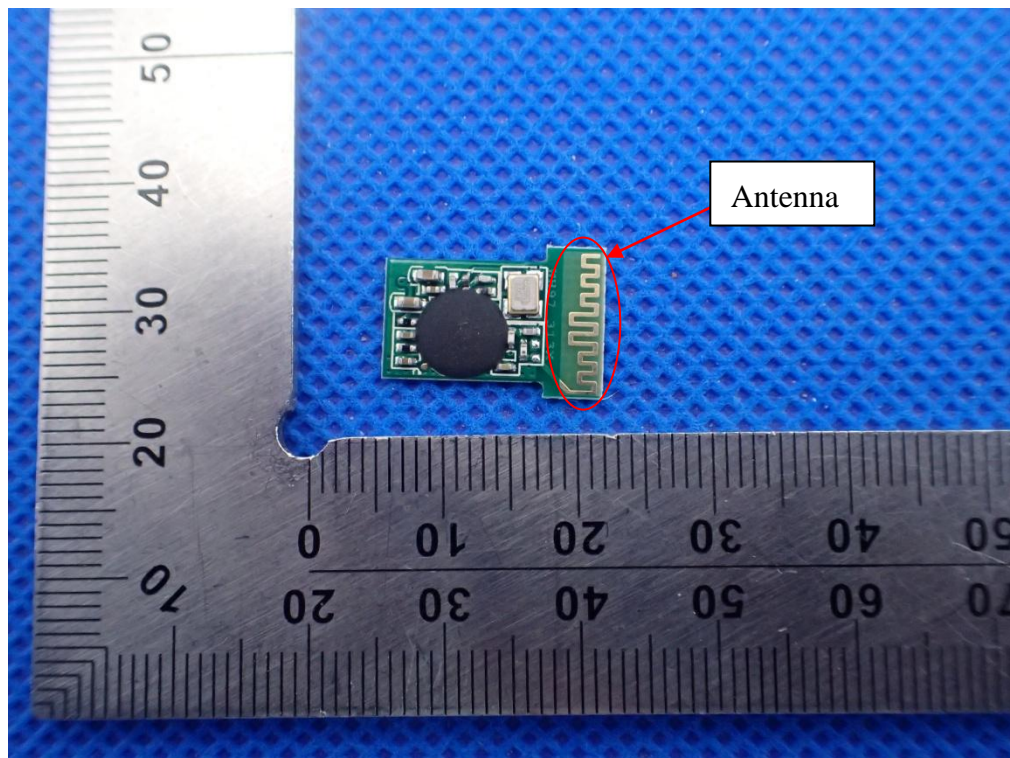
RIGHT VIEW OF EUT



OPEN VIEW OF EUT 1

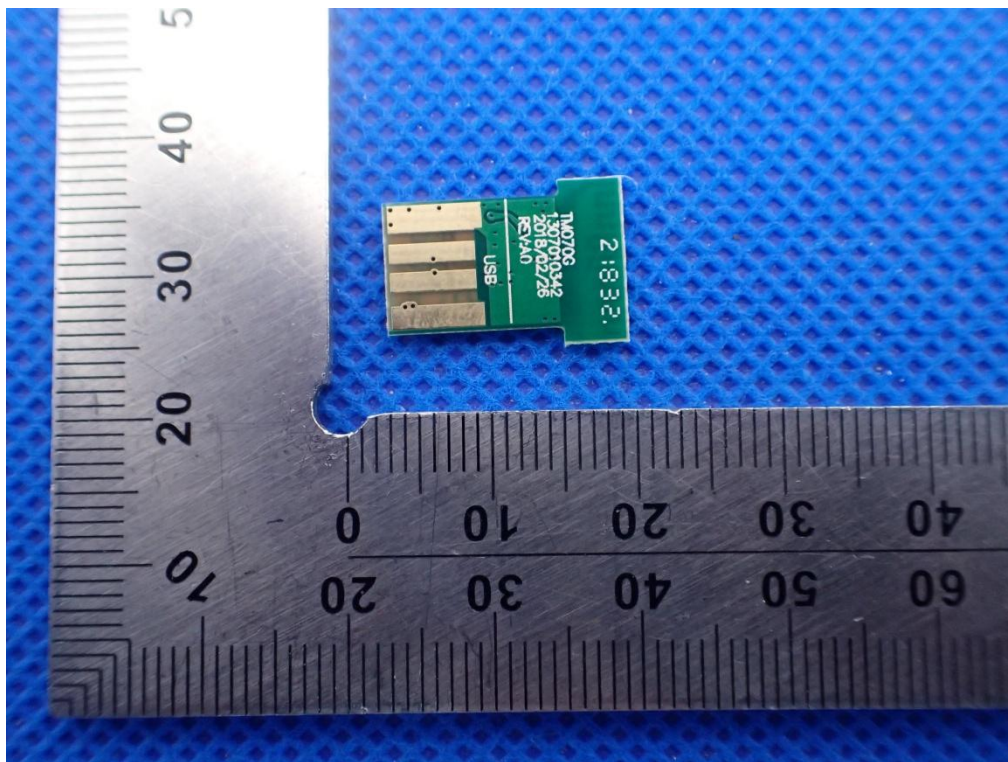


INTERNAL VIEW OF EUT-1





INTERNAL VIEW OF EUT-2



----END OF REPORT---