



FCC TEST REPORT

FCC PART 15 SUBPART C 15.249

Test report
On Behalf of
SANWA LIMITED
For
Bluetooth Mouse
Model No.: GMAERGBT15

FCC ID: 2AMSUERGBT15

Prepared for : **SANWA LIMITED**
Room 1005, 10/F., Tower 2, Silvercord, 30 Canton Road, Tsim Sha Tsui,
Kowloon, Hong Kong

Prepared By : **Shenzhen HUAKE Testing Technology Co., Ltd.**
1F, B2 Building, Junfeng Zhongcheng Zhizao Innovation Park, Fuhai
Street, Bao'an District, Shenzhen City, China

Date of Test: **Nov. 13, 2018 ~ Nov. 29, 2018**
Date of Report: **Nov. 30, 2018**
Report Number: **HK1811221684E**



TEST RESULT CERTIFICATION

Applicant's name..... SANWA LIMITED
Address..... Room 1005, 10/F., Tower 2, Silvercord, 30 Canton Road, Tsim Sha Tsui,
Kowloon, Hong Kong

Manufacture's Name Dongguan Togran Electronics Co., Ltd.
Address..... No.262, Shidan Road, The 3rd Industrial Zone, Juzhou, Shijie Town, Dongguan
City,
Guangdong Province, P.R.China.

Factory's Name..... Dongguan Togran Electronics Co., Ltd.
Address..... No.262, Shidan Road, The 3rd Industrial Zone, Juzhou, Shijie Town, Dongguan
City,
Guangdong Province, P.R.China.


Product description

Trade Mark..... SANWA
Product name..... Bluetooth Mouse
Model and/or type reference.... GMAERGBT15


Standards..... FCC Rules and Regulations Part 15 Subpart C Section 15.249
ANSI C63.10: 2013

This publication may be reproduced in whole or in part for non-commercial purposes as long as the Shenzhen HUAK Testing Technology Co., Ltd. is acknowledged as copyright owner and source of the material. Shenzhen HUAK Testing Technology Co., Ltd. takes no responsibility for and will not assume liability for damages resulting from the reader's interpretation of the reproduced material due to its placement and context.


Date of Test :
Date (s) of performance of tests..... : Nov. 13, 2018 ~ Nov. 29, 2018
Date of Issue : Nov. 30, 2018
Test Result : **Pass**

Testing Engineer : 

(Gary Qian)

Technical Manager : 

(Eden Hu)

Authorized Signatory : 

(Jason Zhou)



Table of Contents	Page
1 . TEST SUMMARY	4
2 . GENERAL INFORMATION	5
2.1 GENERAL DESCRIPTION OF EUT	5
2.2 OPERATION OF EUT DURING TESTING	6
2.3 DESCRIPTION OF TEST SETUP	7
2.4 MEASUREMENT INSTRUMENTS LIST	8
3. RADIATED EMISSION	9
3.1. MEASUREMENT PROCEDURE	9
3.2. TEST SETUP	11
3.3. TEST RESULT	12
4. BAND EDGE EMISSION	16
4.1. MEASUREMENT PROCEDURE	16
4.2 TEST SETUP	16
4.3 RADIATED TEST RESULT	17
5. BANDWIDTH	21
5.1. MEASUREMENT PROCEDURE	21
5.2. TEST SETUP	21
5.3. TEST RESULT	22
6. FCC LINE CONDUCTED EMISSION TEST	24
6.1. LIMITS OF LINE CONDUCTED EMISSION TEST	24
6.2. BLOCK DIAGRAM OF LINE CONDUCTED EMISSION TEST	24
6.3. PRELIMINARY PROCEDURE OF LINE CONDUCTED EMISSION TEST	25
6.4. FINAL PROCEDURE OF LINE CONDUCTED EMISSION TEST	25
6.5. TEST RESULT OF LINE CONDUCTED EMISSION TEST	25
APPENDIX A: PHOTOGRAPHS OF TEST SETUP	26
APPENDIX B: PHOTOGRAPHS OF EUT	28



1. TEST SUMMARY

1.1 TEST PROCEDURES AND RESULTS

FCC RULES	DESCRIPTION OF TEST	RESULT
§15.249&15.209	Radiated Emission	Compliant
§15.249&15.209	Band Edges Emission	Compliant
§15.215	20dB bandwidth	Compliant
§15.207	Conducted Emission	N/A

Note: N/A means it's not applicable to this item.

1.2 TEST FACILITY

Test Firm : Shenzhen HUAKE Testing Technology Co., Ltd.

Address : 1F, B2 Building, Junfeng Zhongcheng Zhizao Innovation Park,
Fuhai Street, Bao'an District, Shenzhen City, China

Designation Number: : CN1229

Test Firm Registration Number : 616276

1.3 MEASUREMENT UNCERTAINTY

Measurement Uncertainty

Conducted Emission Expanded Uncertainty = 2.23dB, k=2

Radiated emission expanded uncertainty(9kHz-30MHz) = 3.08dB, k=2

Radiated emission expanded uncertainty(30MHz-1000MHz) = 4.42dB, k=2

Radiated emission expanded uncertainty(Above 1GHz) = 4.06dB, k=2



2. GENERAL INFORMATION

2.1 GENERAL DESCRIPTION OF EUT

Operation Frequency	2.402 GHz to 2.480GHz
Maximum field strength	89.36dBuV/m(Peak)@3m
Bluetooth Version	V3.0
Modulation	GFSK
Number of channels	79 for BR
Antenna Gain	-4dBi
Antenna Designation	PCB Antenna
Hardware Version	V1.0
Software Version	V1.0
Power Supply	DC 3V by battery
Note: 1. The EUT only support GFSK. 2. The EUT is power supplied by AAA battery.	

BR channel List

Frequency Band	Channel Number	Frequency
2400~2483.5MHZ	0	2402MHZ
	1	2403MHZ
	:	:
	38	2440 MHZ
	39	2441 MHZ
	40	2442 MHZ
	:	:
	77	2479 MHZ
	78	2480 MHZ



2.2 OPERATION OF EUT DURING TESTING

NO.	TEST MODE DESCRIPTION
1	Low channel GFSK
2	Middle channel GFSK
3	High channel GFSK

Note:

1. Only the data of the worst case recorded in the test report.
2. For Radiated Emission, 3axis were chosen for testing for each applicable mode.

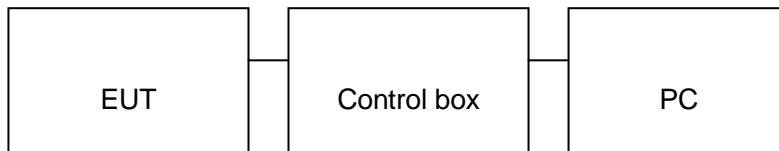


2.3 DESCRIPTION OF TEST SETUP

Configure 1: (Normal hopping)



Configure 2: (Control continuous TX)



Item	Equipment	Mfr/Brand	Model/Type No.	Remark
1	Bluetooth Mouse	SANWA	GMAERGBT15	EUT
2	Battery	NANFU	AAA	A.E
3	PC	APPLE	A1465	A.E
4	Control box	GZUT	N/A	A.E
5	USB Cable	N/A	1m unshielded	A.E



2.4 MEASUREMENT INSTRUMENTS LIST

TEST EQUIPMENT OF RADIATED EMISSION TEST

Item	Equipment	Manufacturer	Model No.	Lab Equipment No.	Last Cal.	Cal. Interval
1.	Spectrum analyzer	Agilent	N9020A	HKE-048	Dec. 28, 2017	1 Year
2.	Preamplifier	Schwarzbeck	BBV 9743	HKE-006	Dec. 28, 2017	1 Year
3.	EMI Test Receiver	Rohde & Schwarz	ESCI 7	HKE-010	Dec. 28, 2017	1 Year
4.	Bilog Broadband Antenna	Schwarzbeck	VULB9163	HKE-012	Dec. 28, 2017	1 Year
5.	Loop Antenna	Schwarzbeck	FMZB 1519 B	HKE-014	Dec. 28, 2017	1 Year
6.	Horn Antenna	Schwarzbeck	9120D	HKE-013	Dec. 28, 2017	1 Year
7.	Broad-band Horn Antenna	A-INFOMW	LB-180400-KF	HKE-031	Dec. 28, 2017	1 Year
8.	Pre-amplifier	EMCI	EMC051845SE	HKE-015	Dec. 28, 2017	1 Year
9.	Pre-amplifier	Agilent	83051A	HKE-016	Dec. 28, 2017	1 Year
10.	Filter (2.4-2.483GHz)	Micro-tronics	087	--	N/A	N/A
11.	Radiation Cable 1	MXT	HK1	R05	N/A	N/A
12.	Radiation Cable 2	MXT	HK1	R06	N/A	N/A



3. RADIATED EMISSION

3.1. MEASUREMENT PROCEDURE

1. The EUT was placed on the top of the turntable 0.8 or 1.5 meter above ground. The phase center of the receiving antenna mounted on the top of a height-variable antenna tower was placed 3 meters far away from the turntable.
2. Power on the EUT and all the supporting units. The turntable was rotated by 360 degrees to determine the position of the highest radiation.
3. The height of the broadband receiving antenna was varied between one meter and four meters above ground to find the maximum emissions field strength of both horizontal and vertical polarization.
4. For each suspected emissions, the antenna tower was scan (from 1 M to 4 M) and then the turntable was rotated (from 0 degree to 360 degrees) to find the maximum reading.
5. Set the test-receiver system to Peak or CISPR quasi-peak Detect Function with specified bandwidth under Maximum Hold Mode.
6. For emissions above 1GHz, use 1MHz VBW and RBW for peak reading. Then 1MHz RBW and 10Hz VBW for average reading in spectrum analyzer. Place the measurement antenna away from each area of the EUT determined to be a source of emissions at the specified measurement distance, while keeping the measurement antenna aimed at the source of emissions at each frequency of significant emissions, with polarization oriented for maximum response. The measurement antenna may have to be higher or lower than the EUT, depending on the radiation pattern of the emission and staying aimed at the emission source for receiving the maximum signal. The final measurement antenna elevation shall be that which maximizes the emissions. The measurement antenna elevation for maximum emissions shall be restricted to a range of heights of from 1 m to 4 m above the ground or reference ground plane.
7. When the radiated emissions limits are expressed in terms of the average value of the emissions, and pulsed operation is employed, the measurement field strength shall be determined by averaging over one complete pulse train, including blanking intervals, as long as the pulse train does not exceed 0.1 seconds. As an alternative (provided the transmitter operates for longer than 0.1 seconds) or in cases where the pulse train exceeds 0.1 seconds, the measured field strength shall be determined from the average absolute voltage during a 0.1 second interval during which the field strength is at its maximum values.
8. If the emissions level of the EUT in peak mode was 3 dB lower than the average limit specified, then testing will be stopped and peak values of EUT will be reported, otherwise, the emissions which do not have 3 dB margin will be repeated one by one using the quasi-peak method for below 1GHz.
9. For testing above 1GHz, the emissions level of the EUT in peak mode was lower than average limit (that means the emissions level in peak mode also complies with the limit in average mode), then testing will be stopped and peak values of EUT will be reported, otherwise, the emissions will be measured in average mode again and reported.
10. In case the emission is lower than 30MHz, loop antenna has to be used for measurement and the recorded data should be QP measured by receiver. High - Low scan is not required in this case.



The following table is the setting of spectrum analyzer and receiver.

Spectrum Parameter	Setting
Start ~Stop Frequency	9KHz~150KHz/RBW 200Hz for QP
Start ~Stop Frequency	150KHz~30MHz/RBW 9KHz for QP
Start ~Stop Frequency	30MHz~1000MHz/RBW 120KHz for QP
Start ~Stop Frequency	1GHz~26.5GHz 1.5MHz/5MHz for Peak, 1.5MHz/10Hz for Average

Receiver Parameter	Setting
Start ~Stop Frequency	9KHz~150KHz/RBW 200Hz for QP
Start ~Stop Frequency	150KHz~30MHz/RBW 9KHz for QP
Start ~Stop Frequency	30MHz~1000MHz/RBW 120KHz for QP

Test limit for Standard FCC15.249

Fundamental Frequency	Field Strength of Fundamental (millivolts/meter)	Field Strength of Harmonics (microvolts/meter)
900-928MHz	50	500
2400-2483.5MHz	50	500
5725-5875MHz	50	500
24.0-24.25GHz	250	2500

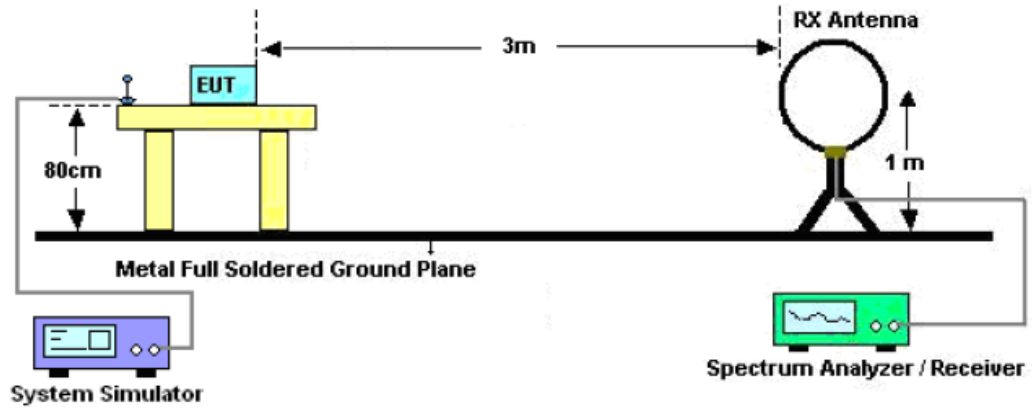
Test limit for Standard FCC 15.209

Frequency (MHz)	Distance Meters	Field Strengths Limit	
		μ V/m	dB(μV)/m
0.009 ~ 0.490	300	2400/F(kHz)	---
0.490 ~ 1.705	30	24000/F(kHz)	---
1.705 ~ 30	30	30	---
30 ~ 88	3	100	40.0
88 ~ 216	3	150	43.5
216 ~ 960	3	200	46.0
960 ~ 1000	3	500	54.0
Above 1000	3	Other:74.0 dB(μV)/m (Peak) 54.0 dB(μV)/m (Average)	

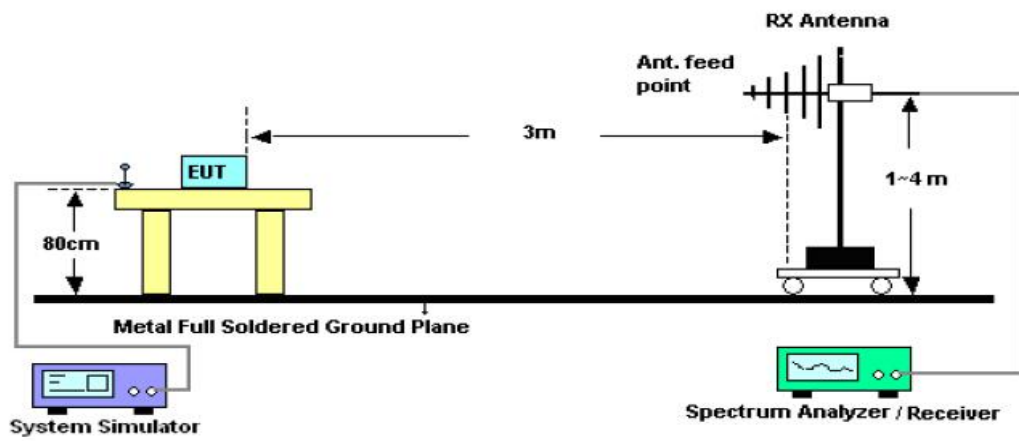
Remark: (1) Emission level $\text{dB}\mu\text{V} = 20 \log \text{Emission level } \mu\text{V/m}$
 (2) The smaller limit shall apply at the cross point between two frequency bands.
 (3) Distance is the distance in meters between the measuring instrument, antenna and the closest point of any part of the device or system.

3.2. TEST SETUP

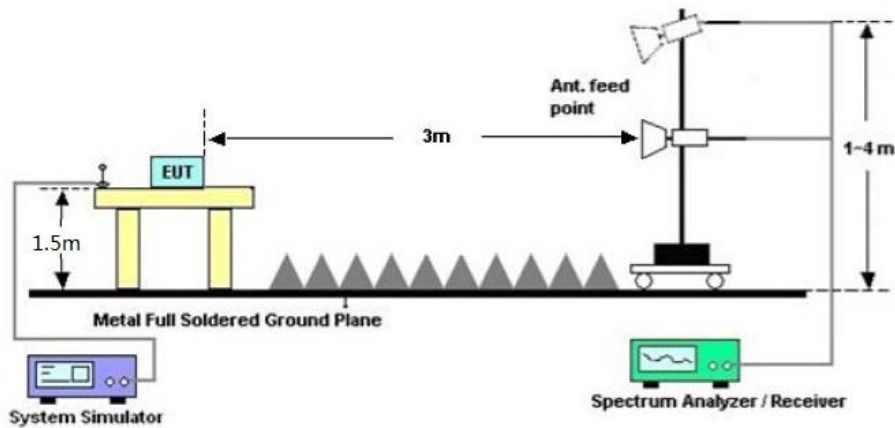
Radiated Emission Test-Setup Frequency Below 30MHz



RADIATED EMISSION TEST SETUP 30MHz-1000MHz



RADIATED EMISSION TEST SETUP ABOVE 1000MHz





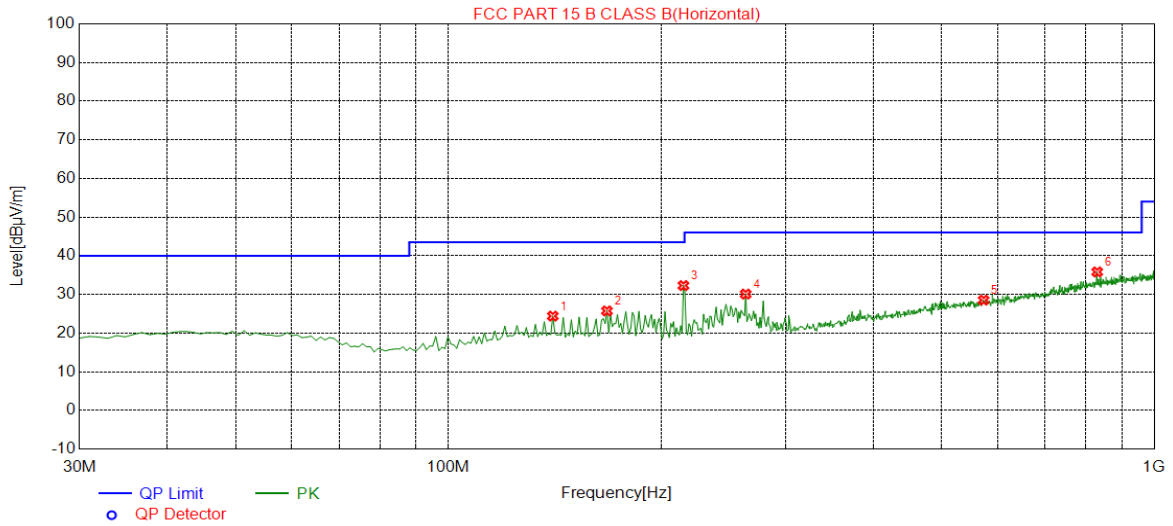
3.3. TEST RESULT

RADIATED EMISSION BELOW 30MHZ

No emission found between lowest internal used/generated frequencies to 30MHz.

RADIATED EMISSION 30MHz- 1GHZ FOR BR

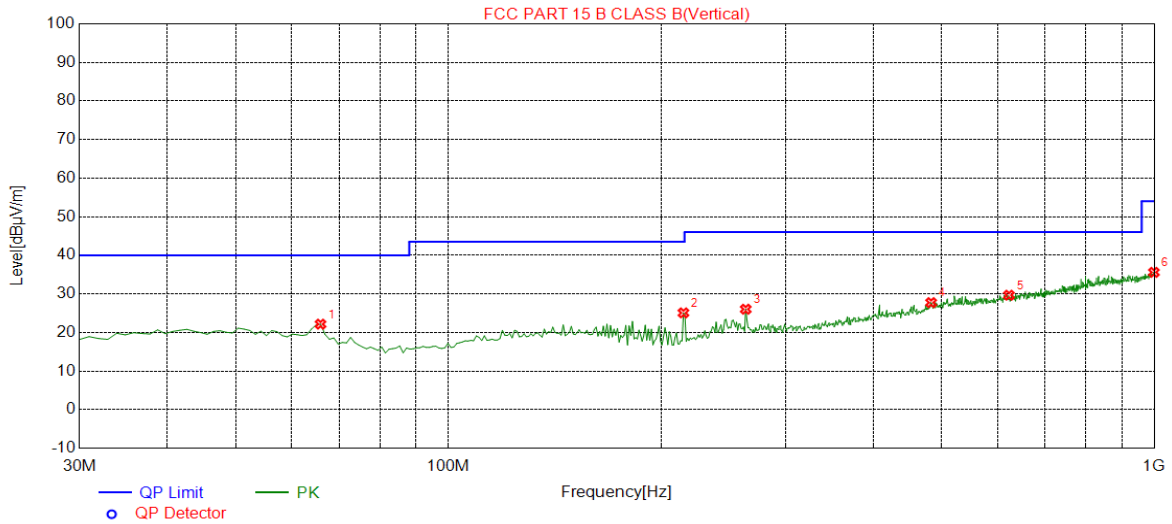
EUT :	Bluetooth Mouse	Model Name. :	GMAERGBT15
Temperature :	20 °C	Relative Humidity :	48%
Pressure :	1010 hPa	Test Voltage :	DC 3V
Test Mode :	Mode 1	Polarization :	Horizontal



Suspected Data List								
NO.	Freq. [MHz]	Level [dBµV/m]	Factor [dB]	Limit [dBµV/m]	Margin [dB]	Height [cm]	Angle [°]	Polarity
1	140.580	24.39	14.24	43.50	19.11	200	78	Horizontal
2	167.740	25.73	13.49	43.50	17.77	150	78	Horizontal
3	215.270	32.29	12.21	43.50	11.21	100	78	Horizontal
4	263.770	30.09	14.00	46.00	15.91	100	94	Horizontal
5	573.200	28.52	22.38	46.00	17.48	100	175	Horizontal
6	830.250	35.82	27.25	46.00	10.18	150	5	Horizontal



EUT :	Bluetooth Mouse	Model Name. :	GMAERGBT15
Temperature :	20 °C	Relative Humidity :	48%
Pressure :	1010 hPa	Test Voltage :	DC 3V
Test Mode :	Mode 1	Polarization :	Vertical



Suspected Data List								
NO.	Freq. [MHz]	Level [dBµV/m]	Factor [dB]	Limit [dBµV/m]	Margin [dB]	Height [cm]	Angle [°]	Polarity
1	65.8900	22.15	12.54	40.00	17.85	100	352	Vertical
2	215.270	25.07	12.21	43.50	18.43	150	60	Vertical
3	263.770	26.02	14.00	46.00	19.98	200	54	Vertical
4	482.990	27.73	20.53	46.00	18.27	100	108	Vertical
5	622.670	29.65	23.27	46.00	16.35	200	174	Vertical
6	999.030	35.58	29.21	54.00	18.42	200	357	Vertical

RESULT: PASS

Note:

Factor=Antenna Factor + Cable loss, Margin=Result-Limit.

The “Factor” value can be calculated automatically by software of measurement system.

The mode 1 is the worst case, and only the data of the worst case recorded in this test report.

**FIELD STRENGTH OF FUNDAMENTAL FOR BR**

EUT :	Bluetooth Mouse	Model Name. :	GMAERGBT15
Temperature :	20 °C	Relative Humidity :	48%
Pressure :	1010 hPa	Test Voltage :	DC 3V
Test Modulation :	GFSK	Polarization :	Horizontal

Frequency (MHz)	Meter Reading (dBμV)	Factor (dB)	Emission Level (dBμV/m)	Limits (dBμV/m)	Margin (dB)	Value Type
2402.021	75.90	13.46	89.36	114.00	-24.64	peak
2402.021	67.99	13.46	81.45	94.00	-12.55	AVG
2441.021	74.85	13.88	88.73	114.00	-25.27	peak
2441.021	66.86	13.88	80.74	94.00	-13.26	AVG
2480.021	73.91	14.11	88.02	114.00	-25.98	peak
2480.021	65.92	14.11	80.03	94.00	-13.97	AVG

Remark:

Factor = Antenna Factor + Cable Loss – Pre-amplifier.

EUT :	Bluetooth Mouse	Model Name. :	GMAERGBT15
Temperature :	20 °C	Relative Humidity :	48%
Pressure :	1010 hPa	Test Voltage :	DC 3V
Test Modulation :	GFSK	Polarization :	Vertical

Frequency (MHz)	Meter Reading (dBμV)	Factor (dB)	Emission Level (dBμV/m)	Limits (dBμV/m)	Margin (dB)	Value Type
2402.021	75.48	13.46	88.94	114.00	-25.06	peak
2402.021	67.42	13.46	80.88	94.00	-13.12	AVG
2441.021	74.43	13.88	88.31	114.00	-25.69	peak
2441.021	66.41	13.88	80.29	94.00	-13.71	AVG
2480.021	73.44	14.11	87.55	114.00	-26.45	peak
2480.021	65.46	14.11	79.57	94.00	-14.43	AVG

Remark:

Factor = Antenna Factor + Cable Loss – Pre-amplifier.

**RADIATED EMISSION ABOVE 1GHZ FOR BR**

EUT :	Bluetooth Mouse	Model Name. :	GMAERGBT15
Temperature :	20 °C	Relative Humidity :	48%
Pressure :	1010 hPa	Test Voltage :	DC 3V
Test Mode :	Mode 1	Polarization :	Horizontal

Frequency	Meter Reading	Factor	Emission Level	Limits	Margin	Value Type
(MHz)	(dB μ V)	(dB)	(dB μ V/m)	(dB μ V/m)	(dB)	
4804.026	41.26	7.12	48.38	74	-25.62	peak
4804.026	38.45	7.12	45.57	54	-8.43	AVG
7206.039	36.23	9.84	46.07	74	-27.93	peak
7206.039	33.79	9.84	43.63	54	-10.37	AVG

Remark:

Factor = Antenna Factor + Cable Loss – Pre-amplifier.

EUT :	Bluetooth Mouse	Model Name. :	GMAERGBT15
Temperature :	20 °C	Relative Humidity :	48%
Pressure :	1010 hPa	Test Voltage :	DC 3V
Test Mode :	Mode 1	Polarization :	Vertical

Frequency	Meter Reading	Factor	Emission Level	Limits	Margin	Value Type
(MHz)	(dB μ V)	(dB)	(dB μ V/m)	(dB μ V/m)	(dB)	
4804.026	40.33	7.12	47.45	74	-26.55	peak
4804.026	38.71	7.12	45.83	54	-8.17	AVG
7206.039	36.24	9.84	46.08	74	-27.92	peak
7206.039	34.31	9.84	44.15	54	-9.85	AVG

Remark:

Factor = Antenna Factor + Cable Loss – Pre-amplifier.

Note: Other emissions from 8G to 25 GHz are considered as ambient noise. No recording in the test report.

Factor=Antenna Factor + Cable loss - Amplifier gain, Margin=Measurement-Limit.

The “Factor” value can be calculated automatically by software of measurement system.

The GFSK modulation was the worst case and only the data of worst recorded in this report.

4. BAND EDGE EMISSION

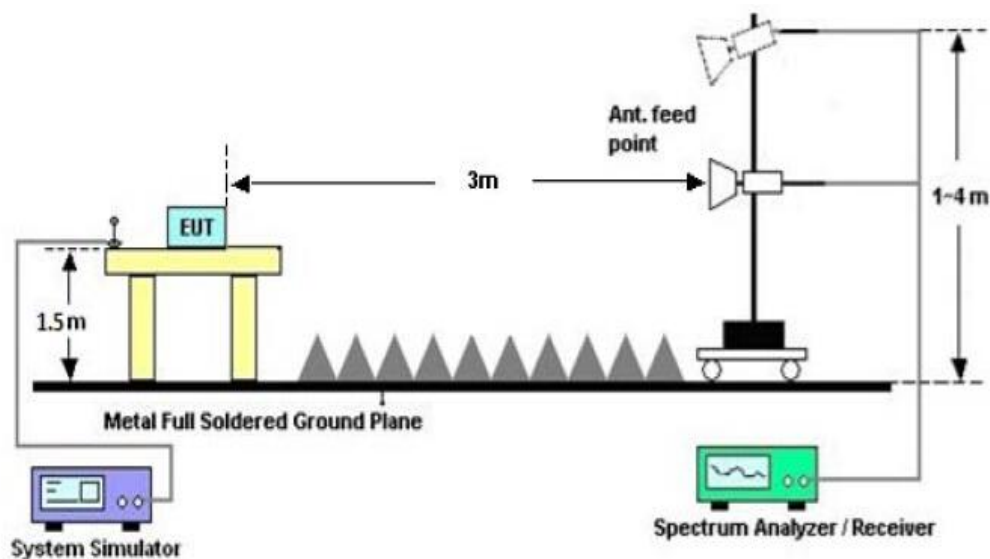
4.1. MEASUREMENT PROCEDURE

1. The EUT operates at hopping-off test mode. The lowest or highest channels are tested to verify the largest transmission and spurious emissions power at the continuous transmission mode.
2. Max hold the trace of the setup 1, and the EUT operates at hopping-on test mode to verify the largest spurious emissions power.
3. Set the spectrum analyzer in the following setting in order to capture the lower and upper band-edges of the emission.

Start frequency(MHz)	Stop frequency(MHz)
2200	2405
2478	2500

4.2 TEST SETUP

RADIATED EMISSION TEST SETUP



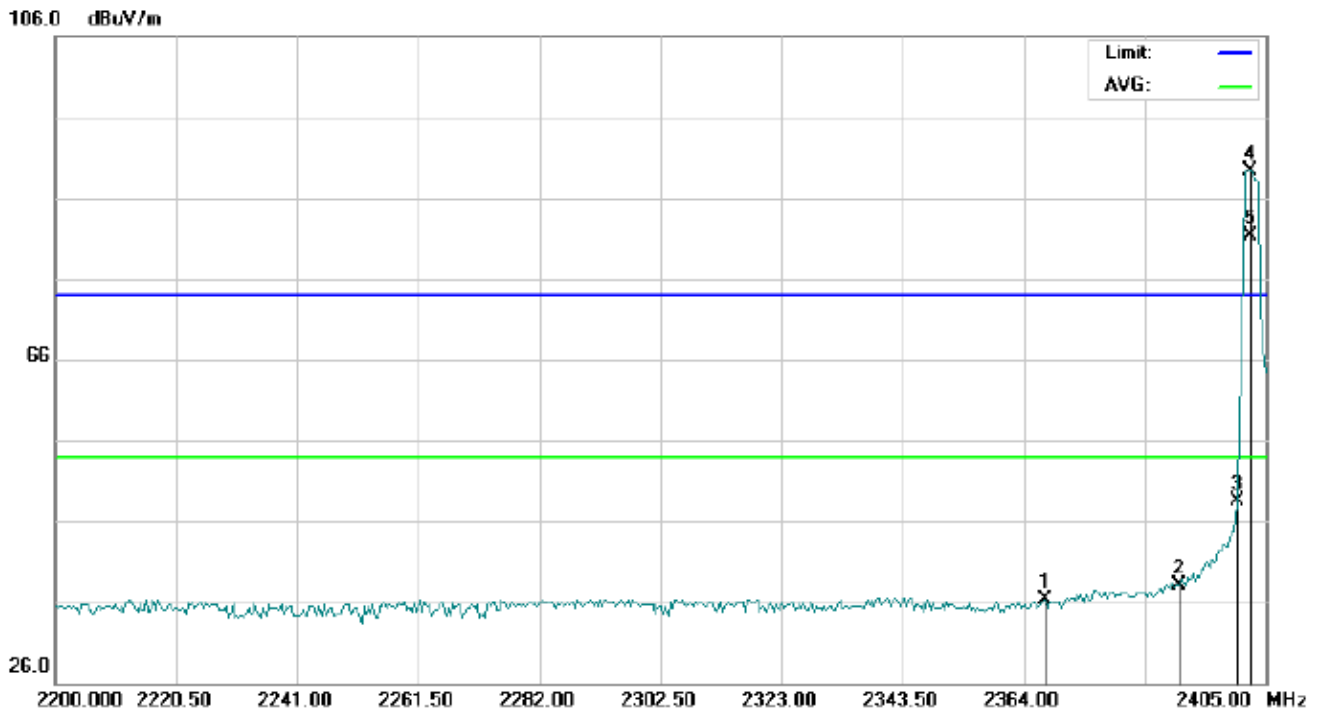


4.3 RADIATED TEST RESULT

FOR BR

(Worst modulation: GFSK)

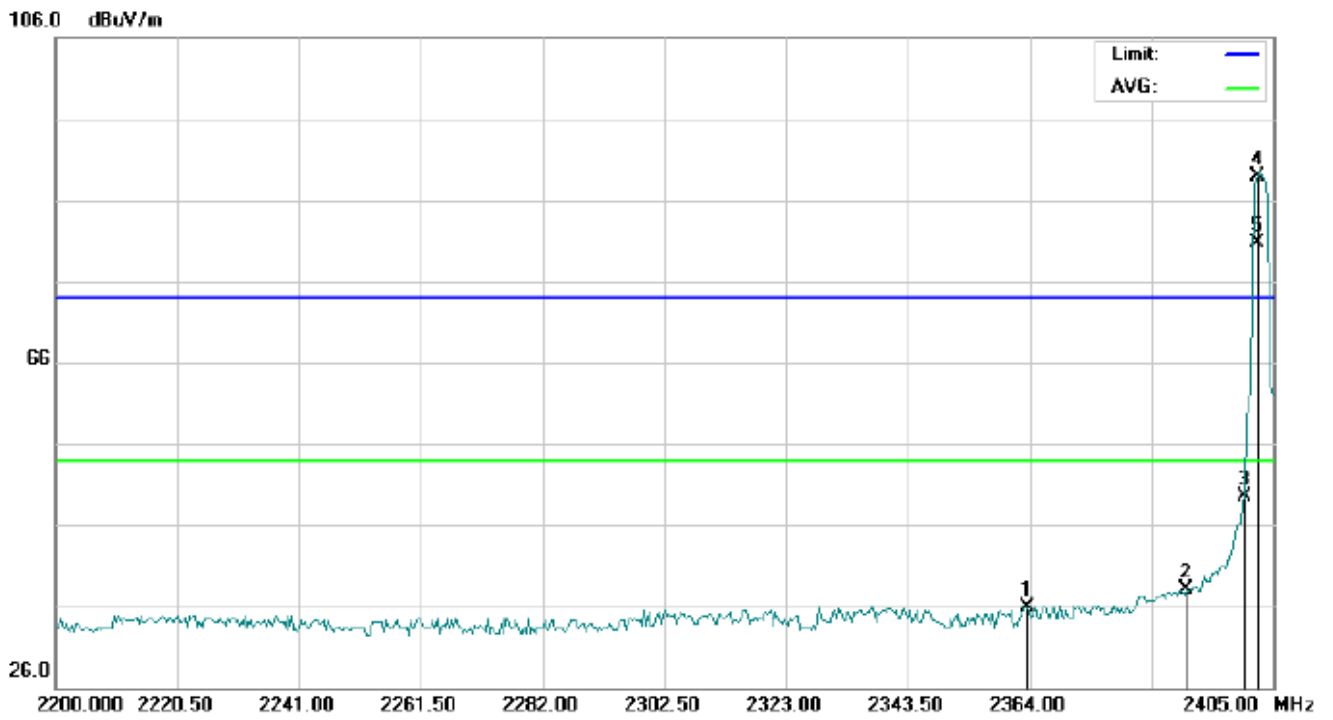
TEST PLOT OF BAND EDGE FOR LOW CHANNEL-Horizontal



No.	Mk	Freq.	Reading	Factor	Measurement	Limit	Over	Detector	Antenna	Table	Comment
		MHz	dBuV	dBuV/m	dBuV/m	dBuV/m	dB		Height	Degree	
									cm	degree	
1		2367.758	22.84	13.46	36.30	74.00	-37.70	peak			
2		2390.000	24.67	13.46	38.13	74.00	-35.87	peak			
3		2400.000	34.94	13.46	48.40	74.00	-25.60	peak			
4	X	2402.000	75.81	13.46	89.27	74.00	15.27	peak			
5	*	2402.000	67.86	13.46	81.32	54.00	27.32	AVG	100	141	



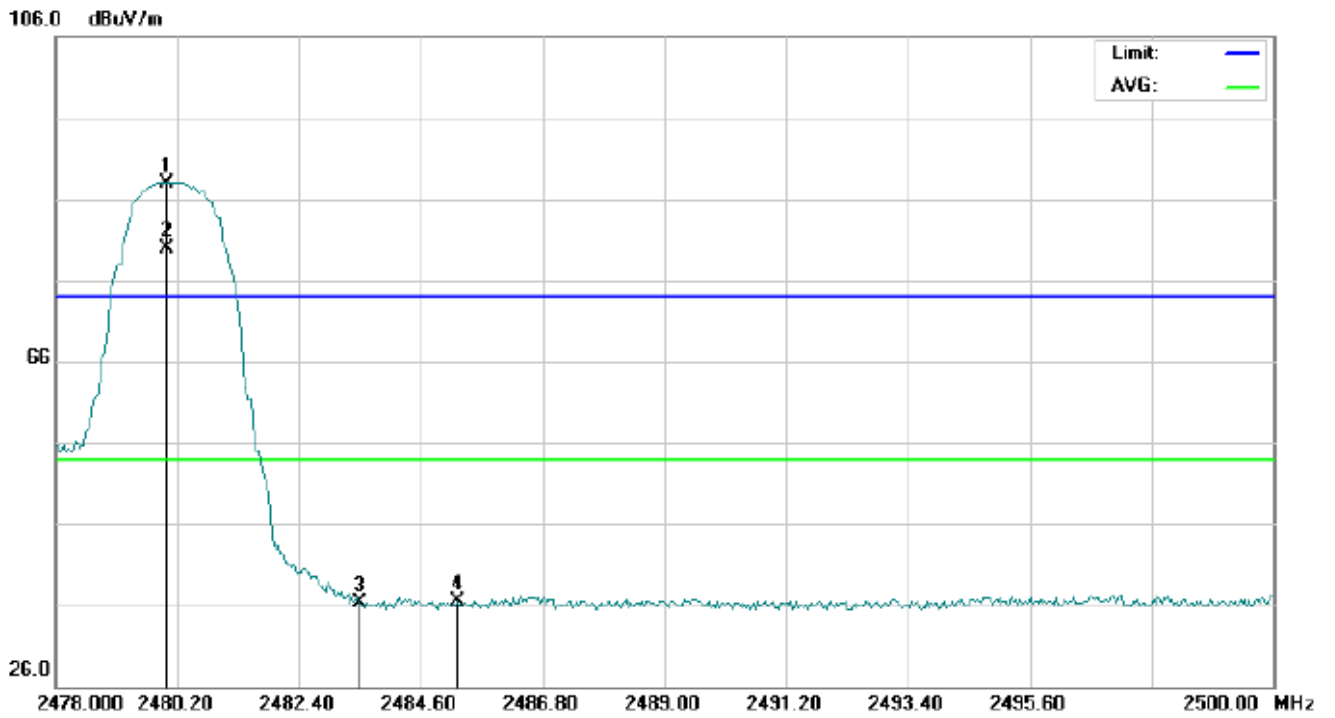
TEST PLOT OF BAND EDGE FOR LOW CHANNEL -Vertical



No.	Mk	Freq.	Reading	Factor	Measurement	Limit	Over	Detector	Antenna Height	Table Degree	Comment
		MHz	dBuV	dBuV/m	dBuV/m	dBuV/m	dB		cm	degree	
1		2363.317	22.46	13.46	35.92	74.00	-38.08	peak			
2		2390.000	24.67	13.46	38.13	74.00	-35.87	peak			
3		2400.000	35.94	13.46	49.40	74.00	-24.60	peak			
4	X	2402.000	75.41	13.46	88.87	74.00	14.87	peak			
5	*	2402.000	67.19	13.46	80.65	54.00	26.65	AVG	100	269	



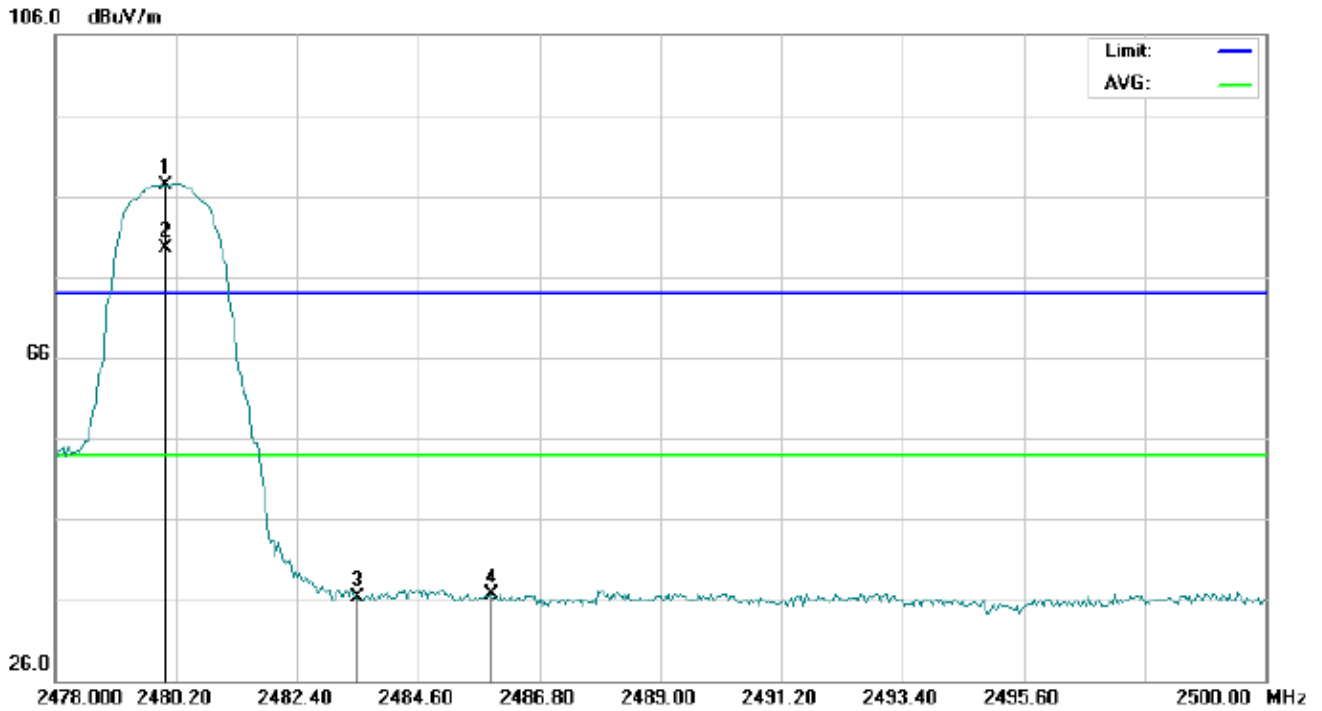
TEST PLOT OF BAND EDGE FOR HIGH CHANNEL -Horizontal



No.	Mk	Freq.	Reading	Factor	Measurement	Limit	Over	Detector	Antenna Height	Table Degree	Comment
		MHz	dBuV	dBuV/m	dBuV/m	dBuV/m	dB		cm	degree	
1	X	2480.000	73.78	14.11	87.89	74.00	13.89	peak			
2	*	2480.000	65.73	14.11	79.84	54.00	25.84	AVG	100	133	
3		2483.500	22.16	14.13	36.29	74.00	-37.71	peak			
4		2485.260	22.28	14.14	36.42	74.00	-37.58	peak			



TEST PLOT OF BAND EDGE FOR HIGH CHANNEL-Vertical



No.	Mk	Freq.	Reading	Factor	Measurement	Limit	Over	Detector	Antenna Height	Table Degree	Comment
		MHz	dBuV	dBuV/m	dBuV/m	dBuV/m	dB		cm	degree	
1	X	2480.000	73.28	14.11	87.39	74.00	13.39	peak			
2	*	2480.000	65.31	14.11	79.42	54.00	25.42	AVG	100	231	
3		2483.500	22.22	14.13	36.35	74.00	-37.65	peak			
4		2485.920	22.51	14.15	36.66	74.00	-37.34	peak			

RESULT: PASS

Note: Factor=Antenna Factor + Cable loss - Amplifier gain, Over=Measure-Limit.

The "Factor" value can be calculated automatically by software of measurement system.

Hopping on mode and Hopping off mode have been tested, but only worst case reported.

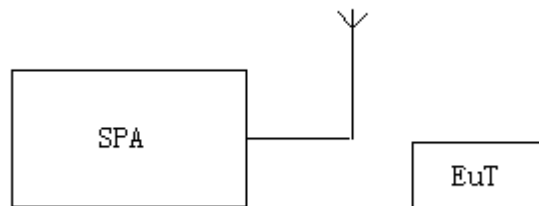


5. BANDWIDTH

5.1. MEASUREMENT PROCEDURE

1. The EUT was placed on the top of the turntable 1.5 meter above ground. The phase center of the receiving antenna mounted on the top of a height-variable antenna tower was placed 3 meters far away from the turntable.
2. Set the EUT Work on the operation frequency individually.
3. Set Span = approximately 2 to 5 times the OBW, centered on a hopping channel
The nominal IF filter bandwidth (3 dB RBW) shall be in the range of 1% to 5% of the OBW and video bandwidth (VBW) shall be approximately 3* RBW; Sweep = auto; Detector function = peak
4. Set SPA Trace 1 Max hold, then View.

5.2. TEST SETUP





5.3. TEST RESULT

TEST ITEM	20DB BANDWIDTH
TEST MODULATION	GFSK for BR

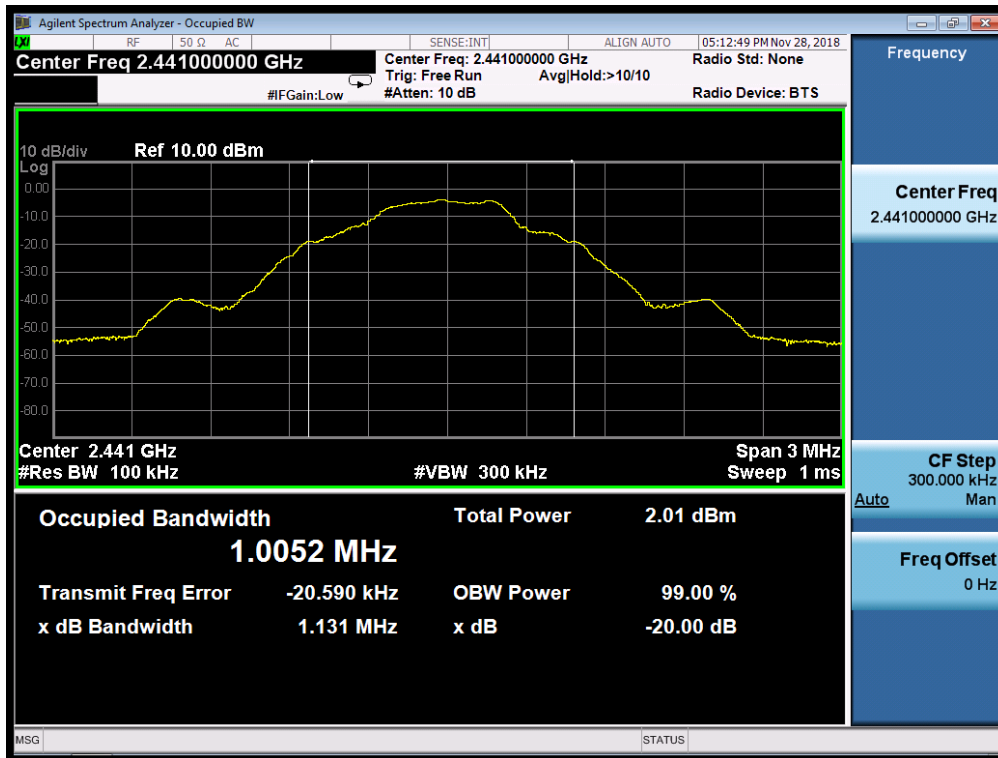
Test Data (MHz)		Criteria
Low Channel	1.140	PASS
Middle Channel	1.131	PASS
High Channel	1.131	PASS

TEST PLOT OF BANDWIDTH FOR LOW CHANNEL

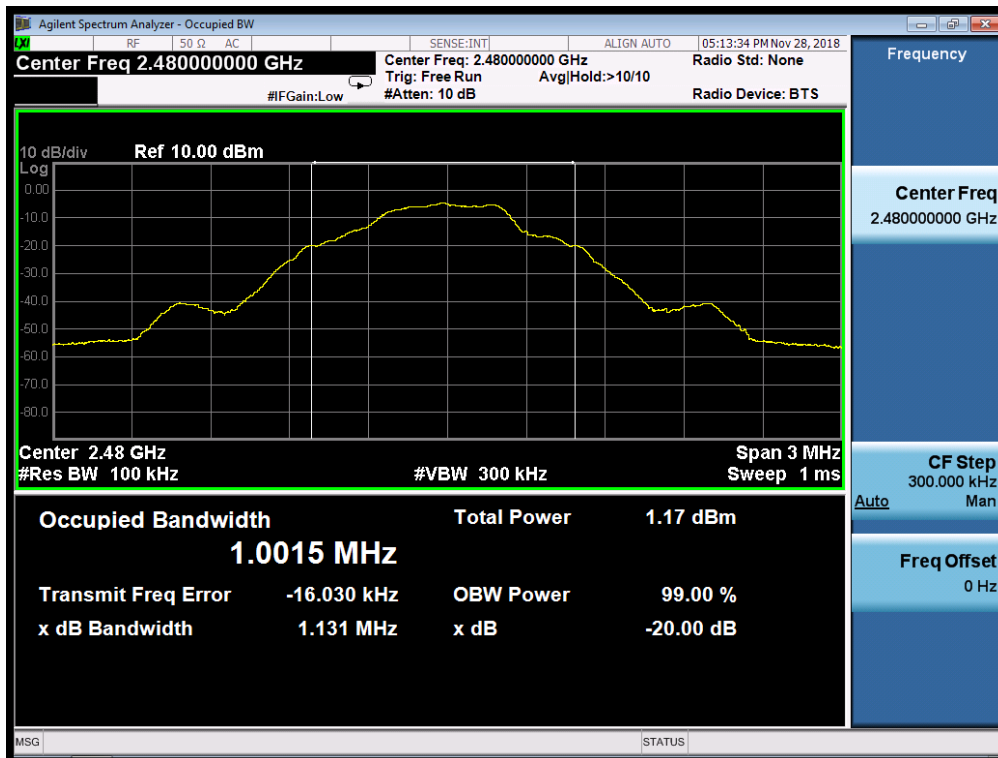




TEST PLOT OF BANDWIDTH FOR MIDDLE CHANNEL



TEST PLOT OF BANDWIDTH FOR HIGH CHANNEL



6. FCC LINE CONDUCTED EMISSION TEST

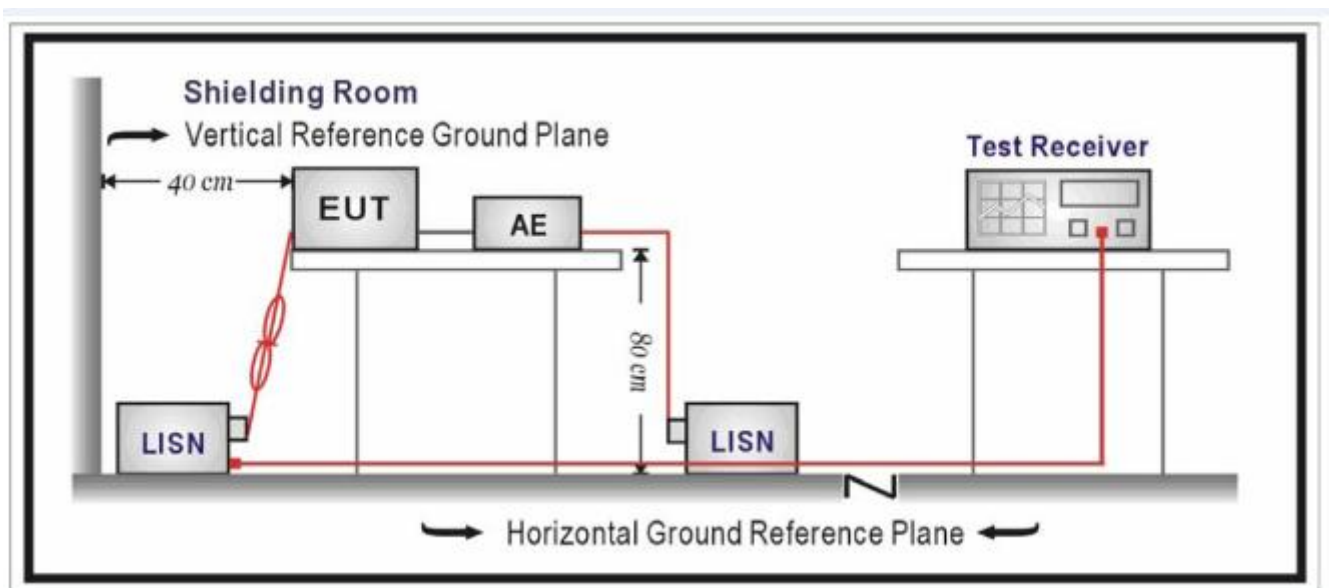
6.1. LIMITS OF LINE CONDUCTED EMISSION TEST

Frequency	Maximum RF Line Voltage	
	Q.P.(dBuV)	Average(dBuV)
150kHz~500kHz	66-56	56-46
500kHz~5MHz	56	46
5MHz~30MHz	60	50

Note:

1. The lower limit shall apply at the transition frequency.
2. The limit decreases linearly with the logarithm of the frequency in the range 0.15 MHz to 0.50 MHz.

6.2. BLOCK DIAGRAM OF LINE CONDUCTED EMISSION TEST





6.3. PRELIMINARY PROCEDURE OF LINE CONDUCTED EMISSION TEST

1. The equipment was set up as per the test configuration to simulate typical actual usage per the user's manual. When the EUT is a tabletop system, a wooden table with a height of 0.8 meters is used and is placed on the ground plane as per ANSI C63.10 (see Test Facility for the dimensions of the ground plane used). When the EUT is a floor-standing equipment, it is placed on the ground plane which has a 3-12 mm non-conductive covering to insulate the EUT from the ground plane.
2. Support equipment, if needed, was placed as per ANSI C63.10.
3. All I/O cables were positioned to simulate typical actual usage as per ANSI C63.10.
4. All support equipments received DC 3V/60Hz power from a LISN, if any.
5. The EUT received DC 5V power from adapter which received DC 3V/60Hz power from a LISN.
6. The test program was started. Emissions were measured on each current carrying line of the EUT using a spectrum Analyzer / Receiver connected to the LISN powering the EUT. The LISN has two monitoring points: Line 1 (Hot Side) and Line 2 (Neutral Side). Two scans were taken: one with Line 1 connected to Analyzer / Receiver and Line 2 connected to a 50 ohm load; the second scan had Line 1 connected to a 50 ohm load and Line 2 connected to the Analyzer / Receiver.
7. Analyzer / Receiver scanned from 150 kHz to 30MHz for emissions in each of the test modes.
8. During the above scans, the emissions were maximized by cable manipulation.
9. The test mode(s) were scanned during the preliminary test.

Then, the EUT configuration and cable configuration of the above highest emission level were recorded for reference of final testing.

6.4. FINAL PROCEDURE OF LINE CONDUCTED EMISSION TEST

1. EUT and support equipment was set up on the test bench as per step 2 of the preliminary test.
2. A scan was taken on both power lines, Line 1 and Line 2, recording at least the six highest emissions. Emission frequency and amplitude were recorded into a computer in which correction factors were used to calculate the emission level and compare reading to the applicable limit. If EUT emission level was less -2dB to the A.V. limit in Peak mode, then the emission signal was re-checked using Q.P and Average detector.
3. The test data of the worst case condition(s) was reported on the Summary Data page.

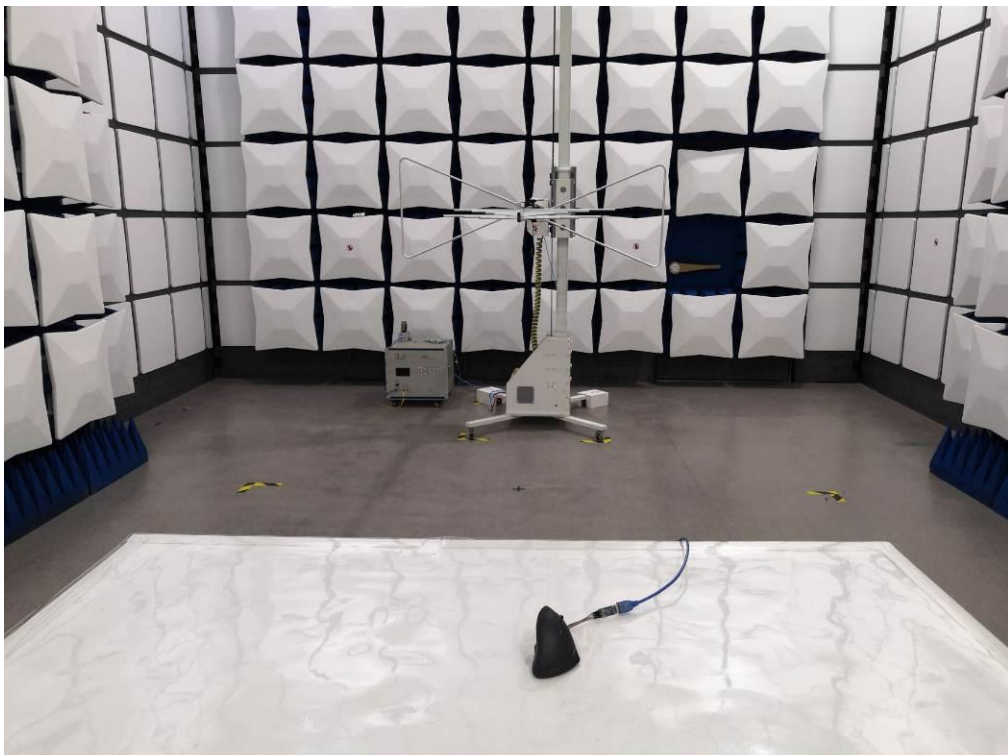
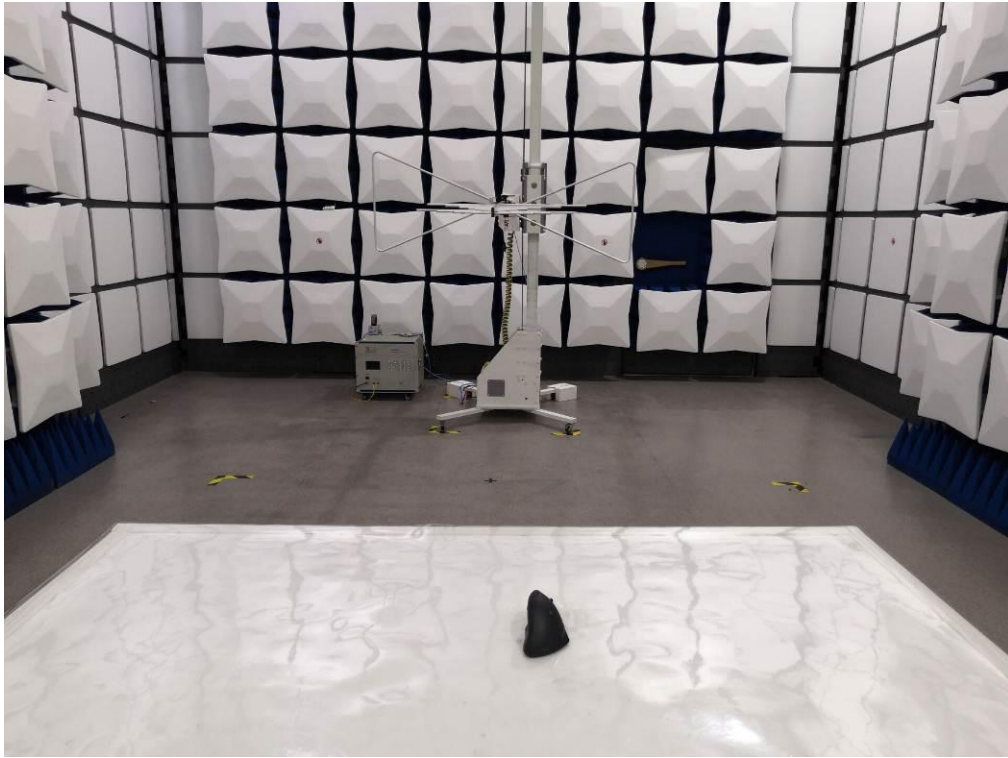
6.5. TEST RESULT OF LINE CONDUCTED EMISSION TEST

N/A

Note: The EUT is power supplied by AAA battery.

APPENDIX A: PHOTOGRAPHS OF TEST SETUP

FCC RADIATED EMISSION TEST SETUP





APPENDIX B: PHOTOGRAPHS OF EUT

TOP VIEW OF EUT



BOTTOM VIEW OF EUT





FRONT VIEW OF EUT



BACK VIEW OF EUT



LEFT VIEW OF EUT



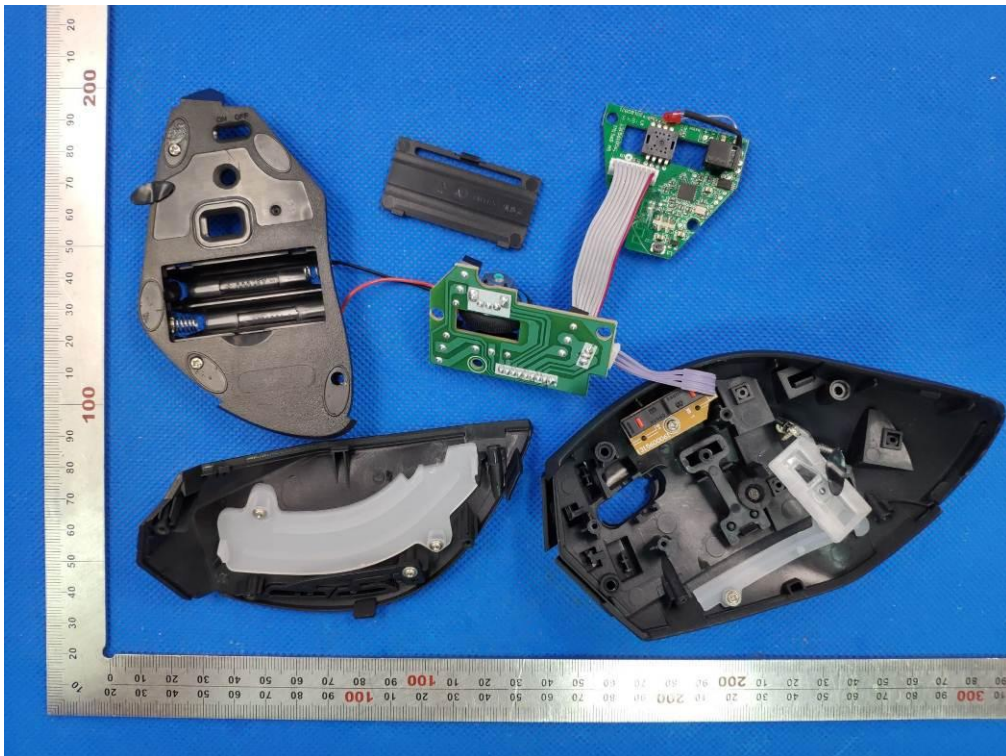
RIGHT VIEW OF EUT



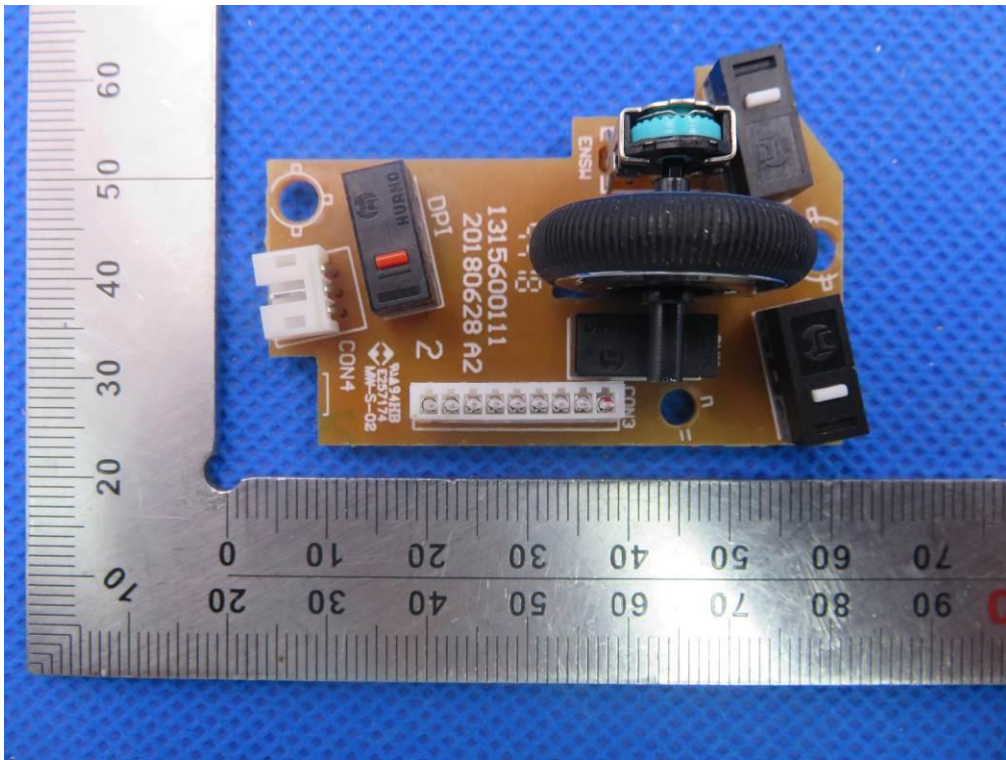
VIEW OF EUT (Port)



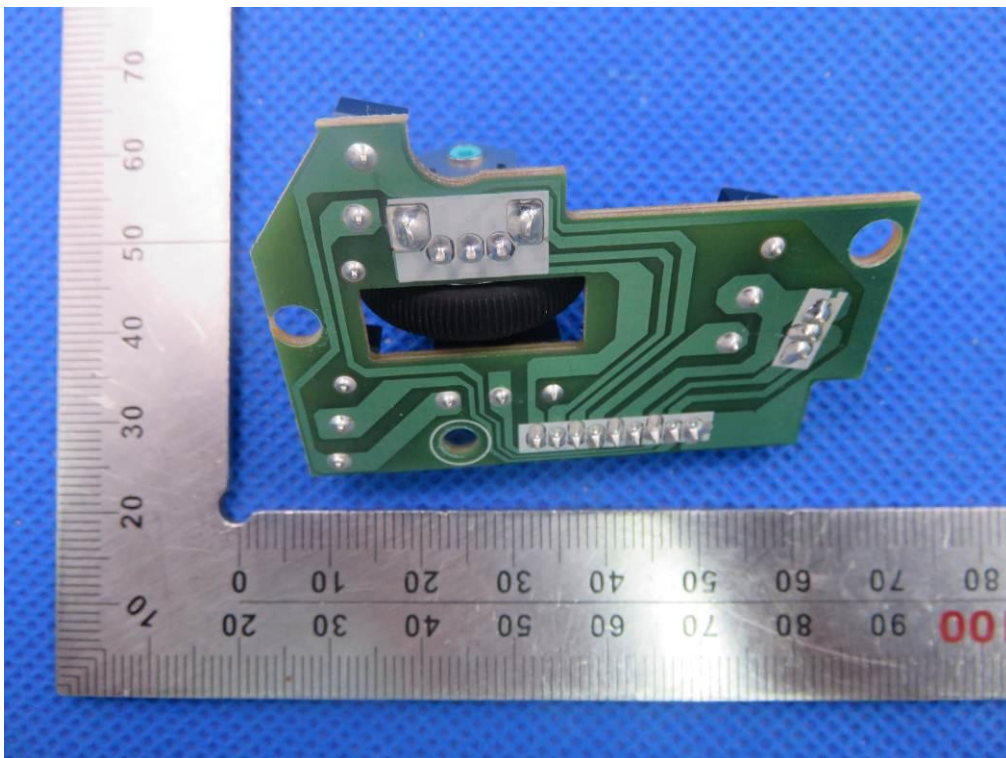
OPEN VIEW OF EUT



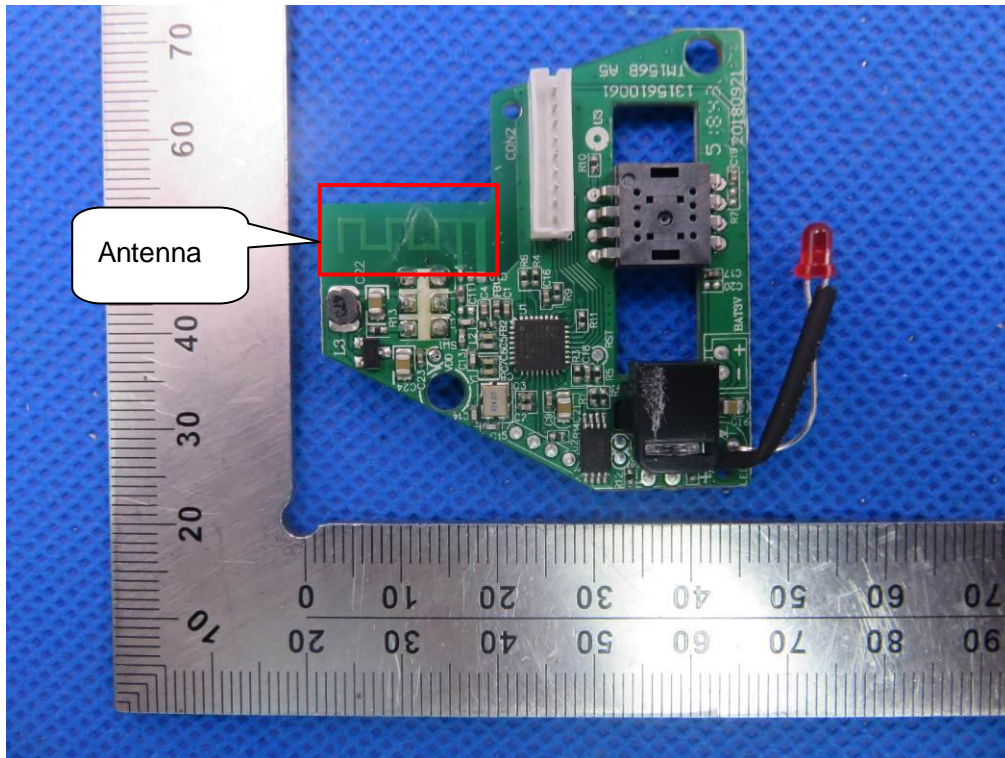
INTERNAL VIEW OF EUT-1



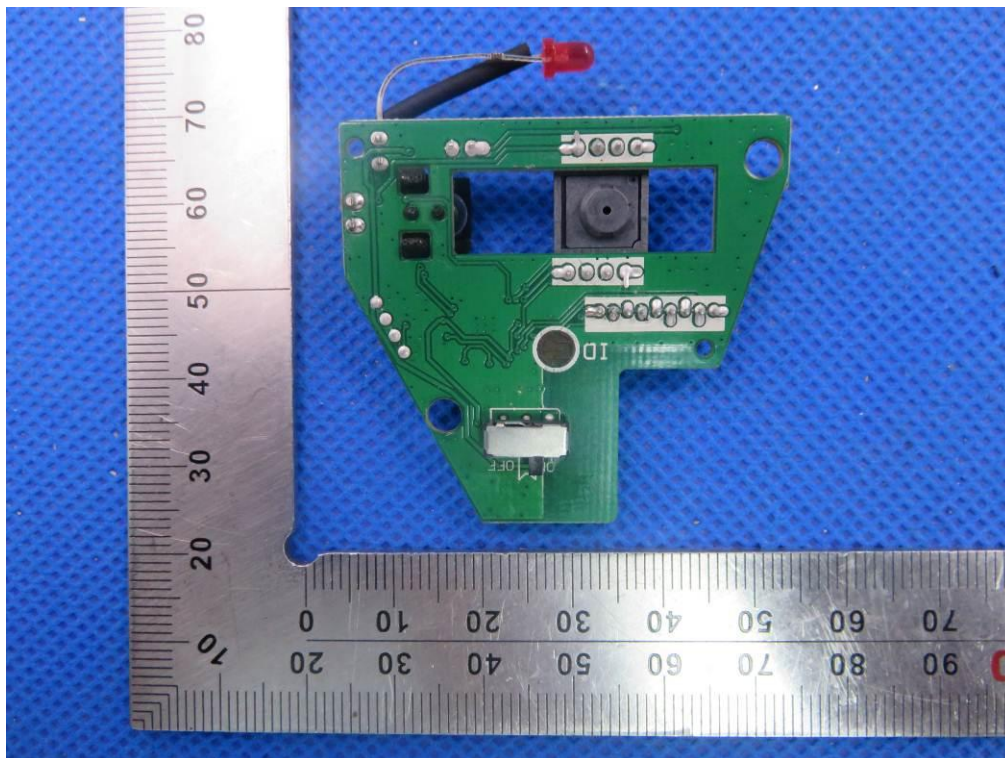
INTERNAL VIEW OF EUT-2



INTERNAL VIEW OF EUT-3

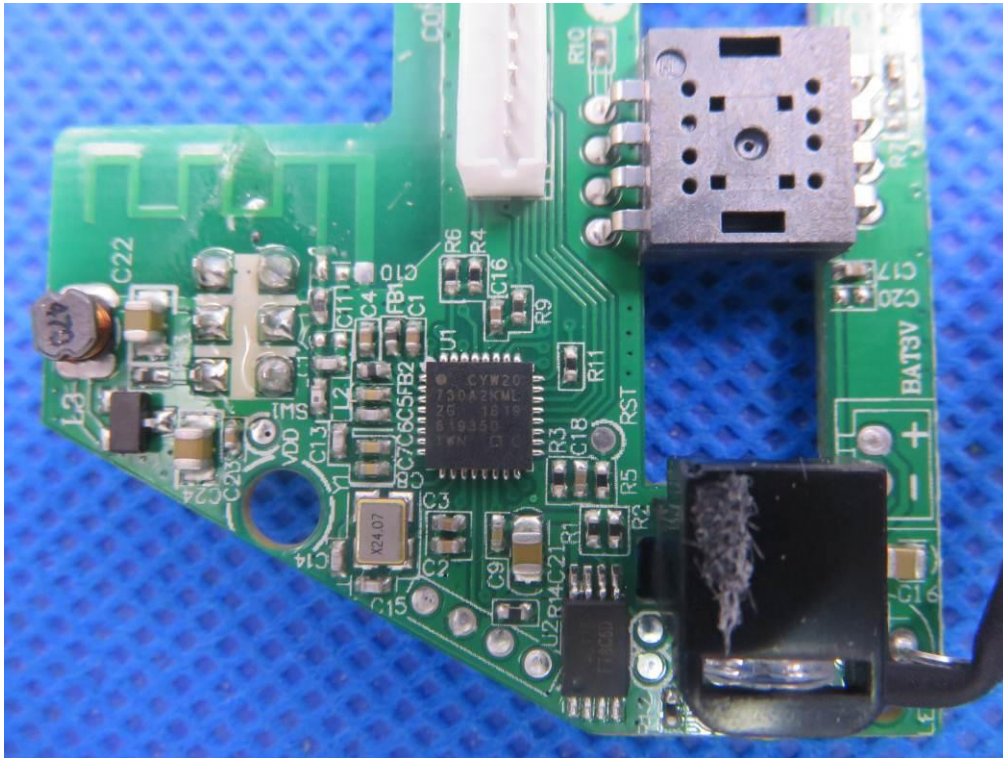


INTERNAL VIEW OF EUT-4





INTERNAL VIEW OF EUT-5



----END OF REPORT----