

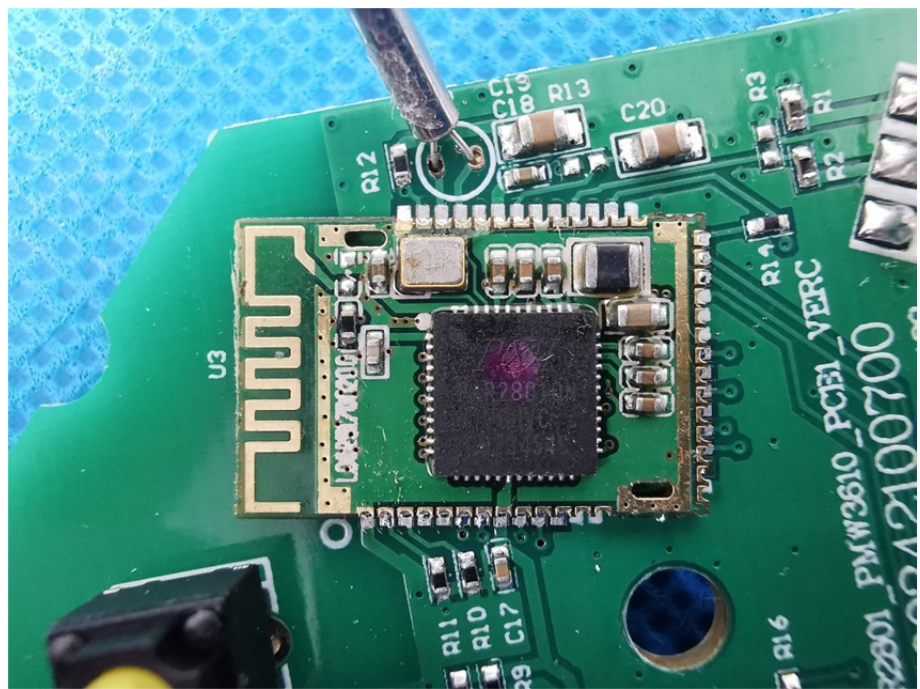
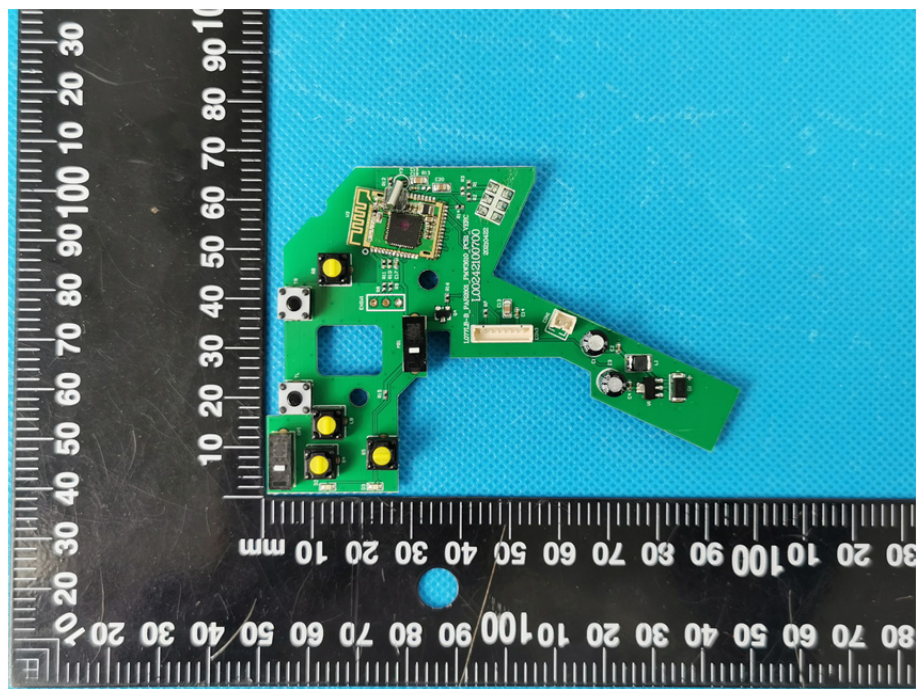


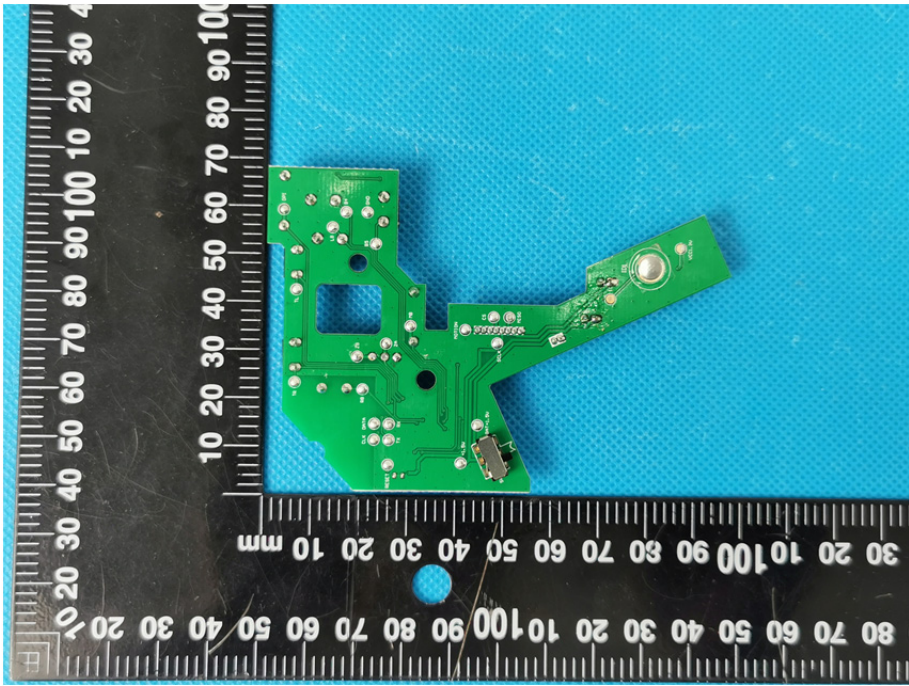
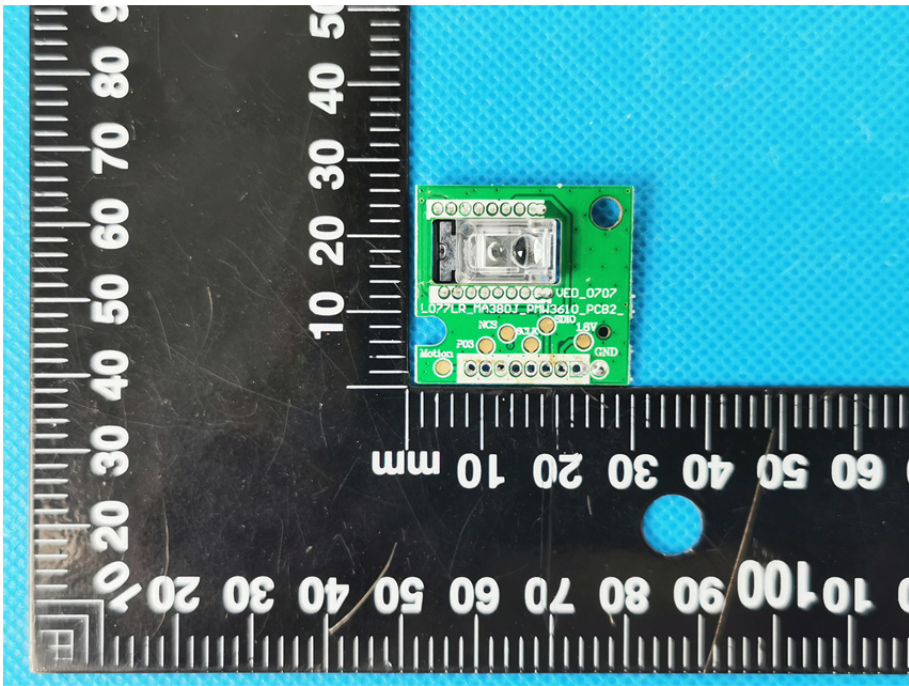
### EXHIBIT 3 - EUT INTERNAL PHOTOGRAPHS

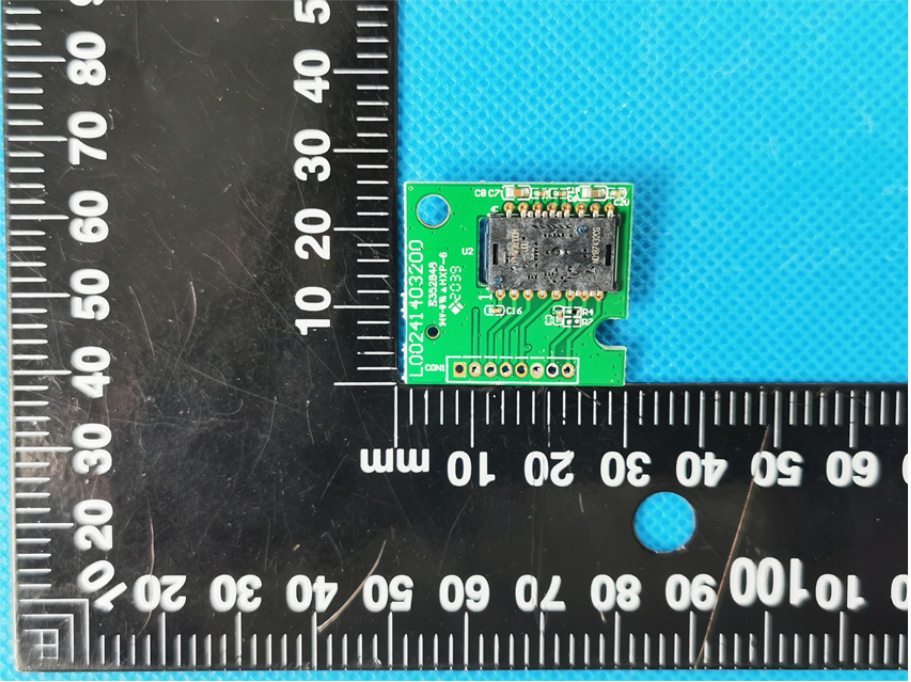
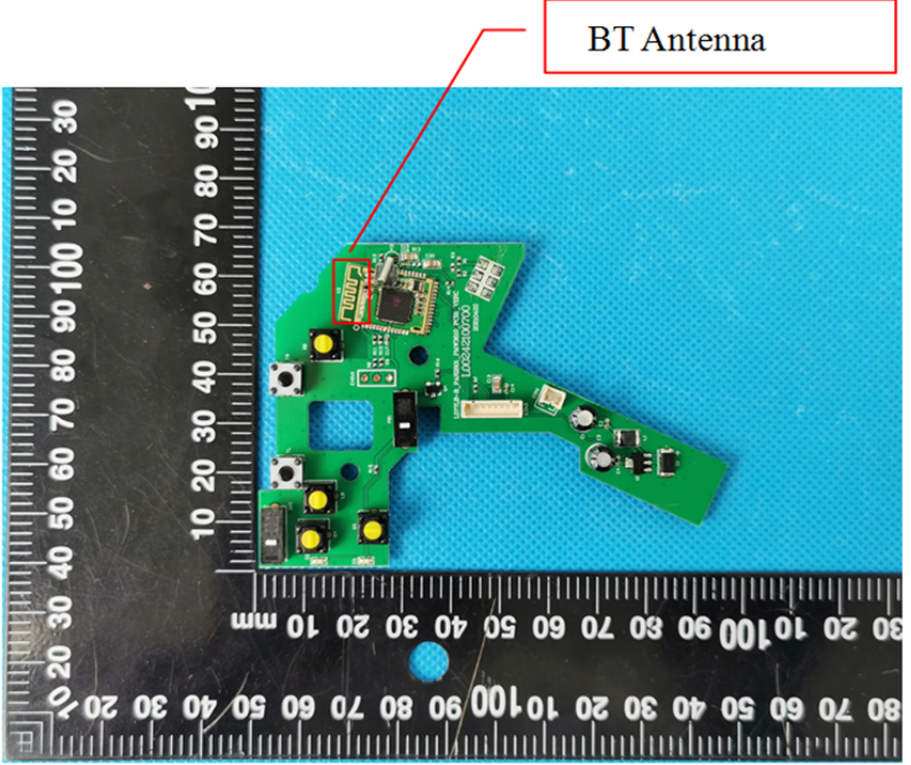
<p><b>EUT Housing and Board View 1</b></p>	 A photograph showing the external components of the EUT. On the left is a black plastic housing with a battery compartment and a red button. To its right is a small black rectangular component. A black ruler with white markings is placed below the items for scale. The ruler shows measurements in millimeters and centimeters.
<p><b>EUT Housing and Board View 2</b></p>	 A photograph showing the internal components of the EUT. The black plastic housing is open, revealing a green printed circuit board (PCB) with various electronic components, a battery, and a red button. A black ruler with white markings is placed below the items for scale. The ruler shows measurements in millimeters and centimeters.

Solder  
Board-Component View  
1





<p style="text-align: center;"><b>Solder Board-Component View 2</b></p>	 A photograph of a green printed circuit board (PCB) component, labeled 'Solder Board-Component View 2'. The component is irregularly shaped with several circular holes and a central rectangular cutout. It is populated with numerous small surface-mount components, including resistors and capacitors. A large circular solder pad is visible on the right side. The component is placed on a blue textured surface next to a black ruler with white markings in millimeters. The ruler shows measurements from 0 to 100 mm.
<p style="text-align: center;"><b>Solder Board-Component View 3</b></p>	 A photograph of a smaller green PCB component, labeled 'Solder Board-Component View 3'. This component features a central square component, possibly a microcontroller or sensor, with a clear protective cover. It has several pins and pads along its edges, including a header with multiple pins. Text on the board includes 'VED_0707', 'L077LR_MA380J_PWM3610_PCB2', 'NCS', '1.5V', 'GND', and 'Motion'. The component is placed on a blue textured surface next to a black ruler with white markings in millimeters. The ruler shows measurements from 0 to 100 mm.

<p style="text-align: center;"><b>Solder Board-Component View</b> 4</p>	 <p>A photograph showing a small green PCB component with a silver chip and various surface components. The component is placed on a black ruler with white markings for scale. The ruler shows measurements in millimeters, with the component positioned between the 10mm and 50mm marks. The component has a blue circular mark on the left side and a white label with the number '100241403200' and other markings.</p>
<p style="text-align: center;"><b>Antenna View</b></p>	 <p>A photograph showing a larger green PCB component with various components, including a silver chip and several yellow components. The component is placed on a black ruler with white markings for scale. The ruler shows measurements in millimeters, with the component positioned between the 10mm and 100mm marks. A red box highlights a specific component on the board, and a red line points from a label 'BT Antenna' to this component. The component has a white label with the number '100241403200' and other markings.</p>