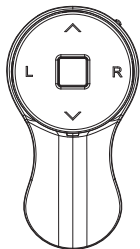


尺寸: 70*100MM, 材質: 100克雙膠紙, 正反兩面黑白印刷

User Guide



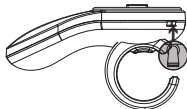
Product designation: RING BULETOOTH MOUSE
BRAND: SANWA
Model name:GMABT156BK
Manufacturer: Dongguan Shanggui Electronics Co., Ltd.
Address: No.7, 7th Str. YinCheng Rd., Xiabian Village, Chang'an Town,
Dongguan City, Guangdong, China
For your personal enjoyment, we recommend that you read this manual
thoroughlybefore using this product and keep this manual handy for reference
if needed.

Main Specifications

- . Buttons: 5
- . Material: ABS
- . Size: 32.92*60.4*35.6mm;
- . Weight: 17g;
- . Key action: 75±5gf;
- . Operation distance: 6-10 meters
- . Independent power on/off switch
- . Low power indicator
- . Service voltage: 4.2V;
- . Working current: <8mA;

Setup and Use

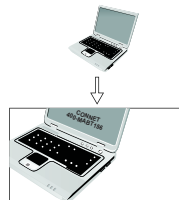
1. Put the power switch on the "ON" position



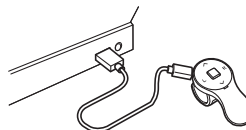
2. Long press the left button to connect Bluetooth



3. Bluetooth matching name appears on the computer, click to pair



4. When the mouse runs out of power, turn on the mouse and charge it with the supplied USB cable



Package Contents:

- . 1PC RING BULETOOTH MOUSE
- . 1PC Cable
- . 1PC User Manual

System

Windows/XP /Vista/Win7/8/10 and Mac operating system

Tips and Notes

- . Don't use it on the reflecting and uneven surfaces which will effect the mouse function.
- . Don't put the nano receiver to stay with any bluetooth receivers together
- . Don't open and repair the mouse and receiver by yourself
- . Pls take the dry and soft cotton fabrics to clean the mouse
- . Remember to throw away the old batteries to the waste battery recycle bin.

NOTE: This equipment has been tested and found to comply with the limits for a Class B digital device, pursuant to part 15 of the FCC Rules. These limits are designed to provide reasonable protection against harmful interference in a residential installation. This equipment generates uses and can radiate radio frequency energy and, if not installed and used in accordance with the instructions, may cause harmful interference to radio communications. However, there is no guarantee that interference will not occur in a particular installation. If this equipment does cause harmful interference to radio or television reception, which can be determined by turning the equipment off and on, the user is encouraged to try to correct the interference by one or more of the following measures:

- Reorient or relocate the receiving antenna.
- Increase the separation between the equipment and receiver.
- Connect the equipment into an outlet on a circuit different from that to which the receiver is connected.
- Consult the dealer or an experienced radio/TV technician for help.

Changes or modifications not expressly approved by the party responsible for compliance could void the user's authority to operate the equipment.