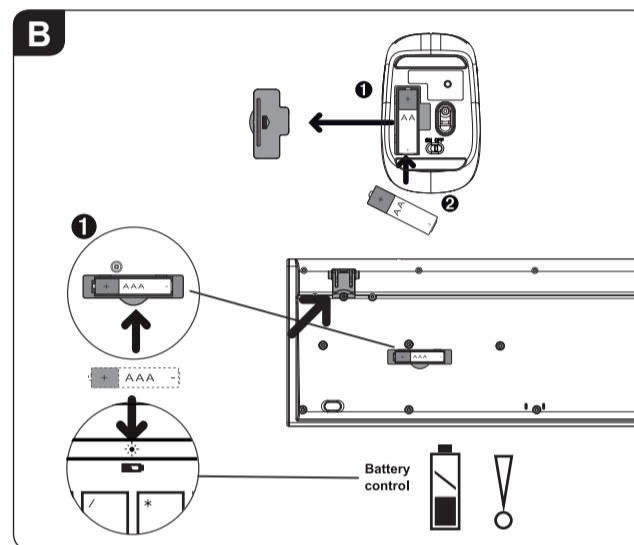
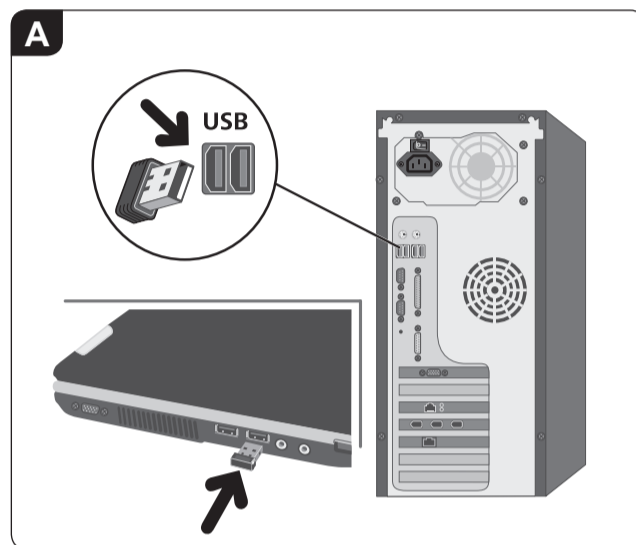
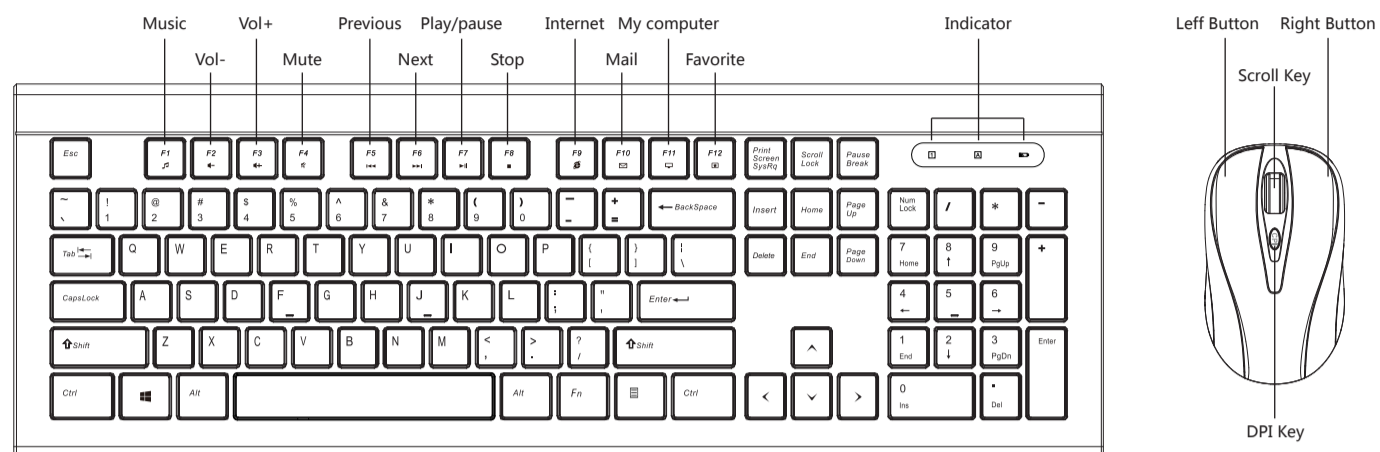


CS8800G

MADE IN CHINA

WIRELESS KEYBOARD&MOUSE SE

Important Safety, Compliance and Warranty Information



Read Manual Before Product Use.

BATTERY WARNING! Battery life varies with usage. Non-operations batteries should be discarded according to local laws. If no laws or regulations govern, dispose of your device in a waste bin for electronics. Keep batteries away from children. Operating temperature between 0°C and 40°C.

- ❖ Do not open or modify the product except for battery removal and replacement.
- ❖ Do not disassemble or attempt to service this product because there is a risk of radiation exposure, which could injure you.
- ❖ Do not direct the infrared/ laser beam at anyone's eye or a reflective object, which could injure you.
- ❖ Do not immerse product in any liquid or expose to heat or moisture.
- ❖ If product is exposed to out-of-range temperature environments, power off the device until temperature has stabilized within the specified operating temperature range.
- ❖ This is not a Children's Product and is not intended for use by children under 14 years old.
- ❖ Product must be returned to the manufacturer for any service or repairment.

FCC Statement:

Changes or modifications not expressly approved by the party responsible for compliance could void the user's authority to operate the equipment.

This equipment has been tested and found to comply with the limits for a Class B digital device, pursuant to Part 15 of the FCC Rules. These limits are designed to provide reasonable protection against harmful interference in a residential installation. This equipment generates uses and can radiate radio frequency energy and, if not installed and used in accordance with the instructions, may cause harmful interference to radio communications. However, there is no guarantee that interference will not occur in a particular installation. If this equipment does cause harmful interference to radio or television reception, which can be determined by turning the equipment off and on, the user is encouraged to try to correct the interference by one or more of the following measures:

- ❖ Reorient or relocate the receiving antenna.
- ❖ Increase the separation between the equipment and receiver.
- ❖ Connect the equipment into an outlet on a circuit different from that to which the receiver is connected.
- ❖ Consult the dealer or an experienced radio/TV technician for help.

This device complies with part 15 of the FCC rules. Operation is subject to the following two conditions (1) this device may not cause harmful interference, and (2) this device must accept any interference received, including interference that may cause undesired operation.