

# TEST REPORT

**FCC ID: 2AMSRM840G**

**Product: Wireless Mouse**

**Model No.: CM840G**

**Additional Model: Please refer to page 5**

**Trade Mark: BANRUO, COUSO, TRUST**

**Report No.: TCT170703E007**

**Issued Date: Jul. 12, 2017**

Issued for:

**Dongguan Couso Technology Co.,Ltd.**

**No.26 Minye Road, Tangxia town, Dongguan City, Guangdong Province,  
China.**

Issued By:

**Shenzhen Tongce Testing Lab.**

**1B/F., Building 1, Yibaolai Industrial Park, Qiaotou, Fuyong, Baoan District,  
Shenzhen, Guangdong, China**

**TEL: +86-755-27673339**

**FAX: +86-755-27673332**

**Note:** This report shall not be reproduced except in full, without the written approval of Shenzhen Tongce Testing Lab.

This document may be altered or revised by Shenzhen Tongce Testing Lab. personnel only, and shall be noted in the revision section of the document. The test results in the report only apply to the tested sample.

**TABLE OF CONTENTS**

1. Test Certification..... 3

2. Test Result Summary..... 4

3. EUT Description..... 5

4. General Information..... 7

    4.1. Test Environment and Mode..... 7

    4.2. Description of Support Units..... 7

5. Facilities and Accreditations..... 8

    5.1. Facilities..... 8

    5.2. Location..... 8

    5.3. Measurement Uncertainty..... 8

6. Test Results and Measurement Data..... 9

    6.1. Antenna Requirement..... 9

    6.2. Conducted Emission..... 10

    6.3. Radiated Emission Measurement..... 11

    6.4. 20dB Occupied Bandwidth..... 20

**Appendix A: Photographs of Test Setup**

**Appendix B: Photographs of EUT**

## 1. Test Certification

|                              |  |
|------------------------------|--|
| <b>Product:</b>              | Wireless Mouse   |
| <b>Model No.:</b>            | CM840G   |
| <b>Additional Model:</b>     | Please refer to page 5   |
| <b>Trade Mark:</b>           | <b>BANRUO, COUSO, TRUST</b>  |
| <b>Applicant:</b>            | Dongguan Couso Technology Co.,Ltd.   |
| <b>Address:</b>              | No.26 Minye Road, Tangxia town, Dongguang City, Guangdong Province, China  |
| <b>Manufacturer:</b>         | Dongguan Couso Technology Co.,Ltd.   |
| <b>Address:</b>              | No.26 Minye Road, Tangxia town, Dongguang City, Guangdong Province, China. |
| <b>Date of Test:</b>         | Jul. 04, 2017 – Jul. 11, 2017  |
| <b>Applicable Standards:</b> | FCC CFR Title 47 Part 15 Subpart C Section 15.249                          |

*The above equipment has been tested by Shenzhen Tongce Testing Lab. and found compliance with the requirements set forth in the technical standards mentioned above. The results of testing in this report apply only to the product/system, which was tested. Other similar equipment will not necessarily produce the same results due to production tolerance and measurement uncertainties.*

Tested By:



Brews Xu

Date:

Jul. 11, 2017

Reviewed By:



Joe Zhou

Date:

Jul. 12, 2017

Approved By:



Tomsin

Date:

Jul. 12, 2017

## 2. Test Result Summary

| Requirement                      | CFR 47 Section                      | Result |
|----------------------------------|-------------------------------------|--------|
| Antenna Requirement              | §15.203                             | PASS   |
| AC Power Line Conducted Emission | §15.207                             | N/A    |
| Field Strength of Fundamental    | §15.249 (a)                         | PASS   |
| Spurious Emissions               | §2.1053<br>§15.249 (a) (d)/ §15.209 | PASS   |
| Band Edge                        | §2.1053<br>§15.249 (d)/ §15.205     | PASS   |
| 20dB Occupied Bandwidth          | §2.1049<br>§15.215 (c)              | PASS   |

**Note:**

1. Pass: Test item meets the requirement.
2. Fail: Test item does not meet the requirement.
3. N/A: Test case does not apply to the test object.
4. The test result judgment is decided by the limit of test standard.

### 3. EUT Description

|                               |  |
|-------------------------------|--|
| <b>Product:</b>               | Wireless Mouse   |
| <b>Model No.:</b>             | CM840G   |
| <b>Additional Model:</b>      | CM800LD, CM810LD, CM820LD, CM830LD, CM840LD, CM850LD, CM860LD, CM870LD, CM880LD, CM890LD, MKS-2000, WLA-2000, WLS-2000, MKS-3000, MKS-5000, CM-5000, CM-6000, CG10LD, CG11LD, CG12LD, CG13LD, CG14LD, CG15LD, CG16LD, CG17LD, CG18LD, CG19LD, CG20LD, CG30LD, CG40LD, CG50LD, CG60LD, CG70LD, CG80LD, CG90LD, CM610LD, CM620LD, CM630LD, CM640LD, CM650LD, CM660LD, CM670LD, CM680LD, CM690LD, CM610B, CM620B, CM630B, CM640B, CM650B, CM660B, CM670B, CM680B, CM690B, CM800B, CM810B, CM820B, CM830B, CM840B, CM850B, CM860B, CM870B, CM880B, CM890B, CM800BL, CM810BL, CM820BL, CM830BL, CM840BL, CM850BL, CM860BL, CM870BL, CM880BL, CM890BL, CM891BL, CM892BL, CM893BL, CM894BL, CM895BL, CM896BL, CM897BL, CM898BL, CM899BL, CM610G, CM620G, CM630G, CM640G, CM650G, CM660G, CM670G, CM680G, CM690G, CM815G, CM810G, CM820G, CM830G, CM840G, CM850G, CM860G, CM870G, CM880G, CM890G, CM891G, CM892G, CM894G, CM895G, CM896G, CM897G, CM898G, CM898GL, CM899G, CM899GL, PC114A, CM611G, CM612G, CM613G, CM614G, CM615G, CM616G, CM617G, CM618G, CM619G, CM800G |
| <b>Trade Mark:</b>            | <b>BANRUO, COUSO, TRUST</b>  |
| <b>Operation Frequency:</b>   | 2405MHz ~ 2470MHz  |
| <b>Number of Channel:</b>     | 8  |
| <b>Modulation Technology:</b> | FSK  |
| <b>Antenna Type:</b>          | Internal Antenna   |
| <b>Antenna Gain:</b>          | 2.95dBi  |
| <b>Power Supply:</b>          | DC 1.5V (1pcs AA Battery)  |
| <b>Remark:</b>                | All models above are identical in interior structure, electrical circuits and components, and just model names are different for the marketing requirement.  |



**Operation Frequency Each of Channel**

| Channel | Frequency | Channel | Frequency |
|---------|-----------|---------|-----------|
| 0       | 2405 MHz  | 4       | 2440 MHz  |
| 1       | 2413 MHz  | 5       | 2450 MHz  |
| 2       | 2422 MHz  | 6       | 2460 MHz  |
| 3       | 2430 MHz  | 7       | 2470 MHz  |

**Note:**

*In section 15.31(m), regards to the operating frequency range over 10 MHz, the Lowest frequency, the middle frequency, and the highest frequency of channel were selected to perform the test, and the selected channel see below:*

| Channel             | Frequency |
|---------------------|-----------|
| The lowest channel  | 2405MHz   |
| The middle channel  | 2430MHz   |
| The Highest channel | 2470MHz   |

## 4. General Information

### 4.1. Test Environment and Mode

| Operating Environment:   |   |
|--|---|
| Temperature:   | 25.0 °C   |
| Humidity:  | 54 % RH   |
| Atmospheric Pressure:  | 1010 mbar   |
| Test Mode:   |   |
| Engineering mode:  | Keep the EUT in continuous transmitting by select channel |
| <p>The sample was placed (0.8m below 1GHz, 1.5m above 1GHz) above the ground plane of 3m chamber. Measurements in both horizontal and vertical polarities were performed. During the test, each emission was maximized by: having the EUT continuously working, investigated all operating modes, rotated about all 3 axis (X, Y &amp; Z) and considered typical configuration to obtain worst position, manipulating interconnecting cables, rotating the turntable, varying antenna height from 1m to 4m in both horizontal and vertical polarizations. The emissions worst-case are shown in Test Results of the following pages.</p> |   |

### 4.2. Description of Support Units

The EUT has been tested as an independent unit together with other necessary accessories or support units. The following support units or accessories were used to form a representative test configuration during the tests.

| Equipment | Model No. | Serial No. | FCC ID | Trade Name |
|-----------|-----------|------------|--------|------------|
| /         | /         | /          | /      | /          |

**Note:**

1. All the equipment/cables were placed in the worst-case configuration to maximize the emission during the test.
2. Grounding was established in accordance with the manufacturer's requirements and conditions for the intended use.

## 5. Facilities and Accreditations

### 5.1. Facilities

The test facility is recognized, certified, or accredited by the following organizations:

- FCC - Registration No.: 572331

Shenzhen Tongce Testing Lab

The 3m Semi-anechoic chamber has been registered and fully described in a report with the (FCC) Federal Communications Commission. The acceptance letter from the FCC is maintained in our files.

- IC - Registration No.: 10668A-1

The 3m Semi-anechoic chamber of Shenzhen TCT Testing Technology Co., Ltd. has been registered by Certification and Engineering Bureau of Industry Canada for radio equipment testing

### 5.2. Location

Shenzhen Tongce Testing Lab

Address: 1B/F., Building 1, Yibaolai Industrial Park, Qiaotou, Fuyong, Baoan District, Shenzhen, Guangdong, China

TEL: +86-755-27673339

### 5.3. Measurement Uncertainty

The reported uncertainty of measurement  $y \pm U$ , where expanded uncertainty  $U$  is based on a standard uncertainty multiplied by a coverage factor of  $k=2$ , providing a level of confidence of approximately 95 %.

| No. | Item                           | MU                      |
|-----|--------------------------------|-------------------------|
| 1   | Conducted Emission             | $\pm 2.56\text{dB}$     |
| 2   | RF power, conducted            | $\pm 0.12\text{dB}$     |
| 3   | Spurious emissions, conducted  | $\pm 0.11\text{dB}$     |
| 4   | All emissions, radiated(<1GHz) | $\pm 3.92\text{dB}$     |
| 5   | All emissions, radiated(>1GHz) | $\pm 4.28\text{dB}$     |
| 6   | Temperature                    | $\pm 0.1^\circ\text{C}$ |
| 7   | Humidity                       | $\pm 1.0\%$             |



## 6. Test Results and Measurement Data

### 6.1. Antenna Requirement

**Standard requirement:**

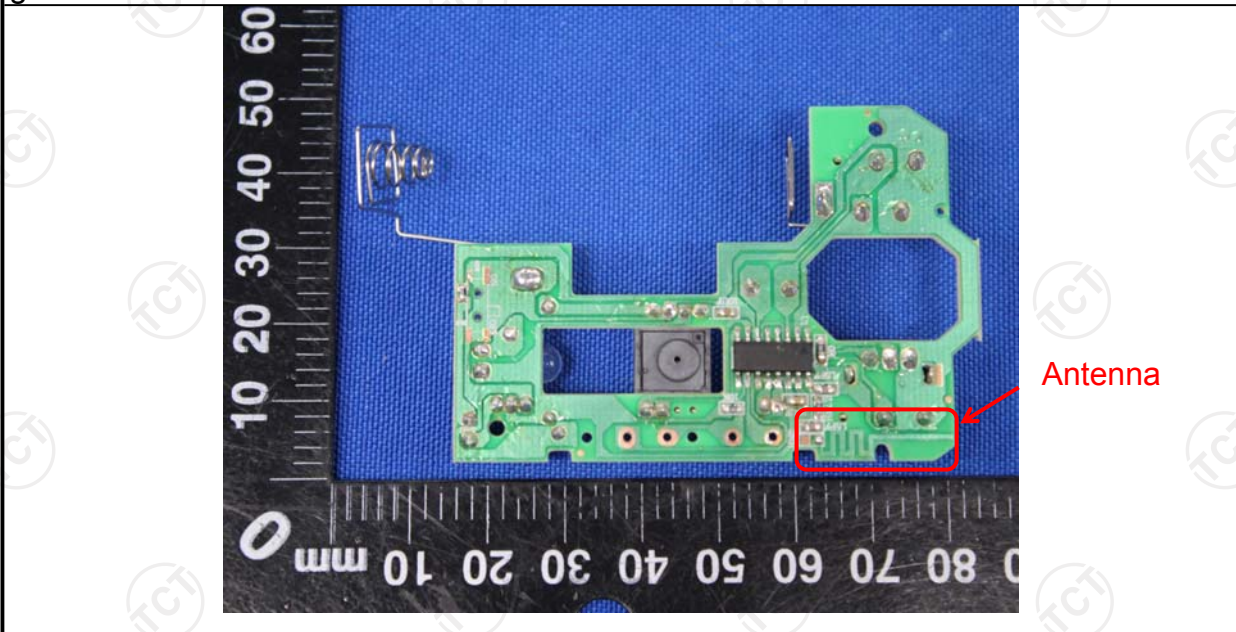
FCC Part15 C Section 15.203

15.203 requirement:

An intentional radiator shall be designed to ensure that no antenna other than that furnished by the responsible party shall be used with the device. The use of a permanently attached antenna or of an antenna that uses a unique coupling to the intentional radiator, the manufacturer may design the unit so that a broken antenna can be replaced by the user, but the use of a standard antenna jack or electrical connector is prohibited.

**E.U.T Antenna:**

The EUT antenna is Internal Antenna which permanently attached, and the best case gain of the antenna is 2.95dBi.



## 6.2. Conducted Emission

### 6.2.1. Test Specification

| <b>Test Requirement:</b> | FCC Part15 C Section 15.207  |                       |              |  |            |         |          |           |           |       |    |    |      |    |    |
|--------------------------|--|-----------------------|--------------|--|------------|---------|----------|-----------|-----------|-------|----|----|------|----|----|
| <b>Test Method:</b>      | ANSI C63.10:2013   |                       |              |  |            |         |          |           |           |       |    |    |      |    |    |
| <b>Frequency Range:</b>  | 150 kHz to 30 MHz  |                       |              |  |            |         |          |           |           |       |    |    |      |    |    |
| <b>Receiver setup:</b>   | RBW=9 kHz, VBW=30 kHz, Sweep time=auto   |                       |              |  |            |         |          |           |           |       |    |    |      |    |    |
| <b>Limits:</b>           | <table border="1"> <thead> <tr> <th rowspan="2">Frequency range (MHz)</th> <th colspan="2">Limit (dBuV)</th> </tr> <tr> <th>Quasi-peak</th> <th>Average</th> </tr> </thead> <tbody> <tr> <td>0.15-0.5</td> <td>66 to 56*</td> <td>56 to 46*</td> </tr> <tr> <td>0.5-5</td> <td>56</td> <td>46</td> </tr> <tr> <td>5-30</td> <td>60</td> <td>50</td> </tr> </tbody> </table>  | Frequency range (MHz) | Limit (dBuV) |  | Quasi-peak | Average | 0.15-0.5 | 66 to 56* | 56 to 46* | 0.5-5 | 56 | 46 | 5-30 | 60 | 50 |
|                          | Frequency range (MHz)  |                       | Limit (dBuV) |  |            |         |          |           |           |       |    |    |      |    |    |
|                          |  | Quasi-peak            | Average      |  |            |         |          |           |           |       |    |    |      |    |    |
|                          | 0.15-0.5   | 66 to 56*             | 56 to 46*    |  |            |         |          |           |           |       |    |    |      |    |    |
| 0.5-5                    | 56   | 46                    |              |  |            |         |          |           |           |       |    |    |      |    |    |
| 5-30                     | 60   | 50                    |              |  |            |         |          |           |           |       |    |    |      |    |    |
| <b>Test Setup:</b>       | <p><i>Remark</i><br/>E.U.T: Equipment Under Test<br/>LISN: Line Impedance Stabilization Network<br/>Test table height=0.8m</p>   |                       |              |  |            |         |          |           |           |       |    |    |      |    |    |
| <b>Test Mode:</b>        | Transmitting mode with modulation  |                       |              |  |            |         |          |           |           |       |    |    |      |    |    |
| <b>Test Procedure:</b>   | <ol style="list-style-type: none"> <li>1. The E.U.T and simulators are connected to the main power through a line impedance stabilization network (L.I.S.N.). This provides a 50ohm/50uH coupling impedance for the measuring equipment.</li> <li>2. The peripheral devices are also connected to the main power through a LISN that provides a 50ohm/50uH coupling impedance with 50ohm termination. (Please refer to the block diagram of the test setup and photographs).</li> <li>3. Both sides of A.C. line are checked for maximum conducted interference. In order to find the maximum emission, the relative positions of equipment and all of the interface cables must be changed according to ANSI C63.10:2013 on conducted measurement.</li> </ol> |                       |              |  |            |         |          |           |           |       |    |    |      |    |    |
| <b>Test Result:</b>      | The EUT is supplied by 1.5V from AA battery, so Conducted Emission is not applicable.  |                       |              |  |            |         |          |           |           |       |    |    |      |    |    |

### 6.3. Radiated Emission Measurement

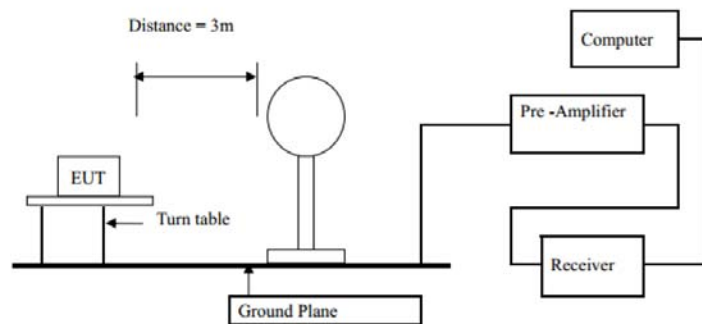
#### 6.3.1. Test Specification

|   |   |                    |        |                  |                  |
|---|---|--------------------|--------|------------------|------------------|
| <b>Test Requirement:</b>                                | FCC Part15 C Section 15.209/ Part 2 J Section 2.1053  |                    |        |                  |                  |
| <b>Test Method:</b>                                     | ANSI C63.10:2013  |                    |        |                  |                  |
| <b>Frequency Range:</b>                                 | 9 kHz to 25 GHz   |                    |        |                  |                  |
| <b>Measurement Distance:</b>                            | 3 m   |                    |        |                  |                  |
| <b>Antenna Polarization:</b>                            | Horizontal & Vertical   |                    |        |                  |                  |
| <b>Receiver Setup:</b>                                  | Frequency   | Detector           | RBW    | VBW              | Remark           |
|   | 9kHz- 150kHz  | Quasi-peak         | 200Hz  | 1kHz             | Quasi-peak Value |
|   | 150kHz-30MHz  | Quasi-peak         | 9kHz   | 30kHz            | Quasi-peak Value |
|   | 30MHz-1GHz  | Quasi-peak         | 120kHz | 300kHz           | Quasi-peak Value |
|   | Above 1GHz  | Peak               | 1MHz   | 3MHz             | Peak Value       |
| Peak  |   | 1MHz               | 10Hz   | Average Value    |                  |
| <b>Limit(Field strength of the fundamental signal):</b> | Frequency   | Limit (dBuV/m @3m) |        | Remark           |                  |
|   | 2400MHz-2483.5MHz   | 94.00              |        | Average Value    |                  |
|   |   | 114.00             |        | Peak Value       |                  |
| <b>Limit(Spurious Emissions):</b>                       | Frequency   | Limit (dBuV/m @3m) |        | Remark           |                  |
|   | 0.009-0.490   | 2400/F(KHz)        |        | Quasi-peak Value |                  |
|   | 0.490-1.705   | 24000/F(KHz)       |        | Quasi-peak Value |                  |
|   | 1.705-30  | 30                 |        | Quasi-peak Value |                  |
|   | 30MHz-88MHz   | 40.0               |        | Quasi-peak Value |                  |
|   | 88MHz-216MHz  | 43.5               |        | Quasi-peak Value |                  |
|   | 216MHz-960MHz   | 46.0               |        | Quasi-peak Value |                  |
|   | 960MHz-1GHz   | 54.0               |        | Quasi-peak Value |                  |
|   | Above 1GHz  | 54.0               |        | Average Value    |                  |
| 74.0  |   | Peak Value         |        |                  |                  |
| <b>Limit (band edge) :</b>                              | Emissions radiated outside of the specified frequency bands, except for harmonics, shall be attenuated by at least 50 dB below the level of the fundamental or to the general radiated emission limits in Section 15.209, whichever is the lesser attenuation.  |                    |        |                  |                  |
| <b>Test Procedure:</b>                                  | <ol style="list-style-type: none"> <li>1. The EUT was placed on the top of a rotating table 0.8 meters above the ground at a 3 meter chamber in below 1GHz, 1.5m above the ground in above 1GHz. The table was rotated 360 degrees to determine the position of the highest radiation.</li> <li>2. The EUT was set 3 meters away from the interference-receiving antenna, which was mounted on the top of a variable-height antenna tower.</li> <li>3. The antenna height is varied from one meter to four meters above the ground to determine the maximum value of the field strength. Both horizontal and</li> </ol> |                    |        |                  |                  |

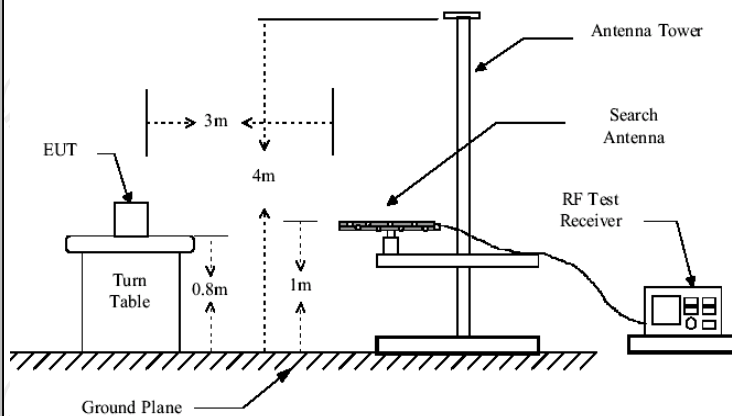
Test setup:

- vertical polarizations of the antenna are set to make the measurement.
4. For each suspected emission, the EUT was arranged to its worst case and then the antenna was tuned to heights from 1 meter to 4 meters and the rotatable table was turned from 0 degrees to 360 degrees to find the maximum reading.
  5. The test-receiver system was set to Peak Detect Function and Specified Bandwidth with Maximum Hold Mode.
  6. If the emission level of the EUT in peak mode was 10dB lower than the limit specified, then testing could be stopped and the peak values of the EUT would be reported. Otherwise the emissions that did not have 10dB margin would be re-tested one by one using peak, quasi-peak or average method as specified and then reported in a data sheet.

For radiated emissions below 30MHz

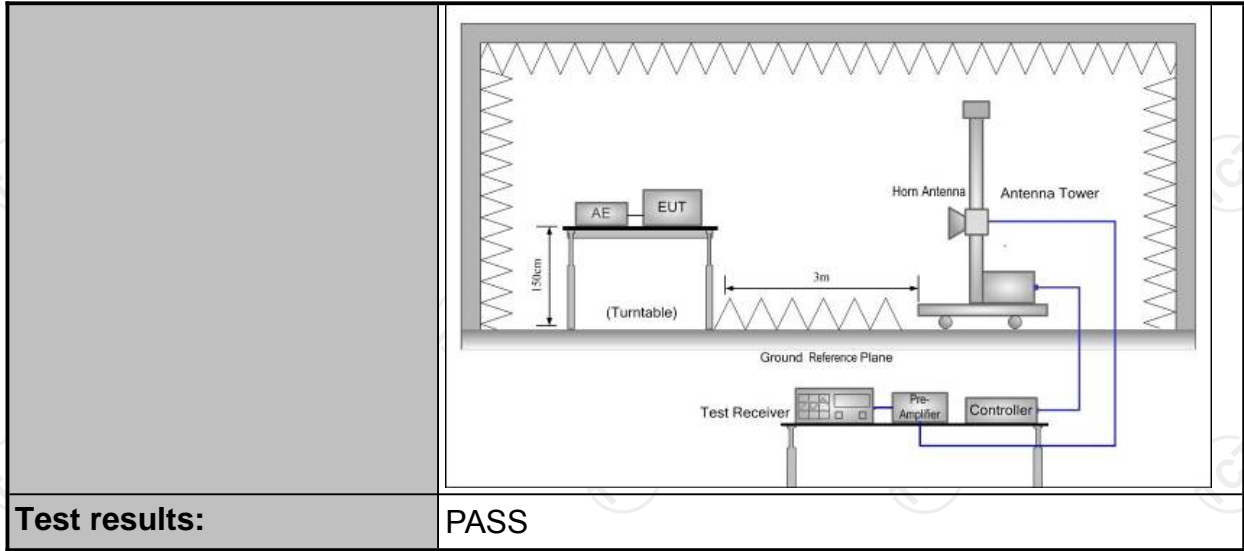


30MHz to 1GHz



Above 1GHz

(The diagram below shows the test setup that is utilized to make the measurements for emission from 1GHz to the tenth harmonic of the highest fundamental frequency or to 40GHz emissions, whichever is lower.)



**6.3.2. Test Instruments**

| Radiated Emission Test Site (966) |  |            |               |                 |
|-----------------------------------|--|------------|---------------|-----------------|
| Name of Equipment                 | Manufacturer                             | Model      | Serial Number | Calibration Due |
| Test Receiver                     | ROHDE&SCHW<br>ARZ                        | ESVD       | 100008        | Oct. 13, 2017   |
| Spectrum Analyzer                 | ROHDE&SCHW<br>ARZ                        | FSQ        | 200061        | Oct. 13, 2017   |
| Pre-amplifier                     | EM Electronics<br>Corporation<br>CO.,LTD | EM30265    | 07032613      | Oct. 13, 2017   |
| Pre-amplifier                     | HP                                       | 8447D      | 2727A05017    | Oct. 13, 2017   |
| Loop antenna                      | ZHINAN                                   | ZN30900A   | 12024         | Oct. 13, 2017   |
| Broadband Antenna                 | Schwarzbeck                              | VULB9163   | 340           | Oct. 13, 2017   |
| Horn Antenna                      | Schwarzbeck                              | BBHA 9120D | 631           | Oct. 13, 2017   |
| Horn Antenna                      | Schwarzbeck                              | BBH 9170   | 582           | Jun. 07, 2018   |
| Antenna Mast                      | Keleto                                   | CC-A-4M    | N/A           | N/A             |
| Coax cable<br>(9KHz-1GHz)         | TCT                                      | RE-low-01  | N/A           | Oct. 13, 2017   |
| Coax cable<br>(9KHz-40GHz)        | TCT                                      | RE-high-02 | N/A           | Oct. 13, 2017   |
| Coax cable<br>(9KHz-1GHz)         | TCT                                      | RE-low-03  | N/A           | Oct. 13, 2017   |
| Coax cable<br>(9KHz-40GHz)        | TCT                                      | RE-high-04 | N/A           | Oct. 13, 2017   |
| EMI Test Software                 | Shurple<br>Technology                    | EZ-EMC     | N/A           | N/A             |

**Note:** The calibration interval of the above test instruments is 12 months and the calibrations are traceable to international system unit (SI).

### 6.3.3. Test Data

#### Field Strength of Fundamental

| Frequency (MHz) | Emission PK (dBuV/m) | Horizontal /Vertical | Limits PK (dBuV/m) | Margin (dB) |
|-----------------|----------------------|----------------------|--------------------|-------------|
| 2405            | 83.26                | H                    | 114                | -30.74      |
| 2405            | 76.28                | V                    | 114                | -37.72      |
| 2430            | 83.90                | H                    | 114                | -30.10      |
| 2430            | 76.12                | V                    | 114                | -37.88      |
| 2470            | 82.64                | H                    | 114                | -31.36      |
| 2470            | 77.21                | V                    | 114                | -36.79      |

| Frequency (MHz) | Emission AV (dBuV/m) | Horizontal /Vertical | Limits AV (dBuV/m) | Margin (dB) |
|-----------------|----------------------|----------------------|--------------------|-------------|
| 2405            | 81.07                | H                    | 94                 | -12.93      |
| 2405            | 74.13                | V                    | 94                 | -19.87      |
| 2430            | 78.94                | H                    | 94                 | -15.06      |
| 2430            | 73.97                | V                    | 94                 | -20.03      |
| 2470            | 80.14                | H                    | 94                 | -13.86      |
| 2470            | 74.81                | V                    | 94                 | -19.19      |

#### Spurious Emissions

##### Frequency Range (9 kHz-30MHz)

| Frequency (MHz) | Level@3m (dBμV/m) | Limit@3m (dBμV/m) |
|-----------------|-------------------|-------------------|
| --              | --                | --                |
| --              | --                | --                |
| --              | --                | --                |
| --              | --                | --                |

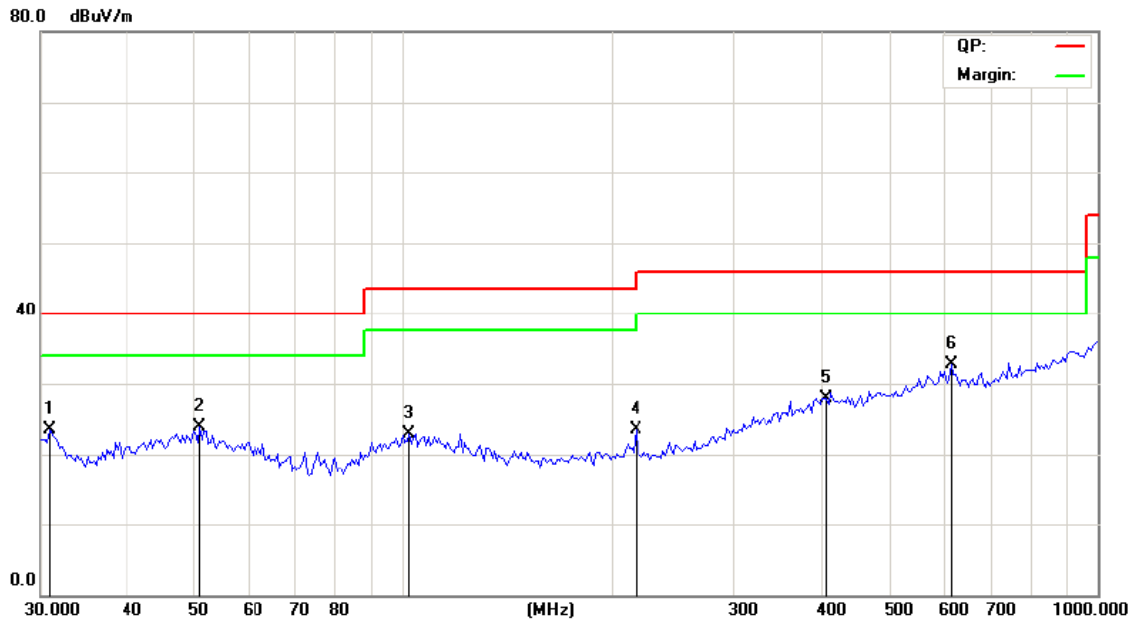
**Note:** 1. Emission Level=Reading+ Cable loss-Antenna factor-Amp factor

2. The emission levels are 20 dB below the limit value, which are not reported. It is deemed to comply with the requirement



## Frequency Range (30MHz-1GHz)

Horizontal:



Site Chamber #2

Polarization: **Horizontal**

Temperature: 25 (C)

Limit: FCC Part 15B Class B 3M Radiation

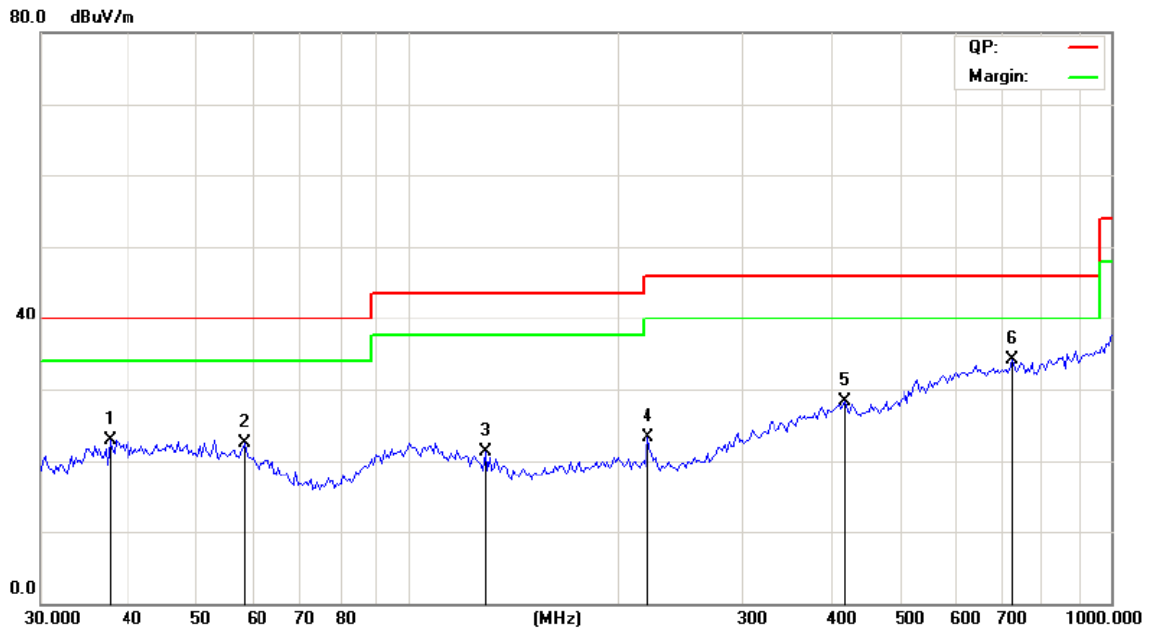
Power: DC 1.5V

Humidity: 55 %

| No. | Mk. | Freq.<br>MHz | Reading<br>Level<br>dBuV | Correct<br>Factor<br>dB | Measure-<br>ment<br>dBuV/m | Limit<br>dBuV/m | Over<br>dB | Detector | Comment |
|-----|-----|--------------|--------------------------|-------------------------|----------------------------|-----------------|------------|----------|---------|
| 1   |     | 30.8551      | 31.51                    | -7.94                   | 23.57                      | 40.00           | -16.43     | QP       |         |
| 2   |     | 50.8171      | 30.79                    | -6.81                   | 23.98                      | 40.00           | -16.02     | QP       |         |
| 3   |     | 101.8931     | 29.46                    | -6.53                   | 22.93                      | 43.50           | -20.57     | QP       |         |
| 4   |     | 216.1194     | 32.50                    | -9.07                   | 23.43                      | 46.00           | -22.57     | QP       |         |
| 5   |     | 406.7819     | 29.49                    | -1.51                   | 27.98                      | 46.00           | -18.02     | QP       |         |
| 6   | *   | 615.7743     | 30.05                    | 2.58                    | 32.63                      | 46.00           | -13.37     | QP       |         |



Vertical:



Site Chamber #2

Polarization: **Vertical**

Temperature: 25 (C)

Limit: FCC Part 15B Class B 3M Radiation

Power: DC 1.5V

Humidity: 55 %

| No. | Mk. | Freq.<br>MHz | Reading<br>Level<br>dBuV | Correct<br>Factor<br>dB | Measure-<br>ment<br>dBuV/m | Limit<br>dBuV/m | Over<br>dB | Detector | Comment |
|-----|-----|--------------|--------------------------|-------------------------|----------------------------|-----------------|------------|----------|---------|
| 1   |     | 37.5647      | 30.25                    | -7.28                   | 22.97                      | 40.00           | -17.03     | QP       |         |
| 2   |     | 58.4855      | 29.77                    | -7.33                   | 22.44                      | 40.00           | -17.56     | QP       |         |
| 3   |     | 128.4858     | 31.18                    | -9.92                   | 21.26                      | 43.50           | -22.24     | QP       |         |
| 4   |     | 219.1785     | 32.32                    | -9.07                   | 23.25                      | 46.00           | -22.75     | QP       |         |
| 5   |     | 418.3783     | 29.83                    | -1.59                   | 28.24                      | 46.00           | -17.76     | QP       |         |
| 6   | *   | 723.7930     | 29.79                    | 4.35                    | 34.14                      | 46.00           | -11.86     | QP       |         |

**Note:** Measurements were conducted in all channels (high, middle, low), and the worst case (low channel) was submitted only.

### Above 1GHz

| Low channel: 2405MHz |               |                     |                   |                          |                |             |                     |                   |             |
|----------------------|---------------|---------------------|-------------------|--------------------------|----------------|-------------|---------------------|-------------------|-------------|
| Frequency (MHz)      | Ant. Pol. H/V | Peak reading (dBμV) | AV reading (dBμV) | Correction Factor (dB/m) | Emission Level |             | Peak limit (dBμV/m) | AV limit (dBμV/m) | Margin (dB) |
|                      |               |                     |                   |                          | Peak (dBμV/m)  | AV (dBμV/m) |                     |                   |             |
| 2387.50              | H             | 52.62               | ---               | -4.2                     | 48.28          | ---         | 74.00               | 54.00             | -5.72       |
| 4810.00              | H             | 51.51               | ---               | -3.94                    | 47.41          | ---         | 74.00               | 54.00             | -6.59       |
| 7215.00              | H             | 49.73               | ---               | 0.52                     | 49.55          | ---         | 74.00               | 54.00             | -4.45       |
| ---                  | ---           | ---                 | ---               | ---                      | ---            | ---         | ---                 | ---               | ---         |
| 2387.50              | V             | 50.45               | ---               | -4.2                     | 46.05          | ---         | 74.00               | 54.00             | -7.95       |
| 4810.00              | V             | 48.49               | ---               | 3.94                     | 52.33          | ---         | 74.00               | 54.00             | -1.67       |
| 7215.00              | V             | 46.20               | ---               | 0.52                     | 46.85          | ---         | 74.00               | 54.00             | -7.15       |
| ---                  | ---           | ---                 | ---               | ---                      | ---            | ---         | ---                 | ---               | ---         |

| Middle channel: 2430MHz |               |                     |                   |                          |                |             |                     |                   |             |
|-------------------------|---------------|---------------------|-------------------|--------------------------|----------------|-------------|---------------------|-------------------|-------------|
| Frequency (MHz)         | Ant. Pol. H/V | Peak reading (dBμV) | AV reading (dBμV) | Correction Factor (dB/m) | Emission Level |             | Peak limit (dBμV/m) | AV limit (dBμV/m) | Margin (dB) |
|                         |               |                     |                   |                          | Peak (dBμV/m)  | AV (dBμV/m) |                     |                   |             |
| 4860.00                 | H             | 52.37               | ---               | -3.98                    | 48.18          | ---         | 74.00               | 54.00             | -5.82       |
| 7290.00                 | H             | 49.41               | ---               | 0.57                     | 49.84          | ---         | 74.00               | 54.00             | -4.16       |
| ---                     | ---           | ---                 | ---               | ---                      | ---            | ---         | ---                 | ---               | ---         |
| ---                     | ---           | ---                 | ---               | ---                      | ---            | ---         | ---                 | ---               | ---         |
| ---                     | ---           | ---                 | ---               | ---                      | ---            | ---         | ---                 | ---               | ---         |
| 4860.00                 | V             | 51.69               | ---               | -3.98                    | 47.28          | ---         | 74.00               | 54.00             | -6.72       |
| 7290.00                 | V             | 49.74               | ---               | 0.57                     | 49.62          | ---         | 74.00               | 54.00             | -4.38       |
| ---                     | ---           | ---                 | ---               | ---                      | ---            | ---         | ---                 | ---               | ---         |
| ---                     | ---           | ---                 | ---               | ---                      | ---            | ---         | ---                 | ---               | ---         |
| ---                     | ---           | ---                 | ---               | ---                      | ---            | ---         | ---                 | ---               | ---         |

| High channel: 2470MHz |               |                     |                   |                          |                |             |                     |                   |             |
|-----------------------|---------------|---------------------|-------------------|--------------------------|----------------|-------------|---------------------|-------------------|-------------|
| Frequency (MHz)       | Ant. Pol. H/V | Peak reading (dBμV) | AV reading (dBμV) | Correction Factor (dB/m) | Emission Level |             | Peak limit (dBμV/m) | AV limit (dBμV/m) | Margin (dB) |
|                       |               |                     |                   |                          | Peak (dBμV/m)  | AV (dBμV/m) |                     |                   |             |
| 2486.58               | H             | 51.49               | ---               | -2.38                    | 49.47          | ---         | 74.00               | 54.00             | -4.53       |
| 4940.00               | H             | 53.37               | ---               | -3.98                    | 49.03          | ---         | 74.00               | 54.00             | -4.97       |
| 7410.00               | H             | 48.25               | ---               | 0.57                     | 49.26          | ---         | 74.00               | 54.00             | -4.74       |
| ---                   | ---           | ---                 | ---               | ---                      | ---            | ---         | ---                 | ---               | ---         |
| 2483.51               | V             | 51.15               | ---               | -2.38                    | 48.66          | ---         | 74.00               | 54.00             | -5.34       |
| 4940.00               | V             | 51.70               | ---               | -3.98                    | 47.64          | ---         | 74.00               | 54.00             | -6.36       |
| 7410.00               | V             | 50.60               | ---               | 0.57                     | 50.94          | ---         | 74.00               | 54.00             | -3.06       |
| ---                   | ---           | ---                 | ---               | ---                      | ---            | ---         | ---                 | ---               | ---         |

**Note:**

1. Emission Level=Peak Reading + Correction Factor; Correction Factor= Antenna Factor + Cable loss – Pre-amplifier
2. Margin (dB) = Emission Level (Peak) (dBμV/m)-Average limit (dBμV/m)
3. The emission levels of other frequencies are very lower than the limit and not show in test report.
4. Measurements were conducted from 1 GHz to the 10th harmonic of highest fundamental frequency.
5. Data of measurement shown “---“in the above table mean that the reading of emissions is attenuated more than 20 dB below the limits or the field strength is too small to be measured.

**Band Edge Requirement**

| Low channel: 2405 MHz |               |                           |                         |                          |                     |                   |                           |                         |             |
|-----------------------|---------------|---------------------------|-------------------------|--------------------------|---------------------|-------------------|---------------------------|-------------------------|-------------|
| Frequency (MHz)       | Ant. Pol. H/V | Peak reading (dB $\mu$ V) | AV reading (dB $\mu$ V) | Correction Factor (dB/m) | Emission Level      |                   | Peak limit (dB $\mu$ V/m) | AV limit (dB $\mu$ V/m) | Margin (dB) |
|                       |               |                           |                         |                          | Peak (dB $\mu$ V/m) | AV (dB $\mu$ V/m) |                           |                         |             |
| 2400                  | H             | 49.16                     | ---                     | -4.2                     | 44.96               | ---               | 74.00                     | ---                     | -29.04      |
| 2400                  | H             | ---                       | 42.56                   | -4.2                     | ---                 | 38.36             | ---                       | 54.00                   | -15.64      |
| ---                   | ---           | ---                       | ---                     | ---                      | ---                 | ---               | ---                       | ---                     | ---         |
| 2400                  | V             | 48.65                     | ---                     | -4.2                     | 44.45               | ---               | 74.00                     | ---                     | -29.55      |
| 2400                  | V             | ---                       | 39.74                   | -4.2                     | ---                 | 35.54             | ---                       | 54.00                   | -18.46      |
| ---                   | ---           | ---                       | ---                     | ---                      | ---                 | ---               | ---                       | ---                     | ---         |

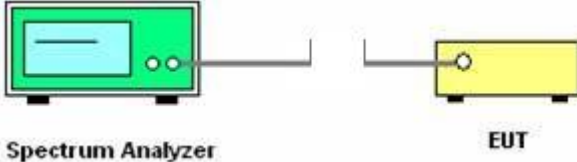
| High channel: 2470 MHz |               |                           |                         |                          |                     |                   |                           |                         |             |
|------------------------|---------------|---------------------------|-------------------------|--------------------------|---------------------|-------------------|---------------------------|-------------------------|-------------|
| Frequency (MHz)        | Ant. Pol. H/V | Peak reading (dB $\mu$ V) | AV reading (dB $\mu$ V) | Correction Factor (dB/m) | Emission Level      |                   | Peak limit (dB $\mu$ V/m) | AV limit (dB $\mu$ V/m) | Margin (dB) |
|                        |               |                           |                         |                          | Peak (dB $\mu$ V/m) | AV (dB $\mu$ V/m) |                           |                         |             |
| 2483.5                 | H             | 50.87                     | ---                     | -4.2                     | 46.67               | ---               | 74.00                     | ---                     | -27.33      |
| 2483.5                 | H             | ---                       | 41.65                   | -4.2                     | ---                 | 37.45             | ---                       | 54.00                   | -16.57      |
| ---                    | ---           | ---                       | ---                     | ---                      | ---                 | ---               | ---                       | ---                     | ---         |
| 2483.5                 | V             | 49.41                     | ---                     | -4.20                    | 45.21               | ---               | 74.00                     | ---                     | -28.79      |
| 2483.5                 | V             | ---                       | 40.86                   | -4.2                     | ---                 | 36.66             | ---                       | 54.00                   | -17.34      |
| ---                    | ---           | ---                       | ---                     | ---                      | ---                 | ---               | ---                       | ---                     | ---         |

**Note:**

1. Emission Level=Peak Reading + Correction Factor; Correction Factor= Antenna Factor + Cable loss – Pre-amplifier
2. Margin (dB) = Emission Level (Peak/Average)(dB $\mu$ V/m)-(Peak/Average) limit (dB $\mu$ V/m)
3. The emission levels of other frequencies are very lower than the limit and not show in test report.
4. Measurements were conducted from 1 GHz to the 10th harmonic of highest fundamental frequency.
5. Data of measurement shown "—" in the above table mean that the reading of emissions is attenuated more than 20 dB below the limits or the field strength is too small to be measured.

## 6.4.20dB Occupied Bandwidth

### 6.4.1. Test Specification

|                          |  |
|--------------------------|--|
| <b>Test Requirement:</b> | FCC Part15 C Section 15.215(c)/ Part 2 J Section 2.1049  |
| <b>Test Method:</b>      | ANSI C63.10: 2013  |
| <b>Limit:</b>            | N/A  |
|                          | <ol style="list-style-type: none"> <li>1. According to the follow Test-setup, keep the relative position between the artificial antenna and the EUT.</li> <li>2. Set to the maximum power setting and enable the EUT transmit continuously.</li> <li>3. Use the following spectrum analyzer settings for 20dB Bandwidth measurement.<br/>Span = approximately 2 to 3 times the 20 dB bandwidth,<br/>centered on a hopping channel; RBW<math>\geq</math>1% of the 20 dB bandwidth;<br/>VBW<math>\geq</math>RBW; Sweep = auto; Detector function = peak; Trace = max hold.</li> <li>4. Measure and record the results in the test report.</li> </ol> |
| <b>Test setup:</b>       |  <p style="text-align: center;">Spectrum Analyzer                      EUT</p>   |
| <b>Test Mode:</b>        | Transmitting mode with modulation  |
| <b>Test results:</b>     | PASS   |

### 6.4.2. Test Instruments

| RF Test Room      |              |       |               |                 |
|-------------------|--------------|-------|---------------|-----------------|
| Equipment         | Manufacturer | Model | Serial Number | Calibration Due |
| Spectrum Analyzer | R&S          | FSU   | 200054        | Oct. 13, 2017   |

**Note:** The calibration interval of the above test instruments is 12 months and the calibrations are traceable to international system unit (SI).

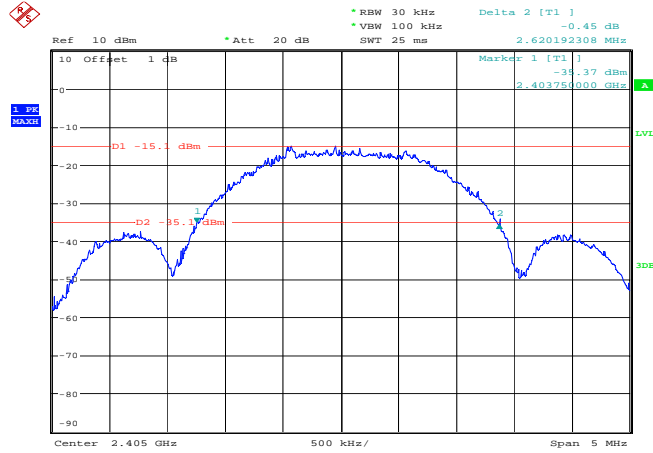
**6.4.3. Test data**

| Test Channel | 20dB Occupy Bandwidth (kHz) | Limit | Conclusion |
|--------------|-----------------------------|-------|------------|
| Lowest       | 2620.19                     | ---   | PASS       |
| Middle       | 2572.12                     | ---   | PASS       |
| Highest      | 2636.22                     | ---   | PASS       |

Test plots as follows:

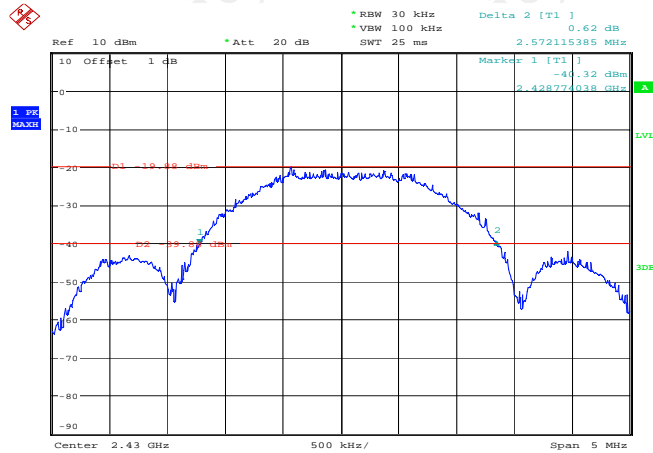


Lowest channel



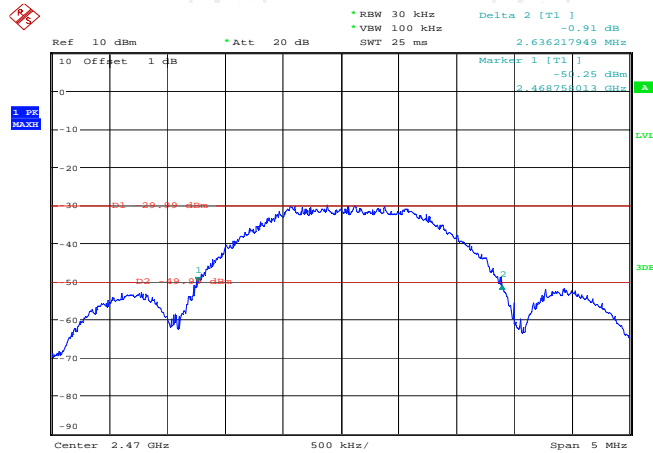
Date: 5.JUL.2017 18:52:56

Middle channel



Date: 5.JUL.2017 18:54:40

Highest channel



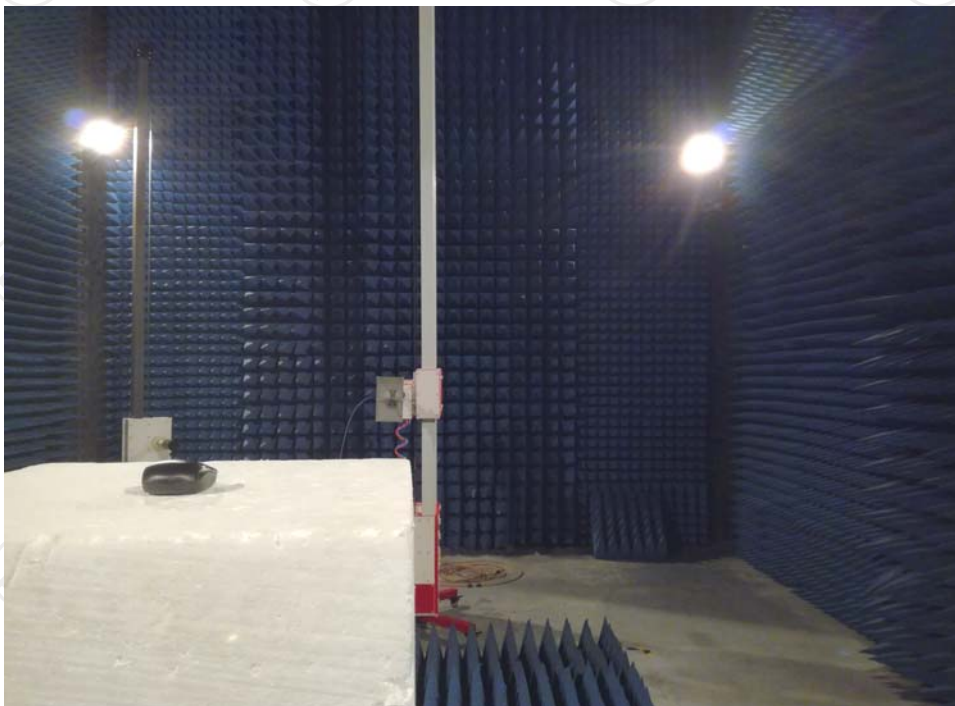
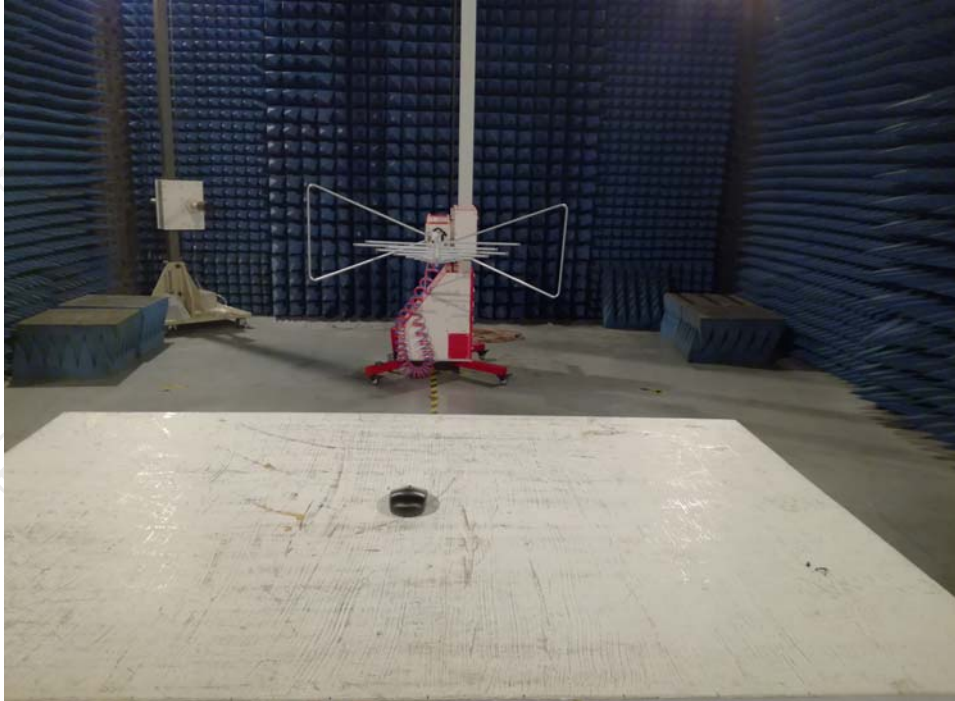
Date: 5.JUL.2017 18:47:25

## Appendix A: Photographs of Test Setup

Product: Wireless Mouse

Model: CM840G

Radiated Emission





**Appendix B: Photographs of EUT**

**Product: Wireless Mouse**

**Model: CM840G**

**External Photos**



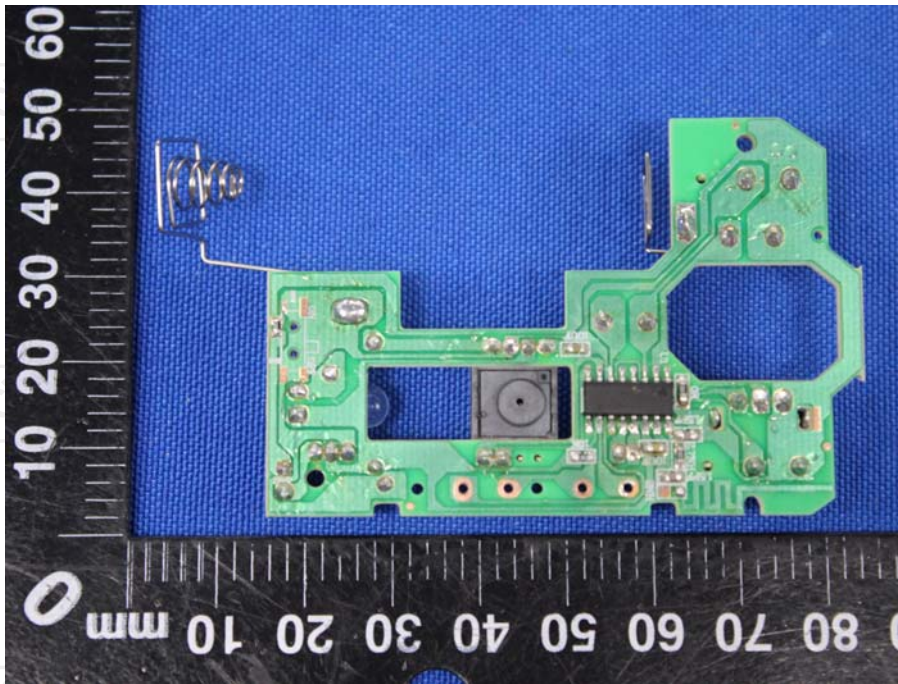
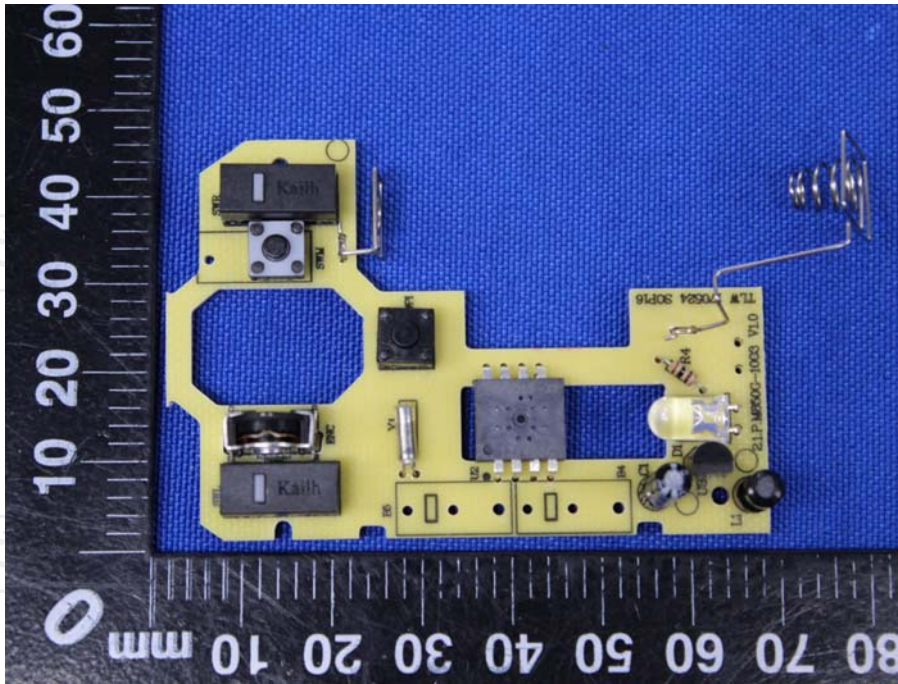




**Product: Wireless Mouse**  
**Model: CM840G**  
**Internal Photos**







**\*\*\*\*\*END OF REPORT\*\*\*\*\***