

Aivo Boost™

Dual Port Car Charger
with Alexa built-in

User Manual



The Aivo Boost is backed
by a 2 year warranty.

iottie



Aivo Boost | User Manual

For an optimal user experience, please follow the detailed instructions in this manual:

1. Getting Started
 1. User Requirements
 2. Important Safety Information
 3. Product Specifications
 4. Button Controls
 5. LED Indicators
2. Installing the Aivo Boost
 1. Power On
 2. Setup Mode
 3. Add Device
 4. Alexa is Ready
3. Using Alexa
 1. Welcome to Alexa
 2. How to Wake Alexa
 3. Alexa Settings & Preferences
 4. Tips & Things to Try
4. Charging your Devices
 1. Charging Ports
 2. Maximum Outputs

1) Getting Started

Welcome to the Aivo Boost! This manual will walk you through detailed product information, device installation and operation, using Alexa, and so much more!

1.1) User Requirements



Download the iOttie Connect app from the Apple App Store or the Google Play Store on your smartphone.



Download the Amazon Alexa app from the Apple App Store or the Google Play Store on your smartphone.



Make sure you have a reliable Cellular Data Connection and Power Source in order to use Alexa.

1.2) Important Safety Information

This manual contains important safety and operating instructions for Aivo Boost Alexa Built-in Dual Car Charger (SKU# CHCRIO201).

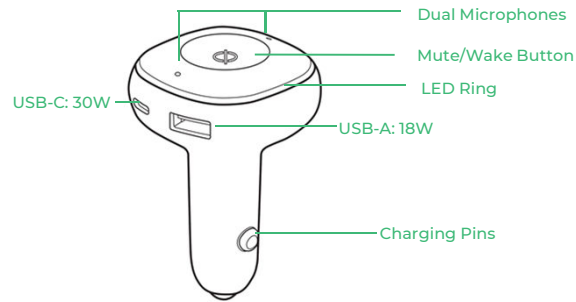
Please read all instructions and safety information before using this product. If damage occurs as a result of failure to follow the instructions, the warranty will be voided.

- Do not expose to rain, moisture, or snow.
- Using an attachment made or sold by anyone other than the manufacturer is not recommended, doing so may result in an increased risk of fire, electric shock, or injury.
- Do not operate this car charger if it has received a sharp blow, been dropped, or otherwise damaged in any way; take it to a qualified service person.
- Do not disassemble this car charger; take it to a qualified service person when service or repair is required. Incorrect reassembly may result in electric shock or fire.
- To reduce the risk of electric shock, unplug this car charger before attempting any maintenance or cleaning. Turning off the vehicle controls will not reduce this risk.
- Avoid extended exposure to direct sunlight, which may damage the device.
- Exposing this product to open flames may cause it to explode.
- Do not expose this product to strong magnetic fields.
- Use a dry, soft lint-free cloth to clean. Do not use any corrosive cleaner or oil to clean.

- Always obey traffic laws and pay attention to the road. Do not attempt to use this device while driving.

Note: Please contact our customer service center if you cannot plug the Aivo Boost into your car's auxiliary power socket.

1.3) Product Specifications



Aivo Boost Dual Car Charger

ITEM	SPECIFICATION
TOTAL INPUT	12V-24V
USB-C OUTPUT	5V/3A, 9V/2A, 12V/1.5A 0
USB-A OUTPUT	3.6-6.5V/3A, 6.5-9V/2A, 9-12V/1.5A
TOTAL OUTPUT	48W
DEPTH	2.93"
WIDTH	2"
HEIGHT	2"
WEIGHT	1.6oz

1.4) Button Controls



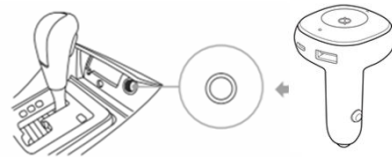
1.5) LED Indicators

COLOR		FUNCTION
Solid White		Powering On
Flashing Orange		Searching/Waiting for Bluetooth Connection
Flashing Cyan (Blue) (3X)		Device Connected
Solid Cyan (Blue)		Wake Word Activated
Alternating Dark Blue & Cyan		Thinking
Flashing Red		Device Not Connected
Solid Red		Muted
No Light		No Interaction in Progress

2) Installing the Aivo Boost

1 POWER ON

Plug the Aivo Boost into your vehicle's 12V power socket, then start the engine.



2 SETUP MODE

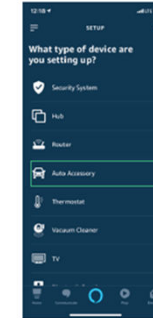
Setup mode will begin automatically.

The LED Ring will flash orange as you are redirected to the Alexa App to add a new device.



3 ADD DEVICE

In the Alexa App, navigate to Add Device > Auto Accessory, then select from available devices: iOttie Aivo Boost (####) and pair device. Allow location access and make sure Bluetooth is discoverable and turned on.



4 ALEXA IS READY

Once device is paired and connected, the LED Ring will flash blue three times before turning off. Alexa is now ready to use.



- * Device will now connect automatically when it is powered on and your smartphone is in close range.
- * To unpair device, hold the Invoke Alexa button for 5 seconds until it flashes orange and select "Forget Device" from phone's Bluetooth settings.

Updating Device Firmware via iOttie Connect App



For an optimal user experience, make sure you have the most up-to-date device firmware installed from the iOttie Connect app. Follow instructions for updating device firmware in the app.

3) Using Alexa

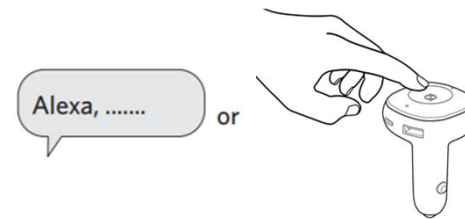
3.1) Welcome to Alexa

With Alexa, you can ask for directions, play music, place calls, listen to audiobooks, check the weather, control your smart home devices, and so much more--all while you keep your hands on the wheel and eyes on the road.

For an optimal experience, please follow the detailed instructions for Alexa setup found in the manual or the iOttie Connect app.

- Some Alexa Skills may require an Amazon Prime membership.
- Make sure your phone's Bluetooth is on and connected to your car's Bluetooth.
- The Aivo Boost with Built-in Alexa uses your cellular data when not connected to WiFi. A clear network connection is required for Alexa to work properly, otherwise there may be delays or interruptions. iOttie is not liable for data usage.
- Alexa streams from the cloud. Please note that this may use data. Data charges may apply.
- Alexa streams media instead of local files. Please note that this may use data. iOttie is not liable for data usage.
- For voice messaging, please allow permission settings by going to Contacts > Profile and Settings > Permission

3.2) How to Wake Alexa



- A Wake Word can be used to ask Alexa anything. The wake word is simply "Alexa."

OR

- Tap on the Wake Button instead of using the wake word.

! There will be no visual cue on your smartphone that announces the connection except that the color of Aivo Boost's LED light should be blue.

! The Alexa App must be running in the background of your phone for the device to work. Your phone will automatically launch the Alexa App in the background upon connection.

3.3) Alexa Settings & Preferences

3.3.1) Navigation Settings

Alexa will use your default maps app. To use a specific map (i.e. Waze or Google Maps) the default must be changed within the Alexa app.

1. Go to the menu and select "Settings"
2. Select "Commute"
3. Select "Default Navigation App"

3.3.2) Music Settings

When playing music, Alexa will default to; Amazon Music. If using another service, the default must be changed within the Alexa app.

1. Go to the menu and select "Settings"
2. Select "Music & Podcasts"
3. Select "Default Services"

3.3.3) Call and Text Message Settings

For Voice messaging and calling, please allow permission settings by going to: Contacts > Profile and Settings > Permission.

*Alexa App menu names subject to change at any time.

3.4) Things to Try with Alexa

With Alexa, users can ask for directions, play music, make hands-free calls, control smart home devices, and much more. Just ask!



Navigation

Alexa, navigate to Prospect Park.
Alexa, find me the nearest gas station.
Alexa, get directions to home.



Music

Alexa, turn up the volume.
Alexa, play rock music.
Alexa, rewind 15 seconds.



Communication

Alexa, call Home.
Alexa, text "Hello" to John.
Alexa, call Hannah.



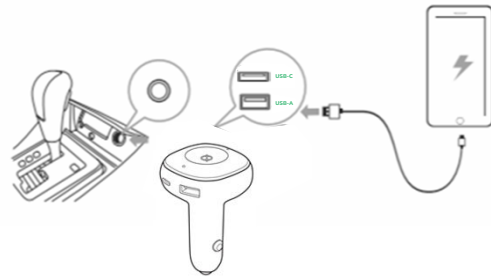
Miscellaneous

Alexa, find a nearby gas station.
Alexa, what's the weather?
Alexa, tell me a story.
Alexa, resume my audiobook.
Alexa, lock the front door.
Alexa, what's on my to do list?
Alexa, how does my day look?
Alexa, what movies are playing?
Alexa, what's the news?

4) Charging Your Devices

4.1) Charging Ports

The Aivo Boost contains two charging ports - one USB-C and one USB-A. You can charge two devices at the same time.



4.2) Maximum Output

USB-C	Up to 30W
USB-A	Up to 18W
In total	Up to 48W

ITEM	SPECIFICATION
INPUT	DC 12V/24V
Output	USB C : 5V/3A, 9V/3A, 12V/2.5A(30W) USB A : 3.6-6.5V/3A, 6.5-9V/2A, 9-12V/1.5A(18W) Total : 48W
DEPTH	2.93"
WIDTH	2"
HEIGHT	2"
WEIGHT	1.6oz

This device complies with part 15 of the FCC rules. Operation is subject to the following two conditions: (1) this device may not cause harmful interference, and (2) this device must accept any interference received, including interference that may cause undesired operation.

NOTE: The manufacturer is not responsible for any radio or TV interference caused by unauthorized modifications to this equipment. Such modifications could void the user's authority to operate the equipment.

NOTE: This equipment has been tested and found to comply with the limits for a Class B digital device, pursuant to part 15 of the FCC Rules. These limits are designed to provide reasonable protection against harmful interference in a residential installation. This equipment generates uses and can radiate radio frequency energy and, if not installed and used in accordance with the instructions, may cause harmful interference to radio communications. However, there is no guarantee that interference will not occur in a particular installation. If this equipment does cause harmful interference to radio or television reception, which can be determined by turning the equipment off and on, the user is encouraged to try to correct the interference by one or more of the following measures:

- Reorient or relocate the receiving antenna.
- Increase the separation between the equipment and receiver.
- Connect the equipment into an outlet on a circuit different from that to which the receiver is connected.
- Consult the dealer or an experienced radio/TV technician for help
- This device and its antenna(s) must not be co-located or operating in conjunction with any other antenna or transmitter.

This equipment complies with FCC radiation exposure limits set forth for an uncontrolled environment. This equipment should be installed and operated with minimum distance of 20 cm between the radiator and your body. This transmitter must not be co-located or operating in conjunction with any other antenna or transmitter

EU regulatory conformance

RF exposure information: The Maximum Permissible Exposure (MPE) level has been calculated based on a distance of 20cm between the device and the human body. To maintain compliance with RF exposure requirement, use product that maintain a 20cm distance between the device and human body.

CE DOC

Hereby, iOttie inc. declares that the radio equipment type Aivo Boost is in compliance with Directive 2014/53/EU. The full text of the EU declaration of conformity is available at the following internet address: www.iottie.com

Manufacturer information:

Company name: iOttie inc.

Address: 20w 37th st 6fl, New York, NY, 10018

Operation temperature: -20°C~60°C

Operation frequency (Max power):

Bluetooth: 2402-2480 (6dBm)



This product complies with the radio interference requirements of the European Community.



This product is designed and manufactured with high quality materials and components, which can be recycled and reused.



This symbol means the product must not be discarded as household waste, and should be delivered to an appropriate collection facility for recycling. Proper disposal and recycling helps protect natural resources, human health and the environment. For more information on disposal and recycling of this product, contact your local municipality, disposal service, or the shop where you bought this product.



Amazon, Alexa and all related logos are trademarks of Amazon.com, Inc. or its affiliates.

Apple and the Apple logo are trademarks of Apple Inc., registered in the U.S. and other countries. App Store is a service mark of Apple Inc., registered in the U.S. and other countries.

Google Play and the Google Play logo are trademarks of Google Inc.

"Android" is a registered trademark of Google Inc. in the United States and other countries.

"iOS" is a registered trademark of Apple Inc. in the United States and other countries.



The Bluetooth® word mark and logos are registered trademarks owned by Bluetooth SIG, Inc.

Other trademarks and trade names are those of their respective owners.